

Chris McCawley & Bob Grellman

present

the

2001 EAC Convention

Sale

of U. S. Colonials,  
Half Cents & Large Cents

March 31, 2001

\$15.00





the  
**2001 EAC Convention**  
**Sale**

**of U. S. Colonials,  
Half Cents & Large Cents**

*To be held at the  
Holiday Inn Select  
2801 Plank Road, Fredericksburg, VA*

*Saturday Night, March 31, 2001, 7:00 p.m.*

Welcome to the 2001 EAC Club Sale. We anticipate a great convention and a successful sale. We hope you will be attending the convention, a number of programs and events are scheduled. We have enclosed a convention introduction and schedule of events. For further information about the convention, please contact: Bill Eckberg, P.O. Box 25181, Alexandria, VA, 22313. (703) 567-5663.

Our sale will be held, Saturday Night, March 31, at 7:00 p.m. Lot viewing for the sale will be held March 28-31, at the Convention hotel. We encourage your participation, whether you bid by mail or in person. Please feel free to call: Chris McCawley, (405) 341-2213 or Bob Grellman, (407) 321-8747 to discuss any lot in the sale. Mail, phone or fax bids will be accepted up through the day of the sale and should be directed to Bob's Florida address. Please read our terms of sale before bidding.

Thanks to Jim and Naomi Tuttle, Virginia Beaver, Hoyt Fleeting and all the staff at Advance Graphics.

*This a private sale, please read our terms of sale on (p.72) before bidding.*

COLONIALS

HIGH GRADE OAK TREE TWO PENCE



001. 1662 Massachusetts Oak Tree Two Pence Noe-30 R4 PCGS graded EF40. Dark bluish steel with light silvery gray highpoints. The obverse is struck slightly off center to K-6, as usual, while the reverse is properly centered. The planchet is not perfectly smooth and is slightly bent, but the date is bold and legends all readable, although the top half of S OF MA is off the planchet due to the misaligned obverse die. Weight recorded on the PCGS label as 111.9 grains. EAC graded VF30.



003. St Patrick Halfpenny Vlack 5-D Reeded Edge Good-6. Slightly sharper with a collection of very light pin scratches on the reverse, mostly on the king and harp. Otherwise the surfaces are smooth and choice. Glossy light to medium brown. The splasher is bright golden yellow and covers nearly all of the crown. Nice for the grade. Weight 118.4 grains.

CHOICE NOE 8 PINE TREE SHILLING



002. 1652 Massachusetts Pine Tree Shilling Noe-8 R3- EF45. Choice bright silvery gray with lustrous bluish steel toning in protected areas. Free of marks, planchet flaws, or any other defects. Nicely centered, although the tops of THVS are slightly off the planchet. LDS. A truly choice example of this popular early colonial issue. Weight 66.9 grains. ExHazelcorn 1968. (cover coin)



004. St Patrick Farthing Breen-208 (nothing below king) VG8. Glossy light brown with dark olive in the protected areas creating a two-tone look that accents the devices. The planchet is not perfectly smooth but it isn't bad, either. A piece not yet examined by Griffice or Stephens, so the die variety is unknown. Weight 61.5 grains.



005. 1724 Wood's Hibernia Halfpenny Breen-166 Period after date, 11 harpstrings VF20. Ten points sharper with traces of very minor roughness, including a small patch of verdigris at the dot above the head. Rather glossy dark chocolate brown and olive with lighter brown highpoints. A small mark on the forehead and a couple hairline scratches at the bust. Weight 117.6 grains.



006. 1760 Voce Populi Halfpenny Nelson-4 R1 F12. Sharpness VF20 but the planchet is covered with very fine granularity. No marks. Reddish brown with lighter brown highpoints. LDS. Weight 111.8 grains.

007. Voce Populi Halfpenny Nelson-4 R1 VG8. Slightly sharper but the planchet is very lightly corroded and there are traces of shallow verdigris on both sides. The date is clear and legends readable. Rather glossy medium brown with darker olive in protected areas. Weight 111.4 grains.

**DOUBLE STRUCK 1767 FRENCH COLONIES 12 DENIERS**



008. 1767 French Colonies Sol de 12 Deniers. Counterstamped "RF" Double Struck VF25. Glossy light brown with chocolate brown in protected areas. No defects. Double struck on both sides, the offset about 1 millimeter. In addition, there is a minor clip in the planchet that affects the dentils on both sides, as struck. Weight 186.1 grains.

**DOUBLE STRUCK 1775 COUNTERFEIT BRITISH HALFPENNY**



009. 1775 Counterfeit British Halfpenny Double Struck. VF35. Glossy chocolate brown. No defects. Double struck, the initial strike 25% off center to K-11.5, the second strike properly centered. Weight 108.6 grains.

010. 1787 Connecticut Miller 1.2-C R3 "Mutton Head" PCGS graded EF45. Slightly glossy dark olive with a lighter tone on the highest points. No marks or verdigris, but the planchet is covered with uniform microscopic granularity. Late die state with both dies heavily lapped causing portions of the date and legend to be missing. EAC graded net VF30.

D1. A set of Fugio photographic attribution plates. These are becoming quite difficult to locate. All proceeds from the sale of this lot go to EAC.

**BOLDLY DOUBLE STRUCK MILLER 16.2-NN.1**



011. 1787 Connecticut Miller 16.2-NN.1 R5 EF40. Boldly Double Struck. Choice glossy light brown and tan. Virtually perfect in every respect, especially so for a Connecticut copper. Double struck, the second strike 50% off center to K-3 on the obverse and K-6 on the reverse. An exceptional piece. Weight 140.4 grains. Ex Dellmuth's, Louisville, Kentucky 1972. (cover coin)

CONDITION CENSUS LEVEL M.33.4-q



012. 1787 Connecticut Miller 33.4-q R6 VF25. Glossy medium brown with lighter brown highpoints. No notable signs of contact, but there are a few shallow fissures in the planchet on both sides, strongest before the forehead and over the second 7 in the date. Later die state, the cracks strong. Struck very slightly off center towards the top of the obverse and bottom of the reverse causing the bottom of the date to be off the planchet. An attractive example of this rare variety. Superior to the Taylor piece and at least equal to the Perkins coin.



013. 1787 Connecticut Miller 33.17-gg.2 R3 VF20. ET LIR variety. Glossy medium brown. There is a linear void in the planchet running down from the throat and a small void on the globe on the reverse, both as struck. Struck slightly off center to K-1.5 and the lower half of the date is off the planchet. Weight 160.5 grains.



014. Connecticut Miller 37.6-K.4 R6 VG10. Glossy chocolate brown with light brown highpoints. The planchet is relatively smooth but the obverse is covered with very fine striations running from northeast to southwest. Uneven strike, the upper obverse and lower right reverse softly struck. The date is bold. Weight 134.0 grains.

015. 1787 Connecticut Miller 43.1-Y R2 VF25. CONNFC variety. Ten points sharper but the planchet is minutely rough and there is a fine hairline scratch from the shoulder down to the globe on the reverse. Slightly glossy dark olive with medium brown highpoints. Weight 143.8 grains.



016. New Jersey Maris 6-D R1 VF30. Glossy dark chocolate brown with lighter steel brown highpoints. There is a dull dent on the shield under M that causes a very slight bulge at the nose of the horse. Weight 149.7 grains.

017. 1786 New Jersey Maris 14-J R1 VG10. Choice glossy medium brown. No defects, just honest wear on a smooth, defect-free planchet. LDS with swelling in the center of the obverse and a die crack through 786. Weight 141.2 grains.

018. 1787 New Jersey Maris 52-1 R3 F15. Slightly sharper with a patch of shallow corrosion on the left side of the shield. Otherwise the planchet is a rather smooth and slightly glossy olive brown and chocolate. Weight 145.0 grains.



019. 1788 Vermont Ryder-27 R1 VF20. Glossy dark olive with lighter steel brown highpoints. A small, dull rim nick over L in LIB is the only mark. Weight 112.5 grains.



020. 1787 Fugio Cent Newman 3-D Club Rays R3 F15. Slightly sharper with traces of very minor roughness and a couple tiny specks of verdigris on both sides. Somewhat glossy light brown with darker olive toning in the protected areas. Weight 153.8 grains.



024. 1787 Fugio Cent Newman 13-R R5 VF20. Rather glossy dark olive and chocolate center. A small rim nick at link 5 is the only mark. Struck slightly off center to K-8 on the obverse and K-12 on the reverse. Weight 161.8 grains.



021. 1787 Fugio Cent Newman 3-D Club Rays R3 VG10. Smooth glossy medium brown and chocolate. The only defect is a small planchet fissure at the rim right of the sun. Otherwise choice for the grade. Weight 151.4 grains.



022. 1787 Fugio Cent Newman 10-G (1 over horizontal 1) R-6+ F15. Sharpness VF30 but the planchet is covered with uniform light to moderate granularity. The only mark is a dull nick in the top ring. The planchet is free of fissures or verdigris, but there is a very minor clip in the planchet left of the base of the sundial, as minted. The 1 over horizontal 1 is visible. Later die state with a strong crack through the F in FUGIO and several cracks on the reverse. A decent example of this rare and popular variety. Weight 143.7 grains.



023. 1787 Fugio Cent Newman 13-R R5 VF30. Sharpness near EF40 but there are two patches of very light verdigris on the upper reverse. Otherwise the planchet is a choice glossy medium brown with virtually perfect surfaces. Weight 170.2 grains.

CHOICE CROSBY 2-A NOVA CONSTELLATIO



025. 1785 Nova Constellatio Crosby 2-A R6- EF40. Choice glossy medium brown. Well struck and virtually perfect. A short, light scratch over the L in LIBERTAS is the only defect. Superior to the Carlotto plate coin and any of the examples offered in the annual C-4 sales. Certainly one of the finest known of this rare variety. Weight 126.3 grains. Ex Harley G. Miller, Wollenberg, Germany, 10/82.

CHOICE WASHINGTON SMALL EAGLE CENT



026. 1791 Washington Cent with Small Eagle Reverse Breen-1217 PCGS graded AU50. Nice glossy chocolate brown and steel. No defects. EAC graded EF40.

TOKENS & MEDALS



027. 1836 First Steam Coinage Medal Original 22 Feb issue (Julian-MT 20a) VF30. Glossy medium brown and chocolate. No defects, nearly choice. This original was struck in very limited quantities in anticipation of the ceremony recognizing our first steam coinage. They were struck on regular large cent planchets at the mint using the new steam-powered coinage press. The ceremony was delayed and the dies were repunched to read MAR 22 and a larger quantity was struck for the opening ceremony. Most of the examples seen today are copies of the March issue using dies made in 1862. A very scarce piece recognizing an important milestone in our mint's history.

028. 1838 Hard Times Token Low-54 (AM I NOT A WOMAN & A SISTER) EF45. Glossy steel brown and chocolate with traces of very faded red in protected areas, possibly from an old recoloring. Nicely struck EDS. An attractive example of this popular anti-slavery issue.

HALF CENTS



029. 1794 C-1a R3 VF20. Glossy light to medium brown with steel brown toning on the highpoints. A thin, light nick on the bust and an even lighter one in the field under L in LIBERTY are the only defects, and they are trivial. A very attractive example, nearly choice. Manley state 3.0. The reverse is rotated 30 degrees CCW. Weight 102.1 grains. Ex Tom Reynolds 4/95.

030. 1794 C-4a R3 AG3+. Blundered Edge. The obverse is better, perhaps G5, while the reverse is weaker and only half the legend can be made out. The date is strong and most of LIBERTY is clear. Glossy medium brown with some darker olive toning in protected areas. The planchet is mostly smooth but there are traces of very minor roughness on the reverse. Basically just a well worn half cent. Manley state 1.0. The edge lettering is blundered reading TWO HUNDREDOR A DOLLAR. Weight 104.1 grains.



031. 1794 C-4a R3 AG3. Blundered Edge. Sharpness VG8 but the right edge is flattened a bit obliterating TY and ERICA. A dull dent on the dentils under 94 is the only other defect. Glossy medium brown. Manley state 2.0. The date is bold. The edge lettering is slightly blundered with HUNDRED and FOR jammed together, the F nearly on top of the D.



032. 1794 C-4a R3 G6. Glossy dark chocolate brown with steel brown highpoints. There are a few old, very light scratches above and below HALF and a small rim nick over E in STATES. The date and legends are all clear. Nice for the grade. Manley state 4.0 with very heavy swelling at the lower curls. Ex Superior 5/30/94:55.



CONDITION CENSUS LEVEL 1794 C-7



033. 1794 C-7 R5 VF20. Double Profile. Glossy steel brown and chocolate. The planchet is smooth and free of any trace of corrosion. There is a tiny planchet chip on the bust, a small pinprick over the first A in AMERICA, plus and a couple light marks on the rim at the bottom of the reverse. Manley state 2.0 with a double profile on the lower half of the nose, lips, and chin. In the middle of the condition census for this tough variety. (cover coin)

CHOICE 1795 C-2b



035. 1795 C-2b R6+ VG8. Thin Planchet. Choice glossy medium brown with a half dozen small splashes of dark chocolate toning on the obverse. There is a faint, thin scuff on the chin and a trace of microscopic roughness on the lowest curls, but overall this piece is very nice for the grade. Everything is bold except for ENT in CENT, which was weakly struck. Weight 78.6 grains.



034. 1794 C-8 R5 VG10. Sharpness VF25 but the planchet is uniformly covered with fine granularity. No marks or verdigris. Steel brown, the surfaces mostly matte, although the reverse does display a bit of gloss. Manley state 2.0. Weight 107.3 grains. Ex 1999 EAC Sale, lot 45.

## The 2001 EAC Convention Sale, March 31, 2001



036. 1795 C-3 R5+ G5. Slightly sharper with a few light marks in the field under the chin and a dull, light scrape from AL in HALF down to the top of E in CENT. The date and legends are clear. Somewhat glossy light to medium brown with darker olive brown toning in protected areas. The planchet has a very minor clip at K-9, as struck. Manley state 2.0. HALF CENT is complete but not strong. Weight 76.1 grains.



037. 1795 C-4 R3 VF20. Slightly sharper but there are a couple hairline scratches from the dentils through M curving down along the wreath to the bow. Otherwise the planchet and surfaces are very nice. Choice glossy medium brown. Manley state 2.0. The center of the reverse is softly struck, as usual, so portions of HALF CENT are very weak. Weight 76.9 grains. Ex Willard C. Blaisdell-Del Bland 10/8/76.



038. 1795 C-4 R3 F15+. Clipped Planchet. Glossy medium brown and chocolate with traces of frosty tan in protected areas. Nearly choice. The only marks are a tiny pit near the dentils right of Y, a small, very light rim bruise at this same area, and a tiny scratch under the second T in STATES. None of these defects is at all distracting and the eye appeal is excellent. Manley state 2.0. Portions of HALF CENT are weak, as usual. The planchet has a rather large, curved clip behind the cap reaching inside the dentils but not affecting the legend. Weight 80.2 grains. Ex Roger Cohen 9/88.



039. 1795 C-4 R3 VG10. Slightly sharper but recolored glossy light brown and chocolate with some darker olive and steel toning in protected areas. The planchet is smooth and the only marks are a few tiny rim bruises on both sides. Manley state 2.0 with the usual weakness at HALF CENT. Weight 79.0 grains.



040. 1795 C-5a R3 F15. Thin Planchet. Sharpness VF20 but there are a few too many light contact marks for the higher grade. The only notable marks are a faint hairline down from the chin, a curved, light scratch at the rim left of the date, and a small rim bruise at CA in AMERICA. Choice glossy medium brown and chocolate. The fields behind the head and on the upper left of the reverse are slightly uneven from pre-striking planchet roughness, as minted. Weight 77.4 grains.



041. 1795 C-5b R4 G4. A couple points sharper with a scratch from the bottom of the cap through the Y to the rim plus a dozen small carbon spots on the lower left portion of the obverse. Glossy medium brown and chocolate. The date is faint, as usual, but the 95 can be made out. LIBERTY is clear, as is most of the reverse legend. Struck on a thick planchet that is clearly out-of-round. Most likely cut too near the edge of a spoiled cent planchet. Weight 116.6 grains.

042. 1795 C-6a R2 G4. Thin Planchet. Struck on TAL cent. Slightly sharper with four light scratches in the field left of the lowest curls. Otherwise the planchet is smooth and free of marks. Glossy dark chocolate brown. The date and legends are all legible. Manley state 1.0. The TAL undertype shows at LIBERTY and the date. Weight 81.8 grains.



043. 1795 C-6a R2 VG8+. Sharpness F12 or better but the lower half of the obverse is covered with extremely fine roughness and the date area shows a few faint hairline scratches. The date is readable but a bit weak while everything else is bold. Rather glossy dark chocolate brown and steel with frosty light brown and tan in protected areas of the reverse. Manley state 2.0. Weight 79.2 grains.



044. 1797 C-1 R2 VF25. Laminated Planchet. Glossy dark steel brown and chocolate. There are a couple faint hairlines and nicks on the obverse, but the eye is instantly drawn to a bisecting lamination passing through T in LIBERTY down to the lower haircurls. The upper end of this lamination is peeled back slightly. Manley state 3.0. A net grade is up to the bidder, since an error collector will see beauty where a "normal" collector will see something far less attractive.



045. 1797 C-1 R2 F12. Heavy 92.3-grain planchet. Uniform glossy steel brown and chocolate. No marks or other defects, and no evidence of undertype. Very nice for the grade. LDS, Manley state 5.0.



046. 1797 C-3b R4 VG8. Lettered Edge. Struck on spoiled cent planchet. Slightly sharper but there is a light scuff in the field above the head and the planchet is not perfectly smooth. Recolored dark steel brown. The date is bold and legends strong. Manley state 1.0. Apparently struck on a spoiled cent planchet with a deep depression at the bottom of the reverse, as minted. Weight 69.6 grains. Ex Mike Demling 4/97.



047. 1800 C-1 R1 VF30. Laminated planchet. Glossy steel brown. A couple light hairline scratches are hidden in the lower haircurls, but overall the surfaces are free of marks. However, the reverse is bisected by a rather strong lamination from the rim at K-12 down to the rim at K-5, and the lower end of the lamination has peeled back a bit. A good mate for the 1797 C-1 described earlier. Manley state 3.0. Ex McCawley & Grellman Auctions 1/6/96:71.



048. 1802/0 C-2 R4 VG8. Overdate 2 over 0. Recolored glossy chocolate and light olive brown. There are a few tiny rim nicks at LIBE and another at the bust tip, none distracting. Manley state 2.0. Well struck with HALF CENT bold and the overdate strong.



049. 1802/0 C-2 R4 NGC graded F15. Overdate 2 over 0. Glossy steel brown and chocolate with some lighter brown in protected areas of the reverse, probably from an old recoloring. The only marks are a few very faint hairline scratches on the neck and lower curls, but it takes a strong glass to see them. Manley state 2.0. The overdate is sharp and the reverse is rotated 15 degrees CCW. EAC graded F12. (cover coin)

050. 1803 C-3 R1 VG10. Double Profile. Glossy chocolate brown. There is a light hairline on the upper part of the neck, a dull rim nick at L, and a shallow chip out of the planchet in the dentils at CA in AMERICA. Rare EDS, Manley state 1.0. There is a fine double profile on the forelock, upper part of the forehead, and along the upper portion of the bust. Ex McCawley & Grellman, 1/8/94:41.



051. 1804 C-1 R3 F12. Slightly sharper with a dull rim nick behind the head and a few very light contact marks on both sides, none notable. Nice glossy medium brown and chocolate. Manley state 2.0, the crack at the top of the reverse strong.



052. 1804 C-4 R5 G5. Low 4. Several points sharper but the planchet is covered with very fine porosity and there is a tiny scratch under the bust just right of the date. Somewhat glossy dark olive. The date and legends are all clear. Rare LDS, Manley state 3.0.

## The 2001 EAC Convention Sale, March 31, 2001

### THE LANNY REINHARDT REFERENCE COLLECTION OF 1804 COHEN-6 DIE STATES

The following group of Cohen-6 die states are from the reference collection owned by Lanny Reinhardt. The Braig die state attributions were determined by Lanny.



053. 1804 C-6 R2 F12. Spiked Chin. Braig state .9. Glossy steel brown and chocolate. Ex Tom Katman 7/22/96.



054. 1804 C-6 R2 F12. Spiked Chin. Braig state 1.2. Sharpness VF20 with a few faint hairline scratches on both sides. Glossy chocolate brown. Ex L & C Enterprises 2/1/93.



055. 1804 C-6 R2 VG10. Spiked Chin. Braig state 1.5. Five points sharper with too many microscopic marks on the obverse. Glossy steel brown and chocolate. Ex Tom Reynolds 1/95.



056. 1804 C-6 R2 F12. Spiked Chin. Braig state 1.5 late. Sharpness VF20 with too many tiny contact marks on the obverse and a dull rim nick at U in UNITED. Rather glossy steel brown and chocolate with olive toning in protected areas. Ex Tom Katman 7/22/96.



057. 1804 C-6 R2 VG7. Spiked Chin. Braig state 1.5 to 1.8. Slightly sharper but recolored glossy dark chocolate with some lighter brown highpoints. A pair of faint hairline scratches in the field before the face. Ex Joel Rettew.



058. 1804 C-6 R2 VG10. Spiked Chin. Braig state 1.9. Glossy chocolate and steel brown. The only mark is a rim nick at ER in LIBERTY. Ex Tom Reynolds 11/95.



059. 1804 C-6 R2 VG7. Spiked Chin. Braig state 2.2. Nice glossy medium brown and chocolate. A small, very light scuff under the earlobe and a tick high over A in HALF are the only defects. Lanny says this is an extremely rare die state. Ex Wally Gilligan, Bowers & Merena 5/27/94:69.



060. 1804 C-6 R2 VG8. Spiked Chin. Braig state 2.2 to 2.5. Sharpness F12 with dull, light nicks on both sides, strongest on the bust. Glossy chocolate and light olive brown. Another very rare die state. Ex Chris Young.



061. 1804 C-6 R2 VG8. Spiked Chin. Braig state 2.2 to 2.5 A. A couple points sharper with a curved, light scratch on the neck and a small spot of carbon left of the hair ribbon. Glossy medium brown. Another example of this very rare die state.



062. 1804 C-6 R2 F15. Spiked Chin. Braig state 3.5. Slightly sharper with too many microscopic ticks on the obverse and a small planchet flake on the shoulder. Glossy steel brown. Ex Mike Hartshorne.

## The 2001 EAC Convention Sale, March 31, 2001



063. 1804 C-6 R2 VG10. Spiked Chin. Braig state 3.5. Slightly sharper but the planchet is covered with uniform microscopic granularity. Slightly glossy dark chocolate brown with lighter steel brown highpoints.



064. 1804 C-6 R2 VG10. Spiked Chin. Braig state 4.0 late. Sharpness VF20 but the planchet is covered with microscopic granularity and there are some faint hairlines on the obverse. Rather matte dark steel brown. Ex Tom Katman 7/96.



065. 1804 C-6 R2 VG10. Spiked Chin. Braig state 4.0 to 4.5. Glossy dark chocolate brown and steel. Ex Bowers & Merena 9/95:3330.



066. 1804 C-6 R2 VG10. Spiked Chin. Braig state 4.5. Glossy dark steel brown and chocolate. A collection of pinpricks at ES-O. Ex Chris Young.



067. 1804 C-6 R2 VG7. Spiked Chin. Braig state 5.0. Choice glossy chocolate brown.



068. 1804 C-6 R2 VF20. Spiked Chin. Braig state 5.5. Sharpness VF30 but there are some small patches of very light carbon and faint hairlines on the obverse. The reverse is problem-free. Glossy dark chocolate brown and steel. Ex McCawley & Grellman Auctions 6/5/93:25.



069. 1804 C-6 R2 VG8. Spiked Chin. Braig state 5.5. Lightly burnished long ago, now retoned an attractive glossy steel brown and chocolate. Ex Wally Gilligan, Bowers Merena 5/27/94:74.



070. 1804 C-6 R2 VF20. Spiked Chin. Braig state 6.0. A few light contact marks on both sides, none notable or distracting. Glossy mottled mix of steel brown and chocolate. Ex Tom Reynolds.



071. 1804 C-6 R2 VG8. Spiked Chin. Braig state 6.0 late. Die state with the deep depression on the top of T in UNITED (crud on the die). Slightly sharper but the planchet is covered with minute roughness. Rather glossy dark steel brown. Ex Larry Briggs.



072. 1804 C-6 R2 F12. Spiked Chin. Braig state 6.5. Sharpness VF20 but the planchet is covered with microscopic granularity. Dark steel brown, lighter on the highpoints. Ex Apache Coin.



073. 1804 C-6 R2 VG10. Spiked Chin. Braig state 7.0. Sharpness VF20 but the surfaces are covered with very fine granularity. Matte steel brown, lighter on the highpoints. Ex Jules Karp 6/12/96.



074. 1804 C-6 R2 VG7. Spiked Chin. Braig state 7.0. Choice glossy medium brown and chocolate.



075. 1804 C-6 R2 F12. Spiked Chin. Braig state 7.2. Sharpness VF20 but the planchet is covered with microscopic roughness and there are a half dozen tiny pinpricks on the obverse. Steel brown, darker in the protected areas.



076. 1804 C-6 R2 VG10. Spiked Chin. Braig state 7.2. Slightly sharper with a dull rim nick left of L in LIBERTY. Glossy steel and chocolate brown. Ex B. Miller 3/15/84-Lanny Reinhardt 1/7/94-Rick Coleman 6/6/96.



077. 1804 C-6 R2 VG8+. Spiked Chin. Braig state 7.2. Nice glossy chocolate brown. No defects. Ex Mike Hartshorne 6/95.



078. 1804 C-6 R2 F12. Spiked Chin. Braig 7.2 late. Sharpness VF25 with many faint hairline scratches on the head and other tiny contact marks scattered about both sides. Glossy dark steel brown and chocolate. Ex Bob Miller 3/12/90.



079. 1804 C-6 R2 G4. Spiked Chin. Braig state 7.5. No defects, just honest wear. Glossy steel brown and chocolate.



080. 1804 C-6 R2 VG10. Spiked Chin. Braig state 8.0. Slightly sharper with a few faint hairline scratches on the obverse. Glossy bluish steel brown and chocolate. Ex Don Valenziano.



081. 1804 C-6 R2 VG8. Spiked Chin. Braig state 9.0. The latest state seen. Slightly sharper but the planchet is minutely rough, the roughness so minor that the surfaces display a decent amount of gloss. Dark chocolate brown. A thin but strong cud break joins the O in OF to the dentils. Ex Tom Katman and the piece he used to describe the die state in his 1975 Penny-Wise article.

(END OF LANNY REINHARDT REFERENCE COLLECTION)

D2. An unusual set of photographs alleged to be before and after pictures of Lanny Reinhardt, illustrative of the dramatic effects of die state collecting and the challenging nature of proper attribution. All proceeds from the sale of this lot, go to EAC.



082. 1804 C-6 R2 VF30. Spiked Chin. Braig 1.45 early, Manley 2.0. Slightly sharper with a dull scuff on the neck and a rim nick at R in LIBERTY. Glossy light olive brown with traces of reddish tan in protected areas, possibly from an old recoloring. Nice eye appeal in spite of the minor defects. A Braig state missing from the reference collection.



083. 1804 C-6 R2 VF20. Spiked Chin. Braig 1.5, Manley 2.2. Slightly sharper but recolored glossy bluish steel brown and chocolate with traces of tan in protected areas of the obverse. No marks or other defects.



084. 1804 C-6 R2 F15. Spiked Chin. Braig 1.8, Manley 2.5. Sharpness VF30 with a dull dent at CE in CENT causing a slight bulge in the hair right of the ribbon. A few faint hairline scratches on the obverse, none of any consequence. Nice glossy chocolate brown.

085. 1804 C-6 R2 G6. Spiked Chin. Braig 1.8 late, Manley 2.5. Glossy steel brown and chocolate. No defects, just wear.



086. 1804 C-6 R2 VG8. Spiked Chin. Braig 4.0 late, Manley 6.0. Slightly sharper with a few nicks on the obverse, including an obvious one in the field before the eye and another left of the L in LIBERTY. Glossy steel brown and chocolate. Ex Gene Braig 1991-Wally Gilligan, Bowers & Merena 5/27/94:73.



087. 1804 C-6 R2 VF25. Spiked Chin. Braig 6.0, Manley 9.0. Glossy mottled mix of medium brown and darker olive. A few trivial ticks, strongest a tiny nick over the hair ribbon.



088. 1804 C-6 R2 VF25. Spiked Chin. Braig 6.0, Manley 9.0. Version with the deep depression on the top of T in UNITED where something was stuck on the die for a short while. Slightly sharper with a few light contact marks hidden in the hair over the ear and a light scratch on the cud break over E in AMERICA. Glossy dark steel brown and chocolate. Ex Bowers & Merena 10/26/2000:54.

089. 1804 C-6 R2 VF20. Spiked Chin. Braig 6.0, Manley 9.0. Ten points sharper but there are three shallow voids in the planchet, as struck. These are at the drapery at the bottom of the neck, on the back edge of the shoulder, and in the hair under R in LIBERTY. Of these, only the first catches the eye. Glossy chocolate brown with a small spot of reddish brown toning on the neck. Ex Gino Sanfilippo.

090. 1804 C-6 R2 F12. Spiked Chin. Braig 6.0, Manley 9.0. Slightly sharper but recolored glossy chocolate brown and steel. A thin nick on the neck.

091. 1804 C-6 R2 F15. Spiked Chin. Braig 8.0, Manley 11.0. Sharpness VF25 with several light contact marks on both sides, none notable or distracting. Glossy chocolate brown.



092. 1804 C-6 R2 VF25. Spiked Chin. Braig 9.0, Manley 12.0. Glossy light brown with medium brown in protected areas and a few small spots of darker olive toning on the obverse. The only notable contact marks are a small pinprick at the leaf tip under the right side of F in OF and another over the right top of T in CENT. Very rare terminal die state with the small cud break at the top of O in OF.



093. 1804 C-7 R4+ G4. Spiked Chin. Very slightly sharper but the planchet is minutely rough and was lightly cleaned. Rather glossy light steel brown with dark steel in the protected areas. The date and legends are all legible. LDS. Manley state 7.2. In addition, there is a star clearly impressed into the cud break over E in AMERICA. Rather curious. A very rare die state, the star being a "bonus." Ex Roger Cohen, Superior 2/2/92:179.

094. 1804 C-8 R1 F12+. Spiked Chin. Nice glossy medium brown and chocolate. A few microscopic contact marks away from choice. Rare EDS. Manley state 2.0 early, the crack to R very faint.

095. 1804 C-8 R1 NGC graded AU58. Spiked Chin. Frosty light olive brown and steel. The surfaces are smooth and lustrous. There is a faint hairline scratch high on the neck, a light mark in the hair near the top of the ribbon, and a few dull, light rim nicks at the bust tip. Manley state 3.0. EAC graded AU50.

096. 1804 C-8 R1 VF35. Spiked Chin. Sharpness EF40 but there are small nicks on both sides, mostly on the obverse. None of these marks is significant but there are too many for the higher grade. Glossy medium brown and chocolate. Manley state 3.0.

### DOUBLE STRUCK OVERSE 1804 C-8 R1 SPOKED CHIN



097. 1804 C-8 R1 EF45. Spiked Chin. Double struck obverse. Glossy steel brown and chocolate with lots of frosty golden tan in protected areas and a few small spots of darker steel toning on the obverse, including a small carbon spot in the field left of the lower curls. A small rim nick well left of the date, otherwise free of contact marks. LDS. Manley state 6.0, with a retained cud break over LIBE just reaching the R. The entire obverse is double struck, most likely a severe chatter strike since the reverse has no doubling.



098. 1804 C-10 R1 EF40. There are a few light nicks on the neck and a dull rim nick at TA in STATES. Attractive glossy medium brown with some frosty tan in protected areas. Manley state 2.0.





099. 1804 C-11 R3+ EF40. Plain 4 with Stems. Glossy medium brown and chocolate. Nearly free of contact marks. A tiny rim nick at R in LIBERTY and a very light rim bruise at D in UNITED. Manley state 2.0. An attractive example of this popular variety.



101. 1804 C-12 R2 AU55. Crosslet 4 without Stems. Sharpness mint state with too many tiny contact marks to justify a mint state grade. Lustrous golden light steel brown and tan. Sharp die clashmarks show behind the head and obvious die rust is in the obverse fields. Ex Bowers & Merena 3/6/97:11.

DOUBLE STRUCK 1804 C-11



100. 1804 C-11 R3+ F12. Plain 4 with Stems. Double Struck. Slightly sharper with some fine hairline scratches on both sides, plus a stronger scratch under ALF in HALF. Attractive glossy medium brown and chocolate. Manley state 2.0. Double struck, the offset less than a millimeter. Doubling is very clear on both sides, with a bold double profile on the portrait and strong doubling on most of the wreath.

1804 C-13 DOUBLE STRUCK OVER OBERVERSE BROCKAGE



102. 1804 C-13 R1 VF30. Double struck over obverse brockage. Plain 4 without Stems. Glossy chocolate brown and light olive. A couple minor contact marks in the left obverse field, but overall very nice for the grade. Manley state 2.0. Double struck with both strikes properly centered. The first strike was an obverse brockage. The second strike was rotated about 150 degrees CCW from the first and has the obverse over the original obverse and the reverse over the obverse brockage. The strongest undertype is the top of the head at the bust tip, the hair ribbon in the field at the lips, and the incuse E and upper hairwaves of the brockage at OF. A close examination reveals more undertype on the obverse, but you get the idea. An attractive example of a really neat double-error half cent.

1804 C-13 DOUBLE STRUCK



103. 1804 C-13 R1 VF30. Double Struck. Plain 4 without Stems. Slightly sharper with a dull rim dent left of the lower curls and a pair of tiny nicks under the eye. Glossy chocolate brown with light brown in protected areas. Double struck, the second strike rotated about 10 degrees CW. The doubling is especially bold at the bust and tip of the nose. The reverse does not show any doubling. Manley state 2.0 early, weakly struck on the lower left portion of the reverse. It is possible the reverse was impressed into a blank planchet creating a reverse brockage during the second strike.

SQUARED RIMS 1804 C-13



104. 1804 C-13 R1 VF30. Wide, squared rims. Plain 4 without Stems. Weight 85.8 grains, which is normal. Choice glossy medium brown with frosty tan in protected areas. A small, dull rim nick at TA in STATES and a hairline on the throat. The wide, squared rims give this piece an unusual appearance, but the cause is unknown. Possibly struck on a cut down large cent. Manley state 2.0, the reverse is rotated 10 degrees CW.

105. TRIO OF 1804 HALF CENTS. C-1 R3 VG7. Glossy steel brown and chocolate. Manley state 2.0 early. C-1 R3 VG8. Sharpness F15 with faint hairline scratches on the portrait. Glossy medium brown and chocolate. Manley state 2.0 late. C-9 R2 VG8. Glossy dark steel brown and chocolate. Manley state 5.0 with a strong cud break at RTY. Lot of 3 coins.

SHARP EARLY DIE STATE 1805 C-2



106. 1805 C-2 R6 VG10+. Small 5 with Stems. Sharpness close to VF with a dull scrape on the back edge of the neck, several small nicks on the front edge of the neck and bust, and small spots of microscopic roughness on the obverse. Rather glossy steel brown and chocolate with lots of lighter reddish brown in protected areas, especially on the reverse. Sharply struck EDS. Not perfect but not at all bad for this very rare variety. At the lower end of the condition census.



107. 1805 C-4 R2 VF30. Large 5 with Stems. Sharpness close to VF35 with a short hairline scratch in the field off the chin and a couple light contact marks under the chin. Glossy chocolate brown. EDS. Manley state 1.0.

DOUBLE STRUCK REVERSE 1806 C-1



108. 1806 C-1 R1 EF40. Small 6. Stemless. Double Struck Reverse. Slightly sharper but nicely recolored glossy light brown and tan with darker steel brown toning on the highpoints. No marks, spots, or other defects. The reverse is clearly double struck, the offset .5-1.0 millimeter. However, the obverse shows no evidence of doubling, with the possibly exception of a double mouth. The reverse is not rotated, which is unusual for this variety. Ex Tom Reynolds.

109. 1806 C-1 R1 VF20. Small 6, Stemless. Ten points sharper but the planchet is covered with extremely fine roughness and the reverse shows a couple small patches of very minor verdigris. Slightly glossy dark olive brown and steel. MDS, the reverse rotated 10 degrees CW.



110. 1806 C-4 R1 NGC graded MS62BN. Large 6 with Stems. Frosty tan and light steel brown with a half dozen small spots of darker chocolate toning in the field before the face. There is a dull, light mark in the drapery over the 06 plus a few very light contact marks on the cheek and neck. Manley state 1.0 late, the reverse rotated 40 degrees CW. Repunching on the 6 is clear. Softly struck on the bust tip and portions of the wreath, as usual. EAC graded AU55.

## The 2001 EAC Convention Sale, March 31, 2001



111. 1806 C-4 R1 EF45+. Large 6 with Stems. Slightly sharper but there is a dull, very light scratch under NITE and another over CE in CENT. Frosty steel brown with lustrous reddish light brown in protected areas. Manley state 1.0, the reverse rotated 55 degrees CW. Ex Stack's 6/98:1036.

112. 1806 C-4 R1 VF30. Large 6 with Stems. Choice glossy medium brown. The only defect is a shallow planchet void or low spot (caused by crud on the die) at ED in UNITED, as struck. Manley state 1.0, the reverse rotated 40 degrees CW.

113. 1807 C-1 R1 F12. Slightly sharper with too many tiny nicks on both sides to justify a higher grade, but none of these is distracting. Glossy steel brown and chocolate. Manley state 2.0 early, the obverse slightly misaligned to K-8.



114. 1807 C-1 R1 VF35. Glossy light olive brown with a splash of reddish brown toning at LI in LIBERTY and a small spot of darker olive toning at S-O. The only contact marks are a tiny rim nick left of the date and a small tick under the chin. The protected areas are covered with attractive flowline luster. Manley state 3.0.



116. 1808 C-3 R1 VF30. Sharpness EF40 with a dull rim nick opposite the tip of the nose and another under the first 8 in the date. The obverse is glossy steel brown and reddish chocolate with lots of frosty light brown in protected areas. The reverse is reddish chocolate brown and not as glossy as the obverse due to extremely fine roughness. Manley state 2.0, the reverse rotated 150 degrees CW.



117. 1808 C-3 R1 VF35. Slightly sharper with a small rim nick behind the neck and a shallow flake out of the planchet at OF. Glossy light olive brown and chocolate with delicate overtones of bluish steel. Manley state 3.0 late. Ex Coin Galleries 7/16/97:1493.

118. 1809 C-2 R3 VF25. Slightly sharper with a very dull nick on the shoulder over the 8 and a small rim nick under the 9. Choice glossy chocolate brown. Manley state 3.0, the reverse rotated 135 degrees CW. Ex Superior 9/21/98:1068.



119. 1809 C-3 R1 AU50. Lustrous tan and light steel brown with darker steel brown toning on the highpoints. The surfaces are smooth and nearly flawless. A very faint hairline in the field off the chin and a small void at the dentils over M are the only defects, and they are trivial. Very attractive. Manley state 2.0 with both dies heavily flowlined.

120. 1809 C-4 R3 F12. Circle inside 0. Slightly sharper with a few light contact marks, none notable. LDS. Manley state 2.0.

### VERY RARE MANLEY STATE 4.0 1808/7 C-2



115. 1808/7 C-2 R3 F12. Overdate 8 over 7. Glossy dark chocolate brown. There is a small, round punch mark in the hair left of the earlobe and another just under the knot in the hair ribbon. Otherwise the planchet and surfaces are nearly choice. Very rare Manley state 4.0 with the section over BERT shifted outward slightly indicating the early stage of a retained cud break. The overdate is clear. Ex. Eliasberg.

D3. A copy of *The Half Cent Die State Book 1793-1857* by Ronald P. Manley, Ph.D. signed and inscribed by the author, EAC 2001. All proceeds from the sale of this lot go to EAC.

POSSIBLY FINEST KNOWN 1809/6 C-5



121. 1809/6 C-5 R1 PCGS graded MS63 Red & Brown. Overdate 9 over inverted 9. Choice lustrous light steel brown delicately toning down from original mint color, 20% remaining on the obverse and 60% on the reverse. There is a small, dull tick high on the neck and another in the field under the chin, plus a speck of carbon under the second S in STATES. Otherwise this piece is virtually flawless. Manley state 2.0, the repunched 9 clear. A very attractive example, certainly one of the finest known. EAC grade consistent with the slab grade. (cover coin)

122. 1809 C-6 R1 PCI graded EF45. Glossy dark steel brown and chocolate with frosty light reddish brown toning on the lower left of the reverse. No problems. Manley state 4.0 late with the reverse rotated 145 degrees CCW. EAC graded EF40.

123. 1825 C-1 R3 NGC graded AU55. Steel brown and chocolate. The only marks are a few extremely faint pin scratches under the second A in AMERICA. The surfaces are a bit dull and could use a brushing to bring out the gloss and luster. Manley state 2.0, the reverse rotated 150 degrees CW. EAC graded EF45.

124. 1826 C-1 R1 ANACS graded MS62 Brown. Lustrous steel brown with traces of frosty tan faded down from mint color in protected areas. Just a touch of very light friction on the highest points and a small patch of very light verdigris under the 6 in the date. Manley state 5.0. EAC graded AU55.

125. 1826 C-2 R3 VF25+. Glossy light olive brown. There are some very light nicks on the obverse, none notable, and a sharp nick under the right foot of N in CENT. Manley state 2.0.

126. 1828 C-2 R2 AU50. 12-Star Obverse. Lustrous golden light brown with a few splashes of reddish brown and olive toning on both sides. No contact marks, just a bit of light friction on the highpoints. EDS, Manley state 1.0. There is strike doubling on the reverse, clearest on the right side.



127. 1828 C-2 R2 VF25. 12-Star Obverse. Misaligned Obverse. Slightly sharper but recolored glossy bluish steel brown with frosty light brown in protected areas. No notable marks. Manley state 2.0. The obverse is badly misaligned to K-5 while the reverse is properly centered. Haven't seen another.



128. 1828 C-2 R2 AU50. 12-Star Obverse. Frosty bluish steel brown with underlying faded mint red on both sides. There is a small spot of very shallow carbon left of star 12 and a small nick at the junction of the neck and bust. LDS, Manley state 3.0.

129. 1828 C-3 R1 ANACS graded MS60 Red & Brown. Frosty golden tan with light steel brown toning on the highest points. The only defect is a tiny carbon spot in the field left of star 11 and this spot of surrounded by a small stain of slightly darker toning. Manley state 4.0. EAC graded net AU55.

130. 1829 C-1 R1 AU50. Glossy light brown with frosty tan in protected areas. There is a tiny speck of carbon on the left foot of the 1 and a very faint hairline under the bust tip. Manley state 2.0.

131. 1832 C-3 R1 PCI graded AU55. Recolored frosty reddish steel brown with bluish steel overtones and rose tones in protected areas. There is a tiny speck of carbon on the top of A in HALF. Needs a decent recoloring. LDS with a light die crack from the tip of the bust to the dentils. EAC graded net EF45.

132. 1832 C-3 R1 VF30. Sharpness EF45 with tiny contact marks scattered about the obverse, strongest on the cheek. Nice glossy medium brown with frosty light steel brown in protected areas. LDS with the crack from the bust tip to the dentils.

BRILLIANT MINT RED 1833 C-1



133. 1833 C-1 R1 MS63. Bright original mint red starting to delicately tone down to light steel brown on the highest points, about 85% of the red remaining. There are a few dozen tiny specks of dark toning on both sides and some of these show traces of very light carbon. The most notable mark is a small patch of light carbon in the field at the browlock. Manley state 2.0 with strike doubling on AMERICA. (cover coin)

134. 1833 C-1 R1 AU55. Frosty bluish steel brown and chocolate with medium brown toning on the right side of the reverse. Just a few trivial ticks on both sides, including one on the rim at the bust tip. Manley state 2.0.

135. 1834 C-1 R1 AU58. Sharpness mint state with a few microscopic contact marks on both sides and a struck-through void from the throat to star 2. Glossy light olive brown. EDS, Manley state 1.0, without die clashmarks on either side. Ex Bowers & Merena 9/14/92-92.

136. 1834 C-1 R1 AU58+. A trace of very light rub on the highest points away from mint state. The only mark is a minor lamination on the edge under the stem tip, as struck. Manley state 2.0 with some prooflike surface under ENT from a fresh die lapping.

137. 1834 C-1 R1 ANACS graded AU53. Clipped Planchet. Nice glossy chocolate brown. There is a minor clip in the planchet, as minted, that weakens the dentils left of the date and opposing ones at AT in STATE. Manley state 2.0. EAC graded EF40+.



138. 1835 C-2 R1 F12. Counterstamped. Brunk-29995-A. Sharper but there are some hairline radial scratches on both sides, mostly on the reverse. Glossy medium brown. Counterstamped on the obverse with O & G inside a circle of beads and one star above, two below.

139. 1837 Half Cent Token Low-49 EF40. Slightly sharper with a thin lamination in the planchet from 18 to the rim at ST in STANDARD. Otherwise free of defects. Nice glossy light brown.

ORIGINAL PROOF 1841 C-1



140. 1841 Breen 1-A Proof Original R6 PCGS graded Proof-55. Glossy light brown. There is a touch of light wear on the highest points of the design and very light rim bruises under 18 and at star 3. The fields are smooth but not reflective. Breen state III, the obverse die crack strong. EAC graded Proof-45+.

CHOICE 1846 C-1 SECOND RESTRIKE



141. 1846 Breen 1-C Second Restrike R6 Proof-63. Attractive chocolate and light brown with hints of underlying very faded mint color, especially on the reverse. The fields are highly reflective. No spots and only very minor hairlines. A very attractive example. Ex. Byron Reed.

142. 1849 C-1 R2 NGC graded MS63 Brown. Nice glossy medium brown with smooth, lustrous surfaces. There is a dull, barely visible dent on the inner bun and a tiny planchet void in the field right of the main curl, plus a pair of tiny ticks on the chin. Manley state 1.0. EAC graded AU58 with mint state eye appeal.

143. 1851 C-1 R1 AU50+. Close to mint state sharpness but recolored glossy golden light olive with some tan and reddish chocolate in protected areas. Sharp EDS. All the stars are doubled, as are the dentil tips on the lower half of the obverse.

144. 1853 C-1 R1 NGC graded MS63 Brown. Lustrous medium brown. There is a touch of light rub on the highest points and a speck of carbon in the field over star 12. Manley state 2.0 with many fine die lines on both sides from a fresh lapping. EAC graded AU55.

MINT RED 1854 C-1



145. 1854 C-1 R1 ANACS graded MS64 Red & Brown. Mint red toning down to steel brown, half the original red remaining. Choice except for a small carbon spot in the dentils right of star 12. MDS. EAC graded MS63+. (cover coin)

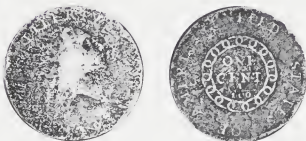
146. 1855 C-1 R1 AU58. Lustrous light steel brown with a speck of darker toning on the bust tip. There are two faint hairlines in the field under star 5 and a small spot of reddish verdigris at the berry left of H in HALF. MDS.



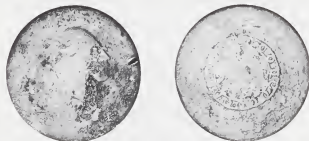
147. 1856 C-1 R1 MS62+. Lustrous bluish steel brown with a trace of faded red on the obverse, 35% remaining on the reverse. There is a very tiny nick on the rim right of star 13. EDS with shallow low spots around HALF CENT. The lump on the top of I in UNITED is dull but visible. Ex Superior 9/19/99:387.

148. 1857 C-1 R2 VF20. Counterstamped "YORK" Brunk-44630-A. Glossy light to medium brown. The "YORK" counterstamp is contained within a serrated rectangle on the obverse.

LARGE CENTS



149. 1793 S-1 R4 G5. Chain AMERI. Sharpness VG8 but the surfaces are lightly corroded, mostly in the fields as the highpoints are smooth. There is no verdigris and the only contact marks are a couple light rim bruises on the right side of the reverse. The date is weak but readable and the legends are complete. Light brown toning on the highpoints with olive brown toning in protected areas. EDS. Not bad for the grade as the date is often missing on lower grade examples of this variety.



150. 1793 S-2 R4+ Fair-2. Chain AMERICA. Somewhat glossy chocolate brown. The date is gone but LIBERTY is readable and most of the fraction are visible. The chain, ONE CENT, and most of the legend are clear, but the remainder of the legend is weak or missing. The planchet is slightly porous, mostly in protected areas. The only mark is a strong rim nick right of the mouth.



151. 1793 S-3 R3- ANACS graded net G6. Chain AMERICA. Sharpness near F15 but the obverse is lightly porous, the reverse finely granular. Steel brown on the obverse with lighter brown and steel tones on the reverse. No rim dents or other notable contact marks, but there are traces of very minor greenish verdigris inside the chain links. The date and legends are clear. EAC net grade consistent with the slab grade.

D4. Jim Nieswinter has recreated the JT Levick plate from the 1869 *American Journal of Numismatics* using his own coins. The S-15 is the identical coin on both plates! Awesome and all proceeds go to EAC.

ATTRACTIVE 1793 S-4 CHAIN CENT



152. 1793 S-4 R3+ VF20. Chain with Periods. Sharpness VF25 but nicely recolored a glossy chocolate brown with overtones of bluish steel. There is a rather strong nick under ER in AMERICA and a small rim nick at ST in STATES. The surfaces are smooth and completely free of any roughness. MDS. A very nice Chain cent. Comes with an ANACS photo-grading certificate as VF30/30. Ex John Ashby 6/81.





153. 1793 S-9 R2 F12. Wreath Cent. Recolored glossy reddish brown. The planchet is smooth and virtually free of marks or other flaws. The only defects are a tiny flake out of the planchet in the hair left of the forehead and a tick on the rim left of the date, plus a very light rim bruise at C in AMERICA. EDS.

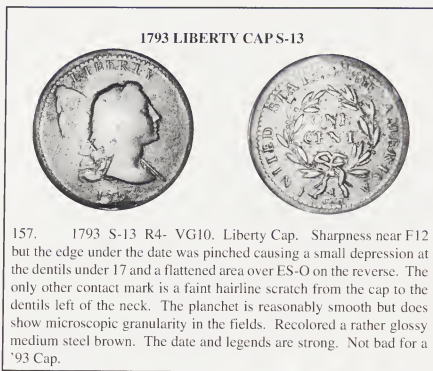
154. 1793 S-10 R4 Fair-2. Wreath Cent. The obverse is a bit nicer with the date and LIBERTY faint but readable. The reverse shows only minor portions of the legend, much of it missing due to planchet voids rather than wear. The obverse is slightly rough, the reverse moderately so. Medium brown and chocolate. There is a mint-made clip in the planchet behind the head and at D-STA on the reverse. Clips of this size are rare on 1793 cents.



155. 1793 S-11b R4 F12+. Wreath Cent with Lettered Edge and Double Leaf. Sharpness near VF20 with a rim bump opposite the tip of the nose, another stronger one at OF, plus a few lighter rim nicks on both sides. The planchet is smooth and free of corrosion except for a few tiny specks of greenish verdigris at the O in ONE. Recolored glossy light to medium brown with splashes of reddish chocolate on both sides. The date, legends, and edge lettering are bold. Not perfect but not bad for a Wreath Cent.



156. 1793 S-11c R3- F12. Wreath Cent with Lettered Edge and Single Leaf. Sharpness F15 or slightly better with small contact marks scattered about both sides. None of these marks is severe or distracting, but there are too many to justify a higher grade. The only other defect is a spot of reddish verdigris at S-O. Mottled glossy medium brown and chocolate. MDS, without the clashed impression of AMERICA in the right obverse field. Comes with an ANACS photo-grading certificate as VF20/20. Ex John Ashby 8/80.



157. 1793 S-13 R4- VG10. Liberty Cap. Sharpness near F12 but the edge under the date was pinched causing a small depression at the dentils under 17 and a flattened area over ES-O on the reverse. The only other contact mark is a faint hairline scratch from the cap to the dentils left of the neck. The planchet is reasonably smooth but does show microscopic granularity in the fields. Recolored a rather glossy medium steel brown. The date and legends are strong. Not bad for a '93 Cap.



158. 1794 S-18b R4 VG7. Head of 1793. Sharpness VF20 but the planchet is covered with fine granularity. The only marks are a tiny pinprick over the T in UNITED and a couple light rim nicks at OF-A. Glossy (in spite of the minor roughness) dark steel brown, probably recolored. The date and legends are complete and the edge lettering is strong. EDS. Ex Dick Punchard.



159. 1794 S-21 R3 AU50. Close to mint state sharpness but the obverse has extremely fine fissures in the planchet running from NNE to SSW, as struck. None of these fissures is at all distracting but there are too many to ignore. The only signs of contact are a couple small, very light rim nicks at R in LIBERTY and another at E in AMERICA. Frosty light steel brown with reddish brown toning in the protected areas. E-MDS, a very fine die crack from the cap to the dentils at the left top of B.

## The 2001 EAC Convention Sale, March 31, 2001

160. 1794 S-21 R3 VG10. Glossy medium brown delicately mottled with some darker steel brown. Probably recolored but the eye appeal is good for the grade and there are no notable marks. E-MDS.



161. 1794 S-23 R4+ VG8. Sharpness near F12. The fields are minutely granular and there is a light rim bruise at the second A in AMERICA. Slightly glossy reddish chocolate brown with golden light brown highpoints, the contrast accenting the details. The date and legends are clear. E-MDS, the crack from the pole to throat light. Ex B. Max Mehl-Dr. Charles Ruby-Walter Breen-Denis Loring-Tom Morley-Jack Robinson. Superior 1/29/89:36-Chris McCawley-Superior 2/8/98:800. (cover photo)



162. 1794 S-24 R1 VF25. Nice glossy steel brown and chocolate. The planchet is choice, smooth and problem-free. The only mark is a tiny nick on the cap. M-LDS, the obverse bisected by a die crack from K-5 to K-11. A choice example. Removed from a PCGS slab graded EF40. Ex 1996 ANA Sale, Heritage 8/14/96:6506.



163. 1794 S-25 R3 F12+. Glossy steel brown and chocolate. Probably recolored but attractive. The surfaces are smooth and the only marks are a light nick under I in LIBERTY, a very light rim bruise under 94, and a couple ticks on the neck. Nicely struck EDS. Ex Joel Spingarn.



164. 1794 S-30 R1 VF35. Five points sharper with traces of extremely fine roughness on the obverse, none visible without a strong glass. No contact marks. Glossy chocolate brown with small splashes of darker olive toning on the lower half of the obverse. LDS with extensive die rust on the reverse. Removed from a PCGS slab graded EF45. Ex 1996 ANA Sale, Heritage 8/14/96:6507.



165. 1794 S-43 R2+ VF30. Slightly sharper with a couple closely spaced hairline scratches in the field under IBE in LIBERTY. Otherwise very nice. Glossy medium steel brown with traces of frosty lighter steel brown and tan in protected areas. MDS. Ex Dr. Charles L. Ruby 12/72-Superior 2/75:40-unknown-1996 EAC Sale, lot 98.



166. 1794 S-44 R1 VG10. Slightly sharper with a few faint hairline scratches in the field under the chin and a small rim nick at the top of the cap. Otherwise the planchet and surfaces are very nice, nearly choice. Glossy medium brown and chocolate. M-LDS, the die cracks strong. Ex Lou Whitaker at EAC '97.



167. 1794 S-47 R4 F12. Sharpness VF30 but the cheek and neck have been smoothed to eliminate fine granularity that covers the rest of the planchet. There are a few faint hairline scratches in the fields, mostly at the tip of the bust and field above. No verdigris or other contact marks. The date and legends are strong. Slightly glossy dark olive. EDS.



168. 1794 S-57 R1 EF40. Slightly sharper with a few minor nicks on the obverse, including one on the 4 and another at the dentils under the left side of the 9, and a minor rim bruise at E in AMERICA. Recolored glossy steel brown with reddish chocolate in protected areas. MDS.

OFF CENTER 1794 S-58



169. 1794 S-58 R3 VG8. Off Center. Mostly glossy medium brown with darker olive brown toning in the protected areas. There are a few very light hairline scratches on both sides, strongest at the top of the obverse, and a couple rim nicks under the lowest curls. Struck 20% off center to K-1. Off center 1794 cents are extremely rare, and this is a nice one. Ex Norman Rau 10/71



170. 1794 S-59 R3- F15. Sharpness EF40. The planchet is covered with very fine granularity, strongest on the reverse. Nearly free of marks, a tiny rim nick at O in OF is about it. Rather glossy very dark olive and steel. M-LDS. A light die crack arcs from the second A in AMERICA through the fraction to the dentils near U. The edge has Homer Downing's yellow ink in the H & D of HUNDRED on the edge.

## The 2001 EAC Convention Sale, March 31, 2001

171. 1794 S-62 R4+ VG7. Slightly sharper, especially on the obverse, but the upper portion of the reverse is weak (due to non-parallel die faces) and there is a dull rim bruise at IT in UNITED. Glossy chocolate brown with medium brown highpoints, the two-tone appearance accenting the details. MDS with a cud break at the rim left of the curls. Nice for the grade.



172. 1794 S-64 R5- F12+. Missing Fraction Bar. Sharpness VF20 with microscopic pitting on both sides, mostly in the fields. The roughness is so fine that the surfaces display a decent amount of gloss. Otherwise there are a few light rim bruises on both sides, strongest opposite the chin, over TES, and at M. Fairly glossy chocolate brown with lighter steel brown highpoints. The missing fraction bar feature is clear. LDS with a strong die crack through D reaching the C in CENT. Ex F.C.C. Boyd 1957-New Netherlands Coin Co. #50. 12/57-967-Lester L. Greenwood-unknown-1996 EAC Sale, lot 106.

173. 1794 S-72 R2 G5. Head of 1795. Slightly sharper but the planchet is covered with microscopic roughness and there are traces of shallow verdigris at ED in UNITED. Dark chocolate brown with some lighter brown highpoints. The surfaces display a good amount of gloss in spite of the minor roughness. The date and legends are all clear. MDS.

### 1795 S-74 WITHOUT EDGE LETTERS

174. 1795 S-74 R4- AG3. Thick Planchet with Plain Edge. A couple points sharper but the planchet is covered with fine porosity. There is a dull scuff on the top of the head and another on the N in CENT. Slightly glossy light brown with darker reddish chocolate in protected areas. Struck on the usual thick planchet (weight 205.7 grains) but without the edge lettering. This planchet obviously missed going through the Castaing machine. Quite rare as such.

### WELL-STRUCK 1795 S-75 LETTERED EDGE



175. 1795 S-75 R3 VF35. Lettered Edge. Glossy medium olive brown and chocolate with lighter brown highpoints. The only defects are a faint hairline scratch in the field under L in LIBERTY and another in the field at the chin, plus a couple trivial voids in the planchet on the cap and field left of the lowest curls, as struck. Nicely struck MDS.



176. 1795 S-76a R5 VG7. Lettered Edge. Sharpness F15. The planchet is covered with fine porosity but there is no verdigris. There is a dull, rather strong scrape on the shoulder over the 9 extending down to the top of the 5, plus a minor rim bruise at Y and another under the fraction. Slightly glossy medium brown with darker olive brown toning in the protected areas.

### CHOICE 1795 S-76B PLAIN EDGE



177. 1795 S-76b R1 EF40. Plain Edge. Choice glossy light brown with steel brown highpoints. Nearly flawless, just a couple microscopic contact marks on both sides. The only identifying mark is a small flake out of the planchet leaving a shallow depression near the center of the cap, as struck. MDS. Very attractive. Ex Bowers & Merena 6/91-603-unknown-1996 EAC Sale, lot 113.

178. 1795 S-76b R1 G6. Plain Edge. Glossy medium brown. The hair details are a bit sharper but portions of the legend are weak, particularly RTY, ST, and MERICA. The date is readable, but the lower half of the 17 is weak. No marks or other defects. M-LDS.

179. 1795 S-77 R3+ G6. Glossy medium brown with light brown in protected areas. There is a small rim bruise opposite the chin and several smaller ones on the reverse, strongest at ES. The date and legends are clear, except for ONE CENT, which is faint at best due to swelling in that area. MDS.



180. 1795 S-77 R3+ F12. Slightly sharper with a rim dent at TA in STATES. Otherwise this cent is choice. Glossy medium brown with lighter brown in protected areas. LDS. A very attractive example for the grade in spite of the rim bruise. Ex Lillian Willins via Bill Noyes 1/11/92.



181. 1795 S-78 R1 AU50. A beautiful mint state cent except for a hairline scratch from the base of B in LIBERTY down to just below the earlobe. Choice lustrous light steel brown and tan with traces of faded mint red in the protected areas. There is a short, light hairline scratch-like void in the planchet near the dentils left of the base of the cap and a few very tiny planchet voids in the field before the face. The reverse is choice. Too bad about the obverse scratch because this one is a beauty. Ex Tom Shlasky 8/81-Chris Young 9/93-Roy Sturgeon.

OUTSTANDING DOUBLE STRUCK 1795 S-78



182. 1795 S-78 R1 EF40. Double Struck. Glossy chocolate brown delicately mottled with slightly lighter and darker shades of brown. There is a very tiny rim nick at the top of the cap, a minor rim bruise at the second A in AMERICA, and a small void in the planchet at the rim under the fraction, as struck. Clearly double struck with a 2-millimeter offset that shows boldly at the cap and along Ms Liberty's profile. Strong evidence of the double strike shows elsewhere on both sides, including a 1 and 0 from the fraction of the first strike on the right ribbon of the second strike. A very attractive example of an impressive mint error. Ex George Ewing at 1988 EAC, possibly ex Dr. Charles Ruby sale #3, lot 75.

183. 1796 S-81 R3- G5. The obverse is a bit better, the reverse weaker. The date and LIBERTY are bold, but UNITED STATES OF is weak. Nice glossy chocolate brown. Very nice for the grade, a couple trivial rim nicks under the right end of the wreath ribbon the only marks. EDS.



184. 1796 S-81 R3- VF20. Ten points sharper but the surfaces are covered with uniform microscopic granularity, the roughness so fine that the surfaces display a good amount of gloss. Dark chocolate brown. No marks. There is a small tab extending out from the rim at NI in UNITED, as struck. MDS.



185. 1796 S-83 R4 VG7. Overstruck, possibly on a TAL cent. Glossy medium brown and chocolate with darker steel brown toning in the protected areas. The obverse is relatively free of marks, but the reverse has some dull nicks plus a scrape from the T in UNITED down into the wreath. MDS. Obviously struck over something, possibly a Talbot Allum & Lee cent. Dentils are visible left of the lower curls and at STAT, something is in the dentils under the bust tip, and part of a letter is in the dentils opposite the tip of the nose. This letter is too small to be from another large cent. Many other traces of undertype, particularly dentils, can be found elsewhere, and their positions indicate the undertype consists of multiple impressions. Diameter is 30 millimeters, which is a bit larger than normal due to the multiple impressions.

**CONDITION CENSUS LEVEL 1796 S-85**



186. 1796 S-85 R5+ VF35. Sharpness EF45 with a dull rim nick under the 1 in the date, and this mark has been partially repaired. There is a light rim bruise at the top of the cap, a couple faint hairline scratches on the portrait, and a collection of light contact marks on the neck. The reverse is nearly choice, just a couple trivial signs of contact. Nice glossy steel brown and chocolate, the fields smooth and somewhat reflective. An attractive cent with good eye appeal in spite of the marks. Tied with the ANS example for second finest known in the Bland census, tied for CC#5 in the Noyes list. Noyes photo #31904. Ex Alan J. Brotman (Numismatic Gallery) - Dr. Bob Shalowitz - William K. Raymond - George Korsing (Coin Den) - Norm Pullen 8/75 - unknown - Bowers & Merena 9/94:1129 - Tony Terranova - R.S. Brown, Jr., Superior 1/27/96:120.



187. 1796 S-87 R3- VF25+. Attractive glossy steel brown and chocolate with frosty tan in protected areas. The only defects are a small, light rim bruise at the top of the cap and a faint hairline scratch over ONE. Nicely struck EDS. Nearly choice and very close to VF30. Ex Don Valenziano 4/96.

188. 1796 S-90 R6- AG3. Glossy steel brown and chocolate. No defects, just honest wear. The date is readable, but the bottoms of the digits fade away, and LIBERTY is clear. Less than half of the reverse is still legible. Upset reverse, as usual.

CC LEVEL 1796 S-97



189. 1796 S-97 R3+ VF20. Sharpness EF45 but the planchet is covered with microscopic porosity, strongest on the obverse. Free of any contact marks or verdigris, but there is a curious line in the field over the bust tip. This line is shaped like a 6 and may be a piece of very fine wire that was struck into the planchet. Glossy dark steel, nearly black. Called AU50 net F15 and tied for CC#9 in the Noyes census, Bland says AU55 net VF30 and tied for CC#5. Ex Anderson Dupont, Stack's 9/24/54:127-Bareford-Herman Halpern, Stack's 3/16/88:119-Joel Spingarn-Dr. George Ewing-1995 EAC Sale, lot 183-John Whitney, Stack's 5/4/99:1731.

LATE DIE STATE 1796 S-99

190. 1796 S-99 R5+ G4. Sharpness VF30 but corroded, most likely lost in soil for some time. The left side of the obverse is relatively smooth and those details are bold, including all of the date, but everything else is weakened by the roughness. Dark greenish olive and steel. LDS with a strong die crack through the hair ribbon.

SHARP 1796 S-104 LIHERTY



191. 1796 S-104 R3+ VF25. LIHERTY Obverse. Ten points sharper but the planchet is minutely rough, the roughness so fine the surfaces display a good amount of gloss. Recolored dark steel and chocolate with specks of medium brown on the obverse. There is a dull, light rim nick at ER in LIBERTY and a tiny rim nick at E in UNITED. LDS with all the cracks and die rust mentioned by Sheldon. Tied for CC#4 in the Bland census, tied for CC#6 in the Noyes list. A nice example of this popular die-cutter error variety. Ex J. Foreman, Sr., 1989-Stack's 1/93:1117-John Whitney, Stack's 5/4/99:1739.



192. 1796 S-104 R3+ VG7. LIHERTY Obverse. Glossy steel brown. Possibly recolored long ago but the color is attractive and looks natural. A few trivial contact marks, none notable or distracting. The date and legends are clear and the LIHERTY error is bold. EDS.

193. 1796 S-104 R3+ G4. LIHERTY Obverse. Several points sharper but the surfaces are covered with fine porosity, strongest on the obverse. A couple faint hairline scratches are blended into the patina on the obverse. Very dark steel. The date and legends are clear and LIHERTY error bold. MDS. The crack to 2nd T in STATES is clear.

CC LEVEL 1796 S-108



194. 1796 S-108 R4 VF25. Sharpness EF40 but the surfaces aren't perfectly smooth. The only marks are a hairline scratch or planchet fissure in the field before the neck and another in the field under the ribbon. Glossy very dark steel brown and olive. MDS. A sharp example of a variety that's difficult to find in high grade, this piece at the lower end of the condition census.



195. 1796 S-110 R3 VF25. Ten points sharper but there are traces of very light pitting on both sides. The obverse is mostly nice and smooth but there are some tiny pits in the field around LIBER and behind the head. The reverse pitting is microscopic but more widespread. The only reverse pits visible without a good glass are one over the D in UNITED and another close under the N in CENT. Just a couple minor contact marks including a faint scratch or long nick hidden in the hair over the ear and a rim nick over the E in STATES. There is some extra metal on the edge at F-A that may be a small rim cud, but it is definitely as struck. Nice glossy medium brown that gives this cent better eye appeal than the description might imply. MDS.



196. 1796 S-110 R3 F12+. Glossy steel brown and chocolate. The surfaces are smooth and the only marks are a few tiny voids or pits in the field near the dentils behind the portrait and a small rim bruise at the second T in STATES. MDS and slightly later than the preceding example. Ex Superior 2/8/98:890.

D5. A copy of Breen's Encyclopedia of Large Cents promised to be delivered to us in time for the sale and suitably inscribed EAC 2001 and signed by the editor, Mark Borckhardt. All proceeds go to EAC.

CC LEVEL 1796 S-111



197. 1796 S-111 R5- VF25. Sharpness at least EF40 but there are 8 small punchmarks on the obverse and 2 more on the reverse. Small nicks and bruises cover much of the rim on both sides, and there is a short scratch from the leaf under U down to the dentils left of the fraction. Glossy medium brown delicately mottled with frosty light brown and reddish chocolate. Sharply struck EDS, the fields smooth and slightly reflective. The marks are certainly a distraction, but the surfaces and details are outstanding, especially for a Draped Bust 1796. Near the lower end of the condition census for this tough variety.

198. 1796 S-114 R5 G4. Slightly sharper with fine granularity covering the planchet. There is an old scratch down through the B in LIBERTY, a dull nick near the dentils before the eye, and a few faint hairlines in the field before the neck. Slightly glossy dark olive with lighter brown highpoints. The date and legends are readable. EDS.

199. 1796 S-115 R3+ G5. A point or two sharper with a dozen small digs on both sides and rim nicks on the reverse, strongest at E in UNITED and ERI in AMERICA. Rather glossy olive brown with lighter brown highpoints. Minute porosity in the fields. The date and legends are clear. EDS, no crack through the date.



THIRD FINEST KNOWN 1796 S-115



200. 1796 S-115 R3+ VF30. Sharpness VF35 or slightly better with a rim nick left of the lower curls and a few minor fissures in the planchet in the field under the hair ribbon, as struck. Shallow planchet voids are in the field before the face, also as struck. Choice glossy medium brown and chocolate with a small splash of reddish brown toning at D-ST. E-MDS with a clear crack arcing through the date. The edge is partially gripped. A very attractive 1796 cent. CC#3 in the Bland census, tied for CC#3 in the Noyes list. Ex David Proskye-Henry C. Hines-Dr. William H. Sheldon 4/19/72-R.E. Naftzger, Jr., 2/23/92-Eric Streiner-John Whitney, Stack's 5/4/99-1751.

MINT STATE NICHOLS HOARD 1796 S-119



201. 1796 S-119 R3 MS60. Frosty light brown with steel brown toning on the highpoints and lustrous tan faded down from mint color in protected areas. There are the usual tiny planchet flaws that didn't completely strike out, including a small group of deeper ones in the hair left of the throat and a single small one at F-A. No spots or other defects. LDS with rim cuds at AT in STATES. Likely a piece from the Nichols Hoard of mint state Draped Bust cents.

202. 1797 S-120b R2 G5. Grippled Edge. A couple points sharper with minute porosity in the fields and a short, light scratch at the dentils left of L in LIBERTY. Slightly glossy dark steel and olive with lighter highpoints. MDS. The date is clear and legends readable.



203. 1797 S-125 R5 VG7. Slightly sharper with two short hairline scratches left of the lower curls and a very dull dent in the leaves under UN. Glossy dark olive and steel. LDS with heavy swelling and clashmarks on the obverse. The 7 is completely obliterated by the swelling and most of the 9 is also gone. The planchet has a curved clip affecting the dentils under the 97 and bust tip, as struck.



204. 1797 S-126 R3 F12. Slightly sharper with a few light rim bruises on the obverse, strongest at IB in LIBERTY. Nice glossy chocolate brown with lighter brown highpoints creating an attractive two-tone appearance. MDS.

205. 1797 S-128 R3- VG8, M over E. Sharpness F12 with a half dozen small rim bruises or nicks around the reverse and a planchet lamination running down the field left of the portrait, strongest at the top end. The obverse is a nice glossy medium brown and chocolate; the reverse is a darker chocolate brown. E-MDS. The area at TED STAT is weakly struck, but the M over E error is bold.



206. 1797 S-129 R6 G5. M over E. Several points sharper but the planchet is uniformly covered with very fine granularity. A couple thin, light nicks on the neck but no distracting marks on either side. The date and legends are all easily readable. Slightly glossy dark steel brown with lighter chocolate brown highpoints. EDS, the break at the dentils behind the head not present.



207. 1797 S-130 R2 VF20. Clipped Planchet. Glossy steel brown and chocolate. The planchet is smooth and attractive. There is a short, light scratch near the dentils right of the mouth, a tiny nick between the E & R in LIBERTY, and a rim nick at the left top of M in AMERICA. EDS. (The earliest state of this die is perfect and is used on S-129; see previous lot.) Minor planchet clips weaken the dentils at K-8 and K-10 on both sides, as struck. Ex Jack Robinson, Superior 1/29/89:255.



208. 1797 S-130 R2 VG8. Sharpness F15 with a rim bruise at IB in LIBERTY, a fissure in the planchet at the dentils over the second S in STATES, and traces of very fine porosity on both sides. Slightly glossy dark steel with chocolate brown highpoints. MDS with an incomplete cud break from the dentils behind the head, the upper portion of the cud not yet filled in. A rare intermediate stage of this break. The date and legends are clear.

**A CENT THAT BRUSHED UP!**



209. 1797 S-130 R2 VF30. Slightly sharper with a single nick at the left corner of the eye and a faint hairline scratch under the second A in AMERICA. Glossy chocolate brown mottled with some reddish brown and olive tones on both sides. LDS with strong die breaks and clasmarks. Ex 1992 EAC Sale, lot 69 (where graded VG10!)-unknown-2000 EAC Sale, lot 173.



210. 1797 S-134 R4 F15. The obverse is slightly sharper, the reverse a bit weaker, as usual for this variety. There are a few sharp nicks on the left bottom of the reverse; otherwise very nice for the grade. EDS, the reverse not yet cracked at E in AMERICA. The edge is partially gripped, as usual on this variety.

**CC LEVEL 1797 S-134  
EX. DR. FRENCH-DR. SHELDON-RE. NAFTZGER  
PENNYWISE PLATE COIN**



211. 1797 S-134 R4 VF35. Penny Whimsy Plate Coin. Five points sharper but nicely recolored glossy chocolate brown with some frosty tan and light brown in protected areas and a small spot of darker toning on the forelock. There is a shallow void in the planchet hidden in the lowest curl and a tiny dig under the F in OF. MDS with the cracks at E in AMERICA. The edge is partially gripped. An attractive cent. The reverse is plated in Penny Whimsy to show the later die state (VD). (Listed EF45 in Bland, EF40 in Noyes). Ex. Dr. George P. French, 3/21/29-B. Max Mehl FPL, 1929:153-H. A. Sternberg 8/30- James Clark-B. Max Mehl #106 6/45:1662-Sheraton Coin Co. 1945- Dr. William H. Sheldon 4/19/72-R.E. Naftzger Jr.-New Netherlands Coin Co. 11/73:450-Melvin L. Robinson-William Peterson (Cincinnati Coin Exchange).

PARTIALLY GRIPPED EDGE 1797 S-136

212. 1797 S-136 R3- VG10. Glossy chocolate and steel brown. There is a tiny spot of greenish verdigris close behind the head and another at the dentils over the first S in STATES. A few minor contact marks on both sides, none distracting. LDS with heavy swelling at ER in AMERICA. Partially gripped edge as often seen on this variety (added to the planchets in England). Ex Don Valenziano at 1999 EAC.

CC LEVEL 1797 S-138 EX. C. DOUGLAS SMITH

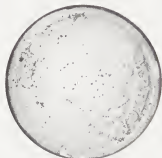


213. 1797 S-138 R1 AU55. Glossy light steel brown with golden tan in protected areas and four spots of reddish chocolate toning on the reverse, largest at ATE and under UN. Just a few trivial contact marks on both sides and some very light friction on the highpoints. MDS with obvious swelling at ES OF AM. Graded MS60 net AU50 and tied for CC#8 in the Noyes census, AU55 and tied for CC#6 in the Bland census. Ex R. McAusland 9/20/52-Willard C. Blaisdell-Gordon J. Wrubel-Worldwide Coin Investments, Ltd.-American Auction Association 2/74:859-Myles Z. Gerson 6/11/74-C. Douglas Smith-Dr. Robert A. Schuman.

214. 1798 S-145 R3 G5. Large 8, Style Hair. Slightly glossy medium brown, probably recolored. A very light hairline scratch on the second 8 and some minor roughness in the fields. LDS with swelling in the central portion of the reverse. The date and LIBERTY are strong.

215. 1798 S-146 R5 G6. Large 8, Style I Hair. Sharpness F12 but covered with uniform light to moderate granularity. No marks or verdigris. Excellent detail. MDS with the reverse rotated 75 degrees CCW.

216. 1798 S-148 R2 AG3. Large 8, Style I Hair. Sharpness VG7 but both sides have some moderate pitting. No notable contact marks. The date and legends are clear. Rather glossy light brown with darker chocolate and olive in protected areas. LDS, a very strong cud break over ERTY.



217. 1798 S-149 R5+ Fair-2. Large 8, Style I Hair. Recolored light steel brown with underlying golden light brown and tan. A couple small rim nicks on both sides. The date and LIBERTY are readable but most of the reverse is gone.

218. 1798/7 S-151 R3+ G5. Overdate 8 over 7. A bit sharper but slightly rough. Dark chocolate brown and olive with medium brown highpoints. The date is bold and overdate clear. No notable marks. M-LDS with extensive die cracks and swelling on the reverse.

219. 1798/7 S-152 R2+ G6. Overdate 8 over 7. Several points sharper with a few contact marks, strongest a dull nick right of the date, a rim bruise left of the hair ribbon, and dull rim nicks at UN and the first S in STATES. Slightly glossy medium brown. The date and legends are clear and the overdate is sharp. MDS.

220. 1798 S-155 R3 AG3. Style I Hair. Reverse of 1796. Off Center. Slightly sharper but minutely granular and cleaned, now dark steel brown with coppery tan highpoints. The date is clear and legends mostly readable. EDS. Struck 5% off center to K-10.



221. 1798 S-155 R3 VG10, Style I Hair. Reverse of 1796. Sharpness near VF20 but there are several hairline scratches on the portrait and the planchet has extremely fine granularity on both sides, strongest on the obverse. Somewhat glossy dark steel brown and olive with lighter brown highpoints. LDS. The date is bold and legends clear.



222. 1798 S-157 R2 F15+. Style I Hair. Sharpness VF25. There are a pair of faint hairline scratches in the field before the mouth and traces of microscopic granularity in the obverse fields, plus a dull nick close over the N in ONE. The obverse is glossy medium brown and chocolate mottled with darker reddish chocolate. The reverse is glossy light brown with some darker olive toning at AMER and a speck of greenish verdigris at the right foot of N in ONE. LDS.

223. 1798 S-157 R2 VG8. Style I Hair. Glossy medium brown, the reverse with chocolate in the protected areas. No significant marks, although there are a few small spots of darker olive toning on the obverse and dull rim bruises left of the lower curls and behind the head. LDS.

224. 1798 S-161 R2- AG3. Style I Hair. Glossy medium brown. Several light rim bumps on both sides and a few minor nicks consistent with the grade. The date is readable and most of the legend is clear. LDS with a strong cud break over ATES.



225. 1798 S-163 R4- VG8. Style I Hair. Sharpness F12 with a rim dent at the bust tip and a fine hairline scratch from the Y down to the shoulder. Nicely recolored glossy steel brown and chocolate that appears quite natural except for traces of faded red in the wreath under MERI. MDS, the crack at 17 clear and the area outlined by the crack just starting to sink. Ex Superior 2/8/98:936.

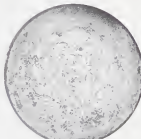
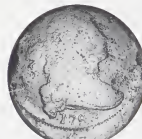


226. 1798 S-163 R4- VG7. Style I Hair. Sharpness F12 with a dull scrape on the shoulder, a rather large rim nick left of the date, and a half dozen small nicks in the field before the neck. Glossy dark olive and steel brown. Rare LDS with a sunken rotated cud break under the 17 extending to the left. The reverse is rotated 30 degrees CCW.

227. 1798 S-165 R4 VG8. Style I Hair. Glossy steel brown, chocolate brown in the protected areas. A few minor nicks, none notable. EDS without any clashmarks and the reverse uncracked.



228. 1798 S-165 R4 VF20. Style I Hair. Sharpness VF25+ with a couple very faint hairlines on the portrait and in the field at right, traces of microscopic roughness around the date, and a small rim bruise at U in UNITED. Otherwise very nice. Glossy steel brown and chocolate, the area around the date with a faint reddish brown tone. E-MDS with some sharp die clashmarks on both sides.



229. 1798 S-165 R4 AG3. Style I Hair. Grossly Misaligned Dies. A bit sharper with light to moderate porosity, strongest on the reverse. No notable marks. Slightly glossy dark chocolate and steel. The obverse is grossly misaligned about 15% off center to K-11, but the reverse is properly centered. I can't imagine one being more out of alignment than this piece. The date is easily legible but most everything else is weak or missing.



230. 1798 S-166 R1 VF20. Style II Hair. Glossy chocolate brown. A few light nicks on both sides, none notable, and a very light rim bruise at M. The planchet is smooth and problem-free. M-LDS, the reverse rotated 40 degrees CCW. An attractive cent for the grade. Comes with an ANACS photo-grading certificate as VF20/20.



231. 1798 S-169 R3 F12. Slightly sharper with traces of microscopic roughness on both sides but no marks or other distractions. Rather glossy very dark olive with medium brown highpoints. LDS. The edge is partially engrailed (diagonal reeding) under the date and bust tip.



232. 1798 S-170 R3 VF25. Sharpness EF40 with a couple patches of very light corrosion on the obverse, strongest on the bust tip. The reverse is minutely rough. No contact marks. The surfaces are glossy in spite of the minor roughness. Dark olive brown and chocolate with lighter steel brown highpoints on the obverse. EDS, the obverse uncracked. Called net VF25 and tied for CC#12 in the Noyes census, net VF35 and tied for CC#8 in the Bland list. Ex G. Wrubel.

233. 1798 S-171 R4+ G6. Slightly sharper but there are a few minor contact marks and a small fissure in the planchet at the rim off the bust tip. Glossy medium brown. LDS with a cud break left of L.

234. 1798 S-176 R4 VG7. Slightly sharper but there are too many tiny nicks scattered about both sides for the higher grade. None of these marks is notable or at all distracting. Glossy light to medium brown with steel brown toning on the highpoints. EDS.



235. 1798 S-176 R4 VG10. Glossy medium brown with darker chocolate brown in the protected areas. The only notable mark is a light rim bruise right of the Y in LIBERTY. The date and legends are bold. LDS with a clear vertical crack in the field before the face.

236. 1798 S-176 R4 VG8. Sharpness F12 or slightly better but minute porosity covers much of the planchet, strongest near the dentils right of the face. No verdigris or notable signs of contact. LDS.



237. 1798 S-178 R5+ G4. Reverse of 1796. The obverse is sharper, at least G6, while the reverse is weaker, as always on this variety. There are some light scratches blended into the patina on the bust, neck, and at the 8 in the date, and a couple traces of minor roughness can be found on both sides. Rather mottled mix of medium and chocolate browns. The date is bold and LIBERTY readable, but slightly less than half the reverse legend is visible. LDS, the obverse die cracks well advanced.



238. 1798 S-179 R3 VF35. Glossy olive brown and chocolate with frosty tan in protected areas. There is a light nick in the field under the chin and a smaller one just left of the F in ONE. MDS with a low spot blunting the face and neck and a few smaller low spots in the field before the portrait, as struck. Difficult to grade due to the die clog, but the rest of the coin is beautiful.

CC #8 1798 S-181



239. 1798 S-181 R3 VF35. The obverse is a mottled mix of medium and steel browns with traces of frosty light brown in protected areas and splashes of reddish brown at the lower curls and at LI. The reverse is a uniform glossy chocolate brown. Nearly free of contact marks, a tiny nick under the I in LIBERTY, one on the front edge of the neck, and another on the rim left of the hair ribbon. MDS, the reverse rotated 45 degrees CCW. Listed as VF35 and tied for CC#8 in the Bland census. Ex Gordon J. Wrubel 2/78-Dr. Allan S. Pirniquie-1981 EAC Sale, lot 164.

## The 2001 EAC Convention Sale, March 31, 2001

240. 1798 S-183 R5+ AG3. Sharpness G6 but the planchet is covered with fine granularity. Myriad fine scratches cover much of the obverse. Recolored a slightly glossy steel and light olive. The date is weak but readable and the legends are clear.



241. 1798 S-186 R2 F12. Sharpness VF25 but the planchet is minutely rough, strongest on the obverse. The roughness is so minor that the surfaces are glossy and attractive. A small nick well above the N in ONE and a smaller one under the U in UNITED are the only marks. Glossy dark steel brown and olive with lighter brown highpoints. E-MDS, a tough intermediate die state with a tiny cud on the dentils under the fraction not extending up towards the fraction. Ex Fred Hamon 6/11/94.

242. 1798 S-187 R1 G4. A couple points sharper with many light nicks scattered about both sides, plus strong rim nicks at the L & B in LIBERTY. Glossy chocolate brown with lighter steel brown highpoints. The date and legends are clear. Rare LDS with a strong cud break near the rim opposite the face and severe die failure at RICA.

1799/8 S-188



243. 1799/8 S-188 R4 VG10. Overdate 9 over 8. Sharpness F15 or a bit better but the surfaces are covered with uniform microscopic granularity. There are two dull nicks in the field over the lower curls and a faint hairline scratch blended into the patina running across the bottoms of the 179. Slightly glossy dark olive and steel. EDS. The date and overdate are strong and legends all clear. Struck very slightly off center to K-4.5 on the obverse, K-1 on the reverse. Not perfect but not bad for this very tough date. Ex Abner Kreisberg/Hans M.F. Schulman 3/65:257-unknown-Bowers & Ruddy FPL 1975-Bowers & Ruddy 2/76:1070-unknown-Superior 10/77:167-Robert L. Hughes Enterprises-George E. Ewing, Jr.-Del Bland-Dr. Willard C. Carmel, Jr.-G. Lee Kuntz, Superior 10/6/91:211-Tony Terranova.



244. 1799/8 S-188 R4 G5. Overdate 9 over 8. A couple points sharper, especially on the obverse, but there are many faint hairline scratches covering the obverse. There are dull, light rim bruises or nicks at R and Y in LIBERTY, AT in STATES, and RI in AMERICA, plus a small dig on the left wreath stem. Glossy medium brown and olive, the planchet free of any trace of roughness. The date is clear but the bottoms of the digits fade into the rim. ES-OF are weak but the remainder of the legend is clear. EDS. Ex Bowers & Merena 11/12/98:1075.

CHOICE 1799 S-189



245. 1799 S-189 R2+ G5. Glossy chocolate brown, the planchet smooth and free of any hint of corrosion. There are a few minor contact marks consistent with the grade on both sides, including a small nick in the field close over the bust and a pair of long nicks in the leaves under O & OF. The date is clear, although the bottoms of the digits blend into the rim below. The legends are legible, but D-STAT are very weak. MDS, the lump under E in ONE strong. Very nice for a low-grade 1799 cent.



246. 1799 S-189 R2+ Fair-2+. A few points sharper but uniformly granular. A nick near the dentils right of the nose is the only mark. The date is legible and the second 9 rather strong, but only about half the legend is visible. Recolored steel brown with some lighter highpoints on the reverse. M-LDS with strong dentil fusing at F-AM.

## The 2001 EAC Convention Sale, March 31, 2001

247. 1800/79 S-194 R3- VG10. Overdate 80 over 79. Five points sharper with too many small nicks on the obverse and minor roughness around LIBERTY. Glossy chocolate brown. M-LDS. The overdate is strong.

248. 1800/79 S-194 R3- G5. Overdate 80 over 79. Slightly sharper with microscopic porosity covering much of the obverse and a short hairline scratch over the bust. The date is clear and legends readable. Fairly glossy chocolate brown. M-LDS.



249. 1800 S-197 R1 VF25. The "Q" Variety. Sharpness VF35 or slightly better with many tiny nicks scattered about both sides, none notable but too many for the higher grade. There is a small rim bump left of the first S in STATES. Attractive glossy chocolate brown with frosty tan in protected areas. EDS. Ex Don Valenziano 7/26/89-Wes Rasmussen-1996 EAC Sale, lot 152.

### EQUAL CC #7 1800 S-199



250. 1800 S-199 R4 VF20. Slightly sharper with a pair of light rim bruises at the bust tip, two small rim nicks at RTY, and a small chip out of the rim left of the hair ribbon, probably as struck. Attractive glossy light olive brown and chocolate. E-MDS with the die crack at TED and strong die clashmarks at the dentils on both sides. The planchet is oversize at 29+ millimeters leaving a wide rim on the left sides. Tied for CC#7 in both census lists. Ex Allen E. McDowell-Jake Hendin-William R.T. Smith-1979 EAC Sale, lot 103-R.S. Brown, Jr., Superior 9/30/86-284-John Sype 4/91-James H. Goudge 6/91-Don Valenziano-1992 EAC Sale, lot 116.



251. 1800 S-201 R5 G5. A couple points sharper with minute porosity on much of the planchet, mostly on the reverse. There is a dull nick high on the shoulder and a couple hairline scratches on the upper right portion of the reverse. Fairly glossy dark steel with reddish brown in protected areas of the reverse. MDS.

252. 1800 S-203 R3- VG8. Glossy steel brown with darker olive brown in protected areas. The only notable defect is a thin, light nick on the cheek. The date and legends are clear. MDS. Nice for the grade.



253. 1800 S-205 R4 F12. Sharpness VF25 but the planchet is covered with uniform very fine granularity. No verdigris. There are a few light contact marks blended into the patina over the hair ribbon and a dull, light scratch over ENT. Slightly glossy olive brown. MDS.



254. 1800 S-206 R3+ F15. Sharper by at least 10 points but microscopic roughness covers most of the planchet. There is a small dig plus a few light pinscratches in the field before the chin and a tiny rim nick at 0 in OF. Fairly glossy dark live and steel with lighter steel brown highpoints. EDS.



255. 1800 S-209 R3 F15. Five points sharper with a very light rim bruise left of the lower curls and a few minor nicks scattered about the obverse, none notable. The reverse is free of marks, but there is some very light verdigris around NI in UNITED. Nicely recolored glossy steel brown with bluish steel overtones and a few small splashes of reddish chocolate on both sides. Scarce EDS without the usually seen clashmarks under the hair ribbon but with clashmarks of ERIC near the rim before the face.

D6. A copy of the Bill Noyes "Green Book" Cents 1793-1814, inscribed by the author, EAC 2001. All proceeds to the club.



256. 1800 S-212 R3- F12. Sharpness VF20 with a dull nick in the field before the face, a light rim bruise just above the bust tip, and rim bruises at IT in UNITED and O in OF. Glossy chocolate brown with lighter brown toning on the highpoints. E-MDS.



257. 1800 S-212 R3- VF20. Ten points sharper with a pit in the field left of the lower curls, a faint hairline scratch down in the left obverse field, and some extremely faint hairline scratches across the date and lowest curl. The planchet is mostly smooth but does show traces of microscopic roughness under magnification. Mostly glossy steel brown and chocolate mottled with some olive and reddish brown tones. LDS with the obverse cracks strong and die failure severely weakening the tops of ERTY. Ex Virgil Brand-MANA 1955-Dorothy Paschal-New Netherlands Coin Co. #50, lot 1154-Eugene Exman-unknown-1981 EAC Sale, lot 183 (where graded net VF30).



258. 1801 S-213 R3 VF30. Sharpness EF45 but burnished for some unknown reason, now recolored glossy chocolate and steel brown with frosty golden tan in protected areas. The only marks are an extremely tiny tick high on the bust, another over E in CENT, and a very light nick under the first S in STATES. LDS, the obverse die cracks strong (although weakened by the burnishing). Removed from an NGC slab graded MS61 Brown (and I'll resist making a comment here). Still an attractive cent.

RARE 1801 S-218



259. 1801 S-218 R6- G5. 3-Error Reverse. LIBERTY Right. A point or two sharper, especially on the hair details, but there is an "R" very lightly scratched into the left obverse field and a "B" in the right obverse field, plus a few minor rim bruises around both sides, strongest at the hair ribbon and ER in AMERICA. Nice glossy chocolate brown. The date is clear and legends legible, although LIBE and CA are weak. EDS. The 3 reverse die cutter errors are clear. Called net G5 in both census lists. Noyes photo #24009. Ex Dr. Charles L. Ruby-Superior 2/75:203-C.F. Gordon, Jr. 8/79-G. Lee Kuntz, Superior 10/6/91:240.

260. 1801 S-221 R2 VG10. Corrected Fraction 100/000. Glossy chocolate brown and steel with lighter steel brown highpoints. There is a dull scuff under the F in OF, another over NE in one, and a third on the numerator. The denominator is visible but the correction is faint due to the grade and die state. LDS with a cud break at TA in STATES. Ex U.S. Cents MBS 2/12/99:56.



261. 1802 S-226 R3 VF25. Slightly sharper but nicely recolored glossy medium brown. There is a small nick close over the bust and a pair of tiny rim nicks right of the bust tip. MDS.

262. 1802 S-227 R3- VG8. Sharpness VF20 but the planchet is covered with uniform very fine granularity. Rather glossy dark steel brown and olive. A dull nick hidden in the hair is the only mark. MDS.



263. 1802 S-230 R1 VF25. Slightly sharper with microscopic roughness, like extremely fine sandpaper, on the highest points of the obverse. Otherwise the only marks are a couple light nicks and a short hairline scratch over the bust. Nicely recolored glossy chocolate brown with lighter steel brown highpoints. Rare EDS with both dies uncracked. A sharp, attractive cent in spite of the minor defects.



## The 2001 EAC Convention Sale, March 31, 2001



264. 1802 S-232 R1 VF20. Ten points sharper with some light contact marks on both sides, including a few hairline scratches on the shoulder, a small rim bump left of the hair ribbon, faint horizontal hairline scratches over ONE, and a flake out of the planchet at D in UNITED, as struck. Glossy chocolate brown, the highpoints a bit lighter. MDS.

265. 1802 S-230 R1 F12. Sharpness EF40 but dark and uniformly granular. Slightly glossy very dark olive and steel. No verdigris or notable marks. MDS. Ex John Ashby.



271. 1802 S-237 R2 F15. Five points sharper with a few light nicks on the obverse, none serious but too many to ignore, plus a dull rim nick under the 8. Recolored glossy dark steel brown and chocolate. LDS.

272. 1802 S-238 R4 VG10. Sharpness VF20 with very fine porosity covering the planchet. Recolored mostly glossy steel brown. M-LDS.



273. 1802 S-239 R3 VF20. Slightly sharper with a few light contact marks on both sides, including a thin nick left of the hair ribbon and a small, light rim bruise under the right end of the wreath ribbon. Glossy medium brown. LDS, the cracks in the field before the face strong and the field between them raised.

274. 1802 S-239 R3 AG3+. Sharpness G6 but the planchet is covered with fine granularity. Slightly glossy dark chocolate and steel. The date is clear. LDS, the obverse cracks strong.

275. 1802 S-240 R3+ G4. Glossy dark chocolate brown. A few light rim bruises on both sides, strongest at TED. The date is clear. LDS, the crack up from the bust bold.



276. 1802 S-241 R1 F15+. Stemless Wreath, Double Fraction Bar. Sharpness VF25 with a small rim bruise under the 2 in the date and a half dozen others scattered about the reverse, strongest at STATES. Nice glossy steel brown and chocolate. E-MDS.

### CHOICE 1802 S-231



266. 1802 S-231 R1 EF40. Stemless Wreath. Glossy chocolate brown with steel brown highpoints and a small splash of darker olive toning under the hair ribbon. A few tiny rim nicks on the reverse, strongest at F-A. MDS. An attractive example of this error reverse variety.

267. 1802 S-231 R1 VG10. Stemless Wreath. Sharpness VF20 but there is a hairline scratch up from the bust tip, a rather large pit mark at the rim opposite the chin, and a half dozen small pits on the reverse, strongest at T in CENT. Dark chocolate and olive, the highpoints a lighter shade of brown. MDS. Ex Empire Coin Co. 1964.

268. 1802 S-231 R1 F12. Stemless Wreath. Nice glossy medium brown and chocolate. No notable defects. LDS.



269. 1802 S232 R1 VF25. Glossy steel brown with lighter reddish brown in protected areas. The only notable marks are a dull nick on the shoulder and a small spot of greenish verdigris at the right top of F in OF.



277. 1802 S-241 R1 VF25. Stemless Wreath, Double Fraction Bar. Sharpness EF-40 but recolored frosty light steel brown with some chocolate in protected areas. The planchet is reasonably smooth, but it does show some extremely fine granularity under strong magnification. No contact marks of note. MDS, the clashmarks near the dentils before the portrait are strong.



278. 1802 S-241 R1 VF20. Stemless Wreath, Double Fraction Bar. Glossy steel brown and chocolate. A few trivial signs of light contact, strongest a barely visible rim bruise at A in STATES. MDS.



279. 1803 S-244 R4 PCGS graded VF20. Double Profile. Glossy medium brown and chocolate. The sharpness is consistent with the slab grade, but there are many small nicks scattered about the obverse, including a thin horizontal one at the left corner of the eye. MDS. A fine but sharp double profile shows on the lips, from the chin to the throat, along the bottom edge of the bust, and on the 3 in the date. EAC graded net F12.



280. 1803 S-246 R3 F15. Choice glossy chocolate brown. Nearly flawless, a couple light nicks in the field before the nose and a barely visible rim bruise under the left ribbon end. EDS, before the "Mumps" break. Ex Lillian Willins via Bill Noyes 1/11/92.



281. 1803 S-246 R3 F12. Mumps Obverse. Slightly sharper with some light contact marks on the obverse, mostly in the right obverse field, and a few rim nicks on the reverse, strongest at D in UNITED. Glossy chocolate brown. LDS with a strong cud break at STA.

1803 S-247 MUMPS OBVERSE



282. 1803 S-247 R3 EF45. Mumps Obverse. Glossy chocolate brown with lustrous steel brown in protected areas. A couple tiny nicks on the neck, otherwise nearly choice. Sharply struck MDS, both sides with crisp die clashmarks. A nice cent.

## The 2001 EAC Convention Sale, March 31, 2001



283. 1803 S-247 R3 VF20. Mumps Obverse. Ten points sharper with several small spots of greenish verdigris on the obverse, strongest on the lower curls, and a few traces of similar verdigris on the reverse. Otherwise the planchet is smooth and problem free. Glossy chocolate brown with lighter steel brown on the highpoints. Rare EDS with up-lashed dies.



284. 1803 S-249 R2 G5+. Corrected Fraction 100 over 000. Slightly sharper with very minor roughness on both sides but no notable marks. Fairly glossy dark olive in protected areas and lighter steel brown on the highpoints. Rare LDS with a strong cud break at the bust tip and another at RIC. Ex Bowers & Merena 6/22/2000:146.

### CHOICE 1803 S-250



285. 1803 S-250 R3 VF35. Glossy chocolate brown with lots of frosty golden tan in protected areas, especially on the reverse. Very attractive and nearly perfect for the grade. The only defect is a small struck-through or planchet void in the field right of the second S in STATES, as struck. LDS. Ex Tom Reynolds 5/8/92.

286. 1803 S-253 R2 VG7. Sharpness F12 but the surfaces are minutely rough and there is a speck or two of light verdigris on each side. A light rim bruise left of the L and a dull rim nick over R in LIBERTY are the only marks worthy of note. Slightly glossy dark olive. MDS.

### RARE LATE DIE STATE 1803 S-253



287. 1803 S-253 R2 VF20. Five points sharper with minor verdigris at STATE and in the leaves below plus a barely visible rim bruise under the bust. Glossy dark olive brown. Rare LDS with a cud break joining 180 to the rim with an extension left under the curl. In addition, there is a very tiny curved clip in the planchet under the 1 in the date.



288. 1803 S-254 R2 VF20+. Close to VF25 with some light contact marks scattered about the obverse, including two very faint hairline scratches at the tip of the nose. Glossy chocolate brown with frosty bluish steel brown toning in protected areas. Sharply struck EDS.

289. 1803 S-256 R3 G4. Slightly sharper with very fine porosity on both sides and a dull rim nick left of the hair ribbon. The date is clear and legends readable. Slightly glossy dark chocolate and steel brown. MDS.

290. 1803 S-258 R1 F15. Small Date, Large Fraction. Sharpness VF30 but the surfaces are matte due to extremely fine granularity and there is a flat spot or shallow void on the dentils right of the chin. Otherwise free of defects. Very dark steel. LDS.

SUPERB 1803 S-258 CC#5



291. 1803 S-258 R1 AU55. Small Date, Large Fraction. Choice lustrous golden tan with steel brown toning on the highpoints. Just a touch of light friction on the highest points. The best identification marks are a tiny nick high on the neck and a speck of darker toning (not carbon) just right of the 3 in the date. MDS. A very attractive date or type coin. MDS, the arc crack in the field under the hair ribbon weak but visible. Listed as MS60 and tied for CC#5 in the Noyes census, his photo #21459. Ex Jerry A. Bobbe 8/86-R.E. Naftzger, Jr.-1989 EAC Sale, lot 147 (as MS63).



292. 1803 S-259 R4 F12. Small Date, Large Fraction. Slightly sharper with a few light nicks on the obverse, none notable, and a pair of small rim nicks at D in UNITED. Glossy dark olive and steel. MDS, a light crack through the top of STATE. Ex Stuart MacDonald, Heritage 9/11/97:5164.

RARE LDS 1803 S-259

293. 1803 S-259 R4 G4. Small Date, Large Fraction. Sharpness VG7 but covered with uniform very fine granularity. No marks or verdigris. Slightly glossy dark steel. Rare LDS with a sunken retained cud break over TAT.



294. 1803 S-260 R1 VF25. Small Date, Large Fraction. Slightly sharper with traces of extremely fine granularity in protected areas, a faint hairline scratch under the bust tip, and a shallow low spot, as struck, at the left end of the hair ribbon. Glossy dark olive with chocolate brown highpoints. An attractive cent in spite of the minor defects. EDS.



295. 1803 S-261 R2+ VF35. Small Date, Large Fraction. Glossy olive brown and chocolate mottled with some lighter brown shades on the obverse and reddish chocolate on the reverse. A small rim nick opposite the chin. EDS, the obverse die uncracked.



296. 1803 S-261 R2+ VF20. Small Date. Large Fraction. Glossy steel brown and chocolate with a small spot of darker olive toning on the bottom of the neck and a couple smaller ones in the field under the hair ribbon. A short, very dull scratch over NT in CENT is the only contact mark. LDS showing a strong arc crack on the lower left of the obverse similar to the 1804 "Restrikes" made from this die.



297. 1803 S-262 R3 VG10. Glossy chocolate brown and olive with lighter brown highpoints and some reddish chocolate in protected areas of the reverse. A few light nicks on the obverse, mostly in the right field, plus a sharp nick on the B in LIBERTY. EDS. Ex Robison, Stack's 2/82:432-Joe Rose 10/15/82-Evan Kopald-1991 EAC Sale, lot 98-R.S. Brown, Jr., McCawley & Grellman Auctions, Inc., 1/8/94:224.



298. 1803 S-262 R3 VG10. Sharpness F15 with extremely fine granularity covering the planchet and a pair of short hairline scratches high on the neck. Otherwise mark-free. Slightly glossy very dark chocolate and olive. EDS.

299. 1803 S-263 R3 G5. A bit sharper with minute roughness in the obverse fields and a dull rim bruise at RT in LIBERTY. Glossy medium brown and chocolate. LDS with a cud break under the date and a strong crack through the left top of the wreath.

300. 1804 S-266c R2 AG3. Glossy chocolate brown. There are a few nicks on both sides and a dull scrape on the top of E in CENT. The surfaces are smooth and the planchet is nice for the grade, but the date area is covered with extremely faint hairlines that appear to have been a result of someone "thumbing" that area to bring out the numerals. The top half of the digits are visible but not strong. LIBERTY and about two thirds of the reverse remain clear. The cud breaks are bold (LDS, state c).



301. 1805 S-267 R1 EF40. Five points sharper but there is a narrow fissure in the planchet running from the rim at the lowest curl nearly up to the hair ribbon with a corresponding fissure down through TA in STATES fading out at the wreath. Otherwise relatively free of marks, just a couple trivial ticks of no real consequence. Glossy speckled mixture of browns ranging from golden tan to dark chocolate and olive. MDS with some bluntness on the cheek and upper neck caused by crud on the die, and the bust tip is softly struck.

302. 1805 S-267 R1 NGC graded AU58 Brown. Steel brown and chocolate with some light reddish brown tones in protected areas of the reverse. A short, light hairline scratch hidden in the hair left of the neck is the only mark, and it is difficult to see. M-LDS. The surfaces are a bit dull from accumulated oxidation. Needs a good brushing to bring back the natural luster and eye appeal. EAC graded EF40.



303. 1805 S-269 R1 NGC graded EF45. Pointed 1. Glossy chocolate brown. The planchet is smooth and attractive. The only marks are a dull nick over the hair ribbon and a barely visible rim bruise under the 8 in the date. MDS. EAC graded VF25. Ex John J. Pittman, David Akers Numismatics, Inc., 10/21/97:179. The attribution and pedigree are noted on the NGC label.



304. 1806 S-270 R1 VF25. Glossy dark chocolate brown and olive with medium brown highpoints. Single light nick in the field left of the lower hair ribbon; otherwise flawless. Just a bit too dark to be a choice cent. M-LDS with clear rim cuds at AT and ES in STATES.

## The 2001 EAC Convention Sale, March 31, 2001

### 1807 S-272 SMALL SEVEN OVER SIX



305. 1807/6 S-272 R4+ G6. Overdate Small 7 over 6. A point or two sharper with a dozen small pits of greenish corrosion on the reverse, strongest under the first A in AMERICA and on the N in CENT. The obverse is free of pits but there are some light nicks scattered about, strongest a dull one on the shoulder. Slightly glossy medium brown and steel, possibly recolored. The date and overdate are very bold and the legends are strong. Not perfect but not too bad for this popular variety, one of Sheldon's "Famous Four."



306. 1807/6 S-272 R4+ AG3. Overdate Small 7 over 6. Sharpness VG10 but moderately corroded with obvious pitting covering the right half of the obverse and minor traces of greenish verdigris in protected areas of the reverse. No contact marks. The attribution is certain but the overdate is weak due to roughness on the 7/6. Medium brown and olive.

307. 1807/6 S-273 R1 F15. Overdate Large 7 over 6. Slightly glossy steel brown, possibly recolored. There is a swipe of very faint granularity across the face and microscopic traces of verdigris at the fraction and UN, plus a spot of dark olive toning at the rim right of the chin. LDS.



308. 1807/6 S-273 R1 VF20. Overdate Large 7 over 6. Sharpness VF30 with traces of microscopic roughness on both sides, strongest at the throat and wreath ribbon. A couple faint scratches at the 7/6 and a few more at F-A are the only marks. Mottled chocolate and dark olive brown. M-LDS.

### CHOICE 1807 S-275



309. 1807 S-275 R3 VF25. Large Fraction. Nice glossy chocolate brown with medium brown toning on the highpoints. Nearly free of marks. A small, very light nick in the field left of the lowest curl is about all that's worth mentioning, and it's a stretch. MDS. A very nice example for the grade. At the lower end of the expanded condition census.

## The 2001 EAC Convention Sale, March 31, 2001



310. 1808 S-277 R2 VG8. Misaligned Obverse. Glossy medium brown and chocolate. A few minor nicks on both sides and a small punchmark in the field under star 6. The planchet is smooth, free of any corrosion or verdigris. LDS with a small internal cud break in the D of UNITED. The obverse is slightly misaligned about 5% to K-8 while the reverse is properly centered on the planchet.



311. 1809 S-280 R2 PCGS graded VF35. Glossy chocolate brown. Smooth and nearly flawless. A barely visible rim bruise at star 4 is the only defect. A nice Turban Head cent for the grade. M-LDS. EAC graded VF20.



312. 1809 S-280 R2 F12. Slightly sharper with a few curved hairline scratches on the bust reaching the lower curls. Otherwise very nice, nearly choice. Glossy dark chocolate brown and olive with lighter chocolate brown toning on the highpoints. The planchet is smooth, perfectly free of any roughness. MDS.

313. 1809 S-280 R2 VG8. Sharpness F12 with some nicks on the obverse and microscopic roughness on both sides. No verdigris or distracting marks. Slightly glossy dark steel and olive. MDS.



SHARP 1810/09 S-281

314. 1810/09 S-281 R1 EF40. Overdate 10 over 09. Glossy chocolate brown, the reverse delicately mottled with some reddish brown and darker shades of chocolate. The only marks are a long, thin nick over star 12 and a very faint hairline scratch over NE in Turban. Nicely struck E-MDS, the overdate clear. An attractive Turban Head cent.

315. 1810/09 S-281 R1 F12. Overdate 10 over 09. Sharpness VF20 with minute granularity covering the planchet. A few light nicks on the left side of the obverse, plus a dull nick on the base of EN in CENT. Slightly glossy dark olive. MDS, the overdate clear.



316. 1810 S-282 R2 VF20. Slightly sharper with a dull, light rim bump at the bust tip and a faint hairline scratch in the left obverse field. Glossy chocolate brown. The planchet is nice and smooth. EDS.

317. 1811 S-287 R2 VG8. Glossy dark chocolate brown with lighter steel brown highpoints creating an attractive two-tone appearance. There is a light nick under the left foot of the last digit in the date and traces of very minor roughness around the stars behind the head. MDS.



318. 1812 S-288 R2 VF30+. Glossy steel brown and chocolate with frosty luster in protected areas. No distracting marks or other defects, just a few microscopic signs of very light contact, including a faint hairline from the chin to star 4 and two more in the field over the head. E-MDS. A very nice Turban Head cent for the grade.

319. 1812 S-288 R2 F12. Slightly sharper with a dull, curved scratch from the E in LIBERTY to the top of the head. Otherwise the surfaces are smooth and problem-free. Glossy steel brown and chocolate. LDS.



320. 1812 S-289 R1 VF25. Glossy dark chocolate brown mottled with lighter shades of chocolate and a few tiny splashes of darker olive on the obverse. No notable marks. The planchet is smooth and free of any hint of corrosion. Struck slightly off center to K-1.5 on the obverse, K-4.5 on the reverse. EDS.

321. 1812 S-289 R1 VG8. Glossy medium brown and chocolate with splashes of darker olive on both sides and some reddish brown on the reverse. A few dull rim nicks on the reverse, none notable. M-LDS.

LUSTROUS 1812 S-290



322. 1812 S-290 R1 AU50. Glossy light brown with golden tan in protected areas and steel brown toning on the highpoints. There is a swipe of darker olive brown toning from the bust to star 12, and traces of microscopic crud can be found in the darker area. A similar area is on the wreath under C in CENT. The only contact marks are a faint hairline scratch at D-S and a tiny tick under the right side of N in ONE. EDS with four sets of sharp die clashmarks on both sides, clearest from the O in ONE to the C in CENT. Removed from a PCCGS slab graded MS62 Brown. A sharp, attractive Turban Head cent. Ex Doug Bird.



323. 1813 S-292 R2 F15. Sharpness VF25 with a lightly smoothed spot over the second 1 in the date, a very light rim bruise at star 12, small rim bruises at the top and bottom of the reverse, and a sharp rim cut over the left side of E in AMERICA. Recolored glossy dark chocolate brown with steel brown toning on the highpoints. The planchet is smooth. MDS. Decent eye appeal in spite of the defects.



324. 1814 S-294 R1 VF30. Off Center. Sharpness EF40 or slightly better but there are areas of microscopic porosity on both sides. A dull nick on the unstruck portion of the planchet over star 8 is the only notable mark. Slightly glossy dark olive and steel. MDS. Struck 20% off center to K-7, which left the date completely off the planchet. Not perfect but a really neat mint error with decent eye appeal in spite of the defects. Ex Denis Loring 4/72.

325. 1814 S-295 R1 VG8. Slightly sharper with a few light nicks on both sides, none notable. Nice glossy chocolate brown. E-MDS, the obverse die crack faint and no crumbling on the profile.



326. "1815" (1813 S-293 with altered date) VF20. Glossy dark chocolate brown with reddish brown toning in protected areas. There is a dull rim nick at the top of the obverse and a couple dull nicks at the base of the in ONE. The workmanship left some fine toolmarks around the date. The grade of VF20 represents the sharpness; a net is not very meaningful in this case.

Presentation Copy of the J.R. Frankfield Sale

D7. 1 of 4 presentation copies of the J.R. Frankfield Sale. A total of 5 leather bound presentation copies of the J.R. Frankfield Sale have been prepared by Superior Galleries. 1 in special format for Mr. Frankfield, 4 in slip case boxes for presentation. 1 copy has been reserved as a donation to EAC. It will be sold to the highest bidder with all proceeds going to the club.



PARTIALLY REEDED EDGE 1816 N-6



327. 1816 N-6 R2 EF40. Glossy light olive brown with some frosty golden light brown undertones, possibly from an old recoloring. A tiny nick under the fold of the wreath ribbon. Nicely struck EDS. The edge is partially reeded from star 4 to star 6.

CHOICE 1816 N-6 LDS



328. 1816 N-6 R2 AU55. Frosty steel brown with lustrous light brown and tan in protected areas. A very light nick under the chin and two more over the E in CENT. LDS.

329. 1816 N-8 R3 VF25. Five to ten points sharper but recolored glossy chocolate and steel brown. A tiny nick on the jawline. MDS with rim cuds at \*9-\*10 and \*11-\*12.

PERFECT REVERSE DIE 1817 N-2



330. 1817 N-2 R3 VF20. Perfect Reverse Die. Ten points sharper with some light contact marks scattered about the obverse, none distracting, plus a light rim bruise at CA in AMERICA. Nicely recolored glossy steel brown and reddish chocolate. Rare EDS with both dies uncracked (a crack is nearly always present through the first S in STATES).

331. 1817 N-2 R3 VF20. Ten points sharper with too many light nicks on the obverse, plus a larger one on the neck. Glossy dark chocolate with a splash of reddish chocolate brown toning on the face. LDS, the die cracks clear.



332. 1817 N-4 R3 VF25. Reverse Brockage. Slightly sharper with a small rim nick at F-A and several tiny, dull nicks around ONE CENT on the brockage side. Nice glossy chocolate brown. An attractive, sharply impressed brockage error. Ex Numismatics, Ltd., 4/79.

1817 N-6 C. DOUGLAS SMITH-TED NAFTZGER



333. 1817 N-6 R1 AU58. Choice lustrous steel brown delicately mottled with some slightly darker tones of steel on both sides. There are traces of very faded mint red on the reverse. The only marks are a light nick in the hair over B in LIBERTY and a faint hairline from star 12 to the main curl. The barest trace of rub on the highest points away from mint state. Nicely struck E-MDS with excellent eye appeal. Removed from an ANACS slab graded MS62 Brown. Ex C. Douglas Smith 1987-Herman Halpern, Stack's 3/16/88:313-R.E. Naftzger, Jr. 1990 EAC Sale, lot 82.



334. 1817 N-6 R1 AU55. Nice frosty steel brown. No spots or other defects. Just a bit of light friction on the highest points. E-MDS. Ex Vernon W. Lowe-Del Bland 8/79-Bob Vail. Superior 9/7/97:368-unknown-2000 EAC Sale, lot 288.



338. 1817 N-11 R1 AU55. Lustrous steel brown with hints of bluish steel overtone. No marks or other defects, just a bit of very light rub on the highest points. MDS. An attractive, problem-free cent. Ex Tom Reynolds-Denis Loring-R.S. Brown, Jr. Superior 1/27/96:426.



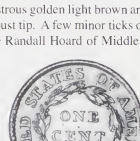
335. 1817 N-7 R3+ VF25. Mouse Top. Sharpness EF40 but the surfaces are matte rather than glossy due to extremely fine granularity. A light nick on the jawline is the only notable mark. Frosty dark chocolate brown with some lighter brown in protected areas. LDS, a strong "Mouse" break on top of the head. Removed from a PCGS slab graded EF40.



339. 1817 N-13 R1 AU50. Slightly sharper with some very minor crud near the dentils at stars 2-4 and a dull nick on the front edge of the nose. Frosty light steel brown mottled with darker steel brown on both sides and traces of golden tan faded down from mint color in the protected areas. E-MDS. Most likely a Randall Hoard cent.



336. 1817 N-8 R2 EF45. Mouse Top. Sharpness AU50 or slightly better with a small rim bruise at star 6 and another at star 11, plus a tiny rim nick at the first T in STATES. Lustrous steel brown mottled with darker olive and some lighter brown. LDS with the full "Mouse" break on top of the head under star 8. Nice eye appeal in spite of the minor defects. Ex Bowers & Merena 11/18/94:340-Superior 6/1/98:160.



340. 1817 N-14 R1 AU55. Lustrous golden light brown and tan with a splash of lighter toning on the bust tip. A few minor ticks on the cheek. M-LDS, most likely from the Randall Hoard of Middle Date cents.

341. 1817 N-15 R4- VF30. Glossy medium brown and darker chocolate. A very tiny rim nick at star 3 and another at star 5. MDS.

**SHARP 15 STAR OBERVERSE 1817 N-16**



337. 1817 N-9 R2 EF45. Frosty light steel brown with lustrous golden light brown and tan in protected areas. There is a small spot of dark toning on the curl behind the neck, a very light scratch between stars 6 & 7, and a tiny nick over the right top of N in ONE. E-MDS, before the Mouse break on top of the head.



342. 1817 N-16 R1 EF45. Fifteen Star Obverse. Slightly sharper with a few small, dull nicks on the jawline and a small patch of very light roughness over EN in CENT. Glossy light olive brown with traces of faded mint red in protected areas of the obverse. There are a few small splashes of darker olive toning on the reverse, strongest at the rough area over EN. MDS.

FABULOUS 30 STAR BROCKAGE



343. 1817 N-16 R1 F12. Fifteen Star Obverse. Obverse Brockage (30-star obverse?). Glossy chocolate brown. Very nice for the grade, nearly choice. EDS. Obverse brockage with both sides sharply impressed. A great mint error in terms of eye appeal and the special 30-star feature. Ex Denis Loring 4/72.

CC LEVEL 1817 N-17



344. 1817 N-17 R4 VF25. Slightly sharper with a few very faint hairlines on the cheek and some minor nicks elsewhere on the obverse, none notable. Glossy light to medium brown speckled with some very tiny splashes of darker olive on both sides. MDS, the right top of the first T in STATES raised toward the rim. Ex Jeff Gresser-Chris McCawley. Noyes photo #28046.

LUSTROUS 1818 N-1



345. 1818 N-1 R2+ AU50. Glossy steel brown with lustrous lighter steel brown in the protected areas. The only defect is a dull nick under the O in ONE. Otherwise nearly choice. MDS with the reverse rotated 60 degrees CCW.

346. 1818 N-2 R4+ G6. A bit sharper with traces of very light verdigris in a few protected areas. No notable marks. Slightly glossy dark olive fields and medium brown highpoints. LDS with a cud break over NITED to near the S in STATES, although the right end of the cud is not fully raised.



347. 1818 N-4 R4+ G5. Somewhat glossy dark olive fields and lighter steel brown highpoints. A dull rim nick over O in OF and another at the E in STATES, neither distracting at all. LDS with heavy swelling on the obverse obliterating the chin and front edge of the neck. The date and legends are clear.



348. 1818 N-6 R1 EF45+. Double Profile. Glossy light brown with darker chocolate on the right side of the obverse. A few very tiny nicks on the obverse, none at all distracting. Rare EDS, the fields smooth and the reverse die crack light. There is a double profile on the forehead and tip of the nose down to the throat, plus sharp doubling on stars 2-6. Ex B. Max Mehl 1/27/42:916 (BMM auction envelope included)-unknown-Auction '80 (Stack's 8/15/80:1045)-Stack's 5/1/81:711-unknown-Tom Reynolds.

349. 1818 N-7 R1 VF30. Doubled Ear. Slightly sharper with a few too many light contact marks for the higher grade and a small spot of reddish verdigris at the bottom of the inner bun. Glossy light brown with some small spots or splashes of darker olive brown on both sides, especially the reverse. EDS. The back edge of the ear is strongly doubled and lighter doubling is also visible on much of the reverse.

## The 2001 EAC Convention Sale, March 31, 2001

350. 1818 N-8 R3 VF20. Ten points sharper with microscopic roughness covering the obverse. Still a rather glossy medium brown and chocolate. No marks. An attractive cent in spite of the minor roughness. EDS, no dentil fusing or cuds on the upper obverse. Ex U.S. Cents MBS 2/12/99:112.

351. 1818 N-8 R3 VF25. Glossy chocolate brown with frosty lighter brown in protected areas of the obverse. No notable marks or other defects. M-LDS with several small rim cuds on the upper obverse, strongest at star 5.

### Triple profile 1819/8 N-1 Ex. Naftzger



352. 1819/8 N-1 R1+ EF45. Overdate 9 over 8. Triple Profile. Glossy tan and light steel brown with darker steel brown toning on the obverse highpoints and a bit of reddish brown toning at stars 2-4. A few minor ticks consistent with the grade. MDS with a triple profile from the forehead down to the chin. Ex Lahrman, A. Kosoff 2/1/63:303-R.E. Naftzger, Jr., 1989 EAC Sale, lot 215.

### CHOICE MINT STATE RED AND BROWN 1819 N-2



353. 1819 N-2 R1 MS62. Large Date. Choice lustrous light steel brown with lots of faded mint red in protected areas, mostly on the obverse. No spots and just a few microscopic signs of mixing with other coins away from a higher grade. MDS. A very attractive example. Ex Superior 1/29/89:3120.



354. 1819 N-4 R3 VF25. Glossy dark chocolate brown and olive with lighter chocolate toning on the obverse highpoints. A very tiny nick on the cheek and a dull mark on the rim at F in OF. LDS.



355. 1819 N-9 R1 VF25. Sharpness near VF35 but nicely recolored glossy chocolate brown with traces of reddish tan in a few protected areas of the obverse. There are a couple minor nicks on the neck and cheek, plus a light hairline scratch over ON in ONE and a small nick over that N. Sharply struck EDS.



356. 1819 N-9 R1 MS62. Lustrous light steel brown with 15% of the original mint red remaining, although it has faded down a bit. There are a couple trivial rim nicks at star 7 and a speck of darker toning on the peak of the second 1. LDS. Ex Superior 9/7/97:934-March Wells, Superior 2/7/2000:1806.

357. 1819 N-10 R4 VF20. Sharpness VF30 but recolored glossy steel brown and chocolate with lighter brown highpoints on the obverse. A tiny planchet flake at the dentils left of the date and a very light tick in the field right of star 3; otherwise free of marks. Needs a better recoloring. MDS.

### RARE DOUBLE PROFILE 1820/19 N-2 EX. BOLENDER-BLAISDELL-NAFTZGER



358. 1820/19 N-2 R2 VF20. Double Profile. Sharpness EF40 with many contact marks on both sides, including a hairline scratch on the mouth, a small rim dent at star 1, and a rim nick at I in AMERICA. Glossy dark chocolate brown. E-MDS, the overdate clear. There is a strong double profile from the forehead down to the chin. Ex Bolender 9/8/51:328-Willard C. Blaisdell 9/76-R.E. Naftzger, Jr., 1990 EAC Sale, lot 101.

SHARP 1820 N-4



339. 1820 N-4 R4 EF45. Small Date. Frosty steel brown and chocolate with lustrous lighter steel brown toning in protected areas. A tiny nick on the cheek and an even smaller one on the chin, plus a few other microscopic signs of contact on both sides. Sharp EDS. Ex Joe Dooley, McCawley & Grellman Auctions, Inc., 1/11/97:303.

360. 1820 N-6 R4 F12. Sharpness VF25 or better but dark and covered with fine porosity. A couple tiny nicks on the cheek, otherwise free of marks. No verdigris or notable pits. Dark olive and steel with lighter brown highpoints. EDS.

361. 1820 N-7 R2 F15. Small Date. Sharpness VF35 with light pitting around the 820 and stars 12-13. The rest of the obverse is smooth and glossy but most of the reverse is covered with very fine granularity. Mostly glossy chocolate brown. No marks or verdigris. M-LDS. Looks nicer than the grade and description might imply.



362. 1820 N-10 R2 AU55. Large Date. Lustrous light steel brown, the reverse a couple shades lighter than the obverse. There are traces of faded mint red on both sides, especially on the reverse. There is a faint dusting of carbon in the field under star 3 and a small struck-through void in the field just left of the O in ONE. Nicely struck MDS, just a touch of very light friction away from mint state.

363. 1820 N-10 R2 VF25. Large Date. Slightly sharper with a small scuff on the right side of star 11 and a dull, light scratch under the wreath stem. Glossy olive brown and chocolate. LDS. Ex Russell Wyatt, Superior 9/30/85:440.

364. 1820 N-13 R1 MS60+. Large Date. Frosty light steel brown and tan. The surfaces are lustrous and attractive. There are some extremely tiny ticks in the field over the inner hairbun and a small spot of reddish steel toning in the field before the eyebrow. MDS, the usual Randall Hoard die state. Ex Heritage 1996 Spring ANA Sale, lot 5051-2000 EAC Sale, lot 310.

365. 1820 N-15 R2 VF30. Small Date. Five points sharper but there is a small pit mark on the temple and a dull rim nick at the first A in AMERICA. Otherwise free of defects. Glossy chocolate with lighter steel brown highpoints. MDS.

366. 1822 N-7 R3+ VG10. Double Profile. At least 10 points sharper but the planchet is uniformly granular. No marks. Slightly glossy dark olive and steel. EDS with clear doubling on 822, all the stars, and from the buns down to the lowest curls.

367. 1822 N-9 R5- VG10. Glossy chocolate brown. There are a few light contact marks between the lips and star 3 and a barely noticeable rim bruise over star 8. EDS.

368. 1822 N-9 R5- G6. Slightly sharper but the planchet is covered with minute roughness. There are a couple light marks on the cheek and a small rim bruise under the stem tip. Glossy dark olive brown. EDS.

1822 REVERSE BROCKAGE



369. 1822 N-10 R2 G5. Reverse Brockage. A few points sharper but slightly rough with some minor verdigris in the protected areas. The only mark is a shallow depression at C in AMERICA. Slightly glossy dark olive with chocolate brown highpoints. The normal reverse is properly centered while the brockage reverse is slightly off center towards the top. The curious feature of this brockage is the strong, clear cud break at TES, which must have come from another N-10 reverse. Perhaps a planchet clip on the other struck cent? Talk to me, John.



370. 1823 Restrike VF35. Sharpness near AU50 but portions of the obverse die cracks have been removed. Otherwise the planchet and surfaces are nice. Glossy medium brown. Very late die state.

371. 1824/2 N-5 R4+ G6. Overdate 4 over 2. Sharpness F12 or a bit better but there are patches of light to moderate pitting on both sides. A sharp nick at C in AMERICA and a small rim bruise at U are the only signs of contact. Mostly glossy medium brown.

1825 N-1 EX. PATTERSON



372. 1825 N-1 R4 VF25. Sharpness VF35, perhaps a bit better, but there are several light rim bruises around both sides, strongest at the top of the obverse. The only other marks are a few small, light nicks in the field above the head. Glossy medium brown mottled with olive and reddish chocolate. MDS. Listed as net VF30 in the Bland census. Ex Del Bland 2/27/64-G.M. Patterson, Kagin's 5/6/88:1141.

373. 1825 N-2 R2 F12+. A few points sharper but nicely recolored glossy olive brown and chocolate, the obverse mottled with some lighter brown. A few minor nicks on the neck and a couple faint hairlines over the outer hairburn. LDS with a series of rim cuds under the date nearly reaching star 13. Ex J.J. Teaparty 4/3/96-Stanley Chen.

LUSTROUS 1825 N-4



374. 1825 N-4 R3 EF40. Slightly sharper with a small patch of light verdigris at TA in STATES. Otherwise the surfaces are smooth and choice. Glossy chocolate brown with peeps of frosty tan faded down from mint color in protected areas. MDS. The fields are slightly reflective, a result of a fresh die lapping. Ex Heritage 2/89:46.



375. 1825 N-7 R3 EF40. Slightly sharper with a few minor contact marks on both sides, including a couple small nicks in the hair over BE in LIBERTY and a few dull, light rim nicks on the obverse. Glossy chocolate brown with frosty golden tan in protected areas. MDS. Ex J.J. Teaparty FPL #66, 11/90.

376. 1825 N-9 R2 F15. Sharpness VF30 but the planchet is covered with uniform microscopic porosity. There are a half dozen small rim nicks on the obverse, and these have been lightly smoothed to minimize the distraction. Otherwise free of marks and there is no verdigris. Slightly glossy dark olive and chocolate. MDS.

377. 1826 N-3 R3 VF20. Glossy medium brown delicately mottled with olive brown on the obverse. No defects. M-LDS with rim cuds at stars 6-8.

MINT STATE DOUBLE PROFILE 1826 N-4



378. 1826 N-4 R2 MS60. Double Profile. Lustrous light brown with delicate overtones of bluish steel. There are a couple tiny ticks high on the neck and a faint hairline scratch in the field under star 7, plus a very faint scuff that barely breaks the mint frost in the field under the chin. MDS with a double profile on all the stars, along the top of the head, coronet, mouth, and LIBERTY. Ex Bowers & Merena 9/96:49.

## The 2001 EAC Convention Sale, March 31, 2001



379. 1826 N-5 R2+ VF25. Ten points sharper with dull rim bumps at the top and bottom of the reverse, and a dull rim nick under star 12. Nice glossy medium brown and chocolate with frosty steel brown toning in the protected areas. M-LDS with strong rim cusps over stars 7-8. Ex Don King 2/11/89-Stanley Chen.

386. 1828 N-3 R2 VF30. Attractive glossy chocolate brown. Choice except for a dull nick under star 7 and a short hairline scratch under the ear. MDS.

380. 1826 N-6 R2 VF25. Double Profile. Slightly sharper but nicely recolored glossy light to medium olive brown. The only notable marks are a small nick over the N in ONE and a short hairline scratch under U in UNITED. EDS with a sharp double profile from the forehead down to the chin, on 826, and on stars 8-13. Ex Willard C. Blaisdell 9/76-Del Bland-R.S. Brown, Jr., Superior 9/30/86:615.

381. 1826 N-6 R2 VF20. Sharper by at least 10 points with extremely fine granularity covering the planchet, the roughness so minor that the surfaces display a decent amount of gloss. Dark olive. No marks or verdigris. E-MDS.



382. 1826 N-9 R3 EF40. Slightly sharper with some light contact marks on both sides, including a fine hairline scratch down the neck and a trail of dull nicks in the field off the chin. There is a patch of microscopic roughness under star 1. Otherwise the planchet is a nice lustrous light steel brown with frosty tan faded down from mint color in protected areas of the reverse. LDS, the reverse die cracks clear.

### SHARP 1827 N-10

383. 1827 N-10 R4+ F12. Slightly sharper with light rim bruises at stars 1, 5, 6, 12, and 13, plus a couple more at RICA. None of these bruises is strong or distracting. Glossy steel brown and chocolate.

384. 1827 N-10 R4+ G4. A point or two sharper with a rim dent at stars 8 and some shallow digs at the L in LIBERTY. Recolored glossy medium brown. Ex 1998 EAC Sale, lot 239.

385. 1827 N-11 R1 EF40. Glossy steel and chocolate brown with frosty luster in protected areas, especially on the reverse. A small stain of reddish chocolate toning at star 7 is the only defect. MDS with lots of strike doubling on the reverse.



387. 1828 N-6 R1 MS63. Lustrous light steel brown with overtones of bluish steel and tiny specks of reddish brown toning on both sides. There is a very faint hairline scratch in the left obverse field, another short one on the cheek, and a small, dull nick on the front edge of the neck. The reverse is choice, nearly gem. LDS with tiny jumps sprinkled about the obverse caused by die rust. This is the Noyes plate coin and listed as MS63 and tied for CC#4 in his census, photo #21378. An attractive cent that comes with an impressive pedigree. Ex Henry C. Hines-Dr. William H. Sheldon-Floyd T. Starr-1949 ANA Sale, 8/23/49:1630-A. Kosoff-R.E. Naftzger, Jr.-1989 EAC Sale, lot 293 (as MS65).



388. 1828 N-6 R1 EF40+. Sharpness AU50 but recolored glossy medium brown and olive. There is a dull nick on the bust and a faint hairline scratch over the N in ONE and another under the wreath ribbon. LDS with a very clear die crack from the outer bun to the dentils right of star 9.

## The 2001 EAC Convention Sale, March 31, 2001

389. 1828 N-7 R3 VF20. Sharpness EF40 with a dull, rather deep dig at the wreath ribbon. Otherwise the surfaces are nice, just a few tiny rim nicks on the reverse and trivial handling marks on both sides. Frosty medium steel brown. MDS. Ex Bruno Crossfield 12/56-Willard C. Blaisdell 9/76-Del Bland.

390. 1828 N-8 R3+ VF25. Rotated Reverse. Ten points sharper but recolored a glossy mix of bluish steel brown, chocolate, and golden tan. A couple faint hairlines over the head and another above the C in CENT. EDS with the reverse rotated 80 degrees CCW.



391. 1828 N-12 R3+ F15. Glossy medium brown with darker olive brown toning in protected areas, especially on the reverse. A few light rim nicks, strongest at star 4, and a small dig near the dentils right of the date. MDS.

392. 1828 N-12 R3+ VG8. Sharpness VF30 but dark and moderately granular. No marks or verdigris. Very dark olive and steel, nearly black. EDS.

### CHOICE 1829 N-1



393. 1829 N-1 R3 EF45+. Attractive glossy steel brown and chocolate with mint luster in protected areas. The only marks are a few very tiny ticks in the field at the chin. MDS. Ex Doug Bird 11/88.

394. 1829 N-4 R4 G5. Choice glossy medium brown with a small spot of darker toning just right of the eye. The planchet is smooth and free of marks except for a few light nicks on the rim at stars 8 & 9 and others over ES in STATES. MDS.

395. 1829 N-4 R4 VG8+. Choice glossy medium brown and chocolate. Flawless except for a dull nick on the jawline at the earlobe. LDS, the crack through R in AMERICA strong.

396. 1829 N-5 R3+ F15. Small Reverse Letters. Glossy medium brown with darker olive brown in protected areas. No marks, but the field before the portrait shows traces of microscopic roughness. Could use a bath. EDS. Minor weakness over LIB, as usual.

### TRIPLE STRUCK 1829 N-6



397. 1829 N-6 R1 G4. Triple Struck. Several points sharper but there are area of minor roughness, strongest in the field before the mouth. Chocolate brown with darker chocolate in protected areas and reddish brown toning in the few rough areas. Struck at least 3 times; one properly centered, another slightly off center to K-3 on the obverse, and another 50% off center to K-3 leaving IBE of LIBERTY and a stray ear at the dentils near stars 9 & 10. The reverse does not show any undertype, but there are incused stars along the right side where it was struck into the obverse of another cent, so there was a real mess going on in the press. This one is worth a close look just to figure out exactly what happened. Good luck!

398. 1829 N-7 R3 VG7. Wheelspoke Reverse. Choice glossy chocolate brown with lighter steel brown highpoints. Virtually flawless, a barely visible rim bruise under the 1 is the only defect, and it is trivial. LDS with all 5 of the wheelspoke die cracks clear plus other cracks inside the wreath. Ex Bob Matthews-Rod Burress.



399. 1829 N-9 R4 F15. Small Reverse Letters. Clipped Planchet. Glossy olive and chocolate brown. A very light rim bruise left of star 7 and a faint hairline scratch left of star 8. MDS, the first A in AMERICA filled. There is a small clip in the planchet affecting the dentils between stars 8 & 9. Could use a bath.



400. 1830 N-2 R2+ VF30. Sharper by 5 points but recolored light brown and olive. No defects. EDS. The wear and surfaces are consistent with a higher grade, but the usual soft strike of the EDS makes grading difficult.

D8. A copy of John Wright's *The Cent Book 1816-1839*, inscribed and signed by the author EAC 2001. All proceeds go to the club.





401. 1830 N-4 R2 EF45. Glossy chocolate brown with mint frost in protected areas. Three very tiny hairline scratches in the field right of star 4 are the only marks. MDS.

SHARPLY STRUCK 1830 N-6 SMALL LETTER REVERSE



402. 1830 N-6 R4 VF35. Small Reverse Letters. Attractive glossy light to medium brown with mint frost in protected areas. There are a few very light marks in the field before the eye, a small nick under the bust tip, and another over the O in ONE. MDS. Fully struck, which is quite unusual for this tough variety. A very attractive example, nearly choice. Ex Superior 3/2/2000:100.



403. 1830 N-8 R1 G6. Off Center. Sharpness F15 but much of the obverse is covered with moderate corrosion and the reverse is uniformly granular. There are some fine hairline scratches on the obverse where verdigris was removed from the corroded areas. Dark reddish chocolate. EDS. Struck 10% off center to K-6.5.



404. 1830 N-10 R4+ G6. Nice glossy chocolate brown. No notable marks, just a few trivial signs of light contact consistent with the grade. M-LDS with a retained cud break over ATEs, a void in the cud over E. A scarce intermediate state of this cud break.



405. 1831 N-1 R1 F12. Double Struck Reverse. Glossy chocolate brown. No notable marks, but the planchet is a bit uneven due to the double strike. The first strike was properly centered, the second was 50% off center to K-6 on the reverse leaving the top half of CENT at the dentils under the wreath. The obverse is now blunted on the top half where it was impressed into a new blank planchet creating a partial obverse brockage. Another interesting mint error that shows more under type the longer you study it.



406. 1831 N-1 R1 EF45. Glossy light to medium brown. A faint hairline down the neck and another above the head. MDS.



407. 1831 N-2 R2+ EF45. Frosty light steel brown. No notable contact marks but there is some trivial roughness in the planchet near the dentils over star 10, as struck. MDS. Strike doubling on stars 11-13.

1831 N-3 EX. HINES-SHELDON-C.D.S.-R.E.N.



408. 1831 N-3 R1 MS63. Lustrous light brown with bluish steel overtones on both sides and a splash of medium brown toning at TY into the hair at right. A couple microscopic contact marks on the lower neck, but it takes a good glass to see them. The reverse is nearly gem. M-LDS. Listed as MS65- and tied for CC#5 in the Noyes census (photo #20404), and MS63 in the Bland census. A very attractive cent with an impressive pedigree. Ex Henry C. Hines-Dr. William H. Sheldon-C. Douglas Smith-R.E. Naftzger, Jr.-1989 EAC Sale, lot 322 (as MS65).



411. 1831 N-12 R1 AU50. Lustrous light steel brown and frosty tan with a small splash of darker steel brown toning at the dentils under star 1 and a speck of dark toning in the field under star 8. E-MDS. A nice cent for the grade. Ex Tom Reynolds.



409. 1831 N-3 R1 AU50+. Glossy light brown and tan with steel brown toning on the highpoints. A few trivial ticks in the field before the face. The surfaces are attractive and show lots of mint luster. MDS. Ex 1995 EAC Sale, lot 344.

RARE 3 POINT CUD 1831 N-12



412. 1831 N-12/2 R5 G6. 3-point cud at star 13. Double Profile. A point or two sharper with minute roughness covering the planchet. There is a dull nick on the rim under the second 1 and a small dig left of star 7. Dark chocolate and steel brown. LDS with a cud break covering 3 points of star 13 and a double profile on the lips, chin, and neck.

410. 1831 N-6 R1 AU58. Lustrous bluish steel brown. A short, very faint hairline on the jawline. The barest trace of light rub on the highest points of the obverse away from mint state. Excellent eye appeal. MDS.

## The 2001 EAC Convention Sale, March 31, 2001



413. 1831 N-14 R4- VF20. Glossy chocolate brown with darker olive toning in protected areas, especially on the reverse. Choice except for some small, dull nicks over ONE. EDS.



414. 1832 N-1 R1 AU50. The obverse is frosty tan and light brown with steel brown toning on the highpoints. The reverse is mostly steel brown with some lighter brown in protected areas. The only mark is a tiny rim bruise at the bottom of the reverse. MDS. Ex William A. Weimer. Kagin's 2/12/87-4081-Paul Padgett-Wes Rasmussen-1995 EAC Sale, lot 349.



415. 1832 N-3 R1 AU50. Double Profile. Clipped Planchet. Glossy light brown with mint frost in the protected areas. A small, dull nick under star 7 and a pair of rim nicks at the second A in AMERICA. E-MDS. A double profile shows on the forehead, nose tip, lips, chin, and stars 8-12. The planchet is slightly clipped affecting the dentils at star 13 and F in OF.



416. 1833 N-3 R1 EF45+. Sharper but nicely recolored lustrous golden light brown and tan with light olive brown toning on the highpoints. The only marks are a short hairline scratch in the field close to the lips and a small spot of darker toning right of E in ONE.

417. 1833/2 N-4 R4 F12+. Overdate 3 over 2. Nice glossy chocolate brown. A small nick at the left foot of the 1 and another over the tip of the nose. MDS.

418. 1834 N-1 R1 VF30. Small 8. Sharpness near EF40 with a group of hairline scratches under CENT. Frosty chocolate brown mottled with darker steel brown and reddish chocolate. MDS.

419. 1834 N-2 R1 VF30. Small 8. Nice glossy medium brown. A nick right of star 4, a smaller one right of star 1, and a couple tiny ticks over EN in CENT. Scarce EDS.



420. 1834 N-2 R1 AU55. Small 8. Glossy steel brown and chocolate with frosty golden tan in protected areas, especially on the reverse. The only mark is a dull rim nick at E in STATES. MDS.

### 1834 N-5 LARGE 8 & STARS MEDIUM LETTERS REVERSE



421. 1834 N-5 R5+ F12. Large 8 & Stars, Medium Letters. Sharpness VF20 with traces of extremely fine granularity and light contact marks on both sides. The only notable marks are a dull, light scratch at star 11, another on the left side of N in UNITED, and dull nicks under the I in UNITED and inside the C in CENT. Slightly glossy dark chocolate with lighter brown highpoints. Not perfect but not too bad for this scarce and very popular "Redbook" variety.

422. 1834 N-5 R5+ AG3+. Large 8 & Stars, Medium Letters. Glossy chocolate brown. The planchet is smooth and free of notable marks. Just honest wear. The bottom half of the date is faint, as is UNI in UNITED, but everything else is legible. Nice for the grade.

423. 1834 N-6 R3 F15. Large 8, Stars, & Letters. Glossy medium brown. The planchet is smooth and has just a few minor marks, strongest a dull nick between stars 8 & 9. LDS with strike doubling on the lips.



424. 1835 N-2 R3 VF20. Slightly sharper with a few light contact marks, mostly on the reverse. Glossy chocolate brown with some lighter reddish brown toning on the right side of the reverse and a splash of darker olive at TED. MDS.



425. 1835 N-4 R+ G6. Glossy reddish chocolate with light brown highpoints. Smooth and free of notable defects. EDS.



426. 1835 N-10 R+ VG10. Sharpness VF20 with very fine porosity in the fields on both sides but no verdigris or notable marks. Dark chocolate with lighter brown highpoints, the surfaces rather glossy in spite of the minor roughness. EDS.

427. 1835 N-11 R+ G6. Glossy dark chocolate woodgrained with lighter brown on both sides. A few minor nicks, including a small rim nick at star 13. EDS. Nice for the grade.



428. 1835 N-12 R+ F15. Rotated Reverse Ten points sharper but recolored glossy very dark steel with lighter brown highpoints on the obverse. A light rim bruise left of the date and a few very tiny rim nicks on both sides. E-MDS, the reverse rotated 30 degrees CW.

429. 1835 N-13 R4 VG10. Double Profile. Glossy chocolate brown, the reverse woodgrained with lighter and darker shades. A dull scuff on the rim left of star 1 is the only defect. MDS with a fine double profile on the forehead and nose, plus a triple profile on the lips. Double and triple profiles are found on portions of stars 1-11. Ex R.S. Brown, Jr., McCawley & Grellman Auctions, Inc., 1/8/94:390.

430. 1835 N-14 R2 VF25. Head of 1836. Slightly sharper but very nicely recolored glossy chocolate brown with mint frost in protected areas of the reverse. A few trivial ticks. Sharply struck EDS, the fields smooth and slightly reflective. Ex Russell Wyatt, Superior 9/30/85:605-Bob Matthews, Superior 5/28/89:770.

431. 1835 N-15 R2 VF25. Glossy light brown woodgrained with chocolate brown on the obverse. Three small rim nicks at ATE in STATES. MDS. Ex Rod Burress.



432. 1835 N-18 R+ G6. A couple points sharper with many light nicks on the obverse and a tiny punchmark in the center of the reverse. Nice glossy medium brown. The reverse is rotated 30 degrees CW.

433. 1835 N-18 R+ G5. Slightly sharper with some faint hairline scratches on the lower obverse. Otherwise very nice for the grade. Glossy medium brown with chocolate brown toning in protected areas. The reverse is rotated 45 degrees CW.

434. 1836 N-3 R1 VF35+. Close to EF40 but there are too many tiny nicks on the obverse to justify the higher grade. The obverse is glossy chocolate brown with some light brown toning above the head and reddish brown toning at the bust tip. The reverse is glossy light brown with steel brown highpoints. E-MDS.



435. 1836 N-3 R1 AU50. Lustrous light steel brown with splashes of darker steel toning on both sides and hints of very faded underlying mint color on both sides. A very tiny tick under the first A in AMERICA and a barely visible rim bruise under the stem tip. M-LDS with a strong cud break covering the denials at star 6.

436. 1837 N-1 R3 EF45. Glossy light steel brown with mint frost in protected areas and a swipe of darker olive toning at OF AM. A tiny spot of carbon midway between the chin and star 2. MDS.

437. 1837 N-11 R1 ANACS graded AU55. Frosty steel brown with splashes of reddish brown at star 8 and on the reverse. There is a spot of reddish verdigris on the rim at the first T in STATES. LDS. EAC graded net EF45.



438. 1837 N-13 R2+ MS60. Lustrous light steel brown with delicate overtones of bluish steel and traces of mint red in protected areas, especially on the reverse. There is a light scuff under star 6 and a few light contact marks at T in CENT. MDS.



439. 1837 N-15 R3+ VF30+. Close to VF35. Nice glossy light brown, steel brown on the highpoints. There are a few tiny nicks on both sides and a small spot of reddish brown verdigris at the top of E in UNITED. MDS. Ex Doug Bird-Del Bland-Dennis Mendelson. Superior 9/21/98:1632.



443. 1838 N-9 R3 ANACS graded MS63 Brown. Lustrous light olive brown and chocolate. The surfaces are frosty and very attractive. The only marks are two tiny voids or nicks close above the head under star 7. LDS with a rim cud from under the date up to above star 12. The upper margin of this rim cud is clear, but the lower end fades gently into the normal rim so that end is indistinct. EAC graded AU58+, but the eye appeal is consistent with a nice mint state cent.



440. 1837 N-17 R4 VF20. Sharpness EF40 with "March 24" lightly scratched into the left obverse field and "1840" likewise scratched into the field above the head. That date must have meant something special to someone long ago; now it's just a detractor from an otherwise choice example of a tough variety. Nice glossy light to medium brown. A few minor rim nicks on the obverse and some very tiny lamination flakes around ERTY. LDS. The cracks and rim cuds are strong.

1838 N-10 EX SMITH-SHAL-JOLLY-JAWS



444. 1838 N-10 R1 MS62. Glossy golden light brown with lots of underlying faded mint red on the reverse. The only mark is a very light nick just right of the upper lip. E-MDS with dentils on the rim at star 3 and stars 4-7, a curious feature also seen on the early states of N-6. The comma crack from the dentils at ME is faint. Ex William Van Roden. Stack's 5/68:345 (misattributed as N-9)-C. Douglas Smith-Dr. Bob Shalowitz-Alan Brotman-Jack Beymer-John Nicholas. Superior 2/22/92:611-DWL.



441. 1838 N-8 R1 MS60. Lustrous bluish steel brown with a small splash of medium brown toning at the tip of the nose and another over T in CENT. The only contact mark is a long, dull scrape in the field left of star 12. The most notable defect is a mint-made lamination in the planchet at the dentils under star 11. Smaller planchet flakes are under star 4 and right of star 8. A tiny planchet clip weakens the dentils over star 10 and IC in AMERICA. M-LDS.



445. 1838 N-11/13 R5 VF20. Glossy light to medium brown with a half dozen small spots of darker olive toning on each side. There is a tiny dig in the field at the chin and a few small nicks at the lowest curl. LDS with a cud break left of star 1, Newcomb's #13.



442. 1838 N-9 R3 VF30+. Glossy light to medium brown. No defects. Rare intermediate die state (E-MDS) with a rim cud under 18 plus a strong crack on the rim under 38 outlining where another cud is about to appear. First I've seen like this.

446. 1839/6 N-1 R3+ G5. Overdate 9 over 6. A couple points sharper with obvious rim dents at star 3 and the first A in AMERICA, plus lighter rim bruises at star 5 and the R in AMERICA and a shallow pit on the chin. Glossy dark chocolate brown with lighter chocolate brown highpoints. MDS with a light crack from the rim at star 4 to the nose. Looks better than it sounds.

MINT STATE 1839 N-5



447. 1839 N-5 R2 NGC graded MS64 Brown. Booby Head. Frosty light steel brown. There are a couple very tiny ticks or planchet flakes on the cheek and a flake out of the rim at star 2, as struck. MDS. EAC graded MS60. (cover coin)

BORDERLINE MINT STATE 1839 N-11



448. 1839 N-11 R1 NGC graded MS63BN. Booby Head. Frosty bluish steel brown with traces of faded mint red in protected areas, especially on the obverse. The only mark is a small nick-like void in the planchet midway between star 1 and the throat. MDS. A hint of very light rub on the highest points away from mint state. EAC graded AU58+.



449. 1839 N-12 R4+ VG7. Booby Head. A point or two sharper with a rim bruise at star 2 plus a few dull, light rim nicks on both sides. Recolored glossy reddish chocolate brown and steel. MDS, a crack through star 4 to the nose.

450. 1839 N-12 R4+ G6. Booby Head. Slightly sharper with a dull nick on the rim left of star 2, another on the dentils at star 10, some nicks on the Y in LIBERTY, and a small rim bruise at star 6. Glossy medium brown. MDS with a light die crack through star 4 to the nose. A decent cent for the grade in spite of the minor defects. Ex Henry Hettger.

Group of 9 Middle Date Cents, 1818-1839. 1818 N-7 G4, 1819 N-2 VG10, 1822 N-3 G4, 1828 N-5 G6, 1836 N-4 VG10, 1837 N-3 VF25, 1837 N-10 VG10, 1838 N-6 VG10, 1839 N-11 VG8. Most are slightly sharper with minor defects. Lot of 9 coins.

LUSTROUS 1840 SMALL OVER LARGE DATE



451. 1840 N-2 R2 AU50. Small 18 over Large 18. Attractive glossy light steel brown with underlying mint luster. A very tiny tick on the rim at star 8 is the only defect. MDS, the date repunching clear. Very nice, nearly choice.

452. 1840 N-3 R1 EF40. Five points sharper with a dull rim nick at star 12 and a tiny planchet flake on the jawline. Choice glossy light brown with mint frost in protected areas. EDS.

453. 1840 N-5 R1 EF45. Choice glossy light steel brown with mint luster in protected areas. A few trivial ticks in the field before the face and a small spot of slightly darker toning left of the ONE. LDS. Nearly choice.

D9 A copy of the *Attribution Guide for United States Large Cents 1840-1857* by J.R. Grellman, inscribed and signed by the author, EAC 2001. All proceeds go to EAC.

EQUAL CC#3 1840 N-5



455. 1840 N-9 R3 VF30. Ten points sharper with a chip out of the rim under the end of the wreath ribbon. Glossy dark olive with medium brown highpoints. Could use a bath to remove crud from protected areas of the reverse. LDS, the bisecting obverse crack strong.



456. 1841 N-2 R2 EF45+. Glossy dark chocolate brown and steel with a splash of darker chocolate toning over star 12. A tiny planchet chip on the bottom of the neck and a very light nick over the hairbuns. E-MDS. Ex R.S. Brown, Jr., Superior 6/1/98:459.

457. 1841 N-5 R3- VF30. Glossy medium brown and chocolate. A tiny nick on the coronet over I in LIBERTY and a dull scuff on the rim under the wreath ribbon. LDS.

458. 1842 N-5 R3+ AU50+. Lustrous brown with reflective surface. A small area of darker toning between stars 1 and 2.

459. 1842 N-6 R1 AU50. Frosty light steel brown with a splash of light reddish brown toning at star 1 and a smaller one over star 4, plus a small spot of dark olive toning in the dentils at ST in STATES. A few minor signs of light contact, none notable. E-MDS with the lumps in the field at the lower curl and lips dull but visible.



460. 1842 N-6 R1 AU58. Lustrous light steel brown with slightly faded mint red in the protected areas. There is a carbon spot on the jawline; otherwise choice. Just a hint of rub on the highest points. LDS, the old N-10.



461. 1842 N-7 R3+ EF40. Glossy steel brown and chocolate with mint frost in protected areas. There are a few minor ticks on the neck, a faint hairline on the cheek, and a tiny nick on the coronet over I in LIBERTY. MDS. (Note: The hair at the ear is weaker than you might expect for a late date coin of this grade, but this variety was struck with the center of the obverse bulging outward causing the hair over the ear to be weakly struck and to wear down much faster than normal. In fact, you can attribute this variety at arm's length just by observing the convex obverse.)

454. 1840 N-5 R1 MS63. Lustrous steel brown with at least 15% of the original mint red, mostly on the reverse. The only defects are a couple very faint contact marks on the cheek and chin. M-LDS. Tiny rim cuds show from star 6 nearly to star 10. The coronet over LIB is a bit softly struck, as usual. Removed from an NGC slab graded MS64RB. Tied for CC#3.

## The 2001 EAC Convention Sale, March 31, 2001

462. 1843 N-2 R1 AU50. Slightly sharper with a dull rim nick at star 6. Nice glossy light brown, mint frost covering most of the protected areas. MDS with a small rim cud at UN. The spur from the base of N in ONE is clear. Removed from a PCGS slab graded MS62BN.



463. 1843 N-2 R1 AU50. Frosty steel brown with delicate overtones of bluish steel and traces of faded mint red on both sides. There are some tiny nicks scattered about both sides and a small stain of slightly darker toning at star 10. The only nicks worthy of individual mention are a dull one under star 4 and a small one on the rim under the stem tip. LDS with a small but clear rim cud at UN in UNITED.

**SHARPLY STRUCK 1843 N-4  
PETITE HEAD LARGE LETTERS REVERSE**



464. 1843 N-4 R1 AU50. Obverse of 1842, Reverse of 1844. Sharpness mint state but recolored glossy steel brown and chocolate. The only marks are a dull, light rim nick at T in UNITED and an even smaller one at E in AMERICA. MDS. Ex Keith Kelman-CVM-Doug Bird-Dr. Philip W. Ralls-Superior 1/28/90;893.

465. 1843 N-4 R1 VF35. Obverse of 1842, Reverse of 1844. Slightly sharper with a light rim bruise under the date and another at ED in UNITED. Glossy medium brown and chocolate. MDS.

466. 1843 N-8 R2+ EF45. Glossy light brown. A small spot of very light verdigris in the dentils over E in UNITED and a small splash of darker olive toning right of T in CENT. MDS. Removed from a PCI slab graded AU58, the slab photo included.



467. 1843 N-9 R2 AU58. Lustrous steel brown and chocolate. A tiny nick left of the carlobe, a thin nick in the field behind the head, and a speck of carbon on top of the 3 in the date. Just a bit of very light friction on the highest points. LDS with a small rim cud at UN and a stronger one at star 11. Removed from an NGC slab graded MS63BN.

468. 1843 N-12 R2 EF45. Slightly sharper with some tiny rim nicks at ES in STATES. Glossy light to medium brown with underlying mint luster in the protected areas. Sharp EDS.

**LUSTROUS 1843 N-12**



469. 1843 N-12 R2 MS63. Attractive lustrous bluish steel brown with traces of faded mint red on the obverse, at least 20% of the red remaining on the reverse. The only marks are a small spot of reddish brown toning right of star 8 and some darker toning on star 7. MDS with a small rim cud over the U in UNITED plus a tiny rim cud between that one and the tip of the ribbon. The fine die lines are still clear.



## The 2001 EAC Convention Sale, March 31, 2001



470. 1844 N-1 R1 NGC graded MS63BN. Frosty steel brown with generous traces of mint red in protected areas, especially on the reverse. There are some very tiny ticks on the cheek and a small chip out of the planchet on the front edge of the neck, as struck. E-MDS with repunching at the base of the 1 clear and small rim cusps under the date. Both dies are uncracked. EAC graded MS60.



471. 1844 N-1 R1 EF40. Glossy chocolate brown, the obverse woodgrained with lighter brown. There are some light contact marks in the field at the chin and a collection of tiny pinpricks over CE in CENT. MDS.

### LATE DIE STATE 1844 N-3



473. 1844 N-5 R1 MS60+. Lustrous light olive brown with 5% of the mint red remaining on the obverse, 30% on the reverse. Would rate a slightly higher grade but there is a nick on the jawline and a small carbon spot at the berry left of O in ONE. M-LDS.

474. 1844 N-7 R2+ AU50. Glossy medium brown with frosty lighter brown in protected areas. A small spot of reddish brown toning under the chin is the only mark. EDS.



472. 1844 N-3 R2+ MS60. Glossy steel brown with sea-green overtones and 10% of the mint red remaining, mostly on the obverse. The left obverse field is covered with tiny pre-striking planchet marks that didn't completely smooth out when struck. In addition, there is a nick in the field under the outer hairburn and a small carbon spot left of star 13. The reverse is smooth and mark-free. LDS with a strong rim cud from star 9 nearly to star 11, plus other tiny rim cusps at stars 7-9.

475. 1845 N-4 R1 MS60. Lustrous dark steel brown and chocolate with traces of faded mint red on both sides. The only marks are four closely spaced light nicks in the field over star 12 and a tiny nick on the chin. Sharply struck MDS. Removed from a PCGS slab graded MS63BN.

476. 1845 N-6 R2 VF35. Slightly sharper with a dull nick right of star 4 and a few light contact marks in the field behind the head. Glossy medium brown. Sharp E-MDS.



477. 1845 N-11 R3+ NGC graded MS63BN. Frosty olive and steel brown with traces of mint red on the obverse, 25% of the red remaining on the reverse. A few light nicks at the jaw and throat, otherwise free of defects. EDS with a long, thin rim cud from below star 3 up to star 4. EAC graded MS60, CC#5.

PROOFLIKE EARLY DIE STATE 1845 N-13



478. 1845 N-13 R2+ MS60+. Prooflike VEDS. Lustrous light steel brown with overtones of bluish steel and 10% of the original mint red remaining on the obverse, 25% on the reverse. There is a pre-striking nick-like mark on the chin and a few microscopic contact marks elsewhere on both sides, including a small nick over the tip of the wreath ribbon. EDS, the earliest seen, with fine die polishing lines covering the fields on both sides. Those fields are reflective, especially the reverse. Tied for CC#4 overall but finest of the die state. (cover coin)

479. 1846 N-5 R2 VG10. Sharpness VF30 with a deep gash in the wreath under O in OF reaching the O in ONE. Otherwise free of defects. Glossy medium brown. LDS with a rim cud over TATE, one of only 4 known with this intermediate stage of the reverse cud breaks. Both ends of the cud are clearly defined, the right end stronger.



480. 1846 N-6 R1 MS64. Frosty bluish steel brown with highly lustrous surfaces and about 10% of the original mint red, mostly on the reverse. Virtually flawless. A speck of darker toning close over the O in ONE is a good identification mark. MDS. Tied for CC#2. Ex Tom Reynolds.



481. 1846 N-6 R1 MS60. Glossy steel brown and chocolate with underlying mint frost and generous traces of mint red on both sides. There are a few very light ticks in the field under the chin and a dull nick on the rim at E in STATES. MDS. Ex Chris McCawley 3/18/88-March Wells-Superior 2/7/2000:2191.

482. 1846 N-11 R1 EF40. Medium Date. Slightly sharper with a dull scrape over star 13 and a few other minor contact marks on the obverse. Glossy light to medium brown. MDS.

483. 1846 N-12 R1 AU50. Tall Date. Sharpness closer to mint state but nicely recolored glossy light steel brown with hints of bluish steel overtones. The color is attractive and looks quite natural. There are a couple light contact marks on the chin and a speck of light verdigris inside the C in CENT. EDS.

### EDS 1846 N-15



484. 1846 N-15 R4+ VF25. Slightly sharper but recolored glossy light olive and golden brown. There is a line of tiny ticks over star 3 and two small spots of reddish brown toning at stars 8-10. Rare EDS with the obverse uncracked.

485. 1846 N-20 R3 VF30+. Sharpness EF40 but there are some nicks on the cheek and neck, including a rather strong nick at the base of the neck, plus a few lighter nicks on the rim at star 10. Glossy light to medium brown. MDS.

### CURIOUS 1846 DATED COPPER TOKEN



486. 1846 Cent-sized copper struck from handmade dies. VF20. Glossy medium brown and chocolate. There is a dull, light scratch down the neck to the bust. The fine details are a bit blunted giving it the look of a cast piece, but the rims indicate it was struck. The eagle on the reverse is similar to those found on some Spielmarke game counters. Struck in copper, 26.5 millimeters, 152.1 grains. A curious piece.



487. 1847 N-3 R3 AU55. Mint state sharpness but there is a dull rim nick at F in OF. Lustrous bluish light steel brown with a few small spots of darker chocolate brown toning on the obverse, strongest just over the bust tip. LDS, 3 rim cuds on the reverse, and all of the cuds are clear. CC#3 of this die state. Ex Dr. Sartoris, R.S. Brown, Jr.



488. 1847 N-5 R3+ EF45. Slightly sharper with a few light nicks on the chin and neck, plus two on the right end of the eyebrow. Glossy light brown with mint frost in protected areas. MDS.



489. 1847 N-7 R2+ AU50+. Attractive lustrous steel brown with bluish steel overtones. A short, barely visible hairline over star 12 and a pinprick over C in CENT, neither mark visible without a strong glass. LDS with a strong rim cud under 18 reaching star 1, one of 14 known with this intermediate stage of the cuds. Ex 1997 EAC Sale, lot 340.

490. 1847 N-39 R3- VF35. Slightly sharper with some light nicks on the cheek. Glossy medium brown. M-LDS.



491. 1848 N-2 R1+ AU50. Sharpness very close to mint state but there are dull rim nicks under star 2, at star 8, and under star 11. Choice glossy medium brown with underlying mint luster. MDS. Removed from an NGC slab graded MS63BN. Ex Superior 2/8/98:1250.

1848 N-3 EQUAL CC#4 EX. RASMUSSEN



492. 1848 N-3 R2 MS62. Glossy steel brown with at least 15% of the mint red remaining, mostly on the reverse. There are a couple small spots of darker toning at stars 6 & 7 but no notable contact marks. E-MDS with a sharp die lapping line in the right obverse field from the main curl to above star 12 and repunching clearly visible on all 4 digits of the date. Tied for CC#4 overall but finest of the die state. Ex Dr. George N. Poliss, Bowers & Merena 6/10/91:693-Wes Rasmussen, Superior 2/8/98:191.

SIXTH FINEST 1848 N-4



493. 1848 N-4 R4 EF45. Nice glossy light to medium brown. There is a small stain of reddish brown toning at the second A in AMERICA, otherwise virtually flawless. MDS with repunching still visible inside the lower loops of both 8's. CC#6.

494. 1848 N-24 R5- VF25. Five points sharper but recolored glossy golden light olive brown. A few tiny pinpricks over star 2 and a small rim nick at C in AMERICA, otherwise free of marks. LDS, Ex 1995 EAC Sale, lot 441.



495. 1848 N-27 R2 AU58. Frosty medium brown. A small spot of very light carbon over star 11 and a couple tiny rim nicks at F-A. MDS with many shallow low spots (from crud on the die) around ONE CENT. Removed from an NGC slab graded MS62BN.

EQUAL CC FOUR 1848 N-31



496. 1848 N-31 R2+ MS62. Nice glossy steel brown and chocolate with at least 20% of the original mint red remaining. The only marks are a pair of tiny rim nicks at stars 9 & 10. M-LDS with two dentils fused over the R in AMERICA. Tied for CC#4. Noyes photo #30190. Ex 1987 Alabama Numismatic Society house-J.R. Grellman-R.S. Brown, Jr.



497. 1848 N-42 R6 VF20. Glossy medium brown. There are a few light contact marks on the cheek & some faint hairline scratches at stars 7-10.

## The 2001 EAC Convention Sale, March 31, 2001

498. 1849 N-2 R2+ VF35. Slightly sharper with a few light nicks on the cheek and in the field under the chin. Nice glossy light to medium brown. LDS, state p. with extensive die crumbling on the reverse.



499. 1849 N-7 R4 AU50. The obverse is glossy reddish steel brown, the reverse is choice light steel brown with lots of mint luster. A dull vertical nick left of the ear, a light nick right of star 3, and a tiny rim nick at star 10. M-LDS, state e, with lots of die rust and crumbling on the obverse. Tied for CC#8 overall and finest of the die state. Ex NASCA Longwood Sale 11/19/82:104-Stack's 4/30/96:221-Wes Rasmussen Superior 2/8/98261.

### FINEST KNOWN EARLY DIE STATE 1849 N-12



500. 1849 N-12 R1 MS60. Glossy golden light olive brown. The surfaces are smooth and lustrous. A tiny nick over star 6 and a very light tick between star 1 and the chin, plus a tiny chip out of the planchet on the rim at the first S in STATES. Sharp EDS. CC#1 of the die state.

### FINEST KNOWN EARLY DIE STATE 1849 N-16



501. 1849 N-16 R5 AU50. Glossy reddish chocolate brown and steel with mint luster in protected areas. A few trivial ticks on the obverse, including a tiny nick under star 7. E-MDS. Tied for CC#4. Ex Kagin's 10/82:217-Philip Van Cleave, Kagin's 1/30/86:4386-Del Bland-Bob Vail-1997 EAC Sale, lot 371.

502. 1849 N-24 R3+ EF40. Slightly sharper with a few dull, light contact marks on the ear and a pair of dull rim nicks at NI in UNITED. EDS, the die lines over UNIT sharp. Ex Gary Ruttenberg.



503. 1850 N-4 R1 AU58+. Lustrous steel brown with at least 10% of the mint red remaining, mostly on the reverse. The barest hint of rub on the highest points away from mint state. The only mark is a speck of carbon over star 6. LDS with a shallow low spot on the neck and another over C in CENT. Ex R.S. Brown, Jr.

504. 1850 N-6 R1 AU55. Choice lustrous light steel brown. A tick under star 7, a dull nick on the lower edge of the bust over the 8, and a speck of carbon in the dentils at E in AMERICA. LDS, the crack at UNITE bold.

### FINEST KNOWN EARLY DIE STATE 1850 N-11 EX. WES RASMUSSEN



505. 1850 N-11 R3+ MS60. Lustrous light steel brown with overtones of bluish steel and 10-15% underlying slightly faded mint red on both sides. Would grade a couple points higher but there is a faint hairline scratch from the browlock to star 3 and a small spot of reddish brown corrosion on top of ER in LIBERTY. Sharp EDS. The fields are smooth and slightly reflective, the rims are squared, and all the fine die lines seen on the proofs are still visible. A variety that's difficult to find in high grade, and only two are known in mint state. Finest known of the EDS business strikes. Ex Robert Clark-Denis Loring 2/6/88-Wes Rasmussen, Superior 2/8/98:299.

506. 1850 N-14 R4 VF35. Sharpness EF40 with a few too many light contact marks for the that grade, including a light rim nick at U and a barely visible rim bruise at IT in UNITED. Attractive glossy light brown. E-MDS.

D10. Leather bound copy of the C. Douglas Smith Collection Sale by McCawley & Grelman/Superior. 1 of 10 signed leather bound copies made. All proceeds go to EAC.



507. 1851/81 N-3 R1 MS63. Date repunched over inverted date. Attractive lustrous bluish steel brown with underlying mint color in the protected areas. The only marks, and they are quite trivial, are a tiny tick on the eyebrow, another on the left side of the O in ONE, and a small spot of darker steel (not carbon) in the field just left of the chin. MDS, the 81/51 still clear. Excellent eye appeal. Removed from a PCGS slab graded MS65 Brown. Ex J. Lipka 1993.

508. 1851 N-7 R1 AU50. Frosty light steel brown. A few microscopic contact marks of no consequence. MDS.

SECOND FINEST KNOWN 1851 N-9



509. 1851 N-9 R3- MS64. Mint red toning down to steel brown, more than half the original red remaining, mostly on the reverse. There are traces of an old fingerprint before the throat and at NE in ONE. A tiny tick right of star 2 and a speck of carbon in the dentils under star 4. E-MDS. Fine vertical die lines in the obverse fields, clearest close to the portrait. Tied for CC#2.

CHOICE GEM MINT RED 1851 N-10



510. 1851 N-10 R1 MS65+. Blazing Mint Red. At least 98% of the original bright mint red remains. There is an extremely faint hairline scuff along the jawline that barely breaks the mint frost, and a few faint specks of carbon on the neck and shoulder, plus a tiny spot of darker toning close over star 4. Otherwise this piece would rate a grade several points higher. A gem cent. Some dates in the 1850's often are available with lots of mint red, but 1851 is not one of them. A great cent for a date or type set. Removed from a PCGS slab graded MS65 Red. Ex Bowers & Merena 1/24/90:1219. (cover coin)



511. 1851 N-26 R5- AU50. Choice glossy medium brown. There is a tiny nick close to the dentils over star 6 and a small spot of darker olive toning in the field off the nose tip. MDS. Ex Henry Chapman-unknown-Stack's 3/11/98:127 (misattributed as N15).

## The 2001 EAC Convention Sale, March 31, 2001

512. 1852 N-5 R2 PCGS graded MS64 Brown. Frosty light steel brown with overtones of sea-green and bluish steel. There are a few light contact marks on both sides, including a pair of light hairline scratches over the N in ONE. A tiny spot of darker toning over star 13 and a small carbon spot in the hair under star 8 are the most obvious defects and they are not at all distracting. MDS. EAC graded MS60, tied for CC#7.

### THIRD FINEST 1852 N-6 WITH TERMINAL RIM CUD



513. 1852 N-6 R2- MS62. Lustrous light steel brown with 5% of the mint red on the reverse. The surfaces are covered with satiny mint luster. There is a speck of darker toning in the field close before the eye and some very tiny rim nicks at star 6. LDS with a large, strong rim cud from near star 10 down to star 12. Tied for CC#4 overall and #2 of this die state. Excellent eye appeal. Ex Doug Bird-McCawley & Grelman Auctions, Inc., 1/8/94-Wes Rasmussen, Superior 2/8/98:379-March Wells.



514. 1852 N-7 R1 MS60. Glossy medium brown with nice lustrous surfaces. There is a small spot of reddish brown toning inside the ear, a small patch of minor verdigris on the ribbon end, and a few very tiny rim nicks on the reverse. M-LDS. Tied for CC#5 overall and #2 of this die state. Ex W.E. Johnson-R.S. Brown, Jr., Superior 9/30/86:1309-Herman Halpern, Stack's 3/16/88:682-Wes Rasmussen, Superior 2/8/98:380-March Wells, Superior 2/7/2000:2298.



515. 1852 N-8 R2 MS62. Mint red toning down to steel brown, about a third of the red remaining. Would rate a slightly higher grade except for a half dozen small spots of darker toning (not carbon) sprinkled about the obverse, the largest of these on the rim over star 8. The only contact mark is a faint hairline over star 12. Sharp EDS, both dies uncracked and the fields covered with fine die polishing lines. The fields are smooth and slightly reflective. Tom Reynolds.



516. 1852 N-11 R1 MS60+. Lustrous light steel brown with bluish steel overtones and 15% of the original mint red. Would grade a few points higher but there are two nicks left of star 11 and one lighter one over that star. Otherwise this cent is choice. MDS. Ex Tom Reynolds.

517. 1852 N-16 R1 EF40. Slightly sharper with a faint scuff at star 7 and a small dig at the right top of D in UNITED. Glossy medium brown with steel brown highpoints. MDS.

518. 1852 N-23 R6- VF20. A few points sharper but the obverse was very lightly cleaned leaving some faint hairlines on the highpoints. A few light contact marks consistent with the grade and traces of glue on the obverse. Glossy light to medium brown, the obverse highpoints lighter. MDS.

### DOUBLE STRUCK 1853 N-10

519. 1853 N-10 R1 AU50. Double Struck. Sharpness mint state but cleaned, now retoned glossy golden tan with small splashes of darker brown toning on the obverse. No contact marks, but the edge has been smoothed for some reason. MDS. Double struck, but the offset is small, perhaps a half millimeter. Doubling is most obvious on the upper stars and ONE CENT. Ex 2000 EAC Sale, lot 407.

### CC # 1 E-MDS 1853 N-11

520. 1853 N-11 R2- MS60+. Glossy bluish steel brown and chocolate with 15% underlying faded mint red, mostly on the obverse. No spots, the only notable mark being a very tiny rim nick a O in OF. Would rate a slightly higher grade but the obverse is covered with an extremely thin coat of lacquer. E-MDS. Tied for CC#7 overall but #1 of the die state. Ex Howard R. Newcomb.

TIED FOR CC #6 1853 N-12



521. 1853 N-12 R1+ MS62. Frosted bluish steel brown with 10% slightly faded mint red, mostly on the reverse. A very faint vertical hairline on the cheek and a few specks of minor crud around STATES are the only defects. MDS. Tied for CC#6.



522. 1853 N-17 R2 MS60. Frosty light to medium brown with a few traces of mint red on both sides. A thin, light nick over star 2 and a small spot of darker toning over star 10. Sharp EDS, the fine die lines crisp. Not in the overall census but second finest of the EDS. Removed from an NGC slab graded MS64BN.



523. 1853 N-19 R1 MS60. Misaligned Dies. Lustrous light bluish steel brown with overtones of sea-green and hints of very faded mint color in protected areas. No spots or contact marks, but there is a chip out of the rim at the ribbon tip, as struck. M-LDS, the obverse misaligned 10% to K-9 and strike doubling on STATES OF AMER.



524. 1853 N-25 R1 MS63. Lustrous steel brown with at least 20% of the original mint red remaining, mostly on the reverse. There is a light scuff close under the eye and a tiny flake out of the planchet under star 2. MDS with a shallow low spot covering most of the upper half of the neck. Removed from a PCGS slab graded MS64 Red & Brown. Ex McCawley & Grellman Auctions, Inc., 7/31/93:368-R.S. Brown, Jr., Superior 2/7/2000:2326.



525. 1854 N-3 R1 MS60+. Lustrous light brown with 5-10% of the mint red, mostly on the reverse. Would rate a slightly higher grade but there is a thin lamination in the planchet at AM in AMERICA. Nicely struck E-MDS. Ex Bob Vail, Superior 9/7/97:858-Superior 2/7/2000:2335.

526. 1854 N-24 R2+ EF45+. Glossy medium brown with steel brown highpoints. There are a few very light contact marks on the obverse, including a tick on the nostril, plus a bit of very light verdigris in the leaves under the second A in AMERICA. EDS.



527. 1854 N-28 R5 VF25. Slightly sharper but recolored glossy reddish brown and chocolate. There is a shallow fissure in the planchet on the rim over STAT and a couple small spots of greenish verdigris over the stem tip. MDS.

528. 1855 N-8 R2- AU50. Sharpness closer to mint state but there are some hairline scratches on the rim under the date and a few tiny ticks in the field under star 7. Otherwise very nice. Frosty light steel brown. EDS, the fine die lines clear.



529. 1855 N-9 R1 AU50. Knob on Ear. Sharpness close to mint state with a scuff on the knob cud, a faint hairline scratch from under the earlobe to the dentils under star 1, and a light nick on the rim over the first S in STATES. Frosty light brown. MDS with the knob cud under T fully developed and the branch under the Y only outlined by cracks. Removed from an NGC slab graded MS62BN.

530. 1855 N-10 R1 AU58. Slanted 5's. Glossy golden light brown and tan. The only marks are a tiny struck-through line just right of the mouth and a dull rim nick at R in AMERICA. Just a faint touch of friction on the highest points away from mint state.



PROOF 1855 N-10



531. 1855 N-10 R5 (as a proof) NGC graded Proof-65 Brown. Lustrous bluish steel brown and chocolate with underlying faded mint red on both sides. The fields are nicely reflective and free of any notable hairlines. There is a very dull nick on the rim over star 6, some extremely tiny ticks hidden in the main curl, and a barely visible flake out of the planchet in the field under the outer hairbun, plus another similar flake under the N in ONE. An attractive example of the proof version of this variety. EAC graded PF60+. Ex Bowers & Merena 9/30/96:54.

532. 1855 N-10 R1 MS62. Slanted 5's. Lustrous bluish light steel brown with traces of very faded red in protected areas. A small nick on the bottom edge of the bust over the 8 and a couple tiny ticks on the rim right of star 12. Sharply struck E-MDS. 1855 N-10 R1 AU58. Slanted 5's. Glossy golden light brown and tan. The only marks are a tiny struck-through line just right of the mouth and a dull rim nick at R in AMERICA. Just a faint touch of friction on the highest points away from mint state.

SECOND FINEST EDS 1856 N-2



533. 1856 N-2 R1 NGC graded MS64 Red & Brown. Slightly faded mint red toning down to light steel brown, nearly half the red remaining, mostly on the reverse. A tiny planchet flake over star 4 and a small void on the rim at that star, plus another tiny flake under the 5 in the date, all as struck. EDS. Extremely shallow low spots cover much of the neck and field at the right, with similar low spots around ONE CENT. EAC graded MS63. Tied for CC#6 overall and #2 of the EDS.

534. 1856 N-10 R1 AU58. Glossy steel brown with traces of mint red on both sides. A tiny nick in the field right of star 8 and a couple more on the rim over star 6. MDS.



535. 1856 N-19 R2 EF40. Off Center. Slightly sharper with a short hairline scratch on the cheek. Recolored glossy light olive brown with some reddish brown toning in protected areas of the obverse. EDS. Struck 20% off center to K-1. Ex Denis Loring 4/72.

536. 1857 N-1 R1 MS60. Large Date. Frosty light steel brown with smooth, lustrous surfaces. There is a long, thin nick in the field over star 1 and a dull nick on the rim under star 12 plus another smaller one on the rim under the 1 in the date. E-MDS.

537. Group of 11 Late Date Cents, 1840-48. 1840 N-8 VG10, 1841 N-7 G6, 1842 N-8 VG10, 1843 N-2 VG10, 1844 N-5 G5, 1845 N-13 G6, 1846 N-2 F15, 1846 N-11 VF20, 1847 N-19 F12, 1847 N-24 F15, 1848 N-1 F12. Rare EDS with sharp repunching on the 184. Many are slightly sharper with minor defects. Lot of 11 coins.

D11. Set of all the photographs used to make this EAC Catalog, several hundred photographs. All proceeds go to EAC.

D12. Deluxe leather bound presentation copy of the 2001 EAC Sale, Signed and Numbered. One of only ten leather bound copies made. All proceeds go to EAC.

# The 2001 EAC Convention Sale, March 31, 2001

## TERMS OF SALE

1. This Sale is conducted by and for the benefit of Early American Coppers, Inc., a not-for-profit organization, (EAC) and its members. The net proceeds of this Sale are utilized to further EAC's primary activities, which are to promote, encourage and sustain a continued interest in early American copper coins and to disseminate relevant information concerning these coins.
2. This is a private club sale. Participation is by invitation only and is limited to members of the Early American Coppers Club. The auctioneer may withdraw any lot, without prior notice, for any reason whatsoever.
3. The highest bidder acknowledged by the auctioneer shall be the buyer. In case of dispute the auctioneer may at his sole discretion reopen a lot. In all cases the auctioneer's decision shall be final and binding on bidders.
4. All sales are payable in U.S. funds immediately upon receipt of invoice unless other arrangements have been made prior to the sale. Lots delivered in state of sale are subject to all applicable state and local taxes unless appropriate permits are on file with us.
5. Postage will be added to the invoice of all successful mail bidders.
6. A 10% buyers fee will be added to all invoices.
7. Please keep in mind this is not an approval sale. All sales are considered final. Sales to the floor may not be returned for any reason save authenticity. Sales to mail bidders are final unless lot proves to have been misdescribed.
8. Lots will be available for viewing at the EAC Convention.
9. Mail bids or phone bids will be accepted up through the day of the sale. All bids will be reduced. Lots will open at one increment above second highest mail bidder. Bidding will proceed as competition dictates with the lot either selling to the floor or to the mail bidder at one increment above the second highest bid.
10. Consignor may bid or place a reserve bid on their own coins. Any coins repurchased by a consignor will be announced as a pass.

## MAIL BIDS

Please mail all bids to:  
 M&G • P.O. Box 951988 • Lake Mary, FL 32795-1988  
 Phone 407-321-8747 or Fax 407-321-5138

### Mail Bid Form

I hereby authorize M & G to execute the following bid(s). The bid(s) is made subject to the "Terms of Sale", and I agree to remit promptly on receipt of invoice or notification that the bid(s) is successful. This signed bid sheet constitutes an agreement between me and M & G.

NAME \_\_\_\_\_

ADDRESS \_\_\_\_\_

CITY \_\_\_\_\_ STATE \_\_\_\_\_ ZIP \_\_\_\_\_

SIGNATURE \_\_\_\_\_ PHONE ( ) \_\_\_\_\_ EAC # \_\_\_\_\_

| LOT | BID |
|-----|-----|
|     |     |
|     |     |
|     |     |
|     |     |
|     |     |
|     |     |
|     |     |
|     |     |
|     |     |
|     |     |

| LOT | BID |
|-----|-----|
|     |     |
|     |     |
|     |     |
|     |     |
|     |     |
|     |     |
|     |     |
|     |     |
|     |     |
|     |     |

| LOT | BID |
|-----|-----|
|     |     |
|     |     |
|     |     |
|     |     |
|     |     |
|     |     |
|     |     |
|     |     |
|     |     |
|     |     |

| LOT | BID |
|-----|-----|
|     |     |
|     |     |
|     |     |
|     |     |
|     |     |
|     |     |
|     |     |
|     |     |
|     |     |
|     |     |

A Buyer's Commission of ten percent (10%) on each individual lot will be added to all purchases made by all bidders and will be based on the total amount of the final bid. THE BUYER'S COMMISSION WILL BE ADDED TO ALL INVOICES. **We cannot be responsible for errors in handling. CHECK YOU BID SHEET CAREFULLY.**

Please Mail Bids To: M & G • P.O. Box 951988 • Lake Mary, FL 32795-1988 • Phone 407-321-8747 • FAX 407-321-5138





P.O. Box 2967 • Edmond, Oklahoma 73033  
405-341-2213