

\$15.00



Chris McCawley and Bob Grellman
present the

2003 EAC Sale

featuring the collections of
John Peters and Dr. William E. Hopkins

April 26, 2003

Chris McCawley & Bob Grellman

present

the

2003

EAC Convention

sale

To be held at the

Drawbridge Inn

2477 Royal Drive

Ft. Mitchell, Kentucky

Saturday Night, April 26, 2003, 7:00 p.m.

Welcome to the

2003

EAC Club Sale

We want to thank the many members who supported this year's sale. Especially John Peters and Dr. William E. Hopkins who consigned important collections of Half Cents and Early Dates to the Sale.

Our sale will be held, Saturday Night, April 26 at 7:00 p.m. at the Drawbridge Inn in Fort Mitchell, Kentucky.

Lot viewing will be held during the Early American Copper Club Convention April 23-26. We welcome your participation by mail or in person. Please feel free to call: Chris McCawley, (405) 341-2213 or Bob Grellman, (407) 321-8747 cell 407-221-1654 to discuss any lot in the sale. Mail, phone or fax bids should be directed to Bob's Florida address. Please read our terms of sale on page 107 before bidding.

Thanks to Jim and Naomi Tuttle and all the staff at Advance Graphics.

This a private sale, please read our terms of sale on (p.107) before bidding.

2003 EAC SALE

COLONIALS



001. (1672-75) Saint Patrick Farthing Breen-208.5 Griffée G1-4/1e VF20. Sharper with patches of moderate porosity. No verdigris or marks, and the color is an attractive glossy medium brown. A thin planchet crack extends from the rim down to the crown, as struck. Sharply struck with excellent detail. Five examples known of this variety, all at about the same net grade. Noyes photo #72113. Ex EAN Auction, 6/24/95:401-John Griffée. Comes with a signed Griffée envelope. Weight 64.5 grains.



002. (1672-75) Saint Patrick Farthing Breen-208.5 Griffée G1-4/1t VF20. Smooth glossy medium brown with olive brown toning in protected areas. A choice example, free of any defects. Compare the obverse layout to the previous example, especially the position of the B to the church cross. One of only 4 known. Noyes photo #72120. Ex Bill Anton 2/5/97-John Griffée. Comes with a signed Griffée envelope. Weight 106.6 grains.



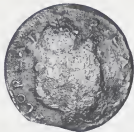
003. (1672-75) Saint Patrick Farthing Breen-211.4 Griffée G21-3/1a G6. Glossy medium brown and chocolate. The surfaces are smooth and choice, just heavily worn. Portions of the legend are weak. A strong die crack shows from the top of the crown to just below the R in REX, and this crack shows on all 5 of the known examples. Only one of these examples is better than VG, and it has not surfaced for 25 years. Noyes photo #72077. Ex Bob's Coins in Elmwood, NJ on 1/6/94-John Griffée. Comes with a signed Griffée envelope. Weight 83.4 grains.



004. (1672-75) Saint Patrick Farthing Breen-213.14 Griffée G44-9/5a F12. Rather glossy dark olive brown with lighter golden brown highpoints. The legends are clear except where affected by a curved planchet clip, as struck, affecting the obverse at K-7 to K-9 and the reverse from K-3 to K-5. Breen's description of B-213 says it has punctuation stars or dots in a row, and these become progressively smaller. This coin is a new variety because of two new features: a colon in front of the R in REX and a single dot between the letters R & E in FLOREAT. Some of the punctuation can't be seen, but the colon before the R is clear. In addition the E's are made from an F. A die crack passes down through the bases of ES to the church steeple. One of 6 known. Noyes photo #72025. Ex Mike Ringo-John Griffée. Comes with a signed Griffée envelope. Weight 86.3 grains.



005. (1672-75) Saint Patrick Farthing Breen-212.11 Griffée G31-7/4a VG7. Smooth glossy chocolate and steel brown. This variety uses Breen's "Masonic Punctuation," which refers to the triangular grouping of three periods after the X in REX. John Griffée calls this grouping a "tri-colon." Eight examples are known, with grades ranging from G-EF. Noyes photo #72132. Ex Bob Vlack 4/16/96-John Griffée. Comes with a signed Griffée envelope. Weight 84.2 grains.



006. (1672-75) Saint Patrick Farthing Breen-216.7a Griffee G73-5/2a G6. Much sharper with excellent detail, but the surfaces are dark olive and uniformly granular. A few tiny patches of greenish verdigris but no notable marks other than a curved planchet clip, as struck, at K-5 on the obverse. A new variety unknown to Breen. Just left of the King's knee pad is a large vertical "8" and just left of the base of the harp is an annulet. Unfortunately the clip took away the annulet and only the top of the "8" is visible, and that is faint due to the roughness. Other more subtle differences make the attribution certain, however. Three known, this being the weakest of the trio. Noyes photo #72521. Ex Jeff Rock 12/11/92-John Griffee. Comes with a signed Griffee envelope. Weight 65.5 grains.

009. (1672-75) Saint Patrick Farthing Breen-218.2 Griffee G81-2/0a F15. Sharper but slightly rough. No verdigris or marks other than crude reeding which was added around the edge. Attractive glossy light to medium brown with some darker olive brown in the most-protected areas. Coated with a very thin layer of lacquer or a similar protectant which makes the surfaces more glossy than normal. The legends are sharp. A decent example of the "martlet below king" type. Noyes photo #73815. Ex a London dealer in 1940-Whittle & Noble sale 11/2000:2815-Del Parker-John Griffee. Comes with a signed Griffee envelope. Weight 88.1 grains.



007. (1672-75) Saint Patrick Farthing Breen-216.11b Griffee G74-6/5a VG10. Glossy medium brown with the brass splasher quite large and bright. A choice example except for a counterstamp of "SS" in the center of the reverse (only 7 counterstamped examples of any variety are traced). Another new variety with an annulet and 8 below the king, plus two tricolons in the punctuation. Only 4 known, and the best is VF. Noyes photo #72126. Ex Jeff Rock 4/20/89-John Griffee. Comes with a signed Griffee envelope. Weight 87.9 grains.

010. (1672-75) Saint Patrick Farthing Breen-208.4 Griffee G102-4/0a VF35. White metal copy, although the word "copy" is not on the coin. Appears to be struck rather than cast. The details are clear and there are no notable marks. Slightly glossy light to medium gray. Noyes photo #72068. Ex Henry Garrett 7/6/94-Coleman Foster 7/27/94-John Griffee. Comes with a signed Griffee envelope. Weight 100.6 grains.



008. (1672-75) Saint Patrick Farthing Breen-217.2 Griffee G83-2/0a F15. Sharper with a dull dent in the center of the obverse and several other weaker ones in the center of the reverse. The highpoints are covered with fine hairline scratches, but they blend into the patina and do not detract much. Rather glossy dark olive brown with light brown highpoints, the contrast accenting the details. The legends are strong. This is the rare bird-8-annulet type. Twelve known, the two finest from the Norweb sale, lots 2330 and 2332. Noyes photo #72835. Ex Tom Rinaldo 11/5/99-John Griffee. Comes with a signed Griffee envelope. Weight 81.2 grains.

011. (1694) London Elephant Token Breen-186 G6. Sharpness F12 or so with a planchet fissure slanting across the elephant and a beveled planchet clip at the upper left of the shield side, as struck. A few light hairline scratches on both sides. Glossy chocolate and darker steel brown. The legends are clear. Weight 240.7 grains.

012. 1739-CC (Besancon mint) French Colonies Sou Marque Breen-636 VF20. Light to medium steel and gray with a dusting of greenish verdigris in protected areas. A small planchet crack in the rim at DO in DOM and a curved planchet clip affects the dentils just left of the date, as struck. The date and legends are strong. Called extremely rare by Breen. Weight 27.4 grains.

DOUBLE STRUCK 1773 BRITISH HALFPENNY



013. 1773 British Halfpenny VF30. Boldly double struck. The initial strike was properly centered while the second was about 30% off center to K-7.5. The initial date is faint and the second is strong. Smooth glossy dark chocolate brown. Weight 123.5 grains.

CHOICE OBERSE BROCKAGE
GEORGE III COUNTERFEIT



014. George III British Halfpenny (Counterfeit) Obverse Brockage EF45. Choice glossy medium brown with frosty light brown in protected areas. Struck slightly off center to K-8. Sharp and attractive. Weight 129.8 grains.

015. 1787 Machin's Mills Vlack 19-87c Rarity-2 VG8. Slightly sharper with some small, dull nicks on both sides, strongest in the left center of the reverse. Rather glossy medium brown and chocolate. The date and legends are complete. Weight 104.5 grains.



016. 1787 Connecticut Miller 4-L Rarity-1 VF25. Sharper but covered with uniform microscopic granularity covering the planchet and a couple small patches of light greenish verdigris on the reverse. No planchet flaws or contact marks. Dark chocolate and steel brown. Great detail. LDS with the "Horned Bust" break very strong. Weight 124.6 grains.



017. 1788 Connecticut Miller 11-G Rarity-2 VF25. Glossy chocolate with lighter steel brown highpoints. Reasonably smooth and free of marks or verdigris. The date is bold and legends clear. The reverse is rotated 60 degrees CCW from normal head-to-foot orientation. Weight 112.8 grains.

018. Pair of 1787 Connecticut Coppers. Miller 33.7-r.2 R1 F12. Nice glossy medium brown and chocolate. A couple small planchet fissures, otherwise choice. Weight 131.9 grains. Miller 37.13-HH R5 VG8. ETLIR variety. Attractive glossy medium brown and chocolate. Choice except for a tiny planchet fissure on the cheek and another in the field over the knee, as struck. Nice for the grade. Ex 1999 EAC, lot 14. Weight 129.4 grains. Lot of 2 coins.



019. 1788 Massachusetts Cent Ryder 3-A Rarity-3 VF20. Slightly sharper with microscopic porosity covering the planchet. No verdigris or marks. Slightly glossy medium brown and chocolate with olive brown in protected areas. Strong date and clear legends. Weight 169.8 grains. Ex Richard August 1/8/2000.



020. 1787 New Jersey Maris 48-g Rarity-1 VF30. Sharpness AU50 or better but uniformly granular. No verdigris or marks. Reddish chocolate brown and steel with some lighter brown shades on highpoints. Sharply struck EDS. Great detail. Weight 139.1 grains. Ex 1998 C-4 sale, lot 317.

021. Pair of 1787 New Jersey Coppers M43-d R1 VG10. Weight 153.3 grains. M63-q R1 G5. Large planchet type. Weight 132.7 grains. Both are slightly sharper with minor roughness. Lot of 2 coins.



022. 1786 Vermont Landscape Ryder-6 Rarity-2 VF20. Ten points sharper with small patches of very light greenish verdigris on both sides and very fine roughness covering most of the planchet. Slightly glossy chocolate brown. There are some shallow planchet fissures at the left edge of the obverse and opposing area on the reverse, but overall the planchet is not bad for a landscape type. LDS with a strong die crack up between the 7 & 8 in the date. Weight 120.4 grains. Ex 1999 C-4 sale, lot 318.



023. 1788 Vermont Ryder-25 Rarity-2+ F15. Rather glossy dark chocolate with lighter brown highpoints, the contrast accenting the details. No verdigris. A few faint hairlines on the portrait, otherwise nice for the grade. Weight 114.2 grains. Ex Bowers & Merena 11/29/01:2400.

024. 1787 Fugio Cent Newman 6-W.1 Rarity-5- G6. Sharpness F15 but covered with light to moderate corrosion. A few small spots of verdigris on the reverse. No notable contact marks. The date is clear and legends nearly complete. Dark olive and chocolate with lighter highpoints. LDS with a strong die crack through the link at K-7. Weight 123.1 grains.



025. 1794 Talbot Allum & Lee Cent Breen-1029 (with New York and large &) VF35. Choice glossy chocolate with lighter brown toning in protected areas. Very attractive, free of any marks or other defects. Struck medal turn, head-to-head. Usual lettered edge. Weight 151.3 grains. Ex Jack Beymer 3/98.

026. 1794 Talbot Allum & Lee Cent Breen-1032 (with New York and small &) F12. Slightly sharper but recolored glossy chocolate and steel brown with some underlying very faded red in protected areas. Struck medal turn. Usual lettered edge. Weight 150.8 grains.

027. 1785 Vermont Landscape Ryder-4 Cast Copy VF25. Rather glossy dark steel and chocolate.

028. 1787 New Jersey Maris-48-g Cast Copy VF25. Rather glossy medium brown and chocolate. Ex Heritage 9/2002:5028.

029. 1794 Talbot Allum & Lee Cent Breen-1032 (with New York and small &) Electrotyping Copy VF20. Sharper with wavy obverse fields. Medium brown.

HALF CENTS

Featuring The John Peters Collection

RARE 1794 C-2B LARGE EDGE LETTERS



030. 1794 C-2b R6 AG3. Large edge letters. Sharpness F12 but moderately corroded. No marks or verdigris. Slightly glossy dark steel and chocolate. The date and legends are mostly clear, but the fraction is weak. EDS, Manley state 1.0. Ex Mike Demling 4/99.



031. 1794 C-3a R5 G4. Small edge letters. Several points sharper with two dull punchmarks in the center of the obverse, the one on the left strong enough to create a bulge over E in CENT. A few short scratches at the dentils left of the lower curls and a dull rim nick right of Y. Glossy chocolate and steel brown, possibly retoned but the color is attractive. The date and legends are clear. EDS, Manley state 1.0, the reverse rotated 60 degrees CW.



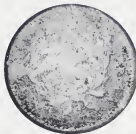
032. 1794 C-6a R5+ G5. Small edge letters. A couple points sharper and a couple dull dents at the forehead causing a bulge at the wreath under ICA. Otherwise the surfaces are smooth and attractive. Glossy medium brown and chocolate. The date and legends are clear.



033. 1794 C-6a R5+ AG3. Small edge letters. Sharpness F15 but moderately corroded. No verdigris or marks. Slightly glossy chocolate and dark steel brown. The date and legends are mostly clear, but portions are weak due to the roughness. Ex McCawley & Grellman Auctions 8/19/95:7-Steve Ellsworth collection.



034. 1794 C-6a R5+ Fair-2+. Small edge letters. The obverse is slightly better while the reverse is weaker. No marks or other notable defects, just honest wear. Rather glossy chocolate with darker steel in protected areas. The upper two-thirds of the date is clear and about half the legends remain visible. Ex Don Valenziano 1989-Wally Gilligan, Bowers & Merena 5/27/94:8.



035. 1794 C-7 R5+ G4. The obverse is VG8 with some microscopic pits in the fields. The reverse is weaker, perhaps AG3. A small, dull rim nick at the second A in AMERICA is the only notable mark on the reverse. Chocolate brown with darker olive brown in protected areas, the obverse surfaces nicely glossy and the reverse closer to matte. Date and LIBERTY are bold. LDS.

039. 1797 C-3a R3 VG8. Plain edge. Struck over spoiled large cent. A couple points sharper with some faint hairline scratches on each side, none notable or at all distracting. A trio of tiny nicks across the bust and pole and a small rim nick at NI in UNITED are the notable marks. Nice glossy chocolate brown with lighter brown in protected areas. LDS. Manley state 3.0. The date is strong and legends complete. Struck over a cut-down spoiled large cent planchet. An arc of dentils from the undertype cent shows on the neck and even stronger ones show on the right center portion of the reverse. Weight 80.0 grains.



036. 1795 C-2a R3 VG10. Thick planchet with lettered edge. A couple points sharper but lightly cleaned, now retoned a glossy chocolate and steel brown with frosty golden light brown in protected areas. Otherwise the planchet and surfaces are choice. LDS. Manley state 3.0. Weight 109.2 grains. Sharp and attractive for the grade in spite of the recoloring. Ex Gordon Berg 1/88.

040. 1797 C-3b R4 G6. Lettered Edge. Sharpness VF20 but dented and slightly bent, the planchet a bit wavy as a result. The notable marks are a long, dull rim bruise left of the cap, a group of dull marks over STA, and a dull pinch on the rim over ITED. Nice glossy medium brown and chocolate, the color and surfaces much nicer than you would expect given the marks. The date is bold and legends clear. The edge lettering is strong, although portions of the letters do not show, as usual, due to the thin planchet. MDS, Manley state 2.0.



037. 1795 C-3 R5+ Fair-2. Several points sharper but banged up a bit, including three small, dull dents across the obverse and a larger dent that distorts the rim on the right side of the obverse. Rather glossy medium brown and chocolate. Everything is clear except HALF CENT. MDS, Manley state 2.0. Ex J. R. Frankenfield, Superior 2/17/01:28.

041. 1800 C-1 R2 VF35+. Glossy medium olive brown and chocolate. The only marks are two tiny rim nicks over the E in STATES. A choice example, close to EF40. MDS, Manley state 3.0. The rim cud breaks over LIB are clear. Ex Jonathan Kern.

038. 1795 C-5b R4 Fair-2. Thick planchet. A couple points sharper with some small nicks on both sides and a dull dent on the dentils over LIB. Rather glossy medium brown. The date is virtually gone but most of the legend remains visible. There is a curved planchet clip left of the date and over TES. Weight 101.0 grains.



042. 1800 C-1 R2 VF35. Ten points sharper but recolored glossy medium olive brown and chocolate with traces of faded red in protected areas. The reverse has some very tiny ticks. MDS, Manley state 3.0. The rim cuds over LIB are clear

MINT STATE 1800 C-1



043. 1800 C-1 R2 MS60+. Lustrous bluish steel brown with underlying faded mint red in protected areas, at least 10% of the surface showing some of the mint color. Frosty and very attractive. The best identifying mark is a small rim nick over F in OF and a short hairline scratch just right of that letter. MDS, Manley state 3.0. The rim cud breaks over LIB are strong. Very attractive, close to choice. Ex John Peters.



044. 1800 C-1 R2 VF25. Slightly sharper but lightly cleaned, now retoned glossy chocolate and steel brown. No marks or roughness. M-LDS, Manley state 4.0.



045. 1802/0 C-2 3 G6. Overdate 2 over 0. Slightly sharper with a dull dig left of L and some faint hairline scratches well hidden under a glossy dark olive and chocolate brown patina. E-MDS, Manley state 2.0. The overdate is clear.

046. 1803 C-1 R1 F15. Ten points sharper with too many small nicks for the sharpness, plus a small spot of greenish verdigris just right of the T in CENT. Glossy medium brown and chocolate. Sharp EDS, Manley state 1.0. The reverse is rotated 20 degrees CCW.

047. 1803 C-1 R1 F12. Slightly sharper with two short hairline scratches under the ear. Glossy chocolate brown. E-MDS, the reverse rotated 15 degrees CCW.



048. 1803 C-1 R1 VF20. Sharpness VF35 but lightly whizzed, now retoned glossy dark steel brown and chocolate with some frosty light brown in protected areas. No spots or other marks. Nice eye appeal in spite of the cleaning. MDS, Manley state 2.0. The reverse is not rotated.

049. 1803 C-1 R1 F15. Glossy chocolate with olive brown toning in protected areas. A tiny rim bruise under the fraction, otherwise nearly choice. MDS, Manley state 2.0, the reverse rotated 20 degrees CCW.



050. 1803 C-1 R1 VF20. Glossy chocolate brown with frosty lighter brown in protected areas. Choice surfaces, free of marks. LDS, Manley state 3.0. The reverse is rotated 15 degrees CW.

051. 1803 C-1 R1 F12. Slightly sharper but lightly cleaned, now nicely retoned a glossy chocolate brown. A couple tiny nicks, none notable. LDS, Manley state 3.0, the reverse now rotated 35 degrees CW.

052. Group of 4 half cents. 1803 C-1 G4. EDS, Manley state 1.0. 1804 C-5 AG3. 1804 C-8 AG3+. 1804 C-9 AG3. M-LDS, Manley state 4.0. The last is sharper with dents. Lot of 4 coins.

053. Group of 4 half cents. 1803 C-1 G5. EDS, Manley state 1.0. 1804 C-9 G5. E-MDS, Manley state 2.0. 1805 C-4 G4. 1808 C-3 G5. MDS, Manley state 3.0 late, the reverse rotated 10 degrees CW. Lot of 4 decent but well-worn coins.

054. Group of 4 half cents. 1803 C-1 G4. MDS, Manley state 2.0. 1803 C-4 G6. The reverse is rotated 15 degrees CW. 1804 C-1 G5. LDS, Manley state 2.0 late. 1804 C-5 G5. MDS, Manley state 4.0. A couple are slightly sharper with minor defects. Lot of 4 coins.



055. 1803 C-2 R4 VG10. A few points sharper with a small patch of reddish olive verdigris in the field under the chin. Otherwise a decent glossy olive brown with medium brown highpoints. E-MDS, Manley state 3.0.



056. 1803 C-2 R4 VG8. A couple points sharper with a patch of microscopic roughness in the field before the face. Glossy bluish steel brown with chocolate brown highpoints. MDS, Manley state 3.0.

057. 1803 C-2 R4 AG3. Sharpness VG7 but granular. No marks or verdigris. Light steel brown highpoints with dark steel brown in protected areas. The date and legends are clear. MDS.



058. 1803 C-3 R2 VF30. Glossy chocolate and steel brown gently mottled with some underlying frosty lighter brown on the obverse. Two thin, light nicks just under the jawline the only defects. MDS, Manley state 3.0, the reverse rotated 20 degrees CW.



059. 1803 C-3 R2 VF35. Nice glossy chocolate brown with some frosty luster remaining in protected areas of the reverse. No defects. M-LDS, Manley state 4.0, the reverse rotated 10 degrees CCW.

060. 1803 C-3 R2 VF20. Glossy dark chocolate and lighter steel brown. Some microscopic roughness and faint hairlines on the portrait, none visible without a strong glass. M-LDS, Manley state 4.0, the reverse rotated 20 degrees CW. Removed from an NGC slab graded VF30 (NGC label included).



061. 1803 C-4 R4 VF30. Ten points sharper with some faint hairlines on the portrait and a few light contact marks elsewhere on both sides. Glossy chocolate and steel brown. Sharply struck, the reverse rotated 5 degrees CW.



062. 1803 C-4 R4 F15. Glossy light steel brown and chocolate with frosty lighter brown in protected areas of the obverse. No notable defects. The reverse rotated 15 degrees CW.

063. 1803 C-4 R4 VG10. Five points sharper with some fine hairline scratches on the portrait. Lightly cleaned, now nicely retoned glossy steel brown. Reverse rotated 10 degrees CW.

064. 1803 C-4 R4 VG10. Glossy medium brown with steel brown highpoints on the reverse. A short, light hairline scratch through AL in HALF, otherwise choice for the grade. The reverse is rotated 170 degrees CCW. Removed from an NGC slab graded F15 (NGC label included).

065. Pair of half cents. 1803 C-4 R4 G5. The reverse rotated 5 degrees CW. 1804 C-1 R3 F12. Sharpness VF35 but dull and covered with microscopic roughness. EDS, Manley state 1.0. Lot of 2 coins.

066. 1804 C-1 R3 F12. Sharpness VF20 but covered with faint hairline scratches. Slightly glossy dark olive and steel brown. EDS, Manley state 1.0.

067. 1804 C-1 R3 F12. Sharpness VF25 or slightly better with a dull but strong pinch on the rim under the 1 in the date and opposing area over the A in STATES. Otherwise very nice, nearly choice. Glossy chocolate brown. EDS, Manley state 1.0.

068. 1804 C-1 R3 VG10. Five points sharper but cleaned, now retoned glossy reddish chocolate brown. A light rim bruise above the bust tip. EDS Manley state 1.0.

069. 1804 C-1 R3 F12. Glossy medium brown, the obverse mottled with darker steel brown. A tiny rim bruise at D. MDS, Manley state 2.0.



071. 1804 C-1 R3 VF35. Slightly sharper with three short, light scratches in the field left of the bottom of the hair ribbon. Glossy dark chocolate brown with frosty tan and light steel brown in protected areas. M-LDS, Manley state 2.0.



072. 1804 C-1 R3 VF30. Ten points sharper with microscopic ticks scattered about the obverse, none notable but too many for the sharpness grade. Glossy dark chocolate and steel brown with frosty lighter steel brown in some protected areas. M-LDS, Manley state 2.0.

073. 1804 C-1 R3 VF20. Slightly sharper with a rim bruise above the bust tip and some tiny ticks scattered about both sides. Glossy chocolate brown. LDS, Manley state 2.0.

074. 1804 C-1 R3 F15. Clipped planchet. Sharpness EF40 but dark with microscopic porosity and specks of verdigris covering much of the planchet. Ark chocolate and steel brown. LDS, Manley state 2.0. A small planchet clip affects the dentils over E in LIBERTY and the opposing ones right of the fraction.

075. 1804 C-1 R3 G5. A couple points sharper with many rim bruises, none particularly strong but most of the edge is affected to some degree. Glossy dark bluish steel brown, possibly retoned. LDS, Manley state 2.0 late. The failure at ES-O is severe.

076. Trio of 1804 half cents. C-1 VG8. MDS, Manley state 1.0. C-9 VG7. M-LDS, Manley state 4.0. C-12 VG7. LDS, A couple are slightly sharper with minor defects. Lot of 3 coin



070. 1804 C-1 R3 EF40. Glossy steel brown with frosty light brown in protected areas, especially on the reverse. A faint hairline across the chin and another under LI into the field at left, neither visible without a good glass. An attractive example, near the lower end of the condition census. M-LDS, Manley state 4.0. Ex Superior 10/2000:1079.

STORIED 1804 C-2



077. 1804 C-2 R6+ Fair-2. Glossy dark chocolate and steel brown. The upper right half of the obverse is a couple points nicer, as is the right half of the reverse, but the opposite areas are weaker. A large script "W" was added to the obverse using many carefully aligned digs. A hairline scratch was also added just right of the right side of the W. Otherwise the planchet and surfaces are smooth and free of marks, just well worn. The date is virtually gone, just a hint of the tops of the 04, and it takes some imagination to see them. BERTY is clear, and two-thirds of the reverse remains visible. MDS, Manley state 2.0 late, with a strong die crack connecting the tops of ERTY to the rim, and the area outlined by the crack is slightly sunken into a retained cud. The reverse is rotated 30 degrees CW. The attribution points are clear in spite of the low grade. This is the piece discovered by Jon Lusk at an antiques store in Adamstown, Pennsylvania, and purchased for 25 cents. See the story of this discovery in the November 2002 issue of Penny-Wise.



078. 1804 C-4 R5 G6. Sharpness F15 with patches of fine to moderate porosity on both sides, strongest in the field over the bust tip. There is a collection of light hairline scratches in the field behind the head and small spots of reddish verdigris in protected areas. The date is strong and legends clear. Slightly glossy steel brown with darker olive brown in protected areas of the reverse. EDS, Manley state 1.0. Ex McCawley & Grellman Auctions 1/11/97:144.

079. 1804 C-4 R5 AG3. Sharpness VG8 but granular, strongest on the portrait. No marks or verdigris. Dull steel brown and olive with some lighter brown highpoints. Date and legends all clear. MDS, Manley state 2.0.

080. 1804 C-5 R4 F12. Spiked Chin. Slightly sharper with some dull nicks or tiny digs on the obverse, strongest at the rim above the bust tip and at the 0 in the date. Nice smooth glossy steel brown and chocolate. MDS, Manley state 4.0.



081. 1804 C-5 R4 VF25+. Spiked Chin. Slightly sharper with a thin nick in the field close before the neck and a dull rim nick over E in LIBERTY. Otherwise a nice VF30. Glossy chocolate brown. M-LDS, Manley state 5.0. Ex Roger S. Cohen, Jr., Superior 2/2/92:152.

082. 1804 C-5 R4 F15+. Spiked Chin. Ten points sharper with a shallow but fresh dig on the bottom of the 0 in the date, plus a couple smaller ones at the rim left of the L in LIBERTY. Nice glossy chocolate brown except for bright coppery toning in the dig on the 0. M-LDS, Manley state 5.0.

083. 1804 C-5 R4 VG10. Spiked Chin. Close to F12 but there are too many tiny nicks on both sides for that grade. Glossy chocolate brown. M-LDS, Manley state 5.0.

084. 1804 C-5 R4 G5. Spiked Chin. Glossy olive brown and chocolate, possibly retoned but smooth and attractive for the grade. A small, shallow dig between the D & S is the notable mark. Very rare terminal die state. Manley state 6.0, with severe die failure at the right top of the reverse.

085. Group of 4 half cents. 1804 C-5 F12. Spiked chin. MDS, Manley state 4.0. 1804 C-9 G6. E-MDS, Manley state 2.0. 1804 C-12 G6. MDS. 1805 C-4 G6. The first and last are much sharper with significant defects.



086. 1804 C-6 R2 EF40. Spiked Chin. Attractive glossy dark chocolate brown with frosty lighter steel brown in protected areas of the reverse. The only mark is a dull nick high on the neck. EDS, Manley state 1.0, Braig 1.0. An attractive early example of this popular variety.



087. 1804 C-6 R2 VF30. Spiked Chin. Glossy chocolate and steel brown with frosty tan in protected areas of the reverse. Some tiny nicks scattered about the obverse, none notable or at all distracting. EDS, Manley state 1.0, Braig 1.2.

088. 1804 C-6 R2 F12. Spiked Chin. A few points sharper with a couple fine hairlines scratches in the obverse fields. Glossy dark bluish steel brown. EDS, Manley state 1.0, Braig 1.2.



089. 1804 C-6 R2 VF25. Spiked Chin. Glossy chocolate brown. A spot of darker olive toning on the neck and a dull rim nick at the second T in STATES are the notable marks. E-MDS, Manley state 2.2 late, Braig 1.5.

090. 1804 C-6 R2 VF20. Spiked Chin. Glossy medium brown and chocolate. A faint hairline low on the neck and another over the date. Nice eye appeal for the grade. E-MDS, Manley state 2.2, Braig 1.5.

091. 1804 C-6 R2 VG10. Spiked Chin. Five points sharper with a light hairline scratch from under the ear to the rim left of the ribbon. Glossy reddish brown. E-MDS, Manley state 2.5, Braig 1.8.

RARE DIE STATE 1804 C-6
MANLEY STATE 4.5



092. 1804 C-6 R2 VF35. Spiked Chin. Slightly sharper with a small spot of reddish verdigris hidden in the curl left of the shoulder and another at the dentils off the bust tip. Otherwise an attractive glossy chocolate brown. MDS, Manley state 4.5, Braig 2.9. A nice example of this rare die state.

093. 1804 C-6 R2 VF25. Spiked Chin. Ten points sharper but recolored glossy medium brown. A small rim bruise above the bust tip and an even smaller one at U in UNITED. M-LDS, Manley state 8.0, Braig 5.5.



094. 1804 C-6 R2 VF25. Spiked Chin. Glossy dark steel brown and olive. A couple tiny, thin nicks at the eye and a faint hairline scratch on the cud break over E in AMERICA. M-LDS, Manley state 9.0, Braig 6.0. Ex Bowers & Merena 10/26/00:54

095. 1804 C-6 R2 VF25. Spiked Chin. Slightly sharper with microscopic roughness covering the obverse. A small dig at the dentils right of Y the only mark. Rather glossy dark olive and steel brown. M-LDS, Manley state 9.0, Braig 6.0.

096. 1804 C-6 R2 VF25. Spiked Chin. Ten points sharper with some tiny nicks scattered about the obverse and a shallow void on the rim opposite the eye, probably as struck. Glossy medium steel brown. M-LDS, Manley state 9.0, Braig 6.0.

097. 1804 C-6 R2 F15. Spiked Chin. Sharpness VF25 but lightly burnished, now retined a glossy chocolate and lighter steel brown. A pin scratch at S-O is the notable mark. M-LDS, Manley state 9.0, Braig 6.0.

098. 1804 C-6 R2 F12. Spiked Chin. A few points sharper but someone added tiny needs to the edge. Glossy chocolate with lighter brown in protected areas. M-LDS Manley state 9.0, Braig 6.0.



099. 1804 C-6 R2 EF40. Spiked Chin. Slightly sharper with a dull, faint scratch in the field right of the chin. Glossy steel brown with frosty tan and light brown covering the protected areas and a splash of darker olive toning at the dentils left of the lower curls. LDS, Manley state 11.0, Braig 8.0.

100. 1804 C-6 R2 F12. Spiked Chin. A few points sharper with very faint hairlines on the portrait. Glossy steel brown with frosty tan in protected areas. LDS, Manley state 11.0, Braig 8.0.

101. Group of four different 1804 C-6 die states. E-MDS, Manley state 2.2, Braig 1.5. G5. Sharper but banged up a bit. MDS, Manley 7.0, Braig 5.0. G5. M-LDS, Manley state 9.5, Braig 6.5. VG8. LDS, Manley state 11.0, Braig 8.0. VG8. Lot of 4 examples that cover the broad spectrum of die states.



102. 1804 C-7 R4 F15+. Spiked Chin. Sharpness VF30 but covered with tiny contact marks, none distracting but far too many for the sharpness grade. A fine hairline scratch slanting down in the field under the ribbon end is the best identifying mark. Rather glossy chocolate and darker steel brown. MDS, Manley state 4.0. A decent example of this very rare die state. Ex John Peters.



103. 1804 C-7 R4 VF25. Spiked Chin. Glossy dark bluish steel brown and chocolate. Smooth and attractive, the only notable mark a light hairline scratch above ER in AMERICA. MDS, Manley state 5.0, with a large cud break at OF-A. An attractive example of this very rare die state. Ex John Peters.



104. 1804 C-8 R1 VF20. Spiked Chin. Glossy medium brown and chocolate. A long, very thin nick hidden in the hair left of the forehead and a couple tiny planchet chips in the drapery over the 4. Coated with a thin layer of Care which adds a high gloss. Would probably rate a slightly higher grade if the coating and underlying light dirt were removed. Rare EDS, Manley state 1.0, before the crack at R in AMERICA.



105. 1804 C-8 R1 EF45. Spiked Chin. Glossy steel brown and chocolate with lustrous lighter steel brown and tan faded down from mint color in protected areas. No defects. Sharp and attractive. E-MDS, Manley state 2.0 early.

106. 1804 C-8 R1 VF35. Spiked Chin. Glossy steel brown with lots of frosty tan in protected areas, especially on the reverse. A small spot of darker olive brown toning at the dentils right of Y and another left of the L are the only marks. E-MDS, Manley state 2.0 late.

107. 1804 C-8 R1 VF35. Spiked Chin. Glossy chocolate and steel brown. A faint dull hairline under the curl on the neck is the only defect. MDS, Manley state 3.0.

108. 1804 C-8 R1 F12. Spiked Chin. Slightly sharper but lightly cleaned, now nicely retoned a glossy medium brown and chocolate. The only marks are a tiny rim nick at L & T in LIBERTY and another at E in STATES. M-LDS Manley state 5.0.

109. 1804 C-8 R1 VF30+. Spiked Chin. Glossy steel brown and chocolate with some frosty lighter brown in protected areas of the reverse. A couple tiny, very light rim nicks at ERTY and a stronger one off the bust tip. LDS, Manley state 6.0, with a raised retained cud break over ERTY.

110. Trio of 1804 C-8 die states, all net VG10. MDS, Manley state 3.0 early. MDS, Manley state 3.0 late. M-LDS, Manley state 5.0. All are slightly sharper with minor defects. Lot of 3 coins.



111. 1804 C-9 R2 EF45. Glossy chocolate brown gently mottled with some lighter and darker shades of brown. No marks. E-MDS, Manley state 2.0.

112. 1804 C-9 R2 VF20+. Glossy medium brown and chocolate. No notable marks. E-MDS, Manley state 2.0.

113. 1804 C-9 R2 VF20. Ten points sharper with some very faint hairlines on the obverse and traces of extremely fine roughness on both sides. No verdigris or distracting marks. M-LDS, Manley state 4.0, with a strong cud break over RTY.



114. 1804 C-9 R2 EF40. Ten points sharper but lightly cleaned, now retoned frosty faded red with steel brown highpoints. Has the look of a red & brown mint state example. A short, light hairline scratch left from the lowest curl is the only mark. LDS, Manley state 5.0 early. The cud over RTY is strong and the crack through the bust tip is faint.

115. 1804 C-10 R1 VF35. Glossy tan and light brown. A small carbon spot in the field left of the hair ribbon is the only defect. MDS, Manley state 2.0 late, with the reverse rotated 35 degrees CCW.



116. 1804 C-10 R1 EF40. Ten points sharper but lightly cleaned, now retoned glossy light olive and bluish steel brown with some underlying very faded red in protected areas. A faint hairline from the chin into the field and a small, light rim nick at T in UNITED. LDS, Manley state 3.0.

117. 1804 C-10 R1 VF20. Glossy dark bluish steel brown, the reverse mottled with medium brown. A fine planchet lamination in the dentils over ES-O is the only notable defect, as struck. LDS, Manley state 3.0. Ex 1992 EAC sale, lot 14.



118. 1804 C-11 R2 VF30. Plain 4 with Stems. Slightly sharper with a few too many light contact marks for the higher grade. The notable mark is a fine hairline scratch from the Y down to the dentils opposite the mouth. Glossy chocolate brown with frosty light brown in protected areas and reddish brown toning at RICA. MDS, Manley state 2.0.

119. 1804 C-11 R2 G5. Plain 4 with Stems. Slightly sharper with a trio of fine hairline scratches down inside the wreath. Dark steel brown and olive with the highpoints rubbed to a lighter tone. The surfaces are covered with extremely fine roughness but are free of verdigris. LDS, Manley state 3.0.

120. 1804 C-12 R2 VF25. Crosslet 4 without Stems. Glossy steel brown and chocolate. An extremely faint hairline in the field off the chin and traces of lightly colored dirt in protected areas of the reverse. EDS.



121. 1804 C-12 R2 EF40. Crosslet 4 without Stems. Glossy steel brown and chocolate with frosty golden tan faded down from mint color in protected areas. Two small spots of darker olive toning in the field under the hair ribbon and a small, light rim bruise at D in UNITED. MDS.

122. 1804 C-12 R2 VF20. Crosslet 4 without Stems. Glossy dark chocolate brown with lighter chocolate highpoints. MDS.



123. 1804 C-13 R1 EF45+. Plain 4 without Stems. Glossy dark chocolate brown with choice, mark-free surfaces. Close to AU50. MDS, Manley state 2.0.



124. 1804 C-13 R1 EF40+. Plain 4 without Stems. Sharpness near mint state but cleaned, now a frosty golden tan with artificial faded red on the cheek where there is a small patch of microscopic roughness. Would benefit if recolored to a more natural tone. MDS, Manley state 2.0.

125. 1804 C-13 R1 VF25. Plain 4 without Stems. Clipped planchet. Sharpness EF40 with a dusting of fine carbon in the left obverse field and on the lower portion of the reverse. Glossy steel brown and chocolate with frosty tan in protected areas, but the rough areas are dull and a darker shade of olive brown. A curved planchet clip affects the dentils over RT in LIBERTY and the second A in AMERICA. LDS, Manley state 3.0.



126. 1805 C-1 R2- VF35. Stemless Wreath. Sharper by 10 points but covered with microscopic hairline scratches. Frosty steel brown and chocolate. EDS, Manley state 1.0.



127. 1805 C-1 R2- EF40. Stemless Wreath. Slightly sharper but lightly cleaned, now retoned a glossy medium olive and steel brown. Smooth and free of marks. Excellent eye appeal in spite of the retoning. MDS, Manley state 2.0. The rim cuds at MERICA are clear.

128. 1805 C-1 R2- VF30. Stemless Wreath. Ten points sharper but recolored glossy bluish steel brown and chocolate with frosty golden tan in protected areas of the reverse. A dull, faint struck-through line gently arcs through the left obverse field from the lower curls to the L, as struck. MDS, Manley state 2.0.

129. Pair of 1805 half cents. C-1 F12. Sharpness EF40 but dark with some areas of light corrosion. MDS, Manley state 2.0. C-4 VG10. Glossy dark steel brown, MDS, Manley state 1.0. Lot of 2 coins.

130. Pair of half cents. 1805 C-1 VG10. A small, mint-made planchet clip affects the dentils opposite the neck and over ME. 1828 C-2 VG7. 12-star obverse. Both nice glossy chocolate brown. Lot of 2 coins.



131. 1805 C-2 R5 G5. Small 5 with Stems. A couple points sharper but burnished, now retoned a natural-appearing glossy chocolate brown with some darker olive brown toning in protected areas of the reverse. The date and legends are strong except for HALF CENT, which is visible but weak. The wavy surface has the look of a piece that was slightly bent, then straightened. Not as bad as it might sound, especially for this rare variety, the rarest of the year. Ex Michael Hartshorne 11/18/01.



132. 1805 C-3 R4 G6. Small 5 with Stems. A couple points sharper with microscopic roughness under a relatively glossy dark olive brown patina. The highpoints are a lighter shade of steel brown. A tiny rim nick opposite the bust tip and a barely visible rim bruise at CA. E-MDS, Manley state 1.0 late. The date is strong and legends clear, except for the usual weakness on HA and CE. The field before the face is just starting to show some swelling.



133. 1805 C-3 R4 G4. Small 5 with Stems. Very slightly sharper but the obverse is covered with microscopic hairlines and there is a small patch of very fine porosity at the dentils left of the lowest curl. Otherwise the planchet and surfaces are decent for the grade, just some trivial marks and roughness. The date is strong and legends mostly clear, although HAL and CEN are weak, as usual. Slightly glossy dark steel brown and chocolate. Decent for the grade. LDS, Manley state 2.0. The field before the portrait is heavily swollen.



134. 1805 C-4 R2- VF30. Large 5. Slightly sharper with a couple faint hairlines on the cheek and neck and a barely visible rim bruise right of the date. Glossy dark steel brown with frosty lighter brown in protected areas and hints of very faded mint color in a few of these lighter-toned areas. MDS, Manley state 1.0.

135. 1805 C-4 R2- F12. Large 5. A couple points sharper with some hairlines in the field above the bust. Rather glossy chocolate and steel brown. MDS, Manley state 1.0.



136. 1805 C-4 R2- VF25. Large 5. Double Struck. Ten points sharper with a few too many light contact marks for the sharpness grade, including a small vertical nick in the field close before the nose tip and a tiny rim bruise at D in UNITED. Double struck, although the offset between the two strikes is less than a millimeter. The doubling is strongest on the lower half of the obverse and on the wreath. M-LDS, Manley state 2.0.



137. 1805 C-4 R2- VF30. Large 5. Glossy chocolate brown. No defects. LDS, Manley state 2.0.

1806 C-1 COHEN PLATE COIN

138. 1806 C-1 R1 AU50. Small 6 without Stems. Mint state sharpness but lightly whizzed, now retoned a lustrous light bluish steel brown with hints of underlying very faded red on both sides. No spots or marks. The cartwheel luster is outstanding (thanks to the whizzing), and the eye appeal is excellent. MDS with the reverse rotated 10 degrees CCW. This is the plate coin for the variety in the second edition of Roger Cohen's book. Ex Bill Weber, Superior 6/3/02:2332.



139. 1806 C-1 R1 EF45. Small 6 without Stems. Slightly sharper with too many microscopic contact marks, mostly around the throat and RTY, but it takes a good glass to see them. Frosty light brown and tan with steel brown highpoints. MDS, the reverse rotated 25 degrees CCW.

140. 1806 C-1 R1 VF20. Small 6 without Stems. Slightly sharper with a nick at RT in LIBERTY and another in the hair left of the throat. Glossy medium brown and chocolate. MDS, the reverse not rotated.



141. 1806 C-1 R1 VF35. Small 6 without Stems. Ten points sharper with a couple faint hairlines on the obverse, the strongest slanting down across the cheek. Glossy chocolate brown with traces of frosty golden tan in protected areas. MDS, the reverse not rotated.



142. 1806 C-1 R1 EF40. Small 6 without Stems. Glossy chocolate brown with frosty lighter steel brown toning in protected areas. A splash of darker olive toning at the dentils right of the chin and another over the E in CENT. MDS, the reverse rotated 35 degrees CW.

143. 1806 C-2 R4 G4. Small 6 with Stems. Several points sharper but the obverse is covered with small digs, the reverse less so. Otherwise the planchet and surfaces are very nice, free of any hint of corrosion. Glossy medium chocolate brown. The date and legends are all strong. MDS, Manley state 2.0.



144. 1806 C-4 R1 EF45. Large 6. Slightly sharper with a pair of light pinscratches in the field close over the hair ribbon and a dull nick over the E in CENT. Otherwise very nice. Glossy tan and light brown with steel brown highpoints and a spot of darker olive toning on the numerator of the fraction and frosty luster covering the protected areas. E-MDS, Manley state 1.0. The reverse is rotated 70 degrees CW. The bust tip is fully struck but the leaves under ERI are weak.

145. 1806 C-4 R1 VF35. Large 6. Ten points sharper but lightly burnished, now retoned glossy bluish steel brown with a small spot of darker olive toning between the bust tip and the dentils. E-MDS, Manley state 1.0. The reverse is rotated 45 degrees CW. The bust tip is not fully struck, with similar weakness in the leaves under TATE and RIC.



146. 1806 C-4 R1 AU50. Large 6. Sharpness very near mint state with some faint pinscratches at the F in OF and above that O where a reddish olive spot was "improved." Otherwise the surfaces are very nice, free of notable defects. Frosty light brown with steel brown highpoints and hints of faded mint color in protected areas. LDS. Manley state 2.0. Typical strike weakness at the bust tip and on the leaves at the top of the wreath and under ICA. The reverse is rotated 20 degrees CW.

147. 1807 C-1 R1 VG10. Glossy chocolate brown. A rim bruise left of the fraction, otherwise nice for the grade. EDS. Manley state 1.0.

148. 1807 C-1 R1 F15. Ten points sharper with some rim nicks on the right side of the obverse and over TATES. Otherwise free of defects. Glossy medium brown mottled with some darker chocolate brown tones. MDS. Manley state 2.0, the reverse rotated 15 degrees CCW.

149. 1807 C-1 R1 VF20. Slightly sharper with some faint hairlines on the highpoints of the obverse. Glossy dark chocolate brown with lighter chocolate tones in protected areas of the reverse. M-LDS. Manley state 3.0, the reverse rotated 10 degrees CW.

150. 1807 C-1 R1 VF20. Slightly sharper with traces of extremely fine roughness on the obverse. No marks or other defects. Glossy dark steel brown and chocolate. LDS, Manley state 3.0, the reverse unrotated.

EARLY DIE STATE 1808/7 C-2



151. 1808/7 C-2 R3 VF35. Overdate 8 over 7. Ten points sharper with a shallow dig in the field close before the neck, a half dozen microscopic pitmarks under the lowest curl, and a few more around TES. Slightly glossy bluish steel brown and chocolate. There is some crud caked into protected areas of the reverse, but I suspect this stuff could be melted away with the proper solvent without harming the color. Sharp EDS. Manley state 1.0, the overdate clear. Ex Superior 9/29/86:3027-John Peters.

The 2003 EAC Convention Sale, April 26, 2003



152. 1808/7 C-2 R3 VG7. Overdate 8 over 7. Glossy chocolate brown. A few faint hairlines on the portrait and other light contact marks consistent with the grade. EDS, Manley state 1.0. The overdate is clear. Ex 1986 EAC sale, lot 72.

153. 1808/7 C-2 R3 Fair-2. Overdate 8 over 7. Rather glossy dark steel brown. No significant defects, just lots of wear. The right half of the date is reasonably clear and at least half the legend is still visible, although much is weak. EDS, Manley state 1.0 or 2.0.

154. 1808 C-3 R1 VF20. Sharpness EF45 but the reverse is covered with fine porosity and has some specks of greenish verdigris in protected areas. The obverse is much nicer but does show microscopic porosity and a few small pitmarks. Reddish chocolate brown, the obverse slightly glossy and the reverse matte. Sharp EDS, Manley state 1.0. The reverse is rotated 160 degrees CW.



155. 1808 C-3 R1 VF30. Glossy medium brown mottled with some darker chocolate brown tones on the obverse. A light nick under the lowest curl and a couple very faint hairlines in the hair under BER. MDS, Manley state 3.0 early, the reverse rotated 60 degrees CCW.

156. 1808 C-3 R1 F15. Glossy dark steel brown. Smooth and problem-free. LDS, Manley state 5.0, the reverse 30 degrees CW.

157. 1809 C-2 R3 VF20. Slightly sharper with some extremely fine roughness under a rather glossy dark olive and steel brown patina. A tiny planchet chip close over the nose tip is the notable mark. LDS, Manley state 4.0.

158. Trio of 1809 die varieties. C-2 VG8. M-LDS, Manley state 3.0. C-3 F12. MDS, Manley state 1.0, the reverse 30 degrees CCW. C-5 VG10. MDS, Manley state 2.0, the reverse not rotated. A decent group, all glossy chocolate brown.

159. Trio of 1809 die varieties. C-2 G5. M-LDS, Manley state 3.0. C-4 VG8. M-LDS, the reverse 15 degrees CW. C-5 VG10. LDS, Manley state 3.0, the reverse slightly CW. All glossy brown or chocolate, the last recolored. Lot of 3 coins.

160. 1809 C-3 R1 EF40. Glossy dark steel brown with frosty tan in protected areas. A tiny planchet lamination at the dentils above the head. MDS, Manley state 1.0, the reverse 30 degrees CCW.

161. 1809 C-3 R1 VF30. Ten points sharper but lightly burnished, now retoned glossy dark bluish steel brown and chocolate. No spots or contact marks. MDS, Manley state 1.0, the reverse 40 degrees CCW.

162. 1809 C-3 R1 VF25. Glossy chocolate brown. No notable defects. M-LDS, Manley state 1.0 late, the reverse 30 degrees CCW.



163. 1809 C-4 R2 VF35. Circle inside 0. Slightly sharper with faint hairlines on the highest points of the obverse and a tiny hairline scratch under star 12. Frosty tan with glossy darker steel brown toning on the highpoints. Sharp EDS, Manley state 1.0, the circle inside the 0 crisp and the reverse rotated 10 degrees CW.



164. 1809 C-5 R1 EF45. Overdate 9 over 6. Glossy chocolate brown with frosty lighter steel brown in protected areas. A nice example. E-MDS, Manley state 1.0, the reverse slightly CCW. The overdate is clear.



165. 1809 C-5 R1 EF40+. Overdate 9 over 6. The obverse is glossy chocolate and steel brown with frosty tan in protected areas. The reverse is frosty tan with steel brown toning on the highpoints and a swipe of steel brown at UN. A light nick on the chin. E-MDS, Manley state 1.0. The overdate is clear and the reverse rotated 10 degrees CCW.

166. 1809 C-5 R1 F15. Overdate 9 over 6. Slightly sharper with a shallow rim cut at the top of the obverse. Glossy chocolate brown with some lighter brown in protected areas of the reverse. MDS, Manley state 2.0. The overdate is visible and the reverse not rotated.



167. 1809 C-6 R1 EF40. Glossy chocolate with frosty tan in protected areas. No notable defects. Sharp EDS, Manley state 1.0, the reverse 15 degrees CCW.



168. 1809 C-6 R1 AU55. Frosty light brown with steel brown highpoints and hints of underlying very faded mint red on the reverse. A pair of small rim nicks at S-O, otherwise free of defects. MDS, Manley state 3.0. The reverse is rotated 30 degrees CW.

169. 1809 C-6 R1 VF35. Five points sharper but lightly cleaned, now retoned glossy chocolate with lighter steel brown highpoints. No spots or marks. MDS, Manley state 3.0, the reverse 40 degrees CW.

170. 1809 C-6 R1 VF20. Glossy olive and steel brown. A small nick over L in HALF, otherwise choice. LDS, Manley state 6.0, the reverse 20 degrees CW.



171. 1810 C-1 R1 VF35. Glossy dark steel brown and chocolate with some frosty lighter brown in protected areas. A tiny vertical nick just right of the mouth. Nicely struck MDS, the reverse rotated 50 degrees CCW.

172. 1810 C-1 R1 VF25+. Ten points sharper with a patch of verdigris at stars 2 & 3 and a couple hairline scratches at the dentils left of those stars. Recolored glossy dark steel and chocolate brown. MDS, the reverse 30 degrees CCW.

173. 1810 C-1 R1 VF20. Glossy dark steel brown and chocolate. A faint rim bruise under the ribbon end at the bottom of the reverse. M-LDS, the reverse not rotated.



174. 1810 C-1 R1 VF35. Ten points sharper but lightly cleaned, now retoned a glossy light brown with steel brown highpoints. A fine hairline from the bust tip to star 2 and a dark spot from star 7 to the forelock. MDS, the reverse rotated 45 degrees CCW.



175. 1811 C-1 R4 VF25+. Glossy dark chocolate brown with some lighter brown on both sides. Sharply struck and free of defects, very close to VF30. A well above average example. EDS, Manley state 1.0, the reverse not rotated. Ex Rick Leonard-Bill Weber-John Peters.

176. 1811 C-1 R4 VG7. Four-Star Break. Slightly sharper with microscopic roughness in the fields. No verdigris or notable marks. Rather glossy medium brown and steel with some darker chocolate brown in protected areas. LDS, Manley state 5.0, with a large cud break at stars 1-4. The reverse is rotated 10 degrees CW. Ex John Peters.



177. 1811 C-2 R3 F12. Sharpness VF20 with some shallow digs at the E in CENT. Glossy bluish steel brown and chocolate. MDS, Manley state 2.0, the reverse not rotated.

178. 1825 C-1 R3 VF30. Sharpness AU50 with very fine porosity covering about half the planchet. No verdigris or contact marks. Lightly cleaned, now retoned a rather glossy reddish steel brown and chocolate. Sharply struck MDS, Manley state 2.0, the reverse 10 degrees CW.



179. 1825 C-1 R3 VF25. Sharpness EF40 but lightly burnished, now retoned glossy steel brown with tan and light brown in protected areas. The edge of the planchet is beveled over ATES, as struck. A tiny nick right of the nostril is the other notable mark. MDS, Manley state 2.0, the reverse rotated 45 degrees CW.

180. 1825 C-1 R3 VF25. Glossy medium brown with a dozen specks of darker olive toning on the obverse and a larger spot of darker chocolate toning at E in AMERICA. A thin horizontal nick on the chin and a tiny rim bruise at M. LDS, Manley state 3.0, the reverse rotated 140 degrees CCW.

181. 1825 C-1 R3 VF25. Glossy medium brown with a splash of reddish brown toning at the bust tip with similar toning under the wreath and a swipe of darker olive brown toning at NI in UNITED. LDS, Manley state 3.0, the reverse rotated 155 degrees CCW.

182. 1825 C-1 R3 VF20. Sharpness EF40 but dark with matte, finely granular surfaces. Dark olive and steel. No marks or verdigris. LDS, Manley state 3.0, the reverse rotated 140 degrees CW.

183. Pair of 1825 half cents. C-1 F15. LDS, Manley state 3.0, the reverse rotated 150 degrees CCW. C-2 F12. MDS, Manley state 2.0. Both are slightly sharper with minor defects.

184. Pair of 1825 half cents. C-1 F15. EDS, Manley state 1.0, the reverse slightly CW. C-2 F15. E-MDS, Manley state 1.0. Both glossy brown and chocolate. Lot of 2 coins.

EARLY DIE STATE 1825 C-2



185. 1825 C-2 R1 AU58. Lustrous bluish steel brown, the reverse with some sea-green overtones. Traces of faded mint red show in protected areas, especially on the obverse. A small spot of darker olive brown toning in the field left of star 10 is the only mark. An attractive example, very close to full mint state. E-MDS, Manley state 1.0.

186. 1825 C-2 R1 VF30. Ten points sharper with fine hairline scratches inside the wreath. Glossy light olive and steel brown with a couple spots of darker olive inside the wreath. E-MDS, Manley state 1.0.



187. 1825 C-2 R1 AU50. Nice glossy medium brown and chocolate with frosty lighter steel brown in protected areas and faded underlying red remaining on the reverse. A faint, very light vertical hairline right of star 3 is the only notable defect. MDS, Manley state 2.0.



188. 1825 C-2 R1 EF45+. Glossy medium brown with frosty lighter steel brown in protected areas and small splashes of darker steel brown toning sprinkled about the reverse. M-LDS, Manley state 3.0, with a thin but clear rim cud break at star 1.

189. 1825 C-2 R1 VF35. Slightly sharper with a dusting of carbon under the F in OF. Glossy steel brown and chocolate with frosty lighter steel brown and golden tan in protected areas. A pair of small spots of darker brown toning left of star 13 and another above the head. Nice eye appeal in spite of the few defects. LDS, Manley state 3.0.

190. Trio of 1825 & 1826 half cents, all VF20. 1825 C-2 MDS, Manley state 2.0. 1826 C-1 EDS, Manley state 1.0. 1826 C-2 EDS, Manley state 1.0. The second is sharper but slightly bent. All with decent glossy surfaces. Lot of 3 coins.

191. 1826 C-1 R1 EF45. Glossy medium brown and chocolate with dark steel brown toning on the highpoints. A tiny nick left of star 11. E-MDS, Manley state 2.0.

192. 1826 C-1 R1 VF35. Ten points sharper with some light contact marks, including a collection of tiny nicks in the center of the reverse. Glossy medium brown and chocolate. MDS, Manley state 3.0, the reverse rotated 15 degrees CW.

193. 1826 C-1 R1 EF45. Glossy medium brown with frosty lighter steel brown in protected areas. A swipe of darker steel brown toning left of stars 2-4 and a dull scuff on the rim between the date and star 13 are the notable marks. M-LDS, Manley state 4.0, the reverse rotated 20 degrees CCW.

194. 1826 C-1 R1 EF40+. Sharpness near AU50 but lightly cleaned, now retoned a glossy golden light olive brown and chocolate with a splash of reddish brown at star 13. No marks. M-LDS, Manley state 4.0, the reverse rotated 20 degrees CCW.

195. 1826 C-2 R3+ VF30. Ten points sharper with a thin nick on the bust tip, another right of star 5, and traces of very light roughness in some protected areas. Rather glossy dark chocolate with lighter steel brown highpoints. EDS, Manley state 1.0. Ex Dr. Charles Ruby, Superior 1974, lot 274.



196. 1826 C-2 R3+ EF45+. Glossy steel brown with frosty golden light steel brown in protected areas. A few very tiny ticks on the cheek and neck. E-MDS, Manley state 2.0.

1828 C-1 EX R. SCHONWALTER



197. 1828 C-1 R1 MS60. Lustrous light steel brown with faded mint red in protected areas of the obverse. A tiny rim nick under the bust tip and a speck of carbon in the dentils left of star 2. E-MDS, Manley state 2.0 early. Ex R. Schonwalter. Stack's 1/21/03:1192.

198. 1828 C-1 R1 AU50. Lustrous bluish steel brown with faded mint red in protected areas, especially on the reverse. A very thin planchet crease on the bust, as struck. E-MDS, Manley state 2.0.

199. 1828 C-1 R1 VF35. Ten points sharper with glue or tape residue on the highpoints. Otherwise a nice glossy chocolate with frosty lighter steel brown covering the protected areas. Needs a little TLC. E-MDS, Manley state 2.0.

200. 1828 C-1 R1 PCGS graded MS63 Brown. EAC grade MS60. Frosty light brown with a small swipe of dark steel toning across the A in STATES. MDS, Manley state 2.0.

201. 1828 C-1 R1 VF35. Slightly sharper but lightly cleaned, now nicely retoned glossy light olive brown and bluish steel. A small spot of very fine roughness on top of star 4 and two tiny ticks over A in HALF. MDS, Manley state 2.0.

202. 1828 C-1 R1 VF35. Ten points sharper but lightly cleaned, now retoned glossy bluish steel and chocolate with some reddish brown swipes on the obverse. No notable marks. MDS, Manley state 2.0.

203. Trio of 1828 C-1 die states. EDS, Manley state 1.0, VF20. MDS, Manley state 2.0, VF30. LDS, Manley state 3.0, F15. The first and last are sharper with minor defects. Lot of 3 coins.

204. Trio of 1828 die varieties. C-1 LDS, Manley state 3.0, VF20. C-2 12-Star Obverse MDS, Manley state 2.0, F12. C-3 MDS, Manley state 3.0, VF30. The first and last are slightly sharper with minor defects. Lot of 3 coins.

205. Pair of half cents, 1828 & 1829. 1828 C-1 VF20. Sharper but cleaned. LDS, Manley state 3.0. 1829 C-1 VF30. E-MDS, Manley state 1.0. Nice glossy brown. Lot of 2 coins.

206. Trio of 1828 & 1829 half cents. 1828 C-1 EDS VG10. 1828 C-2 12-Star Obverse LDS VG10, 1829 C-1 F15. The first and last are slightly sharper with minor defects. Lot of 3 coins.



207. 1828 C-2 R1 AU55. 12-Star Obverse. Mint state sharpness with a small splash of dark olive toning in the hair under BER, a few smaller and fainter ones on the bust, and a couple dull, light contact marks under the line below CENT. Otherwise this piece is a choice lustrous light steel brown with very attractive surfaces and a couple peeps of faded mint red. E-MDS, Manley state 2.0.



208. 1828 C-2 R1 AU50. 12-Star Obverse. Lustrous medium brown with golden light steel brown in protected areas and overtones of bluish steel on the reverse. Has mint state eye appeal. MDS, Manley state 2.0, with strong doubling on the reverse from die bounce. Ex Roger S. Cohen, Jr., Superior 2/2/92:319.



209. 1828 C-3 R1 MS62. Lustrous bluish steel brown with faded mint red covering the protected areas of the obverse. Choice except for a small spot of light carbon hidden in the hair over E in LIBERTY and a faint hairline in the field left of stars 11-13. M-LDS, Manley state 3.0, the reverse rotated 20 degrees CW.

210. 1828 C-3 R1 EF45. Slightly sharper but lightly cleaned, now retoned glossy light olive and steel brown with sea-green overtones on the reverse and traces of very faded red in some protected areas. No marks. E-MDS, Manley state 2.0, the reverse rotated 30 degrees CCW.

211. 1828 C-3 R1 VF35. Ten points sharper but lightly cleaned, now retoned glossy medium brown and chocolate with some lighter highpoints on the reverse. A collection of very tiny pinpricks over F in HALF. M-LDS, Manley state 3.0, the reverse rotated 20 degrees CW.

212. 1829 C-1 R1 VF35. Ten points sharper with a group of faint hairline scratches over CENT and fainter ones left of stars 9-12. Glossy chocolate brown, lighter brown on the chin and bust tip. E-MDS, Manley state 1.0.

213. 1829 C-1 R1 EF45+. Lustrous light brown and frosty tan. The only mark is a small splash of darker olive brown toning touching the curl left of star 13. M-LDS, Manley state 2.0.

214. 1829 C-1 R1 VF30+. Glossy chocolate brown, a small spot of darker olive brown over the L in HALF. LDS, Manley state 2.0 late.

215. "1831" made from an 1834 C-1 VF30. Glossy chocolate and frosty medium brown. The "4" was altered into a "1." The alteration was nicely executed, but I've seen better. Some of the light tooling marks remain visible on either side of the "1."

216. 1832 C-1 R2 EF40. Ten points sharper with extremely fine roughness in protected areas. Rather glossy dark steel and olive. Sharp EDS, stars 1-7 doubled from die bounce.

217. 1832 C-1 R2 VF30. Slightly sharper but the obverse was very lightly cleaned leaving some extremely faint hairlines. Glossy medium brown and chocolate. MDS.



218. 1832 C-1 R2 AU50. Glossy medium brown with a few splashes of darker steel brown toning on the reverse. LDS with what look like rim cud breaks at the 1 and bust tip. Ex Jack Beymer.



219. 1832 C-1 R2 EF45+. Glossy medium brown with frosty lighter steel brown covering the protected areas. A spot of darker olive brown toning left of star 4 is the only defect. Rare LDS. the die crack down through the A in STATES strong.

220. 1832 C-2 R2 EF45. Lustrous medium brown with a small splash of reddish brown toning in the center of the reverse. LDS, Manley state 3.0.

221. Group of four 1832 & 1833 half cents. 1832 C-2 EDS, Manley state 1.0, VG10. 1832 C-2 MDS, Manley state 2.0, VF20. 1833 C-1 MDS, Manley state 2.0, VG10. 1833 C-1 MDS, Manley state 2.0, VF25. A couple are slightly sharper with minor defects. Lot of 4 coins.

222. 1832 C-3 R2 AU58. Mint state sharpness with a small spot of reddish brown toning in the hair below IB in LIBERTY, and this spot contains some extremely fine roughness. Otherwise the surfaces are a nice frosty light brown and tan with a couple splashes of chocolate on the reverse. MDS.

223. 1832 C-3 R2 AU50. Glossy chocolate brown with frosty luster in protected areas. A light nick on the jawline near the earlobe. A series of small rim cud breaks at the bottom of the obverse.

224. 1833 C-1 R1 EF40+. Sharpness AU50 but cleaned, now partially retoned a dull reddish golden tan with steel brown highpoints. A couple light nicks at F in OF. EDS, Manley state 1.0.

225. 1833 C-1 R1 AU50. Choice glossy medium brown and chocolate. A tiny nick on the tip of the chin. MDS, Manley state 2.0.

226. 1833 C-1 R1 EF45+. Glossy light brown with darker steel brown highpoints. A tiny rim nick just right of the date. Close to AU50. MDS, Manley state 2.0.

227. 1833 C-1 R1 EF45. Glossy light steel brown with lustrous golden lighter steel brown in protected areas and darker steel brown highpoints. No defects. MDS, Manley state 2.0.



228. 1833 C-1 R1 AU50+. Lustrous light bluish steel brown, the reverse with much frosty lighter brown. No defects. Rare LDS, Manley state 3.0, with extensive sharp die clashmarks on the obverse.



229. 1833 C-1 R1 AU50. Glossy chocolate with lustrous lighter steel brown in protected areas. Just a few trivial ticks from choice. Rare LDS, Manley state 3.0, with sharp die clashmarks covering the obverse fields.



230. 1834 C-1 R1 AU50. Sharpness very near mint state but lightly cleaned, now retoned frosty medium brown with some reddish brown toning on the lower right portion of the obverse. A small spot of roughness off the bust tip and a tiny nick over E in CENT. EDS, Manley state 1.0.

231. 1834 C-1 R1 VF35. Glossy olive brown and chocolate. A couple dull, light nicks on the cheek. EDS, Manley state 1.0.

232. 1834 C-1 R1 AU55. A mint state piece that was chemically cleaned, now lustrous faded red mellowing to light steel brown on the highpoints. No spots or notable marks. MDS, Manley state 2.0.

233. 1834 C-1 R1 EF45. Ten points sharper with traces of extremely fine roughness on the obverse, including a small spot of very fine porosity on the cheek. Excellent eye appeal with satiny, lustrous surfaces to the unaided eye. Frosty dark steel brown and chocolate. MDS, Manley state 2.0.

234. 1834 C-1 R1 EF40. Slightly sharper but nicely recolored glossy olive and chocolate brown. A shallow low spot extends from the chin down to the bust, as struck. MDS, Manley state 2.0.

235. Pair of 1834 & 1835 half cents, 1834 C-1 F15+, EDS, Manley state 1.0. 1835 C-2 F12. LDS, Manley state 3.0. Both glossy chocolate brown. Lot of 2 coins.

236. 1835 C-1 R1 AU58. Lustrous light steel brown with frosty light reddish tan faded down from mint color in protected areas. A tiny nick over the left top of E in CENT. Has mint state eye appeal. M-LDS, Manley state 2.0.

237. 1835 C-1 R1 AU55. Clipped Planchet. Lustrous light steel brown, the reverse a shade or two darker than the obverse. A small spot of darker olive toning on the jawline near the earlobe. A small planchet clip weakens the dentils at stars 11-12 and at F-A, as struck. LDS, Manley state 2.0.

238. 1835 C-1 R1 EF45. Glossy steel brown and chocolate with frosty lighter brown and steel in protected areas, the reverse a couple shades lighter than the obverse. No spots or contact marks. LDS, Manley state 2.0.

239. 1835 C-1 R1 VF35. Ten points sharper but recolored glossy chocolate and reddish steel brown. No spots. A faint hairline down from star 13. LDS, Manley state 2.0.

240. 1835 C-2 R1 AU50. Frosty light brown with bluish steel toning on obverse highpoints. A tiny nick on the top of the L in HALF. E-MDS, Manley state 2.0, the reverse rotated 20 degrees CW.

241. 1835 C-2 R1 EF40. Slightly sharper but lightly cleaned, now nicely retoned glossy chocolate brown, a couple shades darker on the lower half of the obverse. A sharp nick under the ribbon loop at the bottom of the reverse. M-LDS, Manley state 3.0 early, the reverse 10 degrees CW.

242. 1835 C-2 R1 VF35+. Glossy light brown, darker bluish steel brown on the lower portion of the reverse. A small rim nick above star 8. M-LDS, Manley state 2.0, the reverse rotated 10 degrees CW.

243. 1835 C-2 R1 EF40. Glossy dark steel brown and chocolate. A light rim bruise at U in UNITED. LDS, Manley state 3.0, the reverse rotated 10 degrees CW.

244. 1835 C-2 R1 EF40. Slightly sharper but lightly cleaned, now retoned glossy medium brown on the obverse, chocolate on the reverse. No spots or marks. LDS, Manley state 3.0, the reverse rotated 20 degrees CW.

245. 1835 C-2 R1 VF35. Glossy light to medium brown with darker steel brown highpoints. A tiny rim nick under the stem tip. LDS, Manley state 3.0 late, the reverse 15 degrees CW.

246. Trio of 1835 C-2 die states. EDS, Manley state 1.0, F15. MDS, Manley state 2.0, VF25. LDS, Manley state 3.0, VF30. A couple are slightly sharper with minor defects. Lot of 3 coins.

247. 1837 Half Cent Hard Times Token Low-49 EF40. Glossy medium brown with a few lighter highpoints on the eagle. A tiny rim nick left of P in PURE.

248. 1849 C-1 R2- AU55. Choice frosty light to medium brown. No defects. Sharply struck EDS, Manley state 1.0.

249. 1849 C-1 R2- AU50. Attractive glossy medium brown. A faint, very thin nick in the middle of the cheek and another over the ribbon loop under EN in CENT are the only marks. EDS, Manley state 1.0, with sharp doubling on much of the obverse, including the date, from die bounce. The fields are smooth and slightly reflective.



250. 1849 C-1 R2- MS60+. Frosty light steel brown with 25% of the original mint red remaining. No spots or stains, just a few tiny ticks here and there from choice. MDS. Manley state 2.0, the reverse rotated 85 degrees CCW.

251. 1849 C-1 R2- EF40. Slightly sharper with several small, very light rim bruises on each side, the strongest ones at T in UNITED and the first T in STATES. Nice glossy medium brown. MDS, Manley state 2.0, the reverse rotated 20 degrees CW.

252. 1849 C-1 R2- VF35. Ten points sharper but recolored glossy medium brown with lighter tan highpoints and very faded red in protected areas. A tiny rim nick over star 6 and a tick just right of star 3. MDS, Manley state 2.0, the reverse rotated 20 degrees CW.

253. 1850 C-1 R2- VF30. Ten points sharper with a small spot of light reddish verdigris at the dentils under 85 and another on the E in STATES. Glossy medium brown, some reddish olive in protected areas of the reverse. EDS with sharp doubling from die bounce on much of the obverse, including the entire date.

254. 1851 C-1 R1 AU50. Sharpness close to mint state with a peppering of very tiny specks of dark toning or carbon on the obverse. Glossy light to medium brown with darker steel brown covering the obverse highpoints. Traces of faded mint red show on the reverse. EDS. Breen state 1, with all the fine die lines he describes for the proof strikes of this variety. The fields are slightly reflective, especially on the obverse.

255. 1851 C-1 R1 EF40. Ten points sharper but lightly cleaned, now retoned medium brown and chocolate with hints of bluish steel in protected areas. No spots or marks. E-MDS with sharp doubling on the lips, chin, bust, and stars.

256. 1851 C-1 R1 EF45. Ten points sharper but lightly cleaned, now retoned glossy medium brown and chocolate with frosty light brown in protected areas. A thin nick midway between star 1 and the throat is the only mark. MDS.

257. 1851 C-1 R1 VF30. Ten points sharper with too many tiny contact marks for the sharpness grade. Glossy light to medium steel brown, probably retoned. MDS with sharp doubling on much of the obverse, including a double profile on the nose, lips, chin, bust, LIBERTY, and most of the stars.

258. Pair of half cents, 1851 & 1853. 1851 C-1 VF35. MDS with a double profile on the nose, lips, chin, bust, BERT, and many of the stars. 1853 C-1 VF30. M-LDS. Both are sharper but recolored. Lot of 2 coins.

SPECTACULAR CLIPPED PLANCHET 1851 C-1



259. 1851 C-1 R1 MS62. Clipped planchet. Lustrous bluish steel brown with 15% of the red remaining. No spots or marks. MDS. A straight-edge planchet clip severely weakens the stars and dentils from star 8 to star 10 and over ICA to the stem tip, as struck. An attractive example and a rather significant clip error for a Braided Hair half cent.

260. 1853 C-1 R1 EF45. Choice glossy medium brown and chocolate. A couple tiny rim nicks at the bottom of the obverse and reverse. Otherwise choice. LDS, the fields flowlined and wavy.

261. 1853 C-1 R1 EF40. Ten points sharper but recolored glossy medium steel brown and chocolate. No spots or marks. LDS, the fields flowlined and wavy.

262. 1853 C-1 R1 VF35. Slightly sharper with a tiny rim bruise at star 6 and a couple others at IT and F-A on the reverse. Glossy chocolate brown. LDS with fine doubling on the date and stars 11-13.

263. 1854 C-1 R1+ AU58. Frosty medium brown with lustrous lighter steel brown in protected areas and darker bluish steel toning between stars 11 & 12. Sharp and very close to mint state, just a few trivial signs of light contact, including a couple tiny rim nicks under the ribbon tip on the reverse. EDS, Manley state 1.0, with sharp doubling along the front edge of the neck.

264. 1854 C-1 R1+ EF40. Glossy chocolate brown. A thin nick high along the jawline the only defect. EDS, Manley state 1.0.

265. 1854 C-1 R1+ VF25. Sharpness near mint state but covered with fine crud, mostly in protected areas of the reverse. Dark steel and reddish chocolate brown. EDS, Manley state 1.0. Sharp but not very pretty.

266. 1854 C-1 R1+ EF45. Ten points sharper but cleaned, the obverse nicely retoned a natural glossy medium brown but the reverse just starting to fade down to a more natural color. Needs a little TLC. E-MDS, Manley state 1.0.

267. 1854 C-1 R1+ VF35. Sharpness AU50 but cleaned, both sides covered with faint hairlines. Starting to retone light reddish steel brown. A small rim nick at the bottom of the reverse but no spots. E-MDS, Manley state 1.0.

268. 1854 C-1 R1+ AU55. Sharpness mint state but lightly cleaned, now retoned a lustrous golden tan with faded red in protected areas. A tiny rim nick at star 7. MDS, Manley state 1.0.

269. 1855 C-1 R1 AU50. Sharpness closer to mint state but covered with very tiny lint marks from fine debris on the dies. No spots or marks. Attractive glossy medium brown. Sharply struck E-MDS.

270. 1855 C-1 R1 AU58. Mint state sharpness with a small spot of reddish verdigris at the dentils over F in OF. Frosty light steel brown with a few small spots of darker bluish steel on the reverse and traces of mint red in a few protected areas. MDS.

271. 1855 C-1 R1 EF40. Ten points sharper but recolored glossy reddish steel brown. No spots or marks, just some fine hairlines from the original cleaning. MDS.

272. 1856 C-1 R2 EF45. Slightly sharper with a half dozen very tiny rim nicks on the obverse and a few very faint hairlines on the jawline and throat. Nice glossy medium brown with frosty lighter brown in protected areas. Sharp E-MDS. Manley state 1.0. The lump on the I in UNITED is strong.

273. 1856 C-1 R2 AU55. Mint state sharpness but lightly cleaned, now retoned a glossy golden tan and light brown. A spot of darker olive toning on the 6 and a light nick close over the stem end are the notable marks. MDS. Manley state 2.0. The rust lump on the I in UNITED is dull and barely visible.

274. 1856 C-1 R2 AU50. Glossy light to medium brown with frosty luster covering the protected areas. A small, very light rim nick under the left side of the 1 is the only defect. MDS, Manley state 2.0, with the rust lump on I in UNITED dull and barely visible.

275. 1856 C-1 R2 EF45. Slightly sharper with a thin, sharp nick on the neck. Choice glossy light to medium brown with frosty luster covering the fields. MDS. Manley state 2.0, only a hint of the rust lump on I in UNITED still visible.

276. 1856 C-1 R2 VF35+. Sharpness EF45 with some small, very light rim bruises on the reverse, strongest at D-S. Nice glossy light to medium brown with frosty luster in protected areas. MDS, Manley state 2.0. The rust lump on I in UNITED is dull but visible.

277. 1856 C-1 R2 VF30. Ten points sharper with a shallow cut out of the rim over IC in AMERICA and a tiny pinprick on the lower part of the neck. Glossy medium brown. M-LDS. Manley state 2.0, the lump on I in UNITED dull and barely visible.

278. 1856 C-1 R2 VF25. Sharpness EF40 with many tiny nicks scattered about both sides, none notable but far too many for the sharpness grade. Glossy medium brown. MDS.

279. Pair of 1856 C-1 half cents. VG10 & VG8. Both are nice glossy brown. No significant defects, just honest wear. Lot of 2 coins.

280. 1857 C-1 R2 AU55. Mint state sharpness but lightly cleaned, now retoned a glossy medium brown, the reverse with some darker steel brown tones, and faded red in protected areas. A small, shallow low spot in the field under the hairbun. EDS, the fields smooth and slightly reflective.

281. 1857 C-1 R2 AU50. Glossy chocolate brown with some medium brown toning in protected areas of the reverse. No spots, a very tiny lamination on the stem tip the best identifying mark. EDS.

SPECTACULAR CLIPPED PLANCHET 1857 C-1

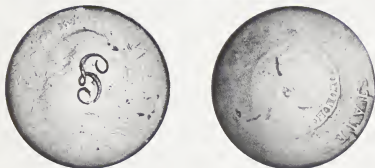


282. 1857 C-1 R2 MS60. Clipped planchet. Frosty light steel brown with traces of faded mint red in protected areas. No spots of other marks. A straight-edge planchet clip weakens the dentils at stars 6-8 and at the bottom of the reverse. MDS. An attractive example of this type mint error. Ex Doug Bird. Removed from a PCGS slab graded MS62 Brown (PCGS label included).

DONATED LOT
MANLEY HALFCENT DIE STATE BOOK

283. Manley book on half cents titled "The Half Cent Die State Book 1793-1857." The primary die state reference used when cataloging the half cents in this sale. New, hardbound. Donated lot, all proceeds to EAC.

LARGE CENTS



284. 1793 S-1 R4 Basal State-1. Chain AMERI. Nice glossy chocolate brown. The planchet is smooth, completely free roughness or stains. A script "G" is neatly engraved into the center of the obverse and there are a few small, shallow planchet chips on the reverse. LIBER is still visible, the portrait is faint but nearly complete, and using some imagination you can see hints of the tops of the 93. At least half the chain is visible and STATES is strong, which is fortunate since that's where the strong cud break connects TAT to the rim. Breen's rare terminal state VI. Decent eye appeal for a Basal State Chain Cent, and the cud break makes this piece very special, indeed. Ex Northern Illinois Coin Co. 6/81-John D. Wright.

1793 S-11 C EX. JACK ROBINSON



286. 1793 S-11c R3- F15. Wreath Cent. Lettered edge with single leaf following DOLLAR. Sharpness at least VF30 with several planchet laminations on the obverse, including a relatively deep one covering the neck. The areas not affected by the lamination fissures are smooth and very attractive, and the reverse is nearly choice. Glossy medium brown and olive. The die clashmarks in the field before the face (from ERICA) are strong. Ex Jack Robinson, Superior 1/29/89:15-Tom Reynolds 4/90.



285. 1793 S-10 R4 VG7. Wreath Cent. Double counterstamped. Slightly sharper with fine granularity covering the planchet, strongest in the protected areas and relatively smooth on the highpoints. Rather glossy medium brown and chocolate delicately mottled with some darker olive brown tones on the obverse. The date is clear and legends complete. Two counterstamps were added to the obverse, both old-style gang punches with raised letters inside incuse rectangles. The punch in the field behind the head reads "I. OWEN" and the one in the field before the head reads "I. M. SMITH". The first is listed in Brunk as #30450, the second is unlisted. A really neat Wreath Cent. Ex Superior 2/16/76:1346-John D. Wright.

287. 1794 S-20 R4+ Fair-2. Head of 1793. The obverse is slightly better while the reverse is weaker. Slightly glossy medium brown and chocolate with darker olive brown in protected areas. The upper half of the date is clear, as is most of LIBERTY and nearly all the portrait. Only portions of the reverse remain visible, and those are weak, but enough can be easily made out to make a positive attribution. The edge lettering is complete and strong. Some very fine roughness but no verdigris or notable marks.

288. 1794 S-23 R4+ Fair-2+. The upper half of the 94 is visible but the rest of the date is gone. All of LIBERTY and two-thirds of the reverse are readable. Slightly glossy light steel brown with darker olive brown in protected areas. A few patches of very light roughness but no verdigris or notable marks. LDS. Breen state V.

289. 1794 S-24 R1 VG7. Sharpness F12 with very fine granularity leaving matte surfaces. No verdigris. The only mark is a dull but rather deep dig at ON in ONE down to C in CENT. Medium steel with steel brown highpoints, the highpoints a bit glossy compared to the matte fields. The date and legends are clear, except for CENT, which is weakened by the usual swelling in that area. M-LDS.

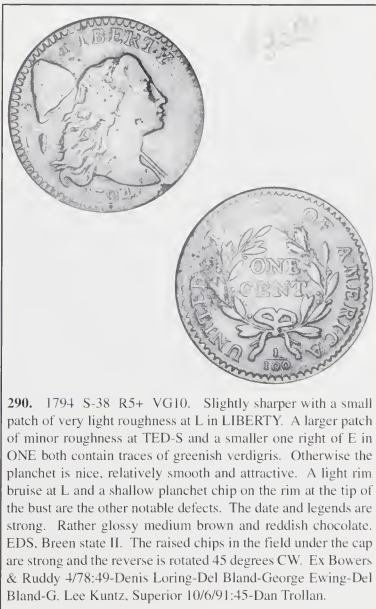


291. 1794 S-38 R5+ AG3+. The obverse is slightly better, the reverse equally weaker. The fields are covered with microscopic porosity and there are dull dents on the rim left of the date, at U in UNITED, and at the second S in STATES. The date is nearly complete and the legends can all be made out, although portions are weak. Slightly glossy steel brown, the highpoints lighter than the fields. The chips in the field under the cap are visible but not strong, and the reverse is rotated 20 degrees CW.

292. 1794 S-38 R5+ Fair-2. Several points sharper but moderate to strong corrosion covers the planchet. No verdigris or marks. The date is faint at best but the legends can all be made out in spite of the roughness. Reddish chocolate brown, the highpoints a few shades lighter. The reverse is rotated 45 degrees CW.



293. 1794 S-40 R5+ AG3+. Slightly sharper with minor roughness covering the fields and a small punchmark in the center of the obverse. A dull rim bruise at M and a small planchet chip on the rim at the second S in STATES are the other notable marks. The upper two-thirds of the date is visible and the legends are complete except for ENT, which is weakened by die swelling. Rather glossy medium brown highpoints with reddish chocolate fields on the obverse and darker chocolate brown fields on the reverse. The die chips under the cap are clear. Decent for the grade, close to G-4.



290. 1794 S-38 R5+ VG10. Slightly sharper with a small patch of very light roughness at L in LIBERTY. A larger patch of minor roughness at TED-S and a smaller one right of E in ONE both contain traces of greenish verdigris. Otherwise the planchet is nice, relatively smooth and attractive. A light rim bruise at L and a shallow planchet chip on the rim at the tip of the bust are the other notable defects. The date and legends are strong. Rather glossy medium brown and reddish chocolate. EDS. Breen state II. The raised chips in the field under the cap are strong and the reverse is rotated 45 degrees CW. Ex Bowers & Ruddy 4/78:49-Denis Loring-Del Bland-George Ewing-Del Bland-G. Lee Kuntz, Superior 10/6/91:45-Dan Trollan.

**TERMINAL DIE STATE 1794 S-46
EX. GILBERT-CLARKE-RUBY-MORLEY**



294. 1794 S-46 R3 VG8. Slightly sharper with a small rim bruise at the second S in STATES, a few faint hairline scratches in the center of the reverse, and microscopic roughness in protected areas, the contrast accenting the details. Rare terminal die state. Breen state V. The obverse die cracks are very strong and the areas outlined by those cracks are sunken into retained cud breaks. Nice eye appeal in spite of the minor defects, and it comes with a great pedigree. Ex Ebenezer Gilbert-Barney Bluestone FPL 1/48; 984-T. James Clarke-Dr. Charles Ruby-1975 EAC Sale, Pine Tree Auctions, 2/15/75; 624-Tom Morley (the 'Jovied' two-tone 1794 cents such as this one). Cape Kennedy Medals 12/20/75; 39-Del Bland 2/78-John D. Wright.



295. 1794 S-51 R5- ANACS slabbed and graded VF details net F12. EAC grade F15 net G6. Glossy dark chocolate with lighter brown highpoints. The surfaces are lightly corroded, strongest on the reverse. No verdigris. A small rim bruise at B in LIBERTY and a shallow planchet chip on the rim left of the fraction. The date is strong and legends complete, although the details are blunted by the roughness. MDS.

296. Pair of 1794 cents. S-51 R5- F12 net AG3 for porosity. Clear date and readable legends. S-72 (exact head of 1795) R2 VG8 net AG3 for light corrosion and rim bruises. Date and legends complete. LDS. Lot of 2 coins.



297. 1794 S-54 R3 VF25. Ten points sharper with a few light contact marks on the obverse, including a dull, short scratch in the field under the chin, a fine hairline scratch in the field before the eyebrow, a small nick under the earlobe, and a dull nick on the rim opposite the neck. The first of these marks is a bit distracting but the others are insignificant. Glossy olive brown and chocolate with traces of lighter toning in protected areas of the reverse hinting at an old cleaning. E-MDS, Breen state II.

RARE DIE STATE 1794 S-58



298. 1794 S-58 R3 VG8. Sharpness F12 but cleaned, now mostly retoned a glossy tan and golden light olive brown. Only a few minor marks, including a small dull rim nick over the left top of R in LIBERTY, a dull nick in the hair over the 17, and small rim nicks at AM and I in AMERICA. Rare LDS, Breen state II, with a raised retained cud break at UNIT. Would benefit from a more complete retoning, but it's still an attractive example of this tough die state. Ex Gordon Wrubel 7/77.



299. 1794 S-59 R3- F15. Clipped planchet. Rather glossy steel brown and chocolate, but under the natural patina is uniform extremely fine porosity. A faint hairline scratch in the field under the cap is the only notable mark. Date and legends bold, although the tops of LIBE are fading into the rim above. A small planchet clip, as struck, affects the dentils opposite the mouth and over ME.

SHARP 1794 S-60



300. 1794 S-60 R3+ VF25. Sharpness EF40 but covered with very fine granularity. No verdigris. A very faint hairline scratch extends from the bottom of the neck to the dentils opposite the mouth. A small, light rim bruise at the bust tip is the other notable defect. Rather glossy olive brown and steel. M-LDS, Breen state IV.



301. Pair of cents made into wheels (or gears). 1794 S-61 AG3 or so before the work was performed. The top of the 4 is visible and the portrait is clear, but most everything else is gone. Rather glossy light brown. The gearing was added by hand, purpose unknown. 1847 N-41 VF25 before the work. A different gear pattern, probably for a different purpose and neatly holed in the center. Glossy steel brown and chocolate with evidence of having been recolored long ago. Lot of 2 really odd cents.



302. 1794 S-62 R4+ F15. Slightly sharper but the area at TES-OF is slightly rough from a collection of tiny planchet chips in that area. A light nick in the middle of the jawline and a short hairline scratch at NI in UNITED. Glossy dark steel brown and olive with some lighter reddish chocolate brown in protected areas. LDS. Breen state II, with a large cud break on the left edge of the obverse.



303. 1794 S-62 R4+ VG10. Five points sharper with very fine porosity on much of the reverse a planchet chip or pitmark in the hair over the earlobe, and a few light rim bruises on both sides, the strongest one just right of the 4. Rather glossy medium brown with darker olive brown in protected areas and a spot of greenish verdigris inside the O in ONE. Strong date and clear legends. LDS. Breen state II. Ex Bowers & Merena 9/22/97:264.

304. 1794 S-64 R5- Fair-2. Missing Fraction Bar. A couple points sharper, especially on the obverse, but the surfaces are covered with very fine porosity and there is a small, dull dent on the nose tip. No verdigris. The date is weak but easily readable and about half the reverse legend can be made out. The missing fraction bar feature is faint at best. Chocolate and steel brown. LDS with a clear die crack through D in UNITED to the wreath.

ATTRACTIVE 1794 S-68
EX. THE CALIFORNIA AVIARY
& COL. ELLSWORTH



305. 1794 S-68 R5 F15+. Bisected Obverse. Nice glossy chocolate and steel brown. A tiny planchet chip on the temple and a couple more on the lower half of the neck, as struck, plus a dull, light nick under the A in STATES. A very attractive example of this rare variety, close to choice. MDS. Breen state III. Ex Doug Bird 1/12/97-personal collection of Steve Ellsworth until 3/1/01.



306. 1794 S-68 R5 AG3. Bisected Obverse. Sharpness VG8 with a dozen rather large pitmarks on the obverse plus a few relatively insignificant ones on the reverse. Portions of the obverse have been lightly smoothed to minimize the pitmarks. No verdigris. The date is bold and legends strong. Dark steel and chocolate with some lighter brown highpoints. LDS, the bisecting obverse die crack strong. Ugly but nice detail for this rare variety. Purchased in London, England, from A. H. Baldwin & Sons, Ltd., 5/29/79.

307. 1794 S-70 R2- G5. A few points sharper but covered with light to moderate corrosion. No marks, but much of the planchet is covered with a waxy greenish patina that is easily removable. Clear date and legends. Olive and steel brown. LDS.



308. 1794 S-72 R2 VG10. Exact Head of 1795. Glossy chocolate brown. There are a few small nicks at the bottom of the cap, a dull nick on the leaf tip over E in ONE, and a few light rim bruises on each side, the strongest one at RI in AMERICA. The date and legends are bold. MDS, Breen state III.

BOOKS RELATED TO 1794 CENTS

309. Frossard & Hays 1893 New York Printing of the "Varieties of United States Cents of the Year 1794". The spine is loose and the first page of plates is present but no longer attached. The edges of the pages are lightly discolored but the two pages of plates are clear. Not too bad, perhaps net VG10 by 1794 cent grading standards. A rare manuscript and an important work for the study of 1794 cents.

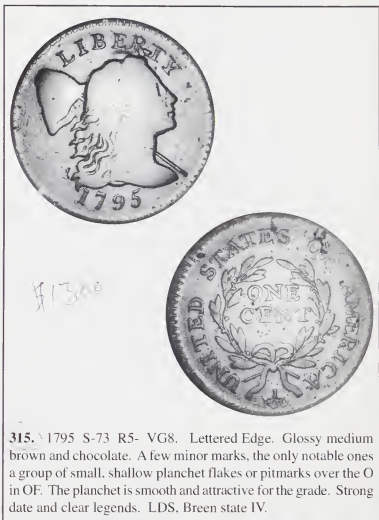
310. Doughty on U. S. Cents, the 1934 reprint by Holland A. Davis in Denver, Colorado. Decent shape, the spine a bit frayed by no significant defects.

311. The November 1973 New Netherlands/Seaby catalog of the R. E. Naftzger, Jr., sale of early large cents, 1793-1814. Comes with list of prices realized laid in. 14 plates of large cents, all of good quality. Near new.

312. The Tom Morley grading guide for 1794 cents, "1794 Large Cents Graded and Updated". A signed copy. New.

313. John W. Adams Collection sale catalog, Bowers & Ruddy Galleries 1982 FPL. The hardbound "Special Limited Library Edition". Copy #83 of 256, signed by Adams, Bowers, and Richard Bagg. Price list laid in, colored plate added in back. New.

314. John W. Adams Collection sale, the normal softbound edition. Otherwise as above, but without any autographs. New or nearly so.



315. 1795 S-73 R5- VG8. Lettered Edge. Glossy medium brown and chocolate. A few minor marks, the only notable ones a group of small, shallow planchet flakes or pitmarks over the O in OF. The planchet is smooth and attractive for the grade. Strong date and clear legends. LDS, Breen state IV.



316. 1795 S-74 R4- VG7. Lettered Edge, blundered ONE HUNDRED A DOLLAR. Slightly sharper with a rim dent left of the cap, a pair of fine hairline scratches slanting across the portrait just above the ear, and a trio of rim bruises on the reverse, the strongest of these at IT in UNITED. Glossy medium brown, the obverse highpoints a shade or two lighter from a very light cleaning. The blundered edge lettering is clear.

FLIPOVER DOUBLE STRIKE 1795 S-76a



317. 1795 S-76a R5 G5. Lettered Edge. Flipover double strike. The initial strike was slightly off center, the second properly centered. F-AME from the initial strike show clearly at the dentils above the cap and LI in LIBERTY. No other undertype is visible, at least not clearly. The planchet diameter is larger than normal due to the extra strike (s?), now a full 31.0 millimeters. Weight 204.5 grains. The obverse is slightly better while the reverse is weaker. Both sides are covered with some light nicks and there is a fissure at the rim over TA in STATES, as struck. Strong date but portions of the reverse are weak or missing.



318. 1795 S-76b R1 F12. Plain Edge. Clipped Planchet. Sharpness VF20 with some very fine parallel hairlines on the cheek, neck, and bust, plus a half dozen dull nicks on the reverse, the strongest of these at the base of the E and top of the N in CENT. A deep planchet-cutter impression arcs across the lower obverse from the dentils under the 1 to the bust tip and the opposing area at STATES OF, as minted. In addition, there is a rather large, curved planchet clip, also as struck, that eliminates the dentils opposite the face and over MER. Working hard to get one more planchet out of that strip. Nice glossy chocolate brown with medium brown highpoints. An attractive double error. Ex Dale Sheely 4/94.



319. 1795 S-76b R1 VG10. Plain Edge. Glossy medium brown with a small spot of dark olive at the top of the head. A decent planchet, the surfaces relatively smooth in spite of some trivial flakes or pitmarks. Strong date and complete legends, although ICA and the denominator are weak. E-MDS.



320. 1795 S-77 R3+ F12. Glossy medium brown with a few splashes of darker chocolate brown on both sides. A few tiny rim nicks at ICA to the right ribbon end and a small planchet flake at the rim over ME. Clear date and complete legends. M-LDS. Breen state V, minor swelling at ST.



321. 1795 S-77 R3+ VG10. Nice glossy medium brown and chocolate. Choice except for a shallow but relatively deep planchet void on the face left of the eye, as struck, and a dull pinch on the rim over in LIBERTY. LDS. Breen state VI with strong swelling left of the date, at ED-ST, and MER.



322. 1795 S-77 R3+ VG10. Glossy light brown with steel brown highpoints. A tiny rim bruise under the 7, otherwise choice for the grade. M-LDS. Breen state VI early. Swelling left of the date and at ST and MER. Ex John Vogelsang 10/71.

FLIPOVER DOUBLE STRIKE 1795 S-77



323. 1795 S-77 R3+ ANACS graded VG8. EAC grade the same. Flipover double strike. Choice glossy medium brown and chocolate. Smooth and free of defects. The upper half of the head and cap plus BE of LIBERTY show clearly as undertype on the upper left half part of the reverse. I can find no undertype on the obverse, so the initial strike may have been uniface (against a blank planchet on the reverse side). Regardless, this is a very attractive and impressive mint error. Plated in the Breen book to illustrate the flipover double strike type of error (see page 253). M-LDS, Breen state IV. Ex Bowers & Merena 3/96:77.

324. 1795 S-78 R1 AG3+. The obverse is very slightly better while the reverse is weaker. Dark chocolate and steel with a couple splashes of darker olive on the reverse, and these dark areas are slightly rough. The surfaces are covered with very fine roughness. Clear date and legends mostly complete.

325. Group of four 1795 & 1796 cents. 1795 S-78 AG3. 1795 S-78 LDS Fair-2. 1796 S-89 AG-3. 1796 S-91 Fair-2. All are slightly sharper with minor defects and have a readable date.



326. 1796 S-81 R3- VG10. Sharpness VF20 but dark and covered with fine granularity. A few small patches of light verdigris on each side and a half dozen light parallel scratches at ONE. Slightly glossy dark olive with a light greenish patina, probably from being lost in soil for some time. The date is bold and legends strong. EDS.

327. 1796 S-85 R5- G4. Slightly sharper with a thin scratch from the rim through the bottom of the cap into the hair and a shallow planchet flake at F in OF. Rather glossy chocolate and steel brown. The date is clear, although the bottom is fading into the rim, and the legends are complete except for ATES OF AME, which are faint at best due to the uneven strike.

328. Trio of 1796 cents. S-89 G4. S-91 AG3. S-112 Draped Bust Basal State-14. The second is much sharper but corroded.

329. 1796 S-91 R3 G5. Clipped Planchet. A few points sharper but dark and very lightly corroded. A dull depression or void over the shoulder, another at the bust tip, and a hairline scratch down through the cap to the lower curls. Rather glossy dark olive. The date is bold and legends complete except for weakness at STA. MDS. A small curved planchet clip affects the dentils at RTY and the second A in AMERICA.



330. 1796 S-93 R3- VG10. Draped Bust. Sharpness VF20 with dull scrapes that weaken ONE CENT. Otherwise the planchet and surfaces are excellent except for some tiny pitmarks at the curl on the neck and a couple more at I in LIBERTY. Glossy medium brown. Sharply struck EDS.

CC LEVEL 1796 S-97



331. 1796 S-97 R3+ VF25. Draped Bust. Sharpness EF45 but recolored glossy medium brown and chocolate with some frosty lighter brown in protected areas. Coated with a thin layer of lacquer that gives the obverse a high gloss. Some minor roughness from tiny pitmarks was smoothed out near the dentils above the bust tip and left of the lower curls, and similar smoothing was done on a patch of fine roughness at S-O and the second A in AMERICA. The recoloring certainly followed the minor repairs. LDS, Breen state V, with a strong cud break at TY. Listed in the Noyes census as net VF20 and tied for CC#6. Bland says net VF30 and tied for CC#5. Second finest with the cud break. Ex Robert F. Batchelder-Abner Kreisberg via Jerry Cohen 5/1/69-R. E. Nafziger, Jr.-Clay Everhart-Chris McCawley-James E. Long.



332. 1796 S-97 R3+ F12. Draped Bust. Sharpness VF35 with very fine granularity, mostly on the reverse. A dull dig in the drapery above the 9 and a light rim bruise under the 6 are the notable marks. The planchet is very slightly bent. Somewhat glossy dark steel and olive brown. M-LDS, Breen state IV.



333. 1796 S-99 R5+ VG7. Draped Bust. Sharpness F12 with patches of light porosity, strongest at the bust tip. No verdigris or contact marks. Recolored a slightly glossy olive and steel brown with chocolate brown in protected areas of the reverse. EDS, Breen state I. The date and legends are clear.

334. 1796 S-99 R5+ Fair-2. Draped Bust. Sharpness VG10 but moderately corroded. The corrosion weakened the details, but the date and legends can still be made out. A large, dull pitmark at the mouth plus a couple smaller ones on either side of this one add to the scudgy appearance of this cent. Very dark steel and olive with a few other strange tones mixed in. EDS.



335. 1796 S-102 R4 VG8. Draped Bust. Sharpness VF20 but covered with uniform fine to moderate granularity. No verdigris. A shallow planchet chip at the top of Y is the notable mark. Covered with a thin layer of lacquer to add gloss and minimize the roughness, and the lacquer has fine brushlines imbedded in the coating. Looks nicer than the description might imply. Rather glossy dark steel and olive brown. MDS, Breen state II early. The date and legends are clear.

SHARP LIBERTY ERROR 1796 S-103



336. 1796 S-103 R4+ VG10+. Draped Bust. LIBERTY obverse. Sharpness VF20 with fine granularity covering the fields. No verdigris, a shallow void over the E in ONE the only notable mark. Medium olive and steel brown. Nicely struck EDS, Breen state I. The date and legends are clear and the LIBERTY error is bold.



337. 1796 S-105 R5+ G5. Draped Bust. Sharper by at least 5 points but granular with some small spots of light greenish verdigris on each side. No contact marks. Slightly glossy steel brown and chocolate. The date and legends all clear. EDS. Ex Dr. William H. Sheldon-Dorothy Paschal-Admiral Bitler, New Netherlands 12/7/57; 1025-Dr. Hiram T. Ward-Denis Loring-G. Lee Kuntz, Superior 10/6/91; 117-James E. Long 3/94-Clay Everhart 11/16/97.



338. 1796 S-105 R5+ G4. Draped Bust. Sharpness VG10 but porous, strongest on the head. Some reddish verdigris over IT in UNITED. A small rim bruise at the bust tip. The date is clear and legends complete except for weakness at OF AME due to an uneven strike. Dark olive and chocolate brown. EDS, Breen state I.

339. 1796 S-105 R5+ Fair-2. Draped Bust. Rather glossy chocolate brown, the reverse with reddish brown tones in protected areas. No verdigris or notable marks, just honest wear. The upper two thirds of the date is visible, as is about half the legend. Decent for the grade.



340. 1796 S-107 R5+ VG7. Draped Bust. Sharpness F12 or better but covered with uniform very fine granularity. No verdigris. A pair of dull scrapes at NT in CENT are the only marks. Dull grayish steel. The date and legends are bold. EDS.



341. 1796 S-107 R5+ G5. Draped Bust. Sharpness VG10 but covered with fine to moderate porosity, strongest on the portrait. No verdigris or notable marks. Slightly glossy bluish steel brown. The date and legends are clear. EDS, Breen state I.

342. 1796 S-110 R3+ G5. Draped Bust. Several points sharper but covered with very light corrosion. A small pit in the middle of the neck and some fine hairline scratches on the portrait. Slightly glossy dark steel and olive with lighter steel brown highpoints, the contrast helping bring out the details. The date and legends are complete, although a few places are a bit weak. E-MDS, Breen state III.



343. 1796 S-110 R3 VG7. Draped Bust. Rather glossy steel brown and chocolate. A thin line of minor roughness extends right from the center of the bust. Some microscopic roughness in the fields, but relatively decent for the grade. He date is strong and legends complete. Terminal die state, Breen state IX, with a cud break at TY. Ex John Ashby-Ken Mote 7/81.

344. 1796 S-111 R5- VG7. Draped Bust. Sharpness VF20 but the planchet is covered with fine granularity and there are some small pits on both sides, mostly in the left obverse field. No verdigris, a light rim bruise over ER in LIBERTY the notable mark. Matte olive brown. The date is bold and legends clear. LDS, Breen state VI.

345. 1796 S-114 R5 G4. Draped Bust. Glossy dark chocolate brown with lighter steel brown highpoints. Smooth surfaces. A pair of rim dent on the left side of the obverse are the only marks. Clear date and readable legends, although weak at ER in AMERICA. EDS.



346. 1796 S-115 R3+ G5. Draped Bust. Smooth, just a few tiny marks in the field off the chin and some weakness in the dentils over ME due to an incomplete planchet. Nicely retoned a glossy dark chocolate brown. MDS, Breen state V. The date and legends are clear, although the die crack weakens the 17.



347. 1796 S-116 R5 F12. Draped Bust. Nice glossy chocolate brown. Smooth and nearly free of marks, some very light contact marks in the field off the nose and a couple tiny hairline scratches at E in CENT the only ones worthy of any mention. The date is strong and legends complete. LS, Breen state II. An attractive example of this tough variety. Ex Ray Kelley -John D. Wright.



348. 1796 S-116 R5 VG10. Draped Bust. Sharpness VF25 but lightly corroded. No verdigris or marks. Slightly glossy dark olive with greenish patina suggesting burial for some time. The date and legends are strong. EDS, Breen state I. Ex Henry T. Hetter-Superior 9/21/98:1154.



349. 1796 S-117 R5+ G6. Draped Bust. Several points sharper with fine granularity covering the surfaces, strongest in the fields. No verdigris. A few tiny rim nicks the only marks, the strongest of these left of the lower curls. Dark olive and steel brown, the highpoints a few shades lighter. Clear date and legends. MDS, Breen state III. Ex Worldwide (Atlanta) 10/76-John D. Wright.

350. 1796 S-119 R3 VG7. Draped Bust. Glossy chocolate brown with lighter steel brown highpoints. A small chip in the field over the hair ribbon is the notable mark. The date and legends are strong. MDS, Breen state II. A variety that's more difficult to find in clean VG grade than mint state due to the Nichols Hoard. Ex Seacoast Coins, Portsmouth, NH, 3/70.



351. 1796 NC-4 R5+ AG3. Draped Bust. Sharpness VG8 but light corrosion covers most of the obverse and slightly stronger corrosion covers most of the reverse. No verdigris or contact marks. Slightly glossy very dark chocolate with some lighter brown highpoints, possibly retoned. The date is weakened by the roughness but is still visible, and the legend is complete except for S-OF. LDS, Breen state II. An extremely rare die state with a sunken retained cud break over ATES. Ex Coin Galleries 7/24/01:1626.

352. 1797 S-120b R2 G6. Gripped Edge. Several points sharper with a few rather fresh pin scratches in the field under the hair ribbon plus an older one from the throat down through the first 7 to the rim below. There are a half dozen rim nicks on each side, and one right of the Y has been smoothed. Glossy chocolate brown. The date and legends are strong. LDS, Breen state VI.

353. Group of four 1797 cents. S-120b Gripped edge R2 G5. S-134 R4 G5. S-140 R1 G5. S-141 R4+ G5. All are slightly sharper with defects but have a clear date. Lot of 4 coins.

354. Group of four 1797 cents. S-120b Gripped edge R2 G4+. S-131 Stemless wreath R2+ G4. S-136 R3- G5. S-141 R4+ G6. The last 2 are sharper but rough. All have clear date. Lot of 4 coins.



355. 1797 S-122 R5+ G5. Recolored a glossy chocolate and olive brown. The surfaces are mostly smooth, just a few shallow pitmarks in the right obverse field and a few more on the left center of the reverse. No verdigris. A few faint hairline scratches at the date. The date is clear and legends all readable, although CENT is faint. LDS, Breen state V. An extremely rare die state with a retained cud break at M. Ex Albany Coin Shop (Georgia) 12/70-John D. Wright.



356. 1797 S-124 R5+ G6. Rather glossy chocolate brown with medium brown highpoints. A couple very faint hairlines down the portrait and a tiny rim bruise left of the first A in AMERICA. The date is readable although the 179 and ONE CENT are weakened by the swelling associated with the die state. Everything else is clear. MDS, Breen state IV.



357. 1797 S-125 R5 VG7. Sharpness F15 or slightly better but lightly corroded with a dusting of greenish olive verdigris, mostly in protected areas. The only contact marks of any note are a fine hairline scratch in the field under the hair ribbon and a tiny rim bruise at CA. Excellent detail for the grade in spite of the minor roughness. Dark chocolate and olive brown with lighter chocolate brown highpoints. M-LDS. Breen state II, the obverse swelling well advanced.



358. 1797 S-125 R5 G6. A couple points sharper but moderately granular. NO verdigris, the only marks being a small patch of very fine porosity in the hair right of the ribbon. Medium steel brown with darker steel and olive brown in protected areas. The date and legends are clear. MDS. Breen state II. The obverse swelling is not as strong as on the previous example, the field left of the hair ribbon still unaffected. Ex Dr. Charles Ruby, sale #3 (2/75), lot 119.



359. 1797 S-126 R3 F12. Slightly sharper with extremely fine roughness covering the planchet and a dull scrape under ES-O. No verdigris or additional defects. Slightly glossy dark steel brown and olive. M-LDS. Breen state V. Ex John Ashby 5/80.

360. 1797 S-126 R3 VG7. Glossy chocolate and lighter steel brown. Some microscopic roughness in the reverse fields but overall the planchet is very nice for the grade. The only notable marks are a shallow planchet flake in the hair right of the ribbon and a fine hairline just left of the L. The date is bold and legends clear. LDS, the obverse die cracks very strong. Ex 1987 EAC sale, lot 140-1999 EAC sale, lot 194.



361. 1797 S-127 R4 VG7. Glossy chocolate and lighter steel brown with some darker chocolate tones on the lower portion of the obverse. The only defects are a light rim bruise left of the lower curls and a scuff over NITE. The date is strong and legends clear. LDS, Breen state VI. The obverse is covered with myriad die rust and cracks.



367. 1797 S-134 R4 F12. Slightly sharper with a shallow pitmark over ED in UNITED and a couple fine hairline scratches that meander near STATES. Glossy chocolate brown. LDS, Breen state V. Nice for the grade, the obverse details suggesting a higher grade.



362. 1797 S-127 R4 VG10. Sharpness VF20 with a half dozen rim bruises on each side, plus a few vertical hairline scratches on the portrait and a dull nick or planchet void at the N in CENT. Glossy dark chocolate brown. Very late die state, Breen VI. The obverse die rust and myriad cracks are strong. The date and legends are bold.

363. Group of four 1797 cents. S-127 R4 LDS Fair-2. S-128 R3- (1/000) Basal State-1. S-137 R2 AG3. S-139 R1 AG3. All have readable date. Some are slightly sharper with minor defects. Lot of 4 coins.

364. 1797 S-130 R2 VG8. Sharpness VF20 but slightly bent at the top of the obverse and opposing area at the bottom of the reverse. Some light nicks and minor roughness, the notable mark being a long nick near the rim off the chin. Glossy medium brown and chocolate with some olive in the center of the reverse. MDS, Breen state III. Ex Tom Reynolds-H. Whitaker 7/81.

365. 1797 S-132 R5+ Fair-2. Stemless Wreath. Glossy dark chocolate and olive brown. Some minor roughness in the fields and a dull scratch down the lower half of the portrait. The date is weak but can be made out and the stemless feature of the wreath is relatively clear. About half the legends are readable, although nothing is strong.

366. 1797 S-134 R4 VG10. Sharpness VF25 but there are too many small nicks for the sharpness grade and there is minor roughness on both sides, strongest on the reverse. Notable marks are a light rim bruise at M and a small pit at the 1 in the denominator. The obverse is glossy chocolate brown, the reverse darker chocolate and olive with lighter chocolate brown highpoints. EDS, Breen state I.

MINT STATE 1797 S-135



368. 1797 S-135 R3+ NGC graded MS61 Brown. EAC grade MS60. Frosty medium brown and chocolate with delicate bluish steel overtones in protected areas. No contact marks or carbon spots. The best identifying marks are a small spot of reddish brown toning at the upper junction of the U & N in UNITED and another under the left foot of the A in STATES. Both sides show many of the very tiny lint marks (from debris on the dies), strongest in the upper hair and on the lower portion of the reverse. These tiny marks are common on this variety and most of the other Nichols Hoard cents. MDS, Breen state III.



369. 1797 S-136 R3- F12. Nice glossy chocolate brown. A fine hairline under RICA, otherwise close to choice. LDS, Breen state V.

370. 1797 S-137 R2 F12+. Sharpness VF25 with extremely fine porosity covering both sides. No verdigris or notable marks. Slightly glossy dark steel and olive brown, the highpoints a few shades lighter. Sharply struck EDS, Breen state I.

371. 1797 S-138 R1 F12. Sharpness VF30 but lightly corroded. There is a moderate rim nick at TY and a smaller one right of the Y. No verdigris. Slightly glossy dark olive and steel, the fields covered with hints of greenish patina. E-MDS. Breen state II.

SPECTACULAR FLIPOVER TRIPLE STRIKE S-138



372. 1797 S-138 R1 VF25. Flipover Triple Strike. A spectacular early mint error. Choice glossy chocolate brown. The only defects are a dull scrape on the bust and a few very minor rim bruises and rim nicks, the only notable ones under the 9 and over the F of the final of the three strikes. The initial impression was well centered and the date from that strike shows at D-STA of the third strike. The second strike was off center about 25% to K-2.5 (in relation to the third strike). The planchet then flipped over and the third strike was well centered leaving the most obvious impression. Other impressions may have been involved in addition to the three mentioned. Outstanding eye appeal. Ex Emerald Hills Rare Coins-Len Lieberman, Bowers & Merena 5/21/92:1052-Gary Ruttenberg

CHOICE 1797 S-139



373. 1797 S-139 R1 EF45. Choice glossy chocolate and steel brown with traces of very faded mint color in protected areas of the reverse. The surfaces are smooth and very attractive, the only defect being a small rim nick at the second T in STATES. LDS. Breen state V.



374. 1797 S-141 R4+ VG10. Sharper by at least 5 points but the obverse is slightly rough. No verdigris and just a few minor contact marks. Recolored glossy bluish steel brown and chocolate with areas of darker steel on the obverse. M-LDS, Breen state III.



375. 1797 S-142 R5+ VG7. A point or two sharper with extremely fine porosity covering the planchet. No verdigris. Some very light rim bruises on each side, the notable ones under the 97. Slightly glossy chocolate and steel brown, the highpoints a few shades lighter. EDS, Breen state I. The left sides are softly struck, as usual, due to non-parallel die faces. Ex McLaughlin & Robinson Auctions 2/89:139-Steve Ellsworth collection 4/25/02.



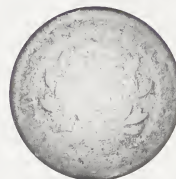
376. 1797 S-143 R5 F15. Stemless Wreath. Sharpness EF40 but covered with fine to moderate granularity, strongest at OF, AM, and ICA. No verdigris or notable signs of contact. Medium to dark steel brown, the rougher patches on the reverse a couple shades darker. Great detail, just rough. EDS. Ex J. R. Grellman-Dr. Philip W. Ralls 2/87-Del Bland 5/87-Dr. Willard J. Carmel, Jr., Superior 9/7/97:129-Steve Ellsworth collection 2/25/00.

377. 1797 S-143 R5 G4. Stemless Wreath. The obverse is slightly better, the reverse weaker. Glossy dark steel brown, the surfaces mostly smooth but some microscopic roughness in the fields. A very tiny rim nick under the 1 is the notable mark. The date is clear and the legends readable, although UNITED STATES and the denominator are weak. Ex R. S. Brown, Jr. 8/5/92 (privately).



378. 1797 S-143 R5 VG8. Stemless Wreath. Sharpness F12 but covered with extremely fine porosity. No verdigris or contact marks. A small pit at the leaf tip over O in ONE and a few more at F in OF. Slightly glossy medium brown with a swipe of dark olive brown at MERICA. Possibly retoned. MDS, the reverse slightly misaligned to K-7. Ex New York/New Jersey sale 3/59:671-New Netherlands Coin Co. #56:4993-Darwin B. Palmer-William R. T. Smith-F. Reineri 4/82-John D. Wright.

RARE 1797 NC-3



379. 1797 NC-3 R6-Fair-2+. The obverse is very slightly better while the reverse is a similar amount weaker. Glossy medium brown and chocolate with darker chocolate in protected areas. The surfaces are reasonably smooth and the only notable marks are a very light rim bruise at the top and bottom of the reverse. The date is clear and most of the reverse legend can be made out, although portions are weak. EDS, Breen state I. Ex Henry T. Hettger.

Double Struck 1798 S-145



380. 1798 S-145 R3 G6. Style I Hair. Double Struck. Glossy chocolate and steel brown with a couple small splashes of darker olive toning on the bottom of the obverse. The surfaces are nice and smooth, just a few tiny nicks and rim bruises from choice for the grade. LDS, Breen state V. Double struck showing two dates. The initial strike was properly centered, the second shifted 1-2 millimeters to K-10. Ex Stack's 6/10/96:1447.

The 2003 EAC Convention Sale, April 26, 2003

381. Group of five 1798 cents with Style I Hair. S-145 R3 G6. S-153 R3 LDS G5. S-154 R4+ G5. S-155 R3 Reverse of 1796 G5. S-157 R2 G4. All have a clear date and are slightly sharper with minor defects. Lot of 5 coins.



382. 1798 S-146 R5 VG8. Style I Hair. Sharpness VF20 with microscopic roughness under a rather glossy patina of medium brown and dark chocolate. No verdigris. A dull nick on the shoulder and another at the leaf tip under ST, plus a trio of small rim nicks at LIBE. LDS, Breen state IV. Ex Tom Reynolds 1996-John Cloutier 11/17/00-Clay Everhart.



383. 1798 S-147 R5 VG7. Style I Hair. A few points sharper with a rim dent left of the date and light corrosion at UNITED. Otherwise the surfaces are nice for the grade, just some tiny nicks scattered about. Glossy medium chocolate with some darker chocolate tones in protected areas and reddish chocolate in the rough area at UNITED. Ex Clay Everhart 4/26/98.



384. 1798 S-149 R5+ G5+. Style I Hair. Slightly sharper with dull surfaces that are covered with extremely fine roughness. No verdigris. There is a collection of very tiny pinpricks in the hair left of the eyebrow and a small rim nick right of the fraction. The date is strong and legends clear. Steel brown and olive MDS, Breen state II, with minor swelling at OF.

385. 1798/7 S-150 R5 G4. Overdate 8 over 7. Style I Hair. A few points sharper but light to moderate porosity covers both sides, strongest in the protected areas. No verdigris or marks. Slightly glossy dark chocolate and steel brown. The date and overdate are strong and the legends clear. Ex Dr. Charles L. Ruby, Part 3, Superior 2/10/75:142.



386. 1798/7 S-150 R5 G5. Overdate 8 over 7. Style I Hair. Several points sharper but covered with uniform very fine roughness. No verdigris or marks. Dark steel brown and olive. The date and overdate are sharp and the legends are clear. MDS.



387. 1798/7 S-151 R3+ VG7. Overdate 8 over 7. Style Hair. Glossy dark chocolate brown with lighter chocolate in protected areas of the obverse. Smooth and very attractive for the grade, a barely visible rim bruise at the lowest curls and a tiny rim nick at E in UNITED plus another under the right side of the fraction are the only marks. EDS, Breen state I. The date and overdate are bold and the legends are strong. Ex Jack Robinson, Superior 1/29/89:301.

388. 1798/7 S-151 R3+ G6. Overdate 8 over 7. Style Hair. Glossy dark steel brown and olive. A sharp nick under the hair ribbon and a smaller one under TY. Trivial roughness under the glossy patina but no verdigris. MDS, the overdate strong and legends clear. Ex McLaughlin & Robinson Auctions 2/87:302-J. R. Frankenfield, Superior 2/17/01:389

389. Group of five 1798 cents with Style I Hair. S-151 Overdate 8 over 7 R3+ AG3. S-152 Overdate large 8 over 7 R2+ AG3. S-159 R3+ AG3. S-160 R3+ G4. S-164 R4 Fair-2. All with a readable date, the two overdates clear. Most are slightly sharper with minor defects. Lot of 5 coins.

390. 1798 S-153 R3 VG7. Style I Hair. Sharpness VF30 but lightly corroded with some verdigris in protected areas of the reverse. A light rim bruise left of the L in LIBERTY is the only contact mark. Dark olive and steel. LDS with a strong rim cud break at the bust tip. The date and legends are bold. Ex 1984 EAC Sale, lot 180.

391. 1798 S-154 R4+ G6. Style I Hair. Nice glossy chocolate brown. A couple tiny planchet chips high on the neck and a fine hairline scratch down from the tip of the hair ribbon. MDS with swelling at TED. Struck slightly off center to K-11. The date is bold and legends clear. Ex 2002 EAC Sale, lot 256.

The 2003 EAC Convention Sale, April 26, 2003

392. 1798 S-157 R2 VG8. Style I Hair. Steel brown and chocolate. Some microscopic roughness and a few tiny pitmarks in the field before the face. No verdigris or notable signs of contact. M-LDS. The date is clear and legends readable.

393. 1798 S-160 R3+ VG8+. Style I Hair. A couple points sharper with a fine hairline scratch arcing from the hair left of the eye through the chin to the bust tip. The surfaces are relatively smooth but there is some minor verdigris at ES and OF. Slightly glossy dark olive brown with lighter steel brown highpoints. LDS, Breen state V. The date and legends are bold. Ex Anderson Dupont, Stack's 9/54:212-Dorothy Paschal-New Netherlands Coin Co. 12/57:1084-Edward H. Schwartz, Abe Kosoff 10/61:183-. E. Naftzger, Jr., New Netherlands Coin Co 11/73:475-Superior 2/2/92:849-March Wells.

394. 1798 S-163 R4- G5. Style I Hair. Glossy medium brown. A faint hairline down through the bust tip and a tiny punchmark over the numerator of the fraction. The date and legends are clear. MDS.

395. Group of four 1798 cents with Style II Hair. S-167 R1 VG8. S-172 R2+ VG7. S-185 R2 VLDS VG7. S-187 R1 Reverse rotated 20 degrees CCW VG8. A couple are slightly sharper with minor defects. All glossy brown with strong date. A decent group. Lot of 4 coins.

396. Pair of large cents, 1798 & 1807. 1798 S-167 R1 G6. Clipped planchet. Sharpness VF25 but corroded. 1807/6 S-273 Overdate large 7 over 6 R1 VG7. Slightly sharper with minor roughness. Lot of 2 coins.

397. Group of five 1798 cents with Style II Hair. S-167 R1 LDS with rim cud at first T in STATES G6. S-169 R3 G6. S-170 R3 G6. S-173 R3- Reverse rotated 60 degrees CCW G6. S-184 R2- G5. Some are slightly sharper with minor defects. All have clear date. Lot of 5 coins.



398. 1798 S-169 R3 F15. Style II Hair. Sharpness VF30 with minor roughness, mostly on the upper half of the obverse. No verdigris or contact marks. Glossy dark olive and chocolate brown with medium brown highpoints. The date and legends are bold.

399. Group of six 1798 cents with Style II Hair. S-172 R2+ AG3. S-173 R3- AG3. S-175 R4 AG3. S-177 R5- AG3. S-184 R2- G4. S-187 R1 AG3. Some are slightly sharper with defects. All have a clear date. Lot of 6 coins.

400. Group of five 1798 cents with Style II Hair. S-174 R2- G5. S-179 R3 G5. S-181 R3 G5. S-184 R2- G5. S-185 R2 G5. Some are slightly sharper with minor defects.

401. 1798 S-175 R4 G6. Style II Hair. A couple points sharper with very fine roughness in the fields. A few faint hairlines on the portrait but no verdigris. Rather glossy dark olive brown with lighter steel brown highpoints. Date and legends strong. MDS, Breen state III. Ex Superior 2/2/92:868.

402. 1798 S-175 R4 G6. Style II Hair. Sharpness F12 with fine porosity covering the fields, strongest on the obverse. A dull nick over the chin and another left of the lower curls, plus one right of the fraction. Slightly glossy steel brown and chocolate with reddish brown in some protected areas. Date and legends all strong. MDS, Breen state IV.



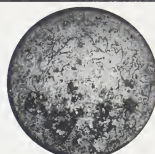
403. 1798 S-176 R4 VG7. Style II Hair. A few points sharper with a thin scratch close above the bust and some minor roughness on both sides, including two thin planchet voids high on the cheek. Glossy dark chocolate with lighter chocolate brown highpoints. E-MDS. Date and legends bold.



404. 1798 S-177 R5- VG10. Style II Hair. A couple points sharper with fine abrasions in the field over the bust tip. Nice glossy medium brown. M-LDS, Breen state IV.

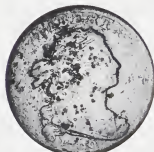


405. 1798 S-177 R5- VG7. Style II Hair. Clipped planchet. Slightly sharper with a few light marks, including a nick at the base of the neck and a small rim bruise at the first S in STATES. A small, curved planchet clip left of the lower curls and over AT in STATES, as struck. Glossy brown. LDS, Breen state V.



406. 1798 S-181 R3 F15. Style II Hair. Nice glossy chocolate brown. Just a few trivial contact marks, including a fine hairline scratch from the right top of T in LIBERTY down to the forehead and another even fainter one from the nose to the dentils opposite the neck. M-LDS, Breen state III late, the reverse rotated 45 degrees CCW.

408. 1799/8 S-188 R4 AG3. Overdate 9 over 8. Sharpness G6 with fine porosity covering the planchet and some strong corrosion on the lower half of the reverse. This corroded area contains some reddish brown and greenish verdigris. Slightly glossy dark steel brown and olive. The date is strong for the grade, even the bottoms of the digits visible, and the overdate is relatively strong. LIBERTY is clear and most of the reverse legend remains visible, although the fraction and UNIT are hidden by the corrosion in that area. Not too bad considering the unusual strength of the date. Ex -Dr. William E. Hopkins.



409. 1799 S-189 R2+ G4. Sharpness VG10 but there are many moderate pits on the obverse and a half dozen more on the reverse. Most of the pits have greenish verdigris in their bottoms. Otherwise the planchet and surfaces are nice, relatively smooth and free of notable marks or other defects. Glossy chocolate brown with green specks in the pits and some reddish verdigris among the pits in the hair. The date is clear, the bottoms of the digits just starting to fade into the rim below. LIBERTY and the reverse legends are complete. MDS with the small chip under E in ONE. Ex Denis Loring-Dr. William E. Hopkins.



407. 1798 S-182 R4 VF20. Style II Hair. Slightly sharper with a few too many light contact marks for the sharpness grade, including a tiny rim nick left of the hair ribbon and a dull rim nick at the second S in STATES. Nice glossy chocolate brown. MDS. Breen state II. CC#12 in the Noyes census. Ex Mayflower Coin Auction 1/63:102-Jackson Storm 8/1/84-Bob Matthews, Superior 5/28/89:328-J. R. Frankenfield, Superior 2/17/01:433.

410. "1799" VG7. A 1798 S-167 with the date skillfully altered to 1799. Several points sharper but a scuff of scratches covers the cheek and forehead. Glossy dark chocolate.

411. "1799" VF20. A 1798 S-184 with the date altered to 1799. Sharper but dark and covered with very fine roughness. The 8 was altered to a 9 and then the entire date was burnished to hide the alteration leaving the date weak while the rest of the coin has sharp details. A relatively poor job.

The 2003 EAC Convention Sale, April 26, 2003

412. 1800/1798 S-190 R3 VG7. Overdate 1800 over 798. Style I Hair. Glossy steel brown with darker olive brown in protected areas. Smooth and attractive, free of notable defects. The date and legends are clear. EDS, Breen state I. Ex Superior 2/2/92:891.

413. 1800/1798 S-190 R3 G6. Overdate 1800 over 798. Style I Hair. Several points sharper but covered with fine granularity. A few fine hairline scratches on the reverse and some dark crud in protected areas of the obverse. Slightly glossy dark steel brown with darker olive in protected areas of the reverse. The date and legends are clear.

414. Trio of 1800/1798 overdate cents. S-190 R3 VG8. Slightly sharper with some light hairline scratches above the bust and fine roughness on the left third of the reverse. Glossy chocolate brown. S-191 R2 G6. Sharpness F15 but covered with fine porosity. Slightly glossy olive and chocolate brown. S-196 R1 G4. Slightly sharper with nicks and patches of roughness. Slightly glossy dark olive and steel brown. Lot of 3 coins.

415. Group of four 1800/1798 overdate cents. S-190 R3 G4. S-193 R4 AG3. S-195 R5 AG3. S-196 R1 G4. All have a readable date with the overdate visible. Lot of 4 coins.



416. 1800/1798 S-191 R2 F12. Overdate 1800 over 798. Style I Hair. Slightly sharper with a few too many tiny nicks for the sharpness grade, including a tiny rim nick over E in LIBERTY. Glossy chocolate brown with a small splash of darker olive on the lower curls. LDS, Breen state VII. Ex Norweb collection, Bowers & Merena 11/14/88:2783-Darwin B Palmer 8/29/93-March Wells.



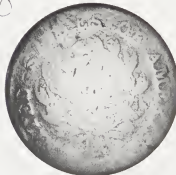
417. 1800/179 S-192 R3 F15. Overdate 1800 over 79. Style II Hair. Five points sharper with a pitmark on the bust. Otherwise smooth and free of notable defects. Glossy chocolate brown and steel. M-LDS, Breen state III. The overdate is bold. Ex McLaughlin & Robinson Auctions 12/87:233-J. R. Frankenfield, Superior 2/17/01:450-March Wells.

418. Pair of 1800 cents, both ex Dr. Charles Ruby. S-192 Overdate 1800 over 79 with Style II Hair G6. Sharpness F15 but granular under a glossy dark steel brown patina. S-205 R4 AG3. Sharper but slightly rough. Rather glossy dark chocolate. Both with a clear date. Lots 537 and 551 of the Dr. Charles L. Ruby sale, part 1, Superior 2/11/74. Lot of 2 coins.

419. 1800 S-193 R4 VG7. Overdate 1800 over 79. Style II Hair. Sharpness F15 with a dull dent across the bust tip that caused a slight bend in the planchet. Otherwise some minor nicks on both sides and tiny pitmarks in the center of the reverse. Rather glossy steel brown with some darker olive in protected areas. The date is bold and the overdate clear. MDS, Breen state II. Ex Superior 2/8/99:2095.

420. 1800/79 S-196 R1 VG10. Overdate 1800 over 79. Style II Hair. Nice glossy chocolate brown with lighter brown highpoints. A thin horizontal nick in the hair at the curl under the ribbon. MDS, Breen state II. Sharp and attractive for the grade. Ex Superior 2/2/92:900.

421. Group of five 1800 cents. S-197 R1 Fair-2. Counterstamped J. PENN across the obverse. S-203 R3- G4. S-205 R4 G4. S-208 R3 AG3. S-209 R3 AG3. Some are slightly sharper with minor roughness. All have a clear date. Lot of 5 coins.



422. 1800 S-198 R5+ AG3. Glossy chocolate brown. The planchet is smooth and free of marks but very slightly bent causing uneven wear. At least half the surface is clearly better than AG3, but TAT and the center of the reverse are weaker. The date is bold. Ex Denis Loring-Dr. William E. Hopkins.

423. 1800 S-199 R4 G5. Fairly glossy chocolate and steel brown with darker olive brown on the lower half of the obverse. A few small, light rim bruises. Strong date. EDS.



424. 1800 S-199 R4 G6. Slightly sharper but reoled glossy chocolate and steel brown with golden light brown on the obverse highpoints. A dull rim bruise left of the lower curl and a spot of carbon on the A in STATES. MDS, Breen state VI.

CHOICE LDS 1800 S-200



426. 1800 S-200 R3 G4. A couple points sharper but very lightly corroded, the fine roughness under a slightly glossy dark olive patina. A small rim bruise at U. Strong date and readable legends. EDS.



427. 1800 S-200 R3 G6. A couple points sharper with some fine hairline scratches on the obverse and minor roughness on both sides. Rather glossy chocolate brown, the eye appeal decent in spite of the defects. E-MDS, the date and legends strong.

428. 1800 S-200 R3 G5. Slightly sharper with microscopic roughness under a glossy dark olive and brown patina. A light rim bruise at N in UNITED. Strong date and legends. LDS.

429. 1800 S-201 R5 AG3. A couple points sharper with myriad fine hairline scratches covering both sides and some shallow pits in the center of the reverse. Fine granularity covers the planchet. The date is clear and legends nearly complete.



430. 1800 S-202 R4+ VG7. Slightly sharper with some shallow pits scattered about the obverse and a rim bruise at ES in STATES. Otherwise a nice glossy chocolate brown with smooth surfaces. E-MDS, Breen state II.



431. 1800 S-202 R4+ G5. Slightly sharper with a dull, deep scratch between the O & N in ONE up to the leaf under the second S in STATES. Minor roughness on the reverse and some small rim nicks on both sides. The obverse is smooth. Glossy chocolate brown with darker olive brown in protected areas. The date and legends are clear except where weakened by the usual die swelling associated with the late state. Ex Dr. Charles L. Ruby, part 3, Superior 2/10/75:189-Dr. William E. Hopkins.



425. 1800 S-200 R3 F15+. Choice glossy chocolate brown. A light rim bruise under the bust tip and a dull rim nick left of the hair ribbon. Excellent eye appeal, very nice for the grade. LDS, Breen state IX.



432. 1800 S-202 R4+ VG10. Sharpness VF25 or better but granular, strongest in the field over the bust. No verdigris, the only notable mark being a short but relatively deep scar over EN in CENT. Chocolate brown, slightly glossy in spite of the roughness. M-LDS. Breen state IV.



433. 1800 S-203 R3- F15. Glossy chocolate brown with lighter brown highpoints. A few light nicks scattered about the obverse and a faint hairline across the denominator, plus a few very tiny pits under the right edge of the fraction. Overall smooth and attractive. LDS. Breen state V. Ex 2002 EAC Sale, lot 290.

434. Group of four 1800 cents. S-206 R3+ G5. S-207 R3+ G5. S-209 R3 G6. S-212 R3- G5. A couple are slightly sharper with minor defects. All have a clear date. Lot of 4 coins.

435. 1800 S-207 R3+ G4. Slightly sharper with very fine granularity covering the surfaces and a sharp rim nick right of the nose tip. No verdigris or other marks. Dark steel brown and chocolate. MDS. Breen state III.

LATE DIE STATE 1800 S-208



436. 1800 S-208 R3 VF20. Sharpness VF35 with extremely fine granularity hiding under a glossy dark olive patina. A dull, light scratch shows in the field above the bust tip and an even fainter one slants down the cheek fading out in the upper portion of the neck. LDS. Breen state IV. This is the Noyes plate coin for the late die state. Ex 1979 EAC Sale, lot 109-G. Lee Kuntz, Superior 10/6/91:231.

DOUBLE STRUCK 1800 S-208



437. 1800 S-208 R3 VG10+. Double struck. Nice glossy chocolate and steel brown. Slightly sharper with a trio of dull nicks or planchet voids in the hair below the ear and a small nick on the base of 1 in UNITED, plus a tiny pitmark touching the ribbon over the fraction. Double struck, the second strike rotated nearly 180 degrees from the first. The undertype BERTY shows strongly where the date should be and an inverted fraction shows clearly at the top of the reverse. A terrific error strike with excellent eye appeal in spite of the minor defects, which are easily missed. Ex Denis Loring 4/72-John D. Wright.



438. 1800 S-210 R5+ AG3. Sharper but corroded. No verdigris or notable marks, but it is butt-ugly. The date is visible and the legends complete. Slightly glossy very dark steel with some splashes of lighter reddish brown. EDS, Breen state I. Ex Superior 2/7/2000:1680-Superior 2/18/02:1241.



443. 1801 S-215 R5 VG10. Sharpness VF25 or slightly better but there is a dull and rather deep scratch in the hair under E down to the upper part of the neck, plus a trio of lighter dull scratches on the left side of the obverse, mostly blending with the clashmarks and die cracks. A few small spots of verdigris around the date and LIBERTY. Otherwise the planchet and surfaces are smooth and attractive. Glossy dark chocolate and olive brown with lighter steel brown highpoints. M-LDS, Breen state VII. Ex Dr. Charles L. Ruby, part 1. Superior 2/11/74:563.



439. 1800 S-212 R3- F12. Sharpness VF20 with light nicks scattered about both sides plus a relatively strong nick in the field before the nose and rim bruises opposite the neck, at NI in UNITED, and over O in OF. Otherwise a nice glossy chocolate and steel brown with smooth surfaces. MDS, Breen state III. Ex 2001 EAC Sale, lot 256.



440. 1801 S-214 R3+ F12. Sharpness VF30 with patches of pitting on both sides, strongest in the hair under BER and above ONE. Most of the planchet is a nice smooth glossy chocolate brown, but the pits are a big detractor. A small rim bruise right of the fraction is the only notable sign of contact. MDS, Breen state II. Ex Jack Robinson 2/87.



441. 1801 S-214 R3+ VG10. Slightly sharper with a scuff on the lowest curl and rim at the left, plus light rim bruises at ERT and a trio of dull rim nicks right of the bust tip. Glossy chocolate brown. EDS, Breen state I. Ex Darwin B. Palmer-Gordon Wrubel 10/70.



442. 1801 S-214 R3+ VG8. A couple points sharper with minor roughness near the rim left of the lower curls. Recolored glossy chocolate brown and tan with some underlying very faded red on the obverse. MDS, Breen state II.



444. 1801 S-218 R5+ G4. 3-Error Reverse with LIBERTY right. Nice glossy chocolate brown. The surfaces are relatively smooth, some trivial roughness in protected areas under the glossy natural patina. There is a dull, light curved mark on the neck, a tiny rim bruise at S-O, and a shallow chip on the rim at the second A in AMERICA. The date is clear, although the bottom edges of the digits fade into the rim below. The legends are easily readable and the 3 reverse die-cutter errors are strong. Nice for the grade, some of the details suggesting a higher grade. C. Douglas Smith-William R. T. Smith-Dr. William E. Hopkins.

445. Group of four 1801 cents. S-216 R1 VG7. S-222 R1 G5. S-223 R1 Error fraction 1/000 G6. S-224 R1 G6. Some are slightly sharper with minor defects. All have a clear date. Lot of 4 coins.

446. Group of four 1801 cents. S-216 R1 AG3. S-221 R2 Corrected denominator 100/000 LDS with cud over STAT AG3. S-224 R1 AG3. S-224 R1 G5. Some are slightly sharper with minor defects. All with readable date. Lot of 4 coins.

447. 1801 S-219 R2 AG3. 3-Error Reverse. Glossy dark olive brown with medium brown highpoints. Some small nicks left of the lower curls and a rim bruise at CA. The date and 3 reverse errors are clear, but the legend on the upper half of the reverse is weak or missing. EDS.



448. 1801 S-219 R2 VG7. 3-Error Reverse. Sharpness F15 but granular. A rim nick opposite the mouth is the only mark. Slightly glossy very dark olive and steel. The date and 3 reverse errors are clear. MDS. Breen state IV.



449. 1801 S-220 R3 VG10. Error Fraction 1/000. Sharpness VF20 but with minor roughness and verdigris specks under a glossy dark olive patina. No contact marks. E-MDS. The error fraction is bold.

450. 1801 S-221 R2 VG7. Corrected Denominator 100/000. Sharpness F12 with some minor roughness and light marks, including a hairline scratch in the field close behind the head and a small dig on the chin. Slightly glossy chocolate and olive brown with medium brown highpoints. EDS. The date and legends are clear.

RARE LATE STATE 1801 NC-1



451. 1801 NC-1 R6 VG7. Slightly sharper with a short dig in the field off the chin, a thinner one on the left side of E in LIBERTY, and a chip at the bottom of ON in ONE. There is some microscopic roughness in the field under the natural patina, which is mostly smooth. Rather glossy dark olive brown with glossy medium brown highpoints, the two-tone look accenting the details. The date and legends are all clear. LDS. Breen state II, with a cud break connecting the tops of TES to the rim above. Not perfect but rather decent for the grade. Ex C. Douglas Smith-Dr. William E. Hopkins.

1801 NC-3 R6+



452. 1801 NC-3 R6+ G5. Error Fraction 1/000. Clipped planchet. Sharpness F12 but granular. No verdigris. The only marks are a tiny rim bruise under the 01 and a dull, thin scrape across the center of the neck into the hair at left, and this mark is nicely hidden in the roughness and patina. A small, curved planchet clip affects the dentils over BE in LIBERTY and under the fraction. The date and legends are full. Appears comparable to the Breen plate coin. Ex Superior 2/16/76:1466-Dr. William E. Hopkins.

453. Trio of 1802 cents. S-225 R3- VG8. S-228 R2 Error Fraction 1/000 VG7. S-231 R1 Stemless Wreath VG8. The first 2 are sharper with minor defects. All have a strong date. Lot of 3 coins.

454. Group of four 1802 cents. S-226 R3 G6. S-227 R2 G5. S-230 R1 G6. S-233 R2+ G5. The first two are slightly sharper with minor defects. All have a clear date. Lot of 4 coins.

455. Group of four 1802 cents. S-229 R2+ VG7. S-238 R4 VG8. S-239 R3 VG7. S-242 R2 VG7. All are sharper with defects but have a full, clear date. Lot of 4 coins.



456. 1802 S-228 R2 VF20. Error Fraction 1/000. Slightly sharper with faint traces of microscopic roughness under an attractive glossy chocolate brown patina. A tiny, light hairline scratch close behind the head is the only notable mark. E-MDS. Breen state II. The error fraction is strong. Ex 1989 EAC Sale, lot 126-McCawley & Grellman Auctions 1/9/93:104.



458. 1802 S-231 R1 VF30+. Stemless Wreath. Glossy medium brown and chocolate with small splashes of darker chocolate and olive brown, mostly on the obverse. The surfaces are smooth and attractive, the only notable mark a dull, light rim nick at E in STATES. M-LDS. Breen state VIII. Ex Ira & Larry Goldberg Auctions 2/2000:120.

CHOICE STEMLESS WREATH 1802 S-231



457. 1802 S-231 R1 EF45. Stemless Wreath. Choice glossy chocolate and steel brown with frosty light brown and golden tan faded down from mint color in protected areas. A small pinprick on the base of in OF is the only notable mark. Excellent eye appeal. MDS, Breen state IV. The bust tip and opposing area at OF are weakly struck.

EQUAL CC#8 1802 S-238 EX HY HALPERN



459. 1802 S-238 R4 VF20. Glossy chocolate and olive brown. There is a tiny, very light rim bruise under the 8 and a few fine hairline scratches at STATE. M-LDS. Breen state IV. An attractive example, tied for CC#8, and the finest is only VF30. Ex Herman Halpern, Stack's 3/16/88:217.

460. Group of four 1802 cents. S-233 R2+ G5. S-234 R3 G6. S-237 R3 G6 (ex Ruby part I, lot 590) S-240 R3+ EDS G6. A couple are slightly sharper with minor defects. All have a clear date. Lot of 4 coins.

461. Group of four 1802 cents. S-235 R3+ AG3. S-236 R1 AG3 (1975 EAC:745) S-241 R1 Stemless Wreath LDS with cud at F-A AG3. S-241 R1 Stemless Wreath with reverse rotated 40 degrees CCW AG3 (1975 EAC:751). A couple are slightly sharper with minor defects. All have a clear date. Lot of 4 coins.



462. 1802 S-239 R3 VG8+. Rather glossy steel brown and chocolate. Mostly smooth but there is extremely fine roughness in the obverse fields. A dull rim nick at RT in LIBERTY is the only notable mark. LDS, Breen state V, the area between the die cracks before the face raised into a retained cud.



463. 1802 S-241 R1 VF35. Stemless Wreath with Double Fraction Bar. Attractive glossy chocolate and steel brown. Smooth and free of defects. E-MDS, Breen state I early. Ex 1988 FUN Sale, Mid-American Rare Coin Auctions, 1/8/88:54.



464. 1802 NC-1 R5+ VG7. Sharpness near F12 but covered with uniform very fine porosity. No verdigris or notable pits, but there are several fresh, very light abrasions on the obverse highpoints. Two small, dull rim nicks at D in UNITED are the only other notable defects. Recolored steel brown mottled with some lighter and darker tones. Might benefit from a better retoning. LDS, the bisecting obverse die crack visible, strongest from the rim down to the earlobe.

465. 1803 S-243 R2+ VG10. Stemless Wreath with Double Fraction Bar. Slightly sharper with a couple light rim bruises, the strongest ones at I in LIBERTY and the first S in STATES. Rather glossy dark olive and steel brown with traces of microscopic roughness under the patina. EDS, Breen state I. The date and die cutter errors are strong.

466. Group of four 1803 cents. S-243 R2+ Stemless Wreath G5. LDS with obverse rim cuds. (Ex 1975 EAC:755) S-244 R4 G5. S-249 R2 Corrected Fraction 100/000 G5. The corrected fraction is strong. (Ex Ruby III, lot 233) S-254 R2 G5. Some are sharper with defects. All have a clear date. Lot of 4 coins.

467. Group of ten 1803 cents. S-243 AG3. S-246 G4. S-247 G4. S-248 G4. S-249 (100/000) AG3. S-252 G4. S-253 G4. S-254 AG3. S-263 Fair-2 (ex 1975 EAC:780) S-265 Large date and fraction G4. Some are sharper with defects. All have a clear date. Lot of 10 coins.

468. Group of four 1803 cents, all grading net G6. S-245 S-252 S-255 S-263 EDS. A couple are sharper with defects.



469. 1803 S-246 R3 VF25. Ten points sharper but the obverse was burnished leaving faint hairline scratches covering the face, neck, bust, and obverse fields. (The reason for the burnishing is unknown since the planchet and surfaces appear to have been outstanding anyway.) It takes a strong glass to see these lines, and the naked-eye appeal is outstanding. No spots or marks. Attractive glossy chocolate brown with some lighter brown in protected areas. EMDS, Breen state II, with a tiny "mumps" break under the chin.

470. 1803 S-246 R3 VG8+. Sharpness F12 with too many small nicks for the sharpness grade, including a small rim bruise opposite the chin. Glossy dark chocolate and steel brown with light brown in protected areas. LDS. Breen state IV, with a cud break at STA.



471. 1803 S-247 R3 VF20+. Slightly sharper with a light rim bruise under the 3 and another smaller one under the right side of the fraction, plus a faint hairline down from the curl on the neck to the bust line. Otherwise smooth and quite attractive for the grade. Glossy chocolate brown. EDS. Breen state I. Ex 2000 EAC Sale, lot 244.

472. Trio of 1803 cents. S-248 R4+ VG7. S-257 R2 VG8. S-258 R1 VG8. All are slightly sharper with minor defects but a strong date. Lot of 3 coins.

473. 1803 S-251 R3- VG7. Glossy chocolate and steel brown. Smooth, just a few trivial marks.

474. 1803 S-253 R3 EF45. Slightly sharper with some small, dull nicks scattered about the obverse, mostly in the field before the neck and left of the hair ribbon. A single dull nick on the neck is the most obvious of these marks. Glossy mottled mix of chocolate, olive, and golden light brown. Possibly retoned. M-LDS. Breen state IV.



475. 1803 S-255 R1 AU50. Sharpness closer to mint state with some extremely faint hairlines covering the obverse fields. Glossy light olive and medium brown with some frosty lighter brown tones in protected areas. EDS, Breen state I. Sharply struck and quite attractive.



476. 1803 S-255 R1 VF35. Glossy dark steel, possibly retoned. The surfaces are smooth and free of any notable marks. EDS, Breen state I. Ex Jonathan Kern 7/89.



477. 1803 S-255 R1 F15. Ten points sharper with hairline scratches on the head and shoulder. Counterstamped "DS" in the field above the bust. Rather glossy chocolate and darker steel brown with some lighter brown tones in protected areas. LDS, Breen state IV, with a cud break over STA.

478. Pair of 1803 cents. S-255 R1 VG10. S-256 R3 F12. Both are sharper but granular. Lot of 2 coins.



479. 1803 S-258 R1 VF35. Large Fraction. Nice glossy chocolate brown with a small patch of reddish brown toning high on the neck. A tiny pinprick just left of the L in LIBERTY is the best identifying mark. M-LDS, Breen state III. Ex Bowers & Merena 6/10/91:624.

480. S-259 R4 F15. Ten points sharper with too many light nicks for the sharpness grade, plus a pitmark on the rim at the first A in AMERICA. Mostly smooth but there is some very fine roughness in the reverse field. Rather glossy chocolate and steel brown with a few small spots of darker chocolate brown on both sides. EDS, Breen state I. This is the Breen plate coin for the early die state. Ex Michael Graham-Doug Bird-Gary Ruttenberg-R. S. Brown, Jr., Superior 6/1/98:123.

481. S-259 R4 VG8. Glossy chocolate brown. Some tiny nicks on both sides plus a dull rim nick at F in OF and a rim bruise at ME. MDS. Ex Willard C. Blaisdell-1977 EAC Sale, lot 69-Dr. William E. Hopkins.

482. 1803 S-259 R4 G6. A couple points sharper with very fine roughness under a glossy dark olive and lighter steel brown patina. The planchet is slightly bent and there are a few light rim bruises on each side. M-LDS. Breen state III, with a slightly sunken retained cud break over TAT.

483. Trio of 1803 cents. S-260 R1 VG8. S-261 R2+ VG8. S-263 R3 VG8. All are sharper with defects. Lot of 3 coins.



484. 1802 S-262 R3 VG7. Sharpness F12 with fine roughness covering the fields and a few small pits at the bust tip. A small rim bruise at F in OF. Slightly glossy dark steel brown.

1803 S-264 LARGE DATE SMALL FRACTION



485. 1803 S-264 R4+ VG8. Large Date with Small Fraction. Sharpness VF30 with significant pitting on the obverse, strongest in the field at the bust. No verdigris. The reverse is nearly smooth, just a few traces of extremely fine roughness in protected areas. A light rim bruise at CA is the only contact mark worthy of mention. Rather glossy very dark steel and olive brown. The date is bold and the fraction is strong. MDS. Breen state II. Ex Bowers & Ruddy 4/6/78:888-Bowers & Merena 11/18/94:2058.



486. 1803 S-265 R4 F12. Large Date and Fraction. Slightly glossy olive brown with medium brown and chocolate highpoints. The surfaces are decent but do show some microscopic roughness and there are traces of very light verdigris in protected areas of the reverse. No notable signs of contact. M-LDS. BR. state VI.



487. 1804 S-266c R2 AG3. A couple points sharper with more than a dozen shallow cuts around the obverse rim. Slightly glossy olive and steel with lighter steel brown highpoints. The surfaces are covered with very fine roughness, but there are no pits or verdigris. The date is mostly clear, the bottom edge fading into the rim below. The legends are all readable, although STATES is weak. LDS with the cud breaks at RTY and MERIC.



488. 1804 Restrike F15. Mostly glossy chocolate brown with some areas of darker olive brown on the obverse. A few small nicks on the shoulder and neck, but mostly just well worn, which is quite unusual for this "restrike" made just for collectors.



489. 1805 S-268 R3 F12. Sharpness VF20 with some greenish verdigris in protected areas at the back of the portrait and in the left side of the wreath. Very fine granularity covers much of the fields. Rather glossy dark olive and steel brown. Ex Denis Loring 5/73-Dr. William E. Hopkins.



490. 1807 S-271 R1 F15. Comet Obverse. Nice glossy medium steel brown and chocolate. Smooth and free of any notable defects. LDS with the "Comet" flaw strong. A very nice example for the grade. Ex Stephen Fischer 4/98-Dr. Philip Ralls 4/20/202-Del Bland.

1807 S-272 SMALL 7 OVER 6 EX ROBBIE BROWN



491. 1807/6 S-272 R4+ VG8. Overdate Small 7 over 6. Sharpness F12 with very fine granularity covering the planchet, strongest on the reverse. No verdigris. The only marks are a tiny dig on the forehead and a couple small nicks in the field before the face. The overdate is bold and the legends clear. Slightly glossy dark olive and steel brown. Not perfect but not at all bad for this important variety, one of Dr. Sheldon's "Famous Four." Ex R. S. Brown, Jr., Superior 9/30/86:399.

GOLDEN BISCUIT
1807 /6 S-273



492. 1807/6 S-273 R1 AU55. Very close to mint state but there is a trail of three small, light nicks forming a necklace at the throat. Otherwise this cent is gorgeous, great satiny luster and eye appeal. Lustrous tan and light brown with a small area of reddish brown toning in the field above the hair ribbon and hints of very faded underlying mint red on the reverse. Just the lightest touch of rub on the highest points from mint state. LDS, Breen state IV, with a clear rim cud break at STA. Ex Charles F. Henig, Stack's 10/78:871-Denis Loring-R. S. Brown, Jr., Superior 9/30/86:401-Dr. Philip Ralls-2002 EAC Sale, lot 354.



493. 1807 S-274 R2+ VF30. Sharpness EF45 but lightly burnished, now retoned a glossy reddish chocolate and steel brown with frosty light brown in protected areas. There is a tiny rim bruise at the second A in AMERICA and traces of very light crud or verdigris in a few protected areas of the reverse, mostly over AM. Sharply struck except for the bust and opposing area at F in OF, which are flat. MDS. Breen state III. A variety that's difficult to find in high grade, this piece in the lower end of the condition census in spite of the minor defects. Ex Superior 2/3/91:751-Tom Reynolds 4/22/93-C. Douglas Smith-Del Bland-Rod Burress 3/99-March Wells.



494. 1808 S-278 R3 VF20. Broadstruck. Ten points sharper with patches of extremely fine roughness on the reverse but no verdigris or marks. Lightly cleaned, now nicely retoned a glossy medium brown. LDS and broadstruck, a dramatic error resulting in a 30.5 millimeter diameter. Great eye appeal in spite of the minor defects. This example is plated in Breen's "Oops" chapter where he describes the types of errors found on early cents. (See page 841). Ex 1978 ANA Sale, Bowers & Ruddy 9/78:1894-John D. Wright.



495. 1809 S-280 R2 F12. Sharpness VF25 but covered with uniform fine granularity. No verdigris, pits, or notable signs of contact. Chocolate and olive brown, the surfaces rather glossy in spite of the fine roughness. MDS.

496. Group of six 1807 cents. S-271 R1 Comet Obverse AG3. S-273 R1 Overdate Large 7 over 6 G4. S-274 R2+ G6. S-275 R2 VG8. S-276 R1 G6 Reverse rotated 35 degrees CCW. S-276 R1 Fair-2 Reverse not rotated. All have readable date. Most are sharper with minor defects. Lot of 6 coins.

497. Pair of 1808 cents. S-277 R2 G6 Later die state with star 1 missing. S-278 R3 VG7. Clear dates with no significant defects. Lot of 2 coins.

498. Group of four 1810 Turban Head cents. 1810/09 S-281 R1 AG3. S-283 R2 AG3. S-284 R3 G5. S-285 R2 G4. All are decent brown. A couple are sharper with minor defects. All have a clear date. Lot of 4 coins.



499. 1810 S-282 R2 VF20. Nice glossy chocolate brown with frosty flowline luster in protected areas. The planchet is smooth, free of roughness or verdigris. The only marks are a thin nick close above the head and a dull rim nick at ES in STATES. An attractive example for the grade. M-LDS. Breen state III.

500. Group of five Turban Head cents, 1810-1814. 1810 S-284 R3 G4. 1811 S-287 R2 G5. 1812 S-288 R2 G5. 1812 S-289 R1 AG3. 1814 S-295 R1 G4. Some are sharper with defects. All except for first have a clear date. Lot of 5 coins.



501. 1812 S-289 R1 VF25. Large Date. Choice glossy chocolate brown. Virtually perfect for the grade. The identifying marks are a very tiny pinprick in the field above the head and a light nick over the N in CENT. Otherwise this cent is flawless. MDS, Breen state II, the reverse rotated 20 degrees CW. Ex Bowers & Merena 6/22/2000:185.



504. 1813 S-293 R2 F15. Slightly sharper with extremely fine granularity covering the planchet. No verdigris, and the roughness is so fine it gives the surfaces an attractive satiny look. The only marks are a dull dent on the N in CENT and a tiny rim bruise under the stem tip. Glossy olive and steel brown with some lighter brown in protected areas of the reverse. LDS.



502. 1812 S-289 R1 G6. Large Date. Misaligned dies. Sharper but covered with fine to moderate granularity. No verdigris or notable marks. Medium olive and darker steel brown. The obverse is misaligned at least 10% to K-8.5 while the reverse is properly centered. The reverse is rotated 25 degrees CW from the normal head-to-foot orientation. Ex Ferris Stamp & Coin

505. 1814 S-294 R1 VG10. Crosstet 4. Glossy steel brown and chocolate. A few light nicks plus a rim nick under the first 1 and a tiny rim bruise at star 11. No roughness. MDS.

506. 1814 S-295 R1 VG10. Plain 4. Glossy chocolate brown with medium brown highpoints. A half dozen tiny pitmarks and specks of verdigris, but overall the planchet is decent. A few small rim nicks, the strongest one at star 9. MDS.

507. 1816 N-2 R1 AU50. Sharpness mint state but lightly cleaned, now retoned glossy reddish brown and chocolate, then coated with a thin layer of lacquer. A few tiny nicks in the field right of star 3, but no spots. LDS, the reverse rotated 45 degrees CW. Ex Stack's 6/70:1236.



503. 1812 S-291 R2+ VF25. Small Date. Slightly sharper with traces of very light verdigris in protected areas of the reverse. The obverse is choice, smooth and virtually flawless. A tiny rim bruise left of the date is the only contact mark on either side. The obverse is choice glossy chocolate brown with frosty flowline luster in protected areas. The reverse is slightly glossy reddish chocolate with steel brown highpoints. LDS, Breen state IV.



508. 1816 N-3 R4+ VF25+. Glossy olive and chocolate with lighter steel brown highpoints on the obverse. A very tiny depression in the field midway between star 1 and the chin. MDS. Noyes photo #27923. Ex Del Bland 5/78-John D. Wright.

EQUAL CC#4 1816 N-4
EX C DOUGLAS SMITH



509. 1816 N-4 R2 MS60+. Lustrous medium brown with bluish steel overtones and traces of faded mint red in protected areas of the reverse. The surfaces are covered with attractive satiny luster. The only notable marks are two tiny nicks on the throat and a speck of reddish crud under star 3. MDS. Listed as MS60+ and tied for CC#4 in the Bland census. Comes with a great and lyrical (per C. Doug) pedigree. Ex Jerry (The Mad Monarch) Bobbe-Ken (Coastal) Pines-Dr. Bob (The Great Shal) Shalowitz-C. Douglas Smith.

510. 1816 N-7 R3 VF35. Slightly sharper with a few too many tiny nicks for a higher grade, plus a speck of dark olive verdigris at the right top of T in UNITED. Rather glossy steel brown with frosty lighter brown in protected areas. MDS.



511. 1816 N-8 R3 VF35. Glossy medium brown and chocolate with some frosty light brown in protected areas. The obverse is delicately mottled while the reverse toning is more uniform. A few small nicks, none notable. MDS with a rim cud break from star 11 to star 12. Ex Stack's 6/68-John D. Wright.



512. 1816 N-8 R3 VF30. Glossy bluish steel brown and chocolate, possibly retoned. A dull, light nick under the curl on the cheek is the only notable mark. LDS with rim cud breaks from star 11-12, stars 8.5-10, and a barely visible one due to the narrow rim at star 3 to star 4.

LATE DIE STATE 1816 N-9



513. 1816 N-9 R3 EF45. Slightly sharper but the highest points of the cheek, forelock, and hair around the ear have been rubbed so those areas are a lighter coppery tan color. Otherwise the surfaces are lustrous light bluish steel brown with splashes of darker olive and traces of frosty tan faded down from mint color in some protected areas. A small spot of microscopic roughness at the curl left of the ear and another in the middle of the neck, plus a faint lamination that meanders through the 6 to star 13, as struck. LDS.



514. 1817 N-2 R3 VF25. Glossy chocolate mottled with reddish brown and olive tones. A couple short, light scratches at the curl over the 7, another under the bust tip, and a couple small rim nicks on the reverse. Rare EDS without the crack down through the first S in STATES to the leaf below. Ex Bob Essig 8/93-John D. Wright.



517. 1817 N-9 R2 EF45. Five points sharper with a few light nicks on the cheek and a depression at the dentils over star 7 caused by an incomplete planchet, as struck. The opposing dentils at the bottom of the reverse are also slightly weak. Frosty tan and light brown with a splash of dark steel at the date and a few other places on each side. EDS. Ex Jack Robinson, Superior 1/29/89;682-John D. Wright.



518. 1817 N-10 R1 AU50. Attractive glossy chocolate brown with frosty golden tan and light brown in protected areas. The surfaces are smooth and nearly flawless. A tiny nick between stars 8 & 9 and a tiny depression just left of the 7 are the best identifying marks. Nicely struck EDS, the fields slightly reflective. Ex Superior10/2000:1249.



515. 1817 N-6 R1 EF45. Glossy medium brown with frosty golden light brown covering the protected areas. The only defect is a small spot of reddish brown toning at the ribbon loop under E in CENT. Nicely struck E-MDS. An attractive cent. Ex Steve Vesely 11/86-John D. Wright.

519. Trio of 1817 cents. N-10 R1 VF20. N-16 R1 15-Star Obverse F12. N-17 R4 G6 MDS. All are slightly sharper with defects. Lot of 3 coins.



516. 1817 N-7 R3+ VF35. Mouse Top. Slightly glossy chocolate delicately mottled with lighter brown and darker olive tones. Flowline frost covers the protected areas. There is microscopic roughness near stars 1-10 and in the reverse fields, plus a fine hairline scratch from star 9 to star 10. MDS with a large "mouse" break on top of the head under star 8. Ex Joe Tomasko 3/87-John D. Wright.



520. 1817 N-12 R3 VF30. Slightly sharper with some microscopic roughness at ME. Otherwise a glossy olive and steel brown with lighter steel brown highpoints. MDS. A variety that's difficult to find in high grade. Ex Ferris Stamp & Coin 12/85-John D. Wright.

521. 1817 N-14 R1 MS60. Glossy medium brown with a dusting of darker olive on the left side of the obverse and bluish steel overtones on the reverse. Traces of faded mint red show in protected areas, especially on the reverse. M-LDS, the usual Randall Hoard die state. Ex Steve Fischer 6/84-John D. Wright.



522. 1817 N-14 R1 MS63. Mint red fading to light steel brown, about half the faded red remaining. No spots or stains, a tiny nick and light scuff on the chin are the only marks. M-LDS, a typical Randall Hoard die state, but this is a really nice one.

523. 1817 N-14 R1 ANACS graded MS62 Red & Brown. EAC grade MS60. Glossy medium brown with frosty faded red in protected areas, traces on the obverse and at least 20% on the reverse. A sprinkle of dark olive spots covers much of the wreath ribbon. LDS, most likely from the Randall Hoard, with the usual soft strike on the buns and much of the wreath.

524. 1817 N-15 R4- VF25. Ten points sharper with traces of fine porosity on the obverse, strongest at stars 3-5 and under the lowest curl. A thin scratch or struck-through line slants down from the bottom of star 3 to the right side of star 2. Rather glossy chocolate and darker steel brown with traces of frosty tan in protected areas. E-MDS. Ex Fred Borchardt-Dennis Mendelson 6/86-John D. Wright.



525. 1817 N-16 R1 EF45. 15-Star Obverse. Attractive frosty light brown with steel brown highpoints. A tiny pinprick close before the nose tip is the only notable mark. Sharply struck E-MDS, before the reverse rim cud break. A choice example.

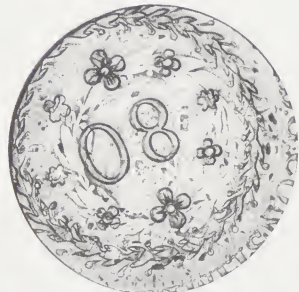


526. 1817 N-16 R1 VF30. 15-Star Obverse. Slightly sharper with a thin scratch along the underside of the chin to the throat. Otherwise very nice, nearly choice. Glossy steel and chocolate brown. MDS with a cud break in the dentils at AM. Ex Jonathan Kern 6/87-John D. Wright.



527. 1817 N-17 R4 VF25+. Close to VF30. Glossy medium brown with a splash of darker olive brown and reddish chocolate in the center of the reverse. No notable signs of contact. MDS, the right top of the first T in STATES raised due to the strong die cracks. Ex Jerry Stallons 6/75-John D. Wright.

BRAZIL 80 REIS OVER STRUCK ON A LARGE CENT



528. Brazil 80 reis counterstrapped on an 1816-1823 large cent EF45. Much of the large cent undertype shows, clearest on the "80" side where ONE CENT and most of the wreath is rather clear. Glossy chocolate and light olive brown. Sharp and very attractive.

529. 1818 N-1 R2 VF20. Sharpness VF35 with a half dozen small pits at star 1 and microscopic roughness in the obverse fields. A small rim bruise under the second 1 in the date and a few small rim nicks at ATE. Mostly glossy steel brown and chocolate with some reddish chocolate in protected areas of the obverse. Nicely struck E-MDS.



530. 1818 N-2 R4+ F15. Ten points sharper with extremely fine roughness under a rather glossy dark olive and steel patina. No marks or verdigris. MDS with the area above N in UNITED raised into a retained cud. Ex Darwin Palmer 8/74-John D. Wright.

1818 N-3 OBTUSE BROCKAGE



531. 1818 N-3 R3 VF25. Obverse Brockage. Nice glossy chocolate brown. A small rim bruise at the top of the brockage (in-use) side is the only notable mark on otherwise very attractive surfaces. Struck slightly off center to K-9, but not enough to lose any of the details. LDS. Another very attractive mint error in this sale. Ex Denis Loring 8/87-John D. Wright.



532. 1818 N-3 R3 EF40. Glossy medium brown and chocolate with frosty luster covering the protected areas. A small nick over star 13 and a faint hairline up from the top of star 1. LDS, the reverse rotated 40 degrees CCW. Ex J. Dillow 2/81-John D. Wright.

533. Group of four cents, 1818 & 1819. 1818 N-3 R3 F12. 1818 N-5 R3 VG10. 1818 N-9 R3 VF20. 1819 N-6 R1 F12. All are slightly sharper with defects. Lot of 4 coins.



534. 1818 N-4 R4+ F12. Slightly sharper with extremely fine roughness covering the fields. There is some light corrosion at UN and a pitmark over the M, plus a light nick on the bottom edge of the bust over the first 8. Otherwise free of notable marks. Slightly glossy dark olive brown and steel with some hints of reddish steel on the reverse. Not perfect but not at all bad for this tough variety, which usually comes with serious defects. Nicely struck EDS, before the obverse die fails. The O in ONE and C in CENT are a bit weak but still visible. Ex Worldwide Coins (Atlanta) 6/70-John D. Wright.



535. 1818 N-5 R3 EF40. Glossy dark chocolate and steel brown with some shall splashes of medium brown. Nearly free of marks, a shallow low spot under the NT in CENT, as struck. LDS, the obverse fields very smooth and slightly reflective, a result of a fresh die lapping. An attractive cent, tied for CC#8 in the Bland census. Noyes photo #27815. Ex Barney Bluestone 2/345:1874-Willard C. Blaisdell 9/76-R. E. Naftzger, Jr.

536. 1818 N-5 R3 VF25. Sharper by at least 10 points but the rims have been carefully smoothed to eliminate some small rim nicks. Glossy light to medium brown with a small splash of reddish brown in the field before the mouth. M-LDS. Ex Bowers & Merena 1/26/89:101.



537. 1818 N-5 R3 VF30. Slightly sharper with a rim bruise at star 4 and a smaller one under the second 8. Glossy dark steel and chocolate brown with some frosty lighter brown and flowline luster in protected areas. LDS.

538. 1818 N-6 R1 EF40. Five points sharper with a few light nicks at the throat and a few more at NE in ONE down to the EN in CENT. Glossy medium brown and chocolate with darker steel brown highpoints on the obverse and frosty luster in protected areas. EDS.



539. 1818 N-6 R1 EF45. Five points sharper but lightly cleaned, now retoned glossy steel brown with frosty golden tan in protected areas. A small spot of reddish brown toning close over star 13. MDS. Ex J. R. Frankenfield, Superior 2/17/01:691.

540. Group of 18 middle date cents, 1818-1833. Grades range from Fair-2 to VF20, average G6. Dates are 1818 (1) 1824 (2) 1825 (1) 1826/5 (1) 1828 (2) 1829 (2) 1830 (2) 1831 (2) 1832 (3) 1833 (2). Lot of 18 coins.

1818 N-7



1818 N-8



541. 1818 N-7 R1 MS60. Frosty light bluish steel brown with satiny, lustrous surfaces. Possibly retoned but the eye appeal is excellent. A thin nick on the bust and a couple more in the field off the nose tip. Nicely struck LDS with the small cud break that connects the top of the O in OF to the rim above.

542. 1818 N-8 R3 AU50. Sharpness close to mint state with some extremely fine roughness at stars 12-13 and around RIC. A dull struck-through depression extends from the hairbun to the top of star 11 and another meanders from the earlobe down to the bust tip, both as struck. Frosty medium brown mottled with some darker steel brown. Traces of faded mint red show in a few protected areas. LDS, several tiny rim cud breaks on the obverse. Ex J. Stallons 6/90-John D. Wright.



543. 1818 N-9 R3 EF40. Double Profile. Glossy dark olive brown with lighter steel brown highpoints. A small patch of microscopic roughness under the wreath but no marks. MDS with a double profile on the forehead and back of the ear, plus a triple profile on the nose tip. None of this chatter is strong. Ex John Borcky-Thomas L. Elder 6/35:890-Thomas L. Elder 1937-Willard C. Blaisdell 9/76-R. E. Naftzger, Jr.-1986 EAC Sale, lot 195-J. R. Grellman 3/87-J. R. Frankenfield, Superior 2/17/01:702-2002 EAC Sale, lot 409.



544. 1818 N-9 R3 VF35. Glossy medium brown and chocolate with some reddish brown at stars 7-10 and around the ear. A dull rim nick at star 7 and a smaller one at A in STATES. LDS with a thin rim cud break from star 7 to star 8. Ex Tom's Coins, Winter Park, Florida, 10/71-John D. Wright.

545. 1818 N-10 R1 AU55. Frosty reddish steel brown, possibly retoned. A small spot of darker toning on the right bases of the E in STATES and the E in CENT. MDS, the usual Randall Hoard die state.

546. 1818 N-10 R1 AU55. Very near mint state with some microscopic roughness at TED and F-AM and a speck of greenish verdigris at the curl on the neck. Frosty light to medium brown with reddish brown on much of the reverse. M-LDS, the usual Randall Hoard die state. Ex Dennis Mendelson /23 91:790



547. 1819/8 N-1 R1+ EF40. Overdate 9 over 8. Sharper by at least 10 points but dark with microscopic roughness. No verdigris, the only marks a few faint hairline scratches inside the wreath. Dark olive and steel brown. Sharply struck E-MDS.



548. 1819 N-2 R1 PCGS graded AU58. EAC grade AU50+. Large Date. Glossy chocolate brown with frosty lighter brown covering the protected areas and traces of faded mint red on both sides. No defects, just a bit of very light wear on the highest points. MDS.



549. 1819 N-2 R1 EF45. Large Date. Ten points sharper with a small rim dent between stars 3 & 4 and lighter ones above star 5 and under the 81. Otherwise the surfaces are choice. Glossy light to medium brown with frosty luster covering the protected areas and traces of faded mint red on both sides. MDS.

550. 1819 N-2 R1 EF40. Large Date. Slightly sharper but recolored glossy medium brown and chocolate mottled with some darker olive brown on the obverse. No contact marks. M-LDS. Ex R. S. Brown, Jr.



551. 1819 N-3 R3 VF30. Glossy medium brown with darker steel brown highpoints and frosty flowline luster in protected areas of the reverse and a small spot of darer olive over the 9. LDS with a fine crack from the bust tip down toward star 1. Ex Jim McGuigan 3/73-John D. Wright.



552. 1819 N-4 R3 VF35. Glossy chocolate and steel brown with frosty lighter brown in protected areas of the obverse. A light rim bruise over star 11, a small rim nick over the left side of E in AMERICA, and some minor roughness at that C. Frosty flowline luster covers the protected areas. MDS.



553. 1819 N-5 R3 VF30. Ten points sharper but lightly cleaned, now retoned glossy bluish steel and chocolate brown with some frosty lighter brown in protected areas. A thin struck-through line meanders down from the O in ONE to the left end of the line under CENT, as struck. Sharply struck and rather attractive in spite of the retoning. Ex William Weimer-1976 EAC Sale, lot 2239-Bill Noyes-1980 EAC Sale, lot 170-J. D. Wright.

554. 1819 N-6 R1 VF35. Glossy light brown mottled with tan a faint hairline under stars 7-8 otherwise choice E-MDS.

555. 1819 N-6 R1 VF35. Ten points sharper but recolored glossy light olive and reddish brown. A small patch of microscopic roughness in the field under star 6 and a smaller one under star 4 are the notable marks. M-LDS, the reverse rotated 30 degrees CCW.

556. Group of five cents, 1819-1843. 1819 N-6 R1 F12. 1822 N-2 R3 G6. 1823/2 N-1 AG3. 1829 N-6 R1 VG8. 1843 N-15 R3 VG10. All are slightly sharper with defects. Lot of 5 coins.



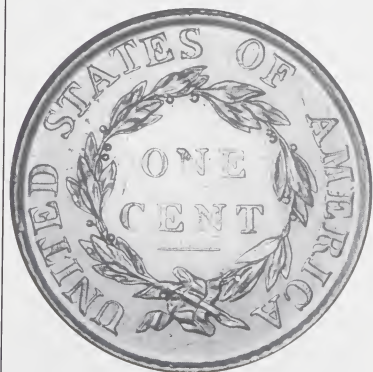
557. 1819 N-7 R4 VF25. Glossy steel brown with frosty lighter brown in protected areas and darker steel brown covering the upper right portion of the obverse. A light rim bruise at star 2 is the only notable marks. MDS. A nice example of this tough variety. Noyes photo #27723. Ex Jim Fairfield 12/78-John D. Wright.

558. 1819 N-8 R1 EF45. Slightly sharper with a faint scuff on the highpoints at ERTY and the hairbuns, and this scuff breaks the glossy chocolate brown toning. A couple dull rim nicks at AME are the only other marks. M-LDS.

559. 1819 N-9 R1 PCGS graded MS62 Brown. EAC grade MS60. Frosty light bluish steel brown with a patch of dark olive at star 3, and this patch contains traces of very light verdigris, possibly removable. There is faded underlying mint red in protected areas on both sides. M-LDS, possibly part of the Randall Hoard of mint state cents.



560. 1819 N-10 R4 VF35+. Close to EF40. Attractive glossy chocolate brown with frosty flowline luster in protected areas. Virtually flawless. A small spot of lighter brown toning just left of star 12 is the best identifying mark. E-MDS. Ex Jim Fairfield 8/81-John D. Wright.



561. 1819 N-10 R4 AU50. Glossy light bluish steel brown with some very faded underlying red on the reverse. A half dozen tiny spots of dark olive toning at and above the E in ONE, plus a few tiny nicks on the cheek. MDS. Listed as AU55 in the Bland census. Ex American Heritage Minting 1/81-Del Bland 4/81-Ed Jasper.

562. 1820/19 N-1 R1 VF25. Large Overdate 20 over 19. Ten points sharper with a few rim dents, strongest at CA, and a few light nicks scattered about both sides. Rather glossy chocolate brown speckled with some darker olive on the reverse. E-MDS, the overdate sharp.



563. 1820/19 N-3 R2 EF45. Small Overdate 20 over 19. Glossy golden light olive with frosty flowline luster covering the fields and hints of very faded red in protected areas of the reverse, possibly from an old retoning. No marks and excellent eye appeal. MDS, the overdate still visible.



564. 1820 N-4 R4 VF30. Glossy steel brown and chocolate with frosty lighter brown in protected areas. A dull rim nick under star 13 is the notable mark. Sharply struck MDS, the reverse rotated 35 degrees CCW. Excellent eye appeal for the grade. Ex Bruno Crossfield 12/56-Willard C. Blaisdell 9/786-Del Bland 2/80-Ed Jasper.



568. 1820 N-8 R3- EF40. Sharpness close to mint state with myriad fine, dull scratches on the portrait plus a couple others over the 0 in the date and from star 5 to the coronet. Otherwise this cent is choice and has outstanding eye appeal. Lustrous steel brown with faded mint red in protected areas. E-MDS. Ex Tom Reynolds 4/86-John D. Wright.



565. 1820 N-5 R3 VF35+. Choice glossy medium brown with frosty luster covering the protected areas. A tiny nick on the jawline and another just right of the nostril. A choice example, very close to EF40. MDS. Noyes photo #27814.



569. 1820 N-8 R3- VF30+. Glossy chocolate brown. A couple faint contact marks in the field over star 1 and a few very tiny planchet flakes in the field off the nose tip. MDS.



566. 1820 N-5 R3 VF30. Slightly sharper with a scuff of fine hairline scratches on the cheek and forehead. Nice glossy medium brown and chocolate, traces of frost in protected areas. M-LDS. Ex Don Peterson-Del Bland-Howard Whitaker 5/82-John D. Wright.



570. 1820 N-9 R3 VF30. Large Date. Ten points sharper but recolored glossy dark steel brown with lighter reddish brown in protected areas. A fine hairline scratch just left of star 8 and another under the E in ONE. Sharply struck EDS, the fields smooth and slightly reflective.



567. 1820 N-7 R2 VF30. Slightly sharper with very fine pitting on the left side of the reverse. No verdigris, a couple fine parallel hairlines over star 2 the notable marks. Glossy steel brown and chocolate. LDS. Ex Ramont 3/77-Bill Noyes-1983 EAC Sale, lot 351.



571. 1820 N-9 R3 VF20. Large Date. Slightly glossy dark steel brown, the highpoints a few shades lighter. Flowline luster shows in the protected areas. A faint hairline across the bust tip is the only mark. MDS.



572. 1820 N-9 R3 ANACS graded EF40. EAC grade VF30. Frosty dark steel brown and chocolate. A tiny nick in the hair under B is the only mark. Nice for the grade. LDS.



573. 1820 N-10 R2 VF35. Large Date. Slightly sharper but lightly cleaned, now nicely retoned glossy bluish steel brown and chocolate. Some extremely fine roughness at RICA and a small nick right of E in ONE. MDS. Ex Paul Padgett 6/84-John D. Wright.



574. 1820 N-11 R2 EF45. Large Date. Glossy steel brown and chocolate with frosty lighter brown in some protected areas. A speck of carbon in the dentils under star 13 and a tiny rim nick at C in AMERICA. MDS.



575. 1820 N-12 R3 EF45+. Large Date. Frosty light brown and steel with a splash of darker olive toning in the field at the forehead. A thin nick touches the left point of star 12 and another under the stem tip. E-MDS. Ex Tony Terranova 4/88-John D. Wright.

BORDERLINE MINT STATE 1820 N-12



576. 1820 N-12 R3 AU55. Large Date. Very close to mint state with some very faint hairline scratches over TA in STATES and a nick on E in CENT. Lustrous light steel brown. LDS.

577. 1820 N-13 R1 NGC graded MS64 Red & Brown. EAC grade MS62. Large Date. Lustrous bluish steel brown with 15% of the red remaining, mostly on the reverse. A half dozen small spot of dark olive toning at stars 1-3 and a tiny planchet fissure in the dentils at star 10 and the opposing area at RI, as struck. M-LDS, the usual Randall Hoard die state. Sharply struck and very attractive.



578. 1820 N-13 R1 MS60. Large Date. Lustrous bluish steel brown and golden tan., possibly retoned but the luster and eye appeal are excellent. No spots or stains, the only mark being a very tiny nick on the jawline. MDS, most likely from the Randall Hoard.

579. 1820 N-13 R1 AU55. Large Date. A mint state cent that was dipped and is now retoned faded red with small splashes of steel brown, largest at stars 7 & 8. No contact marks. Sharply struck MDS, probably from the Randall Hoard. Ex J. J. Van Grover 8/87.



580. 1820 N-15 R2 EF45+. Choice lustrous bluish steel brown with satiny surfaces. A faint hairline scratch from star 5 to star 6 is the best identifying mark, and it is barely visible. Great eye appeal, very close to AU50. M-LDS. Ex Joe Kane 3/13/82-Larry Knee 6/86-John D. Wright.



581. 1821 N-1 R1 VF20. Sharpness VF35 but cleaned and just starting to retoned to steel brown. A faint hairline from the neck down to the dentils left of the 2 and two tiny digs at the left foot of N in ONE. This one deserves a proper retoning. EDS.

582. Group of four cents, 1822-1826. 1822 N-3 R2 F15. 1824 N-4 R2 VG8. 1826 N-5 R2+ VF20. 1826 N-7 R1 VF20. All are sharper with defects. Lot of 4 coins.



584. 1822 N-6 R3 AU55. Glossy light brown and bluish steel with underlying faded mint red in protected areas. The surfaces are smooth and very attractive. The only marks are some faint, tiny voids on the cheek, as struck, and a speck of reddish brown toning over the inner hairbun. Very early die state with slightly reflective fields. A very attractive cent and a great die state. Ex Norm Pullen 7/84-John D. Wright.



583. 1822 N-4 R2 MS60. Lustrous light brown and bluish steel with peeps of faded mint red on both sides. A couple short, very faint hairline scratches off the chin, a tiny planchet flake under star 8, and a small swipe of reddish olive toning just right of star 5. Sharply struck EDS.



585. 1822 N-7 R3+ VF25. Slightly sharper with extremely fine roughness covering the fields. No spots or verdigris, the only notable marks a faint hairline from the mouth to star 3 and a light rim bruise at F-A. Slightly glossy dark chocolate brown and olive with lighter steel brown highpoints. MDS. This is the Wright plate coin for the variety. Ex Johnnie Dillow 2/80-John D. Wright.



586. 1822 N-8 R4 VF20. Sharpness EF40 but the highpoints are covered with very fine contact marks as if was pressed into very fine sandpaper. In addition there are some faint hairlines on the obverse. No spots or corrosion, but the tiny marks give the highpoints a matte appearance. Steel brown and chocolate. Sharply struck MDS. Ex Sid Emerson-Dan Holmes 5/81-John D. Wright.

587. Group of four large cents, 1822-1851. 1822 N-8 R4 G6. 1848 N-29 R3- VF35. 1851 N-34 R4 VF25. 1851 N-40 R6- VG10. A couple are slightly sharper with minor defects. Lot of 4 coins.



588. 1822 N-9 R5- VG10. Slightly sharper with too many light contact marks for the higher grade, including a fine hairline scratch from the nose tip to star 3 and a fresh nick on the ribbon over the stem. Slightly glossy chocolate and olive brown. MDS.

589. 1822 N-10 R2 VF30. At least 10 points sharper with a couple dark olive and steel splashes on the upper reverse, and these stained areas contain microscopic roughness. Otherwise the planchet is smooth. The obverse is glossy chocolate and steel brown with lots of frosty golden tan in protected areas. The reverse is a mottled mix of light brown, chocolate, reddish chocolate, and darker olive. EDS. Ex Steve Fischer 6/81



590. 1823/2 N-1 R2 VF20. Overdate 3 over 2. Five points sharper but recolored glossy dark steel and chocolate brown. There is a light rim bruise at D and another under the wreath. LDS with crumbling in the dentils on the left side of the obverse. The overdate is clear. Ex Jim McGuigan 6/83-John D. Wright.



591. 1823 N-2 R2 F15. Sharpness EF40 but covered with fine roughness. No verdigris or marks. Dark steel, the surfaces close to matte. MDS. Excellent detail.



592. 1823 N-2 R2 F15. Five points sharper with some fine hairline scratches across the cheek and a few more at the date. Rather glossy dark olive brown with lighter steel brown highpoints. There is extremely fine roughness in the fields mostly hidden under the glossy patina. Scarce M-LDS with two obverse rim breaks.



593. 1823 N-2 R2 F15. Ten points sharper with a rim dent under the 1, another at star 3, and a third at F in OF. Glossy medium steel brown and chocolate. LDS with a cud break extending into the field between stars 5 & 6. Ex Lester Merkin 6/74:606-John D. Wright.



594. 1823 Restrike MS60+. Attractive glossy bluish steel brown with some iridescent rose overtones in the smooth, prooflike fields, a product of a fresh die lapping. The only mark is a tiny reddish pitmark or planchet flake on the T in LIBERTY. The prooflike fields give this piece outstanding eye appeal. LDS.



595. 1824/2 N-1 R1 F15. Overdate 4 over 2. Recolored a rather glossy dark steel with bluish steel overtones. No spots or marks. MDS, the overdate clear.



597. 1824 N-2 R2 VF30. Sharpness EF45 with fine porosity covering the fields. No verdigris or contact marks. Rather glossy dark steel. E-MDS.

598. 1824 N-4 R2 PCGS graded VF30. EAC grade F15. Slightly glossy olive and chocolate brown, the obverse mottled. A small nick on the nose, a few minor contact marks. E-MDS.



599. 1824/2 N-5 R4+ VG7. Overdate 4 over 2. Slightly sharper but recolored glossy dark bluish steel brown with very faded red in protected areas. A small dig at ON in ONE. MDS.

600. 1824 cent counterstamped for the 1989 EAC Convention in Cincinnati. This was the cent presented to Dr. William E. Hopkins, most likely by that hammer-wielding Mike Packard.



596. 1824 N-2 R2 EF45+. Close to AU50 with a couple dull rim nicks at stars 6 & 7. Otherwise free of marks or other defects. Lustrous bluish steel and chocolate brown. M-LDS with lots of flowline luster covering both sides.



601. 1825 N-1 R4 VF30+. Close to VF35. Glossy medium brown mottled with darker steel brown. A tiny nick on the chin and a small planchet flake in the field off the nose. MDS.

WRIGHT PLATE COIN 1825 N-2



602. 1825 N-2 R2 EF45. Slightly sharper with a scuff of light hairline scratches under the wreath. Otherwise choice. Glossy bluish steel brown and chocolate with traces of golden tan faded down from mint color in protected areas. A small splash of darker olive brown at the dentils near star 12. E-MDS. The fields smooth and slightly reflective. This is the Wright plate coin for the variety. Ex G. Harris-H. Whitaker 5/82-John D. Wright.



604. 1825 N-6 R3 EF45. Glossy chocolate brown with frosty luster covering the protected areas. A couple tiny hairline scratches on the neck and another close under the T in CENT. MDS with sharp strike doubling on the lower half of the reverse (from die bounce). Ex Downie Lepczyk Auctions 4/87:2040-John D. Wright.

DOUBLE STRUCK 1825 N-8



603. 1825 N-3 R3 VF35. Slightly sharper with too many tiny contact marks for the sharpness grade. A dull nick under the M is the most notable of these defects. Frosty steel brown and chocolate, the obverse delicately mottled with some darker steel. M-LDS. Ex Joe Tomasko 11/91-John D. Wright.

605. 1825 N-8 R3 VF25. Double Struck. Ten points sharper with microscopic roughness under a glossy dark bluish steel patina. A relatively strong rim nick at E in STATES is the only notable mark. Double struck with an offset between strikes of about a half millimeter, the doubling clear on both sides. MDS.

1825 N-9 EX HOWARD NEWCOMB



606. 1825 N-9 R2 AU50. Choice lustrous chocolate and steel brown with frosty lighter steel brown covering the protected areas and a few hints of very faded mint color on the obverse. A tiny nick close off the bust tip and a small splash of darker olive brown toning at AT in STATES. Sharp MDS. The right side of the reverse shows obvious strike doubling. Ex Howard R. Newcomb, J. C. Morgenthau 6/45:570-Floyd T. Starr, 12/4/84:1635-Stack's 3/17/87:182-Dennis Mendelson, 2/3/91:333.



607. 1825 N-10 R3+ VF25. Sharpness EF40 but the reverse is covered with uniform fine granularity. Cleaned and partially retoned, the obverse glossy steel brown with very faded red covering the protected areas. The reverse is a uniform glossy medium olive brown. A short hairline scratch under the ear is the only mark. EDS.



608. 1825 N-10 R3+ VF35. Attractive glossy chocolate brown. There are a couple very faint hairline scratches on the neck and a barely visible rim bruise at star 1. E-MDS, a fine die crack from the bust tip to the rim left of the 1. Noyes photo #27816. Ex Willard C. Blaisdell 9/76-Del Bland-Bob Vail-Del Bland 11/77-Ed Jasper.



609. 1826 N-1 R2 EF40. Slightly sharper with a small spot of very light reddish verdigris under the chin and another on the leaf under the E in STATES, plus a faint hairline up from the chin and a nick on the E in CENT. Otherwise a choice example. Glossy light to medium brown frosty lighter bluish steel brown in protected areas of the reverse. MDS with a strong rim cud break at star 6.

610. 1826 N-3 R3 VF20. Ten points sharper with microscopic roughness covering the obverse. No verdigris or notable marks. Slightly glossy medium brown with splashes of darker olive on the obverse. M-LDS.



611. 1826 N-3 R3 F12. Double Struck. Attractive glossy medium brown and chocolate. A dull, light rim nick at star 1 is the only notable mark. Boldly double struck, the second strike rotated 165 degrees CW from the first. Much of the undertype shows clearly on both sides, with the undertype date easily visible at stars 7-8. The clarity of the undertype and dramatic rotation between strikes make this a terrific mint error. Ex Denis Loring 3/72-John D. Wright.



612. 1826 N-5 R2+ EF40. Slightly sharper but lightly cleaned, now retoned a glossy chocolate and steel brown with lots of frosty light steel brown and tan in protected areas. A small spot of darker toning close off the bust tip and three smaller ones at stars 3, 5, and 7 are the only marks. LDS with a series of rim cud breaks from star 3 to star 8. Ex Steve Fischer 6/82-John D. Wright.

614. 1826 N-6 R2 VF30. Sharper by at least 5 points but lightly cleaned, now recolored glossy light greenish olive brown and chocolate. A small spot of reddish verdigris under the 2 and a shallow planchet chip in the dentils at star 5 are the notable marks. E-MDS.

615. 1826 N-6 R2 VF30. Glossy medium brown and chocolate with wisps of darker olive on the obverse and frosty flowline luster in protected areas of the reverse. A few tiny nicks at E in ONE. Overall nice for the grade. M-LDS, a long rim cud break from star 6 to star 8. Ex John Ashby 8/81-John D. Wright.

616. 1826 N-7 R1 VF30. Glossy medium brown with frosty lighter brown covering the protected areas. Very attractive, just a few trivial nicks from choice. LDS. Ex Don Valenziano 11/89-John D. Wright.



613. 1826 N-5 R2+ VG8. Off Center. Glossy light brown and olive with some darker chocolate in protected areas, probably lightly cleaned and retoned. A small circular depression on the unstruck portion of the planchet over ES in STATES is the best identifying mark. Struck 20% off center to K-2.



617. 1826/5 N-8 R2 EF40. Overdate 6 over 5. Glossy dark chocolate brown and bluish steel with traces of frosty light brown in protected areas of the reverse. The surfaces are choice, smooth and free of marks or other defects. A very tiny planchet flake on the rim over E in UNITED can help identify this cent. MDS, the overdate still visible. Ex Tilden Coin Co. 8/81-John D. Wright.

618. 1826 N-9 R3 VF25. Sharpness EF40 but covered with fine granularity. No verdigris or contact marks. Slightly glossy dark olive and steel with lighter steel brown highpoints. E-MDS.

CC#4 1826 N-9 EX TED NAFTZGER



619. 1826 N-9 R3 MS60. Double Profile. Lustrous light brown and golden tan with peeps of very faded mint red on the obverse. Choice except for a splash of dark olive at star 12 reaching up to star 11 and smaller splashes of similar toning at NT in CENT and on the leaf under TA in STATES. Sharply struck MDS with a fine double profile on the lips, bust, LIBERTY, date, stars 1-2, and stars 10-13. Listed as MS65- in the Noyes census and MS63 in the Bland census, tied for CC#4. Ex Anderson Dupont, Stack's 9/24/54:649-R. E. Naftzger, Jr., 1990 EAC Sale, lot 134 (as MS63)-Frank McElwain.



620. 1826 N-9 R3 AU50. Glossy light to medium brown with a splash of chocolate and olive brown on the lower portion of the obverse. Underlying frosty mint luster covers the fields on both sides. A thin diagonal nick at the left bottom of O in ONE is the only notable mark. MDS. Sharp and attractive.



621. 1826 N-9 R3 VF35. Glossy chocolate and dark steel brown. A few very tiny pinpricks in the field close before the nose and mouth and a faint hairline under TA in STATES. LDS with a tiny rim cud break extending into the field right of star 7.



622. 1827 N-1 R2 VF25. Sharpness near EF40 with some light pin scratches on the neck and in the field close to the profile, plus similar faint scratches over ONE. Otherwise a nice glossy chocolate brown with smooth, attractive surfaces and frosty luster in protected areas. EDS. Ex Johnnie Dillow 2/81-John D. Wright.



623. 1827 N-3 R2 VF35. Glossy light brown with darker olive in the most-protected areas. A faint hairline under star 8 and a very light nick over C in CENT are the only notable defects. LDS. Ex John Hamrick 3/70-John D. Wright.



624. 1827 N-4 R2 VF35. Choice glossy light to medium brown. A light nick under star 7 and a few microscopic ticks over N in ONE. LDS. Ex Chris McCawley 7/83-John D. Wright.

626. 1827 N-11 R1 VF35. Frosty golden tan and light brown with darker steel brown highpoints. A couple tiny nicks on the neck and a hairline scratch at D-S. EDS. Ex Bowers & Merena 10/90:6178-McCawley & Grellman Auctions 1/11/97:345-John D. Wright.



627. 1827 N-11 R1 VF35. Ten points sharper but recolored glossy light golden tan and sea green with some frosty luster remaining in protected areas. A short vertical hairline under the chin. EDS.



625. 1827 N-7 R3 AU55. Choice lustrous steel brown and chocolate with frosty tan faded down from mint color in protected areas of the reverse. A light nick just right of the F in O is the best identifying mark. MDS. Excellent eye appeal. Ex Jim Frans 10/87-John D. Wright.



628. 1827 N-12 R5 F12. Slightly sharper with extremely fine granularity covering the fields and a planchet void at the rim over AT in STATES, as struck. No verdigris. A fine hairline scratch slants down across the bust. Slightly glossy chocolate and steel brown. EDS, before the die crack down between the 1 & 8. At the lower end of the condition census for this rare variety. Ex Rod Burreas.

629. Group of five cents, 1828-1831. 1828 N-3 R2 F12+. 1828 N-5 R2 F12. 1829 N-5 Small Reverse Letters R3+ VG8. 1831 N-2 R2+ LDS with obverse rim cuds F15. 1831 N-12 R1 F15. Some are sharper with defects. Lot of 5 coins.



630. 1828 N-4 R4 F12. Sharpness VF25 with fine hairline scratches around ONE and several rim bruises, the strongest ones over star 8 and under the stem tip. Glossy light to medium brown. MDS. Ex John Ashby 2/81-John D. Wright.



631. 1828 N-4 R4 VG8. Sharpness F12 with very fine granularity covering the fields and a dull scratch under ONE. No verdigris. Slightly glossy chocolate brown. MDS.



632. 1828 N-6 R1 VF35. Glossy light to medium brown with steel brown highpoints and a small splash of darker reddish chocolate toning over the C in CENT. EDS with the reverse rotated 30 degrees CCW. Ex Frank Wilkinson 6/88-John D. Wright.



633. 1828 N-6 R1 MS62. Double Profile. Lustrous light bluish steel brown with hints of underlying very faded mint red in protected areas of the reverse. A faint horizontal hairline under the right side of star 4 is the best identifying mark, but it's difficult to find any defects on this attractive cent. The reverse is choice. LDS, the obverse peppered with tiny lumps due to extensive die rust. There is a double profile on the brow, nose tip, upper lip, and chin.

634. 1828 N-7 R3 VF35. Slightly sharper with a few too many light nicks for a higher grade, including a nick just right of the nostril. Glossy medium brown and chocolate with frosty lighter brown in protected areas of the obverse. MDS.



635. 1828 N-7 R3 EF40. Glossy medium brown mottled with darker olive and steel on the obverse. No notable marks. LDS with die rust lumps on both sides, strongest on the obverse. Ex Joe Lepczyk Auction 10/81:477-John D. Wright.

636. 1828 N-8 R3+ VF25. Five points sharper but recolored glossy dark chocolate and bluish steel with some lighter chocolate tones in protected areas. A faint hairline from under star 13 to below the adjacent 8, otherwise free of notable marks. EDS, the fields smooth and slightly reflective. The reverse is rotated 50 degrees CCW. Ex John Ashby 5/80-John D. Wright.



637. 1828 N-11 R2 VF35+. Close to EF40 but kept from that level by a couple nicks over star 1 and another in the field off the chin. Otherwise very nice. Glossy medium brown with frosty tan in protected areas of the obverse and light olive covering much of the reverse. E-MDS. Ex New Netherlands Mail Bid Sale 6/67.



638. 1828 N-12 R3 F12+. Slightly sharper with traces of extremely fine roughness in the fields, mostly on the reverse. Slightly glossy chocolate brown with lighter brown highpoints and a small splash of reddish brown over the N in ONE. MDS.

639. Group of five cents, 1829-1838. 1829 N-2 R2 VF20. 1830 N-1 R1 VF20. 1834 N-1 R1 VF20. 1838 N-4 R1 VF25. 1838 N-6 R1 VF30. All are sharper with defects. Lot of 5 coins.

1829 EX CROSSFIELD-BLAISDELL-NAFTZGER



640. 1829 N-3 R3 VF30. Small Letters Reverse. Dark chocolate and olive brown with lighter steel brown highpoints, the reverse a few shades lighter than the obverse, possibly recolored. There is some extremely fine granularity near the rim on the right side of the obverse and over MER. A sharp nick on the first S in STATES and a few lighter ones under the chin. Covered with a very thin layer of lacquer which adds a high gloss. Nicely struck for this variety, no weakness on either side. Ex Bruno Crossfield 12/56-Willard C. Blaisdell 9/76-R. E. Naftzger, Jr. 9/76-Del Bland 5/78-Ed Jasper.

EQUAL SEVENTH FINEST KNOWN 1829 N-5



641. 1829 N-5 R3+ VF35. Small Letters Reverse. Glossy medium brown and chocolate with frosty tan in protected areas of the obverse and lots of flowline luster remaining, especially on the reverse. A fine hairline scratch from the nose at the eye to under star 5 and another short one slanting down the cheekbone. Otherwise the surfaces are choice, very attractive. EDS without any dentil crumbling on the obverse. Typical strike weakness at the top of the head and curl over the date and opposing leaves of the wreath. Called EF40 and tied for CC#7 in the Bland census, VF35 and tied for CC#7 in the Noyes list. Ex Jerry Bobbe 10/73-Myles Z. Gerson 12/79-R. S. Brown, Jr., Superior 9/30/86:663-J. R. Frankenfield, Superior 2/17/01:915.

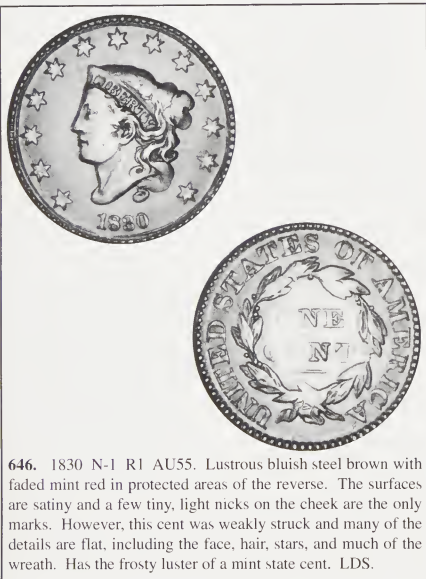


642. 1829 N-5 R3+ ANACS graded VF30. EAC grade VF30. Small Letters Reverse. Glossy bluish steel and chocolate brown. The surfaces are satiny and virtually flawless except for some very faint hairlines in the fields, a faint hairline scratch from the coronet to star 5, and a tiny tick under the O in ONE. Minor weakness at the coronet tip, stars 1-9, and some leaves at the bottom of the wreath. LDS, dentil crumbling on the left side of the obverse.

643. 1829 N-6 R1 VF30. Glossy chocolate brown. Some trivial contact marks, including a dull pinprick at the hair under star 7. MDS.

644. 1829 N-7 R3 VG7. A few points sharper with very fine porosity covering both sides. A dull rim nick under star 4 is the only mark. Slightly glossy dark steel brown with lighter steel highpoints. LDS with 5 spoke die breaks on the reverse.

645. Pair of cents, 1829 & 1846. 1829 N-9 R4 G5+. Small Letters Reverse. LDS. 1846 N-16 R5 F15. Tall Date. Both are glossy brown. Lot of 2 coins.



646. 1830 N-1 R1 AU55. Lustrous bluish steel brown with faded mint red in protected areas of the reverse. The surfaces are satiny and a few tiny, light nicks on the cheek are the only marks. However, this cent was weakly struck and many of the details are flat, including the face, hair, stars, and much of the wreath. Has the frosty luster of a mint state cent. LDS.

647. 1830 N-2 R2+ VF25. Sharpness EF40 with very fine porosity covering the planchet, strongest in the right obverse field. No verdigris or marks. Glossy dark olive brown. MDS.



648. 1830 N-7 R3 VF20+. Glossy chocolate brown, the obverse woodgrained with lighter and darker shades of chocolate. The surfaces are smooth and choice, the only mark being a small, dull rim nick at U. MDS.



649. 1830 N-10 R4+ VF30. Nice glossy chocolate brown with frosty light brown in some protected areas of the reverse. A few small nicks between star 3 and the tip of the nose plus a barely visible rim bruise at the bottom of the reverse. An attractive cent for the grade. EDS, the die crack at ATEs light. Called VF30 in both census lists, CC#4 in one and tied for CC#6 in the other. Ex Bill Bright 2/84-Doug Bird-Dr. Philip Ralls-Dennis Mendelson, Superior 2/3/91:403-J. R. Frankenfield, Superior 2/17/01:947.

1830 N-11 EX FRED TRUEX



650. 1830 N-11 R5 F12. Sharpness VF20 with fine pitting in the fields, strongest on the obverse. No verdigris. The notable marks are a shallow pit at the rim under star 13 and a dull scuff on the rim at TA in STATES. Rather glossy steel brown with darker olive brown in protected areas of the reverse. Ex Fred Truex 1/15/88.



651. 1831 N-1 R1 EF40+. Choice glossy light brown with frosty luster in protected areas. A speck of dark olive on top of N in CENT is the only defect. EDS.



652. 1831 N-2 R2+ EF40+. Glossy medium brown with frosty flow line luster covering the fields. A thin, light nick under star 5 is the only defect. An attractive cent, very close to EF45. MDS with strike doubling on stars 11-13.



653. 1831 N-2 R2+ F12. Reverse Brockage. Sharpness EF40 but moderately corroded. No verdigris, but a pitmark over N in ONE has been smoothed a bit. Chocolate and darker steel brown. The brockage impression is not rotated. The attribution to 1831N2 is based on the die state, which fits this marriage.



654. 1831 N-6 R1 EF40. Triple Profile. Ten points sharper with some tiny nicks in the field off the nose tip, a faint scuff on the cheek, and a more significant dull scrape across the bottom of O in ONE down to the top of N in CENT. Frosty medium brown with lustrous lighter brown and tan faded down from mint color in protected areas. MDS with a triple profile on the forehead and a double profile on the nose.



655. 1831 N-7 R1 AU58. Lustrous light steel brown with frosty tan in protected areas of the obverse and bluish steel overtones on the reverse. The only mark is a faint disjointed hairline scratch from the bottom of E in UNITED to the left end of the line under CENT. MDS. Ex Roy Rauch, McIntire Numismatic Auctions 6/10/88:27.



656. 1831 N-7 R1 EF45. Glossy light to medium brown, the obverse with chocolate and steel brown tones on the highpoints. A small spot of darker olive toning in the field close before the bowlock is the only mark. MDS. Ex Superior 10/2000:1369.



657. 1831 N-7 R1 AU55. Glossy steel brown and chocolate with lustrous lighter steel brown in protected areas. A long very thin nick in the field before the mouth and a tiny rim nick at the second S in STATES. LDS.

SECOND FINEST KNOWN 1831 N-8



658. 1831 N-8 R3 MS63. Lustrous bluish steel brown with 20% of the mint red remaining on the obverse, 40% on the reverse. The surfaces are satiny and very attractive. A trio of faint vertical scuff marks from the chin down to the dentils right of star 1 and a small, dull depression on the tip of the chin, as struck, are the only defects, and they are barely visible. MDS. The die crack through TED-ST clear. Excellent eye appeal. CC#2. Ex Karl Stephens-Doug Bird 5/17/86-Jack Robinson, Superior 1/29/89:941-John Nicholas, Superior 2/2/92:563-Tom Turissini.

659. 1831 N-9 R2 VF30. Ten points sharper but lightly cleaned, now retoned dark chocolate brown with dark steel on the highpoints. A few light nicks in the field before the face and a dusting of very light carbon around ONE. E-MDS. Ex R. S. Brown, Jr. (privately).

RARE DIE STATE 1831 N-9



660. 1831 N-9 R2 VF25. Glossy chocolate and steel brown with dark chocolate in the most-protected areas of the obverse. A few light nicks on both sides, including a thin diagonal nick on the chin. Extremely rare LDS, Noyes state c, with a raised internal retained cud break between the die cracks above and below star 4. Ex Fred H. Borchardt.

661. 1831 N-11 R2 VF25. Sharpness EF40 with minor roughness covering the fields, strongest on the reverse. Some light verdigris in protected areas. Slightly glossy dark olive and steel. LS with the cud break at TES, the top of that S filled.



662. 1832 N-1 R2 F12. Off Center. Sharpness VF20 with a few hairline scratches, mostly on the unstruck portion of the planchet. The notable scratch is from the throat to the dentils under star 1. Nice glossy medium brown, the planchet smooth and attractive in spite of the scratches. MDS. Struck 30% off center to K-2. Ex Ferris Stamp & Coin 4/85-John D. Wright.

663. 1832 N-2 R3- VF25. Sharpness EF45 but lightly corroded, mostly on the reverse. Lightly burnished to reduce the roughness, now toned a rather glossy reddish chocolate and bluish steel brown. EDS, the obverse die crack very light.



664. 1832 N-3 R1 PCGS graded AU58. EAC grade AU55. Frosty medium brown with a splash of dark olive toning between star 2 and the chin. Otherwise free of marks, just a hint of friction from mint state. Nicely struck E-MDS. Ex Ira & Larry Goldberg Auctions 2/16/2001:710.

665. 1833 N-1 R2 EF45. Flat Strike. Glossy medium brown with splashes of reddish brown, strongest at stars 1-3, and frosty luster in protected areas. A thin vertical hairline scratch up from the top of N in ONE is the only contact mark. E-MDS. Very softly struck with serious weakness on the entire portrait, all the stars, and most of the wreath. The planchet is of normal thickness, so the dies must have been set too far apart or the striking pressure was too low. Ex Henry C. Hines-Willard C. Blaisdell-1977 EAC Sale. lot 245-John D. Wright. Comes with a handwritten note from Howard R. Newcomb describing this piece and speculating on the cause of the flat strike.



666. 1833 N-2 R2 AU50. Choice glossy medium brown with lustrous lighter brown covering the protected areas. The only marks are a few tiny ticks on the cheek and two more in the field off the nose tip. Otherwise flawless. Excellent eye appeal. MDS.

667. 1833 N-2 R2 VF30. Sharpness EF45 with some small patches of light verdigris, mostly on the reverse. Slightly glossy mottled mix of chocolate brown and olive with reddish brown toning on the chin. MDS. 1981 EAC Sale, lot 289.



668. 1833 N-3 R1 AU55+. Choice lustrous light brown. Perfect except for a dull rim nick at the first A in AMERICA. Very attractive, the barest hint of rub on the highest points from mint state. MDS.



669. 1834 N-2 R1 EF45+. Double Profile. Choice glossy light brown with bluish steel brown covering most of the reverse. Lustrous golden tan covers the protected areas of the obverse. A tiny spot of darker olive toning left of O in ONE is the only mark. MDS with fine double and triple profiles on the lips, chin, BERTY, stars 1-5, and stars 9-13. Ex Superior 1/29/89:3134.

670. Trio of cents, 1834 & 1836. 1834 N-1 R1 VF30. 1836 N-1 R1+ VF20. 1836 N-2 R2 F15. The first two are sharper with defects. Lot of 3 coins.

671. 1834 N-4 R2 VF30. Double Profile. Sharpness EF45 with myriad faint hairline scratches on both sides and a few specks of verdigris in protected areas of the reverse. Glossy medium brown and chocolate. MDS with strike doubling from die bounce on most of the profile and stars 1-8.



672. 1834 N-5 R5+ VF35. Large 8 & Stars. Small Letters Reverse. Five points sharper with a scuff of very fine hairline scratches on the highpoints of the portrait plus a few additional stray hairlines on the date and in the field at stars 12 & 13. Attractive glossy woodgrained mix of medium brown and chocolate. The planchet is completely free of the roughness and verdigris so often encountered on this tough variety. MDS. CC#9 in the Noyes census, his photo #27920. Ex Walter Breen 11/58-Admiral W. S. Bitler 4/61 (via Abe Kosoff)-R. E. Nafziger, Jr.-Del Blaud 4/79-Ed Jasper.



673. 1834 N-5 R5+ VF25. Large 8 & Stars, Small Letters Reverse. Double Profile. Ten points sharper with some light contact marks, including a small rim nick under the 3 and another under the stem tip. Lightly cleaned, now retoned a rather glossy bluish steel brown, the reverse a couple shades lighter than the obverse. The planchet is free of any hint of roughness. MDS. A sharp double profile extends from the forehead down to the chin.



674. 1834 -5 R5+ VG10. Large 8 & Stars, Small Letters Reverse. Double Profile. Glossy chocolate brown. A few light rim nicks at stars 6-8 and another at star 11. Smooth planchet, no roughness or verdigris. MDS with a fine double profile at the brow, lips, and chin. A nice lower grade example of this tough "Redbook" variety.

675. Group of 17 cents, 1834-1839. Grades range from AG3 to F12, average VG7. 1834 (1) 1835 (4) 1837 (6) 1838 (3) 1839 (3) All different die varieties. Lot of 17 coins.



676. 1835 N-4 R4+ VG8+. Sharpness F12 with a few dull, faint scratches in the obverse fields and very fine roughness on the right side of the reverse. Glossy medium brown. MDS. Ex Johnnie Dillow 3/81-Ed Jasper.

RARE TERMINAL CUD 1835 N-4



677. 1835 N-4 R4+ G4. Rather glossy chocolate with medium brown highpoints. The date is clear but portions of the reverse legend are weak. Rare LDS with a strong cud break at NITED.



678. 1835 N-5 R2 MS60. Attractive lustrous light bluish steel brown with satiny frost covering both sides. A dull rim nick at IT in UNITED. A dull nick over TE in STATES. are the only defects. MDS. This is the Wright plate coin for the variety. Ex R. S. Brown, Jr., Superior 9/30/86:770-Frank McElwain.



679. 1835 N-5 R2 AU58. Glossy bluish steel and chocolate with traces of faded red in protected areas. Nearly flawless, a tiny diagonal nick under E in CENT is the only mark. M-LDS.

680. 1835 N-9 R4+ G5. A couple points sharper with many light nicks on both sides. Glossy medium brown. The date and legends are clear. M-LDS with a sunken retained cud over ERIC and the reverse rotated 45 degrees CW.



681. 1835 N-10 R4+ F12. Double Profile. Sharpness VF30 but covered with fine porosity. Dark olive brown and chocolate with lighter steel brown highpoints. MDS. A relatively strong double profile extends from the forehead down to the chin plus double and triple outlines on stars 1-12. A variety that's seldom seen with a double profile.

682. 1835 N-11 R5- G6 . Smooth Glossy Steel brown and chocolate with some lighter brown woodgrain toning on the obverse. There is a small flake out of the planchet on the neck. Otherwise choice and relatively mark free. Rare terminal die state with a large cud break below U and the wreath ribbon. Very nice for the grade. LDS.



683. 1835 N-12 R4+ VF30. Slightly sharper with a long, thin nick under star 5 and a few light nicks in the center of the reverse. Glossy medium brown with steel brown highpoints. E-MDS, double and triple outlines to stars 2-13 from die bounce. Noyes photo #27964. Ex John D. Wright 6/28/77-unknown-1987 EAC Sale. lot 501-Ed Jasper.

684. 1835 N-14 R2 ANACS graded EF45. EAC grade net VF35. Head of 1836. Glossy light to medium brown with steel brown highpoints. A fresh nick under 18 and a small carbon spot left of the first S in STATES. MDS.



685. 1835 N-14 R2 AU50. Head of 1836. Glossy light to medium brown with bluish steel overtones. A pair of tiny rim nicks at N1 in UNITED and a speck of darker toning above that D. LDS.

686. 1835 N-16 R2 VF35+. Head of 1836. Glossy medium brown gently woodgrained with bluish steel brown on the obverse. A small spot of darker olive toning over star 11. Attractive for the grade, close to EF40. MDS.



687. 1835 N-18 R4+ G6. Lightly cleaned, now retoned glossy bluish steel brown with medium brown and chocolate in protected areas. Some fine hairline scratches under CENT. MDS. the reverse rotated 30 degrees CW. Ex Tom Reynolds 9/87.



688. 1836 N-1 R1+ AU55. Lustrous medium brown and chocolate with golden tan and faded mint red in protected areas. A couple tiny rim nicks at stars 6 & 7, otherwise virtually flawless. LDS with the die cracks clear and light die roughness covering the obverse fields.



689. 1836 N-7 R4 AU50. Choice glossy light to medium brown. A couple tiny ticks on the chin and a speck of reddish brown toning right of star 11, otherwise flawless. E-MDS. Tied for CC#4. Ex Willard C. Blaisdell 9/76-Del Bland 4/81



690. 1837 N-3 R1 MS62. Choice glossy light golden brown with hints of bluish steel overtone. Underlying satiny mint luster covers both sides. The only marks are a tiny nick right of the nostril, a faint hairline up from star 12 to right of star 11. Excellent eye appeal, close to choice. MDS.

691. 1837 N-4 R2 VF30. Glossy medium brown delicately woodgrained with olive brown. A spot of dark toning on the nostril and a planchet flake on the rim off the stem tip are the only marks on choice, smooth surfaces. LDS. Ex McLaughlin & Robinson Auctions 2/89:427.

692. 1837 N-5 R2 VF35. Plain Hair Cord with Small Letters Reverse. Glossy chocolate brown with splashes of darker reddish chocolate, mostly on the reverse, and a few of those splashes contain traces of extremely fine roughness. EDS.



693. 1837 N-8 R1 MS64. Choice lustrous bluish steel brown with 15% of the mint red remaining. The satiny mint luster covers even the highest points of the design. Virtually flawless. A very tiny rim nick over star 10 and a speck of darker toning at the dentils over the first T in STATES can help identify this beautiful cent. Sharply struck E-MDS. Ex Doug Bird.

694. 1837 N-11 R1 EF45+. Beaded Hair Cord. Attractive glossy medium brown with frosty luster in protected areas. A couple dull nicks under the eye and a faint struck-through line that meanders from the nostril down to star 2, as struck. MDS.

695. 1837 N-12 R3- SEGS graded AU50. EAC grade EF40. Beaded Hair Cord. Accessory E Variety. The obverse is glossy reddish chocolate and steel brown, the reverse a delicately woodgrained mix of chocolate and olive brown. Some tiny dark spots of minor roughness around star 11 are the only defects. EDS.

696. 1837 N-13 R2+ EF40. Slightly sharper with a few light contact marks on the obverse, including a dull nick in the field off the nose tip and a hairline right of star 4. Glossy medium brown the reverse with some overtones of sea-green. MDS.



697. 1837 N-14 R2 NGC graded MS64 Brown. EAC grade MS60. Choice glossy light brown with steel brown highpoints. Attractive underlying frosty luster covers the fields. MDS.

EQUAL SIXTH FINEST KNOWN 1837 N-16
EX WILLARD BLAISDELL-TED NAFTZGER



698. 1837 N-16 R3+ MS60+. Lustrous bluish steel brown with underlying faded red covering the satiny fields. A light hairline scratch on the chin extends down into the field at the throat and a speck of darker olive toning shows in the field under the hair bun, plus there is a tiny rim nick right of the second S in STATES. Otherwise this attractive coin is choice. MDS. Tied for CC#6. Ex Judge Sawicki, Stack's 2/27/54:677-Willard C. Blaisdell 9/76-R. E. Nafziger, Jr.



699. 1837 N-17 R4 EF40. Glossy medium brown with a small spot of reddish brown toning close over star 2 and a lightly abraded spot above the bust tip. A diagonal nick over the C in CENT is the notable contact mark on otherwise smooth and very attractive surfaces. E-MDS with a rim cud break from star 5 to star 6.5. Noyes photo #27871. Ex Larry Whitlow 4/79-Ed Jasper.



700. 1837 N-17 R4 VF25. Sharpness EF40 with "March 24 1840" lightly scratched into the field before and above the portrait. Otherwise smooth and free of defects. Nice glossy light to medium brown. LDS with many rim cud breaks on the obverse and a raised retained cud break between the die cracks under the wreath stem (otherwise free of rim breaks...). Important as a die state.



701. 1868 N-4 R2 AU50. Mint state sharpness with a patch of light corrosion at the hair bun and a rim nick above star 8. Otherwise the surfaces are satiny and very attractive. Lustrous medium brown. M-LDS with a thin cud break in the curl above the second 8.

702. 1838 N-7 R1 AU55. Sharpness mint state but lightly cleaned, now retoned reddish medium brown. A shallow planchet flake at the dentils over E in UNITED is the notable mark. M-LDS with rim cud breaks at ED-ST. Removed from a PCGS slab graded MS61 Brown (PCGS label included). Ex Dr. Bob Shalowitz 1990.

703. 1838 N-8 R1 EF45. Attractive glossy medium brown. A pair of small nicks off the bust tip and another on the shoulder over the 3. Otherwise the surfaces are excellent. E-MDS. Ex R. S. Brown, Jr. (privately).



704. 1838 N-10 R1 EF40+. Sharpness AU50 with some light contact marks, including some nicks in the field under the chin and on the cheek. Lightly cleaned, now retoned frosty light olive with some reddish chocolate in protected areas. MDS.

705. Pair of cents, 1838 & 1839. 1838 N-7 R1 VF25. 1839 N-5 R2 VF20. Booby Head. Both are sharper with defects. Lot of 2 coins.



706. 1839/6 N-1 R3+ VG8. Overdate 9 over 6. Glossy medium brown and chocolate. Some shallow pitmarks at TE in STATES and a small rim bruise at star 4. Overall attractive for the grade. MDS, Newcomb state II. The crack from the dentils to the nose appears as a faint, dull wave in the field.



707. 1839 N-4 R1 EF40. Silly Head. The obverse is glossy steel brown and chocolate, the reverse a lighter glossy medium brown. A shallow nick-like planchet chip over star 11 is the only defect. MDS. Attractive for the grade.



708. 1839 N-5 R2 MS60+. Booby Head. Lustrous light bluish steel brown with traces of mint red in protected areas on both sides. A tiny nick on the cheek, faint traces of an old fingerprint at star 8, and a speck of very light carbon at the dentils under the wreath are the notable defects, and they are all trivial. LDS. An attractive cent.

709. 1839 N-8 R1 EF40. Head of 1840. Ten points sharper but lightly cleaned, now retoned a slightly glossy steel brown with darker olive brown in protected areas. A couple tiny nicks on the neck, a couple more under star 12, and a rim nick left of star 1 and over star 6. Sharply struck E-MDS.



710. 1839 N-11 R1 MS60. Booby Head. Lustrous light bluish steel and golden tan with sea-green overtones and traces of faded mint red in protected areas of the obverse. A tiny rim nick at star 11 and some fine planchet laminations and flakes at the bottom of the reverse, as struck. The surfaces are satiny and very attractive. M-LDS.



711. 1839 N-12 R4+ VF20. Booby Head. Glossy medium brown delicately woodgrained with chocolate brown. A few light nicks of no consequence plus several tiny planchet lamination flakes, including one at the dentils left of star 3, another under star 13, and a faint streak of flakes from the base of E in CENT to the C in AMERICA, all as struck. MDS with a clear die crack from the dentils to the nose. Graded VF25 by Bland. Ex Chris McCawley-Dennis Mendelson. Superior 9/21/98:1683.



712. 1839 N-13 R2 VF35. Booby Head. Glossy chocolate brown. The surfaces are smooth and nearly flawless, a shallow planchet flake at the dentils left of star 3 and a nick at F-A are the only defects. LDS. Very nice for the grade.

713. "The Cent Book" by John D. Wright. Hardbound. Covers all the die varieties of cents from 1816 to 1839. Autographed on request. Donated lot, all proceeds to EAC.

714. "The Die Varieties of United States Large Cents 1840-1857" by John R. Grellman, Jr. Hardbound copy of the 2001 edition. Autographed on request. Donated lot, all proceeds to EAC.

EQUAL 5TH FINEST KNOWN 1840 N-1 SMALL DATE



EQUAL 3RD FINEST KNOWN 1840 N-5



715. 1840 N-1 R2 MS60. Small Date. Frosty light bluish steel and tan. A small spot of darker olive brown toning in the field under the throat is the only defect. Satiny and attractive. M-LDS, die state b. Tied for CC#5. Ex Superior 10/2000:1427.

716. 1840 N-5 R1 MS63. Large Date. Lustrous light bluish steel brown with 10% of the original mint red remaining on the obverse, 20% on the reverse. Two very tiny specks of darker toning at the hair under star 7. The only contact marks are a very faint hairline on the cheek left of the earlobe and another over ONE. M-LDS, die state b. Excellent eye appeal, tied for CC#3.

717. Group of 19 cents, 1840-1847. Grades range from G6 to VF20, average VG8. 1840 (4) 1842 (2) 1843 (3) 1844 (2) 1845 (2) 1846 (5) 1847 (1) Lot of 19 coins.

NICE IMPAIRED PROOF 1841 N-1



718. 1841 N-1 R5 Proof-50. Proof-only variety. Sharpness better but cleaned, now retoned glossy medium brown with some golden tan on the reverse. Coated with a very thin layer of lacquer. The fields are no longer reflective due to the cleaning and appear closer to frosty or matte, probably due to microscopic etching from a chemical agent used for the cleaning. Nice eye appeal but it would look better if the lacquer was removed and it was recolored to a more uniform brown tone.



719. 1841 N-3 R2 PCGS graded MS64 Brown. EAC grade MS60. Lustrous bluish steel brown, the obverse with some reddish steel overtones, probably from dipping in a solvent of some sort. A bit of Blue Ribbon or similar protectant and a proper brushing should improve the eye appeal of this cent. No spots or notable signs of contact, a tiny planchet flake at the dentils under the stem tip is the best identifying mark. LDS, die state d. Tied for CC#6.



720. 1841 N-6 R1 AU55. Glossy chocolate and medium olive brown with overtones of bluish steel and traces of faded mint red in protected areas. A speck of reddish verdigris in the field right of star 3 and some faint contact marks in the field right of star 5 are the only marks. The fields are smooth and slightly reflective. E-MDS, die state a.

SIXTH FINEST KNOWN 1842 N-5



721. 1842 N-5 R3+ AU50+. Large Date. Sharpness closer to mint state with a small pitmark or shallow planchet flake in the field over star 1, and this mark is surrounded by a larger spot of dark olive brown toning. Otherwise the surfaces are very nice, a couple tiny ticks on the jaw from choice. Attractive glossy light to medium brown with frosty cartwheel luster covering both sides. Sharp EDS, die state a. The fields are hard and slightly reflective, especially the reverse. CC#6.

EQUAL SEVENTH FINEST 1842 N-9



722. 1842 N-9 R2 MS60. Near gem quality except for a planchet fissure on the rim above the O in OF and a smaller one over the M, plus a thin planchet lamination in the field over ONE, all as struck. Otherwise this cent is satiny and flawless with outstanding eye appeal. Lustrous light steel brown. 15% of the mint red remaining. MDS, die state b. Tied for CC#7.

SCARCE EARLY DIE STATE 1843 N-11



723. 1843 N-11 R2-AU55. Sharpness near mint state with a very thin planchet lamination crossing the reverse from the rim at I in UNITED to the second A in AMERICA. The only contact marks are some very tiny ticks under the C in CENT down to the leaf under U. Frosty medium brown with small splashes of dark olive, mostly in the wreath. Scarce EDS, die state a.

724. 1844 N-1 R1 AU50. Glossy dark chocolate brown, the obverse woodgrained with some lighter chocolate. A thin nick on the cheek is the notable defect. MDS, die state c, with a small low spot at the hair under star 6.

725. 1844 N-4 R1+ AU50. Glossy light brown. A spot of reddish verdigris inside the bottom of the 8, otherwise free of defects. LDS, die state d. Tiny rim cud breaks at stars 4 & 5. Softly struck on the coronet tip, as usual.

726. Group of four cents, 1844-1848. 1844 N-1 R1 VF35. M-LDS, die state d. 1845 N-9 R2 VF25. EDS, die state a. 1848 N-4 R4 VF25. MDS, die state b. 1848 N-6 R1 VF35. M-LDS, die state d early. The first two are very slightly sharper with minor defects. Lot of 4 coins.

727. 1845 N-4 R1 AU58. Mint state but dipped, now retoned a frosty golden tan. A small nick right of star 4 and another on the rim to the left. MDS, die state c. Removed from an NGC slab graded MS62 Brown. Ex J. R. Frankenfield, Superior 2/17/01:1296.



728. 1845 N-13 R2+ AU50+. Slightly sharper with a couple small nicks at star 12 and a spot of dark crud in the dentils over AM. Glossy chocolate and bluish steel brown with traces of faded mint red on both sides. MDS, die state a.



729. 1846 N-8 R1 MS60. Lustrous bluish steel brown and light olive with hints of faded red in protected areas of the reverse. A small nick on the throat and a shallow planchet flake in the field off the nose tip, as struck. LDS, die state b. Nicely struck and attractive.

RARE PRE-TERMINAL DIE STATE 1846 N-15



730. 1846 N-15 R4+ VG10. Glossy medium brown and chocolate. A nick left of the U is the only notable mark. LDS, die state c late, with a raised retained cud break over UNITE. A rare late, but not terminal, die state.

EQUAL THIRD FINEST 1847 N-5



731. 1847 N-5 R3+ MS60. Frosty bluish steel brown with generous traces of faded mint red on both sides. A tiny nick on the left foot of N in ONE is the best identifying mark, and it is barely visible. E-MDS, die state a. Sharply struck except for the coronet over LIB, which is only slightly weak. Tied for CC#3.

RARE EARLY DIE STATE 1847 N-12



732. 1847 N-12 R3+ EF40. Slightly sharper with a few too many tiny nicks for the higher grade. Frosty steel brown with delicate overtones of bluish steel. Very rare EDS, die state a, without any die cracks on either side.



733. 1847 N-21 R1 PCGS graded AU58. EAC grade AU58+. Frosty bluish steel brown with 10% of the red remaining on the obverse, 25% on the reverse. A couple tiny specks of light carbon over star 3 and a spot of dark olive toning at D-S. Very close to mint state. EDS, die state a.

734. 1847 N-23 R5 VF20. Glossy light to medium brown, the reverse not as glossy as the obverse. No notable defects. LDS, die state e, with a triangular rim cud break over the second S in STATES. Only 10 known in this die state, and the cud is clear on this example.



735. 1847 N-24 R1 MS63. Choice lustrous bluish steel brown with 15% of the red remaining, mostly on the reverse. A very faint hairline down the upper half of the neck and an even weaker one from the chin toward star 3 are the only marks, and they are trivial. Great luster and eye appeal. Nicely struck MS, die state c (Newcomb's old #9). Not in the overall condition census but tied for finest of the die state.

736. 1847 N-24 R1 EF45. Slightly sharper but lightly cleaned, now retoned a frosty light olive and golden tan with some reddish steel overtone on the reverse. A very tiny rim bruise at M. MDS, die state c (Newcomb's old #9).

737. Group of 22 cents, 1847-1856. Grades range from AG3 to VF20, average VG7. 1847 (2) 1848 (2) 1849 (2) 1851 (4) 1852 (1) 1853 (1) 1854 (2) 1855 (4) 1856 (4) Lot of 22 coins.

738. 1848 N-5 R4 VF25. Ten points sharper but cleaned now partially retoned glossy steel brown with underlying very faded red and a splash of darker olive toning on the curl at the shoulder. Free of notable signs of contact. Deserves a better retoning. M-LDS, die state e.



739. 1848 N-6 R1 AU55. Lustrous bluish steel brown with traces of a reddish brown fingerprint in the field under the chin and a tiny nick on the coronet over I in LIBERTY. Scarce LDS, die state e., with a tiny cud break on the left top of M. Ex R. S. Brown, Jr., 6/2/2002:516.

740. 1848 N-7 R1 AU50. Slightly sharper but lightly cleaned so the highpoints are a few shades lighter than the fields. A splash of reddish brown inside the wreath and several specks of carbon or light verdigris in this same area. Otherwise a glossy bluish steel brown with hints of very faded mint red in protected areas of the obverse. LDS, die state b. Ex R. S. Brown, Jr., Superior 9/30/86:1140-Dr. Thomas S. Chalkley, Superior 1/28/90:988.



741. 1848 N-8 R3- AU50. Five points sharper with a light dusting of fine reddish verdigris in the field above the head. Otherwise free of defects. Frosty medium brown and chocolate, the area above the head with reddish brown tones. Sharply struck E-MDS, die state b. Removed from a NGC slab graded MS63 Brown (NGC label included). Ex J. R. Frankenfield, Superior 2/17/01:1452.

742. 1848 N-9 R1 VG10. Five points sharper but recolored glossy dark steel brown and chocolate. A light rim bruise at star 11. Extremely rare LDS, die state e, with rim cud breaks at D-ST and TE in STATES, one of only 4 known with this intermediate series of cuds. Ex J. R. Grellman 4/4/92-ELK



743. 1848 N-9 R1 VF25. Glossy chocolate with lighter brown highpoints and splashes of dark olive on both sides, these dark areas with a dusting of very fine carbon. LDS, die state f, with a series of rim cud breaks at D-STATE. One of 16 known with these cud breaks. Ex J. R. Grellman 4/4/92-Evan Kopald.

744. 1848 N-11 R5 VG10. Sharpness VF25 but granular. No verdigris. Some rim nicks on the obverse, strongest over star 5. Slightly glossy dark olive with medium brown highpoints. Rare LDS, die state e, with three rim cud breaks on the reverse.

745. 1848 N-12 R1 EF45+. Very close to AU50. Nice glossy light brown with frosty luster covering the protected areas. A few tiny nicks, none notable. M-LDS, die state c. Removed from an NGC slab graded MS63 Brown (NGC label included).

746. 1848 N-13 R4+ VF20. Slightly sharper with some nicks on the face and neck and a small dig under star 7. Rather glossy medium brown and olive. LDS, die state b, with a rim cud break over TES, about two dozen known with the cud.

747. 1848 N-17 R1 AU50. Sharpness closer to mint state but lightly cleaned and nicely retoned frosty light to medium brown with hints of faded red in a few protected areas. No spots or contact marks. MDS, die state b. Removed from an NGC slab graded MS62 Brown (NGC label included). Ex J. R. Frankenfield, Superior 2/17/01:1471.



748. 1848 N-23 R3+ AU50. Glossy light to medium brown with frosty luster covering the protected areas. No notable signs of contact, a tiny speck of darker toning in the field under the hair bun the best identifying mark. LDS, die state b. Removed from an NGC slab graded MS63 Brown (NGC label included). Not in the overall condition census but finest of the late state. Ex Heritage 3/2002-Evan Kopald.

BEVELED EDGE "1849" BLANK PLANCHET



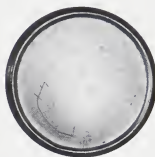
749. 1848 N-31 R2+ AU50. Slightly sharper with a faint hairline scratch from star 6 to star 9. Nice glossy light brown with frosty luster in protected areas. E-DS, die state b. Removed from an NC slab graded MS63 Brown (NGC label included). Ex J. R. Frankenfield, Superior 2/17/01:1500.



750. 1848 N-36 R5 VF25. Five points sharper but recolored glossy medium brown and chocolate. A thin nick close before the nose tip is the only mark. E-MDS, die state a.



751. 1849 N-2 R2 EF45. Glossy medium brown and chocolate with some bluish steel in protected areas. A faint hairline from the chin to star 3 is the only mark. LDS, die state bb, with extensive, strong crumbling on the reverse.



752. Blank planchet, probably made for 1849 cents, with obviously beveled edges like those seen in state b of 49N8 and in state c of 49N5. Glossy chocolate brown. Lightly scratched on one side is "CC M 1857" in three lines. The edges are clearly different than on other blank planchets in either stage I (rims not upset) or stage II (rims upset ready for striking). Weight 166.5 grains. This planchet helps explain the odd beveled edges seen on the two 1849 varieties mentioned. The beveled edges match perfectly when compared to struck cents of those varieties. I suspect this planchet was either supplied by a different vendor or was part of a trial to look for better designs to help feed planchets into the presses. This is the only blank with beveled edges seen or heard of by this cataloger. Comes with an interesting very old envelope marked "Copper/U.S./Blank Large Cent/Phila Mint/1850" in excellent hand. The 1850 date would help confirm the connection to those two varieties of 1849. Ex Harlan Berk 9/95-John D. Wright.



753. 1849 N-28 R3 AU50. Glossy medium brown and chocolate with frosty luster in protected areas. Two tiny nicks right of star 4, a tiny rim nick at R1, and a small planchet flake on the rim under the ribbon tip. EDS, die state a. Removed from an NGC slab graded MS63 Brown (NGC label included). Ex J. R. Frankenfield, Superior 2/17/01:1563



754. 1850 N-19 R2 AU58. Mint state sharpness but lightly cleaned, now retoned frosty golden tan. A rim nick under the 1 is the notable mark. EDS, die state a, with all the fine die lines clear. Ex R. S. Brown, Jr., Superior 6/2/2002:832.

FULL MINT RED 1851 N-2



756. 1851 N-33 R5 ANACS graded AU details net EF45. EAC grade net VF30. Sharpness EF45 with many tiny contact marks, strongest on the bust and curl over the 8. Glossy medium brown, some frosty lighter brown in protected areas. MDS, state a late.

EQUAL CC#4 1851 N-33



755. 1851 N-2 R1 MS64. Mint red fading to steel brown on the highpoints, about two-thirds of the mint color remaining. No spots or notable signs of contact. LDS, die state b. A nice original example.

757. 1851 N-33 R5 NGC graded MS63 Brown. EAC grade MS62+. Lustrous light bluish steel brown with underlying faded red on both sides, especially the obverse. The obverse is choice, virtually flawless. The only notable defect is a splash of reddish steel at ON, and this area is matte while everything else is lustrous. A great cent in spite of this stain, tied for CC#4. MDS, die state b early. Ex Rick DeSanctis.



758. 1852 N-8 R2 MS63. Lustrous bluish steel brown with 25% of the red remaining on the obverse, 10% on the reverse. The notable mark is a small spot of dark bluish steel toning in the dentils left of star 1. Nicely struck M-LDS, die state c. Ex Doug Bird 8/97.

759. 1852 N-11 R1 MS60. Frosty light bluish steel brown with faded mint red in protected areas. A small nick on the front edge of the eyebrow is the only notable mark. The surfaces are satiny and attractive, M-LDS, die state d. Removed from a PCGS slab graded MS64 Brown (PCGS label included).

760. Pair of cents with cud breaks, 1852 and 1855. 1852 N-23 R6- F15. Sharper by at least 10 points but cleaned, only partially retoned glossy chocolate brown. LDS, die state d, with rim cud breaks at AM and below the stem. A very rare die state, CC#3 of only 6 known with both cuds. 1855 N-4 R1 VF25. Ten points sharper but cleaned, partially retoned chocolate brown. M-LDS, die state c, with a single rim cud break at E in STATES.



761. 1853 N-13 R1 MS64. Mint red fading to steel brown, slightly more than half the original color remaining, mostly on the obverse. No spots or marks. M-LDS, die state b.

762. 1853 N-16 R1+ EF40. Slightly sharper with a small rim dent at CA in AMERICA. Otherwise choice. Nice glossy medium brown. M-LDS, die state b.

763. 1853 N-19 R1 ANACS graded UNC details, net AU55. EAC grade net EF40. Misaligned Dies. Slightly sharper but the surfaces are mostly matte due to microscopic roughness. May be improvable with a bit of Blue Ribbon and a decent brushing. No spots or marks. Mostly dull dark olive and steel with medium brown on the left half of the obverse. M-LDS, die state c, with the obverse grossly misaligned to K-9. Sharp strike doubling shows on the right side of the reverse.

764. 1853 N-25 R1 EF40. Glossy light to medium brown. No defects. LDS, die state c.



765. 1854 N-1 R3 F15. Peeled Lamination on Obverse. Glossy medium brown. Nothing special except that the upper half of the obverse has peeled away due to a split planchet. A remarkable example of this type of mint error. Ex Numismatic Enterprises 5/82-John D. Wright.

EQUAL CC#2 1854 N-17

EQUAL FINEST WITH 4 CUDS 1855 N-4



766. 1854 N-17 R1 MS64. Mint red fading to dark bluish steel brown, slightly more than half the original mint color remaining. A tiny speck of darker toning between two dentils over the C in AMERICA is the best identifying mark. E-MDS, die state b, with shallow low spots covering much of the neck and field around N in CENT. Tied for CC#2.

768. 1855 N-4 R1 MS63. Glossy tan and light bluish steel brown with underlying slightly faded mint red on both sides, especially on the obverse. A few specks of darker olive toning, including one right of the inner curl, plus a tiny rim nick between stars 3 & 4. LDS, die state f late, with four clear rim cud breaks over STATES plus a crack on the rim at S-O outlining where the final cud is forming. Tied for finest known honors among those with four cuds.



767. 1854 N-22 R4 MS60. Frosty light bluish steel brown with a few peeps of faded mint red. A lamination on the rim over D in UNITED and a small spot of reddish roughness under the T in CENT. E-MDS, die state a late. A shallow low spot covers the neck and jawline, as usual.



769. 1856 N-6 R1 MS64. Upright 5. Bright original mint red fading to light steel brown, about 90% of the red remaining. There are a half dozen tiny spots of darker steel toning on the obverse, the largest of these in the field off the nose tip. E-MDS, die state a. Tied for CC#4.

770. 1856 N-8 R 4 PCGS graded MS64 Red & Brown. EAC grade MS64. Upright 5. Slightly faded mint red mellowing to bluish steel brown, at least half the red remaining. A tiny nick on the rim right of star 10 and a speck of darker toning left of that star are the notable marks. MDS, die state b. Tied for CC#5. Ex Tom Reynolds 4/15/93-R. S. Brown, Jr. 4/24/95-Del Bland-Superior 9/7/97:139.

VERY RARE SINGLE RIM CUD 1856 N-13

MINT RED 1856 N-14 EQUAL CC#2



771. 1856 N-13 R1 VF30+. Glossy medium brown and chocolate. Smooth and defect-free. Very rare LDS, die state d, with a rim cud break from just above star 10 down to star 11. Only 11 known with this initial rim cud break.

772. 1856 N-14 R1 MS64+. Mint red mellowing to bluish steel brown, 75% of the original color remaining. No spots or contact marks. M-LDS, die state b. Struck better than most with only minor weakness on the coronet over LIB and in the field above the head. Tied for CC#2. Ex Dr. Philip Ralls.

The 2003 EAC Convention Sale, April 26, 2003

773. 1857 N-4 R1 EF40. Small Date. Slightly sharper with a few light marks on the cheek and traces of greenish crud in protected areas of the reverse. Glossy light to medium brown. MDS.

774. 1857 N-4 R1 F12. Small Date. Glossy light to medium brown. A small rim bruise under the ribbon tip and a few light contact marks on both sides. MDS.

775. A nice copy of History of U. S. Mint Coinage by George G. Evans published in commemoration of the U.S. Mint Centennial 1792-1892 (though actually copy wrighted 1885). Published in Philadelphia. Approximately 190 pages.

**LEATHER-BOUND COPY OF THIS 2003 EAC SALE CATALOG. COPY #12 OF 12.
ALL PROCEEDS TO EAC.**

776. Deluxe leather bound presentation copy of the 2003 EAC Sale. Signed and Numbered. One of only twelve leather bound copies made. All proceeds from the sale this lot go to EAC.

END OF SALE



P.O. Box 2967 • Edmond, Oklahoma 73083

405-341-2213