



Chris McCawley and Bob Grellman

present the

**2005 EAC Convention Sale**

April 23, 2005

2005 EAC Sale 23 April 2005  
 Total Bids ( 276518.00)

Lot	Bid	Lot	Bid	Lot	Bid	Lot	Bid	Lot	Bid	Lot	Bid	Lot	Bid
1	700	61	280	121	260	181	130	241	130	301	150	361	1400
2	360	62	75	122	125	182	420	242	260	302	70	362	650
3	3250	63	425	123	425	183	375	243	190	303	80	363	2200
4	550	64	60	124	150	184	170	244	160	304	0	364	200
5	425	65	50	125	5500	185	650	245	150	305	240	365	260
6	700	66	95	126	350	186	85	246	65	306	260	366	1200
7	450	67	80	127	110	187	2000	247	220	307	240	367	110
8	700	68	65	128	160	188	100	248	650	308	700	368	750
9	0	69	120	129	260	189	1400	249	80	309	160	369	350
10	1600	70	40	130	170	190	425	250	75	310	350	370	30
11	1600	71	475	131	335	191	150	251	170	311	5000	371	2200
12	450	72	130	132	1100	192	220	252	425	312	3750	372	150
13	340	73	95	133	160	193	110	253	600	313	1200	373	170
14	850	74	100	134	260	194	0	254	3000	314	160	374	45
15	325	75	85	135	700	195	1400	255	1225	315	950	375	280
16	0	76	100	136	130	196	170	256	1300	316	0	376	225
17	350	77	82	137	1600	197	100	257	280	317	650	377	130
18	325	78	80	138	260	198	65	258	80	318	95	378	2400
19	3500	79	90	139	260	199	0	259	150	319	120	379	300
20	150	80	90	140	550	200	1700	260	1700	320	300	380	80
21	110	81	60	141	450	201	1100	261	70	321	475	381	600
22	110	82	120	142	750	202	1000	262	160	322	350	382	1500
23	180	83	5500	143	375	203	2200	263	200	323	425	383	300
24	950	84	900	144	260	204	325	264	170	324	300	384	20
25	900	85	1000	145	650	205	150	265	2600	325	350	385	750
26	1100	86	900	146	300	206	150	266	650	326	450	386	1200
27	280	87	2800	147	290	207	75	267	375	327	300	387	1700
28	175	88	3000	148	1000	208	100	268	45	328	900	388	240
29	850	89	1350	149	350	209	375	269	1300	329	850	389	2200
30	70	90	325	150	260	210	650	270	75	330	600	390	200
31	550	91	800	151	300	211	1600	271	650	331	300	391	300
32	150	92	2800	152	200	212	390	272	750	332	220	392	150
33	425	93	8000	153	350	213	700	273	1100	333	350	393	60
34	0	94	900	154	500	214	950	274	65	334	375	394	475
35	7000	95	425	155	700	215	85	275	180	335	160	395	160
36	500	96	475	156	140	216	220	276	200	336	450	396	550
37	240	97	280	157	1000	217	160	277	50	337	260	397	600
38	0	98	550	158	325	218	550	278	160	338	775	398	280
39	350	99	425	159	110	219	85	279	250	339	1600	399	500
40	500	100	1900	160	100	220	110	280	160	340	650	400	260
41	650	101	280	161	1200	221	90	281	85	341	550	401	325
42	80	102	120	162	260	222	325	282	1200	342	550	402	85
43	600	103	700	163	220	223	150	283	100	343	500	403	170
44	110	104	525	164	6500	224	110	284	160	344	1100	404	180
45	110	105	280	165	1200	225	90	285	150	345	450	405	130
46	1750	106	160	166	1000	226	115	286	220	346	60	406	180
47	85	107	160	167	75	227	650	287	400	347	450	407	120
48	80	108	240	168	320	228	200	288	375	348	170	408	200
49	650	109	220	169	400	229	1100	289	110	349	150	409	750
50	0	110	280	170	350	230	180	290	135	350	30	410	160
51	1100	111	220	171	150	231	50	291	210	351	1100	411	900
52	300	112	601	172	130	232	350	292	1100	352	80	412	1800
53	400	113	900	173	115	233	425	293	55	353	160	413	140
54	70	114	325	174	1400	234	160	294	1200	354	280	414	240
55	280	115	750	175	275	235	45	295	650	355	850	415	900
56	180	116	450	176	75	236	85	296	130	356	275	416	900
57	1000	117	1000	177	260	237	110	297	60	357	160	417	1600
58	65	118	450	178	525	238	240	298	260	358	140	418	120
59	100	119	280	179	180	239	375	299	45	359	130	419	150
60	130	120	375	180	120	240	55	300	85	360	5500	420	260

2005 EAC Sale 23 April 2005

Lot	Bid	Lot	Bid
421	350	484	700
422	350	485	180
423	800	486	230
424	300	487	900
425	90	488	550
426	280	489	475
427	100	490	160
428	260	491	280
429	0	492	400
430	160	493	300
431	190	494	85
432	180	495	900
433	400	496	180
434	425	497	220
435	550	498	75
436	165	499	400
437	800	500	425
438	425	501	1400
439	180	502	300
440	55	503	220
441	110	504	475
442	350	505	525
443	475	506	350
444	65	507	300
445	350	508	1100
446	225	509	350
447	140	510	525
448	90	511	140
449	110	512	260
450	140	513	150
451	190	514	240
452	80	515	200
453	80	516	175
454	350	517	300
455	110	518	1000
456	140	519	110
457	75	520	550
458	35	521	120
459	50	522	15
460	80	523	200
461	180		
462	180		
463	100		
464	350		
465	170		
466	1800		
467	350		
468	1100		
469	240		
470	1100		
471	650		
472	170		
473	160		
474	160		
475	260		
476	50		
477	80		
478	110		
479	75		
480	800		
481	200		
482	200		
483	800		

Chris McCawley - Bob Grellman

present

*the*

# *2005 EAC Sale*

*featuring*

**The David Garvin Collection  
of Early Date Cents**

April 23rd, 2005, 7:00 p.m.  
at the Radisson Hotel Annapolis

210 Holiday Court, Annapolis, Maryland 21401

Lot Viewing will be held at the Early American Coppers  
Club Convention, April 21-23, 2005.

This is a private sale. You must be a member of EAC  
to participate.

Please see terms of sale.

Welcome to the 2005 EAC Sale. This year's sale features a remarkable offering of nice collector coins donated to the Club by long time EAC member David Garvin. All proceeds from the sale of these lots go to the club. Each lot from David Garvin carries a notation "**all proceeds to EAC**" in the catalog. So please take special note of this especially generous donation to EAC.

There are many other notable Coppers in the sale, something for everyone. The half cents are highlighted by a rarely offered example of 1806 C-3. Among the early date cents there is a condition census level 1794 S-19a, and also an exceptional example of 1797 S-142 from the David Garvin Collection. A very nice group from Ed Jasper spices up the middle dates, but a newly discovered 1825 N-1 is the star of this section of this sale. There are also several condition census late date cents. Have you ever seen a counterstamped 1799 cent? We have one, and an 1804 as well!

The sale will be held Saturday night April 23 at 7:00 p.m., at the Radisson Hotel Annapolis, in Annapolis, Maryland.

Mail bids should be sent to Bob's Florida address, fax bids will be accepted through the day of the sale at (405) 341 -1323.

Please feel free to call Chris at 405-341-2213 or Bob at 407-682-9592 to discuss any lot in the sale.

COLONIALS



1. 1787 Massachusetts Half Cent Ryder 1-D R4 VF30. Choice glossy medium brown and chocolate. The surfaces are very attractive but do show some microscopic striations covering the obverse fields. A premium example for the grade. Weight 73.6 grains.



2. 1787 Massachusetts Half Cent Ryder 3-A R4 F12. Sharpness VF30 with some microscopic roughness in the fields and several hairline scratches on both sides, strongest on the reverse (eagle side). Rather glossy chocolate brown with olive brown tones in protected areas. The date and legends are bold. Weight 72.2 grains.

HALF CENTS



3. 1793 C-4 R3 F12. Sharpness VF20 with microscopic roughness under a rather glossy medium brown patina. There is some darker olive brown toning in the most-protected areas but no traces of verdigris or notable corrosion. A long, thin nick at the rim left of the lower curls is the only notable mark. There are traces of lacquer or some similar protective substance on both sides, which would be easy to remove. The date is strong and the legends are clear except for ERICA, which was weakly struck. Overall decent eye appeal for the grade. LDS, Manley state 2.0. Weight 102.3.



55 15 4. 1794 C-3a R5 VG8. Small Edge Letters. Sharpness F12 or slightly better but covered with very fine granularity and the portrait shows some faint hairline scratches that blend into the slightly glossy dark steel brown and chocolate patina. No verdigris, and the only additional mark of any consequence is a small planchet chip on the rim at UN. The date is clear and the legends are strong. Manley state 2.0 early with the reverse rotated 10 degrees CW. Weight 103.2 grains.

60 6 1794 C-4a R3 VG7. Small Edge Letters. Sharpness EF40 but moderately corroded. The roughness is relatively uniform and there are no traces of verdigris. The date and legends remain clear. Slightly glossy dark steel brown and chocolate. M-LDS, Manley state 3.0. Weight 105.4 grains.



6 6 1794 C-4a R3 VG7. Small Edge Letters. Choice glossy medium brown with smooth, very attractive surfaces. Just a few trivial contact marks, including a light diagonal nick in the field off the chin and a tiny rim nick at the T in LIBERTY, plus a short pinscratch below TA in STATES. The date is bold and the legends are clear. LDS, Manley state 4.0. Very nice for the grade. Weight 103.1 grains.

THIN PLANCHET 1794 C-4

4 1 EST 1 K-A 7. 1794 C-4 Basal State-1. Small Edge Letters. Thin Planchet. The date is weak but readable while most everything else is gone. Just enough detail remains to be certain of the die variety, and the heavy swelling at the curls indicates the late die state as well. Slightly glossy very dark chocolate and steel brown. The surfaces are covered with light to moderate roughness. Struck on a thin planchet weighing only 80.2 grains. *Very rough, reverse missing*



60 10 8. 1794 C-5a R4+ VG8. Small Edge Letters. A couple points sharper with fine roughness effectively hidden under a glossy dark olive and steel brown patina. No verdigris and only a few trivial marks, including a thin vertical nick near the dentils right of the nose tip and a tiny planchet chip left of the first A in AMERICA. The date and legends are clear. MDS, the reverse rotated 45 degrees CW. Weight 103.4 grains.



9. 1794 C-5a R4+ G5. Small Edge Letters. Slightly sharper with a small depression at the dentils over LJ and a deeper planchet void at the opposing area at the bottom of the reverse, probably as struck. Otherwise the surfaces are smooth and attractive with only a couple minor marks, including a light rim nick at the bust tip and a few small, shallow marks near the rim left of the cap. Glossy dark steel brown and chocolate. The date is clear and the legends are complete except for some weakness at the bottom of the reverse. LDS, Manley state 2.0, the reverse rotated 30 degrees CW. Weight 106.6 grains. Ex Tom Reynolds.



10. 1794 C-7 R5+ VG8. Sharpness F15 but covered with uniform fine porosity. No verdigris, and the only marks are a dull nick on the center of the jawline, a barely visible rim bruise at the top of the cap, and a nick in the wreath under the N in UNITED. The date is strong and the legends are complete, although a few letters on the reverse are weak. Slightly glossy medium brown with some darker olive brown toning in protected areas. MDS, the reverse not rotated. Weight 105.7 grains.



11. 1794 C-9 R2 F15+. Glossy dark chocolate and steel brown delicately mottled with some lighter chocolate brown tones. The planchet is smooth and the only defects are a light diagonal nick on the throat and a faint scuff across the date that left the toning in that area a shade or two lighter than the rest of the planchet (perhaps a dry thumb wiped across the date). LDS, Manley state 3.0. An attractive example, close to VF20. Ex Stack's 5/97:362.

THIN PLANCHET 1795 C-2  
EST 1  
Smooth K-L

13. 1795 C-2 Basal State-1. Lettered Edge. Thin Planchet. The date is weak but readable and the portrait is complete, but nearly everything else is gone. Glossy medium brown and chocolate. Mostly smooth, but there is some minor roughness in the obverse fields. The edge lettering is nearly complete and rather strong considering the grade. Struck on a thin planchet weighing 87.7 grains.



14. 1795 C-5b R4 VG10. Thick, Clipped Planchet. Sharpness VF20 but covered with uniform microscopic granularity under a slightly glossy dark olive and steel patina. No verdigris, and the only marks are a couple very fine vertical hairline scratches near the dentils along the left side of the obverse. The best identifying mark is a small planchet clip that affects only the dentils under the 17. The date is weak (as always on these thick planchet strikes) but it is easily readable, and the legends are clear. The bisecting reverse die crack is strong and the reverse is rotated 15 degrees CCW. Weight 123.9 grains, clearly one of the thick planchet strikes from a cut-down spoiled large cent.



15. 1797 C-1 R2 VG8. 1 above 1. Sharpness F15 but lightly burnished and retoned a glossy dark steel brown and chocolate. The planchet is smooth, free of any trace of corrosion or verdigris, but there are a few contact marks. These include myriad hairline scratches on the portrait, a rim dent left of the base of the cap, and lighter rim bruises at D-S and IC. The date and legends are strong, including the stray 1 above the normal 1 in the date. MDS, Manley state 3.0. Weight 93.8 grains. Ex 1997 EAC browse.



16. 1795 C-1 R2 VG10. 1 above 1. Sharpness F15 with very fine roughness mostly hidden under a glossy dark olive brown patina. The only notable marks are a tiny depression off the right stem tip and a very small rim nick at IT in UNITED. The date is strong and the legends are clear, including the 1 above the 1 in the date. M-LDS, Manley state 4.0. RTY is weak and ICA is faint thanks to the advanced die failure of the later die state. Weight 88.0 grains.



3. 6  
17. 1797 C-1 R2 VG7. 1 above 1. Sharpness VG10 or slightly better with fine granularity covering the fields and protected areas. No verdigris, and the only mark is a dull rim nick or planchet chip at D-S. The date is strong, including the stray 1, and the legends are clear except where weakened by die failure. Dark steel brown, the raised areas rather glossy. M-LDS, Manley state 4.0. Weight 82.4 grains.

1. 1  
20. 1800 C-1 R2 F12. A few points sharper (especially on the reverse) but lightly cleaned and nicely retoned glossy chocolate brown with a couple small splashes of reddish chocolate toning in the center of the obverse. There are a few faint hairline scratches on the portrait and a very light rim bruise over ER in LIBERTY. A tiny planchet clip affects the dentils at the top of the reverse, as struck. Rare E-MDS, Manley state 2.0, with strong die clashmarks over NITE. Weight 86.9 grains.



3. 7.  
18. 1797 C-1 R2 VG8. 1 above 1. Struck over TAL Cent. A couple points sharper but lightly cleaned and retoned a glossy dark steel brown and chocolate. The planchet is completely free of any corrosion or roughness, but there are a couple dozen small, dull pinpricks scattered about the obverse and a smaller number of tiny contact marks on the reverse, none notable but too many to ignore. The date and legends are clear, except for the usual weakness at RTY and ICA that comes with the late die state. LDS, Manley state 5.0. The die failure now affects the tip of the nose, which flows into the field at right. Clear traces of the TAL undertype are visible at UNITED S. Weight 95.1 grains.

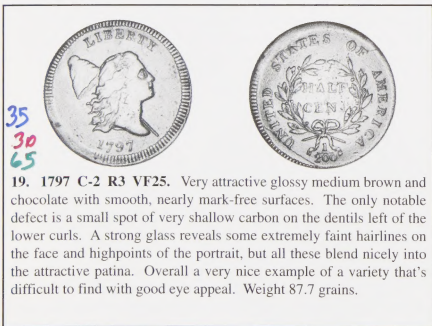
21. 1800 C-1 R2 VG10+. Glossy dark chocolate brown and steel. Smooth and attractive for the grade, a tiny rim bruise at TY the only notable defect. M-LDS, Manley state 4.0.

22. Trio of Half Cents, 1804-1804. 1803 C-3 R2 G5 MDS. 1804 C-9 R2 G5. Minor planchet clip, as struck. LDS with cud break at RTY. 1804 C-9 R2 G4 LDS with cud break at RTY. A couple are slightly sharper with minor defects. All have a clear date. Lot of 3 coins.

23. 1804 C-1 R3 VG7. Glossy medium brown and chocolate with a splash of reddish brown toning close under the hair ribbon. Smooth and attractive for the grade, free of any notable defects. The date is strong and the legends are clear. EDS, Manley state 1.0.



9. 1200  
55 24. 1804 C-4 R5 G6. Sharpness VG10 or so but the surfaces are slightly rough, the roughness strongest on the neck and cheek. No verdigris. The only contact marks are some rim bruises on both sides, including one at the L, another left of the hair ribbon, and two more at OF. Slightly glossy medium brown and chocolate. EDS, Manley state 1.0. The date and legends are strong. Looks better than the net grade and description might imply. Ex Bowers & Merena 11/18/94:2008- Steven Ellsworth collection 10/18/2000



35  
30  
65  
19. 1797 C-2 R3 VF25. Very attractive glossy medium brown and chocolate with smooth, nearly mark-free surfaces. The only notable defect is a small spot of very shallow carbon on the dentils left of the lower curls. A strong glass reveals some extremely faint hairlines on the face and highpoints of the portrait, but all these blend nicely into the attractive patina. Overall a very nice example of a variety that's difficult to find with good eye appeal. Weight 87.7 grains.





- 9  
50 10  
25. 1804 C-5 R4 VF30. Spiked Chin. Five points sharper than a very fine pinscratch on the throat and a couple more in the field under the hair ribbon. None of these marks is visible without a good glass and the eye appeal remains excellent. Attractive glossy medium brown and chocolate with traces of frosty lighter brown toning in a couple protected areas. M-LDS, Manley state 4.0. Ex Stack's 6/98:1034.



- 11 10  
26. 1804 C-5 R4 VF30. Spiked Chin. Five points sharper but lightly cleaned and nicely retoned glossy medium brown and chocolate with a few areas of darker olive toning in protected areas of the reverse. The surfaces are smooth and attractive. The only notable marks are a tiny rim nick at the T in UNITED and a couple barely visible rim bruises at OF.



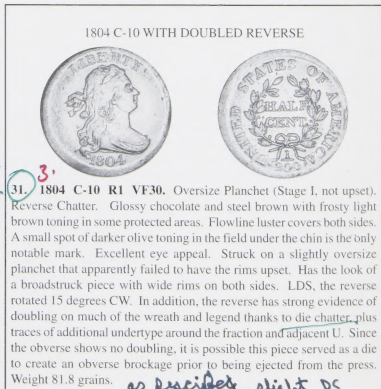
- 3  
27. 1804 C-6 R2 VF25. Spiked Chin. Slightly sharper with a dull nick on the neck plus a few other very minor contact marks scattered about the obverse, none notable. Glossy brown and chocolate, the reverse mottled with some lighter brown tones. EDS, Manley state 1.0.

28. 1804 C-6 R2 F15. Spiked Chin. Five points sharper but lightly cleaned and retoned glossy dark steel brown and chocolate. A small rim nick left of the date is the notable mark. EDS, Manley state 1.0.



8. 8  
29. 1804 C-6 R2 EF40+ (NGC AU55BN). Spiked Chin. Glossy chocolate and darker steel brown with traces of lustrous light bluish steel toning in protected areas of the reverse. There are some trivial contact marks, none notable, plus a small splash of reddish brown toning at the tip of the left wreath stem. M-LDS, Manley state 10.0. Braig state 7.0. An attractive example, close to EF45.

30. 1804 C-8 R1 F12. Spiked Chin. Sharpness VF30 but very lightly corroded and there is some dark scale clinging in protected areas. Slightly glossy medium brown with some reddish chocolate tones in addition to the dark scale already mentioned. E-MDS. Not as ugly as it might sound, but not a gem either. The spiked chin feature is clear.



M-HCX

The 2005 EAC Convention Sale, April 23, 2005

2.  
32. 1804 C-12 R2 VF25. Crosslet 4 without Stems. Sharpness EF40 with some light hairline scratches on the upper half of the obverse plus a few additional light contact marks scattered about both sides. Glossy chocolate and steel brown with frosty lighter brown toning in protected areas. MDS.



4.  
60

33. 1805 C-1 R2- VF35 (PCGS AU55). Small 5 without Stems. Sharpness EF40 or slightly better with a few too many light contact marks for the sharpness grade. The best identifying marks are a small spot of darker olive toning in the field under the end of the hair ribbon and a dull nick in the field above the L in HALF. The obverse is frosty medium brown delicately speckled with some darker steel tones while the reverse is mostly a frosty dark bluish steel brown with some lighter brown tones at the top. Nicely struck MDS, Manley state 1.0, the reverse rotate 25 degrees CW. Decent eye appeal in spite of the minor marks, and the PCGS grade reflects that.

RARE 1805 C-2



0  $\frac{V68}{75/150}$   
45

34. 1805 C-2 R5 VG10. Small 5 with Stems. Slightly sharper with myriad very fine hairline scratches covering the portrait with a few extending into the fields. None of these scratches is distracting and all blend perfectly with the glossy chocolate and steel brown toning. A very thin nick in the field left of the lower end of the hair ribbon is the best identifying mark. Sharply struck EDS with HALF CENT strong and the reverse rotated 15 degrees CCW. Excellent eye appeal for the grade in spite of the defects. At the lower end of the condition census for this rare variety. Weight 82.5 grains. Ex Gene Braig 4/93.

RARELY OFFERED C-3 SMALL 6 WITH STEMS  
EX NORWEB



70  $\frac{G5 V68}{75/10}$   
35 25

35. 1806 C-3 R6 G6. Small 6 with Stems. A few points sharper with very fine roughness in the fields and protected areas, strongest in the field right of the Y in LIBERTY. There are a few small patches of very light crud or verdigris on the obverse, mostly high on the shoulder, a collection of very tiny ticks on the face, and a dull rim nick over the E in STATES. The date and legends are strong. Somewhat glossy medium brown and chocolate. MDS, Manley state 2.0. Not perfect but still rather decent for the grade, and it comes with a nice provenance. Ex Norweb family collection, Bowers & Merena 10/12/87:54.

not quite as bad as picture X



5 13.

36. 1806 C-4 R1 AU50. Large 6 with Stems. Mint state sharpness but someone very lightly pincrated "CD" into the field before the face. There are a few light nicks on the face and neck plus a dozen small spots of dark olive toning scattered about the obverse, mostly in the field before the neck, plus a single one at the first A in AMERICA. Otherwise this piece is an attractive frosty medium brown with traces of faded mint red in protected areas of the reverse. Nicely struck E-MDS, Manley state 1.0, with the reverse rotated 30 degrees CW. The bust is not fully struck up, but it is better than most of this variety, as are the leaves at the top of the wreath.



3.

37. 1806 C-4 R1 VF30. Large 6 with Stems. Five points sharper but lightly cleaned and nicely retoned glossy steel brown and chocolate. Only a few trivial marks, including a tiny spot of darker olive brown toning in the field under the tip of the hair ribbon. E-MDS, Manley state 1.0. The repunching on the 6 is sharp and the reverse is rotated 35 degrees CW. Ex Worthy Coin Co., 11/16/91:1002.



0

7. (40)

38. 1807 C-1 R1 VF35+ (PCGS AU50). Glossy chocolate brown mottled with some darker olive brown tones, including a rather large spot of similar dark toning at the T in CENT. The protected areas display attractive flowline luster. No contact marks worthy of mention. M-LDS, Manley state 3.0, the reverse rotated 5 degrees CW.



3.

12.

39. 1809 C-1 R4+ G5. A point sharper but slightly bent and the surfaces are covered with light roughness. There is a thin nick on the bust, a small rim nick at star 11, and a nick on the F in HALF. Slightly glossy chocolate brown, the protected a few shades darker than the highpoints, with the patina helping minimize the roughness below. The date and legends remain strong. MDS, Manley state 2.0.



5 4

40. 1809 C-2 R3 VF25+. Nice glossy medium brown and chocolate. Smooth and attractive, just a few trivial contact marks, including a tiny nick in the dentils right of star 9. M-LDS, Manley state 3.0, with the reverse rotated 135 degrees CW.



6. 10  
65

41. 1809 C-4 R2 VF30+. Circle inside 0. Five points sharper but there are a few very light contact marks on the obverse, including a faint hairline scratch on the cheek, another on the neck, and a third in the field before the face. Glossy chocolate and steel brown. EDS, Manley state 1.0. The circle inside the 0 (recut 0) is sharp. Ex Lyman Low-Albert Holden 9/5/1908-Norweb collection, Bowers & Merena 10/12/87:60-Gene Braig-Tom Reynolds.

42. 1809 C-6 R1 VF20. Glossy chocolate brown with steel brown highpoints. A dull rim nick at star 13 is the only notable defect. M-LDS, Manley state 5.0, the reverse rotated 135 degrees CCW.



6 6

43. 1810 C-1 R1 VF35. Glossy chocolate brown with slightly lighter brown tones in protected areas. No notable marks other than a short, very light hairline scratch just left of the date. M-LDS, the reverse rotated 30 degrees CCW. Excellent eye appeal for the grade.

44. 1810 C-1 R1 VG10. Glossy chocolate and steel brown with traces of lighter brown toning in protected areas of the obverse. A speck of greenish verdigris under ST in STATES is the only defect. The reverse is rotated 40 degrees CCW. Nice for the grade.

45. 1825 C-2 R1 VF30. Glossy medium brown and chocolate, the reverse a few shades lighter than the obverse. There is a small splash of darker olive brown toning on the ear, a faint splash of reddish chocolate toning on the bust, and a couple spots of reddish brown toning on the left side of the reverse. E-MDS, Manley state 1.0.



17.

50 60  
1500/2500

46. 1825 C-2 RI AU58. Lustrous bluish steel brown with sea-green overtones covering the reverse and traces of very faded mint color remaining on the obverse. A speck of darker olive brown toning in the field left of star 10 is the best identifying mark. Excellent eye appeal, very close to mint state. E-MDS, Manley state 1.0. Ex 2003 EAC Sale, lot 185-Steven Ellsworth 6/8/03.

6.

PF + 65 7.

49. 1826 C-1 RI MS60+. Lustrous medium brown and chocolate with traces of faded mint red in protected areas, especially on the reverse, and hints of light bluish steel overtone in the fields. The notable marks are a very light horizontal nick just right of the mouth and a small spot of slightly darker toning in the field left of star 12. LDS, Manley state 5.0. Excellent eye appeal, nearly choice.

47. 1825 C-2 RI F15+. Five points sharper with some light nicks on the obverse, including one in the field under the chin and a few others on the back of the head. Glossy chocolate and olive brown. MDS, Manley state 2.0.

48. 1825 C-2 RI F15. Sharpness VF30 but burnished and retoned glossy chocolate and bluish steel brown with faded artificial red in protected areas. There are some fine hairline scratches on the obverse. LDS, Manley state 3.0.

1.25

## The 2005 EAC Convention Sale, April 23, 2005

50. 1826 C-2 R3+ VF25 (NGC EF45BN). Sharpness VF30 with a short diagonal hairline scratch on the cheek passing just right of the eye. Otherwise nice, free of any notable defects. Rather glossy chocolate brown. EDS, Manley state 1.0.



11  
58 1.21  
51. 1826 C-2 R3+ AU50 (NGC AU58BN). Lustrous light steel brown with bluish steel toning on the highpoints and peeps of very faded mint red in a couple protected areas of the reverse. The protected areas are covered with attractive mint frost. The only marks are some very tiny nicks in the field under the bust tip. Nicely struck E-MDS, Manley state 2.0.



3 1.75  
52. 1826 C-2 R3+ VF30. Slightly sharper with some fine hairline scratches in the field right of the portrait and others inside the wreath, none notable but too many to ignore. Glossy medium brown and chocolate with a splash of slightly darker chocolate toning left of star 8. MDS, Manley state 2.0.



4 7.  
53. 1828 C-1 R1 MS60. Lustrous medium brown and chocolate with attractive bluish steel overtones in the fields and protected areas. The fields are satiny and very attractive. The only notable defects are some light nicks on the bust tip and in the field near the dentils under star 1. A small spot of reddish brown toning at the hair right of star 7 is a good identifying mark. E-MDS, Manley state 1.0.

54: 6.28  
54. 1828 C-1 R1 VF20. Sharpness VF30 but cleaned and retoned glossy chocolate and darker steel brown. Smooth surfaces, a couple small rim nicks at D-S the only notable marks. MDS, Manley state 2.0.



2.75  
55. 1828 C-1 R1 AU50+. Lustrous light brown mottled with some tiny splashes of darker olive brown toning on the obverse. There are a few tiny ticks on the bust and traces of an old fingerprint at the A in STATES. LDS, Manley state 3.0.

The 2005 EAC Convention Sale, April 23, 2005



*as described*

*L-HAC*

56. <sup>1.40</sup> 1828 C-2 R1 VF7. 12-Star Obverse. Misaligned Obverse. Glossy medium brown with chocolate toning in protected areas. Smooth and attractive for the grade. The identifying mark is a small spot of chocolate toning just right of star 3. EDS with the obverse clearly misaligned to K-4.5 while the reverse is properly centered. A clean example of a neat mint error. Ex 1992 EAC Sale, lot 77.

MINT STATE 1828 C-2 12 STAR OVERSEER



57. <sup>20</sup> 1828 C-2 R1 MS60. 12-Star Obverse. Glossy chocolate and steel brown with faded mint red covering at least 10% of both sides. There are traces of very fine crud in some of the protected areas and a short, faint hairline scratch left of the first S in STATES. Nicely struck LDS, Manley state 3.0. May benefit from a bath to remove some of the loose dirt, but the eye appeal is excellent as is.

58. 1828 C-3 R1 VF20. Glossy chocolate and olive brown with some lighter brown toning in protected areas. A pinprick in the dentils just left of the date is the notable defect. LDS, Manley state 4.0.

59. <sup>.60</sup> Pair of Half Cents, both F15. 1829 C-1 R1 M-LDS. 1834 C-1 R1 MDS. Lot of 2 coins.

60. <sup>1.25</sup> 1832 C-1 R2 EF40. Sharper by at least 5 points but lightly cleaned and retoned glossy steel brown and chocolate with lighter reddish brown toning in protected areas. Smooth and attractive in spite of the retoning, and it has the eye appeal of a choice AU example. LDS.

61. <sup>2.75</sup> 1832 C-2 R2 AU55. Frosty light bluish steel brown with satiny mint luster covering the protected areas. Excellent eye appeal, just a hint of friction on the highest points from mint state. A very tiny tick in the field off the nose tip and a faint hairline near the dentils over ED-S are the only marks. E-MDS, Manley state 1.0.

62. <sup>.65</sup> 1832 C-2 R2 VF25. Glossy medium brown and chocolate. A faint spot of darker toning at the dentils above the L in LIBERTY and a short hairline scratch over LF in HALF are the notable marks. MDS, Manley state 1.0.



*4.*

*2.75*

63. 1832 C-3 R2 AU58. Lustrous light to medium steel brown with darker steel toning on the highpoints. The barest hint of rub on the highest points from full mint state. A tiny tick in the field right of the date is the best identifying mark. MDS. Removed from a PCGS slab graded MS63BN (PCGS label included).

64. <sup>.60</sup> 1833 C-1 R1 VF20. Slightly sharper with some very faint hairline scratches, mostly on the obverse. Rather glossy chocolate and steel brown with a hint of reddish brown toning right of the T in CENT. EDS, Manley state 1.0.

65. <sup>.50</sup> 1833 C-1 R1 F12. Sharpness VF35 but very lightly corroded. There are specks of greenish verdigris on both sides, strongest around OF. No notable signs of contact. Slightly glossy reddish chocolate brown.

66. <sup>1.15</sup> 1834 C-1 R1 EF40. Glossy steel brown and chocolate with some frosty golden light brown toning in protected areas. Close to EF45 except for a single nick in the field left of star 11. EDS, Manley state 1.0.

67. <sup>1.75</sup> 1834 C-1 R1 VF30. Ten points sharper but cleaned and retoned glossy bluish steel brown and chocolate with medium brown in some of the protected areas. There are some light contact marks scattered about both sides, including a fine hairline scratch from star 4 to the upper lip. E-MDS, Manley state 1.0.

68. <sup>.90</sup> 1835 C-1 R1 VF35. Ten points sharper with fine hairlines covering both sides and a few other light contact marks, including a collection of very tiny ticks on the bust tip and others in the field over star 8. Glossy steel brown and chocolate. E-MDS, Manley state 1.0.

The 2005 EAC Convention Sale, April 23, 2005



1.15

69. 1835 C-1 R1 EF40. Double-clipped Planchet. Frosty steel brown and chocolate delicately mottled with some lighter and darker brown tones. There is an obvious planchet clip affecting the dentils at stars 5-7 and a smaller one that barely shows at star 2. Both clips affect the reverse as well. LDS, Manley state 2.0, the reverse rotated 20 degrees CW.

.75

70. 1835 C-2 R1 VF30. Sharpness AU50 but there are some sharp pinscratches at S-O and below HALF. These scratches are old and blend with the natural patina, but they certainly detract from an otherwise nice, smooth example. Glossy olive brown with some tiny specks of darker toning on the cheek and a splash of reddish brown toning at the top of the cap. MDS, Manley state 2.0.



4\*  
4/7

71. 1837 Half Cent Token Low-49 AU55. A popular half cent token from the Hard Times era, often collected as part of the Federal half cent series. This is a nice one, just a bit of very light friction on the highpoints from mint state. Glossy light to medium brown with a small wisp of darker toning at the top of the right wing and a hint of faded mint red on the reverse. A very tiny tick in the field left of the eagle's beak is a good identifying mark.

72. 1849 C-1 R2- VF35. Rotated Reverse. Five points sharper with a light diagonal hairline scratch on the cheek. Glossy chocolate and bluish steel brown. Nicely struck EDS, Manley state 1.0, with the reverse rotated 110 degrees CCW.

73. 1850 C-1 R2- VF30. Double Profile. Sharpness EF40 or slightly better but the obverse is covered with light contact marks, including a small rim nick at star 6. Glossy chocolate and steel brown with lots of golden light to medium brown in protected areas of the reverse. Early die state with sharp doubling (from die bounce) on the date, stars 1-5, the lips, nose, neck, and bust.

74. 1851 C-1 R1 VF35. Sharper by at least 5 points with too many light contact marks for the sharpness grade, including a rather long nick in the field under the chin and a small rim nick over star 6. Glossy medium brown with a small splash of chocolate toning in the field at the bottom of the bun. EDS.

75. 1853 C-1 R1 VF35+. Sharpness EF45 with some contact marks, including a fine vertical hairline scratch in the field under the chin and a fresh nick on the E in AMERICA. Glossy medium brown with frosty luster in protected areas and a swipe of dark olive toning from star 3 to star 8. EDS, Manley state 1.0.

76. 1853 C-1 R1 EF40. Nice glossy medium brown with chocolate brown toning in protected areas. There are some tiny, dull pinpricks on the cheek and a couple more in the field right of star 3. Otherwise the surfaces are choice. MDS, Manley state 1.0.

77. 1853 C-1 R1 VF30. Glossy reddish chocolate brown with lighter brown toning in protected areas of the reverse. The only marks are a tiny vertical nick on the throat and a fine hairline scratch left of the first A in AMERICA. M-LDS, Manley state 2.0.

78. 1853 C-1 R1 VF25. Double Profile. At least ten points sharper with some light contact marks scattered about both sides plus a deep nick or thin scuff on NT in CENT. Glossy medium brown and chocolate. M-LDS, Manley state 2.0. There is sharp doubling from die bounce on the date and stars 1-6.

79. 1854 C-1 R1+ VF30. Ten points sharper with some light contact marks, including a small rim bruise under the 54. Glossy medium brown and chocolate. EDS, Manley state 1.0.

80. 1854 C-1 R1+ VF35. Five points sharper with some microscopic crud dusted into the protected areas of the reverse. A few tiny ticks on the cheek and in the field above the head consistent with the grade. Glossy medium brown and chocolate, the reverse closer to matte thanks to the crud. E-MDS, Manley state 1.0.

81. 1856 C-1 R2 VF20. Clipped Planchet. Sharpness VF30 but there are several small rim nicks, strongest at stars 8 & 10 and at the top of the reverse. Glossy olive brown and chocolate. The dentils at stars 7-8 are flat thanks to a very tiny planchet clip. MDS, Manley state 2.0.

82. 1857 C-1 R2 VF25. Glossy medium brown and chocolate with traces of frosty luster in protected areas of the reverse. The best identifying mark is a small swipe of darker olive toning in the field close over the bust. MDS.

LARGE CENTS



83. 1793 S-2 R4+ VG8. Chain AMERICA. A couple points sharper but lightly cleaned and retoned glossy dark chocolate and steel brown with lighter coppery brown toning on portions of the chain. There is a light rim bruise opposite the chin, another at K-9 on the obverse, and a third small one at ER in AMERICA. The date is weak but easily readable and the legends are clear. No roughness or corrosion of any kind, and the surfaces are smooth except for very tiny contact marks scattered about both sides. Not perfect but relatively nice for the grade.

84. 1793 S-3 R3- Basal State-1. Chain AMERICA. Dark steel brown and chocolate with slightly lighter toning on the highpoints. The surfaces are covered with uniform fine porosity, but there are no contact marks or signs of verdigris. The head is weak but visible, but the date and LIBERTY are gone. The chain is clear and ONE CENT is visible, but everything else is gone. Just enough detail remains to be certain of the attribution. Not perfect, but not bad for a basal state example.



85. 1793 S-9 R2 G5. Wreath Cent. Sharpness VG10 but covered with fine to moderate corrosion, strongest on the right side of the reverse. There are traces of shallow verdigris on both sides, none notable, and a dull vertical nick on the chin. Reddish chocolate and darker olive brown. The surfaces are mostly glossy except for the right side of the reverse, which is matte. The date is clear although the 9 is weak, and the legends are complete except for the right side of the reverse where the roughness obscures nearly everything. EDS. Ex David Garvin (all proceeds to EAC).



86. 1793 S-9 R2 G5. Wreath Cent. Sharpness VG10 but lightly corroded with patches of reddish verdigris scattered about the obverse. Some of the roughness has been scraped from the face to help smooth that area. Several pitmarks show on both sides, including a small but rather deep one between the 1 & 7 in the date and some larger ones on the edge over ITED. The most notable mark is a dull rim nick or planchet chip over TY. Mostly glossy dark chocolate and steel brown with reddish chocolate toning covering the shallow verdigris. The date and legends are clear in spite of the roughness. Not as ugly as it might sound. LDS, Breen state VIII.



87. 1793 S-10 R4 VG10. Wreath Cent. Sharpness VF20 with many of the details expertly strengthened, particularly the hair and ONE CENT. The surfaces show extremely fine glossiness in protected areas while the fields were carefully smoothed to improve the eye appeal. A dozen small pitmarks are scattered about the upper half of the reverse, mostly at STATES, and there is a light rim bruise at the first A in AMERICA. Glossy dark chocolate brown with darker steel overtones on the reverse. The overall eye appeal is better than the description implies, but this cent does have issues. EDS. Ex Empire Coins 8/8/03-William Chappelow.



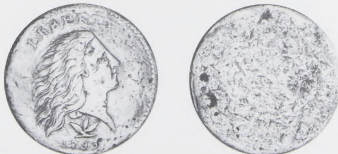




88. 1793 S-11b R4 VG7. Wreath Cent with Lettered Edge. The obverse is slightly better while the reverse is a bit weaker. Glossy chocolate brown delicately woodgrained with golden light brown on both sides. The surfaces are smooth and very attractive for the grade. The only notable marks are a small nick at the junction of the hair left of the eye, a small nick at the left top of the wreath ribbon, and a very dull nick at ER in AMERICA. The date is clear and the legends are complete except for ONE CENT, which is weak. The edge lettering is complete and bold, including the double leaf following DOLLAR. Excellent eye appeal for the grade. Ex Jim Long.



89. 1793 S-11c R3- G6. Wreath Cent with Lettered Edge. A couple points sharper with very fine roughness covering both sides. No verdigris or notable contact marks. The best identifying defect is a very fine planchet fissure from the rim to the lowest curl left of the date and at the opposing area between the T & A in STATES, as struck. The date is clear and the legends are complete, although the denominator is weak. Rather glossy chocolate and steel brown. The edge lettering is complete and bold, including the single leaf following DOLLAR. Ex David Garvin (all proceeds to EAC).



3. 90. "1793" Wreath Cent (made from a 1794). Similar to a Smith Counterfeit, but relatively crude. G4. Glossy chocolate and steel brown. The reengraved obverse is about F12 while the reverse is basal state, just traces of the design faintly visible. The engraving was done with some skill, but it pales by comparison with the famous "Smith" counterfeits. Weight 182.0 grains.

PRESENTATION COPY  
 "PROVENANCE GALLERY"  
 OF 1794  
 LARGE CENTS"  
 ALL PROCEEDS TO EAC

91. Copy #25 of 25 of Al Boka's book *Provenance Gallery of 1794 Large Cents*. The latest book featuring United States Large Cents. Hardbound deluxe limited-edition version with dust cover and slip case. Provides an overview of the formation of the United States' Monetary System and the Philadelphia Mint as well as the conditions surrounding the production of what many consider the ultimate numismatic subject: the cents of 1794. A brief history of large cent collecting and the collectors themselves, descriptions of collectible obverse and reverse designs as well as colorful photographic plates of each coin featured in the 2004 EAC Provenance Exhibit at the San Diego convention. Prologue by John W. Adams. Donated by the author (all proceeds to EAC).



92. 1794 S-18b R4 VG8. Head of 1793. A couple points sharper with extremely fine roughness covering the fields and protected areas. No verdigris, and the roughness is mostly hidden under a glossy dark chocolate and steel brown patina. The only marks are a tiny pit in the field off the chin, another above the tip of the pole, a very light rim bruise at the O in OF, and a small rim nick under the right side of the fraction. The date is weak but easily readable, and the legends are complete. Not bad for a Head of 1793. Ex Sheraton Collection-Admiral Bitler 94/2-David Garvin (all proceeds to EAC).

NEWLY DISCOVERED 1794 S-19a



93. 1794 S-19a R5+ F15. Head of 1793. Edge Device of 1793 (leaf down). Sharpness VF20 but cleaned and retoned glossy light brown and chocolate with darker steel brown toning on the highpoints. The planchet is mostly smooth and attractive, especially for a Head of 1793, but there are some tiny planchet chips or striations on the reverse, the largest group of these at NT in UNITED. In addition, there are a few light contact marks, including a small rim bruise opposite the chin, a pinpoint in the center of the cap, and a very light rim bruise at the T in UNITED. The date and legends are clear, and the edge lettering is strong and complete, including the upside-down leaf following DOLLAR. A new discovery of this very rare variety, and one of the finest known.



94. 1794 S-28 R2+ F12. Slightly sharper with a few light contact marks, including a short diagonal hairline scratch over the 9 in the date and a light rim bruise at the I in AMERICA. Glossy chocolate brown with a large spot of lighter brown toning at S-O. The surfaces are smooth and highly glossy thanks to a light coat of wax. Ex Admiral Bitler 94/11-David Garvin (**all proceeds to EAC**).

95. 1794 S-28 R2+ VG7. The obverse is a few points better while the reverse is a bit weaker. Glossy medium brown with reddish chocolate toning in the protected areas. A thin nick on the cheek, some light contact marks in the wreath under ED in UNITED, and a very light rim bruise at S-O are the only notable marks on otherwise smooth surfaces. The date is clear and the legends are readable, although some of the reverse legend is weak.



96. 1794 S-31 R1 VG10. Sharpness VF30 with light corrosion under a glossy dark olive brown patina. No distracting verdigris, but there are several notable contact marks, including a strong rim nick just above the tip of the pole, another left of the fraction, and a third at the F in OF, plus a scuff at NE in ONE. The date is bold and the legends are complete. Ex David Garvin (**all proceeds to EAC**).



97. 1794 S-32 R2+ G5. A couple points sharper with a patch of fine corrosion at the base of the cap into the field below, another smaller one at BER in LIBERTY, plus very fine roughness covering most of the planchet. The surfaces have been lightly burnished to minimize the roughness, and the highpoints of the obverse are covered with faint hairline scratches. Glossy dark chocolate and steel brown with lighter brown toning covering the highpoints. The date is clear and legends complete except for IBERTY, which is gone. Very rare EDS, Green state I, before any die cracks. Ex David Garvin (**all proceeds to EAC**).



98. 1794 S-32 R2+ VG10. Rotated Reverse. Sharpness VF20 with a half dozen light to moderate rim bruises on both sides. The strongest on the obverse is over LI while the most notable on the reverse is under the left end of the fraction. Nice glossy medium brown and chocolate. The date and legends are strong. M-LDS, Breen state IV. The reverse is rotated 45 degrees CCW. Ex David Garvin (all proceeds to EAC).

99. 1794 S-36 R5 AG3. A couple points sharper but covered with uniform moderate granularity. No verdigris or pitmarks. The only marks are a few light rim bruises on each side, notably at the top of the cap, at D-S, and at S-O. Matte chocolate and darker steel brown. The date is weak but readable and most of the legends are clear. Ex David Garvin (all proceeds to EAC).



100. 1794 S-38 R5+ VG8. Rather glossy reddish olive brown with lighter golden brown toning covering the highpoints, the two-tone appearance accenting the details and enhancing the eye appeal. The surfaces appear smooth but do show microscopic roughness under the patina. No verdigris or pitting. The only marks of any consequence are a light rim bruise right of the Y in LIBERTY and another at the second A in AMERICA. The date and legends are complete and easily readable. Ex Paramount International Coin Corp., 8/67:150-unknown-Denis Loring 6/78-David Garvin (all proceeds to EAC).

101. 1794 S-43 R2+ G4. The obverse is slightly better while the reverse is a bit weaker. Glossy dark chocolate brown. Smooth surfaces, free of any hint of corrosion or verdigris. A dull horizontal nick or planchet chip in the field under the cap and a small rim nick at TE in STATES are the notable marks. The date is strong. LIBERTY is weak but readable, and about half the reverse legend is still visible. Ex David Garvin (all proceeds to EAC).

102. 1794 S-44 R1 AG3+. The obverse is slightly better, the reverse weaker. Glossy chocolate and steel brown, possibly cleaned and retoned long ago. The surfaces are smooth except for obvious roughness under the bust tip and several patches on the upper right quadrant of the reverse. No verdigris. A vertical nick in the hair under E in LIBERTY is the notable contact mark. The date and LIBERTY are clear while about half the reverse legend remains visible. Ex David Garvin (all proceeds to EAC).



103. 1794 S-47 R4 VG10. Five points sharper but covered with very fine roughness under a mostly glossy dark chocolate brown patina. No verdigris or marks other than a tiny pit just right of the D in UNITED. The 4 in the date is weakly struck, as are BERTY, but they are still readable. Everything else is strong. Ex David Garvin (all proceeds to EAC).



104. 1794 S-49 R2 VG7. Very slightly sharper but there is a rim dent at ICA. Some light nicks are scattered about both sides, none notable. Glossy chocolate brown with lighter steel brown toning covering the highpoints. The date is clear and legends are complete except for OF, which is gone. EDS.



105. 1794 S-49 R2 G6. Sharpness F12 with fine granularity covering the planchet and a half dozen rim dents on each side. Slightly glossy chocolate and darker olive brown. The most notable marks are a pair of small rim dents under 794, two larger ones at ERT, and another just above the tip of the pole. The date is clear and the legends are complete, although the tops of OF AMERIC are worn into the rim. M-LDS, Breen state II late. The die crack through E in LIBERTY is strong. Ex David Garvin (all proceeds to EAC).

106. 1794 S-55 R2 G4+. A point or two sharper with a couple dozen small pitmarks or nicks scattered about the obverse and a dull rim dent left of the lower curls. No verdigris. Glossy medium brown with reddish chocolate brown toning in protected areas. The date is easily readable and most of the legend is clear.



107. 1794 S-56 R3 VG8. Office Boy Reverse. Sharpness VF20 but covered with uniform moderate granularity. There is a small spot of verdigris in the curls left of the shoulder, a light rim bruise at RT in LIBERTY, and fine hairline scratches at TES-OF-A. Medium brown and chocolate with some dark olive gloss in protected areas of the reverse. The highpoints display some toning but the rest of the planchet is matte. The date and legends are clear. Ex David Garvin (all proceeds to EAC).

108. 1794 S-57 R1 G6. Sharpness F12 but covered with light corrosion under a mostly glossy dark steel brown patina. There is reddish brown toning in protected areas. The notable mark is a dull but rather strong rim nick left of the bottom of the cap. The date is clear and the legends are nearly complete, OF the only part that's gone. Ex David Garvin (all proceeds to EAC).

109. 1794 S-57 R1 AG3+. Blundered Edge. The obverse is very slightly better, the reverse weaker. Mostly glossy chocolate and steel brown with splashes of reddish brown toning on both sides. There are patches of fine porosity on the obverse, strongest in the hair under the ear. The notable contact marks are a small rim bruise at the tip of the bust and several small rim nicks at STATES. The date is clear, LIBERTY is readable, and at least half the reverse legend can be made out with some effort. The edge is blundered reading ONE HUNDRED A DOLLAR. Ex David Garvin (all proceeds to EAC).

110. 1794 S-59 R3- VG8. Sharpness F15 but covered with uniform fine granularity. Matte dark steel. No verdigris, and the only mark is a nick in the dentils right of the chin. The date and legends are clear. MDS. Ex David Garvin (all proceeds to EAC).

111. 1794 S-59 R3- G4. Sharpness VG8 but covered with moderate corrosion. No notable verdigris, and the only marks of any consequence are three dull nicks in the hair left of the jaw. Dark olive brown and steel. The date and legends are complete. MDS.



112. 1794 S-59 R3- VG8. A couple points sharper with four small pinpricks on the obverse, including one on the nose, another on the lower lip, a third on the neck close under the earlobe, and one on the cap. A tiny rim bruise at the second T in STATES is the only other mark. Glossy steel brown and reddish chocolate. The date and legends are all clear. M-LDS, Breen state IV. The arc die crack through the fraction is clear.



113. 1794 S-61 R4 VG10+. Sharpness near VF20 with a moderately sized pitmark near the dentils below the cap. The remainder of the planchet shows microscopic roughness under a rather glossy dark chocolate brown patina, the highpoints a lighter shade of chocolate. No additional defects. The date and legends are clear. Ex Tom Morley auction 12/20/76-Gordon Wrubel-David Garvin (all proceeds to EAC).

114. 1794 S-61 R4 G4. The obverse is a few points better while the reverse is weaker. Glossy medium brown and chocolate. Only trivial contact marks and no roughness. The date and LIBERTY are easily readable but most of the legend outside the wreath is worn smooth.



115. 1794 S-63 R3- VG8+. Rotated Reverse. The obverse is a bit better and the reverse is slightly weaker, the grade an average of the two. Glossy medium brown with darker chocolate toning in protected areas, the two-tone appearance accenting the details. The only notable marks are a tiny pinprick at the dentils under the 4 and a light scuff on the rim above the R in LIBERTY. The surfaces are attractive and mostly smooth, but there is extremely fine roughness under the glossy patina. Still the eye appeal is excellent for the grade. The reverse is rotated 30 degrees CW. Ex David Garvin (all proceeds to EAC).



116. 1794 S-65 R1 VG7. Sharpness VF35 but covered with moderate porosity. No contact marks, but there are traces of shallow verdigris on both sides. Slightly glossy dark olive and steel. Scudzy, but the date and legends remain clear. M-LDS.

117. 1794 S-65 R1 VG8 (Hallmark slabbed VG8). Glossy chocolate and steel brown. Smooth and problem-free, just worn. The date is strong and most of the legends are clear, the only weakness a result of the bisecting reverse die crack. LDS.



118. 1794 S-67 R3 VG8. A couple points sharper but cleaned and retoned a mostly glossy chocolate and steel brown. The surfaces are free of corrosion, and the only defects are some light contact marks, including a thin diagonal nick on the cheek and a couple small rim nicks over the R in LIBERTY.

119. 1794 S-69 R3 G5. The obverse is VG8 while the reverse is AG3. Glossy dark steel brown and chocolate. The surfaces are smooth, perhaps lightly burnished long ago. The only marks are a pinprick on the rim left of the lower curls, a dull rim nick just left of the date, and an old dig at the top of the reverse. The date and LIBERTY are bold, but only two-thirds of the reverse legend remains visible.



120. 1794 S-70 R2-VG8. Sharpness F12 but lightly corroded, and there is some shallow verdigris in the right obverse field and on the top of the fraction. The only notable contact marks are a dull rim nick over the E in LIBERTY and a fine vertical hairline scratch in the hair. Slightly glossy medium brown and chocolate with darker chocolate toning in protected areas. The date and legends are all bold. LDS. Ex David Garvin (all proceeds to EAC).

121. 1794 S-72 R2 G5. Head of 1795. A couple points sharper with a patch of fine roughness on the cap into the field below and a few light contact marks, including a couple light hairline scratches in the field before the face and a shallow rim bruise under the 94. Cleaned and retoned a glossy chocolate and dark steel brown. The date is strong and the legends are clear except for a couple areas on the reverse, which are weak but readable. LDS. Ex David Garvin (all proceeds to EAC).

122. Pair of Early Cents. 1794 S-31 R1 AG3. Sharpness VG10 but corroded. The date is clear and legends readable. 1796 Liberty Cap type, possibly S-83, Basal State-1. The date is faint but readable.

123. 1795 S-73 R5- G4. Lettered Edge. Sharpness VG8 but uniformly granular and cleaned. No verdigris, and the only marks are a very light rim bruise under the 7 and a scuff on the rim right of the fraction. The date is strong and the legends are clear. Coppery steel brown and chocolate. Ex David Garvin (all proceeds to EAC).

124. 1795 S-75 R3 G4. Lettered Edge. Sharpness VG8 but lightly corroded with patches of fine porosity on the obverse. A couple light rim bruises at the bottom of the obverse, otherwise free of notable marks. Slightly glossy dark chocolate and steel brown.

SPECTACULAR FLIPOVER TRIPLE STRIKE  
1795 S-76B



55

125. 1795 S-76b R1 VF20. Plain Edge. Flipover Triple Strike. Slightly sharper but the edge has been smoothed all around. This defect is not visible from either side and is easy to miss. Glossy medium brown and chocolate, the obverse delicately woodgrained. The surfaces are smooth and the eye appeal is excellent. Struck at least 3 times. The first two strikes were nearly centered on the planchet but were offset by a 5-10 degree rotation between the strikes. The planchet was then flipped over and struck again very slightly off center but with all the design on the planchet. Strong evidence of the first two strikes shows on the right side of the obverse and reverse. Two caps are boldly impressed over MER on the reverse, and these offer the clearest evidence of at least two strikes prior to the flipover. A spectacular multiple mint error.

## The 2005 EAC Convention Sale, April 23, 2005

**126. Trio of 1795 & 1796 Cents.** 1795 S-74 or S-75 with Lettered Edge Fair-2. Strong date but reverse is slick. 1795 S-76b R1 G4. Plain Edge. Date is easily readable but the reverse is weaker than the obverse, as usual. 1796 S-89 R3+ AG3. Liberty Cap. Sharpness VG10 but corroded and bent. Date and legends clear. Lot of 3 coins. All are ex David Garvin (**all proceeds to EAC**).

**127. 1795 S-76b R1 G6. Plain Edge.** Clipped Planchet. Sharpness VG10 with light corrosion covering the fields and protected areas. The highpoints are smooth from wear following the corrosion, and there is no verdigris. Rather glossy dark chocolate with medium brown highpoints. The only mark is a small rim nick under the cap. A small, curved planchet clip affects the dentils right of the Y in LIBERTY and over ER in AMERICA. The date is strong and the legends are clear. EDS.

**128. 1795 S-76b R1 G4. Plain Edge.** Several points sharper with patches of light corrosion and verdigris on both sides, strongest at ST in STATES. Rather glossy dark chocolate and olive brown with steel brown highpoints. The date and legends remain readable. EDS. Ex David Garvin (**all proceeds to EAC**).

**129. 1795 S-76b R1 G6. Plain Edge.** A couple points sharper with fine granularity covering both sides. No verdigris, and there are some fine hairline scratches on the forehead and a light rim bruise at UN1. Slightly glossy medium brown, possibly recolored. MDS. The date is strong and the legends are clear.

**130. 1795 S-76b R1 G5. Plain Edge.** Sharpness F12 with several strong nicks or dull dents, mostly on the reverse. The most notable mark is a large planchet chip at the dentils under the cap. No corrosion or verdigris. Slightly glossy chocolate brown. The date is strong and the legends are clear. MDS.

**131. 1795 S-76b R1 VG7. Plain Edge.** Sharpness F12 with very fine granularity covering the planchet. There are specks of dark verdigris on both sides plus a couple minor contact marks, including a rim nick right of the bust tip. Slightly glossy chocolate mottled with dark olive brown, the obverse darker than the reverse. M-LDS. The date and LIBERTY are clear, but a few places on the reverse are weak thanks to the swelling associated with the later die state. M-LDS. Ex Clinton Hollins-David Garvin (**all proceeds to EAC**).



**132. 1795 S-78 R1 VG10. Oversize 30mm Planchet.** A couple points sharper with extremely fine roughness mostly hidden under a glossy dark chocolate patina, the highpoints a lighter shade of brown. No verdigris, and the only mark of any consequence is a tiny rim nick left of the cap. MDS. The date is bold and the legends are clear. The planchet is oversize (30mm versus the normal 20mm), a condition I've seen on a few examples of this variety. Reason unknown to me, but neat nonetheless. Ex David Garvin (**all proceeds to EAC**).

**133. 1795 S-78 R1 G6. Clipped Planchet.** Sharpness VG10 with fine to moderate porosity covering much of each side. No verdigris. Slightly glossy dark chocolate brown with medium chocolate toning on the highpoints. The only marks are a thin planchet cutter arc through ERT in LIBERTY and a short hairline scratch in the field above the bust tip. LDS. There is an arc clip in the planchet affecting the dentils over RTY and right of the fraction.

**134. 1795 S-78 R1 G5+.** A point or two sharper with a few contact marks, including some fine hairline scratches in the hair left of the face, a rim bruise under the 9, another at the bust tip, and a light scuff at the bottom of the reverse. Glossy olive and dark steel brown. The date is bold and the legends are nearly complete.



**135. 1796 S-84 R3 VG8+.** Sharpness F12 with fine granularity covering the fields and protected areas. Nicely recolored a mostly glossy medium brown. No verdigris, and the only marks are a couple tiny rim nicks at LI in LIBERTY. The date and legends are bold. Rather nice eye appeal in spite of the problems. Ex Dr. French-Barney Bluestone-Dorothy Paschal-Admiral Bitler 96/4-Denis Loring 6/78-David Garvin (**all proceeds to EAC**).

**136. 1796 S-85 R5- AG3.** Sharpness VG10 but heavily corroded. No verdigris or significant marks. Slightly glossy very dark steel, nearly black. The date is readable and the legends are complete. Ex David Garvin (**all proceeds to EAC**).



**137. 1796 S-86 R5 F12.** Sharpness VF25 but covered with very fine roughness, strongest at LI in LIBERTY and on the right side of the reverse. No verdigris, and the only marks are a tiny rim nick just left of the date and another right of the fraction. Dark olive and steel. Called VF25 net F12 by Noyes and tied for CC#9 in his census (photo #36158). Bland also says VF25 net F12+.

**138. 1796 S-87 R3- G6.** Sharpness VG10 but the reverse is covered with light to moderate corrosion. The obverse is mostly smooth and attractive, just a hint of very light roughness in the field behind the portrait. Chocolate brown, the obverse glossy and the reverse only slightly so. The only marks are a tiny rim nick on each side of the date. The date and legends are clear, although the bottom of the 6 is weak due to the usual swelling in that area. Ex David Garvin (**all proceeds to EAC**).

*The 2005 EAC Convention Sale, April 23, 2005*

**139. Group of Four Early Cents.** 1796 S-87 R3- AG3+. 1802 S-233 R2 G4. 1806 S-270 R1 G5. 1807 S-276 R1 G4. Large Fraction with upset reverse. The first two are slightly sharper with minor defects. All have a clear date. Lot of 4 coins.



**140. 1796 S-89 R3+ VG10.** Sharpness VF30 with patches of fine to moderate roughness, mostly on the obverse. Most of the planchet is smooth, but the rough patches certainly detract from the eye appeal of an otherwise sharp cent. Mostly glossy dark chocolate brown with splashes of reddish brown toning on both sides. The date and legends are bold. Ex David Garvin (all proceeds to EAC).

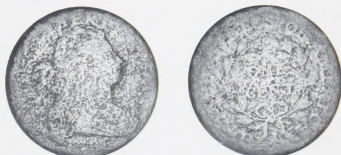
**141. 1796 S-90 R5+ Fair-2.** The obverse is slightly better while the reverse is weaker. Glossy steel brown and chocolate. Smooth surfaces and only a few contact marks, including some dull nicks in the field under the chin. The 796 is visible, as is nearly all of LIBERTY, but only 10-20% of the reverse remains. The reverse is upset, as often seen on this variety. Ex Superior 2/18/01:2166-2001 EAC Sale, lot 188.



**142. 1796 S-91 R3 VG7.** Sharpness VG10 with microscopic roughness under a slightly glossy dark olive and steel patina. No verdigris or contact marks. The date and legends are clear. Ex David Garvin (all proceeds to EAC).



**143. 1796 S-92 R3+ VG7.** Draped Bust. Clipped Planchet. Very slightly sharper but "96" is faintly scratched into the field before the chin. Otherwise the planchet is smooth and shows only a few minor marks, including a shallow planchet flake in the field before the mouth and a small nick under the O in ONE. A curved planchet clip affects the rim over the bust tip and at AM, as struck. The bottom of the date fades into the rim below, but the legends are complete.



**144. 1796 S-94 R5+ AG3.** Draped Bust. A point or two sharper with fine to moderate porosity covering both sides. No verdigris or marks. Chocolate and olive brown. The date is weak but easily readable, as is most of the legend.



**145. 1796 S-95 R5+ AG3.** Draped Bust. The obverse is glossy reddish chocolate brown while the reverse is a mix of dark olive brown and reddish chocolate with some light greenish verdigris along the bottom. A dull punchmark in the field over the bust is the significant mark. The obverse is smooth and rather attractive for the grade while the reverse is ugly. The date is mostly clear although the bottoms of the digits fade into the rim below, and the majority of the legends remain easily visible. The 3-leaf clusters are easy to see.

**146. 1796 S-100 R5+ AG3+.** Draped Bust. The obverse is very slightly better while the reverse is an equal amount weaker. Slightly glossy steel brown and chocolate with microscopic roughness covering the fields and protected areas. No verdigris or marks. The date is complete although not strong, and most of the legends remain visible. Ex Superior 2/18/02:1167.

**147. 1796 S-107 R5+ Fair-2+.** Draped Bust. Slightly glossy dark steel brown with lighter brown toning on the highpoints. There is extremely fine roughness under the patina, but no verdigris or notable signs of contact. The date is faint but readable, LIBERTY is relatively clear, and half the reverse remains easily readable. Just well worn. EDS.



148. 1796 S-107 R5+ G4. Draped Bust. Slightly sharper with a spot of greenish verdigris on the throat and traces of very light roughness under a glossy chocolate and dark steel brown patina. There are a few fine hairline scratches in the field before the portrait and a dull rim nick over the E in LIBERTY. The date is easily readable although the bottoms of the digits fade into the rim below. LIBERTY and most of the reverse legends are clear, the only weakness at the upper left of the reverse thanks to the usual horizontal die misalignment seen on this rare variety. Extremely rare LDS with a strong cud break at Y, one of only 6 known with the cud and the best of those is only VG8.



154. 1797 S-120b R2 F12. Grippled Edge. Sharpness VF20 with uniform very fine granularity under a glossy dark and olive patina. No verdigris. The only marks are a light rim bruise at the bust tip and another over the E in LIBERTY. The gripmarks on the edge are clear. Ex David Garvin (all proceeds to EAC).



149. 1796 S-108 R5 VG7. Draped Bust. The obverse sharpness is VF20 but there are some tiny pits scattered about that side and some light corrosion at the B in LIBERTY. A nick on the 7 is the notable contact mark. The reverse is weaker and is covered with light to moderate corrosion plus specks of greenish verdigris. The date and LIBERTY are strong and the reverse legend is readable although relatively weak. Chocolate and steel brown, the obverse rather glossy. Ex David Garvin (all proceeds to EAC).



155. 1797 S-124 R5+ G5+. A few points sharper with very fine roughness under a mostly glossy dark chocolate and olive brown patina. No verdigris, a thin nick on the bust and a couple fine vertical hairline scratches down the middle of the reverse are the only notable marks. LDS with strong swelling at the bust tip that obliterates the 97. Otherwise the date and legends are clear.

156. Trio of 1797 Cents. S-126 R3 AG3. EDS. S-134 R4 AG3. S-138 R1 Fair-2. Some are sharper with defects but all have a clear date. Lot of 3 coins.

150. 1796 S-108 R5 G4. Draped Bust. Glossy chocolate and steel brown. A dull rim nick right of the face and a few microscopic pitmarks scattered about the reverse are the only defects. The date is easily readable although the 1 is a bit weak, and the legends are nearly complete, although some areas are faint.

151. 1796 S-114 R5 AG3. Draped Bust. Glossy chocolate brown, probably retoned but nicely done. Smooth with only a few trivial contact marks. The date is easily readable but not strong and most of the legend remains visible. EDS. Ex David Garvin (all proceeds to EAC).

152. 1796 S-118 R5+ Basal State-1. Significantly sharper details but heavily corroded. Much of the corrosion caused the raised areas to erode more rapidly than the surrounding fields so they now appear incuse. The date and legends are clear, but appear incuse, which can play games with your eyeballs. Glossy very dark olive brown.

153. Group of four 1797 Cents. S-120a R3 AG3. Plain Edge. S-121b R3- AG3. Grippled Edge. S-139 R1 G4. LDS. S-141 R4- AG3. All are sharper with defects but have a readable date. Lot of 4 coins. Ex David Garvin (all proceeds to EAC).



157. 1797 S-128 R3- VF20. M over E. Five points sharper with extremely fine roughness hidden under a mostly glossy dark chocolate and steel brown patina. No verdigris or marks. E-MS, Breen state II. The M over E error is clear. Ex Tom Reynolds 7/30/92.

158. 1797 S-131 R2+ VG10. Stemless Wreath. Sharpness VF30 with uniform moderate granularity covering the obverse, uniform fine granularity covering the reverse. No verdigris. The only marks are a light rim bruise under the bust tip, a diagonal nick on the cheek, and a dull nick under the left side of the E in AMERICA. Slightly glossy dark steel brown. LDS. Sharp details but rather scudzy. Ex 1977 EAC Sale, lot 31-David Garvin (all proceeds to EAC).



159. 1797 S-131 R2+ G6. Stemless Wreath. Sharpness VF25 but covered with uniform moderate to strong granularity. No notable signs of verdigris, and the only mark is a dull rim nick at the T in LIBERTY. Dull dark olive. The date and details remain clear, but this cent is scudzy. MDS. Ex David Garvin (all proceeds to EAC).

160. 1797 S-133 R5 AG3. Stemless Wreath. Sharpness VG7 but moderately corroded, and there are specks of greenish verdigris on both sides, mostly on the obverse rim. A small rim bruise opposite the nose is the only contact mark. Lightly glossy dark steel. The date and legends are easily readable, and the stemless feature is visible although not strong. Ex David Garvin (all proceeds to EAC).



161. 1797 S-134 R4 VF20. Ten points sharper with extremely faint roughness covering the fields, strongest on the reverse. No verdigris. The only marks are a planchet chip in the field near the dentils under the hair ribbon and some microscopic pitmarks at the fraction and U in UNITED. Rather glossy steel and olive brown. The date is bold and the legends are clear except for STA, which was not struck up properly. M-LDS, Breen state IV. Ex R. S. Brown, Jr.

162. 1797 S-140 R1 VG10. Sharpness VF35 but lightly corroded, strongest on the reverse. The obverse is glossy reddish steel brown and chocolate with just a few areas of notable verdigris. The reverse is dull and granular with some shallow verdigris in protected areas. No significant contact marks. The date and legends remains bold. Great detail but rather scudzy. Ex David Garvin (all proceeds to EAC).

163. 1797 S-140 R1 G5. Glossy chocolate and steel brown. Smooth, a struck-through line or scratch between the I & B in LIBERTY to the head is the only mark. Very late die state with heavy swelling on both sides and a strong die crack from the rim to the lower curls, apparently a new terminal die state later than anything in the Breen book.



164. 1797 S-142 R5+ F12. Very slightly sharper with a few too many light contact marks to justify a higher grade. The only notable one is a rim bruise at the first S in STATES. Nice glossy medium brown and chocolate. The planchet is smooth, completely free of any corrosion or flaws. EDS, Breen state I. Clearly superior to the Rasmusen coin (Heritage 1/05:3166). In the middle of the condition census for this rare variety. Ex David Garvin (all proceeds to EAC).



165. 1797 NC-3 R6- AG3. A couple points sharper but both sides show scattered pitmarks and contact marks. No verdigris. Rather glossy chocolate brown, but the attractive color belies myriad light contact marks, including hairline scratches and light scrapes on both sides. The date is clear and most of the legend remains visible, although much of it is weak. M-LDS, Breen state II, with a strong die crack at TES outlining where a cud is about to form. Far from perfect, but this is an extremely rare die state of a very rare variety. Ex Henry T. Hettger.



166. 1798 S-147 R5 VG7. Style I Hair with Large 8. Very slightly sharper but there are some extremely faint pin scratches in the obverse fields, but you need a strong glass to see them. Otherwise just some light contact marks, including a small rim bruise left of the hair ribbons. Glossy chocolate brown. The date is bold and the legends are clear. Ex Denis Loring-David Garvin (all proceeds to EAC).

167. 1798 S-147 R5 AG3. Style I Hair with Large 8. Sharpness VG10 but covered with moderate granularity, the reverse rougher than the obverse. There are traces of greenish verdigris on both sides and some dull rim nicks on the right side of the obverse. Dark olive and steel. The date is strong but portions of the reverse legend are missing.

168. Trio of 1798 Cents. S-148 R2 G5. Style I Hair with Large 8. LDS with a large cud break at ERTY. S-184 R2- VG7. Style II Hair with Small 8. S-186 R2 Fair-2. Style II Hair with Small 8. The second is sharper with minor defects. Lot of 3 coins. Ex David Garvin (all proceeds to EAC).



169. 1798 S-149 R5+ G4. Style I Hair with Large 8. Sharpness VG8 or slightly better but covered with fine porosity. No verdigris, a few tiny rim nicks opposite the mouth the only notable marks. Matte steel brown. EDS, Breen state I. The date and legends are clear.



170. 1798/7 S-151 R3+ VG8. Overdate 8 over 7. Style I Hair. Sharpness F12 with fine hairline scratches and dull rim nicks scattered about both sides. The surfaces are relatively smooth and the eye appeal is decent for the grade in spite of the minor marks, but there are too many of them to ignore. Attractive glossy chocolate brown. The best identifying marks are a rim bruise just left of the fraction and a dull rim nick at the first S in STATES. LDS, Breen state VIII. The date and overdate are bold and the legends are all strong.

171. 1798/7 S-152 R2+ VG7. Overdate 8 over 7. Style I Hair with Large 8. Several points sharper with fine roughness covering the planchet, strongest in the field above the bust. No verdigris, a long nick on the bust and a tiny rim bruise at the D in UNITED are the notable marks. MDS. The date and legends are clear, and the overdate is obvious. Ex David Garvin (all proceeds to EAC).

172. 1798 S-153 R3 G6. Style I Hair with Large 8. Sharpness F15 with uniform fine to moderate granularity covering the planchet. There are traces of greenish verdigris in some of the protected areas and a tiny rim bruise under the 9. Rather glossy dark olive and steel. The date and legends are strong. EDS. Ex David Garvin (all proceeds to EAC).

173. 1798 S-157 R2 G6. Style I Hair with Small 8. Very slightly sharper with a few contact marks, including a pinscratch from the mouth to the right at right and a small nick on the right end of the fraction bar. Rather glossy steel brown and chocolate. LDS. The date is bold and the legends are clear.



174. 1798 S-161 R2- VF25+. Style I Hair with Small 8. Slightly sharper with some very tiny contact marks scattered about the obverse, mostly on the neck, but none of these is at all distracting or notable. Glossy medium brown and chocolate with wisps of darker olive toning on the lower half of the reverse and some frosty lighter brown toning in protected areas. MDS, Breen state V. Excellent eye appeal in spite of the trivial defects. Ex Don Valenziano 4/93.

175. 1798 S-161 R2- G5. Style I Hair with Small 8. Glossy medium brown and chocolate. No defects and nice eye appeal for the grade. LDS with cud breaks at TATES with a clear void in the cud over the A, Breen state IX.

176. 1798 S-163 R4- G5. Style I Hair with Small 8. A couple points sharper with a patch of shallow corrosion at TY, a smaller one at the dentils left of the hair ribbon, and a spot of corrosion above the E in CENT. Otherwise the planchet is mostly smooth with some minor contact marks, including a light rim bruise under the bust tip and another over AT in STATES. Slightly glossy medium brown and chocolate mottled with some darker olive brown tones on the reverse. EDS.



177. 1798 S-163 R4- VG8. Style I Hair with Small 8. Sharpness F12 with patches of very fine roughness in the fields and some dark crud caked into protected areas at NITED STA and the wreath below. Lightly cleaned and retoned a rather glossy steel brown and chocolate. The date is bold and the legends are strong. E-MDS, Breen state III. Ex Clay Everhart.



178. 1798 S-166 R1 VF20. Style II Hair with Large 8. Rotated Reverse. Sharpness VF35 with a small rim bruise under the 9, a patch of greenish verdigris under the M, and a scuff in the leaves below that letter. There are additional specks of very fine verdigris at D-S and around the E in STATES, possibly removable. Mostly glossy chocolate brown, the obverse eye appeal significantly nicer than the reverse. LDS with the reverse rotated 30 degrees CCW. Ex David Garvin (all proceeds to EAC).

179. 1798 S-166 R1 VG8. Style II Hair with Large 8. Rotated Reverse. A couple points sharper with microscopic roughness under a glossy dark chocolate brown patina. Just some minor contact marks, including a fine hairline scratch arcing across the shoulder. LDS, the reverse rotated 40 degrees CCW. Ex David Garvin (all proceeds to EAC).

180. 1798 S-166 R1 G6. Style II Hair with Large 8. Rotated Reverse. Sharpness VF20 but bent and covered with fine porosity. No verdigris. There are a couple dull rim dents at the bottom of the reverse associated with the action that caused the bend in the planchet, plus a few other minor contact marks. Dark steel brown. LDS with the reverse rotated 30 degrees CCW.

181. 1798 S-167 R1 VG7. Style II Hair with Large 8. A few points sharper with uniform very fine roughness under a slightly glossy olive and steel brown patina. There are traces of very shallow verdigris in protected areas of the reverse, a small rim nick left of the date, and a diagonal nick in the hair left of the earlobe. The date and legends are clear. EDS. Ex David Garvin (all proceeds to EAC).



182. 1798 S-167 R1 F15. Style II Hair with Large 8. Sharpness VF20 or a bit better with a strong rim nick under the fraction. The surfaces are mostly smooth but do show some microscopic roughness under the glossy dark olive and steel brown patina. E-MDS. Breen state II, the reverse rotated 15 degrees CCW.



183. 1798 S-167 R1 VG10+. Style II Hair with Large 8. Slightly sharper with a rim bruise opposite the chin and some minor roughness on the portrait around the ear. Rather glossy chocolate and steel brown. E-MDS. The date and legends are strong.



184. 1798 Probably S-169 G4. Style II Hair with Small 8. Counterstamped SB. Glossy dark olive brown with lighter steel brown toning on the highpoints. The date and legends are readable except for ONE CENT, which was flattened by the obverse counterstamp. The stamp is in large, raised letters inside an incuse rectangle. Looks like an old one. The Brunk book is no help.



185. 1798 S-170 R3 VF20. Style II Hair with Small 8. Rotated Reverse. Five points sharper with traces of extremely fine roughness under a mostly glossy olive and dark steel brown patina. The only verdigris is a very light dusting of reddish brown carbon in the center of the reverse. The surfaces appear satiny and are free of any contact marks. EDS with the reverse rotated 30 degrees CCW. Ex Mid-American Rare Coin Auctions 9/8/90:227.

186. 1798 S-172 R2+ VG7. Style II Hair with Small 8. Sharpness F12 but covered with fine porosity, strongest in the field left of the hair ribbon and at AT in STATES. No verdigris or notable signs of contact. Rather glossy dark olive and steel. The date and legends remain strong. E-MDS. Ex David Garvin (all proceeds to EAC).



187. 1798 S-173 R3-VF30. Style II Hair with Small 8. The obverse is glossy medium brown and chocolate mottled with splashes of olive brown. The reverse is glossy dark chocolate brown. The planchet is smooth and the only mark is a small, light rim bruise well above the bust tip. MDS, Breen state V, with a strong cud break at RTY.

188. 1798 S-173 R3- VG7. Style II Hair with Small 8. A few points sharper with uniform very fine granularity covering both sides. No verdigris or marks. Slightly glossy dark olive and steel. The date and legends are clear. Ex David Garvin (all proceeds to EAC).



190. 1798 S-177 R5- G5. Style II Hair with Small 8. Off Center. Very slightly sharper with some contact marks, including a couple sharp scratches in the field over the bust, a small punchmark on the throat, and another small punchmark in the wreath under the A in STATES. Mostly glossy chocolate and medium brown with reddish brown toning in some of the protected areas. EDS, Breen state I. Struck 10% off center to K-10.5. The date is strong. A neat, low-grade mint error. Ex R. S. Brown, Jr. 3/89-John D. Wright.

191. 1798 S-182 R4 VG7. Style II Hair with Small 8. A few points sharper with very fine porosity covering most of the planchet. No verdigris or contact marks. Slightly glossy dark steel. The date and legends are clear, although they are not strong.

192. 1798 S-183 R5+ AG3. Style II Hair with Small 8. Sharpness G6 but covered with fine porosity. No verdigris, but there are some dull, light hairline scratches on both sides, including a couple diagonal ones in the lower curls. Cleaned, now retoned slightly glossy bluish steel brown. The date is easily readable but not strong, and the legends are complete. Ex 2001 EAC Sale, lot 240.

193. 1798 S-184 R2- G6. Style II Hair with Small 8. Very slightly sharper but lightly cleaned, now nicely retoned glossy medium brown and chocolate. The only notable marks are a few small spots of verdigris around the fraction. Clear date and legends.



194. 1798 S-185 R2 VF25. Style II Hair with Small 8. Ten points sharper with some contact marks, including a dull punchmark on the cheek near the earlobe and several small rim nicks, the strongest of these a dull one opposite the forehead. Nice glossy steel brown and chocolate. The surfaces are smooth and attractive, but the contact marks are a distraction. E-MDS, Breen state III.



189. 1798 S-176 R4 VF20+. Style II Hair with Small 8. Sharpness VF35 but a few vertical hairline scratches have been smoothed out of the field over the bust, although portions of the scratches remain visible close over the bust. The field is slightly rough under the hair ribbon and there is a small, light rim bruise at L1. Otherwise the planchet and surfaces are very attractive, the reverse nearly choice. Glossy dark chocolate brown with underlying lighter golden brown toning covering the protected areas of the reverse. EDS, Breen state I. Listed by Bland as EF45 net VF20 and tied for CC#9. Ex Stack's 5/5/98-153



14

195. 1798 S-185 R2 VF20. Style II Hair with Small 8. Glossy chocolate and steel brown, the obverse with more gloss than the reverse, which is closer to frosty. The only notable mark is a shallow planchet flake on the bottom of the throat, as struck. MDS, Breen state IV. Called net VF20 in the Noyes census, his photo #38834. Ex Bowers & Merena 11/94:3369.

196. 1798 S-187 R1 VG10. Style II Hair with Small 8. A couple points sharper with some very light corrosion at RTY and traces of very light verdigris scattered about both sides, strongest at RTY. A pair of small, very light rim bruises at AM are the notable contact marks. EDS. The date and legends are strong. Ex David Garvin (all proceeds to EAC).

197. 1798 S-187 R1 VG7. Style II Hair with Small 8. Very slightly sharper with a dark steel brown stain covering the left side of the obverse. The rest of the planchet is an attractive glossy chocolate brown. A shallow planchet flake on the rim left of the first A in AMERICA is the only notable mark. M-LDS. The date and legends are strong.

198. Trio of 1798 Cents. S-167 R1 AG3. S-175 R4 Fair-2. S-184 R2- AG3. A couple are slightly sharper with defects. The date on the S-175 is very weak but the other two dates are easily readable. Lot of 3 coins.



199. 1799/8 S-188 R4 VG10. Overdate 9 over 8. Sharpness VF20 but covered with uniform fine to moderate granularity. No verdigris and only a few minor marks, including a light rim bruise below the hair ribbon, a thin nick under the L in LIBERTY, and a few faint hairline scratches on the cheek. Very slightly glossy dark olive and steel. EDS. The date is complete, including the bottoms of all 4 digits, and the legends are clear. Not perfect but pretty sharp for a 1799/8. Ex E. A. Nowak 12/65.



200. 1799 S-189 R2+ G4. The obverse is very slightly sharper but there are several shallow pitmarks scattered about, including a couple in the hair above the ear and a speck of verdigris on the nose. Most of the planchet is smooth and completely free of corrosion or other defects. Glossy steel brown and chocolate with a small splash of dark olive around the verdigris spot on the nose. The date is easily readable with the upper two-thirds of each digit strong, the lower third fading into the rim below. The reverse legends are complete or very nearly so, although portions are weak. A decent 1799 cent for the grade, and the relatively strong date is a big positive. Ex Empire Coins 7/12/04-William Chappelow.

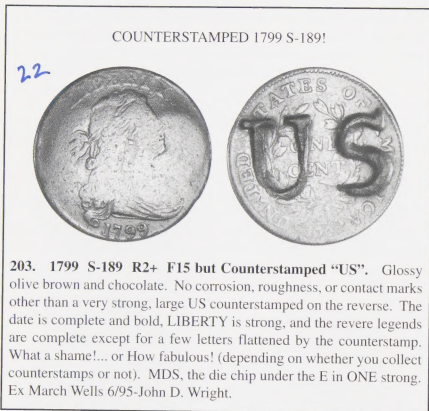


201. 1799 S-189 R2+ AG3. The obverse is a bit nicer but is covered with very fine hairline scratches and microscopic porosity. The date and LIBERTY are easy to read and nearly complete, the bottom of the date starting to fade into the rim below. The right side of the reverse is mostly legible while the left side shows only weak remnants of the wreath and legend. No verdigris. Mostly glossy chocolate brown. Far from perfect but the relatively strong date and LIBERTY are a big plus for this grade.

The 2005 EAC Convention Sale, April 23, 2005



202. 1799 S-189 R2+ AG3. Sharpness VG8 but moderately corroded. No verdigris, although there are traces of reddish scale at the rim above the head. No contact marks of any consequence. The date is strong in spite of the roughness, but only RTY of LIBERTY remains. The reverse legends are easily readable except for UNI, which is gone. Rather glossy dark olive and steel brown. MDS. A scudgy cent, but the strong 1799 date is a big plus. Ex David Garvin (all proceeds to EAC).



203. 1799 S-189 R2+ F15 but Counterstamped "US". Glossy olive brown and chocolate. No corrosion, roughness, or contact marks other than a very strong, large US counterstamped on the reverse. The date is complete and bold, LIBERTY is strong, and the reverse legends are complete except for a few letters flattened by the counterstamp. What a shame!... or How fabulous! (depending on whether you collect counterstamps or not). MDS, the die chip under the E in ONE strong. Ex March Wells 6/95-John D. Wright.



204. 1800/1798 S-191 R2 F12. Style I Hair. Overdate 1800 over 798. Sharpness near VF25 with the left obverse field smoothed rather crudely leaving behind myriad dull hairline scratches. The right obverse was also lightly smoothed, but the evidence is microscopic. The planchet is smooth, free of any hint of corrosion, so the reason for the smoothing is unknown. Otherwise the only contact marks are a small, very light rim bruise opposite the chin and a short scratch where the fraction bar should be. Nicely retoned glossy steel brown and chocolate. MDS. Ex 1979 EAC Sale, lot 125-David Garvin (all proceeds to EAC).

205. Pair of 1800 Cents. S-191 R2 G5. Style I Hair. Overdate 1800 over 798. S-211 R3- G5. Both are sharper with defects but have a strong date. Lot of 2 coins. Ex David Garvin (all proceeds to EAC).

206. Trio of Early Cents, 1800-1801. 1800/798 S-191 R2 G4. Style I Hair. Overdate 1800 over 798. 1800 S-203 R3- AG3. 1801 S-224 R1 G4. All are slightly sharper with minor defects but have a clear date. Lot of 3 coins. Ex David Garvin (all proceeds to EAC).

207. 1800/179 S-192 R3 G5. Style II Hair. Overdate 180 over 179. A few points sharper but covered with uniform light corrosion. No verdigris. A thin nick through the I in LIBERTY is the only mark. The date and legends are clear, and the overdate is easily visible. Slightly glossy dark olive brown with chocolate brown highpoints. M-LDS, Breen state III. Ex Jim Guthrie 6/79-John D. Wright.

208. 1800/179 S-194 R3- G6. Style II Hair. Overdate 180 over 179. Sharpness VG10 with a patch of very fine corrosion covering the lower right half of the obverse. No verdigris or notable contact marks. The date and legends are clear, and the overdate is easily visible. Glossy dark steel brown and chocolate, the rough area nearly matte. M-LDS, Breen state VII, with a series of rim cud breaks at ICA and the fraction. Ex 1977 EAC Sale, lot 40- David Garvin (all proceeds to EAC).



209. 1800/179 S-194 R3- VG10. Style II Hair. Overdate 180 over 179. Glossy olive and steel brown delicately mottled with chocolate brown tones. There are some light nicks scattered about both sides, especially in the left obverse field. The most notable nick is a rather long one well above the N in ONE. The top of the reverse is weakly struck relative to the bottom, which is very strong, and the tops of ERTY are very weak thanks to the opposing cud breaks at the fraction and ICA. LDS, Breen state VIII. This is the Breen plate coin for his die state VII, although the coin matches his description for state VIII.



210. 1800/179 S-195 R5 VG8. Style II Hair. Overdate 180 over 179. A couple points sharper but covered with extremely fine granularity under a slightly glossy dark steel brown patina. No verdigris or contact marks. A small spot of darker olive brown toning touching the top of the hair ribbon is a good identifying mark. The date and legends are strong and the overdate is clear. MDS, Breen state III. Ex Superior 2/292:896.



211. 1800/179 S-196 R1 VF25. Style II Hair. Overdate 180 over 179. Glossy steel brown and chocolate with a delicate splash of reddish brown toning in the field right of the Y in LIBERTY and a half dozen small spots of darker olive brown toning sprinkled on the obverse. The notable contact marks are a pinprick between the ribbon end and the adjacent A and a very light rim bruise at CA. The overdate is bold. MDS. Breen state III. Ex J. R. Frankenfield, Superior 2/17/01:456.



214. 1800 S-202 R4+ VG8. Mostly glossy dark olive and steel brown with extremely faint roughness under the natural patina. No verdigris. The only marks are a faint vertical hairline scratch in the field from the dentils off the bust tip and a light rim bruise at ER in LIBERTY. LDS, Breen state VII. Ex Dr. Bob Shalowitz 8/74-John D. Wright.



212. 1800 S-197 R1 VG10. A couple points sharper with too many light contact marks for the sharpness grade, plus a thin planchet lamination through the F in OF across to the rim above the D in UNITED, as struck. The notable marks are a short arc scratch in the field at the throat and a speck of light carbon inside the O in OF. Glossy chocolate brown with wisps of darker olive brown toning on the right side of the obverse. EDS. Ex David Garvin (all proceeds to EAC).



216. 1801 S-214 R3+ VG8. A couple points sharper with uniform microscopic granularity under a slightly glossy dark steel and olive patina. No verdigris, just a few minor nicks near the dentils left of the portrait. MDS.



213. 1800 S-199 R4 VG8. Attractive glossy medium brown and chocolate. Smooth, nearly choice surfaces. The only marks of any consequence are a tiny rim bruise left of the L in LIBERTY and a small rim nick at the U in UNITED. M-LDS, Breen state VIII. Ex John Reiner 11/80-John D. Wright.



217. 1801 S-219 R2 G4-. 3-Error Reverse. Clipped Planchet. Sharpness near G5 but there is very fine roughness covering most of the planchet. An arc-shaped hairline scratch on the cheek is the only notable mark. Slightly glossy dark chocolate and olive brown. The date is strong and the 3 reverse die-cutter errors are clear. E-MDS. Ex David Garvin (all proceeds to EAC).



218. 1801 S-220 R3 F12+. Error Fraction 1/000. Attractive glossy medium brown with chocolate brown toning on the highpoints. The surfaces are smooth and the only notable mark is a small pinprick left of the eye. E-MDS, Breen state III. The error fraction is clear. Nice for the grade. Ex Denis Loring-David Garvin (all proceeds to EAC).

219. 1801 S-223 R1 VG7. Error Fraction 1/000. Sharpness VG10 with very fine roughness on both sides, strongest on the reverse. No verdigris. A few fine hairline scratches in the obverse fields, none serious. Slightly glossy steel brown with reddish chocolate in protected areas. The date is bold and the legends are complete. Ex David Garvin (all proceeds to EAC).

220. 1801 S-224 R1 VG8. Sharpness F15 with fine granularity covering the fields. The roughness was minimized by a light burnishing that left glossy steel brown and chocolate surfaces. No verdigris, just a few rim bruises, the strongest one left of the lower curls. The date and legends are bold. Ex David Garvin (all proceeds to EAC).

221. Trio of Early Cents, 1801 & 1802. 1801 S-224 R1 VG7. 1802 S-230 R1 G4. 1802 S-237 R3 G4. The first two are slightly sharper with minor defects. All have a clear date. Lot of 3 coins.



222. 1802 S-225 R3- F15. Five points sharper with microscopic roughness covering both sides. There are some very light contact marks, including a dull pinprick left of the first A in AMERICA. Slightly glossy chocolate brown, the highpoints a few shades lighter than the protected areas. E-MDS, Breen state II. The lower left portion of the reverse is softly struck. Ex J. J. Teaparty 10/67-John D. Wright.



223. 1802 S-226 R3 F12. Sharpness VF20 or slightly better with patches of very fine roughness on both sides, and these patches contain traces of very fine verdigris. The only contact marks are some tiny, very light hairline scratches, mostly on the highpoints of the reverse. Rather glossy reddish chocolate and steel brown. MDS, Breen state III. Ex David Garvin (all proceeds to EAC).

224. 1802 S-227 R2 VG7. A point or two sharper but the strike is uneven, weak on the lower left of the obverse and upper left of the reverse (due to non-parallel die faces). Glossy chocolate and light olive brown with some minor contact marks consistent with the grade. LDS. Ex David Garvin (all proceeds to EAC).

225. 1802 S-228 R2 VG8. Error Fraction 1/000. Sharpness VF25 but lightly corroded. No verdigris, but there are some hairline scratches on the obverse and a dull arc-shaped scratch at ES-O. Rather glossy dark olive brown with chocolate brown highpoints. The date is strong but the error fraction is weak. Ex David Garvin (all proceeds to EAC).

226. Pair of Early Cents, 1802 & 1807. 1802 S-228 R2 G6. Error Fraction 1/000. Slightly sharper with specks of greenish verdigris on the obverse. The date is clear and the error fraction is easily visible. 1807 S-271 R1 G5. Comet Obverse. EDS, before the comet flaw appears. Strong date and clear legends. Lot of 2 coins.



227. 1802 S-229 R2+ VF20. Ten points sharper with extremely fine roughness under a mostly glossy dark olive and steel patina, the obverse displaying more gloss than the reverse. No verdigris. The only marks are a couple dull hairline scratches in the field behind the head, a line of tiny ticks through the O in ONE, and a tiny rim nick under the fraction. MDS, Breen state III.

228. Pair of 1802 Cents. S-230 R1 VG8. Glossy dark steel brown and chocolate. S-239 R3 G6. Glossy chocolate brown. A decent pair of lower grade cents, both with clear date and legends. Lot of 2 coins. Ex David Garvin (all proceeds to EAC).





229. 1802 S-231 R1 VF30. Stemless Wreath. Attractive glossy chocolate brown with steel brown toning on the highpoints. The surfaces are smooth and very attractive, just a few trivial contact marks from choice for the grade. The notable marks are a small nick on the left end of the shoulder and a light rim bruise over the O in OF. LDS, Breen state VIII.



230. 1802 S-231 R1 F12. Stemless Wreath. Sharpness VF25 or a bit better with several light rim bruises or dull rim nicks, mostly on the obverse, plus a flattened area at the second S in STATES where a planchet mark or flaw was very crudely "repaired." Otherwise this cent is an attractive glossy chocolate and steel brown with frosty light brown toning in protected areas. LDS, Breen state IX. Ex John Ashby 7/82-John D. Wright.

231. Trio of 1802 Cents. S-231 R1 AG3. Stemless Wreath. S-233 R2+ G4. S-241 R1 AG3. Stemless Wreath with Double Fraction Bar. A rather scruffy group but all have a readable date. Lot of 3 coins.



232. 1802 S-232 R1 F15. Nice glossy chocolate brown with the highpoints a shade or two lighter than the fields. Smooth and attractive for the grade. A short arc-shaped pinscratch through the tops of IBE is the only notable defect. MDS, Breen state IV.



233. 1802 S-232 R1 VF25. Five points sharper with some contact marks, including a light rim bruise right of the chin, a nick on the bust and another in the hair under the B, and a pinprick on the left foot of the N in ONE. Glossy chocolate and steel brown with frosty flowline luster in protected areas. LDS, Breen state VII. Ex David Garvin (all proceeds to EAC).

234. 1802 S-236 R1 VG8. A couple points sharper but the obverse is covered with light nicks, none significant but too many for the sharpness grade. A small splash of very fine carbon at the rim right of the eye; otherwise an attractive glossy chocolate brown. The date and legends are strong. EDS. Ex David Garvin (all proceeds to EAC).

235. Trio of 1802 Cents. S-237 R3 AG3. S-241 R1 G4. Stemless Wreath with Double Fraction Bar. S-242 R2 AG3. All have a readable date, and the S-241 shows the reverse die-cutter errors. Lot of 3 coins.

236. 1802 S-239 R3 G6. A couple points sharper but covered with very fine roughness. No verdigris, and the only mark is a small rim nick under the 8 in the date. Slightly glossy olive and steel brown. LDS. The obverse die cracks are strong. Clear date and legends.

237. 1803 S-243 R2+ VG8. Stemless Wreath with Double Fraction Bar. Sharpness F15 but lightly corroded, strongest in the left obverse field. No verdigris or marks, and the roughness is offset somewhat by a glossy steel brown and olive patina. EDS. The date is bold and the reverse legends and die-cutter errors are clear. Ex David Garvin (all proceeds to EAC).



238. 1803 S-243 R2+ F15. Stemless Wreath with Double Fraction Bar. Sharpness VF30 with microscopic granularity covering most of the planchet and moderate granularity in the field left of the portrait. No verdigris or contact marks. Slightly glossy steel brown and chocolate, the left obverse field matte from the roughness. The reverse die-cutter errors are bold. LDS, Breen state V, with rim cud breaks at TY to the rim opposite the tip of the nose. Ex David Garvin (all proceeds to EAC).



239. 1803 S-247 R3 VG10. Mumps Obverse. Nice glossy light olive brown and chocolate. Only minor contact marks consistent with the grade, none notable. The date and legends are bold. MDS, Breen state II. The "Mumps" defect is strong. Ex Stack's 11/1950:728-Willard C. Blaisdell, 1977 EAC Sale, lot 56-David Garvin (all proceeds to EAC).

240. Pair of 1803 Cents. S-251 R3- G4. S-258 R1 AG3. Large Fraction. Sharper but corroded. Lot of 2 coins.

241. 1803 S-251 R3- VG8. Sharpness VF20 but covered with uniform very fine granularity that left the surfaces matte. A small rim nick left of the upper hair ribbon is the only notable mark. Recolored dark bluish steel brown. Excellent detail, just dull. LDS.



242. 1803 S-252 R3- VG8. A couple points sharper with very fine roughness under a rather glossy dark steel brown patina, the highpoints a few shades lighter than the protected areas. No verdigris, and a light nick left of the mouth is the only contact mark. Very rare LDS, Breen state VIII, with a strong cud break at 18 and the lowest curl. Ex Kurt Krueger 4/92-John D. Wright.

RARE EARLY DIE STATE 1803 S-253



243. 1803 S-253 R3 VG10+. A couple points sharper with extremely fine roughness leaving the surfaces more matte than glossy. No verdigris and just a few minor marks, including a dull rim bruise right of the Y, another at ME, and a couple small nicks under the L. Slightly glossy dark steel brown. Very rare EDS, Breen state I, without any die cracks on the reverse. Ex Jerry Stallons 6/75-John D. Wright.

244. 1803 S-254 R2 VG8. Sharpness F12 with some very small rim nicks on both sides, a collection of ticks at the top of the wreath, and a barely perceptible bend in the planchet. Rather glossy dark bluish steel brown and olive with lighter steel brown toning covering the highpoints. EDS, Breen state I. Ex David Garvin (all proceeds to EAC).



245. 1803 S-255 R1 VG10. Slightly sharper with a large, dull nick over the N in ONE and a barely visible bent in the planchet. Otherwise just a few light contact marks consistent with the grade. Glossy steel brown and chocolate with traces of reddish brown toning. EDS. Ex Dr. Charles Ruby (III), Superior 1975:239-John D. Wright.

246. 1803 S-257 R2 VG7. Large Fraction. Very slightly sharper with very fine roughness under a slightly glossy chocolate brown patina. There are faint hairline scratches in the field and a dull rim nick below the bust tip. The date and legends are clear.



247. 1803 S-258 R1 F12. Large Fraction. Sharpness EF40 with finely granular surfaces, including a patch of moderate granularity at LIBE into the hair below. There are specks of verdigris at UNI and the wreath below, but no contact marks. Sharply struck EDS. Recolored dark bluish steel brown and light olive, the obverse rather glossy and the reverse matte. Ex David Garvin (all proceeds to EAC).

RARE TERMINAL DIE STATE 1803 S-259



248. 1803 S-259 R4 G4. Large Fraction. Very slightly sharper with nearly a dozen sharp pinscratches in the field before the portrait. Otherwise the surfaces are decent for the grade, just a few minor marks. Mostly glossy chocolate brown. The date and legends are clear. Extremely rare terminal die state, Breen state IV, with a strong cud break connecting TAT to the rim above. Only two examples known to me, and both are in low grade.

249. 1803 S-260 R1 VG8. Large Fraction. Mostly glossy chocolate brown with very fine roughness under the natural patina. No verdigris. The only marks are a rim nick at the B in LIBERTY and a tiny rim bruise at the first S in STATES.

250. Trio of Early Cents, 1803 & 1805. 1803 S-260 R1 Basal State-1. Large Fraction. 1805 S-269 R1 VG7. 1805 S-269 R1 G5. The first is junk but has a readable date while the other two are decent, smooth cents. Lot of 3 coins.

251. Pair of 1803 Cents. S-261 R2+ VG8. Large Fraction. Sharpness VF25 but corroded. S-263 R3 VG10. Small Fraction. Sharpness F15 or better with a dull, strong scratch on the reverse. EDS. Lot of 2 coins. Ex David Garvin (all proceeds to EAC).



252. 1803 NC-1 R5+ Fair-2+. Sharpness G4 or nearly so but lightly corroded, and there is some greenish verdigris in protected areas. The date is weak but readable and the legends are mostly clear, especially the left side of the reverse. Slightly glossy dark olive and chocolate brown.

253. 1804 S-266a R4 Fair-2+. Glossy chocolate brown. Smooth and attractive for the grade, just well worn. The only notable mark is a small, light rim bruise at the bottom of the reverse. The date is easily readable, although the bottoms of the digits fade into the rim below. Perhaps a third of the legends remain readable. EDS. Ex David Garvin (all proceeds to EAC).



254. 1804 S-266a R4 VG7. Choice glossy chocolate brown. Smooth and very attractive for the grade. The only marks of any consequence are a small rim bruise over the E in LIBERTY and a shallow planchet flake left of the fraction. The date is strong and legends clear. E-MDS. Breen state II. The die cracks at ERTY and MERIC are clear. Ex David Garvin (all proceeds to EAC).



255. 1804 S-266b R4 G5. Glossy olive brown and chocolate. There are some light contact marks on the obverse, none notable, plus a dull scratch above ONE and a shorter one through NITE. A couple shallow planchet flakes over TED round out the list of significant defects, but overall this is a decent cent for the grade. The date is easily readable, only the bottom of the 4 starting to fade into the rim below. The legends are also easily readable, but the tops of STATES OF are fading away. MDS. Breen state III, with a strong cud break at RTY. Ex Empire Coins 7/12/04-William Chappelow.



256. 1804 S-266c R2 G4. Mostly glossy olive brown and chocolate with very fine roughness under the natural patina. A dull, arc-shaped scratch in the curl left of the date, a shallow pitmark close under the earlobe, and a small rim nick at the I in LIBERTY are the only notable marks. The date is easily readable, although the bases of the 18 fade into the rim below, and the tops of ITED STATES fade into those rims as well. LDS. Breen state IV, with strong cud breaks at RTY and MERIC.



257. 1804 S-266c R2 Basal State-1. Counterstamped "S.W.L." and "1300". Rather glossy chocolate brown. The date is mostly gone, although the 18 is faintly visible. The attribution is unmistakable, though, since the cud breaks at RTY and MERIC are mostly clear. A beast of an 1804 cent, but a great counterstamp. How often do you get the chance to buy counterstamps of 1799 and 1804 in the same sale?!

258. Pair of Cents with Altered Dates, an "1804" and "1815." The first is an 1807 S-276 altered to read 1804, and the quality of the work is something less than outstanding. The reverse is upset and the grade is G4 at best. The second piece is an 1813 S-292 altered to read 1815. This cent is rather beat up, but the alteration is more deceptive. Net grade is AG3. Lot of 2 coins. Ex David Garvin (all proceeds to EAC).



259. 1805 S-267 R1 VG10. Sharpness VF35 but covered with light to moderate corrosion. No verdigris or marks. Glossy dark olive and steel. Sharp but not very pretty. Ex David Garvin (all proceeds to EAC).



260. 1805 S-268 R3 VF20+. Glossy steel brown and chocolate. The surfaces are smooth and show only minor marks, including some dull nicks at UNITED and another under the O in ONE. A decent example of this scarce variety.

*The 2005 EAC Convention Sale, April 23, 2005*

**261. 1805 S-269 R1 G6.** A couple points sharper with light roughness covering much of the planchet. Rather glossy reddish chocolate brown. There are specks of verdigris at STA but no significant contact marks. The date is bold and the legends are clear.

**262. Pair of Early Cents, 1805 & 1807.** 1805 S-269 R1 VG8. Sharpness F12 but covered with uniform microscopic granularity. Retoned slightly glossy medium to dark steel. 1807 S-271 R1 G5+. Comet Obverse. Glossy reddish chocolate and steel brown. EDS, before the comet flaw forms. Both have a strong date and clear legends. Lot of 2 coins. Ex David Garvin (all proceeds to EAC).



**263. 1806 S-270 R1 F12.** Sharpness EF45 but covered with moderate granularity. No verdigris or marks. Matte dark steel brown with bluish steel overtones. Very sharp details, but dull. Ex David Garvin (all proceeds to EAC).



**264. 1807 S-271 R1 VG10.** Comet Obverse. Sharpness VF30 with uniform microscopic granularity covering the planchet. No verdigris, a very tiny rim bruise under the bust the only mark. Matte dark chocolate and steel brown. MDS. The Comet flaw is clear.



**265. 1807/6 S-272 R4+ AG3.** Overdate Small 7 over 6. Glossy chocolate brown with mostly smooth, attractive surfaces. Basically just well worn. The only defects of any consequence are some nicks or tiny planchet voids in the field before the face. The date is clear and the overdate is obvious, only the bottom of the 8 starting to fade away. STATES OF AMERICA is mostly gone but the remainder of the reverse legend is readable. Overall a nice low-grade example of this classic rarity. Ex Ray Chatham 1972-Jim Long-McCawley & Grellman Auctions 8/14/92:117.

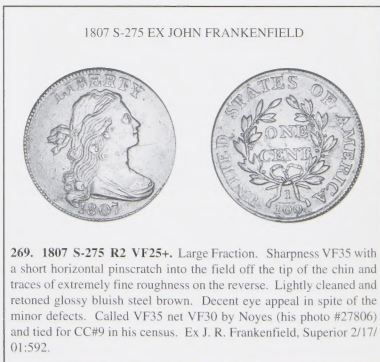


**266. 1807/6 S-273 R1 VF30.** Overdate Large 7 over 6. Glossy chocolate and steel brown with a couple tiny wisps of darker olive toning on the neck and bust. Smooth and attractive, free of any notable marks. LDS, although the rim cud breaks at D-STA are weak. Struck very slightly off center to K-4.



**267. 1807/6 S-273 R1 VF20.** Overdate Large 7 over 6. Glossy steel brown and reddish chocolate with hints of bluish steel overtone on the reverse. The obverse tuning is mostly uniform while the reverse is more mottled and there are tiny specks of greenish verdigris at the second T in STATES. The only mark is a thin vertical planchet fissure from the bust tip into the field above. LDS with clear rim cud breaks at D-STA. Ex David Garvin (all proceeds to EAC).

**268. Trio of 1807 Cents.** S-273 R1 AG3+. Large Overdate 7 over 6. S-276 R1 AG3. Reverse not rotated. S-276 R1 Fair-2. Reverse rotated 150 degrees CCW. The second 2 are sharper with defects, but all have a readable date. Lot of 3 coins.



**269. 1807 S-275 R2 VF25+.** Large Fraction. Sharpness VF35 with a short horizontal pinscratch into the field off the tip of the chin and traces of extremely fine roughness on the reverse. Lightly cleaned and retoned glossy bluish steel brown. Decent eye appeal in spite of the minor defects. Called VF35 net VF30 by Noyes (his photo #27806) and tied for CC#9 in his census. Ex J. R. Frankenfield, Superior 2/17/01:592.



270. 1807 S-275 R2 VG10. Large Fraction. Sharpness VF35 but moderately granular. No verdigris or significant contact marks. Slightly glossy dark olive brown and steel. Ex Peachtree Coins 3/63-John D. Wright.



271. 1807 S-276 R1 VF25. Large Fraction. Misaligned Obverse. Glossy chocolate brown delicately mottled with some slightly darker olive brown tones on the obverse. There is a splash of reddish chocolate toning in the field at the hair ribbons, and this area contains extremely fine roughness. Otherwise the surfaces and eye appeal are excellent. EDS with the reverse rotated 30 degrees CCW. The obverse is misaligned to K-10.5 while the reverse is centered on the planchet.

272. Group of eighteen 1807 S-276 Cents with various Reverse Rotations. 0 degrees, VG8. 60 degrees CW, G6. 110 degrees CW, VG8. 120 degrees CW, G6. 170 degrees CW, AG3. 170 degrees CW, G5. 175 degrees CW, VG10. 180 degrees, VG10. 170 degrees CCW, VG8. 165 degrees CCW, G5. 160 degrees CCW, VG8+. 155 degrees CCW, AG3. 135 degrees CCW, G6. 100 degrees CCW, VG8. 90 degrees CCW, AG3+. 60 degrees CCW, VG8. 40 degrees CCW, G6. 30 degrees CCW, G4. Some are slightly sharper with minor defects. An interesting group for the specialist. Some of these rotations are undoubtedly very rare. Lot of 18 coins.



273. 1807 S-276 R1 VF30 Large Fraction. Choice glossy chocolate brown with medium brown highpoints. Smooth and very attractive, free of any notable defects. MDS with clear rim cud breaks at IBE. The obverse is slightly misaligned to K-4 and the reverse is rotated 110 degrees CCW. Great eye appeal. Ex David Garvin (all proceeds to EAC).

274. Pair of 1807 S-276 Cents with different Reverse Rotations. G-5, the reverse rotated 30 degrees CCW. AG3, the reverse 165 degrees CCW. The second is sharper with defects but both have a clear date. Lot of 2 coins.

275. Trio of Turban Head Cents, 1808-1813. 1808 S-277 R2 G5. 12-Star obverse. 1812 S-291 R2+ VG7. Small Date. 1813 S-293 R2 G6. All are sharper but lightly corroded with some marks or other defects. All have a strong date. Lot of 3 coins. Ex David Garvin (all proceeds to EAC).

276. Group of 4 Turban Head Cents, 1808-1814. 1808 S-277 R2 G6. 12-Star obverse. LDS. 1811 S-287 R2 AG3. 1813 S-292 R2 G5. 1814 S-295 R1 VG10. Plain 4. All are sharper but corroded. All have a clear date. Lot of 4 coins. Ex David Garvin (all proceeds to EAC).

277. 1808 S-278 R3 G5. Turban Head. Glossy steel and olive brown. Smooth with only a few minor marks, including a thin planchet lamination through star 13. The date and legends are easily readable.

278. 1809 S-280 R2 VG8. Turban Head. Sharpness F15 but lightly corroded and there are traces of very shallow verdigris in protected areas. No contact marks. Slightly glossy dark olive and steel brown. The date and legends are clear. Ex David Garvin (all proceeds to EAC).



279. 1809 S-280 R2 G6. Turban Head. Very slightly sharper with a couple faint hairline scratches on the obverse, and these are mostly hidden under the glossy dark olive and steel brown patina. M-LDS. The date and legends are strong. Ex David Garvin (all proceeds to EAC).

280. 1809 S-280 R2 G5. Turban Head. Slightly glossy dark chocolate and steel brown. Mostly smooth and free of notable marks, but there is some microscopic roughness under the patina. Date and legends clear. Ex David Garvin (all proceeds to EAC).

281. 1810/09 S-281 R1 G5. Clipped Planchet. Turban Head. Glossy dark steel brown. A hairline scratch in the field from the chin to star 5, otherwise free of notable marks. A small, curved planchet clip affects only the rim outside stars 10 & 11. LDS, the overdate still easily visible. Ex David Garvin (all proceeds to EAC).



282. 1810 S-283 R2 VF30. Turban Head. Ten points sharper with extremely fine granularity under a rather glossy dark steel and olive brown patina. The obverse is glossier than the reverse. No verdigris or marks other than a few very faint hairlines in the field left of stars 10-13. MDS. The obverse is slightly misaligned to K-4 while the reverse is well centered on the planchet. Ex Tom Reynolds.

283. 1810 S-283 R2 G6. Turban Head. Very slightly sharper with microscopic roughness under the somewhat glossy chocolate brown patina. There are a few small splashes of dark olive toning in protected areas and light contact marks scattered about both sides, including a small pinprick under the first T in STATES. LDS.



284. 1810 S-284 R3 VG10. Turban Head. Five points sharper with a few light rim bruises on the left side of the obverse and a small dig under the right side of the N in CENT. Lightly cleaned and retoned glossy bluish steel brown and chocolate. LDS. Ex David Garvin (all proceeds to EAC).

285. 1810 S-285 R2 VG8+. Turban Head. Glossy chocolate and steel brown. Smooth and attractive, free of any notable defects. A swipe of reddish brown toning in the hair right of the neck is the best identifying mark.



286. 1811/10 S-286 R3 VG8. Overdate 11 over 10. Turban Head. A few points sharper with very fine granularity in the fields and protected areas. No verdigris. The only marks are a faint hairline scratch from the rim under the 11 to the curl on the neck and another slightly stronger one from the O in OF to the leaf below. Somewhat glossy olive brown with steel brown toning on the highpoints. The overdate is clear.



287. 1811/10 S-286 R3 VG8. Overdate 11 over 10. Turban Head. A couple points sharper with microscopic roughness under a rather glossy dark olive and steel brown patina. There are traces of very light verdigris in protected areas, especially on the reverse, plus a small nick just right of the center dot over the N in CENT. The overdate is clear. Ex 1979 EAC Sale, lot 143-David Garvin (all proceeds to EAC).



288. 1812 S-288 R2 F15. Large Date. Turban Head. Five points sharper with a nick in the field over the bust tip and a rim bruise at the C in AMERICA, plus a couple very faint hairline scratches at the face and field to the left. The obverse is glossy medium brown with dark olive brown toning in some of the protected areas. The reverse is not quite as glossy and is a slightly darker shade of bluish steel brown with reddish brown splashes at D-STATES. LDS. Ex John Hamrick 3/70-John D. Wright.



289. 1812 S-289 R1 VG10. Large Date. Turban Head. Sharpness VF30 with fine to moderate porosity covering most of the planchet, the obverse a bit rougher than the reverse. No verdigris or marks. Dark steel brown and olive with traces of mint luster in protected areas of the reverse. E-MDS. Ex David Garvin (all proceeds to EAC).

290. 1812 S-289 R1 VG8. Large Date. Turban Head. Sharpness F12 with very fine corrosion under a slightly glossy chocolate patina with darker olive brown toning in protected areas. There is a thin nick at the dentils under the 8 and a hairline scratch along the upper edge of the bust. M-LDS.



291. 1812 S-290 R1 F12. Small Date. Turban Head. Sharpness VF25 but covered with uniform very fine granularity that's mostly hidden under a rather glossy dark chocolate and steel brown patina. There are traces of verdigris crud in protected areas and a small, very light scuff on the throat. MDS. Ex David Garvin (all proceeds to EAC).



295. 1813 S-292 R2 VF20. Turban Head. Glossy chocolate and steel brown. No corrosion and just a few minor contact marks, including a trail of tiny ticks from star 13 to the curl above and a faint horizontal hairline scratch in the field left of star 10. MDS.

296. 1813 S-292 R2 VG7. Turban Head. Sharpness F12 with uniform fine granularity covering both sides. No verdigris or marks. MDS.

297. Pair of 1813 Turban Head Cents. S-292 R2 G5. S-293 R2 AG3. Both are sharper with defects but a clear date. A complete set of 1813 varieties! Lot of 2 coins.

1812 S-290 STRUCK FROM MISALIGNED DIES



292. 1812 S-290 R1 VF20. Small Date. Turban Head. Misaligned Dies. Glossy dark chocolate brown with slightly lighter reddish chocolate toning in protected areas. The surfaces are smooth and quite attractive for the grade, a very light rim bruise at the D in UNITED the only notable mark. MDS. The obverse is misaligned 5-10% to K-10.5 while the reverse is properly centered on the planchet. This cent is described and plated in the Breen book (Remarks section, page 816, and photo on page 839). A premium example of this type of mint error on a Turban Head cent. Ex Gordon Wrubel 4/83-John D. Wright.



298. 1814 S-294 R1 F12. Crosslet 4. Turban Head. Slightly sharper with a rim bruise under the bust tip. Otherwise smooth and attractive for the grade, only minor contact marks and no corrosion. Glossy dark bluish steel brown and chocolate. MDS. Struck very slightly off center to K-7. Ex David Garvin (all proceeds to EAC).

299. 1814 S-295 R1 G5. Plain 4. Turban Head. Glossy steel brown and chocolate. No roughness and only minor marks, including a rim bruise under the U in UNITED and a pinprick at the leaf under the I in AMERICA. The date is bold and the legends are complete. EDS.

300. 1814 S-295 R1 VG10. Plain 4. Turban Head. Sharpness VF35 with small patches of corrosion, strongest on the reverse. The largest of these rough areas is above the NT in CENT and a slightly smaller one shows just left of the O in ONE. No verdigris. Recolored a mostly glossy dark chocolate. Sharply struck MDS. Ex David Garvin (all proceeds to EAC).

301. 1814 S-295 R1 VG8. Plain 4. Turban Head. Nice glossy chocolate brown with smooth, attractive surfaces and no notable marks. M-LDS. The reverse is perhaps F12 while the obverse is VG7, a difference which is typical of the later die states of many Turban Heads.

302. 1814 S-295 R1 G6. Plain 4. Turban Head. Glossy chocolate and steel brown, the reverse delicately mottled with some lighter chocolate brown tones. Excellent eye appeal for the grade, only a few trivial contact marks. The reverse is several points better than the obverse, as usual. LDS.

293. 1812 S-290 R1 G4. Small Date. Turban Head. Glossy dark steel brown and chocolate. Smooth and free of defects, just worn. LDS.



294. 1812 S-291 R2+ VF30. Small date. Turban Head. Sharpness very near EF40 with too many tiny contact marks for the sharpness grade. The notable marks are a short line of very tiny ticks in the field below the lips, a light hairline scratch down through the O in OF, and a very light rim bruise at the F in OF. Glossy steel brown and reddish chocolate with frosty flowline luster covering the protected areas. The obverse is very slightly misaligned to K-7.5 and the reverse off an equal amount to K-1. E-MDS. Not perfect but still a very nice example of this scarce variety. Ex Paul Pattacini.



RARE EARLY DIE STATE 1816 N-1

**303. 1816 N-1 R4+ G5.** Glossy chocolate and steel brown. Light contact marks are scattered about both sides, the only notable ones being a shallow planchet chip along the right side of the 8 in the date and another in the field right of star 2. Very rare early die state, before the rim cud breaks at stars 8-10. Ex McCawley & Grelman Auctions 1/11/92:110-Wes Rasmussen-Dennis Mendelson, Superior 9/21/98:1272.



**304. 1816 N-3 R4+ VF20.** Fifteen points sharper with several hairline scratches at stars 7-10. Otherwise the only mark is a small, light rim bruise at the E in AMERICA. Glossy very dark olive brown thanks to a coat of something, possibly added to cover the effects of an old cleaning. Looks better than it might sound. MDS.



**305. 1816 N-7 R3 AU50.** Sharpness very close to mint state but there is a dusting of very fine carbon between stars 9 & 10 with extremely fine roughness in the field down to star 12. Glossy medium brown and chocolate with hints of reddish chocolate toning on both sides. The surfaces are satiny and lustrous. M-LDS. Ex Dr. Bob Shalowitz 2/76-1980 EAC Sale, lot 159- David Garvin (all proceeds to EAC).

**306. Group of 9 Middle Date Cents, 1816-1838.** 1816 N-4 R2 VG7. 1816 N-6 R2 VG8. 1817 N-15 R4- VG7. 1818 N-7 R1 F12. 1819/8 N-1 R1+ G5. 1820 N-10 R2 F12. Large Date. 1824/2 N-1 R1 VG10. Overdate 4 over 2. 1827 N-11 VG10. 1838 N-4 R2 VF20. Some are sharper with minor defects. Lot of 9 coins. Ex David Garvin (all proceeds to EAC).

**307. Group of 6 Middle Date Cents, 1816-1834.** 1816 N-7 R3 VG8. 1819 N-5 R3 VG8. 1827 N-2 F15. 1827 N-3 R2 VG8. 1832 N-1 R2 F12. 1834 N-1 R1 F15. Double profile on the nose, lips, and chin. Some are slightly sharper with minor defects. Lot of 6 coins.



**308. 1816 N-8 R3 EF40.** Glossy medium brown and chocolate with steel brown toning on the highpoints and a splash of darker steel brown toning right of the E in ONE. The protected areas are covered with frosty flowline luster. There is a very faint hairline scratch from star 7 to star 9 and a dull, very light nick on the lower end of the rim cud above star 10. LDS with three rim cud breaks on the obverse, the one at stars 3-4 very thin due to the narrow rim in that area. Ex Stack's 10/38:657-Henry C. Hines-unknown-1980 EAC Sale, lot 160-Ed Jasper.



**309. 1817 N-1 R4 VF25.** Ten points sharper with extremely fine roughness under the glossy chocolate brown patina. No verdigris, just a few dull rim nicks, including one over star 5 and another at the T in UNITED. Ex C. E. Bullowa.



**310. 1817 N-6 R1 VF30.** Oversize Planchet. Glossy chocolate and steel brown, the obverse very delicately mottled and a couple shades lighter than the reverse. Frosty flowline luster covers the protected areas. Excellent eye appeal and only a few trivial contact marks. Struck on a planchet that has a slightly larger diameter than normal, possibly a stage 1 planchet that failed to have the rims upset. Regardless, the rims are wider than normal. MDS. Ex Bob Essig 8/93-John D. Wright.

RARE 1817 N-7 WITHOUT MOUSE



311. 1817 N-7 R7+ F15. Without Mouse. Sharpness VF30 but covered with uniform very fine granularity under a rather glossy dark steel and olive brown patina. There are a few faint hairline scratches on the forehead and a couple patches of light verdigris on the reverse, including one at the dentils under the stem tip. Extremely rare early die state without the "Mouse Top" break nearly always seen on this variety. Certainly one of the finest among the half dozen known without the mouse. Ex William Amshay.

NICE 1817 N-9 WITH MOUSE



312. 1817 N-9 R2 MS60. Mouse Top. Lustrous light bluish steel brown with faded mint red covering much of the right side of the obverse and at least a third of the reverse. There is a small splash of reddish olive toning at the dentils under the 8 and a spot of very light carbon on the upper left end of the line under CENT. The only contact mark is a small rim nick at star 8. Excellent luster and eye appeal. LDS with a strong "Mouse Top" break on the top of the head under star 8. A great mouse and a gift to boot. Ex David Garvin (all proceeds to EAC).

1817 N-10 REVERSE BROCKAGE



313. 1817 N-10 R1 VG10. Reverse Brockage. A couple points sharper with extremely fine granularity covering the reverse (normal side) causing those surfaces to display only a little gloss while the incuse (brockage) side is glossy and choice. Chocolate brown. The only marks of any consequence are dull horizontal scratches inside the wreath on the normal side. The brockage side would grade VF20 or better by itself. Ex Len's Coins (Madison, Wisconsin 7/87-John D. Wright).



314. 1817 N-17 R4 F12. Sharpness VF20 with very fine granularity covering both sides, strongest on the obverse. There are a few specks of light verdigris in protected areas and a very small rim bruise between stars 7 & 8. Slightly glossy dark chocolate and steel brown. E-MDS.



318. 1818 N-4 R4+ Fair-2+. Glossy olive and chocolate brown. The surfaces are mostly smooth. There is a small but deep dig under the first A in AMERICA, a nick across the T in CENT, and a scuff on the bottom of the wreath. The date is weak but complete. Not too bad for the grade. EDS.

319. 1818 N-5 R3 VF20. Five points sharper but the surfaces are somewhat matte thanks to extremely fine roughness, strongest at stars 9-10. No marks. Slightly glossy dark steel brown and chocolate. LDS.



320. 1818 N-6 R1 EF40. Ten points sharper with a small patch of light contact marks in the field over the bust tip, another at the top of the head under star 8, and specks of very fine verdigris on the bottom of the reverse. Glossy light to medium brown with darker chocolate brown toning covering the left side of the obverse. Frosty luster covers the protected areas on both sides. MDS.



321. 1818 N-6 R1 EF45. Slightly sharper but the obverse was very lightly cleaned and retoned a glossy bluish steel brown with frosty very faded red in protected areas. The reverse is glossy medium brown with lustrous golden light brown in protected areas. Some darker bluish steel toning under star 13 and a small spot of olive brown toning at the dentils over IT in UNITED are the best identifying marks. M-LDS with strike doubling from die bounce on LIBERT, the ear, hair, stars 1-5, and the 18 in the date. Excellent eye appeal in spite of the retoning. Ex Tom Reynolds.



322. 1818 N-7 R1 AU50. Five points sharper with a tight grouping of small nicks in the field off the chin. Otherwise free of any notable defects. Nicely struck EDS with hard, slightly reflective fields. Glossy medium brown and chocolate with underlying mint luster in protected areas. Ex Ed Jasper.

315. 1818 N-1 R2+ AU55. Glossy medium brown with frosty mint luster covering the fields and protected areas. The surfaces are satiny and the eye appeal is excellent. Just a hint of friction on the highest points from mint state. A bit of slightly darker olive brown toning in the field before the face is the best identifying mark. M-LDS. Ex Anderson Dupont, Stack's 9/24/54:555-Herbert Oechsner, Stack's 9/8/88:82-March Wells, Superior 2/7/2000:1772.

316. 1818 N-2 R4+ VG7. Glossy chocolate and olive brown with a splash of very fine dark green verdigris at the base of the 818. Otherwise smooth and attractive for the grade. EDS.



317. 1818 N-3 R3 EF45. Glossy dark chocolate brown with underlying frosty luster in protected areas. Choice surfaces and excellent eye appeal. A dull nick in the dentils at AM is the only notable defect. LDS, the reverse rotated 35 degrees CCW. Ex Vern Lowe 4/79-Ed Jasper.



323. 1818 N-7 R1 AU50. Frosty light steel brown and golden tan with delicate overtones of light bluish steel covering the fields and flowline luster on both sides. No spots, and the only contact mark is a tiny nick hidden on the leaf under the O in OF. E-MDS with the reverse rotated 40 degrees CCW.



324. 1818 N-8 R3 VF35. Ten points sharper with extremely fine porosity under a rather glossy dark olive and steel brown patina, the obverse showing more gloss than the reverse, which is closer to matte. Satiny mint luster covers the protected areas. No verdigris or marks. Nicely struck E-MDS. Ex Dr. French-Henry C. Hines-Dr. William H. Sheldon-Floyd T. Starr-1949 ANA Sale, lot 901-Willard C. Blaisdell 9/76-Del Bland 9/76-R. E. Naftzger, Jr.-Ed Jasper.



325. 1818 N-9 R3 VF35. Sharpness EF40 with a few small rim nicks, the strongest of these at star 10. Frosty steel brown and chocolate, the reverse delicately mottled. LDS. Ex Chris McCawley 4/90-Ed Jasper.



326. 1818 N-10 R1 MS60+. A nice red & brown example of this common Randall Hoard variety. A few minor spots but lots of frosty red remains on both sides. MDS.

327. 1818 N-10 R1 AU55. Mint state sharpness but lightly cleaned and retoned frosty dark bluish steel with wisps of reddish brown toning on the obverse. No spots or verdigris. A vertical nick at the left top of the E in ONE is the notable mark. MDS, the usual Randall Hoard die state. Nice flowline luster, but the color isn't great. Ex David Garvin (all proceeds to EAC).

BOLD 1819/8 N-1 OVERDATE



328. 1819/8 N-1 R1+ AU58. Overdate 9 over 8. Sharply struck E-MDS with hard, slightly reflective fields. Just the barest hint of rub on the highest points from mint state. There is a tiny tick in the field left of star 12 and a small splash of reddish brown toning in the wreath under the C in AMERICA. Glossy medium brown mottled with some darker olive brown, mostly on the obverse. The overdate is bold. Ex Darwin Palmer 4/88-Ed Jasper.



329. 1819 N-2 R1 AU55. Large Date. Prooflike. Glossy olive brown with traces of very faded mint color in a few protected areas. Sharply struck with just a hint of light rub on the highest points. A tiny nick in the field off the chin is the only mark. Very early die state with prooflike fields on both sides. The undertype 8 (under the 9) is crisp, even though this is not called an overdate variety. Outstanding eye appeal. Ex Rick Gross 2/78-Ed Jasper.



332. 1819 N-5 R3 VF25. Sharpness EF40 with extremely faint roughness under a glossy dark olive brown patina. No verdigris or marks. MDS. Ex Scott Stamp & Coin 11/21/47-Willard C. Blaisdell 9/76-Del Bland 2/80-Ed Jasper.



330. 1819 N-3 R3 EF40+. Glossy dark chocolate brown delicately mottled with some lighter brown tones on the reverse. The field at stars 6-9 is covered with frosty light to medium brown toning. Frosty flowline luster covers the protected areas on both sides. The surfaces are satiny and very attractive. The only contact marks are a very tiny tick in the field over star 13 and a light horizontal nick under the E in ONE. MDS. Very attractive, especially for this tough die variety.



333. 1819 N-8 R1 EF45. Ten points sharper but lightly cleaned and retoned frosty dark reddish chocolate and steel brown. No spots and just a few tiny contact marks. Sharply struck EDS. Ex David Garvin (all proceeds to EAC).



331. 1819 N-3 R3 VF30+. Ten points sharper but lightly cleaned and retoned glossy medium brown. There are some tiny contact marks on both sides, none significant, and a few tiny specks of dark toning on the reverse, including one on the berries right of the E in ONE. MDS.



334. 1819 N-8 R1 AU50. Mint state sharpness with a light hairline scratch on the cheek, a dull rim nick under the 9, and a splash of reddish toning covering STATES, and this red area contains some extremely fine roughness. Otherwise the planchet is an attractive lustrous steel brown. LDS. Ex J. R. Frankenfield 1/88-John D. Wright.



335. 1819 N-10 R4 VF25. Slightly sharper with some extremely fine roughness on the reverse, mostly at ON in ONE, and the rough area contains traces of carbon dust. The obverse is a choice glossy steel brown with frosty mint luster in protected areas. The reverse is a mix of chocolate and brown. A light rim bruise at the C in AMERICA is the only notable mark. MDS. Ex David Garvin (all proceeds to EAC).



336. 1820/19 N-1 R1 VF35. Large Overdate 20 over 19. Glossy medium brown with steel brown toning on the highpoints. A small nick in the field right of star 4 is the only defect. E-MDS, the overdate clear. Ex Doug Bird 4/94-Ed Jasper.

340. 1820 N-9 R3 VF30. Large Date. Glossy medium brown and chocolate. Just a few trivial contact marks. Excellent eye appeal, nearly choice. MDS. Ex 1991 EAC Sale, lot 143-Ed Jasper.



337. 1820/19 N-3 R2 VF25. Small Overdate 20 over 19. Ten points sharper with a couple faint hairline scratches from the top of the head down to the center of the neck. Otherwise the surfaces are smooth and attractive. Glossy medium brown, Sharp EDS with slightly reflective fields on both sides. The overdate is clear.

341. 1820 N-10 R2 AU55. Large Date. Mint state sharpness but there are two small digs at the top of the obverse, one left of star 6 and the other right of star 8. Lustrous light bluish steel and sea-green with satiny surfaces. MDS.



338. 1820 N-8 R3-EF40. Glossy dark chocolate brown with frosty golden light brown toning in protected areas of the reverse. The surfaces are satiny and virtually flawless, and the eye appeal is outstanding for the grade. A choice cent. MDS. Ex Bruno Crossfield 12/56-Willard C. Blaisdell 9/76-Del Bland-Stu Hodge 7/84-Ed Jasper.

342. 1820 N-11 R2 EF40. Large Date. Glossy steel brown with frosty light steel brown toning in protected areas and hints of very faded mint color in a couple places on the obverse. A tiny nick in the field off the chin is the only notable mark. M-LDS. Ex Tom Reynolds-1999 EAC Sale, lot 421-Ed Jasper.



339. 1820 N-9 R3 EF40. Large Date. Glossy medium brown and chocolate, the obverse a bit mottled. There is ample frosty mint luster remaining in protected areas. The surfaces are nearly choice, the only mark being a very tiny hairline scratch near the dentils at D-S. MDS.

343. 1820 N-12 R3 AU50. Large Date. Slightly sharper with traces of microscopic carbon at stars 10 & 11. Otherwise the surfaces are satiny and free of defects. Lustrous dark bluish steel brown and chocolate. E-MDS. Ex Tony Terranova 4/93-Ed Jasper.



344. 1820 N-13 R1 MS63. Large Date. Choice lustrous bluish steel with traces of faded mint red on both sides. The surfaces are satiny and the eye appeal is excellent. The best identifying mark is a faint wisp of darker toning under the N in CENT. Sharply struck MDS, the usual Randall Hoard die state. Common, but this is a very nice one.

THIN PLANCHET 1820 N-13



345. 1820 N-13 R1 AU55. Large Date. Thin Planchet. Frosty steel brown with lustrous lighter brown toning in protected areas and delicate clouds of darker steel brown toning on the left side of the obverse. There is a touch of light friction on the highpoints and a thin diagonal nick in the center of the cheek. LDS. Struck on a defective planchet that is much thinner than normal on the left side causing severe weakness at stars 1-4 and TED STAT. Ex Chuck Furjanic 2/76-John D. Wright.

346. 1820 N-14 R5- AG3. Large Date. Sharpness VF20 but covered with uniform strong granularity. There is a rim nick at the T in UNITED and a spot of shallow verdigris at the E in STATES. Matte dark steel brown. The date and legends are clear, but this cent is scuddy.



347. 1820 N-15 R2 MS60. Small Date. Planchet Crack. Lustrous light bluish steel brown with hints of underlying very faded mint red in protected areas. There are a few trivial contact marks visible with a strong glass plus a small spot of darker toning in the center of the neck, but the unavoidable defect is a planchet crack at the rim over star 3, as struck. Here is a cent that makes the error collector happy and the type collector sad. MDS. Probably part of the Randall Hoard of mint state cents.



348. 1822 N-5 R3 VF30. Sharpness near EF40 with a small abraded spot in the field off the chin and a couple rim nicks at the bottom of the reverse. Glossy medium brown. MDS. Ex Stack's 10/30/41:121-Willard C. Blaisdell 9/76-Del Bland 2/80-Ed Jasper.



349. 1822 N-7 R3+ F15+. Sharpness VF25 with some extremely fine roughness on both sides, strongest at the T in CENT. No verdigris or significant marks. Glossy chocolate and steel brown with some reddish brown toning mixed into protected areas. Ex John Dillow 3/81-Ed Jasper.

350. 1822 N-7 R3+ VG7. A few points sharper with microscopic roughness under a glossy dark olive and steel brown patina. Some crud cake into protected areas and a few light contact marks on the rims. Ex Steve Ellsworth 9/20/97.



351. 1822 N-8 R4 VF30. Glossy chocolate and medium brown. The surfaces are smooth and very attractive, just a few trivial contact marks from choice. The best identifying mark is a small planchet chip, as struck, just right of the foot of the T in CENT. MDS. Ex Pine Tree Auctions 2/15/75 (as N-7)-C. Douglas Smith 4/80-Stu Hodge 7/84-Ed Jasper.

355. 1822 N-13 R5 VG7. A point or two sharper with extremely fine roughness and microscopic contact marks covering both sides. None of these defects is significant or distracting, but there are too many to ignore. Rather glossy steel brown and chocolate. Decent eye appeal for the grade. Ex Ed Jasper.

352. 1822 N-9 R5- G5. Sharpness F15 but lightly corroded with patches of stronger corrosion on the reverse. No verdigris; a rim bruise at star 6 and another at the stem tip are the only marks. Dark olive and steel with lighter highpoints. EDS.



356. 1822 N-13 R5 G4. The obverse is slightly nicer while the reverse is a bit weaker. Glossy chocolate and steel brown mottled with some lighter brown tones. The surfaces are smooth, and the only notable marks are a shallow planchet flake at the dentils left of star 7 and a small rim bruise at star 12. The date is strong but much of the legend outside the wreath is worn into the rim.

353. 1822 N-11 R1 VF35. Slightly sharper with a spot of very fine reddish chocolate verdigris between star 1 and the bust tip. Otherwise the surfaces are an attractive glossy light to medium brown with steel brown highpoints. A couple dull nicks over the right top of the N in ONE are the only contact marks worthy of mention. EDS. Ex Dr. George Ewing 7/78-Ed Jasper.

357. 1822 N-13 R5 AG3. Sharpness VG10 but heavily corroded. The date and legends are clear, but this is an ugly cent. Dull dark olive with some lighter highpoints.



358. 1823/2 N-1 R2 VG7. Overdate 3 over 2. Glossy chocolate brown with wisps of lighter brown toning on the reverse. A tiny rim bruise over the second S in STATES is the only notable mark. LDS. The overdate is still clear and the reverse is rotated 15 degrees CCW. Ex David Garvin (all proceeds to EAC).

359. 1824/2 N-5 R4+ G5. Overdate 4 over 2. Sharpness VG10 with several dull dents on the head plus a few light rim bruises, strongest at stars 1-3. One of the dents caused a slight bulge in the wreath under ME. Oddly enough, the surfaces are smooth and attractive, covered with glossy chocolate and medium brown toning. The overdate is clear.

354. 1822 N-11 R1 VF35. Sharpness EF40 or slightly better with a short, light horizontal hairline scratch on the eyebrow and a rim bruise under the stem tip. Glossy chocolate brown with some frosty lighter brown toning in protected areas. EDS. Ex George Ramont-Jules Reiver-David Garvin (all proceeds to EAC).



HIGH GRADE 1825 N-1



360. 1825 N-1 R4 EF45 (PCGS MS62BN). Glossy chocolate and light olive brown with frosty luster peeking through in the protected areas, especially on the reverse. The only marks are a small, dull nick that flattens the tip of the nose plus several very tiny ticks in the field to the left. The surfaces are mostly smooth and offer excellent eye appeal, but a strong glass reveals traces of extremely fine roughness in a few places, including the cheek and around star 5. Sharply struck MDS. There is some very light dirt in protected areas, and a bath could uncover more of the underlying mint luster.



361. 1825 N-6 R3 AU50. Frosty light steel brown with mint luster covering the protected areas and hints of underlying very faded mint color in a couple places. There are a few faint scuffs in the left obverse field and a very faint hairline from star 5 to star 7. LDS with an additional die crack from the bust tip into the field left of the date. Ex Foreman Rare Coins 6/88-March Wells, Superior 2/7/2000; 1863-Dr. Wallace Lee, Superior 5/25/03:697.



362. 1825 N-8 R3+ VF35+. Glossy steel brown and chocolate with frosty light golden brown toning in protected areas of the obverse. A light horizontal nick close under the N in CENT is the only significant mark. E-MDS. Excellent eye appeal for the grade. Ex Gordon Wrubel 5/82-Ed Jasper.

1825 N-10  
EX HOMER DOWNING



363. 1825 N-10 R3+ EF45+. Sharpness AU55 but there is a dull rim bruise at stars 2-3. Otherwise the surfaces and eye appeal are outstanding. Choice lustrous light to medium brown with frosty luster covering the fields and protected areas and traces of very faded mint color on the reverse. A small spot of darker olive brown toning shows in the field over star 1. MDS. A beautiful cent in spite of the defects, and it comes with a nice provenance as well. Ex Homer K. Downing 4/5/48-Willard C. Blaisdell 9/76-R. E. Nafziger, Jr., 1977 EAC Sale, lot 190-Lillian Willins 12/96-Tom Reynolds.

364. 1826 N-4 R2 VF30. Nice glossy chocolate brown with a swipe of darker olive brown toning under the E in CENT. Smooth and free of any notable contact marks. MDS, the reverse rotated 20 degrees CCW.

DOUBLE PROFILE 1826 N-5  
EX JACK BORCKARDT



365. 1826 N-5 R2+ EF45. Double Profile. Sharpness very close to mint state with a fine hairline scratch from the dentils over star 5 down to star 13 and another that bisects the reverse from top to bottom. Lustrous bluish steel brown and chocolate with splashes of reddish chocolate toning, mostly on the reverse at NITE. MDS. There is a double profile from the coronet tip down to the chin with additional doubling on stars 3-13 (all from die bounce). Ex Jack Borckardt (Fort Findlay Enterprises) 2/79-John D. Wright.



366. 1826 N-5 R2+ MS60 (NGC MS65BN). Double Profile. The obverse is frosty bluish steel brown while the reverse is frosty light brown with steel brown toning on the highpoints. There are traces of faded mint red in protected areas on both sides. The only marks of any consequence are some tiny specks of darker toning scattered about the obverse and a couple larger ones on the reverse, including one inside the C in CENT and another at the dentils over the O in OF. M-LDS with a strong double profile along the top of the head from the tip of the coronet to the right edge of the hair bun.

367. 1827 N-3 R2 VF20. Slightly sharper with a fine hairline scratch from the forehead down to the center of the cheek, plus some other minor contact marks of no significance. Glossy chocolate brown with some lighter brown toning on both sides, especially on the obverse. M-LDS.



368. 1827 N-3 R2 EF45. Frosty steel brown and chocolate with lustrous light steel brown toning covering the protected areas. No defects and outstanding eye appeal. LDS. Ex Gordon Wrubel 3/84-Ed Jasper.



369. 1827 N-7 R3 VF35. Close to EF40 but there is a dull nick in the hair under star 8 and a couple more on the top of the E in ONE. Glossy chocolate brown with frosty lighter brown in protected areas and some darker reddish chocolate toning on the reverse. MDS. Ex Dale Shaeffer 4/82-Ed Jasper.

370. 1827 N-8 R3 F15. Sharpness VF35 with faint hairline scratches covering both sides and a spot of greenish verdigris under the second S in STATES, plus tiny specks of similar verdigris elsewhere on the reverse. Slightly glossy dark chocolate brown with steel brown highpoints. MDS.



371. 1827 N-11 R1 MS62. Choice lustrous light bluish steel brown with underlying faded mint color in protected areas of the reverse. The surfaces are satiny and very attractive, just a couple small spots of darker toning from perfect. These include a speck of dark chocolate toning over star 4 and a larger one off the leaf tip under the U in UNITED. E-MDS, without crumbling at the forehead or nose. Removed from an NGC slab graded MS65BN (NGC label included). Ex Dennis Mendelson, Superior 2/91:839-Superior 2/92:1159-Dana Samuelson 6/93.

372. 1827 N-11 R1 VF30. Ten points sharper but cleaned and nicely retoned glossy light olive brown and chocolate, the obverse a few shades lighter than the reverse. A couple light contact marks on the cheek and chin plus a faint hairline in the field before the nose. LDS with crumbling at the forehead and under the tip of the nose. Ex Willard C. Blaisdell 9/76-Del Bland 4/79-Ed Jasper.



376. 1828 N-12 R3+ F12. Glossy steel brown and chocolate with some small spots of reddish chocolate toning above ONE. A thin hairline scratch right of the D in UNITED is the only notable mark.

373. 1828 N-3 R2 VF25. Five points sharper with some faint vertical hairline scratches at the tip of the nose and in the field close before the face. Otherwise the surfaces are smooth and offer excellent eye appeal for the grade. Glossy chocolate and steel brown with frosty golden light brown in protected areas. MDS.



377. 1828 N-3 R3 F15+. Small Letters Reverse. Ten points sharper with microscopic pitting on the lower third of the obverse. Otherwise a small rim nick at the E in STATES is the notable defect. Lightly cleaned and retoned a mostly glossy medium brown and chocolate. Some very faint brushmarks show in the field above the head and around the date, possibly remaining from the light cleaning. LDS. Ex Ronnie Adam, Superior 9/04:845.

374. 1828 N-4 R4 VG8. Sharpness F15 but covered with tiny nicks, none significant but far too many for the sharpness grade. Lightly cleaned and recolored glossy medium brown and light olive with a splash of darker chocolate toning at the bottom of the reverse, and this darker patch contains microscopic roughness and scratches.



BEAUTIFUL 1829 N-4

378. 1829 N-4 R4 VF35. Five points sharper with a fine planchet lamination in the lower curls fading out as it reaches the dentils under star 13. Otherwise this cent is choice with outstanding surfaces and eye appeal. Frosty medium brown and chocolate with ample amounts of satiny mint luster covering the fields and protected areas. As usual, the strike is not perfect with weakness at the top of the head and buns, on the lowest curl, and on several leaves of the wreath. The surfaces and actual wear are consistent with a higher grade cent, but the strike weakness has an impact. Still, this is a beautiful cent. Ex Tom Reynolds 1994.

375. 1828 N-11 R2 EF40. The obverse is glossy medium brown with steel brown highpoints, and the reverse is glossy chocolate brown with frosty lighter steel brown toning in protected areas. A thin nick on the jawline at the curl and a dull nick at the bottom of the neck are the only marks. E-MDS. Ex Dr. George Ewing 7/78-Ed Jasper.



379. 1829 N-5 R3+ VF20+. Small Letters Reverse. Five points sharper but lightly cleaned and retoned glossy dark steel brown with frosty light brown toning in protected areas. A small spot of very fine reddish struck dust in the field under star 8 is the only mark. E-MDS, and nicely struck, especially for a small letters variety. Ex Bowers & Merena 12/4/03:160.



380. 1829 N-7 R3 VG10. Wheelspoke Reverse. Sharpness VF20 with three dull digs under star 6 and several fine hairline scratches on both sides. Lightly cleaned and retoned glossy steel brown and chocolate with lighter coppery brown toning on a few of the highpoints. MDS with 4 spoke breaks on the reverse.



381. 1829 N-8 R1 EF45. Glossy bluish steel brown and chocolate. The fields and protected areas are covered with attractive satiny mint luster from fine die flowlines. Excellent eye appeal. The only marks are a couple very tiny pinpricks under star 5 and another in the field near the forehead. LDS. Ex Del Bland 5/78-Ed Jasper.

ATTRACTIVE 1829 N-9



382. 1829 N-9 R4 VF35. Small Letters Reverse. Five points sharper with a small rim nick under star 1 and some faint vertical hairline scratches from the C in CENT to the O in ONE. There is a splash of dark reddish chocolate toning at UNIT and ON, and the reddish area at UNIT contains traces of very shallow verdigris, possibly removable. Otherwise the surfaces are a very attractive glossy medium brown and chocolate. The obverse fields are satiny and very attractive. Should benefit from a bath to remove loose crud from protected areas of the reverse. LDS. The strike isn't perfect but it's not bad for a small letters reverse type, with minor weakness in the usual places.



383. 1830 N-1 R1 EF45. Five points sharper with a light vertical hairline scratch in the field under star 5. Otherwise the surfaces and eye appeal are excellent. Glossy medium brown delicately mottled with some darker steel brown tones. The fields and protected areas are covered with attractive flowline luster. MDS. Ex Tom Reynolds 4/95-Ed Jasper.

384. 1830 N-2 R2+ VG10. Slightly sharper with extremely fine roughness under a slightly glossy olive and steel brown patina. A light hairline scratch on the cheek and a small rim nick over star 6 are the notable marks. Scarce EDS, the obverse die crack very light. Ex Madison Coin Box 4/76-John D. Wright.



385. 1830 N-2 R2+ AU50. Rotated Reverse. Choice glossy steel brown and chocolate with frosty mint luster covering the fields and protected areas. The fields are satiny and the only mark is a short, very fine hairline scratch on the neck near the throat. LDS, the reverse rotated 30 degrees CCW. The stars are softly struck, as always. Ex Ed Jasper.



386. 1830 N-3 R3 VG8. Off Center. Glossy chocolate brown. Smooth and attractive, a light rim bruise at star 4 and another over the hairbuns are the only notable marks, and neither is at all distracting. Struck 20% off center to K-2. Excellent eye appeal for the grade and a very nice mint error. Ex Ferris Stamp & Coin 12/84-John D. Wright.

HIGHER GRADE 1830 N-11



387. 1830 N-11 R5 VF20. Slightly sharper with microscopic roughness under the mostly glossy olive and dark steel brown patina. No verdigris, and the only marks are a trio of tiny pinpricks at the top of the obverse and a pair of tiny, very light hairline scratches on the cheek and jaw near the earlobe. Not perfect but still one of the nicer examples of this rare die variety. Ex 1997 EAC Sale, lot 253-Ed Jasper.



388. 1831 N-2 R2+ EF40. Five points sharper with a small rim bruise at star 1 and another right of the date. Otherwise the surfaces are very nice. Glossy chocolate brown with very delicate woodgrained steel brown toning on the obverse. Frosty flowline luster covers the protected areas. LDS with several small rim cud breaks on the obverse with a larger one at star 11. Ex London 11/46-Willard C. Blaisdell 9/76-R. E. Nafziger, Jr.-Del Bland-Ed Jasper.



389. 1831 N-2 R2+ MS60. Partial Double Profile. Frosty bluish steel brown and chocolate with attractive satiny mint luster covering both sides. There is a thin streak of darker olive brown toning slanting down through the right corner of the eye and a shallow planchet flake under the O in ONE, as struck. Otherwise this cent is choice. LDS with small rim cud breaks on the obverse, including a larger one at star 11. There is a fine double profile on the curls, ERTY, and stars 9-13. Ex Abner 1957-R. E. Nafziger, Jr., 1989 EAC Sale, lot 320-R. S. Brown, Jr., Superior 1/27/96:568.



390. 1831 N-2 R2+ F12. Split Planchet. The reverse is present but the obverse side of the planchet has separated leaving a very thin "half cent." Glossy chocolate brown. Light rim bruises at the U and first T in STATES are the only marks. Ex Allen's 11/90-John D. Wright.



394. 1831 N-6 R1 AU50. Prooflike Obverse. Reverse Chatter. Glossy light brown with steel brown toning on the highpoints. No notable marks, just light friction on the highpoints. Nicely struck EDS with prooflike obverse fields and strike doubling on much of the reverse from die bounce.



391. 1831 N-4 R3 VF25+. Close to VF30 with a few too many light contact marks to hold the higher grade, none notable or distracting at all. Glossy light to medium brown with delicate, small splashes of darker steel brown on both sides plus a small spot of reddish chocolate toning under star 10. MDS. Ex John D. Wright-Ed Jasper.



395. 1832 N-2 R3- VF35. Ten points sharper and cleaned and retoned glossy dark bluish steel brown with frosty light brown in protected areas. There are some faint hairline remaining from the cleaning, a collection of very tiny ticks in the field under star 8, and a small spot of fine carbon over the right top of the N in ONE. MDS. Ex David Garvin (all proceeds to EAC).



392. 1831 N-4 R3 VF20. Five points sharper with a rim bruise under star 13 and some tiny nicks scattered over both sides, none notable. Glossy medium brown and chocolate. MDS. Ex Bowers & Ruddy 12/4/74-William A. Weimer-Pine Tree Auctions 3/6/76 (bought back)-David Garvin (all proceeds to EAC).



396. 1833 N-1 R2 AU50+. Frosty bluish steel brown and chocolate with satiny mint luster covering both sides. No defects. A choice example with excellent eye appeal. M-LDS. Ex Thomas L. Elder 3/20/1918-408-Henry C. Hines-Floyd T. Starr, Stack's 6/13/84-269-Wes Rasmussen, 1998 EAC Sale, lot 290-Ed Jasper.



393. 1831 N-5 R4 F12. Sharpness VF20 but slightly bent, and there is a shallow depression in the field close before the forehead. A strong rim nick at the bottom of the reverse is the only distracting mark. Glossy chocolate brown. Ex Ed Jasper.



397. 1833 N-2 R2 MS60. Double Profile. Rotated Reverse. Lustrous light bluish steel brown with faded mint color remaining in protected areas. The only marks are a small spot of darker toning on the right side of the E in LIBERTY, one in the field left of star 8 near the dentils, and another in the dentils over star 7. Nicely struck E-MDS with doubling on the eye, chin, ear, and LIBERTY. In addition, the reverse is rotated 35 degrees CW. Ex Mid-American Rare Coins Auction 9/30/89:1317.



398. 1833 N-2 R2 EF45. Double Profile. Frosty light brown with a few small spots of darker toning on the rim at stars 9-12. A dull, light nick on the jawline is the only contact mark of any consequence. M-LDS with a clear double profile from the forehead down to the chin. Ex 1984 EAC Sale, lot 295-1995 EAC Sale, lot 352-John D. Wright.



399. 1833 N-3 R1 AU55. Frosty light brown with light steel brown toning on the highpoints. Satiny mint luster covers both sides. No defects other than a small rim nick at the first A in AMERICA. Just a trace of rub on the highest points from mint state. MDS.



400. 1833 N-3 R1 EF45. Sharpness AU55 with microscopic specks of very fine verdigris in splashes of dark chocolate toning on otherwise lustrous reddish brown and chocolate surfaces. In addition, there is a shallow low spot around ON and CE caused by debris (grease) on the die. The fields are mostly satiny and attractive, but the darker areas do detract a bit. MDS. Ex Gordon Wrubel 6/79-John D. Wright.





401. 1833 N-5 R1 AU50. Repunched 8. Slightly sharper with a small spot of greenish verdigris under the second S in STATES. Otherwise the surfaces are smooth and attractive, free of any defects. Lustrous bluish steel brown and chocolate. M-LDS. The repunching on the top of the 8 is still clear. Ex David Garvin (all proceeds to EAC).

402. Trio of Cents, 1833-1856. 1833 N-5 R1 VF20. LDS. 1834 N-2 R1 VF25. EDS. Sharper but lightly corroded. 1856 N-3 R1 VF25. LDS with a cud break at stars 12-13, but the cud is weak. Lot of 3 coins.



403. 1833 N-6 R1 VF35. Ten points sharper but lightly cleaned and retoned glossy bluish steel brown with faded artificial red in protected areas, mostly on the reverse. No stains, spots, or marks. Just needs a proper retoning. MDS. Ex Lester Merkin 3/67-John D. Wright.

404. 1834 N-1 R1 EF40. Ten points sharper but cleaned and retoning glossy golden tan and light brown with delicate overtones of sea-green. No defects other than the cleaning, which screams for a good retoning. MDS. Ex David Garvin (all proceeds to EAC).

405. 1834 N-2 R1 VF35. Double Profile. Slightly sharper with a few shallow digs at the top of star 11. Glossy dark chocolate brown with medium brown toning on the highpoints. MDS with a strong double profile from the forehead down to the chin.



406. 1834 N-2 R1 VF35+. Double Profile. Nice glossy medium brown. No defects other than a tiny rim nick over star 10. MDS with a strong double profile from the top of the forehead down to the chin. Ex Tom Reynolds 6/90-John D. Wright.

407. Group of 6 Cents, 1834-1838. 1834 N-3 R1 VG8. Double Profile. 1835 N-7 R1 F12. 1835 N-13 R4 AG3. 1837 N-10 R1 VG10. 1838 N-2 R1 F15. 1838 N-6 R1 F12. A couple are slightly sharper with minor defects. Lot of 6 coins.



408. 1834 N-4 R2 EF40+. Large 8 with Small Stars. Doubled Stars and Reverse. Glossy light to medium brown with a splash of reddish chocolate toning covering the face. A tiny tick in the middle of the jawline and a small planchet flake left of star 1 are the only marks. Well struck EDS with doubling on the stars and much of the reverse (from die bounce). Ex George Ramont-Bill Noyes-1984 EAC Sale, lot 304-John D. Wright.



409. 1834 N-5 R5+ F15. Large 8 and Stars with Small Reverse Letters. Glossy dark olive and steel brown. There is extremely fine roughness well hidden under the glossy, relatively thick patina. No notable verdigris or contact marks other than a very tiny rim nick left of the date. MDS. Ex Jim Long.

410. 1835 N-1 R1 VF30. Large 8. Ten points sharper with a small patch of very light corrosion at the 18, a wide streak of even lighter roughness down from OF to the stem tip, and a short scratch down from the stem to the rim below. Mostly glossy chocolate and steel brown with darker olive and chocolate toning in the roughened areas. EDS. Ex J's Coins 9/83-John D. Wright.



411. 1835 N-2 R3 EF40. Glossy light olive and chocolate brown with delicate overtones of bluish steel on the obverse and frosty mint luster in protected areas of the reverse. Smooth and very attractive for the grade, free of any notable defects. The best identifying mark is a very light hairline scratch down from the base of the 3 to the dentils below. LDS. Ex International Coins 11/79-John D. Wright.

BOLD DOUBLE PROFILE 1835 N-5



412. 1835 N-5 R2 MS60+. Bold Double Profile. Lustrous light olive and chocolate brown with traces of golden tan toning in protected areas of the reverse. The surfaces are covered with attractive satiny mint luster and the eye appeal of this cent is excellent. The only marks are an extremely faint scuff on the cheek and a few microscopic ticks in the field above the inner hairbun. MDS with a very strong double profile from the top of the coronet down to the chin with additional double and triple outlines on stars 7-12. A beautiful cent, close to choice MS63, and a great example of a double profile strike.

413. 1835 N-5 R2 VF30. Glossy chocolate brown with frosty flowline luster covering the fields and protected areas. There is a dull nick on the coronet above the L, a smaller one in the curl before the ear, and a larger one over the E in ONE. MDS. Ex Don Valenziano 4/90-John D. Wright.



414. 1835 N-6 R1 EF45. Slightly sharper but there are microscopic traces of reddish crud on the reverse. Frosty light steel brown with splashes of reddish olive toning on both sides, strongest on the reverse where the traces of crud can be found. The fields still display lots of flowline luster, but the splashes of darker toning are a distraction. A small rim nick at star 10 is the only notable contact mark. MDS. Ex McLaughlin & Robinson Auctions in 1980 something (so much for great record-keeping, John)-John D. Wright.

OFF CENTER 1835 N-9



415. 1835 N-9 R4+ F12 (PCGS VF30). Off Center. Slightly sharper but cleaned and retoned a slightly glossy dark steel and olive brown with hints of underlying very faded reddish brown toning on both sides. The planchet displays some extremely faint roughness and there are several barely visible striations on the reverse running NW-SE. No verdigris or contact marks, but there are a couple shallow planchet chips at the R in AMERICA and at the rim over that M, as struck. EDS. Struck at least 15% off center to K-7.5 leaving only the very tops of the 835 on the planchet. This one deserves a better retoning. Ex 2002 ANA Sale, Superior, 8/1/02:2523.

PROOFLIKE 1835 N-14  
EX WILLARD BLAISDELL - R. E. NAFTZGER



416. 1835 N-14 R2 MS60. Prooflike. Glossy dark bluish steel brown and chocolate with traces of faded mint color in protected areas and iridescent bluish purple overtones covering the fields, especially on the obverse. The only marks of any consequence are some extremely faint hairlines on the obverse and a single one under NE in ONE. EDS with hard, reflective fields, the mirrors deepest on the obverse. Excellent eye appeal for the grade. Ex New Netherlands Coin Co. 12/7/57:1567-Willard C. Blaisdell 9/76-R. E. Naftzger, Jr.

DOUBLE STRUCK BROCKAGE MAKER  
1835 N-15



417. 1835 N-15 R2 F15. Double Struck. Obverse Brockage Maker. Five points sharper with some small contact marks and microscopic roughness scattered about both sides, including a dull pinprick over the left top of the T in CENT (for the off-center impression). Rather glossy chocolate and olive brown, the obverse with woodgrained mixing of the tones. Double struck. The initial strike was properly centered but the struck coin failed to eject completely and it was struck a second time about 45% off center on the reverse. The obverse was impressed into a new blank planchet during the second strike creating an off-center obverse brockage on the other planchet. A nice example of a multiple-error strike. Ex David C. Stagg III 8/82-John D. Wright.



418. 1836 N-1 R1+ EF40. Ten points sharper with a splash of dark olive and steel toning at stars 7-9, and this patch contains some extremely fine porosity. The rest of the planchet is a frosty light to medium brown with a couple splashes of darker steel and reddish chocolate toning on the reverse. An arc-shaped struck-through line in the field right of star 4 is the only other mark worthy of mention. LDS. Ex Chris McCawley 4/90-John D. Wright.



419. 1836 N-2 R2 EF40. Sharpness EF45 with a planchet chip on the rim under star 1 and a couple small rim nicks at S-OF; plus a few dull nicks scattered about both sides. Glossy light steel brown with delicate splashes of darker steel brown toning on both sides. LDS. Ex Gordon Berg 1/88-John D. Wright.



420. 1836 N-3 R1 AU50. Frosty light to medium brown with satiny mint luster covering the fields. A very tiny nick on the chin and a small spot of darker toning right of the D in UNITED are good identifying marks. LDS. Ex Bowers & Merena 6/24/96.



421. 1836 N-3 R1 AU50. Glossy steel brown and chocolate with hints of underlying very faded mint color on the reverse. No defects, a speck of darker toning under the right end of the line under CENT is the best identifying mark. LDS. Ex David Garvin (all proceeds to EAC).



422. 1836 N-5 R3 AU50. Glossy steel brown and chocolate with underlying satiny mint luster covering the fields. A pair of tiny ticks under star 4 and a light horizontal nick in the field before the forehead are the notable marks, and they are trivial. M-LDS with a rim cud break at star 1. Ex Chuck Furjanic-Del Bland-Ed Jasper.

PERFECT DIE STATE 1836 N-6



423. 1836 N-6 R2 VG10. Without Obverse Cud. A couple points sharper with some light contact marks scattered about both sides, including a dull diagonal nick over the O in ONE. Lightly cleaned and retoned glossy light olive brown and chocolate. Extremely rare early die state, before the cud break occurs at the dentils over star 8.



424. 1836 N-6 R2 EF45+. Close to AU50 but there are a few too many light contact marks on the cheek for the higher grade, plus another small nick in the field before the mouth. Attractive glossy medium brown with frosty sea-green toning in protected areas of the obverse. MDS with hard, slightly reflective fields and a strong cud break at the dentils over star 8. Ex Bob Matthews, Superior 5/28/89:783.

425. 1837 N-1 R3 VF35. Five points sharper with a dull struck-through line (caused by a thread or wire on the die) in the field under star 4, plus a few light contact marks around stars 2 & 3 and a nick over star 12. Glossy medium brown with frosty flowline luster covering the protected areas. The struck-through line is a mint-caused defect, but it still detracts from the eye appeal. MDS. Ex NOISE show 6/86-John D. Wright.



426. 1837 N-2 R2 EF45. Glossy light to medium brown with underlying frosty mint luster in protected areas. The only notable defect is a spot of reddish verdigris at the dentils over star 8. MDS, the internal cud break over star 4 slightly raised. Ex Chuck Furjanic-Jack Collins-Del Bland 7/78-Ed Jasper.

427. 1837 N-4 R2 VF35. Slightly sharper with a spot of dark olive verdigris over star 7 and a dusting of very fine carbon covering the first T in STATES. Otherwise the surfaces are an attractive glossy light brown with light steel brown highpoints and a swipe of reddish brown toning at stars 5-6. MDS. Ex 1978 EAC Sale, lot 125-David Garvin (all proceeds to EAC).



428. 1837 N-6 R2 AU50. Sharpness closer to mint state but the obverse is covered with small spots of dark olive toning over an otherwise attractive lustrous medium brown with light bluish steel overtones. The reverse is not so afflicted and affords excellent luster and eye appeal. No corrosion, verdigris, or notable marks other than a few tiny ticks in the field before the face. EDS. Ex C & O Coins 10/83-John D. Wright.



429. 1837 N-6 R2 MS60 (NGC MS63BN). Frosty light to medium steel brown with bluish steel overtones covering the reverse. There are some small, delicate splashes of darker steel brown toning around stars 6-13. A faint hairline scratch between stars 7 & 8 and another left of the O in ONE are the only contact marks. MDS. Ex Tom Reynolds 1993-Dr. Wallace Lee, Superior 5/25/03:844.

430. 1837 N-8 R1 EF40. Five points sharper with tiny rim nicks at stars 4-5 and over ER in AMERICA. Frosty medium brown with steel brown highpoints and hints of reddish toning at the eye and in the center of the neck. LDS, Newcomb's #7. Ex McCawley & Grelman Auctions 9/92:148-John D. Wright.



431. 1837 N-8 R1 AU50. Slightly sharper with a few short, light pinscratches over star 10. Glossy medium brown and chocolate with hints of very faded mint color in a couple protected areas. EDS. Ex Joe Lepczyk MBS 7/84-John D. Wright.



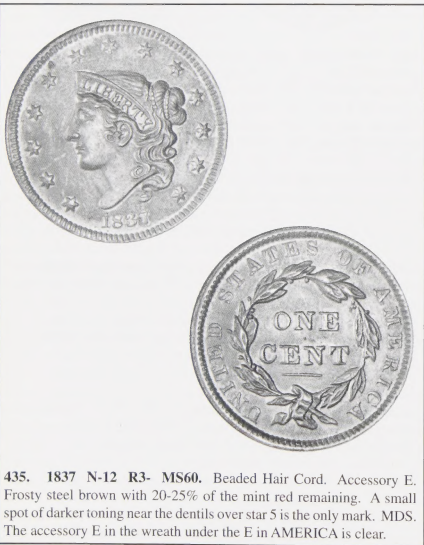
432. 1837 N-9 R1 EF45. Beaded Hair Cord. Glossy light to medium brown with chocolate brown highpoints. Satiny luster covers the fields and protected areas. An attractive cent, free of any notable defects. M-LDS. Ex Jack Borkardt (Fort Findlay Enterprises) 2/79-John D. Wright.



433. 1837 N-10 R1 AU58. Beaded Hair Cord. Lustrous bluish steel brown and chocolate. No spots or other defects, just a hint of friction on the highest points. Satiny and very attractive. M-LDS. Ex David Garvin (all proceeds to EAC).



434. 1837 N-10 R1 MS60. Beaded Hair Cord. Lustrous bluish steel brown and chocolate with traces of faded mint red on both sides, especially on the reverse. The only defects are three mint-made planchet fissures. These are one tiny one at the base of the 7, another right of the 7, and a longer one slanting down through the ST in STATES. LDS with rim cud breaks from the 8 over to star 13. Ex Tom Reynolds.



435. 1837 N-12 R3- MS60. Beaded Hair Cord. Accessory E. Frosty steel brown with 20-25% of the mint red remaining. A small spot of darker toning near the dentils over star 5 is the only mark. MDS. The accessory E in the wreath under the E in AMERICA is clear.

436. 1837 N-12 R3+ EF40. Beaded Hair Cord. Accessory E. Frosty chocolate with delicate overtones of bluish steel and a swipe of darker steel toning across the face to stars 3 & 4. Close to EF45 but there are some very light contact marks on the obverse, mostly in the field before the portrait, plus a tiny rim nick at star 12. LDS. The accessory E is clear. Ex Ed Hipps 1/95-John D. Wright.



437. 1837 N-13 R2+ MS60+. Lustrous dark bluish steel with faded mint red in protected areas of the reverse. The surfaces are satiny and the eye appeal is excellent. The only defect is a spot of very fine reddish brown verdigris in the curl over star 13. LDS. Removed from a PCGS slab graded MS64BN (PCGS label included).



438. 1837 N-16 R3+ AU50+. Glossy golden light brown and medium brown with traces of faded mint color on both sides. A small spot of darker chocolate brown toning in the field over the bust tip is the best identifying mark. E-MDS, but it does show many small but clear rim cud breaks on the left side of the reverse.



439. 1838 N-1 R1 AU50+. Glossy medium brown with bluish steel overtones in the fields. No spots, a faint scuff in the field right of star 5 and a tiny nick under star 8 are the only marks. MDS. Ex William E. Leppard 4/63-John D. Wright.

440. 1838 N-2 R1 VF30. Ten points sharper with light rim bruises at stars 2, 6, and 11. Otherwise this cent is an attractive glossy medium brown with frosty golden light brown toning in protected areas. EDS. Alpine Coins 7/85-John D. Wright.

441. 1838 N-3 R1 EF45. Five points sharper with a collection of dull, light nicks under star 5. Glossy medium brown and chocolate with dark olive brown spots sprinkled over the obverse, the largest spot on the lower edge of the bust. The protected areas are covered with satiny luster. EDS. Ex John Morton-1988 EAC Sale, lot 321-John D. Wright.



442. 1838 N-3 R1 MS60. Frosty light bluish steel brown with attractive, satiny surfaces. The only notable mark is a mint-made struck through line in the field before the lips. M-LDS. Ex McCawley & Grelman Auctions 10/2/93:193.



443. 1838 N-4 R2 MS60+. Lustrous bluish steel brown and chocolate with faded underlying mint red in protected areas. The surfaces are satiny and the eye appeal is excellent. The only defects, and they are trivial, are some extremely faint hairlines in the field before the portrait and a tiny nick close over star 1. M-LDS with strong rim cud breaks under the 83 and at star 12.

444. 1838 N-6 R1 VF35. Slightly sharper with a rim nick at star 13 and another at the M in AMERICA. Glossy chocolate brown with splashes of darker chocolate toning at TES and AM. LDS. The dies have been heavily lapped and the date is weak. Ex Edward H. Schwartz, Abe Kosoff auction 10/11/61:776-Willard C. Blaisdell 9/76-R. E. Nafziger, Jr.-Del Bland-Howard Whitaker 5/82-John D. Wright.



445. 1838 N-7 R1 AU58. Lustrous dark bluish steel and chocolate with hints of very faded mint color on the reverse. Satiny and attractive, very close to mint state. The notable marks are a very faint hairline under star 2 to the throat and a small rim nick at the A in STATES. E-MDS. Ex Jim Frans 10/87-John D. Wright.



446. 1838 N-8 R1 AU50. Prooflike. Ten points sharper but lightly cleaned and retoned glossy bluish steel and light olive brown. There is a nick in the field right of star 3 and a small, very lightly abraded spot above the 3 in the date. EDS with prooflike fields, especially on the obverse. Might deserve a slightly higher net grade if given a more attractive retoning. Ex T & W Coins 6/84-John D. Wright.

447. 1838 N-10 R1 EF45. Frosty medium brown and chocolate, the reverse a darker shade of bluish steel and chocolate. A splash of darker olive brown toning at ERT is the notable mark. LDS, the AM crack strong. Ex Ed Hips 1/99-John D. Wright.

448. 1838 N-12 R2 VF30+. Sharper by at least 5 points with a dull scratch in the field under star 8, a vertical nick just right of the upper lip, and a few other light contact marks elsewhere on the obverse. Frosty medium brown with reddish brown toning at MERICA. E-MDS. Ex Willard C. Blaisdell 9/76-Del Bland-John D. Wright-Howard Whitaker 5/82-John D. Wright.

449. 1839 N-2 R2 VF30. Head of 1838. Sharpness EF45 with several rim nicks on both sides, strongest at stars 2 & 9. Otherwise the surfaces are an attractive lustrous chocolate brown with satiny surfaces. Too bad. MDS. Ex ISNA show 6/90-John D. Wright.

450. 1839 N-3 R1 VF35+. Head of 1838. Sharper by at least 5 points with a rim bruise at star 8. Otherwise very nice. Frosty medium brown and chocolate with peeps of faded mint red remaining on the reverse and satiny luster covering the fields. In fact, this one might deserve a higher net grade. MDS. Ex Norm Pullen 4/83-John D. Wright.

451. 1839 N-4 R1 EF40. Silly Head. Very slightly sharper with a faint, dull hairline scratch in the field close before the nose. Glossy bluish steel brown and chocolate, the obverse possibly recolored but the color and surfaces are quite attractive. MDS. Ex Paul Padgett 6/82-John D. Wright.

452. 1839 N-5 R2 VF30. Booby Head. Ten points sharper with a group of dull hairline scratches at stars 6-7 and a small rim bruise under the U in UNITED. Glossy reddish chocolate and medium brown. MDS. Ex 1976 EAC Sale, lot 2279-J. R. Grellman 5/81-John D. Wright.

453. 1839 N-6 R2 VF30. Booby Head. Sharpness AU50 with some very fine pin scratches in the field before the portrait, a horizontal nick under the eye, and a couple dozen strong pinpricks inside the wreath. Frosty medium brown with satiny luster covering the protected areas. LDS. Ex Lester Merkin 3/69-John D. Wright.



454. 1839 N-7 R2 EF45. Booby Head. Glossy medium brown delicately woodgrained with some darker steel brown tones on the upper portion of both sides. There is a diagonal nick in the center of the jawline and a tiny, very faint but fresh scratch in the center of the cheek. LDS with rim cud breaks at stars 11-13. Ex Delaware Valley Coins & Stamps 5/82-John D. Wright.

455. 1839 N-8 R1 VF30. Head of 1840. Glossy mottled mix of chocolate and darker olive brown. There is a dull nick on the tip of the chin and a dull rim nick right of star 9. E-MDS. Ex David Garvin (all proceeds to EAC).

456. 1839 N-9 R2 VF35. Silly Head. Sharpness EF40 with tiny nicks scattered over the reverse, none notable but too many to ignore. Frosty steel brown and chocolate. The obverse is quite nice with the luster and eye appeal of an EF45. MDS. Ex David Garvin (all proceeds to EAC).

457. 1839 N-12 R4+ G6. Booby Head. Glossy medium brown. A light vertical scratch in the hair under star 7 is a good identifying mark. Just a worn cent. E-MDS with a die crack from the dentils to star 4.

458. 1839 N-12 R4+ G4. Booby Head. Glossy medium brown. A short scratch just left of star 13 is the only notable mark. Another example that's just well worn. The date is clear but some of the stars are weak while the reverse is clearly better, close to G6. MDS with a die crack through star 4 to the nose.

459. 1839 N-12 R4+ G5. Booby Head. Sharpness VG10 but lightly corroded and slightly bent. There is a strong rim dent at stars 7-8 and a lighter one at stars 12-13. Slightly glossy dark olive and steel, nearly black. LDS with a bisecting obverse crack, the extension from the inner curl to the dentils under star 11 clear.

460. Pair of Cents, 1839 & 1855. 1839 N-13 R2 F12. Booby Head. E-MDS. 1855 N-8 R2 VF30. Ten points sharper but cleaned and retoned. MDS. Lot of 2 coins.

461. 1839 N-14 R3 VF30. Booby Head. Ten points sharper but cleaned and retoned glossy olive and dark chocolate brown with medium toning in the obverse fields. There are a half dozen rim nicks on the obverse, strongest at stars 4 & 12, plus a few more on the upper part of the reverse. MDS. Ex John Groot 3/74-John D. Wright.

462. Blank Planchet with Upset Rims (stage II) for 1835-43 Cents VF30. Glossy chocolate brown with the usual pre-striking nicks and imperfections. The rims are relatively narrow compared to those for Mature Head (1843-1857) cents. Diameter is 28.0 mm and the weight is 165.6 grains. Ex Superior 9/13/04:1034-William Chappelov.

463. 1840 N-2 R2 VF25. Small 8 over Large 8. Slightly sharper with small patches of fine verdigris on both sides, the largest of these close under star 9. Rather glossy chocolate brown mottled with dark chocolate and olive. MDS. The repunched 18 is clear. Ex David Garvin (all proceeds to EAC).



464. 1840 N-6 R1 AU55. Large Date. Repunched 40. Mint state sharpness but dipped and retoned a frosty light sea-green and golden tan with slightly faded red on both sides. The only marks are a pair of tiny specks of dark toning at the dentils under the 4 and another in the center of the cheek. LDS, die state c. The repunching on the 40 is dull but still visible. Ex Del Bland 8/82-John D. Wright.

465. Group of 5 Late Date Cents, 1840-1845. 1840 N-6 R1 VF20. MDS. 1841 N-3 R2 VF25. MDS. 1842 N-6 R1 VG10. MDS. 1843 N-2 R1 F15. M-LDS. 1845 N-12 R3 VF30. MDS. A decent group, all glossy brown or chocolate. Lot of 5 coins.



FOURTH FINEST KNOWN 1840 N-8



**466. 1840 N-8 R1 MS63 (NGC MS63RB).** Large Date. Mint red fading to steel brown, about half the mint color remaining, mostly on the reverse. There are traces of an old fingerprint in the field at stars 10-13 and a spot of reddish carbon near the dentils just past the second A in AMERICA, plus a smaller one over that M. LDS, die state d, with a series of strong rim cud breaks from star 8 around to under star 13. A choice example, tied for CC#4. Ex Bowers & Merena Rare Coin Review Spring 2002.

**467. 1841 N-3 R2 EF40.** Choice glossy chocolate brown with underlying frosty mint luster covering the fields and protected areas. Excellent eye appeal, nearly flawless. The best identifying marks are a tiny, faint vertical hairline scratch under star 8 and a hint of darker steel brown toning on the face left of the eye. LDS. Ex Peachtree Coin 5/63-John D. Wright.

FIFTH FINEST KNOWN 1843 N-3



**468. 1843 N-3 R3+ MS60 (NGC MS64BN).** Frosty bluish steel brown with 10% of the slightly faded mint red remaining, mostly on the reverse. There are two thin nicks on the cheek left of the earlobe, a faint scuff under the N in CENT, and a carbon spot on the rim under the ribbon end. The surfaces are satiny and lustrous. MDS, die state b. ER in AMERICA are softly struck. CC#5.

**469. 1843 N-5 R1 EF40.** Mature Head. Glossy chocolate brown with frosty flowline luster in protected areas. A small splash of slightly darker toning in the field under star 8 and a very small rim bruise under the stem tip are the only notable marks. MDS, die state b. Ex David Garvin (all proceeds to EAC).

FOURTH FINEST LATE DIE STATE 1844 N-3



**470. 1844 N-3 R2 MS60 (NGC MS64RB).** Mint red fading to steel brown, nearly half the mint color remaining. There are faint traces of an old fingerprint in the field at stars 7-10 and a thin planchet lamination near the dentils over star 4. The lamination is covered with a slightly darker tone of steel brown. LDS, die state e, with a strong rim cud break from star 9 down to well past star 10. Softly struck in the centers, as usual for the later die states of this variety, but this one is a bit flatter than most. Tied for CC#4 of those known with the large rim cud.

BORDERLINE MINT STATE 1844 N-7



471. 1844 N-7 R2+ AU58. Mint state sharpness but lightly cleaned and retoned glossy olive and dark chocolate brown with hints of underlying very faded red on the reverse. The fields are satiny and the only marks are traces of an old fingerprint on the lower part of the neck and in the field above star 2. EDS, die state a.

472. Group of 5 Late Date Cents, 1845-1854. 1845 N-5 R1 F15. 1850 N-21 R2+ VF25. LDS. 1851 N-20 R3+ VF30. M-LDS (old N-28). 1853 N-8 R3 VF30. MDS. 1854 N-9 R2 VF30. Dartboard Obverse variety. MDS. Some are sharper with defects. Lot of 5 coins.

473. Trio of Slabbed Late Dates. 1845 N-6 R2 ANACS AU50 (VF35, MDS). 1850 N-18 R4 ANACS VF30 (F15, MDS). 1853 N-5 R2- ICG EF40 (VF30, E-MDS). A decent group, the last sharper with some rim bruises. Lot of 3 coins.

474. Group of 6 Late Dates, 1845-1847. 1845 N-12 R3 VG10. MDS. 1846 N-11 R1 VF35. Medium Date. EDS. 1846 N-18 R1 VF25. MDS. 1847 N-35 R3+ F15. MDS. 1847 N-37 R1 F15. MDS. 1847 N-38 R1 VF35. MDS. A couple are very slightly sharper with minor defects. Lot of 6 coins.

475. Group of 4 Late Dates, 1845-1848. 1845 N-13 R2+ VF30. E-MDS. 1846 N-5 R2 VF35. MDS. 1847 N-3 R3 VF30. Repunched Date. E-MDS. 1848 N-16 R2 VF30. EDS. A couple are slightly sharper with minor defects. Lot of 4 coins. All are ex Jules Reiver-David Garvin (all proceeds to EAC).

476. 1845 N-15 R4 VF20. Glossy medium brown with frosty light brown in protected areas. A small pinprick under star 5. LDS, die state b, with the coronet tip softly struck.

477. 1846 N-1 R1 VF35. Repunched 18. Slightly sharper with a small carbon spot on top of the E in CENT. Otherwise this cent is an attractive glossy medium brown with frosty lighter brown covering the protected areas. M-LDS, die state c.

478. Trio of Late Dates. 1846 N-11 R1 VF35. Medium Date. E-MDS. 1854 N-26 R3+ VF30. 1856 N-11 R1 VF30. Upright 5. M-LDS. All are 10 points sharper with defects. Lot of 3 coins.

479. 1846 N-12 R1 VF35. Tall Date. Five points sharper but lightly burnished and retoned glossy bluish steel brown and chocolate. A tiny nick on the cheek right of the upper lip and a small rim bruise at the C in AMERICA are the only marks. E-MDS, die state b.



480. 1846 N-12 R1 MS60 (NGC MS63BN). Tall Date. Frosty bluish steel brown and chocolate with at least 10% of the mint red remaining on the reverse. There are a few very tiny ticks in the field left of the portrait and two more in the middle of the neck, none visible with a good glass. E-MDS, die state b.

481. 1847 N-3 R3 EF45+. Repunched Date. Very slightly sharper with a small splash of reddish chocolate toning at the second T in STATES, and this stain contains microscopic specks of greenish verdigris. Otherwise the surfaces are an attractive glossy medium brown with frosty mint luster in protected areas. Nicely struck E-MDS, die state b. The repunching is clear on all 4 digits of the date.

482. Trio of 3 Rare Late Die States. 1847 N-7 R2+ VF25. Ten points sharper with a couple rim dents on the reverse. LDS with strong rim cud breaks at the 18 and star 1. 1848 N-36 R5 F12. LDS, die state b. 1849 N-27 R4+ VF20. LDS, die state c. All are decent glossy brown and chocolate. The second is ex Jack Robinson, Superior 1/29/89;1449. Lot of 3 coins.

SIXTH FINEST KNOWN 1847 N-3



483. 1847 N-23 R5 AU55 (NGC MS63BN). Frosty steel brown and chocolate with lustrous lighter steel brown toning covering the protected areas. The only defects are some very tiny, dull pinpricks around the NE in ONE and NT in CENT. There are some tiny fibers stuck into a coat of Care or Blue Ribbon which could easily be removed, is desired. Nicely struck E-MDS, die state c early. Tied for CC#6. The attribution is noted on the NGC label. Ex Stack's 1/13/93:1306-Lee Bellisario-McCawley & Grellman Auctions #9, lot 126.



484. 1847 N-26 R3+ MS62 (NGC MS66BN). Frosty medium brown with 15% of the mint red remaining, mostly on the reverse. The surfaces are satiny and the only marks are a couple extremely tiny ticks on the eyebrow. Could use a bath to remove some specks of crud and uncover more of the underlying mint luster, especially on the reverse. MDS, die state c. Tied for CC#5.

485. Group of 6 Late Date Cents, 1847-1849. 1847 N-38 R1 VF30. MDS. 1848 N-25 R4 VF25. MDS. 1848 N-27 R2 VF20. MDS. 1848 N-41 R1 VF25. E-MDS. 1849 N-7 R4 VG10. MDS. 1849 N-19 R5- F12. EDS. The first is slightly sharper with minor defects while the rest are nice. Lot of 6 coins.



486. 1848 N-5 R4 EF45+. Slightly sharper but the toning is uneven and there is a small spot of dark reddish chocolate toning in the dentils over the first T in STATES. The obverse is steel brown and chocolate with frosty tan in protected areas. The reverse is mostly chocolate and steel brown with specks of lighter brown toning in a few places. M-LDS, die state d. The repunching right of the second 8 is sharp.

EQUAL THIRD FINEST KNOWN 1848 N-25

487. 1848 N-25 R4 AU50+ (NGC MS65BN). Frosty light steel brown and chocolate with satiny luster covering the fields and protected areas. There is a light touch of friction on the highest points plus a few trivial contact marks, including a light nick just left of the peak of the 1 and another near the hair left of star 8. M-LDS, die state c. An attractive cent, close to AU55. Tied for CC#3. The attribution is noted on the NGC label. Ex Jack Robinson, Superior 1/29/89:1426-Wes Rasmussen, Superior 2/8/98:219-R. S. Brown, Jr., Superior 6/2/2002:589.

SECOND FINEST KNOWN 1848 N-32



488. 1848 N-32 R6- VF20. Glossy medium brown and chocolate. The surfaces are smooth and show only minor contact marks, including a few light nicks along the jawline and a tiny nick on the nose before the eye. A very nice example of this rare variety. CC#2. Ex Henry T. Hettger.

*The 2005 EAC Convention Sale, April 23, 2005*

**489. 1849 N-2 R2 AU50 (NGC MS62BN).** Sharpness very close to mint state but covered with stains of very fine carbon dust that dull the luster and affect the eye appeal. Many of these stains contain microscopic specks of very fine greenish verdigris. No contact marks. Steel brown and chocolate with underlying frosty luster on much of the planchet and generous traces of mint red on both sides, especially on the reverse. M-LDS, die state z, and the finest recorded for this die state. Could use a bath and brushing to bring out the underlying luster.

**490. 1849 N-20 R1 EF40.** Glossy medium brown. Smooth, choice surfaces. A dull nick over star 12. Nicely struck EDS.



**491. 1849 N-20 R1 VG7.** Off Center. Sharpness F15 with some dull nicks and dents on both sides, mostly on the unstruck part of the planchet. Two dull, vertical nicks in the field before the chin and a diagonal one through the N in ONE are the obvious ones affecting the design, and there are some odd depressions around the 8 and star 13 as well. Nice glossy medium brown and chocolate. M-LDS. Struck 45% off center to K-11.5. Removed from an ANACS slab graded VF Details net F12, and the off-center strike is noted on the ANACS label, which is included. Ex Superior 9/5/2004:1098-William Chappelov.

BROADSTUCK 1849 N-23



**492. 1849 N-23 R3 EF40.** Broadstruck on Stage I Planchet (Rims Not Upset). Glossy steel brown and chocolate with frosty mint luster covering the protected areas. A few trivial ticks in the field before the tip of the nose and a thin nick high on the neck. Nicely struck E-MDS, die state b, but struck on a Stage I planchet that did not have the rims upset. The wide, flat rims give this cent the appearance of a broadstruck piece, and it is slightly off center as well. A neat mint error.

**493. Group of 7 Late Dates, 1850-1856.** 1850 N-1 R2 VF30. EDS. 1850 N-14 R4 F12. MDS. 1851 N-26 R5- VF20. MDS. 1852 N-22 R1 VF30. E-MDS. 1854 N-6 R1 VF30. MDS. 1854 N-29 R3 VF30. MDS. 1856 N-7 R2 EF40. Upright 5. MDS. A couple are very slightly sharper with minor defects. Lot of 7 coins.

**494. Trio of Late Dates, 1850-1853.** 1850 N-2 R1 VF35. 1852 N-14 R1 VF25. M-LDS. 1853 N-9 R2- F15. The last 2 are sharper with minor defects. Lot of 3 coins.



**495. 1850 N-9 R2 MS64.** Lustrous mint red mellowing to light steel brown. The obverse retains about 95% of the original color while the reverse is very faded and shows maybe 20% of the red. Would rate a gem grade if not for a half dozen small spots of darker steel toning on the obverse. The largest of these is a small one in the field under star 10, and it offers the best identifying mark. LDS, die state c. Tied for CC#5. Removed from a PCGS slab graded MS65RB (label included).

496. 1850 N-11 R3+ EF40. Glossy steel brown and chocolate. A small nick on the nose before the eye and another left of the foot of the T in CENT are the only notable marks. Scarce EDS, die state a. Ex Willard C. Blaisdell 9/76-R. E. Naftzger, Jr.-1997 EAC Sale, lot 385.

497. 1850 N-24 R6- F15 (PCGS VF20). Glossy medium brown. The surfaces are smooth and show only minor marks, including a dull hairline scratch from star 4 nearly reaching to the nose. Seldom found with color and surfaces this nice for some reason. Ex Les Bortner.



498. 1850 N-24 R6- F12. Sharpness VF35 but covered with uniform light corrosion. There is some greenish verdigris in protected areas. The only contact mark of consequence is a dull rim nick at the R in AMERICA. The attribution points are easily visible.



499. 1851 N-6 R1 MS62. Highly lustrous bluish steel brown with 5% of the red remaining on the obverse, 15% on the reverse. Would rate a choice grade if not for some very fine carbon covering the rim at star 3 and a faint nick in the field before the nose. MDS, die state b late.

THIRD FINEST KNOWN 1851 N-23



500. 1851 N-23 R3 MS60+. Lustrous bluish steel brown with generous traces of mint red remaining, mostly on the obverse. The fields are satiny and very attractive. Would rate a slightly higher grade except for a long, dull nick in the field close under the chin. Otherwise the only marks are a small spot of darker chocolate toning at the dentils left of star 5 and a light nick at the dentils at S-O. MDS, die state b. Tied for CC#3. Removed from a PCGS slab graded MS64BN.

FIFTH FINEST KNOWN 1851 N-34



501. 1851 N-34 R4 MS62 (NGC MS65BN). Glossy light bluish steel brown with 15% of the mint red remaining on the obverse, traces on the reverse. Excellent luster, especially on the obverse. The surfaces are very attractive and this cent would be choice if not for a faint, very fine diagonal hairline scratch from the cheek left of the ear down to the curl in the middle of the neck. MDS, die state b. CC#5.

BROADSTRUCK 1852 N-14



502. 1852 N-14 R1 VF20. Broadstruck. Five points sharper with a rim dent at OF. Glossy medium brown and chocolate, the obverse toning delicately woodgrained. There is some reddish brown toning at the rim from star 3 to star 5 and a small splash of similar toning right of star 11. LDS, die state e. This piece is broadstruck. The diameter is nearly 30 millimeters and the edge is strongly beveled, wider on the obverse than the reverse, leaving very large rims on the obverse side. Ex Ron Guth-Jack Robinson, Superior 1/29/89:1649-John D. Wright.

503. 1853 N-13 R1 AU58. Very close to mint state, just a hint of rub on the highest points. Lustrous light bluish steel brown. The surfaces are satiny and free of marks other than four small spots of dark olive toning on the reverse, the largest of these on the lower half of the F in OF. A small planchet flake or low spot shows between the L & I in LIBERTY, as struck. MDS.



504. 1853 N-21 R3+ MS60 (NGC MS64BN). Frosty bluish steel brown and chocolate with peeps of faded mint red remaining on both sides. The only notable marks are a splash of slightly darker steel brown toning left of star 5 and a small one in the dentils above the A in STATES. MDS, die state a late. Ex Henry Hettger.

THIRD FINEST KNOWN 1853 N-24



505. 1853 N-24 R2 MS62. Frosty steel brown with delicate overtones of bluish steel on the reverse and at least 10% of the mint red remaining, mostly on the obverse. There are two thin, light nicks on the neck plus a speck of carbon over the 3 in the date and another at the dentils left of star 4. Sharply struck E-MDS, die state a. The fine die lines in the field close behind the portrait are clear and the fields are satiny. Tied for CC#3. Ex Doug Bird 12/94-Walter Dudgeon 6/98-R. S. Brown, Jr., Superior 6/2/2002:1222.



506. 1853 N-26 R2 MS60+. Lustrous medium brown with delicate hints of light bluish steel overtone covering the fields. Would rate a slightly higher grade if not for a couple tiny rim nicks at UN and several small spots of darker olive toning, including one close over star 8 and another at the right top of the M in AMERICA. Sharply struck EDS, die state a. Excellent eye appeal in spite of the minor distractions. Ex William R. Hall Coins-Del Bland-Myles Z. Gerson-R. S. Brown, Jr., Superior 9/30/86:1364-John D. Wright.



507. 1853 N-28 R4 AU58 (PCGS MS63BN). Frosty light bluish steel brown with a small splash of light reddish brown toning in the field under star 5. A tiny arcing struck-through line on the left side of the 8 in the date is a good identifying mark for this cent. There are a few very tiny specks of dark crud on both sides, but these could be easily removed, if desired. MDS, die state b. Ex Henry Hettger.



510. 1854 N-19 R3+ MS60+ (NGC MS64BN). Frosty bluish steel brown with faded mint color remaining in protected areas of the reverse. The surfaces are satiny and the only notable defect is a small carbon spot at the dentils right of star 11. MDS, die state b. Tied for CC#3. Ex Henry Hettger.

DRAMATIC OFF CENTER 1853 N-29



508. 1853 N-29 R3+ F12. Off Center. Glossy light to medium brown, probably lightly cleaned and retoned, but the eye appeal is decent for the grade. The only notable marks are some light nicks, mostly in the unstruck portion of the planchet, including a rim nick at K-11 on the reverse. Struck 30% off center to K-1. A dramatic example of this type of mint error. Ex Denis Loring-R. S. Brown, Jr., 3/89-John D. Wright.

511. 1854 N-24 R2+ EF45+. Sharpness AU50 but very lightly cleaned and nicely retoned glossy chocolate brown with frosty medium brown covering the fields and protected areas. There is a small spot of dark toning just right of the E in ONE and a splash of darker reddish brown toning in the leaves under the second A in AMERICA. Sharply struck EDS, die state a. Fine die polishing lines cover the obverse fields.

512. Group of 5 Late Date Cents, 1854-1856. 1854 N-25 R3 VF30, MDS. 1855 N-2 R2+ VF20. 1855 N-3 R1 VF25, MDS. 1856 N-6 R1 VF20, LDS. 1856 N-18 R1 F15, E-MDS. A couple are slightly sharper with minor defects. Lot of 5 coins.

513. 1855 N-3 R1 AU50. Glossy light to medium brown with underlying frosty mint luster in protected areas. A small spot of darker toning right of the E in ONE and a splash of chocolate toning in the leaves under the second A in AMERICA are the only marks. EDS. Ex David Garvin (all proceeds to EAC).

514. Group of five 1855 N-9 Knob-on-Ear Cents. All are later die state with strong knob breaks, including one piece from the late state with the full knob. Grades are 30, 25, 20, 12, and 8. The late example is the VG8. A couple are slightly sharper with minor defects. Lot of 5 coins.

515. 1856 N-1 R1 AU58. Attractive glossy medium brown with frosty flowline luster covering the fields and protected areas. The only marks are a small swipe of slightly darker toning from star 11 down to star 12, a light nick on the tip of the chin, a faint hairline from star 2 to the dentils under star 3, and a small planchet flake on the rim under the stem tip, as struck. MDS. Ex David Garvin (all proceeds to EAC).

516. 1856 N-12 R1+ AU50, Upright 5. Glossy medium brown with frosty luster covering the protected areas. There are some small, faint wisps of darker brown toning in the right obverse field and some tiny ticks scattered about both sides, none notable. MDS, die state b.

517. 1856 N-21 R2 AU58. Frosty bluish steel brown with traces of faded mint color on the obverse. The fields are satiny while the highpoints are glossy. The only notable mark is a small rim nick under the 1 in the date. EDS, die state a. Ex Henry Hettger.



509. 1854 N-7 R2+ MS60. Attractive glossy medium brown with underlying frosty flowline luster in the fields and protected areas. No spots, stains, or notable signs of contact. An irregular struck-through line connects star 1 with the bust tip, as struck. This line is faint but it offers a good identifying mark. MDS, die state b. Tied for CC#6. Ex David Garvin (all proceeds to EAC).

FIFTH FINEST KNOWN 1856 N-22



**518. 1856 N-22 R6- EF40 (NGC MS61BN).** Sharpness EF45 or slightly better with a fresh, very light pincscratch from the bottom of the inner hairbun to the dentils under star 11, plus an old hairline scratch from the field under star 13 to the dentils right of star 11. Otherwise a couple small planchet flakes on the rim over star 4 are the only notable defects. Sharply struck EDS, die state a. The obverse fields are covered with fine die polishing lines. This cent could use a bath to remove light crud caked into protected areas and uncover more of the underlying mint luster. Tied for CC#5. The attribution is noted on the NGC label. Ex Henry Hettger.

**519. 1857 N-1 R1 F12.** Large Date. Slightly sharper, close to VF20, but lightly cleaned and retoning. The highpoints are a light coppery brown while the remainder of the planchet is glossy bluish steel brown and chocolate. Just needs a chance to retone. Some light nicks scattered about the obverse, none significant. MDS.



**520. 1857 N-4 R1 MS60.** Small Date. Frosty light to medium steel brown. The fields are satiny and attractive. No spots, stains, or notable marks. There are some small, shallow planchet chips around the rims and several shallow low spots from grease on the die inside the wreath, as struck. MDS. Ex William Chapelow.

**521. Blank Planchet for Mature Head Cent, 1843-1857, VF30.** Glossy medium brown. There are some of the usual shallow planchet marks (these smooth away when the planchet is struck), plus what may be a shallow planchet cutter arc on one side. Hard to grade these things, but this one is nice and smooth with good color. Weight 168.7 grains. Ex Ed Hipps 1/99-John D. Wright.

**522. Sturdy small tote bag from the Copper Development Association, Inc.** Appropriate for transporting books and cherrypicks. Donated by Gary Rosner. **All proceeds to EAC.**

**523. Special Deluxe Hardbound Copy of the 2005 EAC Sale Catalog.** One of 12 in leather, signed and numbered. **All proceeds to EAC.**

end of sale



**TERMS OF SALE**

1. This is a private sale. Participation is by invitation only and is limited to members of The Early American Coppers Club or invited guests. The auctioneer reserves the right to refuse to honor any bid which, at his sole discretion, he feels is not submitted in good faith. The auctioneer may withdraw any lot, without prior notice, for any reason whatsoever.
2. The highest bidder acknowledged by the auctioneer shall be the buyer. In case of dispute the auctioneer may at his sole discretion reopen a lot. In all cases the auctioneer's decision shall be final and binding on bidders.
3. All sales are payable in U.S. funds immediately upon receipt of invoice unless other arrangements have been made prior to the sale. Lots delivered in state of sale are subject to all applicable state and local taxes unless appropriate permits are on file with us.
4. Postage will be added to the invoice of all successful mail bidders.
5. A 10% buyers fee will be added to all invoices.
6. Please keep in mind this is not an approval sale. All sales are considered final. Sales to the floor may not be returned for any reason save authenticity. Sales to mail bidders are final unless lot proves to have been mis-described.
7. Lots will be available for viewing at the 2005 EAC Convention in Annapolis, or by appointment.
8. Mail bids or phone bids will be accepted up through the day of the sale. All bids will be reduced. Lots will open at one increment above second highest mail bidder. Bidding will proceed as competition dictates with the lot either selling to the floor or to the mail bidder at one increment above the second highest bid.
9. Consignor may bid or place a reserve bid on their own coins. Any coins repurchased by a consignor will be announced as a pass. Principals of the auction firm may consign or may bid on coins in the sale.

**MAIL BIDS**

Please mail all bids to:

M & G Auction  
P.O. Box 161055  
Altamonte Springs, FL 32716  
Phone 407-682-9592  
or Fax to Chris McCawley 405-341-1323

# Mail Bid Form

I hereby authorize M & G AUCTIONS to execute the following bid(s) at the auction to be held

Please buy the following lot(s) for me at the price(s) not exceeding those shown. The bid(s) is made subject to the "Terms of Sale", and I agree to remit promptly on receipt of invoice or notification that the bid(s) is successful. This signed bid sheet constitutes an agreement between me and M & G AUCTIONS.

NAME \_\_\_\_\_

ADDRESS \_\_\_\_\_

CITY \_\_\_\_\_ STATE \_\_\_\_\_ ZIP CODE \_\_\_\_\_

SIGNATURE \_\_\_\_\_ PHONE ( ) \_\_\_\_\_

EAC# \_\_\_\_\_

**IF NECESSARY, PLEASE INCREASE MY BID(S) BY:**

10%     20%     30%     Other \_\_\_\_\_ %

**SPECIAL INSTRUCTIONS:**

---

---

---

---

---

---

---

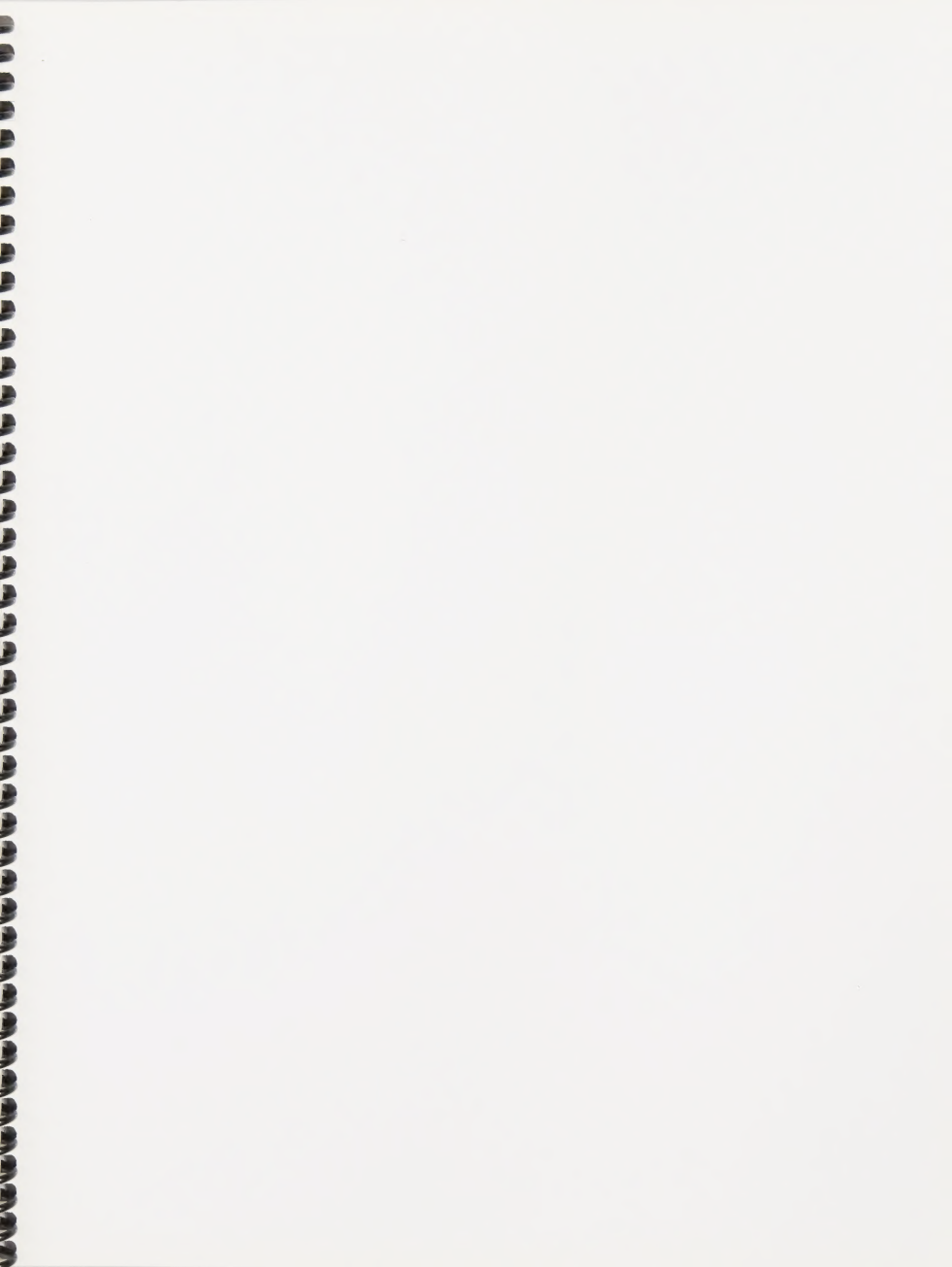
---

---

---

Please Mail Bids To: M & G Auction • P.O. Box 161055 • Altamonte Springs, FL 31716 • Phone 407-682-9592 • FAX 405-341-1323







P.O. Box 2967 • Edmond, Oklahoma 73083

(405) 341-2213