



Chris McCawley and Bob Grellman
present

**The 2006
EAC Convention
Sale**

May 6, 2006

Chris McCawley - Bob Grellman

present

the

2006 EAC Sale

May 6, 2006, 7:30 p.m.
in the Sanibel Ballroom
of the Marriott Hotel

1001 Okeechobee Blvd., West Palm Beach, Florida 33401

Welcome to the 2006 EAC Sale.

The sale will be held Saturday night May 6 at 7:30 p.m., at the Marriott Hotel West Palm Beach, Florida.

Lot viewing will be held May 3-6 at the Early American Coppers Club Convention. We welcome your participation whether in person, by mail or by fax bid. Please feel free to call Chris McCawley (972-668-1575) or Bob Grellman (407-682-9592) to discuss any lot in the sale.

Mail or fax bids should be directed to Bob's Florida address, (please call before faxing).

This is a private sale, you must be a member of EAC to bid - please read our terms of sale before bidding.

Events at the EAC West Palm Beach Convention May 3 thru 7, 2006

Wednesday:

12:00 Security Room Opens

Thursday:

9:00-12:00	Grading/Counterfeit Seminar _____	Gallery B, C
10:00-5:00	Lot Viewing _____	
2:00-5:00	Dealer set-up _____	Regency
5:00	Security Room Closes _____	
5:00-7:00	Reception _____	Poolside Tent
7:00-10:00	Happenings _____	
	Colonial Gallery A _____	
	Half Cent Gallery B _____	
	Large Cent Gallery C _____	

Friday:

8:00-9:00	Dealer set-up _____	Regency
8:00-9:00	Exhibitor set-up _____	Regency
9:00-5:00	Bourse open to public _____	Regency
9:00-5:00	Exhibits open to public _____	Regency
9:00-5:00	Lot Viewing _____	Regency
10:00-3:00	Educational Seminars _____	Gallery
10:30-	Whitehall (Flagler House) tour _____	Lobby
8:30-10:30	Educational Forum _____	Sanibel

An Evening with David W. Lange
Author of "History of the "United States Mint and its Coinage"

Saturday:

7:30-10:00	Board Meeting _____	Bistro
8:00-9:00	Bourse open to dealers only _____	Regency
9:00-5:00	Bourse open to public _____	Regency
9:00-5:00	Lot Viewing _____	Regency
10:00-4:00	Educational Seminars _____	Gallery
10:30-	Worth Avenue Tour _____	Lobby
12:00-1:00	C4 Meeting _____	Gallery
7:30-1:00	EAC Sale _____	Sanibel

Sunday:

8:00-9:00	EAC Annual Meeting _____	Sanibel
9:00-3:00	Bourse open to public _____	Regency
9:00-3:00	Exhibits open to public _____	Regency
3:00	Convention Ends _____	

COLONIALS



1. 1760 Voce Populi Halfpenny Nelson-4 R3 F15 (PCGS slabbed VF30) Rather glossy chocolate brown with lighter medium brown toning covering the highpoints. The surfaces are decent but do show microscopic roughness and traces of light verdigris in some of the protected areas. LDS with obvious crumbling on the obverse legend.



2. 1787 Connecticut Miller 33.34-Z.3 R6 F12. Glossy chocolate and medium brown. Smooth, defect-free surfaces except for a planchet flake at the top of the L in LIB, as struck. Slightly nicer than the Perkins example. Weight 143.3 grains.



3. 1787 Massachusetts Half Cent Ryder 5-A R3 VF30. Glossy olive brown and chocolate with relatively smooth surfaces, but there is some very fine roughness from microscopic planchet voids covering the obverse fields (Indian side). A thin rim nick under the Indian is the only notable mark. Nice for the grade. Weight 77.6 grains.



4. 1786 New Jersey Maris 32-T R1 VG10. Double Struck. Sharpness VF20 or better but there are three round punchmarks on the obverse. Otherwise the surfaces are smooth and free of significant defects. Glossy medium brown with chocolate brown toning in the protected areas. Double struck with an offset of less than a millimeter between the impressions. The doubling is clear on both sides, but it is strongest on the reverse. Weight 135.0 grains.

5. 1787 New Jersey Maris 46-e R1 VG8+. Choice glossy medium brown. Smooth and virtually flawless, just worn. LDS with strong swelling in the center and lower portion of the obverse that weakens the upper half of the date. Weight 139.9 grains.



6. 1788 Vermont Ryder-16 R1 F12. Glossy medium brown and chocolate. The surfaces are mostly smooth but do show minor roughness on the left side of the obverse and in the reverse fields, plus an area of shallow corrosion between the I & N in INDE. The date is clear and the legends are strong. Weight 127.8 grains.



7. 1791 Washington Cent with Small Eagle Reverse Breen-1271 F15. Slightly sharper but lightly cleaned. There are some fine hairline scratches in the obverse fields and a few tiny rim bruises on both sides. Glossy chocolate brown in the protected areas and lighter brown everywhere else thanks to the light cleaning. Weight 192.9 grains.

HALF CENTS



8. 1795 C-2a R3 VG10. **Lettered Edge.** Glossy chocolate brown, the highpoints a shade or two lighter than the protected areas. The surfaces are decent but uniform extremely fine granularity covers both sides. The minute roughness is well hidden under the natural glossy patina, and the eye appeal is quite nice for the grade. No verdigris, and the only marks are a few tiny planchet voids near the dentils at CA to just right of the fraction, as struck. The date and legends are strong. LDS, Manley state 3.0.

10. 1797 C-3b R4 VG10. **Lettered Edge.** Breen Plate Coin for State I. Sharpness VF25 but lightly burnished to minimize some very shallow corrosion, mostly on the left side of the obverse. There is a rather large, dull nick on the neck plus a few smaller ones on the cheek and additional tiny contact marks scattered about both sides. The rims were carefully smoothed in a few places on both sides to hide the effects of some small rim bumps and nicks, and there is a slight wavy bend in the planchet from the center of the reverse to the rim right of the fraction. May sound like a beast, but this piece is decent for the grade in spite of the defects. There is no verdigris, and the color is a rather attractive glossy medium brown with darker olive brown tones in protected areas. The date is bold and the legends are strong. The edge lettering is complete even though the letters hang off the planchet (the letters are too tall to fit on the thin planchet). MDS, Manley state 2.0. This is the plate coin for die state I in the Breen book, even though the coin clearly fits his description for die state II. Weight 75.5 grains. Ex Bill Weber 1983-Bob Vail 1985-Chris McCawley 9/21/96-Joel Harwin 9/98-Jack Beymer-Chris McCawley



9. 1797 C-1 R2 VG10. **Plain Edge.** 1 above 1. A few points sharper but there are a couple light pinscratches on the reverse, including one arcing through TES OF A and another arcing from U through the numerator to CA. The only other marks are a tiny planchet lamination at the left top of the second T in STATES, as struck, and a thin planchet void or very old scratch right of the fraction. Lightly cleaned and retoned a rather glossy steel brown and chocolate. The date and misplaced 1 are strong and the legends are clear except for ICA, which was weakened by the late die state. LDS, Manley state 5.0.



11. 1802/0 C-2 R3 VG10. Overdate 2 over 0. A point or two sharper with a few tiny nicks and hairline scratches hidden in the natural patina and die roughness. The only notable mark is a dull, light scratch from the base of the L down to the hair ribbon. Rather glossy chocolate brown. Later die state with strong die rust covering much of both sides, Manley state 4.0. The date is strong and the overdate is clear. The legends are strong as well except for weakness inside the wreath where HALF CENT was poorly struck and is surrounded by tiny planchet chips thanks to the soft strike in that area.

12. 1803 C-2 R4 AG3. Slightly sharper but covered with hairline scratches and the surfaces are very slightly rough under a rather glossy dark olive brown patina. The highpoints are a lighter shade of chocolate brown. A shallow dent at the R in LIBERTY causes the right side of the fraction to be worn smooth, but everything else is visible and the date is strong. LDS, Manley state 7.0, with a strong cud break at STATE.



13. 1803 C-3 R2 VF30+. At least ten points sharper but cleaned and retoned glossy dark bluish steel brown and chocolate with frosty luster showing in protected areas of the reverse. The reverse is quite attractive while the obverse shows traces of extremely fine roughness near the dentils before the portrait, an arc of impressed dentils from the temple down to the jawline, and a fine hairline scratch from the base of the B down to the top of the hair ribbon. Might benefit from a better retoning on the obverse. MDS, Manley state 3.0.



14. 1803 C-4 R4 VF30. Glossy steel brown with frosty luster covering the protected areas on both sides. The surfaces are smooth and the only defects are a few tiny rim nicks on both sides, including one off the lower end of the hair ribbon and three tiny ones at MER. Appears to be a later die state with minor swelling in the centers and very smooth fields that may be from a fresh die lapping. The central details are a bit weak for the grade while the surfaces and frosty luster suggest a higher grade. The reverse is rotated 15 degrees CCW.



15. 1804 C-4 R5 G4. ANACS slabbed as VG details net G4. Sharpness G5 or so but covered with fine roughness. There is some very shallow reddish brown scale in protected areas and a couple old, light scratches fully blended into the patina in the field before the portrait. The date and legends are full and easily readable. Dull dark steel and reddish brown. May benefit from a proper brushing to restore some life to the surfaces. MDS, Manley state 2.0.



16. 1804 C-4 R5 G4. The obverse is barely G4 and could be called AG3 while the reverse is a solid G5 or better. The surfaces are smooth and show only minor contact marks, including a small nick on the first 0 in the denominator. The date is not strong but it is easily readable and the reverse legends are clear. Rather glossy chocolate brown. LDS, Manley state 3.0. A nice lower grade example of this tough die variety.



17. 1804 C-5 R4 VF25. Spiked Chin. Sharpness AU50 but the upper half of the obverse is covered with very fine roughness and the reverse shows similar roughness on the left side, including some shallow pitmarks or planchet voids at the dentils over TED ST. No verdigris or other significant marks. Slightly glossy steel brown and chocolate with darker steel toning in the rough areas. MDS, Manley state 4.0.



18. 1804 C-6 R2 VF35. Spiked Chin. Glossy dark steel brown and chocolate. Very nice for the grade, only a few tiny ticks in the field from choice. M-LDS, Manley state 9.0.



19. 1804 C-7 R4 VG7. Spiked Chin. Sharpness VF20 but slightly bent and straightened and the obverse is covered with very fine porosity. The rims at the top and bottom are smoothed. Rather glossy chocolate and steel brown. The date and legends are all strong. Very rare E-MDS, Manley state 2.5.

Rare Manley State 2.5 1804 C-7



20. 1804 C-7 R4 VG7. Spiked Chin. Glossy chocolate brown, the highpoints a couple shades lighter than the protected areas. The surfaces are smooth and the only notable defect is a small rim bruise over ER in LIBERTY. Very rare E-MDS, Manley state 2.5.

Rare Manley State 5.0 1804 C-7



21. 1804 C-7 R4 VG10. Spiked Chin. Glossy chocolate and steel brown. Possibly lightly cleaned and retoned long ago, but the eye appeal of this piece is excellent for the grade. The surfaces are smooth and show only a few minor marks, including a dull rim nick under the right side of the 4 and a light rim bruise under the 80. MDS, Manley state 5.0, with a strong cud break at OF-A. The date and legends are bold.



22. 1804 C-9 R2 VF35. (ANACS slabbed as EF40) Glossy chocolate and olive brown with frosty lighter brown toning in protected areas. The only marks are microscopic except for a small, dull rim nick right of the Y in LIBERTY. E-MDS. Manley state 2.0.



23. 1805 C-1 R2- EF45. Stemless Wreath. Double Struck Obverse. Slightly sharper but lightly cleaned and retoned a glossy reddish brown and chocolate. No spots or stains, and the fields are covered with attractive flowline luster. Double struck. The first strike was properly centered but appears to have made an impression only on the obverse. The second strike also was properly centered and was rotated 75 degrees CW relative to the first strike. Undertype from the first impression shows clearly on the portrait, strongest on the face, top of the head, and along the bust line. The neck of the undertype impression slants across the cheek and the tip of the nose is hidden in the hair under the E in LIBERTY. Much more undertype can be found with minimum effort.

24. 1805 C-1 R2- VG8. Stemless Wreath. Struck over off-center Reverse Brocage. Glossy medium brown with chocolate toning in protected areas, the reverse slightly mottled. Smooth, attractive surfaces, a fine hairline scratch in the field before the face being the only notable mark. Double struck. The first strike was an off center reverse brocage struck about 60% off center. The second strike was normal, and the incuse reverse brocage impression shows clearly in the field before the portrait. RIC from the normal but off center reverse impression shows on the rim over AM. An attractive multiple mint error. Removed from an NGC slab graded VG10, and the double struck over brocage feature is noted on the NGC label, which is included.

25. Pair of Half Cents, 1804 & 1856. 1804 C-12 R2 AG3. Crosslet 4 without stems. 1856 C-1 R2 VG10. Sharper with some stains and light corrosion. Lot of 2 coins.

Double Struck 1805 C-4



26. 1805 C-4 R2- VF30. Large 5 with Stems, Double Struck. Lightly cleaned with traces of very faint hairlines remaining from the cleaning. Now nicely retoned glossy olive and bluish steel brown. No roughness or verdigris and only a few light contact marks, including a couple small nicks and a very light hairline scratch in the field before the face. MDS, Manley state 2.0 early. Double struck with a very small offset between impressions. The doubling is strongest at the bottom of the obverse, especially on the date, but clear doubling can be found on both sides. Might be classified as a chatter strike (die bounce), but that is usually limited to one side.



27. 1806 C-2 R4 VG7. Small 6 with Stems. Nice glossy medium brown and chocolate. Just a few light contact marks on otherwise smooth surfaces. These include a pair of nicks at the dentils under the hair ribbon, a dull rim nick over T in LIBERTY, and a thin nick on the rim right of that Y. The date and reverse legends are strong. MDS, Manley state 2.0.



28. 1807 C-1 R1 F12. Sharpness VF25 or better but there are too many contact marks for the sharpness grade, and the portrait also shows extremely fine porosity. No verdigris. Lightly cleaned and retoned a slightly glossy steel brown with chocolate and olive brown tones in protected areas. Sharply struck EDS, Manley state 1.0. The reverse is rotated 10 degrees CCW.

29. 1807 C-1 R1 F12. Glossy steel and light olive brown. Only microscopic marks, including a small rim nick under the 0 in the date. LDS, Manley state 3.0. The reverse is rotated 10 degrees CW.



30. 1808 C-3 R1 EF45. Attractive lustrous steel brown with mint frost covering the protected areas. The only marks of any consequence, and they are trivial, are a small spot of microscopic reddish carbon at the dentils above the E in LIBERTY and another at the dentils before the face, plus a tiny pinprick inside the O in OF. Nicely struck E-MDS, Manley state 2.0, with the reverse rotated 25 degrees CCW. The repunching on the second 8 is sharp. (Actually this "8" is the product of two denominator-size zeroes placed one atop the other, and the repunching is from the upper "0" positioned a bit too low. The 8 punch wasn't available, so they made do with what they had.)

The 2006 EAC Convention Sale, May 6, 2006



Cohen Plate Coin 1809 C-2



31. **1808 C-3 RI EF40.** Choice glossy medium brown with chocolate brown toning in protected areas. Excellent eye appeal with lots of flowline flash in protected areas. The only marks are a small horizontal nick low on the neck and a light rim nick over the second S in STATES. MDS, Manley state 3.0, with the reverse rotated 10 degrees CW. In the later die states, this variety is always a bit weaker on the obverse and stronger on the reverse, the difference often 10 points or more. The difference is caused by a subtle outward bulging on the obverse and corresponding inward sinking on the reverse. Thus grading later die state examples of this variety (and 1807 C-1, which is similarly afflicted), presents a challenge.

35. **1809 C-2 R3 VF25, Cohen Plate Coin.** Glossy olive and reddish chocolate brown with lighter steel brown toning on the highpoints. A few light nicks in the field off the chin and a tiny scratch just right of the date, but overall attractive for the grade. E-MDS, Manley state 2.0. The reverse is rotated 30 degrees CCW. This is the Cohen plate coin for his first and second editions.



32. **1808 C-3 RI EF40.** Choice glossy medium brown and chocolate with frosty light brown in protected areas and darker steel brown toning on the highpoints. Nearly flawless except for a spot of dark olive toning at the dentils over the T in LIBERTY and a small nick on the second S in STATES. Outstanding eye appeal for the grade. M-LDS, Manley state 4.0, with the reverse rotated 10 degrees CCW. As usual for the later die states of this variety, the obverse shows a little more wear than the reverse.

33. **1808 C-3 RI VG8+.** Glossy chocolate and light olive brown. Smooth, nearly flawless surfaces for the grade. A pinprick at the dentils over the R in AMERICA is the only notable defect. LDS, Manley state 3.0, with the reverse rotated 20 degrees CW.

34. **1809 C-1 R4+ G5.** A few points sharper but there is a patch of shallow corrosion at star 3 and another above the head, plus a small spot of reddish verdigris on the left side of the H in HALF. Otherwise the surfaces are mostly smooth with only some light contact marks, including several light hairline scratches on the obverse and a shallow dig at the bottom of the M in AMERICA. Rather glossy steel brown and chocolate with a few splashes of reddish brown toning on both sides. MDS, Manley state 2.0. The date is bold and the legends are strong. Not perfect but not bad for the grade.

36. **1809 C-3 RI MS60, Misaligned Reverse.** Lustrous bluish steel brown and olive brown with delicate hints of lighter sea-green overtones on the obverse. Excellent eye appeal. The only notable defects are a faint horizontal hairline on the throat, another on the chin, and a tiny rim nick or planchet chip above star 7. MDS, Manley state 1.0, with the reverse rotated 40 degrees CCW. The reverse is misaligned to K-11.5 while the obverse is properly centered on the planchet.



37. 1809/6 C-5 R1 EF45+. Overdate 9 over 6 (or inverted 9). Choice glossy medium brown and chocolate. Virtually flawless and very close to AU50. A couple faint, very light ticks on the bust tip and a tiny nick on the top of the E in CENT are the best identifying marks. MDS, Manley state 2.0. The overdate is strong.

39. 1825 C-2 R1 EF45. Five points sharper but there is a faint hairline scratch in the field under the chin and a couple more above the L in HALF, plus a small rim nick at star 11. Lustrous light brown with darker steel brown and chocolate toning on the highpoints. There is a tiny planchet fissure in the hair under the T in LIBERTY, and this flaw is covered with darker olive toning. Nice struck EDS, Manley state 1.0, with the reverse rotated 15 degrees CW. The fields are smooth and slightly reflective, especially on the obverse.



40. 1826 C-1 R1 VF35+. Sharpness EF45 but the reverse was lightly cleaned and still shows traces of frosty very faded red in protected areas thanks to a thin coating of lacquer or some similar protectant. Glossy medium brown and light olive with traces of darker bluish steel toning on both sides. The only contact marks are a tiny nick over the A in HALF and another under the loop in the wreath ribbon. M-LDS, Manley state 4.0. The reverse is rotated 25 degrees CCW causing the top of the head and bottom of the wreath to be a bit weakly struck.



38. 1825 C-2 R1 AU50+. Choice frosty light to medium brown with mint luster covering the protected areas. A tiny splash of darker olive toning at the bottom of the 25 and a tiny nick close under the tip of the wreath ribbon are the best identifying marks. MDS, Manley state 2.0, with the reverse rotated 15 degrees CCW.

41. 1826 C-2 R3+ EF40. Glossy dark steel brown and chocolate with traces of frosty lighter steel brown toning in protected areas. The notable marks are a very light hairline scratch down the neck and another in the field before the lips. Otherwise very nice. EDS, Manley state 1.0. The undertype lazy 6 is clear.



42. 1826 C-2 R3+ EF45. Reverse Doubling. Glossy medium brown with darker steel brown toning on the highpoints. There is a delicate swipe of darker olive brown toning on the lower right part of the reverse and a small spot of reddish brown verdigris on star 9. A light diagonal nick close under the earlobe is the only notable contact mark. Sharply struck MDS, Manley state 2.0. The fields are slightly reflective, the reverse is rotated 15 degrees CCW, and much of the reverse shows clear doubling from die bounce.



44. 1826 C-2 R3+ VF35. (PCGS slabbed as AU53) Slightly sharper with a fine hairline scratch from the hair over the B in LIBERTY down to star 11. Frosty light steel brown with a puff of darker steel toning in the field over the bust tip and some more scattered about the reverse. MDS, Manley state 2.0. The reverse is rotated 10 degrees CW.



45. 1828 C-1 R1 AU58. Glossy chocolate brown with underlying frosty lighter golden brown toning in protected areas of the reverse. Only a few tiny contact marks, including a tick on the cheek right of the nostril and a small rim nick at the bottom of the reverse. Nicely struck E-MDS, Manley state 2.0. The fields are smooth and slightly reflective giving this piece excellent eye appeal. Just a hint of rub on the highest points from mint state.



46. 1828 C-2 R1 VF25. 12-Star Obverse. Five points sharper but the surfaces are slightly dull and show a few trivial contact marks on both sides, none notable. Medium brown with a few small splashes of darker olive brown toning on both sides. E-MDS, Manley state 2.0.



47. 1828 C-2 R1 VF35. 12-Star Obverse. Slightly sharper but there is a dull nick in the middle of the neck and a small rim nick above star 7. Frosty dark steel brown with lustrous lighter steel brown toning in the protected areas. LDS, Manley state 3.0.

43. 1826 C-2 R3+ EF45. Slightly sharper but lightly cleaned and retoned glossy light to medium brown with reddish brown toning on the right side of the obverse and a splash of dark olive toning at ES in STATES. A dull nick in the field under the wreath is the only significant contact mark. MDS, Manley state 2.0. The fields are reflective thanks to a fresh die polishing and the reverse is rotated 15 degrees CW.



48. 1828 C-2 R AU55 12-Star Obverse. Very close to mint state but lightly cleaned and retoned lustrous light olive brown with hints of faded mint color in a few places. The surfaces are satiny and show no marks or other defects. LDS. Manley state 3.0

49. 1828 C-3 R1 AU50. Frosty light steel brown, the obverse a couple shades darker than the reverse. The surfaces are satiny and offer the eye appeal of a mint state example. LDS. Manley state 4.0

50. 1828 C-3 R1 MS60. Lustrous light steel brown with hints of underlying very faded mint color on both sides. A hint of darker steel toning connects star 7 to the forelock and a dull horizontal nick is close over the E in CENT. Excellent eye appeal for the grade. M-LDS. Manley state 3.0.

51. 1832 C-3 R2 VF35. Ten points sharper with a few specks of carbon and shallow verdigris, including one at the dentils above the back of the head and another in the wreath under the I in AMERICA. Otherwise the surfaces are smooth and attractive. Glossy light to medium brown with frosty lighter brown toning in protected areas. MDS.

52. 1833 C-1 R1 VF20. Ten points sharper but there are some small rim nicks on the obverse and a pinch on the rim left of the date. Otherwise smooth and free of notable defects. Glossy chocolate and medium brown. E-MDS, Manley state 1.0.



53. 1833 C-1 R1 MS64. Lustrous bright mint red mellowing to light steel brown, about 75% of the mint color remaining. A gem example if not for a few small spots, including one just left of the peak of the 1, another on the leaf under the D in UNITED, and a third touching the leaf above LF in HALF. MDS, Manley state 2.0. The fields are slightly prooflike which adds to the flash and eye appeal.



54. 1835 C-2 R1 MS60. Glossy bluish steel brown and light olive with slightly reflective fields on both sides. The only defect is a rather deep planchet flake in the field under the wreath, as struck, plus a couple other faint laminations in that same area. Otherwise this piece is beautiful. LDS, Manley state 3.0. The reverse is rotated 20 degrees CW.



55. 1835 C-2 R1 AU50. Clipped Planchet. Glossy olive brown and chocolate with frosty medium brown toning in protected areas of the reverse. The only notable mark is a very faint scuff that barely affects the glossy surface around the date as if someone slid a thumb over that area. LDS, Manley state 3.0, with the reverse rotated 20 degrees CW. There is a small, curved planchet clip affecting the dentils at the upper two stars.

56. 1850 C-1 R2- VF35. Double Profile. Slightly sharper but a bit dull for the grade. No notable marks or other defects. Slightly glossy steel and light olive brown. There is sharp, clear doubling from die bounce on the profile and date, and shallow low spots are at the dentils tips on both sides.

57. 1851 C-1 R1 VF20. Sharpness VF35 but covered with small, light nicks. None of these marks is significant, but there are far too many for the sharpness grade. Glossy chocolate brown with frosty lighter brown toning in protected areas.



58. 1853 C-1 R1 MS62. Mint red toning to bluish steel brown, about half the red remaining. A choice example except for a couple light nicks on the throat, a speck of carbon above star 4, and another near the dentils at F-A. E-MDS, Manley state 1.0. Removed from a PCGS slab graded MS64RB.

The 2006 EAC Convention Sale, May 6, 2006



59. 1853 C-1 R1 MS62 (PCGS slabbed MS64BN). Frosty bluish steel brown with 10% of the faded mint color remaining, mostly on the reverse. No spots, and the only mark is a tiny pinprick just right of star 11. Choice surfaces but just a bit dull from a thin layer of natural oxidation. May gain a point in grade following a decent brushing to bring out the underlying luster. MDS, Manley stated 1.0.

60. 1853 C-1 R1 EF45. Frosty light olive brown. No notable defects. MDS, Manley state 1.0.



61. 1855 C-1 R1 MS64. Lustrous bright original mint red fading to light steel brown on the highest points of the design, about 90% of the original color remaining. Kept from a slightly higher grade by some tiny specks of dark toning sprinkled about both sides, the largest one of these in the field near the hair below star 8. MDS. Most likely from the hoard of mint state examples discovered in the 1930's by Thomas L. Elder.

62. 1856 C-1 R2 VF25. Glossy light olive brown, the reverse a few shades lighter than the obverse. No defects, only light wear. MDS, Manley state 2.0.

63. 1856 C-1 R2 VF20. Sharpness EF40 with light scratches covering the obverse fields and some greenish verdigris caked into protected areas of the reverse, probably removable. Glossy light olive brown with reddish brown toning on the lower half of the reverse. MDS, Manley state 2.0.

64. 1856 C-1 R2 VF30. Five points sharper with a small planchet flake from a lamination in the field right of star 6, plus a few trivial contact marks scattered about both sides. Glossy medium brown with frosty luster showing in some of the protected areas and a couple wisps of darker chocolate brown toning around the mouth and over the coronet tip. M-LDS, Manley state 2.0.



65. 1857 C-1 R2 EF40+. Sharpness AU50 but lightly cleaned and retoned frosty bluish steel and light olive brown. The only notable mark is a dull, light diagonal nick in the middle of the jawline. Nicely struck MDS. Nice eye appeal for the grade in spite of the minor defects.

LARGE CENTS



68. 1793 S-1 R4 Basal State-1. Chain AMERI. (NGS slabbed as Fair-2) No significant defects, just heavily worn. The surfaces are smooth except for some parallel planchet striations on the lower half of the obverse, as struck. The date is gone although a date was "added" using extremely faint hairline scratches, and the only thing remaining on the obverse is the portrait from the top of the head down to the chin. On the reverse, UNITED and at least half the chain remain visible, and they offer just enough detail to be sure of the S-1 attribution. AMERI and the period following are gone except for hints of the first A. (Note: The slabbing company, NGS, is NuGrade Service. No, I don't have a clue.)

66. 1793 S-1 R4 G5. Chain AMERI. Sharpness VG10 but covered with a rather uniform microscopic corrosion. No verdigris or planchet flaws. The only marks are some faint hairline scratches on both sides, and these are well hidden in the toning. Cleaned and retoned a slightly glossy dark bluish olive brown. The date is full and easily readable but not strong. LIBERTY is strong, and the reverse legends are complete. AMERI and the period following are clear. EDS.

67. 1793 S-1 R4 AG3+. Chain AMERI. Slightly sharper with areas of moderate roughness from shallow corrosion, strongest in the field before the face and on the upper right quadrant of the reverse. The date is faint but readable with some effort, and the legends are complete and easily readable although certainly not strong. AMERI and the period following are clear. Rather glossy chocolate brown with medium brown toning on the highpoints. Not perfect but not bad for an AG3+Chain AMERI cent.

69. 1793 S-9 R2 F15. Wreath Cent. Sharpness VF35 but covered with uniform fine to moderate roughness. No marks or verdigris, and the eye appeal of this piece is surprisingly nice given the surfaces. Chocolate brown with the highpoints a few shades lighter than the protected areas, and both sides display a good amount of gloss in spite of the roughness. MDS, Breen state VI.



70. 1793 S-12 R6 AG3. Liberty Cap. A few points sharper but covered with fine to moderate porosity. No verdigris or notable marks. The 1 in the date is weak but the 793 are clear, and the legends are virtually complete except for ONE CENT, which is gone thanks to the usual swelling in the center of the reverse. Dark steel brown and chocolate. MDS, Breen state II. Decent detail for the grade. A very rare variety. Ex Jim Long-2004 EAC Sale, lot 75.

71. Donated Lot: "Jarhead Red" California red table wine, 2 bottles. A prominent member of EAC who happens to be a highly decorated combat veteran has donated a case (12 bottles) of this special wine. The wine is vinted and bottled by the Firestone Vineyard in Los Olivos, California. The vintners are veterans of the US Marine Corps, and they donate the net proceeds from sales of this wine to the Marine Corps Scholarship Foundation which provides educational assistance to the children of fallen Marines. All proceeds from the sale of this donated lot, however, go to EAC. The Marines already got their cut.

72. Donated Lot: A special presentation copy of Al Boka's book *Provenance Gallery of 1794 Large Cents.* This is a deluxe hardbound limited-edition version with dust cover and slip case. Donated by the author. All proceeds to EAC.



73. 1794 S-18b R4 VG7. Head of 1793. (SEGS slabbed as VF30 corroded) Sharpness near VF30 but covered with uniform light to moderate corrosion. No verdigris, and the only marks of any consequence are a dull scratch in the field left of the cap and a thin horizontal scratch just right of the base of the T in CENT. Lightly cleaned and retoned dark olive and steel with lighter reddish brown toning covering the highpoints. The date is readable but not strong and the legends are complete except for the fraction, which is faint at best. Decent detail for a Head of '93 cent, but not very attractive.



74. 1794 S-19b R4 G6. Head of 1793. Glossy steel and olive brown. Possibly lightly cleaned and retoned but the eye appeal still quite nice for the grade. The only notable marks are a few shallow pits at UN1. The surfaces are smooth, just well worn. The date is weak but visible, and the legend outside the wreath is weak with much of it unreadable. In contrast the head and lower half of the wreath show more detail than you would expect for the grade. The edge lettering is complete and clear. Ex Doug Bird 4/05-Mike Iatesta. Superior 9/19/05:260.



77. 1794 S-21 R3 Fair-2. A couple points sharper but covered with uniform fine porosity. No verdigris or marks. Medium brown. The date is faint but readable, and the legends can be made out with just a bit of effort.



78. 1794 S-22 R1 G5. Slightly sharper, especially on the obverse, but there is a scrape on the rim right of the neck and a couple light rim bruises on each side, plus a couple dull scratches above and below the 94 in the date. Glossy chocolate and darker steel brown. The date is clear and the legends are complete except for weakness at AMER. LDS.

79. 1794 S-26 R2 VG7. (NGS slabbed as F12 porous) Counterstamped H. HEIDLER (Brunk H-458) A few points sharper but very lightly corroded and there is a scrape or planchet void at the rim at the bottom of the obverse. Dull dark steel brown. The date is strong except for the bottoms of the digits which are weakened by the void, and the legends are nearly complete. The counterstamp is strong, and known to Brunk only on an 1852 cent.



80. 1794 S-28 R2+ VG8. Sharpness F12 but there are some fine pinscratches in the field under the cap, some more in the field under the chin, a couple light rim bumps on the left side of the obverse, and a couple more over STATES. Glossy chocolate and light steel brown. The date is strong and the legends are clear. MDS. Breen state IV.



81. 1794 S-31 R1 VG8. Sharpness F12 with uniform very fine granularity under a slightly glossy patina of chocolate and olive brown. The only notable marks are a small nick in the field close under the end of the chin and a tiny rim nick at TE in STATES. The planchet is not perfectly round, as minted.

75. 1794 S-20b R4+ VG10. Head of 1793. Sharpness F15 or slightly better, especially on the reverse, but there is a dull scratch down through the E in LIBERTY to the top of the head, a lighter scratch along the bottom of the cap to the rim at left, a deep nick at the E in UNITED, and a couple smaller ones at the base of the A in STATES. In addition, there is some light corrosion and very shallow verdigris at the hair left of the date and smaller patches of lighter roughness in the field before the face and at RIC in AMERICA. The remainder of the planchet is smooth and offers very nice eye appeal for the grade. Glossy chocolate and olive brown, the reverse with some underlying lighter brown tones in protected areas. The date is bold and the legends are clear except for the usual weakness at UNIT.

76. 1794 S-20b R4+ AG3. Head of 1793. Slightly sharper, especially on the obverse, but covered with uniform fine granularity. There is some shallow greenish verdigris above the head and a small planchet chip or pitmark at the D in UNITED and another in the wreath right of T in CENT. The date is clear except for the bases of the 1 & 7. LIBERTY is easily readable, and at least half the reverse legend can be made out. Slightly glossy dark olive brown. LDS, Breen state II, with a wave in the field from the dentils to the upper chin. Ex 1985 EAC Sale, lot 27.

The 2006 EAC Convention Sale, May 6, 2006

82. 1794 S-31 R1 G-4. Very slightly sharper, especially on the obverse, but there is a dull scratch under the chin, another from the temple to the earlobe, and shallow pitmarks on the top of the obverse. Glossy steel brown. The date is strong but the tops of UNITED STATES are fading into the rim above.



84. 1794 S-38 R5+ Basal State-1+. (ANACS slabbed as Poor-1) Glossy dark chocolate brown. There are a dozen or so very tiny pitmarks on each side plus some faint hairline scratches on the obverse, but basically this cent is just well worn. No verdigris or distracting marks. The date is worn away, but the chips left of the hair are visible and LIBERT, UNITED, the fraction, and parts of the wreath are all fairly clear. Ex Colonel Steven Ellsworth 8/12/02-Dread Green.



83. 1794 S-38 R5+ F15+. Sharpness VF35 with light corrosion covering the surfaces. No verdigris and the only contact mark is a barely visible rim bruise over the end of the pole. Rather glossy dark olive and steel brown with lighter brown and chocolate highpoints. The date is easily readable although it was not struck up very well, and similar weakness affects the opposing area at ES-OF. Otherwise everything is strong. The chips or lumps in the field left of the hair are strong. Breen's die state II. (In this cataloger's opinion, Breen has these die states reversed. The strong chips are the early die state and the weaker chips are the late, lapped die state.) Called VF35 net VF20 and tied for CC#6 in the Bland census. Ex John A. Schreuder 4/70-Del Bland-Dr. Dane B. Nielsen-Dr. Bob Shalowitz-Dr. C. R. Chambers 11/83-Bob Matthews, Superior 5/28/89:168-Dan Holmes.



85. 1794 S-43 R2+ F15+. Sharpness VF20 with a few too many light contact marks on the obverse for the sharpness grade. The only notable mark is a very light hairline scratch from the tip of the nose to the tip of the chin then down to the pole where it enters the neck. Otherwise this cent is choice with excellent eye appeal. Glossy light to medium brown. EDS, Breen state II.

The 2006 EAC Convention Sale, May 6, 2006

86. 1794 S-43 R2+ AG3+. Glossy medium brown. The obverse is slightly sharper with minor roughness in the fields while the reverse is weaker but relatively free of defects. Mostly this cent is just well worn. The date is clear and legends are readable except for S-OF-AMER and ONE CENT, which are worn away. LDS, Breen state V. The die crack up through the U in UNITED is very strong.



87. 1794 S-54 R3 F12. Sharpness VF20 with very light roughness under an attractive glossy two-tone patina of light to medium brown highpoints and greenish light olive brown protected areas. No verdigris and only a few contact marks, including a very light rim bruise off the chin, a couple more just right of the fraction, and a couple well hidden hairline scratches inside the wreath. MDS, Breen state III. Has a nice look for the grade in spite of the defects.



88. 1794 S-55 R2 F12+. (ANACS slabbed VF20) Sharpness VF20 but there is a small spot of corrosion in the field close before the lips, another at the rim over the C in AMERICA, plus some light contact marks on both sides, including a thin vertical nick in the middle of the neck. Rather glossy dark steel brown and chocolate (but a proper brushing may bring out a more attractive glossy surface). The date and legends are strong. EDS, Breen die state I.

89. 1794 S-55 R2 VG8. Sharpness near VF20 with light roughness covering the obverse plus a few shallow pitmarks at the lowest curls. The reverse is mostly smooth but there are traces of greenish verdigris at the dentils under the fraction. Slightly glossy reddish chocolate brown with medium brown toning covering the highpoints, the two-tone contrast accenting the details. The date and legends are clear. EDS, Breen state I.



90. 1794 S-55 R2 G6. Doubled Edge Lettering. Sharpness several points higher, especially on the obverse, but there is a small rim dent opposite the chin and patches of shallow corrosion on the reverse, strongest at ES-O. Rather glossy medium brown with splashes of darker olive on the obverse and patches of reddish chocolate on the reverse. The date is easily readable and the legends are complete except for UNIT, which is weak or missing. The edge lettering is doubled, this planchet having passed through the Castaing machine twice. There is a 15 degree separation between the impressions resulting in a spacing of ONEONE followed by the remainder of the lettering so two complete renditions of the lettering are present. A really neat error, much rarer than the usually seen blundered edge with incomplete lettering such as TWO HUNDRED A DOLLAR.



91. 1794 S-57 R1 G5+. Close to G6. Glossy bluish steel brown and chocolate. The reverse show extremely fine roughness in the fields but overall the surfaces are decent for the grade. The only marks are a dull, shallow scratch down between the N & E in ONE and a thin diagonal one slanting through the C in CENT. The date is clear and the legends are complete except for weakness at the top of the reverse. Rare EDS, Breen die state I.

92. 1794 S-59 R3- G5. Sharpness F15 but covered with uniform moderate granularity. No verdigris or marks. Matte dark olive brown. The date and legends are strong. M-LDS, Breen state IV.



93. 1794 S-62 R4+ VG8+. Sharpness F15 or slightly better but covered with microscopic granularity. The color is a decent and slightly glossy medium brown and light olive in spite of the fine roughness, and the only meaningful marks are a diagonal nick on the neck and a small rim bump at the I in AMERICA. Rare EDS. Breen state I, before the cud break from the rim left of the portrait. The date and legends are complete and clear.

94. 1794 S-65 R1 G6. (NGS slabbed as VG8 porous/scratched) A couple points sharper with some very light corrosion and verdigris showing on both sides, mostly in the protected areas. There are old hairline scratches on both sides, especially on the reverse. Dark olive and steel brown. The date is strong and the legends are complete except for weakness at the bottom of the reverse. MDS.



95. 1794 S-65 R1 VG10. A couple points sharper with a few light nicks and shallow scratches on the portrait and a light rim bruise at the end of the pole. Attractive glossy medium brown. The date and legends are strong. LDS, Breen state IX, with a bisecting die crack on the reverse causing die failure at both ends.

96. 1794 S-67 R3 VG10. Sharpness VF20 but there is very fine roughness above the head and more significant tiny pitmarks scattered about the reverse, strongest at STATES OF. Most of the tiny pitmarks contain a speck of dark greenish verdigris. Otherwise the planchet is mostly smooth with glossy olive brown and light chocolate toning. The only contact mark of any consequence is a small rim bruise at IC in AMERICA. LDS, Breen state V.



97. 1794 S-69 R3 F15+. Sharpness VF20 but there is a "D" very lightly scratched into the field under the cap and an "S" similarly etched into the neck. Otherwise the surfaces are smooth and quite attractive, the only circulation mark being a light rim bruise over the B in LIBERTY. Glossy medium brown with a couple small spots of darker reddish chocolate brown toning in the field under the cap, and the D & S scratched into the obverse are visible mostly because they show a darker steel color in their fine lines. The date and legends are bold. MDS, Breen state II. Ex Coin Galleries 11/83:1764-Jim McGuigan 1/84-Wes Rasmussen, Heritage 1/13/05:3080.



98. 1794 S-70 R2- VF30. Ten points sharper but lightly cleaned and nicely retoned a frosty chocolate brown with light bluish steel overtones in protected areas of the reverse. The surfaces are attractive, but a strong glass reveals uniform extremely fine granularity covering the fields. M-LDS, Breen state III. Ex Doug Bird.

99. 1794 S-72 R2 G4. Head of 1795. Very slightly sharper but there is some shallow roughness at the 794 in the date, more in the field before the face, and a few light rim bruises on each side, none significant. Glossy chocolate brown. The date and legends are all readable. M-LDS, Breen state IV.

100. 1794 NC-11 R7+ Fair-2. Sharpness VG10 or so but moderately corroded and beat up. No verdigris, and the roughness is light enough to allow the date and reverse legends to remain visible. The beating consists mostly of knocks on the rim, although there is a dull dent at NE in ONE that causes a bit of a bulge on the obverse. A strong knock to the rim at the top of the cap is the biggest eye-catcher, but there are several viable candidates on the reverse as well. The good news is that there are ample, clear details remaining to be certain of the attribution, and having all 4 digits of the date visible is a big plus. Dark olive with lighter coppery highpoints. Weight 201.3 grains. A new discovery and one of only 4 known. The census is 8-7-3-2.

The 2006 EAC Convention Sale, May 6, 2006

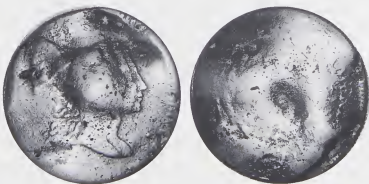
101. 1795 S-74 R4- G4. Lettered Edge. (NGS slabbed G4) Slightly sharper but a bit rough. No verdigris or significant marks. The date is strong and the legends are readable. Slightly glossy chocolate brown. Not bad for the grade, and the bold date is a plus.

102. 1795 S-75 R3 AG3. Lettered Edge. A couple points sharper but the rims were tapped all the way around leaving a mostly continuous series of light rim bruises on both sides. Otherwise the surfaces are quite nice, smooth and free of significant marks. Glossy medium brown. The date and legends are clear.



103. 1795 S-76b R1 VG7. Plain Edge. Clipped Planchet. Sharpness VF20 but lightly corroded, mostly at the top of the obverse. No verdigris or significant contact marks. Slightly glossy medium brown with chocolate brown toning in protected areas. The date and legends are strong. E-MDS. Breen state III, with a curved planchet clip at the dentils left of the cap.

104. 1795 S-76b R1 G5. Plain Edge. (NGS slabbed as VG8) The obverse is slightly better and the reverse slightly weaker. No defects, just worn. Glossy medium brown with darker olive brown toning in protected areas of the obverse. The date is clear and the legends are mostly visible.



105. 1795 S-76b R1 Fair-2. Plain Edge. Double Struck. Considerably sharper in some places but damaged by several dull dents that bent the planchet and obliterated many of the details. The 95 remain readable and at most half the legend remains visible. Still a rather glossy chocolate brown with medium brown highpoints. Double struck with an offset of about 2 millimeters to K-9 between the impressions. The doubling is clearest along the profile from the forehead to the bust tip.



106. 1795 S-77 R3+ VG10+. Plain Edge. Glossy medium brown with dark chocolate brown toning in protected areas. Nice eye appeal for the grade. No roughness and only minor marks, including a small nick in the hair under the T in LIBERTY and a couple very light contact marks on the neck. The date and legends are strong. MDS. Breen state III.

107. 1795 S-77 R3+ AG3. Plain Edge. (NGS slabbed as VG8 corroded/pitted) Sharpness VF20 but covered with moderate to heavy corrosion, strongest on the obverse where many of the details are distorted by the roughness. The date remains readable and the legends are complete and relatively strong. No verdigris or notable contact marks. Dark chocolate brown. EDS.

108. 1795 S-78 R1 G6+. Plain Edge. Sharpness VG10 but covered with fine porosity. No verdigris, but there are a couple fine diagonal pincratches down from the chin and neck and a shallow planchet void on the O in OF. The date is strong and the legends are complete. Slightly glossy dark steel brown with lighter steel brown highpoints. E-MDS. Breen state II.



109. 1795 S-78 R1 VG8. Plain Edge. Off Center. Sharpness F12 or slightly better with some minor corrosion under the glossy reddish chocolate and light olive brown patina. There are traces of light verdigris in some of the protected areas plus dull scratches above and below the date and a few more light ones in the field before the face. The scratches are quite old and blended into the natural patina, which is relatively thick. The date and legends are clear. Struck 10% off center to K-9 leaving the tops of NITED tight to the rim. MDS. Breen state III.



110. 1795 S-78 R1 VF35. Plain Edge. Slightly sharper but there is a small planchet void above the R in LIBERTY, as struck, plus a small rim nick just left of this flaw and a light rim bruise over the adjacent T. A small spot of very fine carbon dust left of the O in OF and a tiny pinprick well above the N in ONE are the only additional defects. Otherwise the surfaces and eye appeal of this cent are excellent. E-MDS, Breen state II.



111. 1796 S-81 R3-VG10. Liberty Cap. Rotated Reverse. A couple points sharper but there is a dull scratch or very long nick in the hair left of the forehead and three sharp nicks in the wreath under TA in STATES. Otherwise the surfaces and eye appeal of this piece are excellent. Glossy light olive and steel brown with tiny splashes of reddish chocolate toning at ITED ST. The date is bold and the legends are strong, although CE in CENT shows the usual weakness. LDS, Breen state II, with the reverse rotated 50 degrees CCW. Ex Henry C. Hines 8/9/1935-Willard C. Blaisdell 1971 (via Del Bland)-Lillian S. Willins 1/11/92 (via Bill Noyes)-March Wells.



112. 1796 S-83 R4-G5+. Liberty Cap. Glossy olive brown with lighter steel brown toning on the highpoints accenting the details. No notable defects other than a very light rim bruise opposite the eye which can help identify this cent. The date is clear and the legends are easily readable. MDS, Breen state II.



113. 1796 S-84 R3 G6. Liberty Cap. Off Center. A few points sharper with extremely fine roughness under a slightly glossy dark greenish olive patina. The roughness is strongest in the field under the chin. There is a dull scrape from the shoulder down to the 9 in the date plus a couple nicks right of the date and a small rim bruise over the first T in STATES. The date is strong and the legends are complete. MDS, Breen state II. Struck at least 10% off center to K-8.5 leaving the tops of UNITED off the planchet. Ex Superior 7/27/03:18.

114. 1796 S-85 R5- AG3. Liberty Cap. Sharpness G6 but uniformly granular. The date is complete but weak due to the roughness and the legends are clear except for weakness at OF. Dark olive and steel. No verdigris or marks.



115. 1796 S-89 R3+ VG7+. Liberty Cap. Rather glossy chocolate and olive brown with a splash of darker olive toning at RT in LIBERTY. No corrosion or roughness. The notable marks are a light rim bruise under the bust tip and a small dig or planchet chip inside the left loop of the wreath ribbon. The date is bold and the legends are strong. MDS, Breen state II.

116. 1796 S-89 R3+ AG3+. Liberty Cap. (NGS slabbed as G4 porous) Slightly sharper but covered with very light roughness. Dull very dark olive and steel. A horizontal nick left of the upper lip is the only notable mark. The date is strong and the legends are mostly visible. A solid G4 or better on the obverse but only AG3 on the reverse.



117. 1796 S-90 R5+ G5. Liberty Cap. Upset Reverse. Close to G6 but the fields and protected areas are covered with microscopic roughness. No verdigris or notable marks other than a small pinprick just right of the base of the 6 in the date. The date is clear and the legends are complete except for weakness at OF. The reverse is rotated 170 degrees CCW. Ex Superior 2/2/92:766.

118. 1796 S-94 R5+ Basal State-1. Draped Bust. A point sharper but covered with fine granularity under a slightly glossy very dark steel and olive patina. A rim dent before the face and another left of the lower curls are the notable marks. The top of the date is weak and the bottom is gone. ONE CENT is clear and much of AMERICA and most of the wreath remain visible. Ex Dave Palmer 2/26/97-Dan Holmes.



119. 1796 S-96 R6 Fair-2. Draped Bust. A couple points sharper but lightly corroded and smoothed to minimize the roughness. The smoothing brought out the details by lightening the highpoints. No verdigris or contact marks. The date is weak but all 4 digits are visible, and the legends are complete as well, although none of those letters is strong. EDS, Breen state I, before the bisecting reverse die crack. Not very attractive but seldom available in any grade. Ex Henry T. Hettger.

120. 1796 S-100 R5+ AG3. (ANACS slabbed as AG details net Fair-2) Rather glossy dark olive brown with lighter steel brown toning covering the highpoints. The two-tone appearance accents the details and greatly aids the eye appeal. The date is strong and the legends are clear except for weakness at the bottom of the reverse due to the slightly uneven strike. The rims are very lightly abraded for some reason, but the effect of this defect is minimal and not worthy of a grade deduction at this level. The ANACS guys were just a bit rough on this cent.

121. 1796 S-101 R5- AG3. Draped Bust. A point or two sharper, especially on the upper half of the obverse and lower half of the reverse, but covered with uniform fine to moderate granularity. No verdigris. The date area was smoothed a bit to bring out the digits, and a small rim nick right of the fraction is the only other mark. Slightly glossy dark olive brown. The date is weak but readable, and the legends are complete except for TES OF.

122. 1796 S-102 R4 AG3+. Draped Bust. A point or two sharper but moderately granular and there are some old scratches on both sides, mostly on the reverse. No verdigris, and a light rim bruise under the bust tip is the only other notable defect. The date is clear and the legends are complete. Dark olive and steel. EDS, Breen state I.



125. 1796 S-114 R5 G6. Draped Bust. Very slightly sharper with a patch of pitting at the top of the head and around LIBER. Otherwise there is only trivial roughness here and there and a small dig at the front junction of the bust and neck. Glossy chocolate brown with the highpoints a couple shades lighter than the protected areas. The date is full but not strong while the legends are complete and clear. Very rare terminal die state, Breen state IV, with strong cud breaks at TY and left of the L. Removed from an NCS slab graded VG details corroded (NCS label included). Ex C. Douglas Smith 11/30/68-Jules Reiver, Heritage 1/24/06:19301.

123. 1796 S-112 R4+ VG7. Draped Bust. Sharpness F15 but covered with fine to moderate granularity. No verdigris, but there is a dull scrape just right of the date, a dull rim nick left of the date, another behind the head, and two more at RTY. The only notable marks on the reverse are some fine hairline scratches at ONE CENT. Slightly glossy dark olive brown with lighter steel brown highpoints. The date and legends are all strong, although ONE CENT is starting to weaken thanks to the usual swelling in that area. MDS.



126. 1796 S-116 R5 G6. Draped Bust. A couple points sharper with patches of light corrosion on both sides, but the only significant one is at AMER1 into the wreath below. There is a shallow void in the planchet on the rim under the I in the date, and this may be the result of corrosion. A thin nick in the field over the bust and a light rim bruise at the T in LIBERTY are the notable signs of contact. The date and legends are clear. Slightly glossy dark steel and olive with a few small areas of reddish brown toning from shallow verdigris. LDS, Breen state II. Ex Superior 5/29/05:1270.



124. 1796 S-114 R5 G4. Draped Bust. Glossy medium brown and chocolate. Smooth with only a few marks, including a dull but rather strong dig in the wreath left of the O in ONE plus lighter ones at IT in UNITED and over the left wreath stem. The date and legends are easily readable, although the tops of AMERICA flow into the rim. EDS, Breen state I.

128. 1797 S-122 R5+ Fair-2. Slightly sharper but lightly corroded overall with patches of stronger roughness on both sides, especially at the top of the obverse. The date is clear and most of the legends remain visible, but this cent is rather ugly, even for this grade. Dull steel brown and chocolate with patches of dark olive in protected areas. Probably MDS, but certainly not later.



129. 1797 S-124 R5+ G6. Sharpness VF25 or better with moderate porosity covering much of both sides. No verdigris or marks. Great detail, but the pitting destroys the eye appeal, especially on the obverse where the density of pitting is more severe. This would have been a monster S-124 without the pitting, and if a frog had wings, blah-blah-blah. M-LDS. Breen state IV late.



130. 1797 S-125 R5 G5. Slightly sharper but a bit rough leaving the surfaces dull. No verdigris or notable contact marks, but there is some shallow dark crud in protected areas on the lower half of the reverse. Dark olive brown with medium brown highpoints. LDS, Breen state III. The swelling at the 97 and bust is severe.

127. 1796 NC-4 R5+ G4+, Draped Bust. A few points sharper but slightly rough. No notable verdigris or distracting corrosion, and the only contact marks are trivial as well, but there is just too much "stuff" going on to ignore it all. The date is nearly complete, just the bottom edge of the digits fading into the rim below. The legends are complete except for the tops of LIB. Actually rather decent for the grade. Rather glossy dark olive brown with medium brown highpoints, and the contrast accents the details. EDS, Breen state I. Ex Jim Long 3/17/89-Dan Holmes.



Rare Early Die State S-127



132. 1797 S-128 R3- F12. M over E in AMERICA. Sharpness VF25 with several dull rim nicks on both sides, and the ones at the top of the obverse were smoothed. In addition, there are some nicks and light scratches scattered about both sides and a small dig on the ribbon end right of the fraction. The surfaces are mostly smooth but you can find specks of greenish verdigris on the reverse. Glossy steel brown and chocolate with hints of reddish brown toning on the reverse. LDS. Breen state IX. The M over E feature is clear. Called VF25 net F15 by Bland. Ex Ed Kucia 9/3/88-Dan Holmes.



131. 1797 S-127 R4 F15. Five points sharper with a few very light hairline scratches in the field before the portrait and traces of extremely fine verdigris dusted into protected areas. There is a dull rim nick right of the Y in LIBERTY and another at the U in UNITED. Rather glossy olive and chocolate brown with reddish brown toning in protected areas of the reverse. Rare EDS, Breen state I.

133. 1797 S-130 R2 VG7+. Sharpness VG10 but there is some very fine roughness along the right edge of the obverse and some more in the center of the reverse. No verdigris, and the only significant contact mark is a vertical scratch near the rim in the roughened area before the portrait. Otherwise the planchet and eye appeal are nice for the grade. Glossy steel and light olive brown. LDS. Breen state V. The die break behind the head is strong.

1797 S-133 Ex Bob Matthews



134. 1797 S-133 R5 VG8+. **Stemless Wreath.** Sharpness VF25 with patches of moderate pitting on the obverse, strongest at the top edge of the bust. No verdigris, and the only contact mark of any consequence is a small group of faint hairline scratches from the second S in STATES down to the O in ONE. Slightly glossy very dark olive and steel. The details are bold. Comes with an edge that shows some diagonal reading, Breen's edge V. Ex Hollinbeck Kagin Coin Co., 1964 ANA Sale, lot 62-Richard Picker 12/7/64-Jackson C. Storm 8/1/84-Bob Matthews, Superior 5/28/89:285-Chris McCawley 12/13/90-R. S. Brown, Jr., Superior 1/27/96:189.

135. 1797 S-134 R4 Fair-2. **Off Center.** Slightly sharper but covered with fine roughness and the obverse was lightly cleaned. Reddish chocolate with coppery highpoints on the obverse thanks to the cleaning and dark steel highpoints on the reverse. Later die state showing a clear die crack through the E in AMERICA and what may be another bisecting horizontal die crack passing from rim to rim under CENT. Can't be sure due to the roughness and grade. Struck 5-10% off center to K-7 leaving the lower third of the date off the planchet. An interesting but ugly cent.

136. 1797 S-137 R2 VG7. Slightly sharper but there is some extremely fine roughness and tiny contact marks on both sides. The obverse is a rather glossy chocolate and steel brown while the reverse is a darker shade of olive and steel. The date is bold and the legends are strong. E-MDS, Breen state II.

137. 1797 S-138 R1 G5. Rather glossy dark steel brown. Some minor marks, including a tiny rim nick left of the L in LIBERTY. The date is strong and the legends complete except where obliterated by die swelling on the reverse. LDS, Breen state VII. Ex 1992 ANA Young Numismatist Charity Auction at the Summer Seminar-John D. Wright.



138. 1797 S-139 R1 G4. **Double Struck.** Several points sharper, especially on the reverse, but moderately rough under a rather glossy dark chocolate brown patina. No verdigris, and the only contact marks are some fine hairline scratches on the portrait, all nicely blended into the patina. Double struck. The first impression was slightly off center to K-8 and the second was properly centered on the planchet and rotated about 100 degrees CCW relative to the first. Bold undertype from the first impression remains clearly visible on both sides, including a strong and complete 1797 date in the field behind the head. An impressive mint error in spite of the relatively low grade.

139. 1797 S-140 R1 VG8. (NGS slabbed as F12 **pitted/surface damage**) Sharpness near VF35 but covered with uniform fine roughness under a dull dark olive patina. Traces of reddish verdigris show on the reverse. In addition, there are many small nicks or digs scattered about both sides. There is obvious swelling on the bust tip and OF. Nice detail but ugly.

140. 1797 S-140 R1 VG7. Sharpness F12 with uniform very fine roughness under a slightly glossy dark olive brown patina. No significant verdigris and only a couple faint hairline scratches over the bust tip. LDS with strong swelling at the bust tip and at OF.



141. 1797 S-142 R5+ VG8. Sharpness near F15 with light roughness covering the fields and patches of slightly stronger corrosion on the reverse, especially at ED in UNITED and over RIC in AMERICA. There are specks of light greenish verdigris on the reverse, mostly in the rough area at ED, plus some dull nicks on the obverse rim. Dark steel with lighter steel brown toning on the highpoints. The date is bold and the legends are strong.

142. 1797 S-142 R5+ AG3. Slightly sharper but covered with fine to moderate porosity. No verdigris or notable marks. The date and legends are weak but easily readable, although STATES OF are faint. Slightly glossy steel brown and chocolate. Rare LDS. Breen state II, with strong die rust at the L in LIBERTY.

143. 1797 S-143 R5 AG3. Stemless Wreath. A couple points sharper but covered with uniform moderate corrosion. No marks or verdigris. The date and legends are easily readable, although the fraction and ICA are weak. The stemless wreath feature is visible but not strong. Dark olive with chocolate brown highpoints.



144. 1797 NC-3 R6- VG8. Sharpness near VF20 but covered with fine granularity that's mostly hidden under a glossy dark olive brown patina. The highpoints are a few shades lighter chocolate and steel brown. No verdigris. There are a dozen tiny pitmarks in the hair and a short scratch in the field left of the hair ribbon. The date and legends are strong except for CENT, which is visible but weak. MDS, Breen state II. Called VF20 net VG8 and CC#2 in the Bland census. Noyes says F15 net VG7 and tied for CC#3. Ex Lloyd M. Goldsmith (Lakeland Coin Exchange, Florida)-Del Bland-Jack Beymer 6/4/79-R. E. Naftzger, Jr. 2/23/92-Eric Streiner-Chris McCawley 3/97-Jack Wadlington (The San Diego Collection).

145. 1797 NC-5 R6 VG8. A couple points sharper with microscopic roughness under a glossy chocolate and olive brown patina. The obverse may have been very lightly smoothed long ago to minimize the roughness, as that side appears a bit smoother than the reverse. No verdigris, and the eye appeal is decent for the grade. The only marks are some light rim bruises at BE and T in LIBERTY and left of the lower curls, plus a shallow depression in the field near the dentils before the nose. The date is complete but not strong due to a slightly weaker strike in that area, and everything else is clear. MDS, Breen state II. Called VG8 and tied for CC#6 in the Bland census. Noyes says net VG7 and CC#9. Ex Randle Fairchild (via Del Bland) 10/10/90-Dr. Phil Ralls 4/17/04-Dan Holmes.



146. 1798 S-147 R5 G5. Style I Hair with Large 8. Glossy dark olive with lighter chocolate toning on the highpoints, the reverse lighter than the obverse. The date and legends are complete. No significant marks, but it might benefit from a bath.



148. 1798 S-149 R5+ G6. Style I Hair with Large 8. Sharpness VG10 with very fine corrosion in the fields plus a patch of slightly stronger roughness on the bust down to the 98 in the date. There are three sharp pinscratches on the right side of the obverse, a dig on the hair ribbon, and a thin planchet void in the field left of the lower curls. The reverse has a few smaller marks as well, including rim nicks at the U in UNITED and second S in STATES. Cleaned and partially retoned glossy light olive and bluish steel brown with coppery light brown remaining on about a third of the obverse. The date and legends remain clear. EDS, Breen state I.



147. 1798 S-148 R2 VF25. Style I Hair with Large 8. Sharpness EF40 with too many nicks for the sharpness grade. Some notable marks are two long parallel nicks on the top of the bust and a dull one just right of the D in UNITED. The planchet is completely void of corrosion or verdigris. Glossy light olive and steel brown. The date and legends are strong. E-MDS, Breen state II.



149. 1798/7 S-150 R5 VG7. Style I Hair. Overdate 8 over 7. Very slightly sharper with minor roughness covering the fields and protected areas. No verdigris or contact marks. Slightly glossy medium brown with darker chocolate and olive in the protected areas. Nice eye appeal. LDS, Breen state IV.



150. 1798/7 S-151 R3+ VG8. Style I Hair. Overdate 8 over 7. Sharpness F15 but covered with uniform fine granularity that leaves the surfaces matte rather than glossy. Lightly cleaned and retoned steel brown. E-MDS, Breen state II.



151. 1798/7 S-151 R3+ VG8. Style I Hair. Overdate 8 over 7. A couple points sharper with a patch of corrosion at ES-OF, and the verdigris has been partially scraped off (with no special talent). Otherwise the surfaces and eye appeal of this cent are rather nice. Glossy medium brown and chocolate with dark olive brown toning in the protected areas. Probably lightly cleaned to lighten the highpoints. Very late die state, Breen state VIII late, with all the cracks described by Breen plus a clear and strong cud break connecting the E in AMERICA to the dentils above. The date and overdate are bold and the legends are strong.

153. 1798/7 S-152 R2+ VG7. Style I Hair. Large Overdate 8 over 7. Slightly sharper but covered with extremely fine roughness. No verdigris or significant contact marks. The obverse is a slightly glossy dark olive with lighter steel brown highpoints while the reverse is the same color but shows very little if any gloss. The date and overdate are strong and the legends are complete. MDS.



154. 1798 S-153 R3 VG10. Style I Hair with Large 8. Sharpness F15 with fine roughness over much of the planchet, including some obvious corrosion at the rim before the portrait. There are specks of greenish verdigris in a couple of those rough areas. The only significant contact mark is a light rim bruise at ED in UNITED. Slightly glossy olive brown with chocolate toning on the highpoints. MDS, Breen state V. The date and legends are strong.



155. 1798 S-157 R2 G6. Style I Hair with Small 8. Has the details of a slightly higher grade but the surfaces show minor roughness, strongest under ER in AMERICA. No marks or verdigris. Rather glossy light steel brown and chocolate. LDS, Breen state IV. The date is strong and the legends are clear.

152. 1798/7 S-152 R2+ VF25. Style I Hair. Large Overdate 8 over 7. Sharpness VF35 with extremely fine roughness under a highly glossy dark olive and chocolate brown patina, the highpoints a lighter shade of steel brown. No verdigris and only trivial marks, including a tiny pinprick just right of the numerator, which can serve as an identifying mark for this cent. MDS, Breen state II. The overdate is bold.

Rare State V 1798 S-158



156. 1798 S-158 R4 VG7. Style I Hair with Small 8. Very slightly sharper but covered with extremely fine roughness that's well hidden under a glossy dark olive patina. No verdigris, and the only marks are two tiny nicks on the neck. The date and legends are clear except for weakness at D-ST and MERIC due to die failure on the reverse. Extremely rare LDS, Breen state V, with a strong cud break at IT in UNITED. Ex Anderson Dupont, Stack's 9/54:209-Willard C. Blaisdell 1/9/71-Jules Reiver, Heritage 1/24/06:19381 (where incorrectly called Breen state VI, which has a much larger cud break at ITED).



157. 1798 S-159 R3+ F12+. Style I Hair with Small 8. Sharpness VF20 with too many light nicks for the sharpness grade. None of these nicks is significant, but there are too many to ignore. The best identifying marks are very light rim bruises at BE, T, and just right of the Y in LIBERTY. The date and legends are strong. Glossy medium brown speckled with darker olive brown. MDS, Breen state V.



158. 1798 S-162 R4 VG7. Style I Hair with Small 8. A point or two sharper with microscopic granularity covering both sides. No verdigris and only a few minor contact marks, including a tiny rim bruise opposite the neck and a small rim nick over AT in STATES. Slightly glossy bluish steel and chocolate, both sides lightly cleaned long ago. MDS, Breen state II. The date and legends are bold.



159. 1798 S-165 R4 VF25. Style II Hair with Large 8. Ten points sharper with microscopic specks of greenish verdigris over the N in ONE and under the fraction, but it takes a good glass to see them. Otherwise the surfaces are smooth and the only notable mark is a dull rim nick at the F in OF. Lightly cleaned and retoned a glossy chocolate and darker steel brown with some lighter brown toning in protected areas of the obverse. Decent eye appeal in spite of the minor defects. MDS, Breen state II, with the reverse slightly misaligned to K-12. Called net VF25 and tied for CC#4 in the Bland census. Noyes says tied for CC#5. Ex Darwin B. Palmer 9/17/72-C. Douglas Smith-Dr. Robert A. Schuman-Superior 5/25/03:454.

The 2006 EAC Convention Sale, May 6, 2006

160. Pair of 1798 Cents. S-160 R3+ AG3. Style I Hair with Small 8. S-173 R3- G4. M-LDS. The first is sharper with a clear date but minor roughness while the second is smooth but has a weak date and everything else clear. Lot of 2 coins.

161. 1798 S-166 R1 VG8. Style II Hair with Large 8. A couple points sharper with several nicks on the obverse and minor roughness left of the date. Lightly cleaned and retoned glossy dark steel brown with traces of reddish chocolate in a couple protected areas. MDS. Breen state II, with the reverse rotated 25 degrees CCW. Date and legends are strong.



162. 1798 S-166 R1 VF35. Style II Hair with Large 8. Attractive glossy chocolate brown with frosty luster showing in some of the protected areas. Virtually flawless, a small nick near the dentils left of the hair ribbon offers the best identifying mark. LDS, Breen state VI, with the reverse rotated 35 degrees CCW. Struck very slightly off center to K-7. Nice eye appeal for the grade.



163. 1798 S-166 R1 Fair-2. Style II Hair with Large 8. Perhaps a bit sharper but covered with fine porosity. No verdigris or marks. Nothing special except that it appears to be a later die state than Breen state VI with a cud break affecting the left side of the denominator. The date is weak but readable and at least two thirds of the reverse remains visible.



164. 1798 S-170 R3 VF20. Style II Hair with Small 8. Sharpness EF40 or slightly better but covered with uniform microscopic porosity. No marks or verdigris. Cleaned and retoned a slightly glossy dark steel with some lighter brown mixed in on both sides. EDS, Breen state I, with the reverse rotated 25 degrees CCW.

165. 1798 S-170 R3 G5. Style II Hair with Small 8. Lightly cleaned and retoned glossy dark steel brown and chocolate. There is a dull nick in the field before the throat and a small rim dent left of the L in LIBERTY. Otherwise smooth and free of notable defects. LDS, Breen state IV. The die crack down through the T in LIBERTY is clear. Struck unevenly with the lower part of the obverse and upper right portion of the reverse very weak while everything else is clear.

166. 1798 S-173 R3- G6. Style II Hair with Small 8. Rotated Reverse. Close to VG7 but there is a dull scratch through the hair ribbon down to the lower curls and a faint one along the tops of ENT in CENT over to the R in AMERICA. Otherwise nice for the grade. Slightly glossy steel brown with darker chocolate toning in protected areas. M-LDS, Breen state VI. The cud break over ERTY is clear. Struck unevenly. The date is weak but readable with similar weakness at OF AM but everything else is clear. The reverse is rotated 55 degrees CCW, which probably accounts for the uneven strike. Ex John D. Wright.

167. 1798 S-173 R3- G4. Style II Hair with Small 8. The obverse is AG3 while the reverse is G5. Rather glossy chocolate brown with specks of darker olive brown toning on the obverse. The obverse is covered with very fine hairline scratches but the reverse is free of marks. No corrosion. Rare terminal die state, Breen state VIII, with a clear cud break at LI. The date is weak due to an uneven strike. Ex Jonathan Kern 4/84-John D. Wright.



168. 1798 S-173 R3- VF20. Style II Hair with Small 8. Sharpness VF25 with some nicks on the obverse and a rim dent at the second S in STATES, plus a dull rim nick at the F in OF. No corrosion or verdigris. Glossy chocolate and light olive brown. LDS, Breen state VII. The cud over ERTY is strong, a die crack outlines the forming cud over LI, and the reverse is rotated 60 degrees CCW.

169. 1798 S-177 R5- F15+. Style II Hair with Small 8. Clipped Planchet. Five points sharper with extremely fine granularity under a glossy dark olive brown patina. The highpoints are a few shades lighter than the protected areas, and the overall eye appeal is rather nice for the grade. No verdigris, and the only marks are some small rim nicks at the top of the obverse, a couple faint hairline scratches on the neck, and a small planchet depression in the field off the left base of the L in LIBERTY. The date and legends are strong. LDS, Breen state V, with a patch of strong die rust right of the bust tip. In addition, there is a small planchet clip left of the middle curls and at the opposing dentils over ST.

Rare Late Die State 1798 S-178
Hair Style 2 with Reverse of 1796



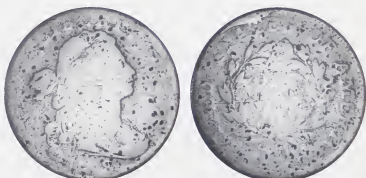
170. 1798 S-178 R5+ F15. Style II Hair with Small 8. Reverse of 1796. Sharpness VF35 with fine to moderate granularity covering the obverse, although it is difficult to differentiate between the ever-present die rust and any added environmental damage. The rims and reverse are not similarly affected, although they are not perfectly smooth. Both sides show some extremely fine verdigris dust but nothing that could pass for active corrosion. The obverse is a slightly glossy dark reddish chocolate and olive brown while the reverse is a few shades lighter and is void of the reddish tints. Very rare LDS, Breen state IV. All the die cracks described by Breen are clear, including the fine ones at the top of the reverse. Not perfect but rather nice for this very tough variety. Just try to find a choice one in any grade! Removed from an NCS slab graded AU details corroded.



171. 1798 S-179 R3 VF20+. Style II Hair with Small 8. E over Reversed E in AMERICA. Five points sharper with traces of very fine roughness on the reverse and a few very light hairline scratches on the portrait, mostly on the bust. No verdigris, and none of the defects is at all distracting. Glossy steel brown and chocolate. M-LDS. Breen state IV. The repunched E feature in AMERICA is clear. Ex Chris McCawley 3/97-Jack Wadlington (The San Diego Collection).

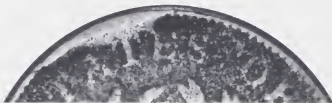


172. 1798 S-179 R3 G6. Style II Hair with Small 8. Boldly Double Struck. Several points sharper but covered with fine to moderate roughness under a slightly glossy dark olive and steel patina. No notable contact marks. Double struck. The initial strike was normal but the planchet failed to eject properly and a second strike 70% off center to K-3 left the 1 and some of the lower curls of the second strike in the field before the portrait of the first strike. The reverse, however, was struck against the obverse of a previously struck cent leaving an incuse impression of LI (from LIBERTY) right of the T in CENT. This brockage impression does not line up with the obverse impression left by the second strike as things were really jammed up at this point. A neat multiple error (double strike, off center, obverse brockage). The date and legends are clear for what remains of the initial strike. Ex Michael Arconti, Superior 7/27/03:39.



173. 1798 S-180 R5+ AG3+. Style II Hair with Small 8. A point or two sharper but both sides are covered with small nicks or pinpricks, strongest in the field before the portrait. Otherwise free of significant defects. Rather glossy dark olive and steel with medium brown toning covering the highpoints. E-MDS. Breen state II. The cud break at TATE is clear. The date is weak but readable and the legends are nearly complete.

174. 1798 S-180 R5+ AG3. Style II Hair with Small 8. A couple points sharper but dark and lightly corroded. No verdigris or significant marks. Very dark olive and steel with a matte appearance over most of the coin. E-MDS. Breen state II. The cud break over TATE is strong. The date and nearly all the legends are readable. Rare but ugly.



175. 1798 S-180 R5+ G4. Style II Hair with Small 8. A few points sharper but covered with uniform microscopic porosity. No marks or verdigris. Dark olive and chocolate with some gloss showing on the obverse highpoints. The date is easily readable but the lower part is weak, as usual due to the opposing cud break at TATE, which is strong on this example. The legends are complete except for weakness on the fraction. Breen state IV late with a sunken retained cud break over UN where the terminal cud break is about to occur. Only one other unconfirmed example has been reported with this intermediate stage of the final cud break.

The 2006 EAC Convention Sale, May 6, 2006

176. 1798 S-181 R3 VG7. Style II Hair with Small 8. A few points sharper with very fine granularity covering both sides. No verdigris and only a few contact marks, including a dull nick on the shoulder, a couple lighter ones in the field before the lips, and a couple dull rim nicks near the L in LIBERTY. Dull reddish steel and chocolate brown. The date and legends are clear. M-LDS. Breen state III late, with the reverse rotated 40 degrees CCW.



177. 1798 S-185 R2 VF20. Style II Hair with Small 8. Nice glossy chocolate brown. A shallow planchet flake on the neck, as struck, is the only notable defect. Excellent eye appeal for the grade. MDS, Breen state IV.

178. 1798 S-185 R2 G6. Style II Hair with Small 8. Slightly sharper but burnished and retoned glossy dark reddish steel brown and chocolate. No roughness and only a few light contact marks, including a nick in the drapery over the left side of the 8 in the date. LDS, Breen state VII, with the reverse rotated 20 degrees CCW. The date and legends are clear. Ex the "San Diego Junque Jar."

179. 1798 S-187 R1 VG10. Style II Hair with Small 8. A couple points sharper with a smoothed rim bump before the face. Otherwise the surfaces are smooth and show only a few minor marks. Lightly cleaned and retoned glossy steel brown and light chocolate. E-MDS, Breen state II. The date and legends are strong.

180. 1799/8 S-188 Electrotpe Copy F15. Overdate 9 over 8. Slightly sharper with microscopic roughness in the hair and center of the reverse. Easily identified by a small chip at the bottom of the first 0 in the denominator. Rather glossy dark chocolate brown with medium brown highpoints. A well-executed electrotpe copy showing no trace of underlying base metal, not even on the edge which is free of any seam as well. No doubt as to the copy status, however.

181. Donated Lot: 2 more bottles of "Jarhead Red" California red table wine. All proceeds to EAC.



182. 1800/79 S-193 R4 F12. Overdate 80 over 79. Style II Hair. Sharpness VF20 with a patch of very shallow porosity on the neck and bust, plus some dull, light scratches in the field behind the portrait and two more tiny ones under the 18 in the date. Glossy chocolate brown with medium brown toning on the highpoints. The overdate is bold. MDS, Breen state II. Called VF20 net F12 and tied for CC#13 in the Noyes census, his photo #37314. Ex Larry Briggs 1997-Jack Wadlington.



183. 1800/79 S-194 R3-VG7. Overdate 80 over 79. Style II Hair. A few points sharper with microscopic roughness under a slightly glossy dark steel brown and chocolate patina. No verdigris. One small nick right of the bust tip. The date and overdate are strong and the legends are clear. LDS, Breen state VIII, with cud breaks under the fraction extending to over the adjacent A.

Rare Terminal Die State 1800 S-198



184. 1800 S-198 R5+ AG3. A couple points sharper but there is very fine roughness under the rather glossy dark olive and steel brown patina. In addition, there is a dull pinch on the rim just left of the date. Otherwise free of significant defects. The date is not strong but it is full and easily readable and the legends are complete in spite of some weak areas. Extremely rare terminal die state, Breen state VI, with a strong cud break at MERI. Ex Joe Kane 3/12/82-Jules Reiver, Heritage 1/24/06:19456. Removed from an NCS slab graded G details damaged (NCS label included).

185. 1800 S-200 R3 G5. Lightly cleaned and retoned a glossy reddish chocolate brown on the obverse and lighter chocolate to medium brown on the reverse. The surfaces are smooth. A dull, shallow punchmark in the hair under LI, another in the field before the neck, and a rim nick at the M in AMERICA are the notable marks. MDS Breen state IV, with strong swelling that obliterates STAT. Otherwise the date and legends are strong. Ex John Ashby 5/80-John D. Wright.



186. 1800 S-202 R4+ G5+. Choice glossy chocolate brown with slightly lighter chocolate brown toning covering the highpoints. Smooth and virtually flawless. The only mark is a shallow, dull dent or planchet void in the field under the chin. A choice cent with outstanding eye appeal for the grade. M-LDS, Breen state VI, with heavy swelling obliterating most of STATES. The date and remainder of the legends are clear.

Rare Early Die State 1800 S-203



187. 1800 S-203 R3- VG7. Sharpness VG10 with very fine roughness under a glossy dark olive brown patina. The highpoints are medium brown, and the contrast helps accent the details and adds to the eye appeal. There are some old, very light hairline scratches in the patina as well, plus a more visible hairline scratch down from the E in LIBERTY to the earlobe plus a short scar in the field off the nose tip and a couple small rim nicks just right of the date. The date is strong and the legends are clear, although the denominator is weak. Rare EDS, Breen state II, with a single die clashmark at TES OF. Ex Superior 6/2000:192.

Late Die State 1800 S-203



188. 1800 S-203 R3- VG10. A couple points sharper with some light corrosion in the left obverse field. Otherwise smooth and free of notable defects. Glossy dark olive and steel with lighter steel brown highpoints. LDS, Breen state V. The date and legends are clear.



189. 1800 S-212 R3- EF40. There are some tiny contact marks under the T in CENT, and these marks barely break the natural patina. Glossy chocolate brown with a splash of darker olive toning at the lower curls and some reddish chocolate toning in protected areas of the reverse. Rare LDS, Breen state VI, with three strong die cracks on the upper part of the obverse. A very nice example of this tough die state.

190. 1801 S-218 R5+ G6. 3-Error Reverse. Slightly sharper but lightly cleaned and retoned glossy reddish dark chocolate and steel brown. There are a couple very light rim bruises, including one at ER in AMERICA, and the planchet is ever-so-slightly bent. The only other defects are a few tiny pinpricks at AT in STATES. The date is clear and the 3 reverse die-cutter errors are strong. EDS, Breen state I. Not perfect but still a rather nice example of this rare and popular die variety.



191. 1801 S-219 R2 VG8. 3-Error Reverse. Glossy chocolate brown with a hint of reddish chocolate toning in protected areas. The notable marks on otherwise nice surfaces are a sharp rim nick at the T in LIBERTY and a few pinpricks or tiny planchet chips at S-OF. The date is strong and the 3 reverse errors are bold. M-LDS, Breen state V. A decent example of this very popular "Redbook" variety.

192. 1801 S-220 R3 G4+. Error Fraction 1/000. Close to G5 but there are some hairline scratches on both sides. Smooth, corrosion-free surfaces. Glossy medium brown and chocolate. EDS, Breen state I. The error fraction is clear.



193. 1801 S-223 R1 VG8. Error Fraction 1/000. A couple points sharper with a shallow planchet void under the bust tip, as struck, and some dull rim nicks at the bottom of the reverse. Glossy steel brown and chocolate. The date and legends are strong, and the error feature of the fraction is clear. Ex the "San Diego Junque Jar."



194. 1801 S-223 R1 F12. Error Fraction 1/000. Nice glossy chocolate brown. Smooth surfaces with only minor contact marks, including microscopic pinpricks around the date. MDS, Breen state III, with a strong cud break at RT. The date and legends are bold, including the error fraction.



195. 1801 NC-3 R6+ VG8. Error Fraction 1/000. Sharpness VF20 but dark and covered with fine to moderate granularity. No contact marks or verdigris. The obverse is a rather glossy dark olive and steel while the reverse is a dull version of the same color. The date is bold and the legends are strong, including the error fraction. Called VF20 net VG8 and tied for CC#1 honors in the Bland census. Noyes says VF20 net G6 and tied for CC#3, photo #36684. Either way this is an important cent. Ex Chris McCawley 4/19/97-Jack Wadlington (The San Diego Collection)



196. 1801 NC-3 R6+ Fair-2. Error Fraction 1/000. Slightly sharper but covered with uniform fine to moderate granularity. No verdigris or notable contact marks. The date is clear and the error fraction is faint but visible, as is most of the reverse legend. Slightly glossy dark steel with lighter steel brown highpoints. Not a beauty but not horrible either, and most of this rare variety are in very low grade.



197. 1802 S-227 R2 VF25. Five points sharper with a tiny, sharp scratch near the dentils left of the lower curls. Otherwise the surfaces are excellent, virtually flawless except for a microscopic pinprick in the field close behind the head and a nick-like planchet void on the first S in STATES. LDS, Breen state III. The left sides are softly struck while the right sides are sharp, and the crumbling on the upper edge of the diagonal of the N in CENT is strong. Called VF30 net VF25 by Noyes, his photo #36712. Ex Clinton Hollins 2/1/82-Jack Robinson-Superior 2/91:733.

198. 1802 S-230 R1 G5. A few points sharper with several dull rim nicks on each side, some faint hairline scratches as well, and both sides were very lightly burnished. Retoned a mostly glossy steel brown and chocolate. The date and legends are clear. MDS.



199. 1802 S-233 R2+ VG10. Sharpness VF30 but lightly corroded and there are two rim bruises before the face. No verdigris. Slightly glossy dark olive brown. The date and legends are strong. EDS.



200. 1802 S-236 R1 VG10. Sharpness VF20 with microscopic roughness under a slightly glossy dark olive brown patina. There are traces of light verdigris in protected areas and only a few tiny contact marks of no significance. LDS, Breen state IX, with a cud break connecting ST to the rim above. The date and legends are strong.

201. 1802 S-238 R4 G6. Sharpness F15 with patches of corrosion and light verdigris on both sides, mostly on the reverse, and there are some parallel diagonal pinscratches on the lower right quadrant of the obverse. The date is readable but weakened by the scratches while the legends are strong. Slightly glossy dark olive with steel brown highpoints. EDS, Breen state I.

202. 1802 S-239 R3 VG10. Sharpness VF35 but the obverse was pressed into the reverse of another cent creating the impression of a reverse brockage undertype on that side. The reverse suffered some flattening as a result. Too bad, because this would have been a really nice example of the variety. Glossy chocolate brown. The date remains bold and the legends are mostly strong. MDS, Breen state IV. Ex John D. Wright.

203. 1802 S-242 R2 F12. A few points sharper with spots of very fine roughness on the obverse, mostly around the 2 in the date. A dull rim nick at the E in LIBERTY is the only notable contact mark. Lightly cleaned and retoned a rather glossy dark steel brown and reddish chocolate. LDS, Breen state III. The date and legends are bold.



204. 1802 NC-1 R5+ VG8+. Sharpness F12 with a small patch of light corrosion between the bust tip and the rim plus another larger one near the dentils left of the hair ribbon. Otherwise the surfaces are smooth and attractive with only a few trivial marks. Glossy steel brown and chocolate with some lighter brown toning in protected areas of the reverse. LDS. Breen state IV. The bisecting obverse die crack is strong. The date and legends are complete and strong as well. Called F12 net VG8 and tied for CC#9 in the Noyes census. Ex Jess Peters-George Korsing 3/72-John D. Wright 1/30/89-R. S. Brown, Jr., Superior 1/27/96:318-Dan Holmes.

205. 1802 NC-2 R6 VG7. Perhaps a point sharper with extremely fine roughness covering the fields and protected areas, but the surfaces are rather nice for the grade and the eye appeal is certainly no worse than average. The only notable mark is a long and fairly strong nick under the F in OF. Mostly glossy light olive brown and chocolate with darker olive brown toning in protected areas. The bottom edge of the date is flowing into the rim below but it is easily readable. The legends are strong except for weakness at STATES due to that side being struck slightly off center to K-10.5. Called VG7 and tied for CC#6 in the Bland census. Noyes says VG7 net G6 and tied for CC#7. Ex Bob Matthews, Superior 5/28/89:432-Dan Holmes.

206. 1803 S-243 R2+ G5+. Stemless Wreath with Double Fraction Bar. Close to G6 with a trio of rim bruises before the portrait. Some microscopic roughness in protected areas of the reverse, but overall average for the grade. Rather glossy chocolate with medium brown highpoints. Looks EDS, but can't be sure. The stemless wreath feature is strong but the doubled fraction bar is faint. Ex the "San Diego Junque Jar."



207. 1803 S-244 R4 G6. Glossy chocolate with lighter steel brown highpoints. A few faint hairline scratches in the center of the reverse, but overall smooth and attractive for the grade. LDS.



209. 1803 S-248 R4+ VF25+. Mumps Obverse. Sharpness VF35 but there is a dull scratch in the field below the lower end of the hair ribbon. The only other defects are small planchet voids at the right top of the T in UNITED and on the upper half of ST in STATES, as struck. The surfaces are smooth and quite attractive. EDS, Breen state I. The reverse fields are slightly reflective thanks to the new, freshly polished die. Called VF35 net VF20 and tied for CC#12 in the Noyes census, photo #37557. Ex Stack's 6/27/75:367-Doug Bird-A. Bloom, McCawley & Grellman Auctions 8/17/96:239-Tom Reynolds 1996-Jack Wadlington (The San Diego Collection).



208. 1803 S-247 R3 VF35. Mumps Obverse. Five points sharper but lightly cleaned and retoned glossy medium brown and light olive with frosty lighter brown toning in protected areas, especially on the obverse. The surfaces are smooth and attractive, and the only marks are a half dozen small spots of darker olive toning at MERI. LDS, Breen state III.

210. 1803 S-249 R2 G5. Mumps Obverse. Corrected Fraction 100/000. Glossy chocolate and steel brown. No roughness or notable marks, just worn. The date is strong except for LIB, which is weak, and OF, which is gone. Rare terminal die state, Breen state VI, with strong cud breaks at RIC and the bust tip. Ex William R. T. Smith 8/24/77-Jules Reiver, Heritage 1/24/06:19561. Removed from an NGC slab graded G4 (NGC label included).



213. 1803 S-252 R3- G6. Sharpness F15 with uniform fine to moderate granularity under a slightly glossy dark greenish olive patina. A few light rim bruises and a pinprick at the top of the N in CENT are the notable marks. Strong date and clear legends. MDS. Breen state III.



211. 1803 S-250 R2 VF35. Attractive glossy chocolate and light olive brown with some lighter brown toning in protected areas. The only marks are a splash of darker olive brown toning at the bust tip and a small spot of very fine verdigris at the dentils over the D in UNITED. MDS. This is a nice one.



212. 1803 S-251 R3- VF25. Five points sharper but lightly cleaned and retoned glossy chocolate and bluish steel brown with traces of very faded red remaining in protected areas, mostly on the reverse. The only marks are a very faint hairline scratch in the field under the chin and a light rim bruise at IB in LIBERTY. E-MDS, Breen state II.

214. 1803 S-253 R3 VF35. Ten points sharper but lightly cleaned and retoned glossy dark olive and steel brown with some frosty lighter steel brown toning in protected areas of the reverse and a small splash of reddish chocolate toning at the bottom of the O in OF. The surfaces are decent but do show extremely fine granularity under the toning. This roughness is so fine it is barely visible with a strong glass. Nice eye appeal in spite of the minor defects. MDS. Breen state IV.

The 2006 EAC Convention Sale, May 6, 2006

215. 1803 S-254 R2 VF25. Five points sharper but cleaned and retoned glossy steel brown and chocolate with some lighter brown toning in protected areas of the reverse. The surfaces are smooth and the only mark is a small rim nick right of the Y in LIBERTY. E-MDS. Breen state II.



216. 1803 S-255 R1 EF40. Slightly sharper but lightly cleaned and retoned glossy chocolate with darker steel brown toning on the highpoints. There are traces of microscopic porosity in the field left of the hair ribbon and a small, shallow planchet flake at the dentils right of the second S in STATES. MDS, Breen state III. Ex Stack's 12/98:1138-Superior 5/25/03:529.

217. 1803 S-257 R2 G6+. Large Fraction. Close to VG7 with a light rim bruise left of the lower curls and a small nick in the hair at the forehead. Glossy chocolate and lighter steel brown. The date and legends are strong. MDS. Ex the "San Diego Junque Jar."

218. 1803 S-258 R1 VG7. Large Fraction. Sharpness F12 with very minor roughness covering the planchet. Lightly cleaned and retoned a slightly glossy steel brown and chocolate. No verdigris or notable contact marks. The date and legends are strong. E-MDS.

219. Pair of Early Cents, 1803 & 1812. 1803 S-258 R1 G4. Large Fraction. 1812 S-289 R1 G5. Large date. Both are sharper with defects, the first with short scratches and the second corroded. Both have a clear date. Lot of 2 coins.



220. 1803 S-259 R4 F15. Large Fraction. Sharpness near EF40 but lightly corroded with spots of raised reddish verdigris on both sides. No contact marks. Slightly glossy dark olive and steel. MDS, Breen state II.



221. 1803 S-260 R1 VG10. Large Fraction. Attractive glossy olive brown with lighter steel brown highpoints. Smooth and free of any notable defects. Excellent eye appeal for the grade. LDS.



222. 1803 S-261 R2+ F15. Large Fraction. Sharpness EF45 or slightly better with small pitmarks on both sides plus some shallow corrosion on the bust. No contact marks or verdigris. Rather glossy dark olive and steel. MDS, Breen state III. Great detail, but the pits are a significant distraction.

223. 1803 S-263 R3 G4. Slightly sharper but there are a couple dull dents on the upper half of the obverse causing a slight bulge in the center of the reverse. Uniform very fine porosity covers the planchet, but there is no verdigris. Lightly cleaned and retoned a slightly glossy steel brown. The date is clear and legends complete except for weakness inside the wreath due to the bulge. EDS, Breen state I, which is rare. Ex John Ashby 10/78-John D. Wright.



224. 1803 S-265 R4 VG7. Large Date and Fraction. Slightly sharper but there are some small contact marks scattered about the obverse, none significant but a few too many for the grade. The reverse shows only a few marks, including a dull nick under the F in OF. Lightly cleaned and retoned a rather glossy bluish steel brown and light olive. MDS, Breen state III. The date and legends are clear.

225. 1803 S-265 R4 VG8. Large Date and Fraction. Sharpness F12 with microscopic roughness under a slightly glossy dark olive brown patina, the highpoints a lighter shade of steel brown. There is some verdigris in protected areas of the reverse and a few light contact marks as well, including a couple fine hairline scratches from the date to the neck. The date and legends are clear. MDS, Breen state IV. Ex Henry T. Hettger-Superior 2/18/01:2273.

1803 S-265

Large Date Large Fraction



226. 1803 S-265 R4 VF30. Large Date and Fraction. Sharpness VF35 with traces of microscopic roughness hidden under an attractive glossy dark olive brown and chocolate patina. The only notable marks are a dull rim nick just left of the fraction and another at the R in AMERICA. Excellent eye appeal. Sharply struck MDS, Breen state VI early.



227. 1803 NC-1 R5+ VG8. Possibly a point sharper but covered with uniform extremely fine granularity under a slightly glossy dark olive brown patina. No verdigris and only a few tiny contact marks, including a pair of tiny rim nicks left of the L in LIBERTY and a dull rim nick over the D in UNITED. The date is clear and the legends are strong. MDS, Breen state II.

228. 1804 Cast Copy of S-266a VG10. Unplated example of the early die state in white metal. No notable defects other than a finely granular surface, which comes with the casting process. This piece would be deceptive if plated and nicely toned. Silvery gray highpoints and dark steel in protected areas.

229. 1805 S-267 R1 F12. Sharpness near EF40 with fine porosity on both sides. No verdigris and only a few small contact marks, including a rim nick left of the lower curls. Lightly cleaned and retoned bluish steel brown and chocolate. MDS.



230. 1805 S-269 R1 F15. Pointed I. Nice glossy chocolate brown. No roughness or verdigris and only a few trivial contact marks. LDS with what appears to be a rim cud break at the bust tip. Need to find a higher grade example to confirm the cud break, but this one is rather convincing.

231. 1806 S-270 R1 F12. (NGS slabbed as F15 with a rim nick) Glossy chocolate brown. There are a few small contact marks, including a tiny rim nick under the 06 in the date, but the surfaces are smooth and attractive for the grade. MDS.

232. 1806 S-270 R1 VG7. A few points sharper with a patch of raised corrosion in the field left of the hair ribbon and some very light roughness elsewhere on both sides. A light scrape in the hair left of the forehead and some tiny nicks collected at CEN in CENT. MDS. The date and legends are clear.



233. 1807 S-271 R1 VG8. Comet Obverse. A couple points sharper but lightly cleaned and retoned glossy medium brown and chocolate with dark chocolate toning in protected areas and hints of bluish steel overtone. The surfaces are decent but not perfectly smooth. The notable marks are a tiny pinprick in the field off the tip of the nose and a small nick over the N in ONE. E-MDS. Breen state III, with the beginnings of a "Comet" break behind the head. The date and legends are bold.



234. 1807/6 S-273 R1 EF45. Overdate Large 7 over 6. Five points sharper with a splash of very light roughness in a reddish olive stain on the 7 in the date extending to under the bust tip. The remainder of the planchet is smooth and very attractive. There are a few small, light contact marks on each side, including a dull nick in the field left of the middle curls and a dull, light nick on the lower half of the O in OF. Glossy chocolate brown with lots of frosty tan and light brown toning in protected areas and a small area of reddish chocolate toning at the dentils over ST in STATES. Nicely struck E-MDS. Breen state II. Comes with a small pillbox reportedly from the Dr. French collection.

235. 1807/6 S-273 R1 VG10. Overdate Large 7 over 6. Slightly sharper but dull from microscopic roughness under the dark olive and steel brown patina. A splash of reddish chocolate toning on the lower curls is the dominate mark, but there are additional minor contact marks as well. MDS. Breen state III. The date and overdate are strong and the legends are clear.



236. 1807/6 S-273 R1 F15. Overdate Large 7 over 6. Slightly sharper but cleaned and retoning reddish steel brown and chocolate with some splashes of darker olive toning on the obverse. Smooth surfaces with only a few trivial marks, including a tiny rim nick over the left side of the E in STATES. LDS. Breen state IV, with a clear rim cud break over ST. This is an early stage of the rim cud that extends to cover more area along the rim.



237. 1807 S-274 R2+ F12. Small Fraction. Sharpness VF30 but the obverse is covered with light to moderate roughness under a glossy dark olive patina. The reverse is much nicer with only microscopic roughness under a similar glossy patina. No verdigris or contact marks. Nicely struck E-MDS. Breen state II.



242. 1808 S-278 R3 VG7. **Turban Head.** Slightly sharper but cleaned and retoned glossy light reddish brown with some bluish steel overtones. No corrosion or verdigris, but there are some small contact marks scattered about both sides, including a dull rim nick over the second S in STATES and some hairline scratches under the ribbon tip of the wreath. EDS. The obverse die is misaligned a bit to K-6 while the reverse is off a bit to K-8 (not the same direction).

243. 1808 S-278 R3 AG3. **Obverse Broccage with Tab Double Strike. Turban Head.** Glossy dark steel brown and chocolate. The surfaces are smooth and the only notable mark is a dull cut on the rim right of star 13. The initial strike was a properly centered obverse broccage and the second was 95% off center to K-12.5 leaving an arc of dentils above the head on the normal side and the upper half of ES in STATES visible above the incuse head on the broccage side. The normal and incuse broccage dates are clear and the broccage impression is rotated 10 degrees CCW relative to the "normal" obverse. A neat double error. Ex Chris Young-Michael Arconti, Superior 7/27/03:61.

238. 1807 S-275 R2 VF30. **Large Fraction.** Sharpness EF45 or slightly better but the surfaces are covered with extremely fine roughness, strongest in the field left of the portrait. No verdigris or marks other than a few faint hairline scratches near the dentils under the fraction to UN. Rather glossy dark chocolate brown speckled with some darker olive brown toning, mostly on the lower left part of the reverse. EDS, Breen state I. Called EF45 net VF30 in the Bland census. Ex Philip Van Cleave, Kagin's 1/30/86:5304.



239. 1807 S-276 R1 F12. **Large Fraction.** Sharpness VF20 with fine granularity under a rather glossy dark olive and chocolate brown patina. The notable marks are some light scratches in the field above ONE, and these all blend into the rather thick patina and are hardly visible. E-MDS, Breen state II. The reverse is rotated 30 degrees CCW.

240. **Group of 9 Early Date Cents, 1795-1807, grading Basal State-I to AG3.** Some are damaged and about half are missing a readable date. Calling Mike Packard! Lot of 9 coins.

241. **Donated Lot: 2 more bottles of "Jarhead Red"** California red table wine. All proceeds to EAC.

244. 1808 S-279 R1 VG10. **Turban Head.** A few points sharper, especially on the reverse which grades at least VF20, but the planchet is covered with microscopic porosity. No verdigris or contact marks. Slightly glossy dark steel with some lighter chocolate brown toning on the highpoints of the obverse. E-MDS, Breen state II. Ex John D. Wright.

The 2006 EAC Convention Sale, May 6, 2006

245. 1808 S-279 R1 VG8. Turban Head. Sharpness F15 with some fine porosity on both sides, mostly on the reverse. There are a few microscopic specks of verdigris associated with some of the tiny pits on the reverse and some faint hairlines on the obverse. Slightly glossy dark steel brown with hints of reddish chocolate toning in protected areas. LDS. The date and legends are clear.



246. 1809 S-280 R2 VG10. Turban Head. Sharpness VF25 or so but heavily burnished, especially on the obverse. No roughness or marks, but who knows what was there before the work was done? Nicely retoned a highly glossy chocolate and olive brown. MDS. Breen state III. Nice detail and decent eye appeal in spite of the burnishing.

247. 1809 S-280 R2 VG8+. Turban Head. (NGS slabbed as F12) Slightly glossy dark olive and steel brown. The only mark of any consequence is a diagonal nick right of the eye. M-LDS.

248. 1810/09 S-281 R1 VG10. Turban Head. Overdate 10 over 09. (NGS slabbed as VF20 porous/pitted) Sharpness VF20 with some microscopic roughness in the fields and protected areas, plus four dull nicks in the field off the chin and another inside the O in OF. Dark olive and steel. M-LDS. The date is strong and the overdate is clear.

249. 1810/09 S-281 R1 VG10. Turban Head. Overdate 10 over 09. Sharpness VF35 but the surfaces are matte thanks to uniform moderate granularity. No verdigris or marks. LDS. Breen state IV. The date and overdate are strong.

250. 1810 S-282 R2 VG7. Turban Head. Nice glossy chocolate brown with smooth surfaces. A dull rim nick just right of the date is the only notable defect. MDS. Struck slightly off center to K-4.

251. Pair of Cents, 1810 and 1830. 1810 S-282 R2 G4. Turban Head. MDS. 1830 N-8 R1 VG8. EDS. Both are decent, just worn. Lot of 2 coins.



252. 1810 S-283 R2 F15. Turban Head. Ten points sharper with several dull scratches at the chin and into the field before the neck plus two dull rim nicks or shallow planchet chips on the rim at TES in STATES. Glossy medium brown and chocolate with some frosty lighter brown toning in protected areas. MDS.

253. 1810 S-283 R2 VG7. Turban Head. Glossy chocolate brown with steel brown toning on the highpoints. Smooth surfaces and just a few notable marks, including a nick on the E in UNITED and a pinprick on the top of the C in CENT. Struck very slightly off center to K-9. Strong date and clear legends. Ex Jack Borckardt 2/79-John D. Wright.

254. 1810 S-283 R2 VG8. Turban Head. A couple points sharper but the obverse is covered with extremely fine granularity that's hidden under a rather glossy steel brown and chocolate patina. No verdigris or marks. Nice eye appeal for the grade. LDS. Clear date and strong legends.



255. 1810 S-284 R3 VF20. Turban Head. Five points sharper with a few too many light contact marks for the higher grade. None of these marks is distracting and the overall eye appeal is quite nice. Smooth, corrosion-free planchet. Glossy medium brown and chocolate. MDS. Struck slightly off center to K-7.



256. 1810 S-285 R2 VF20. Turban Head. Sharper by at least 5 points with a half dozen small rim nicks on the top of the obverse and about a dozen scattered about the reverse rim. The area inside the dentils is relatively free of marks, although there is a small nick in the field near the dentils above the head. Glossy chocolate and steel brown. MDS, Breen state III. Ex March Wells.



257. 1810 S-285 R2 VG10. Turban Head. Nice glossy chocolate and steel brown. No corrosion, only light contact marks scattered about the obverse, mostly on the cheek and field before the face. MDS, Breen state III.



258. 1811/10 S-286 R3 G4. Turban Head. Overdate 11 over 10. Glossy chocolate brown. The obverse is slightly weaker and has a thin cut in the planchet in the field above the L in LIBERTY. The reverse is a bit sharper and has no significant defects. The date and overdate are clear.

259. 1811/10 S-286 R3 VF20+. Turban Head. Overdate 11 over 10. Choice glossy chocolate brown. Virtually perfect for the grade. The only notable mark is a tiny rim bruise at the E in AMERICA. MDS, Breen state II. The overdate is clear. A premium example of this tough Turban Head variety.

260. 1811 S-287 R2 VG10. Turban Head. (NGS slabbed as VF20 porous/pitted) Sharpness VF20 with very light corrosion scattered about both sides. No verdigris, and the only notable mark is a tiny scratch on the top of the third 1 in the date. MDS. The date and legends are bold.



261. 1811 S-287 R2 VG8. Turban Head. Sharpness VF20 with very fine roughness on the obverse and patches of stronger corrosion that contain shallow verdigris on the reverse. Rather glossy light olive brown and chocolate with splashes of reddish chocolate on the reverse. MDS. Strong date and clear legends.



262. 1812 S-288 R2 VF25. Turban Head. Large Date. Slightly sharper but there are light rim bruises that barely affect the dentils at stars 1-2 and 10, plus a dull, light scratch from the lips to star 4. Otherwise choice, smooth surfaces. Nice glossy medium brown and chocolate with frosty flowline luster in protected areas. M-LDS. Breen state III. Ex March Wells.

263. 1812 S-288 R2 G6. Turban Head. Large Date. Sharpness VF20 but matte from moderate granularity that covers the obverse with lighter uniform granularity covering the reverse. No verdigris or marks. The date and legends remain strong.



264. 1812 S-289 R1 VG10. Turban Head. Large Date. A few points sharper with the rim beveled above the head and at the opposing area at the stem and CA. There are numerous very tiny contact marks scattered over what otherwise are nice, corrosion-free surfaces. Glossy light chocolate brown. EDS.



265. 1812 S-289 R2 VG10. Turban Head. Large Date. Obverse Broccage. Sharper by at least 5 points but dark and lightly corroded. The only notable mark is a small pinpoint in the field above the head of the normal obverse side. Slightly glossy dark olive and steel. This is an obverse broccage strike with the normal side slightly off center to K-8 and the incuse broccage impression off center to a lesser degree toward K-4.5. The broccage impression is rotated 5 degrees relative to the normal side. Both dates are bold. Ex Chris McCawley 8/99-Michael Arconti. Superior 7/27/03;72.

266. 1812 S-290 R1 VG8. Turban Head. Small Date. Slightly sharper with minor roughness covering the fields and traces of raised verdigris in the field around the bust tip and CA in AMERICA. Slightly glossy dark olive and steel with lighter steel brown highpoints. EDS, Breen state I. The date and legends are bold.



267. 1812 S-290 R1 VF30. Turban Head. Small Date. Clipped Planchet. Very attractive glossy steel brown and chocolate. No defects and great eye appeal. Nicely struck MDS, Breen state III. There is a small planchet clip arcing into the dentils at star 10. Removed from a PCGS slab graded EF40.



268. 1812 S-290 R1 VF25. Turban Head. Small Date. Five points sharper but lightly cleaned and nicely retoned glossy medium brown with olive brown toning in protected areas. The only marks are a tiny rim nick above star 8 and a small planchet flake over the left top of the E in ONE. The surfaces are smooth and the eye appeal is excellent. Nicely struck MDS.

269. 1813 S-292 R2 VG10. Turban Head. (NGS slabbed as VF20 porous) Sharpness VF20 with uniform fine roughness under the rather glossy dark olive and steel patina. The obverse is glossier than the reverse, which is closer to matte thanks to the fine roughness. MDS. The date and legends are strong, and the obverse is slightly misaligned to K-5.

270. 1813 S-292 R2 VG8. Turban Head. (NGS slabbed as F15 porous) Sharpness F15 but covered with very light corrosion and traces of shallow greenish verdigris. No notable marks. Slightly glossy dark olive and chocolate. M-LDS. The date and legends are clear.



271. 1813 S-293 R2 VF25+. Turban Head. (PCGS slabbed as EF45) Sharpness VF30 or slightly better but lightly cleaned and retoned glossy bluish steel brown and chocolate with a half dozen small spots of reddish brown toning on the reverse. No roughness or contact marks. E-MDS.

272. 1813 S-293 R2 VG8. Turban Head. Nice glossy medium brown and chocolate. The surfaces are smooth and the only notable marks are a small spot of very fine carbon dust in the field above the head and a couple more on the reverse, the largest at UNI. LDS, Breen state IV. The date is bold and the legends are clear. Ex the "San Diego Junque Jar."

273. 1813 S-293 R2 VG8. Turban Head. Sharpness F15 with slightly rough surfaces plus traces of greenish verdigris on the reverse. A dull nick close under star 7 is the only notable contact mark. Slightly glossy dark steel brown with darker olive toning in protected areas. LDS, Breen state IV. The date is bold and the legends are complete.



274. 1814 S-294 R1 EF40. Turban Head. Crosslet 4. Slightly sharper with extremely fine granularity effectively hidden under a glossy dark olive and steel brown patina. Frosty flowline luster covers the fields and protected areas on both sides. No verdigris or marks, and the eye appeal of this piece is excellent in spite of the darkish color. Nicely struck LDS. Breen state II. Struck slightly off center to K-4.5. Ex Dr. Thomas S. Chalkley. Superior 1/28/90:529-March Wells.

275. 1814 S-294 R1 VG10. Turban Head. Crosslet 4. A couple points sharper with very light roughness covering the fields on both sides, strongest in the field before the face. No verdigris, and the only marks are a tiny pinprick under the second 1 in the date and a small rim nick just above star 3. Glossy steel and chocolate brown with reddish chocolate toning in the protected areas. LDS. Breen state II. The date and legends are strong. Struck very slightly off center to K-5.

276. 1814 S-295 R1 VG7. Turban Head. Plain 4. (NGS slabbed as EF40 porous/pitted) Sharpness EF40 but covered with moderate to strong granularity, strongest on the reverse. No verdigris or marks. Dull dark steel brown and olive. EDS.



277. 1814 S-295 R1 F12+. Turban Head. Plain 4. Choice glossy medium brown and chocolate with darker steel brown toning on the highpoints. No roughness or verdigris and only a few tiny contact marks, including a couple faint vertical hairlines in the field close behind the head. MDS. Breen state IV. A nice Turban Head cent for the grade.

278. 1814 S-295 R1 VG7. Turban Head. Plain 4. A few points sharper but cleaned and retoned glossy light brown and golden olive with some darker steel toning on the reverse. There is a small punch on the R in LIBERTY that causes a minor bulge on the reverse and some shallow planchet voids in the center of the cheek. LDS. Breen state XII. The date is bold and the legends are complete. Ex John Ashby 6/80-John D. Wright.

279. Donated Lot: 2 more bottles of "Jarhead Red" California red table wine. All proceeds to EAC.



280. 1816 N-3 R4+ VF25. Sharper by at least 5 points but there are some fine pinscratches between stars 7-10 and a tiny rim bruise at the E in AMERICA. Otherwise the surfaces are smooth and free of notable marks. Lightly cleaned and retoned glossy chocolate brown with dark olive toning in the protected areas. MDS.

281. 1816 N-3 R4+ F12. A few points sharper with too many tiny nicks for the higher grade, plus a tiny rim bruise over star 5 and another at the U in UNITED. Glossy reddish chocolate brown with lighter brown toning in protected areas of the reverse. MDS.

282. 1816 N-4 R2 F12. Sharpness VF20 but there is extremely fine roughness covering both sides that dulls the natural gloss. No verdigris and only a couple minor marks, including a dull rim nick at star 4 and another over the O in OF. Lightly cleaned and retoned a slightly glossy dark olive steel and reddish chocolate. EDS.



283. 1816 N-8 R3 VF30. Five points sharper but there is a rim bruise over the M in AMERICA and another lighter one under the end of the wreath ribbon, plus a tiny pinprick in the field under star 4. The surfaces are very smooth and quite attractive in spite of the minor marks. Glossy medium brown and light olive. LDS with three rim cud breaks on the obverse, but the break at star 3-4 is barely visible due to the obverse die being misaligned in that direction. Of course, that makes the other 2 rim cuds appear quite large. Ex Fred Borcherdt 4/14/96.



284. 1817 N-1 R4 VF35. (PCGS slabbed as EF45) Nice glossy chocolate and steel brown with some olive brown toning in protected areas. The surfaces are smooth and show frosty flowline luster in protected areas. The only notable defect is a small punchmark at the upper junction of the T & E in UNITED. MDS. An attractive example of this scarce variety.

285. Trio of Middle Date Cents, 1817-1828. 1817 N-3 R2 G6. LDS with "Mouse." 1820/19 N-2 R2 VG10. E-MDS, the overdate clear. 1828 N-2 R2 F15. Sharper but covered with very fine granularity and lightly cleaned. Lot of 3 coins. All Ex John D. Wright.

286. 1817 N-4 R3 VG10+. Nice glossy chocolate brown. Smooth with only trivial marks. Close to F12 and the eye appeal is very nice for the grade. Nicely struck EDS with the die crack through the base of the date very light.

287. Group of 7 Middle Date Cents, 1817-1824, graded AG3 to G6. Includes 17N5, 18N1, 19N4, 20N?, 22N6, 23/2N1, and 24/2N1. Some are sharper with defects. Lot of 7 coins.

288. 1817 N-8 R2 VF25. Sharpness near VF35 with some nicks scattered about the obverse and a thin planchet lamination from the rim down through star 7 to the tip of the coronet, as struck. Frosty reddish brown and chocolate with splashes of darker olive toning on both sides and flowline luster covering the protected areas on the reverse. EDS. Ex Bob Matthews 4/90-John D. Wright.



290. 1817 N-17 R4 G6. A couple points sharper with fine roughness under a rather glossy dark olive patina with lighter brown toning covering the highpoints. A small swipe of reddish slag under star 8 is the best identifying mark. E-MDS, before the right top of the first T in STATES rises due to the die cracks. Struck slightly off center to K-4 causing some weakness at ERICA.

291. Trio of 1817 N-17 die states. MDS in G4. The right top of the first T in STATES is raised. M-LDS in G6. The die cracks are strong and the area outside the crack through TATE is just starting to sink. M-LDS, but later than the previous piece, in AG3+. The area outside the crack through TATE has become a sunken retained cud, which is a very rare die state. All three pieces are very slightly sharper with minor roughness. Lot of 3 coins.

292. 1818 N-2 R4+ VG8. Sharpness VF30 but whacked a bit, now slightly bent in addition to suffering from a few nicks and rim dents. Reasonably smooth and free of any verdigris, but far from perfect in any respect. About the best thing you can say for this cent is it has great detail for an N-2. Slightly glossy reddish brown and olive. MDS.

293. 1818 N-10 R1 AU50. Frosty light brown with steel brown toning on the highpoints and specks of darker olive toning sprinkled about both sides. LDS. There is very little wear on this cent, but the strike is not as sharp as normal for the variety, particularly on stars 1-10 and the hairbuns. Ex Bill Bright 4/91-John D. Wright.

294. Pair of Overdate Cents, 1820/19 and 1844/81. 1820/19 N-1 R1 VG10. Large Overdate. E-MDS. (NGS slabbed VF30 cleaned/scratched) 1844/81 N-2 R2 F15. Overdate 44 over inverted 18. MDS. (NGS slabbed EF45 porous) Both are sharper with defects. Lot of 2 coins.



289. 1817 N-8 R2 AU55. Mouse Top. Lustrous light to medium golden brown with a splash of reddish chocolate toning at the 7 to below star 13 and hints of very faded mint color remaining in a couple protected areas of the reverse. The only contact mark of any significance is a dull rim nick at the E in UNITED. LDS with a "Finger Mouse" on top of the head. Ex Stack's 4/83:1069-Wes Rasmussen, Heritage 1/13/05:3387 (as EAC grade MS63).



296. 1819 N-4 R3 VF30+. Close to VF35 but there is a small spot of very light roughness at the upper junction of the hairbuns and another faint one above star 6. Otherwise the only mark is a tiny rim nick at the first S in STATES. Glossy chocolate and steel brown with flowline luster covering the fields and protected areas giving this cent great luster for the grade. LDS. Ex Tom Reynolds.



297. 1820 N-8 R3- VF35. Small Date. Ten points sharper with traces of extremely fine roughness under the rather glossy dark olive and chocolate brown patina. No verdigris, and the only marks are a couple dull, light scratches at the T in CENT and a couple tiny pinpricks over the E in CENT. Nicely struck EDS. Ex Bob Matthews, Superior 5/28/89; 597-March Wells 7/96-Tom Matthews.



298. 1820 N-10 R2 AU55. Large Date. Mint state sharpness but there is a small dig left of star 6 and another right of star 8. Lustrous golden light olive brown with attractive sea-green overtones. MDS. Ex 2005 EAC Sale, lot 341.

295. 1819/8 N-1 R1+ MS60. Overdate 9 over 8. Frosty steel brown and chocolate with delicate splashes of reddish brown toning on the reverse. The surfaces are satiny and the eye appeal is excellent for the grade. The best identifying mark is a tiny planchet flake at the dentil tips at D-S. MDS, the overdate clear. Ex McCawley & Grellman Auctions 1/591:108.

The 2006 EAC Convention Sale, May 6, 2006

299. 1820 N-12 R3 VF25. Large Date. Slightly sharper but there is extremely faint roughness under a mostly glossy dark olive brown patina. No verdigris and only a few trivial marks, including a small planchet void well above the N in ONE.



300. 1820 N-13 R1 EF45. Large Date. Five points sharper with a small planchet void on the chin, and the void is filled with dark planchet slag. This defect is as struck, but it does detract from otherwise excellent eye appeal. Glossy light to medium brown with frosty flowline luster covering the protected areas. MDS, the usual Randall Hoard die state.



301. 1821 N-2 R1 VF20+. Sharpness VF30 with extremely fine roughness covering much of the planchet, mostly in protected areas. Might improve with a good bath. The fields are mostly glossy while the protected areas are closer to matte due to the crud. Dark olive and steel. Nicely struck MDS.



302. 1822 N-9 R5- VG7. Glossy medium brown and chocolate. There are many light nicks scattered about both sides, perhaps a few more than you would expect for the grade, but the attractive color helps overcome the marks. EDS.



303. 1822 N-13 R5 G5+. A point or two sharper but there is a rather strong rim dent at star 10. Otherwise this cent is quite nice for the grade. Glossy medium brown and light chocolate. Strong date and clear legends.

304. 1823/2 N-1 R2 VG7. Overdate 3 over 2. (NGS slabbed as VG10 cleaned/rim nicks) Glossy dark steel brown and chocolate. Smooth surfaces showing only a few contact marks, including a light rim bruise at ED in UNITED. MDS. The overdate is clear.



305. 1823 Restrike MS60+. Very attractive glossy light greenish olive brown with sea-green overtones. Outstanding eye appeal for the grade. No spots and the only mark is a planchet flake on the outer points of star 12, as struck. LDS with all the die cracks strong and the reverse rotated 10 degrees CW. A premium example of this unofficial "restrike" made privately in the 1860's & 70's using discarded mint dies sold as scrap.



306. 1824/2 N-1 R1 VF20. Overdate 4 over 2. Ten points sharper with areas of very light roughness on both sides and traces of shallow verdigris in some of the protected areas. Glossy dark steel and olive brown with splashes of reddish brown toning on both sides. A rim nick at the first S in STATES is the only notable contact mark. MDS, the overdate clear.



309. 1825 N-4 R3 VF20. Ten points sharper with microscopic granularity under a mostly glossy dark olive patina with steel brown toning on the obverse highpoints. There is a diagonal nick under star 8 and some light verdigris in protected areas of the reverse. Nicely struck MDS. Ex Dr. Thomas S. Chalkley, Superior 1/28/90:651-Tom Matthews.



307. 1824 N-3 R2 VF25+. Attractive glossy chocolate and steel brown with frosty flowline luster in protected areas. There are a half dozen small spots of lighter brown toning on each side and the only notable mark is a dull rim nick at star 2.



310. 1825 N-8 R3+ VF30. Slightly sharper but there is a small rim bruise under star 2 and traces of very fine verdigris dusted into some of the protected areas of the obverse. Glossy medium brown and chocolate woodgrained with darker chocolate brown tones on both sides. E-MDS. Ex McCawley & Grellman Auctions 1/6/96:354-Tom Matthews.

1825 N-2 Ex Stu Hodge



308. 1825 N-2 R2 AU55. A mint state cent that displays outstanding luster and eye appeal, but there are a few small, shallow planchet flakes on the obverse that catch the eye. These are located in the middle of the neck, in the field over the bust tip, and on the tip of the nose. Otherwise this cent is choice. Lustrous bluish steel brown and chocolate. LDS. All the fine obverse and reverse die cracks are clear. Ex Stu Hodge, 2004 EAC Sale, lot 408.



311. 1825 N-8 R3+ G5. Off Center. Sharpness F12 or better but moderately corroded with some shallow greenish verdigris remaining in protected areas. No notable signs of contact, but there are some small pitmarks or planchet flakes on the chin that do catch the eye. Chocolate and olive brown with some glossy surface where the roughness is minor. MDS. Struck 10-15% off center to K-4 leaving the lower half of the 25 off the planchet.

The 2006 EAC Convention Sale, May 6, 2006

312. 1826 N-3 R3 VG10. Sharpness F15 with a few small spots of corrosion on the upper half of the obverse, most with traces of greenish verdigris. A tiny scratch shows at the dentils under the 8 in the date. Glossy medium brown and chocolate with darker olive brown toning in the spots. LDS.



313. 1826 N-7 R1 EF40. Ten points sharper but lightly cleaned and retoned glossy dark chocolate brown. A patch of very light roughness at stars 10-11 and a small nick under the right corner of the eye are the notable marks. Nicely struck MDS with strong die clashmarks on both sides, and these clashmarks are rotated about 20 degrees relative to the current die alignment, which is close to a head-to-toe orientation.

314. 1826 N-7 R1 VF25. Glossy light brown with light steel brown toning on the highpoints and specks of reddish chocolate toning scattered about the reverse. LDS. The fields are slightly reflective, especially on the reverse. The strong die clashmarks found on earlier states of this variety are gone.

315. 1826 N-9 R3 F15. Ten points sharper with fine granularity under a mostly glossy olive brown patina. No marks or verdigris. MDS.



316. 1827 N-1 R2 VF30. Sharpness near EF45 but cleaned and mostly retoned glossy steel brown, but there is ample faded artificial red remaining in protected areas. There is a small spot of fine carbon on star 7, another on the top of the Y in LIBERTY, and a couple fine vertical hairline scratches at CE in CENT. MDS, the reverse rotated 15 degrees CCW.

317. 1827 N-4 R2 VF20. Slightly sharper with a few dull hairline scratches on the obverse and microscopic roughness covering the reverse fields. Chocolate brown, the obverse rather glossy and the reverse closer to matte. EDS.



318. 1827 N-8 R3 VF25. Nice glossy chocolate brown with medium brown toning in protected areas of the reverse. Smooth and attractive for the grade. A pinprick in the field left of star 12 and a thin vertical nick over the right side of O in ONE are the only notable marks, and they are trivial. MDS, the reverse rotated 15 degrees CW.



319. 1827 N-11 R1 VF30. Ten points sharper with traces of microscopic roughness on both sides, especially around star 7 and inside the wreath. No verdigris. A short scratch right of star 6 and a dull one down through BE in LIBERTY to the ear, plus a small rim nick at star 13 are the notable contact marks. Mostly glossy olive and chocolate brown. Nicely struck EDS. Ex Joe Tomasko 5/91-Tom Matthews.

321. 1828 N-1 R1 F15+. Slightly glossy steel brown and chocolate. The only notable mark is a very light rim bruise just below star 10. LDS, the reverse rotated 20 degrees CW. Ex Joe Tomasko-Tom Matthews.

322. Quartette of Middle Date Cents, 1828-1837. 1828 N-3 R2 VG7. EDS. 1837 N-3 R1 VG8. MDS. 1837 N-6 R2 VG10. LDS. 1837 N-8 R1 F12. LDS. The middle two are slightly sharper with minor roughness, but all have a clear date. Lot of 4 coins.



323. 1828 N-4 R4 VG10. Glossy dark chocolate brown with medium brown toning on the highpoints, the two-tone look creating excellent eye appeal for the grade. The surfaces are smooth and the only marks are a light vertical nick under the eye and a shallow planchet void on the rim at ER in AMERICA. MDS.

324. 1828 N-5 R2 VF25. Choice glossy light to medium brown. No defects and excellent eye appeal for the grade. Sharply struck E-MDS.



325. 1828 N-6 R1 VF35. Sharpness AU50 or better with microscopic corrosion scattered about both sides. None of this roughness is distracting but it does dull the luster a bit. There are traces of verdigris on the reverse, including a couple specks inside the C in CENT. No contact marks. Rather glossy steel brown with some darker steel toning on the reverse. Sharply struck LDS with the reverse rotated 10 degrees CW. Ex G. Lee Kuntz, Superior 10/6/91:920-Tom Matthews.



320. 1827 N-12 R5 F15. Sharpness VF20 with extremely fine roughness under a glossy dark olive and steel brown patina. No verdigris, and the only notable contact mark is a short, light scratch arcing in the field under stars 7-8. EDS, without the die crack down between the 1 & 8.



326. 1828 N-6 R1 MS60. Rotated Reverse. Lustrous light brown with a couple small wisps of darker olive toning on the reverse. There are hints of light bluish steel in protected areas of the reverse and suggestions of very faded mint red on the upper half of the obverse. The only contact mark is a small, light rim bruise at the O in OF. Of course there are the always present small lumps from die rust sprinkled over the obverse, and these are often confused with nicks. Nicely struck MDS with the reverse rotated 30 degrees CCW.

327. 1828 N-9 R4 AU50. Close to AU55 with a pinprick left of the date and a very thin vertical nick in the field under the hairbun. Otherwise this cent is choice. Lustrous chocolate and steel brown with some small splashes of medium brown toning on both sides and hints of very faded mint red showing in protected areas of the reverse. Excellent eye appeal. EDS. Ex Tom Reynolds 10/94.



328. 1829 N-4 R4 VG8. Glossy chocolate and steel brown. Smooth surfaces with only a few minor marks, including a vertical nick or short scratch on the C in CENT. MDS. The die crack through the R in AMERICA is clear but not strong. Ex 1987 EAC Sale, lot 411-Tom Reynolds-Dennis Mendelson, Superior 2/3/91:380-Tom Matthews.



330. 1829 N-5 R3+ F15. Small Letters Reverse. Five points sharper but cleaned and retoned glossy golden brown and chocolate with delicate overtones of light bluish steel on the reverse. The surfaces are mostly smooth, but there is some microscopic roughness around the stars on the right side of the obverse and above the T in CENT. LDS. Nicely struck, but there is some minor weakness in the usual places, including the stars, top of the head, and bottom of the wreath.



331. 1830 N-7 R3 VF20. Sharpness EF40 but covered with extremely fine granularity. No verdigris or contact marks. Lightly cleaned and retoned a slightly glossy light olive brown. MDS. Softly struck at the tip of the coronet and on the upper stars, but rather well struck elsewhere. Ex Tom Matthews.



329. 1829 N-5 R3+ VF35. Small Letters Reverse. Very attractive glossy steel brown and chocolate with frosty mint luster covering the protected areas. The surfaces have the look of a slightly higher grade and the eye appeal is excellent. The only marks are a tiny nick on the eyelid and a very light, thin nick on the cheek at the curl, plus a speck of carbon hidden in the dentils under star 1. Nicely struck E-MDS. Stars 1-6 are well struck, the buns are fully impressed, and the wreath shows none of the usual weakness associated with the variety. A premium example of the small reverse letters type. Ex Jack Robinson, Superior 1/29/89:869-Manuel Ahumada.



332. 1831 N-2 R2+ EF40. Small Letters Reverse. Five points sharper but there is a small dig at the hair over the coronet tip. Otherwise this cent is choice and offers excellent eye appeal. Glossy medium brown and chocolate with traces of faded mint red remaining on the reverse. MDS. Ex R. S. Brown, Jr., McCawley & Grellman Auctions 8/14/92:168-Tom Matthews.

333. 1831 N-2 R2+ F15. Small Letters Reverse. Glossy bluish steel brown and chocolate with splashes of reddish chocolate toning on both sides. Possibly retoned. A patch of extremely fine roughness at stars 7-9 is the only notable mark. LDS with rim crumbling at stars 6-11 plus a small cud break extending into the field at star 11.



334. 1831 N-3 R1 MS60. Small Letters Reverse. The obverse is lustrous golden light brown with medium brown toning on the highpoints and a small spot of darker chocolate toning off the upper left point of star 13. The reverse is mostly lustrous bluish steel brown and light olive with golden light brown toning at the lower right and traces of faded mint red in protected areas. The surfaces are satiny and attractive. MDS with the reverse rotated 10 degrees CW.



335. 1831 N-3 R1 MS60. Small Letters Reverse. Lustrous light brown with darker bluish steel brown toning on the upper left quadrant of the obverse. The only defects are a planchet chip on the rim at star 3 and a thin streak of darker olive toning from a microscopic planchet fissure running from star 8 down to the hair, plus a dull nick on the rim over star 5. M-LDS, the reverse rotated 10 degrees CCW. Removed from an NGC slab graded MS64BN (NGC label included). Ex Superior 9/04:873.

336. 1831 N-5 R4 VG10. Small Letters Reverse. Sharpness VF20 or slightly better but covered with uniform fine granularity under a very slightly glossy dark olive and steel patina. No marks or verdigris. Nicely struck MDS.



337. 1831 N-6 R1 EF40+. Large Letters Reverse. (ANACS slabbed as AU58) Sharpness EF45 or a bit better with light contact marks in the field before the portrait and extremely tiny ticks covering the face. Nice glossy medium brown. Decent eye appeal for the grade in spite of the minor marks. Sharply struck EDS.



338. 1831 N-7 R1 MS60+. Large Letters Reverse. Attractive lustrous light bluish steel brown with 5-10% of the faded mint red remaining, mostly on the reverse. The surfaces are satiny and show only a few microscopic marks, including a couple very light ticks on the chin and a small planchet flake in the dentils at star 9, as struck. M-LDS with crumbling in the notch of the R in AMERICA. Removed from an NGC slab graded MS64BN (NGC label included).



339. 1831 N-9 R2 AU58. Large Letters Reverse. Partial Double Profile. Lustrous bluish steel brown and chocolate with traces of mint red remaining in protected areas, especially on the reverse. Excellent luster and eye appeal, only a very light touch of rub on the highest points from mint state. The only mark is a tiny spot of carbon or crud near the dentils over star 3. Nicely struck EDS with a clear double profile on the forehead from die bounce and slightly reflective fields on both sides. Removed from a PCGS slab graded MS62BN (PCGS label included).



340. 1831 N-9 R2 VG8. Large Letters Reverse. Sharpness VF20 but afflicted with light to moderate corrosion that makes this cent something less than attractive. The uneven surfaces do have shallow verdigris in the thick dark greenish olive patina, which may have been formed during burial in soil. However, the obverse displays lots of natural gloss and the reverse is far from matte. And the big plus is the die state. LDS with an internal die cud from star 3 to star 5 branching to the rim at star 5. Not quite the terminal state of these dies, but close to it and extremely rare nonetheless. You'll have to be patient if you plan to wait for a nicer one.

Rare Pyramid Break 1831 N-12/2 Die State



341. 1831 N-12/2 R1 VF30. Large Letters Reverse. Clipped Planchet. 3-point cud at star 13. Five points sharper with traces of very fine verdigris dusted into some of the protected areas. The only mark of any consequence is a small, shallow pitmark under the M in AMERICA. Glossy chocolate brown mottled with some lighter steel brown tones. Traces of frosty luster show on both sides. M-LDS displaying a strong cud break that covers three points of star 13. In addition, there is a small planchet clip that barely affects the dentils at star 8.

342. 1831 N-14 R4- VG8. Large Letters Reverse. Glossy medium brown. Smooth surfaces displaying only trivial contact marks. MDS.

343. 1832 N-1 R2 MS62+. Small Letters Reverse. Choice lustrous bluish steel brown and chocolate with 5% of the mint color remaining on the obverse, 20% on the reverse. Virtually perfect except for a small, shallow planchet flake in the field midway between star 1 and the chin, as struck, and a small spot of very light carbon right of the second S in STATES. Otherwise this cent would deserve a higher grade. MDS. A beautiful cent with outstanding eye appeal. Removed from a PCGS slab graded MS65BN (PCGS label included). Ex Julian Leidman 10/94-Manuel Ahumada.

344. 1832 N-3 R1 VF20. Large Letters Reverse. Partial Double Profile. Sharpness EF40 but recolored glossy golden light brown and olive. There are two nick-like planchet voids at stars 6 & 7 and a strong rim dent over OF. M-LDS with a strong double profile on the forehead with weaker doubling on the nose tip, lips, and chin.

345. Quartette of Middle Date Cents, 1831-1839. 1831 N-11 R2 VG10. Small letters reverse. LDS with cud break at TES. 1835 N-8 R1 F12. Head of 1836. LDS with a bisecting die crack on the obverse. 1837 N-17 R4 VG10. Plain hair cord. LDS with a raised retained cud break under the end of the wreath stem. 1839 N-13 R2 G6. Booby Head. LDS. Most are sharper with minor defects. Lot of 4 coins.

346. Pair of Middle Date Cents with Double Profile. 1832 N-3 R1 VF20. Ten points sharper but cleaned and retoned glossy medium brown and reddish chocolate. E-MDS with a strong double profile from the forehead down to the chin with additional doubling on the neck. 1835 N-5 R2 F12. Head of 1834. Rather glossy medium brown and reddish chocolate. MDS with a strong double profile from the top of the forehead down to the chin. Both are ex John D. Wright. Lot of 2 coins.

347. Trio of Middle Date Cents. 1833 N-2 R2 F15. M-LDS. 1836 N-4 R3 VF25. MDS. 1836 N-5 R3 VG10. LDS. All are very slightly sharper with minor defects. All are ex John D. Wright. Lot of 3 coins.



348. 1833 N-2 R2 VF35. Rotated Reverse. Five points sharper with a few too many tiny nicks for the sharpness grade. None of these marks is at all distracting and the eye appeal is quite nice for the grade. Glossy medium brown with lots of flowline flash showing on both sides. LDS, the reverse rotated 40 degrees CW.

349. Group of 6 Cents, 1833-1855. 1833 N-5 R1 G6. 1844 N-1 R1 F12. 1847 N-19 R1 F15. 1850 N-1 R2 F12. 1853 N-13 R1 VF25. 1855 Probably N4 G5. A few are sharper with defects. Lot of 6 coins.



350. 1833 N-3 R1 G6. Tab Double Strike. Sharpness at least F12 but moderately rough from a combination of small nicks and fine corrosion. No verdigris or notable contact marks. Cleaned and retoned dark steel brown with traces of very faded artificial red in protected areas. MDS. Nothing special except this cent didn't eject completely from the press after being struck, the result being a tab double strike at stars 4-5+ and UN. The obverse tab shows strong dentils from the second impression of the obverse die while the reverse tab is smooth and must have been against the new planchet rather than the reverse die. A lower-grade example of a rare type of mint error.

351. 1833 N-5 R1 VF30. Repunched 8. Glossy light brown with steel brown highpoints. There is a small spot of darker chocolate toning at the dentils over star 10 and some light nicks scattered about both sides, none notable. MDS. The repunching on the 8 is still clear. Ex John D. Wright.



352. 1834 N-1 R1 EF40. Small 8 with Large Stars. Sharpness EF45 or slightly better but there is a fine pinscratch from the dentils over star 10 into the bottom of the lower hairburn, plus some very faint hairlines on both sides. Lustrous light bluish steel brown with a swipe of darker olive brown toning at the rim over star 7. E-MDS. Ex McLaughlin & Robinson Auctions 9/87:581-John D. Wright.



353. 1834 N-1 R1 AU58. Small 8 with Large Stars. Lustrous light to medium brown with bluish steel overtones on the obverse. There are a couple small nicks in the field off the forehead and a tiny hairline scratch left of star 13. Just a hint of friction on the highest points from mint state. Excellent eye appeal. MDS. Removed from a PCGS slab graded MS63BN (PCGS label included).



354. 1834 N-1 R1 VF35. Small 8 with Large Stars. Five points sharper with a very light rim bruise under star 13 and another left of star 6. Glossy medium brown with frosty lighter brown toning covering the protected areas. MDS. An attractive cent in spite of the minor marks. Ex John D. Wright.



355. 1834 N-1 R1 VF25. Small 8 with Large Stars. Strong Double Profile. Five points sharper with a nick on the bust plus a few smaller ones elsewhere on the obverse. Glossy light brown with a few speckles of darker olive toning on the obverse. MDS with a strong double profile from the top of the forehead down to the chin. Ex Johnnie Dillow 2/81-JDW.

356. 1834 N-2 R1 VF25. Small 8 with Large Stars. Five points sharper with a dull nick over star 13. Otherwise the surfaces and eye appeal of this cent are excellent. Glossy light to medium brown. MDS. Ex John D. Wright.



357. 1834 N-2 R1 VF25. Small 8 with Large Stars. Double Profile. Five points sharper with traces of extremely fine roughness on the right side of the reverse. Glossy medium brown mixed with some chocolate and reddish brown tones. MDS. A clear double profile extends from the top of the forehead down to the end of the chin. Ex Bob Essig 8/93-John D. Wright.



358. 1834 N-4 R2 VF35. Large 8 with Small Stars. Ten points sharper with a small patch of very light corrosion on the front edge of the neck, and this spot was carefully smoothed, probably to remove some reddish verdigris. Otherwise the only defect is a small rim nick just left of the date. Glossy light to medium brown with reddish brown toning on the previously described spot and frosty flowline luster in the protected areas. MDS. Ex John D. Wright.

359. 1834 N-4 R2 VF25. Large 8 with Small Stars. Double Profile. Sharpness EF40 with a few light hairline scratches on the portrait and another from star 2 to the neck, plus several dull rim nicks on both sides. The notable rim nicks are over star 7 and at OF. Glossy medium brown with light olive tones on the highpoints. E-MDS with a clear double profile from the top of the forehead down to the chin. Ex Jack Borckardt (Fort Findlay Enterprises) 4/81-John D. Wright.

1834 N-5 Large 8 Large Stars with Medium Letters Reverse



360. 1834 N-5 R5+ EF45. Large 8 and Stars with Medium Letters. Double Profile. Close to AU50 with a few too many light nicks on the obverse for the higher grade. The nicks include a few light ones at the bust tip, one small one on the throat, and a couple more very light ones in the field over the head. Otherwise this example is choice. Very attractive frosty medium brown very delicately woodgrained with a slightly lighter shade of steel brown. Satiny mint luster covers the fields and protected areas. A clear double profile shows on the forehead, lower half of the nose, lips, and chin. A premium example of this rare and very popular "Redbook" variety. At the lower end of the condition census. Ex Coinhunter (Catherine Bullowa) in the late 1960's-Del Bland-R. S. Brown, Jr., Superior 9/30/86:760-Manuel Ahumada.



361. 1834 N-5 R5+ VF20+. Large 8 and Stars with Medium Letters. Sharpness VF35 with some very light corrosion and specks of shallow verdigris on both sides, mostly in the field before the mouth and at RICA. The only contact marks of any significance are a couple small rim nicks under the end of the wreath stem. Rather glossy mix of medium brown and chocolate. There is a triple profile on the back of the ear. Not perfect but not too bad for this tough and popular variety. Try to find a choice one with much meat left on its bones.



364. 1834 N-5 R5+ VG8. Large 8 and Stars with Medium Letters. Glossy light olive brown with hints of bluish steel overtone and splashes of darker olive brown toning on the obverse. Most likely cleaned and recolored. Smooth surfaces that display only a few light contact marks, including a thin scratch from star 8 down to the hair. The date is clear but not strong and the legends are complete. Not bad for a lower grade example of this popular variety.



362. 1834 N-5 R5+ F15. Large 8 and Stars with Medium Letters. Fine Double Profile. Sharpness EF40 or a bit better but the obverse is covered with fine porosity. The reverse is smoother but does show some very fine porosity, strongest at UNI. No verdigris and the only contact mark is a light rim bruise at F-A. Chocolate and steel brown, the obverse matte and the reverse slightly glossy. A fine double profile is present on the forehead, lips, and chin.



365. 1834 N-5 R5+ VG8. Large 8 and Stars with Medium Letters. Partial Double Profile. Sharpness VF30 with patches of fine to moderate corrosion and greenish verdigris on the obverse. The reverse is covered with uniform fine roughness but no verdigris and is very dull, all but refusing to reflect light making a photo nearly impossible. The obverse is slightly glossy and both sides are a dark steel brown. There is a clear double profile on the forehead. Ugly but with decent detail. And it's better than the next one!



366. 1834 N-5 R5+ AG3. Large 8 and Stars with Medium Letters. Sharpness VG8 but covered with fine to moderate corrosion, slightly bent, and plugged in the center. No verdigris or other marks, but it's ugly enough already. Lightly cleaned and retoned dark bluish steel brown. The date and legends are easily readable. A hole filler.

363. 1834 N-5 R5+ VG10. Large 8 and Stars with Medium Letters. Sharpness EF40 or slightly better but bent, finely porous, and banged up a bit. Ok, so it's not choice, but there is a lot of detail and no verdigris. Recolored a slightly glossy light greenish olive brown.



367. 1835 N-4 R4+ VF20. Head of 1834. Attractive glossy medium brown, the reverse very delicately woodgrained with a slightly darker shade of brown. The surfaces are smooth and show only a few trivial marks, including a thin horizontal nick in the middle of the neck. The best identifying mark is a spot of darker olive toning just right of star 13. EDS. At the lower end of the condition census for this tough die variety. Ex Chris McCawley-Dennis Mendelson, Superior 9/98:1566.



368. 1835 N-9 R4+ VF25. Head of 1834 with Large 8. Five points sharper with a sharp rim nick right of the D in UNITED and extremely fine granularity under the glossy chocolate and olive brown patina on the obverse. The reverse is completely free of any corrosion or roughness and displays a glossy chocolate patina with frosty lighter brown toning in the protected areas. Nicely struck EDS.



369. 1835 N-10 R4+ G6. Head of 1834. Sharpness F12 with areas of light to moderate corrosion, including a shallow pitmark close under the eye and a dusting of verdigris at ICA. There are several light rim bumps on both sides and a dull horizontal nick on the chin. Rather glossy dark olive and steel brown with lighter steel brown toning on the highpoints. Not an especially attractive cent, but the rare late die state is a big plus. A strong, large retained cud break at D-STAT makes this cent very special. Removed from an NCS slab graded VF details corroded (NCS label included). Ex Darwin B. Palmer 4/6/73-Jules Reiver, Heritage 1/24/06:20030.

370. 1835 N-12 R4+ VG10. Head of 1834. Rotated Reverse. Nice glossy medium brown with steel brown toning on the highpoints. Smooth surfaces, free of any significant marks. MDS with the reverse rotated 25 degrees CW.

The 2006 EAC Convention Sale, May 6, 2006

371. Pair of 1835 N-12 cents. The first is G5 in EDS with the reverse rotated 20 degrees CW. The second is also G5 but is from the rare M-LDS with the reverse rotated 30 degrees CW. This example has a strong die crack from star 9 to the dentils at right outlining the lower end of a sunken retained cud. The retained cud was soon followed by a full cud break that defines the late die state of this variety. Both cents are very slightly sharper with minor defects but clear dates and legends. Lot of 2 coins.

372. Pair of 1835 Cents. N-12 R4+ VG8. EDS. N-13 R4 VG7. EDS. Both are slightly sharper with minor defects but clear dates and legends. Lot of 2 coins.



373. 1835 N-13 R4 F12. Head of 1834. Slightly sharper with some small rim nicks on both sides and traces of extremely fine roughness hiding under a glossy dark chocolate and steel brown patina. Rare LDS with a beveled retained cud break outside a strong die crack at star 5. A very interesting die state seldom offered in the most advanced collections.

374. 1835 N-14 R2 F35. Head of 1836. Glossy light brown. Coated with a thin layer of "Care" or "Blue Ribbon" and there are some tiny nicks scattered about both sides, but overall attractive for the grade. EDS.



375. 1835 N-18 R4+ VG7. Head of 1834. Glossy medium brown with smooth, relatively mark-free surfaces. There is a very light rim bruise under star 13 and a few dull nicks at the bottom of NT in CENT. The reverse is rotated 15 degrees CW.

376. 1836 N-2 R2 VF20. Ten points sharper with a dusting of very fine verdigris in protected areas of the obverse, possibly removable. A dull rim nick at ES in STATES is the only notable contact mark. The obverse is a rather glossy chocolate brown mottled with some darker olive tones. The reverse is a uniform glossy light to medium brown. E-MDS.

377. 1836 N-4 R3 VF30. Five points sharper but cleaned and retoned a rather glossy light to medium steel brown with faded red in protected areas. No roughness or stains, and the only notable contact mark is a dull rim nick at star 8. LDS with a thin rim cud break at stars 1-2 and 5 radial die cracks on the reverse.



378. 1836 N-5 R3 VF30. Ten points sharper with a long, thin nick reaching from star 1 nearly to the throat plus a dull nick on the eyebrow and a rim nick right of star 13. Cleaned and retoned glossy olive brown. EDS with smooth, slightly reflective fields on both sides. The die crack at F-AM is faint. Ex John D. Wright 8/77-Johnnie Dillow 2/81-John D. Wright.

Rare Early Die State 1836 N-6



379. 1836 N-6 R2 VG7. Sharpness VF20 but covered with fine corrosion, and there is some greenish verdigris showing on the reverse, mostly around CENT. Dull dark reddish olive and chocolate brown. Rather ugly, but the early die state is very special. The cud break over star 8 has not formed. A common die variety but the early die state is extremely rare, probably low R7 or high R6, and seldom found in high grade.



380. 1836 N-7 R4 EF40. Ten points sharper but there are some spots of light carbon scattered about the reverse, mostly at the E in ONE and right of the second S in STATES. These may be removable or at least capable of being improved. Otherwise the color and surfaces are smooth and quite attractive. The obverse is glossy light reddish brown with frosty luster covering the protected areas. The reverse is frosty light to medium brown with tiny splashes of reddish brown and darker olive toning. Sharply struck MDS.

381. 1837 N-4 R2 VF30. Plain Hair Cord. Nice glossy light brown with steel brown toning on the highpoints. Smooth and attractive, a tiny nick just right of the upper lip being the only notable mark. E-MDS. Ex Tom Reynolds 6/90-John D. Wright.

382. 1837 N-4 R2 VF30. Plain Hair Cord. Five points sharper but lightly cleaned on the obverse. Otherwise this cent is choice. Glossy medium brown and chocolate with the lower half of the obverse showing slightly lighter brown toning on those highpoints thanks to the light cleaning. LDS. Ex Bob Essig 8/93-John D. Wright.



383. 1837 N-6 R2 MS60. Plain Hair Cord. (NGC slabbed as MS63BN) The obverse is frosty golden light brown with a few tiny splashes of darker steel brown toning while the reverse is lustrous bluish steel brown with wisps of darker bluish steel toning. The only notable contact mark is a very light arcing hairline scratch right of star 7. MDS.

384. 1837 N-8 R1 VF30. Plain Hair Cord. Five points sharper with an extremely light scuff that barely alters the toning on the face into the field at left. Glossy light brown with slightly darker steel brown highpoints. A couple very tiny ticks under star 11 and a short hairline scratch under the left end of the line below CENT are the notable marks. EDS. Ex RARCOA 6/72-John D. Wright.

385. 1837 N-8 R1 VF30. Plain Hair Cord. Ten points sharper with a dozen very tiny rim nicks around the obverse. Otherwise the surfaces are satiny and free of any notable defects. Frosty steel brown and olive with lighter brown and steel toning in the protected areas. LDS, the old N-7. Ex Del Bland 5/72-John D. Wright.

386. Quartette of Middle Date Cents, 1837-1839. 1837 N-8 R1 VG10. Plain Hair Cord. MDS. 1837 N-8 R1 VF20. Plain Hair Cord. LDS, the old N-7. 1838 N-2 R1 F15. MDS. 1839 N-5 R2 VF20. Booby Head. MDS. A couple are slightly sharper with minor defects. Lot of 4 coins.

387. 1837 N-9 R1 VF25. Beaded Hair Cord. Nice glossy medium brown with frosty lighter brown toning in protected areas. A choice example with only a few trivial marks. LDS with all the obverse and reverse die cracks clear. Ex 1978 EAC Sale, lot 60-John D. Wright.



388. 1837 N-10 R1 VF35. Beaded Hair Cord. Ten points sharper with a rim dent at R1 in AMERICA, and this dent was smoothed out and dentils were added to the rim (where they wouldn't have been anyway). Otherwise the surfaces are excellent, smooth and free of defects. Glossy medium brown and chocolate with traces of very faded red in protected areas of the reverse thanks to an old cleaning. MDS. Ex John D. Wright.



389. 1837 N-12 R3- AU58. Beaded Hair Cord. Accessory E. Mint state sharpness but there is a tiny pinscratch between stars 2 & 3. Otherwise the surfaces are satiny and quite attractive. Lustrous bluish steel brown. Great eye appeal in spite of the tiny mark. MDS. The stray E punched into the leaves under the E in AMERICA is clear.



390. 1837 N-13 R2+ MS60+. Plain Hair Cord. (NGC slabbed as MS64BN) Lustrous dark bluish steel brown with faded mint red covering about 10% of the reverse. There are some microscopic ticks on the cheek and a single tiny speck of reddish brown toning right and left of star 4, which can help identify this cent. MDS.

391. Trio of Middle Date Cents, 1837 & 1838. 1837 N-13 R2+ VG10. Plain Hair Cord. LDS. 1838 N-1 R1 VF20. LDS. 1838 N-12 R2 F12. LDS. Lot of 3 coins.



392. 1837 N-14 R2 EF40. Plain Hair Cord. Glossy mottled mix of medium brown and darker olive with frosty lighter steel brown toning in protected areas. Some tiny nicks at the cheek and eye plus a couple more over the N in CENT. LDS. Ex Fred Borchardt 8/30/91-March Wells-Tom Matthews.

393. 1837 N-17 R4 F15. Plain Hair Cord. Slightly sharper with microscopic roughness under a glossy dark olive and steel brown patina. Possibly retoned. A pair of nicks connect stars 1 & 2 and there is a shallow planchet flake under the 8 in the date. E-MDS. Ex McCawley & Grellman Auctions 1/7/95:544-Tom Matthews.



394. 1838 N-3 R1 VF35. Nearly ten points sharper with a dull, light scratch under star 3. Otherwise nice for the grade. Glossy light olive brown with frosty lighter brown toning in protected areas. EDS. Ex Henry C. Hines-1949 ANA Sale (Starr), lot 1726-Willard C. Blaisdell (via Del Bland) 9/76-R. E. Naftzger, Jr., 1977 EAC Sale, lot 288-Tom Matthews.



395. 1838 N-3 R1 VF30. Five to ten points sharper but very lightly cleaned. Glossy medium brown with slightly lighter steel brown toning on the obverse highpoints and frosty light bluish overtones in protected areas, especially on the reverse. A shiny spot right of star 5 is the only notable mark. EDS. Ex Jerry Stallons 6/75-John D. Wright.

396. 1838 N-6 R1 EF45. (NGC slabbed as AU55BN and attributed on their label as N-9) Steel brown with frosty lighter brown toning in protected areas. The surfaces are decent but dull thanks to a thin layer of oxidation that needs to be brushed away. The eye appeal should improve with a bit of TLC. MDS.



397. 1838 N-6 R1 MS60. (NGC slabbed as MS64BN) Frosty bluish steel brown and light olive. The only marks are a tiny nick in the field off the chin and a shallow depression in the field over the T in CENT, as struck. However, the surfaces are a bit dull and would benefit from a decent brushing to bring out the underlying luster. M-LDS. Ex Doug Bird 3/86-Wes Rasmussen, Heritage 1/13/05:3700. The attribution and Rasmussen provenance are noted on the NGC label.

398. Pair of 1838 Cents. N-11 R2 F12. EDS. N-12 R2 F15. M-LDS. Both are slightly sharper with minor defects. Lot of 2 coins.

399. Pair of Middle Date Cents, 1838 & 1839. 1838 N-11 R2 VF20. E-MDS. 1839 N-4 R1 VF20. Silly Head. EDS. Both are sharper with defects. Lot of 2 coins.

400. 1838 N-14 R4 F15. Sharpness EF40 but covered with fine granularity, and there are several small patches of reddish verdigris on the obverse. A few small rim nicks, otherwise free of significant contact marks. Slightly glossy dark olive and steel. EDS.



401. 1838 N-15 R5+ G6. Sharpness near VF25 but moderately corroded and there are several dull scratches on the lower part of the reverse. Dark olive and steel. Ugly but the attribution is easy given the detail remaining.



402. 1838 N-16 R5+ G6. Sharpness VF20 but lightly corroded. No verdigris but there are some dull rim nicks on both sides. Slightly glossy medium brown with dark olive toning in protected areas. Another ugly cent but the attribution is easy when you know what to look for.



403. 1839/6 N-1 R3+ VG10. Overdate 9 over 6 (or inverted 9). Nice glossy medium brown. Smooth surfaces with only trivial contact marks, including a small rim nick right of star 9 and a couple closely spaced vertical hairline scratches from the front of the eye to the field right of star 5. LDS, die state III, with a strong bisecting die crack across the obverse. Ex Bowers & Merena 1/8/02:194.



404. 1839 N-2 R2 AU55. Head of 1838. Lustrous light bluish steel brown with a small spot of chocolate brown toning at the top of star 1 and traces of very faded mint color remaining on the reverse. Just a trace of rub on the highest points from mint state. A small, dull nick on the right top of the N in CENT is the only notable contact mark. MDS. Ex John D. Wright.

405. 1839 N-3 R1 VF30. Head of 1838. Slightly sharper but there are a few very light rim bruises on both sides, including one over star 6. Nice glossy medium brown, the obverse delicately woodgrained with slightly lighter brown tones. MDS.

406. 1839 N-4 R1 VF25. Silly Head. Ten points sharper but cleaned and retoned glossy light to medium steel brown with lighter coppery brown tones on the highpoints. There is a long vertical nick left of star 1; otherwise the surfaces are smooth and free of defects. MDS.



407. 1839 N-7 R2 VF35. Booby Head. Attractive glossy medium brown. A tiny scratch in the field before the nose and another down from the chin plus a tiny rim nick over star 4 are the only notable marks, and they are trivial. Nicely struck E-MDS. Ex Don Valenziano 1988-March Wells 4/2/92

408. Quartette of Cents, 1839-1853. All expertly recolored using a new process. 1839 N-7 R2 VG10. Booby Head. 1847 N-37 R1 VF25. 1849 N-23 R3 VG7. LDS, the old N-13. 1853 N-3 R1 VF25. MDS. This is a generic group of cents, except for the cleaning and retoning. I have carnal knowledge of these pieces, but I did not do the work. They were dipped bright, then retoned using a new product. I invite your careful inspection to assess the effectiveness of the recoloring. In my opinion, these cents could pass as original. Lot of 4 coins.



409. 1839 N-9 R2 EF40. Silly Head. Nice glossy chocolate brown, the reverse mottled with some lighter steel brown tones. There is a small splash of darker steel brown toning before the eye and another left of star 3, plus a few tiny pinpricks around the F in OF. LDS with frosty flowline luster in protected areas and clearly defined rim cud breaks at stars 6-7, 7-8, and 9.5-11. Ex Jack Robinson, Superior 1/29/89; 1180-Walter Dudgeon, McCawley & Grellman Auctions 7/30/94; 181-Tom Matthews.

410. 1839 N-12 R4+ VF35+. Booby Head. Wright Plate Coin. Slightly sharper but cleaned and retoned glossy olive and steel brown with lighter olive brown highpoints on the obverse. There are a few trivial nicks on otherwise smooth surfaces, including a tiny one in the field off the tip of the nose, another on the end of the chin, and a third just right of star 1. MDS, die state II, with a clear die crack from the dentils through star 4 to the cheek under the eye. Called EF40 and CC#6 in both census lists, and this is the Wright plate coin for the die variety. Ex Frank Sashkin-Garry Fitzgerald 1/81-Del Bland-R. S. Brown, Jr., Superior 9/30/86; 898-J. R. Frankenfield, Superior 2/17/01; 1203

411. Donated Lot: 2 more bottles of "Jarhead Red" California red table wine. All proceeds to EAC.



412. 1839 N-13 R2 EF45. **Booby Head.** Slightly sharper but lightly cleaned and retoned glossy dark olive brown and steel. The only marks are a small, shallow planchet void near the dentils over star 4, as struck, and a very light rim bruise at the C in AMERICA, plus a patch of extremely fine roughness at stars 8 & 9. LDS.



413. 1840 N-1 R2 AU50. **Small Date.** A mint state example that would be close to choice except for a pair of closely spaced pinscratches down the neck. No other defects. Choice glossy light to medium brown with generous traces of original mint red remaining, especially on the reverse. The surfaces are satiny and lustrous. LDS, die state b. Ex Bowers & Merena 1/24/90:1193-J. R. Frankenfield, Superior 2/17/01:1212.



414. 1840 N-3 R1 AU55. **Small Date.** (NGC slabbed as MS63BN) Glossy olive and chocolate brown with faded mint red covering about 15% of the obverse. No stains or notable defects, just a bit of very light friction on the highpoints. Could use a bath, though. MDS, die state b.

415. **Trio of Late Date Cents, 1840-1849.** 1840 N-6 R1 VF20. Repunched 40. LDS, die state c. The repunching on the 0 is clear. 1849 N-2 R2 F12. VLDS, die state gg. 1849/8 N-8 R2 VF20. Overdate 9 over 8 (or repunched 9). E-MDS, die state b, with the repunching at the right bottom of the 9 clear. A couple are slightly sharper with minor defects. All are ex John D. Wright. Lot of 3 coins.



416. 1840 N-10 R2 VF35. **Large Date.** Ten points sharper but cleaned and partially retoned glossy reddish steel brown with ample underlying very faded red showing through on both sides. A small rim nick over the E in STATES is the only other defect. E-MDS, die state a. Ex Jim Frans 10/89-John D. Wright.



417. 1841 N-3 R2 EF45. Ten points sharper but the obverse was cleaned and is only partly retoned while the reverse is untouched. No spots, stains, or notable signs of contact. Only a bit of very light wear on the highpoints from mint state sharpness. The obverse is frosty light coppery brown mellowing to light steel brown. The reverse is a lustrous chocolate and bluish steel brown with some lighter steel brown toning in protected areas. LDS, die state d. Ex John D. Wright.

418. **Trio of Late Date Cents, 1842-1847.** 1842 N-5 R3+ VF20. Large Date. 1846 N-9 R2 F15. E-MDS. 1847 N-27 R4 F15. Repunched 1. A couple are sharper with minor defects. Lot of 3 coins.



419. 1843 N-4 R1 EF45. Obverse of 1842 with Reverse of 1844. Five points sharper but the reverse was lightly cleaned and retoned. Both sides are a glossy medium to chocolate brown with frosty flowline luster covering the protected areas. The only mark is a small spot of reddish chocolate toning at the bottom of the E in CENT, and this spot was lightly scraped to remove some shallow verdigris. MDS, die state c. The rim cud break under the 1 in the date is present but not strong. Ex John D. Wright.



420. 1843 N-5 R1 EF40+. Mature Head. Five points sharper but there is a short, light pinscratch in the field close off the chin. Otherwise this cent is sharp and attractive. Frosty bluish steel brown. E-MDS, die state b.



421. 1843 N-6 R1 EF40. Mature Head. Repunched 18. Five points sharper but there is a thin planchet lamination across the reverse from UN in UNITED to the M in AMERICA. This planchet flaw is faint except for where it crosses the leaves under UN. There is a lightly scuffed spot over the N in ONE and another smaller one over the left top of the N in CENT. Frosty reddish medium brown and chocolate. MDS, die state b late. There is a thin rim cud break at star 13, and repunching is still clearly visible at the bottom of 18. Ex Tom Reynolds.

422. 1843 N-17 R6- VG7. Mature Head. Lightly cleaned and retoned a rather glossy bluish steel brown with reddish chocolate toning in protected areas. The surfaces show extremely fine granularity in the fields and protected areas, but overall the surfaces are decent for the grade. A small planchet chip in the field near the throat is the only notable mark.

423. 1845 N-4 R1 EF45. Five points sharper with some light contact marks on the obverse, none distracting but a few more than you expect for the sharpness grade. The notable marks are a tiny, very light rim bruise at star 6, a small spot of darker toning at the dentils over star 5, and another left of star 6. Frosty light steel brown with satiny mint luster covering the fields and protected areas. MDS, die state c early. The die crack at ST in STATES is faint. Ex John D. Wright.



424. 1845 N-4 R1 MS60. (NGC slabbed as MS63BN) Lustrous dark bluish steel brown and chocolate with hints of very faded mint red remaining on the reverse. No notable defects, but there is a very tiny planchet clip that weakens the dentils at star 4 and the opposing ones at IT in UNITED. MDS, die state c late. The die crack at ST in STATES is strong. The attribution is noted on the NGC label.



425. 1845 N-6 R2 EF40. Five points sharper but lightly cleaned and retoned glossy light olive and golden brown on the obverse while the reverse is glossy medium brown with wisps of darker olive brown toning around the wreath. A couple tiny contact marks under star 5 and a faint hairline scratch in the field behind the head are the only other distractions. Nicely struck LDS, die state d. Ex John D. Wright.



426. 1846 N-1 R1 EF40. Repunched 18. Ten points sharper but the obverse was lightly cleaned and mostly retoned frosty bluish steel brown. The reverse is a similar color and displays satiny luster in the protected areas. A small rim nick at star 2 is the only notable mark. Nicely struck M-LDS, die state c. The repunching on the 18 remains sharp. Ex Stack's OTC 7/68-John D. Wright.



427. 1846 N-11 R1 AU50. Medium Date. Very attractive glossy medium brown with light bluish steel and greenish olive toning in protected areas. The only mark is a light diagonal nick on the cheek right of the lips. Nicely struck EDS, die state a. Ex Howard R. Newcomb, J. C. Morgenthau & Co. 5/16/45:734-Floyd T. Starr, Stack's 6/13/84:485-R. S. Brown, Jr., Superior 9/30/86:1045 (as MS60)-John D. Wright.



428. 1846 N-12 R1 EF45+, Tall Date. Slightly sharper but there is a dull diagonal nick in the field close to the throat plus a lighter one in the middle of the jawline. Otherwise this cent is choice and offers excellent eye appeal. Lustrous light to medium brown. Sharply struck EDS, die state a. The fields are smooth and slightly reflective. Ex J. V. McDermott 3/64-John D. Wright.



429. 1846 N-16 R5 VF25. Tall Date. Five points sharper with traces of very fine carbon dusted into some of the protected areas of the obverse. There are a couple light nicks on the cheek and a stronger one in the field over star 12. Slightly glossy medium brown. EDS, die state a.

430. Group of 5 Late Date Cents, 1846-1854. 1846 N-18 R1 VG8. MDS. 1846 N-18 R1 G6. LDS. 1848 N-8 R3-VF20. E-MDS, die state b. 1850 N-4 R1 VG10. MDS. 1854 N-1 R3 F12. M-LDS. Most are slightly sharper with minor defects. Lot of 5 coins.



431. 1846 N-19 R4 MS60+. (NGC slabbed as MS65BN) Frosty bluish steel brown with 5% of the original mint red remaining. The surfaces are slightly dull and in need of a proper brushing, but there are no stains and only a few light contact marks, including a tiny hairline scratch in the field off the chin and some light nicks in the field right of star 4. A small spot of greenish verdigris on the ribbon loop at the bottom of the wreath may be removable. M-LDS, die state c. Tied for CC#5.



432. 1846 Struck Counterfeit from Transfer Dies. Rarity-7 Good-4. Rotated Reverse. Glossy dark chocolate brown and olive. There is a collection of shallow digs at star 7 and a few pinscratches in that same area, plus a pinscratch at D-S on the reverse. Otherwise the surfaces are smooth and free of marks. The details are blunted, as always, because the dies are not sharp in the first place, but the date and legends are all readable. The reverse is rotated 120 degrees CCW. Six examples are known, and this is the worst of the group. The variety is described on page 72 of the late date cent book. Weight 123.7 grains. Ex Don Weathers.

433. 1847 N-1 R2 EF40. Repunched Date. Five points sharper but lightly cleaned and retoned glossy medium brown and chocolate. There is some darker olive toning in protected areas at BER and a couple tiny ticks on the cheek, but overall the surfaces and eye appeal are excellent. Nicely struck MDS, die state b. The repunching remains clear at the left base of all 4 digits. Ex Stack's OTC 3/68-John D. Wright.

434. 1847 N-3 R3 EF40. Repunched Date. Ten points sharper but lightly burnished and retoned glossy medium brown. There is a dull nick in the field under star 8 and another in the dentils right of star 9, plus a tiny rim bruise under the 1 in the date. Sharply struck E-MDS, die state a, with clear repunching on all 4 digits of the date.



435. 1847 N-34 R5+ F15. Five points sharper with a few too many tiny nicks on the obverse for the sharpness grade. A tiny scratch that skips across LIBE is the best identifying mark. Glossy medium brown and chocolate. Very rare EDS, die state a, with the dies unlapped and the reverse uncracked. One of only 9 known in this early die state (a die state unknown to Newcomb), and this one is tied for CC#3 of that group. Ex Don Weathers.

436. 1847 N-38 R1 F15. Sharpness VF30 with a strong, dull nick over star 2 and a smaller one inside the top of the ear. Otherwise smooth and free of notable marks. Glossy medium brown with lighter brown toning on the highpoints. E-MDS, die state a.



437. 1848 N-2 R1+ AU55. Repunched 18. Frosty chocolate brown with satiny mint luster covering the fields and protected areas. The only mark is a spot of darker reddish steel toning under star 5. Virtually mint state sharpness but softly struck on the coronet over LIB, all of the stars, and on much of the wreath. MDS, die state b. The repunching on the 18 is strong. Ex John D. Wright.



438. 1848 N-4 R4 AU50+. Repunched Date. Mint state sharpness with a carbon spot on the upper half of star 12 and a small cross scratched into the field over the N in ONE. Otherwise this cent is very nice, free of any distractions. Frosty light brown with 5% of the original mint red remaining on the obverse, 20% on the reverse. M-LDS, die state b late. The repunching is visible on all 4 digits of the date, but it is weak. Tied for CC#4. Ex Henry T. Hettger.

439. Trio of 1848-1849 Cents. 1848 N-10 R3 F15. EDS, die state a. 1848 N-41 R1 F12. M-LDS, die state c. 1849 N-17 R4 VF30. LDS, die state f. The second two are sharper with defects. Lot of 3 coins.



440. 1848 N-6 R1 EF40. Five points sharper but lightly cleaned and retoned glossy chocolate and olive brown with some lighter brown tones in protected areas. A small nick on the chin is the only notable mark. M-LDS, die state d. Ex Lester Merkin MBS 6/74:686-Ray Chatham-John Ashby 10/80-John D. Wright.



441. 1848 N-11 R5 F15. Nice glossy medium brown and chocolate. Close to VF20 in sharpness but there are too many light contact marks for the grade, including a dull nick hidden in the hair under star 8 and a fresh nick under star 12. MDS, die state b.



443. 1848 N-16 R2 MS63. (PCGS slabbed as MS63RB) Lustrous light bluish steel brown with 20% of the mint red remaining on the obverse, 10% on the reverse. No notable defects, only microscopic specks of darker toning visible only with the aid of a strong glass. E-MDS, die state b. CC#4.



444. 1848 N-20 R3 VF35+. Very close to EF40 but there are some light contact marks, including a thin nick in the field right of the inner curl and a small pinprick over the T in CENT. Attractive glossy medium brown and chocolate. MDS, die state b.



442. 1848 N-15 R5 MS60+. Lustrous bluish steel brown and chocolate with traces of mint red remaining on both sides, especially on the obverse. There is a small spot of very light verdigris between the tops of the 8 & 4 in the date and an even weaker one in the field off the bust tip. Neither of these spots is visible without a glass and the eye appeal of this cent is excellent. EDS, die state a. CC#2 of this scarce die variety.

445. 1848 N-25 R4 AU58. (PCGS slabbed MS63BN) Frosty medium steel brown with delicate overtones of light bluish steel and traces of mint red remaining on both sides. The only notable mark is a tiny spot of dark reddish chocolate toning in the field left of star 12. Just the barest hint of rub on the highest points from mint state. Nicely struck MDS, die state b. CC#5 for the variety.



446. 1848 N-27 R2 EF45. Five points sharper but lightly cleaned and retoned glossy light to medium brown with frosty luster showing in protected areas. A couple small nicks on the chin and some greenish verdigris in the dentils. MDS, die state d.

447. Pair of Late Date Cents, 1848 & 1853. 1848 N-41 R1 F15. EDS, die state a. Sharpness EF45 but corroded. 1853 N-4 R3+ VF30. Repunched 3. MDS, die state b. The repunching over the 3 is sharp. Ten points sharper but recolored.



448. 1849 N-2 R2 EF45. Frosty steel and light olive brown with some lighter steel brown toning in protected areas. A couple tiny rim nicks over TAT in STATES are the only notable defects. LDS, die state gg early. This piece is missing the crumble on the base of the first T in STATES and the one on the bottom edge of the ribbon loop. Ex the "San Diego Junque Jar."



449. 1849 N-3 R4 EF40. Ten points sharper but covered with extremely fine granularity that's visible only under strong magnification. Frosty light bluish steel brown with very faint hairlines covering both sides. No spots, stains, or contact marks, but there is a shallow planchet flake in the dentils left of star 4, as struck. E-MDS, die state f. Ex John D. Wright.

450. 1849 N-8 R2 VF35. Glossy light to medium brown. A few minor contact marks, including a thin nick under star 10 and a dull rim nick under the end of the wreath stem. M-LDS. die state c. The repunching at the right bottom of the 9 is gone.



451. 1849 N-11 R1 MS60+. Repunched 1. Attractive lustrous light greenish olive brown with delicate overtones of bluish steel and sea green. Possibly lightly cleaned long ago and retoned naturally, but the eye appeal remains excellent. Sharply struck EDS, die state a. The repunching under the base of the 1 is sharp. Ex John D. Wright.



452. 1849 N-22 R1 AU50. Sharpness closer to mint state but there is a tiny nick on the nose, another on the chin, one on the diagonal of the N in ONE, and a couple more on the rim over AM. Otherwise this cent is choice. Attractive glossy light to medium brown with frosty mint luster covering the fields and protected areas. MDS, die state b. Ex Julian Leidman-Ray Chatham-John Ashby 10/80-John D. Wright.

453. Donated Lot: The final 2 bottles of "Jarhead Red" California red table wine. All proceeds to EAC.

454. 1850 N-4 R1 EF45. Five points sharper with a reddish chocolate stain at stars 4-5 and a smaller but darker one under star 10. Otherwise this cent is an attractive frosty light to medium brown. LDS, die state c, with several very shallow low spots on both sides (caused by debris on the dies). Ex Phil Wagner-John Ashby 3/80-John D. Wright.



455. 1850 N-6 R1 AU55. Lustrous light steel brown. No marks and only a hint of rub on the highest points, but there is a low spot from the bust tip to star 1 and several more inside the wreath, all caused by debris on the dies. LDS, die state c. Ex Tom Reynolds 11/86-John D. Wright.

456. 1850 N-21 R2+ AU55. Lustrous bluish steel brown. The only marks are a couple microscopic planchet flakes in the field just right of star 3, as struck. M-LDS, die state b, just before the reverse rim cuds form. Ex American Heritage Minting 7/84-John D. Wright.



457. 1850 N-21 R2+ MS63+. Mint red fading to steel brown, two thirds of the red remaining on the obverse and slightly less than half of the red remaining on the reverse. The surfaces are satiny and show only a few trivial marks, including a tiny spot of dark steel toning close under star 1, a light nick in the dentils at star 2, and a tiny nick in the dentils at ED in UNITED. LDS, die state c, with two clear rim cud breaks on the reverse (Newcomb's old #10).

458. 1850 N-21 R2+ AU50. Mint state sharpness and nearly choice except for a dull chip out of the rim between stars 10 & 11 and a similar but smaller one at the rim over UN in UNITED. These defects appear to be as struck since there is a thin lamination in the dentils just inside both voids, but they are a major distraction regardless. Frosty steel brown with 10% of the mint red remaining. The surfaces are satiny. LDS, die state c. The two reverse rim cuds are clear. Ex Tom Matthews.

459. Trio of Late Date Cents, 1850 & 1851. 1850 N-28 R3-VF30. 1851/81 N-3 R1 VF30. MDS, die state b. The date punching error is clear. 1851 N-23 R3 VF35. LDS. Lot of 3.

460. 1851 N-5 R2+ EF40. Mint state sharpness but there is a dig at star 10. Otherwise the surfaces are satiny and lustrous, free of any notable defects. Lustrous light bluish steel brown with hints of faded mint red showing on the obverse. MDS.



461. 1851 N-6 R1 EF45. Repunched Date. Very close to mint state but there is a light pinscratch from just below star 4 across to the ear. Otherwise free of any notable defects. Lustrous bluish steel brown. MDS, die state b late. The repunching on the date is dull but still visible. Ex John D. Wright.



462. 1851 N-6 R1 AU50. Glossy medium brown with underlying flowline luster covering the fields and protected areas. No spots, stains, or contact marks, just very light wear on the highpoints. LDS, die state d. The repunching at the date is gone but the rim cud at the bottom of the reverse has not formed. Ex Ray Chatham-John Ashby 10/80-John D. Wright.



463. 1851 N-12 R1 AU50. Mint state sharpness with some initials very lightly scratched in cursive writing into the field behind the portrait, plus a couple similarly faint pinscratched letters in the fields above and below ONE CENT. Otherwise the eye appeal is excellent. Lustrous light bluish steel brown. LDS, die state d (Newcomb's old #11). Ex Willard C. Blaisdell 9/76-R. E. Naftzger, Jr., 1991 EAC Sale, lot 374-John D. Wright.

465. 1851 N-27 R5- MS62. (NGC slabbed as MS65BN) Very attractive highly lustrous bluish steel brown with 10-15% of the slightly faded mint red remaining. Would be a choice example except for a small, thin dig on the coronet tip and a tiny pinprick in the field over star 4. Otherwise the surfaces and eye appeal of this cent are outstanding. E-MDS, die state b. The repunching over the base of the first 1 is gone but the die lines at the inner curl are still visible. CC#4 of this scarce die variety. Ex R. S. Brown, Jr., Superior 6/2/02:981.



464. 1851 N-18 R1 AU50+. Frosty light steel brown with fine flowline luster covering the fields and protected areas. There are some tiny spots of darker steel toning around stars 4-6 and stars 11-13, plus a few light nicks right of the eye. LDS, die state c. Ex John D. Wright.



466. 1851 N-39 R3 AU50. Frosty light to medium steel brown with some slightly darker shades of steel brown toning on highpoints of the obverse and a peep of mint red showing around star 6. There are a few tiny contact marks on the face, including a thin vertical nick high on the cheekbone near the hair. E-MDS, die state a. The small bar defect near the dentils over star 3 is clear. Ex Chris McCawley 5/30/84-R. S. Brown, Superior 9/30/86:1299-John D. Wright.

467. Pair of Late Date Cents, 1851 & 1852. 1851 N-39 R3 EF40. M-LDS, die state b. 1852 N-1 R1 VF30. M-LDS, die state d (Newcomb's old #2). The first is sharper but lightly cleaned and retoned. The second is a nice glossy chocolate brown. Both are ex John D. Wright. Lot of 2 coins.



468. 1852 N-1 R1 EF40. Slightly sharper with a dull, light hairline scratch from the coronet tip to the dentils over star 8 and a shallow planchet flake on the rim at the U in UNITED, as struck. Otherwise the surfaces are very nice for the grade. Frosty medium brown and chocolate with fine flowline luster covering the fields and protected areas. LDS, die state d (Newcomb's old #2). Ex Jack Robinson, Superior 1/29/89;1626-John D. Wright.

472. 1852 N-14 R1 MS60. Repunched Date. Lustrous bluish steel brown with generous traces of faded mint red remaining on the reverse. The fields are satiny and show only a few light marks. These include a small spot of slightly darker toning in the field off the end of the chin, a very light rim nick under star 1, and another over the R in AMERICA. MDS, die state c. Repunching remains visible on the 1 & 52 but is gone from the 8. Ex 1986 EAC Sale, lot 292-John D. Wright.



469. 1852 N-3 R1 MS60. Lustrous medium brown and chocolate with delicate hints of light bluish steel overtone and traces of mint red remaining on the obverse. The surfaces are satiny and very attractive for the grade. No defects. MDS, die state b. Ex Tom Matthews 11/85-John D. Wright.

473. 1852 N-18 R3 AU58. Mint state sharpness with a nick on the rim under the 5 in the date, plus a tiny pinprick in the field right of the inner curl, a fresh nick near the berry over N in ONE, and some tiny planchet flakes on the rim at star 10, as struck. Lustrous light to medium steel brown with satiny fields. LDS, die state b.



474. 1852 N-22 R1 EF40. Glossy medium brown mixed with some light olive tones on the reverse. There is a shallow planchet flake high on the neck and another in the dentils at star 1, plus a small spot of darker chocolate toning on the end of the chin. LDS, die state d (Newcomb's old #9). Ex John D. Wright.

471. 1852 N-12 R1 AU50. Frosty light steel brown, the fields covered with fine flowline luster. The only notable mark is a tiny diagonal nick just left of the ear. M-LDS, die state b (Newcomb's old #13). Ex John D. Wright.



475. 1853 N-3 R1 AU55. Lustrous light to medium brown. No spots, stains, or contact marks, only a touch of very light friction on the highest points of the design. The only defect is some weakness in the dentils at star 2 and on the opposing dentils at the D in UNITED thanks to a thin spot in the planchet. Otherwise this cent is choice. MDS, die state b. Ex Coin Galleries MBS 2/13/91:2723.

478. 1853 N-12 R1+ AU58. Frosty light brown with bluish steel overtones on the reverse. The only notable defects are a tiny spot of darker toning in the field off the nose tip and some very fine carbon just off the end of the wreath stem. LDS, die state c. Ex John D. Wright.



476. 1853 N-8 R3 AU50. Sharpness AU55 but lightly cleaned and retoned glossy bluish steel brown, the reverse with more of the blue overtone than the obverse. There is a very faint scuff on the cheek and some weakness in the dentils off the end of the wreath stem, as struck. MDS, die state b. Ex John D. Wright.

479. 1853 N-13 R1 AU58. Repunched 1. Mint state sharpness but lightly cleaned and retoned frosty light to medium brown with light olive and sea-green overtones in protected areas of the reverse. The only mark is a faint spot of slightly darker toning in the field touching the lower lip. M-LDS, die state b. The repunching at the base of the 1 is strong. Ex Jim Frans 10/89-John D. Wright.



477. 1853 N-12 R1+ MS60. Frosty bluish steel brown and chocolate with 10% of the mint red remaining. There is a small spot of dark olive toning in the hair under the B in LIBERTY, another in the field over star 1, and one at the dentils over star 7, plus a couple small nicks on the cheek near the lips. The fields are satiny and attractive except for the small spots. M-LDS, die state c. Ex Jim Frans 10/87-John D. Wright.

480. 1853 N-20 R3 AU55. Repunched Date. Lustrous medium brown. No defects, only some very light friction on the highpoints. Excellent eye appeal. MDS, die state b. The repunching remains strong at the bottoms of the 5 & 3. Ex John D. Wright.



481. 1853 N-25 R1 MS63. Repunched 1. Mint red fading to steel brown, half the faded mint color remaining. The notable marks are a thin nick near the hair under the left side of star 8 and a small spot of toning under the second T in STATES plus another under the left foot of the first A in AMERICA. MDS, die state b. The repunching under the base of the 1 is clear.

482. 1854 N-3 R1 EF40. Sharpness near mint state with some light pinscratches in the obverse fields, and these scratches are names or words in cursive writing. Frosty light steel brown. No other defects. MDS, die state a late. Ex John D. Wright.



485. 1854 N-13 R3 AU50. Mint state sharpness but lightly cleaned to appear as a choice red and brown cent. Lustrous faded red mellowing to steel brown. There are wisps of darker steel toning around stars 4-6 and some light rim nicks at the bottom of the reverse. E-MDS, die state b early, with a shallow low spot covering most of the cheek, neck, and ear (from crud on the die). May deserve a slightly higher grade if retoned to a more natural appearance. Ex R. S. Brown, Jr., Superior 9/30/86:1387-John D. Wright.



483. 1854 N-5 R4 AU50. Sharpness closer to mint state with a faint hairline scratch from star 2 to the neck and another from star 1 into the same area. Otherwise only a few microscopic contact marks. Attractive glossy medium brown with frosty flowline luster. LDS, die state c. Ex Larry Whitlow.



486. 1854 N-26 R3+ MS60+. Mint red fading to steel brown, 80% of the original red remaining. A choice example except for splashes of dark olive toning on the rim at stars 1 & 2, and these stains contain traces of carbon as well. There are a few additional tiny specks of dark toning on both sides plus a dull scuff on the edge under star 13. M-LDS, die state b.



484. 1854 N-10 R2+ MS60. Lustrous light to medium bluish steel brown. The surfaces are satiny and the eye appeal is excellent for the grade. The only mark is a very tiny speck of crud or verdigris in the field under star 4. Nicely struck LDS, die state e. Ex:R. S. Brown, Jr., Superior 9/30/86:1383.



487. 1855 N-4 R1 AU55. Upright 55. (ANACS slabbed as MS63BN) Glossy steel brown and chocolate with traces of faded mint red remaining in protected areas of the obverse. Smooth, attractive surfaces, only a bit of rub on the highpoints from mint state. LDS, die state f, with 4 rim cud breaks over STATES. A choice example of this fairly rare die state.



490. 1855 N-9 R1 EF40. Italic 55. Knob on Ear. Ten points sharper but lightly burnished and only partially retoned glossy light golden brown with steel brown highpoints and some iridescent rose tones in protected areas of the reverse. A tiny nick on the left foot of the N in CENT is the only notable mark. MDS, die state d. The knob break under the T in LIBERTY is partially raised. Ex John Ashby 10/80-John D. Wright.



488. 1855 N-7 R1 AU50. Upright 55. Glossy light to medium brown with steel brown toning on the highpoints. No spots, stains, or contact marks other than a few microscopic ticks on the cheek. MDS, die state b. Ex John D. Wright.



491. 1856 N-1 R1 AU58. Italic 56. Mint state sharpness but lightly cleaned. Retoned frosty light olive and medium brown with overtones of sea green. No spots, stains, or contact marks, but there are a few very shallow low spots around ONE CENT caused by debris on the die. Sharply struck EDS, die state a. Ex John D. Wright.

489. 1855 N-9 R1 VF35. Italic 55. Knob on Ear. Glossy medium brown with steel brown toning on the highpoints. Only minor contact marks, the notable one a tiny rim bruise at the first S in STATES. EDS, die state b (the earliest die state you can reasonably hope to find). Ex 1995 EAC Sale, lot 482.



492. 1856 N-1 R1 MS60. Italic 56. Frosty bluish steel brown with attractive, satiny surfaces. No spots and only a few microscopic contact marks, including a tiny tick on the chin and a faint horizontal nick over the E in CENT. E-MDS, die state a late. Ex American Heritage Minting 4/83-John D. Wright.

The 2006 EAC Convention Sale, May 6, 2006



493. 1856 N-3 R1 AU50. **Italic 56.** Mint state sharpness but lightly cleaned. The obverse is lustrous slightly faded red mellowing to bluish steel brown on the highpoints. The reverse is lustrous bluish steel brown with very faded red in protected areas, and this side has a more natural look (and the toning may be original). A small spot of darker toning under star 3 and a tiny nick on the rim at star 6 are the only marks. M-LDS, die state f. Ex Stack's 6/17/60:76-Superior 2/16/76:1650-Del Bland 4/86-John D. Wright.

494. 1856 N-6 R1 EF45. **Upright 56.** Ten points sharper but cleaned and partially retoned frosty bluish steel brown with lots of artificial red remaining in protected areas. A nick at the right top of star 13 is the only notable mark. EDS, die state a. Needs a proper retoning. Ex 1991 EAC Sale, lot 434-John D. Wright.



495. 1856 N-6 R1 AU50. **Upright 56.** Choice glossy medium brown. The only marks are a small nick under star 2 and a more visible rim nick at ES in STATES. E-MDS, die state a. Ex John D. Wright.

496. 1856 N-6 R1 EF45+. **Upright 56.** Slightly sharper with a few very light contact marks at the junction of the neck and bust plus a thin nick left of star 13 and a tiny rim nick at star 1. Glossy medium brown with satiny luster covering the fields and protected areas. MDS, die state b. Ex John D. Wright.



497. 1856 N-7 R2 AU58+. **Upright 56.** Very close to mint state, only a touch of rub on the hair at the ear and no notable defects. Frosty light steel brown with traces of original mint red remaining on both sides. M-LDS, die state c.



498. 1856 N-19 R2 EF40. **Repunched 856. Italic 56. Off Center.** Slightly sharper but lightly cleaned and retoned glossy light greenish olive and golden brown, the color close to what C. Douglas Smith loved to call a "greenie." No spots and only a couple light contact marks, including a fine hairline scratch on the chin and a couple ticks around stars 12 & 13. Struck 15% off center to K-1. EDS, die state a. The repunching on the 856 is smeared due to the off center strike. A neat mint error.



499. 1856 N-19 R2 MS60. Repunched 856. Italic 56. Frosty light steel brown with traces of mint red showing on the obverse, 15% of the original red remaining on the reverse. There is a spot of darker steel toning at the dentils above star 7 and a swipe of similar toning on the wreath under CENT, and both of these stains contain traces of extremely fine carbon or crud. Otherwise the only marks are two tiny nicks left of star 11. Nicely struck EDS, die state a. The repunching on the 856 is sharp. Not perfect but still tied for CC#10.



502. 1857 N-1 R1 AU55. Large Date. Mint state sharpness with a fine pinscratch from the hair under the R in LIBERTY down to just above the throat. The only other marks are a few tiny planchet chips just left of the date and another on the rim at ER in LIBERTY, all as struck, plus a tiny hairline scratch in the field under star 5. Lustrous bluish steel brown with attractive, satiny surfaces and hints of faded mint red remaining in protected areas. Sharply struck EDS, die state a. The tops of a stray 1 & 8 are clearly visible in the dentils under the normal 1 & 8 in the date. Ex Lahman sale by Abe Kosoff 2/63 (lot not recorded)-John D. Wright.



500. 1856 N-21 R2 MS60. Italic 56. Lustrous light steel brown with traces of mint red remaining on the obverse, 20% of the faded mint color showing on the reverse. The surfaces are satiny and display only a few marks, including a tiny rim nick at star 2 and splashes of darker bluish steel toning at TA in STATES, the O in OF, and on the E in AMERICA. MDS, die state b early. Ex Jim Frans 10/87-John D. Wright.



503. 1857 N-1 R1 AU50. Large Date. Choice glossy medium brown with satiny luster in the fields and protected areas. The only marks are a thin vertical nick in the field right of the inner curl and a pair of tiny pinpricks under star 5. Otherwise this cent is choice, and the eye appeal remains excellent. Nicely struck E-MDS, die state a. The tops of the repunched 1 & 8 show clearly in the dentils under the 18. Ex John D. Wright.



501. 1856 N-22 R6-VF20. Italic 56. Ten points sharper but lightly burnished and retoned a mostly glossy reddish steel brown. There are some small rim nicks at stars 2, 3, 11, and 13, plus a patch of very fine roughness at stars 1-2. EDS, die state a.

504. Leather Bound Copy of the 2006 EAC Sale Catalog. All proceeds go to the club.

Mail Bid Form

I hereby authorize M & G AUCTIONS to execute the following bid(s) at the auction to be held

Please buy the following lot(s) for me at the price(s) not exceeding those shown. The bid(s) is made subject to the "Terms of Sale", and I agree to remit promptly on receipt of invoice or notification that the bid(s) is successful. This signed bid sheet constitutes an agreement between me and M & G AUCTIONS.

NAME _____

ADDRESS _____

CITY _____ STATE _____ ZIP CODE _____

SIGNATURE _____ PHONE () _____

EAC# _____

IF NECESSARY, PLEASE INCREASE MY BID(S) BY:

10% 20% 30% Other _____ %

TERMS OF SALE

1. This is a private sale. Participation is by invitation only and is limited to members of The Early American Coppers Club or invited guests. The auctioneer reserves the right to refuse to honor any bid which, at his sole discretion, he feels is not submitted in good faith. The auctioneer may withdraw any lot, without prior notice, for any reason whatsoever.
2. The highest bidder acknowledged by the auctioneer shall be the buyer. In case of dispute the auctioneer may at his sole discretion reopen a lot. In all cases the auctioneer's decision shall be final and binding on bidders.
3. All sales are payable in U.S. funds immediately upon receipt of invoice unless other arrangements have been made prior to the sale. Lots delivered in state of sale are subject to all applicable state and local taxes unless appropriate permits are on file with us.
4. Postage will be added to the invoice of all successful mail bidders.
5. A 10% buyers fee will be added to all invoices.
6. Please keep in mind this is not an approval sale. All sales are considered final. Sales to the floor may not be returned for any reason save authenticity. Sales to mail bidders are final unless lot proves to have been mis-described.
7. Lots will be available for viewing at the 2006 EAC Convention in West Palm Beach, or by appointment.
8. Mail bids or phone bids will be accepted up through the day of the sale. All bids will be reduced. Lots will open at one increment above second highest mail bidder. Bidding will proceed as competition dictates with the lot either selling to the floor or to the mail bidder at one increment above the second highest bid.
9. Consignor may bid or place a reserve bid on their own coins. Any coins repurchased by a consignor will be announced as a pass. Principals of the auction firm may consign or may bid on coins in the sale.

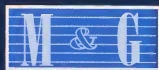
MAIL BIDS

Please mail all bids to: M & G Auction
P.O. Box 161055
Altamonte Springs, FL 32716
Phone 407-682-9592 • Cell 407-221-1654

Please fax all bids to: 972-668-2126
(PLEASE CALL FIRST)



Copyright © 2006



P.O. Box 1510
Frisco, Texas 75034
972-668-1575