



Chris McCawley and Bob Grellman
present the
2007 EAC Convention Sale
April 28, 2007

Chris McCawley - Bob Grellman

present

the

2007 EAC Sale

**April 28, 2007, 7:30 p. m.
at the St. Louis Airport Hilton**

10330 Natural Bridge Road, St. Louis, Missouri, 63134-3303

Welcome to the 2007 EAC Sale.

The sale will be held Saturday night April 28 at 7:30 p.m., at the St. Louis Airport Hilton Hotel in St. Louis, Missouri.

Lot viewing will be held April 25-28 at the Early American Coppers Club Convention. We welcome your participation whether in person, by mail, or by fax bid. Please feel free to call Chris McCawley (972-668-1575) or Bob Grellman (407-682-9592) to discuss any lot in the sale.

Mail bids should be directed to Bob's Florida address (P.O. Box 161055, Altamont Springs, FL 32715-1055) or call before faxing (972-668-2126).

This is a private sale, you must be a member of EAC to bid - please read our terms of sale before bidding.

2007 EAC Sale

COLONIALS



1. 1787 New Jersey Maris 6-D Rarity-1 VF25. Slightly sharper with microscopic granularity under a rather glossy dark steel brown and olive patina. No verdigris or notable marks. Later die state where the 87 in the date is faint while everything else is complete and clear.



2. 1787 Fugio Cent Newman 17-S.1 Rarity-5 VG10. The obverse is considerably better, close to VF20, while the reverse is weaker and rough. No marks or verdigris, but there is a small patch of dark planchet impurity at the 8 in the date and some more on the opposing side on the ring at K-4. Slightly glossy medium brown with darker olive brown toning in protected areas of the obverse.

3. (1792-94) Kentucky Halfpenny Electrotpe copy of Breen-1155 EF45. Glossy medium brown and darker chocolate. No marks or visible base metal, but the surfaces are wavy. Ex Jules Reiver.



4. 1794 Talbot Allum & Lee Cent with New York Breen-1029 VF25. Attractive glossy steel brown with chocolate toning in protected areas. No defects other than a few trivial contact marks. Variety with a small ampersand (&) on the obverse and a large one on the reverse. Struck in medal alignment, head-to-head. Removed from a PCGS slab graded VF30 (PCGS label included).



5. 1833 Liberia Cent VF25. Slightly sharper but cleaned and retoning bluish steel brown and chocolate with faded red in protected areas. Otherwise free of notable defects. This piece is attributed as KN-TN2 and Colver/Harley (C/H)-8, supposedly Rarity-8 with only 2 known, including this piece. Struck by the US Mint for the American Colonization Society (a colony of freed slaves from the United States). See Randy Snyder's detailed article covering these pieces in the September 2006 issue of Penny-Wise, pages 200-209, where he lists this variety as a mating of the obverse-1 die with reverse-D.

TOKENS & MEDALS

6. 1837 Hard Times Token Low-22 Rulau HT-36 R3 VG8. Sharpness VF20 but NOT was crudely smashed away causing a bulge on the bust. Choice glossy chocolate brown. Ex Les Heilbronner 7/84-John D. Wright.

7. 1837 Hard Times Token Low-33 Rulau HT-48 R1 VF35. Ten points sharper with several fine pin scratches in the obverse fields. Frosty medium brown and chocolate. Struck in medal alignment, head to head. Ex Harley G. Miller 10/87-John D. Wright.

8. 1837 Hard Times Token Low-38 Rulau HT-62 R1 VF30. Ten points sharper with faint hairline scratches in the reverse fields. Glossy chocolate brown. Struck in medal alignment, head to head. Ex Les Heilbronner 7/84-John D. Wright.



9. 1837 Feuchtwanger cent Low-120 COPY EF40. Appears to be a struck copy made from transfer dies. The reverse die shows extensive rust while the obverse is smooth. Glossy medium chocolate and olive brown. Ex Christian Hubscher Auctions 8/7/83:680.

10. 1838 Hard Times Token Low-55 Rulau HT-63 (LOCO FOCO) R1 VF35. Nice glossy medium brown. Struck in medal alignment, head to head. Ex Les Heilbronner 7/84-John D. Wright.

HALF CENTS



11. 1841 Hard Times Token Low-69 Rulau HT-58 R1 AU50. Glossy bluish steel brown and chocolate with frosty luster in protected areas. Ex Les Heilbronner 8/84-John D. Wright.



12. 1859 S. H. Black Electrotyper token Miller NY-63 VF25. Glossy medium brown with reddish chocolate in protected areas. The copper layer is intact. A nice electrotype advertising card for a fellow in that business. Ex Ken Mote 11/85-John D. Wright.

13. 1859 S. H. Black Electrotyper token Miller NY-63 VF20. Ten points sharper with some minor contact marks and no copper layer, only the dark gray base metal showing. No trace of copper layer remains, and it may not have been added. Ex Ken Mote 7/88-John D. Wright.

14. 1860 Samuel H. Black Electrotyper token Miller NY-67A VG8. Sharpness VF20 but the surfaces are uneven and cleaned. Everything remains complete and easily readable. Bright coppery tan with dark gray highpoints where the base metal shows through. Ex Larry Briggs 1/99-John D. Wright.

15. 1860 Friend & Black Electrotypers token Miller NY-65 VF20. Ten points sharper with some dull contact marks. Glossy medium brown and chocolate. The copper layer is intact, no base metal visible. Ex Les Heilbronner 5/87-John D. Wright.

16. 1860 Friend & Black Electrotypers token Miller NY-65 F12. A bit sharper with some minor roughness, mostly at the top of the obverse and bottom of the reverse. Glossy chocolate brown with medium brown highpoints. Ex Ken Mote 11/83-John D. Wright.

17. 1982 EAC 15th Anniversary Medal in Copper MS65. Bright and beautiful in all respects.

18. 1793 Cast copy of C-2 VF25. Glossy dark steel. No marks, but the surfaces are covered with microscopic granularity. Date and legends clear. A gift from Del Bland to Jules Reiver 3/3/83.



19. 1793 Electrotype copy of C-3 VF30. A nice example made from a piece grading at least EF40. There are a couple tiny contact marks on both sides and traces of base metal show through on the highpoints. Glossy chocolate brown.



20. 1793 C-4 R3 G4. Sharpness F15 or better, especially on the obverse, but moderately corroded. No verdigris, and the only mark is a dull rim nick off the wreath stem right of the fraction. The date and LIBERTY are easily readable and the portrait is strong. The reverse is weaker and less than half the legend can be made out on that side. The obverse clearly net grades higher than the reverse, the overall G4 assessment a blend of the two. Dark olive with slightly glossy light brown highpoints.



21. 1794 C-2a R2+ VG7. Small Edge Letters. The obverse is slightly better while the reverse is a bit weaker. Glossy steel brown and chocolate with lighter brown toning in protected areas. Only a few minor marks, all consistent with the grade and blending perfectly into the natural toning. The notable mark is a short, dull diagonal scrape over the T in CENT into the wreath at right. No corrosion or verdigris. MDS, Manley state 3.0. The date and legends are complete and clear.



22. 1794 C-6a R5+ G4. Small Edge Letters. Sharpness VG8 or slightly better but covered with fine to moderate roughness. No verdigris. A couple dull, light marks in the field over the bust tip and a rim bruise at NIT are the only notable marks. Recolored a slightly glossy dark steel brown and chocolate with slightly lighter steel brown highpoints. The date and legends are clear except for weakness at BERTY and ICA. Ex M&G Auctions 8/19/95:007.



23. 1794 C-8 R5 VG10. Sharpness VF25 but covered with uniform fine roughness under a glossy dark olive and steel patina. There are traces of shallow verdigris in some of the protected areas, but they are not a distraction. The date and legends are complete and clear. LDS. Manley state 2.0. Ex M&G Auctions 9/13/97:004.



24. 1794 C-8 R5 VG8. Slightly sharper but the surfaces are covered with faint roughness and there are several light vertical scratches down the highpoints of the portrait. No verdigris, and the marks are insignificant for the grade. Chocolate and steel brown. The date is bold and the legends are complete. EDS. Manley state 1.0. The reverse is misaligned to K-4, as usual for this variety.



25. 1795 C-5b R4 F15. Thick Planchet. Sharpness VF30 or a bit better but there are some shallow pitmarks on the upper half of the obverse, and many of them contain traces of dark greenish verdigris. There are traces of extremely fine roughness on the reverse as well, but most of the planchet is reasonably smooth. No significant contact marks. The date is complete and easily readable, although it is not strong (a relatively weak date is typical for these thick planchet strikes). Rather glossy reddish chocolate and dark chocolate brown. Weight 108.5 grains. Removed from an NCS slab graded AU details, environmental damage (NCS label included, and it shows the attribution and Reiver provenance). Ex Jim McGuigan 6/6/84-Jules Reiver. Heritage 1/24/06:19021.



26. 1795 C-6a R2 VF30. Struck on cut-down 1794 TAL cent with New York. Slightly sharper but there are some faint, dull hairline scratches slanting through the cap, all blending perfectly into the natural patina. Otherwise the surfaces are smooth and quite attractive. Glossy dark chocolate brown and steel. The only notable mark is a small rim nick under the fraction. Nicely struck LDS Manley state 2.0. Undertype from the TAL cent shows clearly under the date and to the left where the RK from YORK is obvious in addition to other parts of the TAL legend.

27. 1796 Electrotpe copy of the C-1 (No Pole) obverse mated with the reverse of 1795 C-1 and 2 VG10. A whimsical mating of dies, but an inexpensive hole-filler for that pesky 1796 no-pole. A point or two sharper with a scratch through AMER and traces of microscopic porosity on the obverse. Glossy dark steel and chocolate. The date and legends are complete and clear. Ex Jules Reiver.

28. 1797 C-1 R2 EF40. 1 above 1 variety. Sharpness near mint state but there is uniform extremely fine roughness under a frosty dark steel and olive patina. No verdigris or signs of contact. The only notable marks are a tiny planchet chip at the dentils right of the chin and a barely visible planchet fissure at the rim left of the top of the cap, both defects as struck. Late die state, although not quite the latest, Manley state 5.0. The die cracks are well advanced, RTY is very weak, and CA is gone. Nice eye appeal in spite of the dark toning and imperfect surfaces.

29. 1797 C-1 R2 AG3. 1 above 1 variety. Sharper in places but uneven wear, which is typical in the later die states of this variety. Mostly smooth but there is some porosity on the upper right part of the reverse. Recolored a slightly glossy steel brown and chocolate with splashes of darker olive. The date is clear, including the misplaced additional 1 in the date. Late die state, Manley state 5.0 early.



30. 1797 C-2 R3 F12. Struck over Talbot Allum & Lee Cent. Slightly sharper but there are two minor rim nicks before the face and a small punchmark at the end of the right wreath stem. The surfaces are smooth, free of any hint of corrosion or verdigris. Lightly cleaned and nicely retoned glossy chocolate brown. Excellent eye appeal in spite of the minor flaws. Struck over a cut-down TAL cent with clear under-type visible over ERICA. Removed from an ANACS slab graded VF details net F15 (ANACS label included).

32. 1800 C-1 R2 MS60. Lustrous bluish steel brown and chocolate with frosty tan faded down from mint color in protected areas, especially on the reverse. There are a few spots of darker steel toning in the obverse fields plus a small spot of verdigris in the leaves under CA in AMERICA. The only notable signs of contact are some light vertical nicks on the cheek close to the lips. MDS. Manley state 3.0. Dentil crumbling is obvious from left of the hair ribbon clockwise to over LIB where it is strongest.



31. 1797 C-2 R3 G5. Clipped Planchet. Several points sharper but there is fine porosity scattered over both sides. No verdigris or contact marks. The date and legends are mostly clear, just a few letters weakened by the roughness. Lightly cleaned and retoned a slightly glossy steel brown and chocolate with darker steel in the roughened areas. A curved planchet clip nearly reaches the tops of BE in LIBERTY and the base of the 2 in the fraction. Comes with an NCI (Numismatic Certification Institute, a Heritage affiliate since dissolved) photo grading certificate as VG8.



33. 1800 C-1 R2 VF30. Glossy dark steel brown and olive. Very slightly sharper but the obverse is covered with extremely tiny contact marks, none visible without the aid of a strong glass. Otherwise very nice for the grade. M-LDS. Manley state 4.0. Removed from an NGC slab graded VF30 (NGC label included).



35. 1802/0 C-2 R3 VG8. Overdate 2 over 0. Sharpness F15 or better but the surfaces are covered with microscopic roughness and there are patches of shallow verdigris in protected areas of the reverse. An old, light scratch from just below the chin to the dentils at right is the only notable sign of contact. Slightly glossy dark steel. E-MDS, Manley state 2.0. The date and overdate are bold while the legends are complete and strong except for the usual weakness at ENT in CENT.



36. 1802/0 C-2 R3 G5. Overdate 2 over 0. A point or two sharper but covered with very fine roughness, strongest at ES-O. No verdigris, and a tiny planchet chip on the rim under the 8 in the date is the only notable mark. E-MDS, Manley state 2.0. The date is clear and the overdate is obvious.



37. 1802/0 C-2 R3 AG3. Overdate 2 over 0. Sharpness VG8 but pitted on both sides, strongest on the upper right part of the reverse. A dull dent at TAT and a scrape at the dentils left of the fraction are notable as well. No verdigris. The 2 of the date is weak thanks to a pitmark, but the rest of the date is clear. Medium steel brown.



38. 1803 C-1 R1 VF35. Struck-through line on Obverse. Choice lustrous medium brown with frosty lighter brown in protected areas. A spot of darker chocolate toning shows on the leaf under TE in STATES. Choice except that a struck-through line from a piece of string or wire stuck to the die meanders from the earlobe to the rim right of the Y. LDS, Manley state 3.0. There are two tiny but clearly defined rim cud breaks right of the bust tip not mentioned in the Manley book. Ex M&G Auctions 1/8/94;40-George Trostel-Superior 6/2000:54.

34. 1802/0 C-2 R3 F12. Overdate 2 over 0. Struck over Spoiled Cent. A bit sharper with too many light contact marks for the higher grade, including a few near the dentils before the face and a dull hairline scratch at the T in CENT. Some of these "marks" may be remnants of the cent undertype, but the only undertype that is clearly evident is an "E" in the field before the eye. The eye appears to be distorted by another letter, possibly an "N". The surfaces are reasonably smooth but a strong glass reveals traces of very faint roughness. Glossy chocolate brown with slightly lighter steel brown highpoints. M-LDS, Manley state 4.0 early. Die rust is evident on both sides, but it has not become strong. The date is bold and the overdate is clear.



41. 1803 C-2 R4 G5. Slightly sharper but there is a dull depression on the rim over the Y in LIBERTY. Glossy steel brown and chocolate. Terminal die state. Manley state 7.0, with a strong cud break at STAT. The date is bold and the legends are clear.



39. 1803 C-1 R1 AU50. Lustrous steel brown with frosty golden tan covering the protected areas on both sides. Closer to mint state in sharpness, but there is a short, dull scratch on the right side of the D in UNITED and a disjointed scratch from the dentils over that N up to the just below the left side of the H in HALF. These marks are not especially distracting and the overall eye appeal of this piece is excellent. M-LDS. Manley state 3.0 early.

40. 1803 C-2 R4 G5 (ANACS slabbed as genuine but damaged & corroded). Sharpness a point or two better but covered with uniform very fine roughness. No verdigris, and the only mark of any consequence is a small dig in the field off the chin. Dark steel brown and olive. EDS. Manley state 1.0. The date and legends are complete and clear.



42. 1803 C-3 R2 EF40. **Double Struck Reverse, Obverse Brockage Maker.** Slightly sharper but there is a small spot of shallow greenish verdigris under the left side of the 0 in the date. Otherwise free of any notable defects. Glossy steel brown and chocolate with frosty lighter steel brown in protected areas and darker steel toning on the highpoints. MDS, Manley state 3.0. Double struck, but the offset between impressions is small, no more than a millimeter. The doubling is sharp and obvious on every part of the reverse, but the obverse displays no hint of doubling. That side must have been impressed against a new blank planchet rather than the obverse die during the second strike, thus serving as a "die" for an obverse brockage on the second planchet.

43. **Pair of Half Cents, 1803 & 1808.** Includes 1803 C-4 grading VG8 net G4 for corrosion and cleaning and 1808 C-3 LDS grading G6 and showing a minor planchet clip at TED-S. Lot of 2 coins.



44. **1804 C-4 R5 VG7.** Sharpness F12 but there are too many contact marks for the grade, including a collection of them at the eye into the field at right. No roughness or verdigris. Glossy reddish chocolate brown. LDS, Manley state 3.0.

45. **1804 C-6 R2 VG10. Spiked Chin.** Ten points sharper but a bit rough and there are traces of shallow dark olive scale in protected areas. Rim nicks at the bust tip and over ST in STATES are the notable marks. Slightly glossy steel brown and chocolate mixed with reddish chocolate and darker olive brown. MDS, Manley state 8.0, Braig 5.5. The spiked chin feature is clear.



46. **1804 C-6 R2 VF25+.** Spiked Chin. Sharpness VF35 with some light contact marks on the obverse, including a pair of faint, dull scratches on the portrait and a nick on the throat. Glossy mottled mix of chocolate, olive brown, and reddish chocolate with some frosty lighter steel brown on the reverse. LDS, Manley state 11.0, Braig 8.0. The spiked chin feature is clear and the reverse cud breaks are bold.

47. **1804 C-8 R1 VF30 (NGC slabbed as EF45). Spiked Chin.** Very slightly sharper with a few light contact marks, including a dull nick on the lower half of the N in CENT. Dark steel brown and chocolate with traces of frost in protected areas of the reverse. Rare late die state, Manley state 5.0. The die crack up from the left top of the R in LIBERTY is strong and the area over LIB is clearly raised. The spiked chin feature is obvious.



48. **1804 C-8 R1 VF35. Spiked Chin.** Five points sharper but darker than you like to see for a grade this high. Glossy dark olive and steel brown with frosty lighter brown toning in protected areas, especially on the reverse. The only marks are a faint hairline scratch close before the neck and another in the field before the face. M-LDS, Manley state 5.0 early. The retained cud break over LIB is rising but is not as much as on the following example. The spiked chin feature is strong. Ex Wally Gilligan, B&M 5/27/94:86-Dr. Wallace Lee, Superior 5/25/03:203.



49. **1804 C-9 R2 EF45.** Glossy chocolate brown with frosty flowline luster covering the protected areas, especially on the reverse. Great eye appeal, just a few trivial contact marks in the obverse fields from choice. Late die state, Manley state 5.0, with a strong cud break at RTY.

50. **1804 C-9 R2 G6.** Slightly glossy steel and chocolate. No verdigris or notable marks, but there is extremely fine porosity covering the fields and protected areas. Late die state, Manley 5.0, with a cud break connecting RTY to the rim.



51. **1804 C-10 R1 AU50.** The obverse is lustrous bluish steel and olive with frosty medium brown on the left side. The reverse is a more uniform lustrous light brown with steel brown highpoints. Great eye appeal from the flowline luster covering both sides. No marks or other distractions. Late die state with a broadstruck appearance thanks to a planchet that is a wider than normal.



52. 1804 C-11 R2 VF30. Plain 4 with Stems. Five points sharper but lightly cleaned and retoned glossy light olive brown with lighter reddish brown toning in some of the protected areas. No roughness or notable marks. MDS. Manley state 2.0.



53. 1804 C-12 R2 AU50. Croslet 4 without Stems. Frosty steel brown with lustrous tan and light steel brown faded down from mint color in protected areas. Traces of faded mint red show around AME. A small planchet chip on the rim right of the bust tip is the only notable mark. MDS. Ex Mid-American Rare Coin Auctions 2/15/85:41.



54. 1804 C-13 R1 AU50. Plain 4 without Stems. Five points sharper but there is a sharp nick in the field above the upper end of the hair ribbon, and just below this nick is a shallow planchet flake. Otherwise this piece is quite nice with eye appeal consistent with a choice AU. Frosty steel brown and chocolate with traces of faded mint red in protected areas of the reverse. MDS, Manley state 2.0.

55. 1805 C-1 R2- VG10. Stemless Wreath. Slightly sharper but lightly cleaned and nicely retoned glossy medium brown and light olive. A dull mark in the bottom of the hair ribbon, another near the rim behind the head, and a couple more on the left side of the reverse are the only marks on smooth surfaces. MDS.



56. 1805 C-3 R4 F12+. Small 5 with Stems. Mostly glossy olive and steel brown. The only marks are a small nick over the upper end of the hair ribbon and light rim bruises at N and D in UNITED. The date and legends are strong. Not perfect but still quite nice for the grade. LDS. Manley state 2.0. The obverse swelling is strong.

57. 1805 C-3 R4 VG10 (SEGS slabbed as F12). Small 5 with Stems. A couple points sharper with a small pit at the bottom of the eye, another off the bust tip, and a few others in the field under the hair ribbon. The surfaces are decent otherwise but not perfect as extremely fine granularity covers the fields and protected areas. Medium brown with darker steel brown and olive in protected areas. The date and legends are bold except for the usual weakness inside the wreath. E-MDS. Manley state 1.0.



58. 1805 C-3 R4 VG8+. Small 5 with Stems. Glossy chocolate brown, the obverse delicately mixed with some reddish chocolate and olive tones. The obverse is very slightly weaker while the reverse is stronger, perhaps a result of the advanced obverse swelling. The surfaces are smooth and quite attractive except for a spot of very light roughness low on the neck. Overall quite nice for the grade. LDS. Manley state 2.0. The date and legends are complete and strong.



59. 1805 C-3 R4 VG7. Small 5 with Stems. A point sharper but covered with extremely faint granularity under a glossy dark olive and chocolate brown patina. No verdigris, and the notable marks are a thin diagonal nick left of the hair ribbon and a dull rim nick at the second T in STATES. LDS. Manley state 2.0. The swelling in the field before the portrait is well advanced. The date and legends are complete and strong except for the usual weakness at HA and CE in HALF CENT. Ex Roger Cohen-1998 EAC Sale, lot 60.

60. 1805 C-4 R2- VG10. Large 5 with Stems. Sharpness VF20 but dark and covered with uniform extremely fine granularity. Slightly glossy dark steel. No verdigris, and the only mark is a tiny rim nick left of the hair ribbon. The date and legends are complete and clear. LDS. Manley state 2.0.

61. 1806 C-1 R1 VF30. Stemless Wreath. Slightly sharper but there are a few too many tiny contact marks for the higher grade. The notable marks are a small rim nick left of the hair ribbon and another at the E in UNITED. Glossy chocolate brown with flowline luster in protected areas. MDS, the reverse rotated 30 degrees CW.



62. 1807 C-1 R1 VF25 (ICG slabbed as VF35). Slightly sharper with some light contact marks on both sides, including a few fresh ones under UN. Frosty medium brown and chocolate with darker olive steel toning at AT in STATES. Nicely struck EDS. Manley state 1.0.



63. 1807 C-1 R1 VF35+. Five points sharper but there is a shallow contact mark in the field close before the chin and a trace of verdigris dusted inside the U in UNITED. Otherwise the surfaces and eye appeal are excellent, nearly choice for the sharpness grade. Glossy olive brown and chocolate with flowline luster covering the fields and protected areas. Very close to EF40. M-LDS. Manley state 3.0 early. The reverse is rotated 10 degrees CCW.



64. 1808/7 C-2 R3 F12. Overdate 8 over 7. Glossy chocolate and steel brown with frosty lighter steel brown covering protected areas. There are a few spots of darker toning at the top of the obverse and a couple more at the top of the reverse. Smooth surfaces with some minor marks, including a light rim bruise before the eye, another at the I in AMERICA, and a rim nick at the E in STATES. EDS, Manley state 1.0. The date and legends are complete and strong, and the overdate feature is clear.



65. 1808/7 C-2 R3 VG10. Overdate 8 over 7. A bit sharper with very light roughness hiding under a glossy patina of dark olive brown with light chocolate devices. No verdigris, and the only significant mark is a dull rim nick at TA in STATES. EDS, Manley state 1.0. The date and legends are complete and clear, and the overdate feature is obvious.



66. 1808/7 C-2 R3 VG10. Overdate 8 over 7. Sharpness VF20 but there is a patch of light corrosion in the field left of the hair ribbon and the reverse is covered with fine roughness, including specks of greenish verdigris at TATE. A small dig at the left foot of the A in HALF is the only significant contact mark. The obverse is slightly glossy dark steel brown and the reverse is a slightly lighter shade of reddish chocolate. The date and legends are complete and strong, and the overdate is bold. MDS, Manley state 3.0, with a strong cud break at TY.



67. 1808/7 C-2 R3 G6. Overdate 8 over 7. Tab Double Strike. A few points sharper but covered with fine granularity. No verdigris or marks. Dark steel brown and chocolate. The date and legends are complete and clear. A tab double strike shows over BER in LIBERTY, but the tab does not show any of the die details. This tab may have occurred first, before the normal strike, but I'll leave that to you to figure out.



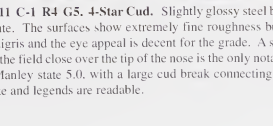
68. 1808 C-3 R1 EF45. Slightly sharper but lightly cleaned and nicely retoned lustrous chocolate and medium brown with traces of frosty tan in some of the protected areas. There are a few light contact marks on the neck and a nick hidden in the drapery over the second 8 in the date. MDS, Manley state 3.0. The reverse is rotated 10 degrees CW. Excellent eye appeal for the grade.



69. 1809 C-1 R4 Fair-2. Slightly sharper but corroded. No verdigris, but there is a dig at the eye and a couple rim nicks above the head. The date is clear and most of the reverse legend remains visible, although weakened by the roughness. Slightly glossy medium brown with darker olive and steel in protected areas. EDS, Manley state 1.0.



70. 1809/6 C-5 R1 VF30. Overdate 9 over 6 (or inverted 9), Clipped Planchet. Sharpness EF45 but there is a small dent under the H in HALF that caused a slight bulge on the opposing side at the face. Otherwise the surfaces and eye appeal are excellent. Glossy chocolate brown with frosty luster in protected areas. A small planchet clip affects the dentils at stars 6-7 and at UN. MDS, Manley state 2.0. The overdate feature is clear.



71. 1811 C-1 R4 G5 4-Star Cud. Slightly glossy steel brown and chocolate. The surfaces show extremely fine roughness but there is no verdigris and the eye appeal is decent for the grade. A small, dull nick in the field close over the tip of the nose is the only notable mark. LDS, Manley state 5.0, with a large cud break connecting stars 1-4. The date and legends are readable.

72. 1825 C-2 R1 VF25. Five points sharper with some minor contact marks, none visible without the aid of a glass. Glossy steel brown and chocolate with tiny specks of darker olive toning sprinkled about the obverse. LDS, Manley state 3.0.

73. 1825 C-2 R1 VG10. Misaligned Dies. Glossy chocolate and dark steel brown. A few tiny marks but no roughness. LDS, Manley state 3.0. The obverse is slightly misaligned to K-4 but the reverse is properly centered on the planchet.



74. 1826 C-1 R1 EF45. Five points sharper but lightly cleaned and nicely retoned glossy medium brown and chocolate with delicate overtones of sea-green and light bluish steel. A small spot of darker toning at the rim left of star 2, another left of star 4, and a third over the upper end of the hair ribbon are the only notable marks. LDS, Manley state 5.0. Ex Elliot Goldman 6/83-Colonel Steve Ellsworth collection.

75. 1826 C-1 R1 F15. Five points sharper but cleaned and retoned glossy medium brown and chocolate. No roughness or significant marks. LDS, Manley state 5.0.

76. 1826 C-2 R3+ F15. Glossy medium brown with traces of chocolate brown and olive on both sides. No defects, only moderate wear. LDS. Removed from an ANACS slab graded VF30 (ANACS label included, and it shows the attribution).



77. 1828 C-2 R1 AU50+, 12-Star Obverse. Lustrous bluish steel brown and chocolate with lighter steel brown covering the protected areas, especially on the reverse. Satiny mint frost shows in the protected areas of the obverse. The notable marks are a very faint scuff on the cheek and reddish chocolate toning on the E in CENT. E-MDS, Manley state 2.0 early.



78. 1828 C-2 R1 VF35. 12-Star Obverse. Five points sharper but there is a splash of extremely fine roughness under the first A in AMERICA and a light scratch near the dentils above the head. Glossy chocolate and steel brown with frosty light brown in protected areas. MDS, Manley state 2.0.

79. 1828 C-3 R1 VF35. Attractive glossy medium brown and chocolate with frosty luster in protected areas. No defects and excellent eye appeal. LDS, Manley state 4.0.

80. Trio of Half Cents, 1828-1832, all grading F15. Includes 1828 C-3 R1 LDS, Manley 4.0; 1829 C-1 R1 LDS, Manley 2.0; and 1832 C-1 R2 MDS. A couple are slightly sharper with minor defects. All are glossy brown and chocolate. Lot of 3 coins.



81. 1833 C-1 R1 AU58. Lustrous chocolate and steel brown with overtones of bluish steel. A tiny rim nick just left of the date and a few microscopic contact marks scattered elsewhere on the obverse, none notable. Excellent eye appeal, very close to mint state. MDS, Manley state 2.0.

82. 1833 C-1 R1 VF35. Glossy steel brown and chocolate. Close to EF40 but a few too many tiny contact marks for a higher grade. EDS, Manley state 1.0.

83. Trio of Half Cents, 1834 & 1835, grading VF20 to VF25. Includes 1834 C-1 R1 LDS, Manley 3.0; 1835 C-1 R1 LDS, Manley 2.0; and 1835 C-2 R1 MDS. A couple are slightly sharper with minor defects, but all are glossy brown and chocolate. Lot of 3 coins.



84. 1834 C-1 RI MS63. Lustrous bluish steel brown and chocolate with faded mint color covering about 25% of the planchet, mostly on the reverse. No spots or stains. The best identifying marks are a tiny rim nick at the U in UNITED and two more at ME in AMERICA. Great eye appeal for the grade. LDS, Manley state 3.0.



85. 1834 C-1 RI EF45. Very slightly sharper but lightly cleaned and nicely retoned glossy light greenish olive brown with traces of frosty light reddish brown toning in protected areas of the obverse. No marks or other defects. Very late die state with extensive die clashmarks on both sides, especially on the obverse. These clashmarks are very similar to the ones found on the latest die state of 1833 C-1, but are not mentioned in the Manley book for 1834 C-1.

86. 1834 C-1 RI VF35. Sharpness near mint state with a pinscratch from star 1 up to just under star 5 and a couple lighter ones at star 13, plus a stronger one under the 18 to near the dentils below the bust tip. Otherwise the surfaces and eye appeal are quite nice. Lustrous medium brown and a splash of darker steel under ENT. MDS, Manley state 2.0.



87. 1835 C-1 RI AU55. Very close to mint state but there is a dull scuff on the I in AMERICA and tiny marks on the cheek from fine debris on the die. Lustrous dark bluish steel brown and chocolate. LDS, Manley state 2.0.

88. 1835 C-1 RI VF30. Glossy medium brown. A tiny rim bruise left of the date and a small spot of darker toning under the F in HALF are the only notable defects. LDS, Manley 2.0.

89. 1835 C-1 RI VF20. Sharpness VF25 but lightly cleaned and nicely retoned glossy medium brown and chocolate. A dull rim nick at the O in OF is the only mark. E-MDS, Manley state 1.0.

90. 1835 C-2 RI VF35. Close to EF40 but there are too many tiny contact marks for the higher grade, including a tiny rim nick under the 5 and another right of star 11. Glossy chocolate brown with frosty lighter brown in protected areas. MDS, Manley state 2.0.



91. 1837 Half Cent Token Low-49 (Hard Times Token) VF30. Glossy chocolate and olive brown with lighter steel brown highpoints. No defects, only light wear. Nicely struck.

92. 1844 Cast copy of the proof original "Mint" state-60. Glossy medium reddish brown. Some dirt scattered about but no notable defects other than microscopic traces of underlying base metal at the rims. Ex Jules Reiver.



94. 1849 C-1 R2- AU58. Glossy medium brown with frosty lighter steel brown in protected areas. The only marks are a speck of carbon between star 5 and the dentils, a pinprick at the upper point of star 4, and a barely visible scrape in the leaves under the second S in STATES. EDS, Manley state 1.0.



95. 1851 C-1 R1 MS60+. Lustrous light bluish steel brown with generous traces of slightly faded mint color remaining on both sides, especially on the obverse. No spots or stains. The only notable defect is some weakness in the dentils over IT in UNITED, as struck. MDS. The repunching right of the base of the second 1 remains clear.



96. 1853 C-1 R1 MS60+. Very attractive lustrous bluish steel brown with faded mint color showing in the protected areas. Would be choice if not for a nick on star 5 and a couple tiny rim nicks over that star. M-LDS, Manley state 2.0. Removed from an NGC slab graded MS65BN (NGC label included, and it shows the attribution).



93. 1849 Breen I-B R6+ Proof-60. Proof-Only Small Date. Cohen Plate Coin. Golden tan and light olive with overtones of iridescent rose and blue steel in protected areas. The fields are nicely reflective with moderately deep mirrors on both sides, but they do show faint hairlines. No spots or contact marks. The best identifying marks are a small planchet void over the junction of the E & R in AMERICA and an irregular struck-through line under the E in CENT, both defects as struck. A nice example for the grade. This is the plate coin for the variety in the second edition of the Cohen book on half cents. Ex Julian Leidman 4/15/74-Jules Reiver, Heritage 1/24/06:19142.



98. 1853 C-1 R1 AU55. Mint state sharpness but there is some fine crud dusted into the protected areas. No marks. Glossy dark chocolate and olive brown with medium brown highpoints. Nice eye appeal, just darker than you like, especially for a mint state example. MDS, Manley state 2.0.

99. 1853 C-1 Cast copy in white metal VF35. Sharper with some marks, including a scratch at the dentils over the U in UNITED and a nick on the T in CENT. Frosty light steel with no hint of copper plating or anything else that might help it pass as a copper half cent.

100. 1856 C-1 R2 VF30. Ten points sharper with tiny nicks scattered over both sides, including some dull rim nicks on the reverse. Glossy medium brown with frosty luster showing through in the protected areas. MDS, Manley state 2.0.



101. 1857 C-1 R2 MS60. Frosty light olive with very faded red in protected areas, most likely from an old cleaning. A spot of very light corrosion in the dentils right of star 12 is the only notable mark. The surfaces are satiny and attractive in spite of the minor flaws. MDS.



97. 1853 C-1 R1 MS63+. Lustrous mint red fading to bluish steel brown, about half the original color remaining. (While 1853 half cents are often found with substantial amounts of original mint color thanks to a hoard, 1853 half cents with this much mint color are extremely rare.) No spots or stains. The only defects are a very light but rather long nick high on the neck and a small contact mark hidden in the dentils at star 13. Excellent eye appeal. Very close to MS64. MDS.

LARGE CENTS



102. 1793 S-1 Electrotype copy MS60+. Chain AMERI. A high-quality copy of the *Penny Whimsy* and Noyes plate coin. Even the vine & bars edge device is present. Lustrous medium brown with 10% of the red remaining. This one is almost too nice, as are several others in this offering. Ex Jules Reiver.

103. 1793 S-2 Electrotype copy AU50. Chain AMERICA. Attractive glossy medium brown and chocolate with traces of "mint" color. The obverse is flawless and looks genuine, but the reverse suffers from some small fissures (no doubt from the host original). The vine & bars edge device has been skillfully added, but traces of base metal show around the edge as well. Ex Jules Reiver.



104. 1793 S-3 R3- G5. Chain AMERICA. Some of the details are consistent with a slightly higher grade, but there are numerous contact marks on both sides. The notable marks are a rim bruise at TY, a rim nick well left of the date, a trio of light rim bruises on the reverse, and some nicks scattered about both sides. The color is a nice glossy medium brown with traces of darker olive in protected areas. The date is readable and the legends are complete although not strong.



105. 1793 S-3 R3- AG3. Chain AMERICA. Close to G4 but there is a dull dent at the rim just right of the Y in LIBERTY and an opposing one at TES in STATES. The surfaces are reasonably smooth, although a glass reveals microscopic roughness. The date is weak but readable and the reverse legend is faint but readable as well. Slightly glossy dark steel brown. Ex Jim Bishop 6/4/92-Sam Thurman.



106. 1793 S-4 R3 VF20 (SEGS slabbed as MS60 with Grainy Surfaces). Chain AMERICA with Periods. Sharpness EF40 but covered with fine to moderate roughness, strongest on the lower third of the obverse. There are traces of shallow greenish verdigris left of the L in LIBERTY and in a few protected areas on the reverse. The only marks are a few tiny rim nicks of no consequence. Dark olive and reddish steel. Nicely struck E-MDS. Breen state I.



107. 1793 NC-1 Electrotype copy MS63. Chain AMERICA. Frosty "mint" red fading to light steel brown, more than half the red remaining. Essentially as made from the *Penny Whimsy* and Noyes plate coin. Unfortunately the two halves were not properly aligned so the "copy status" of this piece is obvious without a glass (or much knowledge for that matter). Ex Jules Reiver.



108. 1793 S-5 R4 F12 but . . . The reverse was planed down and engraved into what appears to be an advertising card reading "JOBRIEN/AND/SON" on three lines. A screw hole is through the top of the obverse at ER in LIBERTY, and there are numerous contact marks scattered about the obverse as well. My guess is this piece was screwed onto something to serve as an identification tag. No corrosion or verdigris. The date and obverse details are clear. Glossy chocolate brown with lighter brown in protected areas of the obverse. A great item for the odd and curious collector (or the collector of odd and curious stuff).

109. 1793 S-6 R3 G4. Wreath Cent. A few points sharper but the surfaces are uneven showing a variety of marks. The color is an attractive glossy medium brown and chocolate and there is no hint of verdigris on either side. The 93 in the date is easily readable but the 17 is weak. The legends are complete.



110. 1793 S-8 Electrotype copy MS60+. Wreath Cent. Very attractive glossy medium brown and chocolate mottled with some darker olive on the obverse. Traces of the original red color remain on the obverse and the reverse shows at least 10% of the frosty red color. A small spot of silvery toning in the field near the dentils behind the head is the only notable defect. The vine & bars edge device is present. A highly deceptive electrotype copy that could "blow away" those guys at the local club meeting. Ex Jules Reiver.

111. 1793 S-8 Electrotype copy MS60. Wreath Cent. Choice glossy medium brown and chocolate. Flawless and very deceptive if not for traces of base metal showing through on the edge, which has the vine & bars device added. Another outstanding copy from the Jules Reiver collection.



112. 1793 S-9 R2 G6. Wreath Cent. Sharpness VF20 but covered with light to moderate corrosion, strongest on the reverse. No verdigris, but there is a scrape across the date weakening those digits, plus a couple rim nicks on the left side of the obverse. The date is still easily readable but portions of the reverse legend are severely weakened by the roughness. Slightly glossy chocolate brown with darker reddish chocolate in protected areas. LDS. Breen state VIII. Ex John Cloutier-Walter Reed.

113. 1793 S-9 Electrotype MS60 copy of an EF40 coin. Wreath Cent. Choice glossy bluish steel brown with 15% of the red remaining. The only mark is a small carbon spot between the tops of the C & A in AMERICA. Essentially as made, but the model cent appears to have graded EF40 or thereabouts. M-LDS. Breen state VII. Ex Jules Reiver.

114. 1793 S-9 Electrotype Copy VG8. Wreath Cent. Sharper but the rims are poorly formed causing depressions at the edges on both sides. Everything is readable and the central details have F12 sharpness. Glossy chocolate and medium brown. Ex Joe Gallio.



115. 1793 S-10 R4 AG3+. Wreath Cent. A couple points sharper with fine hairline scratches on both sides and microscopic roughness in protected areas, plus a shallow depression or pitmark in the field close over the bust. Somewhat glossy dark steel brown and chocolate with lighter highpoints from a delicate cleaning. The date is dull and weak but still readable and the legends are complete. Late die state with obvious swelling in the center of the reverse.



116. 1793 S-10 Electrotype copy MS63. Wreath Cent. Very attractive lustrous bluish steel and dark chocolate with traces of original red color on the obverse and 50% of the red remaining on the reverse. A gorgeous piece, if only it were the real thing! Late die state. The model for this piece was the *Penny Whimsy* plate coin, and the reverse is also shown in the Noyes book to illustrate the late die state. Another fantastic copy from the Jules Reiver collection.



117. 1793 S-11c R3-G4. Wreath Cent. Lettered Edge with single leaf following DOLLAR. A few points sharper but covered with microscopic porosity everywhere except on the lower left third of the reverse, which is rather smooth. No verdigris and the only marks are a couple dull nicks at the D in UNITED. Chocolate and steel brown, glossy in the smooth area on the reverse but closer to matte everywhere else. The date is weak but readable and the legends are complete although not strong. The lettered edge and single leaf features are clear.



118. 1793 S-11c Electrotype MS60 copy of an AU50 coin. Wreath Cent with Lettered Edge and Single Leaf. Choice glossy medium brown with 5-10% of the original red remaining. The only mark is a tiny planchet chip (from the model coin) in the border beads under the left side of the fraction. The edge is lettered and a single leaf follows DOLLAR. Another outstanding copy that could "pass" as the real thing if not for specks of base metal showing through on the edge. Ex Jules Reiver.



121. 1793 S-12 Electrotype MS60 copy of a VF35 coin. Liberty Cap. Highly attractive glossy bluish steel and chocolate brown with 30% of the red remaining. No defects other than the few trivial ticks transferred from the model coin. The model for this one was the ANS example, which also serves as the Noyes plate coin and the reverse is plated in Penny Whimsy. The edge lettering has been added, but it is not strongly impressed. EDS, Breen state 1. Ex Jules Reiver.



119. 1793 NC-2 Strawberry Leaf Electrotype copy AG3. A very attractive copy of the unique Strawberry that grades AG3. Smooth glossy medium brown. Traces of the seam around the edge show on this one, but it's still a very nice copy of a variety you probably won't find anywhere except Ebay. Ex Jules Reiver.



122. 1793 S-12 Electrotype copy of the VF35 ANS coin. Liberty Cap. Similar to the above lot, but this one has no original red color. Glossy steel brown and chocolate. No defects and excellent eye appeal. The edge lettering is readable but not strong.



120. 1793 NC-3 Strawberry Leaf Electrotype copy VG7. Slightly glossy medium brown and chocolate. The surfaces are covered with extremely fine roughness, no doubt transferred from the model coin. The model for this copy was the finest known Parmelee coin. The edge seam is visible on this one, and traces of base metal show through on the edge. Still, where are you going to find a better one? Ex Jules Reiver.



123. 1793 S-13 Electrotype MS60 copy of an AU50 coin. Liberty Cap. Choice glossy steel brown and chocolate with at least 10% of the original red remaining. No defects, essentially as made. The edge lettering is present but not strongly impressed. Another choice copy of a fantastic cent, the model for this one being the Noyes plate coin. EDS, Breen state 1. Ex Jules Reiver.



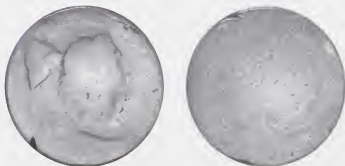
124. 1793 S-14 Electrotype MS60 copy of an EF45 coin. Liberty Cap. Choice glossy medium brown and chocolate with 5-10% of the red remaining. The edge lettering is clear. Another "perfect" copy of a beautiful model cent. The model for this one was the plate coin illustrated in *Penny Whimsy* and in the Breen book. Ex Jules Reiver.



127. 1794 S-17a R5- G5. Head of 1793. Sharpness F15, perhaps even better on the reverse, but moderately corroded. No contact marks and only minor traces of shallow verdigris. The date is strong and the legends are complete and clear. Nice detail for the variety. Slightly glossy dark olive with a couple thin streaks of reddish planchet slag streaking across the obverse. MDS, Breen state II.



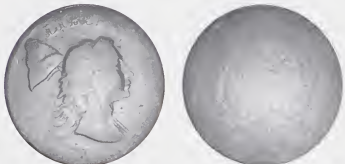
125. "1793" Smith Counterfeit with Reverse X of 1794. The obverse grades F15 or so thanks to the engraving while the reverse is not as sharp and is downgraded to AG3 due to light corrosion. The obverse is glossy medium brown and chocolate but the reverse is slightly glossy dark olive with lighter chocolate brown highpoints. From the Jules Reiver collection, earlier obtained as a gift from Stack's 7/20/84.



128. 1794 S-18a R6 Basal State-1. Head of 1793. Leaf points down. The obverse is a bit better but the reverse is nearly slick, only faint traces of the wreath and legend remaining on that side. The date is extremely faint, but it can be made out with some effort and imagination. The portrait is weak but complete. No roughness or verdigris. The only significant mark is a cut on the rim left of the shoulder. Lightly burnished and retoned glossy dark bluish steel and olive brown. The edge lettering and downward pointing leaf following DOLLAR are complete and strong, which is a big plus for an otherwise insignificant cent. Ex Gary Fitzgerald 1/87-John D. Wright.



126. "1793" Electrotype copy of a Smith Counterfeit VF35. Choice glossy chocolate brown. Smooth and problem-free, essentially as made. The reverse does not match any of the regular mint reverses, but is very similar to Sheldon's reverse F of 1793 (S-5, 6, 7, and NC-5). A copy of a counterfeit. Go figure. Ex Miller 11/3/74-Jules Reiver.



129. 1794 S-18b R4 AG3. Head of 1793. The obverse is a bit better, especially the portrait, but the reverse is weaker showing only a quarter of the wreath, none of which is clear. The date is easily readable, although the lower half is worn into the rim below, and LIBER is clear. Glossy chocolate and steel brown with frosty lighter brown in protected areas of the obverse. No roughness or corrosion. The only marks are some light scuffs on the reverse. The obverse is choice, just worn.

130. 1794 S-19b R4 G6 (ANACS slabbed as VF details net VG8). Head of 1793. Sharpness VF30 or so but lightly corroded. No marks, but there are specks of greenish verdigris scattered about both sides. The verdigris is not visible to the naked eye, but the surfaces are matte thanks to the roughness. The date and legends are complete and clear. Sharp but ugly.



131. 1794 S-19b R4 Fair-2. Head of 1793. Glossy chocolate and steel brown. A few trivial marks, including a pinprick left of the eye and a few light scratches on the reverse. Smooth surfaces, free of corrosion or verdigris. Basically just well worn. The date is gone except for hints of the tops of a couple numerals, and about a third of the legends are readable. The edge lettering is complete and the portrait is nearly complete. Quite nice for the grade.



133. 1794 S-23 R4+ F12. Sharpness VF20 with several rim bruises on each side, the strongest of these left of the bottom edge of the cap. Otherwise this cent is choice with outstanding surfaces and eye appeal. Glossy chocolate and medium brown. The date and legends are complete and strong. LDS, Breen state V. Ex 1997 EAC Sale, lot 100.



134. 1794 S-25 R3 F15. Sharpness EF45 but the obverse is covered with fine granularity. The reverse is also uniformly granular, but the roughness is stronger on that side. No verdigris or marks. Recolored dark steel with reddish olive toning on the lower right part of the obverse. Great detail, but



135. 1794 S-25 R3 VG10. Sharpness F12 or slightly better with dull contact marks in the dentils under the 179 and at the opposing dentils over TES. A small nick between the 9 & 4 in the date and a couple fine hairline scratches near the eye are the other notable defects. Glossy steel brown and chocolate. The date and legends are complete and strong. E-MDS, Breen state II. Ex Gordon Wrubel 7/77-John D. Wright.



136. 1794 S-26 R2 G5. Slightly glossy medium brown with reddish chocolate in protected areas. The surfaces are decent but not perfectly smooth. No verdigris or significant marks. The date is complete and easily readable, as are the legends except for parts of ONE CENT, which are gone due to die swelling. LDS, Breen state VII. Ex Tom Reynolds 4/01-John Pijewski.

137. 1794 S-27 R5 Fair-2. Slightly sharper, especially on the obverse, but there are some rim dents and other dull contact marks. Recolored glossy dark steel brown and chocolate. No roughness or verdigris. The date is clear, the 94 strong in fact, as is nearly all of LIBERTY, but the left side of the reverse is worn smooth.



138. 1794 S-38 R5 F12. Rotated Reverse. A couple points sharper with a few patches of very shallow corrosion, including one at LI, another right of the E in ONE, and a third at ED-ST. The two rough areas on the reverse contain extremely shallow greenish verdigris. The only contact marks are a light rim bruise at LI in LIBERTY and a shallow planchet chip on the rim at the bust tip. Glossy medium brown and reddish chocolate. The date is clear and the legends are strong. EDS, Breen state II, with strong die chips in the field under the cap. The reverse is rotated 50 degrees CW. Ex Superior 9/5/2004:174.



139. 1794 S-38 R5 AG3. Rather glossy medium brown and chocolate. Both sides show numerous nicks and the obverse also has fine hairline scratches. The strike is uneven, weak at the bottom of the obverse and top of the reverse (probably caused by dies not in parallel alignment). The result is a sharpness grade considerably better than AG3 in the well struck areas and clearly less in the poorly impressed places. The date is mostly gone due in part to the uneven strike, only the tops of the numerals visible, and the upper third of the reverse is nearly slick. Ex Superior 2/2000:1580.

RARE 1794 S-39



140. 1794 S-39 R6 VG7. Sharpness VF20 or slightly better but covered with uniform fine granularity. No verdigris. Only a few minor marks, including a very light rim bruise right of the bust tip, a pair of rim nicks under the right side of the fraction, and a faint old diagonal scratch hidden in the roughness under ENT. Slightly glossy reddish chocolate with lighter steel brown highpoints. There are traces of glue or some similar substance on the highpoints at the bottom of the reverse. EDS, Breen state I. Called VF25 net VG7 and tied for CC#11 in the Bland census. Removed from an NCS slab graded VF details damaged (NCS label included, and it shows the attribution and Reiver provenance). Ex George Ramont 4/13/71-Jules Reiver. Heritage 1/24/06:19200.

141. 1794 S-40 R5+ G4. Sharpness VG10 but there are three dull, deep dents on the portrait, another at the rim over the bust tip, plus one on the reverse under the E in CENT. The planchet is covered with very fine roughness under a somewhat glossy reddish steel brown and chocolate patina. No verdigris. The date is weak but readable and the legends are complete ranging from weak to bold. MDS with the usual heavy swelling in the center of the reverse that obliterates much of ONE CENT.



142. 1794 S-41 R3 VG10. Sharpness VF25 but covered with fine roughness with traces of very light verdigris dusted into the protected areas on both sides. The only marks are a rim nick right of the base of the pole and another over the E in LIBERTY, neither distracting. Rather glossy reddish chocolate mixed with darker olive brown. MDS, Breen state VI. The date and legends are complete and clear.



143. 1794 S-42 R4 F12 (SEGS slabbed EF45 with Micro Corrosion). Sharpness near VF30 but covered with microscopic granularity. No verdigris, but the obverse is covered with myriad fine hairline scratches, added no doubt in an attempt to minimize the fine roughness. The only other defects are a couple minor rim nicks on the left side of the obverse and another at the D in UNITED. The date is not strong but it is complete and easily readable. The legends are complete and clear. Dark steel brown with steel brown and chocolate highpoints. The attribution is noted on the SEGS label.



144. 1794 S-43 R2 VF35 (NGC slabbed as AU55BN). Very attractive glossy medium brown and chocolate. No roughness or verdigris, only light contact marks. The notable ones are tiny rim bruises under the 17, over ER in LIBERTY, and at ME in AMERICA, plus some nicks at RICA and the denominator. Nicely struck E-MDS, Breen state II. Great eye appeal in spite of the light contact marks. The attribution and Reiver provenance are noted on the NGC label. Ex Willard C. Blaisdell 2/8/71-Jules Reiver, Heritage 1/24/06:19205.



145. 1794 S-50 R5 VG7. Sharpness EF40 but moderately rough with traces of shallow reddish chocolate brown and olive verdigris in protected areas of the obverse. The roughness is offset a bit by a glossy reddish chocolate and olive brown patina, the highpoints a lighter shade of steel brown. There is a light scrape across the date weakening those digits, but it is still readable. The legends are complete and clear except for weakness at OF. EDS, Breen state I. Ex Lou Riggs MBS #33, 2/55:431-Lou Riggs MBS #35, 6/55:31-E. H. Schwartz, Abe Kosoff 10/61:56-An Eastern Collection-Superior 2/76:1374-Tom Morley, 1979 EAC Sale, lot 5-R. S. Brown, Jr., Superior 1/27/96:72.



146. 1794 S-51 R5- G5. The obverse is a bit better while the reverse is weaker. Very slightly glossy dark steel and chocolate brown. The surfaces are decent for the grade but do show microscopic porosity. A couple vertical hairline scratches in the field before the face, another under the cap, and a small chip at the top of the wreath ribbon are the notable marks. The date and LIBERTY are clear and the obverse has complete rims. The reverse, however, is worn into the legend outside the wreath and STATES OF AMERICA is nearly gone. EDS.



147. 1794 S-51 R5- G4. The obverse is slightly better and the reverse weaker. No corrosion or verdigris and just a few minor marks, including a dull pinprick in the field under the chin and a light rim bruise at the L in LIBERTY. Glossy dark olive brown with medium chocolate brown highpoints, the two-tone appearance accenting the details and enhancing the eye appeal. The date is complete and clear, as is LIBERTY. The reverse legend is starting to wear into the rims, especially at AMERICA, but most of the legend is readable. Ex Waller Reed.



148. 1794 S-58 R3 VG8+. Sharpness F12 with very fine roughness under a slightly glossy dark chocolate and olive patina. The notable marks are two rim bruises at TY and a dull nick under ES in STATES. The date is strong and the legends are complete and easily readable. Late die state, Breen III late, with a raised retained cud break at UNIT. Removed from a PCGS slab graded F12 (PCGS label included).



150. 1794 S-62 R4+ VG10+. Sharpness F15 with uniform very fine granularity in the fields and protected areas, and this microscopic roughness is mostly hidden under a glossy medium brown and chocolate patina. No verdigris or marks. Decent eye appeal for the grade. Rare EDS, Breen state I, without the usual cud break on the left side of the obverse.



151. 1794 S-62 R4+ G5. Sharpness F12 but corroded, strongest around the date. Glossy dark olive and steel with traces of glossy greenish olive verdigris in protected areas of the reverse. A rim nick just left of the date and a scrape across MER are the only signs of contact. The date and legends are easily readable in spite of some distortion caused by the corrosion. LDS, Breen state II, with a large cud break on the left edge of the obverse. Ex Dave Palmer-Walter Reed.



152. 1794 S-63 R2 G6. Sharpness F15 but covered with fine to moderate granularity. No verdigris, but there are a few light contact marks. These include a scuff on the cheek, a sharp rim nick at the B in LIBERTY, a pair of fine pinscratches across the reverse, and a dull rim nick at the C in AMERICA. Lightly cleaned leaving coppery tan highpoints with dark olive toning everywhere else. The date is not strong but is easily readable, and the legends are complete. Removed from a SEGS slab graded VF30 corroded (SEGS label included, and it shows the attribution).

153. 1794 S-67 R3 VG10. A couple points sharper but there are two specks of shallow verdigris in the field under the chin, a thin planchet crease hidden in the hairline at the back of the neck, and a shallow planchet void under the N in ONE. Otherwise the surfaces are choice and the eye appeal is excellent. Glossy dark chocolate brown. The date and legends are complete and strong. LDS, Breen state V.

149. 1794 S-61 R4 F15. Sharpness VF30 but covered with uniform extremely fine granularity and there are three short, dull scratches on the reverse. The scratches are at the C in CENT, I in AMERICA, and at the right side of the fraction. No significant verdigris. Slightly glossy dark olive brown with chocolate brown toning covering the highpoints. Nicely struck M-LDS, Breen state III. Decent eye appeal in spite of the defects. Removed from an ANACS slab graded EF details, scratched (ANACS label included, and it shows the attribution).

**FINEST KNOWN 1794 NC-II
ONE OF ONLY FOUR KNOWN**



154. 1794 NC-II R7+ VG7+. The obverse is a point or two sharper but shows a few minor marks or planchet chips, and the field before the portrait was lightly smoothed. The reverse is sharper, perhaps VG10 or a bit better, and is free of any significant marks other than a small pinprick or planchet chip just right of the numerator and a very light rim bruise at D-S. Glossy steel brown and chocolate with a couple splashes of darker olive and steel brown toning on the obverse. The date is strong and the legends are complete and easily readable. Called F12 net VG7 and finest known in the Noyes census, his photo #59085. Only 4 of this variety are known, and the other 3 have significant defects. A very important opportunity for all of us, but especially for the "Boys of '94."

155. Trio of Early Cents, 1794 & 1798. Includes one 1794 and two 1798's. The 1794 date is weak but readable while the two 1798 dates are easily readable. All grade Fair-2 and are scudzy. Lot of 3 coins.



156. 1795 S-76b R1 VG10. Clipped Planchet. Sharper by at least 5 points but there are a half dozen old pin scratches in the field below the cap, a dull dig under ER in LIBERTY, and shallow verdigris scattered about the reverse. The surfaces are very lightly corroded, mostly on the reverse. Slightly glossy greenish olive and chocolate brown with lighter steel brown highpoints. The date is bold and the legends are clear. EDS. A curved planchet clip affects the dentils over RTY and ICA. Ex Superior 1/25/04:1221.



157. 1795 S-76b R1 VG8. Slightly sharper but there is a nick just right of the 5 in the date, a pair of pinprick marks in the field under the cap, and a few tiny rim nicks under the date and bust tip. Attractive glossy medium brown. EDS. Breen state III. The date is strong and the legends are complete. Ex John M. Ward, Jr., Superior 9/5/04:225-John Pijewski.



158. 1795 S-76b R1 G6. Sharpness F12 or slightly better but pitted on the obverse while the reverse is smoother but still shows fine granularity. Traces of greenish verdigris rest in protected areas on both sides and there are some old, light scratches in the left obverse field that blend perfectly into the slightly glossy reddish chocolate patina. The date and legends are complete and strong. EDS.

159. 1795 S-76b R1 VG7. Flipover Double Strike. Glossy steel brown and chocolate with a swipe of chocolate toning at LIB and left of the cap. Smooth and attractive, free of any notable defects. Double struck. The first strike was slightly off center. The cent was then reinserted into the press (flipped over) and struck properly the second time. Strong undertype from the initial impression shows on the right half of both sides, including the 5 from the date clearly evident under the O in OF. A dramatic early mint error.

160. 1795 S-78 R1 VG8 (ICG slabbed as F15). Off Center. A couple points sharper with faint roughness in the obverse fields, but this roughness is mostly hidden by the glossy chocolate brown patina. The toning varies from dark chocolate in protected areas to light chocolate on the highpoints. No notable marks or verdigris. The date is bold and the legends are clear except for weakness at AMER. MDS. Struck 5% off center to K-4. The attribution and off-center feature are noted on the ICG label.



161. 1795 S-80 Cast copy of the Jefferson Head Cent AU50 copy of an EF40 coin. Frosty reddish chocolate brown with steel highpoints where the underlying base metal is showing through the copper coating. No defects other than the ones present on the original, including the dull scrape in the leaves at D-S. The model for this copy was the ANS coin, which is also the Breen plate coin and *Penny Whimsy* plate coin for the variety. Acquired by Jules Reiver as a gift from Stack's 1/29/93.

162. 1795 S-80 Electrotpe copy of the Jefferson Head Cent VF25. Sharper but there is some minor roughness scattered over both sides. Slightly glossy chocolate and darker olive brown with areas of steel toning from exposed base metal. A decent though imperfect copy of the EF40 ANS coin that is plated in the Breen and Sheldon books.



163. 1796 S-81 R3- F12. Liberty Cap. Oversize Planchet. Sharpness VF30 but covered with uniform fine granularity. There are a couple small spots of waxy verdigris on both sides and a light scratch in the field left of the lower curls. Somewhat glossy dark olive and steel. Sharply struck on a planchet with a diameter of 30.5 millimeters. ONE CENT is strong, which is unusual for the variety.



164. 1796 S-81 R3- VG8. Liberty cap. The obverse is a bit better and the reverse very slightly weaker, especially in the center where ONE CENT is incomplete, as usual on this variety. No roughness or verdigris and only a few minor marks, including a tiny rim bruise under the 1 in the date and another equally insignificant one at NI in UNITED. Rather glossy chocolate and steel brown. The date is bold and the legends are complete except for the aforementioned weakness at ONE CENT. EDS. Breen state 1. Removed from a new ANACS slab graded VG10 (ANACS label included, and it shows the attribution).



165. 1796 S-83 R4 G5. Flipover Double Strike. Liberty Cap. Glossy very dark olive and steel with chocolate toning on the highpoints, the contrast helping bring out the details. The surfaces are decent but not perfectly smooth with microscopic roughness under the glossy patina. No verdigris or marks. Double struck. The first strike was slightly off center to K-11. The planchet was then reinserted into the press (flipped over) and struck normally. Much clear under-type is visible on both sides, including a complete 1796 date on the reverse where RICA would normally be located. A dramatic mint error with 2 full dates. Removed from an ANACS slab graded G6 (ANACS label included, notes the attribution and flipover double strike feature).



166. 1796 S-84 R3 G4+. Liberty Cap. Very slightly sharper but both sides are covered with light, old scratches hidden under the glossy, thick dark chocolate brown patina. No verdigris, and the only other mark is a light rim bruise over the O in OF. The date is clear, although the bottom of the 6 is fading into the rim thanks to swelling in that area. The reverse legend is readable as well except for ED in UNITED, which is obliterated by swelling from the late die state.



167. 1796 S-85 R5- VG10. Liberty Cap. Sharpness VF20 with an old scrape on the rim at the left side of the obverse and very fine roughness in the field left of the bottom of the cap. A planchet chip on the bust tip and some small contact marks at the lips and top of the cap are the other notable defects. Glossy dark steel brown and chocolate. Nicely struck EDS. Breen state I. The date and legends are strong, including all of ONE CENT. Noyes photo #37517. Ex Tom Reynolds FPL 1996-Jack Wadlington.



168. 1796 S-86 R5 VG7 (ANACS slabbed as VG8 damaged). The obverse is sharper, perhaps VG10, while the reverse is weaker in areas thanks to uneven wear that makes UNITED only partially visible. The surfaces are decent but a few small pitmarks are scattered about the obverse, including one on the throat and another over the T in LIBERTY. A few light contact marks in the field before the mouth and a rim dent at AT in STATES round out the notable defects. MDS. The date and LIBERTY are strong.



169. 1796 S-97 R3 VF20. Draped Bust. Sharpness EF40 but the obverse is covered with uniform extremely faint granularity while the reverse is covered with slightly stronger granularity. No verdigris or contact marks, but there is an area of shallow erosion at the T in LIBERTY. Frosty light olive and steel brown with reddish chocolate in protected areas, mostly on the reverse. The date and legends are complete and bold. MDS. Breen state IV. The obverse is slightly misaligned to K-8. Decent eye appeal in spite of the minor roughness.



170. 1796 S-102 R4 G5+. Draped Bust. A point sharper but there is a dull and rather strong rim nick off the bust tip, another before the throat, and several tiny contact marks in the field before the portrait. Otherwise the surfaces are smooth and quite nice for the grade. No corrosion or verdigris. Glossy dark steel and olive brown. The date and legends are easily readable. EDS. Breen state I. Very close to G6, and it comes with a Bland grading card calling it just that. Ex Chuck Furjanje 7/26/75-Daniel W. Holmes, Jr.



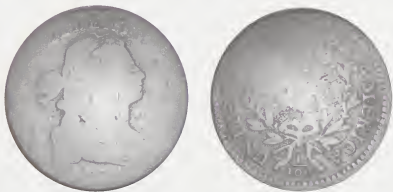
171. 1796 S-104 R3 G5. Draped Bust. LIBERTY Obverse. Very slightly sharper but there are rim bruises at UN and ST, a half dozen sharp rim nicks on the reverse, and a shallow planchet chip at the ear. Glossy chocolate brown with medium brown toning on the highpoints. The date and legends are complete and clear, and the LIBERTY feature is obvious. EDS. Breen state I.



172. 1796 S-104 R3 G4. **Draped Bust, LIBERTY Obverse.** A couple points sharper but there is a dull dent at the bottom of the hair ribbon and a few rim nicks and light rim bruises scattered about both sides. Glossy dark steel brown and chocolate. The date and legends are complete and clear, and the LIBERTY feature is bold. M-LDS, Breen state III.



175. 1796 S-115 R3 VG7+ (PCGS slabbed as G6). **Draped Bust.** The obverse is very close to VG7 but the reverse is considerably better, perhaps VG10. Slightly glossy steel brown and chocolate. The only notable defects are some light contact marks in the obverse fields and a small patch of microscopic granularity at the leaf tips under the first A in AMERICA. The date is clear, although the bottom of the 17 is weak, and the legends are strong. EDS, Breen state II.



173. 1796 S-107 R5 Fair-2+. **Draped Bust.** Glossy dark steel brown and chocolate. No roughness or significant defects, just well worn. The notable marks are some fine vertical hairline scratches in the hair on the head and a chip in the hair left of the neck. The upper half of the date is visible but lower half is gone. STATES is gone as well, but nearly everything else is easily readable. EDS, Breen state I.



176. 1796 S-116 R5- G5. **Draped Bust.** Slightly glossy dark chocolate and steel brown. The surfaces are decent but do show extremely fine granularity in the fields and protected areas. No verdigris, and the only mark is a dull nick under the N in ONE. The date is nearly full, only the bottom edge starting to fade into the rim below. The legends are easily readable as well. EDS, Breen state I. Ex Tom Reynolds 9/95-Walter Reed.



174. 1796 S-113 R5 G6 (NGC slabbed as VG8). **Draped Bust.** Slightly sharper with rim bruises under the bust tip, before the forehead, and right of the F in OF. Otherwise the surfaces are excellent for the grade. Glossy chocolate and olive brown. The date and legends are clear except for weakness at LIBERTY. M-LDS, Breen state IV, with a slightly raised retained cud break that weakens the lower half of the 17 in the date. Ex W. E. Johnson 4/21/70-Jules Reiver, Heritage 1/24/06:19299. The attribution and Reiver provenance are noted on the NGC label.



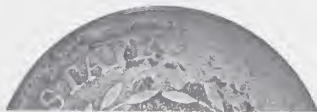
177. 1796 S-118 R5+ Fair-2. **Draped Bust.** Lightly cleaned and retoned glossy chocolate and steel brown with light olive overtones on the reverse. No roughness or verdigris. A dull dent or strong nick at the top of RT in LIBERTY and another on the right end of the wreath ribbon are the only significant marks. Basically just a very well worn cent. The date is complete and easily readable and about half the legends remain visible.



178. 1796 S-119 R3 VG7. Draped Bust. Rather glossy steel brown with chocolate toning covering the protected areas. A small chip in the field over the hair ribbon and another under the Y are the only notable marks, and they are not at all significant. MDS, Breen state II. The date is strong and the legends are complete. A non-Nichols Hoard example of a Hoard variety. Ex Seacoast Coins 3/70-John D. Wright, 2003 EAC Sale, lot 350-John Pjowski.



179. 1796 S-119 R3 G4. Draped Bust. Several points sharper but covered with uniform fine granularity. No verdigris, and the only mark is a dull rim nick at the F in OF. Matte dark steel. The date and legends are complete and clear. Late die state. Breen III. I'll go out on a limb here again and suggest this one is not from the Nichols Hoard.



180. 1796 NC-4 R5+ G4. Draped Bust. A bit sharper with very fine porosity covering much of both sides, strongest at the 179 in the date where it weakens those digits. No verdigris or contact marks. The date is still readable and the legends are nearly complete, only the OF missing with a few other letters weak. Slightly glossy dark chocolate and steel brown. Extremely rare LDS, Breen state II late, with a sunken retained cud over TES. Ex Clay Everhart.

181. 1797 S-121b R3- VF25. Reverse of 1796 with Gripped Edge. Five points sharper with faint traces of very fine roughness in protected areas of the reverse. The only marks are a dull, light scratch slanting through the top of the E in CENT to the leaf over that C and a light rim slub under the right ribbon end. Glossy chocolate and olive brown with hints of reddish chocolate toning in protected areas of the reverse. The obverse is quite attractive for the grade, free of any notable defects. Late die state, Breen V. Called VF25 in the Bland census. CC#8 in the Noyes census, his photo #26838. Removed from an NGC slab graded AU50 (as offered in the Rasmussen sale). Ex K. P. Austin-George Ramont 5/18/93-R. S. Brown, Jr., Superior 1/27/96:172-Wes Rasmussen, Heritage 1/13/05:3141-Daniel W. Holmes, Jr.



182. 1797 S-121b R3- F15. Reverse of 1796 with Grippd Edge. Five points sharper but there is a dull nick on the shoulder, a fine hairline scratch across CENT, and some more fine scratches from the F in OF into the leaves under the adjacent AM. The surfaces are smooth except for specks of verdigris at BER and a splash of very fine roughness at ITE in UNITED. Glossy chocolate brown with specks of darker olive toning on the obverse and darker reddish chocolate mixed in on the reverse. M-LDS. Breen state IV.



185. 1797 S-123 R4 F15. Sharpness near EF40 but lightly corroded, strongest on the obverse. Some very fine verdigris is dusted into the protected areas, but a glass is required to find any of it. The only contact marks are a small rim nick at the L in LIBERTY and a couple more on the reverse. Slightly glossy dark olive brown with traces of reddish chocolate in protected areas of the obverse. MDS.

1797 S-122

EX NEWCOMB-SHELDON-DOWNING-SMITH



183. 1797 S-122 R5+ VG8+. Sharpness VF20 but dark with fine roughness under a mostly glossy dark chocolate brown and olive patina. The highpoints are a lighter shade of chocolate. No verdigris. The only marks are a light rim bruise over the R in LIBERTY and a thin nick or planchet chip left of the eye. The date and legends are complete and clear. EDS, Breen state I, without any die cracks on the reverse. Called VF20 net VG8 and tied for CC#7 overall in the Bland census, but finest known of the early die state. Noyes says F15 net VG8 and CC#8 overall, his photo #23026. The impressive provenance for this cent includes Howard R. Newcomb, J. C. Morgenthau & Co., 2/45:140-Dr. William H. Sheldon-Homer K. Downing, 1952 ANA Sale (New Netherlands Coin Co.), lot 1763-Dr. Charles L. Ruby, Superior 2/74:464-William R. T. Smith 8/14/74-C. Douglas Smith (his typed envelope is included) 3/30/92-Eric Streiner, Superior 10/11/92:79-Jack Robinson.



184. 1797 S-122 R5+ Fair-2. Sharpness G6 but the rim over LIBERTY was filed away (or cut off with shears). The tops of BER are gone but everything else is complete and easily readable. Rather glossy chocolate with darker olive brown in protected areas. The surfaces show minor roughness but no verdigris. EDS, Breen state I. Ex Ronnie Adam, Superior 9/5/04:293-John Pjiewski.

186. 1797 S-124 R5+ F12. Sharpness VF30 but covered with fine granularity under a dark greenish olive brown patina with steel brown highpoints. No raised corrosion or notable signs of verdigris. The only marks are a very dull, shallow scratch in the field off the tip of the nose and a longer one in the field up from the bust tip. MDS, Breen state IV. Swelling at the bust tip and date weakens the 97 in the date, but everything remains easily readable and the legends are strong. Removed from an NCS slab graded VF details corroded (NCS label included, and it shows the attribution and Reiver provenance). Ex Penn Valley 12/1/66-Jules Reiver, Heritage 1/24/06:19319.



187. 1797 S-125 R5 VG10. Sharpness VF20 or slightly better but covered with very fine porosity that's mostly gone thanks to a light burnishing. The only area of roughness visible to the unaided eye is at F-AMER, strongest at the dentils over ER. Nicely retoned glossy chocolate brown. The date and legends are complete and bold. Decent eye appeal in spite of the surface issues. MDS. Breen state II, with obvious swelling at the bust tip and in the fields on either side of the portrait.



188. 1797 S-125 R5 G5. The obverse is a bit weaker, the reverse stronger. Both sides are covered with light roughness, and there are traces of waxy dark greenish verdigris in protected areas on the lower half of the reverse. The date is weak due to swelling in that area, but it remains readable. The legends are complete. Slightly glossy dark steel brown with darker olive and steel toning in protected areas. MDS. Breen state II. Ex Central States bourse 4/81-John D. Wright.



189. 1797 S-132 R5+ AG3. Stemless Wreath. Very slightly sharper with a vertical scratch in the left obverse field and microscopic roughness covering both sides. The upper half of the obverse is well struck and considerably sharper than the lower part, where only the upper third of the date remains visible. The reverse is evenly struck and everything on that side remains clear although not strong. The stemless wreath feature is obvious. Comes with a Del Bland grading card as AG3. Ex Joe Tomasko-Ed Kucia 9/3/88-Daniel W. Holmes, Jr.

190. 1797 S-132 R5+ F15. Stemless Wreath. Sharpness near VF25 but lightly cleaned and retoned glossy medium brown and chocolate. The toning at the date is a slightly lighter shade of brown with sea-green overtones. The planchet is smooth except for an area of extremely fine roughness near the dentils behind the head. There is a barely visible planchet lamination hidden in the hair at the forelock and a thin vertical nick in the field close off the chin. Late die state. Breen state II, with dentil fusing at IC in AMERICA. Called VF25 net F15 and CC#4 in the Noyes census, his photo #22194. Bland also says F15 but tied for CC#6 in his census. Either way this is an important early cent. Ex Dan Murphy 9/70-John D. Wright.



191. 1797 S-133 R5 VG8. Stemless Wreath. Sharpness VF30 but lightly corroded, strongest on the reverse where specks of verdigris remain in a few of the protected areas. No contact marks other than an old, light scrape across the upper half of the date and a light scratch across the throat. Medium brown and chocolate with darker olive and reddish chocolate dominating the reverse. The details are sharp except for weakness at STA and the F in OF. EDS. Breen state I.



194. 1797 S-134 R4 VG10. Sharpness VF20 (at least on the obverse, which is always sharper than the reverse on this variety) but the surfaces are very slightly rough and there are some pitmarks on both sides, mostly on the reverse. The obverse pitmarks are located near the dentils off the chin, and the reverse shows pits around AMERICA and on the rim over NI in UNITED. Traces of greenish verdigris are resting in some of the pits. Glossy dark steel brown and chocolate with hints of reddish chocolate in a few protected areas. The date and legends are complete and strong. MDS. Breen state III.



192. 1797 S-133 R5 VG7. Stemless Wreath. Partially Reeded Edge. Sharpness F12 but covered with fine to moderate granularity. No notable signs of verdigris, and the only marks are some dull rim nicks, strongest over AT in STATES. The date and legends are complete and easy to read, and the stemless wreath feature is clear. Slightly glossy dark steel brown and olive. MDS. The edge shows diagonal reeding at the bottom of the obverse (from the bust tip to below the lowest curl), and the reeding is clear.



195. 1797 S-135 R3 F15. Ten points sharper on the obverse, perhaps 15 points sharper on the reverse, but there are at least a half dozen fine pinscratches on the obverse plus a few more on the highpoints of the reverse. The right obverse field is lightly smoothed and the reverse is covered with uniform fine granularity. Retoned olive brown and dark chocolate, the obverse rather glossy and the reverse closer to matte. Looks better than it might sound, but this cent is far from perfect. MDS. Breen state III.



196. 1797 S-141 R4 AG3. Sharpness VG7 but lightly corroded with uneven surfaces. Rather cruddy but there is no notable verdigris. Some rim bruises on both sides, the strongest one at LI in LIBERTY. Glossy dark chocolate and olive brown. The date is weak but complete and easy to read. The legends are complete except for UNITED, which is faint.

193. 1797 S-134 R4 F15+. Sharpness VF35 with several rim bruises on both sides, the strongest ones at the bust tip and at the F in OF. In addition, there are a half dozen fine pinscratches on the reverse, mostly from the T in CENT down to the rim left of the fraction. The obverse fields are covered with extremely fine roughness but there is no verdigris and the roughness is hidden under a glossy chocolate and steel patina. MDS. Breen state III. Ex Fred H. Borchardt 2/99-Walter Reed.



197. 1797 S-142 R5+ VG10. Sharpness VF25 but uniformly granular. No verdigris, and the only marks are a very tiny rim bruise under the lowest curl and another even smaller one under the bust tip. Slightly glossy very dark steel brown and reddish chocolate. The date and legends are complete and clear. Called VF25 net VG10 and tied for CC#9 in the Bland census. Noyes says VF20 net G6 and tied for CC#14, his photo #34417. Ex 1995 EAC Sale, lot 201-Stuart MacDonald, Heritage 9/11/97:5121-Jack Wadlington.



199. 1797 S-143 R5 AG3+. Stemless Wreath. A couple points sharper where properly struck, but the left sides were softly impressed leaving many of those details missing. The date is complete except for the 1. Rather glossy chocolate brown with steel brown highpoints. Ex Carvin Goodridge-Rod Burress 8/1/01-John Pijewski.



200. 1797 NC-3 R6- G5. Sharpness VF25 but covered with moderate corrosion. Very shallow greenish verdigris is lightly dusted into protected areas, but there are no marks or other defects. Slightly glossy dark chocolate and olive. Sharply struck EDS. Breen state I. Great detail but scudzy. Ex Walter Reed.



198. 1797 S-143 R5 G4. Stemless Wreath. Very slightly sharper but there are too many light contact marks for a higher grade, none notable or distracting. The surfaces are decent but not perfectly smooth. No verdigris. Slightly glossy medium steel brown with chocolate in protected areas. The date is clear and the legends are complete, although a few letters are weak. The stemless wreath feature is clear but not strong.



201. 1798 S-148 R2 VF25. Style I Hair with Large 8. Sharpness AU50 but the obverse is covered with microscopic contact marks that roughen the raised areas and myriad fine hairline scratches that do not alter the natural toning. Rather frosty steel brown and chocolate with hints of lustrous tan faded down from mint color in a couple of the protected areas. There is a small patch of shallow corrosion at the dentils over ER in LIBERTY and microscopic traces of reddish verdigris on the upper left part of the R in AMERICA. Sharply struck E-MDS. Breen state II.



202. 1798 S-148 R2 F12+. Style I Hair with Large 8. A few points sharper but lightly cleaned and nicely retoned glossy medium brown delicately mottled with olive. The surfaces are smooth, free of any trace of corrosion or verdigris. The notable marks are a pinprick at the right top of the Y, a light rim bruise right of that letter, and another barely visible rim bruise under the bust tip. MDS, Breen state IV.



205. 1798/7 S-150 R5 G4. Close Overdate 8 over 7. A point sharper with microscopic roughness covering the fields and protected areas, and there is a dull scrape of fine scratches from the D in UNITED into the upper part of the wreath. No verdigris. Lightly cleaned and retoned dark steel and olive with chocolate brown highpoints. The date and overdate are bold and the legends are clear except where weakened by die swelling associated with the late die state.



203. 1798 S-149 R4+ G6. Style I Hair with Large 8. Sharpness F12 but covered with fine roughness. No verdigris or significant marks other than some dull dents in the dentils at ERICA. Mostly glossy dark chocolate brown with lighter chocolate highpoints. The date and legends are complete and clear except for weakness at ONE CENT. Ex Lillian Willins 4/92 (via Bill Noyes)-Wes Rasmussen, Heritage 1/13/05:3175.



206. 1798/7 S-151 R3+ VG10. Close Overdate 8 over 7. Sharpness near VF20 with minor roughness on the obverse, mostly in the field behind the portrait. No verdigris, and a couple rim bruises off the chin and another at ER in AMERICA are the only notable signs of contact. Nicely recolored glossy dark steel brown and chocolate. M-LDS, Breen state VI. The reverse is finely but clearly doubled. The date and overdate are bold and the legends are very strong. Ex Walter Reed.



204. 1798/7 S-150 R5 G5. Close Overdate 8 over 7. A point sharper but covered with light roughness. There are a few tiny specks of greenish verdigris, mostly on the reverse, but no significant marks. Slightly glossy dark olive with lighter steel brown highpoints. The date is strong and the overdate is obvious. The legends are complete except for places affected by die swelling on the reverse. LDS, Breen state IV. Ex Superior 2/18/02:1205-John Pijewski.



207. 1798/7 S-151 R3+ VG10. Close Overdate 8 over 7. Glossy chocolate and steel brown. Smooth surfaces, free of any corrosion or verdigris. A few minor marks consistent with the grade, including a faint scuff on the top of the N in CENT and a tiny planchet chip on the rim over the second T in STATES. Late die state, Breen VIII. The reverse die cracks are clear. Nice for the grade. The overdate is bold.



208. 1798/7 S-151 R3+ VG10. Close Overdate 8 over 7. Sharpness near VF30 but there are numerous scratches on the lower half of the portrait and in the field over the bust. The surfaces are mostly smooth but do show microscopic specks of dark crud or verdigris sprinkled in the protected areas. A small punchmark at the left foot of the F in OF is the only other significant mark. Recolored a mostly glossy dark chocolate brown and olive with some lighter chocolate toning on the highpoints. E-MDS. Breen state II. The date is bold and the overdate is obvious. Looks better than it might sound. Noyes photo #39548. Ex Dr. C. A. Allenburger. B. Max Mehl 3/48-433.



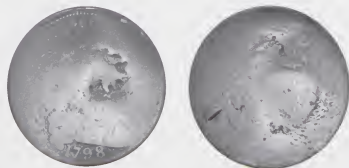
211. 1798 S-158 R4 VG10. Style I Hair with Small 8. Sharpness near VF30 but there are strong rim dents at LIB and the bust tip, and these dents have been crudely smoothed down a bit to minimize their impact (with little if any success). These rim dents also affect the reverse at F-A and UNIT. Otherwise the surfaces are smooth and quite attractive. Glossy olive brown with lighter brown highpoints. MDS. Breen state IV. Ex Walter Reed.



209. 1798 S-155 R3 G5+. Style I Hair with Small 8. Reverse of 1796. Close to G6 but there is a fine scratch from the hair ribbon to the bust tip. Otherwise the surfaces are smooth, just a couple light rim bruises from choice for the grade. Glossy chocolate and olive brown. The date is bold and the legends are complete except for weakness at OF due to die swelling. LDS. Breen state VI.



212. 1798 S-159 R3 F15. Style I Hair with Small 8. Sharpness near VF20 but there are a few too many light contact marks for a higher grade. The notable marks are a rim nick well left of the L in LIBERTY and a few more small ones over IBERT. Glossy chocolate and medium brown with a few delicate spots of darker olive toning on the obverse. Supposedly recolored long ago, but the toning appears quite natural today. M-LDS. Breen state V. Ex Jack Robinson, Superior 1/29/89-318-Tom Reynolds 1996-Jack Wadlington.



210. 1798 S-156 R5+ Basal State-I. Style I Hair with Small 8. Reverse of 1796. Glossy chocolate brown with darker olive toning around the date. Dented around the face and a sharp poke extends well into the planchet at K-8 on the reverse. No corrosion or verdigris. The date is complete and strong, most of LIBERTY remains visible, and the upper part of the wreath shows the single leaf feature of the 1796 reverse type. Banged up a bit but overall not bad for the grade given the strong date and visible single leaf feature.





213. 1798 S-160 R3 F12. Style I Hair with Small 8. Sharpness VF20 but there is a small patch of shallow pitmarks in the field left of the lower curls, the rim was shaved at ED nearly to the adjacent S, and there is a scrape of light contact marks at the dentils over ERI in AMERICA. Slightly glossy dark olive brown with light steel brown toning covering the devices, the two-tone contrast accenting the details and adding to the eye appeal. The date and legends are complete and bold. MDS. Breen state III. Ex Denis Loring 5/71-John D. Wright.

214. 1798 S-160 R3 AG3. Style I Hair with Small 8. Sharpness at least VF20 but corroded with dull granular surfaces showing a few clumps of raised metal on both sides, the largest of these resting on the chin. No verdigris or contact marks, but scudzy nonetheless. The date and legends are bold. Steel brown and chocolate with splashes of dark steel. Ex John Pijewski.



215. 1798 S-161 R2- VF25. Style I Hair with Small 8. Sharpness slightly better, especially on the reverse, but there are some faint hairlines on the reverse, mostly on the upper right portion. The only other notable marks are some very light but fresh marks in the field under the lowest curl. This piece is very attractive. E-MDS.



216. 1798 S-162 R2- VG7. Style I Hair with Small 8. Off Center. Sharpness VF20 or better but uniformly granular. No verdigris or marks. Dark olive and steel. M-LDS with a strong cud break over ATE with a slightly raised retained cud over TA. Struck 10% off center to K-4.5. Excellent detail but rather unattractive due to the roughness and dark color.

217. 1798 S-162 R4 VF20. Style I Hair with Small 8. Attractive glossy chocolate brown with dark chocolate toning in protected areas. Possibly lightly cleaned and retoned long ago, but the eye appeal is excellent. Smooth and virtually free of marks, a tiny pinprick on the throat the best identifying mark. MDS. Breen state II. At the lower end of the condition census. Ex Trademark Coins 7/14/96-Colonel Steven Ellsworth collection.



218. 1798 S-162 R4 F12. Style I Hair with Small 8. Sharpness F15 or slightly better but there are some thin nicks in the field over the bust tip, another on the eyebrow, and light verdigris dusted into protected areas of the reverse. Rather glossy dark steel brown and chocolate with reddish chocolate in protected areas. M-LDS, Breen state II late. Die swelling shows clearly in the obverse fields.



220. 1798 S-163 R4 G6. Style I Hair with Small 8. A couple points sharper with very fine roughness under a rather glossy dark steel and olive patina. There is a speck of greenish verdigris under the R in LIBERTY and a shallow planchet chip on the rim over that B. The date is bold and the legends are strong. EDS, Breen state I, Ex March Wells-Rod Burress 10/18/01-John Pijewski.



221. 1798 S-163 R4 VG8. Style I Hair with Small 8. Glossy steel brown and chocolate with splashes of darker chocolate toning on both sides. Smooth, corrosion-free surfaces. The notable marks are small rim bruises at RT in LIBERTY, over TE in STATES, and at ER in AMERICA. E-MDS, Breen state II, with a very light die crack through the bottom of 179 into the field at left. The date is bold and the legends are clear.



219. 1798 S-163 R4 F15. Style I Hair with Small 8. Glossy chocolate and steel brown, the reverse a shade or two lighter than the obverse. Smooth surfaces with only a few trivial marks. Nicely struck except for the nose and eye, which are weak due to a die clog. EDS, Breen state I. Tied for CC#6. Ex Colonel Steven Ellsworth 1/04-Clay Everhart.



222. 1798 S-163 R4 VG10. Style I Hair with Small 8. Sharpness VF20 but the obverse suffers from a dozen hairline scratches. Otherwise the surfaces are smooth and the only mark is a dull nick on the rim over the E in LIBERTY. Glossy medium brown and chocolate with specks of darker olive sprinkled about the obverse. M-LDS, Breen state VI, with a slightly sunken retained cud break under the 17 and lowest curl. The date and legends are complete and bold.



223. 1798 S-164 R4 F15. Style I Hair with Small 8. Sharpness VF30 but covered with microscopic roughness and very tiny contact marks which are difficult to separate from the die rust evident on this variety. None of these marks is significant, but a thin vertical nick up from the left side of the C in CENT can serve as an identifier. Lightly cleaned and retoned a rather glossy dark chocolate and steel brown with traces of frosty lighter reddish brown in protected areas. MDS. Breen state III. Ex Fred H. Borchardt 3/6/99-Walter Reed.



226. 1798 S-167 R1 VF20. Style II Hair with Large 8. Sharpness VF35 but covered with uniform fine granularity. No verdigris or marks. Frosty dark chocolate brown, the surfaces with an attractive satiny look thanks to the microscopic roughness. Late die state, Breen VI, with a small but strong cud break connecting the first T in STATES to the rim above.



224. 1798 S-165 R4 F12. Style II Hair with Large 8. A few points sharper but covered with extremely faint roughness. No verdigris, and the only mark is a tiny planchet chip or nick on the bust just above the drapery. Dark chocolate brown with lighter steel brown highpoints. The date and legends are complete and strong. MDS. Breen state II. Ex Golden Valley Numismatics 3/7/6-John D. Wright.



227. 1798 S-169 R3 VF25. Style II Hair with Small 8. Double Profile. Sharpness VF30 or very slightly better but there is uniform extremely faint roughness well hidden under a glossy chocolate and light olive brown patina, the obverse a couple shades lighter than the reverse thanks to a very light cleaning. A speck of verdigris shows at the rim over the right side of the C in AMERICA. The only contact marks are a light nick in the field before the nose and another near the rim left of the fraction. MDS. Breen state III, with a clear double profile from the lips down to the bottom of the neck. Ex Rodney T. Grove-Tom Morley-Dr. Phil Ralls 10/84-WAR 1/13/05:3197.



225. 1798 S-165 R4 VG7+. Style II Hair with Large 8. Glossy medium brown with darker olive in protected areas. Smooth with minor nicks on both sides and a small dig over the left top of the E in ONE. The date and legends are complete and clear. Nice for the grade, close to VG8. MDS.



228. 1798 S-169 R3 F12+. Style II Hair with Small 8. Double Profile. Slightly sharper with a few fine scratches under the Y and another down from the nose to the rim at the bust tip. Smooth except for a small patch of microscopic roughness in the field at the mouth. Glossy chocolate and steel brown. MDS. A thin but clear double profile shows on the forehead and from the lips down to the bottom of the neck. Ex Walter Reed.



232. 1798 S-172 R2 AG3. Style II Hair with Small 8. Off Center. Sharpness VG10 or so but there are two moderately sized counterstamps of a sunburst or some similar design on the obverse, dull scratches here and there, and areas of moderate corrosion on both sides. Small spots of greenish verdigris round out the bad news. The good news is that the strike was nearly 50% off center to K-12. Unfortunately the date is not visible, having been where one of the counterstamps is located (making the attribution a challenge). Slightly glossy dark steel brown and chocolate.



229. 1798 S-170 R3 VF20. Style II Hair with Small 8. Rotated Reverse. Sharper by at least 5 points but there is very fine roughness under the rather glossy dark chocolate and olive brown patina. Microscopic specks of reddish verdigris are dusted around ONE CENT. Otherwise free of verdigris or marks. E-MDS. Breen state II. The reverse is rotated 30 degrees CCW. Ex Mid-American Rare Coin Auctions 9/8/90:227-March Wells, 2005 EAC Sale, lot 185.



230. 1798 S-171 R4 F15. Style II Hair with Small 8. Sharper by at least 5 points but there are very fine diagonal hairline scratches on the obverse, mostly at the face and field to the right. Otherwise the surfaces are smooth and attractive. Glossy chocolate and steel brown. MDS, Breen state III. Ex Bowers & Merena 3/21/96:215-Colonel Steven Ellsworth collection.

231. 1798 S-171 R4 G4. Style II Hair with Small 8. Rather glossy dark steel. A rim bruise under the date is the only significant defect. Late state with a cud break left of the L in LIBERTY. The date and legends are complete and easily readable.



233. 1798 S-173 R3-VF25. Style II Hair with Small 8. Rotated Reverse. Slightly sharper but recolored glossy chocolate and steel brown with traces of frosty lighter brown in protected areas. Smooth, corrosion free surfaces. The only marks of any consequence are a couple faint hairlines in the field over the hair ribbon and a thin diagonal nick, low on the neck. EDS, Breen state II, with the reverse rotated 60 degrees CCW. Called VF30 net VF25 and tied for CC#14 in the Noyes census, his photo #38135. Ex 1999 EAC Sale, lot 219-Wes Rasmussen, Heritage 1/13/05:3202.



234. 1798 S-174 R2 VF30. Style II Hair with Small 8. Slightly sharper but there is a dull dent hidden in the hair under the ribbon, plus a rim nick at the T in LIBERTY. Otherwise nice for the grade with good eye appeal. Glossy chocolate brown with frosty lighter steel brown in protected areas. M-LDS. Breen state IV.



237. 1798 S-176 R4 VG8. Style II Hair with Small 8. Sharpness VF20 but covered with fine granularity. Very fine verdigris is dusted into the fields and protected areas, but there are no significant contact marks or other defects. Slightly glossy dark olive and steel. EDS. Breen state II. The date and legends are bold.



235. 1798 S-174 R2 VF25. Style II Hair with Small 8. Glossy chocolate brown with a few small spots of darker olive brown toning on both sides. The surfaces are smooth and the only marks are a nick just above the hair ribbon, another at the leaf tips over O in ONE, and a barely visible rim bruise left of the first S in STATES. MDS. Breen state III late.



238. 1798 S-176 R4 VG10. Style II Hair with Small 8. Ten points sharper with shallow pitmarks scattered over the obverse and very light granularity in protected areas of the reverse. No verdigris, and the only contact mark is a dull rim nick at the I in LIBERTY. Rather glossy chocolate brown with lighter chocolate brown highpoints. MDS. Breen state V.



236. 1798 S-175 R3 VF20. Style II Hair with Small 8. Sharpness VF35 with fine roughness covering the left obverse field and similar roughness shows along the left edge of the reverse. The roughness is strongest at LIBE where there are a couple specks of greenish verdigris. Otherwise the surfaces are smooth and very attractive, virtually flawless. Glossy light olive brown and chocolate with reddish chocolate toning in the roughened areas. LDS. Breen state VI.



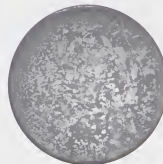
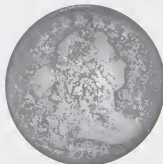
239. 1798 S-177 R4+ G6. Style II Hair with Small 8. Sharpness VF20 or slightly better but covered with moderate granularity and shallow corrosion. No marks or verdigris. The date is strong and the legends are clear except for weakness at UNITED. Dark steel brown. MDS. Breen state III. Ex Jim Long 12/97-Terry K. Stef1-Superior 2/18/02:1219.



241. 1798 S-177 R4+ F15, Style II Hair with Small 8. Glossy dark chocolate brown. Smooth and quite attractive. No roughness or verdigris. The only notable marks are a dull diagonal nick on the left base of the E in LIBERTY and a few very light contact marks on the rim over LIB and ICA. M-LDS, Breen state IV.



242. 1798 S-177 R4+ G4+, Style II Hair with Small 8. A few points sharper with fine roughness, strongest on the upper half of the reverse. There are traces of shallow verdigris at the top of the wreath but no significant contact marks. Slightly glossy dark steel and olive. The date is complete and strong and the legends are all readable. M-LDS, Breen state IV. Ex John Pijewski.



243. 1798 S-178 R5+ Fair-2, Style II Hair with Small 8. Reverse of 1796. Slightly sharper but corroded. A faint dusting of greenish verdigris shows in some protected areas of the obverse. No marks. The date is complete and easily readable in spite of the roughness, and LIBERTY is visible as well. Perhaps 25% of the reverse is still visible, and the single leaf feature at the top of the wreath can be seen without much effort. Dark steel brown and olive. A scudgy example to be sure, but who among us has seen a choice one?



240. 1798 S-177 R4+ VF20, Style II Hair with Small 8. Sharpness near VF35 with a few patches of shallow corrosion on the reverse, mostly at CENT into the ribbon and fraction below. No verdigris and the only contact marks are a couple very light rim bruises, including one left of the lower end of the hair ribbon. The obverse is quite attractive, free of any hint of corrosion or verdigris. Slightly glossy dark olive and steel with lighter steel brown highpoints. M-LDS, Breen state IV. Called VF30 net VF20 and tied for CC#6 in the Bland census. Noyes says VF35 net F12 and tied for CC#9, his photo #28713. Ex Dr. Bob Shalowitz 1/7/83-Jack Robinson, McLaughlin & Robinson Auctions 1/88:112-R. S. Brown, Jr., Superior 1/27/96:243-Tom Reynolds 1997-Jack Wadlington.

RARE EARLY DIE STATE 1798 S-180



244. 1798 S-180 R5+ F12. Style II Hair with Small 8. Sharpness F15 or slightly better but there are some contact marks, including a dull and rather strong rim nick at the R in LIBERTY, lighter nicks and abrasions scattered about both sides, and traces of extremely faint roughness under a glossy dark steel brown and chocolate patina. No verdigris, and the eye appeal is quite nice for the grade, the rim nick at R the only defect of any real significance. EDS, Breen state I, before any cud breaks. The date and legends are complete and clear. Called F12 and tied for CC#9 in the Bland census. Noyes says F15 net VG8 and CC#12, his photo #28477. Ex J. R. Grellman 4/14/91-R. S. Brown, Jr., Superior 1/27/96; 246-Chris McCawley 9/96-Jack Wadlington.

245. 1798 S-180 R5+ AG3. Style II Hair with Small 8. Glossy chocolate and steel brown. The surfaces are smooth showing only minor hairline scratches and no verdigris. Basically just a worn cent. The date is weak (due in part to the opposing cud break at TATE) and the legends are complete except for OF AMERICA, which is faint but readable with some effort. MDS, Breen state III. The cud break at TATE is clear.



246. 1798 S-182 R4 F15. Style II Hair with Small 8. Five points sharper but there is a thin horizontal nick on the end of the nose plus a few other minor contact marks scattered over both sides, none notable. Attractive glossy chocolate brown and steel. MDS, Breen state II.



247. 1798 S-183 R5 VG7. Style II Hair with Small 8. A few points sharper but covered with fine granularity. No marks or verdigris, just a few light nicks of no consequence. Slightly glossy olive and steel brown. The date is easily readable and the legends are complete. Removed from an ANACS slab graded VG8 (ANACS label included, and it shows the attribution). Ex 1998 EAC Sale, lot 123-Colonel Steven Ellsworth collection.



248. 1798 S-187 R1 VF25. Style II Hair with Small 8. Sharpness EF45 with very fine granularity covering both sides, strongest at OF-A. No verdigris and just a few contact marks, including a shallow scrape on the rim at the bust tip, a very light rim bruise left of the hair ribbon, and a dull rim nick at LI in LIBERTY. Frosty chocolate and steel brown with some lighter golden brown toning at the lower curls. E-MDS, Breen state II. The reverse is rotated 25 degrees CCW. Ex W. Motorwalla 8/28/88-Dalton Georgia bourse 8/27/99. CSKEC



249. 1799 S-189 R2 G5. Considerably sharper over most of both sides, at least F12, but the strike is uneven causing significant weakness at the bottom of the obverse and top of the reverse (from die faces not in proper parallel alignment). As a result the date is gone (unless you have a good imagination), and the same can be said for STATES OF. Both sides are covered with very fine corrosion, and there are traces of shallow greenish verdigris in some of the protected areas. The only contact mark is a tiny rim nick under the fraction. Slightly glossy dark olive and steel with splashes of reddish brown toning at the top of the reverse. LDS. The lump over T in CENT is bold and the rim cud break at CA is strong. Ex Superior 9/04-419.



251. 1799 S-189 R2 AG3 (SEGS slabbed as VF20 corroded). Sharpness at least F12 but moderately corroded and there is a deep and rather large planchet lamination (now delaminated/gone) that obliterates the fraction and part of the ribbon bow. The right half of each side retains good detail while the left sides are severely weakened by the corrosion, which is considerably stronger on the left sides. The date is full and easily readable, and the lump over T in CENT is clear. MDS.



252. 1799 S-189 R2 Fair-2+. The obverse is AG3 but the reverse is weaker, somewhere between Basal State-1 and Fair-2. Glossy chocolate and steel brown with some darker olive brown mixed in on the reverse. The surfaces are smooth and the only significant marks are a rim nick at the first S in STATES and another at the second S, plus a few faint hairline scratches on both sides. No roughness or verdigris, just well worn. The upper half of the date is clear. LIBERTY is readable although not complete, and about a quarter of the reverse is legible. A decent lower grade example of this tough date.



250. 1799 S-189 R2 AG3. Sharper by a point or two but covered with very fine roughness. No marks or verdigris. Dull dark steel brown. The date is nearly full and easily readable, and the legends can all be made out with a minimum of effort. Not at all bad for the grade, and the clear date is a big plus. Ex B. Lassiter 8/24/86-S, Thurman.



253. 1800/1798 S-190 R3 F15. Overdate 1800 over 1798 with Style I Hair. Slightly sharper but there is a rim dent right of the bust tip and a pair of dull, light rim nicks at the bottom of the reverse. Smooth surfaces. Glossy dark steel brown and chocolate. EDS, Breen state 1. The overdate is clearly visible. Removed from a PCI slab graded VF30 (PCI label included, and it shows the attribution). Ex Walter Reed.



254. 1800/179 S-192 R3 VF25. Overdate 180 over 179. Style II Hair. Ten points sharper but burnished and nicely retoned glossy chocolate and steel brown with frosty lighter brown in protected areas, especially on the obverse. The only mark is a small area of faint roughness at the I in AMERICA. Has the eye appeal of a significantly higher grade. MDS, Breen state III. The overdate is bold. Ex Ron Cooper-Walter Reed.

255. 1800/179 S-193 R4 VG7. Overdate 1800 over 179. Style II Hair. Several points sharper but the surfaces are slightly uneven. No verdigris. Cleaned and retoned mostly glossy medium steel with reddish brown and chocolate toning in protected areas. The only contact marks are a light rim bruise left of the lowest curl and a small rim nick at the Y in LIBERTY. The date is strong, the overdate is obvious, and the legends are clear. Ex John Hipps 1/04.



256. 1800/179 S-194 R3 F15. Overdate 1800 over 179. Style II Hair. Sharpness near VF30 but covered with uniform very fine granularity under a rather glossy dark steel and olive patina. No verdigris, and the only marks are a light rim nick left of the date and a sharp rim nick over the left side of the E in STATES. MDS, Breen state III. Ex Walter Reed 4/24/03.



257. 1800/179 S-195 R5 F12. Overdate 1800 over 179. Style II Hair. Slightly sharper with a fine hairline scratch in the field under the hair ribbon plus a few minor nicks scattered over both sides, none significant. Glossy dark steel brown and olive. MDS, Breen state II. The date and legends are complete and clear, and the overdate is obvious. Called F12 in the Bland census. Noyes photo #34526. Ex Allen E. McDowell-Jake Hendin 4/76-Del Bland-Dr Willard J. Carmel, Jr.-Jack Beymer-Jack Robinson, Superior 1/29/89:412.



258. 1800 S-198 R5+ AG3. Style II Hair with Small 8. Expertly Plugged. The obverse is close to G4 while the reverse is weaker. The surfaces are decent but do show microscopic roughness in the fields and protected areas. No verdigris or marks. Recolored a slightly glossy light chocolate brown and darker olive. This piece was expertly plugged just right of the date to fill a round hole the same size as a 0 in the date, and the work is nearly undetectable. EDS.



261. 1800 S-201 R5 G5. A point sharper with very fine roughness covering the fields and protected areas. No verdigris or marks. The date is strong and the legends are clear. Dark steel and olive with slightly lighter highpoints. E-MDS. Breen state II.



259. 1800 S-199 R4 VG10. Sharpness VF25 with fine granularity covering both sides. No verdigris or marks. Matte dark steel and olive with slightly lighter steel brown highpoints. Nicely struck MDS. Breen state V, with a small but strong cud break at the right top of the F in OF. Ex Darwin B. Palmer 1993.



262. 1800 S-201 R5 G4+. A point sharper with a strong nick at the top of N1 in UNITED. Slightly glossy chocolate brown, the obverse a few shades lighter than the reverse. Extremely fine granularity covers the fields and protected areas, but there is no verdigris and the somewhat glossy patina effectively hides the minor roughness. The date and legends are complete and easily readable. EDS, Breen state I. Ex Ray Chatham collection-Jack Beymer 1992.



260. 1800 S-200 R3 VG7. Attractive glossy medium brown with chocolate toning in protected areas. No roughness and only minor marks, including a very light rim bruise under the bust tip and a nick between the two top leaves in the wreath. E-MDS, Breen state II. The date and legends are complete and strong except for weakness due to die swelling at STA. Nearly choice for the grade. Ex Mark B. Hotz 6/15/92.



264. 1800 S-202 R4+ VG7. Slightly glossy dark olive with chocolate brown highpoints. The protected areas are covered with extremely fine granularity. No verdigris or marks other than a tiny rim nick left of the L in LIBERTY. The date and legends are complete and clear. E-MDS. Breen state II.



265. 1800 S-202 R4+ G6. Sharpness F12 with raised corrosion covering most of the field before the portrait. A few small spots of similar corrosion are located elsewhere on the left side of the obverse, and the remainder of the planchet shows extremely fine roughness under a mostly glossy dark olive patina. The date is bold and the legends are strong except for weakness from swelling at STATE. LDS. Breen state VI. Ex McLaughlin & Robinson Auctions 9/97:241-Colonel Steven Ellsworth collection.

RARE TERMINAL DIE STATE 1800 S-203



266. 1800 S-203 R3 VG10. Mostly glossy olive brown and chocolate with lighter steel brown highpoints. Trivial roughness on the lower reverse but no verdigris or significant marks. Good eye appeal for the grade. The date and legends are complete and clear. Rare terminal die state, Breen state V late, with a clear die crack through the top of ES to the dentils on either side. A die crack not mentioned in the Breen book.



267. 1800 S-204 R4 VG8. A couple points sharper but cleaned and nicely retoned glossy chocolate and steel brown with a small scuff of lighter toning on the jaw. A few minor contact marks consistent with the grade, including a small pinprick in the field before the lips. MDS. Breen state III. The date and legends are complete and strong. Ex Farigoni 1978-Rod Stern 2/81-John D. Wright-Allen Bellard-Colonel Steven Ellsworth collection.



268. 1800 S-205 R4 VG8. Sharpness VF20 with patches of minor corrosion, mostly on the reverse. A scratch down the right side of the O in OF is the only significant contact mark. Recolored a slightly glossy dark steel with traces of chocolate on both sides. The date and legends are complete and clear except for the bottom of the 18, which is weaker. MDS. Breen state II. Ex Rust Coins-Colonel Steven Ellsworth collection until 9/20/97.



269. 1800 S-206 R3 F12. Sharpness VF35 with a dull dent in the field at the bottom of the hair ribbon and similar dull dents at the D in UNITED and TE in STATES. The dent at TE caused some flatness on the 8 in the date, but that digit is still readable. Slightly glossy dark steel brown and chocolate. Microscopic roughness covers the fields and protected areas, but the dents are the real problem. EDS. Breen state I. Ex Fred Borchardt 2/99-Walter Reed.



270. 1800 S-207 R3 F15. Sharpness VF35 but covered with uniform very fine granularity under a glossy dark olive and steel patina. No verdigris, but there are some faint, dull scratches under the patina in the field before the face. A small rim nick over the F in OF is the best identifying mark. MDS. Breen state III. The date and legends are bold. Removed from an NCS slab graded EF details, corroded (NCS label included, and it shows the attribution).



271. 1800 S-208 R3 VF20. Sharpness VF35 with a few dull scratches down in the field along the profile of the nose, a few other lighter scratches elsewhere on the obverse, and a few dozen tiny but sharp rim nicks/cuts spaced around the reverse. Otherwise a rather attractive piece. Glossy chocolate brown with darker olive and steel mottled on both sides. LDS, Breen state IV, with a strong cud break covering the tops of TY extending along the rim to before the eye. Called VF35 net VF20 and tied for CC#9 in the Bland census. Ex Larry Whitlow 4/67-R. E. Nafziger, Jr., New Netherlands Coin Co. 11/73;523-Bob Vail 11/21/88-Del Bland-Chris McCawley-McLaughlin & Robinson Auctions 9/89;293-Colonel Steven Ellsworth collection.



272. 1800 S-210 R5+ VG7. A point sharper with extremely faint roughness covering the fields and protected areas. The minor roughness is offset by a rather glossy patina of chocolate and olive brown. No verdigris or significant marks, although a diagonal nick close under the earlobe can help identify this cent. EDS, Breen state I. Ex Jim McGuigan-1995 EAC Sale, lot 223-Colonel Steven Ellsworth collection.

273. 1800 S-210 R5+ Fair-2. A point or two sharper but there are numerous dull rim nicks and bruises around both sides and the planchet is covered with fine roughness. Dark steel with slightly lighter highpoints. The date is easily readable and the legends are readable except for STATES OF. Ugly but attributable. EDS (as best I can tell).

274. 1800 S-211 R3 AG3. The obverse is G4 but the reverse is Fair-2 at best. Rather smooth and the only marks are a pair of dull rim nicks on the reverse. Glossy dark chocolate and steel brown. The date is clear. Scarce EDS, Breen state I, before the die line under the L in LIBERTY.

275. 1800 S-212 R3 VG8. Sharpness F12 with extremely fine roughness under a glossy dark olive and steel brown patina. No notable verdigris, but there is a long, sharp nick in the wreath under NT in CENT. EDS, Breen state I. The date and legends are complete and strong. Ex Heritage 4/24/05;23045-John Pijewski.

276. 1800 S-212 R3 VG8. A couple points sharper with a shallow planchet lamination void covering the area between the second S in STATES and the adjacent O in OF. Some minor contact marks and traces of microscopic roughness in a few places, none significant. Glossy reddish chocolate brown with lighter brown highpoints. The date and legends are complete and clear. MDS, Breen state III. Ex Chris Young 12/94-Colonel Steven Ellsworth collection.

LATE DIE STATE 1800 NC-2
THE NOYES PLATE COIN



277. 1800 NC-2 R6+ G6. Overdate 180 over 179. Style II Hair. Noyes Plate Coin. The obverse is slightly better, the reverse a bit weaker. Both sides are covered with small nicks, and there is a short scratch under the F in OF. Glossy chocolate brown. The date is complete and clear and the legends are easily readable. Late die state, Breen II, with a long, thin cud break at the rim from the bust tip to opposite the chin. Called G6 and tied for CC#4 in the Noyes census, his photo #26782. Bland says G5 and tied for CC#7. The obverse is plated in the Noyes book to illustrate the late die state. Ex Del Bland 2/84-Jules Reiver, Heritage 1/24/06;19453.



279. 1800 NC-3 R6- G6. Sharpness VG10 with fine roughness covering both sides. No verdigris, only a few contact marks, including a nick hidden in the top of the Y, a pinprick in the field off the chin, and a thin diagonal scratch over the N in ONE. Mostly glossy chocolate brown, the color and gloss better than you would expect with these surfaces. The date and legends are complete and strong, and the spike up from the top of the I in AMERICA is obvious. Ex Henry T. Hettger, Superior 9/98;1214-Colonel Steven Ellsworth collection.



280. 1800 NC-3 R6- AG3+. The obverse is a full G4 while the reverse is only AG3, but both sides are very nice, nearly choice for the grades. A small planchet chip in the leaves over the left top of the O in ONE is the best identifying mark. Glossy dark olive with lighter steel brown highpoints. The date is full and clear, and the spike up from the top of the I in AMERICA is obvious. Ex Don Valenziano-James E. Long 10/6/88-Daniel W. Holmes, Jr.

278. 1800 NC-3 R6- VG10. Glossy steel and chocolate brown. Excellent surfaces showing no trace of roughness or verdigris and only a few trivial contact marks. The notable marks are a pinprick in the field off the nose tip and a light rim bruise at UN. LDS. Breen state 11. The obverse sharpness is slightly lower than the VG10 grade assigned thanks to the obvious swelling at the shoulder and surrounding area, but the reverse certainly supports at least that grade. A very attractive example of a rare variety that nearly always has serious defects. CC#3.



281. 1801 S-213 R2 VF20. Five points sharper with some light contact marks, including a fine vertical hairline scratch on the right side of the 0 in the date and a dull pinch on the rim at the top of the reverse. Otherwise the surfaces are smooth and attractive. Glossy steel and chocolate brown with an area of reddish steel brown toning at AT in STATES. LDS. Breen state VIII. Ex Lahrmann sale, Abe Kosoff 1963;221-John Schreuder 4/70-Del Bland-Glenn Kemp-Del Bland-Jack Beymer 12/86-Colonel Steven Ellsworth collection.



282. 1801 S-215 R4+ G6. **Clipped Planchet.** Perhaps a point sharper but there is a collection of very fine hairline scratches in the field before the face, none serious but too many to ignore, plus the usual complement of small nicks scattered about both sides. Glossy steel brown and chocolate. The date and legends are complete and clear. A curved planchet clip left of the date nearly reaches the top of the first T in STATES. E-MDS, Breen state III.



285. 1801 S-219 R2 VG10. **3-Error Reverse.** Five points sharper but there is uniform microscopic granularity hidden under a rather thick, glossy dark olive and steel patina. The only notable mark is a bit of shallow corrosion on the rim left of the L in LIBERTY and at the opposing rim over NIT. MDS, Breen state IV. The date and legends are complete and strong, and the 3 reverse die-cutter errors are clear.



283. 1801 S-216 R1 F12+. Glossy steel and chocolate brown. Smooth and quite attractive for the grade, only a few minor contact marks. E-MDS, Breen state II. The strike is weak at the bust tip and OF, as mentioned by Breen for this die state.



286. 1801 S-219 R2 G5. **3-Error Reverse.** Slightly glossy chocolate and steel brown. There is a patch of fine roughness at the forehead, a bit more on the bust tip, and microscopic roughness scattered about the reverse. No verdigris or significant marks. The date is complete and clear and two of the 3 reverse die-cutter errors are bold. The error denominator (000) is weak due to die swelling in that area. M-LDS, Breen state V.



284. 1801 S-218 R5+ G5. **3-Error Reverse.** A couple points sharper with light corrosion, mostly on the reverse. No verdigris. The only significant mark is a thin scratch from the throat to the rim at right. The date is complete and strong and the reverse legends are easily readable, although the 000 denominator is relatively weak. MDS with swelling that obliterates ERTY.



287. 1801 S-221 R2 VF20. **Corrected Fraction 100 over 000.** Ten points sharper but there is a light scratch arcing in the field under D-STATES-OF-AMERIC. Otherwise only a few trivial marks and no roughness or verdigris. Attractive glossy chocolate brown. MDS, Breen state IV. The corrected fraction feature is clear. Called VF30 net VF20 and tied for CC#23 in the Noyes census, his photo #25551. Ex John Ashby-John D. Wright.



288. 1801 S-221 R2 VF20. Corrected Fraction 100 over 000. Attractive glossy chocolate brown with olive brown in protected areas and reddish chocolate in the hair under the ribbon. Smooth surfaces with only trivial marks, including a few tiny nibbles on the rim over TE in STATES. MDS. Breen state IV early. The rim cud at AM ends before it reaches the right side of the M. The corrected fraction feature is clear. Ex Bert Cohen 2/83-Colonel Steven Ellsworth collection.



289. 1801 NC-1 R6 AG3. Glossy medium brown and chocolate. No roughness or verdigris and only minor marks, including a tiny rim nick under the first 1 in the date and a light rim bruise at the 1 in UNITED. Basically just a well worn cent. The date is complete and strong and most of the reverse legend is easily readable. The strong die clashmarks and rim failure at TES are obvious. LDS. Breen state II. Ex Walter Reed.

290. 1801 NC-2 R7 AG3+. A few points sharper but granular, especially on the lower half of the reverse. No verdigris, and the only mark is a small dig or planchet chip in the field under the hair ribbon. Dark olive and steel with slightly lighter steel brown highpoints. The date is clear but LIBERTY is faint and the details on the lower third of the reverse are severely weakened by the roughness. The die clashmark at ES-O is strong. Listed as G5 and CC#4 of 7 known in the Bland/Breen census. Noyes says VG7 net Fair-2 and tied for CC#4 of 8 known, his photo #25595. Either way, this is an important cent.



291. 1801 NC-3 R6+ G5. Error Fraction 1/000. Sharpness VG10 but covered with fine granularity. No verdigris and only a few minor marks, including a rim nick right of the bust tip and a small rim bruise just right of the Y in LIBERTY. Slightly glossy dark steel brown and olive with traces of lighter brown toning in protected areas. The date is strong and the legends are complete, including the error fraction. At the lower end of the condition census.

292. 1802 S-225 R3 VF25. Five points sharper with a few too many light contact marks for the higher grade. The notable ones are a shallow chip at the left top of the E in LIBERTY, a pinprick on the peak of the numerator in the fraction, and a short vertical line of tiny ticks over the right side of the O in ONE. Glossy olive brown and dark chocolate. Extremely rare LDS. Breen state V1, with a large raised retained cud break at ES-O.



294. 1802 S-229 R2 VF20. Choice glossy steel brown and chocolate. Virtually perfect for the grade. A very light nick near the hair under the L and a barely visible one at the top of the 2 in the date are the best identifying marks, and they are trivial. EDS, Breen state I. Ex Fred H. Borchardt 9/96-Walter Reed.



295. 1802 S-230 R1 VF25. Sharpness near EF40 but there are tiny nicks scattered over the obverse and traces of extremely fine roughness on the reverse. A light rim bruise right of the date and a shallow pit over the C in CENT are the significant marks. Glossy steel brown and chocolate with reddish steel toning splashed on the lower half of the reverse where the microscopic roughness is found. MDS, Breen state VII. Ex Walter Reed.



296. 1802 S-233 R2 F15. Five points sharper but lightly cleaned and retoned glossy medium brown with lighter steel brown in some areas where faint hairlines remain from the cleaning. No roughness or notable marks. EDS, Breen state I. Ex Miguel Lopez 7/02-Walter Reed.

293. 1802 S-227 R2 VF35. Sharpness AU50 but there are two dull horizontal pinceratches in the field before the chin and several more very light ones above and below the two obvious ones. Otherwise the surfaces are beautiful, and the reverse is absolutely choice. Glossy chocolate brown with small clouds of darker olive brown toning scattered about the obverse. The reverse is covered with satiny mint frost and there are hints of very faded mint red remaining in some of the protected areas. MDS, Breen state II. Softly struck at the lowest curl and around the opposing second T in STATES. Otherwise nicely impressed.

297. 1802 S-233 R2 VG8+. A couple points sharper but retoned glossy chocolate and steel brown with some faded artificial red in protected areas. No roughness or significant marks. E-MDS, Breen state II. The date and legends are complete and strong.

298. 1802 S-235 R3 VG7. Sharpness VF20 but covered with fine to moderate granularity that's hidden somewhat under a mostly glossy patina of dark olive and reddish steel. No marks or verdigris. M-LDS, Breen state V late. Softly struck at the bust and OF due to dies not in proper parallel alignment, a situation described by Breen for this die state. The strike caused the date to be weak as well, but everything else is complete and strong.



299. 1802 S-238 R4 VF25. Breen Plate Coin. Sharpness EF40 but lightly cleaned and retoned glossy dark olive brown with lighter brown toning in protected areas. The surfaces are smooth, free of any trace of carbon or verdigris. There is a rim bruise opposite the chin and lighter ones at the L in LIBERTY and N1 in UNITED, plus a few dull scratches over ENT in CENT. MDS. Breen state III. Listed as EF40 net VF30 and tied for CC#1 in the Bland census. Noyes says EF40 net VF25 and tied for CC#4, his photo #23238. This is the Breen plate coin for the variety. Ex New England Rare Coin Galleries-Denis Loring 3/18/74-C, Douglas Smith-Dr. Robert A. Schuman, Superior 2/18/02:1272-Dr. Wallace Lee, Superior 5/25/03:514-Jack Wadlington.



300. 1802 S-238 R4 VF20. Sharpness near VF30 but cleaned and retoned glossy dark olive and steel with chocolate toning on the highpoints. There are a few light vertical pinscratches hidden in the hair under the ribbon, a couple more in the hair above the ear, another near the rim at the left, and a light rim bruise off the lower end of the hair ribbon. E-MDS, Breen state II. Ex Fred H. Borchardt.



301. 1802 S-239 R3 F12. A few points sharper but there is extremely fine roughness in the fields and protected areas. This minor roughness is well hidden under the rather glossy dark steel brown and chocolate patina. No verdigris or notable marks. Rare EDS, Breen state II. Ex Walter Reed.



302. 1802 S-240 R3 F15+. Ten points sharper but covered with very fine granularity under the rather glossy olive and chocolate brown patina. No marks or verdigris. M-LDS, Breen state III. Ex Walter Reed.



303. 1802 S-241 R1 VF35. Stemless Wreath with Double Fraction Bar. Sharpness EF45 but recolored frosty bluish steel and light olive. The only mark is a fine hairline scratch in the field behind the head. The surfaces are nice, but the obverse is slightly matte due to extremely fine granularity that's visible only with the aid of a very strong glass. E-MDS. Breen state II. The top of the obverse and bottom of the reverse are softly struck. The stemless wreath and double fraction bar features are clear.

305. 1802 NC-1 R5+ VG10. Sharpness VF25 with nicks scattered about both sides, strongest on the obverse. There are traces of minor roughness, mostly on the portrait, and a rim dent under the 80 in the date, plus a trace of greenish verdigris at the throat. Glossy mottled mix of chocolate, steel brown, reddish chocolate, and olive brown. The date and legends are complete and strong. Late die state, the bisecting obverse die crack clear. Noyes photo #28028. Ex Al Collins-Dorothy Paschal-Ray Chatham-Ed Schwartz-Abe Kosoff-Kagin's 10/14/83:1050-1995 EAC Sale, lot 235.



304. 1802 S-241 R1 VF25. Stemless Wreath with Double Fraction Bar. Attractive glossy medium brown and chocolate. Smooth surfaces with only a few trivial marks, including a thin nick near the dentils behind the head and a small pinprick under the T in CENT. MDS. Breen state III. Ex Walter Reed.



306. 1802 NC-1 R5+ AG3+. A point or two sharper but lightly cleaned with traces of very light roughness showing in several places. No verdigris and the only marks are consistent with the grade, including a rim nick left of the lowest curl. The date is easily readable, although the bottom is weak, and the legends are complete. Light coppery steel brown with darker steel brown and olive toning in protected areas. The bisecting obverse die crack is not visible but the spike down from the bust right of the date is clear.

307. Group of 5 Draped Bust Cents. Includes a pair of 1802's, one 1803, and two with uncertain dates. Grades are Basal State-I to AG3. All are rough, damaged, or worn out (or some combination of the three). Lot of 5 coins.



308. 1803 S-243 R2 VF25. Stemless Wreath with Double Fraction Bar. Very attractive glossy steel brown and chocolate with lighter highpoints on the lower part of the reverse. Smooth and free of marks. EDS, Breen state I. Ex Bowers & Merena 12/4/03:134-John Pijewski. Superior 5/05:1433-Colonel Steven Ellsworth collection.



309. 1803 S-244 R4 VF20. Sharpness EF-40 with fine granularity covering both sides. There is fine verdigris dusted into protected areas, mostly on the lower half of the reverse. No marks. The roughness is hidden somewhat under a rather glossy dark olive patina with steel brown highpoints. MDS, Breen state II.



310. 1803 S-244 R4 F15. Very close to VF20 but there are too many minor nicks scattered about the obverse for the higher grade. None of the marks is at all distracting, but there are too many to ignore. Attractive glossy chocolate brown. LDS, Breen state III.



311. 1803 S-245 R3 VF20. Glossy chocolate brown, the reverse mottled a bit with lighter and darker tones of chocolate brown. No marks or verdigris. MDS, Breen state II.



312. 1803 S-245 R3 VF35. Five points sharper but there are some short, dull scratches at the Y in LIBERTY and a few small pinpricks at the dentils right of the fraction. Otherwise the surfaces are smooth and quite attractive. Glossy dark steel brown with frosty light brown toning in protected areas, especially on the reverse. Satiny luster shows in the protected areas on both sides. Late die state, Breen state III, with a strong cud break at RICA.



313. 1803 S-246 R3 VF25. **Mumps Obverse.** Five points sharper with a small patch of very fine roughness near the dentils before the mouth. Otherwise the surfaces are smooth and the eye appeal is excellent. Glossy dark chocolate brown with medium chocolate toning on the highpoints. LDS, Breen state IV, with a strong cud break joining STA to the rim above. The "mumps" feature at the throat is clear.



316. 1803 S-247 R3 F15. **Mumps Obverse.** Sharpness VF30 with shallow reddish verdigris in protected areas and darker olive verdigris at ERICA. There is some faint porosity on the chin and a dull rim nick at CA in AMERICA. Glossy dark steel brown and reddish chocolate with traces of lighter and darker shades mixed in on both sides. M-LDS, Breen state II late. Ex Denis Loring.



314. 1803 S-246 R3 F12. **Mumps Obverse.** Sharpness EF40 but covered with uniform moderate granularity. No marks or verdigris. Slightly glossy dark olive and steel brown. LDS, Breen state IV, with a strong cud break at STA. Ex Colonel Steven Ellsworth collection.



317. 1803 S-247 R3 VG10. **Mumps Obverse.** Glossy light olive and chocolate brown. Free of corrosion or verdigris, only minor nicks scattered about the obverse from choice. MDS, Breen state II. Ex Stack's 11/1950:728-Willard C. Blaisdell-1977 EAC Sale, lot 56-David Garvin, 2005 EAC Sale, lot 239.



315. 1803 S-247 R3 VF20+. **Mumps Obverse.** Close to VF25 but there are a few too many minor contact marks for the higher grade, including a very light rim bruise under the 3 in the date and another under the right side of the fraction. Attractive glossy chocolate brown. EDS, Breen state I. Ex 2000 EAC Sale, lot 244-2003 EAC Sale, lot 471.



318. 1803 S-251 R2 VF20. Sharpness close to VF25 but there are two small rim bruises at TY, a couple more left of the lower curls, and another at F-A. Otherwise the surfaces and eye appeal of this cent are excellent. Choice glossy steel brown and chocolate. Nicely struck EDS, Breen state I. Ex Walter Reed.



319. 1803 S-251 R2 AU55. Mint state sharpness but there is a patch of shallow roughness at the O in OF, and darker chocolate toning covers OF to the adjacent S. There is a dull nick or struck-through mark on the jaw at the throat and a speck of crud at the dentils just left of the fraction. Otherwise the surfaces and eye appeal of this cent are excellent. Lustrous light steel brown with splashes of darker chocolate brown toning on both sides. E-MDS. Breen state II. In the middle of the condition census for the variety with only two known in mint state.



320. 1803 S-252 R2 EF45. Five points sharper, perhaps even better from the standpoint of wear alone, but the strike is a bit blunt. The color and surfaces are quite attractive, and the only marks are a small spot of darker toning near the dentils left of the hair ribbon and another between the second A in AMERICA and the adjacent ribbon end. Otherwise the color is a choice glossy light olive with frosty underlying luster in protected areas. E-MDS, Breen state II. Ex Heritage 1/2000:5046 where graded AU58 and misattributed as S-257.



321. 1803 S-253 R2 VF30. Sharpness EF45 with extremely fine roughness hidden under the rather glossy dark olive and steel patina. The obverse offers more gloss than the reverse. No verdigris or marks other than a small rim nick under the lowest curl and a thin horizontal nick at the dentils before the mouth. MDS. Breen state IV. Ex Walter Reed.



324. 1803 S-258 R1 F12+. Large Fraction. Sharpness near F15 with a small chip in the hair over the ear and a rim bruise at the first A in AMERICA. Glossy chocolate and steel brown. MDS. Breen state III. Ex Walter Reed.

325. 1803 S-258 R1 VG7. Large Fraction. Slightly sharper with traces of very light roughness. The date and legends are complete and clear. Glossy bluish steel brown and olive. MDS.



322. 1803 S-255 R1 VF30. Sharpness EF45 with a patch of fine porosity covering the 3 in the date. No verdigris, and the surfaces are smooth except for the single patch of roughness. The only notable contact mark is a light rim bruise at RI in AMERICA. Lightly cleaned and nicely retoned glossy chocolate and light olive brown with frosty tan toning in protected areas. MDS. Breen state III.



326. 1803 S-259 R4 F12. Large Fraction. Sharpness EF40 but covered with fine porosity. No verdigris and only trivial contact marks, including tiny rim nicks at the E and Y in LIBERTY. Slightly glossy very dark steel and olive brown. E-MDS. Breen state I. Ex Bowers & Merena 3/96.



323. 1803 S-257 R2 VF25 (PCI slabbed as EF40). Large Fraction. Dark olive and steel brown. A strong glass reveals extremely faint granularity under the natural patina, but there are no marks and the only verdigris appears to be soft and confined to protected areas. Very scarce late die state, Breen state V, with a slightly raised retained cud break at the top of the reverse that severely weakens STATES and the opposing details at the 18 and lowest curl.



327. 1803 S-260 R1 VG10. Large Fraction. A few points sharper but cleaned and retoned a slightly glossy olive and chocolate brown with traces of reddish brown in protected areas. No roughness or verdigris. There are some nicks scattered about the obverse and a small rim bruise at the second A in AMERICA. MDS. Breen state II.



328. 1803 S-262 R3 F15. Sharpness close to VF20 with a few light contact marks, including a small rim bruise under the 0 in the date and a thin vertical scratch down through the N's in ONE CENT to the bow below. Attractive glossy steel brown and chocolate. Ex Tom Reynolds 1/2000-Robert C. Clark, Bowers & Merena 8/9/2000:314-Colonel Steven Ellsworth collection.



331. 1803 S-263 R3 F15. Sharpness AU50 with uniform moderate granularity covering the planchet. No marks or verdigris. Sharply struck MDS. Breen state V, with a strong cud break connecting the date to the rim below. Dark olive and steel brown. Ex Superior 9/98:1240-Colonel Steven Ellsworth collection.



329. 1803 S-262 R3 VG7. Sharpness F12 but covered with uniform very fine roughness under a slightly glossy steel and chocolate brown patina. No verdigris or notable signs of contact. The date is strong and the legends are complete. MDS. Breen state II.



332. 1803 S-263 R3 VF20. Ten points sharper with traces of microscopic roughness and minor contact marks on both sides. The only notable marks are a light rim bruise at the bust tip and a nick close over the left side of the C in CENT. No verdigris. Rather glossy reddish brown and chocolate with darker steel brown highpoints. LDS. Breen state VI, with a strong cud break connecting the date to the rim below. Ex Tom Reynolds 1996-Jack Wadlington.

RARE EARLY DIE STATE 1803 S263



330. 1803 S-263 R3 VF20. Sharpness VF35 with extremely fine roughness under a glossy dark greenish olive brown patina. There is some fine verdigris or crud dusted into some of the protected areas. The notable marks are a small, shallow dig in the field off the lower end of the hair ribbon, a faint vertical scrape on the right half of the wreath ribbon, and a very light rim bruise at the T in UNITED. Rare EDS. Breen state I, before the obverse die cracks.

SHARP 1803 S-264 LARGE DATE SMALL FRACTION



333. 1803 S-264 R4+ G6. Large Date with Small Fraction. Sharpness VF20 or better but damaged by contact marks. Included among the marks are tiny ticks covering the face and a collection of deep digs just right of the fraction. The surfaces are free of any hint of corrosion or verdigris, and the color is a very attractive glossy medium chocolate brown with a bit of darker chocolate toning under EN in CENT. The date and legends are complete and strong. LDS. Breen state III. A cent that's difficult to grade given the number of marks. The net grade assigned may be a bit low, and the eye appeal probably is better than you might expect from the description.



334. 1803 S-265 R4 G6. Large Date and Fraction. A couple points sharper with very fine granularity covering both sides. No verdigris, only a few very light rim bruises, none notable. Slightly glossy chocolate and steel with some olive at the top of the obverse. The date and legends are clear except for weakness at STATES OF, mostly due to the die cracks at the top of the reverse. MDS, Breen state IV.



335. 1803 NC-1 R5+ VG7. Sharpness F15 with several slightly smoothed rim dents on each side, the strongest of these being left of the lower end of the hair ribbon, and this dent has an opposing pinch on the reverse rim at D-S. There are some sharp rim nicks at the bust tip, another on the left side of the C in AMERICA, and one more on the rim over the second S in STATES. The obverse is smooth but there are traces of very fine roughness in protected areas of the reverse. Glossy steel and chocolate brown. MDS, Breen state II. The date and legends are complete and strong. Ex Tom Reynolds-Grant O. Reed, Superior 9/21/98:1244-Walter Reed 4/03-Colonel Steven Ellsworth collection.



336. 1804 S-266a R4 VG7. Sharpness VF20 but covered with uniform moderate granularity. No verdigris or contact marks. Slightly glossy dark olive brown and chocolate. The date is strong and the legends are complete. EDS, Breen state I. The reverse is slightly misaligned to K-9 while the obverse is properly centered on the planchet. Removed from an NCS slab graded VF details corroded (NCS label included, and it shows the attribution).

337. 1804 S-266a R4 Fair-2. Slightly glossy dark bluish steel brown and chocolate with slightly lighter highlights from an old cleaning. Some minor marks consistent with the grade, but basically just well worn. The 4 in the date is faint but readable while the 0 is partially there and the 18 is gone. About half the reverse remains visible. Early die state, before the cud breaks occur.



338. 1805 S-267 R1 AU50. Five points sharper but there is a stain of darker chocolate brown toning at ERICA to the fraction, and this stain contains a very faint dusting of microscopic carbon or crud, possibly removable. Glossy mottled mix of steel brown and chocolate with frosty light brown toning in protected areas. M-LDS, Breen state III.



339. 1805 S-267 R1 VF20. Glossy medium brown and chocolate. Smooth and choice except for a small patch of reddish olive toning at the lower curls and some dull rim nicks at the bust tip, plus a short scratch over CE in CENT. Excellent eye appeal in spite of the minor defects. M-LDS. Breen state III.



340. 1807 S-271 R1 VF20. Comet Obverse. Double Profile. Five points sharper but there is a small, light rim bruise before the throat, another at the first S in STATES, and some light nicks scattered over both sides. Glossy steel brown with dark olive brown toning in protected areas. MDS. Breen state IV early. The Comet break behind the head is outlined and just starting to rise, but it is not strong. A clear double profile shows from the jaw to the throat. Removed from an ANACS slab graded EF40 corroded (ANACS label included, and it shows the attribution).



341. 1807 S-271 R1 VG7. Comet Obverse. Slightly sharper with dull contact marks on both sides, mostly in the centers, plus a small rim dent at the first T in STATES. Glossy chocolate and reddish brown. M-LDS. Breen state VI. The date and legends are bold and the "Comet" break is strong. Ex John Pijewski.



342. 1807/6 S-272 R4+ G5. Overdate Small 7 over 6. The obverse is barely G5 but the reverse is better by a point or two. The date is complete and strong, and the overdate is obvious. LIBERTY is weak, only the lower half still visible, but the reverse legends are complete and clear. The surfaces do show some very light roughness, mostly on the left half of the obverse. No verdigris, and the only notable contact mark is a short pinscratch from the top of the hair ribbon into the hair at right. Rather glossy dark steel brown and chocolate. Ex John Pijewski.



343. 1809 S-280 R2 VF25. Five points sharper but lightly cleaned and retoned glossy chocolate and medium brown, the reverse a few shades lighter than the obverse. Traces of very faded red show in a couple of the protected areas where flowline luster also remains. The only notable marks are a small spot of very light corrosion on the rim under the ribbon end, a tiny rim bruise over the O in OF, and a thin nick over the T in CENT. Decent for the grade in spite of the minor defects, and the obverse is especially attractive. MDS.

346. 1810 S-283 R2 VF25+. Ten points sharper but covered with microscopic contact marks, none visible without a good glass but too many to ignore, and there is a small rim dent at OF. The area at the bust tip, including the 18 and first 2 stars, is not fully struck. Similar weakness is evident in the opposing area at STATES. The rest of the strike is decent, and it appears the dies were out of parallel alignment. (The Green plate coin for the earlier die state shows a similar strike.) Glossy light olive and chocolate brown. E-MDS. Green state II.



344. 1809 S-280 R2 G6. The obverse is very slightly weaker while the reverse is a bit stronger. Glossy chocolate and dark steel brown. No roughness or verdigris, only minor contact marks. The notable marks are a few dull, light rim nicks on the right side of the obverse and a collection of small nicks on the lower left portion of the reverse. The date is bold. MDS.

347. 1810 S-283 R2 VF30. Sharpness near EF40 with some roughness at the dentils left of stars 2-5, including a small dig near the rim close under star 2. Otherwise free of contact marks or corrosion. Glossy dark steel brown and chocolate with some medium brown mixed in on the reverse, possibly retoned long ago. There are traces of dark crud, possibly lacquer, in some of the protected areas, mostly on the reverse. Late die state. Green IV. Flowline luster covers the protected areas on both sides.



345. 1810 S-282 R2 VF35 (PCGS slabbed as EF45). Glossy chocolate and steel brown with frosty flowline luster covering the protected areas on both sides. No roughness or verdigris, only trivial contact marks, including a nick on star 2 and a few tiny scratches on the throat. E-MDS, Green state II. The reverse is rotated 15 degrees CW and slightly misaligned to K-1 while the obverse is properly centered on the planchet.

348. 1810 S-285 R2 G6. Misaligned Obverse. Very lightly burnished, now nicely retoned glossy chocolate brown with hints of light bluish steel overtone. Smooth, corrosion-free surfaces. The only marks are some light rim bruises on both sides. Late die state with the obverse badly misaligned to K-10.5 while the reverse is properly centered. Ex Sam Thurman, Jr.



349. 1811/10 S-286 R3 VG10. Overdate 11 over 10. Very attractive glossy chocolate brown. There is some extremely faint roughness in the field behind the head and at D-ST, but overall the surfaces are quite nice, nearly choice for the grade. The only marks are a small planchet void over the second 1 in the date and a tiny nick left of the O in ONE. MDS. Breen state I. The overdate is clear.



350. 1811/10 S-286 R3 VG7. Overdate 11 over 10. Very attractive glossy chocolate brown with steel brown highpoints. Smooth surfaces, the only notable defects being a pair of small, shallow dents at the bottom edge of the wreath ribbon. MDS. Breen state II. The date is strong and the overdate is bold. A nice lower grade example of this scarce overdate variety.



351. 1811 S-287 R2 VF25. Ten points sharper but there are some tiny pitmarks scattered around the date and lower stars, and specks of greenish verdigris can be found in some of them. It takes a glass to find any of these pits, and the naked eye look of this cent is quite nice. Glossy chocolate and steel brown. MDS. Breen state III.

BROADSTRUCK 1812 S-288



352. 1812 S-288 R2 VF25. Large Date. Sharpness EF40 or better but the rims and highpoints are covered with faint hairline scratches. All these marks are blended perfectly into the frosty dark steel brown toning, and the naked-eye look of this piece is excellent. The surfaces are covered with satiny mint frost. The only notable mark is a small planchet void or depression on the rim at star 13, as struck. LDS. Breen state III. Has the odd look of a broadstruck piece, and the diameter is a slightly oversize 29.0 millimeters.



353. 1812 S-289 R1 VF25+. Large Date. Choice glossy chocolate brown. No defects and great eye appeal for the grade. MDS. Breen state III. Attractive flowline luster covers the protected areas on both sides.



354. 1813 S-292 R2 VF25 (NGC slabbed as EF45BN). Glossy dark olive brown with lighter steel brown highpoints. Frosty flowline luster covers the fields and protected areas on both sides. No roughness, verdigris, or marks. LDS. Breen state V. The attribution is noted on the NGC label.



355. 1813 S-292 R2 EF45+. Lustrous dark steel brown mottled with some olive and chocolate tones, especially on the reverse where frosty light brown shows in protected areas. Great luster gives this piece mint state eye appeal, but the uneven toning is a distraction. The notable marks are a couple small spots of dark reddish chocolate at the eye and another at the wreath below RI in AMERICA. Very little wear and no roughness or significant contact marks. LDS. Breen state V.

356. 1813 S-293 R2 VG8. Slightly glossy dark steel brown and chocolate. The surfaces are decent but not perfectly smooth and there are a couple nicks over star 7. LDS. Struck slightly off center to K-11 and the strike is uneven, weak at the upper left and lower left but normal elsewhere. An odd-looking example, similar in appearance to the plate coin for Breen's die state 1.



357. 1814 S-294 R1 VF30. Crosslet 4. The obverse sharpness is EF45 or slightly better while the reverse is weaker and was burnished between ONE and CENT, the burnishing heavy enough to leave a slight depression on either side of the center dot. In addition, there was some smoothing over ST and a group of light contact marks show at F-A. Both sides were very lightly whizzed and nicely retoned glossy dark chocolate brown. Nice eye appeal in spite of the defects. MDS.



358. 1814 S-294 R1 VF20. Crosslet 4, Off Center. Attractive glossy dark chocolate brown with lighter steel brown highpoints. No roughness or verdigris. The only notable marks are a dull nick under the eye and another in the field just right of star 3. E-MDS. Breen state 1. Struck 10% off center to K-4.5. Removed from a PCGS slab graded VF25 (PCGS label included, and it mentions the off-center strike).



360. 1814 S-295 R1 VF25. Plain 4. Ten points sharper but recolorer glossy dark steel. The surfaces are smooth and show only trivial contact marks, none visible without the aid of a glass. E-MDS. Breen state II, with fine die clashmarks that produce what appears to be a double profile to the nose. The obverse is slightly misaligned to K-2 while the reverse is better centered on the planchet. Ex John Pijewski.



361. 1814 S-295 R1 G4. Plain 4. Double Struck, Reverse Brockage Maker. The obverse is better while the reverse is weaker, a result of the imperfect strike(s). Glossy steel brown and chocolate. No roughness, verdigris, or notable marks. EDS. Double struck on the obverse, but the offset between impressions is insignificant and is evidenced only by obvious distortions in the dentils. The reverse displays the characteristic bulging and distortion seen on pieces that were struck against a blank planchet creating an incuse brockage impression. This cent was also struck slightly off center to K-10. Curious—and probably expensive.



359. 1814 S-295 R1 EF40+. Plain 4. Choice glossy dark chocolate brown with frosty flowline luster covering the protected areas, especially on the reverse. Great eye appeal. The only mark, and it is barely visible, is a very light scratch in the field right of star 5. LDS. Breen state XII.

362. 1808-1814 cent Counterstamped "S. HOOPS in an incuse rectangle Basal State-1. The host coin is worn out, but the counterstamp is solid and would grade F-VF by itself. Glossy dark steel brown and chocolate. This stamp is not listed in Brunk, but it appears old. And there is no evidence suggesting a connection to basketball, although Del may want to find some.



363. "1815" Made from an 1813 S-292 with the date altered to 1815 EF40. Five points sharper with some faint contact marks inside the wreath, none significant, and a light rim bruise at the first A in AMERICA. Attractive frosty medium brown with chocolate toning on the highpoints. Has a great look, and a wonderful S-292 was sacrificed. The alteration is well done and the "5" is perfectly formed.



364. "1815" Cast copy of 1813 S-292 with the date altered to 1815 VF30. Glossy light chocolate brown. A dull, light scratch from the cheek to the hair over the E in LIBERTY and a nick at the peak of the first I in the date are the notable defects. The date alteration was accomplished with exceptional skill and is highly deceptive, the best this cataloger has seen. Ex George Ramont 2/17/95-Jules Reiver.



365. 1816 N-2 R1 MS60+. An attractive example most likely from the Randall Hoard. Frosty light steel brown with delicate overtones of sea green on the reverse and 10% of the original mint red remaining, mostly on the obverse. A nick on the neck and a few other small ones in the field before the portrait are the only defects. No spots or stains. MDS. Excellent eye appeal.



366. 1816 N-4 R2 VG7. Obverse Brockage. Several points sharper but there is a large "X" scratched on the obverse intersecting at the earlobe with both lines passing more than halfway across the planchet. Otherwise the surfaces are smooth and quite nice for the grade, and the scratches are old and toned consistent with the rest of the cent. Glossy medium brown and chocolate with dark chocolate toning in protected areas. MDS. This is an obverse brockage strike, the "reverse" being an incuse impression of the obverse when that side was struck against the obverse of a previously struck cent that failed to eject from the press rather than the reverse die. The incuse brockage impression is fully impressed and is rotated about 30 degrees relative to the normal obverse side.



367. 1816 N-5 R3 G4+. Double Struck Obverse. The obverse is slightly better, the reverse weaker. Glossy dark chocolate with lighter steel brown highpoints. No roughness, a pincscratch in the leaves under OF-AM being the only significant mark. Double struck. The first strike was off center by about 20% and the reverse on that first impression apparently was against a blank planchet rather than the reverse die as no trace of the first reverse strike is visible. The partially struck cent was then restruck properly leaving strong undertype covering the lower third of the obverse, including LIBERTY at the bottom of the bust. The date is weak as a result, but it is still readable with some effort.

368. 1816 N-6 R2 AU55. Very attractive lustrous steel brown and chocolate with hints of frosty light bluish steel in protected areas. The only marks are a very light nick in the field just off the tip of the nose and a thin nick over the right top of the N in ONE. Just a trace of very light friction on the highest points from mint state. M-LDS. The edge shows fine but clear raised reeding from star 4 to star 7, a condition sometimes found on this and a few other varieties of 1816 cents.



369. 1816 N-9 R3 EF45 (NGC slabbed as AU58BN). Frosty dark bluish steel and chocolate with traces of lustrous light steel brown in protected areas. Virtually flawless except for some short scratches at the dentils over TED extending down into the upper parts of those letters. MDS. The attribution and Reiver provenance are noted on the NGC label. Ex Del Bland 11/7/73-Jules Reiver, Heritage 1/24/06:19693.

372. 1817 N-4 R3 VG7. Reverse Brockage. Very slightly sharper but there are some minor contact marks around ONE CENT. Otherwise the surfaces are smooth and quite attractive. Glossy light chocolate brown. EDS, which suggests this piece was struck during the N-4 die marriage rather than during the later N-14 marriage. There is no rotation between the normal and incuse (brockage) impressions, and the strike was very slightly off center to K-1.5. Ex Chris McCawley 1/7/89-Sam Thurman, Jr.



370. 1817 N-1 R4 VF35. Five points sharper with a thin diagonal nick close over the inner hairpin and a patch of fine reddish roughness on the F in OF. Frosty dark steel brown and chocolate with flowline luster showing in the protected areas. Late die state showing a die crack from the tip of the coronet to the dentils left of star 6 in addition to the earlier one from the bust tip to the dentils under star 1.

373. 1817 N-9 R2 EF45+ (NGC slabbed as MS61BN). Frosty steel brown and chocolate with underlying lustrous lighter brown in protected areas. A bit dull from a thin layer of natural oxidation that could be brushed away, but the underlying luster still shows through. Only trivial contact marks. Close to AU50. MDS. The attribution is noted on the NGC label.



374. 1817 N-9 R2 VF25. Five points sharper with a few light rim bruises, including a tiny one under the second 1 in the date and a couple more at D-S on the reverse. Glossy chocolate brown with frosty flowline luster covering the protected areas. MDS.

371. 1817 N-3 R2 G4. Reverse Brockage. Several points sharper with 5 or 6 old, fine pin scratches inside the wreath, all blending perfectly with the natural toning. In addition, the planchet is slightly bent causing excess wear at NE in ONE to F-A. Otherwise the surfaces are smooth and free of significant defects. Glossy chocolate brown. EDS. This is a reverse brockage strike, and there is no rotation between the normal and incuse impressions.



375. 1817 N-15 R4 VF25+. Choice glossy chocolate and olive brown with frosty flowline luster in protected areas. Smooth and quite attractive, a light rim bruise at star 13 the only defect. MDS.



376. 1817 N-16 R1 EF45. Sharper by at least 5 points but lightly cleaned and nicely retoned glossy chocolate and steel brown. The obverse is a shade or two lighter than the reverse. The only marks are a spot of very fine carbon at the dentils right of star 13 and traces of an old fingerprint in the field at stars 10-12. Nicely struck E-MDS, before the small rim cud break at AM. Excellent eye appeal.



377. 1817 N-16 R1 VF25. 15-Star Obverse. Frosty reddish chocolate brown with lighter brown in protected areas of the reverse. No defects other than trivial nicks. E-MDS with a small cud break at AM.

378. 1818 N-1 R2+ MS60+ (NGC slabbed as MS64BN). Lustrous bluish steel brown with 15% of the mint color remaining. There are some light nicks on the top of the first 8 in the date, a few more off the bust tip, and a spot of darker toning in the field under the chin. LDS with strong crumbling in the dentils at star 3 nearly up to star 5. Die chatter doubling shows on the right edge of the portrait, including the ear and LIBERTY.



379. 1818 N-1 R2+ VG7. Off Center. Glossy chocolate brown with lighter steel brown toning covering the devices. No roughness or notable marks. MDS. Struck 15% off center to K-12.5.



380. 1818 N-1 R2+ G4. Off Center. Sharpness VG8 with a dozen thin old pinscratches on the obverse and strong cuts in an oval shape surrounding ONE. Slightly glossy dark chocolate with lighter steel brown highpoints. The date and legends are clear. Struck 5-10% off center to K-1. Ex Sam Thurman, Jr.

381. Group of 14 Cents, 1818-1848. Includes 1818 (2), 1820, 1822, 1824, 1830, 1831 (2), 1834, 1837, 1838, 1846, 1848, and one without a readable date. Grades range from Fair to VG, average AG3. Lot of 14 coins.



382. 1818 N-5 R3 EF45+. Choice glossy chocolate brown with underlying frosty light brown showing through in the protected areas. Virtually perfect except for a few small spots of extremely fine carbon dust, the largest of these at the top of the first 8. If not for the few minor spots this piece would have mint state eye appeal. M-LDS.



383. 1818 mixed with medium brown tones on both sides, especially on the reverse. The surfaces are satiny and the only significant contact marks are a couple long, very light nicks in the field off the chin. Sharply struck EDS.



384. 1819 N-9 R1 AU50. Sharpness near mint state but there is a small spot of microscopic roughness in the field over the tip of the nose and another at the upper point of star 13. Lustrous dark steel brown and chocolate with traces of golden tan faded down from mint color on both sides, mostly on the reverse. A streak of darker toning from the base of E in ONE to the bottom of the first A in AMERICA is the best identifying mark. The surfaces are satiny and the eye appeal is quite nice. M-LDS. The repunching at the top of the R in AMERICA is weak but still visible.

1820 N-10 EX HOMER DOWNING,
WILLARD BLAISDELL. DEL BLAND,
TED NAFTZGER, WALTER DUDGEON, DOC LEE



385. 1820 N-10 R2 AU58. Large Date. Frosty steel brown and chocolate with lustrous lighter steel brown in protected areas. No defects, just a touch of rub on the highest points from mint state. MDS with the reverse rotated 30 degrees CCW. Graded MS60 in the Noyes census, his photo #20082. Comes with a nice provenance. Ex Homer K. Downing 4/5/48-Willard C. Blaisdell 9/76-R. E. Naftzger, Jr.-Del Bland 4/83-R. E. Naftzger, Jr.-1989 EAC Sale, lot 236-Walter Dudgeon, McCawley & Grellman Auctions, Inc., 7/30/94:43-Dr. Wallace Lee, Superior 5/25/03:656.



386. 1820 N-12 R3 AU50. Large Date. An attractive, lustrous mint state cent that has tiny graffiti scratched into the field before the mouth, a few even lighter ones down the neck, and some more over the N in ONE. Otherwise this cent is choice. Lustrous light bluish steel brown with traces of slightly faded mint color remaining on the reverse. Nicely struck MDS. The lump over star 4 is clear. Ex Walter Dudgeon, McCawley & Grellman Auctions, Inc., 7/30/94:45-Dr. Wallace Lee, Superior 5/25/03:658.



387. 1820 N-13 R1 MS60. Large Date. Frosty medium brown and chocolate with a splash of reddish chocolate toning at the top of STA. The surfaces are satiny and the only contact marks are a pair of light nicks high on the cheek. Nicely struck MDS, the usual Randall Hoard die state.

388. 1820 N-14 R5- G5. Large Date. Sharpness F15 but dull with uniform granularity. No verdigris. Some sharp nicks inside the wreath are the only notable marks. Very dark olive and steel with lighter brown highpoints. The 2 in the date is weak but everything is readable.



389. 1821 N-2 R1 EF40 (NGC slabbed as AU55BN). Glossy chocolate and steel brown with frosty lighter brown in protected areas and a small area of darker olive brown toning between the date and star 13. No roughness and only minor contact marks, including some ticks over the 8 in the date and other small pinpricks on the lower part of the bust, plus a light diagonal nick in the field right of star 4. Nicely struck MDS. Doubling from die chatter shows on stars 2-13, along the top of the hairbuns, and over most of the reverse. In many places the doubling is rather pronounced.

390. 1822 N-9 R5- G6. Sharpness close to VG7 but there are some faint scratches at LIBERTY and around the ear, none visible without a glass. Otherwise very nice for the grade. Glossy medium brown with olive toning in protected areas. A small rim nick at star 12 is the best identifying mark. EDS. Ex Pacific Coast Auction Galleries 2/24/89:23-Phil Moore 4/92-Paul Delfeld-Superior 2/05:1361.

391. 1822 N-13 R5 AG3. Sharpness VG8 but covered with fine to moderate roughness. There is shallow greenish verdigris in protected areas, a planchet flake at the right top of the 1 in UNITED, and a dull rim nick over the left edge of that D. The date and legends are complete and clear. Ex M&G Auctions 8/17/96:331-Colonel Steven Ellsworth collection.



392. 1823 N-2 R2 VG7. Nice glossy chocolate and steel brown. Smooth surfaces showing only a few trivial signs of contact, none notable. Late die state with a rim cud extending inside the dentils at stars 5-6. A choice low grade example.



393. 1824/2 N-1 R1 VF35. Overdate 4 over 2. Sharpness EF40 with some extremely fine roughness on the obverse and traces of verdigris in protected areas, mostly around stars 7-9. Mostly glossy reddish steel brown and chocolate with traces of frosty light steel brown faded down from mint color in protected areas. Flowline luster covers the protected areas on the reverse. MDS. The overdate is clear. Not perfect but still a nice example of this popular overdate.

394. 1824/2 N-5 R4+ G6 (PCI slabbed as VF20). Overdate 4 over 2. Sharpness F12 or so but dark and lightly corroded. No marks or verdigris. Very dark steel. The date and legends are clear, and the overdate is obvious.



395. 1825 N-4 R3 VF30 (NGC slabbed as AU50BN). Glossy chocolate brown with frosty lighter steel brown in protected areas. Smooth surfaces that are free of any hint of corrosion or verdigris. The only marks are trivial and include a pair of small pinpricks in the field before the neck and another under the end of the wreath ribbon. LDS with doubling on the reverse from die chatter (bounce). The attribution and Reiver provenance are noted on the NGC label. Ex George Ramont 10/5/75-Jules Reiver. Heritage 1/24/06:19841.



396. 1825 N-6 R3 VF25. Five points sharper with a nick on the jawline and a couple weaker ones on the throat. Glossy steel brown with darker olive brown toning left of star 4 and at the top of the reverse. MDS. Nice eye appeal for the grade in spite of the few marks.



398. 1825 N-10 R3 VF20. Ten points sharper with minor roughness in the fields and protected areas. No verdigris or marks. Glossy dark chocolate with medium brown highpoints. Nicely struck EDS. Ex Bruno Crossfield-Willard C. Blaisdell-Del Bland-Stuart A. Hodge.



397. 1825 N-8 R3 AU50. Sharpness close to mint state but lightly cleaned and retoned glossy dark steel brown and chocolate. No roughness or marks other than some microscopic planchet flakes scattered about the obverse fields, mostly near the dentils, and a small planchet flake just right of the D in UNITED, plus a tiny horizontal nick over the T in CENT. Nicely struck MDS.

399. 1826 N-1 R2 MS60. Lustrous chocolate and bluish steel delicately mottled with some frosty lighter brown. Excellent eye appeal. The only marks are a tiny, microscopic scratch in the field just off the tip of the nose and a light nick in the middle of the jawline, plus a hint of reddish toning on the 6 in the date. M-LDS with a small but strong rim cud over star 6. Struck slightly off center to K-3.

400. 1827 N-5 R2 VF25. Glossy chocolate and medium brown. Smooth surfaces, a few tiny marks on the rim over OF the only notable defects. MDS.

RARE 1827 N-6 WITH RETAINED CUD



401. 1827 N-6 R3 G5. Sharpness F12 but lightly corroded with verdigris in protected areas. A nick on top of the E in ONE is the only mark of any consequence. Dark olive with chocolate brown highpoints. The date is bold and the legends are complete. Nothing special except for the die state, which is extremely rare. Late die state with a sunken retained cud break under the date.



402. 1827 N-8 R3 EF40 (NGC slabbed as N-6 grading AU55BN). Slightly sharper but lightly cleaned and retoned frosty chocolate with underlying golden brown on the obverse and hints of very faded mint color in protected areas of the reverse. A small spot over star 2 and another over star 13, plus a few minor nicks on the cheek and neck are the only notable marks. MDS.



403. 1827 N-10 R4+ G5. A few points sharper but there is a rim dent at D-ST. Dark olive with coppery tan highpoints from a light cleaning. Faint granularity covers the fields and protected areas on both sides. The date and legends are clear.

404. 1827 N-10 R4+ G4. Very slightly sharper but there are two small punchmarks in the field before the upper lip and another at the earlobe, plus a rim dent at star 6. Glossy mix of chocolate, light olive, and reddish brown. Smooth, corrosion-free surfaces showing a clear date and legends.



405. 1827 N-11 R1 EF45+ (NGC slabbed as AU58BN). Frosty light to medium brown with darker steel brown toning on the highpoints. The only marks are a couple small spots of darker toning (not carbon) in the field at the chin and a few more tiny ones at the dentils off the end of the wreath stem. Nicely struck E-MDS. Close to AU50.

406. 1827 N-12 R5 AG3. A point or two sharper but covered with light corrosion, and there are traces of verdigris in a few of the protected areas. No significant marks. The date and legends are complete and easily readable, but the date is not strong.



407. 1828 N-6 R1 AU50. Sharpness closer to mint state but dipped and retoning frosty bluish steel brown with lighter steel brown toning in protected areas of the reverse. No spots, stains or notable marks, although there are a few tiny ticks mixed in with the usual small lumps caused by die rust. LDS with all the fine obverse die cracks mentioned by Wright.

408. 1828 N-9 R4 F12. Sharpness VF25 with minor roughness on both sides, strongest along the left edge of the reverse. No verdigris or contact marks. Slightly glossy chocolate and steel brown with darker chocolate in protected areas. EDS. Ex Jack Beymer 8/78-Gené Williams 5/96-Colonel Steven Ellsworth collection.



409. 1829 N-4 R4 VF20. Frosty steel brown with small spots of darker steel brown toning in the field before the portrait. Satiny mint luster covers the protected areas, especially on the reverse where the surfaces are consistent with a cent grading at least EF40. In fact, there is very little wear on either side, but the usual weak strike makes grading very difficult. LDS. The radial die crack through R in AMERICA is strong and all the dentil crumbles mentioned by Wright are obvious.



410. 1829 N-5 R3 VF35. Small Letters Reverse. Five points sharper but there are some faint hairlines on the obverse. No spots, corrosion, or verdigris. A couple tiny, very light contact marks in the field close off the chin are the notable marks, and they are barely visible. The eye appeal is excellent, and the satiny surfaces are wholly consistent with a piece grading at least 10 points higher. I suspect this cent is nearly as sharp as it was when struck, but once they turn brown it's difficult to grade them higher than the strike sharpness dictates. In fact, there are peeps of faded mint color remaining in protected areas of the reverse. Frosty steel brown and chocolate with some lighter steel brown in protected areas, in addition to the aforementioned faded mint color. M-LDS. Tied for CC#11.



411. 1830 N-4 R2 EF45. Glossy chocolate and dark steel brown with frosty tan faded down from mint color covering protected areas on the reverse. Frosty luster shows in protected areas on both sides. MDS. A double profile shows on the forehead thanks to die bounce.

RARE LATE DIE STATE 1830 N-4



412. 1830 N-4 R2 G5. A point or two sharper with minor roughness scattered about the obverse, including a few shallow pits near the dentils right of the date, at the rim between stars 3 & 4, and at the hair under star 8. Slightly glossy steel brown with darker olive and steel toning in protected areas. The date and legends are complete and clear. Extremely rare late die state with a sunken retained cud break under the date extending beyond the date on both ends.



413. 1830 N-4 R2 VG8. Off Center. A couple points sharper with some thin nicks at stars 1-4 plus a few other minor contact marks on both sides. Glossy steel and chocolate brown. Struck 20% off center to K-4 leaving the lower half of the date off the planchet. Ex Chris McCawley 1/7/89-Sam Thurman, Jr.



414. 1830 N-6 R4 VF20 (PCGS slabbed as VF20). Small Letters Reverse. Glossy reddish brown and chocolate with darker chocolate and olive brown toning in protected areas. The only marks are a couple faint hairlines on the cheek. EDS. The strike is better than normal for the variety, the top of the head and buns showing only minor weakness. The surfaces are covered with a thin layer of natural oxidation that could (should?) be brushed away, and I suspect the eye appeal would improve if the underlying gloss was exposed. Ex Pete Boisvert-Henry T. Hettger.



415. 1830 N-7 R3 VF25. Five points sharper with a nick in the field left of star 12 and a trace of microscopic roughness at the T in CENT. Otherwise the surfaces are quite attractive for the grade. Glossy medium brown and chocolate with hints of reddish chocolate toning on both sides.



416. 1830 N-10 R4+ G4. Slightly sharper but covered with light contact marks plus a stronger curved scratch on the cheek. Mostly glossy chocolate with darker olive steel toning in protected areas. The date is strong and the legends are complete. M-LDS with a retained cud break over ATES, the section over AT raised more than the rest.

417. 1830 N-10 R4+ VF30. Very attractive glossy chocolate and olive brown with frosty luster showing in protected areas. There are a few small nicks in the field right of star 3 and a barely visible rim bruise at the bottom of the reverse. Excellent eye appeal. EDS. The die crack at ATES is very light. Called VF30 in both census lists, CC#4 in the Bland census and CC#10 in the Noyes list, his photo #22158. Comes with a nice provenance. Ex Bill Bright 2/84-Doug Bird-Dr. Phil Ralls-Dennis Mendelson. Superior 2/3/91:403-J. R. Frankenfield. Superior 2/17/01:947-Chris McCawley-2003 EAC Sale, lot 649-Steve Ellsworth 3/22/05-Daniel W. Holmes, Jr.



418. 1830 N-11 R5 G5. Sharpness F12 but granular. The roughness is not severe but there is a small patch of fine verdigris in the field over the bust tip, another under EN in CENT, and a third at the tops of IT in UNITED. No notable contact marks. Slightly glossy very dark olive and steel. The date and legends are complete and the attribution points are obvious.

419. 1831 N-2 R2 VF30 (NGC slabbed as AU55BN). Small Letters Reverse. Glossy dark bluish steel and olive brown with frosty flowline luster covering the fields and protected areas. No roughness or verdigris, but the color may not be original. The only marks are a faint hairline scratch along the bottom edge of ONE with another diagonal one through ENT. MDS. The attribution and Reiver provenance are noted on the NGC label. Ex George Ramont 8/5/69-Jules Reiver. Heritage 1/24/06:19943.

420. 1831 N-3 R1 VF30. Small Letters Reverse. Five points sharper with a few too many light contact marks for the higher grade, none notable. Glossy chocolate brown and olive with frosty lighter steel brown toning in protected areas of the reverse. MDS.



421. 1831 N-5 R4 F15+. Small Letters Reverse. Close to VF20 but there is a fine diagonal scratch through the E in CENT and another well hidden in the wreath below ITED. Otherwise the surfaces and eye appeal of this cent are excellent. Glossy medium brown with olive brown in protected areas. MDS. Ex Bowers & Merena 11/18/94:3466-Colonel Steven Ellsworth collection.

422. Trio of Cents, 1831-1852. Includes 1831 N-6 LDS grading F15+, 1841 N-5 LDS (d) grading F15, and 1852 N-14 LDS (e) grading VF30. A couple are very slightly sharper with minor defects but all three are decent for the grade. Lot of 3 coins.

423. 1831 N-8 R3 G5. A point sharper but there are two dull rim nicks at star 13 and a couple more at stars 4 & 5. Slightly glossy light chocolate with darker olive brown in protected areas. The date and legends are complete and clear. Rare M-LDS with a slightly raised retained cud break at D-S.



424. 1831 N-9 R2 VF35. Large Letters Reverse. Sharpness near EF40, especially on the obverse, but there is a very faint scuff of hairlines at the date and traces of loose dirt caked into protected areas of the reverse. Glossy dark chocolate brown with frosty lighter brown toning in protected areas. There is a light nick on the left side of the D in UNITED, another in the leaves below that letter, and a light rim nick over the E in AMERICA. Rare M-LDS with a slightly raised retained cud break outlined by two parallel die cracks between stars 4 & 5 turning to the dentils at star 5.



427. 1831 N-12/3 R5 VG7+ (PCGS slabbed as VG8). Harpooned Whale. Double Profile. Slightly glossy steel brown with chocolate brown in protected areas. No roughness or verdigris, and the only notable marks are very light rim bruises at stars 2 & 10. The date and legends are complete and clear. Very close to the PCGS grade of VG8. LDS with a huge cud break covering all but the upper point of star 13 (the harpoon sticking out of the whale) and the lower 3 points of star 12 **except** for the tip of the lower left point, which sticks out from the cud. Sometimes called the 7-point cud die state. In addition, there is a clear double profile (caused by die bounce) from the forehead down to the middle of the neck. The cud break is noted on the PCGS label.



428. 1831 N-12/4 R4 AG3. Terminal Die State/Harpooned Whale. Sharpness G6 or better with a half dozen dull dents in the center of the portrait and at the opposing area around CENT. Glossy dark steel brown. Terminal die state with a huge cud break covering all of star 13 except for its upper point (the harpoon sticking out of the whale) plus the lower three points of star 12, including the tip of the lower left point of that star. Sometimes called the 8-point cud die state. Ex Tom Reynolds 3/14/85-Sam Thurman, Jr.



425. 1831 N-12/2 R6 VG7. 3-point cud on star 13. Partial Double Profile. Slightly sharper but lightly cleaned and nicely retoned glossy dark chocolate and olive brown. No roughness and only minor marks, including a small dig just off the bust tip and a light rim bruise at the bottom of the reverse. LDS with a cud break covering the lower three points of star 13 down to the rim below. Thin but clear doubling from die bounce is visible on the lips, chin, and neck.

429. 1832 N-3 R1 F15+. Off Center. Sharpness VF20 but there is a light rim bruise at the first T in STATES and another off the stem tip. Otherwise the surfaces are smooth and show only minor marks consistent with the grade. Glossy medium brown with chocolate highpoints and a couple small splashes of reddish chocolate around star 1. MDS. Struck 15% off center to K-4. Ex Michael Arconti, Superior 7/27/03:115.

426. 1831 N-12/2 R6 Fair-2. 3-point cud on star 13. Sharpness G5 with 10 strong, dull punchmarks around the portrait and 8 more scattered about the reverse. These dents are strong enough to cause obvious bulges on the opposite side of the planchet. Otherwise the surfaces are smooth and problem-free. Glossy light chocolate brown. The date is weak but readable and the all-important 3-star cud break at star 13 is strong. Ex Sam Thurman, Jr.

430. 1833 N-4 R4 VG10. So-called 3 over 2 Overdate. Very slightly sharper but there are too many small marks for a higher grade, including a minor rim bruise at ER in AMERICA. Glossy medium brown and chocolate. E-MDS.



431. 1833 N-6 R1 AU50. Double Profile. Lustrous chocolate brown with hints of bluish steel overtone on both sides and 10% of the original mint color remaining on the reverse. The only defect is a very light, thin scuff near the dentils just right of the date. MDS with a clear double profile from the tip of the coronet down to the lower half of the neck, and portions of the profile show triple outlines.

432. 1833 N-6 R1 VF30. Glossy steel brown with frosty light brown toning in protected areas and slightly darker steel toning on the highpoints. No spots, stains, or notable signs of contact. LDS.



433. 1834 N-3 R1 AU55. Large 8 with Small Stars. Lustrous golden tan with steel brown highpoints and hints of bluish steel overtone on the reverse. Just a touch of friction on the obverse highpoints from mint state. LDS. The reverse is rotated 30 degrees CW. Removed from an NGC slab graded MS62BN (NGC label included).



434. 1834 N-5 R5+ F12+ (NGC slabbed as VF30). Large 8 & Stars with Medium Letters. Glossy steel brown and chocolate, the reverse delicately woodgrained with slightly lighter and darker shades. Smooth and attractive, a thin diagonal nick over star 11 the only notable mark. There is some doubling on the profile at the forehead, lips, and chin due to die bounce. A very attractive example of this popular "Redbook" variety. Close to F15.



435. 1834 N-5 R5+ VG8. Large 8 & Stars with Medium Letters. Sharpness F12 or slightly better but covered with microscopic porosity everywhere except the highpoints, which are smooth. There is some inconspicuous reddish brown verdigris in protected areas of the reverse. The only marks are a small pinprick in the dentils over star 7 and a barely visible rim bruise at the T in UNITED. The date and legends are complete and clear. MDS. Ex John D. Wright 7/84-Dennis Mendelson 11/26/86-Jim Corrado.

436. 1834 N-5 R5+ AG3. Large 8 & Stars with Medium Letters. Dark steel brown and chocolate. Sharper but rough. No verdigris, but there is a dull scuff over star 13 and some small rim bruises on each side. The date is weak but easily readable and the legends are complete.



437. 1835 N-4 R4+ VG8. Double Profile. A point or two sharper but there are too many tiny nicks for the higher grade. Mostly glossy dark olive and steel. MDS showing a fine double profile from the forehead down to the chin. Ex Floyd T. Starr, Stack's 12/4/84:1719-Jack Robinson, Superior 1/29/89:1037.



438. 1835 N-7 R1 AU50. Head of 1836. Lustrous steel brown and chocolate with faint hints of very faded mint color in a few protected areas. A spot of reddish chocolate verdigris on the second T in STATES is the only defect. Excellent eye appeal, the obverse looking closer to mint state. M-LDS. Newcomb's old #17.



439. 1835 N-9 R4+ F12. Large 8 & Stars. Off Center. Slightly sharper but cleaned and retoned a rather glossy dark reddish olive and steel. The fields and protected areas are covered with microscopic roughness, but the roughness is not apparent to the unaided eye. No verdigris or marks. EDS. Struck 15% off center to K-7.5. Removed from a PCGS slab graded VF30 (PCGS label included, and it mentions the off-center feature). Ex 2002 ANA Sale, Superior 8/1/02:2523.

440. 1835 N-9 R4+ VG10. Large 8 & Stars. Glossy medium brown and chocolate. Choice except for a half dozen small rim cuts on the reverse. EDS, the reverse uncracked.

441. 1835 N-9 R4+ F12. Large 8 & Stars. Sharpness VF20 but covered with fine to moderate granularity that's offset a bit by rather glossy chocolate brown toning. No verdigris or contact marks. There is a depression at NITED that includes some pitmarks, but the depression itself appears to be as struck. Extremely rare terminal die state with a large, strong cud break connecting stars 10 & 11 to the rim at right in addition to the earlier one joining ERICA to that rim. The reverse is rotated 150 degrees CW. CC#2 of only 3 known in the terminal state. The obverse cud break displays a clear double profile, but the portrait does not. Found on Ebay.



442. 1835 N-10 R4+ F15. Very attractive glossy medium brown with darker olive toning in protected areas. The surfaces are smooth and the obverse is choice for the grade. The reverse is smooth as well but does have a few minor marks, including a shallow planchet flake at the top of ST, another near the dentils under the ribbon loop, a pair of thin horizontal nicks close over the C in CENT, and a dull nick at the right foot of the first A in AMERICA. MDS, the die crack at D-STa strong.



443. 1835 N-10 R4+ VG8. Glossy light chocolate brown with darker olive toning in protected areas. Smooth surfaces, the only notable mark a rev rim bruise. MDS. The die crack at D-STa is strong.

444. 1835 N-11 R4+ G6+. Sharpness VG10 and nearly choice except for a dent on the rim off the stem tip. Looks like a small tab double strike, but maybe not. You decide. EDS.

445. 1835 N-18 R4+ G4. A few points sharper but covered with very fine roughness. Dark olive and steel with lighter steel brown highpoints. The date and legends are complete and clear.



446. 1836 N-1 R1+ AU55. Mint state sharpness but possibly cleaned and retoned lustrous light greenish brown with bluish steel overtones. The surfaces are satiny and the eye appeal remains quite nice, especially on the obverse. No roughness or verdigris. The only marks are a small nick in the hair under the R in LIBERTY and a faint hairline scratch on the neck. LDS.



447. 1836 N-3 R1 EF45+. Attractive glossy medium brown with frosty lighter brown in protected areas. The only marks are a small rim nick right of star 13 and some light nicks over the E in CENT. Excellent eye appeal, close to AU50. EDS, both sides uncracked. Removed from a PCGS slab graded AU55 (PCGS label included).

448. 1836 N-4 R3 VF35. Five points sharper with a few very faint hairline scratches inside the wreath, none visible without the aid of a strong glass. Glossy medium brown and chocolate. M-LDS.



449. 1836 N-5 R3 AU50. Choice lustrous light to medium steel brown. No notable defects. Great eye appeal. MDS.



450. 1837 N-1 R3 AU55. Plain Hair Cord. Lustrous medium brown with a tiny swipe of slightly darker olive brown toning in the field at the chin and spots of darker olive and steel toning at TAT in STATES. Nicely struck EDS with slightly reflective fields on the reverse. Ex Glen Wallace-Ace Reiswig 11/75-Superior 9/7/97:556-Colonel Steven Ellsworth collection.



451. 1837 N-15 R3 VF35. Plain Hair Cord. Five points sharper but there are fine, light scratches covering the cheek. The marks are not visible without the aid of a glass, and this cent offers outstanding eye appeal in spite of the minor defects. Very attractive frosty medium brown. The best identifying mark on this piece is a shallow planchet flake down from the bottom edge of the ribbon loop, as struck. E-MDS



452. 1838 N-1 R1 AU55. Sharpness very near mint state but there is a short scratch between the I & C in AMERICA down into the leaves below. Frosty medium brown with traces of faded mint color in protected areas on the reverse. Very late die state with numerous small rim cud breaks on the obverse and stronger ones on the reverse at ES OF nearly reaching the first A in AMERICA.



453. 1838 N-8 R1 MS60+. Lustrous light bluish steel brown with 10% of the slightly faded mint red remaining on the obverse, 25% showing on the reverse. Close to choice except for microscopic specks of dark crud at the top of the obverse around stars 6-9. M-LDS. Removed from a PCGS slab graded MS64RB (PCGS label included).

454. 1838 N-9 R3 MS62. Phantom Dents on Obverse Rim. Highly lustrous light bluish steel brown. The surfaces are satiny and very attractive. Would rate a higher grade except for a nick on the eye and a small, lightly abraded spot under the U in UNITED. Sharply struck EDS showing phantom dents on the rim from below the 18 clockwise to star 1 (similar to those found on the early state of 38N6).

RARE INTERMEDIATE DIE STATE 1838 N-14



455. 1838 N-14 R4 F15. Sharpness VF25 or slightly better but lightly cleaned and covered with very tiny nicks, none significant but far too many to ignore. Slightly glossy medium steel brown with overtones of light greenish olive in protected areas. Nothing special except for the die state, which is extremely rare. M-LDS with a clear rim cud from star 7 nearly to star 8. Only a few of this die state have been reported, the first known to me being the R. S. Brown, Jr. example sold in his second sale at Superior 1/27/96, lot 662, when the known population was 3 pieces.



456. 1839/6 N-1 R3+ G6+. Overdate 9 over 6. Clipped Planchet. Sharpness F12 or slightly better but lightly corroded with microscopic porosity covering both sides. No verdigris or marks. Slightly glossy dark olive and steel. EDS, before any hint of a crack or swelling on the obverse. There is a curved planchet clip that nearly reaches the bottom of the 9 in the date. Can't recall seeing another mint error on this variety. Ex Sam Thurman, Jr.

457. 1839 N-8 R1 VF20. Head of 1840. Five points sharper with traces of light verdigris dusted onto the right side of the reverse. Glossy chocolate brown mottled with some olive and reddish chocolate on the reverse. MDS.



458. 1839 N-12 R4 Vg8. Booby Head. Sharpness F12 but there are too many small rim bruises for the sharpness grade, strongest at the top of the reverse. Glossy light olive brown with splashes of chocolate on the lower half of the obverse. Late die state with a bisecting die crack on the obverse. Ex G. Lee Kuntz, Superior 10/6/91-490.



459. 1839 N-15 R6- F12. Booby Head. Very attractive glossy medium brown and light chocolate. Smooth surfaces and choice if not for a few light rim bruises, including ones over star 9, under star 12, and at F-A. The attribution points are clear.

460. Trio of Cents, 1839-1843. Includes 1839 N-8 head of 1840 in Vg8, 1842 N-2 small date in F15, and 1843 N-2 in F12. A decent group, no significant defects. Lot of 3 coins.



461. 1840 N-7 R2 AU58 (PCGS slabbed as MS64BN). Large Date. Lustrous medium brown with satiny mint frost in protected areas. No spots, stains, or notable marks. A trace of rub on the highest points from mint state. Nicely struck EDS, die state a. Tied for CC#6.



463. 1841 N-7 R2 AU55 (NGC slabbed as MS62RB). Very attractive glossy light olive and chocolate brown with faded red covering the protected areas. Although the eye appeal is excellent and suggests this is a choice mint state cent, the color is not original. There is a hint of rub on the highest points and a few trivial contact marks, including a nick on the bust tip and a pair of very thin vertical nicks in the center of the jawline. A very shallow planchet flake shows in the field close over the tip of the nose, as struck. Rare late die state, die state c late, with a clear crack from the dentils under star 1 fading out as it reaches the throat and another from star 8 down toward the hair below. CC#3 of those known with the cracked obverse die.



464. 1842 N-4 R2 MS63 (NGC slabbed as MS65BN). Large Date. Very attractive lustrous bluish steel brown with hints of sea-green on the obverse. There are traces of original mint red remaining on the obverse and 40% of the mint color showing on the reverse. Excellent eye appeal and only a few trivial marks. These include a couple microscopic ticks high on the neck under the earlobe, a very light nick left of the O in ONE, and a small splash of darker toning at the dentils over E in UNITED. MDS, die state b. Tied for CC#4.



465. 1842 N-6 R1 AU55+. Large Date. Very close to mint state, and the reverse appears to be solidly at that level, but there are a few too many tiny contact marks scattered about the obverse, none notable. Lustrous steel brown with hints of bluish steel overtone on both sides and traces of faded mint color remaining on the reverse. MDS.



462. 1841 N-1 R5 Proof-58. Proof-Only Variety. Bluish steel brown with 15% of the faded mint color remaining, mostly on the obverse. No spots or stains, but the obverse is covered with microscopic planchet flakes or bubbles from a poorly prepared planchet. The reverse is not so afflicted, and the naked-eye appeal of this cent is excellent. The mirrors are moderately deep. The best identifying mark is a thin, light vertical nick in the field midway between the left points of stars 10 & 11.

466. 1842 N-8 R1 AU50. Large Date. Sharpness closer to mint state but there is a light rim bruise under star 12 and another over the E in STATES. Otherwise free of notable defects. Lustrous medium brown with satiny surfaces. MDS, die state b.



467. 1843 N-4 R1 VF30. Petite Head with Reverse of 1844. Attractive glossy medium brown. A thin nick over the hair bun is the only mark of any consequence. MDS, die state b late, but the rim cud under the date does not show.



468. 1843 N-5 R1 EF45. Mature Head. Five points sharper with a few too many light contact marks for the higher grade, including a small rim nick at star 7, a couple more at TE in STATES, and a nick in the leaves under the first A in AMERICA. Frosty bluish steel brown and chocolate. The fields and protected areas are covered with satiny luster. E-MDS, die state b.



469. 1843 N-17 R6- F12+. Mature Head. Very close to F15 with a few too many light contact marks for the higher grade. None of these marks is at all distracting and the eye appeal of this example is excellent. Glossy chocolate brown with medium brown highpoints.

470. 1844 N-7 R2 EF40. Ten points sharper but cleaned and retoned glossy greenish olive brown and darker steel with a streak of lighter brown toning close over star 13. A thin nick shows left of the ear. MDS, die state b.



471. 1845 N-1 R4 EF45. Sharpness AU55 but there are traces of very light corrosion on the reverse, strongest on the rim over the U in UNITED. Specks of verdigris can be found in protected areas of the reverse as well. The obverse, however, is smooth and quite attractive, just a hint of roughness at the 4 in the date. Steel brown and chocolate, the obverse highly glossy but the reverse less so. EDS, die state a. The obverse fields are slightly reflective. Tied for CC#8.



472. 1845 N-1 R4 EF40. Glossy medium brown with darker steel brown highpoints. No notable defects. Struck very slightly off center to K-5. Tied for CC#10.



473. 1845 N-4 R1 AU55. Reverse Doubling. Mint state sharpness with too many tiny contact marks on the obverse for a mint state cent. The notable marks are a shallow rim nick over the right top of the T in UNITED and a spot of darker toning at the dentils over the second A in AMERICA. Lustrous light to medium brown with traces of mint color remaining on both sides. MDS, die state a. Clear, sharp doubling from die bounce shows on the lower part of the reverse, strongest along the bottom edge of the wreath.



475. 1845 N-9 R2 AU55 (NGC slabbed as MS63BN). Frosty steel brown and chocolate with darker chocolate and olive toning in the most-protected areas. Traces of original mint color remain visible on the left side of the reverse. A swipe of chocolate toning on the jawline and a small spot of similar toning under star 8 are good identification marks. Just a hint of friction on the highest points from mint state. Sharply struck EDS, die state a. Ex Abe Kosoff estate, Bowers & Merena 11/85-216-Dr. Thomas S. Chalkley, Superior 1/28/90,924-J. R. Frankenfield, Superior 2/17/01:1303.

476. Pair of Cents, 1845 & 1848. Includes 1845 N-13 R2 MDS (die state a) VF30+ and 1848 N-28 R1 LDS (die state c) VF30. The second is slightly sharper but lightly cleaned and retoned. Lot of 2 coins.

477. 1845 N-15 R4 VF30. Sharpness near EF40 but there is a thin vertical nick on the jawline, some light nicks around stars 11-13, and three small but sharp rim nicks or cuts at the top of the reverse. Glossy medium brown with a bit of darker steel toning at RTY. MDS, die state b. Ex John Higgins 3/95-Colonel Steven Ellsworth collection.

478. Pair of 1846 Cents. Includes N-9 R2 MDS (die state b) VF35 and N-19 R4 MDS (die state b) VF25. The second is slightly sharper with nicks. Lot of 2 coins.



474. 1845 N-8 R1 MS65 Prooflike. Slightly faded mint red mellowing to steel brown on the highpoints, about 75% of the mint color remaining. The only defects are a few tiny spots of darker toning scattered about both sides, including a small one near the dentils under star 3, another just right of the date, and one hidden at the berry left of the top of the O in ONE. Sharply struck very early die state with extremely fine die polishing lines covering slightly reflective fields on both sides. Great eye appeal. CC#2 behind a slightly finer example.

479. 1846 N-19 R4 MS60+ (NGC slabbed as MS65BN). Frosty steel brown with 10-15% of the mint color remaining. No spots, stains, or notable signs of contact. The surfaces are satiny but not very lustrous due to a thin layer of natural oxidation. A judicious brushing might bring out the underlying luster and improve the eye appeal. MDS, die state b. Tied for CC#6.



480. 1846 Contemporary Counterfeit F12. A struck counterfeit made from transfer dies. The devices are present but their edges are not well defined, which is a function of the dies used, not wear or damage. Struck on a thin planchet that is of a slightly smaller diameter than normal for mature head cents (26.0 millimeters versus the usual 27.5 weighing only 126.6 grains versus the usual 165 or so). The reverse is rotated 130 degrees CCW. Only 7 examples are known. See page 72 of the 2001 edition of the late date cent book for a brief discussion of these counterfeits. Ex Rick DeSanctis, 2002 EAC Sale, lot 587-John Kraljevich, Jr.

481. Pair of Cents with Rim Cuds. Includes 1847 N-3 R3 LDS (die state f, but only the rim cuds at S-O and OF show) VF25 and 1855 N-4 R1 LDS (die state f)F15. The second is sharper with nicks. Lot of 2 coins.

482. 1847 N-6 R1 EF45. Glossy medium brown with hints of faded mint color on the reverse. There are a few light nicks on the cheek and a diagonal nick close under the eye. Rare early die state, die state a, with a dash from repunching left of the base of the 4.



483. 1847/7 N-18 R5 EF40. Repunched date, the so-called 7 over medium 7. Ten points sharper with traces of microscopic corrosion on the reverse, including some powdery verdigris at CE. Perhaps improvable. The only mark is a small rim bruise at ER in AMERICA. Frosty light olive and steel brown. Rare terminal die state, die state d, with strong rim cud breaks at the 1 in the date up to star 2 and another from star 4 to left of star 5.



484. 1847 N-21 R1 AU58. Lustrous chocolate brown with bluish steel overtones on the reverse. The only defect is a small spot of reddish brown verdigris at the end of the chin. Very close to mint state, and the eye appeal is excellent. EDS, die state a.



485. 1847 N-21 R1 MS62+ (ANACS slabbed as MS63RB). Frosty bluish steel brown with 15% of the mint red remaining on the obverse, 35% on the reverse. Very close to MS63 but there are a few too many tiny specks of darker toning for the higher grade. The only notable mark is a small spot of very fine carbon on the lower part of the second S in STATES. MDS, die state b early (Newcomb's old #40). Tied for CC#7.



486. 1847 N-31 R5 VF35+ (NGC slabbed as MS62BN). Choice glossy medium brown and chocolate with traces of satiny luster in protected areas. No spots or stains, and the only mark is a very fine scratch close under CEN. Very close to EF40. LDS, die state d. The reverse die cracks are clear. (This is a very attractive cent, but how the professional slabbers can call this mint state when the wear is obvious is a real mystery to me.)



489. 1848 N-4 R4 VF30. Repunched Date. Ten points sharper but there are patches of microscopic roughness at stars 11-13 extending onto the neck and several faint hairline scratches under CENT. Glossy medium brown with frosty luster in protected areas. E-MDS, die state a. The date repunching is strong.

490. 1848 N-13 R4 VF30. Sharpness EF45 but covered with fine abrasions on the obverse highpoints. No spots or stains. Recolored glossy light to medium brown with dark steel highpoints. MDS, die state a.

491. Group of Five 1848 Cents, all Rarity-5 varieties. Includes N-15 VG10 EDS (a), N-26 VG10 MDS (b), N-30 G4, N-32 G4+ EDS, and N-39 F12 E-MDS. A few are slightly sharper with minor defects. Lot of 5 coins.



487. 1847 N-32 R4 MS62. Very attractive lustrous bluish steel brown with 5% of the red remaining on the obverse, 20% on the reverse. No spots or stains, and this cent would be choice if not for a couple light contact marks on the obverse. These include a few nicks on the bust tip, another horizontal one left of the bottom of the earlobe, and a couple tiny ones in the field under the chin. EDS, die state a. Tied for CC#4.

492. 1848 N-17 R1 MS60. Lustrous medium brown. The fields are smooth and slightly reflective thanks to a fresh die polishing. The notable mark is a spot of darker toning over star 7, and this spot was very lightly abraded to minimize its impact. A tiny spot of similar toning is located at the dentils tips under star 3 and another fainter one is located near the hair under star 8. Nicely struck MDS, die state b.



488. 1847 N-38 R1 AU55. Mint state sharpness but there is a spot of darker olive toning mixed with microscopic traces of shallow verdigris on star 2 and another on the inner point of star 3. The only signs of contact are a couple thin nicks in the dentils at stars 9 & 10. Otherwise the surfaces offer excellent eye appeal. Lustrous medium brown. Nicely struck E-MDS, die state a.

493. 1848 N-23 R3 AU58+ (NGC slabbed as MS65BN). Frosty medium brown with frosty golden tan in protected areas. No defects, just a hint of rub on the highest points from mint state. EDS, die state a. Tied for CC#4. The attribution is noted on the NGC label.



494. 1848 N-23 R3 AU58+. Choice glossy medium brown and chocolate with frosty lighter brown toning covering the protected areas. No defects and choice in every respect, just the barest hint of rub on the highest points from mint state. E-MDS, die state a. Fine die rust shows in the fields near most of the stars. Tied for CC#4 honors with the slightly earlier die state example in this sale. Removed from a PCGS slab graded MS61BN (PCGS label included).

495. 1848 N-26 R5 F12. Glossy medium brown. A bit dirty but free of any notable defects. MDS, die state b.



496. 1848 N-31 R2 MS60. Frosty steel brown and chocolate. The surfaces are satiny and show only a few trivial marks. These include a faint streak of slightly darker toning near the dentils over stars 6-8 and a small spot of olive brown toning at the dentils just below star 11. The surfaces are satiny and the eye appeal is very nice for the grade. E-MDS, die state b. The tops of CE are joined by crumbling but the dentils over the R in AMERICA do not show any evidence of crumbling. Tied for CC#8.

497. 1848 N-32 R5 G5. A few points sharper but the rim is flattened a bit under the right side of the date and over ES-OF, and there are some other dull marks on the cheek and hair right of the ear. Glossy medium brown and chocolate. The marks are not obtrusive and the eye appeal is decent for the grade. MDS, the reverse die crack clear.

498. 1848 N-33 R5 F15. Five points sharper with too many light contact marks for the grade, including a vertical nick high on the neck and a light rim bruise over ST in STATES. Glossy medium brown and chocolate.

499. 1848 N-44 R6 F12. Glossy chocolate brown with hints of bluish steel and olive toning in protected areas. Possibly lightly cleaned and retoned, but the eye appeal is quite nice for the grade. A few insignificant contact marks and no hint of roughness. E-MDS, die state a. Tied for CC#8.

500. 1849 N-21 R4 VF30. Slightly sharper with some nicks on the chin and neck and a light rim bruise at the first A in AMERICA. Glossy chocolate brown with olive toning in protected areas. MDS.



501. 1849 N-22 R1 MS64+. Lustrous mint red fading to steel brown, about 80% of the mint color remaining on the obverse and 30% on the reverse. A gem cent that is flawless except for a spot of darker toning near the dentils under star 4. M-LDS, die state c (Newcomb's old #6). Removed from an NGC slab graded MS65RB (NGC label included). Not rare as a die variety but a great date coin.

502. 1849 N-23 R3 VF35. Glossy medium brown and chocolate with some darker chocolate at CEN. A light rim bruise at R in AMERICA is the only defect. MDS, die state b.



503. 1849 N-24 R3 AU58+. Lustrous bluish steel brown and chocolate with 5-10% of the mint red remaining, mostly on the reverse. No notable defects, only trivial contact marks visible with the aid of a glass. A small nick on the bust tip and a tiny rim nick over the left side of the second T in STATES can help identify this cent. MDS, die state a late. The strike is sharp enough to show a fine die crack passing around much of the obverse rim at the dentil roots. Tied for CC#3.

504. 1850 N-13 R4 VF25. Five points sharper with some small nicks on the obverse and a tiny pinprick left of the earlobe. Attractive glossy medium brown with olive in protected areas. Rare EDS, die state a, without any die cracks on the reverse.



505. 1850 N-21 R2+ MS62. Lustrous light steel brown with 20% of the original mint color remaining. The surfaces are satiny and quite attractive. Choice if not for a couple small nicks in the dentils right of star 12. LDS, die state c (Newcomb's old #10) with rim cud breaks at TES and F-A.



506. 1850 N-24 R5 EF45 (ANACS slabbed Uncirculated Details, Recolored, net MS60). Sharpness AU55 but cleaned and retoned light golden olive with sea-green overtones and hints of reddish steel overtone in a few places. The only mark is a faint hairline scratch from the eye down to the chin. A sharp example, but the odd color is a distraction. This one deserves a proper retoning, which could result in a slightly higher net grade. MDS. Tied for CC#2.



507. 1851 N-7 R1 MS62. Lustrous bluish steel brown with 10% of the mint red remaining. No spots or stains, and this cent would rate a slightly higher grade is not for a tiny planchet void at the peak of the second 1 and a faint scuff that breaks the frost between stars 1 & 2. A satiny, attractive cent. MDS, die state a.

508. 1851 N-7 R1 AU58 (NGC slabbed as MS63BN). Lustrous steel brown and chocolate with splashes of darker olive toning on both sides and tiny traces of mint red in a few of the protected areas. Mint state sharpness, but there is some microscopic roughness around the date and stars 1-3. The roughness is barely visible, with the aid of a good glass. The overall eye appeal is still nice. MDS, die state a late.



509. 1851 N-12 R1 MS60. Lustrous bluish steel brown with 5% of the mint color remaining. No spots or stains, and the only marks are faint and not visible to the unaided eye. EDS, die state a, with diagonal die lines covering the field around the date.

510. 1851 N-12 R1 VF35. Ten points sharper but there are splashes of reddish chocolate toning on both sides. No corrosion or notable contact marks. LDS, die state d (Newcomb's #11).



511. 1851 N-20 R3 MS60+. Attractive lustrous medium brown with 10-15% of the mint red remaining. No spots, stains, or contact marks. Would rate a higher grade if the strike was stronger at the rims. M-LDS, die state c (Newcomb's old #28).



512. 1852 N-8 R2 MS63. Mint red mellowing to steel brown, at least two-thirds of the red remaining. Near gem except for a shallow planchet lamination on the second S in STATES (as struck), plus some small spots of darker toning on both sides. Sharply struck EDS, die state a. Both dies are uncracked. Great luster and eye appeal.



513. 1853 N-3 R1 MS63. Choice lustrous medium brown with 25% of the original bright mint color remaining. Virtually flawless, a faint vertical nick midway between stars 1 & 2 and a faint diagonal nick on the rim under the 3 in the date are the best identifying marks, and they are barely visible. Scarce LDS, die state c. Tied for CC#3 overall and tied for finest known of the late state with one other example that has far less mint color.



514. 1853 N-10 R1 MS64. Repunched Date. Lustrous mint red mellowing to steel brown. 75% of the mint color remaining. No notable defects other than a tiny nick on the upper edge of the bust near the neck. MDS, die state b. Repunching is still visible on all 4 digits, strongest on the first 2. Removed from an NGC slab graded MS65RB (NGC label included).

515. 1853 N-15 R2 VF35. Five points sharper with a light contact mark on the jawline under the earlobe. Frosty chocolate brown with lighter brown highpoints from a very light cleaning. MDS, die state b.



516. 1853 N-19 R1 AU55. Repunched 853. Misaligned Obverse. Mint state sharpness but there is a dull, light scuff that breaks the frost at the dentils tips from star 3 to star 5. Otherwise the surfaces and eye appeal are excellent. Lustrous steel brown very delicately woodgrained with olive. Peeps of mint red remain on the reverse. E-MDS, die state a. The repunching under the 853 is clear and the obverse is misaligned to K-4.5.



517. 1853 N-27 R2 G6. Off Center. Slightly sharper but covered with microscopic contact marks and lightly cleaned. A spot of very fine carbon at the base of IT in UNITED is the best identifying mark. Slightly glossy chocolate and steel brown with lighter coppery brown highpoints from the light cleaning. Struck 15% off center to K-2.



518. 1854 N-2 R1 MS60. Lustrous bluish steel brown with 25% of the mint color remaining on the obverse but only traces showing on the reverse. No spots or stains, and the only contact mark is a scuff on the leaf under TE in STATES. E-MDS, die state a. The coronet at LIB is weakly struck, as usual, and the rim is uneven from star 4 to star 8.



519. 1854 N-8 R1 MS60. Highly lustrous light bluish steel with delicate overtones of sea-green. Choice except for a thin planchet lamination from below the date along the dentils to star 2 and a fainter one from star 2 across the obverse to the rim over star 9 (as struck). Sharp MDS, die state b early.



520. 1854 N-17 R1 MS64. Beautiful lustrous bright mint red just starting to mellow on the highpoints, 95% of the original color remaining. A solid gem if not for extremely shallow low spots (from debris on the die) covering most of the cheek and neck. The only mark is a small spot of dark toning under the left top of the N in ONE. M-LDS, die state c. Tied for CC#2, but this one has more original mint color than any of the other top pieces. Removed from an NGC slab graded MS64RD (NGC label included, and it shows the attribution).

521. 1854 N-23 R2 EF40. Ten points sharper but cleaned and retoned frosty light brown with dark steel overtones. Sharply struck and free of marks, but the color is not attractive. Needs retoning. MDS, die state b.

522. 1854 N-30 R7 EF40. Frosty medium brown with darker steel brown toning on the highpoints. There is a vertical nick in the center of the cheek, a smaller one on the end of the chin, and a faint vertical scuff mark in the field right of stars 3 & 4, plus a shallow planchet void on the rim at ER in AMERICA. The attribution points are clear. CC#4 of only 10 known of this extremely rare die pairing (obverse of N-21 late and reverse of N-23 early).



523. 1855 N-3 R1 MS63. Lustrous mint red fading to light steel brown, at least half the mint color remaining. The surfaces are satiny and the eye appeal is consistent with a piece near gem grade. A glass reveals a pair of very tiny specks of darker steel toning in the dentils under the 18 and a couple tiny nicks on the jawline near the earlobe. M-LDS, die state b. Tied for CC#3.

524. 1855 N-9 R1 EF40 (ANACS slabbed as AU55). **Knob-on-Ear.** Five points sharper with a spot of very fine carbon on the lower part of the inner hairbun. Otherwise very nice, free of any notable defects. Glossy medium brown and chocolate with frosty luster in protected areas. MDS, die state d. The knob break under T is raised, but it is not yet bold.

525. 1855 N-9 R1 VF30. **Knob-on-Ear.** Five points sharper with a couple nicks on the lower edge of the bust over the 8. Attractive glossy medium brown. M-LDS, die state e. The knob break under the T is strong while the segment under the Y is outlined by cracks but not raised.



528. 1855 N-13 R2 AU50+. Frosty medium brown with hints of underlying very faded mint color on the reverse. A faint horizontal hairline under CENT is the only defect. Attractive for the grade, close to AU55. MDS, die state b early.

526. 1855 N-10 R1 MS60+. **Italic 55. 12-Star die state.** Lustrous light bluish steel brown with at least 25% of the red remaining, mostly on the reverse. Choice except for some carbon spots, including a small one at the dentils over star 6, another in the dentils over the first S in STATES, one on the leaf under T in CENT, and another that covers much of the left upright of the M in AMERICA. EDS, die state b, with star 6 weak due to a clog in the die, the so-called 12-star die state.



529. 1856 N-16 R2 MS60. **Italic 5.** Lustrous light bluish steel brown with generous traces of underlying mint color showing through in protected areas. The surfaces are satiny and the only mark is a spot of darker toning at the upper left point of star 10. EDS, die state a. The coronet tip is softly struck. Tied for CC#8.



530. 1857 N-1 R1 AU50. Large Date. Sharpness closer to mint state but there is a stain on star 6 and a thin nick in the center of the cheek. Otherwise this one is choice. Frosty medium brown with mint luster covering the protected areas. E-MDS, die state a. The repunching in the dentils under the 18 is clear.

531. Blank Planchet for Large Cent. Stage II with Upset Rims. Glossy chocolate and steel brown. No corrosion or other distractions, although both sides show the usual pre-striking planchet marks and one side appears to have been very lightly cleaned. Let's grade it EF40 based on the surfaces and lack of defects. The upset rims are fairly wide suggesting this planchet was made for a Mature Head 1843-57 cent. Weight 165.5 grains. Ex Mike's Coins 1/7/89-Sam Thurman, Jr.

532. Pair of Minnesota Car License Plates reading EAC 001. The front plate is F12 showing dents from contact with snow and ice. The rear plate is EF40 with only minor marks. These plates were not personalized, the coveted EAC 001 assigned randomly by some computer in the Minnesota DMV system. Comes with an "official" certificate of authentication from our historian, Pete Smith. Ex Robert Mortimer 12/2006-Pete Smith. **Donated lot, all proceeds to EAC.**

533. Special Deluxe Hardbound Copy of the 2007 EAC Sale Catalog. One of 12 in leather, signed and numbered. **Donated lot, all proceeds to EAC.**

End of Sale

TERMS OF SALE

1. This is a private sale. Participation is by invitation only and is limited to members of The Early American Coppers Club or invited guests. The auctioneer reserves the right to refuse to honor any bid which, at his sole discretion, he feels is not submitted in good faith. The auctioneer may withdraw any lot, without prior notice, for any reason whatsoever.
2. The highest bidder acknowledged by the auctioneer shall be the buyer. In case of dispute the auctioneer may at his sole discretion reopen a lot. In all cases the auctioneer's decision shall be final and binding on bidders.
3. All sales are payable in U.S. funds immediately upon receipt of invoice unless other arrangements have been made prior to the sale. Lots delivered in state of sale are subject to all applicable state and local taxes unless appropriate permits are on file with us.
4. Postage will be added to the invoice of all successful mail bidders.
5. A 10% buyers fee will be added to all invoices.
6. Please keep in mind this is not an approval sale. All sales are considered final. Sales to the floor may not be returned for any reason save authenticity. Sales to mail bidders are final unless lot proves to have been mis-described.
7. Lots will be available for viewing at the 2007 EAC Convention in St Louis, or by appointment.
8. Mail bids or phone bids will be accepted up through the day of the sale. All bids will be reduced. Lots will open at one increment above second highest mail bidder. Bidding will proceed as competition dictates with the lot either selling to the floor or to the mail bidder at one increment above the second highest bid.
9. Consignor may bid or place a reserve bid on their own coins. Any coins repurchased by a consignor will be announced as a pass. Principals of the auction firm may consign or may bid on coins in the sale.

MAIL BIDS

Please mail all bids to:
M & G Auction
P.O. Box 161055
Altamonte Springs, FL 32716
Phone 407-682-9592
or Fax to Chris McCawley 972-668-2126

Mail Bid Form

I hereby authorize M & G AUCTIONS to execute the following bid(s) at the auction to be held April 28, 2007.

Please buy the following lot(s) for me at the price(s) not exceeding those shown. The bid(s) is made subject to the "Terms of Sale", and I agree to remit promptly on receipt of invoice or notification that the bid(s) is successful. This signed bid sheet constitutes an agreement between me and M & G AUCTIONS.

NAME _____

ADDRESS _____

CITY _____ STATE _____ ZIP CODE _____

SIGNATURE _____ PHONE () _____

EAC# _____

IF NECESSARY, PLEASE INCREASE MY BID(S) BY:

10% 20% 30% Other _____ %

SPECIAL INSTRUCTIONS:

Please Mail Bids To: M & G Auction • P.O. Box 161055 • Altamonte Springs, FL 31716 • Phone 407-682-9592 • FAX 972-668-2126



Copyright © 2007 M & G