



Chris McCawley and Bob Grellman

present

**The 2009
EAC Convention
Sale**

April 18, 2009



1817 N-6



1826 N-3



1818 N-8



1827 N-8



1820 N-9



1829 N-6



1820 N-14



1831 N-1



1822 N-6



1831 N-10



1822 N-11



1833 N-2



Chris McCawley - Bob Grellman

present

the

2009 EAC Sale

April 18, 2009, 7:30 p. m.

at the Drawbridge Inn 2477 Royal Drive

I-75 Buttermilk Pike, Ft. Mitchell, KY 800.354-9793

Welcome to the 2009 EAC Sale.

The sale will be held Saturday night April 18 at 7:30 p.m., at the Drawbridge Inn, Ft. Mitchell, KY.

Lot viewing will be held at the Early American Coppers Club Convention. We welcome your participation whether in person, by mail, by fax bid or by e-mail. Please feel free to call Chris McCawley (972-668-1575) or Bob Grellman (407-682-9592) to discuss any lot in the sale.

Mail bids should be directed to Bob's Florida address (P.O. Box 161055, Altamonte Springs, FL 32716-1055). Fax bids to (214-618-4592). E-mail bids can be made up to the day of the sale. E-mail: ljefferys@cfl.rr.com

This is a private sale, you must be a member of EAC to bid - please read our terms of sale before bidding.

COLONIALS



1. 1783 Washington Unity Cent Breen-1188 EF40+. Choice medium brown and light chocolate. The strike is uneven, weak at WASHINGTON and UNITED but strong elsewhere.

2. 1772 Imitation British Halfpenny G4. Smooth medium chocolate brown. Strong date and readable legends.



3. 1794 Talbot Allum & Lee/John Howard Mule Breen-1049 EF40. Choice glossy chocolate brown. Smooth and attractive, free of any notable defects.



4. Eagle on Shield die Overstruck on Draped Bust Large Cent Fair-2. A real oddity. I don't pretend to know what it is, but it has the look of something with great potential. The host planchet is a Draped Bust large cent with a small fraction, variety unknown. Overstruck on the obverse of the large cent is an eagle standing on a shield (suggestive but certainly not identical of the 1792 patterns). Near the rim right of the eagle is "LIBERTY", and at the lower left of the shield is "TEN". Those elements are relatively clear and easily readable. Not at all clear is the possibility of the word "CENTS" under the right side of the shield, which would make this a 10-cent piece of some sort. On the other side are generous traces of a large cent reverse, and there may be enough there to attribute this to a year or even a die variety, but I'll leave that to the masochists among us. Much of the wreath and most of the fraction and AMERICA can be made out with a bit of effort. The planchet is moderately corroded but offers a rather glossy medium brown patina with traces of reddish chocolate in a few of the protected areas. Weight 148.0 grains.

HALF CENTS

5. 1795 C-2a R3 AG3. Lettered Edge but Thin Planchet. A point or two sharper but lightly corroded with some old, fine scratches on the obverse. Lightly cleaned so the highpoints are tan while everything else is dark olive. The date is strong and the legends are readable except for HALF CENT. The edge lettering is complete but not strong. Weight 91.5 grains.



6. 1795 C-4 R3 VF30. Glossy chocolate brown. The only marks are a fine hairline scratch from the mouth to the cap, a dull rim nick opposite the lips, and a tiny pinprick in the field close above the pole. The head and opposing area inside the wreath are softly struck, as usual, but everything else is strong. Excellent eye appeal. LDS, Manley state 2.0. Weight 83.5 grains. Ex Russ Butcher 2/7/08-Ray Rouse, McCawley & Grellman Auctions/Goldberg's 9/14/08:26.



7. 1795 C-6a R2 VG10. Sharpness near VF20 but dark olive with uniform very fine roughness under the glossy patina. The only marks are a couple old, fine scratches in the field under the cap and traces of shallow reddish verdigris left of the date. The date and legends are strong. MDS, Manley state 2.0. Weight 77.3 grains.

8. 1795 C-6a R2 G6+. Glossy medium brown and light chocolate with darker chocolate in protected areas. The surfaces are smooth and the only mark is a thin fissure at the dentils over the E in UNITED. The date and legends are complete and clear. MDS, Manley state 2.0. Very nice for the grade, close to VG7.

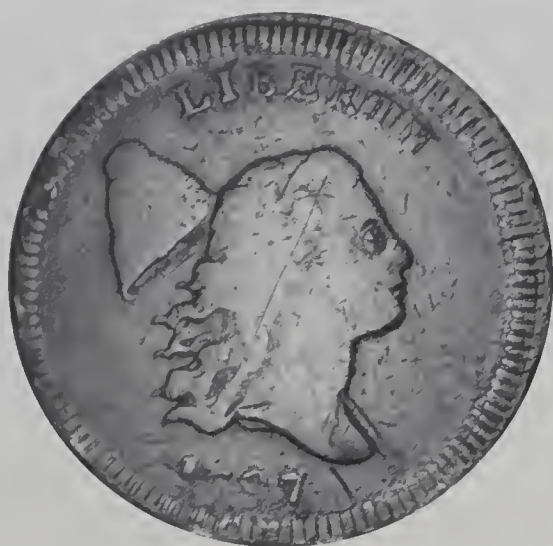


9. 1795 C-6b R6 VG8. Struck over 1795 S-78 Large Cent. Sharpness VF20 but banged up a bit, strongest at AMERI. The date and legends are strong except for the first A in AMERICA thanks to a dent on part of that letter. Steel brown and light chocolate with dark olive brown toning in protected areas. Struck on a spoiled 1795 S-78 large cent cut down to make a half cent planchet. The bust and top of the 5 in the date of the large cent are clearly visible in the field left of the date, and that's all you need to make the positive attribution on the undertype. A really neat piece. Weight 100.4 grains.



10. 1797 C-1 R2 VG7. 1 Above 1 Variety. Badly Cracked Planchet. Mostly glossy light to medium chocolate brown with traces of darker olive brown in protected areas. A decent example except for a large planchet crack left of the lowest curl and a smaller one at the rim before the nose (both as struck). The date and legends are complete and clear. LDS, Manley state 5.0.

11. 1797 C-1 R2 G4. 1 Above 1 Variety. The obverse is a point better, the reverse a point weaker. Nice glossy chocolate brown, the devices a couple shades lighter than the fields. The date and legends are complete and easily readable except for weakness at the top of the reverse. The 1 above 1 feature is obvious.



12. 1797 C-2 R3 VG10. **Double Struck.** Glossy dark olive brown with lighter chocolate toning covering the devices. The surfaces are decent but you can find a couple tiny specks of verdigris and there are a few faint hairline scratches on the portrait. Double struck with an offset of 1-3 millimeters between the impressions. The offset is widest at the bust tip. Less evidence of the first strike is visible on the reverse, but the N from UNITED is clearly visible under NI of the second strike.



13. 1797 C-3a R3 VG8. **Plain Edge.** Glossy light olive and chocolate brown with an arc of dark olive toning from the neck into the field over the bust tip and a larger swipe of similar dark toning across the reverse. The date is bold and the legends are clear except for some weakness at UNITED STATES. LDS, Manley state 3.0.



14. 1800 C-1 R2 AU50. **Planchet Flaw.** Frosty chocolate and dark steel brown. There is very little if any wear on this piece and satiny mint luster shows through in the fields and protected areas. However, there is a planchet void under the 1 in the date causing weakness on the bottom of the 1 & 8 and in the opposing dentils over TES. Otherwise the only marks are a few tiny ticks or planchet chips on the front edge of the neck. MDS, Manley state 3.0, with thin rim cud breaks over LIB.



15. 1800 C-1 R2 VF35. **Possibly Double Struck.** Five points sharper but there is a dull nick on the neck. Glossy dark steel brown and chocolate with lighter reddish chocolate brown in protected areas. MDS, Manley state 3.0. There is evidence of a double strike of some sort showing as an arc impressed on the lower half of the reverse. The rim under this arc show incuse impressions of a struck cent rather than a die, and the opposing rim shows similar impressions. Haven't figured this one out yet, but it's clearly abnormal.



16. 1804 C-6 R2 PCGS graded AU55. **Spiked Chin.** Frosty steel brown and olive, the obverse several shades lighter than the reverse. No significant marks, only a light touch of friction on the highpoints and a few trivial nicks scattered about both sides. EDS, Manley state 1.0, Braig 1.2 or slightly later. The "Spiked Chin" feature is strong. **Our grade is EF45.**

The 2009 EAC Convention Sale, April 18, 2009

17. 1804 C-13 R1 VF25. Plain 4 without Stems. Sharpness EF40 with fine scratches on the head and small patches of verdigris at ES OF. Otherwise this piece is free of defects. Frosty dark steel and olive brown. Nicely struck MDS, Manley state 2.0.

18. 1805 C-1 R2- F12. Stemless Wreath. Attractive glossy light chocolate brown. No notable defects. Nice for the grade. MDS.

19. 1806 C-1 R1 F12+. Stemless Wreath. Glossy chocolate brown mixed with some slightly lighter brown tones on the reverse. Smooth and attractive, free of any notable defects. MDS, the reverse rotated 50 degrees CW.



20. 1806 C-3 R6 AG3. Slightly sharper but there is a strong dent on the edge left of the lowest curl and a small one on the edge over the M in AMERICA. Slightly glossy dark steel brown and olive. The surfaces are decent but a bit dull from extremely faint roughness, but there is no verdigris. The date is strong and the legends are complete. Extremely rare LDS, Manley state 3.0, with a strong cud over RICA. A low grade piece to be sure, but I've never seen a nice one with the cud.

21. 1806 C-4 R1 F12. Large 6 with Stems. A few points sharper with a few barely visible hairline scratches on the portrait, mostly well hidden in the hair. Otherwise the surfaces are smooth and offer excellent eye appeal for the grade. Glossy chocolate and light olive brown. E-MDS, Manley state 1.0. The reverse is rotated 50 degrees CW.



22. 1807 C-1 R1 EF40. Frosty chocolate brown with lighter brown and golden tan peeking through in protected areas on the obverse. No marks or other defects. Outstanding eye appeal for the grade. LDS, Manley state 3.0.



23. 1810 C-1 R1 VF25. Slightly sharper with a few too many tiny contact marks for the higher grade. Glossy chocolate and steel brown. MDS, the reverse rotated 55 degrees CCW.

24. 1811 C-2 R3 G5. Glossy dark chocolate with lighter olive and steel toning on the devices. A light rim bruise at the C in AMERICA is the only notable defect. The date is strong and the legends are clear except for the usual reverse weakness.



25. 1825 C-2 R1 EF40. Sharper by at least 5 points and nearly choice except for a small planchet fissure on the rim under the 18 and the opposing rim over the second T in STATES, as struck. Glossy medium brown and chocolate with traces of frost showing in protected areas. EDS, Manley state 1.0. The die clashmarks on the reverse from its earlier C-1 marriage are weak but still visible.

The 2009 EAC Convention Sale, April 18, 2009

26. 1832 C-3 R2 AU50. Glossy light chocolate brown with frosty light brown and tan in protected areas and a couple subtle splashes of reddish chocolate brown toning on the reverse. A spot of dark toning at the top of the ear is the only notable mark. MDS with the always present die rust showing on the reverse.

27. 1833 C-1 R1 PCGS graded MS62 Brown. Frosty light olive and steel brown. Satiny luster covers the protected areas. A touch of rub on the highpoints and a few microscopic ticks scattered over both sides. Nicely struck MDS, Manley state 2.0. Our grade is AU50+.

28. 1834 C-1 R1 VF25. Ten points sharper with traces of very fine verdigris or crud dusted into protected areas near the dentils on both sides. Toned a rather uneven mix of medium brown, chocolate, and olive. LDS, Manley state 3.0.



29. 1836 Electrotype Copy of the Proof Original Breen 1-A MS60. A deceptive copy that offers outstanding eye appeal. Bluish steel brown and light chocolate with traces of original red on both sides. No spots, stains, or contact marks. The fields are smooth but not especially reflective. A wonderful hole filler.



30. 1837 Half Cent Token Low-49 Rulau HT-73 R2 EF45. Choice frosty light olive. Sharply struck and free of any defects. Just a bit of friction on the highpoints. A great example of this popular half cent token from the Hard Times era.



31. 1840 Electrotype Copy of the Proof Original Breen 1-A MS63. Frosty dark steel brown with 20% of the original red remaining. Flawless except for a dull depression on the top of the C in CENT. Another very deceptive copy of a proof-only date.

32. 1841 Electrotype Copy of the Proof Original Breen 1-A MS63. Frosty dark steel brown with 40% of the red remaining, mostly on the reverse. The usual later die state with the die crack through stars 3-6. Another well-executed copy that might pass as real except for the usual abrasions around the edge to hide the obligatory seam.

33. 1842 Electrotype Copy of the Proof Original Breen 1-A MS63. Frosty dark steel with 40% of the original golden red remaining, mostly on the reverse. A flawless copy.

34. 1843 Electrotype Copy of the Proof Original Breen 1-A MS63. Virtually identical to the preceding lots, but this one has about half the original red remaining. A premium electrotype executed with great skill.

35. 1845 Electrotype Copy of the Proof Original Breen 1-A MS63. Frosty dark steel with 25% of the red showing. No defects.

36. 1846 Electrotype Copy of the Proof Original Breen 1-A MS60+. Frosty dark steel brown with 15% of the red showing. A couple small marks on the rim at the top of the reverse from choice.

37. 1847 Electrotype Copy of the Proof Original Breen 1-A MS63. Frosty dark steel brown with 25% of the red showing. A small spot here and there, nothing significant.

38. 1848 Electrotype Copy of the Proof Original Breen 1-A MS60. Glossy chocolate and steel with lighter toning on some of the highest points of the design from a light rub. No spots or marks.

39. 1849 Electrotype Copy of the Small Date Proof Original Breen 1-A MS63. Frosty dark steel brown with nearly half the red remaining. A small spot right of star 7 is the only distraction.

The 2009 EAC Convention Sale, April 18, 2009

40. 1849 C-1 R2- VF35. Five points sharper with a dull dent on the lips and chin and another in the field off the lips. Frosty but slightly dull light chocolate with a bit of reddish chocolate brown mixed in on the reverse. E-MDS.

41. 1849 C-1 R2- VF30. Ten points sharper with a few light contact marks plus a patch of microscopic roughness at star 12. Glossy light olive and chocolate brown. MDS, Manley state 2.0.

42. 1851 C-1 R1 EF45. Attractive frosty light chocolate brown with traces of mint luster showing in protected areas. Sharply struck MDS.

43. 1851 C-1 R1 VF25. Glossy light chocolate with darker chocolate brown in protected areas. Nice for the grade, free of any distractions. MDS.



44. 1852 Electrotype Copy of the First Restrike Proof Breen 1-B MS63. Frosty dark steel brown with 30% of the red showing. Virtually flawless, a superior example of electrotype craftsmanship. A good match for all the other electrotype proofs offered earlier in this sale.

45. 1857 C-1 R2 VF30. Ten points sharper but a bit dull from extremely faint roughness thanks to a dusting of very fine carbon. A couple tiny marks at star 8, otherwise free of defects. MDS.

46. Trio of Half Cents. Includes 1803 C-3 EDS F15 net G4 due to corrosion, 1804 C-13 EDS VG10, and 1807 C-1 LDS VG8 net G4 due to micro roughness. All have a strong date and complete legends. Lot of 3 coins.

47. Pair of Half Cents. Includes 1833 C-1 MDS VF30 net VF20 for recoloring and 1834 C-1 EDS F12 choice. Lot of 2 coins.

48. Trio of Half Cents. Includes 1849 C-1 VF30 net F15 for recoloring, 1853 C-1 EF40 net F15 for reverse dig and recoloring, and 1854 C-1 VF30 net VG10 for marks and recoloring. Lot of 3 coins.

LARGE CENTS

49. 1793 S-1 or S-2 R4 Basal State-1. Chain Cent. Glossy chocolate brown. The surfaces are smooth except for a few contact marks, including some shallow comma-shaped digs on the reverse. This cent is just very heavily worn. The portrait and LIBERTY are partially visible but there is enough detail visible to see this is the S-1/S-2 obverse die. The reverse shows only 4 of the links in the chain, not enough detail to determine the variety. But it's a Chain Cent! At least the color is attractive and the planchet is void of any hint of corrosion or verdigris.



50. 1793 S-5 R4 VG8. Wreath Cent with Large LIBERTY. Sharpness VF20 but there is a deep planchet lamination void covering the back of the head into the field beyond. The remainder of the planchet is smooth and quite attractive if not for several obvious rim bruises on both sides. Glossy chocolate brown with traces of reddish brown in the lamination void. The date and legends are complete and strong. EDS, Breen state I. The reverse is slightly misaligned to K-5.5.

51. 1793 S-10 R4 Fair-2. Wreath Cent. Sharpness at least F15 (maybe EF40; it's difficult to tell) but very rough from uniform corrosion. This one may have been dug. No marks or verdigris. Lightly cleaned, now mostly dark olive and steel with coppery tan toning around much of the rim. The date is present but difficult to read due to the corrosion while the legends are less of a challenge.

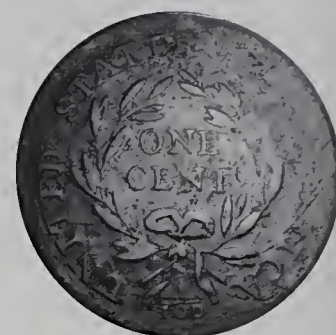
52. 1793 S-14 R5- Basal State-1. Liberty Cap. Reddish brown splashed with darker olive. The date is gone but LIBERTY and most of the portrait remain visible and the bisecting obverse crack is obvious through the E to the top of the head. Most of the reverse is slick, but the area around the fraction and left to UNI remains visible. No roughness or verdigris, but there are some digs in the field behind the portrait and on the lower right part of the reverse. Hey, what do you expect for Basal State?

Rare 1793 S-16
Ex. John Wright

53. 1793 S-16 R6- G-4. A couple points sharper. Medium brown with some faded spots of oxidation. Some field marks, but no corrosion. Rated G4 CC#10 in the WCN census, CC#12 by DNB. This is a rare variety and at this point a lot of bang for the buck compared to a common type coin. Ex John Wright.



54. 1794 S-22 R1 F15. Ten points sharper with traces of very shallow verdigris in protected areas on both sides. The surfaces are decent and mostly glossy, but microscopic roughness is hiding under the dark olive brown patina. The highpoints of the portrait are glossy light chocolate brown. The only mark is a dull rim nick left of the lower edge of the cap. The date and legends are complete and strong. MDS with obvious "Mounds" at the top of the wreath and in the leaves below NITE.



58. 1794 S-28 R2 F12. The obverse shows VF20 sharpness with traces of shallow roughness or planchet chips, mostly in the field before the neck and near the dentils under the cap. The reverse is relatively smooth but is unevenly struck with obvious weakness at OF AMER. Glossy chocolate brown with lighter brown toning on the highpoints. No verdigris or notable signs of contact other than a dull rim nick over the top of the cap. MDS, Breen state III.



59. 1794 S-32 R2 G4. A few points sharper but cleaned and starting to retone. Much of the coppery color remains, and this cent would benefit from a proper retoning. There are some fine pin scratches on the portrait and a dull scratch at the bottom edge of the cap, plus a scattering of shallow pitmarks on the reverse. The date is strong and the legends are complete. Not as bad as it might sound, but TLC is required. E-MDS, Breen state II.

55. 1794 S-22 R1 F15+. Glossy dark steel brown and chocolate with lighter steel brown toning in protected areas. Smooth and attractive for the grade. A small rim bruise at IT in UNITED is the only mark of any significance. LDS, Breen state VIII. The "Mounds" die defects on the reverse are well advanced and the die crack up through the 4 and portrait is clear.



56. 1794 S-23 R4+ PCI graded VF30. Sharpness F15 but covered with uniform light to moderate corrosion. No marks or verdigris. Dark olive with lighter chocolate toning on the highpoints and most of the portrait. M-LDS, Breen state IV. The date and legends are complete and easily readable. **Our grade is net G6.**

60. 1794 S-35 R5 VG8. Glossy chocolate brown. The surfaces are decent but not perfectly smooth. The faint microscopic roughness is well hidden under the glossy patina and the eye appeal is decent for the grade. No verdigris, just a few contact marks, including a half dozen small pinpricks on the obverse, a half dozen small rim marks on the reverse, and a dull scratch that meanders over CENT. The date and legends are complete and easily readable. M-LDS, Breen state VI. Ex Dan Trollan 4/05-Walter Reed.

Rare 1794 S-27

57. 1794 S-27 R5 G5. Very slightly sharper but there is extremely fine granularity covering the fields. The roughness is well hidden under a glossy chocolate brown patina and the eye appeal is quite nice for the grade. No verdigris, only a few tiny rim marks, including a very light rim bruise left of the lower edge of the cap, a dull rim nick at the M in AMERICA, and a shallow scrape on the rim over the adjacent ER. The date is complete and clear and the legends are easily readable except for ES OF, which are faint. EDS. Ex Henry C. Hines-Barney Bluestone-Dr. Charles L. Ruby-Superior (privately)-Denis Loring-Jackson C. Storm 8/1/84-Bob Matthews, Superior 5/28/89:157-J. R. Frankenfield, McCawley & Grellman Auctions/Superior 2/17/01, 220-Colonel Steven Ellsworth Collection.

The 2009 EAC Convention Sale, April 18, 2009



61. 1794 S-36 R5 VG8. Sharpness F15 but covered with fine roughness, strongest on the reverse. No verdigris, and the only marks are a few rim bruises, including one opposite the mouth and another at ME in AMERICA. Light chocolate brown with olive brown in protected areas of the reverse. The date and legends are complete and easily readable, although the date is weakened a bit by the roughness. Ex McCawley & Grellman Auctions/Superior 2/18/01:2130-Colonel Steven Ellsworth Collection.



62. 1794 S-36 R5 G5. Sharpness F12 but corroded, the roughness varying from extremely fine to moderate. No verdigris, and the only contact mark is a small rim nick at the second T in STATES. Slightly glossy dark steel and olive with lighter steel brown highpoints. The date is weak but readable while the legends are complete.



63. 1794 S-38 R5 F12. Slightly sharper with a few patches of shallow roughness, including one at LI, another at the E in ONE, and the largest at ED-S. The two rough patches on the reverse contain traces of waxy greenish verdigris. The only contact marks are a dull one on the rim at the bust tip and a light rim bruise at LI. Glossy medium brown and reddish chocolate with darker olive brown toning in the rough patches. The date is clear and the legends are strong. EDS, Breen state II. The chips in the field under the cap are strong and the reverse is rotated 50 degrees CW. Ex McCawley & Grellman Auctions/Superior 9/5/04:174-Colonel Steven Ellsworth Collection.

64. 1794 S-39 R6 Fair-2. A point or two sharper with a dozen or so shallow pitmarks on both sides mixed in with extremely fine roughness. Several dull scratches on the portrait and a couple deep ones on the lower part of the reverse are the notable marks. Overall this is a rather ugly cent. Slightly glossy mix of dark olive and chocolate. The date is faint at best but the legends are nearly complete and the die chips in the field under the cap are obvious. LDS with a die crack arcing from the dentils just left of the fraction to the leaf tip under UN. Ex McCawley & Grellman Auctions/Superior 10/1/2000:1141.



65. 1794 S-42 R4 VG10+. Sharpness VF30 with fine roughness under a rather glossy patina of dark olive brown and lighter chocolate. The obverse is covered with myriad faint hairline scratches that are hidden in the patina and there is a subtle pinch on the rim left of the cap that caused a barely detectable bend in the planchet. A shallow depression in the field before the face is the only other notable defect. Removed from a SEGS slab graded XF45 (SEGS label included).



66. 1794 S-44 R1 VG10. Sharpness VF30 but covered with very tiny pitmarks. No verdigris or contact marks, but the obverse was very lightly cleaned leaving the highpoints on that side a coppery tan. The remainder of the planchet is a more natural dark chocolate and olive brown. M-LDS, Breen state IV.

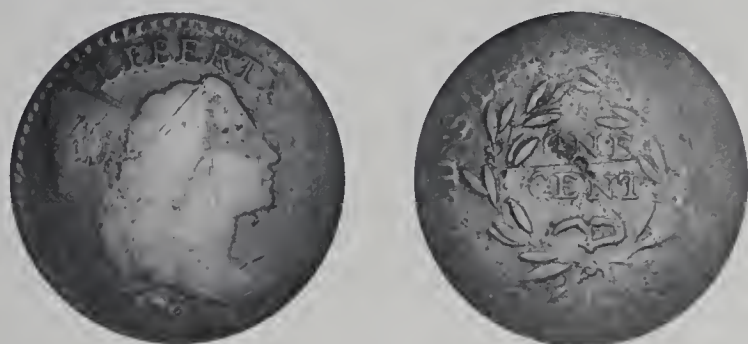
1974 S-48 Starred Reverse
With Blundered Edge



67. 1794 S-48 R5 VG7+. Starred Reverse. Blundered Edge Lettering. The obverse has the sharpness of F15 or slightly better but there is a patch of shallow pitting at the 17 in the date that effectively obliterates those two digits, and the pitted area is covered with some old pinscratches as well, probably added in a crude attempt to remove reddish verdigris from the pits. The remainder of the obverse is covered with extremely fine roughness but no verdigris. The reverse is not as sharp as the obverse, perhaps VG10 or so, but that side is also covered with very faint roughness. A rather glossy patina of light olive brown and chocolate with darker olive in protected areas covers both sides and helps hide most of the roughness. A horizontal scratch before the throat, a dull rim nick at the I in LIBERTY, a pair of rim nicks at the T in UNITED, and a rim nick over the left edge of the E in AMERICA are the other notable marks. About two-thirds of the stars are visible, and about half of the original 94 stars remain clear. M-LDS, Breen state III, with a delicate bulge across the reverse causing weakness in the center, as usual. The edge lettering is strong but blundered reading ONE HUNDRED A DOLLAR. This is caused when the Castaing machine is not reset all the way to the null (starting) position before adding the edge lettering to a planchet. On this lot, I think you pay for the stars, not the edge letters, but it's a neat anomaly.

The 2009 EAC Convention Sale, April 18, 2009

68. 1794 S-50 R5 VG7. Sharpness VF35 but covered with light to moderate pitting. Traces of shallow verdigris can be found on both sides, but the verdigris is well hidden under a thick patina of reddish chocolate and olive brown. The highpoints of the portrait are a lighter shade of brown and are free of roughness. The only contact marks are a dull scrape across the date, which is weakened by the scrape and roughness but remains easily readable, and a rim nick at the T in LIBERTY. EDS, Breen state I. Ex Lou Riggs MBS #33, 2/55:431-Lou Riggs-Lou Riggs MBS #35, 6/55:31-Edward H. Schwartz, Abe Kosoff 10/61:56-Eastern Collection-Superior 2/76:1374-Tom Morley, 1979 EAC Sale, lot 5-R. S. Brown, Jr., Superior 1/27/96:72-Colonel Steven Ellsworth Collection.



69. 1794 S-50 R5 AG3+. The obverse is G4 while the reverse is only AG3. Mostly glossy reddish chocolate brown with slightly lighter chocolate brown toning covering the devices. There are a couple small marks at the bust tip and shallow digs at ON in ONE, plus a fine horizontal pinscratch under ONE to the D in UNITED. The date is weak but easily readable and LIBERTY is strong, but less than half the reverse legend remains readable.



70. 1794 S-51 R5- F15. Sharpness VF35 but the obverse fields are covered with faint roughness and the reverse has a dozen pitmarks containing greenish verdigris. The reverse is also unevenly struck leaving OF AMERICA faint at best while everything else is strong. Taken alone, the obverse would rate a high-end VF grade. The notable marks are a tiny planchet crack on the rim well right of the Y in LIBERTY (as struck) and a shallow rim bruise or beveled edge on the planchet at the N in UNITED. Glossy reddish chocolate with lighter brown toning on the obverse devices. EDS, Breen state I. Removed from a SEGS slab graded XF40 (SEGS label included, and it shows the attribution).



71. 1794 S-56 R3 F15. "Office Boy" Reverse. Sharpness VF30 but there are several rim dents on both sides plus a collection of dull, light scratches around ONE CENT. Otherwise the surfaces are very attractive, smooth and free of defects. Glossy light olive brown with traces of reddish chocolate in protected areas. MDS, Breen state II. Ex Dr. Charles L. Ruby, Superior 2/11/74:385-Tom Morley, Cape Kennedy Medals 12/20/75:52-C. F. Gordon-H. W. Whitaker 10/81-John D. Wright.



72. 1794 S-61 R4 F12. Sharpness VF20 but there are too many light contact marks for the sharpness grade including a rim bruise at UN in UNITED. No roughness or verdigris, and the color is an attractive glossy light to medium chocolate brown. E-MDS, Breen state II. Ex McLaughlin & Robinson Auctions #4385, 2/89:96 (as F15, lot ticket included).



73. 1794 S-62 R4+ F15. Very slightly sharper with minor roughness from tiny planchet chips at TES OF, as struck. The only sign of corrosion is a small patch of very fine carbon at the 17 in the date. Otherwise the surfaces are smooth and attractive. Only a few minor contact marks, including a nick on the jawline and a short hairline scratch under the N in UNITED. Glossy dark steel and olive mixed with chocolate brown. LDS, Breen state II, with a strong cud break at the rim behind the portrait. Ex 2003 EAC Sale, McCawley & Grellman Auctions 4/26/03:302.



74. 1794 S-62 R4+ VG10. Ten points sharper with minor roughness in the obverse fields and slightly stronger roughness at RICA and the fraction. No verdigris. The notable marks are a light rim bruise at the top of the cap and another at TA in STATES. Glossy light olive brown with darker olive toning in protected areas. LDS, Breen state II, with a strong cud break at the rim behind the portrait.

75. 1795 S-75 R3 G4. **Lettered Edge.** Sharpness VG8 or slightly better but covered with microscopic granularity on all but the highest points of the design. Dark olive and steel with coppery tan highpoints from a light cleaning or rub. No marks or verdigris. The date is strong and the legends are clear. Will look better when the highpoints tone back to a more natural color.



76. 1795 S-77 R3 VF25. **Plain Edge.** Sharpness EF45 but there is a patch of very fine roughness in the field before the portrait, a couple smaller ones in the field behind the portrait, and two others rather well hidden in the wreath. The remainder of the planchet is excellent, smooth and attractive with underlying frosty mint luster. Glossy reddish dark steel and chocolate. No marks of any significance and only tiny specks of crud or verdigris in protected areas on the obverse. M-LDS, Breen state V.

77. 1795 S-78 R1 G6. **Plain Edge.** Several points sharper with faint roughness over much of the planchet and small patches of shallow corrosion at ED into the leaves below and over the left side of the O in OF. There are traces of verdigris dusted into a few places and a dull scrape in the field under LIBE. Slightly glossy dark olive brown with lighter brown toning on the devices. The date is bold and the legends are clear except for weakness at AMERI. M-LDS.



78. 1795 S-78 R1 EF40. **Plain Edge.** Glossy dark steel brown and chocolate with traces of frosty tan in protected areas around the portrait. The only marks are a couple shallow planchet flakes on the top of the cap and in the field near the dentils before the face, as struck. A very faint patch of extremely fine roughness is located at the bottom of the second S in STATES. Otherwise the surfaces are void of any hint of corrosion. E-MDS, Breen state II.



79. 1796 S-82 R5 VG7+. Liberty Cap. A few points sharper but a bit dull from uniform microscopic granularity that covers the planchet. No verdigris and only a few minor marks, including a rim nick at the I in LIBERTY and a short scratch that joins the upper leaves of the wreath. Slightly glossy dark olive brown and steel. MDS, Breen state II. The date is bold and the legends are clear. Ex McLaughlin & Robinson Auctions #84, 1/86:287-Colonel Steven Ellsworth Collection.

80. 1796 S-83 R4 AG3. Liberty Cap. Clipped Planchet. Glossy dark olive and steel with chocolate toning on the highpoints. The date is clear and the legends are weak but complete. No defects, just well worn. EDS, Breen state I. There is a small curved planchet clip, as struck, over IB in LIBERTY and at the opposing rim left of the fraction.



81. 1796 S-84 R3 VG10. Liberty Cap. Sharpness F15 or slightly better but covered with microscopic roughness and there are a few shallow digs on the obverse, the strongest of these on the tip of the chin. A dull rim nick at the first A in AMERICA is the only additional mark of any consequence. No verdigris. Slightly glossy chocolate and olive brown. E-MDS. The bulge at the 6 is just starting to show but the date remains clear and the legends are strong.

82. 1796 S-86 R5 G4+. Liberty Cap. The obverse is slightly better while the reverse is weaker. Glossy dark olive and steel. The only notable mark is a small pinprick or pitmark located in the hair left of the eye. The date is complete and easily readable, LIBERTY is strong, and about half the reverse legend remains readable, although mostly weak. Ex Gary Smith-Fred Borchardt 2/6/99-Walter Reed 11/8 03-Colonel Steven Ellsworth Collection.



83. 1796 S-91 R3 G5. Liberty Cap. A point sharper but dull from extremely fine roughness that covers both sides. No verdigris, only minor contact marks consistent with the grade. A fine horizontal pinscratch from the nose to the rim at right is the only notable one. Slightly glossy dark olive and steel. MDS. The date is clear and the legends are complete except for weakness on D-STA.



84. 1796 S-94 R5+ F12. Draped Bust. Sharpness VF25 with a patch of reddish corrosion at RICA. The remainder of the planchet is quite nice, but there are a couple small, inconspicuous patches of minor corrosion in the mix. A wide but very shallow scrape is well hidden in the natural patina in the field behind the portrait. Mostly glossy chocolate brown with darker olive and steel toning in protected areas. The date and legends are complete and strong. Near the lower end of the condition census in spite of the obvious defects.

The 2009 EAC Convention Sale, April 18, 2009



85. 1796 S-99 R5 VG7. Draped Bust. Several points sharper with a trio of shallow pitmarks at LI in LIBERTY and several more inside the wreath and at TE in UNITED. The pitmarks contain greenish verdigris, and they do catch your eye. The only signs of contact are some faint hairline scratches on the face and a small dig under the right foot of the R in AMERICA. Otherwise the surfaces are smooth and very attractive. Glossy chocolate brown, the highpoints a few shades lighter than the fields. LDS, Breen state III, with a raised retained cud break outside the die crack behind the head. The date is strong and the legends are complete. Ex John Cobb-R. S. Brown, Jr., Superior 1/27/96:138-Colonel Steven Ellsworth Collection.



86. 1796 S-102 R4 VG8. Draped Bust. Sharpness F12 with some contact marks on otherwise smooth, corrosion-free surfaces. The obverse shows some faint, short hairline scratches, none notable. The reverse displays considerably more marks, including a rim bruise at RI, a small one at the D in UNITED, and short, dull scratches at F-A, ME, and at the right top of the T in CENT. Glossy chocolate brown. The date and legends are complete and clear. LDS, Breen state II. Ex Doug Bird-Clay Everhart.

87. 1796 S-108 R4 VG10. Draped Bust. Sharpness VF20 or slightly better but covered with uniform very fine granularity under a glossy very dark olive and steel patina. There are traces of waxy greenish verdigris in a few of the protected areas, mostly around LIBERTY. Only a few marks, including a rim nick at E in LIBERTY, a tiny scratch between the 1 & 7 in the date, and a small scrape on the rim over the second T in STATES. A tiny planchet clip affects the dentils over ER in LIBERTY and the opposing ones under the left edge of the fraction, as struck. The date is easily readable and the legends are strong. Ex Dorothy Gershenson 7/30/93-Walter Reed.



88. 1796 S-110 R3 VG7. Draped Bust. Slightly sharper but very slightly rough, strongest on the reverse where there are microscopic specks of greenish verdigris hidden in protected areas. Just a few contact marks, including a small dig on the bottom of the E in LIBERTY, a minor rim bruise over the adjacent RT, and another small rim bruise just left of the fraction. Glossy chocolate and light olive brown with reddish chocolate in protected areas. EDS, Breen state II. Ex Walter Reed.

89. 1796 S-112 R4+ G5. Draped Bust. Sharpness VG10 but covered with uniform moderate granularity. No marks or verdigris. The date and legends are clear except for some weakness at ONE CENT due to swelling inside the wreath associated with the later die state. Chocolate brown with darker olive and steel in the protected areas. M-LDS, Breen state IV.



90. 1796 S-114 R5- VG7. Draped Bust. Very slightly sharper but covered with very fine roughness. No verdigris, just some light contact marks, including a pinprick near the dentils before the mouth and a dozen more tiny pinpricks at the top of the wreath. Light olive brown and chocolate, possibly retoned. EDS, Breen state I. The date and legends are complete and clear except for the usual weakness at OF.

91. 1796 S-115 R3 G5+. Draped Bust. The obverse is VG8 sharpness net G4 for light corrosion mixed with some old pinscratches. The reverse is F15 sharpness net VG8 for light roughness. Both sides have traces of shallow red and green verdigris. Slightly glossy dark olive and chocolate. The date is clear and the legends are bold. MDS, Breen state V. Ex Walter Reed 3/30/01-Colonel Steven Ellsworth Collection.

92. 1796 S-115 R3 G5. Draped Bust. Sharpness F12 but corroded, moderately so on the obverse, lightly on the reverse. No marks or verdigris, and the color is a decent and slightly glossy chocolate and olive brown. The date is clear except for weakness on the 1 due to the roughness and the legends are strong except for strike weakness at ATES. MDS State V.

The 2009 EAC Convention Sale, April 18, 2009



93. 1796 S-116 R5- AG3+. Draped Bust. Very slightly sharper but there are a couple dozen tiny pitmarks scattered over the reverse. Otherwise the surfaces are fairly decent, just a bit dull from faint roughness in the fields. No notable marks. The date and legends readable. Olive brown and reddish chocolate.

94. 1796 S-116 R5- Fair-2. Draped Bust. Slightly sharper but dark and corroded. No notable marks or verdigris, but ugly nonetheless. Dull very dark olive and steel. The date is easily readable through the roughness and most of the legends remain visible, but OF AMERICA is faint at best. Ex Peter Boisvert.



97. 1797 S-120a R3 F12. Plain Edge. Reverse of 1796. Slightly Off-Center. Sharpness VF20 with extremely fine roughness covering much of the planchet. No verdigris, and the only notable contact mark is a faint hairline scratch from the ear down to the bottom of the neck. Glossy chocolate brown with darker chocolate and olive brown in protected areas. MDS, Breen state III early. The date is bold and the legends are strong. Looks better than it might sound. Struck slightly off center to K-1.5. Ex Norm Pullen 4/72-John D. Wright Collection.

98. 1797 S-122 R5+ AG3. Very slightly sharper but covered with fine porosity. No marks or verdigris. Slightly glossy dark chocolate and olive brown. The date is clear and the legends are all readable. EDS.



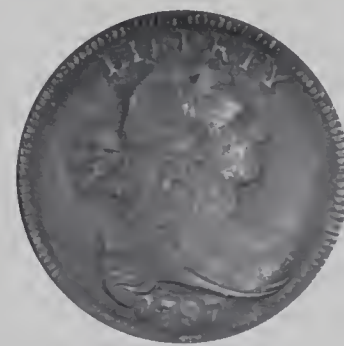
95. 1796 S-117 R5+ G6. Draped Bust. Sharpness VG10 but covered with microscopic granularity on all but the highpoints of the design. No verdigris, but there are fine hairline scratches mixed into the patina on both sides. The date and legends are complete and clear. Olive and dark chocolate brown with some gloss on the devices. MDS, Breen state III. Ex Walter Reed.



99. 1797 S-124 R5+ AG3. Several points sharper but a bit rough, mostly in the fields and protected areas. No marks or verdigris. The date is distorted by the roughness but remains readable and the legends are complete except for weakness at ONE CENT. Light chocolate brown with darker olive in protected areas. EDS, Breen state I. Ex Doug Bird 1/03-Mike Swift.



96. 1796 NC-4 R5+ G4. Draped Bust. A point or two sharper with fine porosity covering much of the planchet, strongest at 179 causing weakness on those digits. No verdigris or notable contact marks. The 6 in the date remains clear and the legends are nearly complete, only OF and UNI are no longer readable. Slightly glossy dark chocolate brown and olive steel. Extremely rare LDS, Breen state II late, with a strong die crack at TES causing a sunken retained cud break above the crack. Ex Clay Everhart-2007 EAC Sale, lot 180.



100. 1797 S-125 R5 VG10. Sharpness VF30 or better but dull from uniform extremely fine granularity. No marks or verdigris. Dull very dark steel and olive. MDS, Breen state II. The date and legends are bold except for strike weakness at D-S. Great detail; would have been a top cc com

The 2009 EAC Convention Sale, April 18, 2009

101. 1797 S-126 R3 AG3. A couple points sharper with light to moderate roughness on both sides, mostly on the left. No verdigris, a couple rim nicks at UN being the only notable marks. Slightly glossy dark olive with lighter brown highpoints. EDS, Breen state I. The date is easily readable and the legends are clear except for ITED-STA.



102. 1797 S-126 R3 F12. Sharpness VF35 but covered with small contact marks, including a small dig under the Y in LIBERTY and a dull rim nick over the E in STATES. Rather glossy reddish chocolate brown. EDS+, Breen state II, with clashmarks in the field at the throat but before any die cracks. Ex Tom Reynolds.



103. 1797 S-127 R4 VG8+. Sharpness F12 with traces of very light roughness on both sides, strongest in the field before the portrait where a single shallow pitmark shows before the nose. There are a couple small patches of minor verdigris left of the date and around ITE in UNITED. The only contact mark of any significance is an old, shallow "X" scratched into the field off the throat. Glossy chocolate brown delicately mottled with reddish chocolate tones. EDS, Breen state I. The date and legends are bold. Ex Jim Long-John Koebert.

104. 1797 S-133 R5 G4. Stemless Wreath. The obverse is slightly better, the reverse weaker. Both sides are covered with very fine roughness and there is some greenish verdigris on the lower part of the reverse, strongest on the leaves under UN. Just a few minor rim bruises, strongest at ME. Chocolate brown with darker olive on the lower reverse. The date is complete and easily readable although the 97 is weak, and the legends are nearly complete. MDS, before the die crack to the neck.



105. 1797 S-133 R5 VG10. Stemless Wreath. Sharpness VF30 with pitting in the right obverse field and deeper pitmarks around AMERICA plus other pitmarks scattered over the reverse. The remainder of the planchet is reasonably smooth and offers decent eye appeal. No verdigris or notable contact marks. Recolored frosty dark steel and chocolate brown. MDS, Breen state III. The date and legends are strong, and portions of the edge show diagonal reeding as often found on this and other die varieties of 1797 and 1798 cents.



106. 1797 S-133 R5 VG10. Stemless Wreath. Sharpness F15, perhaps even better on the obverse, but there is microscopic roughness around LIBERTY and near the rim before the portrait with similar very fine granularity covering most of the reverse. No verdigris. A dull nick on the neck and a trio of tiny rim nicks at the bottom of the reverse are the only notable marks. Mostly glossy chocolate brown, the reverse a few shades darker than the obverse. M-LDS, Breen state IV, with a clear die crack from the dentils above the bust to the lower part of the neck. The 97 is weakened by the die state but the date remains easily readable and the legends are complete. Ex Walter Reed.



107. 1797 S-134 R4 G6. A couple points better on the obverse, a couple points weaker on the reverse (which is typical for this variety due to the absence of a protective rim on the reverse but a relatively high one on the obverse). Glossy chocolate brown. No corrosion or verdigris, only a few contact marks. MDS, Breen state IV. The date is strong and the legends clear except for weakness at UNITED ST.

The 2009 EAC Convention Sale, April 18, 2009

108. 1797 S-139 R1 G6. Slightly sharper but extremely fine roughness covers the fields. No verdigris, and the only mark is a minor rim bruise at the bust tip. LDS. Dark olive and steel with lighter highpoints from a delicate cleaning. The date and legends are complete and strong.

109. 1797 S-140 R1 VG10. Double Struck. Sharpness VF30 but covered with extremely fine roughness. No verdigris and only a few trivial marks, including a pair of shallow pitmarks in the field behind the head. Dark olive and steel with slightly lighter highpoints. Double struck with a very slightly rotated offset between impressions, perhaps a half millimeter. The doubling is clearest in the dentils along the left side of the obverse and in the wreath, but with careful study you can find it over much of the design on both sides.

110. 1797 S-142 R5+ VG8. Sharpness F15 with light roughness in the fields and protected areas while the highpoints are smooth. No verdigris, only a few contact marks, including a dull rim nick over the E in LIBERTY and a small one left of the fraction. Rather glossy chocolate brown. The date is bold and the legends are strong. Ex Walter Reed 1/17/04-Colonel Steven Ellsworth Collection.

111. 1797 S-142 R5+ Fair-2. Slightly sharper with a couple dozen pitmarks on both sides on otherwise smooth, glossy chocolate brown surfaces. No verdigris or contact marks. The date is complete and easily readable though not strong and well over half the legends remain clear.



112. 1797 S-143 R5 VG10. Stemless Wreath. Five points sharper with a couple patches of shallow planchet erosion on the shoulder, another in the field before the face, and a half dozen short scratches in the field over the bust tip, plus a minor rim bruise at the N in UNITED. Recolored a mostly glossy chocolate and olive brown. MDS. Breen state II. The date is bold and the legends are strong. Ex Gordon Wrubel 8/72-John D. Wright Collection.

113. 1798 S-146 R5- G6. Style I Hair. Large 8. Sharpness VG10 but covered with very fine roughness, strongest in the fields and protected areas. Both sides have myriad very fine hairline scratches in the natural patina and there are three dull rim nicks at the top of the obverse. Slightly glossy light chocolate brown with darker olive brown toning in protected areas. MDS. The date and legends are complete and strong. Looks better than the description might imply.

114. 1798 S-147 R5- VG8. Style I Hair. Large 8. Sharpness VF25 but lightly corroded with a few shallow pitmarks on both sides. No verdigris or significant contact marks. Recolored frosty dark steel and chocolate. The date is bold and the legends are strong.

115. 1798 S-147 R5- AG3. Style I Hair. Large 8. A couple points sharper but dark and covered with uniform very fine granularity. No verdigris, a couple rim bruises at OF-A the only significant marks. Dull very dark steel and olive. The date is clear and the legends are easily readable except for UNITE, which is faint.



116. 1798 S-148 R2 F12. Style I Hair. Large 8. Sharpness VF25 with areas of minor roughness on both sides, strongest in the field before the face and around ERICA. There are a couple traces of verdigris that do not catch your eye, and the only notable contact mark is a dull nick under the I in LIBERTY. Recolored a rather glossy chocolate brown with darker olive brown in protected areas. M-LDS. Breen state VI, with a strong cud break at ERTY.

117. 1798 S-149 R4+ AG3. Style I Hair. Large 8. Several points sharper but covered with fine to moderate roughness. No verdigris, but there are several contact marks. These include a rim dent at LI, a rim nick left of the L, a vertical scratch through the lower curls, and a dull dent at the back of the head that causes a bulge at CE in CENT. Slightly glossy dark olive and chocolate. The date is strong and the legends are clear.



119. 1798 S-155 R3 F15. Style I Hair. Small 8. Reverse of 1796. Ten points sharper with uniform microscopic roughness under a glossy dark chocolate and olive brown patina. No marks or verdigris. The date is bold and the legends are strong. M-LDS, Breen state VI. The obverse is misaligned to K-11 while the reverse is properly centered on the planchet.



120. 1798 S-157 R2 VF20. Style I Hair. Small 8. Five points sharper but there is a fine hairline scratch from just below the L in LIBERTY down through the ear to the cheek where it fades away, plus a shorter hairline scratch in the field under the chin. The only other marks of any consequence are a nick-like pre-striking planchet void in the field over the upper ribbon end and a very light rim bruise below the lowest curl. Attractive glossy chocolate brown. M-LDS, Breen state III, with an irregular die crack from the dentils to the neck with fine die rust surrounding this crack, plus minor blunting inside the wreath as described by Breen for the later die state. Ex Chris McCawley 3/04-Clay Everhart.

118. 1798/7 S-151 R3 VF20. Overdate Small 8 over 7. Nice glossy chocolate brown. No corrosion or verdigris, only a few minor contact marks consistent with the grade. A very tiny pitmark or pinprick in the field before the eyebrow and a thin vertical nick near the hair under the earlobe are the best identifying marks. M-LDS, Breen state VII. The date is bold and the overdate is obvious. The legends are strong and evenly struck. An attractive mid-grade example of the variety. Ex Bowers & Merena 11/11/99.311-Colonel Steven Ellsworth Collection



121. 1798 S-158 R4 VG10. Style I Hair. Small 8. Sharpness VF30 or a bit better but there are obvious rim dents under the bust tip and over LIB with opposing rim dents at F-A and NIT. It's as if this cent got squeezed on opposite sides of the planchet. The remainder of this cent is smooth and very attractive with virtually no marks. Glossy dark olive brown with lighter chocolate highpoints. The date and legends are bold. MDS, Breen state IV. Ex Walter Reed.

The 2009 EAC Convention Sale, April 18, 2009

122. 1798 S-158 R4 G5. Style I Hair. Small 8. Sharpness F12 but slightly rough, then burnished and retoned glossy dark steel and olive with reddish brown in protected areas. There are a half dozen small pitmarks remaining on the obverse and fine roughness in protected areas on the reverse. MDS, Breen state V early, with a small cud break connecting the left top of the T in UNITED to the dentils above (an intermediate die state not mentioned in the Breen book). The date and legends are complete and clear.

123. 1798 S-159 R3 VG8. Style I Hair. Small 8. Sharpness VF20 but there are several rim bruises on both sides and traces of extremely faint roughness on the reverse. Recolored a rather unnatural appearing slightly glossy reddish chocolate and steel. M-LDS. The date and legends are strong.



124. 1798 S-162 R4 VG10. Style I Hair. Small 8. Five points sharper but covered with microfine roughness that's well hidden under a glossy chocolate brown patina. No verdigris and only a few minor marks, including some faint hairline scratches on the obverse and a light rim bruise opposite the tip of the nose. MDS, Breen state II. The date and legends are bold.

125. 1798 S-162 R4 G5. Style I Hair. Small 8. Glossy steel and chocolate brown with a half dozen spots of darker olive toning on the obverse. The surfaces are decent but not perfectly smooth in the fields and protected areas. No verdigris, only some trivial contact marks consistent with the grade. The date is bold and the legends are complete with some weakness at STATES OF. MDS, Breen state II.



126. 1798 S-163 R4 VG8. Style I Hair. Small 8. Glossy chocolate brown with darker olive toning on the left of each side. No corrosion or verdigris. The notable marks are small rim bruises at RT in LIBERTY, over TES in STATES, and at ER in AMERICA. E-MDS, Breen state II. The date is bold and the legends are clear. Ex 2007 EAC Sale, McCawley & Grellman Auctions 4/28/07:221.

127. 1798 S-166 R1 VG8. Style II Hair. Large 8. Slightly sharper but lightly cleaned and nicely retoned glossy steel and light olive brown. No roughness, only a few tiny nicks on the cheek. LDS. The date and legends are clear.

128. 1798 S-167 R1 G6. Style II Hair. Large 8. Sharpness VG10 with very fine granularity covering both sides and myriad hairline scratches on the obverse, mostly on the portrait. Rather glossy chocolate brown, lighter on the devices than the fields. EDS, Breen state I. Ex John Cloutier.



129. 1798 S-167 R1 F12. Style II Hair. Large 8. Glossy chocolate and steel brown. Smooth surfaces with just a few minor marks, including a light rim bruise at the L in LIBERTY and a faint diagonal hairline scratch through the mouth. LDS, Breen state VI, with several die cracks on the obverse and a small but strong cud break connecting the first T in STATES to the rim above.



130. 1798 S-171 R4 F12. Style II Hair. Small 8. Sharpness VF20 with fine hairline scratches on the obverse of an otherwise smooth, very attractive cent. Glossy chocolate brown. MDS, Breen state III, with a cud break left of the L in LIBERTY. The date and legends are bold. Ex Bowers & Merena 3/21/96:215-Colonel Steven Ellsworth Collection.

131. 1798 S-172 R2 VG8. Style II Hair. Small 8. Glossy chocolate and olive brown. Smooth except for some microscopic roughness at the top of the reverse. No verdigris or notable marks. MDS, Breen state IV. Ex Walter Reed.

132. 1798 S-176 R4 VG7. Style II Hair. Small 8. Sharpness VF25 but moderately pitted with a few small patches of verdigris adhering to both sides. A dull scrape through the E in STATES is the only significant contact mark, but this cent would be ugly without the mark. Rather glossy dark olive and steel with lighter chocolate brown highpoints. Ex Terry K. Stell, McCawley & Grellman Auctions/Superior 2/18/02:1218-David Green.



133. 1798 S-177 R4+ VG7. Style II Hair. Small 8. Clipped Planchet. Glossy chocolate brown. Smooth surfaces except for an area of minor roughness at OF-A. There is an old pinscratch in the field along the profile and another down the neck, plus a small rim bruise at the first S in STATES. M-LDS, Breen state IV. The date is bold and the legends are complete. A small planchet clip is located left of the date and over AT in STATES, as struck.

134. 1798 S-179 R2 VG8. Style II Hair. Small 8. Sharpness F15 with several contact marks on the obverse, including a disjointed scratch up through the left side of the 8, a dull mark under the earlobe, and a couple short scratches left of the hair ribbon. Recolored slightly glossy dark steel and olive with traces of reddish brown from the cleaning showing through in protected areas. M-LDS, Breen state IV.



137. 1798 S-182 R4 F12. Style II Hair. Small 8. Sharpness near VF30 but there are numerous old scratches on both sides, strongest at the top of the reverse. A shallow pitmark left of the O in OF is the only other significant mark on otherwise smooth, attractive surfaces. Glossy light chocolate brown with a few small spots of darker chocolate and olive brown toning in the field before the portrait. MDS, Breen state II.



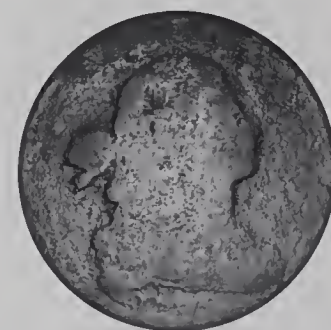
138. 1798 S-183 R5 VG8. Style II Hair. Small 8. Double Profile. Sharpness F12 but covered with extremely fine roughness. No verdigris, but there are some marks, including a dull scrape or dig at the bottom of the D in UNITED and another on the ribbon below CE in CENT. Slightly glossy dark olive and steel. The date and legends are complete and clear. A strong double profile (from die bounce) extends from the top of the forehead down to the bottom of the chin. Ex John Cloutier



135. 1798 S-180 R5+ NGC graded VG10. Style II Hair. Small 8. Slightly glossy dark chocolate and olive with lighter chocolate brown toning on the devices. Decent surfaces, a small patch of very fine roughness in the field before the neck is the only exception. No verdigris or notable contact marks. The bottom of the date and top of STATES are fading into the rim but everything else is complete and easily readable. EDS, Breen state I, before any rim cud breaks on the reverse. **Our grade is G5.**

136. 1798 S-180 R5+ Fair-2. Style II Hair. Small 8. A point or two sharper but covered with fine roughness. Faint hairline scratches are mixed into the patina and a few minor rim nicks show on both sides. Slightly glossy dark steel brown and olive with a bit of reddish chocolate added to the mix. MDS, Breen state II, with a cud break at TATE. The date is faint but readable and most of the legend is visible.

139. 1798 S-186 R2 VG8+. Style II Hair. Small 8. Slightly sharper but lightly cleaned and nicely retoned a rather glossy chocolate and steel brown. Small nicks are scattered over both sides, none notable or distracting. M-LDS, Breen state VII.



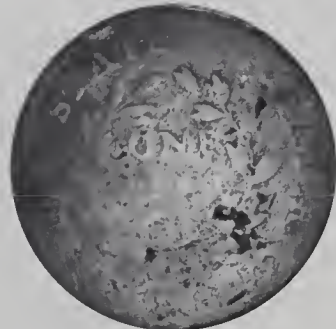
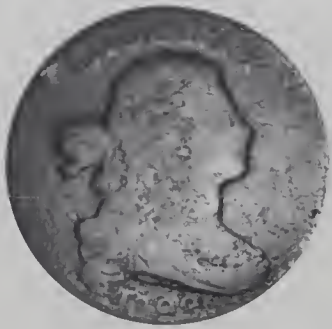
140. 1798 S-186 R2 AG3. Style II Hair. Small 8. Terminal Die State. Slightly sharper but covered with very fine porosity. No verdigris or marks. The date is weak but easily readable and the legends are nearly complete. Slightly glossy chocolate and olive brown. Extremely rare terminal die state, Breen state X, with a large cud break at ITED.



141. 1798 NC-1 R7+ G6. Style I Hair. Small 8. Sharpness at least F12 but covered with moderate corrosion under a slightly glossy very dark olive and steel patina. No verdigris, and the only contact mark of any significance is an old, dull scratch in the field before the neck. The date and legends are complete and clear except for weakness at the E in LIBERTY as that letter was not properly struck up. Nice detail for this new discovery, the 7th example known and a highlight of this EAC Sale.



142. 1799/8 S-188 R4 F15. Overdate 9 over 8. Sharpness at least VF30 with a scuff of fine parallel scratches across the obverse devices, the scratches extending from WNW to ESE. Otherwise this cent is very attractive with smooth, hard surfaces and only a few minor contact marks, including a dull diagonal nick over the E in CENT. Both sides are covered with a thin coating of lacquer or wax, most likely added to help minimize the impact of the obverse scratches. Glossy dark chocolate brown with lighter chocolate toning on the devices. Whenever a cent is coated with wax or lacquer, there is always a suspicion that the color is not original, and that may be true for this cent as well, at least for the obverse. Nonetheless, the toning is attractive and the eye appeal is nice in spite of the obverse scratches. MDS, Breen state III. Called VF25 net F15 in the Bland census. Noyes says VF25 net VG8, his photo #34682. Ex a Maryland consignment, New Netherlands Coin Co. #51, 6/58:279-Hollinbeck Coin Co., 1964 ANA Sale. Federal Brand Enterprises, lot 72-Hollinbeck Kagin Coin Co. MBS #285, 9/69:986-Hollinbeck Kagin Coin Co.-Kagin's Numismatic Auctions #310, 10/77:52-Kagin's-unknown-1995 ANA Sale, Heritage, 8/17/95:5582-Gary Parretti (Long Island Numismatics)-Ronald Cooper 7/14/96-Colonel Steven Ellsworth Collection.



143. 1799 S-189 R2 G4+. The obverse is a couple points nicer while the reverse is a bit weaker. The surfaces are slightly rough but there is no verdigris. The notable marks are a dull rim nick left of the L in LIBERTY, a smaller one over that T, and a collection of rather deep digs in the wreath under RIC in AMERICA. The date is easily readable, even relatively strong for the most part, but the bottom edge of each digit is starting to flow into the rim below. The reverse legend is readable but not strong, and portions are faint. The obverse is a somewhat glossy light chocolate brown. The reverse is mostly glossy dark olive brown with lighter chocolate highpoints and splashes of reddish chocolate. Not perfect, of course, but not bad for the grade, and the relatively strong date is a big plus.

144. 1799 S-189 R2 Basal State-1. Rather glossy dark chocolate brown. The details are slightly better than the assigned grade, but the planchet is bent and shows a few contact marks, including a couple digs at the top of the head. The date is easy to determine, and the second 9 is clearest of all while only the upper half of the 179 is visible. LIBERTY is weak but readable and only a few of the reverse details remain visible. An inexpensive but unquestionably genuine 1799 cent.

145. 1799 S-189 R2 Basal State-1. Lightly cleaned with coppery tan toning on the devices and dark olive in the protected areas. The surfaces are lightly corroded, and the corrosion has distorted some of the details. The upper half of the date remains visible but LIBERTY is mostly gone and the only reverse legend still readable is OF AMERICA. Another good hole filler for this difficult date.

146. 1800/798 S-190 R3 G5. Overdate 800 over 798. Style I Hair. Glossy chocolate and steel, the devices a few shades lighter than the fields. The date is clear and the legends are complete. No significant defects.



147. 1800/179 S-193 R4 VG10. Overdate 180 over 179. Style II Hair. Sharpness VF20 or a bit better but there are a dozen dull pinpricks scattered over the obverse. The planchet is covered with uniform very fine granularity that's mostly hidden under a rather glossy dark chocolate and olive brown patina. No verdigris. MDS, Breen state III. The date is bold and the overdate is obvious. Ex Jim Long-John Koebert.



148. 1800/179 S-193 R4 VG10. Overdate 180 over 179. Style II Hair. Sharpness VF25 but lightly corroded, strongest on the obverse. No verdigris. The only notable mark is a dull nick at the right top of the E in CENT. Rather glossy dark chocolate and steel. Probably recolored. The date is bold and the legends are strong. MDS, Breen state III.



149. 1800/179 S-194 R3 VF25. Overdate 180 over 179. Style II Hair. Sharpness EF45 with a few fine scratches in the hair and a couple more in the field over the ribbon, plus one across the throat and a tiny one in the field before the nose. A collection of tiny pinpricks high on the bust and traces of roughness above and below the 1 in the date are the other notable marks. The remainder of the planchet is smooth and offers excellent eye appeal. Uniform glossy chocolate brown, possibly recolored but done with great skill. Frosty luster shows in protected areas of the reverse. Sharply struck E-MDS, Breen state III. The overdate feature is bold. Ex Harry Tileston.



150. 1800/179 S-195 R5 F15. Overdate 180 over 179. Style II Hair. Ten points sharper with uniform microscopic granularity under a rather glossy dark chocolate and olive patina. The obverse is smoother than the reverse, but there is no verdigris on either side. The only notable mark is a light rim bruise at ER in LIBERTY. E-MDS, Breen state II. The date and legends are strong and the overdate is clear. Ex Henry C. Hines-Dr. William H. Sheldon-unknown-Steve Ivy Numismatic Auctions, The Phoenix Sale, lot 45-McCawley & Grcllman Auctions/Superior 9/6/04:1592-Colonel Steven Ellsworth Collection.



153. 1800 S-199 R4 VG8. Mostly glossy dark chocolate brown with lighter chocolate toning on the devices. The only marks are a pinprick in the field off the tip of the nose and an old diagonal scratch at IT in UNITED to the N in ONE. LDS. Breen state IX, with a small cud break connecting the F to the dentils above. The date is bold and the legends are strong except where affected by swelling on the reverse.



151. 1800 S-198 R5+ AG3. Very slightly sharper with numerous minor contact marks, including a couple dozen light hairline scratches on the obverse and a couple light rim bruises on both sides. Glossy chocolate brown. EDS. The date is complete and clear and the legends are full except for weakness at much of UNITED STATES. Ex Chester Poderski 5/71-John D. Wright Collection.

152. 1800 S-198 R5+ AG3. Slightly sharper but lightly corroded. No verdigris, only some faint hairline scratches that blend perfectly into the slightly glossy chocolate and olive brown toning. The date and legends are not strong but they are complete and easily readable except for OF, which is faint. MDS.

154. 1800 S-200 R3 AG3. Off Center. A couple points sharper but dark and rough with several contact marks in the mix. The most notable marks are a half dozen dull digs on the obverse, a strong rim nick at the E in LIBERTY, and a rim dent at S-O. Very dark olive and steel. The date is strong and the legends are mostly clear. Struck slightly off center to K-1. In addition, there was a second strike 99% off center that created a tiny tab at the edge before the mouth. The dentils from the off-center strike are clearly visible in this little tab. Too bad about the ugly condition because this is a neat double error.



155. 1800 S-201 R4+ VG7. A point or two sharper with extremely fine roughness covering the fields under a mostly glossy dark olive and steel patina. There is a small spot of raised reddish verdigris in the field above the upper end of the hair ribbon. The notable contact marks are a few dozen tiny pinpricks on the portrait, a fine diagonal hairline scratch from the shoulder to the dentils left of the lowest curl, and a dull rim nick at ST in STATES. E-MDS, Breen state II. The date and legends are bold.



156. 1800 S-202 R4+ VG10. Sharpness VF20 with minor roughness in the field above the bust and a few dull but deep scratches left of the hair ribbon. The rest of the planchet is quite nice for the grade with no significant defects. The reverse is very attractive. Glossy dark olive and steel with chocolate highpoints. E-MDS, Breen state II early, with only a trace of swelling at STA. Ex Blackburn & Blackburn (Edmonds, WA) 7/74-John D. Wright Collection.

157. 1800 S-202 R4+ G4. A couple points sharper but uniformly granular. No verdigris, and the only mark is a dull rim nick over the M in AMERICA. Partly glossy dark chocolate MDS, Breen state II late. The date and legends are complete, and clear except for STATE, which is blunted by die swelling.

158. 1800 S-202 R4+ G4+. Glossy chocolate brown with smooth, attractive surfaces for the grade. No defects, just honest wear. LDS, Breen state VII. The die failures are strong on both sides. The date is clear and the legends are clear where not affected by the severe die swelling on the reverse.

159. 1800 S-204 R4 G6. Glossy chocolate blending to olive brown in protected areas. No corrosion or verdigris, only some contact marks. These include several faint parallel hairline scratches on the obverse, a long nick in the field left of the ribbon, and a scrape on the edge over the l in AMERICA.



160. 1800 S-206 R3 VF25+. Sharpness EF40 with the initials "ST" lightly and rather crudely scratched into the field before the portrait. These initials are relatively large but not strong, so you have to catch the light just right to see them clearly. Otherwise the only notable defect is some minor roughness and verdigris at TAT in STATES. The obverse is frosty chocolate and bluish steel brown while the reverse is a mottled mix of reddish chocolate brown and light olive with hints of bluish steel overtone. LDS, Breen state III. Ex Doug Bird-Michael Kramer Doug Bird-Gary Ruttenberg, McCawley & Grellman Auctions 8/17/96:197 Colonel Steven Ellsworth Collection.



161. 1800 S-208 R3 VF20. Sharpness VF30 with traces of extremely faint roughness in the fields and protected areas, but there is no verdigris and the surfaces remain glossy. There are some scratches in the field near the profile, a horizontal one on the cheek, and a few more in the field behind the ribbon. A rim nick shows at BE and about a dozen more very tiny rim nicks are spaced around the reverse. Glossy chocolate brown mottled with darker olive brown. LDS, Breen state IV, with a cud break at TY extending well to the right with a smaller rim cud break off its right end. Called VF35 net VF20 and tied for CC#9 in the Bland census. Ex Larry Whitlow 4/67-R. E. Naftzger, Jr., New Netherlands Coin Co., 11/73:523-Bob Vail 11/21/88-Del Bland-Chris McCawley, McLaughlin & Robinson Auctions #4392, 9/89:293-Colonel Steve Ellsworth Collection.



162. 1800 S-211 R3 F12. Sharpness VF20 with very fine granularity covering the surfaces. No verdigris, and the only marks are a few faint hairline scratches in the field before the neck, all hidden in the natural toning. Slightly glossy olive and chocolate brown. M-LDS, Breen state VII.

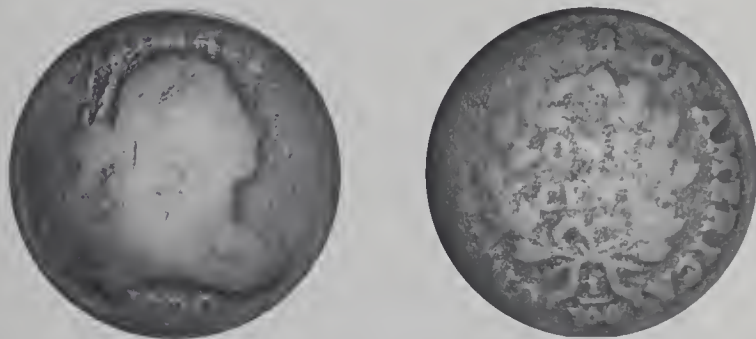


163. 1800 S-211 R3 VG7. Sharpness F15 or better but covered with uniform very fine granularity. No marks or verdigris. Slightly glossy dark steel brown and chocolate. LDS, Breen state VIII. The date and legends are bold.

Rare 1800 NC-2



164. 1800 NC-2 R6+ G4. Overdate 180 over 179. Style II Hair. A point or two sharper but dull and covered with uniform microscopic roughness. There are traces of very fine verdigris dusted into a couple of the protected areas and a few minor contact marks, all consistent with the grade. Dark olive and steel. LDS, Breen state II, with a thin cud break at the rim above the bust. The date is clear and the overdate feature is visible. The legends are complete except for AMERICA due to an uneven strike on that side.



165. 1800 NC-3 R6- AG3. Slightly glossy chocolate with darker olive in protected areas. Faint roughness covers the fields, and the area from LI down to the ribbon is distorted a bit by the effects of corrosion. The date is complete and easily readable but not strong and the legends are nearly complete. The spike up from the top of I in AMERICA (the diagnostic for this variety) is weak but clearly visible. Ex Richard Picker 1/97-Jim Long 8/98-Walter Reed.

166. 1801 S-213 R2 G7. Several points sharper but dull from extremely fine granularity that covers the fields and protected areas. No marks or verdigris. Dark steel brown with lighter steel brown in protected areas. The date and legends are clear.

167. 1801 S-220 R3 VG10. Error Fraction 1/000. Very attractive glossy light chocolate brown. Possibly lightly smoothed and retoned, but the eye appeal is excellent and the color is quite appealing. Only a few trivial contact marks, including a tiny planchet chip just left of the eye and a nick on the first 0 in the error denominator (000). E-MDS, Breen state II. The date and legends are strong and the error fraction feature is obvious.



168. 1801 NC-1 R6 VG8+. A few points sharper with several light rim bruises on both sides and some tiny nicks scattered over the obverse, plus a few other small contact marks added to the mix. No roughness or verdigris. Glossy chocolate brown. The date is bold and the legends are clear. MDS, Breen state I, before the cud break that connects TES to the rim.



169. 1801 NC-1 R6 G5. A point or two sharper but covered with microscopic roughness. No verdigris, and the only mark is a small planchet chip just left of the E in LIBERTY. Slightly glossy dark olive and chocolate. The date is bold and the legends are mostly strong and all readable. LDS, Breen state II, with a cud break connecting TES to the rim above.



170. 1802 S-226 R3 VG10+. Several points sharper but extremely fine roughness covers the obverse, strongest in the fields. The reverse is smooth and attractive. No verdigris, and the only mark is a pitmark in the field under the hair ribbon. Steel and chocolate brown, the obverse rather matte while the reverse is glossy. Rare M-LDS, Breen state IV, with a clear die crack arcing across the field from the tip of the nose to the rim opposite the chin. Called F12 nct VG10 in the Noyes census, his photo #23337. Ex Henry C. Hines-Homer K. Downing, 1952 ANA Sale, lot 1897-C, Douglas Smith.



172. 1802 S-229 R2 VF25. Ten points sharper with traces of verdigris at UNITE with more tucked into protected areas around the wreath. Otherwise the surfaces are smooth and quite attractive, free of notable defects. Glossy dark olive with chocolate highpoints. Frosty luster shows through in the fields and protected areas. EDS, Breen state I.



173. 1802 S-231 R1 EF40. Five points sharper but there is a light rim bruise at the B in LIBERTY and a tiny scratch on the throat. Otherwise the surfaces are virtually flawless and the eye appeal is excellent. Lustrous dark steel and chocolate brown. LDS, Breen state IX. A very nice example of a common die variety.

171. 1802 S-227 R2 NGC graded AU50. Glossy chocolate and dark steel with frosty lighter steel brown toning in protected areas on the obverse. Traces of mint frost remain visible in protected areas on the reverse. No roughness, only trivial contact marks on smooth, attractive surfaces. LDS, Breen state III. Our grade is VF30.

The 2009 EAC Convention Sale, April 18, 2009

174. 1802 S-234 R3 VG8+. Glossy light olive brown and chocolate. Nice for the grade, a tiny nick in the field behind the head the only notable defect. MDS, Breen state IV. The date and legends are strong, and the "Dripping Paint" die state feature over BERTY is clear.



176. 1802 S-236 R1 VG10. Ten points sharper with several marks on the obverse, including an "X" scratched into the hair right of the ribbon and sharp nicks at Y, the throat, and in the field over the bust. Otherwise the surfaces are smooth and offer excellent eye appeal. Glossy medium brown with darker chocolate and steel toning on the devices and frosty golden light brown in protected areas. MDS.



175. 1802 S-236 R1 EF40. Sharpness near mint state with frosty luster showing in the protected areas on both sides. However, there are traces of fine carbon scattered over both sides, mostly on the highpoints. A dull scratch extends from the hair under B in LIBERTY across the hair and eyebrow into the field before the nose where it fades away. A planchet chip is located between the T & E in UNITED. Frosty reddish brown and chocolate mottled with darker steel. LDS, Breen state IX, with a cud break joining ST to the rim above. This cent was found by John Scott in the wall of an annex to a home located at 18 Whipple Avenue in Smithfield, RI. The annex had been built in 1802. The coin was found during renovations to the annex and subsequently sold on Ebay to Henry T. Hettger.



177. 1802 S-237 R2 VF35. Attractive glossy chocolate brown with frosty tan and light brown in protected areas. Smooth and attractive with only a few trivial contact marks, including a barely visible rim bruise under the 1 in the denominator. E-MDS, Breen state III, with the usual incomplete strike on the face and at the opposing leaves under RIC.

The 2009 EAC Convention Sale, April 18, 2009



178. 1802 S-237 R2 F15. Five points sharper with a large, dull nick or planchet depression in the field under the chin. Otherwise this cent is free of notable defects, nearly choice for the grade. Glossy chocolate and steel brown, the highpoints a couple shades lighter than the fields. MDS, Breen state V late.



181. 1803 S-245 R3 VF20. Ten points sharper with traces of microscopic roughness on the reverse. The only mark is a small pit over the left top of the N in ONE. Glossy dark steel and chocolate, possibly recolored. Covered with a thin coating of lacquer. The obverse offers excellent eye appeal; the reverse not as nice. MDS, Breen state II.



179. 1802 NC-2 R6 AG3. Sharper by 2 or 3 points but the edge of the planchet has been carefully rolled to create a high wire rim all the way around both sides. Otherwise everything inside the rims is smooth and attractive, free of any notable defects. Glossy steel brown and chocolate. Possibly lightly cleaned and retoned, but the color is attractive and not at all unnatural. The bottom of the date and top of the reverse are weakly struck causing STATES OF to be missing, but the rest of the date and legends are clear. The die crack at ERTY is clear and the attribution is certain. Ex Merrill Stuut (unattributed) 10/07-Frank Plennert (who recognized the variety).



180. 1803 S-244 R4 F15. Sharpness VF30 or a bit better but covered with fine granularity, strongest at ERTY and in the field left of the upper end of the hair ribbon. No verdigris or marks. Slightly glossy chocolate and olive brown.

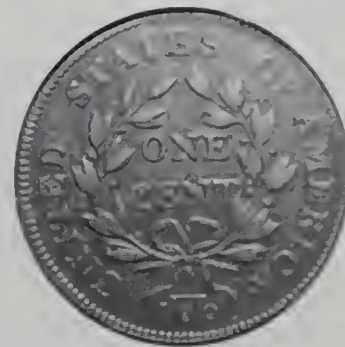


182. 1803 S-245 R3 VF20. Sharpness EF40 but covered with extremely fine roughness under a frosty dark steel and olive brown patina. No verdigris, but there are a few light hairline scratches on the portrait, all blended perfectly into the toning, and a small pitmark following the second A in AMERICA. LDS, Breen state III, with a strong eud break at RICA

The 2009 EAC Convention Sale, April 18, 2009



183. 1803 S-250 R3 F15. Glossy chocolate and steel. Smooth surfaces with only a few light contact marks, including some small nicks in the field around the hair ribbon and a thin nick high above the N in ONE. LDS.



187. 1803 NC-1 R5+ NCS graded VF Details, Corroded, Scratched. Sharpness VF20 with a short horizontal scratch from the lips into the field and another vertical one down from the lips into the field before the neck. A large, dull vertical nick is located in the hair under B and another smaller one is on the bottom of the neck. There are a few additional minor marks as well, none notable. The surfaces appear decent but a bit dirty (rather than "corroded" as claimed by the NCS folks) and in need of a proper brushing to bring out the gloss. Dark chocolate and olive brown. The date and legends are bold. MDS. Breen state II, with a fine die crack through NITE. **Our grade is net VG10.** Tied for CC#6. Ex Heritage sale #1108, lot 1793.



184. 1803 S-259 R4 VG10. Large Fraction. Sharpness VF25 with extremely fine granularity covering the fields and a scuff of hairline scratches across the portrait. Slightly glossy dark olive and steel with lighter chocolate on the devices. EDS. Breen state I. Ex Walter Reed.

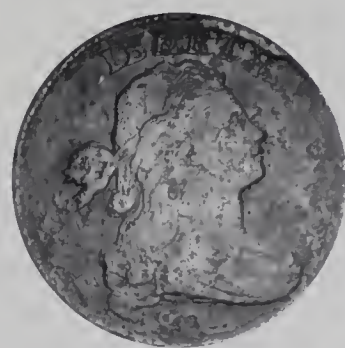


188. 1803 NC-1 R5+ AG3. A couple points sharper but dull dents cover the planchet, and some of them are strong enough to cause a slight bulge on the opposing side. No corrosion or verdigris. Slightly glossy steel brown and chocolate with darker olive and steel toning in the fields and protected areas. The 18 is weak but the date remains easily readable and the legends are nearly complete.

185. 1803 S-260 R1 F12. Large Fraction. Glossy chocolate brown. No roughness or verdigris, only minor contact marks. A few small nicks in the field before the face and a very light rim bruise right of the eye are the notable defects, all consistent with the grade.



186. 1803 S-265 R4 VG8. Large Date and Fraction. A couple points sharper with too many contact marks for the sharpness grade, including four small digs at the face and field at right, a light rim bruise under the 03 in the date, and a faint horizontal hairline scratch across the bottom of the neck into the field at left. Mostly glossy steel brown and chocolate. EDS. Breen state I, before any die cracks. The date and legends are strong except for weakness at STATE due to a relatively weak strike in that area.



189. 1804 S-266c R2 G4. Sharpness F15 but dark and moderately corroded. The only verdigris is a speck of greenish stuff just right of the fraction. No notable contact marks. Dark olive and steel. The obverse is slightly glossy while the reverse is matte. LDS. Breen state IV, with strong cud breaks at RTY and MERIC. The date and legends are complete and easily readable.

The 2009 EAC Convention Sale, April 18, 2009

190. 1804 S-266c R2 Basal State-1. Slightly sharper but crudely holed in the center, then plugged with an equivalent lack of skill. Then someone had the good sense to clean it, and much of the coppery tone remains with darker olive and steel toning in protected areas. The upper two thirds of the date remains visible and the cuds over RTY and MERIC are clear. At least half the legends are present. Well, it's genuine and it fills a tough hole in the collection. LDS, Breen state IV.



191. 1805 S-267 R1 F12+. Sharpness VF20 with traces of extremely fine roughness in the fields, a scuff of faint hairline scratches on the cheek and chin, and a small rim bruise at IC in AMERICA. Rather glossy olive and dark steel mixed with chocolate brown. MDS.



192. 1805 S-269 R1 F12. Nice glossy light olive brown and chocolate. No roughness, only a few trivial marks, including a small rim bruise just right of the F in OF and a small rim nick over that F. MDS.

193. 1806 S-270 R1 F12. Sharpness VF20 or a bit better but dull from uniform extremely fine granularity. No verdigris or contact marks. Dark steel and olive, slightly glossy on the obverse but dull on the reverse. MDS.

194. 1807 S-275 R3 VG7. Large Fraction. Sharpness F12 but dull from fine roughness, strongest on the obverse. No verdigris. A small dig at the right top of the N in CENT is the only notable mark. Slightly glossy chocolate and dark steel. The date and legends are bold.



195. 1809 S-280 R2 ANACS graded F12. Turban Head. Nice glossy chocolate brown with lighter brown toning in protected areas on the reverse. Smooth and attractive. The only mark is a barely visible rim bruise above star 7 and another at TE in UNITED. LDS, Breen state VII. **Our grade is F12.**

196. 1809 S-280 R2 G5. Turban Head. Clipped Planchet. A couple points sharper but the fields are covered with fine roughness. A thin nick on the rim between stars 9 & 10 is the only notable mark. Slightly glossy dark olive brown with lighter chocolate toning on the devices. A small planchet clip shows at stars 10-11 and ME, as struck.

197. 1810 S-283 R2 VG7. Turban Head. A couple points sharper but cleaned and retoned glossy steel brown and light chocolate with frosty artificial red remaining in protected areas. No roughness, only minor marks, including a tiny rim bruise under star 13. MDS.



198. 1810 S-284 R3 VF25. Turban Head. Sharpness EF40 but recolored glossy light chocolate and steel on the obverse, but the reverse is a less attractive mottled mix of medium brown and darker reddish chocolate. Faint hairlines from the cleaning show through the toning on the reverse. There are traces of corrosion and verdigris near the dentils above the head and microscopic specks of verdigris around the U in UNITED. No contact marks. EDS, Breen state I. Struck very slightly off center to K-5.



199. 1811/10 S-286 R3 VG7. Overdate 11 over 10. Turban Head. Sharpness F15 but lightly corroded. No contact marks, but there are traces of shallow greenish verdigris in a few protected areas on the reverse. Dark reddish chocolate and olive. The date is strong and the overdate is clear. Ex John D. Wright date collection.

200. 1811/10 S-286 R3 G4. Overdate 11 over 10. Turban Head. A couple points sharper but burnished and retoned glossy chocolate and olive brown. The burnishing is strongest on the neck where a mark was removed. Otherwise the eye appeal is decent for the grade and the overdate is clear.



201. 1812 S-288 R2 F15. Large Date. Turban Head. Five points sharper with a large, dull nick in the field right of star 2. Otherwise only minor contact marks consistent with the grade and no trace of roughness or verdigris. Rather glossy dark steel brown and chocolate. LDS, Breen state III.

202. 1812 S-291 R2 G6. Small Date. Turban Head. Slightly sharper but lightly corroded, strongest on the reverse where there are traces of greenish verdigris. No contact marks. Rather glossy dark chocolate and olive brown. The date is strong and the legends are clear.

203. 1813 S-292 R2 VG10. Turban Head. Sharpness VF30 but covered with microscopic roughness. No marks or verdigris. Slightly glossy light olive and chocolate brown. LDS. Removed from a SEGS slab graded VF30 porous (SEGS label included).



204. 1813 S-292 R2 VF30. Turban Head. Attractive glossy light olive and chocolate brown. Smooth surfaces, free of any hint of corrosion or verdigris. No significant marks. Excellent eye appeal for the grade. MDS. The obverse is slightly misaligned to K-5.5 while the reverse is properly centered on the planchet.

205. 1813 S-293 R2 VG8. Turban Head. Sharpness F12 but covered with fine roughness. No contact marks, just a couple very small specks of greenish verdigris on the obverse. MDS. The date is bold and the legends are clear.

The 2009 EAC Convention Sale, April 18, 2009



206. 1814 S-294 R1 F12. Crosslet 4. Turban Head. Attractive glossy chocolate brown. No roughness or verdigris, only a few small contact marks consistent with the grade, including couple dull nicks over the O in ONE and CE in CENT. MDS.

207. 1814 S-295 R1 G6+. Plain 4. Turban Head. Double Struck Brockage Maker. The obverse is G6 while the reverse is VF30 sharpness but granular and net VG8. No verdigris or marks. Dark steel brown with reddish chocolate tones in protected areas of the reverse. EDS. This cent was double struck on the reverse with a rotation between impressions equal to the width of a letter in the legend outside the wreath. The doubling is clearest at CA in AMERICA, but it is present everywhere on that side. The obverse was not struck twice by a die but rather was pressed into a new blank planchet during the second strike creating an incuse brockage impression on that planchet. The obverse displays the usual telltale puffiness of a brockage maker and the details on that side are blunted, hence the vast difference in sharpness grade between the two sides.

208. 1814 S-295 R1 G4. Plain 4. Turban Head. Counterstamped. Glossy chocolate brown with smooth, attractive surfaces. Counterstamped on the portrait with "N.S" raised inside an incuse scalloped rectangle. The letters of the counterstamp are 4 millimeters high, and the stamp is strongly impressed into the cent causing minor bending in the planchet.



209. "1815" made from an 1813 S-293 VF20 but . . . Glossy light olive with reddish chocolate in protected areas. The 3 in the date was carefully altered to a 5 to create this elusive date. The alteration was not accomplished with a great level of skill as fine but obvious scratches remain in the field around the date. The color is, of course, not original, but it is decent.

210. Group of 5 Early Dates, 1794-1803. Includes 1794 S-22 BS-1, 1800 S-200 AG3, 1801 S-221 (corrected fraction 100 over 000) AG3, 1802 S-228 (error fraction 1/000) G4, and 1803 S-261 Fair 2. Some are sharper with defects. Lot of 5 coins.

211. Group of 4 Early Dates, 1797-1803. Includes S-130 AG3, 1797 S-138 G4, 1800 S-208 AG3, and 1803 S-246 EDS AG3. A couple are sharper with defects. Lot of 4 coins.

212. Trio of Early Dates, 1798-1803. Includes 1798 S-174 AG3, 1800/179 S-194 G4, and 1803 S-258 G5. A couple are sharper with defects. Lot of 3 coins.

213. Group of 4 Early Dates, 1798-1807, all culls. Includes 1798, 1800 (2), and 1807/6. All have a readable date. Lot of 4 coins.

214. Group of 9 Cents, all culls. Seven are Draped Bust early dates, two are middle dates. Good luck reading the dates, you'll need it. Lot of 9 clunkers.



215. 1816 N-1 R4 VG10. Sharpness VF25 with a couple strong rim dents on each side, the strongest of these at OF. Otherwise the surfaces are smooth and attractive with only a few trivial nicks. Glossy chocolate brown. MDS with a fine die crack through the top of NITED. Ex Coins & Stamps (Detroit) 1/72-John D. Wright Collection.

1816 N-3 Ex. Jack Robinson-March Wells



216. 1816 N-3 R4 VF25. Glossy dark chocolate brown with lighter brown toning in protected areas. No roughness, only minor contact marks, including a light rim bruise at IC in AMERICA. The best identifying defect is a fine planchet lamination that arcs through stars 12 & 13, as struck. MDS. Ex Jack Robinson, Superior 1/29/89:655-March Wells.

The 2009 EAC Convention Sale, April 18, 2009



217. 1816 N-4 R2 VF30. Ten points sharper but covered with uniform extremely faint roughness under a frosty patina of dark steel and olive. No verdigris. The only notable mark is a small patch of very light corrosion under the I in AMERICA. M-LDS. Ex Collector Rare Coins 5/65-John D. Wright Collection.

Double Struck 1816 N-5



218. 1816 N-5 R3 G4+. Double Struck. Glossy chocolate brown with light chocolate toning covering the devices. The two-tone color scheme accents the details and adds to the eye appeal. No roughness or verdigris. The only notable mark is an old pinscratch in the upper right part of the wreath. This cent was double struck. The first impression was about 20% off center on the obverse while the reverse was being struck against another blank planchet. The second strike was normal, but strong evidence of the initial strike shows at the bottom of the obverse where BERTY from the headband is strong. The date is faint but remains easily readable. Removed from a PCGS slab graded G4 (the PCGS label is included, and the double struck feature is noted on the label).



219. 1816 N-7 R3 EF40. Glossy dark steel brown and chocolate with traces of lighter steel brown faded down from mint color in a few of the protected areas. Smooth and virtually free of marks except for a couple small ones on the bust tip. Nicely struck EDS. Ex Jonathan Kern 4/84-John D. Wright Collection.

220. 1816 N-8 R3 VF25. Ten points sharper with a half dozen hairline scratches in the field before the face and an "X" lightly scratched over the C in CENT. Otherwise smooth and very attractive. Frosty light to medium brown with chocolate toning on the highpoints. MDS. There is a single clear rim cud break from just below star 11 to star 12. Ex Dr. William H. Sheldon, Stack's 1938 auction-Floyd T. Starr, Stack's 12/4/84:1557-McCawley & Grellman Auctions 1/8/94:247-John D. Wright Collection.

1817 N-1 ExCatherine Bullowa



221. 1817 N-1 R4 VF25. Ten points sharper with extremely fine roughness in the fields, strongest at stars 2-3, and a few rim bruises, the strongest one at TE in UNITED. No verdigris. Rather glossy chocolate brown. Decent eye appeal in spite of the imperfect surfaces. MDS with fine die cracks from the bust tip and coronet tip. Ex Catherine Bullowa.

Bisected Reverse 1817 N-2 Ex. Blaisdell- Bland-Wright



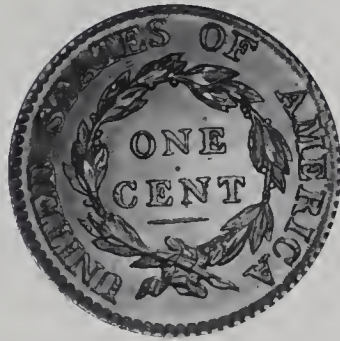
222. 1817 N-2 R3 EF45. Lustrous chocolate and medium brown with satiny mint frost covering the protected areas on both sides. No spots or stains. The only marks are a few faint hairline scratches on the face and in the field before the portrait. Otherwise this cent is choice. LDS with a clear die crack bisecting the reverse. Ex A. C. Gies:419-Willard C. Blaisdell 9/76-Del Bland 3/77-John D. Wright Collection.

The 2009 EAC Convention Sale, April 18, 2009

Terminal Die State 1817 N-4



223. 1817 N-4 R3+ G4. Terminal Die State. Slightly sharper but recolored glossy light olive brown and tan. No roughness, just a narrow scrape in the field behind the portrait. Rare terminal die state with a cud break connecting the bottom of the 18 to the rim below, and this cud extends well to the left of the date, nearly to star 1.



224. 1817 N-6 R1 EF45+. Lustrous light steel brown with darker steel brown and chocolate toning on the highpoints. Great luster and eye appeal. The only marks are a very light rim bruise at the D in UNITED and a tiny, light contact mark just right of that letter. Close to AU50. MDS. Ex Steve Vesely 11/86-John D. Wright Collection.



225. 1817 N-8 R2 AU50. Frosty olive and chocolate brown with traces of lighter reddish steel brown faded down from mint color in a few of the protected areas. Great luster and eye appeal. E-MDS with the faintest hint of die roughness in the field under star 5 but no hint of the "Mouse Break" on top of the head. Ex Johnnie Dillow 2/81-John D. Wright Collection.



226. 1817 N-8 R2 EF40+. Tiny "Finger Mouse." Slightly sharper with a stain of reddish chocolate toning around the date, and this stained area is covered with extremely faint roughness. The remainder of the planchet is choice. Lustrous chocolate and steel brown with satiny mint luster covering the protected areas. MDS with a tiny "Finger Mouse" extending up to the left from the top of the head below the left edge of star 8. The small patch of die roughness in the field under star 5 is faint but stronger than on the previous lot. Ex Bowers & Merena 11/12/84:47-Ferris Stamp & Coin 12/84-John D. Wright Collection.

227. 1817 N-8 R2 VF25. Full "Finger Mouse." Ten points sharper with a dull scratch arcing across the cheek and earlobe and traces of microscopic roughness on the reverse. Frosty dark chocolate brown and olive. The reverse is matte while the obverse is lustrous. No marks or verdigris. LDS with a full "Finger Mouse" break pointing up to the left from the top of the head. Ex Phil Wagner 2/80-John D. Wright Collection.

228. 1817 N-10 R1 VF30. Attractive glossy chocolate and olive brown with frosty flowline luster in protected areas on the reverse. No marks or other defects. Nicely struck EDS. Ex Rare Coin Exchange 8/70-John D. Wright Collection.



229. 1817 N-11 R1 NGC graded AU58. Frosty light steel brown and tan with darker chocolate toning on the highpoints. The only mark is a speck of dark toning at the dentils between stars 6 & 7. Sharply struck E-MDS. A nice cent. **Our grade is EF45+, close to AU50.**

The 2009 EAC Convention Sale, April 18, 2009



230. 1817 N-15 R4 VF25. Glossy light olive brown. Smooth and attractive for the grade. A diagonal nick just right of the top of the E in ONE is the only notable mark. E-MDS. Ex Kraso Coins (Chicago) 10/71-John D. Wright Collection.



231. 1817 N-16 R1 VF35+. 15-Star Obverse. Very attractive glossy chocolate brown with flowline luster covering the protected areas on both sides. Very close to EF40. The only defects are a few light contact marks, mostly in the field before the portrait. M-LDS with the reverse rotated 45 degrees CCW. A nice example of this popular variety.



232. 1817 N-16 R1 VF25. 15-Star Obverse. Sharpness EF45 with microscopic granularity covering most of the obverse and all of the reverse. No marks or verdigris. Dark olive and steel. The obverse is rather glossy while the reverse is closer to matte. MDS with the reverse rotated 15 degrees CCW. Ex Frank D. Mambro 12/69-John D. Wright Collection.

233. 1817 N-17 R4 VG8. A couple points sharper with a dull scratch from the throat to star 1 and a couple minor rim bruises on both sides. Otherwise the surfaces are smooth and offer excellent eye appeal for the grade. Glossy steel brown and chocolate. EDS+ with a fine die crack through the base of D-ST. The dies are misaligned, the obverse off a bit to K-11 and the reverse off a similar amount to K-4.

1817 N-17 Ex Johns- Ashby & Wright



234. 1817 N-17 R4 VF20. Sharper by at least 5 points but there is an "X" scratched in the field over the N in ONE. The "X" is obvious to the unaided eye, but this is the only mark on otherwise choice surfaces. Attractive glossy chocolate brown. MDS with a strong die crack through the top of TATE, and the right top of the first T is clearly raised toward the dentils above. Ex John Ashby 5/80-John D. Wright Collection.

235. Group of Seven 1817 Cents. Includes N-1 G4, N-1 AG3, N-12 M-LDS G4, N-17 EDS AG3, N-17 EDS Fair-2, N-17 MDS G4, and N-17 Rare Terminal Die State with a cud break connecting TATE to the rim above AG3. Some are slightly sharper with defects but all have a readable date. Lot of 7 coins. All are ex John Cloutier.

The 2009 EAC Convention Sale, April 18, 2009



239. 1818 N-2 R4 VG8. A couple points sharper with microscopic granularity covering the fields and protected areas. No verdigris, and the only mark is a rim nick over the second T in STATES. Slightly glossy dark olive brown and steel. M-LDS with a clearly raised retained cud break over NITED reaching nearly to the adjacent S. The date and legends are strong except for strike weakness at O and CE inside the wreath. Ex Sequoia Numismatics 7/84-John D. Wright Collection.

240. 1818 N-3 R3 VF25. Five points sharper with a few too many light nicks on the obverse for the higher grade. Glossy dark olive brown and chocolate. LDS with smooth, highly glossy surfaces, especially on the obverse. Ex Gino Sanfillipo 5/96-John D. Wright Collection.



236. 1818 N-1 R2 EF45. Five points sharper but lightly cleaned and nicely retoned frosty chocolate and steel brown with delicate overtones of light bluish steel. Traces of underlying very faded red show through in some of the protected areas. No spots or stains, only a few trivial contact marks. M-LDS with rim cud breaks at stars 2-4.5. Ex Joseph Lepczyk Sale #58, 7/27/84:98-John D. Wright Collection.

237. 1818 N-2 R4 G6. Dark olive brown and chocolate with lighter steel brown toning on the devices. No marks or verdigris, just a bit dull. E-MDS with a strong die crack through the top of TED nearly to the adjacent S with extensions to the dentils at either end. The date and legends are strong. Ex Jack Borekardt 4/81-John D. Wright Collection.

238. 1818 N-2 R4 VG10. Sharpness VF20 or slightly better but covered with very fine roughness that dulls the surfaces. No verdigris, but there is a scratch across the jawline. Dark steel and olive MDS+ with a slightly raised retained cud break over NIT, raised most above the N. Ex John D. Wright Collection.



241. 1818 N-4 R4+ F12. Sharpness VF20 with a half dozen vertical scratches in the field before the face up to star 6 plus dull horizontal scrapes across ONE and CENT. All these marks are old and blend perfectly into the attractive glossy chocolate brown toning, but they are an obvious distraction on an otherwise very attractive example of this tough variety. There are some additional lighter contact marks on both sides, none distracting. LDS with a strong die crack through star 3 reaching into the field near the lips. Obvious swelling shows in the field around the portrait. A decent example of this rare variety in spite of the obvious marks. Ex George Decker 2/70-John D. Wright Collection.

The 2009 EAC Convention Sale, April 18, 2009



242. 1818 N-7 R1 VF35. Sharpness EF45 or a bit better but there is a small but strong scrape on the rim at star 13 plus a dull vertical nick through that star. Otherwise this cent is quite attractive with only a few trivial marks. Glossy chocolate brown with subtle wisps of darker olive toning on both sides. Satiny mint frost covers the protected areas. Sharply struck EDS. Ex Willard C. Blaisdell, 1977 EAC Sale, lot 162-Johnnie Dillow 2/81-John D. Wright Collection.

243. 1818 N-7 R1 VF30. Very slightly sharper with a rim dent between stars 6 & 7; otherwise this cent is very nice, free of notable defects. Glossy chocolate brown with frosty lighter steel brown and tan in protected areas. Sharply struck MDS.



244. 1818 N-7 R1 EF45. Frosty light steel brown and tan with darker steel toning on the highpoints and on the lower left of the reverse. The only marks are a diagonal nick over the second 8 in the date, a tiny scratch under star 13, and a light rim bruise off the end of the wreath stem. LDS with a small cud break that connects the O in OF to the rim above. Ex Bob Cohen 5/77-John D. Wright Collection.

245. 1818 N-7 R1 VF25. Five points sharper but there are myriad fine hairline scratches inside the wreath. Otherwise smooth and attractive. Glossy chocolate brown with frosty flowline luster in protected areas. LDS with a small cud break connecting the O in OF to the rim above.

Wright Plate Coin 1818 N-8
Ex. Henry Hines-Willard Blaisdell



246. 1818 N-8 R3 EF40+. Wright Plate Coin. Frosty steel brown and light chocolate. Satiny mint luster shows in the protected areas. No spots or stains, only a few trivial contact marks, none notable. M-LDS with several small rim cud breaks on the obverse, the ones at stars 5, 7, & 8 extending slightly inside the dentils. This is the plate coin for the variety in John Wright's *The Cent Book*. Ex "V. S." 5/31 1917-98 "BYC"-Henry C. Hines 1947-Willard C. Blaisdell 9/76-Del Bland 3/77-John D. Wright Collection.



247. 1818 N-9 R3 VF35. Sharper by at least 5 points but there is a splash of dark olive toning at STA and another at the ribbon and stem at the bottom of the reverse, and these stains have been very lightly abraded. Otherwise there are no defects other than the usual quota of light contact marks consistent with the grade. Frosty chocolate brown mixed with reddish chocolate and darker olive on the reverse. MDS. Ex Common Cents & More 6/83-John D. Wright Collection.

248. 1818 N-10 R1 AU55. Glossy olive and dark chocolate brown. No spots or stains, only a hint of rub on the highest points of the design. MDS. Almost certainly from the Randall Hoard of mint state cents. Ex Bob Rooks 5/62-John D. Wright Collection.

249. 1818 N-10 R1 VF30. Five points sharper but recolored glossy dark steel brown and chocolate. Smooth, virtually flawless surfaces. A very light rim bruise off the stem tip is the only mark. LDS.

250. 1819 N-3 R3- EF40+. Attractive glossy dark chocolate and steel with traces of frosty lighter brown toning in a few of the protected areas. Satiny mint frost shows through in the fields and protected areas. A tiny nick under the E in ONE is the only notable mark. A nice example of this tough die variety.



251. 1819 N-3 R3- VF30. Sharpness EF45 but cleaned long ago, now frosty dark steel brown on the devices with faded red covering the protected areas. No spots or stains, just a few light contact marks around the bust tip. M-LDS. Ex J. C. Morgenthau 2/48:104-Stack's 9/8/78:593-John D. Wright Collection.



252. 1819 N-4 R3 VF30. Glossy chocolate brown with a couple splashes of darker olive brown at the bottom of the reverse. Satiny mint frost shows in some of the protected areas. Only trivial contact marks, strongest around ONE CENT. MDS. Ex John Ashby 6/79-John D. Wright Collection.



256. 1820/19 N-3 R2 VF20. Overdate Small 20 over 19. Ten points sharper with a patch of microscopic roughness at star 10 and a dull rim nick at star 1. Glossy medium brown and chocolate with darker reddish olive in the stain around star 10 and frosty flowline luster in the protected areas. E-MDS. The undertype 1 is clear behind the 2 while the undertype 9 is faint inside the 0. Ex Kirk Kelley 7/84-John D. Wright Collection.



253. 1819 N-6 R1 EF40. Attractive frosty light brown with darker steel and chocolate toning on the highpoints. Satiny mint luster peeks through in the protected areas, especially on the reverse. A very attractive cent for the grade. Nicely struck MDS. Ex 1985 EAC Sale, lot 377-John D. Wright Collection.



257. 1820 N-4 R4 VF25. Small Date. Glossy olive and chocolate brown. Smooth, attractive surfaces. A thin diagonal nick over the right top of the N in ONE is the best identifying mark, and it is trivial.



254. 1819 N-7 R4 VF30. Sharpness EF45 but there are two closely spaced dull rim nicks under the 19, a rim dent at star 12, and a couple additional light rim bruises at TAT and AM. A few other lighter marks can be found elsewhere on the obverse. Frosty chocolate brown with lighter brown toning covering the right side of the obverse. Mint luster covers much of the fields and protected areas, especially on the reverse where the eye appeal suggests a piece much closer to mint state. MDS. Ex Stack's OTC 6/68-John D. Wright Collection.



258. 1820 N-7 R3 NGC graded AU58. Small Date. Frosty dark chocolate and steel brown with lighter brown toning covering protected areas on the reverse. Traces of very faded mint remain on the reverse as well. A thin, barely visible nick at the dentils left of star 3 is the only mark. LDS with a clear die crack from the bust tip to star 1. **Our grade is EF45 choice.**

255. 1819 N-7 R4 VF20. Glossy olive brown with lighter brown in some of the protected areas on both sides. An attractive example for the grade, void of any notable defects. MDS.

The 2009 EAC Convention Sale, April 18, 2009

1820 N-8 Ex. Steve Vesely



1820 N-9 The Wright Plate Coin



259. 1820 N-8 R3 AU50. Small Date. Lustrous steel brown and chocolate with traces of original mint red remaining on both sides. Satiny mint frost covers the fields and protected areas. Only a few light contact marks, including a shallow incuse impression from the O in ONE on the cheek and a light diagonal pinscratch in the field between stars 12 & 13. MDS. Struck very slightly off center to K-3. Ex Steve Vesely 11/86-John D. Wright Collection.

260. 1820 N-9 R3 EF40. Large Date. Wright Plate Coin. Ten points sharper but recolored frosty very light olive and golden brown, the reverse a shade or two lighter than the obverse. No spots, stains, or marks, but this cent needs to tone down a few more shades to maximize its potential. MDS. This is the plate coin for the variety in John Wright's book on the middle date cents. Ex NOISE Show 6/83-John D. Wright Collection.

The 2009 EAC Convention Sale, April 18, 2009

261. 1820 N-10 R2 VF30. Large Date. Sharpness EF45 but very lightly whizzed and partially retoned lustrous bluish steel brown with very faded underlying red showing through on both sides. No spots, stains, or marks other than a few trivial rim nicks. LDS from heavily lapped dies showing the lowest curl detached. Ex Paul Padget 9/88-John D. Wright Collection.



262. 1820 N-11 R2 EF40. Large Date. Glossy medium brown and light chocolate. The only marks are a few minor nicks, including one low on the neck and another in the field over star 12, plus a couple more at the right end of the line under CENT. MDS. Ex Carl Windon-Del Bland 8/72-John D. Wright Collection.



263. 1820 N-12 R3 AU50. Large Date. Lustrous chocolate and steel brown with a few tiny wisps of darker olive brown toning on the obverse. Mint frost covers the protected areas and most of the fields. A shallow nick-like planchet chip on the chin and a small spot of dark olive brown toning left of the earlobe are the best identifying marks. M-LDS. Ex Dr. Bob Shalowitz 11/83-John D. Wright Collection.



264. 1820 N-14 R5- EF45. Large Date. Sharpness closer to mint state but lightly cleaned and retoned frosty dark chocolate and steel. No spots, stains, or contact marks. The usual die state with both dies heavily worn. Sharply struck with crisp hair details and full radial lines in all the stars. Called AU55 net VF35 and tied for CC#4 in the Noyes census, his photo #32553. Ex Gene Bickle 10/4/91-John D. Wright Collection.



265. 1820 N-15 R2 AU50. **Small Date.** Lustrous chocolate brown delicately mixed with lighter brown tones in protected areas. A small splash of darker olive brown toning at the E in UNITED is the only notable mark. MDS. Ex Chris McCawley 7/82-John D. Wright Collection.



266. 1821 N-1 R1 F15. Sharpness VF30 with far too many contact marks for the sharpness grade. These include a light rim bruise under the first 1 in the date and a collection of small, dull digs on the upper right quadrant of the reverse, strongest at NE in ONE. No corrosion. Glossy chocolate brown with frosty light brown remaining in the protected areas E-MDS.



267. 1822 N-1 R3 EF40. Frosty steel brown and light olive with lustrous golden light brown and tan faded down from mint color in protected areas. There is a hint of slightly darker toning at the face and in the recesses of the curl over star 13, plus a very light diagonal nick over the T in CENT. MDS. Ex Ferris Stamp & Coin 12/84-John D. Wright Collection.

268. 1822 N-2 R3 VF30. Ten points sharper with a few light contact marks, including a fine hairline scratch from star 3 to the lips and a few faint hairline scratches under CENT plus a dull horizontal nick over the right top of N in ONE. Attractive glossy chocolate brown with frosty flowline luster covering the protected areas. E-MDS. Softly struck on stars 7-10 but well impressed everywhere else. Ex Stack's (mail) 7/70-John D. Wright Collection

269. 1822 N-3 R2 AU50. **Clipped Planchet.** Glossy chocolate brown with lustrous lighter steel brown toning covering the protected areas. The reverse is a few shades lighter than the obverse and has some small splashes of darker steel brown toning on the right side. A trio of very tiny ticks just right of the date are the only notable signs of contact. Nicely struck E-MDS. The fields are smooth and slightly reflective. A curved planchet clip (as struck) affects the dentils under the 22 and half way to star 13 plus on the opposing dentils above OF. Ex Coin City Coins (Denver) 5/64-John D. Wright Collection.

The 2009 EAC Convention Sale, April 18, 2009



270. 1822 N-5 R3 EF45. Glossy chocolate and steel with frosty mint luster showing through in the protected areas. No spots or stains, only a few microscopic contact marks, including a few around star 9 and some more at the right end of the line below CENT. MDS with the usual fine die rust showing on the portrait. Ex Jim McGuigan 4/81-John D. Wright Collection.

271. 1822 N-6 R3 VF35. Ten points sharper but recolored glossy very light olive and steel. The only marks are a small splash of reddish chocolate brown toning at the wreath under NT in CENT and a tiny spot of lighter tan toning at the left foot of the first A in AMERICA. MDS. Ex Dr. Bob Shalowitz 11/92-John D. Wright Collection.

272. 1822 N-7 R3+ VF20. Sharpness near VF30 with traces of extremely faint roughness on the right half of the reverse plus a small rim bruise over the second S in STATES and a shallow planchet chip over the right side of the O in ONE, as struck. Recolored glossy chocolate and steel with slightly lighter steel brown toning on the right half of the reverse. MDS. Ex G. Harris-Howard W. Whitaker 5/82-John D. Wright Collection.



273. 1822 N-8 R4 VF25. Sharpness EF40 with traces of extremely fine roughness on both sides and a rim dent at F-A. Recolored glossy dark olive and steel. Sharply struck M-LDS with a clear die crack from the dentils down through the left edge of the F in OF to the ribbon loop where it fades out. Ex Kagin's 10/22/76:798-William A. Weimer 7/77-John D. Wright Collection.

274. 1822 N-8 R4 F15. Sharpness near VF20 with a few too many light nicks for a higher grade, including two thin ones on the neck under the earlobe. Attractive glossy chocolate brown. MDS. Ex Robert Dunfield.

275. 1822 N-9 R5- VG8. Sharpness F12 with a few rim bruises on both sides, the strongest of these at star 9, plus some minor nicks on the portrait. Recolored glossy light olive and steel brown with faded red remaining in protected areas on the obverse. EDS. Ex Gino Sanfillippo 4/95-John D. Wright Collection.

276. 1822 N-9 R5- VG8. Sharpness F15 with microscopic roughness covering the planchet, strongest in the fields. No verdigris, just a few dull but obvious contact marks at star 1 and on the neck. Dark olive and steel with lighter steel brown toning covering the highpoints. EDS.



277. 1822 N-11 R2 VF35. Attractive glossy chocolate and steel with lighter brown in protected areas on the reverse. No notable defects. Sharply struck EDS. Ex John D. Wright Collection.



278. 1822 N-11 R2 EF40. Five points sharper with a small planchet chip in the field above the head, as struck, plus a small splash of reddish olive at UN. Otherwise this cent is very attractive. Frosty light to medium brown with darker steel brown toning on the highpoints and lustrous tan faded down from mint color in protected areas. MDS. Ex Dr. Bob Shalowitz 11/84-John D. Wright Collection.

279. 1822 N-12 R4 VF20. Sharpness VF35 or a bit better but the radial lines in many of the stars have been skillfully strengthened and both sides were burnished. Recolored a very attractive and quite natural-looking glossy chocolate brown. The surfaces are smooth and the fields are reflective. Great (naked) eye appeal. MDS. Ex C. Douglas Smith-Darwin B. Palmer 4/73-John D. Wright Collection.

The 2009 EAC Convention Sale, April 18, 2009



280. 1822 N-13 R5 VG10. Sharpness VF20 or slightly better but covered with microscopic granularity on all but the highpoints of the design, which are smooth. No verdigris, and the only mark is a small rim nick at the E in AMERICA. Dark olive and steel. Sharply struck EDS. Ex Myles Gerson-R. S. Brown, Jr., Superior 9/30/86:570-J. R. Frankenfield, McCawley & Grellman Auctions/Superior 2/17/01:787-Colonel Steven Ellsworth Collection.



281. 1822 N-13 R5 VG8+. Slightly sharper with traces of extremely faint roughness, mostly in the field before the face, plus some tiny contact marks scattered over both sides, none notable. Rather glossy light to medium olive brown. MDS. Ex Ferris Stamp & Com 1/86-John D. Wright Collection.

282. 1823 N-2 R2 VG7. Glossy steel brown with olive toning in protected areas. No roughness or verdigris, only light contact marks consistent with the grade, none notable. E-MDS. The date is bold and the legends are strong.



283. 1823 Restrike AU58. Glossy chocolate brown with darker olive and chocolate toning in protected areas. Just a hint of friction on the highest points of the design from new. EDS, before any die cracks. In addition, the cud break at stars 4-7 was carefully smoothed away and the dentils in that area were reengraved to make this cent appear more like the 1823 original it was intended to replace. One of the more highly coveted early strikes from a pair of rusted dies obtained from the US Mint scrap heap. Ex J. P. Young, Barney Bluestone 4/27/45:361-Floyd T. Starr, Stack's 12/4/84:1630-John D. Wright Collection.

The 2009 EAC Convention Sale, April 18, 2009



284. 1824/2 N-1 R1 F15. Overdate 4 over 2. Glossy dark olive brown with lighter chocolate toning covering the highpoints. No roughness, and the only mark is a thin, very light diagonal nick touching the bottom edge of the nostril. MDS. The overdate feature is obvious.



286. 1825 N-1 R4 VF25. Ten points sharper with some tiny nicks in the field before the portrait and minor roughness around RICA. The obverse is a very attractive glossy chocolate brown while the reverse is a mix of chocolate tones and darker bluish olive brown. Frosty flowline luster shows in protected areas on both sides. MDS. The die crack through the base of the date is clear. Ex Jim Frans 1/77-John D. Wright Collection.



285. 1824 N-2 R2 AU55. Attractive frosty chocolate brown delicately mottled with some lighter brown tones on the reverse. Slightly darker toning on the N's in ONE CENT are the best identifying marks on this cent. Satiny mint luster covers most of the planchet, especially on the obverse where the eye appeal is outstanding. MDS. Removed from a PCGS slab graded MS62BN (PCGS label included).



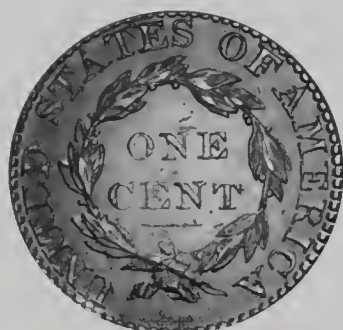
287. 1825 N-6 R3 EF45. Frosty chocolate brown very delicately mottled with slightly lighter and darker shades of chocolate and olive brown. The fields are covered with satiny mint luster. No spots or stains, only light contact marks. A vertical nick over the N in CENT is the best identifying defect. LDS. Ex Jim McGuigan 4/81-John D. Wright Collection.



288. 1825 N-7 R3 VF20. Rather glossy dark olive with chocolate toning on the devices. The surfaces are decent but not perfectly smooth. A light rim bruise at star 9 and a curved scratch at CE in CENT are the only notable marks. EDS.



289. 1825 N-8 R3 VF25. Sharpness EF40 with traces of microscopic roughness on both sides. There are light contact marks covering the cheek, and these marks have been lightly smoothed to minimize their impact. Other small contact marks are scattered over both sides, including a small dig in the field close under the chin. Somewhat frosty light olive and steel mixed with reddish chocolate toning. M-LDS. Ex Gordon J. Wrubel 5/78-John D. Wright Collection.



290. 1825 N-10 R3 VF30. Ten points sharper but there are two small digs on the bust, another between stars 4 & 5, a fine horizontal hairline scratch under the bust tip, and a rim dent at the U in UNITED. Otherwise this cent is quite sharp and attractive. Frosty light chocolate and bluish steel brown with traces of lighter reddish brown faded down from mint color in a few protected places on the reverse. E-MDS, before any rim cud breaks on the obverse. Ex Stack's OTC 7/68-John D. Wright Collection.



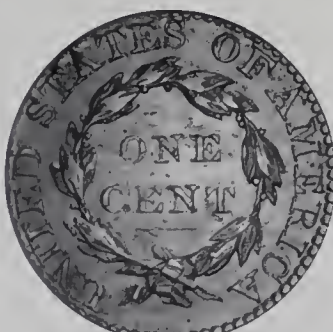
293. 1826 N-1 R2 EF45. Five points sharper with some small, shallow contact marks on the cheek and jaw and another midway between the throat and star 1. Glossy chocolate and steel with lighter shades of brown in protected areas. Sharply struck EDS with hard, slightly reflective fields.



291. 1825 N-10 R3 VF20. Glossy light olive and steel brown. Smooth and attractive for the grade, free of any notable defects. MDS with clearly defined rim cud breaks from star 8 nearly to star 9 and another from right of star 9 down nearly to star 10. Ex John Ashby 10/81-John D. Wright Collection.



294. 1826 N-3 R3 EF40. Frosty chocolate and steel brown with lustrous lighter steel brown in protected areas. No spots or stains, only some light contact marks. The notable ones are a collection of tiny nicks on the neck, a pair of light pinpricks between stars 1 & 2, and a pair of dull nicks at the first S in STATES. EDS. Ex Lester Merkin 6/74:612-John D. Wright Collection.



292. 1825 N-10 R3 VF25. Close to VF30 but there are too many tiny contact marks for the higher grade, including a couple fine hairline scratches in the field above the head and a couple shallow nicks on the lower part of the neck. Frosty light olive and chocolate brown with a couple small splashes of reddish chocolate toning on the reverse. LDS with a cud break that joins star 7 to the rim above. Ex Jack Borckardt 2/79-John D. Wright Collection.



295. 1827 N-2 R3 VF30. At least 5 points sharper with extremely faint roughness covering the reverse fields. No marks or verdigris. The obverse is choice glossy light chocolate brown while the reverse is a less attractive frosty reddish chocolate with light chocolate brown toning on the devices. MDS. Ex Allen's Coins (Columbus, Ohio) 10/79-John D. Wright Collection.

The 2009 EAC Convention Sale, April 18, 2009

1827 N-7 The Wright Coin



296. 1827 N-4 R2 VF30. Rather glossy olive and steel with a couple tiny splashes of reddish chocolate toning at RIC. No marks or verdigris, but the reverse is a bit dull. Nicely struck EDS. Ex Del Bland 5/71-John D. Wright Collection.



297. 1827 N-5 R2 NGC graded MS63 Brown. Attractive frosty medium brown with a spot of darker reddish chocolate carbon between stars 10 & 11. Satiny mint luster covers the fields and protected areas. Just a hint of friction on the highest points from mint state. MDS. **Our grade is AU55.**

298. 1827 N-7 R3 EF40. Wright Plate Coin. Five points sharper with a few faint diagonal contact marks on the jaw. Otherwise this cent is virtually flawless and offers outstanding eye appeal for the grade. Choice lustrous chocolate with lighter steel brown toning in protected areas. Traces of very faded mint color remain on the reverse. This is the plate coin for the variety in the Wright book on middle date cents. LDS Ex Stack's OTC 7/68-John D. Wright Collection.



299. 1827 N-8 R3 EF40. Five points sharper but there is a stain of dark steel toning on the lower half of the reverse with a smaller stain of similar toning at the dentils left of star 4. The rest of the planchet is a very attractive frosty medium brown and light chocolate. MDS.

301. 1827 N-10 R4+ F15. Sharpness VF35 but covered with uniform fine granularity. No verdigris, but there are several old, dull vertical scratches hidden in the patina before the portrait and a pair of dull nicks on the lower part of the neck. Partly glossy dark olive and chocolate. MDS. Ex NASC Auction #13, 2/68:121-John D. Wright Collection.



300. 1827 N-8 R3 VF25. Glossy chocolate and light olive steel. No spots or roughness, only a few microscopic marks from flawless for the grade. MDS. Ex Liberty Coin Shop 8/73-John D. Wright Collection.

302. 1827 N-10 R4+ AG3+. Close to G4, but there are several small marks around the rims on both sides. Otherwise the surfaces are smooth and attractive for the grade. Glossy light chocolate brown. Ex Robert Dunfield.



304. 1827 N-12 R5 VG8+. Slightly sharper with a pair of light parallel scratches from the jawline down to the 2 in the date. No roughness or verdigris. Mostly glossy chocolate brown with slightly lighter chocolate brown and steel toning on the devices. MDS. The die crack down the neck passing between the 1 & 8 to the rim is clear. Ex Denis Loring 5/71-John D. Wright Collection. (John's envelope contains his note that he traded Denis Loring a unique 1797 NC-3 with reverse cud break at TES for this 27N12. This was John's first example of the N12 variety. The Breen book indicates the 1797 NC-3 with cud at TES is still unique as a die state. Obviously the rarity of that piece held up nicely as the population of 27N12 has grown over the decades.)



305. 1827 N-12 R5 G6. Very slightly sharper with about a dozen dull pinpricks on the obverse, mostly at the date and down the front edge of the portrait. Rather glossy olive and steel brown. The date and legends are complete and strong. EDS, before the usually seen die crack passing between the 1 & 8 of the date. Ex Colonel Steven Ellsworth and Jim Long 5/96-John D. Wright Collection. (John was given this cent as a gratuity for his attributing the "Butternut Hoard" of several thousand large cents. This was the first example of the variety ever found unattributed by John Wright following over 35 years of diligent searching.)



306. 1828 N-4 R4 VF20. Sharpness VF35 but there is a trail of shallow digs across the reverse from F-A down to near the U in UNITED plus a short arcing scratch at ME. Otherwise the surfaces and eye appeal of this cent are excellent. Glossy chocolate brown with frosty lighter brown toning covering the protected areas. MDS. Too bad about the intentional marks because this would have been a great example of the variety. Ex Paul Padgett 11/83-John D. Wright Collection.

303. 1827 N-12 R5 F15. Sharpness VF35 or slightly better but covered with very fine granularity, strongest on the obverse. Microscopic specks of reddish verdigris can be found in protected areas on the reverse, but there are no marks or other distractions. Dark steel and olive. Sharply struck MDS. The die crack from the earlobe down to the dentils under the right edge of the 1 is clear.



307. 1828 N-5 R2 VG8+. Terminal Die State. Glossy medium brown with darker chocolate brown toning in protected areas. There are a half dozen small splashes of dark chocolate toning on the reverse and some tiny nicks scattered over the obverse, none notable. Rare terminal die state with a strong cud break connecting TED to the rim above. Much more attractive than the sharper example that follows. Ex Tom Reynolds 7/81-John D. Wright Collection.

308. 1828 N-5 R2 VG10. Terminal Die State. Sharpness VF35 but lightly corroded and there is a dull, deep gash through the L in LIBERTY plus a couple light scrapes on the lower part of the portrait. Dull chocolate and olive brown. Rare terminal die state with a strong cud connecting TED to the rim above. An unattractive cent but one of the sharpest known of the terminal die state.



309. 1828 N-6 R1 EF40. Five points sharper but there are a few too many tiny nicks on the obverse for the higher grade. None of these marks is at all distracting, and the reverse is nearly flawless. Frosty light to medium brown with mint luster showing in protected areas. M-LDS with a fine die crack from the bust tip to star 1. Ex Stack's 1/02:782.



310. 1828 N-7 R3 EF45. Wright Plate Coin. Attractive frosty steel and chocolate brown with lustrous lighter steel brown toning in protected areas. The only mark is a tiny diagonal hairline scratch in the field just right of star 2. MDS. This is the plate coin for the variety in the Wright book on middle date cents. Ex Anderson Dupont, Stack's 9/24/54:670-Willard C. Blaisdell 9/76 (via Del Bland)-R. E. Naftzger, Jr., 1977 EAC Sale, lot 212-John D. Wright Collection.

The 2009 EAC Convention Sale, April 18, 2009



311. 1828 N-8 R3 VF35. Five points sharper with some tiny nicks on the face and in the field before the portrait. None of these marks is significant but there are more than you expect for the higher grade. Nice glossy chocolate brown with lighter brown toning covering the fields and protected areas. EDS. Ex Marv Evans 11/83-John D. Wright Collection.



312. 1828 N-9 R4 EF40. Five points sharper with a tiny pinprick in the field over the right edge of star 3, a small rim bruise at the D in UNITED, and a dull rim nick at the M in AMERICA. Attractive glossy chocolate brown with delicate splashes of reddish chocolate on both sides. Satiny mint luster shows through in the protected areas, especially on the reverse where there are a couple hints of faded mint color. Nicely struck E-MDS. Ex John Ashby 6/81-John D. Wright Collection.

313. 1829 N-3 R3 F15. Small Letters Reverse. Glossy light olive and chocolate brown. No roughness or verdigris, and the only notable sign of contact is a dull scrape on the rim at F-A. A stray planchet cutter impression shows at the outer tips of stars 2-6 and on the reverse over UNITED STA, as struck. LDS.



314. 1829 N-4 R4 VF25. Wright Plate Coin. Sharper by at least 5 points but there is a shallow planchet flake on the cheek right of the nostril, as struck. Otherwise there are only a very few microscopic contact marks on smooth, lustrous surfaces that suggest a much higher grade. The grade assigned is more a function of the typical imperfect strike that shows weakness on the stars, top of the hair bun, and on the wreath than on any wear or marks. Glossy chocolate brown with lighter brown in protected areas and faint hints of very faded mint color around the portrait. LDS. The die crack through the R in AMERICA is clear and a rim cud break extends from star 3 to star 5 with a thin extension up to star 6. This is the plate coin for the variety in the Wright book. Ex Chet Turkleia 11/72-John D. Wright.

The 2009 EAC Convention Sale, April 18, 2009

315. 1829 N-4 R4 VG10. Sharpness VF20 but covered with very light corrosion. No marks or notable traces of verdigris. Slightly glossy dark olive brown with lighter chocolate highpoints. LDS. The rim cuds at stars 3-5 are clearly defined and the crack through the R in AMERICA is strong.

Wright Plate Coin 1829 N-6



316. 1829 N-5 R3 VF30. Small Letters Reverse. Ten points sharper where properly struck up, but the stars and upper part of the portrait are weakly impressed, as usual making this variety difficult to grade. The only marks are a couple tiny ticks in the field before the eye and another under TE in STATES. The obverse is glossy chocolate brown with a swipe of medium brown toning from star 2 across to star 10 and below. The reverse is glossy light chocolate with ample frosty lighter brown toning in protected areas. LDS with rim cud breaks at stars 3-4, star 11, and over TE in STATES.



317. 1829 N-5 R3 VF25. Small Letters Reverse. Five points sharper but expertly recolored glossy chocolate and olive brown with frosty lighter brown toning in protected areas on the obverse. No notable defects, only a few trivial marks on the portrait and light dirt in some of the protected areas. A tiny speck of silvery toning (from a planchet impurity) is located on the lower part of the neck. Nicely struck (which is unusual for the variety). E-MDS. The only rim cud on this piece is a tiny one just below star 3. Ex Rod Burrell 10/92.

318. 1829 N-6 R1 AU50. Wright Plate Coin. Choice lustrous medium brown with slightly darker steel brown toning on the highpoints. Great luster and eye appeal. The only marks are a tiny nick in the field before the upper lip, a light diagonal hairline scratch under star 8, another left of star 13, and a few trivial ticks at the bust tip. Sharply struck MDS. This is the plate coin for the variety in *The Cent Book*. Ex Ray Chatham-John Ashby 10/80-John D. Wright Collection.



319. 1829 N-7 R3 EF40. Frosty olive and chocolate brown. The only marks are a few very faint hairlines in the natural toning. LDS with all 5 of the "Wheelspoke" die cracks on the reverse clear plus several additional cracks meandering inside the wreath. A well struck example of the variety, only a half dozen of the stars weakly impressed. Ex Iron City Coins (Dallas) 6/87-John D. Wright Collection.



321. 1830 N-1 R1 AU50. Frosty dark chocolate brown with traces of very faded mint color in a few of the protected areas on the reverse. No spots or stains, only a few trivial contact marks, none notable. Excellent eye appeal. MDS with a very fine die crack through star 2. Ex Ron Guth 7/82-John D. Wright Collection.



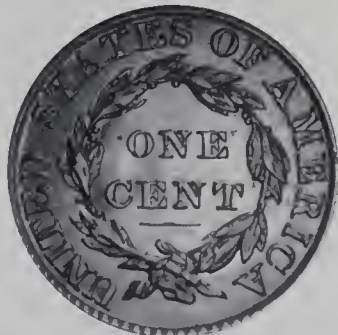
322. 1830 N-1 R1 VF20. Glossy chocolate and light olive brown. A light diagonal nick right of the base of the E in ONE is the only notable mark. MDS with a die crack through star 2. Ex John D. Wright date set.



323. 1830 N-3 R3 VF35. Slightly sharper but lightly cleaned and retoned glossy olive and chocolate brown. Frosty flowline luster covers the fields and protected areas on the reverse. Only minor contact marks, none notable. MDS.



324. 1830 N-6 R4 F12. Small Letters Reverse. Choice glossy light chocolate brown with slightly lighter brown toning in protected areas on the obverse. Smooth and very attractive for the grade, free of any notable defects. MDS.



320. 1829 N-8 R1 EF40. Glossy dark chocolate brown with some lustrous lighter steel brown toning in protected areas. Great surfaces and eye appeal. A dull nick on the tip of the chin and a couple more on the neck, otherwise choice. LDS with thin but clear rim cud breaks at stars 8 & 9. Ex Jim McGuigan 3/73-John D. Wright Collection.

The 2009 EAC Convention Sale, April 18, 2009

Rare 1830 N-9



325. 1830 N-9 R6- G6. Sharpness VF30 or slightly better but covered with light to moderate corrosion mixed with shallow greenish verdigris. There is a dull dent on the second A in AMERICA that causes a bulge at star 9 and a pinch on the rim at star 11 and the opposing rim at ERI. Dark olive brown and steel. The date is strong and the legends are bold. Great detail but not great eye appeal. But it's one of the sharpest known examples of the variety, one of the rarest known to Newcomb. Even the recently auctioned Naftzger example had obvious defects. Waiting for a choice one might be a frustrating quest.



326. 1830 N-10 R4+ VG10. Slightly sharper with faint roughness in the fields. No verdigris, and the only contact marks are a very light rim bruise under the date and a couple more on the reverse. The surfaces were lightly smoothed, then expertly retoned glossy chocolate and steel brown. LDS (but not quite the latest) with a raised retained cud break connecting ATES to the rim above. Ex Omega Stamp & Coin (Brooklyn) 5/68-John D. Wright Collection. (John found this coin while in NY visiting Dr. Lapp around the time EAC was formed by John, Dr. Lapp, and other visionaries who loved our early coppers.)



327. 1830 N-11 R5 VG8. Sharpness VF25 but covered with uniform fine granularity that dulls the surfaces. No verdigris or marks. Light olive with darker olive toning in protected areas. Called VF20 net VG7 in the Noyes census, his photo #32156.

328. 1831 N-2 R2 VF35. Small Letters Reverse. Glossy shades of chocolate brown mixed with lighter brown and reddish chocolate tones on the reverse. A pair of small nicks right of star 4 and another close under the bust are the only notable marks. EDS. Ex John D. Wright Collection.

329. 1831 N-2 R2 VF35. Small Letters Reverse. Frosty chocolate brown delicately woodgrained with slightly darker olive, reddish chocolate, and lighter steel brown tones. The only mark is a barely visible diagonal hairline scratch over the N in ONE. LDS with a rim cud that nearly reaches the outer point of star 11. Ex John D. Wright Collection.

330. 1831 N-2 R2 VF20. Small Letters Reverse. Double Profile. Five points sharper with a half dozen tiny rim nicks on the obverse and a single nick on the eyebrow. Otherwise the surfaces are smooth and offer excellent eye appeal for the grade. Glossy medium brown and light chocolate. LDS with a small cud break at star 11 nearly reaching the outer point of that star. A double profile from the forehead down to the chin.



331. 1831 N-5 R4 VF25. Small Letters Reverse. Glossy reddish brown and light chocolate with frosty flowline luster in protected areas on the reverse. A couple small spots of dark olive toning on the upright of the E in CENT are good identifying marks. MDS. A nice example of this tough variety, in the lower half of the expanded condition census. Ex McCawley & Grellman Auctions/Superior 9/5/04:879-Tom Reynolds.



332. 1831 N-5 R4 VF20. Small Letters Reverse. Ten points sharper but there are a few contact marks, including a dull diagonal scratch from the earlobe to the bust tip, a shallow scrape at CE in CENT, a small dig between the C & E, and a tiny rim bruise over AT in STATES. Attractive glossy medium brown with chocolate toning on the highpoints. The obverse fields are hard and slightly reflective while the reverse has flowline luster covering the protected areas. EDS. Ex Carl Windon-Del Bland 8/72-John D. Wright Collection.

The 2009 EAC Convention Sale, April 18, 2009



333. 1831 N-7 R1 EF45+. Large Letters Reverse. Lustrous chocolate brown with subtle puffs of darker olive and steel toning on the reverse. The fields are covered with satiny mint frost, especially on the reverse. The only mark is a thin diagonal nick on the cheek. MDS with a fine double profile on the lips, chin, and neck (from die bounce). Ex Russell Wyatt, Superior 9/30/85:554-Jack Robinson, Superior 1/29/89:938-John D. Wright Collection.

334. 1831 N-8 R3 VF30. Large Letters Reverse. Ten points sharper but the fields are covered with extremely faint roughness that's hidden under a glossy reddish chocolate brown patina. The color most likely is not original. No marks, just traces of crud in protected places on the reverse. E-MDS with a fine die crack passing through the top of TED-ST. Ex R. S. Brown, Jr., Superior 1/27/96:575-John D. Wright Collection.

Rare Terminal Die State 1831 N-8



335. 1831 N-8 R3 G5+. Large Letters Reverse. Terminal Die State. Lightly cleaned, now toned glossy light olive and bluish steel brown blending to chocolate. The only mark is a shallow dent on star 11. Rare terminal die state with a strong cud break that connects TED-S to the rim. Ex Kalamazoo (MI) Coin Show 11/84-John D. Wright Collection.



336. 1831 N-10 R3 EF45. Large Letters Reverse. Five points sharper with a stain of dark olive and steel toning at stars 3-6 with a bit more of the dark toning on the cheek. Otherwise the color is a very attractive lustrous medium brown. The surfaces are covered with satiny mint frost and the only signs of contact are a couple trivial ticks in the field off the chin. Sharply struck EDS. The obverse fields are hard and slightly reflective while the reverse shows fine radial die flowlines. Ex Joseph Lepczyk, MSNS auction, 11/25/78:450-John D. Wright Collection.



337. 1831 N-11 R2 EF45. Small Letters Reverse. Slightly sharper but lightly cleaned and retoned frosty dark bluish steel and olive brown. Traces of very faded red remain in some of the protected areas. A few light contact marks on the face and neck, otherwise void of defects. EDS but not quite the earliest as there are microscopic die flowlines starting to show near the dentils on the obverse. Ex Dr. Bob Shalowitz 3/84-John D. Wright Collection.

338. 1831 N-12/1 R1 VF20. Large Letters Reverse. Glossy chocolate and steel. Smooth surfaces with only a few minor contact marks consistent with the grade, including a rim nick at the first A in AMERICA. M-LDS with a cud break that connects two points of star 13 to the rim below. Ex Norm Pullen 4/81-John D. Wright Collection.

339. 1831 N-12/1 R1 VG7. Large Letters Reverse. Recolored glossy dark olive and steel. Smooth, free of any notable marks. M-LDS. A cud break involves two points of star 13.



340. 1831 N-14 R4 VF30+. Large Letters Reverse. Glossy chocolate and medium brown with wisps of darker olive brown toning on the reverse. Luster from fine die flowlines covers the protected areas around the stars. No notable defects, close to VF35. MDS with a thin rim cud break at star 9. Ex Frank D. Mambro 12/69-John D. Wright Collection.



341. 1833 N-2 R2 AU50. Choice lustrous medium brown with chocolate toning on the highpoints. The only mark on this choice cent is a spot of darker toning in the dentils over the second T in STATES, and in this spot is a tiny rim nick. Otherwise this cent is choice. MDS.

342. 1833 N-6 R1 EF45. Very slightly sharper but covered with a very thin coat of lacquer. Glossy light olive and steel brown with light bluish steel overtones on the reverse and underlying luster in the fields and protected areas. No notable defects. M-LDS. The reverse is rotated 35 degrees CW.

343. 1834 N-5 R5 G6. Large 8 & Stars, Medium Letters. Sharpness at least VG10 but dull because of extremely fine granularity. No marks, only traces of greenish verdigris dusted into protected areas on the reverse. Date and legends are clear.

344. 1834 N-5 R5 G4. Large 8 & Stars, Medium Letters. A couple points sharper with splashes of dark carbon on otherwise glossy brown and chocolate surfaces. Some light contact marks of no consequence. The date and legends are complete and easily readable. Blotchy toning might benefit from some TLC.

345. 1835 N-1 R1 VG10. Large 8. Large Planchet Delamination. Slightly sharper with a half dozen small digs or punchmarks on the right side of the obverse, strongest at star 13. Recolored a rather glossy mix of chocolate and steel with coppery tan in the mix. A large planchet delamination covers the upper right third of the reverse. Tiny planchet clip at star 8.



346. 1835 N-2 R3 EF40. Head of 1834. Ten points sharper with at least a half dozen small rim nicks scattered around both sides, a thin diagonal nick in the field left of star 11, and a pair of shallow nicks or planchet chips close over the C in CENT. Otherwise the surfaces and eye appeal of this cent are excellent. Frosty chocolate blending from light to dark shades. Satiny mint luster covers the fields and protected areas on both sides. MDS. Ex Ray Chatham 12/79-John D. Wright Collection.

The 2009 EAC Convention Sale, April 18, 2009

Inspirational 1835 N-4

1835 N-9 Ex. Chuck Furjanic



347. 1835 N-4 R4+ F15. Head of 1834. Slightly sharper with a rim bruise at F-A. Otherwise this cent is quite attractive, free of any spots, stains, or notable contact marks. Glossy medium brown and light chocolate. MDS. Ex Collector's Shop (Boston) 8/67-John D. Wright Collection. (John's envelope includes his comment, "They don't come much better than this—I danced all the way home. And it took nine more years of diligent search to find an equal to this one.") I've known John for 30 years, and dancing is not one of the skills I associate with this gentle giant.

348. 1835 N-9 R4 VF25. Head of 1834 with Large 8. Rotated Reverse. Sharpness EF40 but covered with uniform very fine roughness. No marks or verdigris. Retoned frosty dark steel and olive with hints of reddish chocolate on both sides. Sharply struck EDS. The reverse is uncracked and rotated 40 degrees CW from a normal head-to-foot orientation. Ex Chuck Furjanic 8/77-John D. Wright Collection.

The 2009 EAC Convention Sale, April 18, 2009



349. 1835 N-10 R4+ VF20. Head of 1834. Five points sharper with a few too many light contact marks for the higher grade, including a half dozen very faint vertical hairline scratches in the field before the portrait, a couple dull nicks on IB in LIBERTY, and a thin nick in the hair above the adjacent E. Glossy medium brown and light chocolate with subtle speckles of darker olive brown toning on both sides. E-MDS. Ex Steve Fischer 6/84-John D. Wright Collection.



350. 1835 N-11 R4+ F12. Head of 1834. Sharpness VF25 but burnished (although there is no hint of roughness on either side) and retoned glossy dark chocolate brown with medium brown toning on the devices. There are a few small nicks at stars 8-11 and several light scratches around ONE CENT. MDS. The V-shaped die crack at the bottom of the reverse is clear but the cud break has not started to form. Ex Stack's 12/63:649-John D. Wright Collection.



351. 1835 N-11 R4+ G5. Head of 1834. Terminal Die State. Very slightly sharper with extremely faint roughness covering the fields and protected areas on both sides. No marks or verdigris. Slightly glossy steel brown and chocolate. The date and legends are complete and clear. LDS with a strong cud break at the bottom of the reverse that connects the top of the U to the rim. Ex Jack Borekardt 10/73-John D. Wright Collection.

352. 1835 N-12 R4 F15. Head of 1834. Five points sharper with shallow roughness inside the wreath. The only notable contact marks are a small rim bruise just right of the date and above the O in OF. Rather glossy mix of brown, chocolate. MDS. Ex Wimp's (Fort Wayne, IN) 6/74-John D. Wright.



353. 1835 N-13 R4 VF20. Head of 1834. Five points sharper but there is a very dull dent or depression on the jaw. Otherwise the surfaces are quite nice and show only trivial ticks in the field before the portrait. Glossy light chocolate brown with darker chocolate and steel on the devices. LDS with rim cud breaks at D-S and ST. Ex John Groot 11/76-John D. Wright Collection.



354. 1835 N-14 R2 AU50. Head of 1836. Choice lustrous chocolate brown, the obverse with a subtle hint of woodgrained lighter and darker shades of chocolate. Nicely struck EDS. The fields are hard and very slightly reflective, and the faint bulge in the field near the dentils at stars 9-11 is clear.



355. 1835 N-18 R4+ VF20. Head of 1834. Glossy medium brown and light chocolate with specks of darker chocolate brown in protected areas on the reverse. Smooth surfaces with only a few contact marks, including a small dig under the left foot of the M in AMERICA and a light rim bruise at CA. EDS with the reverse rotated 30 degrees CW. Ex Jim Frans 3/73-John D. Wright Collection.

356. 1835 N-19 R5 EF45+. Head of 1836. Glossy light olive brown and chocolate with frosty lighter steel brown in protected areas on both sides. Flowline luster covers the fields and protected areas on the obverse while the reverse fields are hard and slightly reflective thanks to the new die on that side. The only marks are a fine scratch in the field down from the left point of star 11 and a barely visible rim bruise at the top of star 12. EDS, as always on this rare variety. Close to AU50. Removed from an NGC slab graded MS61BN (NGC label included, and it shows the attribution and Rasmussen provenance). Called AU55 net EF45 and CC#2 in the Noyes census, his photo #25746. Ex Bob Grellman 6/15/82 Dick Punched 6/15/89-Wes Rasmussen, Heritage 1/13/05 3659



357. 1836 N-1 R1+ AU55. Lustrous olive and steel. The fields are satiny and free of any notable defects. Just a touch of rub on the highest points from mint state. LDS. All the fine die cracks described in the Wright book are present. Ex Paul Saros 6/82-John D. Wright Collection.



358. 1836 N-3 R1 EF45. Glossy light to medium brown with slightly darker chocolate toning on the highpoints. Frosty mint luster shows through in the protected areas on both sides. A small spot of reddish chocolate toning in the field under star 3, a speck of verdigris nestled between the two upper left points of star 11, and a tiny arc of dark olive brown toning in the dentils over the A in STATES are the only marks. M-LDS with a cud break hanging down inside the dentils at star 6 and a fine die crack arcing across the upper half of the reverse.

Rare Early Die State 1836 N-6



359. 1836 N-6 R7- (as a die state) F12. Gobrecht Head. Slightly sharper with a few too many tiny contact marks for the higher grade, including a trio of small impressed dentils in the field off the chin and a very light rim bruise at the M in AMERICA. Slightly glossy light chocolate brown. Rare EDS, before the cud break that hangs down from the dentils at star 8.



360. 1836 N-6 R2 MS60. Gobrecht Head. Wright Plate Coin. Very attractive lustrous medium brown. The surfaces are satiny and virtually flawless. A small spot of darker bluish steel toning over the left side of star 7, a shallow nick-like planchet chip in the field before the lips, and few very faint diagonal planchet striations near the dentils at stars 9 & 10 are the only defects. Sharply struck M-LDS with the usual strong cud break hanging down inside the dentils over star 8. Plated in the Wright book to illustrate the die variety. Ex Jim McGuigan 4/81-John D. Wright Collection.

The 2009 EAC Convention Sale, April 18, 2009



361. 1836 N-7 R4 EF40. Gobrecht Head. Ten points sharper with a thin horizontal nick on the nose and a few small splashes of reddish chocolate toning on the reverse. Otherwise the surfaces are quite nice and toned an attractive glossy light chocolate brown with frosty mint luster showing through in protected areas. MDS.



364. 1837 N-8 R1 AU55. Plain Hair Cord. Lustrous medium brown blending to light chocolate on the lower part of the obverse. The only mark on choice, satiny surfaces is a dull nick or planchet chip on the rim over star 10. Just a hint of friction on the highest points of the design. Looks mint state. Nicely struck E-MDS with die lines still clearly visible over ERICA. Ex Ferris Stamp & Coin (Albany, NY) 10/85-John D. Wright Collection.



362. 1837 N-3 R1 AU50. Plain Hair Cord. Lustrous steel brown and light chocolate with a small swipe of darker toning on the cheek into the field off the tip of the nose, plus another smaller one near the dentils right of star 12. There is a small planchet flake on the rim at ED and shallow low spots caused by debris on the die. Otherwise the surfaces are satiny and quite attractive. MDS. Ex John D. Wright Collection.



365. 1837 N-9 R1 EF45+. Beaded Hair Cord. Frosty medium brown and light chocolate with a horizontal streak of darker olive brown toning across the top of the reverse. A choice cent with outstanding surfaces and eye appeal, close to AU50. LDS with numerous die cracks on both sides and thin but clear rim cud breaks from right of star 11 down nearly to star 12. Ex Jim Fairfield 8/95-John D. Wright Collection.



363. 1837 N-6 R2 AU58. Plain Hair Cord. A mint state cent that has a tiny planchet void at the dentils under the 1 in the date, and this void contains dark planchet impurity that makes it catch your eye. Lustrous medium brown and light chocolate with delicate overtones of light bluish steel on the reverse and traces of mint color remaining on both sides. There are a few tiny splashes of darker olive brown toning at stars 7-9 and another at the top of the O in ONE. Nicely struck MDS. Ex Just Coins (Northville, MI) 6/82-John D. Wright Collection.



366. 1837 N-10 R1 MS60. Beaded Hair Cord. Lustrous bluish steel and chocolate brown with traces of slightly faded mint red remaining on both sides. The only marks are a thin planchet void extending down through ST in STATES plus a couple shallow planchet flakes right of the date, all as struck. LDS with a thin rim cud break from star 13 to under the date where it fades out below the 8. Ex Tom Reynolds-Dr. Wallace Lee, McCawley & Grellman Auctions/Superior 5/25/03:847



367. 1837 N-11 R1 AU58+. **Beaded Hair Cord.** Choice lustrous chocolate brown with a couple splashes of darker chocolate brown toning on the reverse. Great eye appeal, satiny and virtually flawless. Just the lightest touch of rub on the highest points of the design. Offers choice mint state eye appeal. M-LDS. Ex Howard R. Newcomb, J. C. Morgenthau & Co., 5/16/45:686-Floyd T. Starr, Stack's 6/13/84:344-John D. Wright Collection.



368. 1837 N-12 R3 EF45. **Beaded Hair Cord. Accessory E.** Five points sharper but the obverse is covered with microscopic planchet flakes, as struck. None of these flakes is at all distracting but there are too many to ignore. Otherwise this cent is nicely struck with only a trace of friction on the highest points of the design. Lustrous light olive and chocolate brown. Satiny mint luster covers the fields. MDS. The stray E in the leaves under the E in AMERICA (the so-called "Accessory E") is sharp.



369. 1837 N-13 R2 AU50+. **Plain Hair Cord.** Lustrous medium brown and light chocolate woodgrained with lighter and darker shades of brown and chocolate. The fields are covered with satiny mint frost. Would rate a slightly higher grade except for a small dark spot in the field left of star 9, and this spot has been very lightly abraded in its center to remove a speck of carbon. E-MDS. Ex Ray Chatham-John Ashby 10/80-John D. Wright Collection.

370. 1837 N-13 R2 AU58. **Plain Hair Cord.** Lustrous tan and light steel brown with faint hints of faded mint color on both sides. The only defects are a few tiny planchet flakes under the date, in the field over star 11, and along the dentils at stars 3-4 and 11-13, all as struck. LDS. Ex Ferris Stamp & Coin 12/84-John D. Wright Collection.

371. 1837 N-14 R2 EF40. **Plain Hair Cord. Wright Plate Coin.** Sharpness at least 5 points better but there is a dull vertical nick hidden in the hair under the R in LIBERTY and a small rim bruise at the second A in AMERICA. Otherwise this cent is quite attractive. Frosty medium brown with darker steel brown toning on the obverse highpoints. MDS. This is the plate coin for the variety in John D. Wright's *The Cent Book*. Ex Paul Saros 6/82-John D. Wright-McCawley & Grellman.



373. 1837 N-16 R3 EF40+. Plain Hair Cord. Close to EF45 but there is a tiny rim bruise over the E in STATES plus a couple very tiny rim nicks elsewhere on both sides. Otherwise this cent is choice and offers excellent eye appeal. Frosty medium brown blending to chocolate brown on the devices. Flowline luster covers the protected areas on both sides. MDS. Ex Rod Burrell 6/73-John D. Wright Collection.



372. 1837 N-15 R3 EF45. Plain Hair Cord. Wright Plate Coin. Choice glossy medium brown and light chocolate with a swipe of darker chocolate brown on the upper left of the reverse. Mint frost shows in protected areas outside the wreath. The only marks are a tiny rim nick left of star 5 and a pair of tiny ticks at the line under CENT. M-LDS. The area outside the crack over ERICA is starting to appear as a retained cud break on a slightly different plane than the rest of the field. This is the Wright plate coin for the variety. Ex French's 10/26/56:481-Dr. Ken Sartoris-Del Bland-C. Douglas Smith-Jerry A. Bobbe-Del Bland 1977-John D. Wright Collection.

374. 1837 N-17 R4 EF40+. Plain Hair Cord. Choice glossy medium brown with frosty luster in protected areas. The only marks are a few trivial ticks in the obverse fields, none notable, and a tiny splash of darker steel toning between the 1 & 8 in the date. A perfect mate for the preceding 2 lots. E-MDS. Ex Clinton Hollins 3/76-John D. Wright Collection.



375. 1838 N-2 R1 AU55. Very close to mint state but there is a light scuff on the eyebrow into the hair above. Lustrous steel brown and light chocolate. Excellent eye appeal. MDS. Ex Willard C. Blaisdell-Del Bland 4/73-John D. Wright Collection.



379. 1838 N-6 R1 AU58. Lustrous medium brown and light chocolate with a few small splashes of darker olive brown and steel toning on both sides, mostly on the reverse. A small spot of this darker brown toning on the lower half of the I in LIBERTY is a good identifying mark. LDS, both dies heavily lapped and the date now relatively weak. Ex Joseph Lepczyk Mail Bid Sale 7/84-John D. Wright Collection.



376. 1838 N-4 R2 AU55. Lustrous olive and dark steel brown with traces of frosty lighter steel brown in protected areas. No notable marks, just a hint of friction on the highest points from mint state. MDS with a small cud break on the left point of star 9 and a tiny rim cud under the I in the date. Ex Ray Chatham-John Ashby 10/80-John D. Wright Collection.

380. 1838 N-10 R1 VF35. Glossy chocolate brown. The only marks are a few ticks on the cheek and a dull nick on the jawline. Smooth, attractive surfaces offering excellent eye appeal for the grade. EDS, but not quite the earliest, with a tiny comma-shaped die crack down from the dentils between the M & E in AMERICA. Ex Madison Coin Box (Madison, WI) 4/76-John D. Wright Collection.



381. 1838 N-11/13 R4 VF20. Late State with Obverse Cud. Glossy medium chocolate with some reddish chocolate brown toning in protected areas on both sides. No marks or other distractions. LDS with a strong cud break extending well inside the dentil tips at star 1 (Newcomb's old N-13). Ex Coins & Stamps (Detroit, MI) 1/72-John D. Wright Collection.



377. 1838 N-5 R1 AU55. Wright Plate Coin. Lustrous bluish steel and olive brown. The surfaces are covered with satiny mint frost and offer outstanding eye appeal. A solid mint state example except for a couple minor contact marks, including a very light scuff that breaks the mint frost at star 13 and a very fine hairline scratch above star 12. E-MDS. Called MS60 by Bland. This is the plate coin for the variety in *The Cent Book*. Ex American Auction Association 6/75: (lot # unknown)-Bill Carmel-Del Bland 8/76-John D. Wright Collection.



378. 1838 N-6 R1 VF35. Ten points sharper with tiny nicks scattered over both sides, none notable but too many for the sharpness grade. A shallow planchet delamination under the wreath is the best identifying mark. Glossy medium brown and light chocolate with frosty luster in protected areas. E-MDS.

382. 1838 N-12 R2 EF40+. Wright Plate Coin. Glossy light chocolate brown with a spot of darker olive brown toning over the N in CENT. Smooth, virtually mark-free surfaces offering excellent eye appeal. M-LDS. This is the Wright plate coin for the variety. Ex Lillian Willins 1/79-John D. Wright

The 2009 EAC Convention Sale, April 18, 2009



383. 1838 N-14 R4 EF40. Five points sharper but there is a planchet flake in the dentils under the right side of the date, a thin nick in the field off the chin, a small rim bruise at TE in UNITED, and a shallow dig in the dentils over the E in STATES. Glossy chocolate brown. E-MDS, before any crumbling in the dentils over star 6. Ex Dr. Wallace Lee, McCawley & Grellman Auctions/Superior 5/25/03:873.



384. 1838 N-15 R5- VF25+. Slightly sharper with a few minor contact marks, including a very light rim bruise over star 7 and a few small, dull rim nicks at the top of the reverse. Glossy chocolate brown, a few shades lighter on the obverse than the reverse. A faint swipe of slightly darker chocolate toning shows in the field under star 5. Ex John Ashby 1/84-John D. Wright Collection.

385. 1838 N-15 R5- VG7. Sharpness VF30 or slightly better but moderately corroded, strongest on the reverse. No marks or verdigris. This cent was dug in central Virginia. Chocolate and darker steel brown with lighter brown in protected areas of the obverse.



386. 1838 N-16 R5- VF20. Ten points sharper with too many small nicks for the grade. A small but rather deep nick under star 5 and a pinprick over the right edge of star 3 are the notable marks. Glossy chocolate brown.



387. 1839 N-2 R2 AU58. **Head of 1838.** Frosty bluish steel and light chocolate brown with lighter brown toning in protected areas and traces of faded mint color remaining on the reverse. The fields are lustrous and there is no real wear on this cent. However, there are some extremely faint hairlines on the obverse, so calling this piece AU58 seems to be the safe way to go. The best identifying mark is a spot of darker chocolate brown toning resting at the top of star 1. MDS.



390. 1839 N-12 R4 F15. **Booby Head.** Five points sharper but there is a rim dent between stars 2 & 3 and another smaller one at the U in UNITED. Otherwise smooth and attractive with only a few minor nicks of no consequence. Glossy light chocolate and medium brown. EDS, the obverse uncracked.



388. 1839 N-3 R1 AU50. **Head of 1838.** Very attractive lustrous light chocolate and steel brown. Close to AU55 except for a small rim nick under star 13 and a very faint hairline through the mouth to above star 2 where it fades away. Nicely struck E-MDS.



391. 1839 N-12 R4 VF20. **Booby Head.** Five points sharper with a half dozen very light rim bruises and rim nicks on the obverse plus a couple more on the reverse, the only notable one a rim nick over star 7. Glossy medium brown delicately woodgrained with chocolate brown on the obverse. MDS with a die crack from the dentils through star 4 to the nose.



389. 1839 N-5 R2 EF40. **Booby Head.** Slightly sharper but the obverse was lightly cleaned and is now retoned glossy chocolate brown with lighter golden brown toning covering much of the portrait. The reverse is a very attractive glossy chocolate brown with satiny mint frost in protected areas. The toning on the reverse appears perfectly original. The only marks are a trio of tiny rim nicks over TES in STATES. Nicely struck E-MDS. Could benefit from a proper retoning on the obverse. Ex Lawrence Cobb 8/95-John D. Wright Collection.



392. 1839 N-12 R4 VF25. **Booby Head.** Attractive glossy chocolate brown with traces of slightly darker reddish chocolate brown toning in protected areas on the reverse. No defects other than a few minor contact marks consistent with the grade, including a pair of tiny nicks on the jawline. LDS with a clear bisecting die crack across the obverse. Ex Jim McGuigan 4/81-John D. Wright Collection.



393. 1839 N-12 R4 F12. Booby Head. Slightly sharper with a dull, light diagonal scratch under EN in CENT and a minor planchet lamination through that C, as struck. The obverse is unmarked, nearly flawless. Glossy light chocolate brown with a small splash of reddish brown toning at the bottom of the E in UNITED. LDS with a bisecting die crack across the obverse, and the crack is strong on this example. A nice example for the grade.

394. 1839 N-12 R4 VG8. Booby Head. Sharpness F12 but rather dull from uniform microscopic granularity. There are traces of shallow verdigris in protected areas plus a few contact marks, including a small rim bruise over star 3 and another at AM. Slightly glossy dark olive and steel. LDS with a bisecting die crack across the obverse.



395. 1839 N-14 R3 EF45. Booby Head. Five points sharper but there is a dull rim nick at star 4. Otherwise this cent offers excellent eye appeal. Frosty steel brown and light chocolate with satiny mint luster covering the protected areas on both sides. MDS.



396. 1839 N-15 R6- F12. Booby Head. Glossy steel brown and light chocolate. Smooth and attractive, only a few trivial contact marks from choice for the grade. A small nick at the dentils right of the date and two small planchet chips in the field near star 4 are the notable defects. The attribution points for the variety are clear on this example.

397. 1839 N-15 R6- F12. Booby Head. Slightly sharper with a few too many tiny contact marks for the higher grade, none notable or at all distracting. A tiny pinprick well above the right top of the N in ONE is a good identifying mark for this cent. Mostly glossy chocolate brown. There is some shallow dirt in protected areas on both sides and a small spot of microscopic roughness in the field over the 39. The attribution points are visible but not strong.

398. Group of 4 Middle Date Cents, 1816-1820. Includes 1816 N-8 VG10, 1817 N-10 VG8, 1819 N-8 VF25 but counterstamped with a large "E.A." on the obverse, and 1820 N-10 Large Date G6. A couple are slightly sharper with minor defects. Lot of 4 coins.

399. Trio of Middle Date Cents, 1816-1818. Includes 1816 N-8 M-LDS with 2 rim cud on the obverse VG10, 1817 N-10 LDS F15, and 1818 N-8 EDS F15. All are slightly sharper with minor defects. Lot of 3 coins, all from the John D. Wright Collection.

400. Pair of 1817 "Mouse Top" Cents. Includes N-3 F12 net VG10 and N-9 F12 net VG10. Both have a few minor marks resulting in the slight deduction. The "Mouse" breaks on top of the head are clear. Lot of 2 coins, both from the John D. Wright Collection.

401. Group of 6 Middle Date Cents, 1818-1831. Includes 1818 N-7 VG10, 1819 N-8 LDS with rim cud breaks from star 8 to star 11.5 F15, 1821 N-2 G5, 1822 N-12 G5, 1831 N-3 F15, and 1831 N-10 G5. Some are slightly sharper with defects but all have a clear date. Lot of 6 coins.

402. Group of 9 Middle Date Cents, 1818-1832, grading Fair-2 to G4, average AG3. Includes 1818 N6, 1818 N-7 (2), 1818 N-10, 1822 N-4, 1824/2 N-1, 1824 N-3, 1830 N-3, and 1832 N-3. Some are sharper with defects but all have a readable date. Lot of 9 coins.

403. Pair of Cents, 1819 and 1827. Includes 1819 N-9 M-LDS F15 and 1827 N-1 MDS F12+. Both are decent examples for the grade. Lot of 2 coins.

The 2009 EAC Convention Sale, April 18, 2009

404. Pair of Middle Date Cents, 1820 & 1822. Includes 1820 N-5 MDS VF20 and 1822 N-4 MDS VF20. Both are sharper with defects. Lot of 2 coins, both from the John D. Wright Collection.

405. Quartette of Middle Date Cents, 1820-1831. Includes 1820 N-7 LDS F12+, 1826 N-1 EDS VG10, 1830 N-1 LDS VG8, and 1831 N-10 LDS F15+. A nice group, free of any notable defects. Lot of 4 coins, all from the John D. Wright Collection.

406. Group of 6 Middle Date Cents, 1821-1829. Includes 1821 N-1 VG7, 1825 N-4 F12, 1826 N-6 VG10, 1827 N-11 G5, 1828 N-6 VG10, and 1829 N-2 G6. Some are slightly sharper with defects but all have a clear date. Lot of 6 coins.

407. Trio of Middle Date Cents, 1830-1838. Includes 1830 N-2 LDS VF20, 1831 N-8 M-LDS VF20, and 1838 N-4 EDS+ VF30. All are slightly sharper with defects. Lot of 3 coins, all from the John D. Wright Collection.

408. Group of 6 Middle Date Cents, 1830-1837. Includes 1830 N-8 G5, 1832 N-3 VG10, 1833 N-1 F12, 1834 N-3 G5, 1835 N-14 F15, and 1837 N-4 F15. Most are slightly sharper with defects. Lot of 6 coins.

409. Group of Five 1837 Cents. Includes N-5 VG8, N-8 F12, N-11 VG10, N-12 (Accessory E) F12 and another VG10. Some are very slightly sharper with minor defects. Lot of 5 coins.

410. Group of 10 Middle Date Cents, 1817-1826, grading G4 to F12, average G6+. Some are sharper with defects but all have a readable date. Lot of 10 coins.

411. Group of 9 Middle Date Cents, 1828-1839, grading G6 to F12, average VG7. Some are sharper with defects but all have a readable date. Lot of 9 coins.

412. Pair of Cents, 1817 and 1847. Includes 1817 N-7 with Mouse G5 and 1847 N-12 LDS with rim cud on obverse VF20. Both are very slightly sharper with minor defects. Lot of 2 coins.

413. Pair of Cents, 1837 and 1846. Includes 1837 N-12 with the 7 in the date completely missing due to a clogged die VG8 and 1846 N-9 scarce EDS, die state a, VF30 net VF20 for obverse dents. Lot of 2 coins.

Equal Finest Known 1840 N-12



414. 1840 N-12 R2 NGC graded MS65 Brown. Small Date. Lustrous dark bluish steel brown with slightly faded mint red covering the protected areas on the obverse and 20% of the reverse. The surfaces are satiny and offer outstanding eye appeal. No spots or stains. The only marks are a few very light nicks on the neck. M-LDS, die state b (Newcomb's old #13). **Our grade is MS63.** Tied for finest known honors overall with one other example but finest known of the N-13 die state.



415. 1842 N-3 R3 MS62. Large Date. Lustrous steel brown and light chocolate with traces of mint color remaining on the obverse, about 10% of the faded mint color showing on the reverse. The only marks are a shallow low spot (as struck) in the field off the tip of the nose and a spot of dark olive toning at the dentils over star 9. The reverse is flawless. M-LDS, die state b. CC#7. Ex Tony Terranova 4/87-Doug Bird-Gary Ruttenberg, McCawley & Grellman Auctions 8/19/95:286-R. S. Brown, Jr., M&G Auctions/Superior 6/2/2002:87.



416. 1842 N-6 R1 NGC graded MS65 Brown. Large Date. Lustrous chocolate and steel brown with traces of faded mint color remaining on the reverse. The only marks are a few tiny splashes of darker olive toning at stars 8 & 9 and some very shallow low spots caused by debris on the die under NT in CENT. E-MDS, die state b. **Our grade is MS62+.**

The 2009 EAC Convention Sale, April 18, 2009



417. 1842 N-9 R2 MS60. Large Date. This cent is close to gem except for a planchet crack on the edge above the O in OF plus a few shallow planchet flakes over ONE and another small fissure on the edge over ME, all as struck. The obverse is flawless and offers gem eye appeal. Lustrous light bluish steel brown and chocolate with ample faded mint red covering the protected areas on both sides. MDS, die state b. Tied for CC#7. Ex 2003 EAC Sale, McCawley & Grellman Auctions 4/26/03:722.



418. 1843 N-17 R5+ VG8. Mature Head. Sharpness VF25 but there are several small nicks on the portrait and a deep dig over the N in CENT. Recolored glossy chocolate and olive brown. Ex Harry W. Colborn, McCawley & Grellman Auctions/Superior 5/05:1727.

419. 1844 N-1 R1 NGC graded MS63 Brown. Frosty steel and chocolate brown with lustrous golden tan in protected areas. The obverse is delicately woodgrained with bluish steel brown tones. A tiny spot of reddish chocolate toning at the dentils left of star 1 and a dull contact mark on the nostril are the best identifying marks. Just a hint of friction on the highest points of the design. MDS, die state c, with tiny rim cud breaks under the date to the stars on either side. **Our grade is AU58.**

420. 1844 N-1 R1 EF40. Ten points sharper but retoned glossy chocolate and dark bluish steel brown. No spots or stains, but there are some faint hairline scratches on the cheek and neck. EDS, die state a or b. Struck slightly off center to K-7 and there are no rim cud breaks visible under the date (may be missing due to the slightly off-center strike).

421. 1844 N-5 R1 NGC graded MS62 Brown. Glossy medium brown with chocolate toning on the highpoints. Frosty luster shows through in the fields and protected areas. The only mark is a speck of carbon or crud in the field close under star 8 and a couple dull, light nicks on the throat. LDS, die state d, with a strong rim cud break from below the 18 to star 1. **Our grade is AU50.**

422. 1845 N-6 R2 EF40. Five points sharper with a few minor contact marks, including a diagonal hairline scratch in the field under the hairbun. Glossy light olive brown mixed with some darker olive brown on the reverse. Sharply struck LDS, die state d. Ex John D. Wright, 2006 EAC Sale, McCawley & Grellman Auctions 5/6/06:425.

423. 1845 N-7 R5 VF30. Slightly sharper with too many light contact marks for the grade, including a tiny rim bruise right of star 10. Glossy reddish chocolate brown with coppery tan toning on the highpoints. MDS, die state b.



424. 1845 N-8 R1 MS62. Attractive light olive and bluish steel brown, close to being what Doug Smith lovingly called a "greenie." Choice except for a light scuff in the field off the tip of the nose. Sharply struck EDS, die state a. The fields are hard and the eye appeal is excellent. Noyes photo #37486. Ex Alan Meghrig-Doug Bird 11/94-Walter Dudgeon 12/94

425. 1845 N-8 R1 NGC graded MS63 Brown. Frosty dark bluish steel brown with very faded mint color covering the protected areas on both sides. No spots or stains, only a few trivial contact marks on the cheek and in the field before the portrait. MDS, die state b. **Our grade is MS60.**

Rare Die State 1846 N-12



426. 1846 N-12 R1 F12. Tall Date. Sharpness VF25 but covered with fine granularity and there are faint, very old scratches well hidden in the patina on the obverse. Dark olive and chocolate brown. Fine verdigris or crud is dusted over all but the highpoints of this cent. Rare LDS, die state g, with a rim cud break from star 2 to star 5. Finest of only 4 known in this die state, and the cud break is clearly defined on this example. An imperfect cent but a big catch for a die state fanatic.



427. 1846 N-14 R2 EF45+. Tall Date. Choice glossy light chocolate brown with frosty mint luster showing through in the fields and protected areas. Virtually flawless except for a barely visible line of tiny pinpricks from the coronet into the field above star 5. Sharply struck EDS. Very close to AU50, and a good bath may bring out enough luster to make the higher grade a reality.

428. 1846 N-19 R4 EF45. Five points sharper with a dull rim nick at star 6 and a stain of dark olive toning at ITED. Otherwise this cent is a very attractive frosty light chocolate and medium brown. Sharply struck EDS, die state a.



431. 1847 N-10 R3 EF40. Ten points sharper but there are some faint hairline scratches on the cheek and neck plus a few more diagonal ones in the field behind the portrait. None of these scratches is visible without a glass and the eye appeal remains excellent. Glossy light chocolate and steel brown with frosty luster showing through in protected areas. MDS.

432. 1847 N-12 R3 AU50. Glossy chocolate and olive brown with a couple tiny splashes of darker olive toning in the field over star 3. The surfaces are smooth and offer excellent eye appeal, but the strike is soft over LIB, along the upper edge of the head, and on several parts of the wreath. Rare EDS, die state a, with smooth, prooflike fields on both sides (and the imperfect strike is a characteristic of the early die state).

Second Finest Late Die State 1847 N-14

Ex. Homer K. Downing-Robinson S. Brown

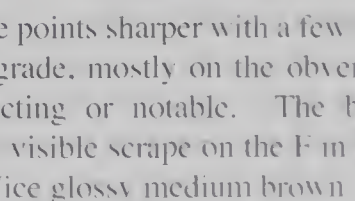
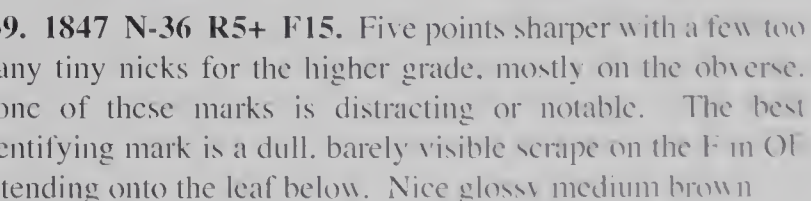


429. 1847 N-1 R2 MS60. Repunched Date. Lustrous bluish steel brown and chocolate with 10% of the mint color remaining, mostly on the obverse. Would rate a higher grade except for a thin nick on the chin and a dull rim nick at the U in UNITED. M-LDS, die state c. Repunching is still clearly visible at the lower left of all 4 digits in the date. Ex Dale Sheely.



430. 1847 N-3 R3 AU58. Repunched Date. A mint state cent that was dipped, then retoned frosty golden light olive brown and tan with hints of very faded red in some of the protected areas. No spots, stains, or contact marks. MDS, die state b late. Traces of repunching remain visible on all 4 digits in the date. Ex Chris McCawley 8/95-R. S. Brown, Jr., McCawley & Grellman Auctions/Superior 6/2/2002:347.

433. 1847 N-14 R3+ MS62. Very attractive lustrous bluish steel and chocolate with 5-10% of the slightly faded mint color remaining on both sides. The tip of the chin is not quite fully struck up and there is a barely visible diagonal nick in the field left of star 11; otherwise this cent is choice. No spots, stains, or other defects. LDS, die state d. CC#6 overall but second finest of the late state. Ex Homer K. Downing-unknown-Stack's 3/11/98:76-R. S. Brown, Jr. (a duplicate that was not part of his 6/2/2002 late date cent sale via M&G/Superior).



434. 1847 N-18 R5 EF45+. Repunched Date, the so-called Large 7 over Medium 7. Five points sharper but there is a thin nick on the jaw and a minor stain of slightly darker chocolate toning on star 4. Frosty chocolate and steel brown with satiny mint luster showing in the fields and protected areas. The portrait is slightly matte from the always present "orange peel" roughness characteristic of this die (and 1846 N-17, most likely made using the same imperfect head punch). Sharply struck E-MDS, die state a. The repunching on the date is strong and shows on all 4 digits. Removed from an NGC slab graded MS62BN (NGC label included, and it shows the attribution). Ex 1998 EAC Sale, lot 404.

435. 1847 N-19 R1 AU58. Repunched 84. Lustrous steel brown and light chocolate with traces of original mint red showing on both sides, mostly on the obverse. There is a dull nick on the throat and a small spot of darker toning at the dentils left of star 5. EDS, die state a. The repunching on the 8 & 4 is clear, strongest on the crossbar of the 4.

436. 1847 N-26 R3 AU50. Sharpness close to mint state but lightly cleaned with a few small spots of darker toning, the largest of these at the D in UNITED where the spot surrounds a speck of raised verdigris. Lustrous light golden brown and tan. MDS, die state c.

437. 1847 N-26 R3 F15. (Housed in a "National Numismatic Certification" slab graded VF20, whoever that is.) Sharpness VF20 but nicked up a bit on the portrait and there is a very light rim bruise at CA in AMERICA. Glossy olive and light chocolate brown. LDS, die state d, with a clearly defined rim cud break at OF-A, and the right end of this cud slants up to the left. A decent example of this rare die state.

438. 1847 N-32 R4 MS62. Lustrous steel and light chocolate brown with 10% of the mint red remaining, mostly on the reverse. The fields are satiny and the eye appeal is excellent. No spots or stains. Would be choice except for a light nick on the jawline left of the earlobe and a couple more even smaller ones in the field under the tip of the chin. Nicely struck EDS, die state a. Tied for CC#4.

439. 1847 N-36 R5+ F15. Five points sharper with a few too many tiny nicks for the higher grade, mostly on the obverse. None of these marks is distracting or notable. The best identifying mark is a dull, barely visible scrape on the F in OF extending onto the leaf below. Nice glossy medium brown



440. 1848 N-13 R4 MS63. **Finest Known.** Lustrous medium steel brown with 15% of the mint red remaining, mostly on the reverse. The surfaces are satiny and offer excellent eye appeal. Virtually flawless except for a tiny, barely visible nick-like planchet flake right of the lower lip and a tiny tick in the field under the chin, plus a barely visible speck of reddish brown toning at the tip of a dentil right of star 13. Nicely struck EDS, die state a. Finest of only 4 known in mint state.

441. 1848 N-16 R2 MS62. Lustrous light olive and bluish steel brown with 5% of the original mint color showing on the obverse, 20% on the reverse. No spots or stains. Would be a choice cent if not for a few small ticks on the front edge of the neck and bust tip and a light scuff on the upper edge of ER in AMERICA. E-MDS, die state b. Tied for CC#5. Ex Evan L. Kopald.

The 2009 EAC Convention Sale, April 18, 2009

442. 1848 N-25 R4 VF25. Five points sharper but there are tiny, barely visible contact marks around the obverse rim. Otherwise this cent is choice for the grade. Glossy medium brown with light chocolate toning on the highpoints. LDS, die state c.



445. 1848 N-28 R1 EF45+. Close to AU50 but there is a very shallow spot of reddish carbon in the center of the neck. No additional marks or other distractions. Frosty chocolate and dark bluish steel with a bit of lighter brown and tan faded down from mint color in protected areas on the reverse. M-LDS, die state c. Both dies were recently lapped and the reverse fields are slightly prooflike. Ex R. E. Vail, Superior 9/7/97:746.

443. 1848 N-26 R4+ VF30. Ten points sharper with a few small rim nicks on both sides and a small but strong rim dent at the E in AMERICA. Nice glossy light chocolate brown with traces of faded mint red remaining on the reverse. E-MDS, die state b. Tied for CC#6 with several other examples.

Rare Terminal Die State 1848 N-27



444. 1848 N-27 R2 F12+. Terminal Die State. Sharpness VF20 but there are a couple light pinscratches from star 4 to the face plus a couple more inside the wreath. The surfaces are smooth except for a patch of microscopic roughness between stars 3 & 4 and another at the U in UNITED where traces of greenish verdigris remain. Lightly cleaned, now retoned glossy light chocolate brown. Extremely rare terminal die state, state g, with a strong rim cud break at star 12 reaching up nearly to star 11. CC#4 of only 5 known with the rim cud. Ex Don Weathers-P. J. Moore-Bob Grellman 4/99-R. S. Brown, Jr., McCawley & Grellman Auctions/Superior 6/2/2002:600.



446. 1848 N-29 R3 MS60. Lustrous chocolate brown with delicate overtones of light bluish steel and hints of very faded mint color showing through in protected areas on the obverse. The only mark is a faint vertical hairline scratch in the field right of star 3. E-MDS, die state a. The strike is a bit soft on the hair at the ear, on the shoulder, and on the leaves under OF, as usual on this variety. Tied for CC#5. Ex Doug Bird-R. S. Brown, Jr., 1999 EAC Sale, lot 596.

447. 1848 N-32 R5 VG7. Glossy olive and dark chocolate brown. A thin diagonal scrape or planchet void under the eye fading into the cheek is the only notable mark on otherwise smooth surfaces. MDS.

CC#4 1848 N-36



448. 1848 N-36 R5 EF45+. Choice glossy medium brown with light chocolate toning on the devices. Frosty luster shows in the protected areas on both sides. Virtually perfect for the grade, close to AU50. The only marks are a tiny diagonal nick in the field off the tip of the nose and a nick-like pre-striking planchet mark over ON in ONE. LDS, die state b, with smooth, slightly reflective obverse fields. A beautiful example of this tough variety, tied for CC#4. Ex Henry T. Hettger.



449. 1849 N-8 R2 NGC graded MS64 Brown. The so-called 9 Over 8 Overdate. Attractive lustrous chocolate and steel with traces of original mint color remaining on the reverse. No stains or spots, only a few microscopic ticks on the cheek and a hint of friction on the highest points of the design. E-MDS, die state b. The repunching at the right bottom of the 9 is clear (the so-called 9 over 8 overdate). Our grade is AU58+, very close to MS60.

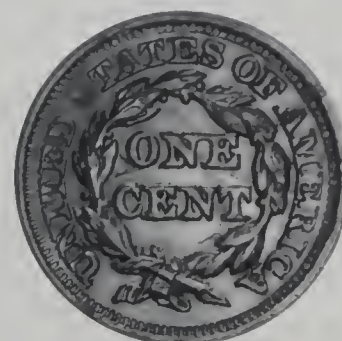


450. 1849 N-20 R1 AU55. A mint state cent that was dipped long ago and has retoned golden light brown and olive. Frosty luster covers the fields, and the only marks are a few trivial ticks on the jawline, a faint spot of darker toning in the field right of the inner curl, and a larger one close under star 4. EDS, die state a. Ex Larry Whitlow 1/90-R. E. Naftzger, Jr. (via Bob Grellman)-R. S. Brown, Jr., 1999 EAC Sale, lot 608.

Equal Third Finest Known 1849 N-24



451. 1849 N-24 R3 AU58+. Choice lustrous chocolate and bluish steel brown with 5% of the slightly faded mint color remaining on both sides. Very close to mint state, and the eye appeal is certainly consistent with a mint state grade. No spots or stains, only a few trivial ticks on both sides, mostly on the tip of the chin and under EN in CENT. E-MDS, die state a late. Tied for CC#3.



452. 1850 N-1 R2 AU55. Mint state sharpness but lightly cleaned and retoned lustrous very dark bluish steel and olive with lighter chocolate brown highpoints on the reverse. No spots, stains, or notable marks, but the color is not the best for an otherwise very attractive cent. E-MDS, die state a late.

Fourth Finest 1850 N-11



453. 1850 N-11 R3 AU50. Mint state sharpness but there is a scrape on the rim left of star 5, a light contact mark under star 3, and a diagonal streak of dark olive across the reverse from the second T in STATES down to the second A in AMERICA. Lustrous light olive and bluish steel brown with faded mint color remaining on both sides, especially on the obverse. MDS, die state b. Tied for CC#4 of the business strikes.

Equal Finest Pre-hord 1858 N-21



454. 1850 N-21 R2 MS64. Lustrous steel brown with 25% of the original mint color remaining on the obverse, at least half of the red remaining on the reverse. The only mark is a tiny speck of darker toning at the dentils over star 7. MDS, die state b, clearly earlier than the LDS (old N-10) hoard coins that make up at least 99% of the mint state examples known of the variety. Tied for CC#1 of the pre-hoard die state.

455. 1850 N-24 R5 VF20. Sharpness VF30 or slightly better with very fine roughness covering the obverse fields. Traces of shallow verdigris show in the field around stars 2 and 11, and there are a few small contact marks on the cheek. The reverse is nice, free of any notable defects. Mostly glossy light chocolate brown with splashes of reddish chocolate and olive on the obverse. MDS.

456. 1851 N-14 R2 EF40. Five points sharper with "cop" lightly scratched under the wreath, and the scratches show light coppery toning. Frosty chocolate brown with a splash of darker olive toning above S-O. A couple faint contact marks on the neck and jaw in addition to the relatively fresh "cop" scratches mentioned previously. LDS, die state c.

457. 1851 N-18 R1 AU58. Mint state sharpness but lightly cleaned and nicely retoned frosty dark bluish steel and chocolate with traces of faded red in protected areas. The only mark is a small spot of darker olive and steel toning in the hair under the ear. F-MDS, die state b.



458. 1851 N-19 R3 MS63+. Slightly faded mint red changing to medium chocolate brown on the highpoints, about 40% of the faded red remaining. The only marks are a very thin diagonal nick in the field over star 2, another in the dentils at star 11, a small splash of darker toning at the dentil tips over star 2, and traces of an old fingerprint on the upper left of the reverse. LDS, die state e. CC#4.

The 2009 EAC Convention Sale, April 18, 2009

Finest Known 1851 N-20



460. 1851 N-21 R4 VF30. Ten points sharper with a small but relatively strong rim dent under star 13 and a fine hairline scratch from the hair through the R in LIBERTY down to the field right of star 1. Otherwise very nice, nearly flawless. Glossy chocolate and steel brown with lighter brown toning in protected areas. Rare EDS, die state a, with strong, rough diagonal die lines covering the field inside the wreath.



459. 1851 N-20 R3 MS64. Frosty slightly mellowed mint red fading to steel brown on the highpoints, at least 75% of the mint color remaining on the obverse, 65% on the reverse. No spots or stains. The only marks are a small nick or planchet flake in the dentils under the first 1 in the date and a shallow low spot (caused by debris on the die) on part of the neck. LDS, die state c (Newcomb's old #28). Tied for CC#1 honors with another piece, but this one shows more mint color. Ex McCawley & Grellman Auctions/Superior 9/5/2004:1108.



461. 1851 N-27 R4 NGC graded MS65 Brown. Choice lustrous bluish steel brown with underlying faded mint color showing through in the protected areas, mostly on the obverse. The surfaces are satiny and virtually flawless. A tiny horizontal tick or planchet chip in the center of the nose is the best identifying mark, and it is barely visible. LDS, die state d. **Our grade is MS63 choice.** Tied for CC#2 of this tough die variety.

The 2009 EAC Convention Sale, April 18, 2009



462. 1851 N-35 R5+ VF35. Ten points sharper with a small but relatively deep scrape left of star 2 plus a couple tiny ticks on cheek and a couple more at the back of the ear. Otherwise the surfaces and eye appeal of this cent are excellent. Glossy chocolate brown with frosty lighter steel brown faded down from mint color in protected areas of the reverse. EDS, die state a. A strong rim cud break shows over MER. CC#4 of this rare variety.



467. 1853 N-23 R4 EF45. Lustrous dark steel brown and chocolate blending to dark olive on the reverse devices. Both sides are covered with flashy flowline luster and the eye appeal is quite nice in spite of the rather dark toning. No spots or stains, only trivial contact marks, mostly on the reverse rim. M-LDS, die state b.

468. 1853 N-32 R4+ VF35. Glossy medium brown and light chocolate changing to darker chocolate brown in protected areas. Smooth and attractive. No defects, only light wear. MDS, die state b. Ex Superior 2/07:261.



463. 1851 N-39 R3 AU50. Frosty steel brown shifting to light chocolate brown on the highpoints. Satiny mint frost shows in the protected areas on both sides. No spots or stains, only a few trivial contact marks, including a pair of small pinpricks under the eye. E-MDS, die state a. The short bar from the dentils over star 3 is clear. Ex R. S. Brown, Jr., Superior 9/30/86:1299.

464. 1852 N-23 R5 VF25. Close to VF30 but there are a few too many light contact marks for the higher grade. A light horizontal nick in the center of the neck and a small spot of dark carbon just left of star 7 are the only notable marks. Glossy light chocolate brown. EDS, die state a.

465. 1853 N-6 R1 VF25. Misaligned Dies. Sharpness EF40 or a bit better with a few contact marks on the rims, including a strong rim dent at MER. Glossy light chocolate brown. EDS, die state a. The obverse is misaligned to K-9 but the reverse is properly centered on the planchet.

466. 1853 N-16 R1 NGC graded MS64 Brown. Lustrous light steel brown fading down from mint red with half the slightly faded mint color remaining on the obverse, 10% on the reverse. No spots or stains. A dull horizontal nick high on the bust tip is the only notable defect. M-LDS, die state b late. **Our grade is MS62+, close to MS63.**



469. 1854 N-3 R1 NGC graded MS64 Brown. Lustrous chocolate and steel with 15% of the original mint red showing. There are a few small nicks on the face and a speck of dark toning midway between stars 7 & 8. Sharply struck EDS, die state a. **Our grade is MS62. Tied for CC#4.**

The 2009 EAC Convention Sale, April 18, 2009



470. 1856 N-2 R1 MS60. Lustrous light bluish steel brown and chocolate with attractive satiny mint frost covering the fields. The only marks are a couple small nicks on the rim under the 56 and a couple more at star 9, plus a tiny swipe of darker chocolate brown toning above star 10. M-LDS, die state e.

Late Die State 1856 N-3



471. 1856 N-3 R1 VF35. Glossy light olive and chocolate brown with a hint of reddish brown toning at ES in STATES. No notable defects, only a couple minor contact marks on both sides. LDS, die state g, with a strong rim cud break at star 13 reaching nearly to star 12. Tied for CC#4 honors among those known with the rim cud. Ex Hillcrest Enterprises 9/24/68:290-Jules Reiver (sold in a pile of remnants from the Reiver collection following his auction by Heritage in 1/06).



472. 1856 N-21 R2 MS60. Lustrous steel brown with slightly faded mint color covering about 20% of the reverse but only traces remaining on the obverse. This cent is choice except for faint traces of an old fingerprint in the field before the face. MDS, die state b early.

473. 1857 N-1 R1 EF45. Large Date. Glossy light chocolate and medium brown with frosty luster showing through in protected areas. No significant defects, only light wear on the highpoints. A tiny rim nick at star 6 and a dull nick on top of the E in one are the best identifying marks. LDS, die state b.

474. Blank Planchet for Mature Head Large Cent, Stage II. This planchet "grades" VF or so due to a couple small patches of shallow corrosion on both sides. Otherwise the planchet is smooth and glossy with just a few light hairline scratches and nicks. Glossy light chocolate brown. The rims are upset (stage II of the planchet preparation process). Weight 176.0 grains. Most likely from Crocker Brothers, the company that supplied the mint with finished planchets for our little babies.

475. Group of 5 Late Date Cents, 1840-1855. Includes 1840 N-5 F15, 1844 N-4 VF20, 1847 N-22 VF25, 1853 N-8 VF35, and 1855 N-13 VF25. Some are slightly sharper with defects. Lot of 5 coins.

476. Group of 5 Late Date Cents, 1841-1846. Includes 1841 N-5 VG10, 1842 N-5 VG10, 1843 N-5 Mature Head F12, 1845 N-10 F12, and 1846 N-4 repunched date F12. Some are slightly sharper with minor defects. Lot of 5 coins.

477. Trio of Late Date Cents, 1846-1849. Includes 1846 N-1 MDS (c) VF35 (removed from ANACS slab graded AU53), 1846 N-18 EDS (a) VF35, and 1849 N-27 MDS (b) F15. All are slightly sharper with minor defects. Lot of 3 coins.

478. Trio of Late Date Cents, 1846 & 1847. Includes scarce die varieties: 1846 N-15 E-MDS VG8, 1847 N-30 MDS VG7, and 1847 N-31 MDS (Large 7 over Small 7) VG10. All are sharper with defects. Lot of 3 coins.

479. Group of 9 Late Date Cents, 1846-1848. Includes 1846 N-18 VG8, 1847 N-24 F12, 1847 N-38 VG8, 1847 N-41 F12, 1848 N-6 F15, 1848 N-22 VF25, 1848 N-28 EDS F12, 1848 N-28 LDS F15, and 1848 N-31 VG10. Most are slightly sharper with minor defects. Lot of 9 coins.

480. Pair of Late Date Cents, 1846 & 1847. Includes 1846 N-7 E-MDS AU58 but extensively engraved with outstanding skill (have to see this one), and a fake 1847 obverse and reverse brockage on a non-large cent planchet weighing 225.9 grains. An odd pair. You need to look. Lot of 2 coins.

481. Group of 5 Late Date Cents, 1848-1856. Includes 1848 N-2 VF25, 1849 N-14 F15, 1850 N-4 VG10, 1854 N-14 F15, and 1856 N-14 F12. A couple are very slightly sharper with minor defects. Lot of 5 coins.

482. Group of 5 Late Date Cents, 1851-1856. Includes 1851 N-13 F15, 1851 N-13 F15 (a second example), 1853 N-6 F15, 1853 N-17 F12, and 1856 N-17 F12. A couple are slightly sharper with minor defects. Lot of 5 coins.

483. Group of 9 Late Date Cents, 1840-1849, graded G6 to F15, average VG10. Some are sharper with defects but all have a clear date. Lot of 9 coins.

484. Group of 7 Late Date Cents, 1852-1856, grading VG7 to VF25, average F12. Includes an 1855 N-9 with Knob-on-Ear. Some are sharper with defects but all have a clear date

HARD TIMES TOKENS



485. 1838 Low-54 Rulau HT-81 R1 VF35. AM I NOT A WOMAN & A SISTER type. Choice glossy medium brown and light chocolate. A nearly flawless example of this popular anti-slavery variety.

486. Trio of Hard Times Tokens. Includes Low-12 HT-25 R1 EF40, Low-47A HT-66A R2 EF40, and Low-67 HT-68 R1 AU58. All attractive pieces. Lot of 3 coins.

487. Group of 4 Hard Times Tokens. Includes Low-32 HT-47 R1 VF30, Low-36 HT-51 R2 VF20, Low-37 HT-61 R2 VF25, and Low-124 HT-194 R1 VF25. A couple are sharper with defects. Lot of 4 coins.



488. 1837 Feuchtwanger Cent Low-120 Rulau HT-268 Dies 6-I R1 AU50. Lustrous light silvery steel. No defects, only very light wear on the highpoints. Nice for the grade.

MISCELLANEOUS

489. Group of 5 Gallery Mint Large Cents, all Gem BU. Includes 1793 S-1 Chain AMERI., 1793 Chain AMERICA, 1793 Liberty Cap, 1799, and 1804. All have "COPY" imprinted on the reverse. Lot of 5 coins.

490. Pair of Gallery Mint 1793 Cents plus a Large 1965 Lincoln Cent, all gem BU. Includes a 1793 Chain AMERICA, a 1793 Liberty Cap, and a 39 millimeter diameter 1965 Lincoln Cent. Lot of 3 coins.

491. Group of 4 EAC Medals, all gem BU. Includes a 1982 15th anniversary medal, a 1992 25th anniversary medal, and two 1997 30th anniversary medals, one in copper and one in silver.

492. EAC Charter Member Medal #85 for Dr. William Hopkins. New, as struck. Dr. Hopkins was a charter member from Anchorage, Kentucky. Donated lot, all proceeds to EAC.

493. New Cotton Liners, approximately 650. There are 6 bound blocks of 100 plus about half of another block. These are old style cotton liners sewn with brown thread. Comes with the original 14 Feb 1972 sales invoice from Jon Hanson to Dr. William Hopkins.

494. Slide Set of Large Cents with Narrative. Includes 72 slides of outstanding large cents, 1793-1857, with a comprehensive narrative prepared by Jack Collins in 1976. Suitable for presentation to coin clubs, etc.

495. Four Library of Coins Collection Albums. Includes one for half cents, 1793-1857, two for large cents 1793-1820, and one for large cents 1821-1857. All are used but in good condition in spite of some writing. Lot of 4 albums.

496. Special Deluxe Hardbound Copy of the 2009 EAC Sale Catalog. One of 12 in leather, signed and numbered. Donated lot, all proceeds to EAC.

TERMS OF SALE

1. This is a private sale. Participation is by invitation only and is limited to members of The Early American Coppers Club or invited guests. The auctioneer reserves the right to refuse to honor any bid which, at his sole discretion, he feels is not submitted in good faith. The auctioneer may withdraw any lot, without prior notice, for any reason whatsoever.
2. The highest bidder acknowledged by the auctioneer shall be the buyer. In case of dispute the auctioneer may at his sole discretion reopen a lot. In all cases the auctioneer's decision shall be final and binding on bidders.
3. All sales are payable in U.S. funds immediately upon receipt of invoice unless other arrangements have been made prior to the sale. Lots delivered in state of sale are subject to all applicable state and local taxes unless appropriate permits are on file with us.
4. Postage will be added to the invoice of all successful mail bidders.
5. A 10% buyers fee will be added to all invoices.
6. Please keep in mind this is not an approval sale. All sales are considered final. Sales to the floor may not be returned for any reason save authenticity. Sales to mail bidders are final unless lot proves to have been mis-described.
7. Lots will be available for viewing at the 2009 EAC Convention in Ft. Mitchell, KY, or by appointment.
8. Mail bids or phone bids will be accepted up through the day of the sale. All bids will be reduced. Lots will open at one increment above second highest mail bidder. Bidding will proceed as competition dictates with the lot either selling to the floor or to the mail bidder at one increment above the second highest bid.
9. Consignor may bid or place a reserve bid on their own coins. Any coins repurchased by a consignor will be announced as a pass. Principals of the auction firm may consign or may bid on coins in the sale.

MAIL BIDS

Please mail all bids to:
M & G Auction
P.O. Box 161055
Altamonte Springs, FL 32716
Phone 407-682-9592
or Fax to Chris McCawley 214-618-4592

Mail Bid Form

I hereby authorize M & G AUCTIONS to execute the following bid(s) at the auction to be held APRIL 18, 2009.

Please buy the following lot(s) for me at the price(s) not exceeding those shown. The bid(s) is made subject to the "Terms of Sale", and I agree to remit promptly on receipt of invoice or notification that the bid(s) is successful. This signed bid sheet constitutes an agreement between me and M & G AUCTIONS.

NAME _____

ADDRESS _____

CITY _____ STATE _____ ZIP CODE _____

SIGNATURE _____ PHONE () _____

EAC# _____

IF NECESSARY, PLEASE INCREASE MY BID(S) BY:

10% 20% 30% Other _____ %

SPECIAL INSTRUCTIONS:

Please Mail Bids To: M & G Auction • P.O. Box 161055 • Altamonte Springs, FL 32716 • Phone 407-682-9592

FAX 214-618-4592 • E-mail bid up to the day of the sale to Bob at ljefferys@cfl.rr.com

ON DISPLAY FOR THE FIRST TIME EVER

AT EAC 2009

IN COVINGTON, KENTUCKY APRIL 16TH-19TH

**A COMPLETE COLLECTION OF EARLY
DATE LARGE CENTS BY DIE VARIETY**



**THE DAN HOLMES COLLECTION &
THE UNIQUE 1793 NC-5**

Shown in cooperation with the American Numismatic Society

PRESENTED BY

McCawley & Grellman

**IN ASSOCIATION WITH
GOLDBERG AUCTIONS OF BEVERLY HILLS**

For information contact:

M & G

P.O. Box 5250

Frisco TX 75035

972-668-1575

cmccawley@aol.com

www.earlycents.com

The 2009 EAC Convention Sale, April 18, 2009



1835 N-14



1848 N-13



1836 N-6



1849 N-24



1837 N-15



1850 N-21



1839 N-2



1851 N-19



1845 N-8



1856 N-2



1847 N-32



1856 N-21





Copyright © 2009



P.O. Box 5250
Frisco, Texas 75035
972-668-1575