

Chris McCawley and Bob Grellman

present

**The 2010
EAC Convention
Sale**

April 24, 2010





1793 C-4



1802/0 C-2



1808 C-3



1811 C-1



1793 Smith



1794 S-18b



1794 S-70



1797 S-136



1798 S-166



1798 S-179



1801 S-217



1803 S-244



Chris McCawley - Bob Grellman

present

the

2010 EAC Sale

**April 24, 2010, 7:30 p. m.
at the Double Tree Hotel Annapolis**

**210 Holiday Court • Annapolis, MD 21401
410.224.3150**

Welcome to the 2010 EAC Sale.

The sale will be held Saturday night April 24 at 7:30 p.m., at the Double Tree Hotel, Annapolis, MD.

Lot viewing will be held at the Early American Coppers Club Convention. We welcome your participation whether in person, by mail, by fax bid or by email. Please feel free to call Chris McCawley (972-668-1575) or Bob Grellman (407-682-9592) to discuss any lot in the sale.

Mail bids should be directed to Bob's Florida address (P.O. Box 161055, Altamonte Springs, FL 32716-1055). Fax bids to (214-618-4592). Email bids can be made up to the day of the sale. Email: ljefferys@cfl.rr.com

This is a private sale, you must be a member of EAC to bid - please read our terms of sale before bidding.

COLONIALS



1. 1787 New Jersey Maris 48-g R1 VG10. Slightly sharper but covered with extremely fine roughness. No marks or verdigris. Dark olive brown with chocolate devices. Rare LDS with strong die cracks on the reverse. A later die state than any in the Griffiee or Ford sales.

2. 1788 New Jersey Maris 67-v R1 VG10. Sharpness near EF40 but dull from uniform fine granularity. No marks or verdigris. Dark olive and steel.



3. 1786 Vermont VERMONTENSIVM Landscape Ryder-7 R3 ANACS graded F15. Lightly cleaned, now a slightly glossy light brown with steel brown highpoints. No verdigris, but there are traces of microscopic roughness in the fields and protected areas. The only notable marks are a couple minor scratches in the center of the obverse. Strong date and legends except for IMA in DECIMA due to that side being misaligned in that direction (K-4). Our grade is F15 net F12.



4. 1787 Fugio Cent Newman 13-X R2 AU58. A STATES UNITED type. Lustrous bluish steel and chocolate. Just a bit of light rub on the highpoints. A couple minor planchet flakes at FUG are the only flaws. Undoubtedly from the famous Bank of New York hoard as nearly half of those pieces were of this die variety. A very attractive example, virtually uncirculated.

5. 1787 Fugio Cent Newman 18-H R5 VG8. A UNITED STATES type. Sharpness F15 but there is minor pitting covering the upper right part of the obverse plus traces of microscopic roughness elsewhere on both sides. No marks or verdigris. Chocolate and olive brown.

HALF CENTS



6. **1793 C-3 R3 G6 but Counterstamped.** Glossy dark olive and chocolate. Reasonably smooth but not perfect. A planchet chip in the field off the bottom of the cap is the only significant mark other than a fancy monogram strongly stamped on the head. The monogram may be "FJM" but that's an uneducated guess. You decide. The date is easily readable and the legends are complete except for HALF CENT, which was flattened by the stamping.



7. **1793 C-4 R3 VF35.** Sharpness EF45 but a rim bruise at RTY has been smoothed. There are some additional small contact marks scattered over both sides, including a nick on the bottom of the T in UNITED, but none of these marks is distracting. Glossy light to medium chocolate brown. The surfaces are smooth except for some tiny lumps on the obverse from fine die rust associated with the late die state. Excellent color and eye appeal except for the smoothed bump, which does catch the eye. I suppose the smoothing could be improved quite easily by a good coin doctor. Ex Ray Rouse.

8. **1793 C-4 R3 VG10.** Five points sharper but covered with very fine granularity on all but the highpoints, which are smooth. Dull scratches cover the field before the face and there are a half dozen small pitmarks on the upper part of the obverse, mostly around LIB and the cap. No verdigris except for a tiny spot of reddish stuff under the N in CENT. Olive and steel with slightly glossy light chocolate toning on the devices. The date is bold and the legends are mostly strong but ERTY and ERICA are weak. MDS, Manley state 2.0. Ex Doug Bird.

9. **1793 C-4 R3 VG8.** Sharpness EF40 but there is moderate corrosion covering the lower right part of the obverse and upper right part of the reverse, and this roughness severely weakens the 3 in the date and obliterates OF on the reverse. This roughness may be the result of an incomplete planchet. The remainder of the planchet is covered with microscopic granularity that dulls the gloss but the devices and legends remain strong. A speck of greenish verdigris at TE in UNITED and a planchet flake off the chin are the only other notable defects. Chocolate and olive brown. LDS, Manley state 2.0.

10. **1794 C-1a R3 VF20.** Large Edge Letters. Sharpness VF30 but covered with extremely fine roughness under a slightly glossy dark olive and steel patina. Lighter reddish brown toning shows in the protected areas, and the color may not be original. Very fine smoothing has been done in the field before the portrait. A tiny rim nick under the 9 and a collection of ticks under the fraction are the notable marks. The 7 in the date is weakly impressed but everything else is strong. FDS, Manley state 1.0, with the reverse rotated 20 degrees CCW. Weight 104.4 grains.

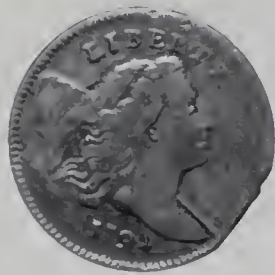


11. 1794 C-2a R2+ VF20. Small Edge Letters. Slightly sharper but there is a splash of reddish brown toning on the neck on otherwise attractive glossy light chocolate and steel brown surfaces. The toning may not be original but it certainly is attractive. Rare EDS, Manley state 1.0, before any die clashmarks. 106.1 grains. Ex. Ray Rouse.

Rare 1794 C-2b



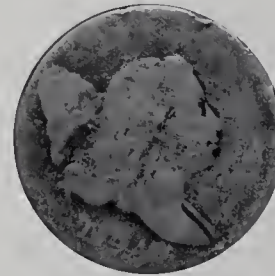
12. 1794 C-2b R6 VG7. Large Edge Letters. Sharpness F15 or slightly better but the planchet was crimped or flattened over the head obliterating LIBER and the opposing fraction and UN. Otherwise the surfaces are free of notable marks. Covered with uniform fine granularity under a slightly glossy dark olive and steel patina. No verdigris. The date and legends are strong (except for the flattened details already mentioned). The edge lettering is bold and complete except for a couple letters of DOLLAR which were affected by the flattening above the head. An important example of this rare "B-Girl." 104.5 grains. Discovered unattributed by Chris Young at the 1996 ANA Convention.



13. 1794 C-4a R3 F12+. **Incomplete Planchet (end of strip clip)**. Small Edge Letters. Nice glossy chocolate brown. Smooth surfaces. The only mark not associated with the incomplete planchet is a rim nick over the E in LIBERTY. An attractive piece that is nearly choice except for the incomplete planchet at K-4 on the obverse rim and over AME on the reverse. The date and legends are strong. M-LDS, Manley state 3.0.



14. 1794 C-5a R4+ VF20. Small Edge Letters. Rotated Reverse. Nearly ten points sharper but there are specks of greenish verdigris on the reverse, mostly at TA in STATES and at LF in HALF. The surfaces are decent but not perfect as traces of extremely faint roughness can be found on both sides, mostly on the reverse. The obverse is an attractive glossy chocolate brown with lighter brown toning on the devices. The reverse is a slightly less glossy mix of light olive and reddish chocolate. EDS, Manley state 1.0, with the reverse rotated 55 degrees CW. Weight 106.3 grains.



15. 1794 C-6a R5+ G4. Small Edge Letters. Very slightly sharper with a rim dent opposite the eye and a half dozen fine hairline scratches on the portrait. The surfaces are reasonably smooth and the color is a decent glossy medium brown with reddish chocolate in protected areas. The date is clear and the legends are readable. Weight 99.2 grains. Ex Dr. Wallace Lee, McCawley & Grellman Auctions/Superior 5/25/03:85



16. 1794 C-7 R5+ VG7. Sharpness VF20 but slightly bent and covered with contact marks, including a few rim dents and a short but rather deep scratch above the 7. Rather glossy dark chocolate and olive brown. The date and legends are complete and clear. MDS. Weight 103.4 grains.



17. 1794 C-9 R2 VF25. Ten points sharper with microscopic granularity under a slightly glossy dark olive and steel brown patina. The highpoints are a lighter shade of chocolate brown. No verdigris, but there are a few marks. These include a nick down the left side of the B in LIBERTY and four short scratches at the bottom of the reverse. LDS, Manley state 3.0. Weight 105.5 grains.



18. 1794 C-9 R2 F12. Slightly sharper and choice except for some faint scratches in the field before the portrait. These marks are visible only with the aid of a glass. Glossy light chocolate brown. Date and legends are strong. MDS, Manley state 2.0.

19. 1794 C-9 R2 MS60 ANACS. Fully lustrous light brown color with traces of original mint red how ever there is striking weakness on Liberty's chin and from two to four o'clock on the reverse. Technically a mint state coin but the striking anomaly surely reduces the value. Ex Roger Cohen.

The 2010 EAC Convention Sale, April 24, 2010

20. 1795 C-1 R2 Fair-2. Lettered Edge. Very slightly sharper on the obverse, but the date is incuse from corrosion (yes, this does happen when the conditions are right). The second S in STATES is also incuse for the same reason. The surfaces are uneven, and the only things still decent on this piece are the portrait, LIBERTY, and the edge lettering. Rather glossy steel and chocolate.

21. 1795 C-4 R3 PCGS graded VF20. Punctuated Date with Plain Edge. Sharpness VF20 or very slightly better but the surfaces are a bit dull from extremely faint roughness. No verdigris, and the only significant marks are very fine hairline scratches that cover most of the portrait with some extending into the field at the left. Slightly glossy mix of light chocolate and darker olive brown. The date is bold and the legends are strong except for HALF CENT, which is weak (as usual). MDS, Manley state 2.0. Our grade is net F15.



22. 1795 C-6a R2 VG7. Struck over a Talbot Allum & Lee Cent. Several points sharper but covered with fine scratches, mostly on the obverse. All the scratches are old and blend with the attractive glossy medium brown and light chocolate toning. Unevenly struck on a cut-down TAL Cent. The lower part of the obverse and upper section of the reverse are weakly impressed while the remainder of the details were properly struck. The date and STATES OF are weak but remain readable while everything else is strong. Clear evidence of the TAL undertype shows near the dentils behind the portrait. EDS, Manley state 1.0. Weight 75.9 grains.



23. 1795 C-6a R2 Fair-2. Flipover Triple Strike. Sharper but bent and lightly corroded. She's not pretty, but she has attributes that will place her on more than one dance card. The reverse was struck at least two times with an extra STATES tight to the rim above where another STATES was struck. On the obverse, a third reverse consisting of the fraction, stem, and U show under Ms Liberty. The portrait and LIBERTY are complete, but the date was replaced by the fraction. Slightly glossy dark olive and chocolate. Weight 73.8 grains.



24. 1795 C-6b R6 VG8. Struck over 1795 S-78 Large Cent. Sharpness VF20 but banged up a bit, strongest at AMERI. The date and legends are strong except for the first A in AMERICA thanks to a dent on part of that letter. Steel brown and light chocolate with dark olive brown toning in protected areas. Struck on a spoiled 1795 S-78 large cent cut down to make a half cent planchet. The bust and top of the 5 in the date of the large cent are clearly visible in the field left of the date, and that's all you need to make the positive attribution on the undertype. A really neat piece, albeit a rather ugly one. Weight 100.4 grains.

1795 C-6 a/b?



25. 1795 C-6a/b R? G6. A few points sharper with minor roughness in the fields plus some tiny pits at HALF. No marks or verdigris. Rather glossy chocolate brown. The date is weak but readable and the legends are clear except for weakness on HALF CENT, which is faint. Weight 93.5 grains, way too heavy for 6a, but too light for a 6b.



26. 1797 C-2 R3 VF35. Slightly sharper but lightly cleaned and retoned glossy chocolate and darker olive brown. Satiny frost covers the protected areas outside the wreath and this piece offers nice eye appeal for the grade. The only mark is a small nick on the ribbon left of the fraction bar. The obverse is slightly misaligned to K-10.5 leaving long dentils at the bust tip. Weight 78.0 grains.



27. 1797 C-2 R3 VG7. Struck on a 1794 TAL Cent with New York. Glossy chocolate and steel. The surfaces are smooth and this piece offers excellent eye appeal for the grade. Bold undertype from the 1794 TAL Cent shows on the right half of both sides. Softly struck on the lower left of the obverse and right edge of the reverse but everything else is strong for the grade. Weight 94.5 grains. Ex Bill Weber, McCawley & Grellman Auctions/Superior 6/3/2002:2274.



28. 1797 C-3b R4 VG8. Lettered Edge. Struck on a spoiled cent planchet. A couple points sharper with a thin scrape in the field above the head and microscopic roughness covering the fields and protected areas. Recolored a slightly glossy dark steel brown and olive. The date is bold and the legends are strong. EDS, Manley state 1.0. Apparently struck on a spoiled cent planchet as there is a depression under the fraction caused by an off-center strike. Weight 69.6 grains. Ex Mike Demling 4/97-2001 EAC Sale, McCawley & Grellman Auctions 3/31/01:46.



29. 1797 C-3b R4 AG3. Lettered Edge. Very slightly sharper but there is a deep scratch from the top of the head to LI with an extension on the chin plus two pits in the center of the reverse. The fields are covered with fine granularity while the devices are smooth. No verdigris. Slightly glossy dark olive with chocolate toning on the devices. LDS, Manley state 3.0. The date is clear, LIBERTY is strong, and half of the reverse legend remains readable. The all-important edge lettering is bold and complete. Weight 79.8 grains



30. 1800 C-1 R2 F15. Smooth and attractive, just a few trivial marks from choice. Glossy chocolate brown. A tiny rim nick under the 18 and a minor rim bruise at the D in UNITED are the significant marks. MDS, Manley state 3.0, with rim crumbling at IB.



31. **1800 (1802?) C-1 R2 Fair-2.** Struck over a spoiled off-center large cent with TATE where the date would have been and a barely visible I just left of first A in AMERICA on the reverse. The sharpness is slightly better, perhaps AG3, but the planchet is covered with moderate granularity. Reddish olive and chocolate. In my opinion, the position of LIBERTY relative to the top of the head and among the letters themselves tells me this piece is really an 1802 C-1. Safety dictates going with the 1800 C-1 attribution for the sale, but my vote (after very careful examination) is for the 1802 version. Proof, however, would be difficult if not impossible.

32. **1802/0 C-2 R3 F15+.** Overdate 2 over 0. Slightly sharper but there are a few dull, light scratches in the obverse fields, strongest in the field under the ribbon. Otherwise this piece is choice. Glossy light to medium chocolate brown. E-MDS, Manley state 2.0. The overdate is sharp. Weight 80.3 grains.



33. **1802/0 C-2 R3 VG10+.** Overdate 2 over 0. Very attractive glossy light chocolate and olive brown. Smooth and virtually flawless, close to F12. E-MDS, Manley state 2.0. The overdate feature is sharp.



34. **1802/0 C-2 Electrotype Copy EF40.** Glossy reddish brown and chocolate. Essentially as made. This piece was made from the Breen plate coin (the big photos), and this is obvious thanks to the two short scratches at ME. The host piece has a long, very distinguished provenance, including the Brobston collection.



35. **1803 C-1 R1 PCGS graded XF45.** Choice frosty chocolate and steel brown with lighter steel brown toning in protected areas, especially on the reverse. Traces of satiny luster show through in the protected areas. The only defects are a dull nick on the bust and traces of dirt in the protected areas. I suspect a proper bath would uncover lots of mint frost and improve the already excellent eye appeal afforded by this half cent. M-LDS, Manley state 3.0. Our grade is VF35, perhaps better after that bath.

Outstanding 1803 C-2



36. **1803 C-2 R4 F15.** Five points sharper but there is a small patch of very light corrosion at RICA. Otherwise the surfaces are smooth and choice offering outstanding eye appeal for the grade. Glossy chocolate brown, slightly lighter in protected areas and darker on the highpoints. E-MDS, Manley state 3.0.

Terminal Die State 1803 C-2



37. **1803 C-2 R4 G5.** Glossy chocolate brown. Decent surfaces, but a glass reveals some dull, light scratches and tiny ticks scattered over both sides, none notable or distracting. The date and legends are complete and clear except for weakness on HALF CENT. TDS, Manley state 7.0, with a strong, real (not retained) cud break at STATE.



38. **1803 C-3 R2 VF30.** Choice glossy chocolate brown with steel brown highpoints and traces of slightly lighter chocolate brown toning in protected areas. Just a few trivial contact marks. A fine crack-like planchet lamination right of the D in UNITED offers the best identifying mark. A premium half cent for the grade. E-MDS, Manley state 2.0. Ex 1982 EAC 3/14/82:145.



39. **1803 C-3 R2 PCGS graded XF40.** Frosty chocolate and darker steel with slightly lighter toning in protected areas. The surfaces are a bit dull from a thin layer of natural oxidation (which should brush off easily), but I can find no defects other than a faint stain in the field left of the lower curls. MDS, Manley state 3.0. Our grade is VF30, but I suspect this piece has upside potential if cracked and brushed properly.



40. 1803 C-4 R4 VF35. Glossy steel brown and chocolate with frosty lighter steel brown in protected areas. Just a few trivial marks, including a thin nick on the 3 and a tiny rim nick off the bust tip. LDS. The reverse is not upset and is rotated only 10-15 degrees CW.



41. 1803 C-4 R4 VF30. Double Struck. Glossy chocolate brown with some darker steel and olive brown toning on the obverse and frosty lighter brown toning in protected areas on the reverse. Excellent surfaces and eye appeal. The only marks are a tiny tick in the field over the bust tip and a shallow flaw at the top of the E in CENT. The reverse is not upset (as is often the case for the variety). The initial strike was slightly off center while the second was properly centered and rotated 15 degrees relative to the first. Undertype is obvious on the neck, throat, above the hair ribbon, and arcing through the date. The reverse has incuse letters or numerals on the rim above TATE suggesting the initial strike may have been an off-center brockage impression. This is a beautiful example of the variety, and the error strike is a remarkable bonus.

42. 1804 C-1 R3 VF35. Perhaps slightly sharper but there are some tiny rim nicks on the reverse. The obverse is glossy light chocolate and steel brown with slightly darker olive toning on the highpoints. The reverse is glossy bluish steel and light olive with frosty lighter brown toning in protected areas. LDS, Manley state 2.0.



43. 1804 C-1 R3 F15+. Attractive glossy chocolate brown and steel. Choicest except for a small spot of raised reddish chocolate verdigris left of the base of the L in LIBERTY, and this defect does not catch the eye. MDS, Manley state 2.0.



44. **1804 C-4 R5 VG8.** Sharpness F12 with dull scratches from the eye into the field plus additional minor contact marks elsewhere on the obverse. The reverse is nice. The obverse is glossy reddish chocolate and steel while the reverse is a more attractive glossy chocolate. LDS, Manley state 3.0. The date and legends are complete and strong.



47. **1804 C-6 R2 VG10.** Spiked Chin. Slightly sharper but there are too many small contact marks on the obverse for the sharpness grade, mostly on the neck. Glossy chocolate brown with a hint of reddish chocolate in protected areas. Rare E-MDS, Manley state 3.0, Braig 2.2. The die crack up from the M is strong. Ex Gene Braig 1991-Wally Gilligan, Bowers & Merena 5/27/94:68.



45. **1804 C-5 R4 AU55 but . . .** Lustrous chocolate and steel brown with lighter steel brown toning covering the protected areas on the reverse. This piece would be a spectacular example of the die variety, but someone decided it would be nice to change the 4 into a 1 to create an 1801 half cent to fill that tough hole in the collection (of an idiot). The work was done with some skill, but the change is obvious under magnification. I'm sure the obverse was retoned following the work, but the reverse appears totally original. LDS, Manley state 6.0.



48. **1804 C-6 R2 VF20.** Spiked Chin. Glossy chocolate and olive brown with frosty lighter steel brown toning in protected areas on the reverse. Excellent eye appeal and only a few trivial marks. M-LDS, Manley state 9.5, Braig 6.5.



46. **1804 C-6 R2 PCGS graded VF35.** Spiked Chin. Glossy olive and steel mottled with some slightly lighter steel brown tones on the obverse. A thin vertical nick under the L in LIBERTY is the only notable mark. EDS+, Manley state 1.0. The die cracks on the reverse are very fine. The spiked chin feature is obvious. Our grade is VF20.



49. **1804 C-6 R2 VF25.** Spiked Chin. Sharpness EF45 or slightly better but there is light graffiti in the obverse fields and some minor roughness at the ear. The reverse is essentially flawless. Glossy olive, steel, and chocolate brown with satiny frost in protected areas on the reverse. LDS, Manley state 11.0, Braig 8.0, with strong cud breaks around the reverse legend.



50. **1804 C-7 R4 VF20 but Holed.** Spiked Chin. Slightly glossy dark olive and chocolate. The surfaces are covered with very fine roughness under the rather thick patina. You could pick out a couple trivial marks, but why bother when there is a large hole punched through the bust tip. E-MDS, Manley state 3.0.



51. **1804 C-7 R4 G4. Spiked Chin.** Sharpness VG7 or better but covered with moderate to strong granularity. The roughness is uniform and there are no other defects. Dull dark steel and olive. The date and legends remain clear. LDS, Manley state 7.0, with strong cud breaks at OF-AMERI.



55. **1804 C-10 R1 PCGS graded AU55.** Frosty light steel brown and tan. Most likely dipped or lightly cleaned at one time, but the eye appeal is quite nice. A spot of dark steel toning on the left side of the 4 and a couple tiny spots or similar toning elsewhere on the obverse are the only notable distractions. LDS, Manley state 3.0. Our grade is EF45+, net EF40.



52. **1804 C-8 R1 EF40. Double Struck.** Spiked Chin. Glossy chocolate brown with frosty light brown in protected areas on both sides, especially on the reverse. Choice except for a couple tiny rim nicks on the obverse. LDS. Manley state 6.0, with a strong retained cud break connecting LIBER to the rim above. The spiked chin feature is strong. This piece was double struck with fine doubling showing on the entire obverse, even on the retained cud, with an offset between impressions of less than a millimeter. However, there is no trace of doubling on the reverse, which suggests the second strike may have produced a reverse brockage on a second planchet.



56. **1804 C-10 R1 VF25. Double Struck Off Center.** Choice glossy chocolate brown. Flawless except for a few trivial contact marks. Double struck but the offset between impressions is quite small, less than a half millimeter. The doubling shows on both sides. In addition, both strikes were slightly off center to K-1 and the reverse is rotated 25 degrees CCW from a normal head-to-foot die orientation. A very attractive example of two minor mint errors.

53. **1804 C-8 R1 VG10.** Spiked Chin. Slightly sharper but lightly cleaned and retoned glossy steel brown. Extremely faint roughness covers the fields, but it takes a strong glass to see. LDS, Manley state 6.0, with a raised retained cud at LIBER.



57. **1804 C-11 R2 VG8. Plain 4 with Stems. Double Struck.** Slightly sharper but the obverse fields were very lightly smoothed (reason unknown). Recolored glossy medium reddish brown and chocolate. MDS, Manley state 2.0. Double struck with an offset of about a half millimeter. The doubling is obvious on both sides.



54. **1804 C-9 R2 VF25+.** Frosty chocolate brown with lighter brown toning in protected areas. No defects and excellent eye appeal for the grade. A splash of darker olive toning at the D in UNITED is the only mark. LDS, Manley state 5.0. The cud break at RTY is bold.

58. **1804 C-12 R2 F15. Crosslet 4, Stemless Wreath. Triple Struck.** Slightly sharper but there is a dull dent under the earlobe and a dull nick over the L in HALF. Glossy chocolate with lighter brown in protected areas. This piece was struck three times. The first(?) two impressions were off center by 60% and 95% and left only an arc of dentils both times. Those impressions appear to be from another struck half cent, and I'm not certain this happened during the minting process. But that's my best guess. LDS.

59. **1804 C-12 R2 VF25. Crosslet 4, Stemless Wreath. Possibly Broadstruck.** Slightly sharper but lightly cleaned and retoned glossy light olive with splashes of lighter reddish brown on the obverse. No roughness or notable signs of contact, but the retoning is not especially attractive. This piece has the appearance of a broadstruck half cent with wider than normal rims and flattened dentils.



60. **1804 C-13 R1 EF45. Plain 4, Stemless Wreath. Misaligned Dies.** Ten points sharper but there are a couple small, unobtrusive spots of reddish carbon on both sides, the most obvious of these in the field before the throat. Otherwise the surfaces are lustrous and attractive. Frosty dark steel brown and chocolate mottled with lighter brown on the reverse. The obverse may have been very lightly cleaned and retoned, but the eye appeal is decent. EDS, Manley state 1.0. Struck with the reverse die misaligned to K-1.5.

61. **1804 C-13 R1 EF45. Plain 4, Stemless Wreath.** Frosty light olive and chocolate with hints of bluish steel, especially on the reverse. Virtually flawless, a choice example offering excellent eye appeal. MDS, Manley state 2.0. Ex Robison, Stack's 2/10/82:324.

62. **1804 C-13 R1 VG8. Plain 4, Stemless Wreath. Double Struck over Reverse Brockage.** Very slightly sharper but lightly cleaned and retoned glossy steel and chocolate brown. No roughness, only minor contact marks, including a scrape on the edge over STAT. MDS, Manley state 2.0. Struck over a reverse brockage with the normal reverse undertype clearly visible on the lower part of the portrait and the incuse brockage impression, including all of HALF CENT, clear inside the wreath of the second strike. The reverse of the normal strike is rotated 30 degrees CW relative to the normal obverse.

63. **1804 C-13 R1 VF35. Plain 4, Stemless Wreath. Broadstruck.** Choice glossy chocolate brown with frosty lighter brown toning in protected areas. Great eye appeal. The only marks are a couple light nicks on the neck and a dull rim nick at TA in STATES. This piece was broadstruck with wide, flat rims. The surfaces have the look of a higher grade (which it may warrant). MDS, Manley state 2.0. Removed from an NGC slab graded EF40.

64. **1804 C-13 R1 VF25. Plain 4, Stemless Wreath. Double Struck.** Glossy dark olive and steel with traces of lighter brown in protected areas. Smooth surfaces and only a few minor marks. The notable ones are a barely visible rim bruise at L in LIBERTY and a planchet flake in the dentils under the fraction. MDS, Manley state 2.0. Double struck. The obverse shows two impressions, the first slightly off center to the bottom. The second strike was properly centered and rotated 15 degrees leaving clear evidence of the first strike on the neck and bust plus the upper half of the 1 clearly evident in the curl left of the date. The reverse shows only a single impression from the die plus a slightly off-center impression from a new blank planchet (which became an off-center brockage strike). Perhaps it was late in the day and the rum rations had been distributed. They're only half cents; who cares? We do, and thanks.

65. **1804 C-13 R1 F15. Plain 4, Stemless Wreath. Triple Struck.** Five points sharper but there is a thin planchet lamination near the rim opposite the chin plus a patch of very shallow corrosion in the field off the chin. Rather glossy chocolate brown mixed with some reddish chocolate toning on the obverse. Triple struck. Two impressions were properly centered but the offset between those strikes was very small, less than a half millimeter. Another strike left a 70% off-center impression of a blank planchet on the reverse (creating an off-center brockage impression on that planchet). Yet another mint error from the fellows that struck this die variety. From my experience, 1804 C-13 is represented by more mint errors than any other variety of early copper, half cent or large cent.

66. **1804 C-13 R1 VF25. Plain 4, Stemless Wreath.** Sharpness EF40 with fine scratches on the head and small patches of verdigris at ES OF. Otherwise this piece is free of defects. Frosty dark steel and olive brown. Nicely struck MDS, Manley state 2.0. Ex 2009 EAC Sale, McCawley & Grellman Auctions 4/18/09:17.

67. **1804 C-13 R1 VF35. Plain 4, Stemless Wreath.** Slightly sharper but there is a dull scratch from the forehead down to the chin where it fades out. Otherwise this piece is choice. Attractive chocolate and olive brown with frosty lighter brown in protected areas on the reverse. MDS, Manley state 2.0.

68. **Trio of Half Cents.** Includes 1804 C-13 VG10 net G4, 1805 C-4 VG10 net G6, and 1807 C-1 F15 net VG10. All are netted for imperfect surfaces. Lot of 3 coins.

69. **1805 C-1 R2- NGC graded VF30. Stemless Wreath.** Frosty reddish steel brown and olive with lighter brown toning in protected areas. There are a couple faint horizontal hairline scratches in the field before the eye, and both sides display traces of Care or Blue Ribbon that should be smoothed out by brushing (or removed altogether) to improve the luster and eye appeal. LDS, Manley state 2.0. The reverse is rotated 25 degrees CW. Our grade is VF30.

The 2010 EAC Convention Sale, April 24, 2010

70. **1805 C-1 R2- VF20. Stemless Wreath.** Sharpness EF45 or so but this piece has been whizzed (or at least cleaned in an acid bath). Retoned dark steel and chocolate with some tan showing from the cleaning. LDS, Manley state 2.0. The rim cud right of the fraction is clear and the reverse is rotated 15 degrees CW.



75. **1806 C-4 R1 AU50. Large 6 with Stems.** Frosty steel brown and chocolate with ample traces of very faded mint color showing through in protected areas on the reverse. A swipe of darker olive toning in the field behind the head and a thin struck-through line arcing above HAL are the notable marks. Very little if any wear, but softly struck on the bust and at the top of the wreath, as usual on this variety. Might benefit from a bath to remove some crud and bring out the underlying mint luster. E-MDS, Manley state 1.0, with the reverse rotated 15 degrees CW. Ex 1983 EAC Sale, lot 107.

71. **1805 C-2 R5 G6+ but Plugged.** Small 5 with Stems. Attractive glossy dark steel brown and chocolate. Smooth and virtually mark-free, but a hole was expertly plugged in the left obverse field and at the opposing spot right of the D in UNITED. Obviously the toning is not original, but it could easily pass as such. The best identifying mark is a tiny planchet void or depression under the first S in STATES.



76. **1807 C-1 R1 VF20.** Five points sharper but there are contact marks on the obverse rim spaced in a triangle pattern suggesting they were caused by tacks used to display this piece on a board. Otherwise there are only a few trivial contact marks, including a small nick on the eyebrow, and no hint of roughness. Frosty chocolate and steel brown with lighter brown toning covering the protected areas on the obverse. E-MDS, Manley state 1.0 late.

72. **1805 C-3 R4 VG7. Small 5 with Stems.** Very slightly sharper with microscopic roughness under a rather glossy olive and chocolate brown patina. No verdigris and only a few minor marks, including a small rim nick over E in LIBERTY and another over the second T in STATES. LDS, Manley state 2.0, with strong swelling in the field before the portrait. The date and legends are complete and strong except for the usual weakness on HALF CENT thanks to the obverse swelling. Ex Roger Cohen (privately).



77. **1807 C-1 R1 VF30.** Ten points sharper but recolored frosty steel brown and chocolate. There is a shallow depression in the hair left of the forehead, apparently as struck, and a tiny planchet elip affects the rim over the second A in AMERICA. LDS, Manley state 3.0.

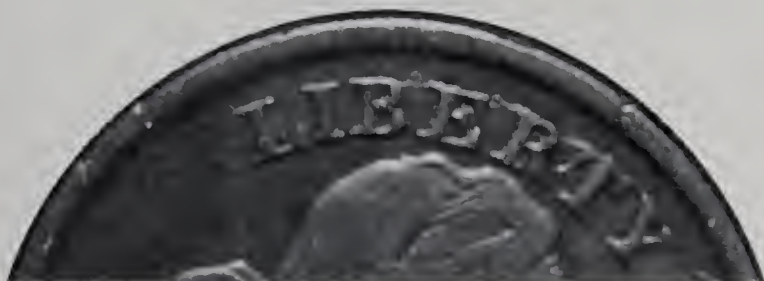
73. **1806 C-1 R1 VF25. Stemless Wreath.** Sharpness EF45 but there are scratches on both sides, strongest on the obverse. Glossy chocolate brown. The reverse is rotated 15 degrees CCW.



74. **1806 C-2 R4 F12. Small 6 with Stems.** Sharpness VF20 but there are a few old scratches in the field before the portrait, all blending perfectly into the toning. Slightly glossy reddish chocolate and olive brown. MDS, Manley state 2.0.



78. **1808/7 C-2 R3 VG7. Overdate 8 over 7.** Very slightly sharper with a patch of roughness in the field at the end of the nose and a tiny rim bruise under the 1 in the date. There are traces of shallow dark crud in a few of the protected areas but the surfaces are mostly free of distractions. Lightly cleaned and retoned a mostly glossy steel brown and chocolate. EDS, Manley state 1.0. The date and legends are strong and the overdate feature is clear. Ex 2008 EAC Sale, McCawley & Grellman Auctions 5/10/08:99.



79. **1808/7 C-2 R3 VG8+. Overdate 8 over 7.** A couple points sharper but there is a small rim bruise under the second 8 and myriad faint hairline scratches on the portrait. Otherwise this piece is very nice for the grade, nearly choice. Glossy chocolate and steel brown. E-MDS, Manley state 2.0 late. The die crack at BERTY is strong.



80. **1808 C-3 R1 VF25. Rotated Reverse.** Frosty chocolate brown with lighter chocolate and steel brown toning covering the devices. Flowline luster covers the protected areas outside the wreath. No notable defects. MDS, Manley state 3.0, with the reverse rotated 50 degrees CCW.

81. **1808 C-3 R1 AU50.** Sharpness near mint state but there are a half dozen tiny rim nicks on the reverse, a collection of tiny pinpricks right of the E in AMERICA, and a splash of dark olive brown toning in the field before the chin. Otherwise the toning is a very attractive lustrous light chocolate and steel with darker steel and olive toning on the devices. MDS, Manley state 3.0. The reverse is rotated only 5 degrees CW relative to a perfect head-to-foot die orientation.



82. 1809 C-1 R4 VG8. A couple points sharper but recolored glossy steel brown and chocolate with some lighter steel brown toning bleeding through in protected areas on the reverse. The only notable mark is a spot of darker toning at the right top of the E in CENT. EDS, Manley state 1.



83. 1809 C-1 R4 AG3. A couple points sharper but moderately corroded, although the roughness is closer to strong in a couple places. No marks or verdigris. Dark olive with chocolate highpoints. The date is strong. Rare LDS, Manley state 3.0, with a strong cud break connecting MERI to the rim above. The cud is bold in spite of the poor condition.



84. 1809 C-2 R3 VF25. Five points sharper but lightly cleaned and retoned glossy light olive and chocolate. Smooth surfaces and only a few trivial contact marks, including a dull rim nick at the bottom of the reverse. LDS, Manley state 4.0, with clearly defined rim cud breaks at F-A and over M. The reverse is rotated 15 degrees CCW.

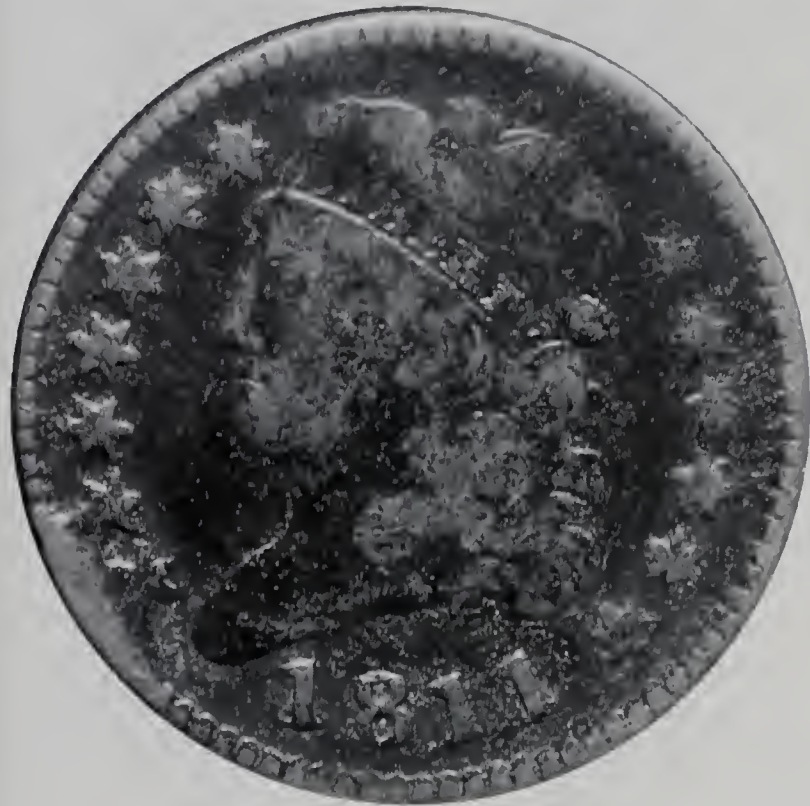


85. 1809 C-4 R2 VF25. Circle Inside 0. Frosty chocolate brown. Nice eye appeal. The only defects are a couple minor rim nicks and a very light rim bruise at the A in STATES. EDS, Manley state 1.0. Struck slightly off center to K-3, and the reverse is slightly misaligned to K-4.5 as well. The "circle inside 0" defect (wrong punch) is sharp.



86. 1809 C-6 R1 VF25. Tab Double Strike. Slightly sharper with shallow reddish verdigris dusted into the protected areas on the reverse. The only mark is a rim nick at the top of the obverse. Glossy olive brown and reddish chocolate with flowline luster in the protected areas. M-LDS, Manley state 5.0, with the reverse rotated 150 degrees CCW. A tab strike 95% off center outside stars 3-5 is an obverse brockage impression. The tab shows dentils plus part of an incuse star from the previously struck piece. A really neat error.

87. Trio of Half Cents. Includes 1809/6 C-5 LDS VG8, 1809/6 C-5 VG7 net G6, and 1826 C-1 F15 net VG10. Lot of 3.



88. 1811 C-1 R7 G6. 2-Star Cud. Sharpness near VG10 but covered with uniform fine to moderate granularity (although the highpoints are rather smooth). No notable verdigris (although some of the roughness may be removable crud or soft verdigris), and the only marks are some nicks over AL in HALF and a small rim nick above the second S in STATES. Slightly glossy dark olive with lighter chocolate toning on the highpoints. Extremely rare M-LDS with a strong 2-star cud break involving stars 1 & 2. About a half dozen are known in this die state, and none of those is nice. In fact, I believe this piece, with all its faults, is one of the finest known. I have seen nothing finer.



89. 1811 C-1 R5 G6. 4-Star Cud. A couple points sharper with traces of minor roughness on both sides. No verdigris or notable contact marks. A small pit close under the A in HALF is a good identifying mark. Glossy reddish chocolate and steel. The date is bold and the legends are strong except for the usual weakness at TED-ST associated with the late die state. LDS, Manley state 5.0, with a large cud break involving the first 4 stars.



90. 1811 C-1 R5 AG3. 4-Star Cud. Very slightly sharper but dull and covered with fine to moderate roughness. No marks or notable signs of verdigris. Dark olive and steel. Terminal die state, Manley state 5.0, with a large cud break involving stars 1-4. The date and cud break are strong. Ex Bill Faskow 11/3/73.



91. 1811 C-2 R3 F15+. Sharpness EF40 but there are a few scratches on the obverse and more on the reverse, the strongest ones over RT in LIBERTY and at ME in AMERICA. Glossy chocolate brown. EDS, Manley state 1.0, before the strong die clashmarks on the obverse. The obverse is properly centered on the planchet while the reverse is misaligned to K-9.5, and the reverse is rotated 15 degrees CW. Great sharpness for an 1811 half cent, but far from perfect.

92. 1811 C-2 R3 VG10. Slightly sharper with a few long, thin nicks or short scratches on both sides. The surfaces are decent, free of any corrosion or verdigris. Very lightly cleaned, now toned glossy light olive and steel with a small splash of reddish chocolate at R1 in AMERICA. Strong date and clear legends. Looks nicer than it may sound.

The 2010 EAC Convention Sale, April 24, 2010

93. **1825 C-1 R3 VF25. Rotated Reverse.** Glossy light chocolate and medium brown. Very attractive for the grade, only microscopic ticks from flawless. MDS, Manley state 2.0. The reverse is rotated 155 degrees CW.

94. **1825 C-1 R3 VF25. Rotated Reverse. Misaligned Dies.** Very attractive glossy chocolate brown. A dull nick under the bust tip and a couple light vertical nicks off the chin are the only notable defects. MDS, Manley state 2.0, with the reverse rotated 120 degrees CW. In addition, the obverse die is misaligned to K-1.

95. **1825 C-2 R1 F12.** Slightly sharper with a rim bruise under the date. Lightly cleaned and retoned chocolate and steel with frosty lighter steel brown in protected areas. LDS, Manley state 2.0.



96. **1825 C-2 R1 VG10. Counterstamped. Brunk R-80.** Glossy chocolate brown. Counterstamped down the portrait with "W D RAPP" with raised letters inside an incuse rectangle. The stamp is strong and evenly impressed. Rapp was a watch maker and jeweler located in Philadelphia and Norristown, Pennsylvania, and Brunk says he issued these in 1835.



97. **1826 C-1 R1 EF45.** Sharpness near AU50 but there is a very faint scuff on the cheek and in the field off the chin, plus a dull contact mark near the dentils above the back of the head. Frosty medium brown with chocolate toning on the highpoints. M-LDS, Manley state 4.0 late.



98. **1826 C-1 R1 EF40.** Attractive glossy chocolate brown. A few trivial ticks from choice. M-LDS, Manley state 4.0. The fields are reflective thanks to a fresh die lapping.

99. **1826 C-1 R1 VF30.** Glossy dark olive brown. Just a few trivial ticks, none notable. LDS, Manley state 5.0. Purchased from "Johnson" for 50 cents in the early 1940's.

100. **1826 C-1 R1 VF25+.** Sharpness VF35 with a small dig at the bottom edge of the bust above the 2 and traces of verdigris at STA. Mostly glossy chocolate brown mixed with olive and reddish chocolate. M-LDS, Manley state 4.0.



101. **1826 C-2 R3+ EF40+.** Frosty dark olive and steel with lighter brown toning faded down from mint color in protected areas, especially on the reverse. Sharp and attractive, close to EF45. E-MDS, Manley state 2.0. The repunching on the 6 is sharp.

102. **Trio of Half Cents.** Includes 1804 C-8 (Spiked Chin) E-MDS (3.0) VG8, 1826 C-1 M-LDS (4.0) VF30, and 1828 C-1 LDS (3.0) VF20. All are slightly sharper with defects. Lot of 3 coins.



103. **1828 C-1 R1 MS60.** Lustrous light steel and medium brown with darker steel toning on the highpoints. A couple tiny ticks on the bust tip and some light reddish steel toning nestled on the wreath ribbon are the notable marks. MDS, Manley state 2.0.



104. **1828 C-1 R1 VF35. Clipped Planchet.** Frosty chocolate brown with traces of reddish chocolate and lighter brown. Only trivial ticks. E-MDS, Manley state 2.0. The planchet is clipped at K-2 just missing stars 8 & 9 and ER in AMERICA. Rarely seen with such an obvious clip.



105. 1828 C-2 R1 ICG graded AU58. 12-Star Obverse. Frosty bluish steel brown. Possibly dipped and retoned, but the surfaces are covered with satiny mint frost and offer nice eye appeal. The only defects are a couple dull contact marks above HAL. MDS, Manley state 2.0. Our grade is AU50.



106. 1828 C-2 R1 VG8. 12-Star Obverse. Counterstamped. Glossy chocolate brown and steel. No defects other than a counterstamp on the portrait containing a fancy script version of "WL" using raised letters inside a reectangular oval that is bordered by a reeding-type design. No Brunk reference for this one, but it is old.

107. 1828 C-3 R1 VF30. Ten points sharper but there is a short scratch over AL in HALF. Lightly cleaned and retoned frosty chocolate and light steel brown with wisps of darker reddish ehocolate toning on both sides. MDS, Manley state 3.0 late.

108. Trio of Half Cents. Includes 1828 C-3 F15 net F12, 1834 C-1 VF30 net F15, and 1835 C-1 VF20 net VG8. Items netted for imperfect surfaees. Lot of 3 coins.



109. 1829 C-1 R1 MS60. Lustrous ehocolate and steel with darker steel brown toning on the left side of the obverse. Generous traees of faded mint color bleed through on the obverse and attractive light bluish steel toning shows in protected areas on the reverse. MDS, Manley state 2.0.



110. 1832 C-1 R2 AU50. Very close to mint state but there is a small rim bruise at ME. Dipped and retoned frosty light olive and steel brown. EDS, the reverse uneracked.



111. 1832 C-2 R2 EF45. Glossy light ehocolate and steel brown with frosty luster covering the protected areas. No defects, only very light wear on the highpoints. LDS, Manley state 3.0.

112. Pair of Half Cents. Includes 1833 C-1 EDS (1.0) VF20, and 1834 C-1 EDS (1.0) VF30. Both are sharper with defects. Lot of 2 coins.



113. 1834 C-1 R1 MS63. Lustrous chocolate and bluish steel with 10% of the original mint color remaining. The surfaees are satiny and the only mark is a tiny, very shallow low spot in the field under the ehin (caused by debris on the die or a pre-striking planchet flake). EDS, Manley state 1.0. Ex Bebee Stamp & Coin-Tom Reynolds 4/3/92.



114. 1834 C-1 R1 AU55. Very close to mint state but there are some tiny rim nicks, including a dull one under the bust tip. Frosty bluish steel and light olive brown. MDS. Manley state 2.0.

115. 1835 C-1 R1 VF30. Glossy dark olive and steel. Smooth, virtually flawless, but darkly toned. MDS, Manley state 1.0. This one came from "Johnson" for only 30 cents in the early 40's.

116. 1835 C-2 R1 VF30. Five points sharper with a few too many tiny nicks scattered over the obverse for the sharpness grade. None of the nicks is significant and the eye appeal remains decent for the grade. Glossy chocolate and olive with lighter brown in protected areas. LDS, Manley state 3.0.



117. 1837 Half Cent Hard Times Token Low-49 Rulau HT-73 R2 EF45+. Clipped Planchet. Frosty steel brown and light olive. No defects, but the color may not be original. A minor planchet clip affects the dentils over ARD in STANDARD and UR in PURE. Can't recall seeing another of these with a mint error.

118. 1837 Half Cent Hard Times Token Low-49 Rulau HT-73 R2 VF25. Sharpness AU50 and choice except for several fine scratches and pinpricks on the upper half of the eagle side. Attractive glossy chocolate brown with satiny mint luster covering the fields.



119. 1849 C-1 R2- VF35. Clipped Planchet. Close to EF40 with too many tiny nicks for the higher grade, none notable. Nice glossy medium brown with chocolate and steel toning on the highpoints. A minor planchet clip affects the dentils under the date and over ES in STATES.

120. 1850 C-1 R2- ICG graded AU55. Double Profile. Frosty light olive and chocolate. Just a few light contact marks, including a thin, log nick in the field off the chin. EDS. The obverse is finely double struck (die chatter) leaving sharp doubling on the date, stars, and parts of the profile. A shallow low spot (from crud on the die) shows at the dentil tips around much of the reverse. Our grade is EF40.



121. 1851 C-1 R1 NGC graded MS63 Brown. Lustrous light chocolate and steel brown. No defects. The fields are satiny and the eye appeal is excellent, but there is a trace of rub on the highest points of the design. E-MDS. Our grade is AU58+, very close to MS60.

122. Pair of Half Cents. Includes 1851 C-1 AU50 net EF40 and 1854 C-1 AU50 net EF40. Both netted for recoloring. Lot of 2 coins.

123. 1853 C-1 R1 EF45. Ten points sharper but there are several tiny nicks on the cheek plus a very light rim bruise under the 1. Glossy light chocolate brown with frosty luster covering the fields and traces of faded mint color on the reverse. M-LDS with a hint of waviness in the obverse fields.

124. Trio of Half Cents. Includes 1853 C-1 AU50 net VF35 for cleaning, 1855 C-1 AU55 net EF45 for a short scratch at star 2, and 1856 C-1 AU55 net EF45 for some light scratches and rim nicks. Lot of 3 coins.



125. 1855 C-1 R1 MS64. Lustrous mint red fading to bluish steel brown, nearly half the red remaining. No defects. Excellent eye appeal, a choice original mint state half cent. MDS. Removed from a PCGS slab graded MS64RB (label included).



126. 1855 C-1 R1 MS62. Lustrous steel brown and light chocolate with a third of the mint color remaining on the obverse. A spot of reddish chocolate toning at the upper right point of star 1 is the best identifying mark. E-MDS.

Rare Judd-177 Breen 1-B



128. 1857 C-1 R2 AU55. Mint state but lightly cleaned and retoned chocolate and olive brown with faded red (that appears natural) in protected areas. No spots or stains, only a single tick on the jawline. MDS.



129. 1857 C-1 R2 ICG graded MS61 Brown. Frosty medium brown and light steel. No defects, but a bit dull from natural oxidation that could be brushed away quite easily (minus the plastic, of course). MDS. Our grade is AU55.



130. 1857 C-1 R2 EF40. Slightly sharper but there is a small swipe of very shallow verdigris in the field right of star 3. Frosty light chocolate and steel brown, possibly retoned but the color is attractive. MDS.

127. 1856 Judd-177 Breen 1-B R4 (or R7) Proof-60. Golden tan and steel brown. The fields are smooth and reflective on both sides. The only marks are a small spot of darker toning under the 5, a tiny planchet lamination on the rim at star 13, and a very small void on the rim at the C in AMERICA. The color of the planchet suggests this is one of the 90:10 planchets (90% copper, 10% nickel) described by Breen on page 456 in his half cent encyclopedia, which would make this piece extremely rare. It certainly has a different look and the color matches Breen's description. Weight 84.4 grains.

LARGE CENTS



131. 1793 S-1 R4 G4. Chain AMERI. Glossy dark olive and steel brown. The surfaces are nice but not perfectly smooth as a strong glass reveals extremely faint roughness under the toning. The only mark of any significance is a rim bruise just left of the date. The legends, including AMERI., are complete and easily readable while not strong, but the date is faint (although you can make it out with some effort and a touch of imagination). Not at all bad for a low grade Chain AMERI.

134. 1793 S-8 "Smith Counterfeit" F15. Wreath Cent. This cent began life as a normal 1793 Sheldon-8 Wreath Cent, but after extensive circulation it was transformed with exceptional skill into what we today call a "Smith Counterfeit." In reality the pieces we call "Smith Counterfeits" are not counterfeits at all but rather altered examples of genuine mint-struck large cents. Using the original design as a guide, Mr. Smith of Ann Street strengthened and almost imperceptibly modified the designs on heavily worn 1793 and 1794 large cents to create these fascinating pieces to help collectors fill the difficult 1793 hole in their collections. He performed this work in the 1860's when low grade examples of 1793 and 1794 cents were relatively plentiful and worth only a few cents to collectors. Most of the "Smith Counterfeits" we see today were made using 1794 cents as a host, the piece offered here being one of the rare exceptions. They remain highly coveted today, and the American Numismatic Society (ANS) has a remarkable collection of them (13 according to the most-recent count). The example offered here is one of the really nice ones in terms of artistry and eye appeal. The surfaces are smooth and void of any notable defects. Glossy dark bluish steel and olive. Some of the Vine and Bars edge device from the host 1793 Wreath Cent remains visible.



132. 1793 S-1 Electrotpe Copy EF45. Chain AMERI. Choice glossy chocolate brown with a couple peeps of steel gray on the highpoints from the underlying base metal. Portions of a Vine & Bars edge device have been added, but most of the edge is plain. Great detail, essentially new.

133. 1793 S-1 Gallery Mint Copy MS65. Lustrous mint red. "COPY" stamped on the reverse.



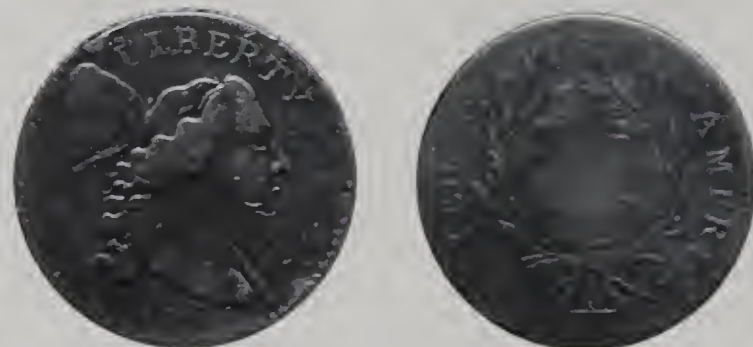
135. 1793 S-11b R4 VF20 but Plugged. Lettered Edge with 2 Leaves following DOLLAR. Attractive glossy chocolate and light olive brown. Smooth and nearly flawless except for an obvious plugged hole at IB in LIBERTY and the fraction. The IB has been reengraved nicely and the obverse offers excellent eye appeal, but the fraction was neglected completely and is gone. This one really needs a professional coin doctor to finish the job. MDS, Breen state II.



137. 1794 S-22 R1 G5. Sharpness VG10, at least on the obverse, but the surfaces are a bit uneven and there are rim dents from K-6.5 to K-9 on the obverse and at STA on the reverse. The date is weak but complete and easily readable, and the legends are complete as well. M-LDS showing mounds at the top of the wreath.



136. 1794 S-18b R4 VF25. Head of 1793. Incomplete Planchet. The obverse is glossy chocolate and olive brown while the reverse is dark greenish olive brown. The surfaces are smooth and offer excellent eye appeal in spite of the possible recoloring, but the planchet is incomplete along the right edge of the obverse and on the opposing area at AMERICA. This is a mint-made flaw in the planchet, but it effects the eye appeal of an otherwise outstanding Head of 1793 cent. I suppose the planchet was cut from very near the end of the planchet strip where it was beveled. MDS, Breen state III. There is no trace of bulging under the cap but the ribbon right of the fraction is fragmented. Called VF25 in the Bland census. Noyes says VF25 net VF20, his photo #34841. Ex Pete Boisvert-Dr. Bob Shalowitz-Pete Boisvert, Bowers & Merena 9/89:42-Jim McGuigan and Don Valenziano-Chris McCawley 12/16/89-R. S. Brown, Jr., Superior 1/27/96:25-Walter Husak.



138. 1794 S-24 R1 VG8. Sharpness F12 with light to moderate roughness covering the fields, a rim dent at the top of the cap, and a few small nicks on the jawline. No verdigris or additional defects, and the color is an attractive glossy chocolate brown. Later die state with obvious swelling in the center of the reverse that obliterates most of ONE CENT.

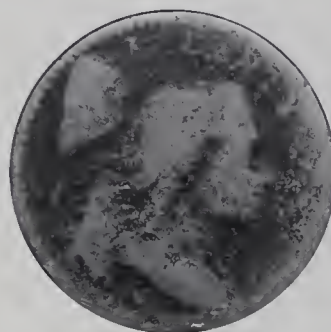
139. 1794 S-24 R1 G4. The obverse is slightly better while the reverse is a bit weaker. Glossy chocolate and olive brown. The surfaces are decent but there is microscopic roughness on the obverse, mostly in protected areas. The date is easily readable but not strong, and the legends are readable except for parts of ONE CENT, which are worn smooth thanks to heavy swelling inside the wreath. The only marks are a couple minor rim bruises on each side, the strongest of these over TE in UNITED. Purchased from "Hesslein" on 1/13/28 for 75 or 76 cents. LDS.

140. 1794 S-32 R2 G4. The obverse is slightly better, the reverse a bit weaker. Strong date and no corrosion. A rim dent at D in UNITED is the only notable defect. Glossy steel brown and chocolate. M-LDS. Breen state IV. The crack through the first S in STATES is strong and swelling obliterates most of ONE CENT. The reverse is rotated 30 degrees CCW.

141. 1794 S-32 R2 Basal State-1. Rotated Reverse. Barely attributable with no date and only a few details remaining. The die crack through the first S in STATES is weak but visible. This one is special because of the reverse is rotated 80 degrees CCW, the first seen so severely rotated by your cataloger.



142. 1794 S-35 R5 VG8. Rotated Reverse. Sharpness F12 but the surfaces are lightly corroded, mostly in the fields. No verdigris or notable marks. Recolored dark steel brown and olive with chocolate brown toning on the highpoints. The date and legends are complete and easily readable. M-LDS, Breen state VI, with the reverse rotated 35 degrees CW.



145. 1794 S-39 R6 Fair-2+. The obverse is slightly weaker while the reverse is a bit stronger. Both sides suffer a bit from fine roughness, strongest at ERICA. No verdigris or notable marks. The date is gone but at least two-thirds of the legends remain readable. Dark olive brown and chocolate with lighter brown toning on the devices. The toning contrast accents the devices and legends making them easier to see, which is helpful on such a worn cent.



143. 1794 S-36 R5 AG3. A few points sharper but there is a grouping of dull, deep dents in the hair left of the cheek, and these were strong enough to cause an obvious bulge that obliterates CE in CENT. Otherwise the surfaces are smooth and the color is an attractive glossy chocolate brown. The bottom edge of the date is fading into the rim but the remainder is clear and the legends are easily readable (except for CE and RTY).



146. 1794 S-41 R3 VG8. Sharpness VF20 but the surfaces are a bit uneven and there are patches of corrosion at the date and top of the head. No verdigris. A rim bruise under the 7 is the only notable contact mark. Recolored a mostly glossy chocolate and olive brown mixed with darker steel in a couple places. The 4 is weakened by corrosion but the rest of the date is clear and the legends are strong. M-LDS, Breen state VI.



144. 1794 S-38 R5 VG8. Attractive glossy chocolate and steel brown. Smooth surfaces with nicely balanced details throughout. The only notable marks are a rim nick at the second T in STATES and a rim dent at the second A in AMERICA. Very nice for the grade. LDS, Breen state I. The lump in the field below the cap is weak from die wear and lapping.



147. 1794 S-44 R1 AG3. The obverse is very slightly sharper while the reverse is a bit weaker. Both sides have fine roughness in the fields and protected areas. No verdigris, and the only contact mark is a dull, faint scrape under the T in UNITED. Slightly glossy steel brown and chocolate with olive in protected areas. The date is complete and easily readable but weak and most of the legends can be made out.



148. 1794 S-47 R4 F12. Sharpness VF25 with fine to moderate granularity covering the planchet. Slightly glossy dark olive and steel. No verdigris and only a couple light contact marks, including a rim bruise at the L in LIBERTY and another slightly stronger one at D-S. MDS, Breen state II.

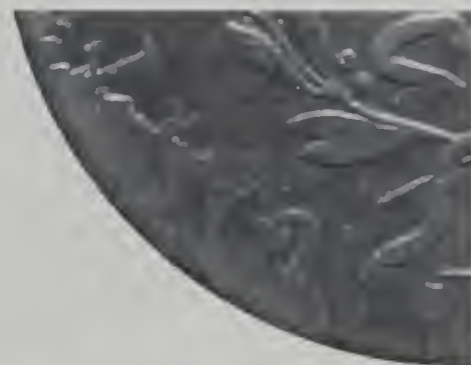
149. 1794 S-49 R2 AG3. Glossy chocolate and olive brown. Decent surfaces, but there is a rim bump at the top of the reverse and a scratch at CA in AMERICA. The date is weak but can be made out and about half the legends remain readable. M-LDS. The die crack down through the E in LIBERTY is strong. Ex John Keyes 4/25/03-Terry Denman.



150. 1794 S-50 R5 AG3. A couple points sharper but dark and the fields are covered with moderate granularity. No verdigris or contact marks. Slightly glossy very dark olive and steel. The date is complete and easily readable but not strong and the legends are complete except for weakness on the upper half of AMERICA. MDS, Breen state II.



151. 1794 S-51 R5- G6+. Slightly sharper but there is a vertical scratch on the cheek near the ear and about a half dozen small rim dents, strongest at the bottom of the reverse, plus a scuff at NI in UNITED. Glossy light chocolate brown with smooth, attractive surfaces. The date is clear and the legends are complete except for weakness at OF AME. EDS, Breen state I.



152. 1794 S-58 R3 F15. Sharpness VF35 but covered with uniform fine roughness that's mostly hidden under a glossy dark olive and chocolate patina. No marks, just a few tiny specks of greenish verdigris visible only with the aid of a glass. Nicely struck with well balanced details. Looks better than it sounds. I have seen worse coins in EF slabs. LDS, Breen state IV, with a raised retained cud break at UNIT.



153. 1794 S-59 R3 VG8. A couple points sharper with faint granularity covering the fields on both sides and a dull rim nick at the U in UNITED. Otherwise this cent offers excellent eye appeal for the grade. Glossy steel brown and light olive with chocolate toning in protected areas. The date is strong and the legends are complete. EDS, Breen state I.

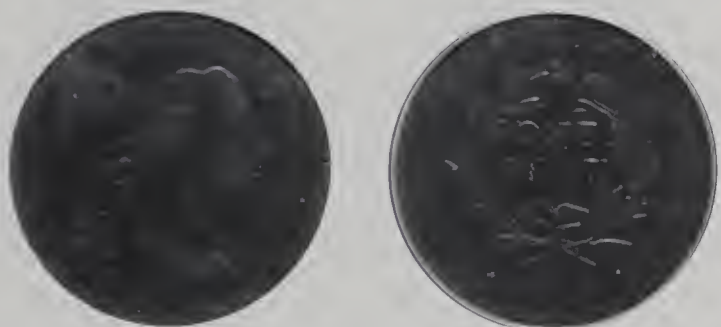
154. 1794 S-59 R3 Basal State-1. Counterstamped. Beat up, but the date is easily readable, as is much of the legend outside the wreath. Glossy dark olive and steel. The reverse is counterstamped with a large saw tooth rectangle with "WA" in large, raised letters inside. Appears to be a very old stamp. Not in Brunk.



155. 1794 S-61 R4 ANACS graded VG8. Mostly glossy light to medium chocolate brown with darker chocolate toning in the protected areas. A splash of reddish chocolate toning on the 4 and bust is the only notable mark. The date and legends are complete and easily readable in spite of a few weak areas on the reverse. MDS, Breen state III. Our grade is VG7. The attribution is noted on the ANACS label. Ex Tom Reynolds.



158. 1794 S-64 R5- VG10. Missing Fraction Bar. Sharpness VF20 but lightly corroded, strongest on the reverse. No verdigris and the only notable mark is a minor rim bruise at S-O. Mostly glossy chocolate and olive brown. The date and legends are complete and clear except for the denominator, which is faint at best. LDS, Breen state V. The die crack through D is strong.



156. 1794 S-62 R4+ ANACS graded F12. Slightly glossy dark steel brown and chocolate. The surfaces are decent but a glass reveals extremely faint roughness under the natural toning. No verdigris, and the only notable mark is a tiny rim nick over the E in LIBERTY. The date and legends are complete and easily readable but not strong. Rare EDS, Breen state I, before the retained cud break on the left edge of the obverse. Our grade is VG10. The attribution is noted on the ANACS label. Ex Tom Reynolds (as F15 net F12, envelope included).



157. 1794 S-62 R4+ G5. Several points sharper but there is a rim dent at the R in LIBERTY, another at the top of the cap, a dull dent in the hair left of the neck, and an attempted puncture at the upper junction of the E & N in CENT. Otherwise the surfaces are smooth and attractive offering excellent cyc appeal. Glossy chocolate brown. Clear date and legends. LDS, Breen state II, with the usual cud break on the left side of the obverse.

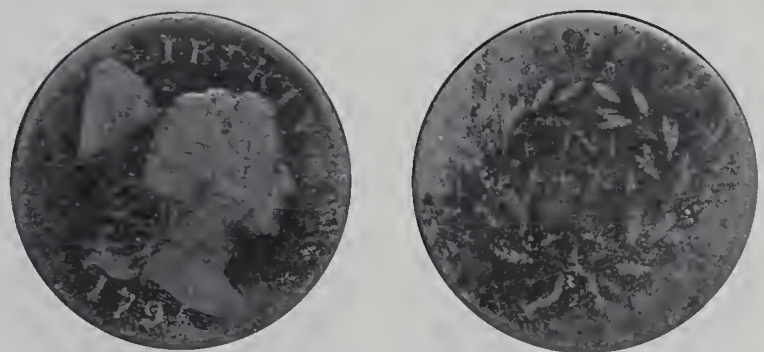
159. 1794 S-70 R2 VF25. Sharper by nearly 10 points but there are some light contact marks on both sides, mostly in the form of very light rim bruises. None of these rim disturbances is at all significant, but there are just too many to ignore. Otherwise just a few trivial marks, including a small chip in the field off the lower lip, another under LI, and a short scratch between the first T & A in STATES. Glossy chocolate and steel with a small splash of reddish chocolate toning in the hair left of the forehead. E-MDS, Breen state II.



160. 1794 S-70 R2 VG10. Sharpness near VF20 but tiny planchet chip voids (all mint made) show on both sides, especially on the reverse where they certainly catch your eye. No corrosion, verdigris, or contact marks. Recolored glossy dark steel brown and olive with lighter brown in protected areas. The date and legends are all strong. M-LDS.



163. 1795 S-76b R1 VG7. Plain Edge. Sharpness F15, perhaps even better in the hair details, but covered with microscopic porosity. No verdigris, but there is a strong rim dent under the date and a lighter one above BE in LIBERTY. Slightly glossy chocolate brown with splashes of darker chocolate toning on the reverse. The date and legends are complete and easily readable. MDS.



161. 1795 S-76a R5 AG3. Lettered Edge. The obverse is slightly better, the reverse a bit weaker. The surfaces are not perfect showing areas of minor roughness on both sides, but there is no verdigris and the marks are insignificant. Rather glossy olive brown with lighter chocolate toning covering the devices. The date is complete and easily readable but not strong. Perhaps half the legends remain visible but the edge lettering is complete. Weight 198.9 grains.



164. 1795 S-77 R3 VG10. Plain Edge. Clipped Planchet. Sharpness VF25 but covered with uniform fine to moderate granularity. No marks or verdigris. Slightly glossy dark olive and chocolate. The date and legends are complete and easily readable. E-MDS. A curved planchet clip affects the dentils just right of the date and at S-OF.

165. Pair of Early Cents. Includes 1795 S-77 Plain Edge Fair-2+ and 1797 S-138 Basal State-1. Both have a readable date. Lot of 2 coins.



162. 1795 S-76b R1 F12. Plain Edge. Sharpness near VF25 but there fine granularity covers the fields and protected areas while the devices are relatively (but not perfectly) smooth. No marks or verdigris. Recolored a rather glossy dark steel and olive with lighter steel and chocolate toning on the devices. The date and legends are complete and clear. MDS.



166. 1795 S-78 R1 F15. Plain Edge. Sharpness EF40 but covered with uniform fine corrosion. No verdigris, and the only marks are a faint vertical scuff under EN in CENT and a couple fine scratches at AM, all blending perfectly into the natural patina. Slightly glossy dark olive and steel. The date and legends are strong. Excellent detail, but not especially attractive. MDS.

Heavy Planchet 1795 S-78



167. 1795 S-78 R1 VF30. Plain Edge. Heavy Planchet. Ten points sharper with a rim bruise at the lower end of the cap plus a couple more minor ones elsewhere on both sides. A faint scratch-like planchet void is located in the field before the nose with an even weaker extension on the top of the cap, and a more obvious planchet void is located in the leaves over ON in ONE. Mostly glossy chocolate and steel with frost in protected areas, especially on the reverse. E-MDS, Breen state II. Struck on a thick, overweight planchet weighing 183.0 grains (versus the standard of 168 grains for plain edge planchets and 208 grains for the lettered type).



168. 1796 S-87 R3 F12. Liberty Cap. Sharpness VF20 but the fields and protected areas are covered with microscopic roughness while the devices are relatively smooth. No verdigris, only traces of crud in some of the protected areas. Just a few marks, including a tiny dig on the bust and some nicks at the E's in ONE CENT. The usual swelling at the 6 weakens that numeral a bit but it remains easily readable while the remainder of the date is strong and the legends are clear.



169. 1796 S-88 R4 G5. Liberty Cap. Very slightly sharper but dark with extremely faint roughness under the toning. No verdigris, and the only notable marks are a shallow pitmark right of the Y in LIBERTY and a few small rim nicks on both sides. Slightly glossy dark olive and steel. The date and legends are complete and easily readable, although the obverse is sharper than the reverse.

170. 1796 S-89 R3 Fair-2+. Liberty Cap. Dark olive with lighter reddish brown devices thanks to a light cleaning. The date is weak but easily readable and most of the legends remain readable as well.



171. 1796 S-90 R5+ Fair-2+. Liberty Cap. Upset Reverse. The obverse is slightly better, the reverse weaker. Slightly glossy steel and light olive brown. No notable defects, just well worn. The date is weak but easily readable but less than half the reverse remains visible.



172. 1796 S-92 R3 G4+. **Draped Bust.** A couple points sharper but there are myriad fine scratches on the portrait plus a tiny dig in the field above the hair ribbon. Mostly glossy olive brown and chocolate with a splash of reddish chocolate before the face. The date and legends are easily readable. Ex Ronnie Adam, McCawley & Grellman Auctions/Superior 9/5/04:251.



176. 1796 S-99 R5 VG10. **Draped Bust.** Sharpness F15 but there are small pits scattered over both sides, most notably on the rim over IBE, on the reverse at F-AME, and just right of the fraction. The remainder of the planchet is decent but a glass reveals uniform extremely faint granularity. No verdigris or contact marks of any significance. Slightly glossy olive and dark steel. The date and legends are complete and strong. EDS, Breen state I, before the obverse die cracked. Comparable to Holmes lots 167 & 168 but in an earlier die state. Called F15 net VG10 and tied for CC#8 in the Bland census. Noyes says F15 net VG7, but he has not photographed this coin. Ex Hollinbeck Kagin Coin Co.-Leonard W. Stark (Central Coin Mart)-Hollinbeck Kagin Coin Co. MBS #261, 12/1965:736-Major Richard Henry 4/14/67-Philip Van Cleave, Kagin's 1/30/86:6105.



173. 1796 S-96 R6 ANACS graded Fair-2 Details. **Draped Bust.** Rather glossy chocolate brown. No corrosion, but there are numerous nicks on both sides and the ANACS label says the planchet is "BENT," which appears to be relatively minor. The date is nearly complete and remains easily readable in spite of the heavy wear, and there is enough detail on both sides to enable a positive attribution (the leaf pair right of the E in ONE is an easy one for S-96). EDS, Breen state I, before the bisecting die crack across the reverse. Not a gem, but this one could fill that really tough hole in many collections. Our grade is Fair-2. The attribution is noted on the ANACS label.



177. 1796 S-100 R5 VG10. **Draped Bust.** Sharpness near VF35 but covered with uniform fine to moderate granularity. No marks or verdigris. Dark olive and steel brown. The date and legends are complete and clear. EDS, Breen state I.

174. 1796 S-97 R3 G5. **Draped Bust.** Sharpness VF25 but damaged at the rims on both sides, strongest under the fraction. The date and legends are strong except for LIBERTY, which is partially obscured by dull dents. Dark olive and steel with chocolate brown toning on the highpoints. Great detail, but the damage makes net grading a challenge. G5 seems low, but this cent will always come with an apology. MDS.

178. 1796 S-102 R4 VG7. **Draped Bust.** Sharpness VF25 but covered with moderate corrosion everywhere except on the right side of the obverse. No contact marks or other defects. Slightly glossy dark olive and steel. The date and legends are complete and easily readable. Ugly with decent detail. LDS, Breen state II.

175. 1797 S-97 R3 AG3+. **Draped Bust.** Glossy chocolate brown. No defects, just well worn. The date is clear and rather strong for the grade, and the vast majority of the legends are readable without much effort. Very nice for the grade, close to G4.

179. 1796 S-103 R4+ AG3. **Draped Bust. LIBERTY Obverse.** A few points sharper but moderately rough and the obverse is covered with myriad fine scratches. Dark chocolate and olive brown. No marks or verdigris. The date and legends are complete and easily readable. The strongest part of the legend is LIBERTY, which is a bonus on an otherwise unremarkable example of this tough and popular variety.

The 2010 EAC Convention Sale, April 24, 2010

180. 1796 S-112 R4+ ANACS graded VF20 details, **corroded & scratched. Draped Bust.** Sharpness near VF20 but the obverse is covered with light to moderate corrosion that has been lightly smoothed. The reverse is relatively smooth except for the area at STATES, and there is a bit of greenish verdigris at the dentils right of the fraction. A few fine scratches are hidden in the toning, mostly on the obverse. Not a beauty, but the date and legends are strong except for weakness from corrosion at STATES. Dark olive and steel offering a bit of gloss. EDS. Our grade is net G6.



181. 1796 S-115 R3 NGC graded EF Details, **Improperly Cleaned. Draped Bust.** Sharpness VF25 but lightly cleaned and nicely retoned glossy light chocolate brown. No corrosion or verdigris, only minor contact marks. The notable ones are a rim nick at the Y in LIBERTY and a dull nick in the leaves under the O in OF. MDS, Breen state V. The die crack arcing through the date is strong but there are no die cracks at TY. The die is starting to bulge above the shoulder causing weakness in the hair details in that area and the opposing details in the leaves under ES in STATES. The reverse is rotated 30 degrees CCW relative to a normal head-to-foot die orientation. Our grade is net VF20. Called VF20 net F15 and tied for CC#8 in the Noyes census, his photo #59126 (4 of the better ones in his census are in the ANS collection and thus out of play).

182. 1796 S-115 R3 AG3. **Draped Bust.** Slightly sharper with several rim bruises on both sides, mostly on the reverse. Glossy dark olive and steel. The date is easily readable and the legends are complete. EDS, before any obvious die cracks on the obverse.



183. 1796 S-119 R3 G6. **Draped Bust.** Sharpness VG10 or better but dull and covered with fine granularity. No verdigris, and a tiny rim nick at the F in OF is the only mark. Dark steel and olive. The date and legends are complete and clear. M-LDS, Breen state III. Obviously not from the Nichols Hoard, which makes it rare.



184. 1797 S-120b R2 VG10+. **Reverse of 1796 Grippled Edge.** Sharpness F15 or slightly better but there is a patch of fine corrosion left of the O in ONE and another from NT in CENT to ME in AMERICA. The remainder of the planchet is decent if not perfect in a few areas, and there are only a couple minor contact marks. Glossy chocolate and olive brown with hints of reddish chocolate brown on both sides. LDS, Breen state VI. The gripped edge feature is strong.



185. 1797 S-124 R5+ G4. Very slightly sharper but the surfaces, while decent enough for the grade, are not perfectly smooth. No verdigris, and the only marks of any consequence is a tiny rim bruise under the 9 and a small pit in the center of the reverse. The date and legends are complete and readable. Slightly glossy olive brown and steel. E-MDS, Breen state III.



186. 1797 S-125 R5 VG10. Sharpness VF25 but there are a few patches of very light roughness on the obverse and the reverse is mostly covered with similar roughness. Traces of very shallow verdigris can be found in a few places, but it is not distracting. The notable marks are a pit in the dentils just left of the date, a light rim bruise at the L in LIBERTY, and a couple more very light rim bruises on the reverse. Mostly glossy chocolate with splashes of darker olive brown on the obverse. LDS, Breen state III, with heavy swelling that obliterates the bust tip and most of the second 7 in the date. The remainder of the date and all of the legends are strong. Called VF20 net VG10 and tied for CC#11 in the Bland census. Noyes says VF25 net VG8 and tied for CC#15, his photo #36834. Ex Worthy Coin Co. 5/83-Dr. Philip W. Ralls-Jack Robinson, Superior 1/29/89:239-J. R. Frankenfield, McCawley & Grellman Auctions/Superior 2/17/01:354-Terry Denman.

187. 1797 S-128 R3 AG3. M over E variety. Glossy chocolate brown. Smooth surfaces, just well worn. The date is easily readable and more than half the legends are clear, including the M over E error in AMERICA. E-MDS.

188. 1797 S-128 R3 F15 but Counterstamped. M over E variety. Lightly cleaned, now a slightly glossy light steel brown with light olive toning in the protected areas. No roughness or significant marks except for "17" punched into the left obverse field and "97" into the right obverse field. Why? The date is strong already. Too bad because this would have been a nice example of the variety. LDS, Breen state IX. The obverse die cracks are strong and the M over E error is bold.



189. 1797 S-129 R5 G5. M over E variety. Slightly sharper but there is uniform very fine roughness under a mostly glossy dark olive and steel patina. The highpoints are a lighter shade of chocolate brown. No marks or verdigris. The date is clear and the legends are complete. EDS. The M over E error is visible but not strong. Called VG7 net G5 and tied for CC#20 in the Noyes census, his photo #39573. Ex Louisville Coin Exchange 6/94-March Wells, 2001 EAC Sale, McCawley & Grellman Auctions 3/31/01:206.

190. 1797 S-131 R2 G4. Stemless Wreath. Glossy chocolate and olive brown, the devices a couple shades lighter than the fields. No corrosion but many nicks plus a rim dent at TE in STATES. The 179 are weak (from minor die swelling in that area) but readable while the second 7 is clear and the legends are complete. MDS.



191. 1797 S-131 R2 G4+. Stemless Wreath. The obverse is slightly better while the reverse is a bit weaker. No roughness. A pit or punchmark in the field off the tip of the nose is the only defect. Rather glossy chocolate brown. The date and legends are easily readable except for weakness at TATE and the fraction. Extremely rare terminal die state, Breen state V, with a raised cud break covering the area right of the vertical crack reaching from just off the bust tip to right of the Y. Ex Tom Reynolds 4/6/01-Terry Denman.

192. 1797 S-133 R5 G5. Stemless Wreath. Very slightly sharper but there is a thin but sharp horizontal pinscratch across the middle of the obverse plus a couple more faint hairline scratches on the reverse. No roughness or verdigris. Glossy chocolate and steel brown. The date and legends are complete and easily readable except for minor weakness on UNITED. LDS, Breen state V, with a die crack from the rim to the neck close above the bust.

Nice Circulated Grade 1797 S-135

1797 S-136 Ex Blaisdell-Naftzger



193. 1797 S-135 R3 VF30. Sharpness EF45 but covered with extremely light roughness under a glossy dark chocolate and olive patina. No marks or verdigris, and there is very little wear evident on this cent. Possibly an escapee from the Nichols Hoard that was improperly stored or lost in soil for a brief time. MDS, Breen state III.

194. 1797 S-135 R3 G6. Sharpness F15 or slightly better but covered with light to moderate corrosion. A trace of greenish verdigris is nestled into the lowest curl and black scale covers portions of both sides. Not the most attractive cent but the details are strong. A mix of chocolate, reddish brown, and dark olive (the scale). The date is bold and the legends are complete.

195. 1797 S-135 R3 G5. Nice glossy chocolate brown. A dull rim nick off the chin is the only mark of any significance. Smooth and attractive for a well worn cent. The date and legends are complete and easily readable.

196. 1797 S-136 R3 EF45+. Obverse plated in *Early American Cents and Penny Whimsy*. Ten points sharper with splashes of reddish chocolate toning on the reverse, and a couple of these splashes contain traces of extremely fine roughness. The obverse, however, is choice and offers excellent eye appeal. Glossy chocolate brown with frosty lighter steel brown toning in protected areas, but the reddish chocolate splashes covering most of the reverse are in stark contrast to the beautiful obverse. LDS, Breen state V, with reflective fields from a fresh die polishing. Called AU50 and CC#4 in the Bland census. Noyes says MS60 sharpness net VF30 and tied for CC#11, his photo #23336. The obverse of this cent is plated in EAC and PW. Comes with a partially beaded edge on the planchet. This feature is noted by Breen who mentions that he had seen only 2 examples with this feature. Comes with a long, distinguished provenance. Ex Henry C. Hines-Homer K. Downing, 1952 ANA Sale, New Netherlands Coin Co. #38, lot 1777-Willard C. Blaisdell-Gordon J. Wrubel-Jerry A. Bobbe 2/20/75-C. Douglas Smith-Dr. Bob Shalowitz 4/85-R. E. Naftzger, Jr., 12/11/86-Herman Halpern, Stack's 3/16/88:137-Dr. Bob Shalowitz 4/15/88-C. Douglas Smith-Dr. Bob Shalowitz-Walter Husak.



197. 1797 S-136 R3 VF30. Five points sharper but there is a nick on the throat and the hair ribbon was softly struck (caused by a clog in the die). Otherwise this cent is choice and offers outstanding eye appeal. Glossy light to medium chocolate brown with lighter steel brown toning in protected areas. LDS, Breen state V.

200. 1797 S-139 R1 EF45. Five points sharper but there are a few areas of extremely fine roughness under a glossy dark olive and chocolate brown patina. The roughness is confined to the fields and protected areas on the lower part of the obverse, around NI in UNITED, and just right of the denominator. This roughness is quite faint and very well hidden under the glossy patina, and the eye appeal of this cent remains excellent. M-LDS, Breen state IV, with swelling near the die cracks left of the lower curls. Called AU50 and tied for CC#6 in the Bland census. Noyes says AU50 and tied for CC#4 in his census. Both assessments seem a bit optimistic to this cataloger, but the superior eye appeal offered by this cent is undeniable. And it comes with a nice provenance. Ex Waldo C. Newcomer-B. Max Mehl-Dr. James O. Sloss 9/58-R. E. Naftzger, Jr., Abe Kosoff 10/59:37-Stack's-Dorothy Nelson (Tad sale), Stack's 2/76:37-Jesse Iskovitz-William T. Jones, Jr.



198. 1797 S-138 R1 G6. Glossy olive and steel brown. No notable defects. LDS, Breen state VII, with heavy swelling that obliterates portions of the legend and wreath on the upper part of the reverse. Strong date. Ex Doug Bird 7/31/02-Terry Denman.

199. 1797 S-138 R1 G5. Very slightly sharper with microscopic granularity in the fields and protected areas. No verdigris, only minor marks consistent with the grade, including a few fine scratches at the top of the wreath and a rim bruise at A in STATES. Mostly glossy chocolate brown. LDS with swelling that obliterates ES-OF.



201. 1797 S-140 R1 G5. Glossy dark chocolate and olive. A curved scratch or struck-through line between the I & B in LIBERTY is the only notable mark. Very late die state, later than Breen's latest state IX, with heavy swelling on both sides plus a strong die break slanting from the lowest curl to the rim at left. A modest cent but a neat die state. Ex 2005 EAC Sale, McCawley & Grellman Auctions 4/23/05:163-Mike latesta, McCawley & Grellman Auctions/Superior 9/05:300.



205. 1798 S-149 R4+ VG7. Style I Hair with Large 8. Sharpness near F12, but covered with microscopic roughness, strongest on the reverse. No marks and only a few inconspicuous specks of verdigris. Slightly glossy dark olive and chocolate. Sharply struck EDS, Breen state I. The date and legends are bold except for weakness on ONE CENT.



202. 1797 S-142 R5+ AG3+. Very slightly sharper but there are a half dozen fine scratches on the obverse and a dull rim nick at the top of the reverse. Otherwise the surfaces are smooth with only trivial marks. Glossy light chocolate brown with darker chocolate in protected areas. The date is weak but easily readable and the legends are clear except for STATES OF, which are faint. EDS, Breen state I.

206. 1798/7 S-151 R3 VG8. Overdate 8 over 7. Sharpness F15 but dark and covered with fine corrosion. No marks, but there are traces of very shallow greenish brown verdigris on both sides. Slightly glossy dark olive. The date and overdate are bold and the legends are clear.



207. 1798/7 S-152 R2 F15. Overdate 8 over 7. Sharpness VF25 but there are some light scratches on the obverse, the strongest one from the hair ribbon across the neck. Glossy chocolate and steel mottled with some darker olive brown. MDS, Breen state II. The date and overdate are bold and the legends are strong. Ex Homer K. Downing, 1952 ANA Sale, New Netherlands Coin Co., lot 1794 (comes with the lot ticket)-Bruno Crossfield.



203. 1798 S-147 R5- VG7. Style I Hair with Large 8. Slightly sharper with minor roughness in the fields and a few light rim bruises on both sides, including one under the 17. Glossy chocolate brown. The date and legends are complete and clear. MDS, Breen state I.

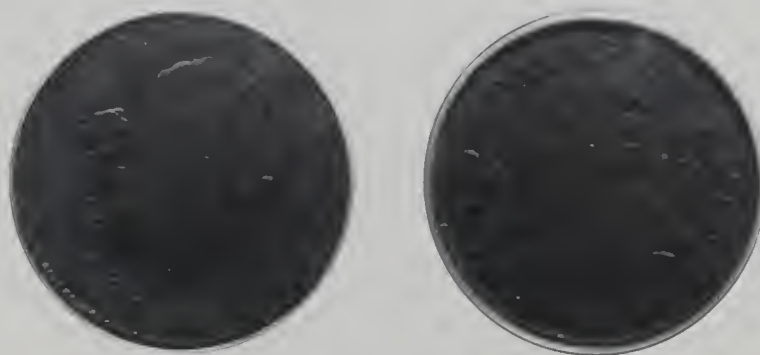


208. 1798 S-155 R3 PCGS graded F15. Style I Hair with Small 8. Reverse of 1796. Slightly glossy chocolate and dark steel brown. No significant marks or other defects, only light contact marks including a minor rim bruise at U in UNITED and a nick left of the O in OF. LDS, Breen state VI. Our grade is F12.

204. 1798 S-148 R2 VG10. Style I Hair with Large 8. Sharpness near VF30 with patches of light and moderate corrosion and pitting on both sides. Fine scratches cover much of the planchet. Mostly glossy chocolate and olive brown with some reddish chocolate at ED-STA. EDS, Breen state I.



209. 1798 S-155 R3 G5. Style I Hair with Small 8. Reverse of 1796. A few points sharper but rather dull and covered with fine roughness, strongest on the reverse where there is shallow verdigris covering the fields and protected areas. A scratch from the O in ONE to the ribbon bow blends with the patina but still catches your eye. Slightly glossy dark olive with chocolate highpoints. The date is bold and the legends are clear. Appears to be an early die state, which would account for the relatively strong ONE CENT.



212. 1798 S-159 R3 PCGS graded F15. Style I Hair with Small 8. Slightly glossy light olive mixed with darker olive brown and chocolate. Possibly recolored, especially on the obverse. No roughness or verdigris, but there are small nicks scattered over both sides, more than you like to see for the grade. The denominator did not strike up but everything else is complete and clear. MDS, Breen state IV. Our grade is F12 net VG10+.



210. 1798 S-157 R2 ANACS graded VF20 Details. Style I Hair with Small 8. Rather glossy chocolate and steel brown, the highpoints a few shades lighter than the fields. The surfaces are decent but not perfectly smooth, and there are a few specks of verdigris on the reverse, none notable. No contact marks, but the R in AMERICA did not strike up for some reason. The ANACS label says "Corroded," but the surfaces are not that bad, certainly better than many that get slabbed without the "corroded" stigma. MDS. Our grade is F15 net F12.



213. 1798 S-159 R3 F15. Style I Hair with Small 8. Five points sharper with extremely faint roughness under a slightly glossy olive and chocolate brown patina. No verdigris, but there are faint hairline scratches on the obverse, none visible without the aid of a glass. M-LDS, Breen state VI, and the reverse is rotated 35 degrees CCW. Comes with a nice provenance. Ex Henry C. Hines-Homer K. Downing, 1952 ANA Sale, New Netherlands Coin Co., lot #1806-C. Douglas Smith-Edward H. Schwartz, Abe Kosoff 10/11/61:182-unknown-Tom Reynolds 7/7/98-Terry Denman.



211. 1798 S-158 R4 VF20+. Style I Hair with Small 8. Close to VF25 but there are a few too many light contact marks for the higher grade, including a very light rim bruise at F-A. Nice glossy light chocolate brown with darker steel brown toning on the highpoints and traces of frosty lighter brown in protected areas on the reverse. MDS, Breen state IV. The obverse is misaligned to K-9.

214. 1798 S-163 R4 PCGS graded VG8. Style I Hair with Small 8. Rather glossy chocolate brown with lighter brown toning covering the devices leaving an attractive two-tone appearance that highlights the details. The only defect is some flat striking on the eye and nose. The date and legends are complete and clear. EDS, Breen state I. Our grade is VG7.

215. 1798 S-163 R4 VG8. Style I Hair with Small 8. Sharpness VF20 with patches of shallow corrosion and verdigris on both sides. Slightly glossy dark olive and steel with lighter steel brown devices. The date is bold and the legends are strong. M-LDS, Breen state VI, with a slightly sunken retained cud under the 17 extending to below the curl.



216. 1798 S-166 R1 VG7. Style II Hair with Large 8. Very slightly sharper with traces of microscopic roughness and verdigris on the reverse, strongest at ES of STATES where the roughness has weakened those letters. Partially glossy steel and chocolate with reddish chocolate toning in protected areas on the left side of the reverse. E-MDS, Breen state III. Struck very slightly off center to K-4 causing weakness at the bust and the opposing area at OF while the details on the left half of both sides is several points sharper.



218. 1798 S-166 R1 PCGS graded "Genuine". Style II Hair with Large 8. Sharpness EF40 and quite nice for that grade if not for several rim dents on both sides. The strongest of the rim dents is opposite the neck, but even this one is not too bad. Just a few additional marks, including a pinprick in the hair under the B, a dull nick in the field left of the ribbon, and a couple pinpricks at the A in STATES. Glossy chocolate and steel brown with some frosty luster showing through in the protected areas. M-LDS, Breen state V. Our grade is net VF20.



219. 1798 S-166 R1 VG10. Style II Hair with Large 8. Sharpness VF30 but there is tooling in the right obverse field and around most of the legend on the reverse, most likely done to remove verdigris or smooth away minor roughness. Regardless of the reason, the work was done with little if any real skill leaving obvious marks behind for us to enjoy, especially on the reverse. Glossy chocolate and olive brown, and the tool marks do not alter the attractive toning. Go figure. M-LDS.



217. 1798 S-166 R1 EF40. Style II Hair with Large 8. Glossy chocolate and steel with frosty luster showing in the protected areas. No roughness, only a few trivial contact marks. The only defect is a bit of blunt striking on the tip of the nose and front edge of the chin due to debris on the die in that area. MDS, Breen state IV. The reverse is rotated 35 degrees CCW.

220. 1798 S-168 R3 G6. Style II Hair with Small 8. Glossy chocolate and light steel brown with a swipe of darker olive at the rim left of the portrait. Nice for the grade, just worn. The date and legends are complete and easily readable, although the top of LIBERTY is flowing into the rim. LDS.



221. 1798 S-172 R2 ICG graded VF30. Style II Hair with Small 8. Glossy chocolate brown. No roughness or verdigris, only minor nicks consistent with the grade. LDS, Breen state VI, with a strong cud break at ICA. Our grade is F15.



222. 1798 S-173 R3 F12+. Style II Hair with Small 8. Slightly sharper but there is a trace of microscopic roughness on the bust tip and in the field above near the rim and at the opposing area around ES-OF. This minor roughness appears to be from an uneven strike that failed to completely strike out the usual tiny planchet imperfections in those areas. Otherwise the surfaces are quite nice with only trivial contact marks consistent with the grade. Frosty chocolate brown with steel brown toning on the highpoints and lighter brown in protected areas. LDS, Breen state VIII, with strong cud breaks at LI and ERTY. The cud at LI does not quite touch the top of that I. Ex Denis Loring-G. Lee Kuntz, Superior 10/6/91:194-Tom Reynolds 4/26/02-Terry Denman.



223. 1798 S-173 R3 G4. Style II Hair with Small 8. Slightly glossy chocolate with specks of darker olive brown toning scattered over the obverse. The obverse is slightly weaker while the reverse is stronger. The date is weak, only the upper half visible, and there is weakness on TATES-OF-A, but the remainder of the legends are clear. The weakness mentioned is due mostly to an uneven strike, which is typical of the later states of the variety. TDS, Breen state VIII late. Cud breaks show at LI and ERTY, and the cud at LI touches the top of the I. This lot and the previous one clearly show the difference found in Breen's version of the latest die state. Ex Jonathan Kern 4/84 2006 EAC Sale, M&G Auctions 5/6/2006:167.

224. 1798 S-176 R4 G5. Style II Hair with Small 8. Glossy light chocolate brown. Smooth surfaces with only minor contact marks. The date is strong and the legends are clear. M-LDS, Breen state VI. Ex McLaughlin & Robinson Auctions 2/87:329-G. Lee Kuntz, Superior 10/6/91:770



225. 1798 S-177 R4+ F15. Style II Hair with Small 8. Clapp Plate Coin. Frosty dark steel brown and chocolate. The surfaces are decent but a glass reveals uniform extremely faint granularity covering both sides. Otherwise this cent is very close to VF20. No verdigris, and the only notable marks are an old scuff hidden in the patina on the shoulder and a light rim bruise at the R in AMERICA. The date is bold and the legends are strong. LDS, Breen state V. The die crack up from the bust is strong and fine die rust covers the bottom of the obverse. Called F15 and tied for CC#10 in the Bland census. Noyes says VF20 net VG10 and tied for CC#12, his photo #32652. The reverse is plated in Clapp. Comes with an impressive provenance. Ex Howard R. Newcomb, J. C. Morgenthau #458, 2/7/45:251-J. C. Morgenthau #461, 5/16/45:251-Milton A. Holmes, Stack's 10/5/60:1411-Willard C. Blaisdell-Gordon J. Wrubel-Myles Z. Gerson-Ray Chatham-Del Bland 1/79-Dr. Willard J. Carmel, Jr.-Jack Beymer-Jack Robinson, Superior 1/29/89:368-Tom Reynolds 12/99-March Wells 8/14/01-Terry Denman.

226. 1798 S-177 R4+ AG3. Style II Hair with Small 8. Double Struck Off Center. Slightly sharper but ugly from fine to moderate roughness. The date is weak, but much of that problem is a result of the double strike. There are traces of verdigris on both sides and a rim bruise at the first A in AMERICA. Slightly glossy dark chocolate and olive brown. Double struck with a slight rotation between impressions, largest at the bust tip, and at least one of the strikes was slightly off center. The low grade and roughness make determining what happened more difficult than it should be, but it appears the second impression was the one that was off center to K-10.



227. 1798 S-179 R2 EF45. Style II Hair with Small 8. Corrected E in AMERICA. Five points sharper with a collection of very tiny ticks on the neck and in the field under the chin. Frosty steel brown with lighter brown and tan faded down from mint color in protected areas. Nicely struck M-LDS, Breen state IV. The swelling left of the lowest curls is obvious and the E over backwards E in AMERICA is clear.



228. 1798 S-181 R3 ANACS graded VF35 Details, Corroded. Style II Hair with Small 8. Sharpness VF25 but retoned steel brown and chocolate with tan in protected areas on the reverse. The surfaces are mostly decent but there are small patches of fine roughness in the field over the bust, and the fields on the reverse are covered with microscopic granularity. No verdigris or contact marks. LDS with a slightly raised retained cud break at the bust tip. Our grade is net F15. The attribution is noted on the ANACS label.



229. 1798 S-182 R4 VF20. Style II Hair with Small 8. Ten points sharper but covered with extremely faint roughness. No verdigris and only a couple minor marks, including a faint hairline scratch across the cheek and a rim bruise opposite the chin. Slightly glossy chocolate and steel, possibly lightly cleaned and retoned. MDS, Breen state II.



230. 1798 S-183 R5 VG7. Style II Hair with Small 8. Sharpness F15 but covered with fine porosity. No marks or verdigris. Recolored dark steel brown and chocolate with traces of lighter brownish orange in protected areas. Clear date and legends.



231. 1798 S-185 R2 VF25. Style II Hair with Small 8. Ten points sharper with a half dozen rim nicks on each side, the notable ones at the first S in STATES and second A in AMERICA, and there is a dull nick on the cheek near the ear. Otherwise the surfaces are smooth and glossy offering outstanding eye appeal. Choice glossy chocolate brown with underlying frost in protected areas. EDS, Breen state I.



232. 1798 S-185 R2 VF20. Style II Hair with Small 8. Glossy chocolate and steel brown. Choice and virtually flawless except for a dull rim nick opposite the mouth. MDS, Breen state V.



233. 1798 S-186 R2 PCGS graded "Genuine". Style II Hair with Small 8. Sharpness VF25 with hints of microscopic roughness on both sides. No verdigris, but there are a few faint hairline scratches on the portrait plus microscopic brushlines on both sides. Chocolate and dark steel brown, possibly retoned. The date and legends are bold. MDS, Breen state VI. Our grade is net F15.

234. 1798 S-187 R1 EF40. Style II Hair with Small 8. Five points sharper but lightly cleaned and nicely retoned glossy chocolate and olive brown. No roughness. A dull, light diagonal nick in the field under the chin is the best identifying mark. Nicely struck EDS, Breen state I.



235. 1799/8 S-188 R4 AG3. Overdate 9 over 8. Rather glossy dark olive and steel. The surfaces are mostly smooth but tiny pitmarks cover much of the field behind the portrait. A dull nick over the right side of the second 9 is the only notable mark. The date is easily readable, although the lower part of the 179 is fading into the rim below. LIBERTY is clear but only about half the reverse legend remains readable. Certainly not perfect, but not bad for the grade.



236. 1800/798 S-191 R3 F15+. Overdate 800 over 798. **Style I Hair.** Sharpness VF30 or slightly better with extremely fine corrosion at TED into the wreath below. Otherwise the surfaces are nice showing only traces of microscopic roughness under strong magnification. There are faint traces of verdigris in the roughness at TED but no notable signs of contact. Slightly glossy dark steel brown and chocolate. MDS, Breen state IV. The overdate is obvious on all 3 digits.

237. 1800/798 S-191 R3 VG8. Overdate 800 over 798. **Style I Hair.** Sharpness F12 with patches of shallow corrosion and verdigris on both sides, mostly on the reverse. No contact marks worthy of mention. Slightly glossy olive and steel with lighter steel brown highpoints. The date and legends are clear and the overdate is visible. LDS, Breen state VII.

238. 1800/798 S-191 R3 VG7. Overdate 800 over 798. **Style I Hair.** Very slightly sharper but there is a rim dent at BE in LIBERTY and the fields are covered with extremely fine roughness. Decent eye appeal in spite of the minor defects. Slightly glossy steel brown with darker chocolate and olive brown toning in the fields and protected areas. Strong date and clear legends except for the fraction, which is heavily swollen from the late die state.



239. 1800/79 S-192 R3 ANACS graded VF30 Details, Corroded. Overdate 80 over 79. **Style II Hair.** Sharpness near VF25 but covered with very fine roughness with reddish scale scattered over both sides, mostly tucked into protected areas. A rim nick at the bust tip is the only notable contact mark. Dull dark olive and chocolate. M-LDS, Breen state III. The overdate is clear. Our grade is net VG10.



240. 1800/79 S-195 R5 G4+. Overdate 80 over 79. **Style II Hair.** Slightly sharper but relatively dull from microscopic granularity under the dark steel and olive patina. The date is weak but easily readable and the legends are complete.



241. 1800 S-198 R5+ Fair-2. Sharpness G5 or so but there is a strong, dull punch on the reverse at S-O that created a significant bulge on the bust. A strong scratch near the rim over the bust and another at F-AME are the other notable marks. Fortunately the date remains complete and easily readable and the legends are readable except for the O in OF. The die crack from the ribbon end to the top of the 1 in the denominator is clear. EDS.

242. 1800 S-199 R4 G5. Off Center. Glossy chocolate brown with lighter steel brown and chocolate devices. Smooth and attractive for the grade, a couple tiny rim bruises at AM the only notable marks. LDS with strong swelling that obliterates D-ST and the wreath below AME. Struck 5% off center to K-4.



243. 1800 S-200 R3 G5. Slightly sharper but there is a scratch in the field off the hair ribbon and a seuff at CE in CENT. Glossy dark olive and steel brown with fine granularity under the natural patina. M-LDS, Breen state VII, showing a clearly defined rim eud break at TAT. Ex McCawley & Grellman Auctions/Superior 9/19/99:430.



244. 1800 S-200 R3 G4. Very slightly sharper but a bit dull from extremely faint granularity under the slightly glossy dark steel and olive patina. No verdigris or notable marks. The date is strong and the legends are complete except on those parts of the reverse affected by die swelling. MDS.

246. 1800 S-202 R4+ VF20. Off Center. Ten points sharper with uniform extremely fine roughness under a rather glossy olive brown patina with lighter chocolate toning on the highpoints. No marks or verdigris, and the eye appeal is quite nice. MDS, Breen state IV. Struck 5% off center to K-6.



245. 1800 S-201 R4+ G6. Very slightly sharper with traces of microscopic roughness on the obverse and some minor contact marks on both sides, including a nick at the right bottom of the E in ONE. Rather glossy chocolate and olive brown. The date is bold and the legends are complete.



247. 1800 S-202 R4+ G5+. Glossy chocolate and olive brown. Smooth and attractive just a few trivial contact marks. The only notable defects are a couple old, fine scratches in the field off the end of the chin. LDS, Breen state VII, with extensive die failure evident on both sides. Most of ED STATES OF AM is now obliterated by heavy swelling of the reverse die. An attractive lower grade example of this very impressive die state



248. 1800 S-205 R4 VF20. Five points sharper but there is a small dig on the throat and a pair of light rim bruises on the bottom of the obverse. The surfaces are smooth except for a trace of microscopic roughness at MERI. MDS, Breen state II.

249. 1800 S-206 R3 PCGS graded VF30. Glossy olive brown with slightly lighter steel brown toning covering the devices. The surfaces are attractive but a glass reveals hints of extremely fine granularity under the natural toning. No verdigris, and the only contact mark is a tiny, barely visible rim bruise over the second T in STATES. MDS, Breen state II. Our grade is net VF20+, close to VF25.



250. 1801 S-213 R2 F12. Sharpness VF25 but there are specks of verdigris scattered over the obverse, mostly on the left side, and the reverse is dull from microscopic granularity. A small rim bruise under the bust tip, another over the B in LIBERTY, and a third at the O in OF are the notable marks. Reddish chocolate brown speckled with darker olive brown. The obverse is mostly glossy while the reverse is closer to matte. MDS, Breen state IV. The date and legends are complete and clear.

251. 1801 S-214 R3 G4. Slightly glossy olive and steel. The surfaces are not perfect but they are not bad for the grade. Some minor roughness in the fields but no notable marks. LDS, Breen state III. Ex Bowers & Merena 12/4/03:148.



252. 1801 S-215 R4+ AG3. Slightly sharper but cleaned and partially retoned reddish brown and golden tan. No corrosion. A hairline scratch down the portrait and a dull nick under the bust are the notable marks. Strong date and readable legends. EDS, Breen state I.



253. 1801 S-216 R1 VF35. Clipped Planchet. Very attractive lustrous dark chocolate and olive brown. The surfaces and luster offer outstanding eye appeal; only the relatively dark color keeps this piece from a choice rating and a higher grade. The only marks are a nick just right of the Y in LIBERTY and a few tiny ticks hidden on the bust above the 801. There is very little wear on this cent, and it could easily be called EF40 or even better without much argument. MDS, Breen state II. There is a relatively significant curved planchet clip that affects LIB and the dentils at the U in UNITED. The dentils across the planchet display some weakness which is called the "Blakesley Effect" which is a sure sign of a genuine mint clip. Removed from an NGC slab graded AU50 (the NGC label is included, and it mentions the "5% curved clip.") This is a very nice mint error.

Rare 1801 S-218



254. 1801 S-218 R5+ G4. 3-Error Reverse. Slightly sharper, especially on the reverse, but covered with uniform very fine roughness under a rather glossy chocolate brown patina. No marks or verdigris. The date is weak but readable and the legends are complete in spite of weakness on LIBERTY and TES-OF. The 3 die-cutter errors on the reverse are obvious. EDS, Breen state I.



255. 1801 S-219 R2 G4. 3-Error Reverse. Slightly glossy chocolate brown. Decent but not perfect surfaces: overall quite acceptable for the grade. The notable defects are a shallow pinprick on the base of the neck and light roughness inside the wreath. E-MDS, Breen state III. The 000 denominator is weak but the other 2 die-cutter errors are strong, as is the date.



256. 1801 S-219 R2 VG10. 3-Error Reverse. Sharpness VF25 but both sides show faint pinscratch abrasions intended to smooth over minor roughness and perhaps to strengthen the hair details (although this was not done with any degree of skill). The only notable signs of roughness are under LIBE, and it is not too distracting. Retoned a slightly glossy dark steel brown and chocolate. MDS, Breen state V. The date is bold and the legends are strong, including all 3 of the die-cutter errors. This one looks better than it sounds.



257. 1801 S-219 R2 G6. 3-Error Reverse. A couple points sharper but covered with uniform microscopic granularity that dulls the surfaces, especially on the obverse. Slightly glossy dark olive and steel. No marks or verdigris, only a bit of fine dirt in protected areas around the wreath. M-LDS, Breen state V. All 3 of the die-cutter's errors on the reverse are clear. The date is strong and the legends are complete.



258. 1801 S-221 R2 G6. Corrected Fraction 100 over 000. Sharpness VF25 but lightly corroded, strongest on the left side of the reverse. No marks or notable signs of verdigris. Slightly glossy dark olive and steel. The date is strong and the legends are complete, but the corrected fraction feature is very weak. MDS with thin rim cud breaks at F-AM.



259. 1801 S-223 R1 VF20. Error Fraction 1/000. Five points sharper with extremely faint hairlines in the field before the portrait. Glossy steel and chocolate brown with a couple small splashes of lighter brown toning. M-LDS, Breen state V (Breen's state V actually occurs prior to his state IV, if you're keeping track of such things). The error fraction feature is bold. Ex McCawley & Grellman Auctions 7/31/93:617.



262. 1802 S-225 R3 VF20. Five points sharper with too many small nicks on the obverse for the higher grade. The only notable mark is a dull nick high on the shoulder at the drapery line. Mostly glossy chocolate and steel brown. Extremely rare EDS, Breen state I, before any die clashmarks.



260. 1801 S-224 R1 NGC graded VF30. Glossy dark chocolate and steel with traces of frost in protected areas of the reverse. The notable marks are a light, old pinscratch on the lower neck and bust and a light rim bruise left of the lowest curl. Rare LDS, Breen state IV, with a strong cud break at AME. Our grade is VF25 sharpness net VF20+.



263. 1802 S-227 R2 VF20. Five points sharper with a scrape on the rim at AM and two sharp nicks at the top of the wreath. Otherwise the surfaces and eye appeal are excellent. Glossy chocolate brown. LDS, Breen state III early. Ex Philip Van Cleave, Kagin's 1/30/86:5252-John D. Wright 1/06-McCawley & Grellman 4/3/06-Dan Holmes.

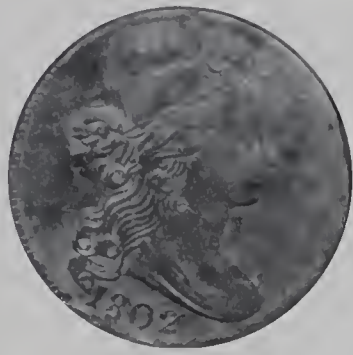


261. 1801 NC-4 R7 Fair-2+. Glossy chocolate and steel brown. The only marks on otherwise smooth, attractive surfaces, are a pair of pinpricks in the field before the neck and chin. Essentially just well worn. The date is easily readable, although the lower third is fading into the rim, and the lower half of LIBERTY remains visible as well. The reverse is unevenly struck, strong on the left half and weak on the right half, leaving ES OF AMER faint or missing. Everything else is easily readable. Quite nice for a low grade cent, and the attribution points for this extremely rare variety are easily found. One of only 9 known of the variety, this being a new discovery, and none of them is in high grade.

264. 1802 S-230 R1 G6. Slightly sharper but a bit dull from extremely faint roughness. No marks or verdigris. Slightly glossy dark steel and olive. Date and legends clear. No at all bad for the grade.



265. 1802 S-232 R1 F15+. Glossy chocolate and olive brown. Very attractive and worthy of a slightly higher grade if not for a patch of microscopic roughness at the L in LIBERTY and a minor rim bruise at D-S. Otherwise the surfaces are smooth and choice. E-MDS, Breen state III.



266. 1802 S-233 R2 VF30. Sharpness near EF40 but there is a dig at S-O and a trace of microscopic roughness under the fraction. Otherwise the surfaces and eye appeal are excellent. Glossy light olive and chocolate with traces of frosty lighter brown and tan in protected areas on the obverse. M-LDS, Breen state V late.



269. 1802 S-239 R3 PCGS graded VF20. Slightly glossy steel brown with traces of light bluish steel in protected areas, most likely from a cleaning with xylol to remove crud from those protected areas. The surfaces are dry and a bit dull suggesting a brushing with Blue Ribbon or some thing similar is warranted. There are numerous microscopic contact marks on both sides, especially at ST and ME, but none of these is significant except for a rim nick opposite the chin. LDS, Breen state V, with a raised sliver between the die cracks before the face. Our grade is VF20 net F15+.



267. 1802 S-235 R3 F15+. Sharpness EF40 but covered with fine porosity, strongest at the dentils on the left edge of the reverse. No marks or verdigris. Retoned a rather glossy light olive and steel brown. Decent eye appeal in spite of the imperfect surfaces and retoning. Nicely struck E-MDS, Breen state III.



Rare Early Die State 1802 S-237



268. 1802 S-237 R2 EF40. Slightly glossy dark olive and steel with underlying mint frost covering the fields and protected areas. Just a few trivial marks, including a small spot of lighter toning in the field above the ribbon and a planchet flake at the right top of the E in STATES, as struck. Very rare EDS, Breen state I, with both dies uncracked and unclashed.



270. 1802 S-240 R3 VF25. Ten points sharper with fine planchet erosion covering the lower part of the reverse at RICA, the fraction, and UNIT. Additional extremely fine roughness shows in the field before the portrait while the remainder of the planchet is smooth and very attractive. Glossy light olive and chocolate with traces of lighter brown toning in protected areas. No marks or verdigris. M-LDS, Breen state III late. The die crack up from the bust reaches the rim right of Y.

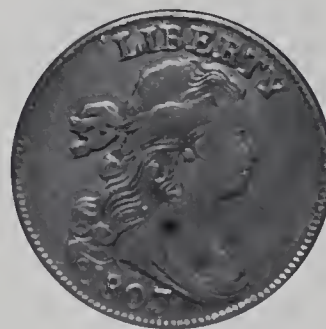


271. 1802 S-241 R1 VF25+. **Stemless Wreath with Doubled Fraction Bar.** Sharpness AU50 or better but dark with faint roughness under the glossy very dark olive and steel patina. No marks or verdigris. Frosty luster shows through in the fields and protected areas, especially on the reverse. M-LDS, Breen state IV, with a strong cud break at F-A. The stemless wreath and doubled fraction bar features are obvious. Ex C. Douglas Smith

273. 1803 S-244 R4 VF25. Close to VF30 with a thin vertical nick in the field off the chin and a small splash of microscopic roughness on the N in UNITED. Glossy light chocolate with steel brown toning on the highpoints. MDS, Breen state II. Called VF30 net VF25 and tied for CC#8 in the Noyes census, his photo #55010. Ex David Lawrence Rare Coins 1/04-Walter Husak.



272. 1802 NC-1 R5+ AG3. Glossy chocolate and olive brown. A few light contact marks on both sides and a patch of crud at RIC. Otherwise decent for the grade, just worn. The date is fading into the rim but it remains easily readable, and two-thirds of the legends are clear. EDS, before the obverse die crack. The spike down from the bust right of the date is visible



274. 1803 S-247 R3 VF20. **Mumps Obverse.** Five points sharper with a light rim bruise at BE in LIBERTY, a small spot of dark olive toning on the neck, and a small but obvious dig under the second T in STATES. Glossy chocolate brown. E-MDS, Breen state I. The "Mumps" cud at the throat is clear. Ex Ray Chatham 10/15/60.



275. 1803 S-254 R1 F15. Five points sharper with too many light contact for the sharpness grade. A faint hairline scratch across the upper part of the neck is the only notable mark. Glossy chocolate brown. E-MDS, Breen state II early. The die clashmarks are clear but the cracks mentioned by Breen for this state have not formed.



278. 1803 S-262 R3 F15. Five points sharper but there is a small, dull dig high on the shoulder and a less-visible dull scratch above the 8. Otherwise this cent is very nice and offers excellent eye appeal. Glossy light olive and chocolate. MDS, Breen state II.



276. 1803 S-255 R1 F15+. Mostly glossy chocolate and steel with lighter steel brown toning on the highpoints. No notable defects, close to VF20. LDS, Breen state IV, with a strong cud break at STA. Ex Phil Bressett 10/84-John D. Wright, 2004 EAC Sale, McCawley & Grellman Auctions 4/17/04:245-Dan Holmes.



279. 1803 S-265 R4 G6+. Large Date and Fraction. A couple points sharper with minor roughness covering the planchet. No verdigris and just a few trivial marks, none notable. Rather glossy chocolate brown with olive brown in protected areas. E-MDS. Swelling has caused STATES to be faint or missing while the date and remainder of the legends are strong. Ex 2002 EAC Sale, lot 342.



277. 1803 S-257 R2 F12. Large Fraction. Slightly sharper with very fine roughness under the glossy dark olive and lighter chocolate brown toning. The only mark is a dull rim nick over the B in LIBERTY. Rare LDS, Breen state V, with a raised retained cud break obliterating most of STATES. Ex Kenney's Coin Shop 5/64-John D. Wright, 2004 EAC Sale, McCawley & Grellman Auctions 4/17/04:250-Dan Holmes.



280. 1803 NC-1 R5+ NCS graded "Genuine". Sharpness G5 or better, especially on the reverse, but the planchet is covered with fine roughness and both sides have been lightly cleaned. It appears the planchet is slightly bent, bulged out on the obverse, concave on the reverse. The highpoints are coppery tan while the protected areas remain dark olive and steel. The date and legends are complete and clear making the attribution very easy. But why someone wanted this cent slabbed is beyond me. Our grade is net AG3.



281. 1804 S-266c R2 VG7. Glossy light chocolate brown. Smooth and attractive, just worn with trivial contact marks. Clear date and legends. LDS, Breen state IV, with cud breaks that connect RTY and MERI to the rim.



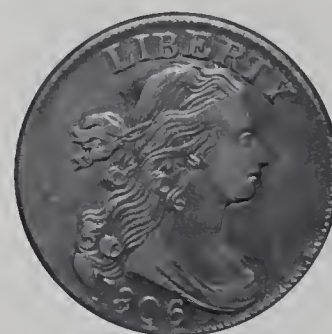
283. 1804 Restrike AU55. Attractive glossy medium brown and light chocolate with steel brown toning on the highpoints. No defects, only a hint of friction on the highest points from mint state. LDS. The reverse is rotated 25 degrees CCW. Removed from an NGC slab graded MS63BN (NGC label included).



284. 1805 S-267 R1 PCGS graded XF45. Glossy chocolate brown with darker olive toning in protected areas on the obverse and frosty light brown toning in protected areas on the reverse. There is some very fine roughness and shallow verdigris in protected areas on the obverse, including a bit of greenish crud inside the B in LIBERTY. A planchet chip of minor clip on the rim above the second T in STATES is a good identifying mark. E-MDS, Breen state III. Our grade is EF40 sharpness net VF30.



282. 1804 S-266c R2 Fair-2. Glossy chocolate brown and steel with some greenish crud caked into protected areas on the reverse. A light scratch across the neck into the field before the chin is the only notable mark. The date is nearly gone, only the top of the 4 remaining, but more than half of the legends remain clear. LDS, Breen state IV. The cud breaks at RTY and MERI are clearly defined and these alone confirm the attribution beyond any doubt.



285. 1806 S-270 R1 F15. Sharpness near VF35 but there are some scratches on both sides, including one through the lower curl to the 1, another along the profile of the neck and bust, and several more in various places on the reverse. The only scratches that catch your unaided eye are some that alter the toning at the O in ONE, but they all count. Otherwise this cent is nearly flawless and the eye appeal is very nice. Frosty steel and chocolate brown with lots of satiny luster showing in protected areas. MDS, Breen state III, before any swelling left of the lowest curl.

Sharp 1807 S-272 Small 7 Over 6



286. 1807/6 S-272 R4+ VG7. Overdate Small 7 over 6. Sharpness F15 or slightly better but lightly corroded with dull scratches in protected areas, all blending perfectly into the glossy dark chocolate brown patina. No verdigris. Sharply struck EDS, Breen state I. The date and legends are bold and the overdate is very strong. Far from perfect but I've seen a lot worse for this rare variety.



287. 1807/6 S-273 R1 VG7. Overdate Large 7 over 6. Glossy chocolate and light olive brown. No roughness or verdigris, only numerous small nicks scattered over both sides. EDS. The date and legends are strong and the overdate is obvious. Ex "Coffin" for 30 to 32 cents on 1/14/28.



288. 1808 S-277 R2 VG10. 12-Star Obverse. Turban Head. Five points sharper, even better on the reverse, but cleaned and nicely retoned glossy chocolate brown. The surfaces are mostly smooth but extremely fine roughness does cover the protected areas on the reverse. A planchet chip or pitmark on the cheek, a short scratch on the 1 in the date, a minor rim bruise at the top of the obverse, and a tiny rim nick at the bottom of the reverse are the notable marks. Excellent eye appeal in spite of the imperfections making the VG10 net grade appear conservative. M-LDS. The first star is completely gone making this an excellent example of the 12-star die state.

289. Trio of Turban Head Cents. Includes 1808 S-279 G4, 1810 S-282 G6, and 1811 S-287 VG8 net G5 for scratches and rim dents. Lot of 3 coins.



290. 1810 S-285 R2 VG10. Turban Head. Glossy chocolate brown. Smooth with only a few trivial marks, including a small pinprick close over the bust tip. MDS.



291. 1811 S-287 R2 F15. Turban Head. Misaligned Dies. Sharpness EF40 but covered with fine granularity and there is a patch of raised corrosion in the center of the jaw line. A nick in the dentils at ER in AMERICA is the only notable contact mark. Slightly glossy dark olive and steel. FDS, Breen state I, with the obverse misaligned to K-9 The eye appeal is not as bad as the net grade might imply, but it's far from perfect.



292. 1811 S-287 R2 VF35. Turban Head. Sharpness EF45 with extremely faint roughness on both sides. The roughness is barely visible with the aid of a strong glass, and this cent offers excellent eye appeal. Lustrous steel brown mottled with chocolate brown. A splash of reddish chocolate toning covers about half of the obverse, but the underlying flowline luster shows through everywhere. MDS, Breen state III.



294. 1812 S-288 R2 VG8. Turban Head. Large Date. Counterstamped. Glossy chocolate and olive brown. No defects, but the obverse is counterstamped two times with "W. KIDDER" and "No 6" (or 9) in the center. Possibly from Dr. M. W. Kidder of Boston Mass, but this version is not listed in Brunk.



295. 1812 S-288 R2 VG10. Turban Head. Large Date. Sharpness VF25 but a bit dull from uniform very fine roughness under the slightly glossy very dark olive and steel patina. No marks. Strong date and legends.



296. 1812 S-289 R1 VF25. Turban Head. Large Date. Misaligned Dies. Slightly sharper with a few too many tiny contact marks for the higher grade, none notable or at all distracting. Attractive glossy chocolate brown with frosty lighter steel brown in protected areas. E-MDS, Breen state II. The repunching on the 2 remains clear and the obverse is misaligned to K-3.5.

293. 1812 S-288 R2 EF40. Turban Head. Large Date. Ten points sharper and the eye appeal is very nice, but there is a collection of tiny contact marks at stars 1-2, and the patina between the stars is a slightly lighter shade of brown (which draws your eye to that spot so you can find the tiny nicks). The remainder of this cent is choice. Lustrous steel and chocolate brown with flowline flash covering the fields and protected areas. LDS, Breen state III.

297. 1813 S-292 R2 VF20. Turban Head. Ten points sharper but there is a repaired spot above the second 1 in the date, a rim nick at ME in AMERICA, and opposing light rim dents at the top and bottom of the reverse. Otherwise this piece is an attractive glossy chocolate and olive brown with flowline luster in protected areas. M-LDS, Breen state IV.

1813 S-293 Breen Plate Coin



298. 1813 S-293 R2 VF35. Turban Head. Breen Plate Coin. Sharpness AU50 but poorly struck due to an incomplete (thin) planchet at stars 5-7 and the opposing area at UNITED and the wreath ribbon. The remainder of the details are nicely impressed. Frosty dark chocolate and steel. The only mark is a disjointed shallow scratch from star 4 to the ear, clearest on the cheek. LDS, Breen state IV. This cent is plated in the Breen book and is identified there as "State I" to illustrate an "axial misalignment." Both claims are incorrect, but the photo is undoubtedly of this cent.



299. 1814 S-294 R1 F12. Turban Head. Crosslet 4. Sharpness near VF20 but the fields are covered with microscopic roughness and there are a few minor contact marks on both sides including a light rim bruise at the E in AMERICA. No verdigris. Rather glossy olive and steel with lighter chocolate toning covering the devices. MDS. Struck slightly off center to K-4.5.



300. 1814 S-295 R1 VF20. Turban Head. Plain 4. Slightly sharper but there are a few rim bruises, including one at star 13 and a couple more at S-OF-A, plus a small collection of light contact marks under the wreath. Frosty chocolate and dark steel brown with satiny luster in protected areas on the reverse. M-LDS, Breen state IX.



301. 1816 N-1 R4 VG10. Slightly sharper with some rim bruises on both sides, the strongest one at OF. Slightly glossy dark olive and chocolate brown. E-MDS showing the usual rim cud breaks on the obverse but no die crack on the reverse.



302. 1816 N-3 R4 VF20. Sharpness VF35 with traces of verdigris scattered over the obverse and a few contact marks on the chin. Glossy dark chocolate and olive brown. DS. Ex McCawley & Grellman Auctions/Superior 9/21/98:1274.



303. 1816 N-3 R4 VG8. Off Center. A couple points sharper but cleaned and retoned dark steel brown with lighter brown highpoints. The surfaces are slightly dull from uniform extremely faint granularity. No verdigris or contact marks. Struck 50% off center to K-2 leaving the entire date on the planchet. A remarkable example of this type of mint error.



304. 1816 N-8 R3 VF35. Ten points sharper with some light contact marks, including a couple dull scratches at the bottom of the obverse and a trail of ticks at S-O on the reverse. Frosty steel brown and chocolate with lustrous golden tan faded down from mint color in protected areas on both sides. M-LDS showing two clearly defined rim cud breaks on the right side of the obverse but none at stars 3-4.



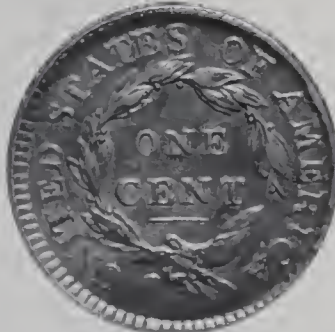
307. 1817 N-3 R2 VF30. Nice glossy chocolate brown with a small splash of lighter brown toning under ENT. Very nice, nearly choice for the grade. MDS with flowlines in the fields but before any trace of the "Mouse Break" on top of the head.



305. 1816 N-9 R3 VF25+. Glossy chocolate brown with frosty flowline luster covering the protected areas. A bit of dirt here and there and a small splash of darker toning at TE in UNITED, otherwise smooth and very nice for the grade, close to VF30. LDS.



308. 1817 N-4 R3+ VF30. Sharpness near mint state but covered with uniform extremely fine granularity. There are a few specks of greenish verdigris, the largest of these in the field close before the neck. Slightly glossy very dark olive and steel. Possibly improvable. Sharply struck E-MDS.



306. 1817 N-1 R4 VF25. Ten points sharper with too many light contact marks on the obverse for the sharpness grade, none notable or distracting. There are microscopic traces of verdigris dusted into protected areas on the reverse, but overall this cent offers decent eye appeal for the grade. Frosty chocolate and light olive brown. LDS with clear die cracks from the coronet tip and end of the bust.



309. 1817 N-4 R3+ PCGS graded VF30. Frosty dark steel and olive brown. Most likely recolored. No corrosion, verdigris, or notable signs of contact. A small area of lighter brown toning nestled under the chin and a tiny tick on the tip of the chin are good identifying marks. M-LDS. The die crack through the base of the date is strong and a radial crack extends from this crack to the dentils below star 1. Our grade is VF25 net VF20.

310. 1817 N-14 R1 EF40. Misaligned Dies. Glossy light chocolate with frosty lighter brown in protected areas. Flowline luster shows on both sides and this cent offers excellent eye appeal for the grade. EDS (earlier than the usual Randall Hoard examples) with the obverse slightly misaligned to K-5.



311. 1817 N-14 R1 AU58. A satiny mint state cent that has a few too many tiny ticks on the cheek for a mint state grade. Undoubtedly this piece is from the Randall Hoard and never saw circulation. Frosty bluish steel and light olive. A small rim nick just right of the date is a good identifying mark. MDS.



315. 1818 N-1 R2 EF45. Attractive glossy light steel brown and chocolate. Satiny mint frost covers the protected areas. A tiny rim nick at star 4.5 is a good identifying mark. MDS with a thin rim cud break from star 3 to well past star 4. Great eye appeal for the grade. Ex 2004 EAC Sale, McCawley & Grellman Auctions 4/17/04:342.



312. 1817 N-16 R1 NGC graded AU55. 15-Star Obverse. Glossy olive brown with underlying flowline luster covering the fields and protected areas. No spots or stains, just a few trivial contact marks. These include a pinprick right of star 2 and a few more left of star 12. MDS with the small cud over AM and the reverse slightly misaligned to K-2.5. The reverse is rotated 20 degrees CCW. Our grade is VF35+, very close to EF40, with excellent eye appeal.



313. 1817 N-17 R4 VG8+. A couple points sharper with a few old, light scratches in the field behind the head. Otherwise this cent is quite attractive for the grade. Glossy light chocolate brown with lighter brown toning in protected areas. EDS but not the earliest with a fine die crack connecting the bases of D-ST. The strike is a bit uneven, strong on the left and weaker on the right thanks to non-parallel die faces. Close to VG10.

314. Pair of 1817 N-17 Cents. Includes MDS (right top of first T in STATES raised) G6 net G4 for reverse scratches and LDS (cud break at TATE) VG10 net AG3 for damage. Lot of 2.

316. 1818 N-2 R4 NGC graded F12. Obverse Brockage. Glossy dark chocolate brown. The surfaces are smooth and display no notable marks. This is an obverse brockage strike which is very slightly off center to K-6. The normal and incuse impressions are perfectly aligned (which suggests the first cent did not shift in the press as this planchet was inserted). While this obverse was used to strike both the N-1 and N-2 varieties, the relatively early die state suggests this piece was struck during the N-2 die marriage. Brockage strikes are relatively common for 1817 but not for 1818, and this is a very nice one. Our grade is VG8. The brockage error is noted on the NGC label.

317. 1818 N-4 R4+ Fair-2. Rather glossy dark reddish chocolate brown and olive. There is some very light roughness with shallow verdigris, plus a dull contact mark just above the outer hairbun. The surfaces aren't perfect, but essentially this cent is just heavily worn. The date is clear and about a third of the reverse legend is readable (although none of it is clear). Later die state with obvious swelling on the obverse.



319. 1818 N-8 R3 VF35. Attractive glossy chocolate brown. Smooth and nearly flawless, just a few tiny ticks of no consequence. LDS with rim cud breaks from star 5 to star 8.5. The center dot on the reverse is gone. Ex John Ward, Jr., 2/02.



318. 1818 N-7 R1 F12+. Distorted Obverse Strike with Twisted Stars. Slightly sharper with too many tiny nicks for the higher grade. None of the marks is significant or distracting. Glossy medium brown with chocolate toning on the highpoints. EDS. The reverse was struck normally. The obverse, however, shows distorted details, probably because the die twisted upon impact (loose in the press). This caused the date numerals to be very thin and the stars to be distorted with the inner and outer radial points clearly bent. The effect is to create a look that appears counterfeit, but it is absolutely a mint product of the N-7 dies. This die state was not mentioned in the Newcomb or Wright books, but the phenomenon was discussed by Wright in a *Penny Wise* article many years ago. An extremely rare mint error; your cataloger has seen 3 examples. Ex Mickey Arconti, McCawley & Grellman Auctions/Superior 7/27/03:88.



320. 1818 N-9 R3 EF40. Slightly sharper with a faint spot at star 7 and barely visible hairlines in the fields on both sides. Frosty chocolate and steel brown with satiny mint luster in protected areas. EDS with sharp dentils around both sides. The obverse is slightly misaligned to K-11.



321. 1818 Struck Counterfeit from Handmade Dies. 14 Stars with Continuous Wreath Reverse Design. Double Struck Obverse. About Good-3. Slightly sharper on the reverse but this piece has fine hairline scratches on the obverse and several dull dents on the reverse, the largest of these down from just below the E in CENT. The date and reverse legends are complete and clear except for the second S in STATES, which was obliterated by the strong reverse dent. Glossy dark chocolate brown with corrosion-free surfaces. Struck from crudely-made dies that approximate the normal Matron Head design, but there are 14 stars on the obverse, the portrait of Ms Liberty is crude and cut in very shallow relief, the wreath is continuous, and there is no fraction at the bottom of the reverse. The legend UNITED STATES OF AMERICA begins at 1:00. That places the U in UNITED is where one would expect to find the O in OF on a "normal" large cent. The obverse was double struck with a rotation of about 2 millimeters between the two strikes leaving an extra 8 clearly visible to the right of the "normal" date. The reverse is not double struck and is much sharper than the obverse, as usual, as the obverse is bulged outward on the few examples known. The dies are aligned head-to-foot, similar to the regular Federal cents, with only a slightly clockwise rotation. A strong die crack extends from the rim into the field between stars 11 & 12, and this crack has been observed on the three examples known to this cataloger (although it is strongest on this piece). It should also be noted that all three of the examples studied by this cataloger have a double struck obverse, but all show a different rotation or shift between impressions (so we know the die itself was not doubled). None of the known examples shows evidence of being double struck on the reverse. Comparable to the famous 1848 Small Date struck counterfeit cents, although far fewer of these 1818 cents are known (three known). Weight 171.1 grains, which makes this example the heaviest of the known examples. Diameter is 29.0 millimeters. (See page 360 of the November 2000 issue of Penny-Wise for a discussion of this interesting and extremely rare oddity.) The variety has been known for well over 100 years. The first appearance was of a low grade example offered in the Maris collection auctioned by H. P. Smith 6/21/1886:284, and a more recent offering of a nicer example was made in a Stack's sale 1/20/2004:2112. This example was discovered in a junk box circa 1988 and was the subject of an article in Coin World written by Michael Hodder (article included, and this coin is plated in the article). Ex A junk box circa 1988-Jim Skalbe-Stack's auction (not sold)-Jim Skalbe 11/88-Tony Terranova 12/88-R. E. Naftzger, Jr., McCawley & Grellman Auctions/Goldberg's 2/1/2009:76.



322. 1819/8 N-1 R1 VF35. Overdate 9 over 8. Five points sharper but lightly cleaned and nicely retoned glossy chocolate and medium brown with traces of frosty very faded red in protected areas on the reverse. The toning is a couple shades darker on the upper left of the obverse, but both shades are attractive. MDS. The overdate feature is obvious. Ex L. Neilson-Louis Ullian, McCawley & Grellman Auctions/ Superior 6/5/2000:290.



325. 1819 N-4 R3 F15. Glossy dark steel and olive brown mixed with some tiny splashes of lighter steel brown on the reverse. A tiny rim bruise at star 4 is the only notable mark. LDS.



323. 1819 N-2 R1 PCGS graded AU50. Large Date. Dull reddish chocolate and steel with a splash of light olive on the right side of the obverse. The face and much of the neck display microscopic roughness, but there are no marks. This one should be broken out and brushed to uncover the natural luster. It's been housed in this old green label holder for far too long. MDS with obvious die rust on the reverse but repunching remains obvious on the 8 and 9. Our grade is EF40 net VF30 for the roughness on the portrait.



326. 1819 N-5 R3 VF25. Glossy medium brown and light chocolate with darker steel brown toning on the highpoints. Nice eye appeal. The only notable mark is a dull diagonal nick high above the N in ONE. E-MDS. The die line connecting the bases of the T & E in STATES is complete. Ex George Ramont-Jules Reiver 5/80-Bob Vail, Superior 9/7/97:395.



324. 1819 N-4 R3 PCGS graded VF30. Sharpness VF25 with extremely fine roughness hidden under a glossy chocolate and olive brown patina. No marks or verdigris. LDS. The die line connecting the feet of the T & E in STATES is gone. Our grade is net VF20.



327. 1819 N-7 R4 NGC graded VF25. Glossy chocolate and olive brown. No defects, just wear and insignificant contact marks. EDS. Our grade is F15. The attribution is noted on the NGC label.



328. 1820/19 N-2 R2 VF35. Small Overdate 20 over 19. Sharpness at least AU50 with a splash of very light roughness at stars 3-5 and splashes of stronger roughness at ITE, ON., and ATES on the reverse. The remainder of the planchet is smooth and lustrous offering excellent eye appeal. No verdigris or contact marks. Lustrous steel brown and light chocolate with darker chocolate and olive toning in the splashed areas. MDS. The overdate remains visible on both digits.



330. 1820 N-9 R3 VF20. Large Date. Ten points sharper but dark with extremely faint roughness well hidden under the natural patina. Glossy dark olive and steel with lighter steel brown toning on the highpoints. No marks or verdigris. Nice eye appeal in spite of the dark toning. MDS.



329. 1820 N-5 R3 PCGS graded MS63 Brown. Small Date. Frosty light steel brown with darker steel brown toning on the highpoints and faded mint color showing through in protected areas on both sides. The surfaces are satiny and offer excellent eye appeal. The only notable defect is a short, faint hairline scratch in the field before the coronet fading out as it reaches down into the field before the eyebrow. Later die state with very fine die rust covering the portrait and minor dishing at the reverse rim. Our grade is AU58. Noyes says AU55 net AU50 and tied for CC#6, his photo #20906. Only three mint state examples are known. One of those is in ANS. Comes with a nice provenance. Ex Baldwin's (London)-New Netherlands Coin Co. #56, 1962:549-Willard C. Blaisdell 9/76 (via Del Bland)-R. E. Naftzger, Jr., 1989 EAC Sale, lot #233 (there graded MS60 by Noyes)-Dr. Bob Shalowitz-Dennis Mendelson, Superior 2/3/91:284.



331. 1820 N-11 R2 EF45. Large Date. Glossy steel brown and chocolate with tiny wisps of darker olive toning on both sides. Frosty flowline luster covers the fields and protected areas on both sides. Excellent eye appeal. No marks or other defects. MDS.



332. 1820 N-13 R1 NGC graded MS65 Brown. Large Date. Choice lustrous bluish steel brown and chocolate with 15-20% of the mellowed mint color remaining. A small spot of very light carbon at the leaf under the second S in STATES is the only notable mark. MDS, the usual Randall Hoard die state. Our grade is MS63.

333. 1820 N-14 R5- G6. Large Date. Sharpness F12 but covered with minor roughness. No significant verdigris, but there are some marks on the rim, including a rim nick at star 13, a rim dent at star 2, and a small rim dent at the M in AMERICA. Rather glossy dark olive with lighter steel brown toning on the highpoints. Clear date and legends.



334. 1822 N-3 R2 F15+. Glossy light chocolate brown with steel brown toning on the devices. No defects, close to VF20. E-MDS. The small lump between the T & A in STATES is clear.



337. 1822 N-8 R4 VF30. Glossy chocolate brown on the devices with frosty lighter brown toning in the fields and protected areas on both sides. A thin, light contact mark under star 7 is the only notable defect. M-LDS with a clear bisecting die crack on the reverse extending through the F in OF down to the wreath ribbon.



335. 1822 N-3 R2 VF35. Glossy chocolate with frosty lighter steel brown toning in protected areas. No defects. LDS. The small lump between the T & A in STATES has been polished off the die.



338. 1822 N-8 R4 VF25. Sharpness EF40 or slightly better but there are several fine scratches in the field before the portrait and some tiny nicks scattered over both sides. Recolored glossy dark olive and steel with traces of lighter tan and light brown in protected areas. Nicely struck E-MDS. The bisecting die crack on the reverse has not formed.



336. 1822 N-7 R3+ VG10. Ten points sharper but covered with uniform fine to moderate granularity under a slightly glossy dark olive and steel patina. No marks or verdigris.

339. 1822 N-8 R4 F15. Sharpness VF20 with some contact marks, including a nick right of star 4, another over the B in LIBERTY, and one under the eye. A shallow planchet void affects the I in UNITED. Glossy chocolate brown. M-LDS. A fine die crack bisects the reverse.

340. 1822 N-9 R5- G5. Very slightly sharper but covered with fine roughness under a slightly glossy dark olive and steel patina. The obverse displays more gloss than the reverse, which is nearly matte from the fine roughness. No marks. Strong date and legends. EDS. Ex McCawley Grellman Auctions/ Superior 2/7/2000:2106.

341. 1822 N-9 R5- G4+. Glossy chocolate brown. Smooth and attractive for the grade, close to G5. Strong date and clear legends, although the tops of TES OF AM are starting to flow into the rim. EDS.



343. 1823 N-2 R2 G5. Incomplete Planchet. Rather glossy chocolate brown. A shallow planchet void is located where star 1 should have been. E-MDS. Struck normally except for obvious weakness at stars 1-4 and the opposing STATES due to a thin area in the planchet. Everything else is clear.



342. 1823 N-2 R2 EF40. Ten points sharper but there are splashes of extremely faint roughness at stars 11-13 and under the 23 in the date. Extremely faint hairlines show on both sides, but it takes a glass to find them. Otherwise the surfaces are satiny and attractive displaying only a few trivial ticks. Frosty steel with lustrous lighter steel toning in protected areas. MDS with rim cud breaks at stars 4-6.

344. 1823 Restrike AU50. Sharpness close to mint state but lightly cleaned and coated with lacquer. The only marks are some very light abrasions on the rim cud at stars 4-7, these a result of smoothing down a knife edge that often formed as late state examples were struck. LDS with two clear die cracks on both sides, including the terminal one down through TE in STATES to the wreath. This one would benefit from a proper retoning. Ex John Ashby 3/11/78.



345. 1824 N-4 R2 ANACS graded EF40. Glossy light chocolate brown. Just a few trivial marks and a speck of verdigris at the dentils over the A in STATES. Nicely struck EDS. Our grade is VF20+, close to VF25.



346. 1825 N-1 R4 F12. Sharpness VF25 but there are numerous small contact marks scattered over both sides. The notable marks are two pinpricks over star 1 and rim bruises at the U and I in UNITED. Glossy chocolate and light olive brown. E-MDS, before any rim crumbling at the top of the obverse.



Scarce Intermediate Die State 1825 N-1

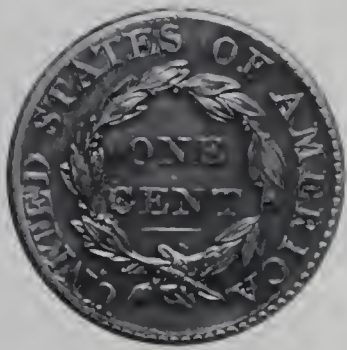


347. 1825 N-1 R4 F12. Sharpness VF30 but covered with microscopic pitting on all but the highpoints. No verdigris, and the only notable mark is a dull rim nick at the first A in AMERICA. Slightly glossy olive with chocolate brown toning on the highpoints. MDS with a small cud break over star 9 that reaches down just beyond the dentil tips into the field.

348. 1825 N-4 R3 PCGS graded AU58. Sharpness EF45 but cleaned and retoned glossy chocolate and light olive with frosty lighter steel brown toning in some of the protected areas. The surfaces are smooth and the only notable marks are two tiny nicks on the lower half of star 6. M-LDS. The obverse is cracked but the reverse remains uncracked. Our grade is VF35.



349. 1825 N-10 R3 VF30. Slightly sharper but there are a few too many light contact marks for the higher grade. The notable ones are some nicks high on the neck and a collection of very light ticks around CE in CENT. Glossy light olive and steel with frosty luster in protected areas. E-MDS, before any dentil fusing on the obverse.



350. 1826 N-1 R2 VF25. Sharpness AU50 but covered with microscopic roughness. Lightly cleaned, now retoned dark olive and steel with lighter chocolate brown highpoints. There is a small patch of fine pinscratches in the field before the lips and traces of hard greenish verdigris at the C in CENT. Sharply struck M-LDS with a rim cud break above star 6. The upper dash right of the 6 is gone but the lower one remains visible (remnants of a misplaced star).



353. 1826/5 N-8 R2 VF20. Overdate 6 over 5. Slightly sharper but cleaned and retoned dark olive and steel with traces of lighter reddish chocolate in protected areas. No notable marks, and the eye appeal is consistent with a significantly higher grade thanks to flowline luster that covers the protected areas. M-LDS. The overdate inside the top of the 6 remains clear and crumbling fills the upper inside notch of the N in ONE.



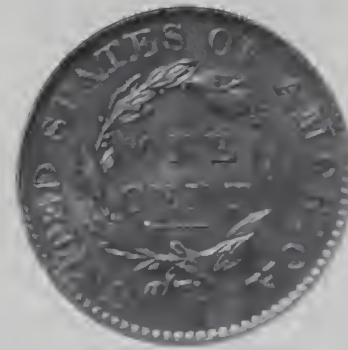
351. 1826 N-1 R2 G6. Double Struck. Slightly sharper with minor roughness on both sides, strongest in a small patch at S-O. Slightly glossy dark steel brown and chocolate. Double struck. The initial strike was 70% off center to K-3 and the second was normal. The profile of Ms Liberty from the first strike is clearly visible under the date, two stars show on the bottom part of the bust, and an arc of dentils crosses the neck. At the opposing area on the reverse there is clear evidence of an off-center obverse brockage indicating the off-center strike was a brockage error as well. This is a neat multiple mint error and the mistakes remain clear in spite of the grade.



354. 1827 N-8 R3 VF35+. Five points sharper with a few too many microscopic contact marks for the sharpness grade. The notable marks are a pair of pinpricks on the nose, another on the tip of the bust, and a faint hairline scratch in the field from the right point of star 6 down to just above star 1. Glossy medium brown with chocolate and steel toning on the highpoints and frosty tan in protected areas. MDS. The die cracks on the obverse are clear and the fields are covered with microscopic radial flowlines. Ex Del Bland-Stu Hodge, 2004 EAC Sale, McCawley & Grellman Auctions 4/17/04:434.



352. 1826 N-3 R3 VF20. Ten points sharper but there are a few patches of extremely fine roughness on both sides, the strongest of these at UN in UNITED. No verdigris. Frosty dark chocolate and steel with tiny swipes of lighter brown toning on the obverse. Possibly lightly cleaned and retoned. E-MDS with minor rim crumbling over star 6.



355. 1829 N-2 R2 NGC graded MS62 Brown. Attractive lustrous olive and chocolate brown with hints of bluish steel overtone. Satiny mint frost covers the fields and protected areas. No defects, only light friction on the highpoints. LDS. The obverse has been lapped to remove flowline roughness and the fields near the dentils are now prooflike. Our grade is AU50.



356. 1829 N-3 R3 VF35. **Small Letters Reverse.** Choice glossy medium brown and chocolate with frosty mint luster covering the protected areas. The surfaces and eye appeal of this cent are consistent with a higher grade piece, but the usual soft strike on the hairbuns, stars, and wreath make assigning a higher grade difficult. The surfaces are flawless except for a dull horizontal scratch close over the NT in CENT and a small nick under that N. MDS.



357. 1829 N-4 R4 VG8. **Off Center.** Slightly sharper but covered with extremely faint uniform roughness that's somewhat hidden under a glossy dark olive and steel patina. No marks or verdigris. LDS. The die crack through R in AMERICA is strong. Struck 5-10% off center to K-1.5.



358. 1830 N-6 R4 PCGS graded XF40. **Small Letters Reverse.** Very attractive glossy light to medium chocolate brown with frost in protected areas. Excellent surfaces with only a few contact marks, including a faint diagonal scuff right of star 1, a light horizontal nick above star 2, and a barely visible rim bruise at star 5. The reverse is choice. Fully struck EDS showing full radial lines in all the stars and no weakness anywhere--quite rare thus. Very nice for this tough "Redbook" variety. Our grade is VF30, but I could be persuaded to nudge this one a bit higher if pressed on the issue.

359. 1830 N-9 R6- G4. A couple points sharper but the fields and protected areas are covered with microscopic roughness. No verdigris, but fine hairline scratches cover most of the obverse, strongest in the field before the portrait. In addition there are some dull, very shallow digs at the E in CENT, perhaps in a halfhearted attempt to alter that letter into the "U" that's all too often seen on large cents. Rather glossy chocolate brown that's several shades lighter on the devices than in the protected areas. The date and legends are complete and easily readable, although the lower part of the reverse is weaker as always on this variety. An acceptable example of one of the rarest in-Neveomb varieties in the middle date series.

360. 1830 N-10 R4+ G5+. A point or two sharper but the surfaces are not perfectly smooth, especially on the reverse where traces of dark crud are nestled in the protected areas. Slightly glossy chocolate with darker brown in protected areas. MDS with a sunken retained cud break over ATES. Ex M&G.



361. 1831 N-2 R2 EF45. Sharpness close to mint state but the obverse is stained, especially at stars 7-8, and the stains contain traces of microscopic roughness. The reverse, in stark contrast to the obverse, is beautiful and clearly mint state with traces of faded mint red remaining. Lustrous chocolate and bluish steel with splashes of reddish chocolate and dark olive on the obverse. LDS. A rim cud at star 11 reaches nearly to the outer point of that star.

362. 1831 N-3 R1 VF20. Five points sharper but lightly cleaned and nicely retoned glossy reddish chocolate brown. Smooth and quite attractive. The only mark is a light nick over ON in ONE. MDS. Ex 1987 EAC Sale, lot 434-John Ward, Jr.



363. 1831 N-7 R1 EF45. Slightly sharper but retuned glossy light olive and chocolate with golden sea-green toning in protected areas. NO roughness, only trivial marks, including a faint diagonal hairline right of star 3. M-LDS with crumbling in the outside right notch of the R in AMERICA.

364. 1831 N-10 R3 VG7. Double Struck. Glossy chocolate brown. A rim dent at star 11 is the only significant mark. EDS. This piece was double struck and was rotated about 180 degrees between impressions. The buns of the first strike show between star 3 and the face, the bottom edge of the bust is visible at the top of the head, and several of the stars can be found with a little searching. On the reverse, the TE in STATES are visible at the second A in AMERICA, the F in OF shows at the ribbon tip, and several additional letters of the legend can be found with some effort. Ex Rich Rowe.



365. 1831 N-12 R1 VF30. Sharpness EF45 but retuned glossy reddish chocolate and olive. The surfaces are covered with uniform very fine roughness under the glossy patina. A small planchet fissure on the rim at star 13 is the only mark. E-MDS.



366. 1831 N-12/5 R8 VG7. Glossy light chocolate brown with a couple swipes of darker olive toning on both sides. No significant defects considering the relatively low grade, and a very modest cent if not for the special die state. This is one of only two examples known with a partially raised retained cud break that consumes only a single point of star 13. The other example is a slightly lower grade piece in the Dan Holmes collection.



367. 1831 N-12/2 R6 G4. A few points sharper with an attempted hole at the upper left point of star 8 and at the opposing spot at the bottom of the reverse. There is no light visible through the "hole," but it's close to being all the way through. Otherwise the coin is very nice for a well-worn piece. Glossy chocolate and steel brown. Rare intermediate die state with a 3-point cud break joining star 13 to the rim below. Ex Sam Thurman.



368. 1831 N-12/3 R5 G6. Very slightly sharper but lightly cleaned and retoned glossy light olive and chocolate. No corrosion or verdigris, but there are a few contact marks. The notable ones are a tiny punch at the left base of the first 1, some nicks at the second S in STATES, and a couple fine scratches on the right side of the reverse. LDS, but not the terminal state, with a large "Harpooned Whale" cud break involving stars 12 & 13. The cud at star 12 does not cover the lower left tip of that star. Ex Sam Thurman.



371. 1834 N-5 R5 PCGS graded "Genuine". Large 8 & Stars with Medium Letters. Sharpness near VF35 but covered with extremely faint roughness that dulls the surfaces. The roughness is strongest at UNITED STATES. Traces of verdigris can be found in protected areas on the reverse, but you have to look hard to find it. No distracting marks. Chocolate and darker steel brown. There is a trace of strike doubling on the forehead and chin, but not nearly enough to qualify as a double profile. Our grade is net VF20, which isn't too bad for this tough variety.



369. 1831 N-12/3 R5 G4. Cleaned and retoned glossy bluish steel and olive brown. No marks, just well worn. The date is clear and the "Harpooned Whale" cud break is strong. Not the terminal state as the cud does not cover the tip of the lower left point of star 12.



372. 1834 N-5 R5 F15. Large 8 & Stars with Medium Letters. Five points sharper with extremely faint roughness well hidden under a glossy dark chocolate and olive brown patina. The highpoints are a lighter shade of steel brown. No marks or verdigris. Ex 2005 EAC Sale, McCawley & Grellman Auctions 4/23/05:409.



370. 1831 N-12/4 R4 G5. A couple points sharper but there is a very dull dent in the leaves under the first S in STATES, and a subtle bulge shows in the field off the tip of the nose as a result. Otherwise the surfaces and eye appeal are decent for the grade. Glossy dark chocolate brown with lighter chocolate toning on the devices. Terminal die state, the so-called "Harpooned Whale" state, with a very large cud break affecting stars 12 & 13. The cud consumes the lower left tip of star 12, which identifies this as the terminal state. Doubling shows on the profile from the forehead down to the neck (a result of die bounce). Ex John D. Wright-Darwin B. Palmer.



373. 1834 N-5 R5 VG10. Large 8 & Stars with Medium Letters. Sharpness EF40 or slightly better but both sides show areas of pitting while specks of raised greenish verdigris accent the reverse. Numerous old scratches cover Ms Liberty with some extending into the fields above and left of the portrait. Similar scratches can be found inside the wreath. Not a very attractive cent, but there is lots of meat remaining.

374. 1834 N-5 R5 Fair-2. Large 8 & Stars with Medium Letters. A bit sharper but covered with fine roughness mixed with hairline scratches. The date is faint but readable with a bit of effort. Steel and olive brown with coppery brown highlights thanks to the myriad hairline scratches. A scudzy cent, but as Popeye used to say, "I am what I am."



375. 1835 N-3 R3 VF35. Slightly sharper with excellent surfaces and eye appeal and only a few trivial contact marks. The notable ones are between stars 8-10 and the dentils. Choice glossy chocolate brown. M-LDS with a small but clearly defined rim cud break extending into the dentils left of star 2. Called VF35 and tied for CC#5 in the Bland census. Noyes says VF35 net VF25 and tied for CC#9, his photo #36827. Ex Bowers & Ruddy-Dr. Stanley Holkstad 9/86-Bob Matthews, Superior 5/28/89:755-J. R. Frankenfield, McCawley & Grellman Auctions/Superior 2/17/01:1065.



376. 1835 N-11 R4+ G4. A couple points sharper but dull from extremely fine roughness. No marks or verdigris. The date is readable but not especially clear thanks to the roughness while the legends are far more forthcoming. Steel and chocolate, possibly retoned. EDS.



377. 1835 N-12 R4 G6. Nice glossy chocolate and olive brown with lighter brown toning in protected areas. The obverse is delicately woodgrained. Smooth, void of any notable defects. MDS. Ex Stanley Chen, 2002 EAC Sale, McCawley & Grellman Auctions 4/20/02:735.



378. 1835 N-12 R4 G6. Double Struck. Lightly cleaned and retoned a rather glossy bluish steel and light olive with hints of sea-green in the mix. There are some rim nicks on both sides and several old, light scratches on the obverse, but none of these marks is especially significant for the grade. This cent was double struck. Both strikes were centered in the collar and rotated 10-15 degrees between the impressions. The reverse displays clear doubling on the wreath while the obverse was struck once with the die and once against a blank planchet that was positioned slightly off center to K-10. It appears that the initial strike involved two planchets with the reverse being struck by the die and the obverse pressed against a slightly off center blank planchet rather than the obverse die. Then this planchet was struck again with the 10-15 degree rotation evident on the reverse. The outer points of stars 11 & 12 are visible on the slightly raised area to the right, which suggests this raised lip was present when the die struck. But this one leaves unanswered questions. Have fun.



379. 1835 N-13 R4 EF40. Slightly sharper but there is a very faint hairline in the field close above the head and a dull rim nick at RI in AMERICA. Otherwise the surfaces are smooth and offer excellent eye appeal. Glossy dark chocolate and steel with frosty luster covering the protected areas on both sides. MDS showing a strong arc of impressed dentils (in the die) above ONE.

380. 1835 N-18 R4+ F12. Sharper by at least 10 points but there is a collection of tiny pinpricks on the neck, a dull scratch along the front edge of the neck, another along the top of the head, and tiny planchet lamination flakes scattered over the reverse (as struck). Glossy chocolate with medium brown toning on the highpoints, possibly retoned long ago.



381. 1835 N-18 R4+ G6. Glossy bluish steel and light olive brown, probably lightly cleaned. Smooth except for a shallow scrape at EN in CENT. The date and legends are complete and clear. Ex Tom Reynolds 9/87-2003 EAC Sale, McCawley & Grellman Auctions 4/26/03:687.



382. 1836 N-7 R4 EF40. Five points sharper but there are a couple splashes of dark olive toning on the reverse, the larger one at TATES. Otherwise this piece is a very attractive glossy light chocolate and medium brown with underlying frosty mint luster covering the fields and protected areas. E-MDS. The die crack at D-ST is faint.



383. 1836 N-7 R4 VF25. Slightly sharper but the obverse suffers from a dark stain that covers about half of that side. The remainder of the planchet is an attractive glossy light chocolate and steel brown. Just a few trivial nicks plus a small planchet flake on the rim at star 12. MDS with a clear die crack at D-ST but before the rim cud at D-STA.



384. 1837 N-2 R2 AU55. Plain Hair Cord. Lustrous light chocolate blending to lighter steel brown in the fields and protected areas. The only mark is a tiny streak of olive brown toning left of star 5. MDS with a slightly raised retained cud break between the parallel die cracks up from star 4.

385. 1837 N-9 R1 VF35. Beaded Hair Cord. Attractive glossy chocolate brown with frost in protected areas. A light rim bruise at ER in AMERICA is the only defect. MDS with several fine die cracks on the obverse. Ex John Ward, Jr.



386. 1837 N-13 R2 NGC graded MS62 Brown. Plain Hair Cord. Frosty olive and dark steel brown with traces of mellowed mint red remaining on both sides. The only marks are a couple tiny ticks on the cheek right of the lower lip and a tick on the upright of the E in AMERICA, and these are visible only with the aid of a strong glass. This cent is essentially flawless except for a layer of oxidation that obscures the underlying luster. MDS. The field outside the wreath is covered with fine radial flowlines but the repunching on the N in UNITED remains clear. Our grade is MS60.



387. 1837 N-15 R3 ANACS graded EF40. Plain Hair Cord. Glossy light to medium brown. The notable defects are a blob of crud or verdigris over star 6 and a bit more dusted around the berry over the N in ONE. This stuff appears removable, but you never know for sure until you try. MDS with a faint die crack up from the upper point of star 4 in addition to the stronger one passing through its left point. Our grade is VF25+.



388. 1837 N-16 R3 AU50. Plain Hair Cord. Frosty steel brown and chocolate with traces of lustrous golden tan in protected areas. There is a subtle splash of reddish chocolate toning between stars 5 & 6, a bit of coppery toning on the top of the hairbun, and a small planchet chip out of the chin. MDS. Comes with an impressive provenance. Ex Thomas L. Elder 7/2/15:980-Henry C. Hines-Willard C. Blaisdell 10/28/49-1977 EAC Sale, lot 283-Lillian S. Willins, 1980 EAC Sale, lot 223 (graded AU55 in both EAC Sales)-John Ward, Jr.



389. 1837 N-17 R4 MS60. Plain Hair Cord. Frosty light olive and chocolate with traces of very faded mint color bleeding through on both sides, especially on the reverse. Virtually flawless. The best identifying marks are a microscopic planchet flake under star 13 and a collection of even smaller ones near the dentils above star 12 (all as struck). E-MDS with a small rim cud break at star 5. Called MS60 and tied for CC#3 in the Bland census. Noyes says MS60 and tied for CC#3 as well, his photo #25841. Removed from an NGC slab graded MS65BN (NGC label included, and it shows the attribution and Rasmussen pedigree). A great cent that comes with an impressive provenance. Ex a 1929 Thomas L. Elder auction-Henry C. Hines-Numismatic Gallery-Floyd T. Starr, Numismatic Gallery 1949 ANA Sale, 8/49:1723-Federal Coin Exchange 5/56:366-Floyd T. Starr, Stack's 6/13/84:352-Wes Rasmussen, Heritage 1/13/05:3691.

390. 1837 N-17 R4 F12. Plain Hair Cord. Slightly sharper with a few too many tiny contact marks for the higher grade. A thin nick off the bust tip and a small spot of dark chocolate toning on the bust truncation are good identifying marks. Glossy light olive with steel brown highpoints. E-MDS with a small rim cud break at star 5.

391. 1838 N-1 R1 MS63+. Lustrous mint red fading to steel brown on the devices, more than a third of the frosty original mint color remaining. A choice cent void of distractions. E-MDS with narrow rim cud breaks at stars 6-7.5.



392. 1838 N-1 R1 AU50. Laminated Planchet. Lustrous chocolate brown with frosty lighter brown toning covering the protected areas. A planchet lamination affects the rim at stars 4-6 and over ITE in UNITED. Otherwise there are no defects, only very light friction on the highpoints. MDS showing several thin rim cud breaks on the obverse. Removed from an NGC slab graded MS63BN (NGC label included, and it mentions the "Obverse Lamination Mint Error.")



393. 1838 N-5 R1 VF30+. Accessory N. Nice glossy chocolate brown. The only notable mark is a minor rim bruise under the second 8 in the date. MDS. A trace of the "Accessory N" hidden in the leaves under the N in UNITED is visible. Ex McCawley & Grellman Auctions 9/13/97:571.



394. 1838 N-8 R1 AU55. A mint state cent that suffers from a flaked planchet lamination at the dentils under star 11 plus a couple smaller planchet flake voids at stars 4 & 8. A dull arcing nick at the left point of star 12 and a couple small spots of dark olive toning are the only additional marks. Lustrous steel brown and chocolate with hints of very faded mint color peeking through on the reverse. Struck with a very minor planchet clip that weakens the dentils under star 9 and the opposing ones at IC in AMERICA. LDS.

395. 1838 N-11/13 R4 F15. Glossy chocolate brown, a shade or two darker in the protected areas than on the devices. Smooth and attractive for the grade, just a few trivial contact marks from choice. LDS with a strong cud break at stars 1-2 nearly touching star 1, Newcomb's #13.



396. 1838 N-14 R4 VF25. Glossy chocolate and steel brown, the reverse delicately woodgrained with slightly lighter and darker shades. Close to choice, just a couple trivial contact marks from flawless. A dull contact mark on the left foot of the T in CENT is a good identifying defect.

397. 1838 N-14 R4 VG8. Sharpness F12 but cleaned in a mild acid bath, now retoned a blotchy mix of brown, chocolate, and olive. A few minor signs of contact including a very light rim bruise right of star 8. Nothing special except for the die state, which is extremely rare. M-LDS with dentil fusing at stars 7-8 but without the large cud break at star 6.



398. 1838 N-15 R5- NGC graded VF25. Sharpness VF25 but lightly cleaned and retoned glossy brown and chocolate with steel brown toning on the highpoints. Traces of very faded red peek through in some of the protected areas; otherwise the retoning would be virtually impossible to detect. No spots, stains, or notable contact marks. The attribution points are clear. Our grade is net VF20.



399. 1838 N-15 R5- G4. Sharpness F12 but moderately rough and there is a scuff of light hairline scratches across the date. No additional defects, but this one is rather ugly. Dark olive and steel with lighter steel brown and reddish chocolate highpoints. The attribution points are clear but not strong.



400. 1839 N-7 R2 EF45. Booby Head. Slightly sharper but possibly retoned. Frosty light greenish olive. No marks or other defects. Nicely struck E-MDS with clearly defined dentils on both sides and the reverse as yet unclashed.

The 2010 EAC Convention Sale, April 24, 2010

401. 1839 N-8 R1 G6. Head of 1840. Off Center. Sharpness a bit better but there are dull digs on the cheek and the surfaces are not perfectly smooth. Glossy chocolate and olive brown. LDS with a clear rim cud below the 839. Struck 5-10% off center to K-12.



402. 1839 N-12 R4 PCGS graded XF40. Booby Head. Frosty chocolate and steel. The surfaces are excellent, void of any notable marks. A faint vertical planchet void at the left edge of the 3 in the date is a good identifying mark. I suspect a proper brushing would bring out more of the natural luster and make this cent even more attractive. MDS. The die crack from the rim through star 4 to the nose is clear. Our grade is VF30.



403. 1839 N-13 R2 AU55. Booby Head. A mint state cent that has splashes of lacquer on the obverse. Traces of microscopic verdigris or crud show in protected areas around the coronet tip and there is some roughness on the coronet over LI. The reverse is flawless. Lustrous bluish steel and olive brown with generous traces of mellowed mint color remaining on the obverse. MDS.

404. Group of 10 Cents, 1816-1826. Grades range from Fair-2 to G5, average AG3. Readable dates. Lot of 10 coins.

405. Group of 7 Cents, 1827-1839. Grades range from AG3 to VG8, average G5. One is counterstamped. All have a readable date. Lot of 7 coins.

406. 1840 N-12 R1 PCGS graded MS63 Brown. Small Date. The obverse is an attractive sea-green and light bluish steel brown, a classic "Greenie." The reverse is a more common frosty light steel brown with subtle hints of bluish steel overtone in the fields. Sharply struck and quite attractive. A small swipe of darker olive brown toning at the ER in AMERICA is the only notable mark. EDS, die state a, with a small but clear lump defect under the base of the 1 and fine die lines over NITE in UNITED and ER in AMERICA. This is the Newcomb-12 die state for these dies. Called AU55 and tied for CC#4 in the Noyes census, his photo #30973. Our grade is MS60, tied for CC#4 in the Grellman census. The attribution and Naftzger provenance are noted on the PCGS label. Ex Ray Gallo 11/1960 (via Abner Kreisberg)-R. E. Naftzger, Jr., McCawley & Grellman Auctions/Goldbergs 9/7/2009:620.

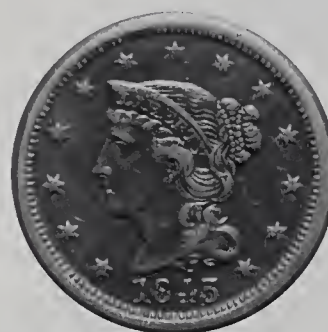


407. 1841 N-7 R2 PCGS graded MS65 Brown. Frosty light chocolate brown with subtle overtones of light bluish steel and generous traces of original mint color remaining on both sides. Satiny mint luster covers the surfaces and the eye appeal is excellent. No spots or roughness, only a few trivial contact marks, including a couple in the field close under the chin and another very faint one near the dentils left of the date. MDS, die state a. The small lump defects under the 1 & 4 are visible and the obverse die is uncracked. A couple shallow low spots (caused by debris on the die) are located at ON in ONE. Our grade is MS60+, tied for CC#7 in the Grellman census. Ex Roy Harte, Bowers & Ruddy 1/25/83:616-Michael Graham ("Mr. 1841")-Doug Bird 8/96-Wes Rasmussen, McCawley & Grellman Auctions/Superior 2/8/98:25.

408. 1843 N-4 R1 PCGS graded MS65 Red & Brown. **Petite Head with Reverse of 1844.** Frosty steel and olive brown fading down from mint color, about a third of the red remaining. Great eye appeal with only a couple tiny identifying marks. These include a tiny planchet flake on the tip of the chin and a small spot of dark olive toning on the inner curl. LDS, die state d (Newcomb's old #13). Our grade is MS64, tied for CC#5 in the Grellman census.



410. 1843 N-17 R5+ VF30. Mature Head. Sharpness AU50 or slightly better but some of the obverse details have been very skillfully strengthened. This includes the hair under LIBE, the ear, the curl on the neck, and the radial lines in all the stars. Otherwise this cent is very nice. Glossy light olive brown and chocolate. EDS. Tied for CC#3. Ex Bowers & Merena 6/96:151.



411. 1843 N-17 R5+ VF20+. Mature Head. Sharpness ten points better but there is extremely faint roughness hidden under the glossy dark chocolate and olive brown patina. No verdigris, but there are some light contact marks on the cheek, neck, and in the field off the chin. The "roughness" may be microscopic crud that would melt away during a good bath. If that happened I suspect the net grade would improve, but there's always some risk involved. CC#6 as it is right now.

409. 1843 N-9 R2 NGC graded MS64 Brown. Repunched 843. Lustrous light olive and sea green with subtle overtones of light bluish steel. The surfaces are satiny and the eye appeal is excellent. A couple very light contact marks in the field before the nose and a small spot of dark toning right of the inner curl are the best identifying marks. LDS, die state c, with a couple small rim cud breaks at star 1 and another over the U in UNITED. Our grade is MS60+, tied for CC#3 in the Grellman census. Ex Doug Bird 6/9/88-Wes Rasmussen, McCawley & Grellman Auctions/Superior 2/8/98:45.



412. 1844 N-1 R1 NGC graded AU58. Somewhat frosty medium brown and chocolate, the highpoints a few shades darker than the fields. No notable defects, but this cent could use a bath to remove specks of crud from protected areas. MDS, die state c. Our grade is not EF40+, close to EF45.



413. 1845 N-1 R4 VF25. Sharpness EF45 but there are 5 rim nicks on the reverse and this cent has been retoned dark bluish steel and olive brown with subtle reddish chocolate stains on the obverse. No additional defects, and the surfaces are smooth. Nicely struck MDS, die state b, showing full radial lines in all the stars.



414. 1845 N-2 R1 PCGS graded MS64 Brown. Attractive lustrous frosty bluish steel and light chocolate brown. Traces of mint red remain on both sides, mostly on the obverse. The only marks are a faint speck of carbon or dirt right of star 2 and a barely visible pinprick on the upright of the 4. Sharply struck EDS, die state a. Our grade is MS60+, tied for CC#5 in the Grellman census.



415. 1845 N-5 R1 AU50. Misaligned Dies. Frosty bluish steel and olive brown with traces of faded mint color on both sides. A light diagonal nick in the center of the neck and a speck of greenish verdigris in the dentils below star 12 are the notable marks. Nicely struck EDS, die state a. The obverse is slightly misaligned to K-1.5.

416. 1845 N-13 R2 PCGS graded MS64 Red & Brown. Frosty chocolate and steel brown with at least a third of the mint color remaining, mostly on the reverse. The only marks are a tiny speck of greenish crud (possibly removable) at the bust tip and a small spot of darker chocolate toning under the left foot of the A in STATES. MDS, die state a. Our grade is MS63, tied for CC#2. Ex Stack's 7/27/08:1139.



417. 1846 N-1 R1 PCGS graded MS62 Brown. Repunched 18. Glossy greenish olive fading to darker greenish olive brown in protected areas, a classic "greenie." There are a few tiny peeps of faded mint color visible on both sides. The only contact marks are a trio of tiny ticks in the field under the chin. Rare LDS, die state d, with extensive die cracks connecting the date and stars, plus an additional die crack that connects the inner points of stars 9 & 10. Called MS60 and tied for CC#8 in the Noyes census, his photo #31105. Our grade is MS60, tied for CC#12 overall in the Grellman census but second finest of the late state. The attribution and Naftzger provenance are noted on the PCGS label. Ex Henry Chapman 12/19/1927:899-Henry C. Hines 10/28/49-Willard C. Blaisdell 9/76 (via Del Bland)-R. E. Naftzger, Jr., McCawley & Grellman Auctions/Goldbergs 9/7/2009:705.



418. 1846 N-6 R1 EF45. Repunched 46. Five points sharper but there is a spot of darker toning at the dentils under the date, and this spot has been lightly abraded with a pin to lighten the toning. Otherwise there are only a few minor marks and the eye appeal is quite nice. Glossy medium brown and light chocolate with flowline luster covering the fields and protected areas. LDS, die state c. The repunching under the 4 is faint but the repunching under the 6 remains easily visible.



419. 1846 N-19 R4 NGC graded MS62 Brown. Frosty steel brown with subtle hints of light bluish steel overtone on the reverse and mellowed mint red covering the protected areas on both sides. The notable marks are a small spot of chocolate toning right of star 3 and a faint splash of slightly darker brown toning on the cheek, plus a shallow nick right of the eye. Sharply struck EDS, die state a, before any die cracks on the reverse. Our grade is MS60.



420. 1846 N-19 R4 EF40. Choice glossy chocolate brown. A beautiful cent for the grade, virtually flawless. Sharply struck EDS, die state a, before any die cracks on the reverse. Ex Bob Grellman-March Wells, 1999 EAC Sale, lot 578-Rod Burress.



421. 1846 N-26 R5 VF25+. Tall Date with Repunched 1. Close to VF30 but there are a few too many light contact marks on the obverse for the higher grade, including a thin nick on the throat at the jawline. Glossy chocolate brown with darker chocolate toning in protected areas. There is some dirt caked into protected areas, and the eye appeal of this cent may improve following a decent bath. But it is rather nice as is. M-LDS, die state c. The head of the spike right of E in ONE remains visible but the tip under the M is gone. Tied for CC#4.



422. 1846 Contemporary Counterfeit VG7. Glossy medium brown and light chocolate. The surfaces are smooth with only minor defects. The reverse is nearly upset rotated 170 degrees clockwise. Weight 135.9 grains. At least 10 are known, possibly as many as 12. While the famous 1848 "Small Date" counterfeit cents were struck using handmade dies, these 1846 cents appear to have been struck using dies made from a genuine 1846 cent. Unfortunately the transfer is relatively mushed out so I have been unable to identify the die variety(s) used. Or, perhaps these were scrap dies employed in the Mickley tradition following extensive burnishing that blunted the details. Regardless, they are neat.



423. 1847 N-8 R3 AU50. Glossy chocolate and steel brown with a hint of reddish chocolate at stars 7-10 and faint peeps of faded mint color can be found on the reverse. A few very faint hairline scratches are located in the reddish chocolate area at stars 7-10. Very rare LDS, die state c, with a clearly defined rim cud break at the first A in AMERICA. CC#5 of only 6 known with the single cud break.

424. 1847 N-8 R3 VF20. Sharpness AU50 but the surfaces are a bit uneven thanks to an acid bath, and the surfaces have been burnished to minimize the roughness. Nicely retoned glossy chocolate brown. Rare terminal die state (d), with small but clearly defined rim cud breaks at the O in OF and first A in AMERICA. CC#9 of 9 examples confirmed with both cuds.

425. 1847 N-26 R3 F15. Slightly sharper with some light nicks on the cheek and a rim nick under the 7. Glossy chocolate brown. LDS, die state e, with a clearly defined rim cud break at OF-A, and the right end of this cud slants up to the right.

426. 1847 N-28 R3+ AU50. Sharpness close to mint state but lightly cleaned and retoned frosty dark steel and olive with faded red covering the protected areas on both sides. The only marks are a dull pinprick on the tip of the chin, an extremely shallow planchet flake in the field under the left point of star 8, and a barely visible rim bruise at star 13. This cent offers mint state eye appeal. Extremely rare LDS, die state d, with a small but clearly defined rim cud break above AT in STATES. Tied for CC#13 overall for the variety but is the finest of only 3 known with the single rim cud break. This cent is the discovery coin for the die state. Ex 1991 FUN Sale, Mid American Rare Coin Auctions 1/4/91:71.



427. 1847 N-36 R5+ F15. Sharpness EF40 but covered with uniform fine granularity mixed with microscopic porosity. No spots, stains, or contact marks other than a thin diagonal nick on the rim over star 7. Chocolate and olive brown. The attribution points are clear. Tied for CC#12.



428. 1847 N-37 R1 PCGS graded MS64 Red & Brown. Frosty steel and light olive brown with more than a third of the mint red remaining. Excellent eye appeal showing only a few trivial marks. These include a microscopic speck of carbon close above star 13 and a dull nick on the throat. MDS. Our grade is MS63+, CC#2 of only 5 mint state pieces known in the Grellman census. This relatively common variety is a challenge to acquire in true mint state grades. The only better one (and arguably so) is the MS64 piece offered as lot #814 in our Sept 2009 sale of the Naftzger collection of late date cents (where it brought \$3105). The three remaining mint state pieces are only MS60 showing very little mint color. Ex 1991 EAC Sale, lot 330.

429. 1847 N-38 R1 MS60. Lustrous light olive and chocolate brown with generous traces of slightly faded mint color showing on both sides. Choice and mark free except for a collection of tiny ticks on the cheek and another at the tip of the nose. LDS, die state d (Newcomb's old #16).



430. 1847 N-39 R3 EF40. Sharper by nearly 10 points but there are a few tiny spots or stains on the reverse, and the ones over the D and M have been very lightly abraded. None of these spots or the abrasions is distracting, but they count anyway. MDS, die state b.

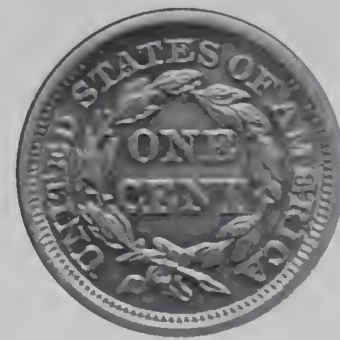


431. 1848 N-3 R2 PCGS graded MS64 Brown. Repunched Date. Lustrous bluish steel and olive brown with 10% of the mint color showing, mostly on the reverse. The surfaces are satiny and the eye appeal is very nice. This cent is choice except for a few trivial marks, including a dull nick in the center of the eyebrow, a very faint hairline between stars 5 & 6, and a shallow planchet void in the field close off the tip of the chin (as struck). EDS, die state a. The die lines from the dentils at stars 1-2 are dull but clearly visible and sharp repunching shows on all 4 digits of the date. Our grade is MS62, tied for CC#4 in the Grellman census. Ex Chris McCawley-McCawley & Grellman Auctions 9/21/91:124.

433. 1848 N-4 R4+ PCGS graded MS63 Brown. Repunched Date. Frosty light olive and chocolate with 5% of the mint color remaining on the obverse, 25% on the reverse. Excellent eye appeal and only a few marks, including several tiny pinpricks at the coronet tip to near the dentils left of star 6 and a spot of very fine reddish olive corrosion on the leaf under E in UNITED. MDS, die state b, with repunching still visible on all 4 digits in the date. Our grade is MS60, tied for CC#2 in the Grellman census. Only 4 mint state examples of this variety are known, so this is one of the tough ones.



432. 1848 N-3 R2 MS60. Repunched Date. Frosty chocolate and light steel brown with traces of mint color remaining on the reverse. Virtually flawless, a tiny nick over star 12 is the only notable mark. LDS, die state c. The repunching remains visible on all 4 digits. Tied for CC#8 in the Grellman census.



434. 1848 N-6 R1 AU50. Lustrous chocolate brown with overtones of sea green and light bluish steel, very close to what Doug Smith loved to call a "Greenie." I can find no evidence that this cent has ever been cleaned or retoned: Beautiful? I suspect it's a matter of taste. Anyway, the only mark is a tiny bit of reddish olive toning at IB in LIBERTY. M-LDS, die state d, with a slightly raised retained cud break over MFRI.



435. 1848 N-11 R5 VF35. Ten points sharper but there is a bad stain from star 1 to the neck, and this stain has some very shallow scale or crud attached (possibly removable). The remainder of the planchet is a very attractive frosty brown and chocolate, virtually flawless, which makes the stain even more noticeable. Rare terminal die state (e) with strong rim cud breaks at D-S and TES. CC#7 of 15 examples confirmed in this die state.



438. 1848 N-17 R1 EF40. Slightly sharper with a splash of reddish chocolate toning close under the outer hairbun and a smaller one at the dentils under star 12, plus another small one under the T in UNITED. A few nicks on the cheek and neck. Otherwise the surfaces are smooth and offer excellent eye appeal. Glossy medium brown with frost in protected areas. MDS, die state b. Repunching is clearly visible on the 4.



436. 1848 N-13 R4 VF30+. Sharpness EF40 but lightly cleaned and nicely retoned glossy chocolate and light olive with frosty luster showing in protected areas. No spots or stains, only small nicks located mostly on the cheek and inside the wreath. Nice eye appeal regardless. MDS, die state a.



437. 1848 N-13 R4 VF25. Sharpness EF45 but covered with very fine roughness under a glossy dark olive and steel patina. A small nick in the center of the neck and a couple minor rim nicks on the reverse are the only marks. LDS, die state b, with a strong rim cud over TES.



439. 1848 N-23 R3 AU50. Sharpness very close to mint state but there are three small pinpricks in the field right of the main curl and another less visible one right of the hairbun. Otherwise this cent is beautiful and offers excellent eye appeal. The reverse appears mint state in every respect. Lustrous steel brown and light chocolate with generous traces of mint red remaining on the reverse. MDS, die state a. Tied for CC#9. Ex McCawley & Grellman Auctions 1/6/96:549-R. S. Brown, Jr., McCawley & Grellman Auctions/Superior 6/2/2002:580.



440. 1848 N-25 R4 AU55. Virtually mint state offering very nice eye appeal, but there is a faint pinscratch from the N in CENT down to the tip of the wreath stem. Glossy steel brown and light chocolate with satiny luster covering the fields and protected areas. A bit of darker reddish chocolate toning nestled tight around star 2 and a speck of similar toning over the E in ONE are the only other marks. LDS, die state c. Tied for CC#7. Ex Macallister-Henry C. Hines 1947-Willard C. Blaisdell 9/76 (via Del Bland)-R. E. Naftzger, Jr., 1990 EAC Sale, lot 372-Chris McCawley 6/90-Evan Kopald. Comes with the Hines and Blaisdell envelope fronts in addition to the Naftzger and Kopald envelopes.

441. 1848 N-28 R1 PCGS graded MS65 Brown. Beautiful lustrous bluish steel and olive brown. Satiny mint frost covers the planchet and this cent offers outstanding eye appeal. The only marks, and they are barely visible, are a faint hairline under star 7, a tiny tick near the bun under star 8, and a subtle wisp of darker toning in the leaves under the F in OF. M-LDS, die state c. The obverse fields show faint die lapping lines from NNW to SSE, and the die lines connecting the O in ONE to the E in CENT are gone. Our grade is MS63, tied for CC#4 in the Grellman census. Ex Tom Reynolds 6 21 90-Wes Rasmussen, McCawley & Grellman Auctions Superior 2/8/98:223.



442. 1848 N-32 R5 F12. Glossy chocolate brown, darker in protected areas and lighter on the devices. No notable defects, but there is some dirt in protected areas on both sides. EDS. The always-present die crack on the reverse is faint at S-O. Nice for the grade.

443. 1848 N-33 R5 F12. Sharpness VF20 but cleaned and partially retoned steel brown with ample faded artificial red remaining on both sides. A rim nick at F-A is the best identifying mark.



446. 1849 N-4 R1 PCGS graded MS63 Brown. "Fatboy." Glossy light chocolate and medium brown with mint frost covering the protected areas. The only marks are some dull nicks scattered over both sides, none significant, and a small splash of darker olive brown toning at the top of star 9. E-MDS, die state b. A fine die crack extends from the tip of the leaf under the second S in STATES through the center of the O in OF to the dentils over F. Nothing special except that the planchet is slightly oversize, both in diameter and weight (the so-called "Fatboy"). A limited number of this variety are known struck on these larger planchets, and all are in the same die state. While you can't "feel" the weight difference, you can pick one of these "fatboys" out of a stack of late date cents because of the larger diameter. This one weighs 170.95 grains (vs. the standard of 168 grains) and the diameter is a full 28.0 millimeters. This is the second heaviest example and the fourth finest of the "fatboys" listed in the Grellman census. Noyes photo #55008a. Our grade is EF45. Ex Larry Whitlow 1/90 (via Bob Grellman)-R. E. Naftzger, Jr., McCawley & Grellman Auctions/Goldbergs 9/7/2009:916.



444. 1848 N-34 R5 F12+. Close to F15 but there are a few too many tiny nicks scattered about for the higher grade. A small, dull nick under the hairbun and a tiny rim nick at star 6 are the best identifying marks. Ex Dr. Thomas S. Chalkley, Superior 1/28/90:1018.



445. 1848 N-36 R5 VF30. Ten points sharper with extremely fine roughness well hidden under a glossy chocolate brown patina. The highpoints are a couple shades lighter than the protected areas. The only mark is a shallow horizontal nick in the field off the nose. Excellent eye appeal in spite of the imperfect surfaces. EDS, die state a.



447. 1849 N-20 R1 EF40. Slightly sharper with a few light nicks on the face and neck, the strongest one in the center of the nose. Attractive glossy light chocolate and medium brown with frost in protected areas on the reverse. EDS, die state a. The die lines are sharp on both sides.



449. 1850 N-3 R1 MS62. Lustrous bluish steel brown and olive with mellowed mint red covering 10% of the obverse, 30% of the reverse. The reverse is choice, virtually flawless, but the obverse eye appeal suffers from splashes of lacquer (which should be easily removable). The only other marks are a few faint spots on the obverse, including a speck of carbon near the dentils under star 3 and a small spot of slightly darker toning on the rim under star 13. MDS, die state b. Tied for CC#7.



448. 1849 N-22 R1 PCGS graded MS64 Red & Brown. Lustrous mint red mellowing to steel brown, 80% of the red remaining on the obverse, 20% on the reverse. This cent is a gem except for a few tiny carbon spots on both sides. The notable ones are on the front edge of the neck, in the field just left of the date, inside the bottom of the U in UNITED, and in the dentils over the left edge of the second T in STATES. None of these tiny spots is distracting, but there are too many to keep this cent at "Gem" status. M-LDS, die state c, the usual hoard die state. The die lines from the inner and main curls are gone (Newcomb's old #6). Our grade is MS64, tied for CC#4 with at least a dozen more in the same die state. (Interestingly, most of the nice ones show more red on the obverse than on the reverse suggesting they were stored in a similar manner before dispersal long ago). Ex Larry Whitlow 1/90 (via Bob Grellman)-R. E. Naftzger, Jr. (via Bob Grellman)-Chris McCawley-Dr. Bob Shalowitz.

450. 1850 N-13 R3+ PCGS graded MS64 Brown. Frosty light olive brown and chocolate with subtle overtones of light bluish steel and 15% of the mint red remaining, mostly on the reverse. This cent is choice except for a reddish chocolate brown spot in the dentils at star 13 and a microscopic planchet void close below the inner hairbun. Nicely struck rare EDS, die state a. The dash left of the 8 is sharp, the fine die lines from the dentils under the date and adjacent stars are clear, and the reverse is uncracked. Our grade is MS62, tied for CC#3 of only 6 mint state examples in the Grellman census. Ex Harry Tileston 9/16/90.



451. 1850 N-15 R2 MS60. A choice, attractive mint state cent but there is a light rim bruise at star 5. Lustrous light chocolate and steel brown with 5% of the mint red remaining. E-MDS, die state a.



452. 1850 N-19 R2 MS60. Lustrous steel brown and light chocolate with overtones of light bluish steel in protected areas. Traces of mint color remain on the reverse. A faint splash of slightly darker brown toning at star 6 and a couple extremely faint hairlines in the field under the hairbun are the only marks on otherwise very attractive surfaces. The reverse is choice. LDS, die state b (Newcomb's #16). Ex 1975 EAC Sale, 2/15/75:932-R. S. Brown, Jr., Superior 9/30/86:1246.



453. 1850 N-24 R5 VF20. Sharpness VF25 but there are some light contact marks, including several dull ones over NT in CENT. Glossy chocolate brown with subtle overtones of light bluish steel. The attribution points are clear.

454. 1850 N-25 R4- MS60. Lustrous steel brown and light chocolate with subtle hints of bluish steel overtone. The surfaces are satiny and virtually flawless except for the field around stars 4-8, which is a bit dull by comparison. The best identifying marks are a couple areas of darker toning on the rim at stars 9 & 10. MDS.



455. 1850 N-27 R4 VF30. Sharpness AU50 but there are scratches in the curls right of the neck and the planchet is covered with a light dusting of microscopic verdigris, possibly removable. Slightly glossy chocolate and light olive with hints of light bluish steel overtone. The attribution points are clear.



456. 1851/81 N-3 R1 NGC graded Unc Details, Environmental Damage. Repunched date, 1851 over inverted 1851. Frosty medium brown and light chocolate with traces of faded mint color showing in protected areas. A splash of darker olive and chocolate toning covers the eye and nose and extends into the field to the right point of star 4, and this splash contains traces of very shallow verdigris. Otherwise this cent offers nice eye appeal and the reverse remains choice. Sharp EDS, die state a. Die lines cover the fields on the lower half of the obverse and the 51 over 81 (inverted 18) feature is sharp. Our grade is AU58 sharpness net AU50. The attribution is noted on the NGC label.



457. 1851 N-5 R2 PCGS graded MS63 Brown. Lustrous medium brown and light chocolate with hints of very faded mint color peeking through in a few places. No defects, but there is a hint of rub on the highest points of the design. MDS, die state a. Our grade is AU58.



458. 1851 N-14 R2 EF45 but weakly struck. Glossy chocolate brown with traces of faded mint color showing on the reverse. A splash of darker olive brown toning covers the O in OF. M-LDS, die state b late. This cent was softly struck resulting in significant loss of detail on both sides. The planchet weight is 165.0 grains, which is within range of the 168 grain standard, so the weakness must be from improper settings in the press. I have seen a few of this variety struck similarly.



459. 1851 N-19 R3 NGC graded MS65 Brown with a "Star" designation. Highly lustrous bluish steel brown and chocolate with a few peeps of faded mint color on the obverse. The only marks are a tiny vertical nick on the jaw over the throat, a small spot of greenish crud in the dentils over the T in UNITED, and a tiny speck of carbon inside the C in AMERICA. MDS, die state c. The repunching on the second 1 is dull but still visible. Our grade is MS62+, close to MS63. = CC#7.



460. 1851 N-26 R4 PCGS graded MS65 Brown. Very attractive frosty bluish steel and chocolate brown with traces of mellowed mint color on the obverse and 10% of the reverse showing mint red. Satiny mint frost covers the planchet, even the highest points of the design. Only a few microscopic marks, none visible without the aid of a strong glass. These include a speck of dark toning closes off the bust tip, a small nick on the coronet over the I in LIBERTY, and a very tiny planchet flake on the nose above the nostril. M-LDS, die state c. The points from the main curl over the inner curl are gone. Our grade is MS63, tied for CC#2 in the Grellman census. Ex Robert D. Rector 8/90 (via Bob Grellman).



461. 1851 N-40 R5+ F12+. Close to F15 but there are some small nicks on the portrait, none notable. Glossy light olive and chocolate with a hint of reddish brown toning at LIB to star 7. Shallow low spots (from debris on the dies) show on both sides, as usual on this die variety.



462. 1852 N-8 R2 MS63. Lustrous mint red fading to steel and olive brown, more than half the mint color remaining. The only marks are a few specks of darker toning in the dentils right of star 8 and a splash of lighter brown toning at the 52 in the date. LDS, die state d. The obverse and reverse die cracks are fine but clear and a very shallow low spot covers most of the neck, as usual.



465. 1853 N-3 R1 MS62. Lustrous mint red fading to chocolate and steel brown, half the original red remaining. This cent is choice except for some natural oxidation at stars 1-3; otherwise the grade would be a point or two higher. The reverse is flawless. MDS, die state b. Tied for CC#10 in the Grellman census.



463. 1852 N-11 R1 AU58. Lustrous medium brown and light chocolate with traces of faded mint color on the reverse. Some darker toning on the first S in STATES is the best identifying mark. Has mint state eye appeal. EDS, die state a.



466. 1853 N-7 R2 PCGS graded MS64 Red & Brown. Lustrous mint red fading to steel brown on the highpoints, at least three-fourth of the mint color remaining. The only defects are a few microscopic specks of darker toning on both sides and an extremely faint scuff that barely alters the mint frost under star 7. The notable specks are under the left edge of the 5, above the right top of the U in UNITED, and near the wreath below the right side of the N in CENT. MDS, die state b. The fine die lines at the inner curl are gone but the line from the dentils under the 8 remains clear. Our grade is MS64, tied for CC#3 in the Grellman census. Ex Jonathan Kern 9/7/89.



464. 1852 N-23 R5 VF25. Five points sharper with some tiny contact marks on the obverse, including a pinprick in the hair over the E in LIBERTY and a small rim nick under the 2. Glossy medium brown and light chocolate with a couple subtle splashes of reddish brown near star 2. LDS, die state b, with a strong rim cud break at the bottom of the reverse. Tied for CC#8 of those known with the single reverse cud.



467. 1853 N-19 R1 AU58. Repunched 853. A lustrous mint state cent that has several dull nicks on the rim at star 3 and a few more thin nicks in the field under the chin, plus a small nick on the upper point of star 2. Very attractive lustrous steel brown and light chocolate. EDS, die state a, with sharp repunching visible under the 853.



468. 1853 N-19 R1 MS60. Misaligned Dies. Lustrous bluish steel brown and chocolate with traces of faded mint red on both sides. There are some light contact marks on the cheek and a thin nick on the rim over the C in AMERICA. LDS, die state c, with the obverse misaligned to K-9.



469. 1853 N-25 R1 PCGS graded MS64 Brown. Repunched 1. Lustrous bluish steel and light olive brown with traces of faded mint color on the obverse and 15% of the mint red showing on the reverse. The surfaces are satiny and attractive. A spot of darker toning in the dentils over the E in STATES is the best identifying mark. MDS, die state b. Our grade is MS62.

Early Die State 1853 N-27



470. 1853 N-27 R2 MS60+. Misaligned Dies. Lustrous steel brown and light chocolate with faded mint red showing in protected areas. A very attractive cent, nearly flawless except for a very shallow low spot covering much of the neck and similar low spots inside the wreath (from debris on the dies). EDS, die state a. The obverse is misaligned to K-4.5 while the reverse is properly centered on the planchet. CC#7 in the Grellman census.

Late Die State 1853 N-27



471. 1853 N-27 R2 MS60. Misaligned Dies. Glossy chocolate brown with a couple splashes of darker olive brown toning on both sides. No contact marks and the fields are covered with flowline luster. LDS, die state d, with a thin but clearly defined rim cud break at star 3. The obverse is misaligned to K-3. Ex Del Bland 4 29 75-Jules Reiver (Jules' envelope identifies this as the discovery piece for the die state, and the envelope is included).



472. 1853 N-28 R4- AU55. Glossy steel brown and chocolate with flowline luster covering the fields and protected areas on both sides. Excellent eye appeal, virtually flawless except for a pair of extremely faint hairlines on the jawline. Looks mint state. LDS, die state c. Ex 1998 EAC Sale, Lot 463.



473. 1853 N-32 R4+ PCGS graded AU50. Dull medium brown delicately mottled with reddish chocolate and olive brown. Some dull nicks on star 10 and a thin swipe of olive toning down from the E in STATES are the best identifying marks. This cent screams to be cracked and brushed. EDS, die state a. The die lines on the reverse are sharp. Our grade is EF45, tied for CC#6 in the Grellman census.



474. 1854 N-2 R1 EF45. Attractive glossy medium brown and light chocolate. Choice and virtually flawless except for a spot of dark olive toning with fine carbon at the bottom of the reverse. LDS, die state c.



475. 1854 N-3 R1 NGC graded MS63 Brown. Glossy chocolate brown with generous traces of faded mint red on the reverse. Just a touch of friction on the highest points from mint state. A rim nick at the C in AMERICA is the only defect. EDS, die state a. Our grade is AU55.



476. 1854 N-5 R3 PCGS graded MS65 Brown. Lustrous bluish steel brown and light chocolate with traces of mint red showing on both sides. The surfaces are satiny and essentially void of defects. Some slightly darker toning above and below the O in OF can help identify this cent. M-LDS, die state c. The repunching over the 8 is dull but remains visible and the die clashmarks at the left top of the O in ONE are gone. An extremely shallow low spot covers the face and neck (caused by debris on the die). Our grade is MS62+, close to MS63, and CC#4 in the Grellman census. Housed in one of those first generation PCGS slabs with a green label.

477. 1854 N-9 R2 VF35. Dartboard Obverse. Sharpness at least AU50 but there are small splashes on both sides, and these splashes areas contain traces of raised verdigris. A speck of greenish verdigris is at the mouth while darker olive verdigris is located at UNI and over ME. The planchet is mostly lustrous steel brown and light chocolate while the splashes are a darker shade of olive and reddish chocolate. M-LDS, die state e. The stray 1 in the right side of the ear is bold.



478. 1854 N-11 R2 MS60. Lustrous olive brown and bluish steel with lighter chocolate toning covering the neck. The only mark is a tiny planchet crease on the rim at CA in AMERICA. M-LDS, die state e. The fields on both sides are covered with radial die flowlines. Ex McCawley & Grellman Auctions 1/7/95:717-R. S. Brown, Jr., McCawley & Grellman Auctions/Superior 6/2/2002:1308.



479. 1854 N-21 R2 PCGS graded MS64 Red & Brown. Repunhed 185. Lustrous mint red mellowing to bluish steel and chocolate. Half of the obverse displays slightly faded mint color while faded underlying red shows through on at least a third of the reverse. Just a few trivial marks, all visible only with the aid of a strong glass. These include tiny struck-through voids right of the 1 in the date, on the nose, and in the field off the tip of the nose (all as struck). A nick on the inner point of star 12, a tiny planchet void on the rim over the E in UNITED, and a splash of darker bluish steel toning at F-A are good identifying marks. E-MDS, die state b. The fine repunching under the 185 remains clear and delicate die clashmarks show on both sides. Our grade is MS63+, tied for CC#4 in the Grellman census. Ex Coin Galleries 8/7/85:1658-Tom Reynolds 11/7/87-Wes Rasmussen, McCawley & Grellman Auctions/Superior 2/8/98:460.



480. 1854 N-27 R3- PCGS graded MS63 Brown. Rotated Reverse. Lustrous light bluish steel brown and chocolate with traces of faded mint red on the reverse. This cent is choice except for a very shallow low spot (caused by debris on the die) covering the field before the neck. A nick-like planchet chip close over star 9 is a good identifying mark. E-MDS, die state b. The reverse is rotated 80 degrees CW. Our grade is MS60+, tied for CC#6 in the Grellman census.



481. 1854 Pattern Cent Judd-160 R4 VF35. Choice glossy chocolate brown with frosty lighter brown toning in protected areas on the reverse. A barely visible tick on the rim at IT in UNITED is the best identifying mark on this choice piece. Struck in copper.



482. 1855 N-4 R1 MS60. 5 Rim Cuds on Reverse. Lustrous light olive and chocolate with faded mint red covering the protected areas on the reverse. Outstanding eye appeal for the grade, and you could easily argue for a couple additional points. Flawless except for a few inconspicuous specks of darker toning, including one in the field right of the main curl and another inside the O in ONE. A tiny struck-through void under star 3 is a good identifying mark. Terminal die state with 5 rim cud breaks on the reverse, including the final one over the F in OF. CC#1 of 10 known with all 5 of the cud breaks. Ex Dr. Bob Shalowitz 4/16/89-Wes Rasmussen, McCawley & Grellman Auctions/Superior 2/8/98:476-Chris McCawley 4/99 (via Bob Grellman)-R. S. Brown, Jr., McCawley & Grellman Auctions/Superior 6/2/2002:1401.



483. 1855 N-7 R1 PCGS graded MS63 Brown. Frosty chocolate brown. Slightly dull from a layer of natural oxidation that could be brushed away. The only mark is a dull, faint vertical scratch in the field before the lips. Just a hint of friction on the highest points. E-MDS, die state a. Our grade is AU55.



484. 1855 N-10 R1 Hallmark graded MS63 Brown. Italic 55. Very attractive glossy light chocolate brown with traces of faded mint color on the reverse. The surfaces are satiny and virtually flawless. Minor strike weakness in the dentils at star 11.5 is the best identifying mark. M-LDS, die state e. Our grade is MS60.



485. 1856 N-2 R1 NGC graded MS63 Brown. Frosty steel brown and chocolate with hints of very faded mint color pecking through on the reverse. No defects, just a hint of friction on the highest points. LDS, die state f. Our grade is AU58.

486. 1856 N-3 R1 MS60. Lustrous steel brown and light chocolate with generous traces of mint red on the reverse. The only defects are a soft strike on the coronet tip and opposing ribbon loop plus a few small planchet flakes in the dentils under the wreath ribbon, all as struck. E-MDS, die state d.



487. 1856 N-13 R2 AU58+. Very close to mint state, and the eye appeal is consistent with a mint state grade. Lustrous light chocolate and steel brown with traces of mint red remaining on the reverse. The only defects are a spot of dark olive toning just right of the date and a shallow low spot under the hair buns. E-MDS, die state b. Ex Harry W. Colborn, McCawley & Grellman Auctions/Superior 5/29/05:1990.



489. 1857 N-2 R1+ AU58. **Small Date.** A sharp mint state cent that was lightly cleaned and retoned glossy dark reddish chocolate. No marks or other defects. EDS, die state a.



490. 1857 N-4 R1 ANACS graded EF45. **Small Date.** Glossy light chocolate brown. No notable defects, just lightly worn. MDS (b). Our grade is VF35. The attribution is noted on the ANACS label.



488. 1857 N-1 R1 MS63. **Large Date.** Frosty mint red fading to steel brown and light chocolate on the highpoints, about 75% of the original color remaining. There is more mint color than you associate with an MS63 grade, but the obverse suffers slightly from a few very faint abrasions, including one from the chin to the center of the neck and another close under the hairbun. A spot of chocolate brown toning in the center of the neck and a speck of carbon under the second S in STATES are good identifying marks. MDS, die state b early.

491. **Partial Set of Large Cents 1794-1854 (32 pieces).** Grades range from Fair-2 to VG7; most are AG3. The early dates include one each 1794, 95, 97, 98, 1800, 1803, and 1814. All have a readable date. Housed in 2 albums. Lot of 32 cents.

492. **Group of 4 Cents.** Includes 1800 S-210 obverse with the reverse ground off the planchet G6, 1820 N-14 G4 net Fair-2 for roughness, 1827 N-9 counterstamped AG3, and 1845 N-7 G6. An eclectic group. Lot of 4 coins.

493. **Group of 6 Cents, 1847-1856.** Includes 1847 N-4 VF20, 1848 N-2 F15, 1848 N-9 VF20, 1852 N-1 LDS (old N-2) VF35, 1854 N-27 rare EDS (a) F12, and 1856 N-4 F12. Most are slightly sharper with minor defects. Overall a decent group. Lot of 6 coins.

494. **Group of 10 Cents, 1840-1853.** Grades range from Fair-2 to VG10, average G6. All have a readable date. Lot of 10 cents.

495. 1838 Hard Times Token Low-54 Rulau HT-81 R1 EF40. Choice glossy chocolate brown with frosty lighter chocolate covering the protected areas. A beautiful example of the popular "AM I NOT A WOMAN & A SISTER" token.

496. (1837) Hard Times Token Low-97 Rulau HT-293 R1 MS63+. Frosty mint red fading to steel brown and chocolate. A third of the mint red remains. No defects. A choice, original mint state example of the New York Merchant's Exchange token.

497. 1837 Hard Times Token Low-120 Rulau HT-268 Feuchtwanger's Cent Dies 3-E R3 EF45. Frosty steel gray with lighter silvery gray in protected areas. No defects, only very light wear on the highpoints.

498. Inscribed copy of Penny Whimsy. This is a very special copy that has been signed by over 100 EAC members, **many** of whom are no longer with us. The autographs were obtained over the years by Ed Kucia. Included are Walter Breen, Ted Naftzger, Robbie Brown, Eric Newman, Bill Weber, and Tom Morley (at the 1794 chapter, of course) plus far too many more to list here. An important piece of EAC history, and it's in decent shape (but far from new).

499. Tom Morley's book, 1794 Large Cents Graded and Updated. Hardbound version, autographed by the author. Excellent condition, essentially new.

500. Auction Catalog, Cape Kennedy Medals 20 December 1975 sale of the Tom Morley 1794 Cents. Includes a complete Sheldon numbered set of 1794 cents plus other cents through 1857, total 208 lots. Many lots plated. Prices realized list laid in. Excellent condition, nearly new.

DONATED LOTS

501. Don Valenziano's personal collection of EAC Convention Tokens, 1984-2009. A complete run of counterstamped large cents (the 1984 piece is on a Civil War Token). All are stamped with the year and convention location, and most have "DON" or "DON V" added as well. There is one additional piece stamped "EAC 69" that came to Don from Jules Reiver. This lot of 27 stamped pieces is donated by Shirley Valenziano with **all proceeds to EAC**. Comes with a personal note from Don dated 4/20/04 directing Shirley to make the donation. Obviously he planned ahead.

502. Special Deluxe Hardbound Copy of the 2010 EAC Sale Catalog. One of 5 in leather, signed and numbered. **Donated lot, all proceeds to EAC.**

TERMS OF SALE

1. This is a private sale. Participation is by invitation only and is limited to members of The Early American Coppers Club or invited guests. The auctioneer reserves the right to refuse to honor any bid which, at his sole discretion, he feels is not submitted in good faith. The auctioneer may withdraw any lot, without prior notice, for any reason whatsoever.
2. The highest bidder acknowledged by the auctioneer shall be the buyer. In case of dispute the auctioneer may at his sole discretion reopen a lot. In all cases the auctioneer's decision shall be final and binding on bidders.
3. All sales are payable in U.S. funds immediately upon receipt of invoice unless other arrangements have been made prior to the sale. Lots delivered in state of sale are subject to all applicable state and local taxes unless appropriate permits are on file with us.
4. Postage will be added to the invoice of all successful mail bidders.
5. A 10% buyers fee will be added to all invoices.
6. Please keep in mind this is not an approval sale. All sales are considered final. Sales to the floor may not be returned for any reason save authenticity. Sales to mail bidders are final unless lot proves to have been mis-described.
7. Lots will be available for viewing at the 2010 EAC Convention in Annapolis, MD, or by appointment.
8. Mail bids or phone bids will be accepted up through the day of the sale. All bids will be reduced. Lots will open at one increment above second highest mail bidder. Bidding will proceed as competition dictates with the lot either selling to the floor or to the mail bidder at one increment above the second highest bid.
9. Consignor may bid or place a reserve bid on their own coins. Any coins repurchased by a consignor will be announced as a pass. Principals of the auction firm may consign or may bid on coins in the sale.

MAIL BIDS

Please mail all bids to:

M & G Auction

P.O. Box 161055

Altamonte Springs, FL 32716

Phone 407-682-9592

or Fax to Chris McCawley 214-618-4592

Mail Bid Form

I hereby authorize M & G AUCTIONS to execute the following bid(s) at the auction to be held April 24, 2010.

Please buy the following lot(s) for me at the price(s) not exceeding those shown. The bid(s) is made subject to the "Terms of Sale", and I agree to remit promptly on receipt of invoice or notification that the bid(s) is successful. This signed bid sheet constitutes an agreement between me and M & G AUCTIONS.

NAME _____

ADDRESS _____

CITY _____ STATE _____ ZIP CODE _____

SIGNATURE _____ PHONE () _____

EAC# _____

IF NECESSARY, PLEASE INCREASE MY BID(S) BY:

10% 20% 30% Other _____ %

SPECIAL INSTRUCTIONS:

Please Mail Bids To: M & G Auction • P.O. Box 161055 • Altamonte Springs, FL 32716 • Phone 407-682-9592
FAX 214-618-4592 • Email bids up to the day of the sale to Bob at ljefferys@cfl.rr.com



1818 N-2



1818



1820 N-5



1820 N-13



1837 N-17



1838 N-1



1843 N-4



1845 N-13



1848 N-25



1848 N-28



1849 N-22



1857 N-1





Copyright © 2010



P.O. Box 5250
Frisco, TX 75035
972-668-1575