

\$15.00



**Chris McCawley and Bob Grellman
present**

**The 2012
EAC Convention Sale**

May 5, 2012



1802 S-225



1802 S-237



1802 S-226



1802 S-238



1802 S-228



1802 S-239



1802 S-231



1802 S-242



1802 S-233



1802 NC-1



1802 S-235



1802 NC-2



Chris McCawley - Bob Grellman - Shawn Yancey

present

the

2012 EAC Sale

May 5, 2012, 7:30 p. m.

at the Adams Mark Hotel

120 Church St., Buffalo, NY 14202

Welcome to the 2012 EAC Sale.

This year's sale features an exceptional collection of 1802 and 1803 cents formed by long time PennyWise editor Dr. Harry Salyards. The sale will be held Saturday night, May 5th at 7:30 p.m.. at the Adams Mark Hotel, Buffalo, NY. Lot viewing will be held at the Early American Coppers Coin Convention. We welcome your participation whether in person, by mail, by fax bid, or by email. Please feel free to call Chris McCawley (972-668-1575) to discuss any lot in the sale.

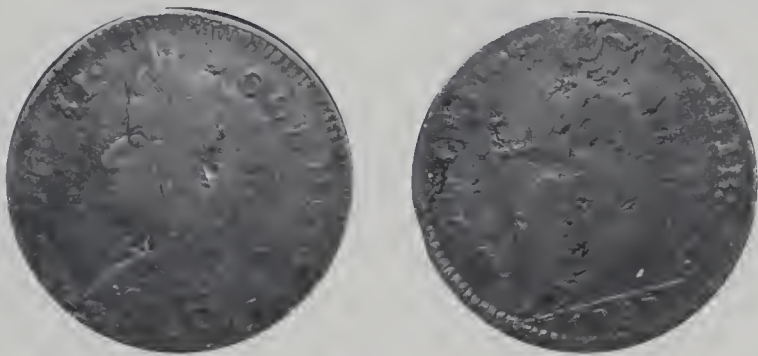
Mail bids should be directed to Chris's address P.O. Box 5250, Frisco TX, 75035. Fax bids: Attention Chris McCawley at hotel fax 716-604--9935. Email bids can be made up to the day of the sale. Email: ljefferys@cfl.rr.com

This is a private sale, you must be a member of EAC to bid - please read our terms of sale before bidding.

COLONIALS

1. 1723 Woods Hibernia 1/2P and 1793 Petersfield 1/2P. The Woods is W13120 with 11 strings and 2 dots reverse, AG3 with all details bold but with minor roughness. The Petersfield is a 1793 Promissory Halfpenny with lettered edge, F15 net VG7 with very light, even porosity but retaining attractive chocolate brown color. Lot of 2 coins.

2. 1786 Connecticut M5.4-G R2 and 1787 Connecticut M37.9-e R6. The 1786 is very dark and glossy with fine underlying roughness, VG10 net G6, ex-Matthews Money Tree. The 1787 is F12 net VG8 for very dark, matte brown color and fine, even porosity. Each coin is mostly free of contact marks. Lot of 2 Coins.



3. 1787 Connecticut M37.2-k.5 R5+. VG10. Very nice color and original surfaces that exhibit several shallow planchet flaws on each side. The date is especially bold, and the overall eye appeal is positive. 137.9 grains.



4. 1787 Massachusetts Cent, G2B, R6+ or R7-. F12+. An extremely scarce variety not listed in Ryder. Solid VF20 with rich dark chocolate brown color and mostly smooth surfaces. There are several tiny rim bumps, none overly distracting, but certainly too many of them to ignore. Well-centered with a nice "look." 150.2 grains.

5. 1788 Massachusetts Cent, Ryder 1-D, Period, R3. VF25. PCGS Genuine. EF40 details with nice chocolate brown color and surfaces that are smooth to the naked eye. There is very fine granularity under a strong glass, netting the EAC grade to perhaps VF25. A shallow planchet flaw on the reverse extends from the second S through the left wing and claw and ends above the 1 in the date. Good eye appeal despite the minor flaws.

6. 1787 Nova Eborac, Seated Figure Facing Left, Breen-98 VG8. A smooth and glossy rich chocolate brown with nice eye appeal. There are a pair of horizontal, linear planchet flaws on the lower reverse, one of which obscures the bottom half of the date. A few scattered nicks but overall very pleasing. Ex-Tor Rinaldo at EAC 2005.



7. 1786 New Jersey, No Coulter, M-11H R6- VG7. A rare variety, this one with medium brown color and VG10 detail but with moderate granularity. No major marks, and all detail including the date can still be made out. 123.4 grains.

8. 1787 New Jersey, Large Planchet Plain Shield, M63-R3. PCGS F12. Details are perhaps a little sharper than F12 but there are a few strong rim bumps that are plainly visible in the PCGS holder, specifically at K5 and K10 obverse and at the corresponding locations on the reverse. The color is an attractive medium brown, and there are no real surfaces marks to speak of. EAC net VG10.

9. 1792-1794 Kentucky Token, Breen 1155, Plain Edge VF35. A lustrous AU50 with several tiny rim bumps all around none too dramatic but too many to ignore. There are also a couple of dull scuffs in the patina on the sunburst side. Medium brown color with nice eye appeal, although the rim bumps do interrupt the symmetry. 153.9 grains.



10. 1794 Talbot, Allum, and Lee Token, with New York. Breen 1032. PCGS AU58. Certainly AU in terms of wear, but probably not enough luster to justify an EAC grade higher than AU50. Really pretty medium brown color on both sides, with a hint of lighter golden highlights at the lower reverse. No signs of contact and perfectly centered.

HALF CENTS

1794 C-2b Ex Roger Cohen



11. 1794 C-2b R6 AG3. Large Edge Letters. Original medium chocolate brown with VG7 details. The obverse is fully VG8, while the reverse is much weaker, perhaps AG3. Both sides are covered with moderate pit marks, heaviest on the obverse, plus there is a small scrape through the 794 in the date extending beneath the bust tip. The large edge lettering is particularly full and bold. Overall a decent example of one of the tough "B-Girls." MDS, 105.2 grains, and the reverse is rotated 25 deg CW. Ex-Roger S. Cohen, Jr. collection, Superior 02/02/92, lot #0015.



12. 1794 C-3a R5 G5. G6 with pleasing light-medium brown color. The obverse is especially nice, showing only a couple of tiny nicks and a pair of dull rim bumps at K5. The reverse, however, has more than a dozen shallow pit marks, hence the G5 net grade. A decent low grade example with nice color. LDS, M2.0; small edge letters; 97.7 grains.



13. 1794 C-5a R4+ VG10. Blundered Edge Letters. VF20 but with shallow black corrosion covering about half of each side, and with a half-dozen dull contact marks on the reverse, most notable at TE and the numerator. The corrosion is a detriment, but it gives the coin a somewhat attractive black and tan cameo appearance. Blundered small edge lettering that reads "TWO HUNDRED A DOLLAR" with the word "FOR" faintly visible beneath "RED." EDS, M1.0, 102.7 grains.



14. 1794 C-7 R5+ AG3. High relief head. Solid G5 details with pretty medium brown color. Unfortunately, the obverse has two strong scratches that cover most of the bust, running from the bottom of the hair diagonally up to the eye and mouth. There are also a half-dozen tiny rim ticks. The reverse is choice but for a TINY rim nick above TA. Late die state, M2.0, with a strong die crack between ED on the reverse. 104.9 grains.



15. 1795 C-1 R2 VF30. EAC Auction 2004, lot 1. From the catalog: "Lightly cleaned, now nicely retoned a glossy reddish medium brown with darker chocolate toning in the most protected areas of the obverse. The surfaces are smooth and notable mark is a very light obverse hairline scratch under the 95 in the date. LDS, Manley state 2.0. Weight 109.9 grains"



16. 1795 C-2b R6+ FR2. Thin planchet with plain edge. VG10 sharpness but heavily damaged and out of round. There is a strong rim pinch at K12 obverse / K6 reverse, plus an area that has been cut behind the hair and through to the reverse. The "cut" is possibly as minted. On the plus side, the coin retains nice color, and all details except the central reverse are still plainly visible. 77.0 grains. Ex-Ron Guth 03/78.

17. Lot of 2 Half Cents. 1797 C-1 R2 smooth and well-worn FR2+, dark and glossy with a full date, late die state M5.0. 1804 C-10 R1 is VF20 net F15 for light even granularity, late die state M3.0. Lot of 2 coins.



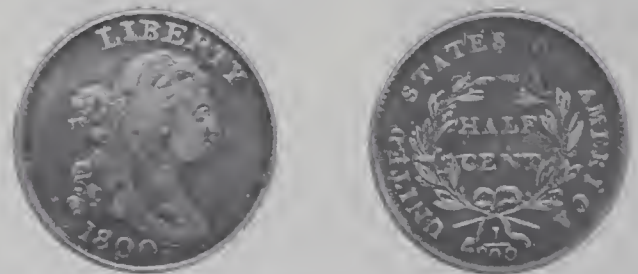
18. 1797 C-2 R3 VG7. Struck over 1794 TAL with New York. Very smooth and pleasing with medium brown color and nice surfaces. The TAL undertype is clear on both sides, but especially bold along the obverse rim K2-K5. Choice for the grade. Ex-Bill Weber, Superior 06/03/02 lot #2274.



19. 1797 C-2 R3 G6. Double Struck with Rotation. Very slightly sharper but covered with extremely fine granularity on all but the high points. No verdigris. The only marks are faint hairline scratches on both sides, all hidden in the slightly glossy chocolate and steel brown toning. Both strikes are fairly well centered on the planchet but the second is rotated 10-15 degrees CCW relative to the first. LIBERTY reads "LIBIBERYTY", there are two strong poles at the bust, and the clearest fraction is offset well to the right. Sometimes referred to as "The Two-Pole Variety." 81.2 grains. Ex- Ron Guth 08/24/77; Davy Collection; Goldberg's / M&G 09/19/10 lot 75.



20. 1797 C-3b R4 VG10. Mint Error. Lettered Edge. VF20 sharpness, but with some heavy red and green corrosion on each side, especially the reverse. The obverse also shows a few very light scratches. Medium brown color, and the date and edge lettering remain clear. Struck 5% off-center to obverse K1, and also struck over a large cent with a clear arc of denticles on the reverse at K1-K3.



21. 1800 C-1 R2 F12+. Sharpness F15 on a dark and glossy planchet. Both sides are covered with many tiny nicks, and there is a faint scratch on the reverse after the final A in AMERICA. M-LDS, M4.0.



22. 1800 C-1 R2 VG10. Double Struck/Reverse Brockage Maker. Glossy steel and light olive brown. No roughness, just a few contact marks. The notable ones are a dull but obvious rim nick before the neck and a short struck-through line (from a short piece of wire stuck to the die or planchet as it was struck) over CA in AMERICA. Double struck. Both strikes were centered on the planchet but it was rotated about 5 degrees between the impressions. The doubling is obvious along the back of the head and from the neck down to the bust. The reverse displays no trace of doubling suggesting the reverse was struck against a new blank planchet creating a reverse brockage. 81.7 grains. Ex-Ed Fuhrman 04/19/06; Davy Collection; Goldberg 09/19/10 lot 109.

23. Lot of 3 Half Cents. 1800 C-1 R2 VG10, F12 details but a blue sheen from an old cleaning, plus some light corrosion on the reverse; M-LDS, M4.0. 1804 C-8 R1 VG8, a Spiked Chin example, and a very attractive and solid VG8; EDS M1.0. 1804 C-10 R1 G6, VG7 details with some light scratches on both sides and some white "soap scum" in the reverse devices, net G6; LDS M3.0. Lot of 3 coins.



24. 1802/0 C2 Electrotpe VF20. A gorgeous, medium tan electrotpe copy. Well-executed, with no base metal showing through on either side and with no obvious seam. Sharpness VF25+ with a pair of light reverse scratches between ME.

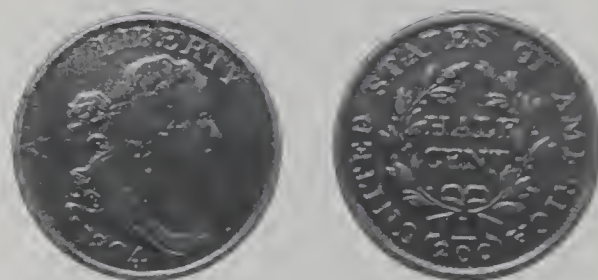


25. 1803 C-2 R4 G5+. A smooth, medium brown example with no real problems. Early die state, M1.0. Ex-Sam Sloat Coins.

26. 1803 C-2 R4 G5. Sharpness F12 but both sides are covered with moderate roughness, partially obscuring the details on each side. The color remains a decent medium brown with a couple areas of green on the reverse. EDS M1.0.



27. 1803 C-4 R4 VF35. Glossy steel brown and chocolate with frosty lighter steel brown in protected areas. Just a few trivial marks, including a thin nick on the 3 and a tiny rim nick off the bust tip. LDS. The reverse is not upset and is rotated only 10-15 degrees CW.



28. 1804 C-4 R5 VG7. Low 4. Dark and glossy with F15 details. Both sides are lightly and evenly porous and the color is very dark. There are also some light scratches hidden in the patina on both sides of the coin, including a notable one from the eye to the rim. EDS, M1.0. Ex-Bill Weber.



29. 1804 C-4 G3/5, LDS. Ex EAC auction 2006, lot 16. From the auction catalog: " Lot #16 1804 C-4 R5 G4. The obverse is barely G4 and could be called AG3 while the reverse is a solid G5 or better. The surfaces are smooth and show only minor contact marks, including a small nick on the first 0 in the denominator. The date is not strong but it is easily readable and the reverse legends are clear. Rather glossy chocolate brown. LDS. Manley state 3.0. A nice lower grade example of this tough die variety." Manley describes this die state as extremely rare.

30. Lot of 4 Half Cents. 1804 C-13 R1 G4. 1804 C-13 R1 AG3. 1809/6 C-5 R1 G5. 1809 C-6 R1 G5. The two 1804's are a little below average but with full dates; the two 1809's are mostly problem-free. Lot of 4 coins.



31. 1804 C-7 VF25 (EAC). Ex Superior, May 25, 2003. plated on page 35 of catalog (lot 190). " Slightly sharper than VF25 with a couple of hairline scratches of OF and a few tiny contact marks scattered about the obverse. Nice glossy chocolate brown, the obverse delicately mottled with some lighter brown tones. M-LDS, Manley State5.0. The cud break at OF-AM is strong. An attractive example for the grade despite the minor marks."



32. 1804 C-9 VF35. EAC auction 2004, lot 35. Description from the catalog: " Glossy chocolate brown. A few light contact marks, including a light hairline scratch across the throat. LDS, Manley state 5.0, with a cud break over RTY and a die crack through the bust tip. Removed from an NGC slab graded EF45 (NGC label included).



33. 1804 C-12 R2 VF35+. Removed from a PCGS EF45 holder and the blue-label insert remains with the coin. Attractive medium chestnut brown color; EF40+ details but net VF35+ due to some VERY light hairlines and tiny contact marks on each side, only visible with a strong glass. E-MDS M1.0; ex-Steve Ellsworth 10/05.



34. 1805 C-2 R5 VG10. Manley Plate coin. Sharpness of VF25+, but the hair has been carefully re-engraved and then the entire coin has been burnished to soften the work. There are no contact marks to speak of, and the coin retains a pleasing medium brown color. This is the exact plate coin in the Manley half cent die state book, page 165.



35. 1805 C-4 R2- VF20. Large 5 with Stems. Dark, glossy brown, and with sharp VF30 details. However, both sides are covered with a plethora of tiny contact marks that are plainly visible to the naked eye. LDS, M2.0; ex-Matthews Money Tree.



36. 1807 C-1 R2 VG10. Mint Error. Details better than F12, with a couple of tiny rim bumps at K2 and K8 obverse. Struck on a stage 1 planchet before the rims were upset, leaving the coin with details blending into the rims on each side. Very dark brown with glossy surfaces; late die state.



37. 1807 C-1 EF 40, REV 25 degrees CCW, Medium tan, light spots, few minor hairline scratches. Sharpness EF 45.



38. 1808/7 C-2 R3 F12. Overdate. An early die state example, M1.0, with original surfaces and light-medium brown color. The overdate feature is bold, with just a few light marks to speak of. A nice example for the grade. Ex-Tom Reynolds 05/17/01.



39. 1808/7 C-2 R3 VG8. Overdate. Strong VF30, but the coin is very dark, nearly black, thanks to moderate porosity covering both sides. No major contact marks to speak of, and most of the details remain bold despite the surfaces. EDS, M1.0.



40. 1808 C-3 R1 VF35. Removed from an NGC holder as XF45BN, and pedigreed to Bowers and Merena 12/02/04 lot #104. An attractive mixture of mostly medium brown with lighter brown highlights. There are a half dozen dull contact marks visible on each side with the aid of a glass, and the reverse is rotated 165 deg clockwise. MDS, M2.0.

41. Lot of 2 Half Cents. 1808 C-3 R1 VG7, normal date, and mostly problem-free for the grade. 1835 C-2 R1 VF20, housed in a small ANACS holder as EF details net VF30 rim damaged. EAC grade is VF25+ net VF20 for a sharp rim bump directly beneath the date. Lot of 2 coins.



42. 1809 C-3 R1 EF45. Pretty glossy golden brown, and probably truly an AU50 with a mushy strike that masquerades as wear. There is a single contact mark on the obverse before the lower curl on the neck, and a shallow scratch at the center of the reverse, but each is well-hidden and does little to detract from the eye appeal. M-LDS, M2.0. Ex-2008 EAC sale lot #105.



43. 1809 C-3 R1. EF-40. Possible Broadstrike. Choice frosty chocolate brown with delicate overtones of light bluish steel in protected areas and faint, microscopic specks of darker toning sprinkled over the fields on both sides. The surfaces are satiny and offer outstanding eye appeal for the grade. The only mark of any consequence is a dull nick at the dentils over star 4. LDS, Manley state 2.0. The rims are wide and flat, characteristics of a broadstruck coin (struck without benefit of a die collar of the proper size). An alternative solution is that the coin was struck on a planchet that did not have the rims properly upset before striking. Ex-Chris Victor McCawley circa 1986; Ray Rouse; Goldberg's 09/14/08 lot #86.



44. 1811 C-1 R4 VF20. VF25 or better with the details and eye appeal of a much higher grade. Inspection under a glass reveals that the coin has been very lightly burnished and then recolored to hide the work. Expertly done, and the coin still retains good color and eye appeal. There is some very fine roughness hidden beneath the recoloring, mostly visible on the reverse, but there are no contact marks to speak of. EDS, M1.0, before any of the obverse cracks and cuds that develop at stars 1-4.

The 2012 EAC Convention Sale, May 5, 2012



45. 1825 C-2 R2 AU50+. Just a hint of rub on the highpoints, plus a tiny nick above the hair. Lustrous medium brown obverse with a little bit more lighter tan on the reverse, which is equally lustrous. EDS, M1.0, with stem end very clear.



46. 1825 C-2 R2 VF25+. Pretty original medium tan brown with smooth surfaces. Most likely struck through grease, as the lower half of the reverse is mostly gone. A neat conversation piece.

47. 1826 C-1 R1 VF25. Original color and surfaces with only minor contact marks that are certainly in line with the grade. Very sharp details with especially strong hair definition. E-MDS, M2.0. Ex-Stacks Coin Galleries 02/21/07 lot 1410.



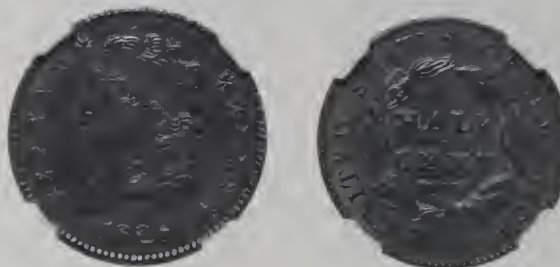
48. 1826 C-2 R3+ EF45. Pretty golden chestnut brown color and lustrous surfaces. AU50 or better in terms of wear and luster, with a 5-point deduction for a spot of darker carbon toning at ES on the reverse. E-MDS, M2.0, and an attractive example.



49. 1826 C-2 R3+ EF40+. Frosty dark olive and steel with lighter brown toning faded down from mint color in the protected areas, especially on the reverse. Sharp and attractive, close to EF45. E-MDS, M2.0. The repunching on the 6 is sharp.



50. 1826 C-2 R3+ VF30. Quite pretty tan brown color, with some reflectivity remaining to the surfaces. There are some TINY planchet imperfections that are visible only with a strong glass, and the overall eye appeal is very positive. EDS, M1.0. Ex-CVM at EAC 2007 in St. Louis.



51. 1828 C-1 R1 EF45+. 13 Stars Obverse. NGC graded as AU58BN, and the C-1 attribution is listed on the insert. AU50 details, with just a few insignificant contact marks here and there, including a dull depression beneath the eye. Possibly recolored, although NGC did not think so, and the color is an attractive mottled brown with orange undertones. EDS, M1.0.



52. 1828 C-2 R1 AU50. 12 Stars Obverse. Another NGC AU58BN, with almost no trace of wear but with very subdued luster. A coin that has been in a plastic prison too long and cries out for a brushing. EAC grade AU55 with a pair of VERY faint scratches in front of the nose, net AU50. These are only visible with a strong glass. The color is a medium brown, and somewhat matte but with obvious underlying luster crying out from underneath. E-MDS, M2.0.

53. 1828 C-2 R1 VF25. 12 Stars Obverse. Sharpness VF30 with some light contact marks on both sides, but most notable in the form of some tiny digs at reverse center and between D-S. Dark chocolate brown color with a faint sheen of Care or Blue Ribbon on the surfaces. MDS, M2.0.



57. 1829 C-1 R1 EF40. Sharpness 5 points higher but some tiny tiny nicks can be found on each side. Very attractive mottled color, a mixture of peanut butter and dark chocolate. Sharp EDS, M1.0.

58. 1829 C-1 R1 VG7. Mint Error. F12 details with nice medium brown color. Struck slightly off-center toward obverse K5, and apparently tab double-struck with evidence of the second strike plainly visible at K5. Additionally, the reverse is rotated slightly. F12 net VG7 due to some tiny contact marks and a slight bend in the planchet.

59. 1832 C-3 R1 VF20. Sharpness VF30 but the coin has been darkly recolored, and there is a touch of yellow showing through. There is also a faint scratch or two on each side, plus a notable rim nick at K12 obverse. But probably better than it sounds.



60. 1833 C-1 R1 MS60. PCGS MS62BN, and definitely "BN" with most of the mint luster subdued under a dark brown patina. There are a few tiny nicks on the obverse, including two behind the hair and another above the date that account for the grade. MDS, M2.0, with clearly visible die cracks on each side. Another coin that needs a bath.

61. 1834 C-1 R1 F15. VF20 with light contact marks on each side, including some dull nicks at each corner of the top of the hair. Dark brown color. MDS, M2.0.



54. 1828 C-3 R1 MS62. 13 Stars Obverse. Lot #96 from the 1999 EAC auction in Cincinnati, Ohio. A lustrous mint-red and exceedingly attractive MS63 with just a few tiny defects that hardly deserve mentioning. These include a tiny pinprick beneath the jaw, a spot of black carbon between stars 5-6, and a tiny nick at T in CENT on the reverse. 30% mint red or more, with a very captivating "look." M-LDS, M3.0.

62. 1835 C-1 R1 AU50. Sharpness close to mint state, but cleaned and recolored, now a glossy olive brown. Just a few tiny nicks under a strong glass.

55. 1828 C-3 R1 EF40+. 13 Stars Obverse. EF45+ sharpness, with nice medium brown color and glossy surfaces. The defects are slight, and they include some VERY faint scratches on the cheek plus a few tiny spots. MDS, M3.0 early.

63. 1835 C-2 R1 F15. VF20 but cleaned and recolored, and still a little bit too bright. There is some roughness on the portrait, plus some tiny nicks on both sides, nothing out of line for this grade level. Medium-dark brown with some iridescent blue.

56. 1828 C-3 R1 VF25. 13 Stars Obverse. An attractive specimen with solid details and minimal marks. The central color on each side is medium brown, with attractive contrasting darker brown around the periphery. Ex-Stacks Coin Galleries

64. 1837 Low-49 Half Cent Token VG10+. Sharpness a couple points higher, with a single mark in the lower left end of the bow. Original dark brown color and a nice circulated example.



65. 1849 C-1 R1 VF35+. Medium-dark chestnut brown with an original look and no real marks to speak of. The planchet exhibits some tiny imperfections under a strong glass, but that's being picky. Glossy surfaces with mark-free rims.

66. 1850 C-1 R2- VF30. Sharpness EF40 and not well struck at the peripheries. There are a couple of digs, including one at the top of the hair and another along the upright of T in CENT on the reverse, plus a tiny rim nick below the date. Original medium brown color with an obverse low spot at star 11, probably from grease on the dies.

67. Lot of 3 Half Cents. 1850 C-1 R2- VF30, original medium brown with some scattered nicks. 1851 C-1 R1 VF30, attractively recolored tan-brown with some dull scuffs. 1854 C-1 R1+ VF30, unattractively recolored dark brown with some light scratches. A lot of 3 coins, each one slightly sharper but with minor defects and net VF30.



68. 1853 C-1 R1 MS63. Removed from a PCGS MS63RB holder, and this was lot #104 in the 1999 EAC auction in Cincinnati, Ohio. Well struck and lustrous, with 5% mint red on the obverse and 25% on the reverse. An attractive mixture of golden brown with darker maroon. M-LDS, M2.0.

69. 1853 C-1 R1 AU58. Frosty medium brown. No defects, only a hint of rub on the highest points of the design. Excellent eye appeal. MDS. Ex-Goldberg's 02/11/07 lot #240.

70. 1853 C-1 R1 AU58. Another choice AU58 with glossy medium brown color, abundant mint luster, and a trace of mint red. MDS.

71. 1854 C-1 R1+ AU50. Details AU58 with strong definition on every aspect, but cleaned and recolored. Now a contrasting mixture of black and gold, with a hint of red added to the reverse. Not an ugly coin, but definitely not original. Ex-Stacks 04/22/09 lot #23.

72. 1854 C1- R1+ EF40. AU sharpness, but cleaned and recolored, and now with a glossy golden tan color that resembles the 1856 copper-nickel essay. No marks worth mentioning, but there are a couple of moderate spots of dark carbon on the reverse.

73. 1855 C-1 R1 VF35. EF40 but recolored, and now with somewhat dull surfaces that are just a touch too light. A strong glass reveals a couple of faint obverse scratches, but the overall look is mostly natural and still very acceptable.



74. 1857 C-1 R2 AU50. Sharpness close to mint state, but the coin has been recolored a glossy golden brown. The coin is poorly struck with definite weakness on the stars, coronet, and around the peripheries on both sides. Ex-EAHA 04/30/11:288.

LARGE CENTS



75. 1793 S-1 R4 AG3. Chain Cent, AMERI. reverse. Removed from a PCGS AG3 holder, and they got it exactly right. Above average details for this grade, with a faint but still readable date, and all reverse details at least faintly visible. AMERI. is especially clear. Perhaps just slightly below average in terms of condition, with very dark color and surfaces that exhibit just a hint of granularity. No marks at all on the obverse, and just a couple of tiny digs can be found on the reverse. All in all, a very nice example of the ever popular Sheldon 1, and one that should generate spirited competition.



76. 1793 S-1 R4 G4. Chain Cent, AMERI. reverse. VG7 with all details easily readable, including the date. However, the surfaces are evenly porous – imagine a very fine sandpaper and you will have it. The color is an attractive dark brown with contrasting golden brown highlights. The vine and bars edge device is still visible all around, as are a couple of light rim bumps. This and the preceding lot represent the classic conflict in the world of early copper: do you choose the nicer coin with less detail, or the sharper coin with minor defects? Well, which will it be?!



79. 1793 S-8 R3 VG10. Wreath, Vine and Bars Edge. Sharpness of at least F12, but with a host of minor problems. These include an obverse that is covered with myriad fine scratches, a light "X" scratch at central reverse, and some minor black corrosion limited mainly to the obverse. Don't run yet – this one still has a lot going for it, including full bold details on each side and a resulting coin that has a nice contrasting cameo look. Apparently the victim of a planchet cutter error, with a sharp arcing cut into the reverse from the A in AMERICA to above TE in UNITED. There is a lot to study on this coin!



77. 1793 S-4 R3 AG3+. Chain Cent, AMERICA reverse with PERIODS obverse. Sharpness of G5 with perfect medium tan color. LIBERTY and the period following are bold, but for all intents and purposes, the date is worn smooth. The letter I has been scratched behind the hair, and the letter H has been scratched in front of the portrait. Otherwise, this one is pretty nice. The reverse is mostly problem-free, and the vine and bars edge device is exceptionally sharp all around. G5 net AG3+.



80. 1793 S-9 R2 G6. Wreath, Vine and Bars Edge. F12 or perhaps sharper, but the coin is moderately and even granular, such that much of the details are obscured and the coin has a nearly black color. Everything can still be made out with some effort, including the date. No marks or damage aside from the roughness. EDS, before the reverse die crack.



78. 1793 S-6 R3 G6. Wreath, Vine and Bars Edge. Sharpness VG10 with very fine porosity that reduces the net grade to G6. All details are visible, including a bold date, and the coin retains a decent dark brown color. There is a notable rim bump at K2 obverse, plus a well-hidden scrape at the left ribbon end. Ex-James E. Long, 01/25/04.



81. 1793 S-11c R3- AG3. Wreath, Lettered Edge. The obverse is G4 with all details visible, including the date. The reverse is much weaker. AG3 at best, and the entire coin exhibits very faint roughness. There are some strong planchet flaws in front of the forehead and over much of the right side of the obverse, plus a dull depression at the center of the reverse. Still a very decent coin thanks to the readable date, and the edge lettering and single leaf after DOLLAR are also easily readable.

The 2012 EAC Convention Sale, May 5, 2012

82. 1793 S-11c R3- BS1. Wreath, Lettered Edge. Smooth and well-worn, but with nice medium brown color. Parts of the bust and the sprig can be made out on the obverse, but the reverse is worn smooth. There are some light scratches at the center of each side, but the edge lettering and the single leaf are still visible. Just a filler but still a 1793!

83. Special hardbound presentation copy of the catalog of the Denis W. Loring collection of 1793 large cents, sold by Heritage in the 2012 FUN sale. Heritage made exactly five copies of this "personalized catalog," which contains only the Loring 1793's: S-2,3,4,5,6,8,9,10,11a,11b,11c and 13, all PCGS and NGC AU50 through AU58. Donated lot – all proceeds to EAC.



87. 1794 S-28 R2 F15. Removed from a PCGS EF40 holder, and pedigreed to Stacks / Bowers 11/15/11 lot #243. Very dark brown, nearly black, with spots of light corrosion on the obverse and some minor but well-spread planchet imperfections on the reverse. The edge is blundered, reading "ONE DREDRED FOR A DOLLAR" and with HUN still visible beneath the first DRE. A dramatic example of the difference between a PCGS EF40 market grade and an EAC grade of VF30 net F15.



84. 1794 S-18b R4 G4. Head of 1793. Sharpness 2-3 points higher, but with three strong rim bumps on the obverse and a few weaker ones on the reverse. The planchet is medium brown with very micro granular surfaces, and there is a patch of darker toning in the lower curls. Most of the obverse is clear, including a faint date, and more than 75% of the reverse can be made out. The edge lettering including leaf UP is clear.



88. 1794 S-28 R2 F15. Choice tan brown color with glossy surfaces. Judging from the reverse, the coin had perhaps VF30 sharpness, but the hair has been skillfully re-engraved. And I do mean SKILLFULLY – if you take a close look at the work under a strong glass, it's quite impressive. Although artificially induced, the coin now has the looks of a glossy AU50 with the typical nice color commonly seen on the S-28 variety.



85. 1794 S-23 R4+ G4. G6 sharpness but recolored a very dark brown. The planchet exhibits very minor roughness, and there is a strong rim bump left of the cap. The obverse is full and even, but the reverse is weaker, perhaps AG3. LDS with a die crack running from the cheek to the rim near the pole tip.

89. 1794 S-28 R2 G6. Sharpness of VG10 but with several defects, including an obverse that is covered with myriad fine scratches, and surfaces that are evenly rough on both sides. The color is a medium brown with lighter highlights, and the color of those highlights suggests an old cleaning. Ex-Stacks Coin Galleries 07/15/98 lot 1576.

86. 1794 S-23 R4+ BS1. Another S-23, this one with a FR2 obverse with the date mostly worn away. The reverse is mostly gone, too, although parts can still be made out, and the coin has dark brown color and light surface roughness. Late die state with the obverse die crack faintly visible but strong enough to confirm the attribution.

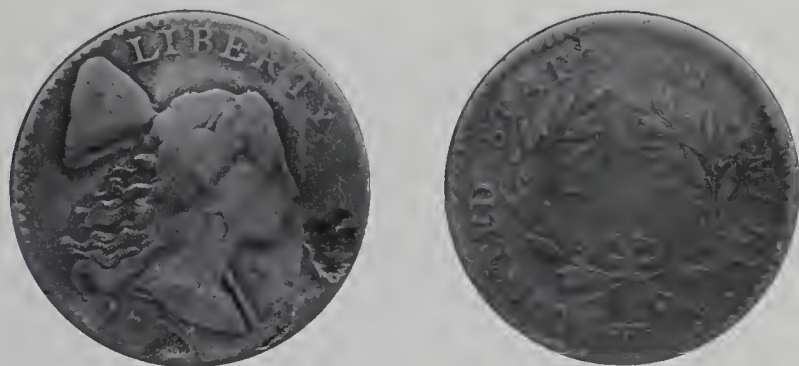
90. 1794 S-30 R1 VG7. F15 sharpness with all details very bold, including the date. The obverse is covered with several patches of angry black-green corrosion, and the reverse shows a dull scrape at left center between D-S. The coin itself has decent very dark brown color. This seems to be the type of coin that does unexplainably well on eBay.

91. 1794 S-30 R1 G6. Nearly a twin to the preceding lot, with similar details, color, and quality. The starting details are just a hair lower at F12. Both sides are covered with visible scratches, and like the last lot, the obverse is covered with several areas of corrosion and pitting. Ex-Chris Young 03/17/94.

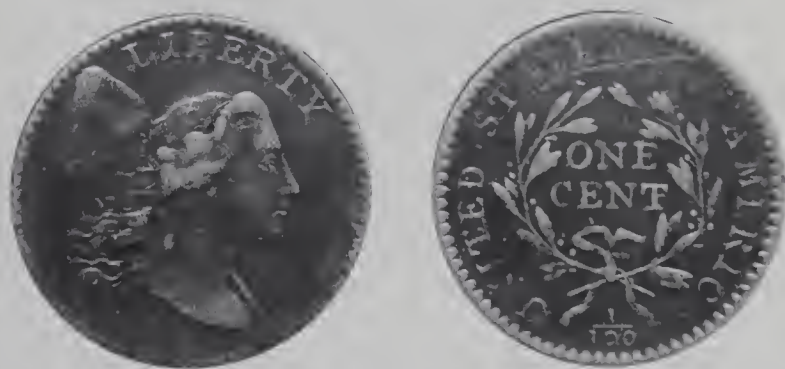


92. 1794 S-34 R5+ G6. VG10 with dark brown, finely granular surfaces. The highpoints are a contrasting pink salmon that suggest an old cleaning, and there is a collection of small rim disturbances in the form of scrapes and dents along the obverse. There is also a tiny reverse dent between D-S. That being said, all of the details are full and bold, and when is the last time you had the opportunity to purchase an S34? EDS, Breen I.

93. 1794 S-35 R5 G5+. Sharpness F12 but poorly recolored a very dark brown with splotchy orange undertones. Both sides are moderately pitted, and there is a dull scratch that nearly bisects the reverse vertically. E-MDS, Breen IV.



94. 1794 S-36 R5 G5. VG8 with obverse planchet voids directly in front of the chin to the rim, and to a lesser degree near the 94 in the date. There are also some shallow planchet laminations at the lower jaw and into the hair, all as-struck. The color is an attractive light brown, but the coin has been recolored to achieve that color. The reverse is much nicer and nearly problem-free. EDS, Breen I, and yet another tough 1794.



95. 1794 S-42 R4 VG10. Sharpness much higher, perhaps VF20, although the date is very faint on this example. The coin is a very dark brown with light yet even granularity on both sides. The obverse shows just a tiny rim nick at K3, but the reverse has several light scratches plus a deeper arcing scratch through and under STATES. Ex-Jackson Storm 07/84.

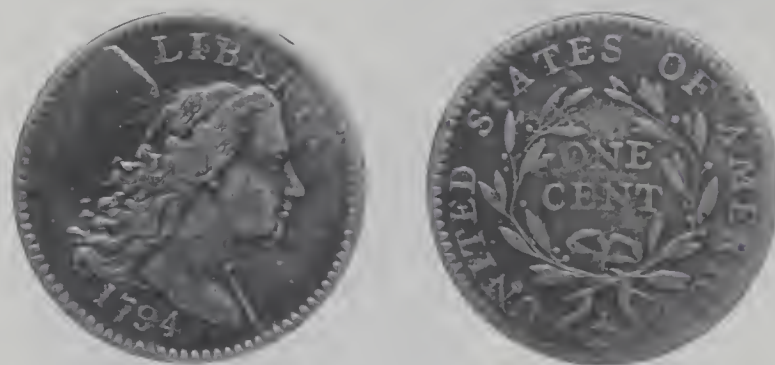
96. 1794 S-44 R1 FR2. Mostly just smooth and well worn. The obverse is AG3 with a mostly complete date, and the reverse is much weaker BS1. Very nice for a low grade, with no defects worth mentioning.

97. 1794 S-49 R2 AG3. Sharpness higher at G6, although the date is almost completely gone except for the 9. Medium brown with rough surfaces and some scattered nicks and scratches on both sides. The reverse is much stronger than the obverse. EDS.

98. 1794 S-51 R4 AG3. The obverse is G5 with plenty of hair separation and a full date. The reverse is much weaker, just FR2. Attractive peanut butter and dark chocolate contrasting color, with minor planchet roughness on each side and some light rim damage near the cap. Not bad for an AG3. Ex-Chris Young 05/04/96.



99. 1794 S-58 R3 AG3. Good details with minor roughness but a full date. The obverse shows some light scratches, and not to be outdone, the reverse strikes back with some light areas of black corrosion. Late die state, Breen IV, with a reverse cud at UNI. Although the cud is in the right place, the coin has been so well-worn that it is no longer raised but is worn smooth.



100. 1794 S-60 R3 VG10. F15 and expertly recolored, leaving the coin with a very attractive appearance. There is a dull dig on the chin, plus a couple smaller ones off the chin and in front of the neck. The reverse shows a couple faint scratches with a strong glass, but the overall eye appeal is positive. Ex-Superior M&G 02/08/98 lot 838. M-LDS, Breen IV.

101. 1794 S-72 R2 FR2. Exact Head of 1795. AG3+ details, with minor roughness and some light scratches in front of the face. The date is faint but fully readable and much of the reverse details can be made out as well.

102. 1794 Cent Printer's Block. A small wooden printer's block, designed to be pressed into ink and then used to stamp an obverse and reverse pair for a 1794 large cent. Definitely a unique item!

103. 1795 S-73 R5- G6. Lettered Edge. VG7 on a dark planchet with finely granular surfaces. There are some light areas of black corrosion on the obverse, plus a collection of shallow scratches at central reverse. The edge lettering is fully visible. Ex-Dan Trollan at EAC 1999. MDS, Breen II.

104. 1795 S-75 R3 FR2. Lettered Edge. AG3 with medium brown color and a smooth planchet. The rims have been hammered around much of the coin, but the date is mostly full and some of the edge lettering remains visible.

105. 1795 S-76b R1 AG3+. Plain Edge. The obverse is G5 with full details and some hair separation, with only very minor roughness. The reverse is weaker, perhaps AG3. MDS.

106. 1795 S-76b R1 AG3. Plain Edge. G5 details to begin with, but the coin has been cleaned and recolored, and also lightly smoothed. There are also a half-dozen dull digs on the obverse, and light roughness on both sides. Date is visible.



107. 1796 S-81 R3 F12. VF30 sharpness with nice medium brown color but with evenly granular surfaces on both sides. Additionally, there are a few areas of light pitting on the obverse, heaviest at the lower curls and at the tip of the pole. The reverse is mostly free of the pitting, but there is a small patch in the wreath beneath TED. EDS. Struck on a slightly larger than normal planchet. Ex-Bruno Crossfield 12/56; W.C. Blaisdell 09/76; Del Bland 11/78; Dr. Willard Carmel; Del Bland



108. 1796 S-84 R3 F12+. Very attractive medium brown color and sharp F15 details. Both sides have a light mixture of red patina mixed into the brown, and the reverse has a somewhat stronger dusting above TED. The obverse is nearly mark-free, but a tiny nick is visible beneath the ear. The reverse is equally pleasing, with just a tiny rim bump to note above the E in UNITED. E-MDS, Breen II, and an overall attractive example. Ex-Jon Hanson 09/71; Bob Vail 11/88; Del Bland; Bob Everett; Gary Ruttenberg; Superior / M&G 06/01/98 lot 97.

109. 1796 S-85 R5- G5. Authenticated and graded by NGC as VG details, corrosion. The details are indeed VG10, but the entire coin is covered with a light reddish corrosion that includes some areas of darker black, plus a spot of raised green at the junction of the chin and neck. No significant contact marks or rim nicks to speak of. All details remain clear.

110. 1796 S-88 R4 FR2+. The obverse is AG3 with a date that is very faint but still visible. The reverse is a point weaker, and the entire coin is very faintly granular. Dark brown color with a couple of even darker spots on each side, plus a reverse depression at AM.



111. 1796 S-90 R5+ FR2. ANACS yellow-label as AG3 details, scratched. The scratches include 2 or 3 long ones on each side, and although not overly deep, they are plainly visible to the naked eye. The color is an original medium brown, and the obverse is close to G4 with a full date. The reverse is a much weaker FR2, and it is upset to nearly full medal alignment.

112. 1796 S-97 R3 FR2. VG7 details but black and very rough from heavy corrosion. Additionally, there is a dull punch mark at center obverse that bulges slightly into the reverse. On the plus side, the date remains fully visible.



113. 1796 S-101 R5- F15+. VF20 sharpness with dark brown color. The obverse shows a half-dozen small contact marks scattered about, plus a couple of VERY faint scratches visible under a glass. The reverse has some light corrosion around the fraction area, plus there is a light scratch above ED-S. Very nice color and eye appeal despite the imperfections, and a top 12 coin in both censuses. Noyes #26747 as VF25 net F15, and tied for CC8; Bland as F15 and tied for CC11. Ex-Ralph Goldstone; George Ramont 08/12/76; Jules Reiver; Heritage 01/24/06 lot #19283 where it realized \$6325 as NGC EF40BN. Comes with the NGC label showing the Jules Reiver provenance.

114. 1796 S-101 R5- Draped Bust F12. Sharpness VF20 but there is a patch of minor corrosion and reddish verdigris at the date with similar very light roughness near the rim on the right side of the obverse. The remainder of the planchet is smooth and attractive with only minor nicks. A dull rim nick at TY and a thin vertical nick on the shoulder are good identifying marks. Rather glossy chocolate and steel brown with splashes of darker olive in the roughened areas on the obverse. The date and legends are complete and clear. Nicely struck E-MDS, Breen state II.

115. 1796 S-103 R4+ FR2. LIHERTY obverse. G6 details but very dark brown and moderately corroded leaving the surfaces quite rough on each side. A few light rim bumps are present.



116. 1796 S-104 R3 G5. LIHERTY obverse. G6 details with dark brown color and just a hint of planchet roughness on each side. There are also a few henpecks on the cheek. The date and LIHERTY feature are each full and bold.

117. 1796 S-108 R4 AG3. G5 details with original medium brown color, but plagued by extensive deep pitting that is visible above the top of the obverse, and covering about 20% of the reverse along the left center. The pitting is also scattered along the reverse rims, and also into the edge. The date is fully visible, but with some strong pits on the 9.



118. 1796 S-109 R3 VG8. VG10+ sharpness and close to F12, with a pleasing medium brown color on both sides. There is some extremely fine granularity underneath a shallow layer of green patina on each side, plus a staggered scratch on the reverse through ONE CENT and the lower left wreath. Looks better than it sounds. Ex-Jack Beymer 08/04/82; Jack Robinson; Superior 01/29/98 lot 197; Tom Reynolds; Mike Levin.



119. 1796 S-114 R5- AG3+. Dark brown with matte surfaces from very fine porosity. There are some shallow scratches that follow the arc of the rim from LIBERTY down to the bust tip. G5 details with everything visible including a full date. EDS, Breen I.

120. 1796 S-115 R3 AG3. G5 details but very dark and moderately corroded on both sides. There are several light scratches blended into the rough surfaces, plus a half-dozen significant rim bumps spread over each side. All details remain visible including a full date. MDS Breen IV. Ex-James Edgar Long Jr. Esquire 07/11/98.

121. 1796 S-116 R5- AG3. VG7 details but covered with a coat of dark lacquer and the rims have been hammered all around. And I mean HAMMERED. Fortunately, the date is still fully visible, and there is certainly enough detail to confirm the attribution.

122. 1796 S-117 R5+ AG3. A very smooth, attractive, wear-only example with nice medium glossy brown color and a full date. There are a couple dull contact marks here and there, but overall this is a very nice coin for the grade and variety.

Newly Discovered 1796 NC-5



123. 1796 NC-5 R7 FR2. As I write this description, there are NINE examples recorded in my Noyes Numistudy condition census. This example is not recorded, and it would be tied at CC9-10 with another FR2. VG10 details, but evenly porous, slightly bent, and the 6 in the date has been gouged out. Medium brown color with all reverse details still legible. On the plus side, easily attributable thanks to the unique die cracks through the 9 and 6, which are still clear. Don't hate the defects – they might just make this tough R7 NC “affordable”!



124. 1797 S-122 R5+ AG3. Good or better details with dark brown color and minutely corroded surfaces. Also a couple rim marks, but all the diagnostics are clear.

125. 1797 S-123 R4 AG3. Good details with light brown color but with very light even granularity. No real contact marks to speak of, and the details are plainly visible aside from some weakness at top center reverse. Ex-Richard Coday 09/27/94.

126. 1797 S-123 R4 FR2+. 1797 S-143 R5 FR2 Stemless Reverse. The S123 is FR2+ and choice for the grade with a full date. The S143 is dateless with minor planchet roughness and some notable reverse scratches. Lot of 2 coins.

Early Die State 1797 S-124



127. 1797 S-124 R5+ G5. An early die state example with full details on each side, including a strong date. There are a couple of minor rim bumps visible on the obverse, plus a faint scratch on the bust into the drapery, but nothing out of line for the grade. Removed from an NGC G4 holder. Ex-Fred Borchardt.

Late Die State 1797 S-124



128. 1797 S-124 R5+ G5. Sharpness better than G6, but there are a couple of dull digs on the cheek and beneath the chin, plus several light scratches at the center of the reverse. Late die state, Breen V, with swelling across the bust tip that nearly obliterates 97 in the date. Ex-Mike Grieman EAC 2001.

129. 1797 S-124 R5+ G4. G6 sharpness but black from moderate corrosion covering both sides. No contact marks or rim disturbances otherwise. Another LDS example with swelling across the bust tip that obscures the last half of the date.

Early Die State 1797 S-127



130. 1797 S-127 R4 F15. Five points sharper with a few very light hairline scratches in the field before the portrait and traces of extremely fine verdigris dusted into protected areas. There is a dull rim nick right of the Y in LIBERTY and another at the U in UNITED. Rather glossy olive and chocolate brown with reddish brown toning in protected areas of the reverse. Rare EDS, Breen I. Ex-EAC 2006 #131.

Late Die State 1797 S-127



131. 1797 S-127 R4 F12. Reverse of 1797 with Stems. VF25 but recolored, or should I say "painted" a glossy dark brown, and with several rim bumps and light scratches. The rim bumps are somewhat heavy, and there about a half dozen of them on each side. There are also a couple of contact marks on the reverse, including one at the N in CENT, and another at the junction of the bow and wreath. Recorded by Bill Noyes as #59279 at VF20 net VG10. LDS, Breen VI, with a strong obverse die crack from the rim opposite the knot, and with a lighter branch crack from the lower curls through 1 to the rim. Ex-Walt Husak; EAC 2011 lot #182.



132. 1797 S-129 R5 VG8. Sharpness exceeding F12, but both sides are covered with a fine black corrosion that manifests as a layer of black patina with minor pitting underneath. Otherwise there are no significant marks to speak of, and the color is a decent combination of black and dark tan. Ex-RSB2 1996 lot 184; EDS, Breen I.

133. 1797 S-129 R5 FR2. G5 details and cleaned and recolored an attractive medium brown, and the coin has been crudely holed near the rim at K3 obverse. The planchet shows overall light roughness. The obverse is bold with a full date, but some of the reverse is obscured by the granular surfaces.



134. 1797 S-137 R2 VG7. Mint Error. Housed in an NGC VG8 holder as "Double Struck Mint Error." The first strike was slightly off-center, and the second strike was rotated 35 degrees CCW, with evidence of the second strike plainly visible on both sides. The most obvious doubling is at LIBERTY, which now reads LIBERTERTY, and on the reverse at AMERICA and the fraction, of which there are now two. VG8 net VG7 for a dull dent in the right obverse field. Original dusky brown color with minor chatter on both sides.

135. 1797 S-138 R1 AG3+. Mint Error. Double struck, with the second strike rotated 5 degrees CCW. The offset is not dramatic, but the doubling is plainly visible on the bust and within the denticles. G6 details, with some scattered light pitting on the obverse and even heavier pitting and corrosion on the reverse. Full date, medium brown color.

136. 1797 S-139 R1 FR2. Mostly smooth AG3 with light brown color. There are a half-dozen tiny dents through ERT on the obverse, plus some as-struck planchet striations on each side. The date is full except for the lower half of the 7. Very late die state with a strong obverse crack from the left rim to the lower hair curls.



137. 1797 S-141 R4 VG7. F15 details. Glossy very dark brown, and with finely porous surfaces. There is a dull planchet void on the reverse in the wreath just right of the bow, plus a notable scratch from the second S in STATES extending downward toward the N in ONE. M-LDS, Breen III.



138. 1798 S-147 R5-VG10. F15 details but repainted a glossy very dark brown with subtle orange undertones. The obverse has only the faintest hint of porosity, but the porosity is a little stronger on the reverse, especially along the left side. There are no contact marks to speak of, and the details are very strong. Ex-CVM 09/00; Dan Trollan.



139. 1798 S-147 R5 VG7. Completely original with nicely contrasting medium brown color and lighter highpoints. The obverse is easily VG10, with just a tiny rim nick at K7 plus a short row of 3-4 denticles impressed behind the ribbons. The reverse is G6 with some weakness along the left side, plus a pair of dull nicks beneath the second S in STATES. Three tiny rim nicks are visible on the reverse as well. EDS, Breen I.

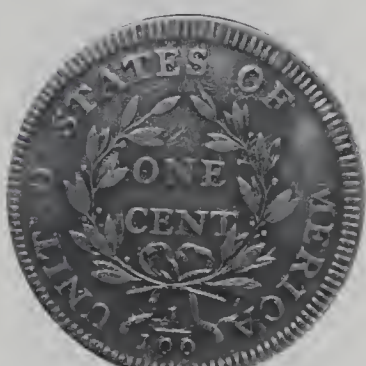
140. 1798 S-147 R5-AG3. G5 with even moderate porosity and some angry red corrosion on the reverse. The obverse shows a dull scuff near IBE and another through the date, plus a rim dent above the R in LIBERTY. All obverse details are full and bold, but about half of the reverse is obscured by the porosity and corrosion.



141. 1798 S-148 R2 VG10. Ex-JJ Teaparty 2001, with sharp VF20 details. The entire coin is covered with a layer of glossy green-black patina, plus some spots of raised red corrosion on the reverse. No contact marks and rims that are both full and clean. EDS, Breen I.



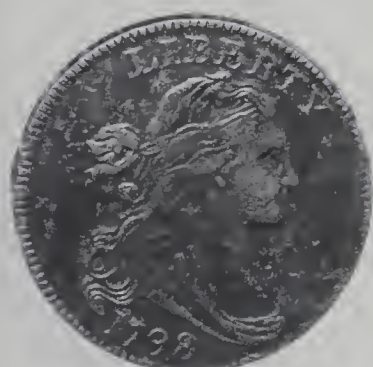
144. 1798 S-158 R4 G4. Sharpness VG7 but cleaned long ago and with several plainly visible scratches on the obverse. Rare M-LDS with a reverse rim break over IT that eventually extends over ED as the die continues to deteriorate. Light glossy brown color, almost retoned to a normal look.



142. 1798 S-154 R4+ VG10. Expertly recolored a pretty glossy medium brown, and the details are easily VF20 with plenty of hair separation and bold rims on each side. The obverse has a dozen fine scratches that are plain to the naked eye, but the reverse is problem-free. LDS, Breen III with heavy clashing and areas of swelling on the reverse.



145. 1798 S-159 R3 VG8. Medium brown with rainbow highlights that suggest an ancient cleaning. There are a half-dozen notable digs on each side of the coin, including a strong dent between RT on the obverse and at TE and the left ribbon on the reverse. Both sides exhibit minor roughness, and there are some scratches hidden in there, too. E-MDS.



143. 1798 S-157 R2 VG10. Sharper than VF20 but the coin is very dark, nearly black, from overall moderate corrosion. The surfaces are glossy with green undertones. Some light rim bumps and contact marks can be found, but they take second fiddle to the planchet quality and don't bear mentioning. LDS, Breen IV, with a notable crack extending from the neck to the rim on the obverse.



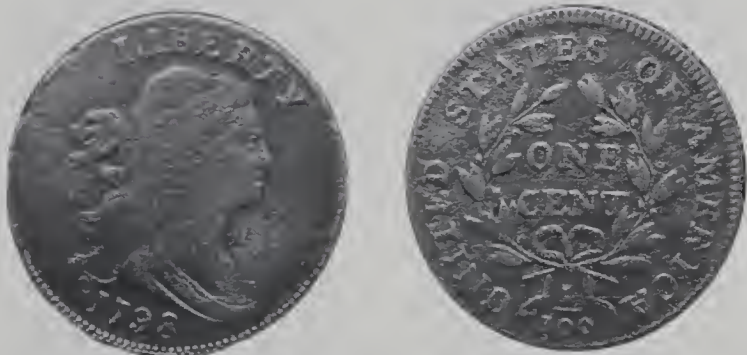
146. 1798 S-161 R2 AG3. Recolored dark brown with some orange highlights on the obverse. Very minor roughness is visible on each side, but not enough to deduct from this grade level. Rare M-LDS, Breen VIII, with a huge rim break cud above ATES on the reverse, but with the dentils above TES still visible. Full bold date and strong reverse details for the grade, despite the deteriorating dies.



147. 1798 S-162 R4 F12+. Style 1 Hair with Small 8. Sharpness near VF20 with a few light rim bruises on the obverse, strongest left of the L, and other light contact marks scattered over the obverse. Glossy dark chocolate brown with lighter chocolate toning on the highpoints of the obverse thanks to a light cleaning on that side. The date and legends are bold. MDS, Breen II. Ex-EAC 2008 #302.



151. 1798 S-165 R4 F12+. Sharpness close to VF25, but with very light pitting on the obverse that becomes a couple degrees larger on the reverse. Matte dark brown color, with typical scattered tiny nicks.



148. 1798 S-162 R4 VG7. F12 details with moderate granularity on both sides, and that granularity also hides some faint scratches. The obverse has a half-dozen light rim bumps, and the color is a medium brown with some brassy golden undertones.



152. 1798 S-168 R3 VF20. VF35 with sharp details and nice medium brown color on the highpoints. The fields are covered with an extremely dark brown patina and light pitting that makes the surfaces a little rough but also creates an attractive contrast. There are a couple of faint scratches well-hidden in the hair, but otherwise no significant contact marks. Ex-Superior / M&G 10/00 lot 1173. LDS, Breen IV.



149. 1798 S-163 R4 VG8. Sharpness F15 but with a greasy dark green and brown appearance, likely from a thick recoloring. There are a couple of notable nicks on the obverse, plus some moderate surface roughness on the reverse. EDS.



153. 1798 S-169 R3 VG10. Pretty medium tan brown color with strong details. There are a few contact marks on the obverse, including a notable one at the top of the hair and a couple smaller ones on the neck. The reverse also shows minor signs of contact, but there are no individually noteworthy marks. Perfectly centered and well struck, with nice color and eye appeal. M-LDS, Breen III. Ex-Tom Reynolds; EAC 2011 lot 215.

150. 1798 S-164 R4 AG3. Attractive medium brown with lighter highlights, and quite nice for an AG3. No real defects, just wear, and the coin possesses a full date.



154. 1798 S-172 R2 F15. Sharpness 5 points higher but with some light nicks on each side, plus a small round patch of darker toning behind the ribbons. Glossy medium olive brown, possibly cleaned and recolored long ago. LDS, Breen VI, with a large reverse rim break over ICA and the die heavily sunken over TY. Ex-Jack H. Robinson 01/89:350; Superior 02/91:709; March Wells 06/18/01; Terry Denman; CVM.



155. 1798 S-176 R4 G6. VG7 sharpness with very minor porosity and some light scratches on the obverse. The color is a nice tan brown and the coin is still attractive despite the defects. M-LDS with the die crack upward from the bust tip plainly visible.



156. 1798 S-177 R4+ VG8. F15 with very dark brown color and fine porosity throughout. There are a few notable scratches on the obverse, including a deep one from the eye to the rim, plus some angry raised red and green corrosion on the reverse. MDS, Breen III.

Newly Discovered 1798 S-179



157. 1798 S-179 R2 MS60. This one might be on the cover! A lustrous golden brown UNC with a great strike and wonderful eye appeal. Really no defects to speak of, and a joy to study in this condition as the fine details of the die can be fully appreciated, such as the tiny die cracks around the fraction and the delicate recutting at UNITED. MDS, Breen III, with fine die cracks on both sides and rim crumbled over M. A new discovery for the variety that should easily be within the top 10 examples known.



158. 1798 S-184 R2 VG8. VG10 details with decent mottled medium brown color. There are some areas of darker corrosion on the obverse, most notable in the fields at K3, plus some raised corrosion on the reverse at the top of the ribbon. Another good candidate for eBay.



159. 1798 S-185 R2 VF25. Ten points sharper with a half dozen rim nicks on each side, the notable ones at the first S in STATES and second A in AMERICA, and there is a dull nick on the cheek near the ear. Otherwise the surfaces are smooth and glossy offering outstanding eye appeal. Choice glossy chocolate brown with underlying frost in protected areas. EDS, Breen I.



160. 1798 S-185 R2 VF20. Removed from a PCGS VF25 holder, and they got that part right. Original, attractive, medium brown color with mostly glossy surfaces and strong details. There is a little bit of red coloration inherent to the planchet that is visible on the obverse, but the only detraction is a trio of tiny, dull dents above the shoulder. A nice example. E-MDS, Breen III.



161. 1798 S-187 R1 EF40. Style 2 hair with small 8. Five points sharper but lightly cleaned and nicely retoned glossy chocolate and olive brown. No roughness. A dull, light diagonal nick in the field under the chin is the best identifying mark. Nicely struck EDS, Breen state I.

162. 1798 S-187 R1 G6. 1800 S-197 R1 G5. 1801 S-224 R1 G5. A well-matched trio, as each coin is sharper but with dark color and rough surfaces from minor porosity. The S187 is F12 net G6, and includes some pitting in addition to black porous surfaces. The S197 is a little smoother, VG7 net G5, with the Q-break feature plainly visible. The S224 has a bit lighter color, VG7 net G5, and it's a M-LDS example with a reverse rim break over AME. Lot of 3 coins.

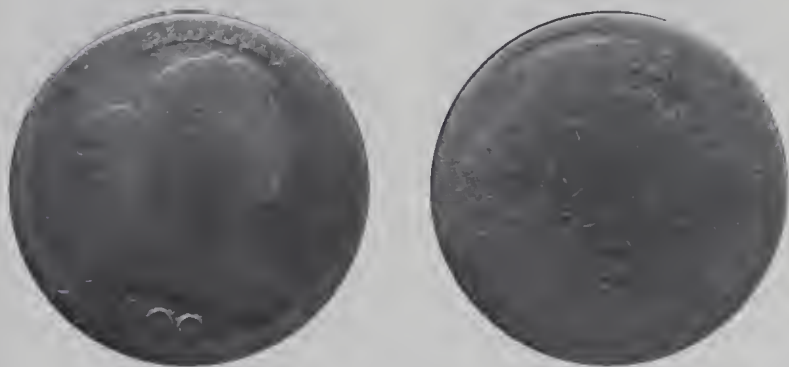


163. 1799 S-189 R2 G6. Sharpness that exceeds VF20, but the coin is black from moderate corrosion, and the coin is also slightly bent. To make matters worse, the obverse is covered with several fine scratches, and the date is completely gone from a combination of an axially mis-aligned strike, the corrosion, scratches, and wear. There are also some strong scratches at the center of the reverse. E-MDS, Breen II, with the reverse mint mark beneath E in ONE faintly visible.

164. 1800/79 S-196 R1 G6. VG8 with medium brown glossy color over most of the coin, but with a splash of much darker brown on the obverse. Both sides have some light scratches, with the most severe damage occurring on the face and the rim in front of the face. The overdate feature is very bold, and the reverse is the nicer side of this coin.



165. 1800 S-198 R5+ FR2. Possibly a bit sharper but moderately granular. Medium brown color. The 18 in the date is obscured by the roughness, but the 00 is clear, as is the small spike extending downward from the left ribbon end. No real marks, just rough surfaces.



166. 1800 S-200 R3 FR2. Struck about 3% off-center toward obverse K12, and at first glance a smooth brown wear-only example with a bold date. Closer inspection reveals some very light scratches covering each side. Still pretty nice for the grade. MDS.



167. 1800 S-204 R4 VF25. VF30. Medium to light reddish brown and steel. Hard, smooth surfaces. A couple darker stains and minor marks. The only notable one, a small dig or void at the bottom of E in UNITED. Eye appeal near choice. Ex-Harry Jones; John Wright; M&G 4/3/06; Dan Holmes.



168. 1800 S-208 R3 VG10. Original medium brown with VF20 details, but both sides are covered with light scratches and some areas of light corrosion. The obverse is a little worse than the reverse. E-MDS, Breen II.



170. 1800 S-210 R5+ G4. A point sharper, but there is a tiny nick in front of the nose, and the entire coin is very dark brown with a large stain covering more than half of the obverse. Looks better than it might sound. M-LDS with a strong obverse die crack running through the E toward the rim at K3.

171. 1800 S-211 R3 G6. VG8 with medium brown color. There is light corrosion eating into the surfaces on each side, plus a sharp 3-4mm dig on the jaw. All details are bold. MDS, Breen IV; ex-Mike Grieman 04/00.



172. 1800 S-212 R3 VG10. Dark green-black color from light even porosity, with some areas of angry red raised corrosion on the obverse, especially at the top of the hair. F12 or better in terms of details, with no contact marks to speak of. Breen IV.

173. 1801 S-214 R3 G5. G6 or a little sharper with mottled medium and dark brown color. The obverse has some minor roughness that obscures some of the date, and the reverse has some red and green verdigris that affect about half of the rims.



169. 1800 S-209 R3 VF30. Sharpness EF45 with glossy surfaces that have been recolored and then coated, resulting in surfaces that resemble glossy photo paper. The color is a very attractive golden brown, and the overall eye appeal is very positive. There are a couple of light nicks above N in ONE on the reverse, and a tiny spot of red corrosion on the rim beneath the fraction, but these are very minor. Like an aging model that has had plastic surgery and implants – some will love it, some will not, but nobody will think this girl is natural. Del Bland EF45 and tied for CC5; Noyes EF45 net VF30 Minus and CC11, although the coin is not photographed in Numistudy and it sure looks better than at least a few examples above it. Ex-Henry C. Hines; Homer K. Downing, 1952 ANA; New Netherlands #38 lot 1867; C. Douglas Smith 1971; RSB1 1986:306; Dr. M. Eisenberg.

174. 1801 S-215 R4+ AG3. Clipped Planchet. Glossy dark chocolate brown with lighter chocolate high points, a short hairline scratch at the second A in AMERICA. The date is readable, although the 18 is weak due to swelling in that area, and the legends are nearly complete. There is a curved planchet clip, as struck, just right of the date, but it does not affect any of the design. MDS, Breen state V. Ex-John Ashby 05/30/80; Daniel W. Holmes, Jr.; Goldberg's / M&G 09/19/10 lot 407.

1802 S-225



175. 1801 S-218 R5+ VG8. Three Errors Reverse. VG10 with light even porosity. The obverse shows a pit mark between RT and a couple more at the nose, and the reverse has a couple smaller pits after the second S in STATES. Dark brown color with all details strong. Noyes #32696 as VG8 net VG7 Average and CC10. Ex-Darwin B. Palmer 1993; James Edgar Long Jr. Esquire; Fred Borchardt 10/00, plus Dan Trollan in there somewhere!

176. 1801 S-222 R1 VG7. VG10 with moderately granular surfaces. Cleaned and recolored, now mostly dark chocolate brown with some hints of orange. The obverse has some purposeful scratches that resemble D in the left field and N in the right – perhaps an A or an O was worn smooth off the bust. The reverse is scratch-free but does have a significant rim bump above ME. E-MDS, Breen II.

177. 1802 S-225 R3 VF30. Slightly sharper but there is a small patch of very shallow verdigris in the field near the dentils before the throat. Otherwise the surfaces are smooth and attractive showing only a few tiny contact marks. A pinprick in the field close over the bust and another near the hair under the L in LIBERTY are the notable ones. Glossy chocolate brown with steel brown highpoints and hints of reddish chocolate brown toning in some of the protected areas. MDS, Breen state IV. Ex Andrew Lustig 2/87-Doug Bird 3/87-Dr. Harry Salyards



178. 1802 S-225 R3 F12+. Sharpness close to VF20 and the hair certainly justifies that grade. Original, even dark brown color, but with too many light contact marks on each side. None of these are overt, but there are just a few too many to ignore. EDS, Breen II.

1802 S-226

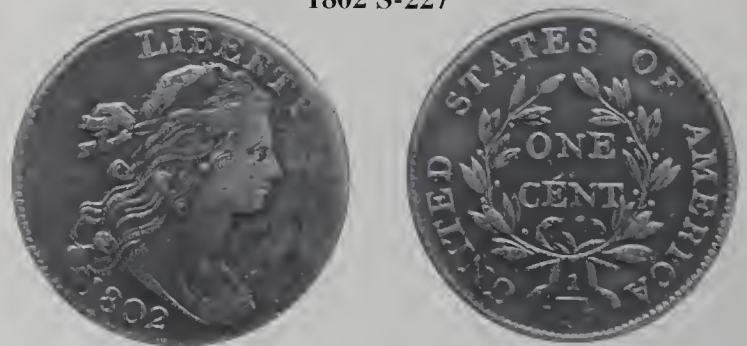


179. 1802 S-226 R3 EF40. Sharpness close to AU50. Glossy jet black surfaces with some very fine surface porosity visible under magnification. Sharply struck MDS Breen III. Called EF45 and equal CC8 in the DNB census. Ex-Ray Chatham-Dorothy Pachal. Superior 9/7/1997:285



180. 1802 S-226 R3 F12. Slightly sharper but there are some small contact marks scattered over the obverse, mostly in the field behind the portrait, and a small rim bruise at the D in UNITED. Glossy chocolate and steel brown, the protected areas a shade or two darker than the highpoints. The obverse is especially glossy suggesting a "Sheldonized" surface on that side (very lightly waxed to enhance eye appeal). LDS, Breen state IV. The die crack that arcs before the face is strong creating a shallow shelf with the field outside the crack slightly depressed. A neat die state. Ex Jack Robinson, Superior 1/29/89:491 (lot ticket included)-Dr. Harry Salyards.

1802 S-227



181. 1802 S-227 R2 VF20. Very glossy chocolate brown. Some of the details are slightly sharper than VF20, particularly the hair details, but there are some tiny contact marks scattered over both sides, mostly in the field before the portrait. A thin diagonal nick just right of the second S in STATES is a good identifying mark. MDS, Breen state II. The die clashmarks on the obverse are strong. Struck with the obverse die slightly misaligned to K-2.5. Ex Willard C. Blaisdell 9/76-Del Bland-G .A. Kemp 6/22/86-Dr. Bob Shalowitz 11/87-Dr. Harry Salyards.



182. 1802 S-227 R2 VF20. Five points sharper with a scrape on the rim at AM and two sharp nicks at the top of the wreath. Otherwise the surfaces and eye appeal are excellent. Glossy chocolate brown. Ex-Philip Van Cleave, Kagin's 01/30/86:5252; John D. Wright 01/06; McCawley & Grellman 04/03/06; Daniel W. Holmes, Jr.; EAC 2010 lot 263.

1802 S-228



183. 1802 S-228 R2 VF30. Error Fraction 1/000. Sharpness near EF40 but there is a thin diagonal nick on the neck plus another on the nose, and there are traces of shallow verdigris in a few of the protected areas on the reverse, mostly around UNITED. The crud may be removable, but it appears to be sealed under a very thin layer of wax suggesting a "Sheldonized" finish. Regardless, the eye appeal is quite nice and the "error Fraction" feature is bold. E-MDS, Breen state II. Noyes graded VF35 net VF20, photo #24032. And it comes with a very nice provenance. Ex James Wilson collection, Thomas L. Elder 10/1908:1014-Norweb collection, Bowers & Merena 11/14/88:2804 (lot ticket included)-Tom Reynolds 1/89-Dr. Harry Salyards.

1802 S-229



184. 1802 S-229 R2 VF25. Ten points sharper with traces of verdigris at UNITE. Otherwise the surfaces are smooth and quite attractive, free of notable defects. Glossy dark olive with chocolate highpoints. EDS, Breen I.



185. 1802 S-229 R2 F15. Sharpness EF45 or better but covered with fine roughness. No notable signs of verdigris, but there is a scuff of faint hairline scratches covering the face. Frosty dark chocolate and steel with reddish chocolate toning on the highpoints of the portrait and in protected areas on the reverse. The details are sharp, especially on the obverse. MDS, Breen state IV. Ex Rod Widok 3/87-Dr. Harry Salyards.

1802 S-230



186. 1802 S-230 R1 VF25. Glossy light olive and steel with traces of slightly lighter brown toning in protected areas around the portrait. Smooth and attractive. Just a few trivial marks, including a pinprick that's well hidden between the feet of the I and B in LIBERTY. LDS, Breen state IX. The die cracks at the top of the reverse are strong but not terminal. Struck with the obverse die misaligned to K-1.5. Noyes graded VF30 net VF20, photo #24216. Ex Doug Bird 5/86-Dr. Harry Salyards.

1802 S-231



188. 1802 S-231 R1 AU50. Stemless Reverse. A lustrous mint state cent that unfortunately has a few very light scratches on the obverse. The scratches are barely visible but they certainly count at this grade level. There are two scratches in the field before the portrait that tend to blend in with the die cracks located there, another from the curl under the hair ribbon to the neck just above the bust line where it fades out, and two more closely spaced ones in the field below the hair ribbon. Otherwise this cent is close to choice. Lustrous chocolate and steel delicately mottled with olive brown. Hints of lighter brown faded down from mint color can be found on both sides. A patch of slightly darker toning shows in the field under the lower end of the hair ribbon and a smaller spot of similar toning covers most of the 10 in the denominator. LDS, Breen state VIII. Noyes graded AU50 net EF40, photo #31004. Ex Doug Bird 4/92-Dr. Harry Salyards.



187. 1802 S-230 R1 VF20+. Very similar in terms of detail to the coin above, but this is a terminal die state that makes some of the details weaker. Glossy rich chocolate brown color with nice eye appeal. VF25 or higher, but with some light nicks, including some notable digs on the chin. Terminal die state with pronounced reverse die cracks and swelling at top dead center.



1802 S-232



192. 1802 S-232 R1 VF20. Five points sharper with a short scratch on the bust, a nick on the cheek, and a dull contact mark on the upper half of the T in LIBERTY. Attractive glossy medium chocolate brown and steel. No roughness or crud. Nicely struck and well centered on the planchet. E-MDS, Breen state III. Ex Dr. Bob Shalowitz 3/88-Dr. Harry Salyards.

1802 S-233



189. 1802 S-231 R1 VF20. Stemless Reverse. Sharpness that is easily VF30, but the coin has some very fine hairlines on each side and a faint blue sheen that suggests an overly aggressive brushing. Clean rims with no contact marks to speak of. Late die state, Breen VIII, with several die cracks on each side plus a tiny but distinct rim cud under the bust tip.



190. 1802 S-231 R1 F15. Stemless Reverse. Original medium brown with sharp VF20 details. A faint scratch on the bust, plus a few light digs on the obverse serve to identify this example. LDS with light, plainly visible die cracks on each side.

191. 1802 S-231 R1 G6. 1802 S-232 R1 G6. 1802 S-241 R1 G5. All three coins are 1-2 points sharper, but with defects. The S231 Stemless Reverse is VG7 net G6 for dark color and moderate corrosion; the S232 has light even porosity but brown color plus a reverse rim break at ATE; and the S241 Stemless Reverse has some minor nicks and scratches, G6 net G5.



193. 1802 S-233 R2 VF30+. Choice glossy chocolate and olive brown with frosty lighter brown and tan toning faded down from mint color showing in protected areas on both sides. Very close to VF35. No roughness or verdigris, only a few trivial contact marks. A tiny nick nestled between the feet of the N and E in ONE is a good identifying mark, but you will need a glass to see it. E-MDS, Breen state II. Ex Steve Fischer-Don Valenziano 7/89-Dr. Harry Salyards.

1802 S-234 Early Die State



194. 1802 S-234 R3 VF25. Sharpness VF35 but there is a scuff of very fine diagonal hairline scratches on the highpoints of the portrait, all blended perfectly into the glossy toning. These scratches are confined to the portrait and it takes a glass to see them. The planchet is smooth except for a few patches of extremely faint roughness on the reverse, including one above the N in ONE and another at AM in AMERICA, plus a small dusting of verdigris or crud at the second S in STATES. Attractive glossy chocolate and steel brown with traces of frosty lighter brown toning peeking through in a few of the protected places on the obverse. Nicely struck E-MDS, Breen state III, prior to any rim breaks or cuds at the top of the obverse. However, bold die clashmarks do show above the head. Many clearly defined chashmarks from the lower leaves, stems, and the fraction are located behind LIBE. The incuse impression of the denominator (1) is positioned between the B & E. However, the reverse die rotated a few degrees clockwise following the clashing so the denominator on the coin is positioned directly opposite the L rather than opposite its clashmark. Can't recall ever noticing this interesting feature before, but it's very clear on this piece. Called VF25 in the Bland census. Noyes says EF40 net VF25, photo #24170. Comes with a very impressive provenance. Ex Dr. William H. Sheldon 11/48-Judge Thomas Gaskill, New Netherlands (privately) 11/56-Dorothy Paschal, New Netherlands #50, 12/57-1193-Harold Bareford 9/13/85-Herman Halpern, Stack's 3/16/88:212 (lot ticket included)-Dr. Harry Salyards.

Terminal Die State 1802 S-234



195. 1802 S-234 R3 F15. Sharpness VF30 but the surfaces are very dark and moderately granular. No contact marks to speak of, and this is a terminal die state of the "Dripping Paint" variety, Breen VI, with all of the paint poured out of the can and onto LIBERTY.

1802 S-235

1802 S-235 Terminal Die State



196. 1802 S-235 R3 VF30. Slightly sharper but there is a horizontal nick in the hair under the earlobe and a rim bruise opposite the nose. No roughness or verdigris. Glossy chocolate brown and steel. E-MDS, Breen state III, with die clash marks over RTY but no cud breaks.

197. 1802 S-235 R3 VG10. Sharpness VF30 but the surfaces are very dark and moderately granular. Extremely rare terminal die state, Breen VII, with a rim break cud above RTY plus a sharp arcing die crack on the obverse that extends from the rim at K4 to the top of the shoulder. Noyes #23203 as VF20 net VG10 Minus and CC1 for the die state. Ex-Henry C. Hines; Homer K. Downing ANA 1952 lot 1914; C. Douglas Smith; Dr. R. A. Schuman, CVM.

1802 S-236

1802 S-236 "Doughty 12"



198. 1802 S-236 R1 VF25. Sharpness very close to EF40, but very dark, nearly black, and with light corrosion on each side. Additionally, there are a couple spots of raised red corrosion inside the wreath. Typical marks for the grade, with a slightly stronger pair of nicks under the L in LIBERTY.

199. 1802 S-236 R1 VF20+. Ten points sharper but there are several rim dents on both sides, the strongest of these off the lower curls, plus a pinprick at the dentils under the 0 in the date and another near the dentils well above the bust tip. In addition there is a tiny "12" carefully punched into the edge at K-6 under the date. This appears to have been done by "an old New England collector" who owned this piece prior to the attached provenance, and it represents Doughty's #175 (S-236) which was the 12th coin in Doughty's arrangement of 1802 cents. Difficult to believe this is a coincidence. No roughness or verdigris. Attractive glossy chocolate and light olive, the devices a shade or two lighter than the protected areas. A very nice cent if not for the contact marks, which are obvious. MDS. Breen state VI. Ex Robert LeBlanc 6/82-Denis Loring-Tom Reynolds 1/88-Dr. Harry Salyards.

1802 S-237

1802 S-238



200. 1802 S-237 R2 VF35. Beautiful glossy dark chocolate brown and olive with frosty lighter steel toning in protected areas, especially on the reverse. A choice example for the grade, virtually flawless. A light rim bruise at the first A in AMERICA is the only notable mark. MDS, Breen state VI. Struck with the obverse die slightly misaligned to K-6. Ex Paul Padget 4/89-Dr. Harry Salyards.



201. 1802 S-237 R2 F12. Sharpness better than VF30, but very dark green-brown and finely granular, with the reverse one degree rougher than the obverse. No real marks other than a small planchet flaw on the obverse rim at K8. EDS; ex-Ed Hipps.

202. 1802 S-238 R4 VF20+. Sharpness VF30 but there are several nicks scattered over the obverse, including a long vertical one in the center of the neck and several smaller ones in the field off the chin, plus a very light rim bruise under the fraction. No hint of corrosion or verdigris. Attractive glossy chocolate brown and steel. Possibly lightly cleaned and expertly retoned long ago, but the color may be original. MDS, Breen state III. Very close to net VF25 in spite of the marks. Called VF35 net VF25 and tied for CC#5 honors in the Bland census. Noyes says VF35 net VF20 and tied for CC#8, photo #33201. Ex Gothic Coin Shop 11/88-Dr. Bob Shalowitz 11/88-Jack Beymer 4/89-Dr. Harry Salyards.

1802 S-239

1802 S-240 Early Die State



203. 1802 S-239 R3 VF35. Glossy mix of tan, steel, and reddish brown. Virtually mark free with only a few obverse ties, hardly worth mentioning. A couple toning spots and a trace of crud around the first T in STATES are the only detractors worth noting. Near choice in overall appearance. M-LDS IV. Ex-Homer K. Downing Superior 2/18/02.

204. 1802 S-240 R3 VF25. Sharpness EF40 with microscopic roughness covering the fields before and above the portrait with similar faint roughness at ED-ST. A couple microscopic specks of greenish verdigris at ED-ST and a dull nick low on the neck are the only other notable defects. Frosty steel brown and chocolate. Rare E-MDS, Breen state II, before the die crack up from the bust. Called net VF25 and tied for CC8-10 in the Noyes census, his photo #39160. Ex-Walter Husak; Goldberg's 02/10/08 lot 1281.

1802 S-240 State III



205. 1802 S-240 R3 VG10. Attractive glossy chocolate and steel brown with slightly lighter brown toning in protected areas. The surfaces are smooth and this cent offers excellent eye appeal for the grade, nearly choice. A tiny pinprick near the dentils just right of the date, a nick on the ribbon right of the numerator, and a barely visible rim nick over the first T in STATES are the notable marks. LDS, Breen state III late. The die crack before the portrait is strong and it clearly reaches the rim before the face. Struck with the obverse die misaligned to K-4.5. Ex 1986 EAC Sale, lot 142 (as F12)-Dr. Harry Salyards.

1802 S-240 State VI



206. 1802 S-240 R3 F12. Sharpness a few points higher, but there are some very light scratches on the cheek, only visible with a glass. LDS, Breen IV, with a heavy obverse die crack off the bust tip, and the reverse trisected by two strong cracks that converge at the N in ONE. Excellent original medium brown color and nice eye appeal.

1802 S-241



207. 1802 S-241 R1 VF20+. Stemless Wreath, Double Fraction Bar. Sharpness VF30 or slightly better but there are too many tiny contact marks scattered over the obverse for the sharpness grade. A trio of very closely spaced hairline scratches above the bust tip ending at a pinprick in the dentils at the lower end of the scratches is the only notable mark. Attractive glossy uniform medium chocolate brown. MDS, Breen state III. The Stemless Wreath and Double Fraction Bar features are obvious. Ex Tom Reynolds 5/86-Dr. Harry Salyards.



208. 1802 S-241 R1 AG3. Stemless Reverse. VG8 details. Medium brown with darker highlights, and moderate roughness on each side. The obverse has a dozen or more sharp dents, and the reverse caught a few of these, too. Rare terminal die state, Breen V, with two bold reverse rim breaks, one above TATE and the other above F-A.

1802 S-242



209. 1802 S-242 R2 EF45. Choice glossy chocolate and olive brown delicately mixed with lighter steel brown toning on the obverse. Satiny mint frost shows through in the fields and protected areas on both sides. The only marks are a diagonal nick that skips across the highpoints of the hair above and to the left of the ear, a tiny nick in the field under the lower end of the hair ribbon, and a small planchet flake in the dentils above the R in LIBERTY. Otherwise this piece is flawless. LDS, Breen state III. Called EF40 and tied for CC#9 in the Bland census. Noyes says EF40 net VF35 and tied for CC#11, photo #23894. Ex S. S. Forrest, Jr., Stack's 9/72:569-Allan F. Lovejoy, Stack's 10/82:645-Harold Bareford 9/13/85-Herman Halpern, Stack's 3/16/88:221 (lot ticket included)-Tony Terranova 4/88-Dr. Harry Salyards.

209B. 1802 S-242 R2 VF25. Noyes #38881 as VF25 AvePlus and VERY difficult to find any defects. A very strong glass reveals a couple of nearly imperceptible scratches on the obverse, and there is a single light nick well-hidden on the lowest pair of leaves on the right. Exceptionally nice for the grade, and this one stands alone at CC18. Ex-Tom Reynolds 12/26/99; Terry Denman.

1802 NC-1 Late Die State

1802 NC-1 Early Die State



210. 1802 NC-1 R5+ VG10. Glossy steel brown and chocolate with darker chocolate brown toning covering the protected areas. The two-tone appearance adds to the eye appeal of this attractive cent. Some of the details are sharper than VG10 but there are a few small contact marks on the obverse, including several tiny nicks in the field behind the head and a small planchet void near the dentils right of the Y in LIBERTY. In addition there are several shallow patches of verdigris in protected areas on the reverse, strongest around the fraction and the N in CENT. Otherwise the surfaces are smooth and attractive. LDS, Breen state IV. The bisecting die crack on the obverse is clear from the dentils above the B down to the rim right of the date. Called VG10 in the Bland census. Noyes says F12 net VG7 and tied for CC#15, photo #24354. Ex Leonard Kusterer-Benjamin Levin 8/83-Denis Loring 8/83-Jack Beymer-Jack Robinson, McLaughlin & Robinson Auctions #4326, 9/87:295 (lot ticket included)-Dr. Harry Salyards.

211. 1802 NC-1 R5+ VG7. Sharpness VG10 with original medium brown color and decent eye appeal. Close inspection reveals several light nicks and scratches on each side, plus a very slight bend in the planchet. EDS, Breen I, before the bisecting obverse die crack but with a clear spike off the bottom of the bust just right of the 2.



212. 1802 NC-1 R5+ AG3. Smooth and virtually perfect for an AG3, with medium brown color and mark-free surfaces. FDS with just the spur off the bottom of the bust tip just right of the 2 faintly visible. Both Mike Grieman and Dan Trollan are listed on the envelope accompanying the coin

1802 NC-2
The Finest Available to Collectors



213. 1802 NC-2 R6 VF25 Plus. Breen Plate Coin. Five points sharper but there are light contact marks on both sides, including some light hairlines and tiny ticks scattered about the obverse, strongest in the hair under BE and under the earlobe, and a collection of tiny digs over EN in CENT. None of these marks is distracting and the eye appeal is very nice for the grade. The surfaces are smooth, free of corrosion or planchet flaws. Glossy dark olive brown and steel with lighter chocolate brown highpoints. The arc-shaped crack at BERTY is clear and the obverse die clashmarks are sharp. Called VF35 and CC#2 in the Bland census. Noyes says VF35 net VF20 and CC#2, photo #20780. The CC#1 example is impounded in the ANS museum, making this example the finest available to collectors by a wide margin, the next best grading only VG10 at best. This is the plate coin for the variety in the Breen book. Ex Robert Friedberg (Gimbel's coin department in New York City) 4/4/56-C. Douglas Smith 12/56-Dorothy Paschal 1/57-Dr. William H. Sheldon 4/19/72-R. E. Naftzger, Jr., 2/23/92-Eric Streiner 4/22/92-C. Douglas Smith-Dr. Robert A. Schuman, McCawley & Grellman Auctions/Superior 2/18/02:1279-Jack Wadlington (via Bob Grellman & Chris McCawley) 6/30/05; Daniel W. Holmes, Jr.; Goldberg's / M&G 09/06/09:445.

1803 S-243

1803 S-244



214. 1803 S-243 R2 F15. VF25 with original medium brown color. There are several light rim bumps on each side, plus a dull scuff under L in LIBERTY. The obverse shows a medium round patch of red patina at the center, and the reverse shows a few lighter yet rougher patches, especially at AM. LDS with a two-piece obverse rim break over TY and extending toward K2.

215. 1803 S-244 R4 F15+. Sharpness VF25 but there are a few old, light scratches in the field around the hair ribbon and a patch of shallow verdigris at STATES, strongest at STA where it has a green tint. The obverse is perfectly smooth except for the minor contact marks while the reverse displays traces of microscopic roughness in several areas in addition to STATES. The obverse is an attractive glossy medium chocolate brown, and the reverse is a slightly less glossy mix of chocolate and reddish chocolate with steel brown toning covering the devices. Not bad for the grade in spite of the defects, close to net VF20 MDS. Breen state II. Ex Jack Beymer 9-83-Dr. Harry Salyards

1803 S-245



1803 S-246



216. 1803 S-245 R3 VF35. Sharpness AU50 but there are several very shallow pitmarks scattered over the obverse, the largest of these hidden in the hair ribbon, and another under the right edge of the second S in STATES. A collection of faint hairline scratches is visible under strong magnification at TES-OF-A, but they do not detract. It's the small pitmarks that catch your eye. No trace of verdigris. Nicely retoned frosty bluish steel and chocolate blending to olive brown in protected areas. Sharply struck EDS, Breen state I. Ex 1985 EAC Sale, lot 249.

217. 1803 S-246 R3 VF30. Glossy chocolate and steel brown with hints of reddish chocolate toning in some of the protected areas. A long, thin diagonal nick in the field over the hair ribbon and a splash of darker olive brown toning at TA in STATES are notable marks. EDS, Breen state I, before the "Mumps" breaks occurs. Ex. M&G 2008 EAC Sale, 5/10/08: 367-Dan Holmes.

1803 S-247 Very Early Die State



218. 1803 S-247 R3 F15. Mumps Obverse. VF20 but recolored a dark, matte brown with some dark orange highlights. There is dull nick in the field near the obverse rim at K8, otherwise this piece is free from marks. Rare VEDS before the sawtooth develops through the denominator on the reverse.

1803 S-247 Early Die State



219. 1803 S-247 R3 Mumps Obverse F12. Very attractive glossy medium chocolate brown with slightly lighter brown toning covering the devices. No hint of roughness or verdigris, only trivial contact marks. The best identifying mark is a small nick on the rim between the I & C in AMERICA. EDS, Breen state I. This Breen die state does come unclashed, but this example has the usually-seen arc of impressed dentils through the denominator. Ex Bowers & Ruddy 6/15/81:2690-Stu Hodge 3/84-Dr. Harry Salyards. Comes with the B&R auction tickets.

1803 S-247 Early to Middle Die State



220. 1803 S-247 R3 VF20. Mumps obverse. Five points sharper with a light rim bruise at BE, a small spot of dark olive toning on the neck, and a small but obvious dig under the second T in STATES. Glossy chocolate brown. E-MDS, Breen I. The "Mumps" cud at the throat is clear. Ex-Ray Chatham

1803 S-247 Late Die State



221. 1803 S-247 R3 VF20. Mumps Obverse. VF25 sharpness, but recolored a too glossy dark chocolate brown, and with some light scratches plainly visible on the obverse. The reverse also has its' share of nicks and scratches, plus some light corrosion around RI. Extremely rare LDS, Breen III, with the two light reverse cracks mentioned in Noyes..

222. 1803 S-247 R3 G5. 1803 S-255 R1 G6. 1803 S-258 R1 VG8. The first two are mostly problem-free although not without the expected marks for the grade level. The S258 is sharper, F12, but with some obverse pitting and some reverse scratches. Lot of 3 coins.

1803 S-248

1803 S-249



223. 1803 S-248 R4 VF20. VF25 With original medium brown color. There is a collection of tiny nicks on the obverse, plus a light rim bump at obverse K7 that accounts for the net grade. EDS.

224. 1803 S-249 R2 Mumps Obverse with Corrected Denominator 100 over 000 VF30. Sharpness AU50 but the obverse was very lightly burnished, especially on the field before the portrait, and there are traces of microscopic roughness and verdigris on both sides. Very nicely retoned glossy chocolate brown with hints of reddish chocolate brown toning on the lower half of the reverse. The only significant contact marks are a dull, shallow nick on the rim left of the L in LIBERTY and another in the field well below the lower tip of the hair ribbon. This cent offers nice eye appeal in site of the imperfections. Nicely struck E-MDS, Breen state II. The reverse is rotated about 20 degrees CCW relative to a normal head-to-foot die orientation. Noyes photo #33302. Ex "Florida Collection" (possibly R. T. Grove)-Vern Lowe 1979-Stu Hodge 3/84 (who told the consignor this was his favorite early large cent)-Dr. Harry Salyards.

1803 S-249 Terminal Die State

1803 S-250



225. 1803 S-249 R2 Corrected Fraction 100 over 000 VF-20. Sharpness near EF45 but lightly corroded, strongest on the reverse where there are a few shallow pitmarks at the second T in STATES. No verdigris and only a few trivial contact marks, including a thin nick in the field off the tip of the nose. Mostly glossy reddish chocolate and olive brown. Rare **terminal die state**, **Breen state VI**, with a large cud break at the bust tip and another joining RIC to the rim above. The corrected fraction feature is obvious. Ex C. Douglas Smith-DR. Robert A. Schuman-Chris McCawley, Dan Holmes.

226. 1803 S-250 R3 VF25. Five points sharper and choice except for a short scratch from the upper edge of the hair ribbon extending into the field to the left. Glossy chocolate and olive brown. Smooth and quite attractive for the grade in spite of the scratch. MDS. Ex Mike Abbott 12/77-Dr. Harry Salyards.

1803 S-251



227. 1803 S-251 R2 VF35. Sharpness close to EF40 but there is a tiny patch of very shallow reddish verdigris in the dentils above the second S in STATES and a few light contact marks at F-A. Otherwise this cent is very nice, nearly choice. Glossy medium chocolate brown with slightly lighter chocolate toning in protected areas on the reverse. TDS, Breen state V. The upper half of the reverse die was shattered and the section at TES is a retained cud, raised on the left side and sunken on the right side. A neat die state. Ex Doug Bird 7/87-Dr. Harry Salyards.

1803 S-252



228. 1803 S-252 R2 VF35+. Sharpness EF45 but there are several very light rim bruises on the obverse, the strongest of these over the I in LIBERTY (even this one is hardly significant, and none of them was mentioned by Del Bland in his description of this cent in the 1986 Robbie Brown catalog). The only other notable marks are a couple small, shallow scrapes just left of the L, a short scratch on the upper half of the E in LIBERTY, and a few minor contact marks between the second S in STATES and the adjacent O in OF. Otherwise the surfaces are choice and offer excellent eye appeal. Beautiful glossy medium brown and light chocolate with underlying frosty lighter brown toning in protected areas. The only break in the choice color is a subtle puff of reddish toning in the field before the eye. M-LDS Breen state V, just prior to the cud break under the 18. Noyes graded EF40 net VF35, his photo #20365. An attractive cent that comes with a very nice provenance. Ex Homer K. Downing, New Netherlands 1952 ANA Sale 9/16/52:1944-C. Douglas Smith 1/27/1956 (in a trade)-Dorothy Paschal (via Ray Chatham) 1972-R. S. Brown, Jr., Superior 9/30/86:371-Herman Halpern, Stack's 3/16/88:232-Gary Ruttenberg, McCawley & Grellman Auctions 8/17/96:245-Dr. Harry Salyards. (Lot tickets for the last 3 auction sales included.)

Finest Known Terminal Die State 1803 S-252



229. 1803 S-252 R2 VF30. Terminal die state. Sharpness EF40 but nicely recolored and even dark chocolate steel. The obverse is smooth and glossy while the reverse surface is more matte. No detracting marks to speak of. This is the finest known example of the terminal die state for S-252. With a massive rim cud under the lowest curl and 18 of the date. Plated in Noyes.

1803 S-253

1803 S-253 Terminal Die State



230. 1803 S-253 R2 VF30. Sharpness EF40 with dark chocolate brown color and minutely granular surfaces, plus a trace of verdigris near the rim obverse K9. An attractive appearance for the grade. Very sharp MDS.



231. 1803 S-253 R2 VG10. Small Date, Small Fraction. A rare late die state (LDS) example, Breen VI, with a heavy rim break under 180 in the date and to the left, and with a heavy reverse die crack affecting STATE. There is another light crack between D-S to the wreath, and the top of the TED are also connected by yet another faint crack. F12 by sharpness, but there are a few heavy dents on the left side of the ribbon on the reverse, and a tiny divit near the obverse rim at K7. Nice dark brown color.

232. 1803 S-253 R2 VF25. Terminal die state, Breen VI. Sharpness close to EF. Jet black color, very slightly granular under glossy appearing surfaces. The finest known of the terminal die state with massive rim break, K6-7 obverse.

1803 S-254



1803 S-255



233. 1803 S-254 R1 AU50. Five points sharper with light brown lustrous surfaces and splashes of original mint red, but too many tiny surface nicks for the grade. None of these are substantial detractors on their own, but taken as a whole enough to be taken into consideration. E/MDS with the light crack through Liberty's drapery.

234. 1803 S-255 R1 VF35. Choice glossy chocolate brown, slightly lighter on the devices and a darker shade in protected areas. Excellent eye appeal for the grade. No trace of roughness or verdigris, and a small rim nick over the second T in STATES is the only notable sign of contact. Nicely struck MDS, Breen state III. Ex 1983 EAC Sale, lot 249-Dr. Harry Salyards.

1803 S-256



235. 1803 S-256 R3 F15. Medium chocolate brown color. With only minor marks. Very nice for the grade and as a variety surprisingly difficult to locate in any condition.

1803 S-257



236. 1803 S-257 R2 Large Fraction F12. Sharpness VF20 but the obverse is covered with myriad faint hairline scratches, all hidden in the slightly glossy dark steel and chocolate toning. The gloss is slightly subdued by uniform extremely faint roughness that is visible only under strong magnification. No verdigris. LDS, Breen state V, with a clearly raised retained cud break at STATES. Ex Paul Padget via Rod Burress 3/84-Dr. Harry Salyards.



237. 1803 S-257 R2 VG7. Attractive and original medium brown VG8 with a half-dozen TINY nicks on each side, plus a dull arcing scratch behind the lower curls on the obverse. The reverse has a dull rim bump at K7. Overall pretty nice. Late die state, Breen V.

1803 S-258



238. 1803 S-258 R1 VF20. Medium brown with lighter brown in the fields from an old cleaning. Sharpness close to EF40, but there is some light pitting present on both sides, plus a dull scuff on the obverse behind the ribbons. The pitting is one degree rougher on the reverse, plus there are some light scratches between ONE CENT. M-LDS, Breen III.

1803 S-259



239. 1803 S-259 R4 Large Fraction VF25. Sharpness close to VF30 but there is an elongated shallow pitmark or planchet void in the field under the Y in LIBERTY and traces of minor roughness at S-OE. Otherwise the planchet and surfaces are smooth and quite attractive. Glossy chocolate and olive brown blended with darker steel toning on the reverse. Traces of lighter frosty brown toning show in protected areas on the obverse. M-LDS, Breen state III late. The die crack at TAT is strong but the area outlined by the crack has not started to sink. An attractive example of this tough die variety in spite of the imperfections. Ex Bert Cohen 5/83-Dr. Harry Salyards.

1803 S-259 Early Die State



240. 1803 S-259 R4 VG7+. VG8 with some very faint scratches on both sides, plus some red patina and light corrosion mixed into the reverse. Otherwise, the coin has nice medium brown color on both sides, and decent arm's length appeal. EDS, Breen I.

1803 S-259 Terminal Die State



241. 1803 S-259 R4 G5. Rare terminal die state with the rim crack at TAT now completely broken out resulting in a massive rim cud. The first example I have seen of this massive cud. The coin is a nice light brown with smooth surfaces. Several points sharper in detail but marred by several pin scratches in front of the face. But who cares the reverse cud is the whole story with this cent.

1803 S-260



242. 1803 S-260 R1 EF45. Reflective golden tan lustrous surfaces. A scratch or struck through line extends from the B of LIBERTY through the hair towards Liberty's mouth and whether mint made or not reduces the grade by five points. Still the overall color and surfaces are appealing EDS.



243. 1803 S-260 R1 Large Fraction F12. Slightly sharper but there are traces of faint roughness on the obverse, mostly in protected areas around the portrait. The microscopic roughness is highlighted by a reddish chocolate tone while the remainder of the planchet displays attractive glossy olive and light chocolate brown toning. Two dull nicks on the neck and one more off the leaf tip under the first A in AMERICA plus myriad faint hairline scratches around ONE CENT. MDS with clear die clashmarks behind the head. Ex Tony Carlotto 3/84-Dr. Harry Salyards.

1803 S-261



245. 1803 S-261 R2 VF20. Sharpness ten points higher, but the coin is covered with a layer of black corrosion, and there is a dull dent in the left obverse field below the ribbons. The color is a combination of black, dark brown, and dull gold. E-MDS.



244. 1803 S-261 R2 Large Fraction VF30. Attractive glossy chocolate and olive brown delicately mixed with hints of lighter brown toning on the reverse. Smooth and choice except for a couple dull, very shallow scratches in the field before the portrait. E-MDS, Breen state II. A fine die crack reaches up between the 1 & 8 but it does not extend through the hair to the dentils left of the ribbon. In addition, the obverse is misaligned to K-3, which is often seen in this die state. Ex Tony Carlotto 4/85-Dr. Harry Salyards.



246. 1803 S-262 R3 VG10. Sharpness EF40 but the planchet is covered with fairly uniform moderate roughness. No verdigris or contact marks. Dark steel brown and chocolate. The surfaces are close to matte, although traces of gloss or frosty luster do show in some of the protected areas. This cent has the look of a piece that was lost in soil for a while, perhaps after experiencing little if any circulation. MDS, Breen state II. Acquired unattributed in 1964 by Dr. Thomas S. Chalkley. Superior 1/28/90:476-Gary Ruttenberg, McCawley & Grellman Auctions 8/17/96:257-Dr. Harry Salyards.

1803 S-263



247. 1803 S-263 R3 VF35. Five points sharper but there are too many very tiny contact marks scattered over both sides for the higher grade. None of these marks is significant or distracting, although a diagonal nick hidden in the curl before the ear can help identify this cent. Glossy steel brown and light olive with lots of frosty lighter brown and tan toning in protected areas on both sides. In addition, there is a puff of reddish brown toning at ERT in LIBERTY and darker olive toning at STAT. M-LDS, Breen state V, with a cud connecting the date to the rim below. Noyes graded EF40 net VF30, photo #29870. Ex Lillian Willins (via Bill Noyes) 1/11/92-March Wells 4/2003-Dr. Harry Salyards.

Rare Early Die State 1803 S-263



248. 1803 S-263 R3 VG8. A couple points sharper, but just a touch on the dark side due to very fine underlying porosity. Absolutely no marks or rim defects to speak of, just slightly below average planchet quality. Rare EDS, Breen I, with an uncracked obverse.

Mid to Late Die State 1803 S-263



249. 1803 S-263 R3 F12. Sharpness VF35 but covered with fine to moderate roughness, mostly in the form of uniform granularity. No verdigris or contact marks. Dark steel brown and olive. Mostly matte but some of the highpoints do display a bit of gloss. M-LDS, Breen state V, with the cud break at 1803. Overall this is a sharp but unspectacular cent thanks to the roughness—EXCEPT for the small “7” carefully punched into the edge under the date to indicate this is the 7th variety in Doughty’s sequence of 1803 cents (see the 1802 S-236 from the same “old New England Collection” offered earlier). In Dr. Salyards own words, “Whoever put the ‘old New England Collection’ together, it is certain that it was in the first half of the 20th Century, given that he/she used the Doughty variety sequence to number the coins; and the collection was extensive, because this collector was aware of at least two more 1803 varieties than Doughty had been—for example, lot 546 in the Jack Robinson sale, 1/89, was an S-248, a variety not included in the 19 die pairs known to Doughty, with its edge punched “21.” At the time I purchased this S-263, I also purchased a F12 S-261 (later sold), its edge punched “18”: S-261 = D-196, the 18th in Doughty’s sequence of 19 varieties for 1803.” As Dan Holmes liked to say, it’s the story that gives real value to these old coppers. Ex “old New England Collection”—Robert LeBlanc (LeBlanc Numismatics)—Denis Loring—Tom Reynolds 7/82—Dr. Harry Salyards.

Later Die State 1803 S-263

1803 S-264



250. 1803 S-263 R3 VF25. Sharpness VF35 nice medium chocolate brown color with mostly smooth surfaces, but some areas of granularity on the reverse and an old pin scratch in the obverse field from the rim K2 towards Liberty's nose. Mid to late die state but slightly later than the previous cent Breen state VI.

251. 1803 S-264 R4+ Large Date, Small Fraction G6. Sharpness F12 but moderately rough. The surfaces are uneven but there is no trace of verdigris and the color is a fairly decent and rather glossy chocolate brown with darker olive toning in protected areas. The notable marks are a pit in the field under the hair ribbon, a couple nicks at the 3 in the date, a strong rim nick at the first A in AMERICA, and a dull pinch on the rim under the right edge of the denominator. The date and legends are clear except for some weakness on the denominator (which is still readable), and on STA, which is missing due to the late die state. LDS, Breen state III. The section at STATES is a retained cud, clearly raised on the left end (which obliterates STA) and slightly sunken on the right end. Noyes graded F15 net G5, photo #29173. Ex Superior (privately) 5/73-Denis Loring-Loring PW ad 7/73 as "G6, ex Downing"-Loring 8/73 during Boston ANA-R. Tettenhorst 6/95-Dr. Harry Salyards.

1803 S-265



252. 1803 S-265 R4 F12 VF20. With medium brown color and smooth surfaces. The rims have been smoothed to lessen the appearance of several rim bumps. They should have left bad enough alone. Still the color and surfaces are good and all the detail is sharp for this popular Redbook variety.

1803 NC-1



253. 1803 NC-1 R5+ AG3. The obverse is weaker, close to Fair-2, but the reverse is a full G4, so the AG3 grade is a compromise. Of course, it is normal for the obverse to be weaker on this variety since that die was well worn and reground while the reverse die was new and crisp with more depth in all its features. The color and surfaces of this piece are choice; all it suffers from is lots of honest wear. Glossy chocolate brown and steel. The only notable mark is a dull nick extending from the tip of the bust. The lower half of the 18 is gone but the remainder of the date remains easily visible and all of the reverse is readable. MDS, Breen state II. Ex Kagin's MANA Sale 10/19/79:979-Jack Robinson 8/83-Dr. Harry Salyards.

254. 1803 NC-1 R5+ FR2. AG3 with a faintly granular planchet with very dark brown color. The obverse is covered with myriad fine scratches, plus there are some shallow dents extending behind the head to the left rim at K10. The date is faint but readable, and the obverse details are considerably stronger.



255. 1804 Altered date from 1803 S-245. At first glance, a smooth, original, medium brown 1804 with a full date. But very quickly you can see that the 4 has been crudely altered from a 3, and the work won't fool anyone but the village idiot. Another dead giveaway is the huge reverse rim break above RICA, which confirms that the host was an 1803 S-245. Medium brown.



256. 1807 S-274 R2 VF35. EF45 sharpness, but the coin has been lightly coated and is now too glossy. Rich dark chocolate brown color and the hair details are very crisp. There is some red patina on the right wreath on the reverse, plus a collection of tiny nicks on each side, none of which are notable. Del Bland EF45 net VF35 and tied for CC4; Bill Noyes #25633 EF45 net VF30 Minus and tied CC13-15. MDS, Breen III. Ex- R.L. Hughes 06/80 lot 30 to Del Bland; Jack H. Beymer 11/28/81; C. Douglas Smith; plus a Dan Trollan on the envelope.

257. 1806 S-270 R1 G6. 1807 S-271 R1 Comet G6. Both coins are VG10 net G6 for significant problems. The S270 is corroded and burnished, while the S271 is corroded, cleaned, and scratched. Both coins have full details on each side. Lot of 2 coins.



258. 1809 S-280 R2 VG10. A pleasant F12 with just a hint of light pitting on the obverse and overall fine roughness, only visible beneath a glass. There is a light scratch on the reverse crossing the wreath beneath N in UNITED. Dusky medium brown. MDS.



259. 1810/09 S-281 R1 F12. Sharpness of F15 but nicely recolored a medium dark brown. There are a dozen or so light contact marks on the obverse and even fewer on the reverse, but none of these are out of line for the grade or require singular mention. The overdate feature is bold to the naked eye. MDS.

260. 1810 S-282 R2 F12. A very attractive example with VF20 details, but the light to medium brown color belies a recoloring. There are a half-dozen dull, shallow nicks up and down in the left obverse field, while the reverse is mostly free of contact marks. E-MDS with good eye appeal.



261. 1811/0 S-286 R3 F12. VF20 details but the obverse has been burnished, giving the coin a slightly unnatural gloss on that side. Fortunately, the reverse is unmolested, although both sides do show minute signs of contact, including a couple of rim nicks on the obverse at K8 and K12. Nice chocolate brown color, and the overdate feature is clear.

262. 1811 S-287 R2 G4. An original example with nice medium brown color, but with the typical uneven strike leaving the left side of the obverse mostly smooth. The reverse is evenly struck, but shows some sharp contact marks left of ONE and beneath ITE.



263. 1812 S-289 R1 VF30. Large Date. EF40 details on a very dark brown planchet. There are some scattered areas of light corrosion on each side, including one at star 6 and another at the nose on the obverse, plus some more light patches scattered around much of the reverse rims. The heaviest and largest patch is between and below F-A on the reverse. Every single detail in the hair is bold, and most of the stars retain their centers. Very dark brown color, with some reflectivity to the surfaces. MDS, Breen III.

264. 1812 S-290 R1 G5. 1824/2 N-5 R5 AG3. 1829 N-9 G4. 1830 N-10 R4+ G4. 1845 N-9 R2 F15. The 1812 S-290 is a dark G5 with scratches, LDS; the 1824/2 N5 is F15 net AG3 damaged bent corroded with a visible overdate; the 1829 N-9 is a nice G4; the 1830 N-10 is F15 net G4 with sandpaper surfaces; and the 1845 N-9 is VF20 net F15 for some light obverse scratches. Lot of 5 coins, and quite an interesting combination.

265. 1814 S-294 R1 F12. Sharpness VF35 and a pretty nice coin, but there is a crude hole between stars 12-13, and the rim has also been pinched in that area. Looks great if you can look past that dang hole!



266. 1814 S-295 R1 VG10. Plain 4. F12+ details, but with a dark greasy brown color from a probable recoloring. There are some light scratches on each side, plus some light green pitting on the left side of the obverse. The coin shows a very pronounced double profile at the front of the bust, but no signs of doubling elsewhere. E-MDS. Ex-Superior 09/19/99 lot 457.



267. 1816 N-3 R4 F12. Sharpness VF25, but the coin has a dark, greasy look from moderate porosity. The color is nearly black, but there are just a couple of contact marks, including a tiny pinprick between stars 6-7 and a light scratch on the reverse above ONE. Strong rim crumbling above stars 8-10.



268. 1816 N-7 R3 VF25. Very pretty glossy medium brown color and strong VF30 details. A 5-point deduction for a pair of tiny contact marks in front of the neck, plus there is a tiny lamination at the obverse rim at K3. Nice color and eye appeal. LDS.

269. 1817 N-2 R3 F15. Dark chocolate brown color with glossy surfaces and VF20 details. The obverse has a couple of areas of light pitting, strongest at the neck and behind the hair buns. The reverse has a half-dozen smaller rough spots around the periphery, plus a notable rim bump above the first T in STATES. The obverse is mis-aligned toward K7-K8, and this is an early die state example.



270. 1817 N-17 R4 VG7. VG8 with contrasting dark brown fields and lighter highpoints. There are a half-dozen notable rim bumps, plus some very minor roughness on the reverse. Rare late die state with a strong reverse rim break above TATE.

271. 1818 N-1 R2 VF30. Sharpness EF45 but recolored a too glossy medium brown. There is a light layer of red patina on the obverse, but there is a significant amount of raised red, black, and green corrosion on the reverse. No major marks seen.

272. 1818 N-2 R4 G6+. ANACS graded VG8 in a small white holder. An original, dark brown example with just the finest hint of granularity, and no real marks to point out. M-LDS with a rim break over NIT that continues as a die crack to the first S in STATES.

273. 1818 N-2 R4 G6. Another certified 1818 N-2, this one in an NGC G6BN holder and in the terminal die state. Smooth medium brown with no real defects. Rare TDS with a heavy rim break over NITED and nearly reaching the first S in STATES. Ex-R.E. Matthews; Superior 05/28/89:565; Heritage 04/24/11:26014.

274. 1818 N-4 R4+ AG3. Mostly smooth dark brown with matte surfaces. The obverse has some minor roughness, and the reverse shows a half dozen scuffs inside the wreath plus a notable rim bump at F-A. But certainly all acceptable for an AG3. LDS.

1818 N-8 Double Struck



275. 1818 N-8 R3 VF30. Double Struck with Rotation in Collar. Slightly sharper with some light contact marks on the obverse, mostly on the cheek and neck. A rim nick over the second S in STATES can help identify this cent. Glossy chocolate brown with frosty lighter brown toning in protected areas on the obverse. Double struck. Both strikes were centered on the planchet but rotated 90 degrees CCW. Remnants of the first strike show in the field off the chin where the middle and lowest curl are located, and the hair bun is positioned on the bust tip. Evidence of the first strike shows on the reverse as well, mostly in the leaves under ES and UNI. The doubling is easily missed until you look for it; then it becomes obvious. EDS. Ex-Chris McCawley; Daniel W. Holmes, Jr.; Goldberg's / M&G 09/19/10:451.

276. 1818 N-10 R1 AU55. Authenticated and graded by ICG as AU58, and very close to the EAC grade of AU55. This is a nice example of a Randall Hoard variety, with glossy golden brown color and a trace of mint red on the reverse. A tiny, dull nick between star 1 and the chin is the best identifying mark. M-LDS with cracks through the stars.

277. 1819 N-4 R3 F15+. Attractive peanut butter brown with some scattered carbon spots in darker chocolate spread across the obverse. Additionally, there is a planchet lamination on the reverse beneath TATE. Expected marks for the grade, the most notable being a dull scuff beneath the E in CENT. VF25 net F15+.



278. 1819 N-5 R3 VF30. Perfect medium tan brown color with glossy surfaces and hints of underlying mint luster. There are some faint scratches behind the head that are only visible with a strong glass, and the eye appeal is overwhelmingly positive. MDS. Ex-Gary Ruttenberg; M&G 08/17/96:316.

279. 1819 N-6 R1 VF30. A nice, original medium brown example with no real marks to speak of. A strong glass reveals a few light spots of corrosion on the reverse, but these are of no consequence.



280. 1819 N-7 R4 VF20+. Authenticated and graded by NGC as VF30BN. EAC grade is VF25 net VF20+ for a few very tiny rim nicks. Medium dusky brown color with matte surfaces, and no real contact marks to speak of.

281. 1820/19 N-2 R2 F12+. Glossy medium brown color with details that suggest a higher grade. No real marks to speak of, although I do note some black scale built up within NE in ONE on the reverse. MDS, and with a clear overdate.

282. 1820 N-7 R3 VF30. EF45 sharpness with glossy medium brown color, perhaps too glossy. The obverse shows scattered light pitting, heaviest in front of the forehead, and the reverse shares that pitting plus some areas of raised corrosion as well. The pits and corrosion are light and scattered and the coin retains positive eye appeal. EDS.

283. 1820 N-9 R3 VF20. Sharp VF25 details with dark brown color. Some very faint roughness, plus some very light corrosion on each side that is mostly buried within the devices. Some light scratches on the neck are the best identifying marks.

284. 1820 N-14 R5- G6. 1824/2 N-5 R4 AG3. 1825 N-10 R3 VG8. The 1820 is VG8 net G6 for light porosity and medium rim bumps, ex-Superior / M&G 09/21/98:1380. The 1824/2 N5 is G5 net AG3 scudzy for cleaning, recoloring, and lacquering but with a clear overdate. The 1825 is VG10 net VG8 for dark porosity and many fine scratches. Lot of 3 coins.

287. 1822 N-3 and 1822 N-4, both R2 and F12. A lot of two 1822 large cents, each coin F12 with nice color and eye appeal and no problems out of line for the assigned grade.

288. 1822 N-6 R3 VF20. 10 points sharper but there is a streak of red verdigris running from star 7 across the portrait to star 12, plus a light scratch at the tip of the coronet. There is also a light patch of dark corrosion on the reverse in the wreath under AM. Nice medium brown color otherwise. There is a significant planchet clip above stars 5-6.

289. 1822 – 1831 large cents, Lot of 8 Coins. These coins are mostly problem-free and very acceptable examples that grade from G5 – VG7. Dates are 1822, 1824, 1825, 1826, 1827, 1828, and two 1831. Would make a great start to a date set.

290. 1822 N-9 R5- G4. A smooth and pleasing medium brown Good with a few light horizontal scratches on the portrait that are minor enough not to detract. A very acceptable example of a very rare variety. EDS, ex-Huff's Coins.

291. 1822 N-13 R5 AG3. The obverse is G4 with some light scratches, and the reverse is a weaker AG3 with some even light scratches. The color is an original medium brown. Ex-Tom Reynolds.



292. 1824 N-4 R2 VF30. EF40 details and expertly recolored a glossy dark brown with dark green undertones on the reverse. There is a small planchet void at the bottom of the neck, plus a few tiny rim nicks on each side, the most distracting of which is at K6 reverse. Ex-Jim Corrado 06/06/87; March Wells 02/98.

293. 1824 N-2 and 1824 N-3, both R2 and F15. A lot of two 1824 large cents, each coin F15 or a bit sharper with minor defects but still average quality and decent eye appeal.



294. 1824/2 N-5 R4 VG10. Overdate. F12 details but expertly recolored an attractive medium brown, and with a bold overdate feature. There is a reverse planchet void at D-ST that is the most obvious marker. Good eye appeal with the expected number of nicks.

295. 1825 N-6 R3, 1825 N-8 R2, and 1825 N-9 R3, all F12. A nice trio of 1825 large cents, each coin F12 or better with minor problems at best. Lot of 3 coins.

296. 1825 N-8 R2 and 1825 N-9 R3. The 1825 N-8 is an early die state, with nice F15 details. The 1825 N-9 is a solid F12. Both coins have details that border on the next higher grade, nice dark brown color, and no problems to speak of. Lot of 2 coins.



297. 1825 N-10 R3 F15. Authenticated and graded by NGC as VF25BN. Average surfaces with a tiny reverse dig beneath the E in CENT as the best identifier. Late die state with a rim break at star 7. Medium brown color.



298. 1826 N-3 R3 VF20. A solid example with nice medium brown color and lighter brown undertones. No real problems on either side – a dull scuff above ONE on the reverse is the best identifier. E-MDS.



299. 1826 N-6 R2 VF20. 5 points sharper but nicely cleaned and recolored, and the resulting sheen is just a shade away from looking completely natural. Well-struck with most stars still showing their centers, and with bold definition in the reverse leaves. A glass reveals a couple of very light scratches from star 4 to the chin and also around star 5.

305. 1827 N-5 R2 VF30+. Authenticated and graded by NGC as EF45BN, with too much wear at the top of the hair and coronet to justify that EAC grade. The color is a nice medium brown, and both sides are free of major marks. There are a couple of carbon spots on the obverse, plus a shallow patch of black verdigris off the bust tip. EDS.



300. 1826/5 N-8 R2 VF30. A nice original example with some as-struck but very notable obverse planchet flaws. These are located at star 5, running linear through stars 6-8, at star 13, and directly above the date. These are as-struck and do not affect the grade, but they do affect the symmetry and the overall eye appeal. Otherwise this is an attractive example with dark brown color, and the under-digit 5 is clearly visible inside the top loop of the six.

301. 1826 N-9 R3, 1827 N-4 R2, 1828 N-3 R2, and 1829 N-10 R1, all VG10. Four very nice, solid coins with VG10 or better details. Only minor defects can be found here, and overall this is a nice grouping. Lot of 4 coins.



302. 1826 N-9 R3, 1828 N-6 R1, and 1829 N-2 R2, all F12. Another nice grouping of dates, this one a grade higher at F12. Solid coins, with defects that do not exceed the grade. Lot of 3 coins.

303. 1827 N-2 R3 F15. A very pretty medium brown VF20 with nice eye appeal. The obverse is mostly problem-free, but the reverse exhibits several light scratches directly above 'CENT'. These are light and shallow, and require a glass to see. Attractive color.

304. 1827 N-4 R2 VF25. Dark chocolate brown color with VF30 details. The obverse is mostly problem-free, but the reverse has a half-dozen areas of raised red verdigris, the strongest of which is concentrated beneath STA. The verdigris probably won't come off easily, but it takes a glass to see it clearly, and the overall eye appeal is still quite nice.

306. 1827 N-10 R4+ F15. Sharpness VF25, but the coin has been recolored a very dark brown with green undertones, and the surfaces are lightly porous. The toning hides several light and long scratches in front of the face. The reverse is mostly mark-free except for a sharp dig at TE in UNITED.



307. 1827 N-11 R1 VF35. Impeccably recolored a gorgeous mottled golden brown. Strong EF40 details, with a 5-point deduction for a planchet lamination that involves star 1, the chin, and the field in-between. No real marks to list, and very nice eye appeal. MDS.



312. 1828 N-6 R1 VF20+. Nice details and attractive medium brown color. A layer of Care or Blue Ribbon remains on the surfaces, which are mostly mark-free. The most notable defect, and it requires a strong glass to make out, is a couple of very light scratches beneath CENT on the reverse. But that is being very picky. E-MDS.



308. 1827 N-12 R5 G5. F15 but dark and moderately corroded with the look of a piece that was buried for a long time. The surfaces are rough from the corrosion, but all details are still visible, and there are no additional signs of contact on the surfaces or the rims. MDS with a plain die crack through 18.

313. 1828 N-6 R1 VG10. 1852 N-6 R2 VF20. The 1828 starts with VF25 details but it is black and evenly corroded with a greasy appearance. The 1852 is a nice original VF25 with a dull scratch from the date to star 2. The scratch is not bright, but it's still visible to the naked eye. EDS (a). Lot of 2 coins.

308. 1828 N-2 R2 VF20. Choice medium tan brown color with a light dusting of black carbon here and there, giving the coin an appealing "crusty" look to it. Perfectly centered with sharp rims on both sides, and there are no singular marks.



309. 1828 N-4 R4 G6. F15 details with evenly granular surfaces. Cleaned and repainted, but the paint color chosen was a nice peanut butter brown. There are several light scratches on the obverse, and while they are somewhat hidden by the roughness and the recoloring, they are still plainly visible to the naked eye. Ex-Jim Corrado; Robert E. Matthews; Superior 05/28/89:673.

314. 1828 N-10 R1 VF35. Small Wide Date. EF45 sharpness, but unevenly recolored and with very fine scratches on each side that are only visible with a very strong glass. The coloring is even on each side, but very different front to back. The obverse is a pretty medium tan and lustrous, but the reverse is a much different but equally attractive mottled sea green. A single nick on the cheek.

310. 1828 N-5 R2 AG3. Nice original medium brown color and VG7 details. Unfortunately, this example has a light tic-tac-toe board scratched on the cheek, and four sharp cuts into the reverse rims that are evenly spaced at K1, K4, K7, and K10. On the plus side, this is a terminal die state with a reverse cud at TED, and despite the problems, the coin still has a very natural color and decent look about it. And who doesn't love cuds?



311. 1828 N-5 R2 G4 TDS. 1835 N-10 R4+ AG3. 1850 N-24 R4+. A lot of 3 coins, each with significant problems. The 1828 is VG8+ but corroded, and with black and pink color. On the plus side, it's a terminal die state with the reverse cud at TED. The 1835 is a G6 with heavy scratches on both sides, plus significant rim damage. The 1850 is nice at first glance, but has several light obverse scratches, VG10 net G5. Lot of 3 coins.

315. 1828 N-11 R2 VF35. Lustrous AU50 but with some very strong obverse scratches directly in front of the face. The obverse is a gorgeous, lustrous golden brown, and the reverse is the same plus a pretty electric green in the top right third. Very attractive, but the scratches are a definite distraction.

The 2012 EAC Convention Sale, May 5, 2012

316. 1828 N-12 R3+ VG10. Sharpness VF30, but the coin is black and greasy from moderate corrosion. Additionally, there are some light scratches on the obverse, accompanied by an attempted puncture left of star 7. The reverse has some similar damage at the corresponding spot at K6. Ex-John D. Wright 07/16/76; Thomas S. Chalkley; Superior 01/28/90:696.



317. 1829 N-1 R3 EF45. Authenticated and graded by NGC as AU58BN, with "N-1 Ron Adam Collection" on the insert. Not much wear, but no luster either, hence the EAC grade. No marks worth mentioning, and the reverse is rotated 30 degrees CCW. Ex-Ron Adam, Superior / M&G 09/05/04 lot 839.

318. 1829 N-4 R4 G5. 1829 N-7 R3 G5. 1829 N-9 R4 G6. An interesting trio of 1829 large cents. The N-4 is a late die state G5 and quite nice. The N-7 wheelspoke is VG8 net G5 for moderate corrosion. The N-9 is an E-MDS example and a nice solid G6. Lot of 3 coins.

319. 1829 N-5 R3 G5. 1829 N-7 R3 G5. 1829 N-8 R3 VG7. Another trio of 1829 dated coins. The N-5 is a decent G5 but cleaned. The N-7 wheelspoke is dark with light corrosion. The N-8 is a nice VG7 but cleaned. Lot of 3 coins.



320. 1829 N-8 R1 EF40. A very attractive EF40 with nice color and eye appeal. Just a couple of tiny nicks on the obverse on the lower neck and at the top of the hair. Late die state with two small obverse rim breaks at stars 7-8 and 9-10, plus a small reverse break at CA.

321. 1829 N-8 R1 VF30. Excellent medium tan brown color, and nearly choice in terms of color, surfaces, and eye appeal. Did I mention this one is purdy?

322. 1829 N-8 R1 VF20. Expertly recolored a pretty medium dark brown. MDS with only a few very tiny nicks on each side.



323. 1830 N-1 R1 VF25. Probably recolored, but the finished product is so gorgeous that nobody will care. Perfectly contrasting peanut butter and chocolate color and no marks to speak of. M-LDS.

324. 1830 N-2 R2, N4 R2, and N-8-R1, all F12. A very nice trio of 1830 large cents. The N-2 and N8 are nice originals, and the N-4 is slightly sharper but with a blue sheen from an old cleaning. Lot of 3 coins, all 1830.

325. 1830 N-4 R2 VF20+. At least 5 points sharper, but cleaned and recolored, and the final product is just a shade too bright and with a little too much gold. No contact marks to speak of. Just plant inside a Kraft envelope and give it plenty of direct sunlight.



326. 1830 N-6 R4 F15. Medium Letters. Impressively recolored a rich even dark chocolate brown. A strong glass reveals a few light nicks on the obverse, but for the most part this one is problem-free. MDS.



327. 1830 N-7 R3 VF25. Glossy chocolate and medium brown, the obverse delicately woodgrained. The surfaces are smooth and satiny, virtually flawless. A tiny rim nick over the left side of the U in UNITED is the best identifying mark. MDS.

The 2012 EAC Convention Sale, May 5, 2012



328. 1830 N-8 R1 VF35. Expertly cleaned and recolored – the obverse is perfect medium tan brown, but the reverse has a little bit of blue sheen and some underlying brightness. There is a streak of dark carbon from star 12 to the hairbun, but no signs of contact. MDS.



329. 1830 N-10 R4+ VF20. An early die state example with the reverse crack at ATEs very light. VF25 sharpness, close to VF30, but with some light scratches on the obverse running intermittently clockwise from K12 to K6. The reverse has even heavier scratches centered around ONE CENT. Nice medium dark brown color with lighter undertones.



330. 1830 N-10 R4+ VG10. Another early die state example, this one with F12 details and too many light contact marks for the grade. None of these are worth mentioning, aside from a prominent rim nick at star 6. Attractive dark brown fields with lighter highpoints.

331. 1830 N-10 R4+ G4. G6 details, but cleaned and now with a dark bluish sheen. The coin has light corrosion and significant contact marks on each side, plus it is slightly bent. Ugly but rare. Ex-M&G 09/13/97:510.

332. 1831 N-1 R1 F12. 1837 N-5 R2 F15. 1837 N-15 R3 VG7. The 1831 has nice tan brown color but light scratches on the face. The 1837 N-5 has been cleaned but has almost recovered. The 1837 N-15 is a nice VG7 in a late die state. Lot of 3 coins, all pretty decent.

333. 1831 N-2 R2 F12+. 1832 N-1 R2 F15. 1837 N-12 R3 F15. A trio of three nice coins, minor problems but still average examples and decent for the grade. The 1837 has especially nice tan brown color. Lot of 3 coins.

334. 1831 N-5 R4 VG7. 1834 N-6 R3 G6+. 1835 N-3 R3 VG7. 1838 N-4 R2 VG7. Another nice grouping of low grade large cents with minor problems that are not out of line for the assigned grades. The 1834 has a double profile, and the 1838 is in a LDS, Breen V. Lot of 4 coins.



335. 1831 N-6 R1 MS60+. Lustrous medium-dark brown with green tinges. Close scrutiny shows a tiny scratch on the chin plus a little nick at star 9, but they are each very minor. MDS with minor crumbling in the dentils at ER in AMERICA.



336. 1831 N-6 R1 EF45. Attractive glossy medium brown and dark chocolate color from an expert recoloring. There are some tiny nicks on and before the portrait, while the reverse has a few small streaks of darker carbon. Very nice eye appeal. E-MDS.

337. 1831 N-6 R1 VF30. VF35 and nicely recolored medium brown. There is a tiny dent above star 13 that is the best marker. Chatter double-struck reverse with clear doubling at the left side of the wreath. MDS.



338. 1831 N-12 R1 EF40. EF45+ sharpness with nice medium color and good eye appeal. Take off 5-points for a few areas of light green verdigris on each side, plus a couple red spots on the obverse. EDS before the harpoon or the whale, and a very attractive example.



339. 1831 N-12/2 R6 FR2. 1 Star Cud / 3 Points. A smooth, original medium brown example that has been crudely holed at the top of the hair, and the hole is about the size of a BB. Otherwise a nice example of a rare die state.



340. 1831 N-12/2 R6 AG3+. 1 Star Cud / 3 Points. Another smooth original G4 with medium dark brown color. Just a slight deduction from some tiny nicks at the date plus a couple stronger ones in front of the brow. Nice color.



341. 1831 N-12/4 R4 G6+. 2 Star Cud / 8 Points. The terminal die state, affectionately referred to as the "Harpooned Whale." This is an original example with medium brown color and good eye appeal. It appears that somebody started to change the E in CENT to a U but stopped just short of the full felony. Otherwise this one is very nice for the grade. A pronounced double profile and an impressive pedigree add to the resume. Ex-Elder 12/06/24 to Henry C. Hines; WCB 09/76. What appears to be a small white Hines envelope accompanies the coin.



342. 1832 N-2 R3 VF35. VF35+ with pretty medium brown color over glossy surfaces that show a hint of underlying mint luster. There is a shallow scratch on the head plus a tiny reverse rim bump at K12, but each is minor. An attractive example of the scarcest 1832.

343. 1832 N-2 R3 VF30. EF40, mostly dark brown but with some green undertones. 10-point deduction for a small spot of corrosion in the wreath beneath ES on the reverse. Otherwise mark-free with clean rims.

344. 1832 N-3 R1 VF30. A very attractive example with nice color and eye appeal. The obverse shows a strong double profile, while the reverse is rotated clockwise to K7.

The 2012 EAC Convention Sale, May 5, 2012

345. 1832, 1835, 1836, 1837, and 1837. A lot of 5 large cents, each one VG8 or better, and a rather nice grouping of virtually problem-free examples. Lot of 5 coins.

346. 1833 N-2 F12. 1833 N-3 VG10. 1838 N-7 F12. 1838 N-10 F12. 1839 N-4 VG10. Another nice grouping of mostly problem-free and pleasing coins. The 1839 is the Silly Head variety. Lot of 5 coins.

347. 1833/2 N-4 R4 VF20. Nicely recolored a very glossy mixture of medium and dark brown. There is a tiny attempted puncture at star 7 which does not appear to have affected the reverse. VF35+ net VF20, and MDS; Ex-Matthews Money Tree.



348. 1833/2 N-4 R4 EF40. Authenticated and graded by PCGS as AU50. A crusty original example with perfect medium brown color. A tiny nick or two can be found on each side, but otherwise this one is problem-free. Great color, but could definitely use a bath. E-MDS.

349. 1833 N-5 R1 EF40. A glossy and attractive example with underlying mint luster and no real marks to speak of. MDS with light die cracks on both sides. Medium golden brown.



350. 1833 N-6 R1 VF30. VF35 with choice medium tan color and just a couple spots of carbon on each side. Only minor nicks for the grade, but enough to knock off 5 points from the VF35 details. MDS with strong reverse die cracks, but the crack through N in UNITED is not yet "heavy."

351. 1833 N-6 R1 VF30. Sharpness of EF45 on a very dark brown planchet. There is some light pitting on the obverse which gets a little heavier on the reverse. MDS, and the reverse is rotated 105 degrees CW, which is the largest rotation seen. Unevenly struck, with strength on the left obverse and weakness on the right.



352. 1834 N-1 R1 VF35. EF40 with really pretty medium tan brown color that seems so common to 1834's. 5-point deduction for a few too many tiny nicks on the obverse, plus a spot of light verdigris at star 4. Small 8, Large Stars, Small Letters.



353. 1834 N-2 R1 VF30. Another 1834 with impeccable tan brown color. There are a few nicks and scuffs on each side, but they are so minor that the great color makes you forget all about them. MDS. Small 8, Large Stars, Small Letters.



354. 1834 N-5 R5 F15. Yep, this is the RARE one. Large 8. Large Stars, Medium Letters. A gorgeous woodgrained example with peanut butter and chocolate color. VF20 but there is a strong scratch from the cheek to the lower hair. Very nice eye appeal despite that. MDS.



Donated Lot



355. 1834 N-5 R5 AG3. Donated Lot – All Proceeds to EAC. Yep, this is the RARE one. Large 8, Large Stars, Medium Letters. VF35 details with nice medium brown color, but the coin is evenly granular, and there is a big dent from star 1 into the cheek that bulges the reverse outward. A donated lot from Dennis Fuoss, with all proceeds to EAC. If you don't like the coin, then bid anyway for Dennis – EVERYBODY likes him!



356. 1835 N-1 R1 VF25. Nice chocolate brown color. Nice surfaces. Nice details. Nice eye appeal. Nice pedigree to EAC 1998 lot 307. Do you get the idea? Put in a NICE bid!



357. 1835 N-2 R3 G6. Mint Error. The first strike was 10-15% off-center toward K5, which means the date is not visible (kudos to whoever attributed this bad boy). The second strike was a tab brockage that left a tiny area of incused denticles at reverse K11. A great mint error, and a great low grade example with smooth surfaces and original color.



358. 1835 N-4 R4+ VG10. Sharp VF20 but there are a collection of strong contact marks on the obverse, including a deep one off the chin. Dark brown fields with lighter highpoints. The reverse is problem-free. MDS.

359. 1835 N-4 R4+ VG8. Double Profile. A point or two sharper but there are too many tiny nicks for the higher grade. Mostly glossy dark olive and steel. MDS showing a fine double profile. Ex-Floyd T. Starr. Stack's 12/04/84:1719; Jack Robinson; Superior 01/29/89:1037; CVM; EAC 2007 #437.

360. 1835 N-6 R1 VF35. EF40 but cleaned and recolored, and some lighter undertones and unnatural gloss give the coin away. Only minor contact marks, and each side has a few spots of darker toning. Very close to a natural appearance: needs Kraft paper and some sun.

361. 1835 N-7 E-MDS VF35. 1835 N-7 LDS (N-17) VF30. The EDS coin has EF45+ details but some very light scratches on both sides. The LDS coin (which makes it N-17) is a nice solid VF30. Lot of 2 coins, both 1835 N-7/17.

362. 1835 N-8 R1 VF25. 1835 N-14 R2 VF20. The N-8 is EF40 net VF25 for dark color and minor roughness. The N-14 is VF25 net VF20 for minor nicks but nice color. Lot of 2 coins.

363. 1835 N-9 R4 VG7. Large 8 and Stars. An average VG7 with some light nicks on the cheek, plus some tiny reverse rim bumps and a couple more light nicks. Original brown color. EDS; ex-Superior 09/21/98:1578.

Terminal Die State 1835 N-9



364. 1835 N-9 R4 VG7. A rare terminal die state with just 4 known examples. The obverse has a huge rim break at K2-K4, and the reverse has an even larger break from K3-K5. VG8+ with a net to VG7 due to some heavy contact marks at stars 5-6. The reverse is rotated 50 degrees clockwise.



365. 1835 N-10 R4+ VG10. F15 sharpness, with a couple of worn-down scratches on the obverse and some shallow but fresher scratches between ONE CENT on the reverse. A nice mixture of medium and dark brown color. E-MDS, and the reverse is rotated 30 deg CW.



366. 1835 N-10 R4+ VG8. Glossy light chocolate brown with darker olive toning in protected areas. Smooth surfaces, the only notable mark a reverse rim bruise at K9. MDS, with the die crack at D-STA strong. Ex-EAC 2007 #443.



367. 1835 N-11 R4+ G6. Nice glossy medium brown with some darker toning on the reverse. The obverse has a small spot of black scale at star 4, and the reverse has a matching spot at CA. E-MDS, with nice eye appeal.



368. 1835 N-11 R4+ G4. Another very nice low grade example with smooth surfaces and nice color. The only drawback is the date, which is very faint on this example. E-MDS. A couple of tiny nicks on each side, but nice for a G4.



369. 1835 N-11 R4+ G4. Yet another 1835 N-11, but this one a terminal die state with a strong reverse rim break from the U in UNITED to the right, ending directly beneath the wreath. VG8 details, but the rims have been crimped in about a half-dozen places, and the planchet is no longer perfectly round. Overall chocolate brown, but there is a clear spot of red corrosion on the reverse at CA. Ex-Tom Reynolds 07/17/07.

373. 1836 N-2 R2 AU58. A lustrous mint state cent that has a few too many tiny ticks on the portrait for a mint state grade. A thin vertical nick close before the center of the nose is a good identifying mark. Lustrous medium brown with traces of mint red showing on both sides. The fields are satiny and the cent offers solid mint state eye appeal. M-LDS.

370. 1835 N-14 R2 VF20+. Gorgeous medium tan brown and virtually choice for the grade. The only defect are some light, and I mean LIGHT, scratches underneath TA that require a strong glass to make out. LDS with a light crack through the tops of AME.



371. 1835 N-16 R2 EF40. Very pretty tan brown color and strong EF details. There is a pronounced double profile, and the most significant mark is a dull nick right off the lips. MDS. Great color and eye appeal.



372. 1835 N-19 R5 VG10. F12 with nice medium brown color but with somewhat mushy definition. There is some red patina around stars 4-7, and this same red covers more than half of the reverse. F12 net VG10 and with nice eye appeal despite the red discoloration.

374. 1836 N-3 R1 MS63. A bold mint state example with red cartwheel luster on the obverse. The reverse also retains a lot of mint red, but with some light brown moving outward from the center. Some tiny nicks can be found but overall the surfaces are excellent. From the Halpern sale in 1988 where it was called MS65. Noyes #30082 as MS63 and tied for CC2 for the variety. Ex- Essex Institute Sale, Stacks 02/75:205; H. Halpern, Stacks 03/88:460; JR Frankenfield lot 1116.

The 2012 EAC Convention Sale, May 5, 2012

375. 1836 N-6 R2 VF30. Sharpness EF45 but the coin has been lightly whizzed and then recolored a glossy dark brown. Only tiny nicks visible on each side. M-LDS with a pronounced obverse rim break at stars 7-8.

376. 1836 N-6 R2, 1837 N-8 R1, and 1837 N-10 R1, all graded VF25. A very nice, solid trio with strong VF25 details, original surfaces, and each with a slightly different but very nice color. Lot of 3 coins.



378. 1837 N-3 R1 VF35. Very nice, original medium brown color with some red toning on the obverse. A glass reveals a tiny nick beneath the eye, plus a half-dozen even tinier nicks inside the wreath. Good eye appeal.



379. 1837 N-8 R1 AU50. An E-MDS example with the reverse die crack through STATES OF clearly visible. Pretty lustrous light medium brown color, with some spots of darker carbon on the obverse and a larger streak on the reverse. Hard to find any nicks.



380. 1837 N-10 R1 MS60+. Authenticated and graded by NGC as MS64BN, and certified by CAC as premium for the grade. EAC grade MS60+, with nice light tan brown color and satiny, mostly subdued mint luster. A LDS example with a thin rim break under 837 in the date extending right to below star 13. No marks to be found on either side.

381. 1837 N-10 R1 VF35. Sharpness 10 points higher, but the coin has been recolored and the surfaces now show some glossy "swirling" in the patina, especially around the obverse stars. No contact marks to speak of; medium brown.

382. 1837 N-13 R2 VF35. Pretty light brown with glossy surfaces. EF40 but with a tiny rim bump at obverse K9. Only tiny surface nicks that require a strong glass to see.

383. 1837 N-14 R2 VF35. Very dark brown with reflective surfaces. The obverse is mostly smooth, but there is some minor roughness just outside the wreath on the reverse. Some light contact marks on the portrait and off the chin, but nothing out of the ordinary. Authenticated and graded by NGC as AU55BN. Ex-George Ramont 02/28/77; Jules Reiver; Heritage 01/25/06:20087. MDS.

384. 1838 N-7 R1 VF35. Glossy dark brown with a tiny nick on the jaw and no real defects. MDS. Ex-John Ward 11/02.



385. 1838 N-8 R1 AU50. Housed in an ancient, small PCGS holder as MS61BN. EAC graded AU50 with light wear on the highpoints. Years of encapsulation has subdued the mint luster, which would probably liven back up with a brushing. EDS. Mark-free surfaces.



386. 1838 N-8 R1 AU50. Glossy medium brown color with a hint of woodgrain on the obverse. There are a few nicks on the obverse, particularly on the lips and near stars 2 and 3, and the reverse shows a singular nick left of the O in ONE. LDS, heavily lapped.

387. 1838 N-9 R3 VF20. 1839 N-3 R1 VF25. Both coins are slightly sharper but have been cleaned and recolored, and they display some unnatural golden gloss. The 1838 is LDS with rim breaks at the date and star 12. The 1839 is EDS and a Head of 1838 type. Lot of 2 coins.



388. 1838 N-11 R2 EF40. M-LDS with heavily lapped dies. Very glossy medium brown, with a couple of spots of darker carbon on the reverse, one above ONE and one below CENT. Only tiny nicks on either side, and these require a very strong glass to make out.



389. 1838 N-11 R2 VF20. Terminal die state with a strong rim break at stars 1-2. VF30 details with dark, greasy brown color that shows minor roughness and a mixture of red and black in the patina. The obverse also shows a few light scratches visible with a glass.



390. 1838 N-11 R2 F12. Terminal die state with a strong rim break at stars 1-2. VF20 with dark chocolate fields and lighter brown highpoints, giving the coin an attractive contrast. Net graded to F12 due to VERY light granularity. Ex- Joe Dooley; M&G 01/11/97:431a.

391. 1838 N-12 R2 EF40. 5-points sharper with rich medium tan brown color and glossy surfaces. There is a tiny nick between the nose and star 3, plus some light black corrosion above that same star. Very nice eye appeal and very nice for the grade.



392. 1838 N-16 R5- VG7. Sharpness VG10, with a 3-point deduction for some faint scratches at the date and a few tiny rim nicks on the reverse. An original look with nice medium brown color plus a well-blended streak of darker brown on the reverse. Typical for the variety, the portrait and wreath are bold, but the stars and outer legends are very weak.



393. 1839/6 N-1 R3+ G6. VG10 with a host of minor problems. These included a recoloring, a dull dent at star 1, a stronger dent between stars 7 and 8 that has just barely affected the reverse, and some scratches inside the 9 that have carved it out into a 0 rather than a 9/6. Dark brown and probably looks better than it sounds. MDS with the left obverse crack faintly visible.

394. 1839/6 N-1 R3+ FR2. G6 details with medium brown color, but the planchet is sharply bent and also covered with scattered nicks and dents on each side. The date is bold and the overdate feature is plainly visible to the naked eye. EDS.



395. 1839 N-2 R2 BS1. Mint Error. Triple struck, leaving the planchet oblong and slightly bent. Perhaps G5 by details, and fortunately the date is still clear although the rest of the obverse is mostly smooth. The evidence of the multiple strikes is plainly visible on the reverse, and there is also evidence of a brockage strike due to some incused lettering near the U in UNITED. An interesting error, one that deserves more study. Head of 1838 type.



396. 1839 N-5 R2 VF25. Booby Head. Choice tan brown color, but the surfaces show some tiny nicks that keep it from full choice status. Fantastic eye appeal. LDS; ex-Bill Yates 05/03.



398. 1839 N-6 R2 VF30. Booby Head. Cleaned and recolored, with some underlying rainbow among attractive peanut butter and chocolate brown color. A few too many nicks for the grade, especially on the obverse. VF35 net VF30. Ex-1981 EAC 05/02/81:316 as N-13; John M. Ward, Jr. 02/02. M-LDS.

399. 1839 N-11 R1 VF35+. Booby Head. Exceptionally nice color, surfaces, and eye appeal, choice for the grade.

400. 1839 N-12 R4 VG7. Booby Head. Very nice medium brown color with VG8 details. Myriad tiny nicks cover each side, nothing too obvious, but too many of them for the grade. MDS with a faint crack from star 4 to the nose.

401. 1839 N-13 R2 EF40. Booby Head. Authenticated and graded by NGC as AU58BN. Very dark and glossy from an even recoloring. EAC grade EF45 net EF40 due to a half dozen small patches of roughness from light corrosion. M-LDS.



402. 1839 N-13 R2 EF40. Booby Head. Choice tan color with bold AU50 details and abundant mint luster throughout. The grade is limited by some very fine scratches on the obverse, plus some slightly stronger ones on the reverse, especially beneath CENT. This one would be great otherwise. MDS.

405. 1840 N-3 R1 VF25. Small Date. EF40 details on a greasy dark brown planchet. Light corrosion can be found on each side, but the rims are intact and there are no marks to speak of. LDS (c) with light die cracks encircling most of the obverse.



406. 1840 N-6 R1 MS63+. Large Date. Gorgeous light medium brown with cartwheel luster abounding from each side, as well as some underlying mint red. Marks are hard to come by, but I do note a dull scuff between star 3 and the chin, and a tiny pit near the bottom of the neck. MDS and a premium example.

407. 1840 N-6 R1 VF30. Large Date. Pretty medium brown color with some gloss. Some tiny tiny nicks can be seen on the obverse, plus there is a shallow pinprick between D-S on the reverse. LDS, (c).

The 2012 EAC Convention Sale, May 5, 2012

408. 1840 N-7 R3 F15+. 1842 N-3 R3 VF25. 1842 N-6 R1 VF20. The 1840 is VF20 net F15+ for nicks, MDS (b). The 1842 N-3 is MDS (b), EF45 net VF25 for corrosion and recoloring, now a strong green color. The 1842 N-6 is VF25 net VF20, MDS (b), recolored with a rim bump. Lot of 3 coins.



409. 1840 N-8 R1 MS63+. Large Date. Mint red fading to bluish steel brown, half the mint color remaining, 40% on the obverse, 60% on the reverse. The surfaces are satiny and offer outstanding eye appeal. The only defects are an extremely faint scuff at the dentil tips from star 6 to star 8 (visible only with a strong glass) and small spots of reddish chocolate carbon inside the top of the R in AMERICA and at the dentils just past the second A. None of these defects is at all distracting, but they keep this piece from Gem status. LDS, d, with a series of relatively strong rim cud breaks from star 8 to star 13. A beautiful cent, tied for CC4 of the variety. Ex-2005 EAC lot 466; Tom Turissini; 2008 EAC 05/10/08 lot 537;

410. 1841 N-3 R2 VF20. Authenticated and graded by ANACS as EF40 in an old small white holder. EAC grade VF30 net VF20 for too many obverse nicks and a tiny rim nick above OF on the reverse. Recolored a glossy medium dark brown. LDS (d).



411. 1843 N-9 R3 VF35. Recolored a glossy dark brown blended with dark red on the obverse. The reverse has some red too, but the red is concentrated in a couple of spots. Typical contact marks. EF40 net VF35; MDS (b).

412. 1844 N-5 R1 VF30. Original medium brown color with a little bit of gloss. There are a couple of tiny rim nicks on the obverse, plus the expected number of nicks. M-LDS (c).

413. 1844 N-5 R1 VF25+. Nice medium tan brown color with only tiny nicks on either side. LDS (d) with a strong cud on the obverse rim from K6-K7. Very nice color.



414. 1845 N-5 R1 EF45. Pretty medium tan brown color with underlying luster. AU50 with very little wear, but a 5-point deduction for a couple of tiny nicks in the field behind the head. E-MDS (a). Ex-Lester Merkin 09/25/70:124; Robbie S. Brown, Jr.; M&G 01/07/95:590.



415. 1845 N-5 R1 VF35. EF40 with nice medium tan brown color and mostly matte surfaces. There are a few tiny nicks on each side, including a dull, shallow scuff on the cheek. MDS (b).

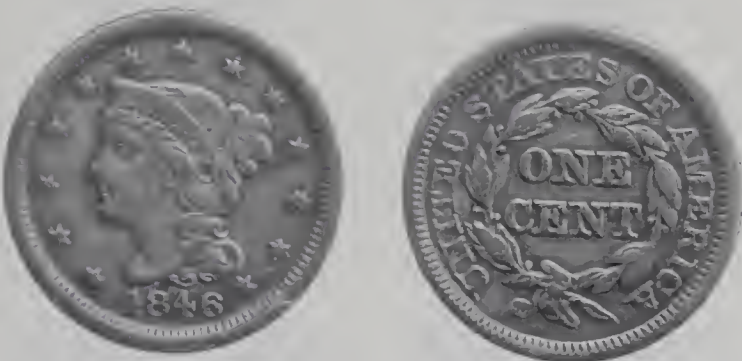


416. 1845 N-7 R5 VF20. Attractively recolored a mottled peanut butter and chocolate brown. VF30 with some light contact marks on each side, including a well-hidden scratch behind the eye. There are also a couple of areas of light black verdigris on the reverse, but these problems all seem very minor. Ex-Jack H. Robinson; Superior 01/89 lot 1258. MDS (b).

417. 1845 N-8 R1 VF25+. **1846 N-3 R2 VF30.** The 1845 is E-MDS (b) with VF30 details and some tiny nicks. The 1846 is a flatly-struck E-MDS (b) in solid VF30. Lot of 2 coins.



418. 1846 N-3 R2 VF30. VF35 with medium brown color but covered with a splotchy layer of black verdigris on each side. Most of this is evenly distributed, but there is a notably larger spot around star 3. Still attractive. LDS (e) with a reverse rim break at TES-OF, and CC11 for the die state.



419. 1846 N-7 R3 F15. Medium glossy brown color with a hint of horizontal woodgrain. LDS (d) with a notable obverse rim break at K5. Marks expected for the grade, with a little pile of them around star 12.

420. 1846 N-16 R5- VF20+. VF25+ with very nice medium tan brown color. Net VF20 for a light scratch on the top of the rim above star 6 and for a tiny spot of red patina under the date. Grellman die state (a).

421. 1846 N-16 R5- VG8. Sharpness VG10 with medium brown color, but with some black verdigris in the crevices on each side. The obverse die is slightly mis-aligned. MDS (a).

422. 1846 N-21 R5+ VG7. VG10 details but very dark brown color with some light pits on each side, but mostly above ONE on the reverse. EDS (a) and a very tough variety.



423. 1846 N-25 R5 VG10. F15+ with some short, notable pinscratch digs on the neck and some smaller ones between stars 6 and 7. Dark brown fields with slightly lighter highpoints, and a glass reveals just a hint of porosity. Housed in a small white ANACS holder as VF details net F12. MDS (b).

424. 1846 N-25 R5 G6. A nice example with average medium brown color and just a bit of black verdigris in the reverse crevices. A light rim bump at obverse K2 but no major marks. LDS (c).

425. 1846 N-26 R5 G6. Great looking at first glance, but the coin has been bent and then straightened. There are a couple of notable nicks on the portrait, plus some minor black verdigris on the reverse. Despite all that, the arms-length look is still positive. EDS (a).



426. 1847 N-3 R3 EF45. A very nice example with dark tan brown color and bold details. Plus a cool LDS (e) with three small reverse rim breaks at K10, K1, and K4. Tied for CC7 for die state (e).

427. 1847 N-3 R3 VF30. Another great medium tan color coin with EF40 details but with too many tiny contact marks on the obverse, especially on the portrait. MDS (c).

428. 1847 N-7 R2+ VF20. AU50 details but the surfaces have been etched with acid, leaving very light pebbling on each side. Additionally, there are some notable contact marks on the neck and around star 7, plus two notable rim nicks on the reverse at K6 and K10. M-LDS (b) with a rim break under star 1.

429. 1847 N-7 R2+ F12. F15 details but cleaned, some light obverse scratches, and some glue residue on the reverse. Not as bad as it sounds. LDS (e) with three obverse rim breaks at stars 8, 11, and 12.

430. 1847 N-10 R3 VF25. 5 points sharper but nicely recolored a dark brown. The recoloring is well done and even, but just a shade off on the reverse. No marks to speak of. EDS (a).



431. 1847 N-11 R4 AU50. Slightly sharper but there is a splash of dark reddish chocolate toning at STA into the leaves below plus a smaller one at the second A in AMERICA, and these splashes show microscopic crud or verdigris. Otherwise the surfaces are a very attractive glossy light chocolate and steel brown. Satiny mint frost covers the protected areas. MDS, tie state a. Tied for CC#5 in the Grellman census. Ex Ron Czwakiel, McCawley & Grellman Auctions/Superior 6/98:555 (as PCGS MS63BN)-McCawley & Grellman Auctions/Superior 5/99:1559; Goldberg's / M&G 09/20/10:1086.



432. 1847 N-12 R3 VF30. Nice medium brown color, possibly recolored, but perfectly done if so. VF35 net VF30 for a light scratch from star 1 to the neck, plus normal marks for the grade. LDS (c) with a small rim break at obverse K2.



433. 1847/7 N18 R5 VF20. Nice medium brown with good surfaces and nice color for the grade. The 1847/7 is clear. MDS

434. 1847 N-20 R3 VF35. EF40, but expertly recolored a medium dark brown, and there is a light scratch in the field that extends downward from the coronet tip to the chin. A small spot of green verdigris to the left of star 4. MDS.



435. 1847 N-21 R1 VF35. M-LDS (b). Another example with that same nice medium tan brown color. Some spots of darker toning near the date, but no marks to speak of.

436. 1847 N-24 R1 MS60. Technically uncirculated but very dark brown from a well-done recoloring. LDS, (d) early, Newcomb's #9.



437. 1847 N-26 R3 VG8. F15+ details but corroded and very thickly recolored, giving the coin a wet, greasy appearance. Very rare LDS (f), with two reverse rim breaks: a small one at E-S, and a much larger one at OF-A.

438. 1847 N-32 R4 VF30. Nice medium tan brown color with a spot or two of red patina on each side. Correct amount of tiny nicks for the grade. E-MDS (b). A very solid example.



439. 1847 N-36 R5+ F12. Okay, is every late date large cent this same medium tan brown color?! A nice example, 3 points sharper, with some tiny nicks and rim ticks. Nice F12.

440. 1847 N-36 R5+ VG10. Original dirty brown with some minor roughness and some darker toning at the bottom of the obverse. A light scratch encircles star 13. MDS.



441. 1848 N-3 R2 EF40. Authenticated and graded by ANACS as AU55 details, cleaned, in a yellow-label holder. EAC EF45 net EF40 for the cleaning, which has left the coin with an even golden brown color that is pleasant but not quite natural. No marks. LDS (c).

442. 1848 N-3 R2 VF35. 10 points sharper but cleaned and recolored. The color is now a too glossy dark brown with maroon highlights. There is a spot of red corrosion at 84, and a spot of green-black corrosion in the hair below the ear. Probably looks better than it sounds.



443. 1848 N-4 R4+ VF35. Better than EF40 details, but recolored a very dark brown with orange around the devices, and the coin has a bit of a splotchy appearance. A sharp nick on the neck just below the chin. LDS (c).

444. 1848 N-6 R2 EF40. Authenticated and graded by ANACS as AU50 in a blue-label holder. EAC grade EF40 with no remaining luster, but really no contact marks, either. EDS (a) and a very solid example.

445. 1848 N-6 R2 VF35. Another attractive coin with pretty medium tan brown color. EF40 net VF35 for a small spot of red verdigris on the reverse beneath ICA. E-MDS (c).

446. 1848 N-9 R1 VF35. AU50 details but cleaned and recolored. Close to a natural look, but with a little too much gold in the fields. LDS (f) with a continuous reverse rim cud from D-STATES that is interrupted by a manmade scrape at TA. Ex- Abe Kosoff estate; Bowers and Merena 11/04/85:222; Walter Dudgeon; M&G 07/30/94:303.



447. 1848 N-10 R3 EF40. Great medium tan brown color again, and with nice surfaces. Not struck up on the reverse, especially at ONE CENT and the wreath, and there are some depressions in the planchet beneath CENT. MDS (b).



448. 1848 N-11 R5- VF30. Removed from an old PCGS holder as AU55. EAC EF40 net VF30 for recoloring which has given the coin a medium brown color with brick red highlights. Terminal die state (e) with three small reverse rim breaks, one above D and two above TES. A tiny nick or two can be found on each side.

449. 1848 N-13 R4 VF35. Authenticated and graded by NGC as AU50BN. EAC grade close to EF40 with a couple of light scuffs well-hidden on the reverse wreath beneath D-STA. LDS (b) with a notable rim break above TES, and this coin is CC10 for the die state.

450. 1848 N-15 R4+, N24-R4+, N-32 R5. Three tough 1848 varieties, each with problems. N-15 is VG8 net G6 for dark color and rim nicks. N-24 is VF30 net VG8 for corrosion and a dent on the neck. N-32 is VG10 net G5 for moderate granularity. Lot of 3 MDS coins.

451. 1848 N-22 R1 EF40+. Very pretty medium tan brown color, with great eye appeal. Some tiny nicks on and in front of the chin can be seen with a glass, but that's being picky. E-MDS (b).

452. 1848 N-24 R4+ VF25+. VF30 but attractively cleaned and recolored with some vertical woodgrain. The surfaces are still a bit "wet," with the gloss suggesting a higher grade. LDS (c) with a vertical line clearly connecting the left stand and the crossbar of the N in CENT. Minor nicks on each side.

The 2012 EAC Convention Sale, May 5, 2012

453. 1848 N-25 R4 VF35. EF45 but cleaned and recolored, and with a very unnatural and very bright orange color. LDS (c). A tiny nick in the field right of star 3.

454. 1848 N-25 R4 VF25. Excellent medium tan brown color (again), and sharp VF25 details. There are a couple of tiny nicks on each side, including one on the obverse rim between stars 1-2, plus an area of red discoloration on the reverse around ICA. LDS (c) with significant reverse crumbling.

1848 N-28 CC#4



455. 1848 N-28 R1 MS63. A nice mint state example with 25% red on the obverse and 35% on the reverse. There is a spot of darker toning around star 1, but marks are very difficult to locate, even with a strong glass. LDS (c), and tied in the Grellman census for CC4. Ex-1993 ANA.

456. 1848 N-30 R5 VG8. F12 sharpness. Cleaned long ago and now mostly retoned, but with microscopic black pits covering both sides. Additionally there are at least two-dozen rim cuts spread across the reverse rims. E-MDS, state (a) late.

457. 1848 N-32 R5 VG10. Original dirty brown surfaces. Nice color and acceptable marks for the grade. MDS and a nice low grade R5.

458. 1848 N-33 R5- F12. Recolored a splotchy dark brown with dark orange undertones. VF20 details but a few too many light contact marks for the sharpness grade. MDS.



459. 1848 N-36 R5- F15. Peanut butter brown fields with darker highpoints, an atypical but attractive contrast created by retoning the highpoints with sulfur. A shallow scrape at star 2 on the obverse and a light dent to the left of ONE on the reverse are the only marks worth noting. LDS (b).



460. 1848 N-41 R1 EF40+. Sharpness 5 points higher, but with some light nicks on the rims and a light rim bump at reverse K7. Glossy medium brown; MDS (b).



461. 1848 N-42 R5 VF25. 5 points sharper but the reverse has been recolored, and there are a couple spots of lighter red beneath the patina. The obverse is slightly misaligned to K7.5, creating what looks like a thin rim cud at the top of the reverse (it's not!). Tied for CC5 for this variety.

462. 1848 N-42 R5 G5. Sharpness VG8 with original medium brown color. There are some light diagonal scratches on the obverse, several minor rim bumps on each side, and the coin is also slightly bent.



463. 1848 N-44 R5+ F12. F15 with a few scattered nicks on each side, including some dull contact marks on each N inside the wreath on the reverse. Medium brown with slightly lighter highpoints, and perhaps cleaned long ago, in a galaxy far, far away.

464. 1848 N-44 R6 G5. Five points sharper but covered with very fine porosity. No verdigris, the only notable mark being a dull rim nick over the O in OF. Dark steel brown. Extremely rare terminal die state, die state c, with a very strong die crack from the dentils through ME. This is the discovery coin for the die state, and another example with a crack this bold has yet to surface. Ex Tom Reynolds 8/7/90; Daniel W. Holmes, Jr. 10/03; Goldberg's / M&G 01/30/11:328.



467. 1849 N-1 R4- VF30. VF35 but recolored a medium dark glossy brown. There are a couple of tiny nicks on the obverse rim at K5 and K7.5, plus a couple more on the reverse at K4 and K10. M-LDS (d). Ex-Superior 02/91 lot 961.

468. 1849 N-3 R3 VF30. Pretty medium tan brown color, with just a few tiny nicks on the surfaces and the rims. 5 points sharper, with some traces of green corrosion within the wreath at K3 and K9. E-MDS (e).

469. 1849 N-4 R1 VF30. Rich dark peanut butter brown with glossy surfaces, probably recolored. There is a swatch of darker carbon at the bottom of the reverse. 5 points sharper but with several light nicks on and before the portrait. Struck on a "fatboy" planchet measuring 28.11 mm in diameter and 165.9 grains. Great eye appeal. M-LDS (c).



470. 1849 N-11 R1 MS60. Authenticated and graded by PCGS as MS64BN. EAC MS60 with a trace of red. Most of the coin is a satiny medium brown with subdued carthwheel luster over each side, with just one tiny spot of brighter copper right on the chin. Terminal die state (g) with a series of small rim breaks on the reverse from K6 – K8, and this example is CC2 for the die state.



471. 1849 N-11 R1 AU58. Just a trace of wear on the highpoints, plus some very tiny rim disturbances on each side. There is some red seale at stars 2, 8-10, and 13, and the overall color is an attractive medium brown. EDS (a).

472. 1849 N-11 R1 VF30+. VF35 with a few tiny spots of green corrosion on the obverse. Nice medium brown color with glossy surfaces. LDS (c) with a notable reverse rim break over U to the left ribbon end.

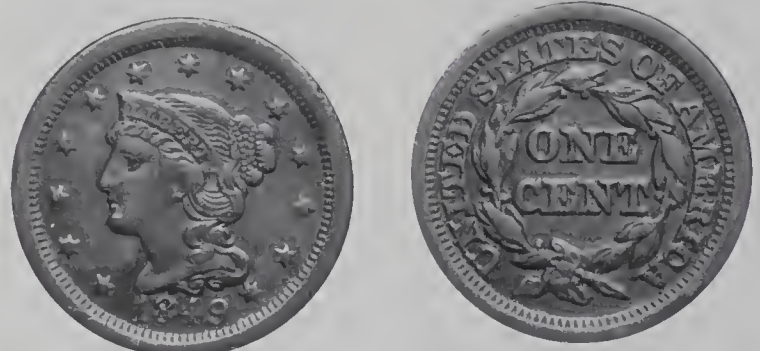


473. 1849 N-16 R5 VF30. In an NGC holder as AU details, environmental damage. EAC AU50 net VF30 for some light areas of green corrosion on the reverse, strongest at TES-OF. Dusky dark brown color overall, and the obverse is pretty nice. LDS (c).

474. Lot of Three 1849 Large Cents. N-16 R5 is a dark average G6, MDS (b). N-21 R4 is VF25 net F15 for cleaning and recoloring, plus a patch of black corrosion at star 3. N-28 R3 is VF30 net VF20 for way too many nicks, scratches, and rim bumps. Lot of 3 coins.



475. 1849 N-20 R1 AU50. PCGS graded MS63 Brown. Glossy chocolate brown shifting from light to dark shades on the obverse. Mint frost shows in protected areas on both sides. A splash of dark chocolate toning at star 13 is the best identifying mark. E-MDS, die state a late. The die lines at UNITED and MERIC are easily visible. Called AU50 in the Noyes census, his photo #55020. Ex Stack's 3/16/68:85; Daniel W. Holmes, Jr.; Goldberg's / M&G 09/07/09:946.



476. 1849 N-30 R5 F12. Sharpness VF 20 very lightly porous surfaces. Dark steel and tan color. E-MDS. Ex Tom Madigan, Fred Iskra.

The 2012 EAC Convention Sale, May 5, 2012



477. 1850 N-9 R2 AU55. Gorgeous medium tan brown with reflective surfaces. Minor evidence of contact. LDS (c) and pedigreed to the Jack H. Robinson collection; Superior 01/30/89 lot 1530.



478. 1850 N-12 R1 AU55. Pretty medium dark brown with lustrous surfaces. The obverse shows a few tiny, shallow areas of black verdigris, plus a well-hidden nick above the ear. The reverse has some equally tiny and meaningless pinpricks between S-O. None of these amount to much. M-LDS (b).

479. 1850 N-15 R1 EF40. Ex-Heritage / Jules Reiver 01/30/06 lot #28556 as NCS UNC details, environmental damage. EAC AU50 net EF40 for some light reverse corrosion around UNITED. Glossy medium brown with much darker toning streaks on each side. EDS (a).

480. 1850 N-20 R5 VF25. VF30 Medium tan color with smooth attractive surfaces. Some tiny nicks on the face and in the fields plus a couple small rim marks on the reverse detract some what, but the overall appeal is acceptable for the grade. E-MDS. Ex. EAC Sale 4/17/99:623

481. 1850 N-20 R5 VG8. F12 with lighter fields and darker highpoints from a day at the sulfur spa. There are some light nicks on each side, and the obverse rims have been lightly smoothed. F12 net VG8 and still looks nice for a low grade example. Ex-M&G 01/07/95:666. No, this is not the anti-Christ.

482. 1850 N-24 R4+ F15. E-MDS with several significant planchet voids inside the rims on both sides. EF40 details but with several light scratches and a recoloring job. But still looks okay at arm's length.

483. 1850 N-24 R4+ VG10. F15 with great medium tan brown color but with a plethora of tiny nicks and scratches on each side. The date is faintly struck but still visible. Looks quite nice for a low grade late date.

484. Lot of Four Large Cents. 1850 N-26 R4 VF25 old cleaning. 1851 N-24 R3 VF30 old cleaning. 1851 N-30 R2 original tan F15 with rotated reverse. 1853 N-22 R2+ EF45 net VF30 corroded and recolored very dark brown. Lot of 4 coins.



485. 1850 N-27 R4 VF30+. EF40+ and expertly recolored a gorgeous mixture of medium and dark chocolate brown. Not original, but it looks so great that you almost want to ADD points to the grade. Just a few tiny nicks.



486. 1851 N-1 R3 AU58. Gorgeous tan brown with soft satiny luster across both sides. Softly struck at the rims, but with mark-free fields. There is a very light dusting of black carbon to the right of CENT on the reverse, where there is also a hint of underlying mint red. Very pretty and original. MDS (b).

487. 1851 N-10 R1 EF45. Very lustrous AU50 with nice medium tan brown color. A few tiny nicks can be seen scattered about the coin, mostly on the obverse, and there is a tiny spot of red verdigris on the reverse at S-O. LDS.

488. 1851 N-12 R1 VF35. Removed from an ANACS AU55 holder. EAC EF40+ with glossy medium tan color and a few light nicks on each side. Additionally, there is a tiny spot of red between stars 3-4, and a very faint scratch between stars 4-5 to the nose. EDS.

489. 1851 N-19 R3 VF35. Sharpness EF40 with some very minor verdigris on each side. Mottled medium and dark brown color, leaning toward the dark side. MDS (c late), and make sure you take a look at the strong die lines on the reverse around E in ONE.

490. 1851 N-27 R4 VF30. Medium dark brown with some areas of darker carbon spotting, mostly on the obverse. 5-points sharper with several tiny nicks on each side. MDS (c).



491. 1851 N-30 R2 MS60+. In a PCGS holder as MS64+BN. Very close to Gem with just a couple of TINY nicks on each side, including a little rim tick at reverse K3. Medium golden brown with subdued mint luster and a trace of 10% red on the reverse. Grellman CC#6; E-MDS, state (a) late.



495. 1851 N-40 R5 VG8. Very nice for the grade, with a minor reverse rim nick above TA and a dull scuff above OF.



492. 1851 N-35 R5+ F15. VF20+ with some minor nicks on each side. The coin is a dark brown from an even recoloring, although I do note a bit of splotchy orange undertones at the lower reverse. EDS (a).



496. 1852 N-8 R2 AU58. Mint state sharpness with a thick recoloring that has left some light stains at K1-K2 obverse. No real marks to speak of, but I do note a shallow depression on the reverse beneath CENT. LDS (d).

493. 1851 N-35 R5+ G5. Nice smooth medium brown G5+ with a tiny rim bump at K12 reverse. Ex-Bob Grellman 02/87, just 25 short years ago!



497. 1852 N-11 R1 EF40. Nearly choice with glossy medium tan brown color. A sharp strike with all stars still showing their centers even after 30 points of wear. MDS.

Equal CC#5 1851 N-36



494. 1851 N-36 R5+ VF25. VF35+ with some light nicks on the obverse and several more significant light scratches on the reverse. E-MDS, and tied for CC#5 for this variety.



498. 1852 N-11 R1 F15. Ten points sharper but the obverse is covered with several tiny nicks, and the reverse is covered with even smaller pits and roughness. LDS (e) with a reverse rim break cud above TES-O. Glossy medium brown with a hint of darker maroon color.

Second Finest Known 1852 N-18



499. 1852 N-18 R3 MS63+. A very lustrous mint state example, MS64 with 30% red on the obverse and 45% on the reverse. 1 point deduction for a hairline scratch in the patina from star 4 to the nose, plus a fingerprint between stars 9-10. EDS (a), CC#2 for the variety, and quite a beautiful mint state cent.



500. 1852 N-20 R4 VF20. VF25 with nice medium tan brown color. There is a small dent on the 1 that has some black in it, and it somewhat resembles a planchet flaw. LDS (c) with two obverse rim breaks at K1 and K3.



501. 1852 N-21 R4 VF35. Early die state with nice glossy medium tan brown color. There are a few tiny voids and nicks atop the obverse rims, but so minor as to not deduct. The best identifying mark is a tiny nick just above the right stem on the reverse.

502. 1852 N-23 R5 F15. VF20 with original medium brown, attractive color. Deduct 5 points for a light vertical scratch that nearly bisects the reverse. LDS (b) with a small reverse rim break from K5-K6. Ex- M&G 09/13/97 lot 334.

503. 1852 N-23 R5 VG10. Medium brown with some gloss and a few spots of darker toning. Expected marks for the grade, including some light scratches at star 2 and also above the bottom of the wreath on the reverse. MDS (a).



504. 1853 N-1 R2 MS60. Authenticated and graded by NGC as MS63BN. EAC MS60 with a few small nicks on the obverse at star 2, star 3, and the bridge of the nose, plus some even tinier nicks on the reverse beneath the E in CENT. EDS (a), and with a trace of 5% mint red on the reverse. Tied for CC#9.



505. 1853 N-10 R1 MS63. Housed in an old PCGS MS64BN holder. E-MDS and flatly struck on the stars, none of which have any interior definition. Mostly dark brown with 5% mint red, plus some attractive red and sea green iridescence on the reverse.



509. 1853 N-21 R4 MS62. Housed in a very old, small PCGS holder as MS64RB. EAC grade MS63 for a tiny nick over the coronet tip between stars 5-6. Approximately 10% mint red, and well-centered but with a mushy strike at the peripheries. LDS (b) and the irregular lump above the N in CENT on the reverse is plain to the naked eye.



506. 1853 N-13 R1 AU58. Pretty glossy medium brown with a trace of underlying mint luster on each side. Almost no marks, but a glass does reveal a tiny nick on the chin. MDS (b).

510. 1853 N-24 R2 EF40. Sharpness a tad higher, but there is a tiny rim nick on the reverse at K7. Very attractive with glossy medium tan brown color and bold details. EDS (a).

511. 1854 N-17 R1 VF35. In a green label PCGS holder as AU55. Absolutely no luster, and too much wear for that grade. EAC VF35 and many would call it a full EF40 with average dusky brown color and some debris in the devices on the reverse. No significant marks. M-LDS (c).



507. 1853 N-14 R3 EF45+. Housed in a PCGS AU55 holder. Almost no trace of wear, but almost no trace of luster, either, hence the EAC grade of EF45+. EDS (a) with no real defects to speak of. Perfectly centered with nice medium brown color.



512. 1854 N-19 R3 MS60. Authenticated and graded by NGC as MS64BN. Mostly subdued medium dark brown, with a trace of mint luster on the reverse. E-MDS, state (b) early, with an arcing die crack that bisects the obverse from star 4 to star 9. Tied for CC#5.

508. Lot of Three Large Cents. 1853 N-16 R1. Nice VF30, EDS (a). 1856 N-11 Upright 5 EF40 net VF35 light nicks and recolored with a couple of darker carbon spots. 1856 N-19 R2 Slanted 5 Nice VF30. Lot of 3 coins, all of which are quite pleasing.



513. 1854 N-22 R4 EF40. Very EDS (a), with sharp details and a very glossy rich medium brown color. The kind of coin that you see in an NGC AU55 holder. A little bit of white and green corrosion in the ear, plus an equally insignificant area of shallow black verdigris above ON on the reverse.

The 2012 EAC Convention Sale, May 5, 2012

514. 1854 N-29 R3 VF30. VF35 with some light nicks on each side. Glossy medium brown color. EDS (a), and the date is very faint but still fully readable, as-struck.



515. 1855 N-8 R3 AU50. In a green label PCGS holder as AU58. Flat dark brown with no real wear, but no luster, either. EDS.



516. 1855 N-9 R1 EF45. Knob on Ear. E-MDS (d) with a small but clear knob. Very pretty medium peanut butter brown with some darker toning on the highpoints. Definitely has the look of a 10-point higher grade.

Late Die State 1856 N-1



517. 1856 N-1 R1 AU58. Mint state sharpness, but with two TINY rim nicks, one at obverse K10 and the other at reverse K6. Soft satiny brown with flowline luster. LDS (g) with no less than FIVE reverse rim breaks, and this is CC#4 in this die state. Very attractive and very cool – make sure you take a look at this one. Ex-Bowers & Merena 01/90:1237; M. Paul; Superior 02/03/91:991; Wes A. Rasmussen; Superior / M&G 02/08.98:494; CVM FPL #85 Winter 2010.

518. 1856 N-3 R1 VF30. EF40 with some light rim shaving on the reverse at K3-K5. LDS (g) with an obverse rim break at K4-K5. Pretty medium tan brown with a spot of red verdigris at the top of the hair. Ex-Bob LaForme 04/23/05.



519. 1856 N-11 R1 MS62. A pretty mint state example with at least 20% mint red on the obverse, and even more on the reverse, perhaps 35%. Nice eye appeal, with just one nick above and to the right of star 12. M-LDS (b), and the stars are very flatly struck.



520. 1856 N-13 R2 EF45. AU50 sharpness on a perhaps too glossy dark chocolate brown planchet. A glass reveals a half-dozen nicks on the obverse that limit the sharpness grade. MDS (c).

521. 1856 N-13 R2 VG10+. F15+ with some scattered light corrosion in the form of red and green pitting on each side. There are also several light contact marks, mostly on the portrait. Rare LDS (d) with an obverse rim break above stars 9-10.

Third Finest Known 1856 N-18



522. 1856 N-18 R1 MS63+. In an NGC MS66BN holder. MDS (c) with the obverse fields very rough. Obviously, hard to find any defects at this lofty grade, but you can try. Lustrous medium brown with a trace of mint red on the reverse. Grellman CC#3.

523. 1856 N-21 R2- VF35. EF40 with medium tan brown color and a bit of crud in the devices. I like the crusty look it gives the coin, but some may not. There are also a half-dozen very tiny rim nicks on the obverse. LDS (b).



524. 1857 N-1 R1 AU50. Graded MS63BN in an older green-label PCGS holder. Obvious wear, especially on the leaf ribbing, and the color is an expected dark brown with just a hint of gloss. M-LDS (b).

525. 1857 N-1 R1 F15. VF30 with some rim cuts all along the obverse rim, plus cleaned and recolored with some of the unnatural orange brightness peaking through. E-MDS, (a) late.

526. 1857 N-1 R1 F15. ANACS white holder as EF45 details, damaged. EAC grade VF25 net F15 for the E in CENT being crudely altered into a U on the reverse. Otherwise medium dark brown color and just what you would expect for a VF example. E-MDS, (a) late.

527. 1857 N-4 R1 VF35. Pretty medium tan brown with glossy surfaces. There are some light scratches on the reverse between ONE CENT, plus a solid contact mark on the I in UNITED. Nice eye appeal.

528. 1857 N-4 R1 F15. A very nice, original example that is clearly above average for the grade. Easy to find in EF and higher, but very tough to locate in this nice, circulated grade. M-LDS, (c) early. Nice medium brown color.



529. Large Cent Blank Planchet. 164.1 grains with narrow upset rims (stage II) as used on mature head large cents. Fine condition with some light erosion overall, plus a dull scrape on one side.

530. Donated Lot – 1782 Libertas Americana medal in Silver. Struck by Monnaie De Paris in .950 fine silver; 60g, 50mm. Comes in a blue collector's box with an insert from the mint. Donated lot from Ray Rouse – all proceeds to EAC, with special thanks to Ray.

531. Donated Lot – 1782 Libertas Americana medal in Bronze. Struck by Monnaie De Paris in Pure Bronze; 57g, 47mm. Comes in a blue collector's box with an insert from the mint. Donated lot from Ray Rouse – all proceeds to EAC, with special thanks to Ray.

532. Donated Lot – 3 EAC Anniversary Medals in BU. Three UNC medals commemorating the 15th (1982), 25th (1992), and 30th (1997) anniversary of the Early American Coppers club, originally founded in 1967. Donated lot from Steve Carr – all proceeds to EAC, with special thanks to Steve.

533. Donated Lot – 6 Different CVM Medals in BU. Six different dollar size CVM medals, all in UNC. Donated lot from Steve Carr – all proceeds to EAC, with special thanks to Steve.

534. Donated Lot – 5 Different Store Card Medals in BU. Five different examples, 2 in a silver metal and 3 brass / goldline. Donated lot from Steve Carr – all proceeds to EAC, with special thanks to Steve.

535. Donated Lot – 8 Store Card Medals in BU. Four identical CVM store medals, and four different designs, 8 total. Donated lot from Steve Carr – all proceeds to EAC, with special thanks to Steve.

536. Donated Lot – 21 Different Store Card Medals in BU. Donated lot from Steve Carr – all proceeds to EAC, with special thanks to Steve.



Wooden Replica 1793 Chain AMERICA Large Cent with Stand for Display. Reverse only (the obverse is blank). Skillfully hand carved in dark wood. Approx 12 inches in diameter and nearly an inch thick. Comes with a display stand. Essentially new. Acquired by Dan Holmes from Jack Robinson circa 1989 and proudly displayed in Dan's home office for over 20 years.

Wooden Replica 1794 Large Cent with Stand for Display. As above but obverse only (reverse is blank).

Wooden Replica 1800/179 Large Cent with Stand for Display. As above, obverse only.

Wooden Replica 1809 Large Cent with Stand for Display. As above, obverse only.

Wooden Replica 1820 Large Cent with Stand for Display. As above, obverse only.

Wooden Replica 1839/6 Large Cent with Stand for Display. As above, obverse only.

Wooden Replica 1857 Large Cent with Stand for Display. As above, obverse only.

Lot of the 7 Wooden Replicas offered above. Opening bid must be at least 10% higher than the total of the winning bids for the 7 individual lots. (This will keep the family together.) Shipping additional. Lot of 7 "coins."

Special Hardbound Copy of the 2012 EAC Sale Catalog. One of 5 in leather, signed and numbered. Donated lot – all proceeds to EAC.

The 2012 EAC Convention Sale, May 5, 2012

TERMS OF SALE

1. This is a private sale. Participation is by invitation only and is limited to members of The Early American Coppers Club or invited guests. The auctioneer reserves the right to refuse to honor any bid which, at his sole discretion, he feels is not submitted in good faith. The auctioneer may withdraw any lot, without prior notice, for any reason whatsoever.
2. The highest bidder acknowledged by the auctioneer shall be the buyer. In case of dispute the auctioneer may at his sole discretion reopen a lot. In all cases the auctioneer's decision shall be final and binding on bidders.
3. All sales are payable in U.S. funds immediately upon receipt of invoice unless other arrangements have been made prior to the sale. Lots delivered in state of sale are subject to all applicable state and local taxes unless appropriate permits are on file with us.
4. Postage will be added to the invoice of all successful mail bidders.
5. A 10% buyers fee will be added to all invoices.
6. Please keep in mind this is not an approval sale. All sales are considered final. Sales to the floor may not be returned for any reason save authenticity. Sales to mail bidders are final unless lot proves to have been mis-described.
7. Lots will be available for viewing at the 2012 EAC Convention in Buffalo, NY, or by appointment.
8. Mail bids or phone bids will be accepted up through the day of the sale. All bids will be reduced. Lots will open at one increment above second highest mail bidder. Bidding will proceed as competition dictates with the lot either selling to the floor or to the mail bidder at one increment above the second highest bid.
9. Consignor may bid or place a reserve bid on their own coins. Any coins repurchased by a consignor will be announced as a pass. Principals of the auction firm may consign or may bid on coins in the sale.

MAIL BIDS

Please mail all bids to:
M & G Auction
P.O. Box 5250
Frisco, TX 75035

or Fax to Chris McCawley 214-618-4592

Mail Bid Form

I hereby authorize M & G AUCTIONS to execute the following bid(s) at the auction to be held May 5th 2012.

Please buy the following lot(s) for me at the price(s) not exceeding those shown. The bid(s) is made subject to the "Terms of Sale", and I agree to remit promptly on receipt of invoice or notification that the bid(s) is successful. This signed bid sheet constitutes an agreement between me and M & G AUCTIONS.

NAME _____

ADDRESS _____

CITY _____ STATE _____ ZIP CODE _____

SIGNATURE _____ PHONE () _____

EAC# _____

IF NECESSARY, PLEASE INCREASE MY BID(S) BY:

10% 20% 30% Other _____ %

SPECIAL INSTRUCTIONS:

Please Mail Bids To: M & G Auction • P.O. Box 5250 • Frisco, TX 75035 • Phone 972-668-1575 FAX 214-618-4592
Email bids up to the day of the sale to Bob at ljefferys@cfl.rr.com



1803 S-245



1803 S-255



1803 S-246



1803 S-259



1803 S-249



1803 S-260



1803 S-251



1803 S-261



1803 S-252



1803 S-263



1803 S-254

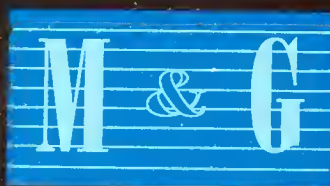


1803 S-264





Copyright 2012 ©



P.O. Box 5250
Frisco, TX 75035
972-668-1575