

**Chris McCawley Bob Grellman
Shawn Yancey**

present

**The 2013
EAC
Convention
Sale**

May 4, 2013





1793 C-2



1793 S-5



1804 C-6



1793 S-8



1828 C-3



1793 S-10



1856 C-1



1793 S-11a



1793 S-1



1793 S-13



1793 S-3



1794 S-44



Chris McCawley - Bob Grellman - Shawn Yancey

present

the

2013 EAC Sale

May 4, 2013, 7:30 p. m.

at the Cherry Valley Lodge

2299 Cherry Valley Road, Newark, OH 43055

740-788-1200

Welcome to the 2013 EAC Sale.

The sale will be held Saturday night May 4 at 7:30 p.m., at the Cherry Valley Lodge, Newark, OH.

Lot viewing will be held at the Early American Coppers Club Convention. We welcome your participation whether in person, by mail, by fax bid, or by e-mail. Please feel free to call Chris McCawley (972-668-1575) to discuss any lot in the sale.

Mail bids should be directed to Chris's address: P.O. Box 5250, Frisco TX, 75035. Fax bids to Chris McCawley 214-618-4592. E-mail bids can be made up to the day of the sale. E-mail: jrgrellman@gmail.com.

This is a private sale, you must be a member of EAC to bid - please read our terms of sale before bidding.

The 2013 EAC Convention Sale, May 4, 2013



1. **1760 Voce Populi 1/2P Nelson-13 R4 F15+.** P Below. Authenticated and graded by PCGS as VF20. EAC F15+ and choice for the assigned grade with perfect medium tan brown color and only a few tiny nicks.



2. **1783 Nova Constellatio C-2B R1 VF20.** Pretty medium tan brown color with nice eye appeal. There are some shallow planchet voids on the reverse which appear as-struck, but they are insignificant. Nice eye appeal and strong details. 112.3 grains.

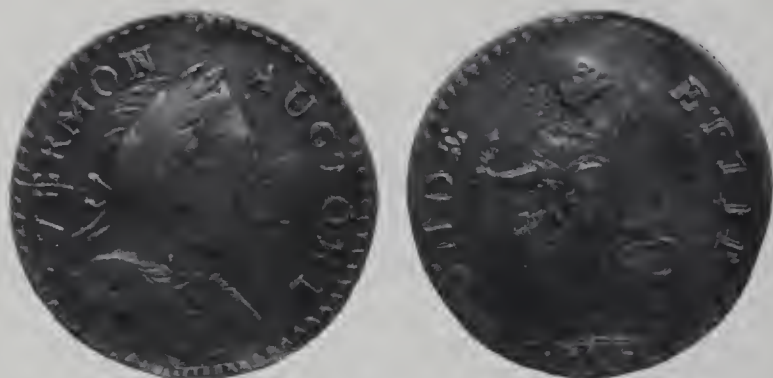


3. **1785 Nova Constellatio C-3B R1 F15.** Absolutely choice for the assigned grade with medium dark chocolate surfaces that are smooth and nearly mark-free. The only mark, and it is small and well-hidden, is a tiny pinprick next to the star that is beneath the second T in CONSTELLATIO. E-MDS.

4. **Group Lot, 2 Mixed Coppers.** 1787 Connecticut Copper M-13D "childish face," smooth FR2 with no date; and 1797 S-138 Draped Bust Large Cent G5 cleaned and granular with bold date, net AG3, LDS. Lot of 2 coins.



5. **1786 Vermont RR-6 VG10.** VERMONTENSIUM. Sharpness approaching VF20 but the coin is evenly granular, and that granularity obscures portions of the details on each side. The color is an attractive medium tan brown. The obverse is mostly mark-free, but there are a couple of dull seuffs on the reverse. The date is bold, and VERMONTENSIUM is easily readable although faint in areas. EDS; 130.7 grains.



6. **1787 Vermont RR-12 R3+ F15.** Bust Right. Double-struck over Nova Constellatio with undertype plainly visible on both sides, and clear doubling on ET LIB. The sharpness is easily VF25, but the coin has been recolored and there are some faint scratches on both sides. Retains decent eye appeal nevertheless. M-LDS; 111.8 grains.

7. **1794 Talbot, Allum, and Lee Cent with New York, B-1032, Fuld-4, EF45+.** Authenticated and graded by PCGS as AU58. Mottled medium tan and brown on the obverse with a hint of yellow on the reverse. No marks to speak of, and struck in full medal alignment. An attractive example of a very popular post-colonial cent.



8. **1793/2 Washington Ship 1/2p VF20.** Sharpness of EF40, and the Washington side is quite nice with glossy medium brown color and just a few tiny depressions around the chin. The reverse, however, is responsible for the net grade, due to a series of 8 dull dents on the ship's mast and sails, plus a very heavy rim dent at reverse K4-K5. I might speculate that the dents were purposeful as they strongly resemble large drops of falling rain. One of those "too bad" coins because it looks so pretty otherwise.



10. **1793 C-2 R3 F12.** Sharpness close to VF20, but with some light scratches on each side, plus a tiny rim nick at obverse K8. There is also a notable nick on the reverse above HALF near the top of the wreath. The color is an attractive mixture of peanut butter and chocolate, and the contrast gives this coin nice eye appeal. Reverse rotated 35° CW; MDS.



9. **1787 Fugio N-1B R4 F15.** Cross After Date. VF25 with some shallow black and red corrosion on each side that is well mixed into the medium brown surfaces. Additionally, there are some light planchet voids on each side, most notable on the reverse. LDS with doubled clash marks. Below average, but not bad-looking for this important variety.

11. **1793 C-2 Electrotpe COPY VF30.** A well-executed example with the typical pebbly surfaces of an electrotpe. The color is mostly brown with some of the gray base metal bleeding through, and the edge is plain without any attempt to add edge lettering. This one is good enough to fool a novice, but the lack of edge lettering and the presence of a seam is certainly enough for most people to determine that this is not a genuine example.



12. **1794 C-4a R3 G6.** Smooth with glossy medium brown surfaces that are perhaps a bit too glossy. The obverse is nearly mark-free save for a pair of tiny rim nicks at K2 and K4, and the reverse displays just one tiny rim nick at K4. LDS, M4.0, with heavily clashed and bulged obverse and strong die cracks on the reverse. A nice example for the grade.



13. **1795 C-1 R2 G5.** Lettered Edge. Gorgeous tan brown with excellent eye appeal. The obverse shows some very faint scratches and a tiny nick in front of the nose, but is clearly average plus. The reverse is equally pretty, aside from some similar faint scratches, but there are two small areas of active, raised red corrosion, the largest of which is located at the upper left side of the bow. Plus obverse, minus reverse, choice color. LDS, M2.0, G6 net G5.



14. **1795 C-3 R5+ FR2.** Sharpness VG8 with light, evenly rough surfaces plus some heavy dents that have made the planchet slightly out of round. Fortunately, the date remains fully visible and the coin is easily attributable. Below average, but still decent. MDS, M2.0.



15. **1795 C-4 R3 VG7.** F12 with medium dark chocolate brown color, but with some areas of black pitting on the obverse and green corrosion on the reverse. All details are plainly visible except for HALF CENT, which is mostly gone. No major contact marks to speak of. MDS, M2.0.



16. **1795 C-5a R3 F15.** VF35 with glossy medium brown surfaces that are faintly granular. There is a beveled clip that affects the obverse rim at K3-K4, plus a notable and somewhat deep vertical scratch on the reverse. Due to the combination of roughness and the typical weak date on this variety, the date on this coin is just barely visible.

17. **1795 C-6a R2 AG3.** Sharpness F15 but heavily corroded leaving very rough surfaces that obliterate most of the date, although most of the other details on each side are still visible. Adding insult to injury are some heavy scratches in front of the face. The color is a dark brown and maroon, and the coin has been struck off-center toward obverse K10.5.

18. **1797 C-2 R3 F12.** Sharpness VF25 but with a host of problems, including rims that have been filed all around the coin. Additionally, the coin is too glossy from an old cleaning, and it is slightly bent. Medium brown with very strong details; the kind of coin that tends to do well on eBay.



19. **1797 C-3a R3 VG10.** Sharpness F15 with very dark brown color that is nearly black and includes a good portion of dark green as well. Surfaces are faintly rough, and there is some red corrosion covering roughly half of the obverse. The reverse escapes from most but not all of the corrosion, but does show a notable nick between EN of CENT. MDS, M2.0.



23. **1802/0 C-2 R3 G6.** Reverse of 1802. Sharpness VG10 with underlying medium brown surfaces. Some orange and black corrosion on each side. The corrosion covers about half the obverse and more of the reverse, but all details remain visible including the date. EDS, M1.0 or M2.0.



20. **1797 C-3b R4 AG3.** Lettered Edge. Obverse fully G5 with much weaker reverse as typically seen on this variety. The color is very dark with a splash of red-orange, and the surfaces exhibit light roughness. The edge lettering is very bold all around, but about half of the letters are dropped from the planchet due to the thinner size.

21. **1800 C-1 R2 VF25.** 10 points sharper with glossy medium tan brown surfaces that show minor roughness under a glass. Mostly mark-free, although a scuff at the second zero in the date is present. M-LDS, M4.0.

22. **1800 C-1 R2 F15+.** Authenticated and graded by PCGS as VF25. Dark brown surfaces with that mottled, matte appearance that early coppers develop after being inside a plastic holder for too long. Minor nicks only. MDS, M3.0.



24. **1802/0 C-2 R3 G4.** Reverse of 1802. Struck over Off Center Large Cent. Glossy chocolate brown with slightly lighter toning on the high points thanks to a very light cleaning. The surfaces are smooth and the only mark is a dull but obvious pinch on the rim at the bust tip and opposing area at OF. The date is clear and the overdate is obvious. Many of the details suggest a slightly higher grade, but there are areas of weakness as well, particularly at UNITED and OF. Struck over an off center large cent with "D STA" arcing through the center of the reverse. The "D" is hidden in the top of the wreath ribbon while STA is obvious without any magnification. There is no trace of cent undertype on the obverse, but a shallow indent on the cheek of Ms Liberty was likely from the spoiled cent since it is directly opposite the undertype STA. E-MDS, M2.0; 72.3 grains. Ex Stephen Cunningham 6/20/89; Davy Collection; McCawley & Grellman Auctions / Goldberg's 09/19/10:121.

25. **1802/0 C-2 R3 FR2.** Reverse of 1802. Smooth medium brown with glossy surfaces that show a touch of red corrosion on each side. The obverse is easily AG3+ with a readable date and LIBERTY; the reverse is much weaker, just PR1, but shows a possible new rotation of 70° clockwise

The 2013 EAC Convention Sale, May 4, 2013

26. **1803 C-2 R4 G6.** Sharpness F15 with a host of problems, including a plethora of nicks on both sides, areas of light pitting throughout, and a slightly bent planchet. Original medium brown underneath all the problems on top. E-MDS, M2.0.

27. **1803 C-2 R4 G4.** G6 with dark, finely porous surfaces. Other than the roughness, the obverse is mostly mark-free, but the obverse has several light scratches that appear to have been smoothed down to minimize their effects. E-MDS, M3.0.



28. **1803 C-2 R4 G5.** Dark brown with lighter brown highlights from a recoloring job. The surfaces are faintly rough under a glass, and both sides have some well-hidden faint scratches beneath the patina. LDS, M7.0, with heavy reverse rim break eud at STAT.



29. **1804 C-1 R3 VF25.** Sharpness EF40 with glossy tan brown surfaces. Both sides are covered with light scratches, and the obverse also has some dull scuffs on the neck. LDS, M2.0, with heavy reverse die crack. Would be very attractive but for the scratches and scuffs – maybe a great candidate for an album coin?

30. **1804 C-4 R5 G5.** VG8+ with lightly yet evenly corroded surfaces and some faint scratches. Matte, medium brown color with a splash of orange on the neck. Below average, but not horrible. LDS, M3.0; ex-2001 EAC Auction 03/31/01 lot 52.

31. **1804 C-6 R2 F12 M1.0.** Spiked Chin. Authenticated and graded by PCGS as VF20. Original medium brown with sharp details for the grade and no defects to speak of.

32. **1804 C-6 R2 G6 M2.0.** Spiked Chin. Sharpness VG7+ with original medium brown, slightly matte surfaces that show a hint of roughness plus a plethora of tiny contact marks. Additionally, both sides exhibit a dusting of red corrosion hidden in the crevices.

33. **1804 C-6 R2 VG7 M2.2-M2.5.** Spiked Chin. VG7 with dark surfaces that show a splash of red-orange on both sides. There are some faint, well-hidden scratches beneath the patina, and overall the coin is slightly below average in terms of eye appeal. Ex-2001 EAC Auction 03/31/01 lot 57.



34. **1804 C-6 R2 VG8 M3.0.** Spiked Chin. Authenticated and graded by PCGS as F12; EAC grade VG8 with medium brown surfaces that retain a bit of gloss. Both sides display a few nicks and scuffs, but nothing out of line for this grade. Ex-Lanny Reinhardt; 2001 EAC Auction 03/31/01 lot 61.



35. **1804 C-6 R2 VF30 M7.0.** Spiked Chin. An original example with sharp VF30 details and medium brown color. There is a pair of scuffs on the cheek plus a tiny spot of brighter orange right of CENT on the reverse, but otherwise this one is nice for the grade.



36. **1804 C-6 R2 EF45+ M9.0.** Spiked Chin. Authenticated and graded by NGC as AU58BN. EAC grade AU50+ net EF45+ for a couple of tiny carbon spots. The pretty chestnut brown surfaces retain plenty of glossy luster, and the overall eye appeal is very nice. M-LDS, M9.0.



39. **1804 C-7 R4 F12.** Spiked Chin. Sharpness VF35 with finely porous, sandpaper surfaces and a dark brown color that is somewhat glossy and also unnatural. Additionally, the edge has been filed at F-AM, and there is evidence of tooling at the obverse rim at K3. Otherwise no major marks to speak of – this one has enough problems already.



37. **1804 C-6 R2 VF30 M9.0.** Spiked Chin. Removed from an ANACS EF40 holder, and the label remains with the coin. EAC VF35 net VF30 due to cleaning and recoloring, which has left the coin with a mottled mixture of medium and dark brown that is not quite natural. Additionally, both sides show some very shallow scratches that are only visible with a strong glass. M-LDS, M9.0.



40. **1804 C-8 R1 VF25.** Spiked Chin. Authenticated and graded by ANACS as EF40 in an older, small white holder. EAC grade VF30 net VF25 due to some tiny scrapes to the left of the date, plus some evidence of rim bumps inside the ANACS holder. The color is an original medium brown, with positive eye appeal.



38. **1804 C-6 R2 VF25 M11.0.** Authenticated and graded by PCGS as VF35. EAC grade VF25 with original medium brown color. The obverse shows some vague spots of darker toning, but the surfaces are mostly mark-free. A glass reveals only light contact marks on the portrait, plus a tiny nick between D-S on the reverse. LDS, M11.0.

41. **Group Lot, 2 Half Cents in PCGS holders.** 1804 C-8 R1 Spiked Chin, PCGS G6 / EAC G6, medium brown with strong details; and 1809 C-6 R1 PCGS F15 / EAC F12 very dark brown color.



42. **1804 C-13 R1 EF45+.** Sharpness AU58 but the portrait is covered with myriad faint horizontal scratches, perhaps album slide marks. Lustrous medium brown with overflowing mint luster throughout. MDS, M2.0.



43. **1804 C-13 R1 VF25.** Sharpness VF30+ with glossy medium brown surfaces that reveal some VERY faint scratches visible only with a strong glass. Struck on a planchet without the rims upset prior to striking (stage 1), so the rims appear large and “flat” on each side. E-MDS, M1.0 late.

44. **1805 C-1 R2- FR2.** Double-Struck, Reverse Brockage Maker. Well-worn, medium brown surfaces exhibit a trace of light pitting and some well-hidden nicks and scratches. Obverse double-struck with 30° rotation, as evidenced by two portraits, and apparently a reverse brockage maker on the second strike. Although well-worn, the date is full and the Stemless wreath is also plainly visible.

45. **1806 C-2 R4 G6.** Small 6 with Stems. Medium brown with matte surfaces that show significant roughness. VG8+ sharpness with all details visible despite the granularity. No contact marks to speak of, just rough.



46. **1807 C-1 R1 AU50.** Removed from a PCGS AU58 holder, and the label remains with the coin. Gorgeous medium tan brown with soft, satiny surfaces that display abundant mint luster. LDS, M3.0, with the typical mushy strike. Very pretty for the grade.



47. **1807 C-1 R1 EF40.** A MDS example with medium brown color and somewhat sharper rims and overall strike than the AU50 above. There are a few tiny marks on each side, the strongest of these being a nick near the obverse rim at K10 and another nick on the reverse above the A in HALF.



48. **1808/7 C-2 R3 VG10.** Sharpness VF20 but there is a patch of light corrosion in the field left of the hair ribbon and the reverse is covered with fine roughness, including specks of greenish verdigris at TATE. A small dig at the left foot of the A in HALF is the only significant contact mark. The obverse is slightly glossy dark steel brown and the reverse is a slightly lighter shade of reddish chocolate. The date and legends are complete and strong, and the overdate is bold. MDS, M3.0, with a strong rim break cud at TY. Ex-EAC 2007 Auction 04/28/07 lot 66.

49. **1808/7 C-2 R3 G6. Tab Double Strike.** A few points sharper but covered with fine granularity. No verdigris or marks. Dark steel brown and chocolate. The date and legends are complete and clear. A tab double strike shows over BER in LIBERTY, but the tab does not show any of the die details. This tab may have occurred first, before the normal strike. Ex-EAC 2007 Auction 04/28/07 lot 67.

50. **1808 C-3 R1 VF25.** Authenticated and graded by PCGS as VF35. Light brown color with average surfaces. The obverse has some tiny nicks on the neck, and the reverse shows a nick above NT in CENT. Solid for the grade. MDS, M3.0.

The 2013 EAC Convention Sale, May 4, 2013

51. **1808 C-3 R1 VF20.** Sharpness close to EF40, but the coin is dark brown, nearly black, from light even porosity. Additionally, there are some scratches below CENT on the reverse that are visible to the naked eye, as well as some scattered light corrosion within the devices. MDS, M3.0.



53. **Group Lot, 2 Half Cents, ANACS Details holders.** 1809 C-2 R3 ANACS VF details net F15; corroded and cleaned, EAC VF20 net F15; and 1809 C-4 R2 Circle Inside Zero, EF details net VF30 cleaned, EAC VF30 net F15. Lot of 2 coins.



52. **1809 C-1 R4 F12.** Dark chocolate brown with slightly lighter high points. A few points sharper with microgranular surfaces. Additionally, there are some very faint scratches on the lower portrait. Still, a fairly high grade example with respect to the CC for this variety. MDS M2.0; reverse rotated 20° CCW.



54. **1809 C-3 R1 G4. Double Struck.** VG7 with medium brown surfaces that are faintly granular. Double-struck, with the first strike 25% off-center toward obverse K7.5. The second strike was centered. Evidence of the double strike is visible on the obverse in the form of a second portrait and stars along the left rim from K6-K11, and on the reverse in the form of a second HALF, portions of UNITED, and second wreath along the rim from K7-K12. A very obvious mint error.



55. **1809 C-6 R1 AU55.** Authenticated and graded by PCI as MS60 Brown in a gold-label holder. EAC grade AU55 with soft lustrous surfaces and nice eye appeal. No defects to speak of, just nice copper. M-LDS, M6.0, with some small, thin obverse rim breaks, one of which is very clearly visible in the PCI holder above the top back of the hair.



58. **1810 C-1 R1 EF40.** At first glance a sharp, lustrous, pretty AU50. Closer inspection reveals some light and scattered raised red corrosion on each side that is well-blended yet still visible. Additionally, there is a tiny as-struck clip at obverse K1 that affects the denticles on each side of the coin. Very nice looking despite the problems. MDS.



56. **1809 C-6 R1 VF35.** Lustrous AU50 with medium glossy brown surfaces. The obverse is quite nice, but the reverse is marred by some sharp scratches running from HALF CENT diagonally upward through OF. Additionally, the reverse has some notable rim nicks at K8 and K11. Too bad, because otherwise this one is a beauty. MDS, M4.0.

59. **1811 C-2 R3 PR1.** Heavily corroded, eroded, and scudzy. Readable date. Ugly. Enough said.



60. **1825 C-1 R3 VF30.** Nice glossy olive brown and chocolate. Smooth and attractive with no marks or other defects, just some dirt caked into protected areas. MDS, Manley state 2.0. Ex "Johnson" for 50 cents in the 1930's or early 40's; McCawley & Grellman Auctions / Goldberg's 05/24/09:110.



57. **1809 C-6 R1 AG3. Double Struck.** Both sides are clearly double-struck, and the second strike runs 45° off-center toward obverse K5. The color is a medium brown with mostly smooth surfaces that show a bit of roughness that is not unexpected for an AG3. Low grade but the mint error is plainly visible on each side.



61. **1826 C-1 R1 EF40+.** Glossy medium brown with just a hint of wear and virtually no marks to speak of; the look of a commercial AU. Ex-John Schoentag sale 01/06/96:732.

The 2013 EAC Convention Sale, May 4, 2013

62. 1828 C-1 R1 EF40. Pretty medium tan brown with some scattered areas of darker chocolate toning. Well-struck with full star centers and nice eye appeal. No marks worth pointing out. LDS, M3.0.



63. 1828 C-1 R1 F12. Flipover Double Strike. Very nice color and sharp details, with no real problems and a completely original look. A very cool mint error, a flipover double strike that is centered on each side. The wreath is plainly visible on the obverse, while a clear 8 from the date is visible on the reverse between TA in STATES.



64. 1828 C-3 R1 MS63. A pretty mint state example with abundant mint red, perhaps 50% or more. EAC grade MS64 net MS63 due to a tiny spot of green corrosion on the reverse above the F in HALF. Other minor defects can be found, including a tiny reverse rim nick at K7. Very nice eye appeal. M-LDS, M3.0.



65. 1828 C-3 R1 MS60. Another mint state example, this one with a completely different look than the previous lot. Gorgeous golden chestnut brown with sea green overtones, a coin that I believe most will consider a "greenie." There is a spot of darker maroon toning over the bust tip that includes a tiny dollup of raised corrosion on top of the bosom. EAC MS62 net MS60; MDS M3.0.



66. 1828 C-3 R1 AU58+. Authenticated and graded by ANACS as AU58 in a blue label holder. ANACS got this one exactly right – the coin is choice AU58+ with outstanding color, surfaces, and eye appeal. The only mark is a tiny nick above star 13. LDS, M4.0.



67. 1828 C-3 R1 AU58. Authenticated and graded by ANACS as MS62BRN in a blue label holder. EAC AU58 with just a rub of wear on the hair below IB. Glossy medium brown and somewhat flatly struck, with the left star centers lacking and an area of weakness on the reverse at STATES. No marks to speak of, and with nice eye appeal. LDS, M4.0.

68. **1828 C-3 R1 EF40+**. Sharpness EF45+ with some tiny obverse marks including some light nicks on the cheek. The obverse is a glossy medium tan brown with underlying mint luster; the reverse has matching color but very minimal luster. E-MDS, M2.0.



69. **1829 C-1 R1 MS60**. PCGS MS64BN with lustrous surfaces and pretty medium brown color. There are some spots of darker toning on the obverse, plus one tiny tiny spot of red corrosion on the obverse below the F in HALF. Otherwise there are no marks to speak of, and the eye appeal is very nice. E-MDS, M2.0.

70. **1829 C-1 R1 EF40+**. AU50+ sharpness but the obverse has been cleaned and it has some underlying brightness that gives it away. Additionally, there are some nicks on the cheek that have been smoothed down, and a glass reveals some very fine horizontal scratches, perhaps album slide marks. Struck slightly off-center toward obverse K4.5. Nice looking, just not original. E-MDS, M1.0; reverse rotated 20° CW.

71. **Group Lot, 3 Half Cents, ANACS Details holders**. 1832 C-1 R2 ANACS AU details net EF45 scratched, EAC EF45 net VF25; 1849 C-1 R2-ANACS AU details net AU50 scratched and cleaned, EAC EF45 net VF30; and 1851 C-1 R1 ANACS AU details net EF40 edge filed and whizzed (not), EAC EF45 net EF40. Lot of 3 coins.

72. **1832 C-3 R2 EF45**. Authenticated and graded by ANACS as MS60BRN in an older, small white holder. EAC grade AU50 net EF45 for some light reverse scratches that are plainly visible to the naked eye. Nice medium tan brown color with glossy surfaces.



73. **1833 C-1 R1 AU58**. Mint state sharpness with a couple spots of verdigris on the obverse including one on the neck and a green spot in front of the browlock. The overall color is a medium glossy brown. LDS, M3.0, with heavy elashing plainly visible on both sides.



74. **1833 C-1 R1 AU50+**. Authenticated and graded by NGC as MS65BN (!?). The color is a pretty medium tan brown, but there is wear on the high points of the hair. Some underlying luster is visible with no marks of any significance. You might think this coin is a glaring example of the difference between EAC grading and slab grading, but it's really not: NGC just missed this one. EDS, M1.0.



75. **1833 C-1 R1 AU50**. Mint state sharpness with semi-prooflike surfaces on both sides. There are both business strikes and proofs from these dies, but in my opinion the semi-prooflike fields on this coin are not natural. There are some faint hairlines that can be seen with a strong glass, and the coin just has a different look. Additionally, there are a host of tiny rim nicks on both sides of the coin, and some more serious spots of black corrosion on the reverse. EAC MS60 net AU50; E-MDS, M2.0.



76. **1834 C-1 R1 MS60.** NGC MS64BN with dark brown color and subdued luster thanks to a lengthy imprisonment in plastic. There is a tiny spot of red verdigris in front of the neck, plus a tiny spot of green corrosion on the reverse beneath the E in UNITED. Certainly appears to be a mint state example, but the eye appeal is somewhat lacking because of the flat surfaces. EDS, M1.0.

77. **1834 C-1 R1 EF40.** In a PCI holder as MS63BRN – no comment. AU50 sharpness with obvious wear on both sides. Additionally, the portrait has several faint scratches, and the entire coin has been recolored. Glossy dark brown – an “eBay AU” is the best way I can describe the coin overall. MDS, M2.0.



78. **1835 C-1 R1 MS60.** Perhaps MS63 overall, with glossy medium tan brown color and nice eye appeal. Closer inspection reveals that both sides are possessed with tiny random spots of raised black corrosion. None of these are heavy, but there are enough of them that the coin looks “spotty.” Might still pass at the grading services as a 60+, but that’s a guess at best. EAC grade is MS60; LDS M2.0.

79. **1835 C-2 R1 AU55.** NGC MS62BN with pretty medium chestnut brown color and lustrous surfaces. There is just a trace of wear on the high points, plus some very light scratches on the neck and lower curls. A couple of tiny, dull nicks are visible on the reverse between HALF CENT, but they are minor. MDS, M2.0.



80. **1835 C-2 R1 AU55. Silvered.** A very intriguing example that has been “silvered.” The silvering is complete and thorough, with no trace of copper visible on any of the three sides. The color is of course silver but also with some green that brings to mind a 1943 steel cent. Make sure you check this one out – it’s got quite a remarkable look in person. No marks to speak of. MDS, M2.0.



81. **1837 Low-49 HT-73 R2 AU50.** Half Cent Token. AU55 details but nicely recolored and with a perfectly natural look now. Obvious wear on the high points but no marks to speak of.

82. **1837 Low-49 HT-73 R2 VF35.** Half Cent Token. Dark chocolate brown and mark-free except for a tiny scratch between H and T in WEIGHT on the obverse.



83. **1849 C-1 R2-AU58+.** Pretty tan brown with glossy surfaces. Minor contact marks only, including some tiny nicks on the cheek; the reverse is almost completely mark-free. MDS, M2.0.



84. **1849 C-1 R2- AU50.** Medium golden brown with some darker toning on the reverse and some sea green toning on the obverse. 5 points sharper but with some tiny contact marks, most notable around the mouth and at star 3. MDS, M2.0.



85. **1850 C-1 R2- MS60.** MS64BRN in an older, small white ANACS holder. EAC grade MS60 with subdued luster due to too much time in the plastic. The reverse does show about 10% mint red peaking through, and there are only a few very tiny obverse nicks that are visible only with a strong glass. EDS.



86. **1853 C-1 R1 MS62+.** In an NGC MS66BN holder. Pretty light brown with soft satiny mint luster abounding from both sides. Marks are hard to come by, but a tiny nick can be found on the chin and another nick can be seen on the reverse in the wreath beneath TE in STATES. Very attractive, lustrous surfaces with just a hint of faded mint red on the obverse. LDS, M2.0.



87. **1854 Breen 1-B PR58.** Graded PR62BN by ICG. EAC grade PR60 net PR58 due to some small, shallow laminations that cross the reverse diagonally, and for a void on the reverse rim at K7 where the coin was apparently struck through wire. The rust pit on the I in UNITED is plainly visible to the naked eye. Dark glossy chocolate brown with just a hint of mirrors on either side.



88. **1854 C-1 R1+ MS60.** ANACS small white holder as MS60BRN. EAC grade consistent with the slab grade. Original, lustrous medium brown with about 5% mint red on the obverse and 30% on the reverse. There are a couple of nicks that can be found on each side, the most notable of which is a short shallow scratch on the reverse that connects the N in CENT to the wreath below. MDS, M1.0.

89. **1854 C-1 R1+ AU58+.** ANACS small white holder as MS62BRN. Matte medium brown surfaces with no trace of luster on either side. Not really much trace of wear, either, although a light rub can be seen at a couple of places on the wreath. Sharply struck with full star centers. EDS, M1.0.

90. **1854 C-1 R1+ EF45.** Golden medium brown with darker toning around the devices, possibly recolored but fantastically done if so. Sharpness AU50 but with a couple of small black carbon spots on the reverse that immediately draw the eye. Minor contact marks only, and with nice eye appeal. MDS, M1.0.



91. 1856 in Copper Nickel Judd-177 Breen 1-B R4 Proof-12. Glossy light steel with microscopic specks of darker toning on the lower two-thirds of the obverse. Otherwise free of notable marks or other defects. Just a choice, well-circulated example that offers excellent eye appeal for the grade. Weight 68.4 grains. Ex Jack Borckardt (Collector's Cabinet) 5/25/1988; Davy Collection; McCawley & Grellman Auctions / Goldberg's 09/04/11:449.



92. 1856 C-1 R2 MS64. A pretty mint state example that is 70% red and has semi-prooflike fields. There are no contact marks to speak of, but the coin is somewhat spotty with some tiny carbon flecks on both sides, including a slightly larger one directly in front of the nose. Somewhat softly struck. MDS, M2.0.



93. 1856 C-1 R2 MS62. MS64 with light steel brown color and soft, satiny surfaces that exude mint luster. There are some as-struck low spots on the reverse around and above HALF CENT, possibly from the coin being struck through grease. Additionally, a couple of tiny nicks can be found on the reverse, one below the F in HALF and the other beneath the right stem. Very nice looking. MDS, M2.0.

94. 1856 C-1 R2 AU55. Graded MS63BN by NGC. EAC grade AU55 with minor signs of circulation, including some shallow scuffs on the cheek, nose, and behind the eye, plus another behind the lower curls. The color is an even medium brown, with a trace of red showing through on the reverse. MDS, M2.0.

95. 1857 C-1 R2 EF45. PCGS AU55, with pretty light tan brown color but with no luster apparent on either side. No marks to speak of, but somewhat flatly struck and showing a rim disturbance on top of the obverse rims between stars 12-13, possibly from a tiny clip in that area. Additionally, there is a patch of darker toning at the upper right reverse that distracts from the symmetry on that side. MDS.



96. 1857 C-1 R2 AU50. ANACS MS62BRN in an older, small white holder. EAC grade AU58 net AU50 due to a recoloring job that leaves the coin with a slightly unnatural golden brown color. There is also a tiny but noticeable circular planchet flaw beneath the 7 in the date. Decent strike with visible star centers. MDS.

97. 1857 C-1 R2 EF45. Counterstamped. The host coin is a glossy, medium brown EF45 with nice eye appeal but with several tiny nicks and rim bumps visible on each side. The obverse has been counterstamped with a small star / sunburst that covers most of the cheek.

98. 1857 C-1 R2 F12. Counterstamped. The coin coin is a dark, matte brown F12 with the letters "C.F" counterstamped on the obverse. This is a known counterstamp, Brunk F-17. The reverse shows 3-4 small rim cuts, but nothing out of the ordinary for an average F12.



99. 1793 S-1 R4 VG10. AMERI. Reverse. VF20 details with dark brown, faintly granular surfaces. There are some light scratches plainly visible to the naked eye on the obverse, plus strong rim dents at K2 obverse and K4 reverse. All details are very sharp. EDS. Ex-Jim Long via Rod Burrell 03/03/12.

100. 1793 S-1 Electrotypic Copy AU50. A pretty, well-executed electrotypic copy from the Phil Clover collection. Pretty medium brown with some of the gray base metal showing through at the highpoints of the hair. There are faint remnants of vine and bars edge from an attempt to make the third side of the coin look genuine. As far as electrotypes go, this one is very attractive, but it won't fool anybody.

101. 1793 S-3 R3- F12. AMERICA Reverse. Removed from a PCGS F15 holder. Choice medium tan brown color with nice eye appeal. The surfaces are mostly smooth, aside from an as-struck planchet flaw that runs from the eye diagonally to the rim right of LIBERTY. Additionally, there are some tiny contact marks on each side, plus some slightly more notable rim nicks. That being said, this is an exceptionally nice chain cent with very pretty color. LDS, Breen III. Ex-CVM 08/15/93.



102. 1793 S-3 R3- PCGS VG8. AMERICA Reverse. EAC grade VG10 net VG7 for minor surface roughness and an assortment of minor circulation marks, including some nicks, rim bumps, and light scratches. None of these are too strong and they obviously did not prevent PCGS from grading the coin. The color is a glossy medium brown with some red patina visible on each side. All details are visible, including a bold date, although UNITED STATES OF is somewhat weak on the reverse.

104. 1793 S-5 R4 VF20. NGC XF details, environmental damage, cleaned. EAC grade EF40 net VF20. The color is a very dark glossy brown from recoloring, and the surfaces are finely and evenly granular on each side. No major marks to speak of, although there are a few tiny rim bumps visible on each side. Very sharp details. EDS. Breen I. Ex-Tony Terranova 03/04/95.



103. 1793 S-3 R3- G6. Sharpness VG8 with a bold obverse including a strong date. The reverse is slightly weaker and shows a half-dozen dull dents at ONE CENT. The color is an original medium chocolate brown. Both sides show minor scratches and light rim bumps, none too heavy but too many to overlook. Nice eye appeal despite the defects. EDS, Breen I. Ex-Jim Long 04/03/12.



105. 1793 S-5 R4 AG3+. Choice medium tan brown color with nice eye appeal. The details are AG3+, especially on the reverse, but for all intents and purposes, the date is gone. There are a couple of shallow, diagonal cuts on the obverse, plus a stronger cut through STAT on the reverse. The edge device remains intact. Very nice despite the minor defects. Ex-EAC 2000 Auction 04/08/00 lot 102



106. 1793 S-6 R3 VG8. A couple points sharper, but with several tiny contact marks including some nicks on both sides plus some light rim bumps around the edges. The color is an original medium dark brown, and the eye appeal is nice. All details are visible including a fully readable date. E-MDS, Breen II. Ex-Coins of Merritt 02/14/10.



108. 1793 S-8 R3 VG10. Sharpness VF20 but cleaned and recolored, and with light, even granularity. The color is dark brown with medium brown highlights, and there are no serious contact marks, just rough surfaces. Removed from a PCI "VF25 Light Porosity" holder. Ex-Wenger Coins 08/12/09.



107. 1793 S-8 R3 VF25. Removed from a PCGS VF30 old green holder. Sharpness VF25+ and exceptionally nice with original medium brown color and glossy surfaces. The only defects worth noting are a tiny group of light scratches on the reverse below TED, and a tiny rim ding above the second S in STATES. Exceptionally sharp and attractive. MDS, Breen II. Ex-Jim McGuigan.



109. 1793 S-8 R3 VG8. Sharpness VF20 but holed and expertly plugged at BER obverse / under fraction reverse. The color is a very dark brown, and the surfaces show some fine granularity. Additionally, the obverse has been obviously smoothed. Ugly and abused. MDS.



110. 1793 S-9 R2 VG10+. VF35 details but very dark brown and evenly corroded. The surfaces are rough yet basically even on the obverse, but the corrosion eats a little deeper into the reverse. A notable rim bump at TY is the only other mark worth individual mention. Ex-Bowers and Merena 03/04/10 lot 121, where it was sold in a PCGS "Genuine" holder. EDS, Breen I.



111. 1793 S-10 R4 VG10+. Removed from NGC F12BN holder, ex-Heritage 04/27/11 lot 3959. This coin has close to F12 details but there are some very faint scratches visible on each side, strongest on the obverse. Additionally, the medium brown surfaces show very faint roughness under a glass. All details are strong, including the date and obverse injured rim feature. M-LDS, Breen I late.



115. 1793 S-11a R4+ VF20. Sharpness VF30 and absolutely gorgeous at arm's length. A strong glass reveals that the obverse is covered with myriad fine scratches. Too bad, because this one would be exceptional otherwise. No marks to speak of. For somebody that can look past the scratches, this one has a lot to offer. EDS, Breen I. Ex-Bowers and Merena 03/04/10 lot 120.



112. 1793 S-10 R4 G4. VG7 but dark and corroded with rough surfaces that have been smoothed down to minimize the roughness. Additionally there are a host of minor nicks, scratches, and rim bumps. On the plus side, most details remain visible including a readable date and strong vines and bars on the edge.

113. 1793 S-10 R4 PR1. Easily attributable due to the diagnostic sprig on the obverse. Mostly smooth brown with a couple tiny nicks on the obverse, plus a few slightly stronger nicks on the reverse along with a patch of bright copper. The vine and bars edge remains visible. No date. Just a filler, but pretty decent for PR1.

114. 1793 S-10 Electrotpe Copy VG10. A well-executed electrotpe copy, with both sides retaining full brown, original-looking color. The edge is flat and the seam is easily visible, so this one should not fool anybody. Ex-McCawley & Grellman Auctions / Goldberg's 09/04/11:539.



116. 1793 S-11c R3-VG8. A couple points sharper, but with an assortment of minor defects. There are a half-dozen moderate rim dings limited mostly to the obverse, a half-dozen dull dents on the obverse, some fine scratches, and finally, a more serious as-struck planchet lamination that bisects the coin vertically from the F in OF to the A in AMERICA. On the plus side, the color is an attractive medium brown with chocolate toning, all of the details are clear including a bold date and strong edge letters. Ex-Rod Burress circa 2010.

117. 1793 S-11c R3-AG3. G6 details but heavily corroded, now with sandpaper surfaces. The roughness obscures much of the details, but portions of the date can still be seen. The edge lettering and single leaf can still be made out, as well. Ex-Coins of Merritt 03/03/11.



119. 1793 NC2 Electrotpe Copy FR2+. An outstanding representation of the Dan Holmes NC2 Strawberry Leaf Wreath Cent. The color is a choice tan brown and looks quite original. The edge of course gives the copy away, as the seam is plainly visible, and there is also a long test mark that shows the gray base metal underneath. Most of us will never own a Strawberry Leaf, but here's an opportunity to own an excellent copy. Ex- Floyd Starr; William J. Ulrich (Minneapolis 07/61); Tony Terranova 10/89; R.E. Naftzger, Jr. 09/08; Unknown; Scotsman 07/23/10:267.



118. 1793 S-13 R4- VG7+. Slightly sharper but covered with microscopic roughness, strongest in the protected areas while the devices are nearly smooth. No verdigris or contact marks. Slightly glossy medium brown with chocolate toning in the protected areas. The contrast in toning accents the devices and give this piece the look of an even higher grade. The date is bold and the legends are clear. Late die state, Breen state II, with obvious swelling inside the wreath that weakens ENT in CENT. The eye appeal of this cent is quite nice in spite of the minor roughness. Ex Jim McGuigan; McCawley & Grellman Auctions / Goldberg's 01/31/11:770.

120. 1793 Smith Counterfeit on 1794 Large Cent PR1. The host coin was a 1794 large cent grading PR1, and there's probably enough detail remaining on the reverse to narrow down the Sheldon variety. The obverse has been carefully "Smithed" into a 1793 wreath cent, and those details are perhaps F12 or better. Glossy dark chocolate brown with no major defects. A nice example from a series of very collectible alterations.

121. 1794 S-19b R4 PR1. FR2 but cleaned and recolored, and with some dull dings and heavy rim dents. The date is not visible, but the remaining details are sufficient to confirm the attribution. The color is a dark brown with unnaturally brighter high points.



122. 1794 S-20b R5 FR2+. The obverse is AG3 with a readable date and choice medium brown fields with peanut butter highpoints. The reverse is FR2 with the same great color, but a large "S ." has been lightly engraved at top center. Otherwise this one would be choice. Even with the engraving, it's still pretty darn nice for a FR2! Ex-Jim Long.



126. 1794 S-28 R2 VF20. Removed from a PCGS XF40 holder, and the details certainly start out at that level. The obverse is very sharp with only a hint of roughness and several tiny nicks and scrapes, the strongest of which is a short, shallow cut above the pole. The reverse is inherently rougher, plus there is some light pitting that is heaviest along the left side. Very dark chocolate brown. EDS, Breen I.



127. 1794 S-36 R5 AG3. G5 sharpness with medium brown color and very light, even granularity. Of more serious nature is a dull dent at lower left reverse that has left the coin slightly bent and also out of round.

123. 1794 S-22 R1 F12. VF35 sharpness, with greasy black fields that are finely granular. The color is too dark and glossy from a recoloring, and that recoloring hides some faint scratches on the obverse. Additionally, each side is cursed with red corrosion. The classic "sharp but ugly."

128. 1794 S-38 R5 AG3. Sharpness G4 but there are myriad hairline scratches on the portrait that are only visible with a glass. The color is an original medium brown, and the eye appeal remains positive. The reverse is rotated 45° clockwise. EDS.

124. 1794 S-22 R1 AG3. Off-Center Mint Error. ANACS GD4 details, corroded, polished. The details are actually F12, but the polishing is harsh and the coin is very bright. There are also some light areas of corrosion on each side that adds some black to the bright copper. The only redeeming feature is that the coin is rare mint error, being struck 5% off-center toward obverse K1.5. Ex-Jack D. Young collection.

129. 1794 S-38 R5 AG3. Yet another coin that starts out as G4, but this one has a few heavy, semi-circular scratches on each side. Cleaned and recolored, now a mostly original brown except for a patch of brighter copper on the obverse. Unevenly struck such that the top left corner of the reverse is mostly worn smooth.

125. 1794 S-23 R4+ PR1. A dateless yet identifiable filler with heavy obverse scratches and some lighter scratches on the reverse. Aside from the scratches, no other defects. MDS.

130. 1794 S-40 R5+ PCGS PR1. EAC grade consistent with the slab grade. Nice tan and olive brown, and mostly smooth for the grade. Some fine scratches are visible with a glass, but otherwise this one is just well-worn. The reverse is rotated 30 deg CCW. M-LDS, Breen IV, with the die crack right of the U in UNITED plainly visible. Ex-Douglas F. Bird; Dan Demeo 1983; Shawn A. Yancey at EAC 2010; Jack D. Young 09/14 10; Shawn A. Yancey 11/21/12.

The 2013 EAC Convention Sale, May 4, 2013

131. 1794 S-41 R3 AG3. The obverse is weaker, the reverse stronger. Original medium brown with mostly smooth surfaces, but with about a dozen light rim bumps. The date is mostly gone, although bits and pieces of it can be "imagined." MDS.



132. 1794 S-42 R4 F15+. A glossy dark chocolate brown. The details are very sharp, at least VF30, but the coin is very lightly corroded resulting in finely granular surfaces. No marks or rim defects to speak of otherwise. Still very decent. MDS.



133. 1794 S-44 R1 VF30. Attractive glossy dark reddish chocolate brown. Great eye appeal with smooth surfaces and only a few trivial marks, including a barely visible rim bruise right of the second S in STATES and some dull contact marks or struck-through depressions at the fraction weakening that feature. Otherwise this cent is choice. LDS, Breen state V early. The die cracks are clear but not at their strongest. A clear double profile shows from the forehead down to the chin. Removed from a PCGS slab graded VF35, but **the label is NO LONGER with the coin.** Ex Roger S. Cohen, Jr., Superior 2/2/92:697; March Wells; McCawley & Grellman Auctions / Goldberg's 02/09:523.



134. 1794 S-44 R1 F12. Sharpness EF40 but the coin is black with porous surfaces, possibly from being buried. Despite the roughness, the surfaces retain some reflectivity on each side. Plus the details are very strong - in fact, the coin is probably really an AU to start out. In addition to the black color and fine roughness, there is also some light corrosion that manifests as green pitting that is slightly heavier on the obverse than the reverse. Last but not least, there are some fine scratches on both sides, plus one stronger scratch at reverse center. M-LDS, Breen IV.

135. 1794 S-45 R5+ AG3. G5 details but moderately corroded. The corrosion is even but somewhat heavy and erodes into the surfaces. There are also some fine scratches well-hidden within the roughness. Dark reddish brown color, and all of the details can still be made out.



136. 1794 S-46 R3 VG7. F12+ details but finely granular with some areas of heavier pitting on the obverse. The color is a dull dark steel brown, and there are no major surface marks or rim bumps that require singular mention. E-MDS, Breen II.

137. 1794 S-50 R5 G4. VG7+ and housed in a PCGS Genuine holder. Surfaces are dark glossy brown and finely porous. There are a few dull nicks well-hidden on each side, but all details are still plainly visible. Ex-Stacks Bowers 03/22/12:1273.



138. 1794 S-62 R4+ VG10. F12 but recolored a very dark glossy brown. There are some fine scratches hidden in the paint on the obverse, plus a notable rim nick at K3. The reverse has some overall light pitting, plus a tiny rim nick at K8.5. The color is a very dark brown with nicely contrasting lighter high points. Rare EDS, Breen I, before the obverse rim break develops along the left rim.

139. 1794 S-67 R3 AG3. The obverse is G5 with full date; the reverse is worn nearly smooth. Pretty light tan brown color with a rim nick at obverse K7-K8 being the best identifying mark. Nearly choice for the grade, and the color is ideal by most tastes.



140. 1794 S-68 R5 FR2+. The obverse is G4; the reverse is FR2. Dark brown fields with medium brown high points. The surfaces show minor roughness, but there are no major marks to report. The date is fully visible, and the bisecting obverse die crack makes the attribution quite simple. LDS, Breen V.

141. 1794 S-68 R5 FR2-. Sharpness close to AG3, but lightly corroded with moderately rough surfaces. Additionally, both sides are covered with heavy scratches that are visible to the naked eye, and these are heaviest on the obverse. The date remains fully visible, although the obverse die crack is only faintly visible behind the hair.

The 2013 EAC Convention Sale, May 4, 2013

142. 1794 S-71 R2 AG3. G4+ with very nice tan and darker chocolate color, but the coin is lightly corroded, giving the surfaces a mottled appearance. Not unattractive, though, thanks to the nice color this coin started with. No other major defects to speak of.

143. 1794 S-72 R2 G5. A point sharper, but the surfaces have been lightly smoothed to minimize minor roughness. Additionally, there are a few light rim bumps visible on each side. Original dark chocolate brown color. Ex-1970 EAC Convention; Tom P. Wolf; McCawley & Grellman Auctions / Goldberg's 09/10:783 group lot.

144. 1794 S-72 R2 AG3. G6 but recolored a very dark glossy chocolate brown. Minor pitting can be found on each side, plus some indistinct graffiti can be found on and in front of the portrait. The 17 in the date are gone; 9 is weak but visible, and the 4 is clear. LDS.

145. 1795 S-74 R4- FR2. Medium brown with lightly corroded surfaces. The edges have been harshly hammered all around, making the lettered edge feature no longer visible. All details on the other two sides remain visible, including a full date.

146. 1795 S-76b R1 VG10. F15+ sharpness with medium chocolate brown surfaces that show fine granularity. There are several dull nicks and significant rim bumps on each side, plus the planchet has a small clip at obverse K8. Strong details and decent color. EDS; 165.4 grains.

147. 1795 S-80 Jefferson Head Electrotpe Copy VF35. Another well-executed electrotpe copy from the Phil Clover collection. This one begins as EF45 with the same pretty light brown color as the S1 electrotpe earlier in this sale. There are some light marks that reduce the sharpness grade, including a nick on the cap. The fields are nice brown, but the highpoints of the hair and wreath that have been worn down reveal gray base metal underneath. An excellent copy for those of us who can't afford, or even find, a real one!



148. 1796 S-81 R3 VG8. Pretty chocolate brown color with VF20 details. There is some light pitting on the obverse that includes a larger spot of red and green corrosion at the ear, plus slightly rougher surfaces on the reverse. Additionally, the area around ONE CENT has been smoothed, and that area now has a lighter orange color and an unnatural blurry appearance. Probably looks better than it sounds.



149. 1797 S-91 R3 VG7. Sharpness F12 but dark from light, even porosity. There is an as-struck planchet clip at obverse K3. No marks of any consequence, just rough surfaces, and all of the details remain visible on each side. E-MDS, Breen II.

150. Group Lot, 4 Draped Bust Large Cents Dated 1796. Four draped bust cents, including S-92, S-93, S-97, and S-110. Each coin has medium brown color and a readable date. The coins grade FR2 – AG3, and a couple have minor problems. Lot of 4 coins.

151. 1796 S-94 R5+ G5. F12 but nearly black from moderate, even corrosion. Additionally, there is a dull nick on the cheek plus a tiny tiny rim nick at obverse K3, but these are much less detrimental than the rough surfaces and dark color. All details remain clear, except for the date which is somewhat obscured by the roughness yet still readable. One of the tougher varieties for 1796.



152. 1796 S-97 R3 G4. The obverse is weaker, just AG3+, but the reverse easily makes G5. Medium dark brown color with just a hint of granularity. There are a few small rim dents at lower left obverse, plus a couple more on the reverse at K4 and K10. The reverse also shows some scattered nicks and cuts. LDS, with obverse rim break cud at TY.



155. 1796 S-104 R3 AG3. LIHERTY Error. Steel brown surfaces with a bit of gloss. The LIHERTY feature is especially bold, but the date is very faint. There is a light, circular scratch that runs through the date area, plus a dozen tiny pinpricks on the reverse. but for the most part, this is a decent example for the grade.



153. 1796 S-103 R4+ AG3+. LIHERTY Error. The obverse is fully G5 with bold date and LIHERTY. The reverse is weaker, just FR2+, and with some very faint hairline scratches. The color is a nice mottled mixture of medium brown with lighter tan highlights, plus an area of darker chocolate on the obverse. There are a couple tiny nicks and rim bumps, but nothing out of line for an AG3+.

156. Group Lot, 2 Draped Bust Large Cents. Lot of 2 coins, including a 1796 S-108 VF35 nct G5 for heavy corrosion yet with readable date; and a 1798 that has been altered to read 1799, G5 nct G4 average and a decent alteration. Lot of 2 coins.

157. 1796 S-110 R3 AG3. Very slightly sharper, particularly on the obverse, but the fields and protected areas are covered with light roughness. No verdigris. A long, dull nick on the chin is the only notable mark. Rather glossy chocolate and olive, the devices a few shades lighter than the fields. The date is clear and the legends are nearly complete. EDS, before any die cracks or cuds. Ex-McCawley & Grellman Auctions / Goldberg's 01/29/12:195.



154. 1796 S-103 R4+ AG3. LIHERTY Error. VG7 but with rough, sandpaper surfaces that are mostly light tan mixed with gold. The LIHERTY error is very bold, but the roughness has virtually erased the date. All reverse details remain plainly visible. Ugly but easily identifiable.



158. 1796 S-117 R5+ AG3. VF20 sharpness but heavily corroded, now with rough surfaces that have an unnatural brassy gloss mixed in with the underlying dark brown. The roughness weakens all of the details except for the date, which is the boldest part of the coin. There is enough here to confirm the attribution, but this one is scudzy - sorry.



159. 1797 S-120a R3 VF20. EF40 with dark brown surfaces that are faintly granular beneath a strong glass. There are some faint scratches on each side, but of a more serious nature are some scattered patches of red corrosion, strongest on the reverse. The obverse is much nicer than the reverse, but even so, there is also a tiny patch of red corrosion at ER. MDS, Breen IV.



160. 1797 S-120b R2 VF20. Very similar to the S-120a with dark brown color and finely granular surfaces that are just a tad rougher than the coin above. However, this coin is free from the red corrosion that plagues the S-120a. There is a rim nick above TY, but otherwise there are only tiny, insignificant marks on either side. The gripping is visible around the entire edge. EDS, Breen I.

161. 1797 S-121b R3- AG3. The obverse is G4 with full date, bust, and LIBERTY, plus an unwelcome light scratch on the portrait. The reverse is much weaker, just FR2, but the single leaves remain plainly visible. Medium brown with very fine granularity on both sides. The gripped edge is plainly visible around at least half of the coin.



162. 1797 S-125 R5 VG7. Sharpness a point higher, with some very faint scratches and tiny nicks reducing the sharpness grade. Original medium brown with some spots of darker toning at upper obverse and lower reverse – a coin with a very nice look. The scratches are VERY faint and confined to the obverse, and the most notable of the nicks are on the reverse above the N in ONE and beneath ER. E-MDS, I late or II early, with notable swelling running upward from the 7 in the date, across the bust tip, and to the rim at K3.



163. 1797 S-129 R5 FR2. Cleaned and recolored, now a light-medium brown that is mostly original and attractive. Both sides have some notable scratches and light pitting, and these are strongest on the obverse. AG3 net FR2 with a fully readable date.



164. 1797 S-136 R3 VF35. The obverse is Choice AU50 with glossy medium brown color, full details, and wonderful eye appeal. The reverse has all of those things, too, but also shows some underlying areas of red and black corrosion. The red is "in" the planchet, while the black comes from some tiny, scattered areas of corrosion that are "on" the planchet. The arms-length appeal is great; too bad about the corrosion. LDS, V.



165. 1797 S-138 R1 F12. Double Struck. VF30 with glossy medium brown color and bold details. There is some light pitting on each side, and the surfaces have been lightly smoothed. Tiny rim bumps can be seen on each side, strongest at lower reverse. Double-struck, with a 0.5mm offset between strikes, and the doubling is most visible at the date on the obverse and at STATES on the reverse. Looks better than the net grade implies.



166. 1797 S-138 R1 VG8. Sharpness VG10+ with original medium brown color and surfaces that are covered with myriad, miniscule nicks. There is a planchet flaw / low spots around ERTY and the forehead that distract from the symmetry. M-LDS, with heavy reverse swelling at S-OF-A.

167. Group Lot, 5 Large Cents Dated 1797-1798. 1797 S-139 FR2; 1797 S-139 AG3; 1798 S-157 AG3; 1798 S-166 AG3; 1798 S-172 AG3+. A few of these are sharper with minor roughness, but all 5 coins have readable dates. Lot of 5 coins.



168. 1797 S-141 R4 VG8+. F12 with original medium brown color and a nice look to it. There are heavy rim bumps at obverse K7 and reverse K8, plus a strong dent on the E in STATES on the reverse. Additionally, both sides are covered with tiny contact marks. Nice-looking despite the minor problems. M-LDS, Breen III, with clear reverse die crack extending downward from the C in cent to the rim left of the fraction.

169. 1797 S-143 R5 G5. Sharpness F12 but cleaned and recolored, and the obverse is too glossy from being smoothed. The surfaces are lightly pitted on each side, and the color is a mixture of golden brown with darker chocolate. There is an area of slightly stronger roughness to the left of ONE CENT. The date and Stemless feature remain visible.



170. 1797 NC1 R7 FR2. PCGS G details, rim damage. The coin itself is an attractive and original G5 with warm brown color and attractive surfaces. The rim damage is a pinch at the date and top of the reverse that deforms the coin in that area, and also weakens the date. Yet the date remains visible, and the single leaves on the reverse are also bold. Important as an NC that is also a Redbook variety. EDS, I.



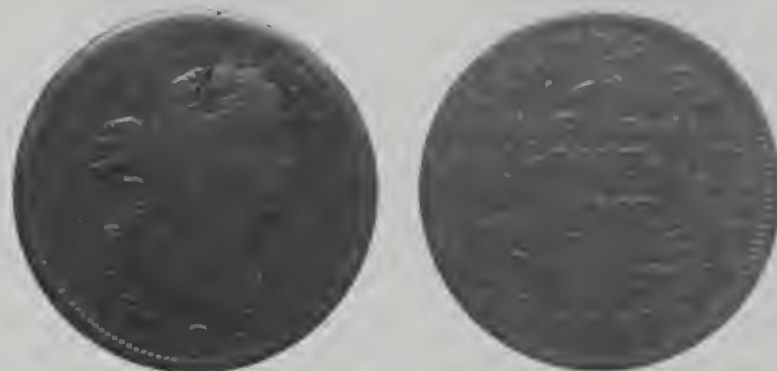
171. 1797 NC-3 R6-. VG-8. Sharpness near VF20 but covered with fine granularity that is mostly hidden under a glossy dark olive brown patina. The high points are a few shades lighter chocolate and steel brown. No verdigris, but there are a dozen tiny pitmarks in the hair and a short scratch in the field left of the hair ribbon. The date and legends are strong except for CENT, which is weak but visible. MDS, Breen state II. A fine die crack passes through the tops of TES in STATES. Called VF20 net VG8 and CC#2 in the Bland census. Noyes says F15 net VG7 and tied for CC#2, his photo #21178. The finest known example, a sharper piece that is corroded and damaged (Noyes net graded VG10 scudzy), is in the ANS Museum collection. Ex Lloyd M. Goldsmith (Lakeland Coin Exchange, Florida)-Del Bland-Jack Beymer 6/4/79-R. E. Naftzger, Jr., 2/23/92-Eric Streiner-Chris McCawley 3/97-Jack Wadlington (via Bob Grellman & Chris McCawley), 2006 EAC Sale, McCawley & Grellman Auctions 5/6/06:144; Daniel W. Holmes, Jr.; McCawley & Grellman Auctions / Goldberg's 09/06/09:221.



172. 1798 S-144 R5+ G4. VG7 but lightly and evenly pitted, and recolored a mixture of dark reddish brown and orange. The obverse surfaces conceal some very fine hairline scratches, and there are a couple of tiny spots of corrosion well-hidden inside the reverse wreath. MDS, Breen III early.



173. 1798 S-146 R5- G4. Perfect, original tan brown color with nice eye appeal. There are some tiny rim nicks on each side, plus some minor signs of circulation, but for a G4 this one is pretty darn nice. Removed from an NGC G4BN holder.



174. 1798 S-147 R5- VG7+. Sharpness VG8+ with fantastic medium tan brown color and above average eye appeal. There is a sharp 3mm nick at the top of the hair, plus a less significant nick on the neck. The reverse also has a half-dozen tiny nicks, the strongest of which can be seen at the right ribbon end. Technically probably just an average example but certainly with plus eye appeal. EDS, Breen I.



175. 1798 S-147 R5- VG7. F15 with dark brown fields and sharply-contrasting brassy golden high points. The obverse is covered with several light scratches, and both sides are plagued with scattered patches of red, black, and green corrosion that covers about a third of each side.

The 2013 EAC Convention Sale, May 4, 2013

176. 1798/7 S-152 R2 VG7. VF30 but very dark from moderate porosity and a thick recoloring job that leaves the surfaces much too glossy. Additionally, there is a shallow layer of green pitting covering the reverse that gives it more of a sandpaper surface than the obverse. The date is readable, although the overdate requires a glass to see. MDS.



177. 1798 S-155 R3 VG10. Original, attractive medium brown with a nice look. Sharpness F12 with a few light rim bumps that limit the sharpness grade. Minor contact marks only. LDS, Breen VI.

178. Group Lot, 2 Draped Bust Large Cents. 1798 S-157 F15 net G5 for black, corroded surfaces; and 1806 S-270 average VG7 with minor defects.

179. Group Lot, 3 Draped Bust Large Cents. 1798 S-162 G6 net G4 corroded; 1798 S-176 average AG3 with full date; and 1801 S-223 Fraction 1/000 G5 net G4 for scratches, nicks, and rim bumps.

180. 1798 S-163 R4 PR1. A point sharper with minor scratches, rim bumps, and surface scrapes. Original medium brown color with readable date. M-LDS Breen VI with die break left of date.



182. 1798 S-166 R1 PCGS AU50 CAC. EAC grade EF40 with glossy medium brown surfaces that show just a hint of roughness under a very strong glass. There are some very faint scratches on the obverse visible only with a glass, and a tiny spot of black verdigris above the ribbon is the best identifying mark. LDS, Breen VI, with heavy arcing reverse die crack and tiny rim break cuds above STA. The reverse is rotated 25° CCW. CAC-certified with a green sticker; pretty for the assigned grade.



181. 1798 S-165 R4 VG10. Nearly choice for the grade, with original medium brown color and nice surfaces. The best identifying mark is a tiny, faint scratch to the right of the date. MDS, Breen II. Very nice eye appeal, and nice for this grade.



183. 1798 S-166 R1 EF40+. Glossy medium and dark brown, possibly recolored but well done if so. Very sharp, but weakly struck at lower right obverse / upper right reverse – perhaps the planchet was too thin in that area. The surfaces and rims are smooth and free of any defects. LDS, Breen VI with the heavy arcing reverse die crack, plus some tiny rim break cuds above STA. The reverse is rotated 35° CCW.



184. 1798 S-166 R1 F12. VF20 with an original, medium brown obverse that shows only very tiny contact marks. The reverse is the same color, but adds some shallow red corrosion, heaviest at the lower half. A dull rim nick above ES. E-MDS.



185. 1798 S-167 R1 VF25. Glossy medium chocolate brown and very attractive. Details 5 points higher, but with a thin, shallow vertical scratch extending downward from the rim at K2 to the rim at K5. Otherwise this one is attractive. MDS, Breen V early with obverse and reverse die cracks but before the cud at ST.

186. Group Lot, 3 Large Cents Dated 1798. S-167 G5+ net G4 reverse red corrosion; S-184 G5 net G4 light reverse corrosion; and S-187 VG10 net G4 moderately corroded with rough surfaces. Lot of 3 coins, each one with a bold date.



187. 1798 S-169 R3 F12+. Sharpness F15+ on an original, light-medium brown planchet with nice color. Unfortunately, there are some harsh scratches at the E in CENT, an obvious attempt to alter that letter into a U. There are also a half-dozen tiny rim ticks scattered between both sides, but they are easy to overlook. Definitely a “too bad” coin.

188. 1798 S-176 R4 AG3. G4 but nicely recolored a mottled mixture of light and medium brown. There are some light scratches on each side, strongest on the obverse. LDS.



189. 1798 S-177 R4+ G6. A point sharper but with very fine roughness that is heaviest at the top left corner of both sides. No major surface marks, but I do note tiny rim bumps at K12 and K6 reverse. Original dark steel and chocolate. E-MDS, Breen II.



190. 1798 S-178 R5+ FR2. Reverse of 1796. The obverse is AG3 with a very strong date, but the reverse is almost worn smooth. Fortunately, AMERI is faintly visible on the reverse, and the connected AM helps confirm the attribution since the single leaves are not visible. Further confirming the S178 attribution is the die state, with several die cracks plainly visible through the date. Basically smooth and just well-worn, a nice example for this grade. Ex-Clay Everhart 07/03; EAC 2011 05/14/11:224.



192. 1798 S-179 R2 PCGS VF30. EAC grade VF25 with attractive medium brown color and original surfaces. There are some tiny contact marks on the neck, plus some dirt within the reverse crevices that attest to unmolested copper. The hair definition is exceptionally sharp. MDS, Breen III.



191. 1798 S-179 R2 VF35. Expertly cleaned and perfectly recolored, now an attractive chocolate brown that is just one shade too glossy. There is a hint of roughness on the reverse, but for the most part the coin faces up with smooth surfaces. EF45 and virtually mark free save for a tiny dull depression between S-O on the reverse. M-LDS, Breen IV. Very attractive



193. 1798 S-180 R5+ VG10. Dark brown VF20 with lightly corroded surfaces that are evenly rough. Additionally, each side displays some fine scratches. The obverse is slightly better than the reverse, and all details remain plain despite the defects. Extremely rare EDS, Breen I.



The 2013 EAC Convention Sale, May 4, 2013

194. Group Lot, 2 Large Cents in Rare Die States. 1798 S-186 G5 net AG3 light corrosion, LDS Breen IX with retained cud at ITED; and 1801 S-224 G4 net AG3 minor roughness, M-LDS, Breen IV, with reverse rim break developing above AME.

195. 1798 S-187 R1 G5. VG10 with dark brown fields and lighter brown high points. The surfaces are faintly granular, and there is some light pitting at the lower right reverse. Additionally, myriad scratches are plainly visible on the reverse. E-MDS.

196. 1799/8 S-188 Electrottype Copy F12. VF20 and very dark brown with lighter high points. Another copy from the Phil Clover collection, although this one is not as attractive as the S1 or S80 copies from earlier in this sale. Both sides retain most of their brown color, although a couple of abraded spots on the reverse rim reveal gray coloring beneath. The edge seam is plainly visible on the reverse side. Typical "mushy" appearance, but the overdate is readable and all details are strong for this grade. Still a decent copy.

197. 1800/1798 S-190 R3 VG8. An original VG10 with some light crud covering each side that appears to be removable. Decent looking thanks to the originality, and the obverse is mostly mark-free. There is a pair of tiny rim nicks on the reverse at K8-K9, but this side is a perfect match to the obverse in terms of surfaces, color, and crud.

198. 1800/1798 S-191 R3 VG10. VF30 but recolored a very dark glossy brown, and the surfaces are evenly rough from light corrosion. The obverse has a notable rim bump at K5, and the reverse has a nick atop the rim between D-S. Additionally, there is a scuff on the reverse from the E in ONE to the T in CENT that reveals bright copper underneath.

199. 1800/79 S-192 R3 F12. Very sharp with bold hair definition. The surfaces are very dark, nearly black, from light even porosity. There is a shallow but notable horizontal scratch on the obverse that runs from the top of the ribbons across the hair to the top of the eye. Clearly below average, but the surfaces retain a bit of gloss, and the undertype 7 and 9 are especially bold. EDS, Breen I.

200. 1800/79 S-192 R3 F12. Sharpness VF20, but the coin has been lacquered, leaving the fields a very dark brown and the highpoints a lighter brown, with both sides now entirely too glossy. Additionally, there are light contact marks scattered across each side. M-LDS, Breen III, with strong reverse die crack through ICA and the fraction.



201. 1800/79 S-194 R3 VG8+. The surfaces are very dark, nearly black, from light even porosity. The obverse shows some well-hidden, light scratches under a strong glass, plus a few tiny pinpricks on the lower bust. The reverse is mostly mark-free. So no major marks just too dark and a little rough. M-LDS, Breen VI, with a series of jagged rim breaks beneath the fraction that continue upward to the right above ICA.

202. 1800/79 S-195 R5 FR2. VG8 but heavily dented and damaged, and with lightly corroded surfaces. Scudzy, yet the overdate remains visible and the coin is attributable.

203. 1800 S-199 R4 G4. An average Good with somewhat matte, dusky brown surfaces that show minor signs of contact on each side. Lot 397 from the Chalkley sale.

204. 1800 S-199 R4 AG3. G6 but moderately corroded, leaving the surfaces evenly rough on each side. The color is a still-decent medium brown, and the details are all plainly visible. LDS, Breen IX.

205. 1800 S-200 R3 VG10. A sharp EDS example, state I, which Breen considered rare. Details are VF25+, but the coin has been cleaned and recolored, an unnatural medium brown with orange undertones. The obverse has some light pitting around LIB, the reverse more extensive black corrosion covering much of UNITED STATES. Sharp, but(t) ugly.



206. 1800 S-200 R3 AG3. Dark brown with lighter highlights, decent for a low grade example. The obverse is stronger, easily G4, with all details bold. The reverse is a little weaker, some of which can be attributed to the swelling associated with the late die state. Just a little rough and with some minor nicks, but wholly acceptable for an AG3.



209. 1800 S202 R4+ G4. Sharpness G6 with very dark brown, matte surfaces that are grainy beneath a glass. The obverse shows several faint hairlines, plus a more prominent scratch from the nose to the rim. Very dark brown with green undertones, and the reverse adds some scattered raised green corrosion around the ribbon and fraction. MDS.



207. 1800 S-201 R4+ G6. Very slightly sharper with traces of microscopic roughness on the obverse and some minor contact marks on both sides, none notable. Rather glossy chocolate and olive brown. The date is bold and the legends are complete. Ex-McCawley & Grellman Auctions / Goldberg's 09/14/08:364.

210. 1800 S-205 R4 G6. Smooth light brown and very attractive. Minor scratches and contact marks are visible on each side, but you have to hunt for them and they are minor enough to have no effect on the grade OR the eye appeal. LDS, and very nice for a G6.



211. 1800 S-208 R3 NGC F12BN. EAC grade F12 net VG10 due to a dusting of light corrosion on the forehead and some light reverse scratches, the strongest of which is visible at TES-O. Original surfaces with very dark chocolate brown color. LDS. Breen IV, with a strong rim break over TY stretching down the rim to K2, plus a much smaller yet distinct rim break cud at K3.



208. 1800 S-202 R4+ G4. A point or two sharper, but the coin has been nicely recolored a choice tan and golden brown, and the recoloring covers some faint hairline scratches on each side. These are most notable in the obverse fields in front of the portrait, where they are plainly visible to the naked eye. Very nice eye appeal regardless. M-LDS.

212. 1800 S-210 R5+ AG3. G5 with medium chocolate brown color but with fine sandpaper surfaces. There is a small patch of red erosion at the nose, but no other notable marks. The date is obscured by the roughness, yet remains readable. EDS.



214. 1801 S-213 R2 VF20. PCGS VF30 in an older green holder. EAC VF20 with completely original medium brown color. Sharpness a few points higher, with some tiny nicks on each side, none heavy. There is a splash of darker maroon toning around ONE CENT on the reverse. M-LDS, Breen VII with the wavy cracks in front of the face plainly visible, and with some additional light die cracks and clashing at lower reverse. Nice original color for a variety that typically comes dark.



215. 1801 S-219 R2 G5. Three Errors Reverse. G6+ but cleaned and recolored, and now with an unattractive combination of dark brown fields with salmon high points. Additionally, there is some light pitting on each side that is a bit heavier on the obverse. M-LDS, Breen VI, with multiple reverse die cracks. The three errors are each plainly visible.

216. 1801 S-221 R2 VG8. Corrected Fraction 100/000. Graded by NGC as VF details, corrosion. EAC grade VF25 net VG8 for moderately rough surfaces caused by overall corrosion. The color is very dark brown, and there is also a tiny clip at obverse K8. The date and the corrected fraction feature are both plainly visible despite the rough surfaces.

213. 1801 S-213 R2 VF25. Sharpness VF35 but very dark chocolate brown with splashes of dark olive green. The planchet is very finely porous under a strong glass, with a dusting of light corrosion within the crevices. No major marks to speak of. The surfaces are glossy and the eye appeal is decent despite the description. MDS, Breen V with the wavy cracks in front of the face plainly visible. Recorded in the Bland census as VF30. Ex-William Birr; C.F. Gordon, Jr.; Tom Morley 07/79; Delmar N. Bland; Phil Ralls.



217. 1801 S-223 R1 F12. Fraction 1/000. Attractive glossy chocolate and medium brown. Smooth surfaces displaying only tiny contact marks, including a small nick on top of the 8 in the date and a thin planchet void at the dentils left of the first S in STATES. MDS, Breen state III. A clear cud break at RTY connects the R & T to the rim above and extends down the right curve of the R. Removed from an NGC slab graded F15 (NGC label included, and it shows the attribution and Reiver provenance). Ex Jules Reiver, Heritage 1/24/06:19506; Daniel W. Holmes, Jr. 03/06; McCawley & Grellman Auctions / Goldberg's 09/06/09:425.



218. 1801 NC3 R6+ AG3. Fraction 1/000. The obverse is close to G4, but "H H" has been deeply countermarked into the center of that side, and the punch causes the reverse to bulge out in that area. The date remains plainly visible, and the 1/000 fraction can be made out with the naked eye. Glossy medium brown with shallow maroon verdigris limited mostly to the obverse. An important variety to anybody working on an error fraction, Sheldon, or NC collection.

219. 1802 S-231 R1 G4. Stemless Reverse. Medium brown with some black and maroon mixed into the patina. VG7 details but with three strong dents on the reverse, one of which nearly penetrates the coin. MDS.

220. Group Lot, 4 Large Cents, Each One Altered. 1802 S-232 crudely altered to read "1804,"; 1803 S-252 smashed into a half cent on each side such that the half cent design is faintly visible on the surfaces; and two classic head large cents that have been altered to read "1815." Lot of 4 coins, each one altered and from the Phil Clover collection.

221. 1802 S-238 R4 G6. Mottled medium brown color with shades of burnt orange. The obverse is covered with several faint scratches and tiny nicks, plus there is an area of red corrosion around the date. The reverse is also well-circulated, but looks a little better than the obverse. M-LDS, Breen IV. VG8 details.



222. 1802 S-241 R1 G6. Stemless Reverse. Sharpness better than VG8, but the entire coin is lightly corroded, strongest on the reverse, and the obverse has several faint nicks and scratches. Medium brown mottled color, most likely the result of a recoloring job. Terminal die state, Breen V, with two reverse rim break cuds: one at TATE and the other at F-A.

223. 1802 NC1 R5+ VG8. Very sharp EF45 but the coin is black with rough surfaces from heavy corrosion. LDS, Breen IV, with the vertical, bisecting obverse die crack very bold. All of the details are still visible despite the rough surfaces, and the hair details are especially strong. Sharp but ugly.

224. 1802 NC1 R5+ VG7. VG10 sharpness with original medium brown color, but both sides are covered with myriad tiny nicks, and the coin is slightly bent. EDS, Breen I, with the tiny nub off the bottom of the bust plainly visible.



225. 1803 S-256 R3 F15. NCS AU details, corroded. EAC grade AU50 with little wear and underlying mint frost. The corrosion is very light and even and most closely resembles a light coating of rust on a gun barrel. Additionally, there is a small planchet flaw at the D in UNITED and into the wreath below. EAC grade AU50 net F15, but even so, still not a bad looking example. MDS, Breen IV.

226. 1803 S-260 R1 G4. Sharpness G6 but the coin has been cleaned and lacquered, leaving the fields an unnaturally glossy black and the highpoints a bright orange. Additionally, there are some light scratches hidden in the coating, and there is a dull dent off the bust tip. Although the contrasting colors are completely unnatural, they do result in some sort of unexplainable appeal.



227. 1803 S-261 R2 F12+. Sharpness F15 with some tiny contact marks and light rim bumps limited mostly to the obverse. The color is a medium brown, and the fields possess a bit of gloss. M-LDS, Breen V, with arcing obverse die crack through the curls and the date.

228. 1803 S-265 R4 G6. Completely original medium brown with nice eye appeal. There is some minor red verdigris inherent to the upper left corner of the obverse, but for an S265, this one is pretty nice for the grade. The date and fraction are each bold. MDS.

229. 1803 S-265 R4 AG3. Slightly sharper with dark brown and black surfaces that are faintly rough, giving the coin a "mushy" appearance. The date and fraction are each plainly visible.

230. 1803 NC1 R5+ FR2. Sharpness AG3 with a mostly smooth planchet, but there are some light scratches on the obverse that are visible to the naked eye. Mottled medium and dark brown. LDS, Breen II.



231. 1804 S-266c R2 VG10. The look of a F12 with medium brown surfaces that are glossy yet very faintly rough under very strong magnification. No marks to speak of, aside from a tiny rim bump to the right of the obverse rim break. LDS, Breen IV / Noyes C, with a rim break cud on the obverse at RTY and another on the reverse at MERIC. A very attractive 1804.

232. 1804 S-266a COPY VG10. A sharp F15 copy in base metal from the Phil Clover collection. Very dark steel gray and brown, with some light pitting on the obverse plus a few notable rim defects on both sides. Good enough to fool a regular collector, but the coin is too heavy in hand, and the color is dead wrong, too. But great for a hole-filler.



233. 1804 Unofficial Restrike of 1860 R3 MS60. Uncirculated, but the color is a glossy, extremely dark chocolate brown with medium brown mixed in, possibly from recoloring. No marks to speak of, aside from the typical pebbly surfaces as a result of being struck from rusted dies.



234. 1804 Unofficial Restrike of 1806 R3 EF40. Medium brown color with shades of red orange. Typical pebbled surfaces from rusted dies.

235. 1805 S-267 R1 VG8. A couple points sharper, but lightly corroded with some faint obverse scratches and a notable nick between ONE CENT on the reverse. Medium-dark brown.

236. 1805 S-268 R3 VG7. VG8+ in terms of sharpness, with faintly rough surfaces that are rougher on the reverse. The obverse shows some hairline scratches plus a rim bump right of the date. The reverse has a shallow scratch through CE in CENT. Dark chocolate brown color.



237. 1805 S-269 R1 VF20. Breen Plate coin for die state II. Sharpness VF30 and at first glance a lovely tan example with sharp details. Closer inspection reveals that the coin has been burnished and recolored to achieve the pretty appearance – plastic surgery for copper, if you will. M-LDS, Breen IV, which is interesting in itself since this is the plate for II! Minor nicks only, including a pair of notable ones behind the lower curls, plus the reverse shows some areas of darker carbon toning. Looks great, just not original.

238. 1806 S-270 R1 VG10. Pretty medium brown color with darker chocolate toning over glossy surfaces. Unfortunately, the obverse is covered with a few heavy scratches that almost appear to “cancel” the portrait. The overall details are VF30 or better, and the eye appeal is decent – the scratches are heartbreaking. MDS.



239. 1806 S-270 R1 G4. Counterstamped. The host coin is an original dark brown “Good.” The obverse has been counterstamped with “J.B.P.” inside an ornate rectangle. No damage or other defects to speak of. The date is readable but the lower half is quite faint.



240. 1807 S-271 R1 VF20. Sharpness VF25 with extremely faint granularity visible under a strong glass. Additionally, there is a dusting of light red corrosion behind the head where the comet is typically seen. This is an early die state with no trace of the comet feature but with evidence of clashing behind the hair. Original medium matte brown color with a nice look. There is a tiny planchet clip at RT obverse. Ex-CVM 03/90; Fred Iskra.

241. 1807 S-271 R1 VG7. F15 sharpness with dark brown, evenly granular surfaces. Additionally, there is a notable rim nick on each side of the coin, the strongest of which is found over the first T in STATES on the reverse. MDS with the comet plainly visible.



242. 1807/6 S-273 R1 VF20. Large 7 Overdate. Very sharp, at least VF35, with glossy, original brown surfaces and strong details. However, there is some light pitting plainly visible on each side, roughest at the date and at ES-OF on the reverse. There is also a shallow yet bright scratch on the reverse running downward between TE in STATES into the wreath below. LDS, Breen IV, with a couple of shallow rim break cuds above STA on the reverse. Ex-McLaughlin & Robinson; CVM; Fred Iskra.

243. 1807/6 S-273 R1 VG10. Large 7 Overdate. Original surfaces with medium dark brown, matte color. There are several light scratches on each side, heaviest on the obverse, plus a few spots of light corrosion. F15 net VG10; EDS.

244. 1807/6 S-273 R1 VG7. Large 7 Overdate. Original medium brown with a pleasant look. VG10 sharpness, but the obverse is covered with myriad tiny nicks, and the reverse shows some red corrosion hidden within the devices. E-MDS.



245. 1807 S-274 R2 F15. Sharpness VF35, with very dark brown color and surfaces that are faintly granular under a strong glass. The real villain is some tooling in front of the portrait, apparently an attempt to smooth out some heavy scratches underneath. There are also some light scratches on the reverse between ONE CENT. E-MDS, Breen II. Ex-McLaughlin & Robinson; CVM; Fred Iskra.



246. 1807 S-274 R2 F15. Sharpness F15+ with a very pretty and original medium brown planchet. The only defect are some faint, shallow scratches above CENT on the reverse. Otherwise this one would be slightly above average for this under-appreciated variety. E-MDS.



247. 1807 S-275 R3 F15. The overall look is an original medium peanut butter brown with some darker chocolate toning. Sharpness VF25, with light pitting and faint scratches on the obverse, plus some patches of light red corrosion on both sides. EDS, Breen I. Ex-Don Valenziano 12/89; Fred Iskra.



250. 1808 S-278 R3 VF30. Glossy medium brown with sharp details that are easily 5 points higher. The only deduction is for some tiny nicks on each side, none too notable but too many for the grade. The best identifying mark is a tiny, dull circular nick beneath the bust tip. Very nice for a classic head. E-MDS, II.



248. 1807 S-276 R1 F15+. VF25 with dark steel brown color and finely granular surfaces. There are some light scratches around the L in LIBERTY, plus some minor damage at the right side of the fraction. The reverse is rotated 55° CCW. M-LDS, Breen III. Ex-Tom Reynolds 08/90; Fred Iskra.

251. 1808 S-278 R3 G5. Sharpness G6 but with microgranular surfaces that give the coin a very dark and "mushy" look. Otherwise no marks to speak of, and a medium dark brown color. All details readable, including the date. LDS.

252. 1808 S-278 R3 G5. VG10 but the obverse has some heavy scratches and some tiny dull dents around star 8. For good measure, the coin has also been lacquered - no idea why. The obverse is dark brown and somewhat ugly due to the defects, but the reverse is much nicer with a prettier medium tan brown color. LDS. The date is readable but very faint.



249. 1808 S-277 R2 VF30. Sharpness EF45+ with the look of a commercial AU. The obverse is covered with myriad fine scratches, the strongest of which cross the coin horizontally from star 5 across the portrait into star 8. The reverse is much nicer and escaped the scratches, although there a few tiny rim nicks along the right side. MDS, Breen V.

253. 1809 S-280 COPY F15. An electrotype copy with F15 details and some minor obverse scratches. The color is a mixture of chocolate brown and lighter tan brown, and the surfaces have that pebbly look always seen on electrotypes. Ex-RSB-I 09/30/86:414; Phil Clover.

254. 1810/09 S-281 R1 F12. Sharpness VF25 with lightly granular surfaces that resemble fine sandpaper. On the plus side, there are no obvious circulation marks on either side, and the overdate feature is still visible. Very dark brown with slightly lighter color and some gloss on the highpoints. MDS.

The 2013 EAC Convention Sale, May 4, 2013

255. Group Lot, 5 Large Cents Dated 1810. Each coin grades G5-G6, with a fully readable date. All 5 coins are normal date varieties, and slightly below average yet still very decent for the grade.

256. 1811/0 S-286 R3 G4. A point sharper with very faint roughness on both sides plus some hairline scratches hidden in the roughness at the lower obverse. Dark brown color with a readable overdate.

257. 1811/0 S-286 R3 G4. VG8 or sharper, but heavily corroded. The color is now black with green corrosion on the obverse and red corrosion on the reverse. Scudzy, but the overdate feature is particularly bold.



258. 1811 S-287 R2 F15. Close to VF20 with excellent glossy medium brown color and strong details. A glass reveals some faint obverse hairlines, plus a dusting of light corrosion embedded around ONE CENT on the reverse. But still nice despite the minor defects. M-LDS.



259. 1812 S-291 R2 F15+. CHOICE for the grade with dark chocolate brown, glossy surfaces that are nearly mark-free. The only defect to be found, and it is minor, is a tiny nick on the rim above CA on the reverse. MDS with obverse die crack running through the left stars and extending upward across the top of the head.

260. Group Lot, 2 Classic Head Large Cents. 1812 S-291 VG7 old cleaning; and 1813 S-293 VF35 net VG10 for moderate corrosion and rough surfaces. Lot of 2 coins.

261. Group Lot, 4 Large Cents 1812 Large Dates. A lot of 4 large cents, all dated 1812 with large dates. Each coin is a solid, average Good with strong date. Lot of 4 coins.

262. Group Lot, 5 Large Cents 1812 Small Dates. A lot of 5 large cents, all dated 1812 with small dates. The grades include one AG, three G, and one VG. These are mostly decent examples, either average or slightly below average yet not ugly. Lot of 5 coins.

263. Group Lot, 6 Large Cents Dated 1814. A lot of 6 large cents, all dated 1814 with full dates. Four are Good; two are VG; these are mostly below average but only slightly so, with no ugly ones. Lot of 6 coins.

264. Group Lot, 13 Oddball Large Cents. A "so random" group of large cents, ranging from a 1797 with a date to an 1857 Box cent. In between are some counterstamps, alterations, holed coins, laminations, you name it. Most of these have damage of one kind or another, but 12 of the 13 coins have readable dates. An assortment of oddballs from the Phil Clover collection. Lot of 13 coins.

265. Carvin Goodridge Archives: A treasure trove of copper pedigree and price information prepared by long time EAC member Carvin Goodridge. Fifteen items consisting of: Five 2.5" binders: Collection Records 1793 - 1817; Collection Records 1816 - 1839; Collection Records 1840 - 1857; Sales Records 1793 - 1814; Mint Errors. Also, Six 1.5" binders: For Sale; Large Cents Sold; Early Dates; Sales Records 1816 - 1839; Sales Records 1840 - 1857; Condition Census; Sales of Hard Times Tokens. Also, One 1" binder: Dealer Summary. One large D-ring binder: Large Cents 1840 - 1857 CG Collection. One photo album titled "HALF CENTS 1793 - 1857" with color photos of obverses and reverses of 54 specimens, most with pedigree information. Also, price lists issued in 1991 and 1992. For the EAC'er who enjoys history. Buyer must pay all shipping charges



266. 1816 N-2 R1 NGC MS63BN. Mint state sharpness with glossy golden brown color, but there is a dull but notable scratch at the back of the neck, plus a couple of orange spots on the reverse that disrupt the color on that side. MDS with heavy obverse rim break above stars 8-11. EAC grade MS60 net AU58+; one of the Randall Hoard varieties.



267. 1816 N-4 R2 VF30. Mottled medium brown with some darker patina mixed into the reverse. Sharpness VF35 but with an area of light corrosion at 18 in the date. Attractive with no singular contact marks worthy of mention. LDS.

268. 1816 N-7 R3 PCGS MS64BN. EAC grade MS62 with lustrous, golden brown surfaces and very few signs of contact. The most notable mark, and it is faint, is a shallow scratch between F-A on the reverse. MDS. Ex-Jon Hanson; Jack Collins; C. Douglas Smith; March Wells; McCawley & Grellman Auctions / Superior 02/07/00; 1734; Tony Terranova; CVM 09/05; March Wells.



269. 1817 N-1 R4 EF40. 5 points sharper with somewhat glossy dark brown surfaces that show a bit of roughness under a strong glass. Additionally, there is a small spot of corrosion on the reverse in the denticles above ST, plus two fine scratches below those same letters. LDS with multiple obverse die cracks and a small reverse rim break at AM.

270. Group Lot, 2 Middle Date Large Cents. 1817 N-3 R2 LDS with "mouse," G6 net G5 average brown; 1822 N-9 R5- F12 net G6 dark and moderately corroded. Lot of 2 coins.



271. 1817 N-16 R1 VF30. 15 Stars Obverse. Sharpness EF45 with very pretty mottled medium brown color. However, there are some faint scratches in front of the face, plus a more serious rim repair on the reverse above OF-A. The repair can be easily spotted as the color is notably different there, and some the tool work remains clear above the O. Too bad, because otherwise this is an attractive example of a Redbook variety.

272. 1817 N-17 R4 F12. VF35 sharpness but very dark, nearly black, from an evenly porous planchet that also shows some light corrosion on each side. Additionally, there is a dull scuff extending from the lower curls into the rim between stars 11-12. E-MDS.



273. 1818 N-2 R4 VG10. Sharp VG10 with medium steel brown color that includes some blue and green sheen, perhaps from an ancient cleaning. Minor nicks only. E-MDS.



274. 1818 N-2 R4 NGC VG Details. EAC VG8 net VG7 for some scratches on the obverse, somewhat faint across the portrait but slightly heavier in front of the nose. The real story here is the M-LDS, with a raised retained cut on the reverse at NIT, and a slightly raised retained cud at TED-S. Original, dusky brown.

275. 1818 N-4 R4+ AG3. Original medium brown and nearly choice for an AG3: the only defect is a trio of tiny pinpricks that form a small triangle beneath the N in ONE on the reverse. LDS with ridge line swelling on each side of the head.

276. 1818 N-5 R3 VF25. Original medium brown with a bit of gloss. There is a very small planchet clip at obverse K9. Average marks for the grade, and nice eye appeal. LDS.

277. 1818 N-7 R1 VF25. 5 points sharper but expertly recolored a glossy medium-dark brown. The toning is well-done and even, aside from a tiny bright spot in front of the mouth. Only minor circulation marks and a rim nick or two are present. E-MDS



278. 1818 N-7 R1 VF20. Thin Date with "Twisted" Stars and Dentils. Sharpness VF35 but mottled black and orange color from a poor recoloring job. Additionally, the surfaces are faintly rough from light even corrosion. Rare EDS referred to as the "Twisted Sister." The obverse was struck with the normal N-7 die but the die apparently twisted upon impact (perhaps it was loose in the press) causing the date and stars to become distorted. The date digits are very thin and the points of the stars are bent, especially the outer points which are bent in a counterclockwise direction. The twisting also affected the dentils leaving them thinner than normal. There are now 5 of these known in this die state, Dan Holmes' 05/10:93 being the finest known, the other 4 in much lower grades.



281. 1820 N-13 R1 PCGS MS64BN Naftzger Collection. Large Date. Lustrous light olive and chocolate with overtones of bluish steel mixed with attractive sea green, an attractive tone called "a greenie" by C. Douglas Smith. Traces of faded mint color remain in protected areas of the reverse. The surfaces are satiny and virtually flawless, a microscopic tick or planchet flake just below the curl on the cheek is the best identifying mark. MDS, the usual Randall Hoard die state. Our grade is MS64. Ex Coin Galleries 2/11/88:1090-Tony Terranova 2/18/88; R.E. Naftzger, Jr.; McCawley & Grellman Auctions / Goldberg's 02/01/09:111; March Wells.



279. 1819 N-2 R1 F15. Large Date. Sharpness exceeds VF20+, but the coin has been recolored and there are a couple of notable nicks on the portrait. Medium brown color with a hint of gold that looks mostly original. MDS with heavily rusted reverse die.

280. 1819 N-6 R1 VF20. Mostly chocolate brown with subtle hints of lighter orange brown on each side, likely from recoloring. Sharpness VF25+ with no major marks to speak of.



282. 1820 N-13 R1 PCGS MS64RB OGH. Housed in one of the earliest and slightly smaller PCGS holders. Light-medium brown with more than 20% mint red remaining. No marks to speak of; the best identifier is a spot of darker toning on the reverse between F-A. EAC grade MS62; MDS.

283. 1821 N-2 R1 F15+. Recolored a mixture of medium brown, darker chocolate, and lighter orange, with the orange mostly limited to the area in front of the face. Additionally, there is a tiny nick in the denticles above star 13. VF20 sharpness, net F15+.

The 2013 EAC Convention Sale, May 4, 2013

284. Group Lot, 3 Middle Date Large Cents. The first coin is an interesting 1822 that has been crudely fashioned into a button, VF details otherwise; 1824 N-2 R2 F15 average; and 1825 N-3 R3 F12 net VG10 for a spot of obverse corrosion. Group of 3 coins.



285. 1822 N-5 R3 NGC VF35BN. EAC grade VF20+, with original, dark brown surfaces. There is a collection of tiny nicks on the lower neck, but nothing out of line for the grade. LDS and a solid example.

286. 1822 N-13 R5 VG7. Sharpness VF25 but heavily corroded. Glossy medium brown with bright copper mixed into the obverse and darker black mixed into the reverse. Ugly, but it's an N-13!



287. 1824/2 N-1 R1 VF25. Sharpness VF35+ but recolored and with some minor tooling plainly visible around ONE CENT on the reverse. The recoloring is mostly even on each side, but it does not quite look natural. Additionally, the area around the date has some erosion that gives the coin a noticeably lighter gray color in that area. The overdate feature remains plainly visible to the naked eye. EDS.

288. 1825 N-1 R4 VG8+. Sharpness exceeds F12+, but the coin has been recolored and there are a couple of reverse digs at E in CENT, probably an attempt to alter it into a U. The recoloring job is not perfect as there are some bright spots on the obverse and some darker patches on the reverse, but surprisingly the overall look is still very decent. MDS.

289. Group Lot, 2 Scarce Die States. 1825 N-10 R3 Nice G4 with an obverse rim break at star 7; and 1848 N-6 state (e) VF35+ net VF30 with a reverse die crack above MERI. Both coins are average. Lot of 2 coins.



290. 1826 N-5 R2 VF25. Very pretty medium tan color with sharp details. At least 5 points sharper but with too many light contact marks, mostly visible on the obverse. There is also a pair of tiny carbon spots on that same side. Nice eye appeal. E-MDS.



291. 1826 N-6 R2 VF25. From the Superior sale of 05/29/05, lot 1583. Glossy medium brown with a couple of tiny areas of black verdigris visible on each side. Each side also shows some minor nicks here and there, but none deserve individual mention. EDS.



292. 1826 N-7 R1 VF20. Most of the coin is a pretty medium tan brown. However, the obverse shows some red patina in front of the portrait, and the reverse has a small circle of very dark brown toning at the center. Additionally, there is a notable dig on the cheek in front of the ear. EAC VF25+ net VF20; MDS with a slightly rotated and clashed reverse.

293. 1826/5 N-8 R2 F15. Overdate. Sharpness VF25 but the coin is finely granular with dark brown, matte color. Additionally, there is a shallow yet notable scratch that extends at an angle from the hair above the ear downward into the neck. E-MDS, and the upper stroke of the 5 can be seen inside the top of the 6 with the aid of a glass.

294. 1826 N-9 R3 F15. Sharpness VF20 with dark glossy brown surfaces that exhibit some green undertones. Just a couple of tiny nicks on the obverse, but the reverse shows a prominent scratch from the E in ONE through the wreath and into the top left upright of the M in AMERICA. There is also a tiny rim chip between D-S. EDS.

295. 1827 N-10 R4+ G5. A point higher but with somewhat below average, faintly rough surfaces that show some light scratches plus a notable cut on the neck. The color is a medium-dark brown with lighter highpoints. The reverse has similar surfaces, plus a light but bright scratch above ATE. Looks better than it sounds, and those looking for a low-grade N-10 are likely to be satisfied with this example.

296. 1827 N-12 R5 AG3. VG7 details but moderately and evenly corroded on both sides. The date is plainly visible yet mushy, and the color is a mixture of very dark brown and burnt orange. EDS.

297. 1828 N-9 R4 F15. Glossy medium brown with golden brown highpoints. A well-pedigreed example that spent time with both Maas and Rasmussen, among others. There are some tiny rim nicks that do not detract from the sharpness grade, which is close to VF20. EDS.



298. 1828 N-10 R1 ANACS AU55. Small Wide Date. Housed in an older, small white holder. EAC grade AU50 net EF45+ due to a couple of small, dull nicks on the portrait. The color is an even and attractive medium brown, and the coin exhibits soft mint luster on each side. Nice color and eye appeal. MDS.

299. 1828 N-11 R2 VF25. Looks like a mint red large cent until you look closer. The details are not mint state, they are EF45 at best, and the entire coin has been whizzed to give it that red/maroon look. Additionally, there is a notable pinprick at star 2 that draws the eye. Not an ugly coin, but not original either, and this one won't fool an EAC member.



300. 1829 N-9 R4 VF25. Small Letters Reverse. Double Struck with Rotation. Ten points sharper but there is a scrape on the rim and dentils right of star 11 reaching nearly to the outer point of that star and a light rim bruise at the R in AMERICA. Otherwise the surfaces are smooth and virtually flawless. Glossy chocolate brown with medium brown toning in protected areas, especially on the obverse. EDS with hard, slightly reflective obverse fields and no die cracks. This cent was clearly double struck. Both impressions were centered on the planchet, but the obverse was rotated about 20 degrees between strikes leaving an impression of the nose on the forehead, the chin on the nose, and other areas of the portrait on the top of the head and buns. The reverse also shows clear doubling, especially at UNIT and around the wreath, but the rotation is significantly less on that side. I suspect this piece became a broekage maker somewhere in the process of being struck more than two times as that's the only way I can explain the visible differences in rotation between the strikes. Regardless, this is a really neat mint error and an attractive cent in spite of the contact marks described here Ex McCawley & Grellman Auctions/Goldberg's 9/14/08:466; Daniel W. Holmes, Jr.; McCawley & Grellman Auctions / Goldberg's 09/19/10:488.

301. 1830 N-4 R2 G4. Unique Late Die State. Several points sharper but lightly corroded, the roughness mostly hidden under a rather glossy dark steel and olive patina. The obverse is more reflective than the reverse, which is closer to matte. There are traces of shallow verdigris on the reverse, and the only significant marks are a shallow void from a planchet lamination at the left side of the U in UNITED with a smaller void at the top of that T. Extremely rare late die state, just prior to the terminal state of the obverse die. A raised retained eud connects the date to the rim below, with the right end of the eud raised much more than the left end. This is the only example known to us and the only one documented in the Noyes census. his grade net AG3 with photo #20972. Removed from an NCS slab graded VG details corroded (the NCS label is included, and it shows the attribution and Reiver provenance). Ex Thomas Warfield. Associated Coin Auctions 10/55:525-Willard C. Blaisdell 9/76-R. E. Naftzger, Jr. 1989 EAC Sale. lot 314-Dennis Mendelson. Superior 2/3/91:397-Jules Reiver. Heritage 1/24/06:19929-Chris McCawley 5/06; Daniel W. Holmes, Jr.; McCawley & Grellman Auctions / Goldberg's 05/30/10:314.



302. 1830 N-6 R4 VF25. Medium Letters Reverse. Recolored a mixture of golden brown, orange, maroon, and chocolate. Sharpness VF35 but there are some light scratches on each side, including a light "x" that crosses the entire obverse. The reverse is a little nicer, yet a tiny "x" scratch is plainly visible inside the upper wreath above ONE. MDS.



306. 1831 N-5 R4 F15. VF20+ with very pretty medium brown color with lighter highlights. Net F15 due to some light scratches and a couple of nicks on the obverse that are plainly visible to the naked eye. Slightly below average yet retaining nice eye appeal.



303. 1830 N-7 R3 VF20. EF40 details but struck on a very dark brown, finely granular planchet. The patina includes hints of dark green, while the high points of the coin are an unnatural salmon color. Marks include two tiny nicks between stars 3-4, another nick in the field before the forehead.

304. 1830 N-10 R4+ AG3. G5 sharpness with a host of minor problems. The entire coin is covered with a green patina; There is a strong rim nick at star 5, and some light scratches running parallel to the nose and forehead. The reverse also shows a pair of tiny nicks and a pair of tiny rim dents as well. E-MDS, with a faint reverse die crack above ATES.

305. 1830 N-11 R5 G5. F15 details but corroded with sandpaper surfaces on each side. The color is a brassy medium brown, and the obverse has what appears to be some black ink stains. The date is obscured by the rough surfaces, but can still be made out with some effort. Reverse die cracks.

307. 1831 N-5 R4 NGC VF Details Improperly Cleaned. NGC got this one mostly right, as the EAC grade is F15 net F12 for recoloring. The color is mostly dark steel brown with a little mixture of burnt orange, and the look is mostly natural. Tiny contact marks only, nothing out of line for the grade.



308. 1831 N-14 R4 F12. Pretty F12 with choice medium tan brown color. The obverse shows a tiny spot of black verdigris nestled at the back of the lower curls, and that same black is more prominent yet equally well nestled into the reverse crevices. Minor contact marks only, and a very good-looking example.

309. Group Lot, 2 Large Cents. 1831 N-14 R4 VF30 net F12 due to dark brown surfaces from light even granularity; and 1841 N-3 R2 VF35+ net VF20 for a cleaning, recoloring, and maybe even a light whizzing. Lot of 2 coins, each clearly below average.



310. 1832 N-3-1/2 R1 PCGS MS64BN. Large Letters. EAC grade MS63 net MS62 for a dull, well-hidden scuff on the coronet tip. Even now that I've told you, you might still have a hard time finding it. Light golden chestnut brown with satiny mint luster abounding from each side. Pronounced double-profile that is most obvious on the forehead and nose. Well-pedigreed: Parsons; Henry C. Hines; William H. Sheldon; Starr lot 268; CVM; March Wells.

311. Group Lot, 2 Middle Date Large Cents with Double Profiles. Each coin grades F15 and is nice for the grade, albeit with different colors. 1833 N-6 R1 dark brown with lighter highlights; and 1834 N-2 with evenly medium tan brown color.

312. 1834 N-5 R5 AG3. Large 8. Large Stars. Medium Letters – the RARE one! Smooth medium brown and nice for the grade. There are some insignificant scratches and a nick or two, but for an AG3, you can't expect much more. The only detraction is that the date and most of the stars are nearly worn smooth, although you can certainly make out enough to confirm the attribution. The reverse is notably stronger.



313. 1835 N-4 R4+ VG10. Much sharper, VF25 or better, but the entire coin is lightly corroded resulting in fine sandpaper surfaces. The surfaces are a little smoother on the obverse than the reverse, and the overall color is dark brown with nicely contrasting peanut butter highlights. Certainly below average but not horrible.



314. 1835 N-7 R1 EF40+. Glossy chestnut brown with nice eye appeal. LDS with a somewhat mushy look and a notable double profile. Surfaces are nearly mark-free, even with the aid of a strong glass.

315. 1835 N-10 R4+ VG10. Decent medium brown color, but with finely granular surfaces. Details are VF20 with sharp rims. The obverse is a little rougher than the reverse, with some scattered areas of slightly darker and heavier corrosion, especially on the cheek. Probably looks better than it sounds. E-MDS.

The 2013 EAC Convention Sale, May 4, 2013

316. 1835 N-10 R4+ AG3. Sharpness exceeds F12, but heavily corroded and heavily scratched, as well. Sorry, but this one fits the definition of "scudzy." MDS.



317. 1835 N-11 R4+ F15. EF40 details with essentially black surfaces that are finely granular and also hindered by several small patches of green corrosion. The most notable mark is a heavy rim dent in the lower right reverse. EDS.

318. 1835 N-11 R4+ G4. A couple points sharper, but recolored and lightly pitted. The color is very dark brown, with some areas of lighter brown on each side. MDS.

319. 1835 N-18 R4+ G4. Some minor nicks and rim bumps can be seen, plus some light patches of dark green verdigris along the left obverse rim. However, these are all minor and not unexpected for the grade, and the coin has a very pleasant look with pretty medium tan brown color.



320. 1835 N-19 R5 VG8. A couple points sharper with nice medium brown color and soft, smooth surfaces. The deduction takes the form of a half-dozen tiny digs around OF-A on the reverse. The date is faint yet still readable, and the overall look is pleasant.

321. 1836 N-6 R2 AG3. Glossy medium brown with VG8 details. A rare EDS specimen without the obverse rim break at stars 7-8 that is seen on most examples. There is a heavy rim dent at star 1, plus several heavy scratches on the reverse that result in the net grade.

322. 1836 N-7 R4 VG8. VF25+ with dark brown color and lighter high points. There are several notable dents on each side, including a scuff through the date and a dig in the hair bun on the obverse, plus several scrapes inside the wreath on the reverse. A rare LDS example with a heavy reverse rim break over D-STA.



323. 1837 N-3 R1 AU50. Pretty lustrous medium chestnut brown with nice eye appeal. There is a faint streak of carbon extending from the top of the hair to the rim above, plus a tiny spot of green corrosion beneath ON on the reverse. Finally, an as-struck obverse low spot can be seen on the neck. AU55 net AU50 and a very nice looking example.



326. 1838 N-10 R1 NGC AU58BN. EAC grade AU50 with very attractive medium brown color with soft, lustrous surfaces. The obverse has a half-dozen spots of slightly darker toning, but there are no marks to speak of. Kudos to NGC – they got this one mostly right.



327. 1838 N-14 R4 NGC MS62BN. EAC AU55 net AU50+ with clear spots of wear on the hair above the brow. There is a shallow lamination that runs from star 1 through the bust tip and into the lower curls. Medium brown with some lighter highlights on each side, and the surfaces retain some luster. EDS.



328. 1838 N-15 R5-VG7. F15 but cleaned and recolored, and with some shallow planchet voids in front of the portrait. The color is not close to natural yet – it's not bright, it's just not right, either. That being said, the coin looks decent in hand.

324. 1837 N-15 R3 NGC MS64BN. EAC grade AU50, with no real trace of mint luster. The color is a nice and even medium peanut butter brown, with perhaps a trace of red showing through on the reverse. M-LDS with heavy reverse die cracks. An excellent candidate for a discussion regarding EAC grades versus slab grades. Ex-C.E. Bullowa 11/18/02 lot 23.

325. Group Lot, 3 Large Cents including 2 Overdates. 1837 N-17 R4 attractive tan brown F12 net VG10; 1844/81 N-2 R2 Overdate F15 with a light scratch rim to nose; and 1851/81 N-3 R1 original tan brown VF25. Lot of 3 coins.

329. 1838 N-16 R5- G4. Details are close to VG8, but the obverse peripherals including the date are mostly gone. The color is a nice light tan brown, although the glossy surfaces suggest an ancient yet now meaningless cleaning. Nct G4, but just barely makes that grade.



330. 1838 Large Cent with Delaminated Obverse G5. Unattributed, and the obscured obverse would make it a fool's errand. The obverse is mushy and also grossly delaminated, with two streaks of raised metal, one above the date and the other running down from star 6 into the portrait. Hard for me to describe, other than to say I have never seen one like it!



331. 1839/6 N1 R3+ F12. Medium chocolate brown with sharp F15 details. There are some very light and shallow scratches on the neck, plus a tiny, bright scuff on the reverse at T in TES. MDS, with only the left side of the obverse die crack plainly visible



332. 1839 N-11 R1 NGC MS63BN. EAC grade better than AU50, with soft medium tan brown surfaces that still exhibit some mint luster. There is a light dusting of black verdigris on the lower curls, plus some more obvious tiny rim nicks at the bottom of the reverse. AU50 net EF45 by EAC standards. E-MDS.

333. 1839 N-12 R4 G6. Sharpness VG8 with nice tan brown color. The obverse is weakly struck around the borders, plus there is a notable chip at the top of the hair. A fine layer of green toning can be found along the left obverse rim, and again on the reverse above NE in ONE. MDS with a faint die crack visible from star 4 to the nose. Very decent for the grade despite the harsh-sounding description.



334. 1839 N-14 R3 VF30. VF35+, close to EF40, with very dark brown, glossy surfaces. There are too many tiny nicks for the sharpness grade, plus a fine scratch through the date and another above ONE on the reverse. Sounds like a lot but really the defects are all easily forgivable and they amount to just 5 points off the sharpness grade. M-LDS

335. 1839 N-15 R6- AG3. G6 details but damaged in almost every way possible, including an old cleaning, heavy scratches, hammered rims, and maybe even a slight bend. All details remain fully visible despite the defects. The famous “ugly but rare” combination. But what are you gonna do, it’s an R6-!



336. Counterstamped Braided Hair Large Cent, Undated. The host planchet is a braided hair large cent with Petite Head and Small Letters reverse. The counterstamp features an eagle on the obverse, while the reverse reads “IOU One Half A Cent 1866.” The stamp was struck from crude, handmade dies, and it covers about half of each side of the host coin. The host planchet grades VG-F with medium brown color and minor roughness; the counterstamp grades perhaps EF. Quite a unique item.

337. Group Lot, 5 Braided Hair Large Cents. This group contains 5 nice examples of early 1840’s braided hair large cents, including: 1840 N1 VF20; 1840 N12 VF30; 1841 N6 VF35; 1842 N2 VF30; and 1843 N12 VF25. Lot of 5 coins, each nice for the grade.

338. Group Lot, 10 Braided Hair Large Cents. Another group of nice coins, this one including 10 different examples with dates from 1840-1846, and grades ranging from VG8-F15. Lot of 10 coins, each nice smooth brown.

339. 1840 N-3 R1 VF35. Small Date. Five points sharper with nice medium brown color and attractive surfaces. There are some light circulation marks, the only notable one being a moderate chip on the reverse rim at K7. The look of a commercial AU. MDS, state (b).

340. Group Lot, 3 Coins. A mixed lot of three coins with nice color, including: 1840 N10 large cent, VF35 net VF20 for light corrosion and scratches; an 1848 N-23 large cent VF25, E-MDS state (b); and an 1837 Hard Times Token, EF40 net F15 for heavy scratches. Lot of 3 coins.



341. 1841 N-6 R1 EF45. An attractive mixture of medium brown with lighter golden brown highlights. Only inconsequential marks as expected for the grade. MDS, state (b).



342. 1842 N-4 R2 VF35. EF45 details with glossy medium brown surfaces and just a trace of wear. Ten-point deduction for a significant pit on the reverse beneath EN of CENT. MDS, state (b).

343. 1842 N-5 R3 VF35+. Faces up as a pretty EF-AU with underlying luster and strong details. However, both sides have several scattered areas of faint green verdigris. A little below average but still nice-looking. LDS, state (b).

344. 1843 N-17 R5+ F12. Mature Head. Slightly sharper but there are a couple small digs at star 7. Otherwise the surfaces are smooth and attractive with only minor contact marks consistent with the grade. Glossy light chocolate and steel brown. The attribution points are clear. Ex Henry T. Hettger 11/04-Phyllis Thompson; Goldberg’s 05/31/10, 517.

345. Group Lot, 4 Braided Hair Large Cents. A nice grouping of 4 tougher varieties, including: 1843 N-16 R4 VF20 net F12; 1847 N-23 R5 VF20 net F12; 1847/7 N-31 R5 F15; and 1848 N-6 R2 VF25 net VF20, EDS state (a) ex-RSB III lot 512. Lot of 4 coins.



346. 1844 N-1 R1 EF45+. Very attractive, glossy medium tan brown with nice eye appeal. AU50+ with some minor nicks only, and the eye appeal is very positive. MDS, state (c), with some tiny obverse rim breaks beneath the date to star 13.



347. 1845 N-3 R4 NGC graded MS65BN. Frosty bluish steel and light olive with at least 5% of the mint red remaining. Sharply struck and attractive, but the luster is subdued somewhat by a very thin layer of natural oxidation. The only marks are a small spot of darker toning nestled between star 4 and the dentils to the left and dull rim nicks at the R and C in AMERICA. Sharply struck EDS, die state a, before any die cracks or rim cuds. Our grade is MS60 net AU58+ for the two small rim nicks. The attribution is noted on the NGC label. Ex Tony Terranova, McCawley & Grellman Auctions 8/17/1996:443-R. S. Brown, Jr., McCawley & Grellman Auctions/Superior 6/2/2002:193; McCawley & Grellman Auctions / Goldberg's 09/02/12 lot 724.



348. 1845 N-7 R5 PCGS VF25. EAC grade VF20 with no real defects, but with flat, medium brown surfaces. Aside from the proof-only N14, this is the rarest variety for 1845.



349. 1845 N-15 R4+ VF35+. Pretty medium brown with a dusting of green within the crevices. MDS, state (b), and yet another rare variety for 1845.



350. 1846 Contemporary Counterfeit VG7. An exceptionally rare piece with about a dozen examples known. This is the lightest seen, weighing just 115.6 grains on a 27.0 mm planchet. VG7 with medium brown color. The reverse is rotated 105 degrees clockwise. Refer to Goldberg's / Dan Holmes IV 01/30/11 lot 175 for more detailed information on these rare counterfeits.



351. 1846 N-3 R2 MS60+. Small Date. A gorgeous mint state example with golden, sea green color and semi-reflective surfaces. This is the terminal die state, state (h), with shallow reverse rim breaks at TATES-OF-A, M, and this example is CC2 for the TDS. Flatly struck with no star centers and some weakness at the coronet tip. Naturally a well-pedigreed example that includes: Wittlin; Willard C. Blaisdell 09/76; R.E. Naftzger, Jr. via William C. Noyes; Daniel W. Holmes, Jr.. Make sure you look at this beauty!

352. 1846 N-6 R1 NGC MS66BN. Small Date. Another visually impressive 1846, this one with a different look than the 1846 N-3 above. Medium brown with frosty mint luster on each side and some mint red showing through on the reverse. A tiny nick right of the mouth is the best identifying mark. EAC grade MS63 and tied for CC5. Ex-Wyatt, Superior 09/30/85:924; Wes A. Rasmussen:101; Martin Paul, M-LDS, state (c).



353. 1846 N-16 R5- VF20+. Tall Date. An attractive example with medium brown color and some darker toning around the devices. Late die state (c) with an obverse rim break cud above stars 10-11, and this example is CC6 of 18 pieces in this die state.

354. Group Lot, 2 Braided Hair Large Cents. 1846 N-18 EF45 net VF30, EDS (a) and 1849 N-4, E-MDS (b), AU50 net EF40. Lot of 2 coins.

355. Group Lot, 4 Braided Hair Large Cents. Lot of 4 coins grading F15-VF25, including: 1846 small date, 1846 large date, 1847, and 1848. Each coin is attractive. Lot of 4 coins.

356. 1847/7 N-2 R3 F12. 7 Over Small 7 Overdate. A nice, original example with only minor contact marks. E-MDS, state (a), and the overdate feature is clear to the naked eye.

357. Group Lot, Two 1847 Large Cents. Lot of 2 rare early die state examples, including N-4 state (a) F15+ net F12+, and N-12 state (a) VF20 net F12.



358. 1847 N-5 R3+ PCGS EF45. A pretty example with mottled medium brown color. Sharpness EF40 net VF35 due to four scattered, dull nicks on the obverse, including a pair on the jaw. LDS (b).



359. 1847 N-7 R2+ VF20. Sharpness 5 points higher with some random tiny nicks, most notable beneath the eye. M-LDS state (b). Very dark chocolate brown, matte surfaces.



360. 1847 N-7 R2+ VF25. Sharpness AU50 but with dark, nearly black, finely granular surfaces with some scattered areas of light corrosion. Late die state (e) with 4 obverse rim breaks; this example is tied for CC7 for the die state. Ex-RSB III lot 368.



361. 1847 N-8 R3 VF35+. Sharpness of EF45, but cleaned and recolored, and noticeably bent. The recoloring is well-done and the coin is attractive with glossy golden brown surfaces, but the bend is noticeable to the naked eye, and even more noticeable when the coin is laid flat. EDS, state (a).



362. 1847 N-10 R3 EF40. Glossy golden brown with sharp details and the look of a commercial AU. Sharpness EF45 net EF40 for some tiny contact marks and rim nicks, none notable, but enough to knock 5 points from the sharpness grade. MDS.



365. 1847 N-24 R1 VF35. Attractive, original color with sharp EF40 details but no remaining luster. 5-point deduction for some minor nicks on the obverse, but the overall look is pleasing. EDS.



363. 1847 N-10 R3 VF30. Attractive mottled medium brown and tan color, possibly recolored but well-done if so. Early die state; minor contact marks only; nice eye appeal.



366. 1847 N-26 R3+ F12. Several points sharper but there are very tiny nicks scattered about the obverse and some digs in the E in CENT. Rather glossy reddish steel brown and chocolate. Late die state, state (f), with clear rim cud breaks at OF-A and above the E in STATES. This is Newcomb's old #17 late. Tied for CC#4 of only 8 known with the two cuds. Ex J. R. Grellman-R. S. Brown, Jr., McCawley & Grellman Auctions/Superior 6/2/2002:433-Jim Roecker, McCawley & Grellman Auctions/Goldberg's 2/11/07:838; Daniel W. Holmes, Jr.; McCawley & Grellman Auctions / Goldberg's 01/30/11:226.



364. 1847 N-11 R4 VF35+. EF45+ and nicely recolored a medium, glossy chocolate brown. There is a scuff in front of the nose that reveals some brighter copper underneath, plus there is a spot of dark carbon in that same area. My guess is that somebody tried to scrape off the carbon and simply scraped off the recoloring instead. MDS, state (a).

367. 1847/7 N-31 R5 F15. 7 Over Small 7 Overdate. Sharpness VF30 but the surfaces are very dark, matte brown. No other defects, and the 1847/7 overdate feature is clear. LDS, state (d).

368. 1847 N-34 R5+ VG7. An E-MDS example, state (b), with reverse uncracked. Medium brown color with some lighter highlights on the obverse. A tiny streak of green verdigris on the reverse between S-O is the only notable defect, and it is quite easy to overlook.



369. 1847 N-36 R5+ VG8+. An original medium tan example with some dirt in the crevices, plus some very light scratches on each side. MDS.



370. 1847 N-39 R3 EF40. A nice original EF45 with some remaining gloss to the surfaces and very nice eye appeal. Medium tan brown color, with just a few tiny nicks. Late die state (b).



371. 1847 N-41 R4- VF30. Slightly sharper with too many small nicks on the obverse for the sharpness grade, plus a small carbon spot near the dentils right of star 7. Glossy chocolate and steel brown. Very scarce EDS, state (a). A sharp die line joins the bases of the U & N in UNITED. Far removed from the condition census for the variety but second finest of the earliest die state. Ex Wes Rasmussen 5/20/89-Dick Punchard 11/9/89; Daniel W. Holmes, Jr.; McCawley & Grellman Auctions / Goldberg's 01/30/11-253.

372. 1848 N-4 R4+ VF30. Very dark chocolate brown with only minor contact marks, none of which are notable. EDS, state (a), with bold repunching clearly visible inside the 4.

373. 1848 N-13 R4 F12. Dark brown and black with VF30 details but corroded, lightly on the obverse but much heavier on the reverse. There is also a notable rim scuff at K5 obverse. Late die state (b) with a clear reverse rim break above TES.



374. 1848 N-21 R3- MS63. A pretty mint state example with 20% mint red and light brown color overall. The only notable mark is a dull scuff well-hidden in the leaves on the reverse just left of ONE CENT. Tied for CC3 for the variety, and well-pedigreed: Newcomb; Starr; Stacks 06/84:577. E-MDS, state (b).

The 2013 EAC Convention Sale, May 4, 2013

375. 1848 N-26 R5- F12. Original medium brown with some light patina building up on the surfaces. MDS, state (b), with only inconsequential marks.



376. 1848 N-28 R1 AU50. AU55 and a very pretty, glossy medium tan brown color. Just a trace of wear, with an average strike showing most star centers. Some areas of darker carbon toning on the reverse attest to the coin's originality. EDS, state (a).

377. 1848 N-32 R5 VG8+. Medium golden brown, and a couple points sharper. There is a small area of red patina in the lower left corner of the reverse that results in the net grade. MDS; Ex-Superior 02/07:229.

378. 1848 N-32 R5 G6. Nice light tan brown color and a point sharper, with just a few too many light contact marks, including some light scratches at the nose. Pretty nice for a low grade example. EDS.

379. 1848 N-32 R5 G6. Sharpness VG7 with a dull but notable dent in front of the forehead, plus some lighter contact marks on each side. Medium brown, original surfaces. MDS.

380. 1848 N-33 R5- F12. Medium tan brown with glossy surfaces. There is some darker toning scattered across the obverse, some minor red patina along the rims on the left side of the reverse, plus a notable rim bump above OF. EAC grade F15+ net F12; MDS.

381. 1848 N-34 R5- F15. Very dark chocolate brown with lighter brown high points. Sharpness VF25 with VERY light corrosion, quite difficult to locate actually, and the eye appeal is still nice. Pedigreed back to the Gary Ruttenberg sale, 08/17/96 lot #488. EDS.



382. 1848 N-37 R4+ VF30+. Sharpness VF35, close to EF40, with very pretty medium tan brown color. Minor nicks account for the net grade, and the strongest of these is at the junction of the neck and jaw on the obverse. EDS. Original and attractive.



383. 1848 N-41 R1 NGC MS66RB. EAC grade MS64 with more than 50% red. Tied for CC2 for the variety, and quite a lot of mint red on both sides for this date. Marks are difficult to locate, so the best identifying feature is a tiny spot of darker toning above O in ONE on the reverse. E-MDS, state (b).



384. 1848 N-42 R5 VG10. Sharpness F15 but way too many nicks and scratches for the grade, and the coin has been recolored. The color looks “right,” although it is not original, but the nicks and scratches are a distraction. EDS.



389. 1850 N-12 R1 AU50. Glossy tan brown, with the look of a commercial UNC. Sharpness AU58 but with some light areas of black pitting on each side, slightly stronger on the obverse. Removed from an NCS “UNC Details, E D” holder. EDS.

385. Group Lot, 3 Braided Hair Large Cents. Three different dates, including: 1848 N-24 VF35 net VF25 recolored; 1851 N-33 VF30+ net VF25, dark with reverse dig; and 1852 N-4 VF35, softly struck choice tan brown. Lot of 3 coins.



390. 1850 N-18 R3 EF40. AU50 sharpness with a fine layer of red corrosion on each side, plus some light nicks and a scratch on the portrait. The color is an even mixture of glossy medium brown and red. Well-struck with all star centers clear. Slight doubling on the reverse from a chatter strike, most notable along the right side of the wreath on the reverse. EDS.

386. Group Lot, 7 Large Cents, All Dated 1848. Group lot of 7 large cents, all dating 1848, with grades ranging from F15-VF25. A slightly below average group, with some coins recolored and others dark. Lot of 7 coins.

387. Group Lot, 2 Large Cents Dated 1849. 1849 N-8, EF40+ net VF30 nice glossy tan brown with too many tiny nicks, M-LDS, state (c); and 1849 N-22, EF45 net VF35 for old cleaning and some rim bumps, EDS state (a). Both remain attractive. Lot of 2 coins.



388. 1849 N-27 R4 VF25. Original medium brown. Perhaps a few points sharper but with some light contact marks and rim nicks on each side. MDS, state (b).



391. 1850 N-24 R4+ F12. Original medium tan brown with some streaks of darker carbon on the reverse. Sharpness F15 but there are some notable scratches on the obverse, the strongest of which are directly in front of the portrait.



392. 1850 N-27 R4 VF35. Light-medium tan brown with glossy surfaces from an old cleaning. The coin is mostly natural now, but retains a faint blue sheen plus a few tiny areas on the obverse that show brighter highpoints. EF40 sharpness; MDS.



395. 1851 N-13 R1 EF40. Pretty soft medium tan brown, with glossy surfaces. EF45 sharpness with a picky 5-point deduction for lightly abraded rims that are slightly brighter than the rest of the coin. Late die state (d) with a mushy yet attractive look.



393. 1850 N-27 R4 VF30. Pretty medium tan brown with glossy surfaces and very even obverse color. The reverse is equally nice tan brown, but does show some areas of light red patina. Nice looking for the grade. MDS. Ex-Superior 02/99 lot 2375.



396. 1851 N-17 R2 EF45+. Another soft, lustrous example with nice medium tan brown color and glossy surfaces. Sharpness AU50 with some very minor carbon on the obverse. Late die state (d) with mushy rims yet a very attractive overall look.



394. 1851 N-12 R1 EF40. Very early die state with the fine die lines bold to the naked eye, and virtually choice for the grade. Original medium brown color, and certainly a commercial AU. The best identifying mark is a tiny rim nick on the reverse above F-A.



397. 1851 N-12 R1 EF40. Sharpness AU50 but recolored a mottled mixture of dark peanut butter and chocolate. Not unattractive, but not original, either. Additionally, there is a tiny spot of dark corrosion behind the lower curls. E-MDS, state (b).



398. 1851 N-19 R3 PCGS MS63BN CAC. EAC AU58 with just a trace of wear. Glossy medium brown with a tiny buildup of black in the reverse crevices. There are a couple of very faint scratches on the obverse, the most notable one being directly above the hair. Late die state (e) with a plainly visible obverse die crack that starts out strong at star 4, crosses the portrait, and finishes weakly at star 9. In a PCGS holder graded MS63BN, with a green CAC sticker.

399. 1851 N-35 R5+ VG10. Sharpness better than F12 but still bright from an old cleaning. Additionally, there is a dull dent at the top of the hair and a rim dent at star 4 obverse. Light brown color with orange highlights from the cleaning.

400. 1851 N-38 R1 EF45. AU50 sharpness with light golden brown color and glossy surfaces. The recoloring is subpar, with the color now a splotchy mixture of golden brown and mottled orange. Plus there is a spot of red and green corrosion at the left ribbon end on the reverse. Despite the description, the coin still looks decent. LDS, (b).



401. 1851 N-40 R5 VG10+. Sharpness F12 with a dull nick on the chin, plus some tiny yet notable rim nicks on the reverse. Mottled medium brown color. Ex-Superior 02/07:259.

402. 1851 N-41 R4 VF35. Medium brown color with sharp hair details. There are some tiny nicks here and there, plus a small depression on the neck as-struck, but nothing strong enough to reduce the sharpness grade. The look of a commercial EF. MDS, state (b).



403. 1851 N-45 R4 VF30. The obverse is an even medium brown and choice; the reverse has a slightly unnatural golden brassy color about it, possibly from the removal of some black dirt which can still be seen in the crevices. No other defects to speak of. M-LDS, state (b) early.

404. Group Lot, 2 1851 Large Cents. Lot of 2 1851 large cents, including: 1851 N-17 R2 EF45 net VF35 for recoloring and rim bumps, MDS (b); and 1851 N-38 R1 EF40 net VF35 nice tan with light scratches, LDS (b). Lot of 2 coins.



405. 1852 N-1 R1 MS60. Mostly medium brown with darker brown mottled toning. About 5% mint red remains visible on each side. A mushy late die state example, state (d), which is Newcomb's old N-2. No contact marks to speak of.



406. 1852 N-3 R1 PCGS MS63BN OGH. EAC AU58+ with perfectly even medium tan brown color. The surfaces are best described as glossy, but with a minimum of mint luster remaining. No defects to speak of aside from a couple of carbon spots on the obverse and a similar carbon streak on the reverse. MDS, (b).

407. 1852 N-22 R1 EF40. Sharpness AU50, but the coin has been whizzed and recolored. The reverse looks slightly more natural than the obverse, but the entire coin looks “wrong.” Might pass on eBay, but not to an EAC member. MDS, state (b).

408. Group Lot, 7 Braided Hair Large Cents. A nice lot of 7 different examples. Dates range from 1852 – 1856, and grades range from VF20 – VF35, with an overall average of VF30. Lot of 7 coins.



409. 1853 N-3 R1 MS60. Glossy medium chestnut brown with sea green overtones on the obverse and a hint of mint red on the reverse. There is an as-struck, minor rim disturbance to the right of the date, otherwise there are no marks to speak of. E-MDS, state (a+).

410. Group Lot, 2 Braided Hair Large Cents. 1853 N-3 VF20 LDS (c) and 1856 N-12 VF30, each coin an original medium brown with minor nicks.



411. 1853 N-10 R1 EF40+. Soft medium tan brown with very faintly granular surfaces under a strong glass. Late die state (c), with very flatly-struck lower hair curls. No marks to speak of, and the overall details are 5 points sharper.



412. 1853 N-12 R1 EF45. Very pretty medium tan brown with glossy surfaces and nice eye appeal. Sharpness 5-points higher but there are some very faint scratches on the cheek that are only visible with a strong glass. MDS, state (b).

413. Group Lot, 3 Braided Hair Large Cents, VF35. 1853 N-12 MDS (b); 1855 N-13 LDS (b); and 1856 N-13 MDS (c). All three coins have original surfaces and color, and grade VF35. Lot of 3 coins.



414. 1853 N-14 R3 EF40. Glossy medium brown with darker chocolate toning around the devices. MDS (c) with a thin yet plainly visible obverse rim break cud above stars 11-13. Ex-Superior 09.05.580



415. **1853 N-15 R2 NGC MS61BN.** EAC grade AU55 with traces of faded mint red on both sides. Otherwise the color is a medium brown with some tiny carbon spots on each side. No contact marks to speak of, yet I note a tiny rim disturbance as-struck above star 13. E-MDS, state (b) early.

416. **1853 N-16 R1 VF35.** Very pretty medium tan brown with glossy surfaces and the look of a commercial AU. Sharpness at least EF40 but there are some tiny contact marks, mostly on the obverse, including a notable nick on the neck. MDS, state (b).

417. **Group Lot, 2 Large Cents Dated 1853.** Lot of two 1853 large cents, including N-19 VF35 net VF30 with nice dark brown color, E-MDS (a+); and N-25, VF30+ net VF25 recolored, MDS (b).

418. **1853 N-21 R4 VF30.** Medium brown color with no defects to speak of. Late die state (b) with mushy rims and a pronounced lump on the reverse between ONE CENT. Think 1855 Knob on Ear and you will have it!



419. **1853 N-30 R2 EF40.** A very pretty mixture of light and medium brown with glossy surfaces. Minor nicks only, with nice eye appeal. MDS, state (b)



420. **1853 N-31 R4+ VF30.** Very pretty medium tan brown, and sharpness at least VF35. There is a light scratch and a spot of dark carbon at the top of the hair that accounts for the net grade. MDS, state (b), and an attractive example.



421. **1854 N-8 R1 MS60.** MS63 with at least 20% mint red on both sides. The sharpness grade is limited by a single tiny spot of green corrosion on each side, the most notable one beneath the 5 in the date. E-MDS, state (a) late, and very attractive.



422. **1854 N-10 R2 EF45+.** Lightly cleaned and recolored and the medium brown color is now attractive yet unnatural. Sharpness at least AU50 with no other defects. Late die state (e) with several light obverse die cracks plainly visible to the naked eye.



423. 1854 N-11 R2 VF35+. Sharpness virtually EF40 with aspirations of becoming a commercial AU. Gorgeous medium tan brown color with a tiny spot of red verdigris just to the left of the C in CENT on the reverse. M-LDS, state (c) early.



425. 1854 N-21 R2 EF45+. Glossy medium brown color, certainly an AU by commercial standards. No real defects to speak of, and very nice eye appeal. MDS, state (b).



426. 1854 N-29 R3 ANACS EF45. Mis-attributed by ANACS as N-26 in an old, small white holder. EAC EF40 net VF35 for some minor contact marks and a rim nick. Medium brown color with matte surfaces that show minor debris within the reverse crevices.



424. 1854 N-18 R3+ MS60. A sharply struck mint state example that was lightly dipped long ago, now a rather lustrous and attractive slightly faded red. Satiny mint frost covers the reverse. The only marks are a few small splashes of dark toning under star 9 and a smaller one over star 3. M-LDS, die state e. The die clash marks on both sides are dull but visible and the fine lines at the E in ONE are gone. Called AU50 by Noyes, his photo #55155. Our grade is MS60, tied for CC#8 in the Grellman census. Ex Hollinbeck Kagin auction 11/15/46, lot # not recorded; R.E. Naftzger, Jr.; McCawley & Grellman Auctions / Goldberg's 09/07/09:1212.



427. 1855 N-4 R1 AU58. Glossy chestnut brown AU58 with just a trace of wear. The diagnostic pair of tiny lumps on the cheek are plainly visible, but there are no other marks to speak of. EDS.



428. 1855 N-5 R5- EF45+. Glossy light chestnut brown with an argument for AU50. No major contact marks, but I do note a trio of tiny carbon spots on the lower obverse, including one on the rim at K5. E-MDS, (a). Should be tied at CC6 with several others.



431. 1856 N-6 R1 AU55. Mint State sharpness but with some notable marks and faint scratches in front of the neck. The color is an attractive medium brown with a hint of mint red on the reverse and a stronger suggestion of red on the reverse. Additionally, there is a streak of darker toning along the obverse rim from K7-K9. EDS.



429. 1855 N-5 R5- VF30. Yet another example of this tough variety, this one grading EF45 net VF30 due to several notable rim nicks and a recoloring done by sulfur. MDS (b), and although not an original coin, not an ugly coin, either. In fact, it looks quite decent! Ex-Tom Reynolds as EF40 net VF30.



432. 1856 N-6 R1 EF45. Very glossy medium tan with a layer of CARE or Blue Ribbon on the surfaces. Yet another late date that looks like a commercial AU, and that look is very positive. The surfaces are mark-free, but I note a light dusting of green corrosion encircling star 11. MDS, state (b).



430. 1856 N-4 R3 EF40+. Medium chocolate brown with red undertones. EF45 sharpness but lightly cleaned and recolored. The surfaces are mostly free of marks, but there is a notable mark on top of the obverse rim at K1. EDS, state (a).



433. 1856 N-8 R4- VF35. Sharpness EF40 but too many tiny contact marks, none notable just too many of them. Original medium brown color. EDS.



434. 1856 N-10 R1 EF45. Choice medium tan brown color, and another coin that qualifies as a commercial AU. M-LDS, state (c) early, with no defects to speak of. What appears to be an obverse rim break at stars 5-6 is actually a foldover lamination.



437. 1856 N-16 R2+ VF35. Sharpness 5 points higher, but there are several tiny nicks on the obverse and some tiny rim dents on the reverse. Glossy medium brown with some darker toning within the reverse devices. M-LDS, state (b) late.



435. 1856 N-10 R1 EF45. Glossy medium tan brown color – how many times can I say “commercial AU” in one catalog? Pretty surfaces with just a few TINY spots of green corrosion that you have to hunt for on each side – the most notable spot is on the reverse above the F in OF. M-LDS, state (c).



438. 1856 N-17 R2 EF40+. Glossy medium brown with just a couple of tiny, insignificant contact marks on the chin and neck. Removed from an NGC AU58 holder, and the NGC label remains with the coin. EDS.



436. 1856 N-14 R1 PCGS MS63BN. Medium tan brown color, but lacking much evidence of mint luster on either side. EAC grade AU58, with the only defects being a tiny spot of green verdigris beneath star 8, and a similar dusting of green above the C in AMERICA on the reverse. MDS, state (b).



439. 1856 N-17 R2 EF40+. Sharpness at least 5 points higher, but there is some minor verdigris on the reverse, and the coin has been recolored a mixture of dark brown and maroon. No other defects to speak of. EDS.



440. 1856 N-20 R3+ VF35. Glossy medium tan brown with strong details and nice eye appeal. Examination with a strong glass reveals some minor areas of black or green verdigris on each side, but you have to really hunt for those tiny spots. E-MDS, state (b).



442. 1857 N-4 R1 EF40. Small Date. Sharpness 5 points higher, but there is some black patina covering much of the obverse. Hate to call it corrosion, but it's what the grading services typically label as "Environmental Damage." Fortunately, the reverse is much nicer, and both sides are essentially mark-free. EDS.



441. 1857 N-1 R1 PCGS MS62BN OGH. Large Date. Glossy medium brown with a trio of tiny nicks on the chin and neck, plus a tiny nick on the O in ONE on the reverse. While the surfaces retain some gloss, there is no mint luster. EAC grade AU55. LDS



443. 1857 N-4 R1 VF35. Small Date. Original and attractive medium brown color with some darker carbon buildup on the reverse. A single nick in front of the chin and a tiny rim dent above star are the only notable marks. LDS, state (c).

444. **Donated Lot - All Proceeds to EAC. Hardbound EAC Catalog.** Special hardbound copy of the 2013 EAC Sale Catalog, one of 5 in leather, signed and numbered. **DONATED LOT - ALL PROCEEDS TO EAC!**

The End

TERMS OF SALE

1. This is a private sale. Participation is by invitation only and is limited to members of The Early American Coppers Club or invited guests. The auctioneer reserves the right to refuse to honor any bid which, at his sole discretion, he feels is not submitted in good faith. The auctioneer may withdraw any lot, without prior notice, for any reason whatsoever.
2. The highest bidder acknowledged by the auctioneer shall be the buyer. In case of dispute the auctioneer may at his sole discretion reopen a lot. In all cases the auctioneer's decision shall be final and binding on bidders.
3. All sales are payable in U.S. funds immediately upon receipt of invoice unless other arrangements have been made prior to the sale. Lots delivered in state of sale are subject to all applicable state and local taxes unless appropriate permits are on file with us.
4. Postage will be added to the invoice of all successful mail bidders.
5. A 10% buyers fee will be added to all invoices.
6. Please keep in mind this is not an approval sale. All sales are considered final. Sales to the floor may not be returned for any reason save authenticity. Sales to mail bidders are final unless lot proves to have been mis-described.
7. Lots will be available for viewing at the 2013 EAC Convention in Newark, OH, or by appointment.
8. Mail bids or phone bids will be accepted up through the day of the sale. All bids will be reduced. Lots will open at one increment above second highest mail bidder. Bidding will proceed as competition dictates with the lot either selling to the floor or to the mail bidder at one increment above the second highest bid.
9. Consignor may bid or place a reserve bid on their own coins. Any coins repurchased by a consignor will be announced as a pass. Principals of the auction firm may consign or may bid on coins in the sale.

MAIL BIDS

Please mail all bids to:

M & G Auction

P.O. Box 5250

Frisco, TX 75035

Phone 972-668-1575

or Fax to Chris McCawley 214-618-4592

Notes



1797 NC-3



1829 N-9



1798 S-166



1832 N-3-1/2



1801 S-213



1846 N-3



1804 S-266c



1846 N-6



1808 S-278



1848 N-21



1816 N-7



1848 N-41



Copyright © 2013



P.O. Box 5250
Frisco, TX 75035
972-668-1575