



**THE 2015 EAC
CONVENTION SALE
MAY 2, 2015**

Chris McCawley ~ Shawn Yancey

present the

2015 EAC Sale

May 2, 2015, 7:30 p.m.

cataloging by

Kevin Vinton & Travis Hollon

at the

Sheraton Grand Hotel DFW

4440 West John Carpenter Fwy. Irving, Texas

Welcome to the 2015 EAC Sale.

This is my fifteenth year of involvement with the EAC Sale. I, Bob Grellman and Shawn Yancey want to thank all EAC members for their support over the years in this endeavor. WE THINK IT HAS BEEN A PRETTY GOOD RUN. We have raised over 250,000 dollars through these auction sales with 100% of the net proceeds going to the club. This is the first year we have moved to a 15% buyer's fee for the EAC sale. So, take that into consideration in your bidding. But remember all the proceeds go to benefit the club. And there are some great coins in this year's sale. So bid early and bid often. This year you will notice we have added the cataloging efforts of Kevin Vinton and Travis Hollon. The photography was handled by Lucas Baldrige. Expect a greater participation by these "young ones" in the future.

Mail bids should be directed to Chris's address: P.O. Box 6400, Austin, TX 78762. Email bids can be directed to cmccawley@aol.com up through 12 p.m. the day of the sale. Fax bids can be received at the hotel 972-929-4885.

This year's sale will be held Saturday night May 2 at 7:30 p.m. at the Sheraton Grand Hotel in Irving, Texas.

Lot viewing will be held at the Early American Coppers Club Convention April 30 - May 2 on the bourse floor. We welcome your participation whether in person, by mail, by fax bid or by email. Please feel free to call Chris McCawley (972-668-1575) to discuss any lot in the sale.

This is a private sale, you must be a member of EAC to bid - please read our terms of sale before bidding. Please note there is a 15% buyers fee added to every invoice.

COLONIALS



1. 1787 NEW JERSEY M30-L VF20+ Slightly sharper deep chocolate. A short scrape under NO of NOVA. Very well struck for this variety.



2. 1787 FUGIO N-7-T EF40 Medium chocolate. Very sharply struck. A planchet void K7 obverse and another on the reverse. All legends and date sharp. A great representative example of the type. Scarce as a Non NY Bank Hoard variety.



3. 1794 BIRMINGHAM/KEMPSNONS PROOFLIKE 64 Brilliant mint red and tan "Bluecoat Charity School" Want a nice uncirculated 1794?



4. 1794 TALBOT ALLUM & LEE TOKEN VF20 Chocolate brown with hard, smooth surfaces. A small obverse carbon spot and a couple lamination voids as made.



5. 1790 MIDDLESEX/SPENCE MS65 A lounging shepherd appears to bear a 1790 date. A consuming bonfire "the end of oppression". DH 825.



6. MIDDLESEX/SPENCE AU55 "pigs meat". A pig tramples the symbols of authority: a pope's mitre and a king's crown. Modestly inscribed "Thomas Spence, Thomas More, Thomas Paine".



7. 1795 MIDDLESEX/SPENCE MS65 Brilliant bluish steel, mint red, and brown. A double dated token "British Liberty displayed" dated 1795. "A freeborn Englishman" dated 1796. A beautiful 18th century token in prooflike condition. DH730.



8. 1796 MIDDLESEX/SPENCER MS6 Lustrous light chocolate brown. "Libertas" with Liberty Cap on Pole. DH728.

HALF CENTS



9. 1794 C-5a R4+ EAC VG7 M2.0 very rare die state with strong obverse clash; 99.2 grains; RLF35
"Rather glossy olive brown with lighter chocolate brown toning covering the devices. The two-tone appearance accents the details and adds to the eye appeal which is excellent for the grade in spite of extremely fine roughness that covers the fields and protected areas. No marks or verdigris. The date and legends are complete and clear. Late Manley state 2.0 with strong die clash. Marks at the throat and neck. This piece is the only one mentioned by Manley for the die State." Weight 99.7 grains. Ex. Ray D. Munde-Roger S. Cohen Jr, Superior 2/2/1992:27-Davy II-Missouri Cabinet- Bob Fagaly.



10. 1794 C-6 R5+ G5 Attractive darker brown fields with tan devices. I suppose there is some minute granularity under a glass and expected minor marks. At least VG by detail. This is a great looking coin for the grade. Ex. Don Valenziano 3/13/00.



11. 1794 C-7 R5+ VF20 VF25 Chocolate brown with a hard smooth surface. A tiny tic in the obverse field K3. Some old worn pinscratches notably above ALF of HALF. Well struck with good eye Appeal. Ex. Schon Walter Stacks 1/21/03:1091.



12. 1794 C-9 R2 VF20+ Light olive brown with hints of tan. A tiny speck of carbon to the left of the date, some trivial scratches above ICA on reverse. A hard smooth planchet close to choice.



13. 1795 C-1 R2 G4 VG8+ sharpness, but harshly cleaned with severe pitting on the reverse. Details sharp.



14. 1795 C-5b R4 F12+ VF20 Pretty tan and light brown. Probably cleaned, but looks nice. Finely granular surface with a few hairlines. Well centered and sharply struck for the variety with a readable date.



15. 1795 C-5b R4 G5 VG10 or sharper by wear and I suppose the date can be made out with some imagination. Medium chocolate though a little rough. Heavy 112.6gn planchet. Ex. Superior 9/05:164.



16. 1797 C-2 R3 F12 Sharpness near VF20 and quite attractive except for a collection of small digs and scratches at the tip of the nose. These marks catch your eye without aide of a glass. Nice glossy steel brown and chocolate. LDS. The die crack from the dentils under the fraction to UN is strong and swelling shows at ICA. Weight 79.4 grains.



17. 1800 C-1 R2 PCGS AU58 Light chocolate and tan with fully lustrous, somewhat reflective surfaces. Sharply struck.



18. 1803 C-2 R4 G5 Sharpness F12 but both sides are covered with moderate roughness, partially obscuring the details on each side. The color remains a decent medium brown with a couple areas of green on the reverse. EDS M1.0.



19. 1803 C-2 R4 PCGS GENUINE XF DETAILS Sharpness VF25 but the obverse and reverse high points are covered with old, very fine hairline scratches that blend in with the toning. Nice original, glossy chocolate and steel brown. The notable marks are a spot of darker toning at the base of the 1 in the date and another at the right side of the H in HALF. LDS, Manley state 7.0 with a strong cud break at STATE. F15+. Ex. Philip M. Showers, Stack's 1969 (privately)-Willis Harrington DuPont-Fred S. "Freddy" Werner 2/1976-Superior 2/1976-Joe Flynn and Son Rare Coins Inc, (Joseph S. Flynn, Jr.) 4/20/1976-R. Tettenhorst-EPNNESS-Missouri Cabinet (Mocab 03.2.4).



20. 1804 C-4 R4 G6 Sharper. Tan and brown color with some modest porosity. Ex. Col. Steve Ellsworth, EAC 2005:24.



21. 1804 C-7 R4 VF 25 EAC M1.0 very rare die state. 84.3 grains:RLF36. Sharpness EF40 but lightly whizzed, then nicely retoned a very attractive and natural looking glossy chocolate and olive brown. No spots, stains, or notable signs of contact. However, "There is a shallow depression on the left side of the U in UNITED that appears to have been caused by debris on the die. The obverse is sharply struck but the reverse was weakly impressed perhaps due to a thin layer of grease or oil on the die (it is not uncommon for C-7s to be seen with similar weak strikes on the reverse). EDS Manley state 1.0 before any die cracks on the reverse. The "Spiked Chin" is strong." Ex. Riverside Coin Com 3/27/1972-Davy II-Tettenhorst- Missouri Cabinet 9/4/11 Goldberg-Bob Fagaly



22. 1804 C-8 R1 NGC VF25 SPIKED CHIN Minor contact marks across the devices and fields. The more notable marks are a fine scratch at U in UNITED and a rim nick over ER in AMERICA. Medium brown and lighter brown and tan in the protected areas, with steel toning across the high points and a spot of olive between UNITED and STATES. Very LDS with a large cud over LIBER, and a couple smaller ones seen at K8 and 9. VF20.



23. 1804 C-10 PCGS AU55 Steel brown. A couple tiny surface marks, but fully lustrous with good eye appeal.



24. 1804 C-13 R1 EF45 PLAIN 4 WITHOUT STEMS. Possibly 5 points sharper with some evidence of a past cleaning. Nice light chocolate and tan with lustrous surfaces.



25. 1806 C-4 R1 VF30 Medium brown. The surfaces are smooth. A small dropped lamination under D of UNITED. Some soft striking at leaves under RAC, Date, and LIBERTY. Sharp.



26. 1806 C-4 R1 XF40 TRIPLE STRUCK OVER OFF CENTER BROCKAGE. XF 45 sharpness abut there are some light contact marks. These include a horizontal scuff in the field off the chin and neck and a collection of thin nicks under AME. Glossy chocolate brown with frosty light golden brown and tan in protected areas. This piece was struck three times.



27. 1807 C-1 R1 EF40 Glossy dark steel brown with reddish brown toning in protected areas. A tiny nick on the eye brow, another in the middle of the neck, and a shallow low spot under the first T in STATES (as struck) are the only marks worthy of any mention. Extremely rare EDS, Manley state 1.0 early, with fine die clashmarks on the obverse and sharp dentils all the way around the obverse. There are strong die polishing lines in the field down from the chin and others connecting the bust to the dentils below. Plated in the second edition of the Cohen book to illustrate the early die state (page 65). Davy #07.1.31.



28. 1807 C-1 R1 NGC AU55 The notable marks include one in front of the chin, a pin scratch in the obverse field at K8 that blends in nicely, and a couple around the central reverse legends. Lustrous dark brown dark olive toning on smooth, attractive surfaces. AU50.



29. 1809 C-1 R4 F12 F15 but recolored glossy reddish chocolate and lighter olive brown. No roughness or verdigris, but there are light contact marks scattered over both sides. The notable ones are a few faint hairline scratches between star 13 and the adjacent curl and a nick close over the E in CENT. MDS, Manley state 2.0. A clear die crack passes through the tops of MERICA. This is the Breen plate coin for his die state II (his encyclopedia, page 296).



30. 1809 C-3 R1 MS60 Sharply struck light chocolate brown. I suppose there are a couple specks near STA of STATES worth mentioning. Close to flawless in terms of marks.



31. 1809 C-5 R1 EF45 1809/6. Lustrous bluish steel and brown. The faded red is what remains of an old cleaning. Still attractive. Popular so called overdate.



32. 1811 C-2 R3 VF25+ VF35. Dark chocolate with surfaces that appear hard and smooth under a thin coat of Care or wax. There is a tiny nick by star 10 and a bit of crud by the hair ribbon. Well struck. Scarce as a date.



33. 1825 C-1 R3 EF40 Glossy light brown. Reverse rotated 120 degrees CW. With the edge egg.



34. 1825 C-1 R3 NGC XF40 Free of any notable detractors with only trivial marks across the fields and devices. Lighter somewhat reddish brown with olive steel overtones on the high points and subtle tan in the protected areas and underneath. Smooth surfaces. VF30.

RARE 1826 C2 TWO STAR BREAK



35. 1826 C-2 R6 PCGS VG Details Dark and corroded with some scratches both sides and rim bumps. BUT this example has the rare two star cud break! Very rare. Pretty? No. Do you have one? No.



36. 1828 C-2 R1 NGC MS62 BN Free of notable marks, with only one speck of verdigris seen at star 8. The obverse is a lustrous mix of light brown with steel overtones a dark red spot in front of the forehead. The reverse is dark olive and steel with lighter brown spots showing underneath and along the rim. Partial cartwheel luster remains on both sides. MS60.



37. 1832 C-3 R2 ANACS AU53 The only notable marks include a fine vertical scratch through the bar under CENT and a pin scratch blended perfectly at the wreath under ED in UNITED. Lustrous light olive brown with a few darker steel spots and subtle maroon overtones. There is flaking seen above HALF and below NT in CENT, and some fine, raised granularity as struck with a rusted die. The surfaces are smooth and attractive otherwise. AU50



38. 1849 C-1 R2- MS60 Pretty sea green and tan color. Obverse well struck. There is some evidence of grease or erosion on the reverse.



39. 1849 C-1 R2- PCGS MS62 Light brown. Sharply struck . Couple tiny rim marks. Nice color.



40. 1850 C-1 NGC MS61 Light chocolate with some mint red across the devices. There are some scattered marks, but sharply struck. The grade seems a little stingy by NGC standards. Deserves to be broken out and brushed.



41. 1851 C-1 R1 AU50 Lustrous light brown.



42. 1851 C-1 R1 PCGS MS63 Fully lustrous light brown. Early die state with the base of the misplaced one clearly visible.

HOLED HALF CENT COLLECTION



43. HOLED HALF CENT COLLECTION A fabulous collection of holed Half Cents of various dates and varieties from 1795 to 1857. Includes an 1808/7 and 1811 I presume to be real, an 1831, an 1852, and an 1836 I presume to be copies. All presented in a custom made board, "The Hole Story". 35 pieces. A great conversation piece. Must be examined!

LARGE CENTS



44. 1793 S-3? **PCGS GENUINE CHAIN CENT** Basal state though the full portrait and all of the chain remain visible. Dark brown with a full complement of marks. Clearly identifiable as a chain cent.



45. 1793 S-9 R2 F12 VF20 or slightly sharper. Medium brown color though some evidence of an old cleaning. No bad marks, but evenly granular surfaces. Plenty sharp. A good coin for date or type.



46. 1793 S-12 **ELECTROTYPE** Decent electrotype from an XF coin. Mostly reddish brown, but some lead color bleeds through.

BILLY JOEL INSPIRED 1794 S-24 APPLE CHEEK



47. 1794 S-24 R1 PCGS AU Damaged APPLE CHEEK variety. A well known coin. Really a nice XF with an attempt at drilling a small hole at K12 between B & E. Please don't repair this Apple Cheek beauty. Some one should love her just the way she is.



48. 1794 S-27 R5 VG7 F12. Dark brown. A finely granular surface with the typical quota of marks. Swelling central reverse. Decent eye appeal for the grade with all diagnostics sharp.



49. 1794 S-29 R2 VF35 THE ORNATE HEAD EF40+ Dark chocolate. Virtually flawless in terms of marks. Finely and evenly granular over all. LDS with die cracks obverse and reverse. Good eye appeal, Ex. Dane Nielsen. Del Bland.



50. 1794 S-42 R3 F15 Sharpness VF25. Even chocolate steel color. The surfaces are evenly granular reducing the grade, but the eye appeal is pleasing.



51. 1794 S-43 F12 VF+ sharpness. Evenly granular surface. A rim bump K5 obverse. Steel brown color.



52. 1794 S-54 R3 PCGS GENUINE The sharpness of this cent is EF40 and there are no noticeable marks. But the darker brown color coupled with extensive granularity reduces the value to about F15.



53. 1794 S-57 R1 NGC XF45 The more notable marks include small scratches above K9, below the chin, beneath TES in STATES, with minor marks and chatter scattered across both sides otherwise. Medium reddish brown with olive across the high points. The surfaces are free of corrosion and verdigris. VF35.



54. 1795 S-76b R1 VG8 Medium brown. Cool dramatic planchet crack K5. A great example of an early mint product.



55. 1796 S-82 R5 PCGS VF Details Sharp dark chocolate. Granular surface. Dramatic flip over Double Strike with a full date obverse and reverse.



56. 1796 S-85 R5- AG3+ G5 sharpness. Cleaned and retoned a bluish steel and brown. A small pinprick center at l reverse



57. 1796 S-88 R4 VF25 VF30. Dark chocolate with a hard, smooth surface. Possibly waxed or "Sheldonized" at some time in the past. A couple marks in the field K8 obverse. Great eye appeal over all.



58. 1796 S-88 R4 F12 Sharpness VF25. Dark olive steel with some microscopic porosity and a few scratches Under the bust. Well struck for this variety with decent overall eye appeal.



59. 1796 S-89 R3 NGC F15 Steel brown. Mostly smooth with a couple minor hairlines. Pretty nice example for this Variety. Ex. Tom Reynolds and comes with his distinctive yellow envelope graded net F12.



60. 1796 S-89 R3 PCGS VF Details Dark brown evenly corroded surface. Some scratches in hair and below eye. Value of VG.



61. 1796 S-90 R5+ G4 Sharpness G6 with minor nicks and hairlines across the devices and fields, as well as small rim bruises from above LIBERTY over to K2, as well as under the date and bust tip. The surfaces remain fairly smooth and the date is easy to read on this scarce variety.



62. 1796 S-93 R3 PCGS Genuine VF Details Dark steel with reddish tan devices. Minute granularity and pitting. Sharply struck.



63. 1796 S95 R5+ VG10 Draped Bust, Reverse of 1795/1796 The color is a decent medium brown with maroon undertones, but the surfaces are lightly and evenly granular. There are also some tiny rim bumps on the reverse. Tied for CC#8.



64. 1796 S-99 R5 VG8 Nice medium chocolate steel. Smooth surfaces. A couple tiny rim ties. Perfect EDS with mumps, but no die breaks. Ex. Jack Robinson Sale:178.



65. 1796 S-100 R5 PR1 DRAPED BUST REVERSE OF 1797. Fr 2 net Pr1. Glossy and splotchy from a poor recoloring. There are also some very light scratches on both sides. The date is easily readable and the attribution is also simple. EDS. Ex. M & G Mail Bid sale #3, 05/07/95:67.



66. 1796 S-102 R4 F12 DRAPED BUST REVERSE OF 1794. Very sharp, VF35 or maybe better, with medium brown color. However, both sides are covered with light corrosion, plus there are some heavier pits at the bottom of the obverse, probably spots of corrosion that were removed long ago. The reverse also shows some tiny rim bumps. Although a minus coin, the color and details contribute to an overall attractive appearance.



67. 1796 S-105 R5- PCGS AG3 DRAPED BUST REVERSE OF 1797. Very attractive and mostly smooth AG3+ with nice eye appeal. There is evidence of minor contact on each side, but overall this is a VERY nice example of a low-grade rarity. EDS state A. Ex. M & G Auctions of the Ludwig T. Smith Sale, 01/07/95, 347 as G44.



68. 1796 S-106 R4 NGC VG10 Dark steel with evenly granular surfaces. A couple old pinscratches, but the rims are clean and all the diagnostics sharp. Ex. Greg Hannigan-Adam Mervis.



69. 1796 S-111 R5- G6 DRAPED BUST REVERSE OF 1794. CC#25. VG8 details with dark, "greasy" surfaces that are blurry from minor roughness and a possible smoothing. The obverse shows some fine scratches, and the reverse shows an even heavier grouping in the top right corner. Comes with a Grellman grading card "7+/6 MDS Breen III."



70. 1796 S-112 R4+ NGC F12 DRAPED BUST REVERSE OF 1794. CC#13. Original medium brown with strong details. There are a couple of minor rough patches here and there, plus a tiny nick or two, but overall this is a nice example. VG10



71. 1796 S-113 R5 F12 DRAPED BUST REVERSE OF 1797. CC#11. Very sharp and original with some minor roughness on both sides, and that roughness is probably just enough to keep the coin from grading at PCGS. The color is a decent medium brown, and the coin retains positive eye appeal overall. MDS state B with faint cracks at the date.



72. 1796 S-114 R5- FR2 Glossy steel and chocolate brown. Early die state prior to breaks. Lots of wear, but problem free. Ex. Rod Burress.



73. 1796 S-114 R5- PCGS VG10 DRAPED BUST REVERSE OF 1797. Attractive glossy light brown color and above average surfaces, with just a few tiny nicks. EDS state A. Ex. EAC 04/92:63-Dr. Willard J. Carmel-Superior 09/97:202.



74. 1796 S-116 R5- VG8 Sharpness VG10+. Dark chocolate with tan devices. There is some microscopic pitting and the surfaces may have been wheeled but the naked eye appeal is good for the grade.



75. 1796 S-117 R5+ AG3 Sharper, but dark and slightly bent.



76. 1797 S-121a R7- G4 PLAIN EDGE REVERSE OF 1796 (SINGLE LEAVES).CC#2. Glossy smooth medium brown, B and E in LIBERTY inexplicably missing but there is no evidence of a hole having been plugged. Some light hairline scratches are visible in field between the date and hair ribbon, plus a few minor spots of black corrosion near rim at K4-5 reverse. The weight is an appropriate 10.76 grams versus 10.89 grams when newly struck.



77. 1797 S-122 R5+ G4 WITH STEMS REVERSE OF 1797. CC#16. Smooth medium brown with pretty color and surfaces. The obverse shows three tiny rim bumps, but any other defects are hard to be found. Very nice for a tough R5+ variety. Die state III with the crack extending through the tops of MERIC.



78. 1797 S-126 R3 VF20 Sharper with medium chocolate and tan color. Some crud on the reverse, probably removable. E-MDS with obverse crack from rim K4 to neck.



79. 1797 S-128 R3 NGC VF20 BN WITH STEMS REVERSE OF 1797. CC#28. Attractive, original medium brown example with only a few tiny circulation marks to be found on either side. Die State III, crack from left rim to lowest locks, another crack from right of date into the drapery, right 1/3 of reverse weakly struck. Ex. George Ramont (March 21, 1972)-Jules Reiver, Heritage 01/24/06:19326. F15.



80. 1797 S-130 R2 PCGS VF25 WITH STEMS REVERSE OF 1797. Original medium chocolate brown and extremely attractive. LDS with heavy rim break behind the head and a fainter die crack in front of the portrait. Strong details with plenty of hair separation and even more separation in the ribbing on the reverse leaves. F15+.



81. 1797 S-131 R2 VF20 WITH NO STEMS REVERSE OF 1797. Tied CC# 16-18. Oh, what might have been! Ultra-choice tan brown color and bold EF details, but the obverse shows several tiny henpecks, and the coin was very unevenly struck. Despite these flaws, the color and eye appeal of this coin are very positive, and the Stemless Reverse feature is still readily apparent despite the crazy strike. Definitely a coin with a lot of character, and of course a major Redbook variety, too.



82. 1797 S-133 R5 G4 WITH NO STEMS REVERSE OF 1797. This coin is smooth and attractive to the naked eye, and it takes a strong glass to reveal some very faint underlying roughness. Nicely contrasting color creates good eye appeal. The date is faint yet still readable, and the Stemless Reverse feature is plainly visible to the naked eye.



83. 1798 S-145 R3 VG10 MIKE EISEN FIRST HAIRSTYLE. LARGE 8. Brown with smooth problem free surface. Just a trace of Granularity. Clean rims. Nice for the grade.



84. 1798 S-145 R3 NGC VG8 FIRST HAIR STYLE Average due to some tiny scuffs on the bust. Very attractive medium brown color with nice eye appeal. LDS, Breen IV, with obvious swelling on both sides, strongest at OF and the wreath below. Ex. Lillian Willins-Bill Noyes-EAC 01/09/93:61-March Wells-Mike Iatesta 04/01-Superior 09/19/05/:319.



85. 1798 S-145 R3 VF30 EF40 Chocolate steel with tan highlights. Minutely granular. Some weakness in the central reverse, but virtually mark free. EDS. Ex. Naftzger-Dan Holmes, M&G/Goldbergs 9/6/2009:263.



86. 1798 S-146 R5- VG10 FIRST HAIR STYLE CC#11. Glossy medium brown with very sharp details, but with areas of minor roughness to the planchet. Some of this roughness has apparently been smoothed down on the obverse. Nicely recolored and looks mostly original now. LDS with die rust plainly visible on both sides, and the edge is partially engrailed with diagonal reeding. Ex. Jack Robinson 06/88
-JR Frankenfield, Superior 02/01:383.



87. 1798 S-149 R4+ G4 VG8 and nice glossy brown, but some old obverse pits detract.



88. 1798/7 S-150 R5 VG10 F12 or slightly sharper. Nice even dark chocolate steel color. The surfaces appear smooth. Though are slightly grainy under a glass. Couple light hairlines and a short old scratch under O on ONE.



89. 1798/7 S-152 R2 NGC VG8 OVERDATE Minor contact marks and minor surface roughness on the reverse. Light brown with original surfaces. VG7.



90. 1798 S-155 R3 VF25 REVERSE OF 1796 Sharpness XF40 but with light corrosion and traces of verdigris underneath the rather glossy surfaces. There is a prominent dig at D in UNITED, as well as fine hairlines across the face, hair, neck, and the fields of both sides. The toning is olive brown and steel, and the legends and date remain bold and complete.



91. 1798 S-156 R5+ G5 Close date reverse of 1796. The obverse is close to VG with a couple tiny rim marks. Exceptional light brown color with a hard smooth surface. Aesthetically superior to others of this variety in technically higher grade.



92. 1798 S-157 R2 VF35 FIRST HAIRSTYLE. SMALL 8. Attractive medium chocolate brown. A few minute planchet flakes as made. Die state IV. Extensive die rust on both sides as well as the die crack from the dentils K4 to Liberty's neck and the reverse crack under ES OF. A great example of this advanced die state and of the Redbook type. Ex. Dorothy Paschal-Dane Nielson.



93. 1798 S-158 R4 PCGS VF25 FIRST HAIR STYLE A very attractive example to my eyes. Medium chocolate brown with some areas of darker toning. EDS with perfect obverse. F12.



94. 1798 S-158 PCGS VF30 ALLEN ROSS FIRST HAIRSTYLE. Sharpness EF with dark steel color and some light even surface Granularity. There are some light pin scratches on the reverse. Ex. Robinson S. Brown, Jr. Superior 9/86 223, Bob Matthews, Superior 5/89:314, Robbie Brown Superior 1/27/96:223.





95. 1798 S-159 R3 VF20 FIRST HAIR STYLE CC#13. Glossy medium brown surface and details that are very bold and suggest a higher grade than VF25. MDS with a branch crack upper ribbon to top left of L joining crack along top of LIB, but with no cud at L. Ex. M & G Auction of the Ludwig T. Smith Sale 01/07/95:366.



96. 1798 S-161 R2 PCGS VF35 FIRST HAIR STYLE There are a couple hairline scratches on the reverse seen over and below OF, blended in well, a pin point sized mark left of the date, with trivial marks and traces of light pin scratches on the fields and devices otherwise. Medium brown, dark brown, and olive blend with a light scuff in front of the nose showing a lighter brown. First Hair Style variety with a thin lamination in the field near K4, a die break right of UNITED and a couple more delicate breaks above STATES. The surfaces are smooth and attractive. VF30.



97. 1798 S-163 4 F12 FIRST HAIR STYLE CC#9. The entire coin has a maroon tint, and there are some areas of very minor roughness, plus some scattered contact marks. CC#9 and very attractive in hand. Die State IV with heavy blanking from below the lowest curl at rim to under 17. Ex. Stacks 01/17/06:1829



98. 1798 S-167 VF35 Light chocolate with a hard smooth surface. Problem free. MDS.



99. 1798 S-169 R3 VG10+ Nice medium chocolate brown. Minor marks consistent with grade. Ex. EAC 2011:215, EAC 2012 : 153. M-LDS.



100. 1798 S-170 R3 VF35 AU50 sharpness, previously cleaned and now toned rather glossy medium brown, steel, and tan with orange highlights on the reverse and green and red overtones on the obverse. Minor marks are seen behind the eye, as well as on and above the bust, with some dark verdigris seen around ATE in STATES. The surfaces are smooth and attractive otherwise, broken out of a PCGS AU Details holder. Es. Robert C. Hall. 10/1978-Ralls.



101. 1798 S-171 R4 VF25 A good five points sharper. Medium chocolate and steel. A hard smooth surface. A minute hairline scratch across Liberty's hair. MDS with rim cud K10 left of LIBERTY. Very scarce in higher grades.



102. 1798 S-176 R4 F15 Five points sharper with too many light contact marks for the higher grade. The notable ones are a thin diagonal nick in the hair left of the earlobe, a trio of small rim nicks under the bust, and a half dozen, thin parallel nicks in the field under the tip of the chin. Glossy chocolate brown speckled with darker chocolate and olive. E-MDS, Breen II. Ex. Tom Reynolds-Walter Husak-EAC 2008 05/10/08:309.



103. 1798 S-177 R4+ G5+ SECOND HAIR STYLE Average with deductions for some tiny rim nicks. Glossy dark chocolate brown with mostly smooth surfaces. Die state IV with a crack from bust through 8, another from 8 through 179 ending under curl. Ex. M & G EAC #9, 07/31/93:595 as G6-Dr. Willard J. Carmell-Superior 9/97:246.



104. 1798 S-178 R5+ G4 REVERSE OF 1796 CC#11. The obverse is definitely VG8, but the reverse is notably weaker as typically seen, although the single leaves are plainly visible. Very dark brown with finely granular surfaces. The obverse shows some light pitting, and the reverse shows some equally minor hairlines. Die State III with crack through date extending to rim under bust.



105. 1798 S-178 R5+ G4 STYLE II HAIR SMALL 8 REVERSE OF 1796. G5 sharpness but the planchet displays microscopic roughness and there are myriad fine scratches on the portrait. Slightly glossy dark olive brown with lighter steel brown toning on the highpoints. LDS with a pair of die cracks through the date. The date is clear but the legends on the reverse are weak, although the single leaves at the top of the wreath are visible.



106. 1798 S-180 R5+ G4 SECOND HAIR STYLE CC#25. Dark chocolate brown with black and maroon toning mixed in on both sides. Minor surface roughness also conceals some faint scratches and circulation marks. MDS state B with a heavy reverse rim break cut over TATE, which results in some weakness at the date on the opposite side.



107. 1798 S-180 R5+ G4+ STYLE II HAIR WITH SMALL 8 Sharpness VG7, covered with uniform microscopic porosity. No marks or verdigris. Dark olive and chocolate brown with some gloss showing on the obverse highpoints. The date is easily readable but the lower part is weak, as usual due to the opposing cud break at TATE, which is strong on this example. The legends are complete except for weakness on the fraction. M-LDS, Breen state IV late, with a sunken retained cud break at UN where the terminal cud break is about to occur. Ex. Dan Holmes.



108. 1798 S-185 R2 VF30+ STYLE II HAIR WITH SMALL 8 Sharpness EF45 but covered with very fine granularity, strongest on the reverse but not really strong anywhere. No verdigris, and the only marks are a thin horizontal nick on the upper lip and a faint diagonal hairline scratch in the field off the bust tip. Rather glossy dark olive and steel brown. E-MDS, Breen state IV. There are a few fine die cracks at TY but the radial crack through the Y to the forehead has not formed. The reverse is rotated 15 degrees CCW. Ex. Dan Holmes.



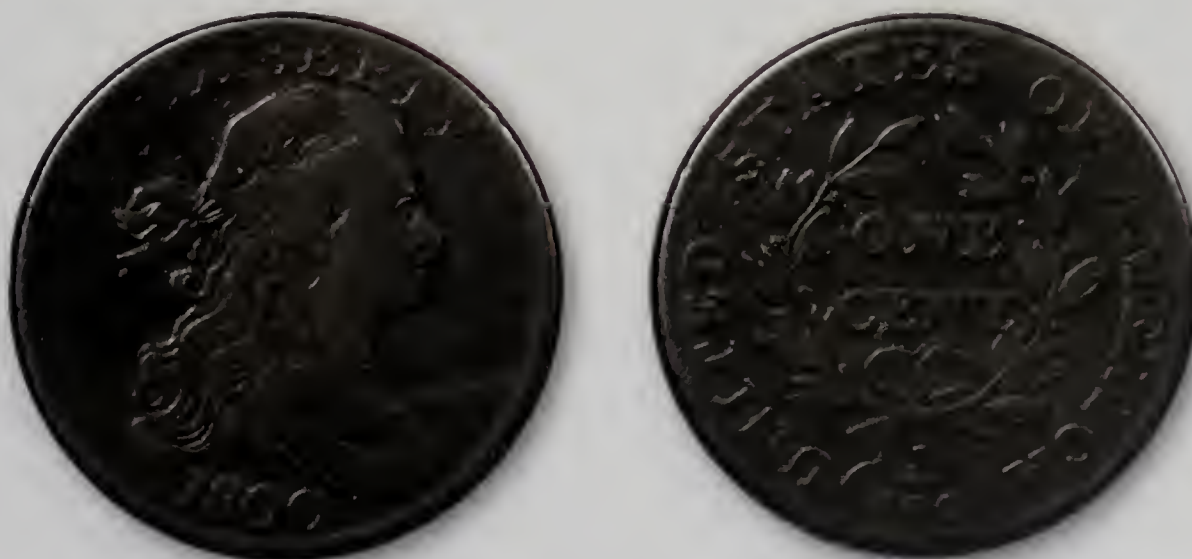
109. 1798 S-186 R2 F12 STYLE II HAIR SMALL 8 Slightly sharper but covered with microscopic roughness that's partially hidden under the glossy reddish chocolate and olive brown patina. Traces of shallow verdigris are tucked into protected areas at the bottom of the reverse. No notable contact marks. The date and legends are complete and clear. M-LDS, Breen state VIII, with a cud break connecting the 00 in the fraction to the rim below.



110. 1798 S-187 R1 NGC VF25 SECOND HAIR STYLE Too many light nicks and rim bumps. Original, dusky brown color with very sharp details. Die state B with cracks and heavy cuds in front of face and reverse cracks at ribbon and ICA.



111. 1799 ELECTROTYPE COPY A nicely executed and cleverly done electrotype copy. The reverse features all the Diagnostics of an S-174.



112. 1800 S-190 R3 VG10 1800/798 OVERDATE. FIRST HAIRSTYLE. Chocolate brown. Slightly sharper with a trace of granularity. Otherwise problem free with good overall eye appeal for the grade. Ex. Rod Burress.



113. 1800 S-191 R3 AG3 Very worn and of interest only because of the advanced late die state with dramatic swelling on the central reverse and at the fraction. Medium brown. Nice smooth surfaces. Some reverse rim nicks.



114. 1800/1798 S-191 R3 PCGS GENUINE XF DETAILS There is a tiny mark behind the lower hair curls and a small scratch on the fraction, the only notable marks. Olive and steel brown blend with lighter orange brown in some of the reverse protected areas. There are incused dentils seen above STATES, a couple small breaks at ICA in AMERICA, and die clashing underneath the wreath. The overdate feature is clear. VF30.



115. 1800/79 S-192 R3 NGC VF20 OVERDATE WITH SECOND HAIRY STYLE CC#26. Strong details on a dark brown planchet, with just the slightest hint of granularity under a strong glass. There are a couple of nicks here and there, but nothing out of the ordinary. Die State III with reverse crack rim through IC, right ribbon, fraction bar and I to rim below, additional crack from right foot of R that joins former crack, below final leaf on lower right. F15



116. 1800/79 S-193 R4 NGC F15 OVERDATE WITH SECOND HAIR STYLE Strong details and the color is a very nice, glossy chocolate brown. There are a couple of rim nicks at the top of the obverse, but overall this is a very nice example of an R4 Redbook variety. Die State B with a light reverse die crack at the fraction. F12.



117. 1800 S-202 R4+ G6 Impressive late die state with significant swelling clash marks and the obverse die Crack K8. Probably recolored, but now a nice chocolate brown.



118. 1800 S-203 R3 VF25 Lustrous light chocolate and steel. Typical soft strike at forehead, but certainly attractive overall with a hard, glossy planchet. Strong clashmarks reverse. Ex. Tom Reynolds.



119. 1800 S-209 R3 VF20 NORMAL DATE CC#15. Very sharp details and glossy surfaces. Obverse has a dark color and it has slightly blurry appearance. The obverse has some random, tiny spots of corrosion, plus some fine scratches well hidden in the hair. The reverse is the best side of this coin, and it faces up as a dark and glossy AU. EDS state A with the usual crack through RICA.



120. 1800 NC-3 R6- AG3 Sharpness VG, but dark and corroded with old green verdigris over half of the reverse. The spiked I is visible. Not pretty, but still rare.



121. 1801 S-215 R4+ VG10 Sharpness near EF40 but dark and covered with fine to moderate roughness under a slightly glossy dark olive brown and steel patina. There are traces of shallow verdigris in a few of the protected areas but no notable contact marks. Has the look of a cent that was nearly new when lost in soil or placed in an unfriendly environment for a period of time. M-LDS. Breen state V, with swelling and arcing die cracks on the lower left part of the obverse and bold die clashmarks at TES-OF.



122. 1801 S-216 AU50 Lustrous light chocolate and technically there is little that could be called wear. But a typical strike for the variety. The eye appeal is great.



123. 1801 S-220 R3 VF20 1/00 reverse. A good ten points sharper. Attractive tan and brown color is probably the result of a successful cleaning, nicely retoned. A few tiny pits on the neck and some field marks. Well struck and presents a good appearance. Ex. G. Lee Kuntz: Superior 10/91:242.



124. 1802 S-226 R3 F12 NORMAL REVERSE Cleaned and recolored long ago, now with an almost completely natural look that is very attractive. Very strong hair details, plus lots of ribbing visible on the reverse leaves. Only minor signs of contact.



125. 1802 S-235 R3 F12 NORMAL REVERSE From the sale of the Jules Reiver collection where it was described as "Planchet Flaw, Improperly Cleaned-NCS. VF details. Fine 12 EAC. Nearly the terminal die state with a rim break over RTY, and a crack through the right obverse field, across Liberty's neck, curving down to her shoulder. Two small planchet cracks are noted on the border at the left, one visible on both sides, the other only on the reverse. Recolored, with mostly olive color splashes with dark steel." Ex. C. Douglas Smith 11/30/68-Jules Reiver Heritage 01/24/06:390.



126. 1802 S-237 R2 F15 NORMAL REVERSE Solid VF details, but recolored and covered with several tiny nicks on both sides. The recoloring is a little bit dark and splotchy, with dark chocolate brown and some inclusion of burnt orange. The best identifying mark is a tiny nick in the field near the bottom of the neck. Struck from misaligned dies, leaving the left obverse very strong and the right obverse much weaker. MDS Breen III, Noyes B, with reverse die crack from rim through N of UNITED through lowest leaf on left. Ex. Walter Reed 04/1704-Colonel Steven Ellsworth 04/30/04



127. 1802 S-238 R4 VF20 NORMAL REVERSE Sharp VF25 with some tiny well-hidden contact marks in the hair and in the right obverse field. Nice glossy medium brown color, possibly cleaned and recolored, but perfectly done if so. Struck from misaligned die such that the left reverse is weak and the right reverse is very strong. Ex. Coin Galleries 11/99-2729-Denis W. Loring-Bob Clark-2000 ANA Sale Bowers and Merena Lot 304-Bob Clark-CVM.



128. 1802 S-240 R3 NGC VF25 There are minor contact marks seen on the cheek, hair, and fields, with traces of light pin scratches across the obverse fields and devices. Dark chocolate brown. Die clashing seen at the neck, as well as under the ribbon, as well as an arcing die break seen from above AT in STATES to over AM in AMERICA, with another branching off it through ONE CENT to the ribbon loop. Smooth, attractive surfaces. VF20.



129. 1802 S-242 R2 F12 F15. A few tiny rim ticks K9, 10, 11 obverse and some minor field marks. Medium steel brown color. A hard smooth planchet.



130. 1803 S-244 R4 VF25 Hard to judge as this cent has almost no wear and no marks. Finely and evenly granular. Dark steel color. Ex. EAC 2011:292.

TERMINAL DIE STATE 1803 S-49 CORRECTED FRACTION



131. 1803 S-249 R2 VF20 CORRECTED FRACTION 100/000 Sharpness near EF45 but lightly corroded, strongest on the reverse where there are a few shallow pitmarks at the second T in STATES. No verdigris and only a few trivial contact marks, including a thin nick in the field off the tip of the nose. Mostly glossy reddish chocolate and olive brown. Rare terminal die state, Breen state VI, with a large cud break at the bust tip and another joining RIC to the rim above. The corrected fraction feature is clear. Ex. Dan Holmes.



132. 1803 S-251 VF20 Medium brown. Nice glossy hard surface. A few tiny field marks consistent with the grade. A nice problem free cent. Removed from a PCGS VF30 holder.



133. 1803 S-253 R4 VG7 Chocolate fields with reddish tan devices. Die state B with the arc crack under STAT



134. 1803 S-259 R4 VG7 Sharper but a few pits on the obverse. The reverse is close to choice and has the intermediate die crack over TAT. A scarce die state.



135. 1803 S-259 R4 VG10 Ghost 3 var. Couple points sharper. Dark chocolate and steel color. Surfaces not perfect, but pretty nice for the grade. E-MDS. Light crack through STAT.



136. 1803 S-262 R3 PCGS F12 SMALL DATE SMALL FRACTION Cleaned and recolored with medium brown fields and lighter tan brown high points with a touch of orange. Minor contact marks only, with a tiny rim bump at obverse K8 being the most notable. Die State A with perfect reverse. VG 8.



137. 1803 NC-1 R5+ VG8 Dark chocolate and steel. Sharpness close to F12 but a trifle granular. No real detracting marks. EDS. Ex. Jules Reiver.



138. 1804 S-266a R4+ NGC VG10 EDS with neither cud. The auction insert and the catalog description from the Superior Mike latesta sale remain with the coin, where it was described as "VG7. Slightly sharper but lightly cleaned and nicely retoned glossy medium brown. There is an area of very light roughness in the field before the face but the rest of the planchet is smooth and attractive. The only mark of any significance is a light rim bruise at the second S in STATES. EDS Breen State 1. The date is bold and the legends are strong. A decent lower grade example of this tough date." Great color and almost fully retoned.. Ex. Tom Reynolds 1993-Mike Iatesta-Superior 09/19/04:423. VG7.



139. 1804 S-266c R2 G4 LDS with obverse and reverse cuds. Mostly smooth medium brown, but with two minor vertical hairline scratches on the portrait. The date is full and bold, and the reverse is full except from the typical weakness on the left side. LDS.



140. 1807 S-271 VF20+ At least 5 points sharper. Chocolate fields with tan devices. Minutely granular surfaces. No detracting marks and good eye appeal overall. EDS state A prior to the comet break.



141. 1807 S-271 VF20+ Slightly sharper dark chocolate with tan devices, mostly smooth surfaces with no obvious detractors. Dramatic late with full developed "comet" break as well as the later die break in the obverse fields K 3 and K 4. An interesting and attractive cent.



142. 1807/6 S-273 R1 NGC EF DETAILS, OBVERSE SCRATCHED OVERDATE From the 05/29/05 Superior Auction where it was described as "VF30 Sharpness near EF 40 with some faint hairline scratches on both sides, mostly in the right obverse field and on the bust. None of these scratches is notable, but there are too many to ignore. The only notable mark is a curved very light pin scratch from the earlobe up into the hair. Glossy chocolate brown with a few specks of darker olive toning on the lower half of the obverse. E-MDS. Breen State II. The overdate is bold." Ex Thomas P. Warfield (privately)-Willard C. Blaisdell (via Del Bland) 09/15/76-RENaftzger Jr (via Del Bland)-Stuart A. Hodge-Dr. Phil Ralls 06/05/87-Del Bland-Robert W. Everett (Classical American Coins)-Allan J. Kollar-Superior 05/29/05 1033 VF30



143. 1807/6 S-273 R1 XF40 Nice chocolate and steel with splashes of tan faded from mint color. There is a tiny tic in the field obverse K3 and a trivial rim nick K9 obv. Above the D in UNITED. Die state III. A beautiful cent. Ex. Jack Robinson Superior 1/29/89:609.



144. 1809 S-280 R2 G6 Dark chocolate steel, the usual color for this date. Couple points sharper with some planchet granularity. The date and legends and portrait are sharp.



145. 1809 S-280 R2 VF30 EF40 with the reverse sharper. Dark steel color as usual. The surfaces appear lustrous, but are minutely granular under magnification. There is a fine hairline scratch from star 3 across Liberty's neck almost invisible to star 13. A few traces of crud over star one and star eight. Unusually well struck for the date. Ex. Tom Reynolds and comes with his distinctive yellow envelope graded net VF30.





146. 1811 S-287 R2 NGC FINE DETAILS The more prominent marks include rim bruises at stars 9 and 10, and fine scratches in between ONE and CENT as well as around OF, with trivial marks and light porosity across both sides otherwise. Steel and dark red brown. The date and legends are bold and complete. VG8.



147. 1812 S-291 R3 F12 Sharpness VF+ and all the detail is sharp, but the color is a dark steel flecked with oxidized red verdigris.



148. 1814 S-294 R1 NGC MINT ERROR VG DETAILS DOUBLE STRUCK The notable marks include a tiny mark behind the eye, a bruise under the date, and traces of fine scratches in the fields and protected areas. Dark brown, moderately corroded surfaces. Double Struck, second strike is 90% off center, with 814 of the 2nd date showing. VG 8.



149. 1816 N-8 R3 VF30 EF40. Bluish chocolate and brown. A small scratch under O of ONE. Almost certainly cleaned and retoned but looks ok now. MDS with two rim breaks.



150. 1816 N-8 R3 NGC VF30 Medium chocolate brown with a hard smooth surface. EDS prior to the obverse rim cuds. Ex. Jules Reiver VF25.



151. 1817 N-5 R3 NGC AU58 Mottled dark chocolate tan and brown. Some darker color on the reverse. The surfaces are hard and glossy. Ex. Jules Reiver, lot 19707. EF40.



152. 1817 N-16 R1 PCGS AU53 15 STAR OBVERSE. Dark chocolate with a hard lustrous surface. Only trivial marks. A popular variety.



153. 1818 N-4 R4+ VG7 Several points sharper. The bulging of the obverse die makes technical sharpness hard to determine. Nice brown color but some reverse scratches detract.



154. 1818 N-6 R1 PCGS XF45 There are minor marks seen on the cheek, bust tip, and fields, with a fine scratch along the edge over stars 9 and 10. There is also dark verdigris seen in the fields and protected areas. Light brown and attractive tan. There is a fine die break seen wrapping around from ED in UNITED under STATES OF over to AM in AMERICA. VF35.



155. 1818 N-8 R3 VF35 VF35 Sharp with some light contact marks on the obverse, mostly on the cheek and neck. A rim nick over the second Sin STATES can help identify this cent. Glossy chocolate brown with frosty lighter brown toning in protected areas on the obverse. Double struck. Both strikes were centered on the planchet but rotated 90 degrees CCW. EDS. Ex. Dan Holmes.



156. 1818 N-10 R1 PCGS MS63 RB Bright mint red luster with light brown on the portrait and in the fields. A few fly specks but quite nice for the grade. Ms63.



157. 1819/8 N-1 R2 XF45 Chocolate with a hard lustrous surfaces. Some tannish color before the face. Well struck from the M-LDS with obverse rim crumbling. Ex. Robinson S. Brown, Superior 9/86:511 and comes with an RSB lot card in virtual mint state condition which may be extraordinarily rare in its own right.



158. 1819 N-5 R3 ICG XF45 Dark steel color with a minutely granular surface. But quite sharp with good eye appeal. Quite scarce in this condition. VF30.



159. 1819 N-7 R4 NGC VF25 Chocolate brown. Some field marks. Ex. EAC Sale 2010:327. Could benefit from being broken out and brushed. F12.

1821 N-1 EX TED NAFTZGER



160. 1821 N-1 R1 EF45 Sharpness near mint state but there is a long, dull nick or thin dent from the rim down through the second S in STATES into the leaf below. Otherwise this cent is nearly flawless. Glossy medium brown and chocolate with an arc of olive brown toning from star 1 to star 9. Sharply struck MDS with a fine die crack that meanders through the I in UNITED and the lower part of the wreath to the C in AMERICA. Ex. Spiro 11/3/1936-Willard C. Blaisdell 9/1976-Del Bland 9/1976-R.E. Naftzger, Jr-M & G /Goldbergs 2/1/2009:115.



161. 1821 N-2 R1 VF20 Medium light chocolate. A couple small nicks hidden in Liberty's hair. Another right of star seven. A hard smooth planchet.



162. 1822 N-9 R5- G6 Dark brown. Sharper and appears glossy but the surfaces have been wheeled. Small rim bruise at star one.



163. 1824 N-5 R4 VG7 1824/2 Chocolate with tan devices. Smooth surfaces. A couple ties but nice for the grade. Scarcer of the two overdate varieties.



164. 1825 N-1 R4 VG10 Certainly F12 by wear and the minor marks on decent chocolate brown fields may not merit deduction. But the story of this cent is the rim break above stars 7, 8, & 9. This is the terminal state of this die in so far as we can determine and quite scarce as such.



165. 1825 N-4 R3 EF40 Sharpness AU50 by wear but cleaned and retoned a dark chocolate walnut and steel. Some field marks and a short scratch by star 8. Another dig between D & S K9 reverse. Good eye appeal though. Ex. Phil Van Cleave, Kagin's 1/86:5449. Comes with the lot card.

CONDITION CENSUS 1825 N-10



166. 1825 N-10 R3 NGC MS64BN Bluish steel tan and rose with some sea green on the reverse. Fully struck and the surfaces appear original and unbrushed. EDS. Surely ranks near the top of the condition census.





167. 1826 N-5 R2 NGC MS62 Very lustrous tan faded from mint red. Some light staining in front of Liberty's jaw. Maybe a trace of rub on the highest points of the reverse. Well struck. Small rim break above star six.



168. 1826 N-6 R2 VF30 Chocolate and steel. Possibly recolored but a mostly smooth surface with decent eye appeal for the grade.



169. 1827 N-2 R3 VF30 Nice golden tan and brown. Well centered and well struck on a hard, smooth planchet. Ex. RVP 7/30/89-Dan Holmes. MDS.

CONDITON CENSUS LEVEL 1827 N-12



170. 1827 N-12 R5 F15 Sharpness VF30 or slightly better but covered with fine granularity. No verdigris or marks. Slightly glossy very dark steel with chocolate brown toning on some of the high points. MDS, the die crack between the 1 and 8 now relatively strong. This example has a fine crack like line that meanders from star 2 to the lower lip, and this line was once thought to be a die crack and is mentioned in John Wright's book on the cents of 1816-1839.



171. 1827 N-12 R5 G6 Couple points sharper. Dark chocolate surfaces granular. A couple reverse scratches have been smoothed out.



172. 1828 N-3 R2 VF35 Sharpness XF45, but cleaned a light brassy brown color and "wheeled" Looks better.



173. 1828 N-10 R1 PCGS XF40 SMALL WIDE DATE There are minor contact marks seen on the face, neck, and obverse fields, fine hairline scratches around the reverse peripheral legends. Medium brown and olive with lighter reddish brown in the protected areas and underneath. The surfaces are smooth and attractive. VF35



174. 1828 N-11 R2 NGC AU58 LARGE DATE No major or notable detractors. Light brown and olive brown mottled with dark red and steel spots. The surfaces are smooth and lustrous. From the Jules Reiver collection, the provenance is noted on the label. AU50+.



175. 1830 N-10 R4+ VG8 Medium chocolate brown. EDS.



176. 1830 N-11 R5 NGC F12 DETAILS Dark steel, not quite black, but quite granular. All detail sharp. E. Jules Reiver. Net G6.



177. 1831 N-11 R2 VF35+ Nice steel and chocolate with traces of faded color. A little rub on the cheek and above Liberty's eye. A scarce die state with the crack above TES now a retained cud just prior to sinking.

HARPOONED WHALE DIE STATE 1831 N-12



178. 1831 N-12 VF25 LDS. So called Harpooned Whale die state with massive cud at stars 12 & 13. Close to EF by sharpness, but some old graffiti in obverse field K9. Nothing's wrong with the cud though. Nice brown color with smooth surfaces.



179. 1831 N-14 R4 NGC VF25 **LARGE LETTERS DOUBLE PROFILE** Free of notable marks or defects. Dark brown and olive in the protected areas. Smooth, attractive surfaces. Full Double Profile. VF20.



180. 1832 PCGS F15 **MINT ERROR 30% OFF CENTER** Medium olive brown with lighter brown and reddish brown in the protected areas. Struck 30% OFF CENTER. The most notable mark is seen above ED in UNITED, with minor marks and pinscratches seen across the field and devices of both sides.



181. 1834 N-5 R4 F12 Sharpness EF40. Recolored walnut brown and chocolate. Some pitting and granularity reduces the grade. Ex. EAC 2006:362.



182. 1835 N-3 R3 VF35 Sharper bluish chocolate steel and tan. Probably retoned but nice appearing with a hard glossy surface. Ex. EAC 2008:494.



183. 1835 N-11 R4+ VG8+ Chocolate and tan with the obverse nicely woodgrained. A scarcer E-MDS with the reverse cracks developed, but prior to the crack up to the dentil above 4. Your die state collection of 1835 N-11s cannot be complete without this die state!



184. 1835 N-19 R5 F15 Sharpness close to EF40 but evenly and thoroughly granular surfaces. Probably stripped and recolored. Still quite scarce. Ex. Tome Reynolds.



185. 1837 N-5 R2 AU58 PLAIN CORD. SMALL LETTERS REVERSE TYPE. Lustrous rose tan and steel. The reverse an uneven mix of tan and darker steel. Fully lustrous and certainly attractive in an appaloosa pony sort of way.



186. 1838 N-4 R2 PCGS MS65 BN Glossy light golden brown and tan blending to light chocolate brown on the reverse. Faded frosty mint color shows in protected areas on the obverse and covers all the protected places on the reverse. The only notable marks are a horizontal nick under the right edge of the eye, a speck of dark toning in the field near the curl at the back of the neck, and a couple microscopic hairlines over the N in ONE. EDS but not the earliest state. A fine die crack extends down from the dentils to the left point of star 9 and to the inner section of the hair bun where it fades out. Nice luster and eye appeal. Ex. B. Max Mehl personal collection - T. James Clarke 10/54-Ted Naftzger. MS63.



187. 1838 N-11/13 R2 EF40 CORONET Glossy medium brown surfaces with subtle mint frost on each side. No marks or distractions of any consequence, just a few spots of darker color mixed into the toning and a couple miniscule contact marks. MDS. (N-13) with lapped, partially flowlined surfaces, but without the obverse break.





188. 1838 N-15 R5- F12 A few points sharper. Medium reddish brown color. The surfaces mostly smooth, but a few rim nicks detract. Still scarce.



189. 1838 N-16 R5- F12+ Sharpness a strong VF. The color is a decent chocolate steel typical of the variety. Just too many tiny marks for the grade. A light lamination line from the reverse rim to E of CENT. Ex. Col. Steve Ellsworth.



190. 1839 N-4 VF35 SILLY HEAD. Pretty walnut brown with smooth surfaces. Problem free.



191. 1839 N-14 R3 EF40 BOOBY HEAD. Light chocolate steel with hard, lustrous surfaces. Minor hairline scratch up from star one into field.



192. 1839 N-15 R6- F12 Medium tan to brown with a hard smooth surface. Very nice for the grade. Still very scarce. The diagnostics are sharp on both sides. Ex. EAC 2007:459.



193. 1842 N-1b R3 EF40 SMALL DATE 10 points sharper, very lightly cleaned and retoned to a slightly unnatural light olive color with reddish-tan at portions of the peripheries. Small rim disturbance at star 5, only trivial marks otherwise including a few barely noticeable rim bruises and some tiny ticks in the field near stars 4 and 5. E-MDS with the 2 lumps still faintly visible beneath the date. Despite the minor impairments, this makes a sharp and reasonably attractive example of the variety, the less common of the two small Dates. Ex. Tom Reynolds, 12/92.



194. 1843 N-12 R2 NGC MS61 BN PETITE HEAD SMALL LETTERS Lustrous slightly mottled mix of dark bluish steel and chocolate brown with lighter reddish brown toning faded down from mint color in protected areas. No notable contact marks, but a trio of dentils just left of the date that are not fully struck up help identify this cent. EDS. Die state a. The fine die lines are crisp and surfaces are semi PL. MS62.



195. 1845 N-7 R5 NGC AU DETAILS Sharpness XF45+. There is a nick on the rim above star 7, a couple hairline scratches under the wreath stem, and trivial marks on the face and fields. Medium brown and olive blend with a few specks of dark verdigris on otherwise smooth, attractive surfaces. EF40.



196. 1846 N-2e R2 VF25+ SMALL DATE Glossy, deep brown surfaces and quite attractive for the grade. A glass reveals some extremely faint pin scratches above Liberty's head, but the coin is smooth and problem free otherwise. Rare LDS (state e) with a reverse rim cud above ES IN STATES. Fewer than a dozen known for the die state. Accompanied by a Grellman card from 2007 calling it VF25+ and CC#6/6 for state e (a few others have come to light since.)



197. 1846 N-10 R4 NGC MS63 Pretty light chocolate with just traces of faded mint red framing the portrait. Virtually mark free with hard reflective surfaces. EDS state q. Ex. Jules Reiver.



198. 1846 N-23 R5 VF20 Ten points sharper. Chocolate with some evidence of old cleaning. Some scratches at the 4 of date.



199. 1846 N-26 R5 VF20 VF30 Very pretty light brown color and hard smooth surfaces. Some old scratches in obverse field K4-5.



200. 1847 N-1 R2 VF35 1847/1847. Nice brown. Probably recolored, but sharpness close to AU. Looks nice. And this lot is donated by Dennis Fuoss with 100% of proceeds going to EAC



201. 1847 N-7 VF30 EF40. Nice light brown with a hard smooth surface. A few slight scratches and small marks reduce the grade. But eye appeal is decent. This is from the mid state of these dies "b" with a single obverse rim break at star one and the line down from dentils near star seven sharp. CC#4 of this die state.



202. 1847 N-29 R3 NGC MS66 BN Frosty blue steel with deep mint red in much of the protected areas. Choice surfaces with attractive cartwheel luster, free of notable marks or detractors. MS64





203. 1848 N-1b R1 PCGS MS64RB BRAIDED HAIR From the Ted Naftzger collection and the single finest Newcomb -1. Fresh surfaces showing frosty mint red toned to steel and chocolate brown on the highpoints. Retains more than half its original color and the fields are aglow with active mint luster. Nice eye appeal and only a few tiny defects including some short, superficial hairlines off Liberty's chin and inside of star 10, a couple tiny ticks under the ear and miniscule mark on the reverse rim above OF. Die state b with the date repunching mostly lapped from the 18, but still showing on the 4. Overall an impressive red cent and the undisputed finest known N1 called MS63 and CC#1 in both the Noyes and Grellman censuses. Ex. Charles M. Williamd-Abe Kosoff & Abner Kreisberg (Numismatic Gallery) 11/14/1950:523-Willard C. Blaisdell 9/76 (via Del bland)-Ted Naftzger, Goldberg's 9/7/2009:829.



204. 1848 N-3 R2 AU55 Frosty medium tan. A pretty cent with just a trace of friction.



205. 1848 N-3c R2 EF45+ BRAIDED HAIR Sharpness AU50 with some frosty cartwheel luster on both sides. Mostly just a smooth, pleasing chocolate brown coin though the surfaces show a few minor defects. There are two little patches of reddish patination by star 8 and above C in CENT. M-LDS (c) with the die lines around the obverse rim faded away. Two small low spots (as struck) are seen within the reverse wreath. Quite sharply struck throughout and all told, a pleasing cent. Ex. CVM, FIXED Price List 10/1990.





206. 1848 N-4 R4 EF40 Re-punched date 1848/1848. Five points sharper. Lustrous tan with a nick on the chin. Removed from an NGC AU50 holder.



207. 1848 N-23 R3 MS60+ There is some light staining on Liberty's face and neck and a microscopic hairline scratch from star one across the portrait left of Liberty's ear. But the deductions are trivial compared to the eye appeal. Lustrous tan with splashes of original mint red. Surely among the top six examples.



208. 1848 N-25 R4 NGC AU58 Light chocolate and olive blend with incredibly microscopic porosity, only visible under a glass, that doesn't detract from the appeal. The notable marks include a small dig above the eye, and a mark on the rim above star 8. There is a small die break seen faintly extending from the leaf above O in ONE. EF45.



209. 1848 N-26 R5- VF30 Choice walnut brown with a hard glossy surface. Very attractive for the grade. The finest known is AU. this is likely among the top six examples.



210. 1848 N-27 R2 PCGS MS64 BN Lustrous light chocolate and tan with hints of mint red showing underneath and in the protected areas. The only identifying marks include a tiny nick behind the hair curls at the neck, and a few specks of verdigris only visible with a glass seen in the protected areas of the peripheral legends on the reverse. Shallow flaking seen above ONE, with several delicate die breaks seen over STATES OF AMERICA. The choice surfaces and toning are very attractive. MS60+



211. 1848 N-29 R3 MS60 Lustrous chocolate brown with delicate overtones of light bluish steel and hints of very faded mint color showing through in protected areas on the obverse. The only mark is a faint vertical hairline scratch in the field right of star 3. E-MDS, die state a. The strike is a bit soft on the hair at the ear, on the shoulder, and on the leaves under OF, as usual on this variety. Tied for CC#5. Ex. Doug Bird-R.S. Brown, Jr- 1999 EAC Sale 596



212. 1848 N-37 R4+ PCGS AU50 Chocolate brown and olive with dark verdigris in the protected areas as well as small spots at the neck, in front of the nose, the hair curl behind the neck, and star 5. There is a small scratch in the hair, another below CENT, and a small mark above ONE, minor marks and chatter otherwise. EF40.



213. 1849 N-4b R1 PCGS MS64+ BN BRAIDED HAIR Lovely chocolate brown surfaces with some mint red lingering in the details, especially on the reverse. Virtually flawless to the unaided eye, close inspection reveals just an extremely faint hairline on Liberty's neck and a tiny nick on the outer edge of the rim above U in UNITED. Well struck E-MDS with bold reverse die lines and a die crack from the highest leaf tip through the O in OF. A solid mint state example with great eye appeal thanks to the sharp strike and reflective luster. Comes with a nice provenance. Ex. M & G Auctions/Superior 6/2/2002:686-Dan Holmes.



214. 1849 N-7 R3 PCGS AU 58 Lustrous chocolate and olive brown blend. There are a handful of minor contact marks on the face and neck, and another near the rim by star 6. The surfaces are smooth and attractive. AU50+.



215. 1849 N-11f R1 EF40 BRAIDED HAIR A bit sharper, each side showing several little nicks, the more notable ones being on Liberty's bust above the lower curl, on the first date numeral, and a little cluster within stars 3-4. Otherwise, the surfaces are a pleasing, glossy medium brown. The real story here though is the extremely rare die state (f) with a pair of connected rim cud on the reverse from the ribbon tip to above the U. Just 5 state f examples are known and this one comes in at 4th best. A good opportunity for the late date aficionado. Ex. Shawn Yancey, EAC 2011 Bourse-Doug Durasoff, Goldberg's 1/25/15:734.



216. 1849 N-20 R1 MS60+ Chocolate steel with a couple splashes of mint red obverse and reverse. Sharply struck on a hard glossy planchet.



217. 1849 N-21 R4 NGC AU58 Medium brown and olive with tiny dark spots speckled across both sides. Many fine marks and light chatter seen across both sides, the more notable including a mark at the chin, one near the bust tip, and another above IB in LIBERTY. The surfaces are smooth and free of corrosion. AU50



218. 1849 N-24 R3+ VF25+ Light olive brown and tan. A hard smooth planchet. Very rare LDS die state c with rim cud at stars 12-13. One of only nine examples known in this die state.



219. 1849 N-24 R3+ NGC MS63 Lustrous sea green and tan with beautiful reflective surfaces. There is a tiny mark on the neck. Otherwise, virtually mark free. Second finest known of only two mint state examples known. EDS. Ex. Dan Holmes, M&G/Goldbergs 1/30/2011:376. MS63



220. 1850 N-1 R2 PCGS MS64 BN Glossy light olive brown and chocolate with overtones of frosty bluish steel. Traces of very faded mint color are peeking through in protected areas on the obverse. The surfaces are satiny and attractive, but not perfect. Tiny specks of carbon are scattered over both sides, especially around the date and bust tip, and there is a thin diagonal nick over the bust tip. Nicely struck EDS, die state a. The die lines at AMERIC are clear. Called MS60 and tied for CC#5 in the Noyes census, his photo #55122. Our grade is MS60, tied for CC#5 in the Grellman census. Ex. S. M. Koepfel 9/18/46-Ted Naftzger. MS60.





221. 1850 N-2c R1 NGC MS64BN BRAIDED HAIR Frosty chocolate brown and light olive surfaces that possess strong cartwheel luster and overall excellent eye appeal. Just the faintest trace of rub on the highpoints away from mint state and there are peeps of mint red around some of the reverse detail. Reasonably well struck and mostly free of marks and defects; two dull nicks on Liberty's jaw are the only ones to note. E-MDS (c) with strong die finishing lines on each side and a reverse die crack from TED to the rim. A pretty cent. MS62.



222. 1850 N-9 R2 PCGS MS64 RB CAC CERTIFIED Frosty nearly full original mint red GEM with stunning full cartwheel luster. The best identifying marks are a couple of tiny dark spots below the chin. Free of marks and detractors, absolutely choice all around. MS65.



223. 1850 N-12 R1 MS60+ Lustrous light brown rose and olive tan with some mint red reverse. LDS (b) with a hard, somewhat prooflike surface. Well struck.



224. 1850 N-14 PCGS MS65 Light chocolate with a hard lustrous surface. The slightest trace of red on the reverse. Very well struck from the earliest state of these dies. Only five examples of this variety known in mint state. This is the finest of the early die state.



225. 1851 N-15 R2 PCGS MS64 BN Lustrous light chocolate with some mint red on the reverse. There is a very light lamination line that runs from star two down to the rim under the five of the date. A pretty cent. Ex. Ted Naftzger, M&G/Goldberg's, 9/72009:1044.



226. 1851 N-21 R4 AU50+ Little wear with lustrous bluish steel surfaces. A small spot of oxidation at U of UNITED. Sharply struck from the rare early state of these dies. Third finest of the EDS. CC#10 for the variety



227. 1851 N-22 R4 PCGS MS64 BN Lustrous light steel brown with traces of mint red remaining on both sides. There is a small spot of slightly darker toning hidden in the dentils at star 3 and a collection of tiny ticks on the face with a single nick on the upright of the first 1 in the date. M-LDS, die state b late. The die lines and points around the portrait remain clear. MS62.

AMONG THE FINEST KNOWN 1851 N31a



228. 1851 N-31a R3 PCGS MS64 RB BRAIDED HAIR Highly lustrous and retains approximately 80% of its original color, only a portion of the devices having toned down to steel brown. An impressive and beautiful large cent that would easily qualify for an even higher grade if not for a few small obverse marks-these include a short, dull scratch between stars 6 & 7, two very fine hairlines inside and outside of stars 11 & 12, and a strike through line just beneath the outer hair bun. There are darker toning spots scattered about in the fields, but these are visually overwhelmed by the bright mint red and intense cartwheel luster. EDS, clearly showing the points at star 2 and the lapping through the central reverse has not yet appeared. Called MS66 and CC#1 by Noyes, MS64+ and CC#3 in Grellman's census. In either case, a wonderful coin and one of the very best known of the variety. EX. New Netherlands Coin Co. 6/27/62:617-Ted Naftzger. Goldberg's 9/7/2009:1071.





229. 1851 N-39a R3 PCGS MS65 BN **BRAIDED HAIR** An appealing mint state large cent with satiny medium and chocolate brown surfaces. Strong cartwheel luster illuminates underlying mint red at every turn and subtle violet overtones create nice eye appeal. Defects are fairly insignificant, but include a patch of darker, reddish toning at star 13 and some extremely light hairlines at the top and bottom of the reverse. Very early die state with all of the die lines and other die defects clear. Graded MS63 by both Noyes and Grellman; Noyes CC#3 and Grellman's CC#4. Ex. Stacks 5/20/75:600 (via C. Douglas Smith)-Ted Naftzger, Goldberg's 9/7/2009:1079.



230. 1851 N-43 R6- PCGS MS 65 RB Stunning, nearly full frosty mint red GEM with beautiful full cartwheel luster. The best identifying marks include a tiny dark spot under stars 8-9, a mark on the rim above the same stars, and another above star 7. Free of any notable detractors otherwise, with satiny surfaces the POP from the holder and grab your attention. MS64+.



231. 1852 N-1c R1 AU50 **BRAIDED HAIR** Very attractive chocolate brown surfaces with lots of frosty luster in the fields on both sides. The toning is even and the overall look pretty much ideal for the grade. Some tiny nicks on Liberty's cheek, but nary a mark otherwise. M-LDS (c) with the repunching faintly visible under the 1 only and the die cracks are fairly well advanced on the obverse.





232. 1852 N-5 VF30 BROADSTRUCK This came from the Eric P. Newman sale where described as damaged in an NGC holder. Looks Broadstruck to us. Medium brown with broad rims, mark free edges.



233. 1852 N-12 R1 PCGSMS64 Brown with bluish green overtones and just a touch of mint red. MDS.



234. 1852 N-22 MS60+ Faded mint red obverse. The reverse a mix of bluish steel and mint red. MDS, state c. Equivalent to old Newcomb 9. Ex. Wes Rasmussen, M&G/Superior 2/8/1998:396, Dan Holmes Lot 526, Eric Fix. Plated in Grellman.



235. 1853 N-9 R2 PCGS MS65 BN Lustrous chocolate brown and original mint red in the protected areas and underneath. There are small specks of dark verdigris seen on the reverse at N in ONE, a couple within the wreath, and above the last S in STATES. Free of notable marks and detractions otherwise with attractive, smooth surfaces. MS63.



236. 1854 N-3b R1 PCGS XF45 BRAIDED HAIR An attractive cent for the grade with original, slightly glossy olive and chocolate brown surfaces. There are a few very light hairlines within the reverse wreath and below AM, but nothing out of line for the grade level. A neat variety featuring a stray 4 punched into Liberty's lower curls. MDS.



237. 1854 N-30 R6+ VF20 Sharper but cleaned and recolored. A few scattered marks and some encrustation around NE of ONE. Still rave.



238. 1855 N-4 R1 MS62 UPRIGHT 5s. Bright mint red and steel. A couple abrasions in the obverse field K8. Good eye appeal.



239. 1855 N-5 R5- NGC MS62 BN UPRIGHT 55 Lustrous chocolate and olive brown with traces of verdigris seen on the edges and protected areas of both sides. The notable marks include small hairlines on the cheek, neck, and between stars 3 and 4. The surfaces are pleasing and toning attractive. Upright 55. AU55



240. 1855 N-9 R1 VF30+ KNOB ON EAR. At least 10 points sharper. Too many minor marks, but nice light brown Color. E-MDS state of the Knob.



241. 1855 N-9 R1 NGC MS63 BN RARE EDS KNOB ON EAR Lustrous light chocolate and olive blend with subtle hints of lighter tan showing underneath in some places. The identifying marks include dark spots seen in front of the bust tips, on A in STATES, and on I in AMERICA, with tiny specks of light verdigris seen at R in AMERICA and near the rim between the date and star 1. The surfaces are smooth with attractive toning and luster. Rare EDS, with the very beginning the "Knob" starting to form above the ear. MS60.



242. 1855 N-9 R1 NGC MS62 BN KNOB ON EAR SLANTING 5 Medium chocolate and olive blend with mint red luster showing underneath the reverse fields and protected areas. The best identifying mark is a small nick on the cheek, with a few more trivial marks above star 12 and one between ONE and CENT. Smooth, attractive surfaces. Knob on Ear variety, slanting 5. MS60.



243. 1855 N-12b R1 NGC MS64 BN UPRIGHT 5s Frosty deep brown with hints of mint red highlighting some of the details. Satiny fields, good cartwheel luster, and sharp detail without any trace of wear. A few very minor marks are present-on the rim just before star 3, between stars 10 & 11, and above the right upright of N in ONE, but none of these disturb the overall appearance to any meaningful degree. MDS (b) with the die lines at the inner curl having worn away and the fields slightly flowlines. A solid mint state cent with a nice, natural look.



244. 1856 N-1c VF20 Sharpness close to EF with some digs. Dark color. This appears to be die state c with the Single break above ST. Rare as such with maybe a half dozen known in this die state.



245. 1856 N-2f R1 NGC MS62 BN SLANTED 5 Frosty chocolate brown with subtle cartwheel luster engaging each side. Quite pleasing overall, there are just a few tiny marks to report-one above the ear, another on the rim outside of star 10 and just past the date, and a handful of other microscopic ticks in the fields. LDS, state f, with flowlined fields, obverse die cracks, and the reverse slightly sunken around UNITED STATES. There are also some low spots in and around ONE CENT which appear in the same place on many late state specimens. A nice cent with just the slightest wear on the highpoints.



246. 1856 N-2f R1 PCGS MS63BN SLANTED 5 Deep bluish steel brown with some reddish tan toning around the obverse peripheries and much of the reverse. Quite lustrous and the sharpness is mint state, but the color suggests this cent was likely dipped a while back and has since retoned. An attractive coin regardless and very clean surfaces. LDS, state f, with clear obverse die cracks and a weak UNITED STATES.



247. 1856 N-3 VF35 Pretty light brown to tan. Hard smooth surfaces. State g with the rim break at stars 12 & 13.



248. 1856 N-7 R2 PCGS MS64 UPRIGHT 5. Deep glossy chocolate brown splashed with original mint red. A great looking cent.



249. 1857 N-1 R1 MS60 LARGE DATE Frosty reddish brown. A few minor hairlines in the field. M-LDS.



250. 1857 N-4 R1 EF40 SMALL DATE. Light chocolate brown with a hard smooth surface. Better than average strike with the tip of the coronet sharp.



251. FABULOUS QUILT HAND MADE BY SUSAN ECKBERG. The panels feature a run of EAC Tee Shirt designs. All proceeds go to EAC. THANK YOU SUSAN!

TERMS OF SALE

1. This is a private sale. Participation is by invitation only and is limited to members of The Early American Coppers Club or invited guests. The auctioneer reserves the right to refuse to honor any bid which, at his sole discretion, he feels is not submitted in good faith. The auctioneer may withdraw any lot, without prior notice, for any reason whatsoever.
2. The highest bidder acknowledged by the auctioneer shall be the buyer. In case of dispute the auctioneer may at his sole discretion reopen a lot. In all cases the auctioneer's decision shall be final and binding on bidders.
3. All sales are payable in U.S. funds immediately upon receipt of invoice unless other arrangements have been made prior to the sale. Lots delivered in state of sale are subject to all applicable state and local taxes unless appropriate permits are on file with us.
4. Postage will be added to the invoice of all successful mail bidders.
5. A 10% buyers fee will be added to all invoices.
6. Please keep in mind this is not an approval sale. All sales are considered final. Sales to the floor may not be returned for any reason save authenticity. Sales to mail bidders are final unless lot proves to have been mis-described.
7. Lots will be available for viewing by appointment.
8. Mail bids or phone bids will be accepted up through the day of the sale. All bids will be reduced. Lots will open at one increment above second highest mail bidder. Bidding will proceed as competition dictates with the lot either selling to the floor or to the mail bidder at one increment above the second highest bid.
9. Consignor may bid or place a reserve bid on their own coins. Any coins repurchased by a consignor will be announced as a pass. Principals of the auction firm may consign or may bid on coins in the sale.

MAIL BIDS

Please mail all bids to:
M & G Auction
P.O. Box 6400
Austin, TX 78762
Phone 405 226-5072
Email: cmccawley@aol.com

Mail Bid Form

I hereby authorize M & G AUCTIONS to execute the following bid(s) at the auction to be held May 2ND 2015.

Please buy the following lot(s) for me at the price(s) not exceeding those shown. The bid(s) is made subject to the "Terms of Sale", and I agree to remit promptly on receipt of invoice or notification that the bid(s) is successful. This signed bid sheet constitutes an agreement between me and M & G AUCTIONS.

NAME _____

ADDRESS _____

CITY _____ STATE _____ ZIP CODE _____

SIGNATURE _____ PHONE () _____

EAC# _____

IF NECESSARY, PLEASE INCREASE MY BID(S) BY:

10% 20% 30% Other _____ %

SPECIAL INSTRUCTIONS:

Please Mail Bids To: M & G Auction • P.O. Box 6400, Austin, TX 78762 • Phone 405 226-5072
Email bids up to the day of the sale to Chris at cmccawley@aol.com





COPYRIGHT © 2015

P.O. BOX 6400
AUSTIN, TX 78762