



Kevin Vinton  
presents

# The 2016 EAC Convention Sale

April 9, 2016



# Kevin Vinton

presents

the

# 2016 EAC Sale

April 9, 2016, 7:30 p.m. at the  
Westin Charlotte  
601 S. College St.  
Charlotte, NC 28202

719-567-8900

Welcome to the 2016 EAC Convention Sale.

The sale will be held Saturday night, April 9 at 7:30 p.m., at the Westin Hotel  
601 S. College St., Charlotte, NC 28202

Lot viewing will be held at the Early American Coppers Club Convention April 6-9 on the bourse  
floor.

Mail bids should be directed to Kevin's address: P.O. Box 771, Danbury, CT 06813-0771.

Email bids can be directed to [kevin@indeetlib.com](mailto:kevin@indeetlib.com) up through the day of the sale.

Fax bids can be received at the hotel

April 6-9 at 719-576-4450.

Feel free to call Kevin (203-305-4710) to discuss any coin in the sale.

***This is a private sale, you must be a member of EAC to bid-please read our terms of sale before bidding.***

*Thanks to everyone who consigned items. Over 700 coins were submitted for this year's sale!*

COLONIALS



1. 1652 Massachusetts Pine Tree Shilling Noe-25 R5 VF30. Small Planchet type. 70.2 grains. How about a silver coin to kick off the EAC Sale? An appealing piece of Massachusetts silver with natural gray tone and a well-balanced strike on a good quality flan. Sharpness high in the VF range, the only minor defect to note is some very light graffiti at 6 o'clock on the reverse, but it is very thin, blended into the toning, and not all that distracting. All detail bold save for a bit of weakness at D in AN DO where the reverse die was beginning to fail. An excellent example of this fairly scarce Noe number as well as an ideal type coin.



2. 1720-A French Colonies 6 Deniers Breen-298 VF25. Paris Mint. Crowned Arms on Reverse. A scarce, *Red Book* listed type that was struck in France and exported for use in their North American colonies. This is a strong example with attractive light brown surfaces. Not much in the way of defects to report, just some very light granularity natural to the planchet, but no post-strike damage. Bold, well-centered detail.



3. 1787 Connecticut Copper Miller 3.4-F.2 R2 VG10. 149.7 grains. Sometimes referred to as the "ET LIR" variety due to the weak bottom of the B. Fine sharpness and attractive light to medium brown color. No damage, just some of the usual planchet flaws and microgranularity. The date and legends are all there. Late die state with some noticeable swelling on the reverse.



4. 1785 Connecticut Copper Miller 4.1-F.4 R1 F12. "African Head." 125.1 grains. A popular and distinctive state copper. Nearly VF detail, the centers stronger than the peripheries as usual, but most of the legends can be made out and more than half the date. Dark chocolate recesses with tan highpoints, the surfaces a bit granular but not disturbingly so. Small curved planchet clip at 8 o'clock. The "African Head" portrait is nicely displayed.





5. 1787 Connecticut Copper Miller 33.6-KK R2 VF20. 147.6 grains. The "Triple Ribbon Ends" variety due to hub doubling on the obverse effigy. A solid mid-grade example of the dies as well as the overall Draped Bust Left type. Medium-brown surfaces that are decently glossy and mark-free. A glass reveals some trivial roughness on the obverse, but this is a good quality Connecticut overall. *Ex Gary Smith.*

6. Pair of Connecticut Coppers. Includes 1787 Miller 4-L R1 F15. The "Horned Bust" variety. 106.8 grains. Middle die state. Sharpness VF35 but lightly corroded. Together with 1787 Miller 32.4-X.5 R5 VG8. 127.5 grains. A couple points sharper, the surfaces a tad granular but still glossy. Straight clipped planchet. A tough Miller number. Lot of 2 coins.



7. 1787 New Jersey Copper Maris 56-n R1 VF20. "Camel Head." Struck over a Connecticut Copper and shows enough undertype to attribute the host coin as a 1787 Miller 5-B (a rare R6 variety). Lovely tan-brown surfaces without any notable flaws. A premium quality example and an overall fascinating early copper, as many Camel Heads are. In an NGC VF20 holder and includes a Grellman card marked VF20.



8. 1787 Fugio Copper Newman 19-Z R5 VG10. Raised Rim. 147.7 grains. Glossy tan surfaces with well above average eye appeal for the variety and grade. Only minor defects including a few old, thin reverse cuts and an extremely light bend to the planchet. Full date and legends on the obverse. The "Raised Rim" feature on the label and large, hand-cut letters of WE ARE ONE that characterize the reverse die are all clear.



9. '1783' Washington & Independence Token Baker-4B R3 VF25. Small Military Bust. Engrailed Edge. Glossy medium-brown surfaces. No marks and quite nice for the grade. The Small Military Bust is the scarcer of the two bust sizes for the type and the Engrailed Edge is the scarcer of the two edge types for the variety. In an ICG VF25 holder.



10. 1793 Washington Ship Halfpenny Baker-18 R3 VF25. An impressive and popular Washington piece. VF35 sharpness with a few small patches of reddish corrosion on the obverse. Otherwise glossy deep-brown surfaces with overall positive eye appeal



11. 1783 Georgius Triumpho Copper Baker-7 R3 VG10. An intriguing and enigmatic token. Obverse bust of George III though some have suggested this was intended to represent George Washington, it was just that the coiners had no image of him after which to model the die. Interesting reverse imagery including a fence shielding Britannia that is made of 13 bars and 4 fleur-de-lis at the corners – presumably representing the American colonies' resistance to British forces with aid from France. Punch linked to the 1783 Nova Constellatio coppers which were struck around 1785 so the timing would lend itself to these pieces referencing the recent victory of Washington and the American colonies in the Revolutionary War. This is a decent example with Fine sharpness and glossy dark brown surfaces with light underlying roughness. All of the major detail is clear.



13. 1739 Admiral Vernon Medal Adams PBvi 20-II R7 XF40. Porto Bello. 39mm, 13.24 grams. Smooth, deep-brown surfaces with brassy-orange highlights on some details. A sharp and attractive piece with little wear. The planchet is slightly bent, but this is likely an effect of the minting process and not post-strike damage. One of the rarer die varieties as recorded by Adams.



14. (c. 1880) Struck Copy of a Bar Cent MS63. A fascinating and very rare struck copy. While nothing is definitively known about the maker, a handful of different examples from these same dies have appeared for sale over the years, most recently two ex Ringo pieces in the January 2011 Stack's Americana Sale (cf. Stack's 1/27/11:6091,6092). This piece is lovely and well made, perhaps the finest known. Unworn with prooflike luster and colorful iridescent tone. A great study coin whose origin might be discoverable.



12. 1739 Admiral Vernon Medal Adams PBv 32-X R6 VF30. Porto Bello. 38mm, 12.49 grams. The Admiral Vernon medals have long held the fascination of American numismatists and their inclusion in the Betts catalog has made them of great interest to U.S. colonial collectors. This is a pleasant, lightly worn example. Medium olive-brown surfaces with some natural brassy highlights. Mostly problem-free, just a few thin scratches in the right obverse field and some metal missing from the obverse rim at 12 o'clock, perhaps where a mount was removed. *Ex Gary Smith.*

HALF CENTS

Terminal Die State 1793 Cohen 1



15. 1793 C-1 R3+ G5. A fairly well-detailed example, the sharpness F12 or so though some definition is weakened by light to moderate porosity affecting both sides. Mottled chocolate and darker steel toning with orange-brown color on some of the high-points. There are a few very small patches of black, sealy verdigris on the obverse, but no major marks. Slightly glossy and the eye appeal isn't too bad despite the rough surfaces. The edge lettering is weak in a few places, but mostly readable. A decent '93 Half Cent, but especially notable as the rare terminal state of the dies, Manley 3.0, with a strong rim cud from 1 to 3 o'clock on the reverse. 102.5 grains.



16. 1793 C-2 Electrotpe Copy VF20. Slightly grainy surfaces and has some light verdigris on the reverse. Edge carefully filed down to remove the seam. Even medium-brown color and overall a decently executed electrotpe.

Very Rare 1794 Cohen 4b



17. 1794 C-4b R6+ G6. Large Edge Letters. A key half cent variety and this is a more than respectable specimen. Sharpness VG10 and generally strong for that grade, the date, legends, and major detail are all complete and bold save for some weakness at TY and LIBERTY and at the reverse fraction. Rather dark coffee-brown surfaces with light, even granularity and traces of harmless verdigris on the reverse. Fairly pleasant appearance overall thanks to sound rims and a lack of distracting surface marks. The all-important edge lettering is very strong. 100.8 grains.

Nice Quality 1794 Cohen 7



18. 1794 C-7 R5 VF20. Solid VF25 detail and the surfaces are pleasing and rather glossy. Lightly cleaned a while ago and has since retoned to an attractive tan-brown and light steel with some darker toning at the upper obverse and lower reverse. No corrosion or damage, just some extremely light, toned over hairlines in the fields and a few minor circulation marks. Complete edge lettering. MDS. Manley 2.0. A premium example of this challenging die pair. 104.0 grains. *Ex Doug Bird FUN 2005 - Ray Rouse*



19. 1794 C-7 R5 AG3. Here's an unusual one. Struck on a severely flawed planchet, so much so the coin split along one of the striations and now comes clean apart into two pieces when taken out of its plastic capsule. It appears the coin did not break apart all that recently and it's remarkable the two pieces survived together. A fascinating item and great example of the crude materials our fledgling mint made do with. Oh, and it's a C-7 to boot. *Ex 2008 EAC Sale, lot 35 – Dan Trollan.*



22. 1795 C-1 R2 VG7+. Lettered Edge. Choice medium-brown surfaces and strong, complete detail for the grade. Essentially mark-free – there is a tiny rim bump above AT in STATES if you really want to nitpick. The sort of ideal look that is exceedingly difficult to find in early half cents. LDS, Manley 2.0. In a PCGS edge-view VG8 holder with CAC approval.



20. 1794 C-8 R5 VG10. Another scarce half cent. Sharpness of at least a 25 coin, the surfaces smooth on the highest points of the design but microgranular everywhere else. Dark steel-brown toning and a bit glossy. Easy on the eyes despite the roughness as there are absolutely no other marks or flaws that demand attention. Good quality rims and the edge lettering is strong. LDS, Manley 2.0. 101.4 grains. *Ex M&G 9/13/1997, lot 4 – Col. Steve Ellsworth.*



23. 1795 C-2a R3 G5. Lettered Edge, Punctuated Date. A point sharper with some light hairlines crisscrossing each side. Nice two-tone color and generally good surfaces for the grade with just trace microgranularity in the fields. Small curved planchet clip at 3 o'clock. LDS, Manley 3.0 with clashmarks and swelling on the reverse. 107.9 grains.



21. 1794 C-9 R2 VG8. Sharpness close to F12, the obverse fully of that grade while the reverse is a bit weaker as usual. Decent steel brown and chocolate surfaces. A few minor scratches and very light granularity on the obverse. The reverse a bit rougher but still not too bad. Bold date, the legends fully readable if a little faint at the right side of the reverse. Edge lettering complete and strong. LDS, Manley 1.0. Comes with a Grellman card marked 107. *Ex Superior 9 2008, lot 5 – Dan Trollan.*



24. 1795 C-4 R3 VG10. Plain Edge. An attractive, smooth-surfaced half cent. Glossy light brown with a patch of darker toning at 10 o'clock on the obverse as well as the rim and opposing reverse of that area. The toning pattern suggests a recoloring, but it was pretty well done. Complete date and legends. LDS, Manley 2.0 and the dies are slightly misaligned. 81.6 grains. *Ex 1996 EAC Sale, lot 59 – Mike Packard.*





25. 1795 C-6a R2 F15. **Double Struck.** Thin Planchet, Plain Edge. A neat piece that shows evidence of two strikes on each side. The coin rotated about 30 degrees CCW in between strikes and each impression is centered on the planchet. On the obverse, the date from the first strike shows at 5 o'clock and the LI of LIBERTY can be seen on the cap of the second strike. Nice deep-brown surfaces with subtle bluish overtones and no problems to report. LDS, Manley 2.0. In an NGC VF30 holder. *Ex Eric Newman/R. Tettenhorst, the "Missouri Curio Cabinet", Heritage 11/8/2015, lot 29003.*



27. 1797 C-1 R2 VF20. 1 Above 1. Sharpness VF35+ with some scratches on the right side of the obverse. These are mostly thin and toned-over, but there is a thicker one with some orange color still showing within above Liberty's eye and into the field. A handful of more trivial marks and scratches elsewhere, but the surfaces in general are an attractive, original medium brown with positive eye appeal. Very late die state, Manley 5.0, and this is a sharp enough specimen to fully appreciate the extent of the die cracks and die failure. 83.1 grains.

**Rare Heavy Planchet Cohen 6b**



26. 1795 C-6b R5+ G6. **Heavy Planchet.** Plain Edge. Near VG and a very nice example for the grade, a short scratch on the reverse notwithstanding. Smooth, light brown surfaces with just a touch of micro-porosity in the fields which is really of no consequence. The date and legends are fully visible though the strike was a bit weak at the lower obverse and upper reverse. A pleasing representative of this rare variant and a no-question "b" considering the planchet weighs a hefty 118.7 grains. *Ex Howard Barron 11/17/07 – Bill Eckberg 6/26/08 – Howard Barron.*



28. 1797 C-3a R3 F12. **Low Head, Plain Edge.** Only lightly worn, the sharpness easily XF45, but light to moderate pitting affects portions of the obverse and the majority of the reverse. A few pits on each side contain tiny spots of verdigris. There is minor evidence of tooling in the fields to minimize the corrosion and the toning is a decent looking, but recolored medium reddish-brown. Perhaps struck on cut-down, spoiled large cent, as many of this variety were, and this could explain the planchet quality, but no undertype is apparent. Still, a very sharp example of the popular Low Head type. 82.4 grains.

Pleasing 1802/0 Half Cent



29. 1797 C-3b R4 G5. Low Head, Lettered Edge. Near Fine sharpness. Finely granular under a glossy, medium brown patina with some orange highlights and faint hairlines from a light cleaning. Clear date, the legends all readable though a bit weak in places on the reverse. The edge lettering complete and well-impressed. Not bad at all for a lower grade example of this scarce and intriguing sub-variety. LDS, Manley 3.0. 85.0 grains. Includes a Grellman card as 10/5. *Ex Shawn Yancey 1/2001 – Bob Kebler.*



30. 1800 C-1 R1 XF40. Glossy medium brown surfaces and only a few trivial contact marks to be found. There are minute traces of orange-red color around the portrait and at the central reverse which suggest an old cleaning, but there are no hairlines and the toning is natural-looking and attractive. M-LDS, Manley 4.0, with rim crumbling and lapped detail on the obverse.



31. **Pair of Double Struck Half Cents. 1800 & 1807.** Includes an 1800 C-1 in G5 with a double struck obverse. Both strikes were centered and the planchet rotated approximately 25 degrees CCW in between strikes. Evidence of the first strike is seen at Liberty's cheek and forehead. Glossy brown surfaces, the only flaw is a tiny punch mark at the fraction. Together with an 1807 C-1 in G4 with a remarkably similar double struck obverse. This one rotated about 15 degrees CCW in between strikes and shows slightly stronger remnants of the first strike in the same places – at Liberty's cheek, forehead, and upper waves of the hair. This coin was also a reverse brockage maker and shows swelling on the reverse opposite the highest points of the design from the second strike of the obverse. Sharpness VG7 with some reverse nicks. A neat pair. The 1807 is *ex Don Valenziano 6/19/1989 – Davy Collection, Goldberg's 9/4/2011, lot 339.*

32. 1802/0 C-2 R3 F15. An attractive 1802 half cent with close to VF25 detail. Glossy chocolate brown surfaces and not even a hint of corrosion or verdigris. Requires a deduction in grade for some old marks on the reverse including a dull scratch from the A in STATES down to the U and a small dent above the CE in CENT which caused a slight bulge on the obverse opposite it. LDS, Manley 5.0, with some rim cud at the lower reverse and evidence of die rust at the peripheries. *Ex Philip M. Showers, Stack's 1969 (privately) – Willis Harrington DuPout – Fred S. Werner 2/1976 – Superior 2/1976 – Joe Flynn & Sons Rare Coins 4/20/1976 – R. Tettenhorst (Missouri Cabinet) – Goldberg's Sale 85, lot 61.*



33. 1803 C-2 R4 G4. A fairly glossy, medium brown example of this scarce variety, the toughest of the date. A couple points sharper than the assigned grade, but there are some fine hairlines on each side – horizontal on the obverse and vertical on the reverse. There are also a few dents on the left side of the reverse which caused a subtle wave to the planchet. E-MDS, Manley 3.0, with noticeable reverse die cracks, but no cuds.



36. 1803 C-3 R2 VF20. Sharpness VF30 or a bit better, but the surfaces are rather dark and matte from extremely fine granularity on both sides. The obverse appears smoother but was lightly bur-nished. Still a fairly strong 1803 – a date that becomes quite scarce in higher grades. MDS, Manley 3.0.



34. 1803 C-2 R4 AG3. G+ detail, the surfaces steel brown with granular fields and hairlined devices. Not the prettiest coin, but a clear example of the very rare intermediate die state, Manley 5.0, with the cud only having broken out above TAT in STATES.



37. 1804 C-4 R5 VG7. Crosslet 4, Stems. Chocolate brown sur-faces and quite pleasing for the grade and variety. A glass doesn't reveal any notable marks, just a touch of underlying granularity in the fields, but nothing out of line for a VG coin. An elusive and condition sensitive die pair, somewhat overshadowed by the other "Low 4" variety, C-2, but still a rarity in its own right. LDS, Manley 3.0. In an NGC F12 holder and the attribution is noted on the label.



35. 1803 C-2 R4 VG8. A third distinct die state of the 1803 C-2 half cent. This example with the full cud over STAT on the reverse, Manley 7.0. Technically the sharpness is XF if not better, but the surfaces are partially eroded from ground burial. Mossy-green patina as seen on many ancient Roman bronzes. Some gloss remains where not affected by pitting and it is clear this coin didn't circulate much before being lost to the dirt. Upper reverse fairly smooth and the cud is very well defined.



38. 1804 C-5 R4 F15. Spiked Chin. Attractive medium-brown surfaces and sharpness that is close to VF. There are many thin scratches and tiny nicks on each side, but none are individually severe and most require a glass to see. The arm's length eye appeal is quite nice. LDS, Manley 6.0.



39. 1804 C-6 R2 VF30. Spiked Chin. Dusky, original surfaces with bluish medium brown toning and lighter tan highpoints. No marks or flaws worthy of note and this is an attractive half cent for the grade. EDS, Manley 2.0. In a PCGS XF40 holder.



42. 1804 C-6 R2 VF35. Spiked Chin. Smooth, glossy surfaces. Somewhat mottled color, perhaps recovering from an old cleaning but attractive nonetheless. Close inspection reveals some microscopically thin hairlines on the obverse and a few other trivial marks. A sharp example of the die state, Manley 8.0.



40. 1804 C-6 R2 XF45+. Spiked Chin. Glossy chestnut and medium brown surfaces with traces of frosty luster lingering in the legends. Excellent eye appeal and only a few trivial marks on the reverse including some light scrapes on the lower wreath detail and the R and last A of AMERICA. Also a small nick above the A in HALF but none of these marks are distracting in the least. E-MDS, Manley 2.0 late. In a PCGS AU53 holder.



43. 1804 C-6 R2 VF30. Spiked Chin. Sharp XF45 detail and glossy brown surfaces that are attractive and appear problem-free at first glance. There is, however, some light, old graffiti in the obverse fields, though it's hardly visible at most viewing angles. Regardless, this is an excellent representative of an impressive late die state, Manley 11.0, with the cud over AMERICA completely broken out.



41. 1804 C-6 R2 VF20+. Spiked Chin. Close to VF25 and with nice, even medium brown color. Some minor contact marks on the obverse which are not out of line for the grade. A rare middle die state of this fascinating variety, Manley 4.5 late, with the cud above ME still retained but barely hanging on.



44. 1804 C-6 R2 F12. Spiked Chin. An even later die state, Manley 12.0, with the small area between the two cracks off of the O in OF slightly raised as a retained cud. Glossy chocolate brown surfaces and fairly attractive for the grade, there are just a few little peck marks on each side. *Ex Mike Packard.*



45. 1804 C-7 R4 F12. Spiked Chin. Glossy medium brown and tan. Great eye appeal for the grade despite some minor circulation marks on each side which include a few tiny rim ticks, a pair of very light scratches on the neck, and some miniscule nicks in the reverse fields. Early die state, Manley 1.0, with an uncracked reverse. A tough variety that's not easy to locate in pleasant middle grades. Here's a good opportunity to obtain one without the exorbitant price tag of a VF or better coin.



48. 1804 C-9 R2 VG7. Crosslet 4. Stems. Slightly sharper with a few rim bumps and trace underlying roughness. Glossy steel-brown patina, clean fields, and an overall decent look for the grade. LDS, Manley 4.0, with a cud atop RTY.



46. 1804 C-8 R1 VF30+. Spiked Chin. Original, medium brown surfaces that are smooth, problem-free, and quite pleasing. Only tiny circulation marks commensurate with the grade. An ideal mid-grade example to represent the "Spiked Chin" *Red Book* variety. M-LDS, Manley 4.0 early. In an NGC XF40 holder with CAC approval.



49. 1804 C-10 R1 XF40. Crosslet 4. Stems. Sharpness AU55 with just the barest trace of rub on the highpoints. Lightly cleaned, the obverse mostly retoned to steel brown and light olive while the reverse retains quite a bit of unnatural orange color. There are some extremely light hairlines visible under a glass, but also traces of mint luster. MDS, Manley 2.0 late. *Ex R. Tettenhorst*.



47. 1804 C-8 R1 XF40. Spiked Chin. A lovely XF example of the Spiked Chin type and late state of the variety. Glossy medium brown surfaces with warm tan brown toning at the lower obverse and right side of the reverse. Only trivial marks, a dull and very short scratch before the chin is the only one to note and even it is minor. LDS, Manley 6.0, with the strong retained eud above LIBE. In a PCGS XF45 holder.



50. 1804 C-10 R1 AU50. Crosslet 4. Stems. A sharp, steely brown half cent with a goodly amount of frosty cartwheel luster on both sides, particularly the reverse. Original with a dusty look to the surfaces – this piece would likely benefit from a light brushing if you so choose. Only microscopic marks, none worthy of individual mention. Fairly late die state, Manley 3.0, with strong flowlines, most of the dentils worn away, and evidence of die rust in the obverse fields. In a PCGS AU55 holder and the attribution is noted on the label.

1805 C-3 ex Cohen



51. 1804 C-11 R2 F15+. Plain 4, Stems. Not overly scarce as a die pair, but this is the only variety to represent the Plain 4, Stems *Red Book* variety and is always in high demand as such. Sharpness close to VF and the surfaces are a nice, original medium brown, there are just a few thin scratches on the portrait and around LIBERTY, as well as a couple more in the reverse fields. M-LDS, Manley 2.0, with noticeable swelling at the central reverse.



54. 1805 C-3 R4 VG7. Small 5, Stems. Sharpness VG10 or a bit better. Glossy deep brown surfaces with some lighter toning on some of the detail. No corrosion or verdigris, but there are several old scratches on the reverse within the wreath and the throughout the legends on the left side of the coin. The obverse is much cleaner with only miniscule contact marks. Not perfect, but a very worthwhile example of the scarce "Small 5, Stems" *Red Book* variety. Ex Roger S. Cohen, Jr., *Superior* 2/2/1992, lot 222 – Mike Packard.



52. 1804 C-13 R1 XF45. Plain 4, Stemless. Very attractive medium brown to steel surfaces with some mint frost in the peripheral flowlines. A few miniscule nicks, but otherwise high quality and silky smooth. A bit softy struck at the upper left obverse and opposing reverse, elsewhere bold. EDS, Manley 1.0. Ex 1984 EAC Sale, lot 429 – Mike Packard.



55. 1806 C-1 R1 AU55. Small 6, Stemless. Frosty light chocolate and tan brown mottled with some streaks of darker toning. Possesses a nice, original appearance and there is decent cartwheel luster on each side. No marks worthy of note. MDS, Manley 2.0, and the dies are rotated 20 degrees CCW. In an NGC MS61BN holder.



53. 1805 C-1 R1 VF30. Small 5, Stemless. A nicely struck piece from a fairly early state of the dies, Manley 1.0 late. Each side void of notable marks and the eye appeal is quite nice. Gently cleaned long ago but there are no hairlines and the surfaces have almost fully retoned to a light olive brown and steel with some subtle blue-green overtones. Ex Elmer Firkenbender 8/14/2005 – COI Steve Ellsworth 10/2005 – Bob Kebler.



56. 1806 C-2 R4 VG7. Small 6, Stems. Close to VG10 detail but lightly granular and there are few scratches on the left side of the reverse. Decent color, chocolate brown with darker brown recesses. The date and legends are complete and overall this is not too bad an example of this tough variety. MDS, Manley 2.0.

57. Pair of Draped Bust Half Cents, 1806 Small 6, Stems & 1808/7. Both are scarce *Red Book* varieties. Includes 1806 C-2 R4 AG3. F12 detail but large patches of light to moderate pitting on both sides, heavier on the obverse, and orange color from being cleaned. Complete date and legends. Together with an 1808/7 C-2 R3 G4. Sharpness VG8 with some scrapes across the obverse. Otherwise glossy medium brown surfaces and the overdate is clear. Lot of 2 coins.



58. 1807 C-1 R1 AU50. Frosty surfaces with rich medium brown color and tan toning in some of the protected areas where the mint red was last to fade. Flowline luster covers both sides and the eye appeal is excellent. Only trivial marks including a few on Liberty's neck and cheek and one behind the lower curls – none of which are concerning. The usual late die state, Manley 3.0, with flowlined fields and weak peripheral detail. In a PCGS AU55 holder.



59. 1808/7 C-2 R3 VG7. A point sharper, the surfaces are medium-brown and decent with just a touch of granularity in the fields. Rare E-MDS, Manley 2.0 late, displaying a strong crack through the tops of ERTY and the area above that crack is slightly sunken. All the major detail, including the overdate, is clear. *Ex CVM – Wally Gilligan, Bowers & Merena 5/27/1994, lot 122 – Dr. Wallace Lee, Superior 5/25/2003, lot 250.*



60. 1808/7 C-2 R3 G4+. G5 detail and a pretty nice coin for the grade. Some traces of orange color remain from an old cleaning, but the majority of the toning is a natural medium brown and steel. Smooth surfaces without any notable marks. The bottoms of the date digits are worn, but the overdate feature is visible. EDS, Manley 1.0.



61. 1808 C-3 R1 VG10. Double Struck. A neat piece with really nice eye appeal in terms of both the surfaces and the error. Double struck off center, the first strike was off the planchet by about 20% toward 7 o'clock while the second strike was well centered. Clear undertype from the initial strike at the center and left side of both the obverse and reverse. Traces of the dentils from the off center strike can be seen in the right obverse field. Glossy brown surfaces with no problems other than some tiny spots of old verdigris on the reverse. LDS, reverse rotated about 15 degrees CW. It's interesting to note that this coin is a virtual twin in all respects to lot 243 in the Davy error sale (Goldberg's 9 2010) with the exact same orientation of the two strikes and same die state.



62. 1809 C-1 R4 AG3. Well-worn, the detail perhaps more like G4, but some definition is weakened by light underlying granularity. Perfectly acceptable for a lower grade example though and any roughness is well hidden by a fairly glossy, two-tone brown patina. MDS, Manley 2.0. The key to a set of 1809 half cent die varieties. *Ex an Atlanta coin show 5/16/1981 – Carvin Goodridge, Goldberg's 9/2012, lot 243.*



65. 1809/6 C-5 R1 VF35. A well-struck, early die state piece, Manley 1.0, with bold repunching at the date and crisp borders. Even light brown toning, the surfaces smooth and absent any distracting marks or blemishes. An interesting variety and this is a premium example for the grade.

**Sharp 1811 4 Star Break**



63. 1809 C-2 R3 VF30. Medium to steel brown surfaces that are glossy and very attractive. No corrosion, just a few minor marks including a pair of tiny nicks above the A in HALF and a couple of short, toned over serapes above TE in STATES. Later die state, Manley 4.0, and the reverse is slightly misaligned to 2 o'clock allowing for the rim cud just past 9 o'clock to be very bold. An excellent example of this uncommon die variety.



66. 1811 C-1 R4 VF20+. Wide Date. Easily the most dramatic and popular die state of the half cent series and this is a very strong example. Detail of a solid 35 coin, the surfaces glossy and toned an attractive medium-brown. No corrosion, but a glass reveals myriad tiny marks and scratches in the fields, most notably on Liberty's neck and in the reverse fields. There are also a pair of short scratches on the obverse rim. Most of these impairments are thin, toned over, and only come to light under magnification. The arm's length eye appeal is truly impressive. TDS, Manley 5.0, with the large cud break spanning the first 4 stars.



64. 1809 C-3 R1 XF45. Very sharp, not far from mint state detail, and at a quick glance this appears to be a nice UNC. Close inspection reveals the red surrounding some details on the obverse is left over from an old cleaning and not original mint color. Still an attractive coin without any noticeable hairlines and some mint luster remaining. MDS, Manley 1.0 late. *Ex R. Tettenhorst.*





67. 1811 C-1 R4 VG7. Wide Date. Above average quality for a 4 Star Break in this grade. Sharpness a bit higher in the VG range, the surfaces show some minor granularity in the fields and a few marks, the only notable one being a dull scratch at stars 9-11. Pleasing chocolate brown color with some darker toning in the protected areas. TDS, Manley 5.0. In an NGC VG10 holder. *Ex Bob Hilt Collection, Heritage 4/2015, lot 3068.*



69. 1811 C-2 R3 F12. Close Date. Sharpness just about VF20, the surfaces have a somewhat rough appearance under magnification – a combination of myriad contact marks and some patches of minor porosity. Rather dark toning, but still brown, and the fields are contrasted by lighter toning on some of the devices. Despite the imperfections, this is still a respectable 1811 half cent. E-MDS. Manley 1.0, without any evidence of the obverse clashmarks. *Ex Shawn Yancey – COL Steve Ellsworth.*

**Choice 1811 Cohen 2**



70. 1811 C-2 R3 VG10+. Close Date. Glossy surfaces with light olive brown and steel toning. Solid Fine sharpness but requires a slight deduction for a pair of thin scratches on the reverse. An attractive example. MDS, Manley 2.0, with fine clashmarks on the obverse. *Ex Gary Ruttenberg, M&G 8/17/1996, lot 41 – Dan Demeo.*



68. 1811 C-2 R3 VF25+. Close Date. Lovely chocolate and olive brown surfaces that are glossy and essentially mark-free. A little bit of subtle reddish toning at the central reverse, but otherwise uniform color. Well-struck with just light, even wear. No flaws are readily apparent, but if you really scrutinize you'll notice a tiny spot of dark toning in the field by star 4 and a trivial rim bump over the M in AMERICA. LDS, Manley 3.0 early, with clashmarks above the last digit of the date. An ideal example of this tough date that should please even the fussiest among us. *Ex Mike Demling.*



71. 1825 C-1 R3 XF45. A sharp example with reddish-brown and olive toning as well as some splashes of darker color at Liberty's neck and across the reverse. Quite glossy, the surfaces possibly coated with a very thin layer of lacquer or similar substance. Fairly early die state and well-struck, Manley 2.0 early with the die crack faintly visible from Liberty's ear down to the hair curl on the neck. Dies rotated just about 10 degrees CW. In an NGC AU55 holder.



72. 1825 C-1 R3 VF35. Detail near AU but appears to have been lightly whizzed as there is subtle cartwheel luster that seems artificial. No hairlines though or signs of any metal being moved and whatever was done, was done carefully. Obverse retoned to a colorful light olive with blue, violet, and orange overtones while the reverse is still mostly bright orange. Not original, but still sort of attractive. Well-struck MDS, Manley 2.0, and the dies are rotated 135 degrees CW. The curious edge lump seen on many 1825 half cents is present on the edge off the left side of star 13.



74. 1825 C-2 R1 AU58+. A lovely 1825 half cent. Just a trace of friction on the highest points of the design, but each side has nearly full cartwheel luster and there are even traces of mint red peeping through the frosty steel brown toning in the right obverse stars. Not much in the way of marks, just a few microscopic nicks at the central reverse and a tiny, as-struck planchet flake inside of star 2. LDS, Manley 3.0. In a PCGS MS62BN holder.



73. 1825 C-1 R3 VF20. Attractive two-tone color, tan devices contrast with very dark fields. A pleasing coin for the grade, a nick before star 6 and a small spot of old verdigris within the reverse wreath are the only blemishes. LDS, Manley 3.0, and the dies are rotated about 160 degrees CCW. In a PCGS VF25 holder.



75. 1826 C-1 R1 XF40. Sharpness close to AU. Very lightly cleaned but just about fully retoned. The obverse is glossy steel brown and attractive while the reverse has a few flaws – some microscopic porosity within the wreath and some glue residue or something similar around the M in AMERICA. LDS, Manley 5.0.



76. 1826 C-2 R3+ AU50. A high grade example of the scarcer 1826 and actually one of the scarcest business strike die marriages of the entire Classic Head series. Frosty medium brown surfaces with some tan toning in the protected areas where the original mint color only lightly faded down. Just barely worn on the highpoints and the fields retain a good amount of cartwheel luster. There are some tiny contact marks on the obverse – a nick on the bust and a collection of microscopic tick marks in the field before stars 3-6. EDS, Manley 1.0, with some fine repunching clearly visible on the right side of the 6 in the date. *Ex Bill Eckberg.*



77. 1828 C-1 R1 AU55. 13 Stars. Choice light olive brown and steel surfaces with frosty mint luster on both sides and peeps of mint red in some of the details on the obverse. Light friction on the highpoints but this one clearly didn't circulate much, if at all. No marks worth mentioning. Received a good strike from a fairly early state of the dies, Manley 2.0 early.



78. 1828 C-1 R1 XF45. 13 Stars. AU50 detail. Very lightly cleaned but retoned to an attractive light tan brown with a little bit of colorful iridescence. Only trivial contact marks and an overall pleasing piece. Later die state than the preceding, Manley 3.0, with the spike gone from the leaf tip over the H in HALF.

Lovely 1828 12 Stars



79. 1828 C-2 R1 AU58+. 12 Stars. A beautiful, near-mint example of the popular 12 Stars variety. Boldly struck, the fields are reflective and there is some cartwheel luster through the peripheries. Predominantly chocolate and olive brown with some golden-orange toning from faded mint red on the reverse and blue-green iridescence on the obverse. Clean surfaces without any distracting marks or spots. E-MDS, Manley 1.0 late. A pretty half cent. *Ex Bill Eckberg.*



80. 1828 C-2 R1 XF45. 12 Stars. Sharpness of AU55 and certainly an attractive coin though close inspection reveals some extremely light porosity in the fields on each side. Mostly even, dark olive brown toning with some minor traces of orange color from an old cleaning around the wreath. A sharp EDS example, Manley 1.0. *Ex Western Numismatics 9/14/1970 – Davy Collection, Goldberg's 9/4/2011, lot 407 – COL Steve Ellsworth.*



83. 1828 C-3 R1 MS63+. 13 Stars. A flashy UNC. The obverse is brilliant mint red with at least 90% of the original color intact, just starting to tone to violet-steel at the upper rim. The reverse has less red, maybe 25%, but sports highly attractive blue, violet, and lavender toning. Intense cartwheel luster on each side and the surfaces are very well preserved showing only microscopic abrasions. E-MDS, Manley 2.0 early. In a PCGS MS63RB holder.



81. 1828 C-2 R1 XF40. 12 Stars. Another nice 12 Stars half cent, this one with original surfaces that are just about choice for the grade. Honey brown and tan toning with some subtle mint frost through the stars and legends. A little bit of dirt in the details but no corrosion or notable marks. MDS, Manley 2.0.



82. 1828 C-2 R1 VG7. 12 Stars. Misaligned Dies. An interesting and unusual error for the type. Obverse off-center by about 5% to 5 o'clock while the reverse is centered perfectly. Smooth light brown surfaces and a very attractive coin for the grade.



84. 1828 C-3 R1 AU50. 13 Stars. Sharp AU58 detail, the surfaces mostly glossy and subtly lustrous. There is some microscopic porosity in places, strongest at the upper obverse, but you need a glass to see any of it. Thin scratch at R1 in AMERICA and a spot of verdigris on the rim outside star 4. Deep olive brown with some reddish toning at the centers. Tiny planchet clip just past 6 o'clock. MDS, Manley 2.0 late.



85. 1829 C-1 R1 AU58. An attractive example of the date and very near mint state. Rich chocolate brown toning over frosty surfaces with nearly full mint luster, there is just a trace of rub on the highpoints and in the obverse fields. The obverse has some spots of darker color mixed into the toning and there are some fainter streaks on the reverse, but no distracting marks and this is an overall pretty half cent. Well struck from an early state of the dies, Manley 1.0. *Ex Bill Weber; Superior 6/3/2002, lot 2375 – Phil Moore.*



88. 1834 C-1 R1 AU55. Strong cartwheel luster, just some light friction away from mint state. Predominantly glossy light brown with areas of dusky reddish-brown patina and steel toning on some of the highpoints. Only microscopic marks. MDS, Manley 2.0, with clashmarks on both sides. *Ex Mike Packard.*



86. 1832 C-2 R1 XF45. Sharpness AU55 and the surfaces are flawless save for some light hairlines on the bust and in the field above the date. Pleasing chocolate brown color with lighter tan toning surrounding the legends and stars. E-MDS, Manley 1.0. *Ex R. Tettenhorst.*

89. 15 Coin Grading Set of Classic Head Half Cents. A carefully selected group to represent 15 different grades from AG3 to AU58. All are attractive, generally problem-free coins. Pictured in the Grading Guide on page 17. See the photo on the following page and careful in-hand inspection is recommended. *Ex Bob Fagaly. (see next page).*



90. 1841 Electrotype Copy of Proof Original Breen 1-A XF45. A decent electrotype copy with dark reddish-brown toning and just a few tiny specks of lead showing through the plating. Slightly grainy surface texture.



87. 1832 C-3 R1 AU50. A nice AU half cent with frosty cartwheel luster underneath rich, chestnut brown toning. Clean surfaces with just some as-struck planchet flakes on the obverse. MDS, Manley 1.0, with light flowlines and reverse die rust. *Ex Hetrich Collection, Bowers & Ruddy 1/1982, lot 1277 – Mike Packard.*

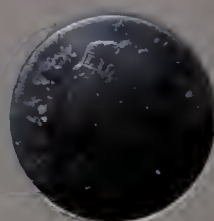


91. 1845 Electrotype Copy of Proof Original Breen 1-A XF40. Rather abrasively cleaned with hairlines and artificial orange color on both sides. Well-executed detail and the surfaces are smooth and glossy aside from the hairlines. Seam visible around most of the edge.

EAC GRADING SET  
Sol. Grollman grades



3 C-3



5 C-2 m1.0



7 C-6 m5.0



10/7 C-5 m2.0



12 C-1 m1.0



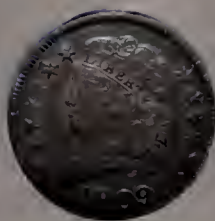
15 C-1 m2.0



20 C-2 m3.0



25 C-2 m3.0



30 C-6 m1.0



35 C-3 m4.0



40 C-1 m1.0



45 C-1 m1.0



50 C-3  
cns/c6



55 C-2 m1.0  
ngc 62



58 C-2 m1.0



92. 1846 Second Restrike Proof Breen 1-C R6 Proof-40. No electrotype here. Light olive and tan surfaces with some tiny pits scattered across both sides and a few heavier ones within the reverse wreath. AU sharpness, just barely worn. Impaired, but that makes for a good opportunity to obtain a relatively affordable example of this rare proof-only date. In an NGC Proof AU details, environmental damage holder. *Ex Eric Newman/R. Tettenhorst, the "Missouri Curio Cabinet", Heritage 11/8/2015, lot 29064.*



93. 1851 C-1 R1 XF45. Die Adjustment Strike. Light olive brown surfaces with some golden-orange highlights. There is noticeable mint frost and this might technically be an AU, but portions of the portrait, stars and reverse wreath and legends were weakly struck due to insufficient striking pressure. Similar weakness has been seen on other 1851 half cents of similar die state (cf. Davy II:441). Full weight and thickness, 84.9 grains.



94. 1853 C-1 R1 AU58. Frosty deep olive brown and steel surfaces with mostly undisturbed cartwheel luster on each side. Tiny traces of real mint red can be found around the date and hair as well as ME in AMERICA. No marks of note and just the barest trace of friction. LDS with flowlined, somewhat wavy fields. In a PCGS AU58 holder and seemingly undergraded per their standards.



95. 1853 C-1 R1 XF40+. Ideal chocolate brown surfaces that are choice for the grade. Late die state. In an ANACS AU55 holder.



96. 1853 C-1 R1 XF40. Sharp AU55 detail. Glossy medium-brown surfaces with some light hairlines and artificial orange color from being cleaned. Early die state, the die line through the first T in STATES is clear.



97. 1856 in Copper-Nickel Judd-177 Breen 1-B R4 Proof-6. An intriguing well-worn example of the experimental copper-nickel 1856 half cent. These were struck to test the alloy (88% Cu, 12% Ni) that would eventually become the composition of the 1856-1864 small cents. Extreme strike weakness at the lower obverse and opposing reverse caused by a tapered planchet on what was already thin stock. No date visible, but the composition, weight, and reverse wreath detail confirm the attribution. One of the most worn examples seen and this was perhaps a pocket piece as the surfaces are perfectly smooth without any of the marks or damage seen on a coin that circulated extensively. A really neat item. 69.4 grains.

## LARGE CENTS

**Bold 1793 Chain Cent, AMERI.**



98. 1793 S-1 R4 F12. Chain, AMERI. You may have noticed this one at the center of the front cover. A visually pleasing and exceptionally well defined Sheldon 1. Detail solidly in the VF range, perhaps approaching XF from a wear standpoint given the sharpness of the peripheries, portrait, and chain. The entirety of the fields and devices were very carefully burnished – the evidence of which is just some light hairlines seen under a glass and a sort of fuzziness to some of the details caused by the tooling that was done in and around them. The smoothing apparently worked though as there is hardly any roughness or porosity to be seen, just a few tiny pits scattered about. The toning is an attractive light olive and steel brown with tan highpoints. A great coin despite it's qualifiers and one to be carefully considered if you've been thinking about an AMERI. Rarely can you find a sharp piece that's this easy on the eyes without a stratospheric price tag. In an ANACS "VF30 Details" holder. *Ex Dan Trolan.*



TDS S-1, Ex Dan Holmes



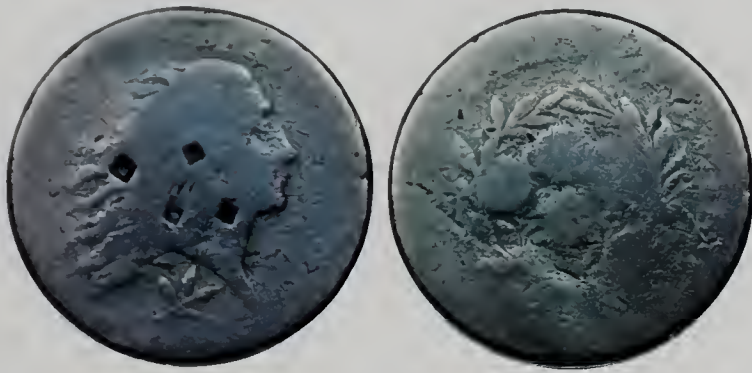
99. 1793 S-1 R4 BS1. Chain, AMERI. The very rare terminal die state with a strong cud on the reverse at TAT in STATES. This is a well worn Chain cent, but the surfaces are about as pleasing as could be hoped for at this grade level. LIBERTY is readable on the obverse and the portrait is mostly outlined. No date except for maybe a trace of the top of the 3. On the reverse about half of the chain is visible and the cud protected the surrounding detail so STATES is bold. Glossy medium brown without any hint of corrosion. A script "G" is neatly engraved upside down at the center of the obverse and there is some other extremely fine graffiti in the right obverse field. Far fewer marks than you would expect for a basal state cent. Really a charming coin and special given its die state and provenance. *Ex Northern Illinois Coin Co. 6/1981 - John D. Wright, 2003 EAC Sale, lot 284 - Dan Holmes, Goldberg's 9/6/2009, lot 2.*



100. 1793 S-8 R3 VG10. Wreath, Vine & Bars Edge. Sharpness near F15 but has some streaky granularity on the left side of the obverse and lighter porosity at the lower reverse. Otherwise fairly smooth dark brown surfaces with lighter toning on the highpoints. Offers a nice amount of detail – the date and legends are bold, portrait strong, and the reverse detail complete except for weakness at ONE CENT caused by die swelling. Edge devices mostly complete. Interesting planchet cutter impression along the upper obverse and lower reverse rim. *Ex 2012 EAC Sale, lot 79 - COL. Steve Ellsworth.*



101. 1793 S-9 R2 G5. Wreath, Vine & Bars Edge. About 5 points sharper. Dark steel surfaces with some shallow, scaly corrosion affecting the obverse fields and portions of the devices. Lighter granularity and some old scratches on the reverse, that side with a circle of brick red toning covering the wreath. The date and legends are all easily readable and the devices are complete and fairly bold. A good majority of the edge detail is clear. A little rough, but still a decent representative of the type.



102. 1793 S-9 R2 FR2. Wreath, Vine & Bars Edge. Close to G on the obverse with a fully outlined portrait and half-visible date and LIBERTY. Weaker on the reverse with most of the legends worn away, but a majority of the wreath outlined. Glossy light brown surfaces that are nice for the grade except for four small square nail holes which punctured deep into the obverse causing bulges opposite them on the reverse. Edge detail 90% visible. *Ex Colin Simmons.*

Smooth Good S-13



104. 1793 S-13 R4- G4+. Liberty Cap. A remarkably problem-free '93 Cap. Glossy surfaces with deep steel brown toning and just a hint of underlying microgranularity in the fields. Only trivial circulation marks and far fewer than the grade would normally allow. Fully readable date and legends though a few of the reverse letters are weak. Sound rims with complete edge lettering. Fresh from an old-time collection and worthy of a strong bid – precious few 1793 Liberty Cap cents survive in this grade without significant condition issues. *Ex Colin Simmons.*



103. 1793 S-11c R3 VG10. Wreath, Lettered Edge. A pleasing Wreath cent with only minor surface issues. Two-tone color, dark brown and light chocolate creating an attractive contrast between the fields and devices. The darker toning gets a little sealy in places on the obverse while the reverse is smoother, just a tad microgranular in some of the recesses. Slightly glossy overall though and with no marks that detract. All of the major detail is clear. A very acceptable example for the grade. In an old, green-label PCGS VG10 holder.



**106. 1794 S-17a R5- G4.** Head of '93, Edge of '93. Another example, not as sharp but with very nice surfaces for the variety. Glossy medium brown with no problems other than some shallow laminations at the upper obverse and some very light granularity on the reverse and a few places on the obverse which appears to be natural to the planchet. Obverse detail strong for the grade with a good portrait and date. The reverse weaker, but thanks to the old two-tone color, much of the detail is visible when viewed at the right angle. Bold edge lettering. *Ex Tom Reynolds 4/21/1995 – Walter Mustain.*



**105. 1794 S-17a R5- G5.** Head of '93, Edge of '93. Struck on a fairly broad and oval-shaped planchet, something typical of the variety, ranging in diameter from just over 28mm to almost 30mm. VG8 sharpness with granular surfaces and some streaky corrosion in the right obverse field. Strong obverse detail, the reverse weaker but still full for the grade. Lightly cleaned and there are some blue and orange overtones, but the color is generally a decent medium brown. Complete, bold edge lettering. A suitable representative of the “first” 1794 cent. *Ex Dan Holmes – Dan Trollan.*

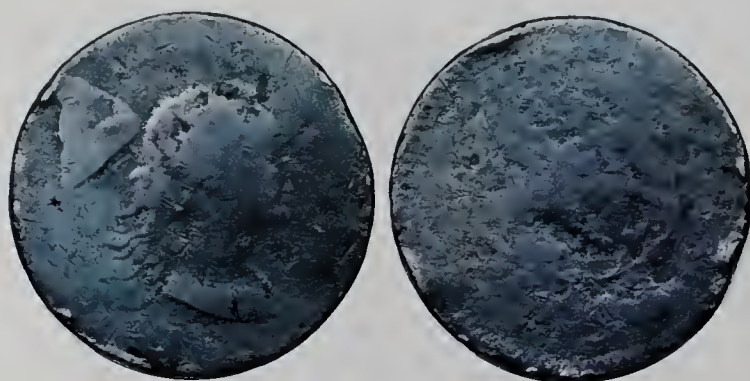
**107. 1794 S-17a R5- AG3.** Head of '93, Edge of '93. A third (!) example and this one is on a fascinatingly crude planchet. Heavy parallel striations run horizontally on each side and there are some detached laminations on the reverse. Essentially problem-free in terms of post-strike issues. The technical grade could possibly be G5 or even better based on the detail in some places, but our grade is based on the overall appearance and effect of the planchet flaws on the definition. *Ex Tom Keenan.*



108. 1794 S-18b R4 F12. Head of '93, Edge of '94. A bold and pleasing Head of '93 cent despite some light granularity covering each side. Only light, even wear and detail well into the VF range. The surfaces have slightly glossy, medium to steel brown patina and the roughness is really only bothersome under a glass. No marks to report and the edge is in great shape with strong lettering. E-MDS, Breen state III. Quite a nice example and deserves thorough consideration.



109. 1794 S-18b R4 VG8. Head of '93, Edge of '94. Sharpness F12 with some light granularity on each side and several old scratches running vertically on the portrait down to the date as well as a couple of fine hairlines running horizontally on both sides. Complete edge lettering. Medium olive brown color and an overall decent appearance despite the imperfections.



110. 1794 S-19b R4 Fair-2. Head of '93, Edge of '94. A couple points sharper with some scattered nicks, rim bumps, and rough patches. Still a readily identifiable example and the distinctive Head of '93 is fully outlined. Edge lettering mostly readable. *Ex Dan Trollan.*

Solid VG Sheldon 20b



111. 1794 S-20b R4+ VG7. Head of '93, Edge of '94. A noteworthy example of the variety. There are a handful of nice VF's (and an AU in ANS) that top the census, but that list quickly drops down to VG and contains many coins with serious condition issues. This is a pleasing and strong VG with generally smooth light chocolate and olive surfaces. A glass reveals a bit of light, underlying granularity and evidence of some careful smoothing in the fields, but the overall quality is way above average. Tiny curved clip at 7:30. Edge lettering complete and bold. *Ex Walter Reed - Fred Borchardt.*



114. 1794 S-27 R5 AG3. Head of '94. The elusive "Egeria" variety. G5 detail on the obverse and all of the major design elements on that side are outlined. Reverse only Fair. Glossy, lightly bur-nished surfaces with some underlying roughness. No major marks, just one reverse scratch. Strong edge lettering. A perfectly decent example of this tough '94 and one that won't break the bank. *Ex Jim Young 10/2010 – Dan Trollan.*



112. 1794 S-21 R3 VF25. Head of '94. Glossy, corrosion-free surfaces with choice light chocolate brown color. Sharpness approaching VF30, there are just a few minor nicks on the portrait and in the right obverse field and a pair of similar nicks on the reverse, one at the E in UNITED and one at the O in OF. E-MDS, Breen state II. A very pretty '94 and desirable example of the "Flat Pole" variety. *Ex Walter Reed – Fred Borchardt.*



115. 1794 S-28 R2 VF25. Head of '94. An attractive piece with light reddish-brown fields and tan highpoints. Strong obverse detail, that side is a bit better than the assigned grade, while the reverse is slightly weaker due to the weak borders in this lapped state. There are a few tiny nicks and a couple rim ticks on each side though none are individually concerning. The surfaces are hard, corrosion-free, and rather glossy. MDS, Breen IV, with some faint obverse die cracks showing. In an NGC VF25 holder. *Ex Jack Beymer – Joel Spingarn – Dan Trollan*



113. 1794 S-24 R1 G4. Head of '94. Sharpness VG8+ but light-ly rough and there is a rather severe scratch bisecting the reverse. Steel brown with some brick red patina in places. The obverse is fairly well defined and the "Apple Check" feature is obvious. Complete edge lettering.



116. 1794 S-28 R2 VG8+. Head of '94. Slightly sharper, especially on the obverse which is a bold Fine. No real corrosion, just myriad tiny contact marks that make the coin's appearance not perfectly smooth. Little spots of verdigris on the cap and above BE in LIBERTY, but no other pitting. A few marks including a scratch above the cap, some hairlines on the portrait, and handful of minor rim bumps. Not a bad '94 overall – certainly a decent date coin for the grade.



117. 1794 S-28 R2 VG7. Head of '94. A curious coin – thin and well underweight at 9.55 grams, lighter even than later plain edge large cents. Both sides are glossy medium brown with nothing that looks like environmental damage, but there is an unusual rough texture to the surfaces especially on the obverse. Our best guess is that this cent was left sitting in some of kind of acid early on in its life and then circulated normally, smoothing over most of the corrosion. One thin scratch bisects the obverse, but no other problems beyond the odd surfaces.

118. 1794 S-29 R2 VF25. Head of '94. A handsome 1794 with light chocolate brown color and strong VF30 detail. There are several tiny spots of verdigris on the lower half of the obverse and a bit of slightly rough reddish patina at RTY. Also a thin scratch from the I down to the hair, but no other marks of note and the reverse is choice. Minute planchet clip at 4 o'clock. LDS, Breen state IV. An excellent example of the variety and die state. *Ex Goldberg's 6/2010, lot 615 – Bill Eckberg.*



120. 1794 S-30 R1 G6. Head of '94. A nice coin for the grade. Full obverse detail, the reverse weaker due to the late die state but still with full borders. Glossy tan brown and chocolate surfaces without any notable marks, just a trace of light porosity on the reverse and some tiny specks of old verdigris. In an ICG VG8 holder. *Ex Greg Hannigan – Dan Trollan.*



119. 1794 S-30 R1 VF20+. Head of '94. Sharpness of a VF30 coin and the color is an attractive light brown with tan toning in the protected areas. Each side glossy but with a somewhat rough appearance – this partially due to rusted and flowlined dies, but there also patches of light pitting scattered about. No verdigris though. The reverse has a particularly high grade look thanks to the strong borders on that side which protected the detail and there is even a very faint trace of cartwheel frost through the legends. LDS, Breen state IV late, with strong clashmarks on both sides. A strong example of Maris' "Amiable Face" and it is true that Liberty has decidedly kind looking eyes on this obverse. *Ex Walter Reed – Fred Borchardt.*



121. 1794 S-32 R2 VF25. Head of '94. Bold VF35 detail, well-struck save for the right obverse border and opposing reverse – something often seen on this variety as the dies were slightly out of parallel. Attractive two-tone color and the surfaces are predominantly smooth and glossy, there are just a few patches of light roughness and shallow verdigris, mostly on the obverse, as well as some microscopic granularity in the fields. E-MDS, without the obverse rim break above LI and showing two sets of clashmarks on the reverse. Another strong '94 that is *Ex Walter Reed – Fred Borchardt.*



122. 1794 S-34 R5+ AG3+. Head of '94. G5 detail and has pleasing light brown color, something rarely encountered on lower grade S-34's. No corrosion but there are many small peck marks on each side and a couple of heavier marks obscuring the LI of LIBERTY. Readable date and the legends are nearly complete. LDS, Breen state III late, very close to terminal, but the cud before LIBERTY is still retained showing a faint outline of the cap within it. *Ex Yesterday's Change – Henry Hettger.*



124. 1794 S-38 R5 F12. Head of '94. A noteworthy S-38 with strong VF25 detail and a bold, even strike on each side. Lightly granular under a fairly glossy medium brown to steel patina. There are some small pits scattered across the lower obverse and reverse as well as some specks of raised verdigris here and there. No distracting marks though, nice clean rims, and this is a specimen sure to please many a 1794 specialist. Breen state I (which actually might be a later die state than Breen II), with the outermost flaw in the left obverse field hardly visible. *Ex Walter Reed – Fred Borchardt.*



123. 1794 S-35 R5 G4. Head of '94. Another very tough '94. Sharpness VG10 with dark, granular surfaces. Hardly any marks and this certainly helps the eye appeal, a rim nick past LIBERTY is the only one to note. MDS. A respectable, easily identifiable example of one of the rare "Single Berry" varieties. *Ex Jim Long.*



125. 1794 S-38 R5 AG3. Head of '94. G6 detail with granularity affecting the fields and devices on each side. The color is decent though – tan highpoints with medium brown and brick red fields. Date and legends fully visible, some letters made indistinct by the roughness. Easily attributable and a decent, affordable example. *Ex Jim Long.*





**126. 1794 S-43 R2 VF20.** Head of '94. Smooth surfaces with lovely tan-brown color. Detail slightly sharper than the assigned grade as the surfaces show just a few minor imperfections. These include small digs at the center of the obverse on the portrait, on the chin, and at the fraction bar. There are also short, old scratches at Liberty's temple and in the field above the pole. A glass reveals some light obverse hairlines as well, but all of these issues are pretty minor and the overall visual appeal is very nice thanks to the glossy surfaces and choice color. EDS, Breen state I, with no crack through the U in UNITED. *Ex Fred Borchardt.*



**128. 1794 S-47 R4 VG10.** Head of '94. Attractive pale brown surfaces that are just a tad microgranular in the fields. A few light rim bumps on each side, but there are no distracting marks affecting the fields or devices. Well-balanced detail with sharp borders and complete date and legends. A thoroughly satisfying example of a rather tough Sheldon number. *Ex Paul Padget 1/1977 - Rod Burress.*



**129. 1794 S-49 R2 VG7.** Head of '94. Light brown devices contrasting pale olive fields. A bit sharper but there is some minor granularity in places and signs of an old attempt at smoothing the roughness in the obverse fields. Full detail for the grade, the reverse peripheries weaker than the obverse as usual. *Ex CSNA Sale '66, lot 1 - G. Lee Kuntz - Doug Bird - Dan Demeo.*



**127. 1794 S-46 R3 G5.** Head of '94. A neat example of a very late state of the variety, Breen V, with heavy obverse cracks and a chip out of the die above the 4. VG detail, the surfaces glossy and not bad for the grade, there are just a few patches of slightly rough red patina mixed into the otherwise steel brown and olive toning. Otherwise just some minor rim nicks and light scratches, nothing egregious. *Ex COL Steve Ellsworth.*



**130. 1794 S-50 R5 VG8+.** Head of '94. A strong example of this challenging variety of which fewer than a dozen are known better than VG. Solid VF20 detail, the surfaces a slightly reddish olive brown color and lightly porous. Relatively few marks - there are some scrapes on the portrait and a scratch under the cap, but nothing major. A known coin and traditionally called an 8, but you could easily argue for a slightly higher net grade based on the level of definition and decent eye appeal. *Ex Coin Galleries 11/99, lot 2665 - Jack Stickel, Heritage 4/28/2011, lot 3980 - Greg Haunigan - Terry Denman.*

**131. 1794 S-50 R5 G6.** Head of '94. Another example of this rarity and also very respectable. Glossy olive brown with a few old



scratches on each side. Rare LDS, Breen state III, showing a crack from the 4 through the bust tip and pole. *Ex Walter Reed - Fred Borchardt*



**132. 1794 S-51 R5- F15.** Head of '94. VF25 detail with sharp design elements. The fields are a bit granular and lightly smoothed on the right side of the obverse. The visual effect of the roughness is subdued by a rather glossy patina and tan toning on the highpoints which contrasts nicely with the darker brown fields. LDS, Breen state III, with a strong die crack up through the 17 of the date and across the bust. Not a perfect coin, but a bold and pleasing example nevertheless. *Ex Nippert Collection, Mallette & Associates 7/25/2015, lot 42-H.*



**133. 1794 S-51 R5- G4+.** Head of '94. A very attractive coin for the grade with just honest wear and nice two-tone color. Obverse G5 while the reverse is a bit weaker at the peripheries. Complete edge lettering. *Ex Don Stoebner.*



135. 1794 S-57 R1 G4. Head of '94. Light steel brown surfaces that are fairly smooth and attractive for the grade, just a little matte from some microgranularity. A few minor rim bumps and one reverse scratch but otherwise just worn. Obverse date and legend mostly readable while the reverse peripheries are worn. *Ex COL Steve Ellsworth.*



134. 1794 S-57 R1 VF25. Head of '94. The distinctive "Pyramidal Head" and this is a well-detailed and pleasing example. A strong 30 coin by sharpness. Requires a small deduction for a pair of obverse scratches, at 12 o'clock and below the ear. There is also some trivial porosity scattered about if you look hard enough with a glass, but the predominant theme of the surfaces is smooth light chocolate with some darker brown toning in the fields. Dies not perfectly parallel so the area from 10 to 11 o'clock on the obverse and opposing reverse were a bit weakly struck. EDS, Breen state I. *Ex Walter Reed – Fred Borchardt.*

136. 1794 S-58 R3 VG10. Head of '94. Glossy tan brown surfaces with excellent eye appeal and just a few minor marks. There are two rim bumps, visible only on the obverse at 12 and 3 o'clock. Also a few pits which appear to be as-struck planchet voids, most notably at Liberty's mouth and the reverse ribbon bow. Strong borders and well-struck detail. LDS, Breen state III late, with a strong crack at UNIT and a retained cud outside of it. *Ex Dong Bird 7/2000 – Walter Mustain.*



137. 1794 S-60 R3 VG8. Head of '94. Glossy chocolate brown with some areas of lighter tan and darker red toning. Sharpness approaching F12 but there are many fine hairline scratches on each side, most only visible with a glass, and a few scattered nicks and rim ticks. Still a fairly pleasing coin for the grade with a nice bold date and almost complete legends.



138. 1794 S-61 R4 F15+. Head of '94. Deep olive brown surfaces with tan toning on some of the highpoints. Better than VF20 detail and quite pleasant looking despite some extremely light granularity in the fields under a moderately glossy patina. Zero marks worthy of mention. *Ex Walter Reed – Fred Borchardt.*

140. 1794 S-64 R5- VG10. Head of '94, Missing Fraction Bar. Lightly granular in the fields and lower relief portions of the devices, but still a pleasing coin and solid representative of this tough *Red Book* variety. Even, light chocolate brown toning, F15 detail, and no marks other than an old nick right of E in ONE. The fraction is clear and the bar is indeed missing. *Ex Howard Whitaker 11/1981 – Rod Burress.*



139. 1794 S-63 R2 F15. Head of '94. A sharp example of the popular "Fallen 4" variety with detail in the VF25 range. Highly glossy light olive and tan brown surfaces that were burnished to minimize the appearance of light granularity in the fields. Some of that granularity is still noticeable on the reverse while the obverse is much smoother. Totally free of marks and has choice rims/edges. *Ex Walter Reed – Fred Borchardt.*



141. 1794 S-66 R5 G4. Head of '94. The scarce "Split Pole" variety and that feature is easily seen on this intermediate die state, Breen II, example. Very dark surfaces that are lightly granular but free from any other notable damage. Sharpness is a solid G6 on the obverse with a bold date and legend, while the reverse is only AG. A variety that's solidly R5 and not frequently available in any grade. *Ex Tom Keenan.*



142. 1794 S-68 R5 G5. Head of '95. The rarest Head of '95 variety, here in a late die state and immediately recognizable by the bisecting obverse die crack. VG detail and decent, lightly rough surfaces that were recolored to a very dark brown with some subtle orange-red highlights. Appears to have had some repair work done from 5 to 6 o'clock as there is some discoloration and fresh copper color on the rim in that area. *Ex Chris Young – Dan Trollan.*

Choice Lettered Edge 1795



143. 1794 S-71 R2 VF20. Head of '95. Strong detail, closer to VF25 and fully of that grade on the reverse. Deep olive brown surfaces that are just a touch microgranular in the fields. E-MDS, Breen state III early. Not perfectly smooth, but an attractive Head of '95 cent anyway. No marks, just a small part of the rim right of the date that was smoothed down a bit. Well struck and everything is quite bold including very strong borders – perfect for counting dentils if you're into that sort of thing. *Ex Walter Reed – Fred Borchardt.*



145. 1795 S-75 R3 VF25. Lettered Edge. Glossy medium brown surfaces of impeccable quality and unbeatable eye appeal for the grade. Well-struck throughout and shows just light, even wear. MDS, Breen state IV. In a PCGS VF30 holder. *Ex Edward Schwartz – George Ramont 6/1/1967 – Jules Reiver, Heritage 1/2006, lot 19248 – Dan Trollan.*



144. 1794 S-72 R2 G6. Head of '95. A couple point sharper with nice full detail on each side. It appears the coin was lightly burnished and recolored, the obverse an orangey-brown with darker fields and the reverse a more uniform reddish brown. No major marks and overall a decent cent. *Ex Don Stoeber.*



146. 1795 S-76b R1 FR2+. Plain Edge, Heavy Planchet. An interesting piece, one of maybe a couple dozen S-76b's seen struck on a heavy planchet the weight of a lettered edge cent, but with no edge lettering applied. This one is 13.08 grams, 201.9 grams – in line with what a lettered edge cent would weight in this grade, but there is no trace of any edge lettering which there would be even in this grade. Also shows two small curved planchet clips at 9 and 11 o'clock. Decent brown surfaces, just well worn

High Grade Sheldon 77



**147. 1795 S-77 R3 XF40.** Plain Edge. A lovely coin and easily among the top 10 examples known of the rather scarce S-77. Glossy light steel to chocolate brown surfaces with tan toning in the protected areas. Pristine except for a handful of tiny, as-struck planchet voids on the portrait and right obverse field under the Y. E-MDS, Breen state II. A desirable example that has a great provenance. *Ex A. H. Baldwin & Sons – New Netherlands Coin Co #50, 12/1957, lot 989 – Lester L. Greenwood – Robert S. Carter, Jr. – Tom Reynolds FPL #88, 3/24/1997 – Jack Wadlington (via M&G) 6/30/2005 – Dan Holmes, Goldberg’s 9/6/2009, lot 124 – Bill Eckberg.*

**148. 1795 S-77 R3 VF30.** Plain Edge. Another very nice example, this one from a later state of the dies. Glossy olive brown surfaces that show no marks or corrosion, just a few microscopic planchet voids on the portrait. M-LDS, Breen state IV, with reverse die cracks and swelling starting to advance on the obverse from 6 to 9 o’clock causing weakness at the opposing reverse. In an NGC VF35 holder. *Ex Unknown Mayflower Sale, lot 327 – George Ramont 12/4/1969 – Jules Reiver; Heritage 1/2006, lot 19252 – Dan Trollan.*



**149. 1795 S-78 R1 VF20.** Plain Edge. Glossy light chocolate brown surfaces with subtle pink-orange highlights indicating a long ago cleaning from which this cent has almost fully recovered. No hairlines from the cleaning, but there are myriad faint scratches in the obverse field that are visible with a glass. The sharpness is VF25 and all told, this is a nice '95. *Ex 2000 EAC Sale, lot 147 – Dan Trollau.*

**152. 1796 S-87 R3 VG10.** Liberty Cap. Decent medium brown surfaces and nice full detail on each side. No corrosion aside from a few small spots of verdigris off the cap and at the top of the hair. Slightly rough appearance due to myriad tiny contact marks, otherwise the cent is close to F12. *Ex Henry Hettger.*



**150. 1796 S-84 R3 G5.** Liberty Cap. Finely porous surfaces with some green and reddish verdigris build up and light scratches on the obverse. Close to F12 detail and generally bold for the grade, the date just a bit weak. *Ex Heritage 1/2014, lot 9085 - Dan Demeo.*

**153. 1796 S-88 R4 VG8+.** Liberty Cap. A pleasant '96 Cap and a difficult variety to find so. Slightly glossy olive brown surfaces and lighter toning on the highpoints. The fields are just barely microgranular if you look hard enough with a glass, but the overall appearance is smooth and acceptable for the grade level. A couple light rim bumps, otherwise free of notable marks. Bold date and legends.



**151. 1796 S-86 R5 G6.** Liberty Cap. Sharpness VG10 overall. The obverse is an attractive and mostly problem-free glossy medium brown while the reverse has a swath of small verdigris pits across the upper obverse and light granularity elsewhere. Still a worthwhile example of this condition sensitive variety, one of the rarest '96 Caps. *Ex Stockton Coin Shop – Bob Vail 10/1995 – John Keyes – Walter Mustain (purchased at EAC 2003).*

**154. 1796 S-89 R3 VG7.** Liberty Cap. Counterstamped "AU" above ONE CENT on the reverse. Close to F12 detail with a bold date and strong legends. There are a few patches of light roughness on each side and some artificial orange color highlighting the devices, but the surfaces are predominantly glossy steel brown and decent looking.

Key Sheldon 96



155. 1796 S-93 R3 VG8. Draped Bust, Reverse of '95. A well detailed '96 Bust and good representative of this impressive late die state. Sharpness F15 with lightly rough fields and several shallow nicks scattered across each side. Dark olive brown background with lighter devices. Heavy reverse die cracks, nearly terminal, Breen state IX. *Ex Tom Keenan.*



158. 1796 S-96 R6 AG3. Draped Bust, Reverse of '95. A famous rarity in the Sheldon series and this is a readily identifiable example. Sharpness G6 or so, the date and legends are mostly readable though weakened in places by light to moderate pitting. There is also some raised black corrosion on the reverse and scattered spot of verdigris on both sides. A late die state example and the bisecting reverse die crack is clear most of the way across. Really a decent example, there are certainly some worse ones out there. With only about two dozen examples known and several times that many collectors working on Sheldon sets, every S-96 is special. In an NGC "VG Details" holder. *Ex Jim Long.*



156. 1796 S-94 R5+ G5. Draped Bust, Reverse of '97. Detail close to VG7, the date and legends are complete, just slightly weak in places near the rims and the central definition on each side is easily VG caliber. Light roughness, scratches, and minor verdigris scattered about as well as some remnants of lacquer surrounding the portrait. Despite all this, the overall look is not too bad for the grade, especially considering the variety. *Ex Jim Long.*



157. 1796 S-94 R5+ G4. Draped Bust, Reverse of '97. Glossy light chocolate brown surfaces, the obverse counterstamped thrice with an early style, serrated rectangle stamp with a "P" as the second initial of the merchant. Clear date and almost complete legends. A neat coin and remarkably nice for an S-94 if you can look past the counterstamps! *Ex Rod Burress - Clay Everhart - Jim Long - Don Poole - Chris Young.*



159. 1796 S-100 R5 VG8+. Draped Bust, Reverse of '97. F12 sharpness, bold definition at the centers with slight weakness at some of the peripheral detail. Finely granular fields with smoother highpoints, the surfaces probably lightly burnished, but the effects of which are not obvious. Decent light olive and steel brown toning. A strong example, there aren't a lot of S-100's better than VG. *Ex Jim Long.*





160. 1796 S-100 R5 G6. Draped Bust, Reverse of '97. Sharpness of a VG, the date and legends bold for the grade. Light roughness to the steel brown surfaces, but otherwise just trivial circulation marks. Respectable for this tough variety. *Ex Tom Keenan.*



163. 1796 S-108 R4 F12. Draped Bust, Reverse of '94. A meaty example with strong VF25 detail. Obverse was burnished a bit to smooth out the patches of brick red roughness. Reverse more natural looking but with some of the same red patches. The majority of each side is glossy light chocolate brown and this is certainly a strong piece overall with considerable definition. *Ex Jim Long*



161. 1796 S-104 R3 G6. Draped Bust, Reverse of '97. The popular "LIHERTY" variety and that feature is bold. VG10 detail, glossy dark olive brown surfaces that are finely granular and lightly burnished. The smoothing blurs some of the finer detail, but the major design elements, date, and legends are all very strong. Decent eye appeal despite the drawbacks. *Ex 1984 EAC Sale, lot 89 – John Stephens.*



164. 1796 S-109 R3 VG10. Draped Bust, Reverse of '94. Better than average for S-109, a variety that seems scarcer than it's traditional rarity rating would imply. Lightly granular medium-brown surfaces with a few spots of darker toning. Little scratch on the obverse rim at 9 o'clock and a few other minor rim ticks, but no serious marks. Sharpness VF20 overall, appearing bolder on the obverse than the reverse, as usual. *Ex Tom Keenan.*



162. 1796 S-105 R5 G5. Draped Bust, Reverse of '97. A challenging variety with a condition census that drops down in a hurry. This is a very nice example for the grade with mostly smooth olive brown and light steel surfaces. A glass reveals trace roughness in the fields and a few faint, old scratches on the reverse. Clear date and nearly full legends. *Ex Jim Long.*



165. 1796 S-114 R5- G5+. Draped Bust, Reverse of '97. Close to VG7 sharpness with complete, strong detail for the grade. Medium to dark olive brown surfaces, lightly granular in the fields but still glossy, reasonably attractive, and free from major marks. Interesting MDS, Breen state VI late, with a thick die crack at TY and the fields starting to rise outside of this crack. *Ex Walter Reed EAC 2005 – COL Steve Ellsworth – Chip Darmstadt.*



166. 1796 S-114 R5- AG3. Draped Bust, Reverse of '97. Earlier die state. Light brown surfaces with patches of light pitting on both sides, strongest in the obverse fields. Sharpness close to G5 and the date and legends are mostly clear. *Ex Henry Hettger.*



169. 1797 S-123 R4 F15. Reverse of '97, Stems. Strong VF20 detail with scattered light porosity on otherwise hard, glossy dark olive brown surfaces. An interesting example of the variety – first of all, it's not a mint state Nichols Hoard piece as are most of the variety. Second, it's from the seldom seen late die state, Breen state IV, with a clear die crack through the bases of the denominator.



167. 1796 S-116 R5 VG7. Draped Bust, Reverse of '97. VG10 detail with a well defined portrait for the grade. Nice clear date and the legends, though worn a bit at the peripheries, can all be made out. Typical surfaces for a '96 Bust in this grade – dark and lightly granular. Only minor marks and not an unattractive example overall of a tough variety. *Ex Chris Young – Dan Demeo.*



168. 1797 S-121b R3 G5. Reverse of '95, Grippled Edge. Sharpness VG8 with dark, lightly granular surfaces. Fairly glossy patina and strong detail for the grade. Edge a little corroded, but the grips can be seen most of the way around. *Ex Don Stoebner.*



170. 1797 S-123 R4 F12. Reverse of '97, Stems. Believe it or not, here is another non-Nichols Hoard S-123, this one from an earlier state of the dies. F15 detail, glossy deep olive brown surfaces with just light uniform underlying microgranularity. No distracting marks, just a tiny rim bump right of the date. Comes with a classic Doug Smith envelope which relates, as always, an entertaining description of the coin and its provenance. *Ex Denis Loring - Bob Shalowitz - C. Douglas Smith - Fred Borchardt.*



171. 1797 S-126 R3 VF20. Reverse of '97, Stems. A handsome coin struck from a fairly early die state, Breen state II. Strong VF25+ detail, the surfaces are a glossy olive brown with some extremely minor underlying roughness visible only with a glass. This roughness is not even strong enough to obscure the fine clashmarks on each side and is hardly worth mentioning. A few faint hairlines in the left obverse field and perhaps very lightly burnished, but attractive nonetheless. *Ex London, England 7/1979 (at £125) – John Stephens.*



172. 1797 S-128 R3 G4+. Reverse of '97, Stems. A point better with glossy, light olive surfaces and just a few thin obverse scratches. Full date, the legends clear except where weakly struck at the right obverse. *Ex Tom Reynolds 11/21/2003 – Tom Gesner.*



173. 1797 S-133 R5 VG7. Stemless Wreath. Very attractive chocolate brown surfaces with no corrosion and full, well balanced detail for the grade. There are several minor rim bumps and a few toned-over scratches on the reverse, but nothing terribly distracting. E-MDS, Breen II, with obverse clashmarks but only faint die cracks. *Ex Bandera Collection, 9/1983 GCNE Sale, lot 1144 – Rod Burress.*



174. 1797 S-133 R5 VG7. Stemless Wreath. Another respectable example of this tough variety, this one representing a later die state, Breen state V. Detail just about VG10. Glossy light steel brown with a little bit of colorful iridescence left over from an old cleaning. There are a few tiny peek marks on the portrait and rims. *Heritage 8/2006, lot 7064 – Dan Demeo.*

175. **Pair of scarce 1797 varieties.** Includes 1797 S-133 R5 FR2+. Stemless Wreath. Glossy light olive surfaces, just worn. *Ex Doug Bird 10/4/2003 – Tom Gesner.* Together with 1797 S-142 R5 AG3. Reverse of '97, Stems. Lightly cleaned, minor marks, otherwise just worn. *Ex Tom Reynolds 12/23/2003 – Tom Gesner.* Lot of 2 coins, both easily attributable.



176. 1797 S-136 R3 G6. Reverse of '97, Stems. Glossy medium brown surfaces that are nearly choice for the grade. Just a few trivial marks on each side. Bold obverse detail with a strong, complete border. Reverse weaker in the usual places due to the die state but fully of the grade in terms of wear. *Ex J.J. Teaparty 11/30/2005 – Tom Gesner.*



177. 1797 S-137 R2 G6+. Reverse of '97, Stems. VG detail and the surfaces are glossy brown and attractive. There is a patch of very light, surfacy roughness on the obverse behind and on the lower curls, but otherwise this is a nice problem-free cent. E-MDS, Breen II. *Ex Tom Reynolds 5/16/2008 – Tom Gesner.*

Well-Pedigreed S-138



178. 1797 S-138 R1 VF35+. Reverse of '97, Stems. A very sharp cent with close to, if not full AU detail. There is a trace of microscopic porosity in the fields, a bit heavier on the reverse, but still unobtrusive. Very dark color, verging on black, but the eye appeal remains considerable thanks to the clean, mark-free surfaces and high grade gloss on each side. M-LDS, Breen state VI. *Ex William Rabin, 1936 – Judge Gaskill, New Netherlands Coin Co., 1956 (privately) – Dorothy I. Paschal, 1973 via Ray Chatham – Robinson S. Brown, Jr. Superior 9/3/1986, lot 197 – The Century Collection Sale, Superior 2/2/1994, lot 821 - Phil Moore. (Includes the Paschal and RSB envelopes and both Superior lot tickets).*



179. 1797 S-138 R1 VG8. Reverse of '97, Stems. Pleasing surfaces, glossy dark brown with no corrosion. There are a few minor rim disturbances, one above the E in LIBERTY and another past the Y. A few small contact marks on the reverse, but overall a nice cent for the grade. LDS. Ex. CVM 7/30/2005 – Tom Gesner.



181. 1797 S-141 R4 F12+. Reverse of '97, Stems. A nice example of a variety that becomes quite scarce in Fine and better. Several points sharper than the assigned and has good definition throughout. Each side is glossy dark brown with lighter highpoints and has a slightly rough appearance due to minor granularity and myriad little contact marks, as well as a few larger pits on the reverse. MDS, Breen III early. Ex RARCOA 1974 CSNS Sale 5/1974, lot 852 – John D. Wright – 2008 EAC Sale, lot 279 – Tom Keenan.



182. 1797 S-141 R4 VG8+. Reverse of '97, Stems. Glossy medium brown surfaces and F12 detail. No corrosion, but there are a few rim bumps on each side, heaviest at 6 and 8 o'clock on the reverse. A few other minor marks including a dig at E in STATES. Still a decent looking example thanks to the color and gloss. M-LDS, Breen III late. Ex 2013 EAC Sale, lot 168 – Rod Burress.



180. 1797 S-140 R1 VF30+. Reverse of '97, Stems. Glossy medium brown surfaces and only light wear. There are just a few as-struck planchet striations and thin laminations on the lower half of the obverse and a small patch of brick red roughness tucked into the wreath right of CENT. Very few contact marks and this is pretty cent overall with close to an XF look. LDS, Breen state VIII. Ex CVM 5/2011 – Bill Eckberg.



183. 1797 S-142 R5 G4. Reverse of '97, Stems. One of the tough '97's and this is decent Good example. Sharpness G5, nice light chocolate and medium brown color. Half dozen obverse nicks, none overly severe, and a few smaller marks on the reverse. Just trace granularity under the gloss, smooth overall. In an NGC "Good Details" holder. Ex Stack's Bowers 11/2015 lot 24029 – Dan Demeo.

Rare EDS 1797 NC-2



**184. 1797 S-143 R5 G4.** Stemless Wreath. Glossy chocolate brown surfaces that are pretty much choice for the grade. Full date and LIBERTY, the reverse legends about half visible. *Ex Mike Iatesta, Superior 9/19/2005, lot 308 – Tom Gesner.*



**187. 1797 NC-2 R6 G5.** Reverse of '97, Stems. Glossy light brown surfaces and G6 detail, but there are many fine, toned over scratches on each side, heavier on the reverse. Not only is this a rare NC, but it's also the extremely rare early die state of the reverse, Breen I, without any rim break over D ST. A neat coin for the specialist and attractive for the grade despite the scratches. *Ex Chris Young – Tom Keenan.*

**185. Pair of scarce varieties, 1797 & 1798.** Includes 1797 S-143 R5 AG3. Stemless Wreath. Glossy light brown, just a bit granular. Together with 1798 S-147 R5 G4. Style 1 Hair. G5 detail and light brown but with some obverse pitting and tiny verdigris spots. Lot of 2 coins, both easily attributable. *Ex Don Stoebner.*



**188. 1797 NC-5 R6 G4.** Reverse of '97, Stems. Sharpness G5 on the obverse, G6 on the reverse. Lightly granular throughout underneath a somewhat glossy olive brown and light chocolate patina. No major marks. A decent and easily attributable example of this rare variety with the added bonus of a neat die state, Breen state IV, with a thick crack through RTY and rim cud before 3 o'clock. *Ex Walter Reed – COL Steve Ellsworth.*



**186. 1797 NC-2 R6 G6.** Reverse of '97, Stems. Sharpness F12 but granular and the obverse surfaces was tooled to smooth the roughness. Light olive and tan brown color and the strong detail makes this a worthwhile example of this rare die pair. Small curved planchet clip at 6:30. Late die state with a bold rim cud past 9 o'clock on the reverse. *Ex John Stephens.*



**189. 1798 S-144 R5+ G4.** Style 1 Hair. G5 detail and strong for that grade. Bold date and complete legends that are just a little weak where affected by the reverse bulge. Lightly cleaned a while ago, now mostly retoned to an attractive chocolate brown though some orange color remains in a few places. EDS, Breen state I. A more than acceptable and relatively pleasing example of this notably tough variety, one whose rarity has held up well over the years. *Ex Ferris Coin – Darwin Palmer – Tom Reynolds – Terry Demman.*

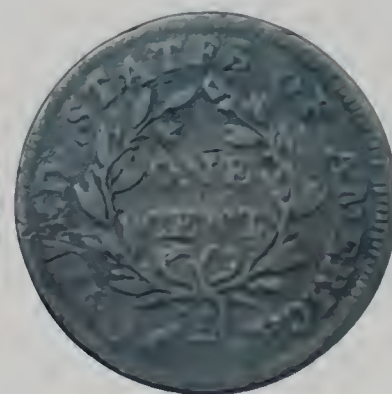
**190. Trio of 1798 Cents.** Includes 1798 S-145 R3 G4. Sharpness VG7 but granular, cleaned, and partially retoned. Struck slightly off center to K7. 1798/7 S-152 R2 AG3+. Bold overdate. Smooth brown, mostly just worn, old reverse scratch. 1798 S-177 R4+ G6. Sharpness VF but dark and corroded. *Ex Jim Long 12/1997 – Superior 12/2002, lot 1219.* All three coins are *ex COL Steve Ellsworth.* Some good value in this lot – worth a look.



**191. 1798 S-146 R5- G5.** Style 1 Hair. Slightly glossy light olive and tan brown surfaces with some underlying granularity and a few patches of raised black verdigris. Sharpness VG10 or maybe a bit better considering the hair and drapery detail visible. Full date and legends. A decent representative of an elusive variety.



**192. 1798 S-147 R5- VG10.** Style 1 Hair. Quite nice for the variety, probably among the best dozen or so known. Sharpness VF20 with much fine detail showing in the hair, drapery, and wreath. Glossy dark olive brown surfaces with fine porosity lying underneath the patina. Just a few nicks on each side, the most notable under the Y of LIBERTY and at the left stem. *Ex Walter Reed – Fred Borchardt.*



**193. 1798 S-147 R5- G6.** Style 1 Hair. A few points sharper but there are some hairline scratches on the obverse and a couple thicker, dull scratches on the reverse. Otherwise glossy chocolate brown and light steel surfaces that are corrosion-free and pleasing. Full date and legends and almost complete borders on both sides. *Ex Dan Demeo.*



194. 1798/7 S-151 R3 G4+. Overdate. Glossy chocolate brown surfaces, very nice for the grade with just a couple old nicks. All of the major detail is outlined except where affected by die swelling and the overdate feature is plain. Ex "Ward" at EAC 1974.



195. 1798 S-154 R4+ G5. Style 1 Hair. Another '98 that's lower grade but quite pleasing considering the level of circulation. Glossy light olive surfaces with just a few little marks in the right obverse fields. Late die state with clear clashmarks and die swelling affecting both sides.



196. 1798 S-156 R5+ F15+. Reverse of '95. A remarkably strong example of this rare variety, of which the typical specimen is heavily worn and/or heavily impaired. Detail approaching the VF30 range, especially strong on the obverse but clearly only lightly worn on either side. Surfaces just a little rough, the obverse with some microscopic porosity in the fields and red patination at the upper half of the coin. The center of the reverse is peppered with light pitting and there is some verdigris at the legends. One nick in the hair, otherwise just trivial marks. All that said, the majority of the surfaces are a smooth, or nearly smooth, medium olive brown and the naked eye appeal of the coin is quite nice. LDS, Breen state III. Clearly one of the best of the variety to be offered in recent years – the CC1 Reynolds coin being the only materially nicer one we could find. One of the highlights of this sale.





197. 1798 S-158 R4 VF25. Style I Hair. Strong VF35 detail, the surfaces show just microscopic roughness under a pleasing glossy dark olive patina. Nice eye appeal thanks to the lack of marks and generally bold strike. E-MDS, Breen state II, showing the early stages of the arcing reverse cracks. A sharp and attractive example of this scarce variety. *Ex CVM – Fred Borchardt.*



198. 1798 S-162 R4 F15+. Style I Hair. Glossy medium brown surfaces with lighter steel toning on the devices. Sharpness essentially VF and there are not many flaws to report – just some light contact marks and a small spot of verdigris on the reverse rim left of the fraction. Well-struck throughout, close to a 20 coin and certainly with the eye appeal of that grade. MDS, Breen state II. Removed from an NGC VF20 holder. *Ex Allen Ross.*



199. 1798 S-163 R4 VG8. Style I Hair. A nice example of the variety from the famous Eliasberg collection. Glossy chocolate and olive brown surfaces that have a pleasing original look. A few minor rim ticks and other small circulation marks on each side, but nothing out of line for the grade. MDS. Removed from a PCGS VG10 holder and the old green label which notes the Eliasberg pedigree is included. *Ex Louis Eliasberg Sr., Bowers & Merena 5/20/1996, lot 603 – Superior 2/2/2000, lot 1647 – Phil Moore.*



200. 1798 S-163 R4 VG7. Style I Hair. Detail near F12 but with lightly porous medium steel brown surfaces. An interesting piece on a planchet that is obviously broader than normal. A full 30mm in diameter, but the weight is normal at 10.9 grams. Appears to have been double struck slightly off center and this caused the planchet to broaden. There is evidence of two set of dentils below the fraction. *Ex Tom Keenan.*

Strong VF Sheldon 165



**201. 1798 S-164 R4 VF20.** Style 1 Hair. An appealing and boldly detailed cent with medium to dark olive brown toning. Sharpness VF25 and the surfaces are predominantly smooth and glossy. A glass reveals trace granularity under the patina, a bit more noticeable on the reverse but not heavy or overly distracting on either side. No marks to note. MDS. Breen state II late, with bulging and die scaling showing on the obverse. *Ex Fred Borchardt.*

**203. 1798 S-165 R4 VF20.** Style 2 Hair. Another great 1798, this one a relatively new discovery and ranks quite high among known examples, perhaps CC5 or 6. Sharpness close to VF30 and the surfaces are a mostly smooth and glossy steel brown and chocolate. A few minor defects including a scratch from the right obverse field onto the cheek and a few more minor hairlines on the portrait. Some small patches of surface red roughness by the date and at 3 o'clock on the reverse. Light rim bruise over the U in UNITED. Overall a nice strong coin that can hold its own among the very best of the variety. *Ex Goldberg's 2/2013, lot 288 – Allen Ross.*



**202. 1798 S-164 R4 VG10.** Style 1 Hair. A couple points sharper, even better on the obverse which retains much hair and drapery detail. Glossy chocolate and olive brown surfaces with just scattered minor pitting. Tiny rim bump at k4 and a few nicks elsewhere, none serious. EDS. *Ex Col. Steve Ellsworth.*



205. 1798 S-166 R1 VG7. Style 2 Hair. A point sharper with just trace roughness on each side. Still an attractive coin for the grade, rather glossy with dark olive fields and lighter steel devices. 98 of the date and opposing area of the reverse are weak due to the die state. Otherwise full detail for the grade.



204. 1798 S-166 R1 XF40. Style 2 Hair. Very strong detail, just about AU in that department as there is little wear to be found. Glossy olive brown surfaces that are rather dark but show only minute localized roughness, even under a 10x glass. There are a few microscopic spots of corrosion in the left obverse field and scattered across the reverse. Also some light porosity at the left side of the wreath, but the vast majority of the surfaces are smooth and pleasing and there are hardly any marks. LDS, Breen state VI. Dies rotated 35 degrees CCW. Ex Tom Reynolds – Walter Reed – Fred Borchardt.



206. 1798 S-167 R1 VF25. Style 2 Hair. Very nice tan brown surfaces with some light olive toning surrounding the reverse devices. Probably lightly cleaned ages ago but that is of no concern today as this cent has retoned fully and attractively. No marks of note. LDS, Breen state V. Ex Jonathan Kern 12/1980 – Rod Burress.



207. 1798 S-167 R1 F15. Style 2 Hair. VF20 detail and decent, recolored deep olive and orangey-brown surfaces. There are just a few small patches of light porosity on each side. An even later die state than the preceding lot, Breen state VI early. *Ex Walter Reed – Fred Borchardt.*



208. 1798 S-169 R3 F15+. Style 2 Hair. Sharpness of VF25 and this is solid example of a fairly difficult variety to locate in better grades. Light porosity scattered about, most noticeable at the lower obverse and around the wreath. The roughness isn't overly distracting as it's underneath a slightly glossy dark olive patina. The only marks are a few short scratches in the field right of the wreath. *Ex Jim Long – Walter Reed – Fred Borchardt.*

209. 1798 S-170 R3 VF35. Style 2 Hair. Lovely chocolate brown surfaces with some warm tan toning in the recesses, particularly on the reverse. Glossy and there is even some subtle cartwheel frost though the reverse legends. Only a couple minor flaws – a small patch of dark roughness at the T in STATES and a similar, more minor spot on the obverse rim at 9 o'clock. Clean surfaces without any distracting marks. Close to XF and should be considered a contender for the top 6 of the variety. *Ex Bowers & Merena 10/1978, lot 84.*



210. 1798 S-171 R4 G4. Style 2 Hair. Light steel brown surfaces that are a bit matte from microporosity but certainly acceptable for the grade. Middle die state with the cud left of LIBERTY but no die crack in the right obverse field. *Ex Don Stoeber.*



211. 1798 S-172 R2 F12. Style 2 Hair. VF20 detail with micro-porous surfaces, but decent two-tone brown color and only minor marks. Bold date and legends. E-MDS with clear clashmarks at the right obverse rim. In an old ANACS VF20 holder. *Ex Dan Demeo.*



213. 1798 S-176 R4 VG10. Style 2 Hair. F-VF detail with some light porosity in the fields and several tiny rim bumps on both sides. Medium brown color and a fairly pleasing example despite the issues. Middle die state. *Ex Fred Borchardt.*



212. 1798 S-173 R3 VF25. Style 2 Hair. Glossy dark olive surfaces and strong VF30 detail. Only light microgranularity in places but there are some horizontal depressions within the wreath where the fields were apparently tooled. Small spot of surface verdigris in the obverse field at 2 o'clock and outside the N in UNITED. Overall an appealing coin. Middle die state with the end over RTY, die rotated 45 degrees CCW. *Ex C. Douglas Smith 11/1981 - Fred Borchardt - Walter Reed - Fred Borchardt.*



214. 1798 S-177 R4+ VG10+. Style 2 Hair. Sharpness on the better side of F15 and the surfaces are a decent, somewhat glossy medium olive brown. There is some light porosity visible with a glass and minor signs of smoothing in the left obverse field. Bold date and legends. A much better than average example of this tough variety. *Ex Tom Reynolds 3/19/1999 - Walter Reed - Fred Borchardt.*



215. 1798 S-177 R4+ G6. Style 2 Hair. VG8 detail and the date and legends are fully visible. Lightly porous steel brown surfaces. Certainly decent for the variety. *Ex Don Stoeber.*



216. 1798 S-177 R4+ G6. Style 2 Hair. Medium brown fields with lighter chocolate devices. Sharpness is VG10 but the surfaces are lightly granular and there is a little bit of raised corrosion on each side. Another respectable piece considering the variety. *Ex COL Steve Ellsworth.*



219. 1798 S-179 R2 F12+. Style 2 Hair. Nearly choice chocolate brown surfaces with great eye appeal for the grade. Just a few tiny peck marks can be found with some searching, but there isn't a trace of roughness. Breen state II. In an NGC VF25 holder. *Ex Dan Trollan.*



217. 1798 S-178 R5+ G4. Style 2 Hair, Reverse of '95 (or '96 if you prefer). Detail at least VG8 and this piece offers more definition than typically seen on this rare variety. All the major design elements are at least outlined except for UNITED which is partially gone. Lightly corroded with some porosity and minor verdigris. High points orange and slightly hairlined from being cleaned. Has its fair share of condition issues, but that's what you expect with 178's.



220. 1798 S-179 R2 VG10. Style 2 Hair. F12 detail with some minor scratches in front of the forehead and a few rough spots on the reverse. Generally smooth light steel and olive surfaces and for the grade, this is a nice example of the date. *Ex Dan Trollan.*



218. 1798 S-178 R5+ FR2+. Style 2 Hair, Reverse of '95 – should be its own *Red Book* variety with this combination, by the way. It's not often you have two S-178's to choose from in one sale. This piece is medium brown and somewhat glossy with just mildly granular surfaces. Rim bump left of the date. Obverse G4 while the reverse is mostly worn – though there's plenty of detail to make the attribution. Quite pleasing for the grade. In a PCGS AG3 holder with the attribution noted on the label. *Ex Shawn Yancey – Dan Demco.*



221. 1798 S-180 R5+ VG8. Style 2 Hair. A sharp example of this rare variety. VF35 by wear or even a little better, but portions of the detail are softened by light porosity throughout. Mottled dark brown and lighter chocolate toning and there are some hairlines at the lower obverse. The darker toning becomes a bit scaly in places especially at the lower left reverse. Very slight bend to the planchet. MDS showing the break over STATES only. *Ex Henry Hettger.*



222. 1798 S-181 R3 VF20. VF35+ detail, the surfaces a partially glossy steel brown but there are patches of reddish corrosion and some raised verdigris on both sides. The eye appeal is still decent and part of the roughness of the surfaces is caused by die rust and not environmental damage. A sharp enough coin to really appreciate the late die state, Breen IV, with lots of obverse die cracks and rim cuds. *Ex COL Steve Ellsworth.*



223. 1798 S-185 R2 F15. Reddish chocolate brown surfaces, the surfaces highly glossy from a thick layer of Care or something similar. Close to VF with just some light nicks and a few spots of red roughness on the reverse. Very late die state, Breen VII, showing thick obverse die cracks and the rim cud over IC in AMERICA. *Ex COL Steve Ellsworth.*



224. 1798 S-185 R2 F12. Another late state example of the variety but this one might be even later as the cracks and flow lines appear a bit stronger and it almost looks like the reverse rim cud extends a bit further up the rim than on the previous lot. F15+ detail with lightly cleaned surfaces and some minor scratches and spots. *Ex Howard Barron.*



225. 1798 S-187 R1 G4. An interesting piece with a small brockage indent at 8:30 on the obverse. LDS, Breen V, with heavy clashmarks and cracks at the lower right reverse but the obverse breaks are indistinct due to uneven wear. Nice light brown surfaces, choice for the grade.

Pleasing Quality 1799/8



226. 1799/8 S-188 R4 VG7. A very decent example of this popular and conditionally difficult overdate. Detail about VG10, the legends complete, just a little weak at S OF, and the date is clear with both 9's fully outlined and the overdate plain. Very light porosity over much of each side. The roughness is not noticeably heavy anywhere and the decent color, slightly glossy finish, and lack of marks all certainly help in the eye appeal department.



227. 1799/8 S-188 R4 AG3+. Another example, this one lower grade but with slightly smoother surfaces. The obverse has full Good detail, the date is 3/4 visible and part of the 8 under the 9 can be made out. The reverse weaker, as is often the case, but about half of the legends are readable and most of the wreath is outlined. Slightly glossy medium brown surfaces with just some light contact marks and trace porosity in parts of the fields. About as nice as could be hoped for in an AG 99 8. In a PCGS AG3 holder.



228. 1799 S-189 R2 FR2+. Solid AG+ obverse with most of LIBERTY and more than half the date visible. Weaker reverse, less than half the detail outlined on that side. Glossy medium brown surfaces with no major problems. In an NGC "Fair details, damaged" holder and it does appear the planchet is very slightly convex relative to the obverse, but there is no other damage related to the bend except for some uneven wear to the reverse. Another well worn but above average '99.



229. 1800/1798 S-191 R2 VF20. Style 1 Hair. Sharpness in the XF45 range with exceptionally strong definition in places. About half the surface is glossy steel brown but there is some less glossy orange-brown patination in the obverse fields and left half of the reverse. There are also some spots of raised corrosion and a few thin scratches on the obverse. VLDS, Breen VII and all the fine details of the die state are visible on the reverse. In a PCGS "AU details" holder. *Ex Walter Mustain.*



230. 1800/1798 S-191 R2 VG7. Style 1 Hair. Solid VG10 detail and glossy medium brown surfaces. There are some thin scratches on each side which account for the net grade. Similar in die state to the preceding lot. *Ex Tom Gesner.*





231. 1800/79 S-192 R3 F15. Style 2 Hair. Glossy deep olive brown surfaces with a few thin, toned-over scratches on each side and some traces of minute porosity in the fields. Strong VF20 detail, especially bold on the obverse. E-MDS, Breen state I late, before the arcing reverse die crack. A nice example. *Ex Kreisberg-Schulman Sale 5/1966, lot 852 – Philip Van Cleave, Kagin's 1/30/1986, lot 5210 – Rod Burress.*



234. 1800/79 S-194 R3 VF20. Style 2 Hair. Strong VF30 detail. Dark olive and steel brown toning with some microscopic granularity underneath the patina. A few little scratches on Liberty's hair, but otherwise clean surfaces. Not perfectly smooth but well detailed and reasonably attractive. MDS, Breen III. *Ex Bowers & Merena 3/1996, lot 261 (as VF25) – COL Steve Ellsworth.*



232. 1800/79 S-192 R3 G6+. Style 2 Hair. A just barely microporous, olive brown coin with VG detail. Couple light scratches within the wreath but only trivial circulation marks otherwise. Clear date and legends and the interesting overdate is plain. E-MDS. Comes with a Grellman card as 8/6+. *Ex Tom Gesner.*



235. 1800/79 S-194 R3 F15. Style 2 Hair. Another solid example of the variety with a similar look and from a similar, just slightly later, die state. Small cut on the rim above E in STATES and the opposing obverse rim. Otherwise free of marks, there is just some faint granularity under the dark olive patina and the obverse was lightly wiped. MDS, Breen III late. *Ex Walter Reed – COL Steve Ellsworth.*



233. 1800/79 S-193 R4 G6. Style 2 Hair. Glossy medium steel brown surfaces with no major defects, just a few circulation marks as expected for the grade. MDS, Breen III, with heavy reverse cracks but no cuds. *Ex Tom Gesner.*



236. 1800/79 S-195 R5 G5. Style 2 Hair. A rare variety, readily identified by the overdate obverse with the last 0 leaning and the reverse with a weak first inside berry on the right stem. Close to Fine detail but some detail is obscured by light to moderate pitting. *Ex Don Stoebner.*



237. 1800 S-198 R5+ G6. One of the key varieties to a set of 1800 cents by Sheldon number. Fine sharpness, the obverse a decent reddish brown with just light pitting while the reverse is more heavily pitted throughout and lightly burnished. Some of the detail on that side is obscured as a result. Not a high grade coin, but high grade isn't really an option for S-198. And if the back were like the front on this one, it would be one of the finest known. *Ex Philip W. Ralls, Goldberg's 1/26/14, lot 602 – Tom Schuler 5/4/14 – Tom Keenan.*



240. 1800 S-202 R4+ VG10. Sharpness around F12, stronger in some areas and weaker in others due to the die state. Generally smooth, medium steel brown surfaces. Reverse scratch at D STA, otherwise just some trivial microgranularity in a few places. M-LDS, Breen state IV. An above average example of both the variety and die state. *Ex Tom Keenan.*



238. 1800 S-200 R3 VG8. Just about Fine sharpness but there is a trace of porosity under the steel brown patina. Rim bruise at 6 o'clock, otherwise clean surfaces. Strong borders and full detail, generally a nice example for the grade. E-MDS, Breen II. *Ex McLoughlin & Robinson 8/1985, lot 244 – COL Steve Ellsworth.*



241. 1800 S-202 R4+ G6. The full-blown terminal die state of the variety, Breen VII, with extreme die swelling on each side and a sizable chip out of the die off the second lowest hair curl. Smooth surfaces, just lightly cleaned and not fully retoned. An impressive die state and quite rare. For some reason, many state V and VI examples are cataloged as state VII when they do not show the final chip out of the die on the obverse. *Ex Howard Barron.*



239. 1800 S-201 R4+ G5. Glossy medium steel brown surfaces. A point sharper with some light rim bumps visible on each side. No corrosion to speak of. Easily attributable and overall a decent example of a very tough variety. *Ex Elite Auction 9/5/2004, lot 449 – Tom Gesner.*



244. 1800 S-205 R4 VG10. Very nice surfaces - clean and glossy light olive brown. M-LDS, Breen state III. Struck on a rather thin planchet weighing just 9.0 grams. *Ex Dan Demeo.*



242. 1800 S-203 R3 VF25. VF30 sharpness, bluntly struck at the upper portrait and opposing wreath, elsewhere quite bold. Glossy reddish steel brown surfaces without any notable marks. Just has a slightly bright sheen indicating an old, light cleaning, but it has almost fully retoned and is pretty attractive. LDS, Breen state V.



243. 1800 S-203 R3 F15. Glossy chocolate brown and orange-tan surfaces. A little bit of microscopic porosity scattered about and some light reverse scratches, but overall a decent cent for the grade. M-LDS, Breen state IV, the dies not quite as clashed and worn as the preceding lot. *Ex Dan Demeo.*

245. 1800 S-206 R3 VF20. Glossy medium brown surfaces with just a few tiny rim bumps on the obverse. Smooth and attractive without any trace of corrosion. MDS. Breen state II. A nice example with a great pedigree. In an NGC VF30 holder *Ex Dupont, Stack's 9/24/1954 - Dorothy I. Paschal - Ray Chatham 1972 - Robinson S. Brown, Jr., Superior 9/1986, lot 301 - Phillip Clover; Heritage 9/6/2009, lot 3227 - Allen Ross*



246. 1800 S-208 R3 VF25. A very sharp S-208 with the detail of a 45 coin, if not a 50. The obverse is chocolate brown with some light porosity and discoloration around the peripheries as well as some faint hairlines over the bust. The reverse has reverse has areas of slightly heavier granularity under a mostly dark olive patina. MDS, Breen state II (though the Breen die state sequence for this variety is not exactly coherent). Not a perfect coin but up there among the best of the variety, especially if you argue a slightly more forgiving net grade, which would be entirely fair.



247. 1800 S-208 R3 F12. Slightly sharper but has some very light roughness in the fields and several dull poke marks on the portrait. Light chocolate brown color with deeper brown recesses. Nice full detail. I.D.S, Breen state IV.



248. 1800 S-209 R3 G4. A well circulated piece but with ideal medium brown surfaces and no problems other than a minor rim bump over the M in AMERICA. Date full and legends readable, just a little worn on their outer edges. *Ex Doug Bird – Tom Gesner.*



249. 1800 S-210 R5+ G6+. VG10 sharpness and overall quite decent for this tough variety. Orangey chocolate brown mixed with darker steel toning. The fields lightly granular and there are some hairlines on each side. Date and legends almost complete, just a little weak at the lower obverse and upper reverse as usual. *Ex Tom Keenan.*



250. 1800 S-210 R5+ AG3. A couple points sharper but dark, lightly granular, and with some spots of raised corrosion. LIBERTY clear while the date and other legends are about half visible. There is evidence of a double strike, centered and slightly rotated, on some of the reverse legends. Comes with a Grellman card as 5/3. *Ex Rod Burress.*

Pedigreed 1800 NC-3



251. 1800 S-211 R3 F15. Solid VF25 detail but has some thin scratches in the right obverse field, on the portrait, within the wreath, and over OF AMERI. Otherwise smooth and slightly glossy deep olive surfaces with lighter highpoints. Strong borders and a generally bold strike make for a fairly pleasing look despite the scratches. MDS, Breen state III early. *Ex Dan Demeo.*

253. 1800 NC-3 R5+ VG7. One of the earliest examples of the variety to be discovered, found not long after Sheldon identified the first in 1947. This is a very presentable piece with strong F15 or better detail. There is some old reddish corrosion built up in the fields, but the devices are mostly a smoother and glossy medium brown. The spike on top of the I in AMERICA that clinches the attribution is obvious. *Ex Donald Ballou - C. Douglas Smith 1/27/56 - Dorothy Paschal 11/1977 - Chalkey Collection, Superior 1/1990, lot 412 - Wes Rasmussen, Heritage 1/2005, lot 3236 - COL Steve Ellsworth.*

Very Rare 1800 NC-2



252. 1800 NC-2 R6+ G5. A tough NC that's not far outside the R7 range. This was the only use of this overdate obverse die and it's quickly identified by a thin cud at the obverse rim from the bust tip up to 3 o'clock. Strong VF detail but dark and lightly corroded throughout. The design elements are still fairly well defined and there's much fine detail to be seen in the hair and wreath. A clear representative of the variety. In a PCGS "Genuine" holder which notes the attribution. *Ex Doug Bird - COL Steve Ellsworth.*



254. 1801 S-215 R4+ G6. A really nice example for the grade despite a single dull scratch in the right obverse field. Otherwise VG and choice with original medium brown surfaces and full detail. EDS, Breen state 1. *Ex Phil Ralls 6/1978 - Rod Burress.*



**257. 1801 S-219 R2 VG8.** 3 Error Reverse. Original medium brown surfaces with some scattered contact marks but nothing troubling for the grade. Generally full detail, just a little bit of weakness in the usual places. M-LDS with fairly thick die cracks on the reverse. All 3 errors are plain. A pleasing example with above average surfaces and color for the variety. In an old ANACS VG8 holder. *Ex John Stephens.*



**255. 1801 S-216 R1 VF30.** Only lightly worn and there are traces of mint frost in the fields. Sharpness VF35, probably lightly cleaned but has retoned a decent reddish olive brown. Several small peck marks on and around the portrait while the reverse is cleaner. Softly struck at LIBERTY and some of the highpoints of the design as is typical and the strike gets even worse in later die states. Overall this is an attractive higher grade example. In an old ANACS XF45 holder. *Ex John Stephens.*

**258. 1801 S-222 R1 F12.** A bold, early die state piece with full borders on each side and no reverse breaks. Lightly cleaned long ago but has almost fully retoned an attractive light olive and tan brown. Trace roughness on the reverse, otherwise just trivial circulation marks. Comes with an approximately 80 year old envelope marked "1801 Perfect Die."



**259. Pair of 1801 Cents.** Includes 1801 S-219 R2 AG3+. 3 Error Reverse. G5 detail but fuzzy from granularity. Together with 1801 S-224 R1 G6. Sharpness F15 but has a cleaned and lacquered obverse. Both coins have small curved planchet clips. Lot of 2 coins. *Ex COL Steve Ellsworth.*

**256. 1801 S-219 R2 F15.** 3 Error Reverse. VF20 sharpness and the surfaces are fairly attractive. There's some light granularity under the glossy dark olive patina, but no marks of any consequence. The three errors on the reverse are all well-displayed, the fraction just a tad weak due to the rather advanced die state. A solid example of this popular variety and quite scarce at this grade level and higher. *Ex Walter Reed Fred Borchardt.*

Elusive 1801 NC-3



260. 1801 NC-3 R6+ G5. Quite sharp, detail probably in the VF25 range, but the surfaces are corroded and were smoothed to minimize the rough appearance. As a result, some detail is blurry, but there is still quite a bit of the coin to appreciate. A rare NC that has just fallen out of the R7 category and almost all survivors low grade. *Ex Henry Hettger.*



263. 1802 S-226 R3 VG7. Medium to steel brown surfaces and close to F12 detail. There is some light porosity throughout and raised black scale at the upper obverse. Strike weakness at the left reverse, otherwise full legends and a clear date. *Ex Don Stochner.*



261. 1802 S-225 R3 F15+. VF20 detail. Glossy olive brown surfaces that were lightly cleaned and show some faded orange color and mottled colorful hues as a result. Couple microscopic spots of reverse verdigris but no real corrosion and overall this is a pleasing cent.



264. 1802 S-229 R2 VG7. A rare late die state example. Breen state VII, with the reverse break over TH in STATES as well as slightly sunken retained cud over AME. A few points sharper, the olive brown surfaces free from marks and serious corrosion, just a bit matte from some microscopic porosity. *Ex Henry Hettger.*



262. 1802 S-225 R3 F12. Glossy light tan and olive surfaces that have nicely retoned from an old, light cleaning. Detail close to V1 but there are myriad tiny contact marks on each side and the planchet is very slightly bent. No corrosion, full detail, and overall a decent looking cent. *Ex COL Steve Ellsworth.*



265. 1802 S-230 R1 F15. Strong VF25 detail but there are some light marks and scattered microscopic roughness. The planchet is also ever so slightly bent, a tad convex relative to the obverse, but the bend is not overly obvious or distracting. Glossy deep brown surfaces with lightly cleaned, orange-brown devices. Well-detailed and fairly pleasing despite its issues. Middle die state. *Ex COL Steve Ellsworth.*



266. 1802 S-232 R1 VF25. Close to 10 points sharper but there are some pinkish highlights to otherwise light steel brown and olive surfaces from a light cleaning. No distracting marks. Overall a nice cent and a great example of the die state, Breen VII, with the cud over AT in STATES. *Ex Jim Long.*



269. 1802 S-238 R4 VG8. VG10 detail. Glossy chocolate brown surfaces with no corrosion, just several tiny marks on the rims and in the fields. Detached lamination below OF on the reverse. Full date and legends. *Ex Don Stoebner.*



267. 1802 S-237 R2 VF20+. A pleasing light olive brown example. Detail slightly higher in the VF range, there are just a few minor marks and a trace of microporosity in some of the protected areas which is visible only with a glass. LDS, Breen state VI. *Ex Dan Demeo.*



270. 1802 S-239 R3 VF25. Close to XF by sharpness but there are a few scratches on the obverse and light granularity in the fields, more so on the reverse than the obverse. Glossy dark brown surfaces with lighter tan highpoints. Late die state with heavy obverse die cracks and reverse clash marks, Breen state V. A well detailed cent and nice example of the die state.



268. 1802 S-238 R4 VF20. Very strong for this scarce variety of which no examples better than VF are known. Close to VF35 sharpness with some of the fine hair detail and leaf veins visible. Dark olive and steel brown surfaces that are partially glossy but have a dusting of shallow microgranularity and light carbon on parts of the fields, most notably within the wreath. M-LDS, Breen IV. Not perfect but an excellent example of the variety, probably among the best dozen or so S-238's. *Ex Tom Keenan.*



271. 1802 S-239 R3 F15+. Light steel brown surfaces, probably retoned from an old cleaning. A glass reveals some patches of trace granularity in the fields and a small pit of verdigris under the A in STATES. A few marks, none serious, including some light rim damage and a couple scratches on the portrait. Strong VF detail. Similar late die state to the preceding lot, Breen V. In a PCGS "XF details" holder. *Ex 1995 EAC Sale, lot 234 - Walter Mustain.*





272. 1802 S-240 R3 F12. Close to VF detail with lightly granular but glossy dark brown surfaces. No distracting marks and the eye appeal is decent. LDS, Breen state IV, with a strong die crack in the right obverse field and clashmarks from AMERICA at the right obverse border. *Ex Walter Reed – COL Steve Ellsworth.*



275. 1803 S-251 R2 VG10. Small Date, Small Fraction. Little poke mark within the 0 of the date, otherwise a solid Fine with nice original light chocolate and steel brown surfaces. EDS. *Ex Don Stoebner.*



273. 1802 S-242 R2 VF30. A very sharp cent with AU50 detail. Both sides were lightly burnished to smooth out some rough patches by the obverse borders and in the reverse fields around the wreath and legends. Recolored to a decent reddish chocolate brown. LDS, Breen state III. An impressive cent despite the imperfections. *Ex Tom Keenan.*



276. 1803 S-252 R2 F15. Small Date, Small Fraction. Solid VF detail. The surfaces generally an appealing glossy medium brown. There is just a little bit of slightly rough darker toning in the fields on each side, less so on the reverse. MDS, Breen state III. *Ex Jules Reiver, Heritage 1/24/2006, lot 28091 – Rod Burress.*



274. 1803 S-249 R2 F12. 1/100 over 1/000 Fraction. Glossy olive and chocolate brown surfaces with some minor porosity in the fields and a few larger pits on the reverse. Better than F15 detail and the “Mumps” feature on the obverse and corrected fraction on the reverse are very bold. *Ex Walter Reed – Fred Borchardt.*



277. 1803 S-255 R1 VF25. Small Date. Small Fraction. A boldly struck coin with XF40 detail. Microporous dark olive surfaces. The only mark is a hairline scratch within the wreath. Has a pretty nice look despite the roughness. EDS.



278. 1803 S-256 R3 VF35. Small Date, Small Fraction. Barely worn, the sharpness easily AU50. Glossy and very dark steel brown surfaces with some patches of microscopic porosity in the fields and a few tiny specks of raised corrosion. Impressively detailed and there is even a trace of cartwheel luster through the reverse peripheries. M-LDS, Breen state IV late.



281. 1803 S-260 R1 VF30. Small Date, Large Fraction. About 10 points sharper and the majority of the surfaces are an attractive glossy light chocolate brown. There are just a few small patches of darker toning as well as some mottled orange color, mostly on the reverse. Not many marks in the fields but there are a few tiny rim bumps, also some hairlines on the portrait from an abrasive brushing and similar ones on small portions of the reverse wreath and rim. *Ex Jim Long.*



279. 1803 S-258 R1 F15. Small Date, Large Fraction. Glossy surfaces with pleasing color – chocolate brown on the obverse and a light olive brown reverse. VF except for a handful of tiny nicks on the obverse. M-LDS, Breen state III. *Ex Rod Burress.*



282. 1803 S-261 R2 VF25+. Small Date, Large Fraction. Sharpness again in the XF range but the surfaces are microscopically porous just about everywhere and there are a few tiny specks of raised corrosion on the obverse. Decent brown color and not totally devoid of eye appeal as the roughness is very light and even, and there are no additional marks or damage. LDS, Breen state V. Removed from an old, green label PCGS VF35 holder and the tag is included. *Ex Walter Reed – Fred Borchardt.*



280. 1803 S-259 R4 VG10. Small Date, Large Fraction. A decent representative of the scarce “Ghost 3” variety. Dark fields contrast nicely with tan devices. The reverse is fairly smooth, just barely microporous in the fields, while the obverse is a bit rougher and has some hairlines across most of the surface. Strong VF detail. FDS, Breen state I. *Ex Walter Reed – COL Steve Ellsworth.*



283. 1803 S-262 R3 F15. Small Date, Small Fraction. VF25 detail and quite boldly struck. A strong example of this surprisingly tough variety. Glossy chocolate brown surfaces with generally good eye appeal. Requires a net grade for some microscopic porosity in the fields as well as heavier localized pitting at the wreath ribbons and a few individual pits elsewhere. MDS, Breen state II. *Ex Walter Reed – Fred Borchardt – COL Steve Ellsworth.*



284. 1803 S-262 R3 VG7. Small Date, Small Fraction. A few points sharper with some sealy red and green build up in the obverse fields and light porosity elsewhere. Full date and legends. *Ex Coin Galleries, 4/1989, lot 1625 - Dan Demeo.*



1803 Large Date, Small Fraction



285. 1803 S-264 R4+ BS1. Large Date, Small Fraction. A famous rarity and always in extremely high demand as a key *Red Book* variety. AG-G detail but both sides are covered with old scratches and the rims are pretty beat up. Most of the large date can be made out, the fraction only partially visible but the characteristic reverse die break and swelling are obvious. Won't win any beauty contests but will fill a hole that not many have filled. *Ex Henry Hettger.*



286. 1803 S-265 R4 VF20. Large Date, Large Fraction. Close to VF35 detail. Glossy surfaces that are a tiny bit porous in the fields but not nearly as much as typically seen on the variety. Pleasing olive and tan brown color, there are a pair of minor rim bumps, one on each side, and some little scratches on the portrait, but nothing too bothersome. Another scarce *Red Book* variety and this is a high quality example. *Ex Bowers & Merena, 11/1998, lot 1097 (as VF25) - COL Steve Ellsworth.*



287. 1803 S-265 R4 G5. Large Date, Large Fraction. VG detail and the date and fraction are both strong. Microporous surfaces and there are some scratches within the wreath which obscure some letters. *Ex M&G 10 2/1993 (Sale #10), lot 93*



288. 1803 NC-1 R5+ VG8. Small Date, Small Fraction. A pleasing piece for the grade and variety. VG10 detail. Steel brown surfaces with some tan on the devices. The obverse rather matte from microscopic roughness, the reverse a bit smooth and glossier, but still faintly granular. Full date and legends, just softly struck on the right reverse legends. *Ex Harold Moore – Rod Burress.*



291. 1805 S-268 R3 F12+. Blunt I. The scarcest of three varieties for the date and rather tough to find in nice grade. Glossy steel brown surfaces with good eye appeal and just a few minor marks. Small curved clip just before 9 o'clock. *Ex Walter Reed – Fred Borchardt.*



289. 1804 S-266a R2 FR2. A well worn but smooth example of this key date. Glossy chocolate brown surfaces. There is a little bit of very minor surface roughness on the obverse and some faint hairlines, but far fewer problems than you would expect for the grade. Date half visible and enough detail remains elsewhere to confirm the attribution. Early die state unless the obverse cud is worn away; there is no reverse break. In a PCGS FR2 holder.



292. 1806 S-270 R1 VF30. An attractive mid-grade example of the date. Glossy dark brown surfaces, the fields contrasted by light chocolate highpoints. No marks to note. If you look hard enough with a glass you will find a few tiny specks of verdigris and some extremely minor granularity in a few places, but the basic description of the coin is "smooth and problem-free." MDS, Breen state II. In an old green-label PCGS VF35 holder. *Ex John Stephens.*



290. 1805 S-267 R1 VG10. Blunt I. Sharpness F15 but there is some underlying granularity. Dark brown fields with lighter highpoints, the obverse glossy, while the reverse is more matte. Bold date and legends. *Ex Don Stuebner.*



293. 1806 S-270 R1 VF30. A very sharp piece struck from a late state of the dies, Breen state IV, with many sets of clashmarks on each side and swelling by the date. Sharpness in the AU50 range, only lightly worn and there is a little bit of flowline luster on the reverse. Both sides were burnished and recolored to a reddish chocolate brown. There is some porosity in the right obverse field, but not much in the way of marks. Thin planchet lamination on the reverse through the fraction. In a PCGS "AU details" holder. *Ex COL Steve Ellsworth.*



296. 1808 S-277 R2 F12+. The first in a run of some very nice Turban Heads in this sale. Glossy chocolate brown surfaces, the reverse a shade darker than the obverse but both sides are attractive and problem-free. There are just a few minor rim bumps, most notably at star 12, but this is a pleasing cent and well above average for the type. MDS. *Ex Jim McGuigan 3 1983 - Rod Burress.*



294. 1807 S-271 R1 VF20. Comet obverse, VF30 detail and a strong example of this popular variety and die state. Lightly granular chocolate and olive brown surfaces that show tool marks in the fields on each side where someone tried to smooth out the roughness. Pretty good eye appeal nevertheless. LDS, Breen state VI late. *Ex Walter Reed - Fred Borchardt.*



297. 1808 S-279 R1 VF25+. Frosty deep brown surfaces with some flowline luster on each side thanks to the advanced die state. No marks of any consequence, just some tiny spots of verdigris sprinkled across the reverse which are not immediately noticeable. Would be a 30 coin otherwise. In a PCGS VF35 holder. *Ex George Ramont - Robinson S. Brown, Jr., Superior 1 1996 lot 383 - COL Steve Ellsworth, Heritage 9 2013, lot 4853 - Allen Ross.*



295. 1807 S-276 R1 G4. Off Center. Large Fraction. A neat piece that was not only struck off center by about 20%, but is also one of those 276's that was struck medal turn, dies rotated 180 degrees. A couple points sharper with granular but slightly glossy dark brown surfaces.



298. 1808 S-279 R1 F15. A rare early die state piece, Breen state I, and a supremely attractive cent for the grade. Glossy light chocolate brown surfaces with warm tan toning in the protected areas. Only trivial marks including a rim bump on the reverse at 12 o'clock. Bold, complete detail on each side. In a PCGS VF20 holder.



301. 1810/09 S-281 R1 F15+. Deep brown surfaces that are glossy and attractive. No real flaws, just a tiny scratch by the eye and a few specks of roughness within the wreath. LDS, Breen state IV. In an old green-label PCGS VF20 holder. *Ex John Stephens.*



299. 1809 S-280 R2 G5. Fairly early die state so that the date is bold instead of being drawn into the rim. VG detail with dark, lightly granular surfaces and cleaned highpoints.



302. 1810/09 S-281 R1 F12. Glossy dark olive surfaces that are just barely microporous, but mostly appear smooth. Handful of tiny nicks on each side. Bold date and legends. E-MDS, Breen state II. *Ex Dan Demeo.*



300. 1810/09 S-281 R1 VF20. Very sharp, close to AU detail and fully of that grade on the obverse. Lightly granular surfaces that aren't overly dark but a mottled mix of light chocolate and deeper olive brown. Decent eye appeal thanks to the impressive definition and lack of damage beyond the roughness. M-LDS, Breen state III.



303. 1810 S-284 R3 F12+. Attractive surfaces with mottled chocolate and deep reddish brown color. No problems, just a little bit of surface dirt in some of the details. In a PCGS F15 holder.

Sharp 1811/0 Cent



304. 1810 S-285 R2 VF20. 5 points sharper with some specks of old black corrosion on the reverse – just on top of the surfaces, not pitted into. Otherwise glossy brown surfaces with good eye appeal and no serious marks. In an NGC VF35 holder.

305. 1811/0 S-286 R3 VF25. A boldly detailed and attractive example of this scarce overdate variety – probably one of the scarcest die varieties of the whole Turban Head type. Sharpness close to XF but the fields were carefully burnished, a bit more so on the obverse where Liberty’s face was also smoothed. Burnishing seems to be a description that comes up rather frequently with higher grade examples of this date as well as few other Turban Head’s (1809 comes to mind). Given the rough planchet quality of the type in general, it’s not surprising. Perhaps coins such as this were smoothed by early coin dealers who lacked examples of these scarce dates for their “fine” large cent date sets which were a common numismatic product back in the day. But back to this coin – each side is glossy and mark-free. Recolored but nicely so to a reddish medium to dark chocolate. A really high quality example despite the qualifiers and has quite an appealing “look.” Should be carefully considered. *Ex Stack’s Bowers 10/2014, lot 3311 – Bill Eckberg.*



306. 1811/0 S-286 R3 VF20. Another sharp example that was lightly smoothed. VF30 detail with glossy, light olive and steel brown surfaces. There are a few minor scratches and a couple small spots of brick red roughness. Also some very faint greenish patina through the right sides stars. The smoothing was lightly done and is mostly evident on the face and less so in the obverse fields. A meaty example with nice eye appeal despite the noted drawbacks. *Ex Yesterday's Change, Richmond VA – Henry Hettger.*



308. 1811 S-287 R2 VF20. Glossy light chocolate brown surfaces which is an unusual description for an 1811 Large Cent. Very minor rim disturbance at 11 o'clock and the opposing reverse border, but otherwise quite choice with no hint of corrosion or other defects. MDS, Breen state III. *Ex CVM – Charles Barasch.*



307. 1811/0 S-286 R3 VG10. A third and final example of the 1811 overdate. Strong F sharpness, the surfaces just microporous under a matte dark olive brown patina. No distracting marks and all the major detail is clear including a bold overdate. *Ex Charles Barasch.*



309. 1811 S-287 R2 VF20. Another nice example of the date with glossy medium brown surfaces. Close to VF25 if not for some light orange-red roughness at stars 8-10, within the reverse wreath, and at AMERICA. Similar die state to the preceding lot.





310. 1812 S-289 R1 VF20. A well centered and nicely struck piece with glossy light olive brown surfaces. No defects to report. EDS, Breen state I, with repunching at the date.



311. 1812 S-290 R1 XF40. A very sharp cent with hardly any wear. AU55 detail, lightly cleaned and nicely recolored medium olive brown with some mottled reddish-orange subtly visible. Mostly smooth and glossy but there are a few areas of light corrosion and signs of smoothing outside the obverse stars by the dentils. Removed from an NGC "UNC details" holder. *Ex Schwartz George Ramont 2/17/1995 - Jules Reiver, Heritage 1/2006, lot 19653 - Allen Ross.*



312. 1813 S-292 R2 VF30. Nicely struck from an early state of the dies. Glossy surfaces with mottled light chocolate and medium brown toning. Just a few contact marks scattered about and there is some orange color seen around the central reverse details, apparently from a very old cleaning. A highly attractive cent overall and one of the more challenging Turban Head dates to find so. *Ex Walter Reed - Fred Borchardt.*



313. 1813 S-292 R2 F15. Sharpness VF30 or even better but the surfaces are lightly porous under a glossy dark olive patina. Late die state with weakened peripheral detail that has been drawn into the rim. *Ex COL Steve Ellsworth.*



314. 1813 S-293 R2 VF30. AU50 detail, a very sharp piece with a crisp strike from early dies. Fairly smooth light olive and steel surfaces, probably retoned this way from an old cleaning. There are many tiny nicks scattered about and a larger one beneath the first digit of the date which apparently caused a slight bend to the planchet at that area. An impressive piece despite the minor problems and because it's so sharp and so early, it's a good coin on which to search for the mythical "1813/2" overdate as described by Wright and Breen. I feel like I can almost see a trace of the curve of the 2 left of the 3, but that may just be wishful thinking. *Ex COL Steve Ellsworth.*



315. 1813 S-293 R2 G5. Smooth, original medium brown surfaces. A nice example for the grade. Date a bit weak near the rim due to the late die state, otherwise full detail.



316. 1814 S-294 R1 VF20. Crosslet 4. Sharp XF45 detail but lightly cleaned and there was some repair work done to the field and border above the portrait and the opposing field and dentils on the reverse, probably to fill a hole. Otherwise smooth, glossy light olive and reddish brown surfaces that offer a lot of detail. *Ex Bud Lee – Dan Trollan.*



317. 1814 S-295 R1 VF35+. Plain 4. A very nice example with frosty deep brown surfaces and flowline luster on both sides. The only mark is a tiny scratch on the cheek, but this coin's easily deserving of the "choice" label regardless. LDS, Breen state X. In an ICG XF45 holder. *Ex Dan Trollan.*



318. 1814 S-295 R1 F15. Plain 4. Sharpness near VF30 but the surfaces are lightly porous. Thick, dark toning over most of the coin with lighter tan on some of the devices. A good example of this very late die state, Breen state XIII, with advanced crumbling under Liberty's (aka "the bearded goddess") chin and a clear rim cud over the D in UNITED.



321. 1816 N-3 R4 XF40. A very attractive piece, in the upper echelon of survivors of this scarce variety. Glossy surfaces with mottled chocolate brown and deeper olive toning. There are a few microscopic specks of roughness on some of the darker toning, but they take some scrutiny to find. Traces of frosty luster on each side. Nicely struck E-MDS. *Ex Rod Burress.*



319. 1816 N-1 R4 VF25. Glossy surfaces that have some patches of light porosity. Mottled medium brown and lighter chocolate toning. A tough variety to find in this grade and this one has pretty good eye appeal even though it's not perfectly smooth. MDS. *Ex John Nicholas, Superior 10/7/1991, lot 817 - Phil Moore.*

322. Pair of scarce Middle Date varieties, 1816 & 1827. Includes 1816 N-3 R4 VG7. Sharpness F15 but lightly granular and cleaned. Together with 1827 N-12 R5 AG3. G6 detail but dark and rough. Lot of 2 coins. *Ex Henry Hettger.*



323. 1817 N-1 R4 VF30+. Deep olive brown surfaces with traces of frosty flowline luster through the peripheries on each side. A strong 35 coin or slightly better but there are many tiny contact marks on each side and a spot of minute roughness under star 6. Still very attractive and an excellent example of the variety. MDS.



320. 1816 N-2 R1 AU50. Frosty medium brown with lighter tan toning in the protected areas. Just barely worn and there is some cartwheel luster on each side. A nice original cent with very few marks. LDS, rim cuds from stars 8-12 and the dies are rotated almost 90 degrees CW. In an NGC AU58 holder. *Ex John Stephens.*



324. 1817 N-2 R3 VF30. Glossy chestnut brown surfaces with lighter orangey-chocolate toning on the highpoints. No corrosion, just some old dirt caked into the details. Couple tiny rim ticks but no serious marks. A nice example. M-LDS with the bisecting reverse die crack and the obverse crack from the bust tip is faintly visible. *Ex Henry Hettger.*



326. 1817 N-7 R3 VF35. 10 points sharper and quite pleasing despite having a dusting of microscopic porosity in the fields. Fairly glossy dark olive surfaces, mostly free of marks, there is just a light scratch on the neck. MDS, with a large "mouse" break on top of the head. *Ex Jim Corrado 9/1974 – Rod Burress.*



325. 1817 N-3 R2 AU55. A lovely cent with lots of frosty cart-wheel luster covering each side. Deep steely-brown with tan toning highlighting the devices. Just a touch of friction on the highest details, very near mint state. There is a small planchet lamination on the rim outside star 1 which catches the eye but is as-struck. Only trivial abrasions otherwise including a thin scratch before the nose and a couple at the top and bottom of the reverse. MDS showing a thin outline of the "mouse" break on top of the head. Has a fine, old provenance. *Ex Hillyer Ryder – Thomas Elder 2/25/1909, lot 147 – Thomas Warfield, Associated Coin Auction Co 10/28/1955, lot 421 – Willard C. Blaisdell – Del Bland – Robinson S. Brown, Jr., Superior 9/30/1986, lot 459 – R.E. Nafziger – Herman Halpern, Stack's 3/17/1988, lot 302 – Jim Neiswinter.*

327. 1817 N-9 R2 VG8. **Reverse Brockage.** A neat brockage example which circulated quite a bit judging by the reverse, but the brockage side is very well preserved and visually striking. Nice chocolate brown color with darker recesses. A little roughness and light scrape on the regular reverse side. *Ex Jim McQuigan – R. Tettenhorst, Goldberg's 9/19/2010, lot 441 – Bill Eckberg.*



328. 1817 N-13 R1 XF40. Nearly choice surfaces and nicely struck from an early state of the dies. Glossy medium brown with some mottled tan and deeper steel toning on the obverse. Subtle frosty luster on each side, especially the reverse. As-struck low spot at C in CENT caused by grease on the die. Only trivial abrasions. *Ex Ray Rouse.*



331. 1818 N-1 R2 VF35. Glossy light olive brown surfaces. Close to XF but the type of gloss suggests a light cleaning. Attractive nevertheless and has very few marks. M-LDS with clash-marks and rim crumbling starting to show at star 4. *Ex Bowers & Merena, 11/1994, lot 3410 – COL Steve Ellsworth.*



329. 1817 N-14 R1 AU55. A lustrous and attractive example of this Randall Hoard variety. Frosty surfaces with steely chocolate brown color and some splashes of orange-tan and olive toning on the obverse. Close to mint state with just a trace of friction and several little contact marks. M-LDS and softly struck in the usual places. In an NGC MS62BN holder. *Ex John Stephens.*



332. 1818 N-1 R2 VF30. Nearly choice chocolate brown surfaces. Just a few tiny peck marks can be found with a glass. LDS showing advanced rim crumbling at star 4. A lovely cent for the grade.



330. 1817 N-17 R4 VF20+. Sharpness VF30, steel brown surfaces that are just a tad microporous. No major marks and the eye appeal remains decent. M-LDS with advanced reverse die cracks but no sinking above TAT in STATES. A nice grade for one of these. *Ex Tom Keenan.*



333. 1818 N-2 R4 G5. Glossy light olive and steel surfaces that have some trivial granularity in the fields and were probably lightly cleaned, but for a Good, this is a more than acceptable cent. LDS, full cud over UNITED. *Ex Don Weathers – COL Steve Ellsworth.*



334. 1818 N-3 R3 VF35. A very sharp, light olive brown example with close to AU detail. Lightly cleaned and there are some faint hairlines and trace porosity in the fields. Some minor nicks scattered about, but still a strong example and the naked eye appearance is pleasing. MDS. *Ex Richard Stouffer – COL Steve Ellsworth.*



337. 1818 N-5 R3 VF30+. Strong, nearly XF45 detail, but recolored and there are some tiny nicks and light roughness at the central reverse. Glossy reddish-brown obverse and the reverse is a glossy darker olive and reddish-brown. M-LDS.



335. 1818 N-4 R4 VG8+. Quite nice in terms of color and surfaces compared to the typical 1818 N-4 in this grade. Would be a couple points better if not for some rim bumps, scattered light nicks, and a reverse scratch. Glossy medium brown with no corrosion. Fairly early die state, just a hint of obverse swelling. *Rod Burress.*



338. 1818 N-7 R1 XF40. Attractive chocolate and warm tan-brown surfaces with subtle traces of mint frost in the fields. Only minute contact marks. A nearly choice cent. MDS. *Ex Ray Rouse.*



336. 1818 N-4 R4 VG7. Another example with more typical but still decent surfaces. Rather dark steel brown with chocolate highpoints. Lightly porous fields, slightly glossy on the obverse, more matte on the reverse. Full detail for the grade and only a few minor marks. Similar early die state to the preceding lot. *Ex Tom Reynolds 1986 – Dennis Mendelson, Superior 1/1991, lot 254 – Phil Moore*



339. 1818 N-8 R3 XF40. Very early die state, one of the earliest we've seen. The strike is extremely bold, the die crack through the stars only faint, and the dentils clearly crisp and new. Close to AU detail but there are traces of fine roughness in the fields. Dark steel, possibly recolored, but still attractive. An interesting example.



340. 1818 N-8 R3 VF35. Another sharp piece, this one a later die state. Barely worn, sharpness probably AU55, but the surfaces are very dark and covered with light verdigris on each side. Still partially glossy and the sharp definition makes this a good example of the die state. *Ex COL Steve Ellsworth.*

342. 1819 N-4 R3 VF25. Small Date, Close Stars. 5 points sharper but lightly cleaned and there are some hairlines in the fields, most notable at the left obverse. Pleasing light olive brown color and glossy surfaces, not a bad example at all of a fairly tough variety. *Ex Ray Rouse.*

Choice 1819 N-3



343. 1819 N-6 R1 VF35. Small Date. A wild looking coin, cleaned and retoned to a golden olive brown with vibrant rainbow toning around the peripheries. Has the type of color you might expect to see on an album-toned early silver coin. Not natural for a large cent, but still pretty to look at. *Ex COL Steve Ellsworth.*



341. 1819 N-3 R3 AU50. Small Date, Close Stars. A beautiful example. Light chocolate brown surfaces with nearly full cartwheel luster in the fields. Just a touch of wear on the high-points. No marks of any consequence to be found. M-LDS. Both the "Close 3" varieties are scarce in high grade and rarely come looking like this. *Ex John Stephens.*

344. 1819 Novelty Token "Large Cent". An interesting large cent style token of the sort we have not seen before. Close to 34mm, medal turn, struck in bronze that has been made to look nicely aged. Perhaps a novelty reproduction made in the last 50 years to sell in gift shops or the like; but I believe there is a distinct possibility this is actually a genuine 1819 U.S. large cent from a parallel universe, and probably unique as such. **Donated lot, all proceeds to EAC.** *Ex Ray Rouse.*

Unpublished Die State



345. 1820/19 N-1 R1 F12+. Large Overdate. A fascinating example showing bold clashmarks on each side. The reverse wreath and ribbon are clashed around the portrait, most notably before the eye and under star 7. Even more dramatic clashing seen within the wreath where almost the entire outline of an inverted Liberty head can be clearly seen. No mention is made of this clashed state in Wright, Noyes, or any of the many catalogs we surveyed. This is either the terminal state of the dies or else the clashmarks were quickly lapped away. Either way, an extremely rare die state and it's a wonder no other example has been described considering how obvious the clashmarks are. The coin itself is a nice original medium-brown.



347. 1820 N-4 R4 F15. Small Date. VF detail, but lightly granular under the dark steel brown patina. Just a few tiny marks, none distracting, and this cent has decent eye appeal for the grade. E-MDS. *Ex John Wright 6/1976 – Rod Burress.*



348. 1820 N-6 R4 VF20+. Small Date. Glossy medium brown surfaces with some tan toning mixed into the reverse. Very nice for the grade, nearly choice, there is just a single nick under star 9 that bears mention. Nicely struck EDS. *Ex Jim Corrado 8/1981 – Rod Burress.*



346. 1820 N-4 R4 VF30. Small Date. Bold detail, the sharpness XF40. Very dark olive surfaces, the majority of which are smooth and glossy but there are some areas of minor reddish roughness and a few specks of raised, green corrosion. One of the scarce 1820 varieties and this is a strong example. EDS. *Ex Henry Hettger.*



349. 1820 N-9 R3 VF30. Large Date. Attractive light brown obverse and mottled chocolate and tan reverse. Glossy original surfaces without any hint of corrosion and only microscopic marks. E-MDS. A nice example of a tough variety to find in high VF and better.





350. 1820 N-11 R2 XF45+. Large Date. Original tan and chocolate surfaces that have clearly never been messed with. Noticeable luster in the fields on each side and only light wear on the highpoints. There are a few spots of darker brown toning, but no roughness or verdigris, just a little bit of dirt in the details. EDS. Not a scarce variety overall, but tough in high grade. This piece ranks high in terms of grade and very high in terms of eye appeal. In a PCGS AU55 holder. *Ex Tom Keenan.*



351. 1820 N-12 R3 VF25. Large Date. Strong XF detail but cleaned. The obverse still mostly bright orange, the reverse about half orange, the peripherics having toned down to a deep olive brown. Deserves a proper recoloring. *Ex COL Steve Ellsworth.*



352. 1820 N-13 R1 MS64+. Large Date. A variety heavily represented in the Randall Hoard and while mint state examples are common, pieces with this kind of mint red stand out from the crowd. Retains at least 80% of its original color, the highpoints just barely toned down to steel brown. Intense cartwheel luster on each side sweeps over essentially unabraded surfaces. All that's keeping this cent from a full Gem grade are a few dark toning spots in the fields and trace carbon in the spot behind the curls and above the wreath, but these spots are visually overwhelmed by the bright mint red and dazzling luster. In a PCGS MS64RB holder. *Ex John Stephens.*



353. 1821 N-1 R1 VF25. A well struck, early die state example with glossy and pleasing deep olive and steel brown surfaces. Just some minor contact marks in the fields, none individually severe. A nice example of this popular, low mintage date. *Ex Ray Rouse.*

356. 1822 N-7 R3+ F15. A later die state than the preceding lot with only a trace of the leaf under the C in AMERICA remaining. At least 10 points sharper but the surfaces are lightly granular under a somewhat glossy steel brown patina. Bold detail and no major marks. *Ex COL Steve Ellsworth.*



354. 1821 N-2 R1 VG10. Fine detail but there are some spots of verdigris on the obverse and several small nicks on each side. Glossy reddish brown surfaces. *Ex COL Steve Ellsworth.*

357. 1822 N-8 R4 F12. Strong VF detail but the surfaces are quite dark and lightly granular throughout, heavier on the reverse than the obverse. No major marks. EDS. *Ex COL Steve Ellsworth.*



355. 1822 N-7 R3+ VF20+. Sharpness close to VF30 but there is some very light porosity in the fields, most noticeable is a patch above the portrait. A couple of minor rim bumps, otherwise just microscopic marks. Glossy medium brown and a decent looking coin despite the issues.

358. 1822 N-9 R5- F12. VF20 detail. A respectable example of this rare variety. Light steel brown surfaces that show areas of light porosity in the fields. No distracting marks and decent eye appeal overall. EDS, showing only the same reverse die cracks as on its previous use with N-8.



359. 1822 N-11 R2 AU50. A sharp cent with hardly any wear and nice chocolate brown color. Mostly just glossy and attractive though there are a few small areas of very light roughness – on the rim by star 5 and sprinkled across the reverse. Fairly early die state with only minute signs of die rust and slightly reflective fields.



362. 1823/2 N-1 R2 VF20. Overdate. A sharp example of this key date with solid XF detail. Mottled olive and reddish brown surfaces with light porosity covering much of the fields. Just a couple nicks on each side, none severe. *Ex COL Steve Ellsworth.*



360. 1822 N-12 R4 VF25. A good 10 points sharper, the dark olive brown surfaces show some light roughness in the fields, mostly on the reverse, and there is a rim bump over star 6. Most of the coin is reasonably glossy and this is overall a decent, well detailed example of a scarce variety. *Ex Superior 5/2005, lot 1566 - COL Steve Ellsworth.*



363. 1824/2 N-1 R1 VF20. Overdate. A sharp coin, at least XF40 by detail but the surfaces are lightly granular throughout under the dark olive brown patina and there is a patch of reddish build up at the top of the reverse. A few tiny nicks on each side but nothing serious in the way of marks. Nicely struck E-MDS. In a PCGS "AU details" holder. *Ex COL Steve Ellsworth.*



361. 1822 N-13 R5 VG8. The second rarest variety of the date and typically found in VG and lower grades. This is a lightly rough but reasonably pleasing example with Fine detail. Chocolate brown color and no major marks. *Ex Rod Burress.*



364. 1824 N-2 R2 VF35. Very attractive glossy medium brown surfaces with lighter chocolate toning mixed in. Only trivial marks including a couple tiny nicks on the cheek from the dentils of another coin. No trace of granularity and there is a bit of frost at the peripheries. MDS. *Ex Phil Moore.*



365. 1824/2 N-5 R4 VG10. Overdate. The scarce overdate and toughest 1824 variety. Better than average example with close to F12 detail and glossy medium brown surfaces. The only defect is a collection of microscopic tick marks on the cheek. LDS with clear crumbling at the dentils from stars 2 to 5. *Ex Clarence Denton - Garry Perkins 2/1978 - Rod Burress.*



368. 1825 N-9 R2 VF25. 10 points sharper with some light microporosity under glossy, recolored deep brown surfaces and portions of the obverse rim were smoothed down. No marks in the fields and decent eye appeal despite the problems. *Ex COL Steve Ellsworth.*



366. 1825 N-1 R4 F15. Sharpness VF35, portions of the dark olive brown surfaces are lightly granular while others are closer to smooth. No marks to report. EDS. In a PCGS XF details holder. *Ex COL Steve Ellsworth.*



369. 1825 N-10 R3 VF25. An attractive piece with just a few tiny spots of verdigris in the fields. VF30 detail, nice contrasting toning, deep olive brown and steel in the background and lighter olive-tan highpoints. Subtle frost through the reverse legends. *Ex Kagin's 2/1987, lot 4050 - Superior 1/1990, lot 656 - Phil Moore.*



367. 1825 N-8 R3 VF30. A solid 40 coin by sharpness, the deduction is for some light rim damage on each side. Otherwise clean, pleasing surfaces with chocolate and olive brown toning. MDS. *Ex John Pijewski 5/5/2012 - COL Steve Ellsworth.*



370. 1826 N-5 R2 VF25+. Sharpness at least VF35 but there is some dark scale in the reverse fields and a very slight bend to the planchet. Glossy olive brown surfaces with no notable damage or marks otherwise. MDS. *Ex COL Steve Ellsworth.*



371. 1826 N-6 R2 XF40. Just barely worn, has strong AU55 detail but something was removed from the left obverse field and there hairlines and darker toning in that area as a result. Perhaps it was just that someone didn't like the die rust that develops there. There are also small patches of not as noticeable hairlines on the reverse at 5 and 9 o'clock, apparently to remove the minor planchet laminations in those areas. A nice reddish-brown cent otherwise with some luster on the reverse. E-MDS. *Ex COL Steve Ellsworth.*



374. 1826 N-9 R3 XF40+. An attractive cent, the obverse very lightly cleaned at some point and has retoned to a golden olive color. The reverse is frosty chocolate brown. Only minute contact marks. MDS. *Ex Bowers & Merena 11/1999, lot 362 - COL Steve Ellsworth.*



372. 1826 N-6 R2 XF40. A nice chocolate brown cent that is just a bit bright in the fields from a light wipe. Only microscopic marks and there is some remnants of mint frost through the peripherics on each side. MDS. *Ex Ray Rouse.*



375. 1827 N-7 R3 VF30. Closer to XF detail. The surfaces are rather dark but fairly glossy with just trace microporosity in a few places and some minor corrosion built up in some of the details. Just a handful of trivial marks, none noteworthy. *Ex Harry Repman 6/1971 - Jules Reiver, Heritage 1/2006, lot 19882 - COL Steve Ellsworth.*



373. 1826/5 N-8 R1 VF25. Overdate. An early die state example with relatively clear repunching on the 6. 5 points sharper with decent and mark-free dark olive brown surfaces. There is just some very minor porosity to be found in the fields.



376. 1827 N-9 R3 XF40. A scarce variety and tough to find at this grade level. Strong XF45 detail, dark color but no real roughness or corrosion to be found. A few faint scratches are noted in the left obverse field. A fairly early die state and well struck.



377. 1827 N-12 R5 VG7. Close to Fine detail but there is some granularity scattered across the planchet, strongest at the right side of the obverse. Two thin scratches bisecting the obverse. The nice medium brown color redeems the eye appeal to some extent. The scarcest variety of 1827 and the only one that can rightly be called rare. EDS. *Ex Rod Burress, purchased at a 1972 Greenhills Coin Show.*



380. 1828 N-8 R3 VF25. A pleasing example of a tough variety. Slightly glossy medium olive and steel brown surfaces without any notable marks. There are just some faint traces of orange toning from a long ago cleaning. E-MDS.



378. 1828 N-4 R4 F15. Slightly sharper and very choice aside from a few nicks around ONE CENT. Otherwise smooth surfaces with ideal light chocolate brown color and great eye appeal. Not a huge amount of finer examples exist for the variety.



381. 1828 N-8 R3 G4+. Rare terminal die state with the cud break over ITED. Very nice chocolate brown surfaces except for a round dig at the center of the reverse. Comes with a Grellman card as 6/4+. *Ex Sam Thurman - Gary Hahn.*



379. 1828 N-6 R1 VF30. Sharpness XF45 or so and at first glance this is choice, sharply struck cent. Close inspection of the obverse reveals some of the hair and star details were very expertly strengthened and the fields and portrait lightly burnished. Nice glossy medium olive brown surfaces otherwise. MDS. *Ex Stack's 6/18/1986, lot 658 - COL Steve Ellsworth.*



382. 1828 N-9 R4 VF30. Glossy medium brown surfaces. Very nice in spite of some planchet delaminations at star 4 and a thin scratch under UNITED ST. E-MDS. *Ex Dayton's Minneapolis, MN 1974 - Rod Burress.*

Census Level 1828 N-12



383. 1828 N-12 R3+ XF40. Sharpness AU50 but cleaned and recolored. The obverse came out a fairly attractive olive brown and has reflective luster with some colorful iridescence. The reverse is a more splotchy mix of olive and dark brown with less luster and a few spots of roughness. No major marks and the eye appeal remains decent despite the imperfect toning. EDS, earlier than most seen with a very thin reverse crack. A noteworthy example of this condition sensitive variety. The census includes the near mint Naftzger coin followed by the ANS XF and then several high VF's. This coin is a new discovery and will rank high no matter how strict your net grade.



384. 1829 N-4 R4 VF30. Large Letters. Another cent that isn't perfect but represents considerable quality for the variety. Sharpness XF40, the surfaces a frosty light steel brown but show signs of smoothing in the fields, most notable before and above the portrait and below the wreath ribbon. M-LDS with advanced but not terminal obverse rim crumbling. Much better than average strike.



385. 1829 N-7 R3 VF20. Large Letters. Sharpness higher in VF range, impossible to tell exactly due to the typical blunt strike, but there are traces of cartwheel frost in the reverse legends so that will give you an idea. Lightly cleaned and the surfaces are a tad bright, but retoning a fairly attractive light steel brown with some subtle colorful accents. The classic terminal die state with all of the "wheelspoke" cracks on display. *Ex John Pijewski 11/11/2011 - COL Steve Ellsworth.*



386. 1829 N-7 R3 F15. Large Letters. A nice example of the intermediate, "4 spoke" reverse die state. Glossy medium brown and olive surfaces, the reverse with just a touch of microporosity. *Ex Fred Truex.*



387. 1829 N-8 R1 VF30. Large Letters. XF40 sharpness but the dark steel brown surfaces are just uniformly microporous. Decent eye appeal though thanks to the bold detail and lack of marks. *Ex David Bloom - COL Steve Ellsworth*



388. 1829 N-9 R4 F15. Small Letters. Quite nice for the grade. Glossy medium brown surfaces whose only flaws are a tiny rim nick above star 5 and another over ST of STATES. Typical blunt strike. Ex Jack Robinson, Superior 1/1989, lot 897 - Phil Moore.



391. 1830 N-7 R3 VF20+. Large Letters. Choice glossy light tan brown surfaces. An ideal cent in every respect except for maybe the blunt strike - but that's typical for the variety. Ex Tom Keenan.



389. 1830 N-6 R4 VF25. Small Letters. Solid XF detail, and the strike is better than average. There is some light porosity and minor verdigris at the upper obverse and less so elsewhere. The reverse is smoother with only a little microporosity scattered around. A sharp example of this scarce and popular *Red Book* variety.



392. 1830 N-10 R4+ VF20. Large Letters. Rather dark olive brown surfaces with subdued gloss due to very light microporosity in the fields. No marks though and quite pleasing overall for the variety. MDS, with a retained cud over STATES.



390. 1830 N-7 R3 VF25. Large Letters. Smooth and attractive medium brown and light chocolate surfaces without any distracting marks. Some of the highpoints were likely very lightly cleaned at some point but there are no hairlines or the like. M-LDS with the typical weak strike. A strong example of the variety - very few grade better than VF.



Choice Fine 1830 N-11



393. 1830 N-11 R5 F12+. Large Letters. A remarkably nice example of this very tough variety that usually comes dark, rough, and well worn. Original chocolate brown surfaces with no roughness, just a pair of very minor rim bumps, one before the date and one over O in OF. Typical die state and the smooth surfaces display the clash marks and cracks very well. This one should excite strong bidding activity. *Ex Jim Long.*

394. **Pair of rare varieties, 1830 & 1835.** Includes 1830 N-11 R5 G5. F12 detail but probably dug example with light corrosion and verdigris on each side. Together with 1835 N-18 R5 G4. Sharpness G6, mostly smooth brown but with several nicks, some heavy. Both have clear dates and are easily attributable. Lot of 2 coins. *Ex Mike Packard.*



395. 1831 N-2 R2 VF30. Small Letters. Sharpness close to XF and an attractive cent. Just lightly cleaned and there are some faint hairlines in the fields. The highpoints have mostly toned back down to a light olive tan color. E-MDS. *Ex Jules Reiver; Heritage 1/2006, lot 28216 - COL Steve Ellsworth.*



396. 1831 N-8 R3 G6. Large Letters. The rare terminal die state with a strong cud at 9 o'clock on the reverse. VG detail with dark, lightly granular surfaces. *Ex Gordon Wrubel 8/13/1969 - Jules Reiver; Heritage 1/2006, lot 19955 - COL Steve Ellsworth.*

397. **Trio of Middle Date Large Cents, 1831 & 1833.** Includes 1831 N-3 R1 VF25. Small Letters. XF sharpness but dark and microporous. 1831 N-5 R3 F12. Small Letters. VF detail but dark and lightly granular. Together with 1833 N-5 R1 VF20. Sharpness VF25, netted for contact marks. Lot of 3 coins. *Ex COL Steve Ellsworth.*



398. 1832 N-3 R1 AU50. Sharpness near mint state and the surfaces are clean and attractive. Nicely recolored to a reddish chocolate brown and there are just extremely faint traces of hairlines on the obverse. Sharply struck E-MDS. Interesting machine doubling on the right side stars and right side reverse legends. A pleasing and very sharp cent. *Ex Goldberg's 2/16/2001, lot 720 - COL Steve Ellsworth.*



399. 1833 N-1 R2 VG7. **Double Struck.** A neat piece that shows a second strike about 90% off center. The small section of dentils from the second strike is bold as well as the bottom edge of the last 3 of the date and bottoms of ES in STATES on the reverse. Glossy, woodgrained medium brown with just a little bit of rim damage.



402. 1834 N-5 R4 VG8. **Large 8, Large Stars, Medium Letters.** Another example, this one also pleasing for the grade. No corrosion or major marks. Was lightly cleaned a while ago and has mostly retoned, but there is still a little bit of orange mixed in with the brown. *Ex Tom Keenan.*



400. 1833 N-6 R1 AU50. A lustrous cent with AU58 detail. Lightly cleaned but retoned to a nice golden tan. Few rim nicks visible on the reverse. LDS with a chip out of the die at the N in UNITED. *Ex COL Steve Ellsworth.*



403. 1835 N-3 R3 VF20. **Small 8.** Glossy deep olive brown surfaces with just a tiny bit of build up in some of the details. No distracting marks and decent eye appeal. A useful example of a variety that has a surprisingly small amount of high grade examples known. *Ex Henry Hettger.*



401. 1834 N-5 R4 F15. **Large 8, Large Stars, Medium Letters.** The scarce and always in demand 1834. This is a near choice example for the grade with glossy medium brown surfaces that have subtle woodgrain tone on each side. Only small contact marks, no more than you would expect for a Fine. *Ex Fred Borchardt - Dick Punched 11/1984 - Rod Burress.*



404. 1835 N-4 R4+ F15. **Small 8.** A nice original cent and a very tough variety. Light brown overall, the toning a bit uneven but it appears to be a sort of woodgrain pattern natural to the planchet. A few darker toning spots as well but no corrosion, roughness, or distracting marks. EDS.



405. 1835 N-9 R4 VF25. Large 8. Great detail and an acceptable look. Sharpness XF45, the surfaces a slightly glossy deep olive and steel brown, but not overly dark. Scattered microporosity in the fields and few minor marks. MDS with the die crack at AMERICA. Quite a strong example of the variety, even if not perfectly smooth. *Ex Art Welk 4/1998 - John D. Wright - 2004 EAC Sale, lot 531 - COL Steve Ellsworth.*

406. 1835 N-9 R4 VG10. Large 8. The extremely rare terminal die state with two large euds, one on each side. Among just a small handful known, probably not more than 5 or 6 all together. Condition wise, this is a good quality cent for the grade with original, rather glossy medium brown surfaces. A few minor marks including some small rim nicks and a couple short scrapes at the ear. Planchet laminations at stars 4 to 6. Dies rotated 45 degrees CW. A rare opportunity for the middle date specialist or really anyone interested in obtaining one of the most dramatic die states in the entire large cent series. *Ex Jim Long.*



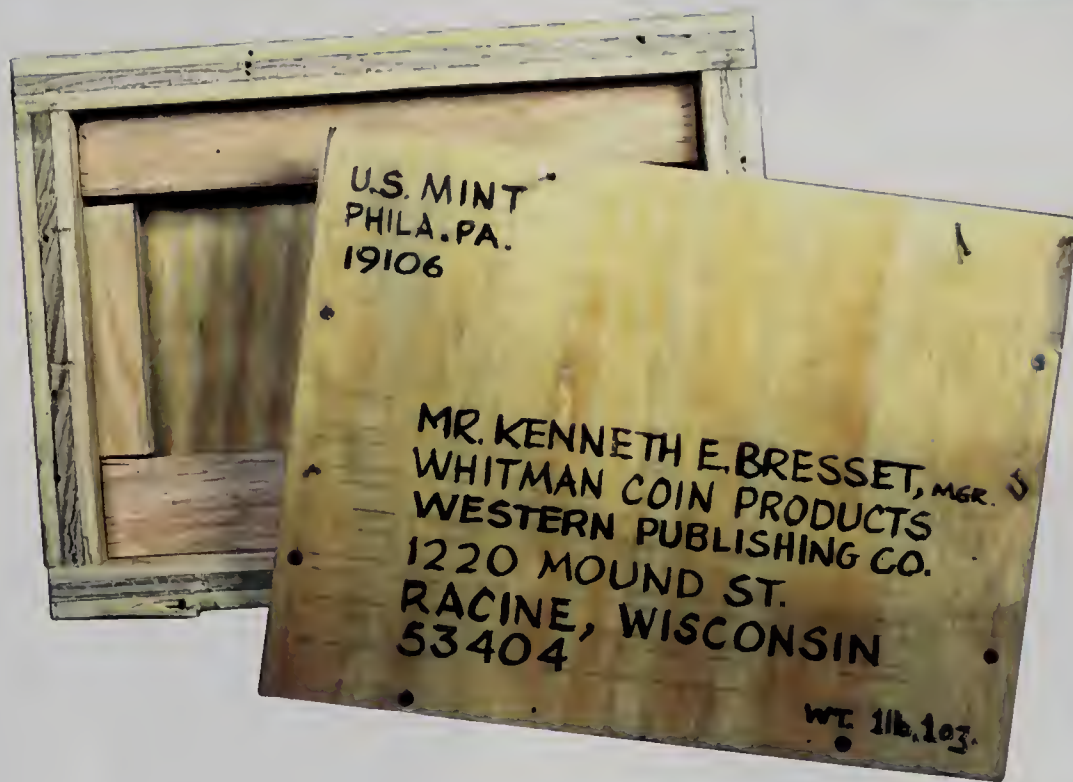
407. 1835 N-12 R4 VG10. Small 8. Glossy chocolate brown surfaces and nearly choice for the grade. There are just a few old, dull obverse scratches and some the date area was lightly rubbed E-MDS.



**408.** 1835 N-18 R4+ VG10+. Small 8. Very respectable for the variety. Strong Fine detail but lightly porous dark olive surfaces with some hazy green patina. No distracting marks and the surfaces are slightly glossy. *Ex Dayton Mall Coin Shop 1971 - Rod Burress.*

**409.** 1835 N-19 R5 F15. Head of '36. VF20 detail with just microgranular deep olive brown surfaces. No major marks and has a very satisfying appearance overall for this rarity. The only known die state with the interesting combination of a very worn out obverse and crisp, bold reverse.

**410.** Pair of rare **Middle Date varieties**. Includes 1835 N-19 R5 G4. VG detail but has a partially pitted obverse. Together with 1838 N-16 R5- G5. F12 detail but lightly porous and has a few scratches. Lot of 2 coins. *Ex Henry Hettger.*



**411. Unique Clay Impression of Experimental Roller Hub for an 1835 Large Cent.** A fascinating item, obtained directly from the Mint in 1965 by Ken Bressett. It is an impression from a steel roller transfer hub intended to produce large cent dies. The unique experimental roller hub, preserved in the Philadelphia Mint, was a steel cylindrical barrel with 4 images spaced around it. 2 obverse and 2 reverse, of a large cent dated 1835. The idea was the hub could be rolled out on to die steel impressing a negative image of the coin making 2 pairs of dies. Interestingly, the portrait style with beaded hair cords and reverse letter size of the large cent image is that of Gobrecht's design that wasn't used until 1837. There were apparently no dies made from the hub and the experiment was soon abandoned. The impression was made on very soft clay (so handle with care!) and measures approximately 2 1/4" by 4 1/2". Also included is a charming, custom made wood box (pictured above) in which the clay impression was shipped from the Mint. In addition, an offprint copy of the excellent article written by Mr. Bressett on this roller hub experiment, published in the 1991 *American Numismatic Association Anthology*, is included with the lot. An exciting and most unique item that would be a prize not only for large cent collectors, but anyone interested in the history and technology of our early Mint.



412. 1838 N-3 R1 XF40. Attractive glossy brown surfaces with tan surrounding the details. XF45 sharpness, likely naturally retoned from an old light cleaning and has done so remarkably well. Only trivial contact marks and a few tiny spots of verdigris at the C in AMERICA. LDS.



413. 1838 N-14 R4 VF35+. A high quality example of the variety. Glossy medium brown and light chocolate surfaces with just a few minute hairlines and tiny peck marks seen with a glass. Close to XF. EDS with a crisp strike and low spots at the central reverse, the coin having been struck through grease. *Ex Henry Hettger.*

415. 1839/6 N-1 R3 VF25. **Overdate.** Sharpness VF35, the surfaces a dark olive brown with some light, even underlying granularity on both sides. Still rather glossy and there are no distracting marks which makes for a presentable appearance overall. E-MDS, the die crack just starting to show in the left obverse field. *Ex COL Steve Ellsworth.*



414. 1838 N-15 R5- F15. About 10 points sharper with many microscopic nicks on both sides and reverse scratch and edge dent at 9 o'clock. A readily identifiable and decent example of this rare variety. *Ex COL Steve Ellsworth.*



416. 1839/6 N-1 R3 VG8. **Overdate.** Attractive glossy light chocolate brown and some woodgrain toning on the reverse. A bit sharper but there are some minor scratches at stars 2 and 3 and before the face. Scarce and popular LDS with the bisecting obverse die crack.



417. 1839/6 N-1 R3 G6. Overdate. Deep brown fields with chocolate devices. VG7 but there is some light roughness on each side and a few minor rim bumps. Still a decent example and the overdate feature is plain. EDS. *Ex Fred Truex.*

420. 1839 N-12 R4 VF20+. Booby Head. Choice glossy chocolate brown surfaces with excellent eye appeal. The only mark we can note is an extremely thin hairline from the nose to the rim that's visible with a glass. E-MDS with a light crack from star 4 to the bridge of the nose. A premium example of this scarce variety.



418. 1839 N-2 R2 XF45. Head of '38. Choice glossy chestnut brown surfaces with some subtle woodgraining on each side. An essentially flawless cent and nicely struck from an early state of the dies. A nice Head of '38 with an equally nice provenance. *Ex Garrett, Bowers & Ruddy 1/1979, lot 177.*

421. 1839 N-15 R6- VG10+. Booby Head. The key 1839 and this is a very decent and easily identifiable example of a variety that's often hard to attribute. Fine detail, the surfaces a fairly smooth light olive brown. There are just some minor nicks on the obverse and trace microporosity on the reverse. Handful of minor rim bumps. *Ex Rod Burress.*



419. 1839 N-9 R2 XF40. Silly Head. Frosty light chocolate brown surfaces with only minute marks and no roughness. MDS, showing rim cuds over stars 6 and 8. Traces of flowline luster on the obverse. An attractive example. In a PCGS AU50 holder mistakenly labeled "Head of 1838." *Ex John Stephens.*

422. 1840 N-1 R2 AU50+. Small Date. Very choice surfaces showing virtually no marks. Ideal light chocolate brown toning that is perfectly even and there is subtle cartwheel luster on each side. Close to AU55. M-LDS (b), the repunching on the 8 is gone and there are light flowlines at the borders. In an NGC MS62BN holder. *Ex Heritage 4/2010, lot 7155 - Allen Ross.*



423. 1840 N-7 R3 AU58+. Large Date. Attractive medium brown surfaces with much cartwheel frost on each side. Just the barest trace of rub on the highpoints but the luster and eye appeal are that of a mint state coin. Probably deserves a spot somewhere within the top 5 or 6 of the variety. LDS (c) with some of the tiny rim cuds visible underneath the date. In a PCGS MS63+BN holder. *Ex Chip Darmstadt.*



424. 1840 N-9 R3 VF35. Large Date. Slightly sharper but there are a few marks including two short scratches at star 11. Otherwise very nice chocolate and olive brown surfaces and there is a lot of luster in the fields for the grade. A great example of the latest die state (e), with a strong crack that bisects the obverse and the area below the crack is slightly raised.



425. 1841 N-2 R2 AU50. A mint state coin and very sharply struck from the earliest state of the dies. Lightly cleaned, there is some orange color amidst otherwise deep brown toning and faint hairlines in the fields on each side as well as the portrait. Otherwise mark free and there is still some reflective luster in the fields. EDS (a), the defects around the date and die lines are bold and there is no evidence of die wear near the dentils. *Ex Bowers & Merena 3/1997, lot 106 – COL Steve Ellsworth.*



426. 1841 N-7 R2 XF45. Nice frosty light chocolate brown surfaces with cartwheel luster on both sides. A solid AU50 if not for a few tiny rim ticks and a more noticeable one before STATES. EDS (a) with clear lumps under the first 1 and 4 of the date. *Ex Terry Hess 1996 – Phyllis Thompson – Goldberg's 1/31/2010, lot 494 – Allen Ross – Gary Hahn.*



427. 1842 N-2 R1 XF45+. Small Date. A sharply struck AU coin with mark free surfaces. Slightly dark olive brown toning – the kind of color that suggests having retoned from an old cleaning. Still a nice looking cent and a strong example of the Small Date *Red Book* variety which is much harder to locate in high grade than the Large Date. EDS (a). *Ex Vintage CC, Nyack NY – Henry Hettger – Goldberg's 5/25/2008, lot 3706 – Gary Hahn.*





428. 1842 N-6 R1 AU50. Large Date. Mint state sharpness or very nearly so. Flawless surfaces in terms of marks, but cleaned and recolored to a dark but decent reddish olive brown. EDS (a). Ex COL Steve Ellsworth.



431. 1844 N-1 R1 AU55. Just about mint state sharpness, there is little to no wear to be found. Likely dipped a while ago and is retoning to a deep chocolate brown. Couple hairlines in the left obverse field, otherwise mark free. The dipping was light as there is still some mint luster on each side. M-LDS (d) and the rim cuds are visible under the date. Ex "Old California Collection" - Larry Briggs - Dr. Bob Shalowitz 6/3/1989 - Gary Rittenberg, M&G 8/19/1995, lot 311 - COL Steve Ellsworth.



429. 1842 N-8 R1 AU55. Large Date. A flashy cent that would be a solid MS62 or so if not for some fine hairline scratches within the wreath. Also a mark on the cheek and a few tiny rim ticks, but the coin is mostly a highly lustrous steely brown with traces of mint red surrounding some of the detail. EDS (a). Ex Bowers & Merena 6/22/2000, lot 275 - 2002 EAC Sale, lot 570 - COL Steve Ellsworth.



432. 1844/81 N-2 R2 F15+. A nice example for the grade of this popular mispunched date variety. Glossy medium brown surfaces with just normal circulation marks and a little bit of rough texture at stars 5 and 6. The inverted date feature is plain. MDS (b).



430. 1843 N-5 R1 AU50+. Mature Head. At first glance a red UNC, but close inspection reveals the red toning is a result of a very light cleaning and there are some faint hairlines in the fields. Sharpness close to mint state though and there is quite a bit of real cartwheel luster. M-LDS (c).



433. 1845 N-5 R1 MS60. A pretty cent with frosty tan brown surfaces and full luster through the fields. Only trivial marks and a few small spots of darker tone. MDS (b) showing the die crack at stars 1 to 3. Ex Gary Rittenberg, M&G 8/19/1995, lot 327 - COL Steve Ellsworth.



434. 1845 N-15 R4 XF40. XF45 sharpness, just lightly cleaned and retoned a bluish steel brown with some pink and violet highlights. Decent eye appeal and no distracting marks, just some small, as-struck planchet flakes inside of star 4 and under the N in ONE. LDS (b). *Ex Belleair Coins – Henry Hettger – Superior 2/18/2001, lot 2495 – 2004 EAC Sale, lot 620 – Gary Halm.*



437. 1846 N-21 R5+ F15. Small Date. 5 points sharper but there are some fine scratches in the right obverse field. Otherwise glossy light olive and steel brown. E-MDS (a). *Ex Phil Moore.*



435. 1846 N-3 R2 VF25. Small Date. Glossy olive brown surfaces with many tiny nicks on the obverse but nice in general and close to VF30. Rare LDS (e) with reverse rim cud over TES and OF. *Ex Todd Wachowiak 6/20/2013 – Gary Halm.*



438. 1846 N-21 R5+ VF20. Small Date. Sharpness VF30+ but there is some graffiti and other random scratches in the fields on each side. A few minor nicks otherwise on glossy medium brown surfaces. An important coin for the very rare die state (b) with a cud on the rim above star 7, of which there are fewer than a dozen known. Noyes photo #39728. *Ex Chris Young – Walter Mustain.*



436. 1846 N-4 R1 AU58. Small Date. A mint state example that was lightly wiped long ago but retains excellent eye appeal. Sharply struck from a very early die state, the repunching on the date is exceptionally bold and the fields prooflike. Scarce so early. Olive brown and chocolate with some real mint red clinging to some of the details. No marks, just an as-struck low spot by star 5. A sharp cent with an excellent pedigree chain. *Ex Howard R. Newcomb, J.C. Morgenthau & Co. 5/16/1945, lot 743 – Floyd T. Starr, Stack's 12/4 1984, lot 1818 – Herman Halpern, Stack's 3/16/1988, lot 576 – R.E. Nafziger, Goldberg's 9/7/2009, lot 710 – Allen Ross.*



439. 1846 N-23 R5+ F12. Tall Date. Glossy medium brown surfaces with good eye appeal for the grade. Some minor marks on the reverse rim at 3 o'clock, otherwise just typical circulation marks. EDS (a). *Ex Bob Laforme.*



440. 1846 N-26 R5 VG10+. Tall Date. Another rare Tall Date variety. Original chocolate brown surfaces with some old scratches in the left obverse field. Otherwise F15 and pleasing for the grade. LDS (c) with lots of crumbling above the reverse legends. In an NGC "VF details" holder. *Ex Bob Laforme.*



443. 1847 N-12 R3 VF35+. A nice example of the die state (c) with a boldly defined rim cud at stars 9-10. Original medium brown surfaces with no distracting marks and pleasing eye appeal. *Ex Gary Halm.*



441. 1847 N-5 R3 AU58. A very nice grade for this rather tough variety. Some 60 coins top the census, but none are show-stoppers and the quality is not materially better than here. Glossy deep brown and olive surfaces with subtle luster in the fields and a tiny peep of mint red under the T in UNITED. Sharply struck EDS (a). In an old, green label PCGS MS63BN holder. *Ex John Stephens.*



444. 1847/47 N-18 R5 VF30. Large over Small 7. Frosty chocolate brown surfaces with some luster in the fields. A solid 45 coin if not for myriad tiny abrasions on each side which are recent enough to still have orange copper color within them. Still a strong example of this tough *Red Book* variety and the 7/7 feature is clear E-MDS (a). *Ex Rob Norwich.*



442. 1847 N-7 R2 VG10. Extremely rare terminal die state (f) with fully advanced rim cuds on the obverse. Slightly sharper but there are myriad tiny contact marks on each side that soften some of the detail. Two-tone brown surfaces with no corrosion, just some dirt and "wax" built up in the details. *Ex COI Steve Lllsworth*



445. 1847/47 N-18 R5 F15. Large over Small 7. Reddish chocolate brown surfaces, the obverse a tad bright from being lightly cleaned, but overall this is a nice example for the grade and close to VF. F-MDS (a) and the date repunching is plain



446. 1847 N-23 R5 VF25+. Glossy deep reddish brown surfaces. Problem free and quite nice for the grade. E-MDS (b). In an NGC AU53 holder. *Ex Jules Reiver, Heritage 1/2006, lot 28464 – John Stephens.*



449. 1848 N-1 R1 XF40. Attractive light chocolate brown surfaces with orangey tan toning in some of the protected areas. A few minute contact marks in the obverse fields, otherwise clean. Struck through grease on the die at the nose and within the reverse wreath. M-LDS (c) with the date repunching remaining in the 4 only. Comes with a Grellman card as 40. *Ex Fred Iskra 12/29/2006 – Gary Hahn.*



447. 1847 N-24 R1 VF35. XF but lightly cleaned and there is a small patch of roughness at stars 11-12. Glossy tan and light chocolate with decent eye appeal overall. EDS (a) with lots of die lines in the obverse fields. In a PCI AU58 holder. *Ex John Stephens.*



450. 1848 N-11 R5 VF30. Sharpness VF35, there are just a few light nicks on the rims and in the fields on overall glossy and pleasing light chocolate brown surfaces. Nice enough as an example of this tough variety, but has the added bonus of being from the rare late die state (e) with three rim cud on the reverse. Removed from an NGC AU53 holder and the label is included. Comes with a Grellman card as 35/30 and noting this coin as tied for CC#9 of the die state. *Ex 1995 EAC Sale, lot 437 – Bob Vail, Superior 9/7/1997, lot 731 – Superior 2/8/1998, lot 1251 – Heritage 4/2011, lot 24609 – Allen Ross.*



448. 1847 N-29 R3 AU50+. Frosty chocolate brown surfaces with small traces of mint red on each side. Very light wear on the highpoints but everything else about this cent is UNC – I guess that is (or should be) the definition of AU after all. Good luster and only trivial abrasions in the fields. E-MDS (b). Removed from an ANACS MS62BN holder and the label is included. Comes with a Grellman card as 50+. *Ex Bill Simonson – Gary Hahn.*



451. 1848 N-21 R3 AU50. Near mint state but dipped and since retoned to a light olive brown with a somewhat bright surface. Mark free and still fairly attractive. Well struck E-MDS (b) with only the tops of CE of CENT filled by crumbling. Comes with a Grellman card as 58/50. *Ex J.J. Teaparty II/1995 – Jack Wadlington – Superior 2/1999, lot 2344 – COL Steve Ellsworth.*



454. 1848 N-30 R5 VG10+. Original chocolate brown surfaces with deeper brown toning in the recesses. Just minor circulation marks commensurate with the grade and some dirt in the details, no corrosion. MDS and the rim cud over stars 7-8 appears to be there, though it is very faint. *Ex Henry Hettger.*



452. 1848 N-23 R1 AU55. A nice chocolate brown UNC with lots of frosty luster and noticeable traces of mint red. 5 point deduction for some obverse scratches and a few more within the reverse wreath. E-MDS (a). A noteworthy example of a variety with few full mint state examples known. Removed from a PCGS MS63BN holder and the label is included. Comes with a Grellman card as 60/55 and tied for CC#7. *Ex CVM – Evan Kopald – Goldberg's 9/20/2010, lot 1129 – Fred Iskra – Gary Hahn.*



455. 1848 N-32 R5+ VF20+. VF25 detail or slightly better and attractive medium brown surfaces. Just has a few too many tiny contact marks for the higher grade. The usual die state. A nice example of this rare variety. The finest is only XF followed by a handful of nice 20-25 coins, among which is this piece. *Ex David Johnson – Allen Ross.*



453. 1848 N-27 R2 F12+. An extremely rare die state on an otherwise common variety. TDS (h) with a strong rim cud outside star 12. Fewer than half a dozen reported. A pleasing coin for the grade with glossy deep olive brown surfaces and just some minor obverse nicks. *Ex Allen Ross.*



456. 1848 N-33 R5 VF25. Nice glossy chocolate brown surfaces. There are a handful of minor circulation marks but none are individually distracting. Another brief 1848 die marriage without any distinctly different die states seen. *Ex Henry Hettger – Superior 10/1/2000, lot 487 – Evan Kopald – Gary Hahn.*



457. 1848 N-36 R5 VF25. An immediately recognizable variety, even in low grade, with its heavily blunted portrait and strong clashmarks on each side. VF30 detail, cleaned and mostly recolored to a nice chocolate brown though there are remnants of artificial orange and some light hairlines. Still an attractive example and a nice grade for one of these. *Ex CVM – Evan Kopald – 2003 EAC Sale, lot 750 – Gary Hahn.*

460. 1849 N-2 R2 MS60. Lustrous chocolate brown with mint red highlighting the obverse details and about 5% original color remaining on the reverse. A fascinating variety with more than 30 distinct stages of die crumbling on the reverse. This is a middle die state, state (o) with the large chunk connecting ME of AMERICA to the wreath but no (or very little) crumbling inside the second A in AMERICA. A very attractive and solidly mint state cent with just a few obverse contact marks that keep it from grading a couple points higher.



458. 1848 N-38 R3 VF30+. Pleasing surfaces despite a few minor rim bumps. The obverse a glossy chocolate brown, the reverse more medium brown. E-MDS (a) late. *Ex Tom Reynolds 9/1/1989 – Fred Iskra – Gary Hahn.*



459. 1848 N-39 R5 VF30. And the rare 1848s keep on coming. Strong VF35 detail, the obverse lightly cleaned and there are some orange highlights on that side. A few scattered nicks and scratches, none too serious. A nice example, only a handful are known better than VF. MDS, the die lines over UNIT are weak. Comes with a Grellman card as 35-25+ and CC#6 (back in Oct. 1996). *Ex World Numismatics 10/19/1996 – Fred Iskra – Gary Hahn.*

461. 1849 N-4 R1 MS62. A lovely mint state cent with glossy and lustrous medium brown surfaces and probably 10% mint red remaining on the reverse. Very rare EDS (a) with hard, slightly reflective fields, sharp die lines, and no cracks. Only microscopic abrasions, none have any visual impact. In a PCGS MS65BN holder. *Ex New Netherlands 3/27/1973, lot 363 (where it was thought to have been a new variety based on the reverse lines and was purchased by Del Bland for Naftzger at a strong \$220.) – R.E. Naftzger; Goldberg's 9/7/2009, lot 915 – Allen Ross.*

Prooflike 1849 N-14



462. 1849 N-11 R1 XF45. Sharp AU50 detail but lightly cleaned and close inspection reveals the obverse stars had their radial lines tooled to appear sharper. Glossy light olive brown with some colorful hues on the obverse. Some tiny nicks and a couple carbon spots on the obverse, while the reverse is choice. Interesting very EDS (a) with strong die lines on each side and slightly reflective luster in the fields. Has a nice provenance. *Ex Howard R. Newcomb, J.C. Morgenthau & Co. 5/16/1945, lot 746 – Floyd T. Starr, Stack's 12/1984, lot 1873 – William A. Weimer, Kagan's 2/1987, lot 4177 – Gary Rnttenberg – CVM 4/23/2005 – Walter Mnstain.*

463. 1849 N-14 R3 MS62+. An important and beautiful example of the variety. Struck from the very earliest state of the dies and extremely rare as such. The obverse is fully prooflike, the fields reflective while the devices and die lines have a frosted texture. The reverse not quite as flashy, probably a result of the coin sitting face up in a cabinet or drawer for a number of years, but still displays fresh luster and hard fields, and there is no trace of the die crack which broke out very early. About a quarter of the surfaces overall are original mint red, the obverse more so, probably a third red on that side. The rest of the coin has toned down to a rich chocolate brown with some subtle pink and blue overtones on the obverse. The only thing precluding a higher grade are few minor obverse marks, one right of the mouth, another inside of star 11. In an NGC MS63BN holder. *Ex Chris Young.*



464. 1849 N-20 R1 XF45. A choice light brown cent with glossy surfaces and some mint frost in the fields. Exceptional eye appeal for the grade. MDS (b). *Ex 1995 EAC Sale, lot 448.*



467. 1850 N-2 R1 MS60. Lustrous chocolate and steel brown surfaces with almost 10% mint red remaining overall, more on the reverse than the obverse. A solid mint state cent with nice eye appeal though a glass reveals a couple of wavy hairlines in the left obverse field. E-MDS (b), most of the die lines remain and there is a clashmark at the chin. Removed from an old, green label PCGS MS63BN holder and the label is included. Comes with a Grellman card as 60+/60. *Ex G. Les Dawson, M&G 1/6/1996, lot 567 – Robinson S. Brown, Jr., Superior 6/2002, lot 780 – COL Steve Ellsworth.*



465. 1849 N-23 R3 AU50. Sharp AU55 detail and choice deep brown surfaces except for two scratches on the cheek. Interesting LDS (old N-13) with crumbling on most of the stars and die lapping revealing fine repunching under the date digits. In a PCGS MS61BN holder. *Ex S. Kaepfel 7/30/1994 – Walter Mustain.*



468. 1850 N-20 R5 VF20. Glossy chocolate brown surfaces. Very nice eye appeal for the grade with just some tiny nicks on the obverse. EDS (a) with the die line visible through RIC. Comes with a Grellman card as 20+/15+. *Ex Jack Borchardt 1974 – Bill Noyes – R.E. Naftzger – Walter Mustain (Walter sold REN his 30 coin via JRG on 2/4/1992, which was probably one of the finest known at the time, and received this coin as part of the deal).*



466. 1849 N-28 R3 XF45. Sharpness of AU55, the surfaces attractive but with the sort of thick gloss that's telltale of a light burnishing. Retoning a light chocolate brown with olive and pink iridescence in the fields. Only faint hairlines from the cleaning. EDS (a) with all of the die lines visible. *Ex Lester Merkin Sale 9/1974, lot 301 (as "Unlisted, Reiver 29") – Myles Z. Gerson – Del Bland – Bob Vail, Superior 9/7/1997, lot 791 – COL Steve Ellsworth.*



469. 1850 N-21 R2 MS60. Lustrous, mark-free surfaces. Colorful blue and pink toning over frosty olive brown surfaces. Likely dipped and retoned this way, but still an attractive and solidly mint state coin. LDS (c), the hoard die state, with two rim ends on the reverse. *Ex Superior 2/16/2004, lot 2526 – COL Steve Ellsworth.*





470. 1850 N-23 R2 MS60+. Highly lustrous bluish steel brown. Great eye appeal, the only marks to note are a few digs near the border at UN in UNITED. Sharply struck E-MDS (a) late. Removed from an old green label PCGS holder and the label is included. Also comes with a Grellman card as 62/60 and tied for CC#8 as of 10/2014. *Ex Allen Ross.*



473. 1851/81 N-3 R1 MS60+. Frosty medium brown surfaces that are clean and attractive. Lots of cartwheel flowline luster on each side thanks to the somewhat advanced die state. MDS (b), the repunching at the date is starting to fade but still visible. A premium example of this ever popular *Red Book* variety. In an NGC MS65BN holder. *Ex Bowers & Merena 7/8/2004, lot 104 - COL Steve Ellsworth.*



471. 1850 N-24 R5- VF25. A nice example of this condition sensitive variety of which no really high grade examples are known. Sharpness closer to VF30 but there are several tiny nicks on each side, none are individually notable though. Fairly glossy surfaces that are a mix of chocolate and deeper olive brown. *Ex Phil Moore.*



472. 1850 N-27 R4 VF30. Glossy light chocolate brown surfaces with nice eye appeal. Only light contact marks and a few spots of darker toning, but no issues of any concern for the grade. MDS. *Ex Henry Hettger - Superior 2/1999, lot 2375 - Herb Brunhofer - 2013 EAC Sale, lot 393 - Rod Burress.*



474. 1851 N-5 R2 AU50. Nice, frosty surfaces with very few marks. Dark olive toning woodgrained with lighter chocolate brown, the obverse mostly the former color, the reverse more the latter. MDS (a) late, before the crack shows up at the coronet tip. In an NGC MS61BN holder.



475. 1851 N-10 R1 AU55. Dark chocolate brown mixed with lighter orange-tan toning. The surfaces are frosty and covered with flowline luster. Nice eye appeal. No marks, just what appears to be three thin, curved strike-through's on the neck and shoulder hair curl. LDS (b). Comes with a Grellman card as 55. *Ex W.F. Johnson - Robinson S. Brown, Jr., Superior 10/1/1986, lot 1257 - Walter Dudgeon, M&G 7/30/1994, lot 389 - Bob Matthews - Vic Mrozek - Tom Reynolds 10/19/2013 - Gary Hahn.*



478. 1851 N-45 R4 XF40. 5 points sharper with some light scratches by stars 10 and 11. Frosty light brown surfaces with good eye appeal overall. MDS (a) late. A scarce variety and tough in higher grades. Comes with a Grellman card as 45/40. *Ex Walter Mustain, Harlan J. Berk Ltd. 8/27/15 - Gary Hahn.*



476. 1851 N-13 R1 AU55+. A nice medium brown cent with just a little bit of friction on the highpoints. Otherwise looks mint state with much cartwheel luster and some mint red on the reverse. MDS (b). *Ex Allen Ross.*



479. 1852 N-4 R1 AU58. Nicely retoned from a long ago dip, now a frosty light olive and steel brown with some copper-pink toning mixed in, especially on the reverse. Just a trace of friction on the highpoints and no distracting marks. M-LDS (b) with flow-lined surfaces and a crack up the left side of the reverse, but no obverse crack. In a PCGS MS64BN holder. *Ex Jerry Bobbe 8/1986 - R.E. Naftzger, Goldberg's 9/7/2009, lot 1094 - Allen Ross.*



477. 1851 N-17 R2 AU50. Has the sharpness and luster of a 55 coin but there is a small patch of scratches in the field under the inner hair bun and a few minor marks elsewhere. Still an attractive cent with frosty bluish steel surfaces and a nice example of the early state of these dies. *Ex Southern California Coins & Stamps, Pasadena CA - Doug Bird - Gary Ruttenberg, M&G 8/19/1995, lot 608 - COL Steve Ellsworth.*



480. 1852 N-6 R2 MS60. Lustrous steely medium brown with some mint red lingering in the obverse stars. Satiny, mostly mark-free fields with just a few minor nicks around the obverse border and a dull scratch over star 9. Sharply struck EDS (a).



482. 1852 N-11 R1 MS60. Another example of the variety in a slightly later die state without the mysterious “cud” on either side. Frosty chocolate brown, the surfaces clean and attractive. In an NGC MS64+BN holder.



483. 1852 N-12 R1 AU50+. Glossy deep chocolate brown surfaces with a few traces of orange color and very faint hairlines on the obverse from an old cleaning. Still attractive and otherwise nearly UNC. Sharply struck. EDS (a) late, with repunching still visible under the 1. *Ex Fred Clymer, purchased Sept. 1931 and comes with his original ticket.*

481. 1852 N-11 R1 MS63. A beautiful and fascinating cent. Highly lustrous surfaces with a pretty mix of mint red, steel blue, pink, and violet toning. The color may be a result of the coin being treated somehow, but the luster is natural and very strong and at least some of the red is original mint color. A glass reveals some darker toning spots and tiny abrasions, but nothing serious or distracting. Now to the fascinating part – this example shows the so-called “moving cud” on the reverse over TED instead of at one of the two obverse locations as described by Grellman. This curious “cud” has been the subject of much discussion lately and the general consensus is that it is not a rim cud at all, but instead the effect of some kind of issue with the collar which would enable it to show up at different places and even different sides, as here, as the collar is adjusted. Certainly very rare with the break on the back. A great study coin thanks to the high grade and bold strike in the area of the anomaly. In an NGC MS63RB holder.



484. 1852 N-22 R1 AU58. Received a mushy strike from the latest state of the dies, but there is very little if any actual wear to be found. Frosty chocolate brown surfaces with flow line luster covering both sides. LDS (d) with a cracked reverse. In an NGC MS64BN holder. *Ex Joseph Early – Garry Fitzgerald 11/13/1968 – Jules Reiver, Heritage 1 2006, lot 20533 – COL. Steve Ellsworth*



485. 1852 N-23 R5 VF20. Glossy light chocolate brown surfaces that are pleasing for the grade. Just has a few light rim bumps and normal marks from circulation in the fields. Rare LDS (b) with the single reverse rim break just before 6 o'clock. *Ex Bob Grellman – Gary Rittenberg, M&G 8/19/1995, lot 663 – Walter Mustain.*



487. 1853 N-9 R2 MS62. Frosty light olive brown surfaces with blue toning around the peripheries and mint red surrounding some of the central details, especially on the reverse. Just a few tiny nicks in the upper obverse field, none distracting. Lots of luster and superior eye appeal. LDS (e). In an NGC MS64BN holder. *Ex Allen Ross.*



486. 1853 N-3 R1 MS63. A pretty cent and among the finer examples of the variety. Highly lustrous light steel brown surfaces with about a third of the original mint color remaining overall, 15% or so on the obverse, while the reverse is close to half red. Clean fields that show only microscopic abrasions. There is a well-hidden nick in the hair above the E in LIBERTY and another on the O in ONE. E-MDS (a) late. In an NGC MS66BN holder which is a testament to the superior eye appeal.



488. 1853 N-10 R1 MS60. A nice chocolate brown UNC with totally original surfaces. Cartwheel luster on each side illumines traces of mint red clinging to some of the details. The only notable mark is a small nick on the rim under the date. MDS (b). *Ex Fred Clymer, purchased 5/9/1935 from "C.M.A." and comes with Clymer's original ticket.*



489. 1853 N-13 R1 AU55. Lustrous surfaces and technically mint state or nearly so. Light golden olive and pinkish copper color, probably retoned this way from an old dip. Only minute signs of contact and a fairly pleasing coin despite the unusual color. LDS (b). *Ex Rod Widok 5/10/1992 – Walter Mustain.*



492. 1853 N-25 R1 MS64+. Nearly full brilliant red, just starting to tone to steel brown on only some of the highpoints. Nothing but minute abrasions can be located with a glass, a tiny nick at the throat and another on the curl above star 13 are the only ones worth noting, and even they are minor. A few spots of darker tone scattered about, as usual, though none are too distracting and the obverse appears especially spot free. Highly lustrous and visually impressive, retaining probably 90% of its mint red. MDS (b). the usual hoard die state. And while that hoard contained a number of very well preserved and in many cases very red cents, a piece such as this is still noticeably better than average. In a PCGS MS64RB holder.

491. 1853 N-19 R1 XF45. AU detail but lightly cleaned and retoned a fairly pleasing light olive brown. Just some microscopic hairlines remain in the fields and there are only trivial marks otherwise. LDS (c) and the obverse is strongly misaligned to 9 o'clock.



493. 1853 N-27 R2 MS60. A glossy brown and unworn example, the surfaces essentially free of marks and possess satiny, borderline reflective luster. EDS (a). Ex Doug Bird - Gary Rutenberg, M&G 8/19/1995, lot 709 - Robinson S. Brown, Jr., Superior 2/2000, lot 2329 - Tom Reynolds - COL Steve Ellsworth

494. **Pair of Late Date Cents, 1854 & 1856.** 1854 N-12 R2 VF25+. Rare EDS (a). Together with 1856 N-12 R1 XF40. Upright 5. E-MDS (a). Both are glossy chocolate brown and quite attractive, the second with just an insignificant rim tick right of the date. Both are ex Hines-Blaisdell-Naftzger-M&G 6/14/94, lots 219 & 240 respectively, and are accompanied by their Hines and Blaisdell envelopes as well as Grellman cards and lot tickets. A neat pair that has travelled together a long time.



495. **1854 N-20 R3 MS60+.** Very attractive with satiny chocolate brown surfaces and devices that are boldly outlined by original mint red. A few trivial marks including a tiny nick in front of Liberty's mouth and a very slight rim bruise at 10 o'clock on the reverse. An interesting variety with a stray 1 punched into the dentils under and in between the 8 and 5 of the date. MDS (a) late. CC#4 as MS61 in the Noyes census and CC#6 as MS60 in the Grellman census at the time of the Naftzger sale. In a PCGS MS-65BN holder. *Ex S.M. Koepfel 1938 – R.E. Naftzger; Goldberg's 9/7/2009, lot 1215 – Allen Ross.*



496. **1854 N-23 R2 AU58.** Mint state eye appeal with just a trace of rub on the highpoints. Frosty reddish tan-brown surfaces with cartwheel luster on both sides and no marks of any consequence. MDS (b) showing the clashmark within the wreath right of ONE CENT. *Ex M&G 1/1993, lot 416 – Heritage 9/1997, lot 5384 (as MS60).*



497. **1854 N-26 R3 MS60+.** A sharply struck and attractive cent with full luster and about 10% mint red remaining, mostly on the reverse. There are a few strike-through marks on the cheek and jaw caused by debris on the die. A few scratches in the obverse fields, inside of star 10 and before the neck, are the only post-strike marks to note. A high quality example of the variety. E-MDS. In an NGC MS64BN holder. *Ex McLaughlin & Robinson, 6/18/86, lot 810 – 1990 EAC Sale, lot 459 – R.E. Naftzger – Allen Ross.*



498. **1854 N-30 R6+ VF25.** 10 points sharper but there is some orange color from being cleaned on the highpoints and in the obverse fields. Darker recesses, the obverse just microporous while the reverse has some light, scaly reddish roughness over much of that side. Still a respectable and well detailed example of this key variety. *Ex Bob LaForme.*



499. 1854 N-30 R6+ F12. Another decent example of this rarity. VF20 detail, the surfaces cleaned and recolored to a reddish brown and there is some verdigris on the reverse. Comes with a Grellman card as 20/12. *Ex Bob LaForme.*



500. 1855 N-4 R1 MS62. Upright 5's. An interestingly toned example. The obverse is a classic "greenie" with a lustrous steel blue and sea foam green surface, while the reverse is mostly original mint red fading to steel brown on the highpoints. The distinct toning is perhaps a result of the coin sitting face up, undisturbed for a long time so that only the obverse was exposed to the oxidizing elements. EDS (a), the usual hoard die state. A nice exception to the "typical" mint state 1855 N-4. In a PCGS MS63BN holder. *Ex Gary Hahn.*



501. 1855 N-6 R3 MS60+. Upright 5's. Satiny luster over mostly mark free chocolate brown surfaces. There is a faint fingerprint in the right obverse field and a few tiny nicks elsewhere, but nothing distracting and the eye appeal is excellent. MDS (a) late. In a PCGS MS63BN holder and comes with a Grellman card as 60+ and tied for CC#3 at the time of the Holmes sale. *Ex Robert Marks, Bowers & Ruddy 11/1972, lot 952 – Jack Collins, Bowers & Ruddy 10/7/1977, lot 1007 – R. E. Nafziger Jr. (via Bill Noyes) 3/10/04 – Dan Holmes, Goldberg's 9/6/2009, lot 635 – Allen Ross.*



502. 1855 N-10 R1 AU55. Slant 5's. The "12 star" die state as star 6 was clogged by grease on the die. UNC detail, but dipped and retoned to a light olive and golden tan. *Ex McLaughlin & Robinson 6/1986, lot 817 – COL Steve Ellsworth*



503. 1855 Large Cent Pattern Judd-168 VG10. An interesting worn example of this large cent related pattern which features the flying eagle motif on the obverse and a wreath design on the reverse. Uses the same Slant 5 date punches as 1855 N-9 and N-10. Mostly smooth surfaces, possibly recolored, the toning a mix of deep olive and light tan brown. In an old ANACS F12 holder.



506. 1856 N-14 R1 AU55. Slant 5. Mint state but dipped and now retoned light olive brown and golden tan. Clean surfaces with only microscopic marks and decent eye appeal despite the unnatural color. M-LDS (b) the usual high grade die state. *Ex COL Steve Ellsworth.*



504. 1856 N-10 R1 AU50+. Upright 5. A choice, tan-brown AU55 aside from a few very light obverse hairlines. MDS (b). *Ex Robinson S. Brown, Jr., Superior 9/30/1986, lot 1436 – Walter Dudgeon, M&G 7/30/1994, lot 518 – Walter Mustain.*



507. 1856 N-22 R5 VF30. Slant 5. Glossy light chocolate brown with tan toning in some of the recesses. VF35 but has a few too many tiny nicks for the higher grade. Still a very nice example of this rare variety. *Ex Norm Ashby – M&G 9/13/1997, lot 374 – Robinson S. Brown, Jr. – 2002 EAC Sale, lot 634 – Gary Hahn.*



505. 1856 N-12 R1 AU58+. Upright 5. Close to mint state and the surfaces are an attractive chocolate brown and olive-tan. Only trivial marks. E-MDS (a) late. In an NGC MS63BN holder.



Literature



510. Gilbert & Elder *The Varieties of the United States Cents of 1796*. New York, 1909. Original brown cloth binding with gilt front cover. A little worn, small split on spine, and the front free endpaper is detached. Plates in good shape. 2 supplement sheets included. 300 copies originally printed and quite scarce today.

511. Pair of EAC Sale Catalogs with Color Plates. 1985 & 1986. Lot of two catalogs which include the rarely seen photographic plates by Bill Noyes. Ex Dan Holmes.

512. Hardbound 2002 EAC Sale Catalog. Bound in green leatherette with a gilt spine. An impressive copy of a great EAC Sale.

513. Hardbound 2002 EAC Sale Catalog. Another hardbound copy of the 2002 Sale. This one with a slightly different binding and is signed by CVM and JRG.

514. Lot of 5 Hardbound M&G Sales. Includes Sale #'s 5, 7, 8, 9, & 10. All are hardbound, signed, and all but Sale #8 include additional color plates. Only 10 copies of each (12 for Sale #9) were produced. Ex Jim Long.

END OF SALE

508. 1857 N-1 R1 MS62. Large Date. A lovely 1857 large cent. Lustrous medium brown surfaces with quite a bit of mint red surrounding the details as well as some subtle and attractive blue and violet overtones. Sharply struck from an early die state, the reverse die lines are clear. A thin scratch in the field before the nose is the only mark to note. In an NGC MS64BN holder.



509. 1857 N-4 R1 XF40. Small Date. Light olive brown surfaces that are pleasing and problem free aside from a few small nicks. Ex Fred Clymer, purchased April 1930 from "J.B.B." and comes with Clymer's original ticket.

## TERMS OF SALE

1. This is a private sale. Participation is by invitation only and is limited to members of The Early American Coppers Club or invited guests. The auctioneer reserves the right to refuse to honor any bid which, at his sole discretion, he feels is not submitted in good faith. The auctioneer may withdraw any lot, without prior notice, for any reason whatsoever.
2. The highest bidder acknowledged by the auctioneer shall be the buyer. In case of dispute the auctioneer may at his sole discretion reopen a lot. In all cases the auctioneer's decision shall be final and binding on bidders.
3. All sales are payable in U.S. funds immediately upon receipt of invoice unless other arrangements have been made prior to the sale. Lots delivered in state of sale are subject to all applicable state and local taxes unless appropriate permits are on file with us.
4. Postage will be added to the invoice of all successful mail bidders.
5. A 15% buyers fee will be added to all invoices.
6. Please keep in mind this is not an approval sale. All sales are considered final. Sales to the floor may not be returned for any reason save authenticity. Sales to mail bidders are final unless lot proves to have been mis-described.
7. Lots will be available for viewing by appointment.
8. Mail bids or phone bids will be accepted up through the day of the sale. All bids will be reduced. Lots will open at one increment above second highest mail bidder. Bidding will proceed as competition dictates with the lot either selling to the floor or to the mail bidder at one increment above the second highest bid.
9. Consignor may bid or place a reserve bid on their own coins. Any coins repurchased by a consignor will be announced as a pass. Principals of the auction firm may consign or may bid on coins in the sale.

### MAIL BIDS

Please mail all bids to:

Kevin Vinton  
PO Box 771  
Danbury, CT 06813-0771  
email: kevin@indeetlib.com  
telephone: (203) 305-4710













Copyright 2016  
inde.et.lib  
PO Box 771  
Danbury, CT 06813