



The 2018 EAC Convention Sale

Traverse City, Michigan

May 5, 2018

Kevin Vinton

presents

the

2018 EAC Sale

May 5, 2018, 7:30 p.m. at the
Grand Traverse Resort and Spa
100 Grand Traverse Village Blvd.
Acme, MI 49610-0404

231-534-6150

Welcome to the 2018 EAC Convention Sale.

The sale will be held Saturday night, May 5 at 7:30 p.m., at the Grand Traverse Resort and Spa, 100 Grand Traverse Village Blvd., Acme, MI
Lot viewing will be held at the Early American Coppers Club Convention May 3-5 on the bourse floor.

Mail bids should be directed to Kevin's address: P.O. Box 771, Danbury, CT 06813-0771.
E-mail bids can be directed to kevin@indeetlib.com up through the day of the sale.

Feel free to call Kevin (203-305-4710) to discuss any coin in the sale.

This is a private sale, you must be a member of EAC to bid-please read our terms of sale before bidding.

Back Cover: "ROUND AND ROUND THE ROLLER MILL, THE HORSES ROLL AND ROLL OUT THE COPPER STRIP, FOR THE FIRST WREATH CENTS, IN 1793" © 2018 SHEA MOWAT - Pen & Ink & Acrylic Over A Poor Quality Print Of An Engraving By ROBERT BENARD Based On An Illustration By RAYMOND LUCOTTE Which Was Originally Published In *Encyclopédie, ou dictionnaire raisonné des sciences, des arts et des métiers* (Encyclopedia, or a Systematic Dictionary of the Sciences, Arts, and Crafts)

COLONIALS



1. 1760 Voce Populi Halfpenny Nelson 9 R2 XF40. 109.1 grains. The so-called "Stern Head" variety and this is an excellent example. Received a better than average strike from an early state of the dies and shows strong central detail and crisp legends. Appealing medium brown surfaces, the only minor flaws are a few hairlines in the obverse fields and a little nick on the chin.



2. 1781 Libertas Americana Medal Electrotpe Copy AU55. A beautiful old electrotpe copy of probably the most famous and beloved American medal. Most likely made in the mid to late 1800s and is exceptionally well crafted - the detail is sharp and the fields, rims, and edge are perfectly smooth. Glossy dark brown surfaces with no marks of any consequence, just a bit of "cabinet friction" on the highpoints where a bit of lead shows through. For those who don't want to spend 5 figures on an original, this is a good opportunity to get a considerably impressive example for much less.



3. 1787 Massachusetts Cent Ryder 2b-A R3 VG7. **Horned Eagle.** A decent lower grade example with smooth tan and light olive brown surfaces. Just a few little scratches in the left obverse field. The date, legends, and "horned eagle" die break are all visible if a bit weak in places.



5. 1787 New Jersey Copper Maris 46-e R1 VG8. A neat looking faux-broccage showing incuse detail from a Coronet Head large cent on both sides. Nice color and surfaces aside from the damage sustained during the coins being hammered together. The New Jersey is notable also for its early die state, showing no die swelling at the date. *Ex 1996 C4 Sale, lot 388.*



4. 1787 New Jersey Copper Maris 32-T R2 VF25. Very attractive tan and reddish chocolate brown surfaces that are devoid of notable contact marks. Just a light dusting of carbon at the right borders and in some of the reverse detail. Well centered, the obverse a little tight toward 6 o'clock while the reverse is just about perfect. Removed from a PCGS VF35 holder and the label is included. *Ex 2017 EAC Sale, lot 5 – Al Boka.*

Inexpensive "FUCIO" Rarity



6. 1787 Fugio Copper Newman 2-C R6 FR2. **Club Rays, FUCIO.** A very rare type, one of the keys to a set of Fugio coppers by *Red Book* variety. This example clearly spent much of its life underground but must have been quite sharp when it was lost as a good amount of detail remains despite the extensive corrosion. The attribution is obvious thanks to the distinctive convex ends to the sun rays, the central reverse detail (this variety is the only use of reverse C), and there is even a faint trace of the important C in FUCIO.



7. 1783 Washington Draped Bust Token Baker 3 R5 PF63. Proof Restrike, Engrailed Edge. A lovely example of these impressive Washington pieces, struck by William Joseph Taylor in England around 1850 using dies he obtained from the Soho Mint which struck the "originals" around 1820. This is a well-preserved piece with pristine, reflective surfaces and rich brown color. Some colorful iridescence shows when angled under a light.

8. 1783 Washington Draped Bust Token Baker 3C R6 PF63. Proof Restrike, Plain Edge. The scarcer plain edge version. Another exceptionally nice piece and would make great companion for the preceding lot. Carefully preserved, original surfaces with no marks or spots of any consequence. Attractive reddish brown patina and the surfaces come alive with blue and gold iridescence when viewed at the right angle.



9. 1795 Washington Grate Halfpenny Baker 29B R1 AU55. Large Buttons, Reeded Edge. Quite choice for one of these with nice chocolate brown color and near perfect centering so that the entirety of the legends is on the planchet, which is not always the case. No real detractors, just a few tiny carbon spots on the obverse and trivial, microscopic marks on the reverse. Substantial prooflike luster remaining in the fields and just a trace of friction on the highpoints.



12. 1753 Great Britain Halfpenny George II S-3719 VF25. Problem-free medium brown surfaces. A nice mid-grade example of the type. Halfpennies such as this would have been commonplace in early American circulation and this specific George II type is clearly what clearly was being imitated by many of the Connecticut copper designs.



10. (c. 1795) Washington Liberty & Security Penny Baker 30 R2 VF25. Plain Rims. Glossy medium brown surfaces. Sharpness higher in the VF range but there are some digs just past GEORGE. Nice for the grade otherwise. The interesting edge lettering is bold and reads: AN ASYLUM FOR THE OPPRESS'D OF ALL NATIONS.



13. 1736 Contemporary Counterfeit Great Britain Farthing George III obverse (!) F12. 2.4 grams. The first in an interesting run of contemporary counterfeit British coppers in this sale, coins that were among the most common circulating money in colonial and early federal America. This is a rare variety and highly unusual muling of dies featuring George III on the obverse who didn't become king until 24 years after the date on the reverse die. Only a handful of this die pair are known, all from a similar late state of each die.



11. (c. 1792) Kentucky Token Breen 1155 R1 XF45. Plain Edge. An attractive and fully detailed example of this American themed Conder token, Breen's so-called "Starry Pyramid Halfpenny." Glossy brown surfaces, the obverse a few shades darker than the reverse. No problems to note.



14. 1772 Contemporary Counterfeit Great Britain Halfpenny George III XF40. 8.9 grams. "Aging George" family. A nice higher grade piece. Surfaces a tad shiny from a light cleaning, but still attractive. Some die rust showing on the obverse.



17. 1775 Contemporary Counterfeit Great Britain Halfpenny George III VF35. 7.2 grams. "Young Head" family. Open Gs. Choice light brown surfaces. Well-used reverse die with weak peripheral detail on that side.



15. 1774 Contemporary Counterfeit Great Britain Halfpenny George III AU50. 7.2 grams. "Georgius Triumpho" family. Glossy deep brown surfaces with no marks or corrosion. Exceptionally nice condition for a contemporary counterfeit halfpenny. An interesting die state piece, both obverse and reverse showing severe clashing, flowlines, and die rust.



18. 1794 Contemporary Counterfeit Great Britain Halfpenny George III F12. 6.2 grams. A famous and rare date, 1794 is the latest date seen on a contemporary counterfeit George III and no regal halfpennies were made anywhere near this date. It's a possibility that 1794 represented the actual year of production of this variety. This is a pleasing example with steel brown surfaces that are quite nice for the grade. Another example of this variety, in slightly better grade, appeared as lot 5975 in Mike Ringo Collection sale (Stack's 1/2008) and realized \$747.50. *Ex Gary Smith.*



16. 1775 Contemporary Counterfeit Great Britain Halfpenny George III XF45+. 8.8 grams. "Long Neck" family. An incredibly nice example of the distinctive Long Neck style halfpenny. Sharply struck, only lightly worn, and perfectly centered. How often do you see a complete border of dentils around both sides on a contemporary counterfeit halfpenny? Totally problem-free, original brown surfaces.



19. 1775 Contemporary Counterfeit Ireland Halfpenny George III VG10. 7.5 grams. A rare and noteworthy variety due to the date not matching the style of the obverse bust of George III, which was only used on 1766-1769 halfpennies. Fine sharpness but there are myriad tiny nicks and rim bumps. Nice two-tone color though. *Ex Dennis Fuoss.* Donated lot, all proceeds to EAC.



20. 1776 Contemporary Counterfeit Ireland Halfpenny George III VF25. 7.2 grams. "Georgius Triumpho" family. Choice, original medium brown surfaces. A really nice example of this Irish counterfeit family and features everybody's favorite date as well. *Ex Gary Smith.*

21. Lot of 8 Contemporary Counterfeit British Coppers. Includes a 1773 farthing, a 1773 halfpenny, (2) 1774 halfpennies, a 1774 Machin's Mills halfpenny Vlack 5-74A, (2) 1775 halfpennies, and a George III halfpenny without a date. Some interesting and nice grade pieces included here. Inspection recommended.

22. Trio of 1833 Liberia One Cent Tokens. Includes 3 different die varieties of this interesting token, struck in Belleville, NJ for the American Colonization Society. Present are: CH-1 VF20, a nice medium brown piece; CH-3 F15, LDS with an obverse cud, sharpness XF40 but lightly porous and cleaned; CH-5 F15, VF detail but cleaned.

HALF CENTS

23. Set of 3 Gallery Mint 1793 Half Cent errors. A fascinating little set which includes one picce with two obverse brockage impressions on the reverse as well as the two double struck brockage makers that created it. All 3 are lustrous and just about fully red. Comes with the original Gallery Mint tag stating these were struck on 4/7/1997 by Adam Hardcastle and the tag is signed by him.



24. 1794 C-2a R2+ F12. Small Edge Letters. Quite sharp, with detail in the VF30 range. There are some signs of tooling on the portrait where there was likely some verdigris removed in and around the pit on Liberty's cheek. The reverse surface is slightly wavy in appearance, probably due to the work done on the obverse. Surfaces just lightly granular otherwise and there are no major marks. Bold edge lettering. Offers a lot of detail and is a respectable coin in light of that. E-MDS, Manley 2.0. 97.1 grains. *Ex Bill Tivol.*



25. 1794 C-3a R5 VG7. Small Edge Letters. A decent and just about fully detailed example of this tough Cohen number. Strong Fine sharpness. Lightly granular, but no marks or damage. Dark brown with lighter highpoints. Complete edge lettering. EDS, Manley 1.0. 91.7 grains. *Ex 1983 EAC Sale, lot 53 – Carvin Goodridge, Goldberg's 9/2012, lot 17.*



26. 1794 C-5a R4+ VG7. Small Edge Letters. Quite pleasing for the grade, glossy two-tone surfaces with just a trace of very minor underlying roughness in a few places. The date and legends are fully visible, just the fraction is weak. Small planchet flaw on the edge under the date. Strong edge lettering. EDS, Manley 1.0 and the dies are rotated 75° CW. 92.3 grains.



27. 1794 C-6a R5- AG3. Small Edge Letters. G detail and almost all the date, legends, and devices are at least outlined. Steel brown surfaces that are lightly rough and there is an old scratch obverse the date. The small edge letters are a bit worn but fully visible. Decent for the grade and variety, one that seldom comes nice. 99.4 grains.



28. 1794 C-8 R5- G6. Fine detail overall with an especially bold obverse. Upper right reverse is weak but most of the detail can be made out. Light olive-steel surfaces that are finely porous and there is a circular dig left of the fraction. Complete edge lettering. EDS, Manley 1.0. 93.9 grains.



30. 1795 C-1 R2 G6. Lettered Edge. Tan devices and darker brown fields creating a bold cameo effect and a very attractive appearance. Strong, well-balanced detail for the grade. The only minor flaws are a couple thin, old scratches on the obverse and some extremely light roughness in the fields. Neither of these issues is very obtrusive at all. Struck on an underweight planchet that is noticeably thinner than the usual lettered half cent. Weighs 92.7 grains, approximately 10% under standard. LDS, Manley 2.0. *Ex Don Valenziano 6/19/1991 – Davy Collection, Goldberg's 9/2010, lot 20.*



29. 1794 C-9 R2 F12. Choice tan brown color and a very nice early half cent despite some minor marks – a couple scratches on the rims and a few very faint old scratches across the reverse. The detail on both sides is strong and even. Bold edge lettering. LDS, Manley 3.0. 106.2 grains.

Choice 1795 Cohen 3



32. 1795 C-5a R3 F12. Plain Edge. A neat clipped planchet specimen with VF20 sharpness, or very nearly so. Light golden brown with some olive and brick red toning, the surfaces are bright and have an artificially thick gloss due to having been polished. Displays two different planchet anomalies – a curved clip and some natural flaws and tapering left of the date. Dies rotated about 25° CCW. 87.9 grains.



33. 1795 C-6a R2 VG10. Plain Edge. Another interesting planchet, this one showing undertype from a Talbot, Allum, & Lee token at the left obverse border as well as a planchet crack past LIBERTY which probably happened during the rolling out process of the TAL stock. Pleasing chocolate brown surfaces with no notable problems. EDS, Manley 1.0. 80.3 grains.

31. 1795 C-3 R5+ VG7. Plain Edge. Beautiful tan brown surfaces and this coin somehow managed to escape all but the most trivial marks during its career in circulation. Seldom is any early half cent seen so choice, much less for a rare and condition sensitive variety such as this. Worthy of a premium bid. LDS, Manley 2.0, with a weak central reverse. 81.6 grains.

"LIBERTYORK" 1797 C-1



35. 1797 C-1 R2 G4. Triple Struck. 1 Above 1. Quite an interesting error piece showing evidence of having been struck at least three times. These multiple strikes show clearest on the reverse where there are two AMEs visible on the right border, rotated about 40 degrees from each other. And then an additional A from AMERICA shows above the right side of the wreath which was from a strike off center by approximately 15% to 8 o'clock. A point sharper than our assigned grade, the surfaces just a little rough and cleaned, and there are some scratches at the date. Not too bad for the grade though. M-LDS, Manley 4.0. 92.7 grains. *Ex Tom Reynolds 7/22/1988 – Davy Collection, Goldberg's 9/2010, lot 67.*



34. 1797 C-1 R2 VF25. 1 Above 1. A visually striking piece with bold undertype from a Talbot, Allum, & Lee token that's positioned just right so that the Y from the half cent's LIBERTY and the Y from the token's NEW YORK overlap perfectly. The size and style of YORK is similar to the half cent's type as well making it appear as a single continuous legend reading "LIBERTYORK." A nice grade coin with close to XF detail. Some fine scratches across the obverse and a patch of lightly rough brick red patina on the left side of the reverse are the reasons for the net grade, but the color is a pleasing medium steel brown and the arms length eye appeal pretty solid. M-LDS, Manley 4.0. 94.0 grains. *Ex Bill Tivol.*



36. 1797 C-2 R3 VF25. Plain Edge. A lovely example of what is, in this cataloger's opinion, the most aesthetically pleasing obverse die of the Liberty Cap half cents, with its well centered devices and bold, thick border. Glossy olive brown surfaces, the toning light, even, and quite attractive. Slightly sharper than our grade and appears choice at first glance, though close inspection of the obverse reveals some minor hairlines on that side and to a lesser extent on the reverse. No problems otherwise, hardly any marks, and the eye appeal is quite nice. Faint traces of Talbot, Allum, & Lee undertype at 9 and 2 o'clock on the obverse. Noyes photo #73609. 90.2 grains. Ex Chuck Fmrjanic – Dr. Richard F. Elto – Jim McGuigan 6/16/1984 – Jules Reiver 2/22/1999 – Bob Yuell "The Whister Collection," Goldberg's 9/2011, lot 29.

37. 1797 C-3a R3 F15. Low Head, Plain Edge. Very well detailed for this variety with sharpness high in the VF range. Microporous brassy golden-brown surfaces that show no distracting marks and have pretty nice arms-length eye appeal. Struck slightly off center on a cut-down, off center large cent with the ST of STATES from that large cent showing inside the reverse wreath. MDS, Manley 2.0. 98.1 grains, a rather hefty weight for one of these. Comes with an excellent provenance. Ex Hugh Campbell – Jack Beymer – Roger S. Cohen, Jr., Superior 2/2/92, lot 86 – R. Tettenhorst Goldbergs Davy 1 9/19/2010, lot 87 – CVM – Bill Eckberg.



38. 1797 C-3b R4 FR2. Low Head, Lettered Edge. A point or two sharper with some scattered pitting and light scratches on each side. Nice chocolate brown color though. The date is clear and the portrait mostly outlined. Only portions of the legends are visible. The edge lettering is clear all the way around, but as usual is too tall for the thickness of the planchet and the tops and bottoms of some of the letters don't quite fit. 74.6 grains.



39. 1800 C-1 R2 F12. Double Struck, Off Center Reverse Brockage. A great half cent error with smooth surfaces and very clear detail from the first strike which was an off center reverse brockage. The incuse detail from the brockage side of the first strike shows on the obverse of the normal, second strike. Close to VF detail, surfaces appear to have been lightly smoothed and recolored, but are still fairly attractive. *Ex Bill Weber – Davy Collection, Goldberg's 9/2010, lot 105.*



40. 1800 C-1 R2 VF20. Double Struck, Reverse Brockage Maker. Glossy chocolate brown surfaces with only minor contact marks. An interesting looking piece that was struck twice, the first strike normal, but the second strike against another planchet on the reverse, creating an off center brockage on that other coin. Rather unusual strike characteristics on the obverse, showing slightly rotated doubling from the second strike on the detail opposite the reverse impression – on the date and lower bust – but none at LIBERTY and the upper hair detail. *Ex Heritage 7/28/2004 – Ed Fuhrman – Davy Collection, Goldberg's 9/2010, lot 106.*



41. 1802/0 C-2 Electrotpe Copy XF40. A nicely made, old electrotpe copy of one of the finest 1802 half cents, the Brobston-Missouri Cabinet specimen. The two short scratches between ME in AMERICA are the surest tells as to the coin this was made from. A bit of the copper plating is worn from the highpoints showing the lead underneath, but there is no other damage to the surfaces.



42. 1803 C-3 R2 VG7. Double Struck. About as dramatic a double strike as can be imagined for a piece where the second strike was this far off center. This thanks to the date being the detail that made it on to the planchet from the second strike. The letters H and A were scratched into the left obverse field, but the surfaces are a nice glossy chocolate brown otherwise. LDS, Manley 5.0 and the dies are rotated 45° CW. *Ex Metropolitan Show NYC 3/3/1978 – Carvin Goodridge, Goldberg's 9/2012, lot 117.*

Flipover Double Strike 1803 C-3



43. 1803 C-3 R2 G5. Flipover Double Strike. An excellent example of this rare type of mint error. Bold wreath, ribbon, and fraction detail from the first strike show on the obverse as well a partial outline of the portrait at the central reverse. VG detail but lightly granular and partially cleaned. EDS, Manley 1.0.



44. 1804 C-1 R3 VF20. Crosslet 4, Stems. Sharp detail, XF or nearly so in that regard. There are myriad tiny marks on the obverse, but no corrosion or verdigris. Tan and light olive in color. Serves as a good example of the die state, EDS, Manley 1.0.

Key 1804 Cohen 2



45. 1804 C-2 R6- FR2. Crosslet 4, Stems. An esteemed rarity and one of the key acquisitions along ones way to a set of half cents by die variety. Not discovered until the 1960s and almost always seen in low grade, the best known grading just Fine. The present FR2 specimen is certainly respectable and pretty decent for the grade despite some old obverse scratches and tooling at LI of LIBERTY and right of the reverse fraction. Just well worn otherwise and the color is a pleasing two-tone light and medium brown. The diagnostic die crack above ERTY and reverse attribution points are very plain. MDS, Manley 2.0. In an NGC AG details holder.



46. 1804 C-4 R5 VG7. Crosslet 4, Stems. A nicely detailed example of this tough variety which features the earlier use of the "low 4" obverse shared with C-2. Solid F15 detail, light roughness on both sides but no major marks. Olive and steel brown in color. EDS, Manley 1.0. Ex Ray Senchuck 3/2/1974 - Carvin Goodridge, Goldberg's 9/2012, lot 130.



47. 1804 C-4 R5 G4. Crosslet 4, Stems. Sharpness VG10 and all of the major detail is clear. Lightly rough olive brown surfaces with steel devices. Dig in the right obverse field and a small one nearly opposite it on the reverse. Slight bend to the planchet. Respectable given the die variety – there aren't a ton of these to go around.



48. 1804 C-6 R2 VF35. Spiked Chin. Glossy medium brown surfaces with nice eye appeal and sharp detail, not far from XF. A few tiny planchet flakes at the E in STATES are the only marks to note, and they are as-struck. EDS, Manley 1.0.



49. 1804 C-6 R2 VF30+. Spiked Chin. Very nice quality surfaces with really no marks or flaws worth noting. Glossy olive brown and steel with a bit of mottled tan toning on the obverse. M-LDS, Manley 9.0.



52. 1804 C-6 R2 XF40. Spiked Chin. Same die state as the preceding lot, Manley 11.0. This piece has frosty tan and medium brown surfaces and sharp AU detail. A few patches of slightly rough patina before the face and at the reverse border require the deduction. Still a nice piece. *Ex Heritage 2/1995, lot 5013 – Bill Tivol.*



50. 1804 C-6 R2 VF35. Spiked Chin. A slightly later die state than the preceding lot with the retained cud under the fraction somewhat more raised. Still a Manley 9.0 die state though as there are no signs of the metal rising any further outside the I in UNITED. A sharp medium brown coin with detail on the better side of XF40, there are just a few tiny marks on the obverse and a thin scratch across the portrait.



53. 1804 C-8 R1 VF35. Spiked Chin. Choice, original chocolate brown and tan surfaces. No marks or flaws. A lovely mid-grade Spiked Chin. MDS, Manley 3.0



51. 1804 C-6 R2 XF40. Spiked Chin. Attractive glossy tan brown and light olive surfaces with only trivial marks. A later die state still with a fully broken out cud over AMERICA, Manley 11.0. Removed from an old PCGS AU50 holder and the label is included.



54. 1804 C-11 R3 VF20. Plain 4, Stems. A fairly scarce major, *Red Book* listed variety represented by this one die variety. This is a smooth VF25+ example with a slight deduction for a light scratch on the portrait with orange underneath. Recolored and rather dark, but has decent eye appeal thanks to the lack of marks.



55. 1804 C-13 R1 XF40. Plain 4, No Stems. Glossy medium brown with some lighter chocolate on the reverse. No marks of any consequence and just a few specks of probably removable verdigris on the reverse. Faint traces of mint frost in a few places at the peripheries. An attractive piece. MDS, Manley 2.0. In an NGC AU58BN holder. **A donated lot from the Liberty Cap Foundation, all proceeds to EAC.**



57. 1805 C-1 R2 VF20. Small 5, No Stems. A pleasing chocolate brown half cent with mottled tan toning on both sides. Magnification reveals myriad tiny marks which preclude a slightly higher grade otherwise, but this is still a nice looking piece. M-LDS, Manley 2.0.



56. 1804 C-13 R1 VF25. Double Struck. Plain 4, No Stems. A fascinating and impressive looking mint error with a lot going on to study. This coin was struck normally first and then received an approximately 30% off center strike which left an arc impression of dentils on each side as well as portrait detail at the upper left obverse. During this second strike, another planchet also came into the press and left an impression about 90% off center on the reverse which caused the coin to bend a bit leaving a slightly convex obverse and concave reverse. Glossy light olive brown and steel surfaces with no notable post-strike damage. LDS, Manley 3.0. *Ex Joe Cassano Auctions, New Haven CT 3/21/1986 – Carvin Goodridge, Goldberg's 9/2012, lot 175.*



58. 1805 C-3 R4 G4. Small 5, Stems. The rare *Red Book* variety of the date. A couple points sharper but the fields are a bit rough and the devices lightly cleaned. The only marks are a few scratches in the left obverse field. Full date and legends.



59. 1807 C-1 R1 VG10. The rare early die state with crisp obverse detail and full dentilation around most of the borders. Slightly dark brown with chocolate devices. F+ detail but a bit rough in places and there a few scrapes at HALF CENT.

Flipover Double Strike & EDS 1807 C-1



61. 1808/7 C-2 R3 VG8. Glossy medium brown surfaces and a choice piece if not for some rim damage on the right side of the coin. Fine detail. E-MDS, Manley 2.0.



60. 1807 C-1 R1 VF30. A great half cent, both a high grade example of the rare early die state as well as an interesting mint error. Subtle evidence shows on the reverse that this was a flipover double strike (or possibly struck over a spoiled blank and it didn't all happen at once). Traces of the portrait's outline can be seen at the top and bottom of the reverse wreath. Glossy, problem-free surfaces nicely recolored to an attractive deep brown.

Significant 1809 Cohen 1



63. 1809 C-1 R4 AG3. A well worn, but smooth and uncorroded example that has G4 detail and nice contrasting toning between the fields and devices. Net graded for a bit of damage to the upper obverse which caused a slight bend and some uneven wear to the reverse.



64. 1809 C-2 R3 F12. Nice chocolate brown color, the surfaces that are a bit rough in texture under a glass due to many microscopic marks, but there is no corrosion. A decent example of this better variety, one that becomes quite scarce in VF and higher. M-LDS, Manley 2.0.

62. 1809 C-1 R4 VG10. Quite nice for this variety and probably among the top dozen or so known. Fine detail and has a fairly pleasing appearance for the grade despite a bit of roughness in the fields and a few light scratches on the obverse. Attractive two-tone color, the devices a few shades lighter than the fields. MDS, Manley 2.0 and the dies are rotated 20° CCW. *Ex Doug Bird – Bill Eckberg, Goldbergs 9/19/2010, lot 707 – 2013 EAC Sale, lot 52 – Doug Bird 6/6/2014 – Bob Fagaly.*



66. 1809 C-3 R1 VF30. Glossy medium brown and light steel. No distracting marks and quite nice for the grade. E-MDS, Manley 1.0 and the dies are rotated 25° CCW.



65. 1809 C-3 R1 AU50. A sharp and attractive half cent, the surfaces virtually free of marks. The only very minor flaw one could note is a small spot of roughness right of UNITED. Medium brown with some orangey-tan in the protected areas, most likely recolored but nicely so and the appearance achieved is pleasing. E-MDS, rather late in the Manley 1.0 range, the dies rotated 25° CCW. Removed from an NGC MS63BN holder and the label is included.

“Intoxicating” Double Struck 1809 C-3



68. 1809 C-3 R1 F12. **Double Struck.** A unique looking half cent that was struck twice with a slight rotation in between strikes which caused a doubling and distorting of much of the detail. Mostly smooth olive brown surfaces, just a few thin scratches on the reverse. A highly unusual piece whose obverse was aptly described by Bob Grellman in the Carvin Goodridge catalog as having an “intoxicating appearance.” *Ex Cornell University collection, Stack’s 5/30/1975, lot 528 – Carvin Goodridge, Goldberg’s 9/2012, lot 252.*



67. 1809 C-3 R1 XF40. A lovely coin with a distinctive appearance due to its flat, wide rims. A few other 1809 half cents are known like this and they are typically called “broadstruck,” meaning struck outside the collar. Of course, the mint wasn’t using collars at all at this point. Another possible explanation is that this piece was struck on a type 1 planchet, i.e. before the rims were upset. This could impart the same sort of flat rims as well as a slightly wider diameter. An interesting coin and attractive too, with choice steely-brown surfaces and sharp detail. LDS, Manley 2.0. *Ex CVM circa 1986 – Ray Rouse, Goldberg’s 9/2008, lot 86.*



69. 1809 C-4 R2 VF35. Circle in 0. An interesting variety and fairly tough to find for an R.2. There hasn’t been an example in the EAC Sale for a few years. This is a very nice one for the grade with choice, glossy chocolate brown surfaces. Just a few trivial contact marks, none worth pointing out. E-MDS, Manley 1.0. Dies rotated 20° CW.

Dramatic 1809/6 Double Strike

70. 1809/6 C-5 R1 VF25. Double Struck. An impressive mint error. Shows bold detail from a second, 40% off center strike on both sides. It appears the off center strike came first and the second was normal. Glossy reddish chocolate and steel brown surfaces, no condition issues to note. LDS, Manley 3.0. A visually striking piece, especially so on the reverse. Removed from an NGC VF30 holder and the label is included. *Ex American Numismatic Rarities 7/23/2005, lot 609 – Ed Furrman 4/19/2006 – Davy Collection, Goldberg's 9/2010, lot 278.*



71. 1809 C-6 R1 XF40. A sharp piece, XF45+ detail but has rather unnatural orange-brown color, having only partially retoned from a light cleaning. No contact marks or other flaws of note. M-LDS, Manley 5.0 and the dies are significantly rotated, 150° CCW. In an old ANACS AU55 holder.



72. 1809 C-6 R1 VF35. Nice, deep olive brown surfaces with traces of mint frost through the stars and legends. Good eye appeal and no major problems, just a few tiny contact marks and a couple small patches of slightly rough orange patina. MDS, Manley 3.0 showing both of the obverse rim breaks. Dies rotated 30° CW.



73. 1811 C-1 R4 G4. A decent “wide date” 1811 with a pleasing appearance for the grade. A point sharper than our assigned grade due to the fields being a bit granular. Nice color though and only minor marks that are in line with the grade. EDS, Manley 1.0.



75. 1811 C-2 R3 G6. VG8 detail with a little bit of obverse roughness and a larger pit at the bust tip. The reverse is smoother and basically problem-free. Bold date, the legends complete but a little weak at STATES. EDS, Manley 1.0 and each die is slightly misaligned in different directions.



76. "S.C. BROWN" Counterstamp on 1811 C-2 Half Cent. A neat item with the unknown merchant name "S.C. Brown" boldly counterstamped onto each side of this key date half cent. The host coin grades VG10 or so, Fine sharpness but with a few marks. No corrosion though and nice medium brown color.

74. 1811 C-2 R3 F15. Pleasing quality for this challenging date. VF detail but there are a few marks on the obverse – a couple nicks above the head and some damage, perhaps intentional, that took out the I in LIBERTY. Nice surfaces overall though, glossy and medium olive brown in color. LDS, Manley 3.0. *Ex 2014 EAC Sale, lot 52.*



77. 1825 C-2 R3 XF40. A pretty half cent with a tan obverse and light olive reverse. Both sides are glossy with traces of mint frost at the peripheries. Problem-free with just a few trivial marks. MDS, Manley 2.0.

Very Early Die State 1826 C-1



78. 1826 C-1 R1 AU50. A rare example of the earliest state of these dies. Prooflike surfaces that are quite reflective and glisten under a light. A high grade piece, there is just a trace of rub on the highpoints and a little scruffiness in the fields, but not enough to hamper the luster. Tiny remnants of mint red in some of the details, the toning predominantly light steel. A special piece.



79. 1826 C-1 R1 AU50. From the earliest die state of the variety to the latest, this is another nice example with some reflective luster of its own thanks to the dies having been repolished. Barely worn medium and tan brown with no marks of note and excellent eye appeal. Would qualify for a slightly higher grade if not for some extremely light and barely noticeable hairlines in the fields. LDS, Manley 5.0.



81. 1828 C-2 R1 AU50. 12 Stars. A choice, light brown, and slightly lustrous example of the popular 12 Stars variety. Excellent eye appeal and no detractors. E-MDS, Manley 2.0 early. In a PCGS MS62BN holder.



80. 1826 C-2 R3 VF35. Sharpness of XF45+ and there are traces of luster, but a couple thin scratches across Liberty's face and in the obverse fields require a deduction. Still a nice specimen of this fairly scarce variety and has attractive medium brown color. EDS, Manley 1.0.



82. 1828 C-2 R1 AU50. 12 Stars. Another nice example, this one even a tad sharper and with a bit more luster, but a few minor marks on the obverse portrait and in the fields preclude a higher AU grade. Nice cartwheel luster and traces of mint red at the peripheries. MDS, Manley 2.0.

85. 1832 C-2 R2 XF45. Slightly lustrous medium brown with tan in the protected areas. More like an AU coin, but a few spots of verdigris on the obverse hold it back a bit. Still an attractive coin and a good example of the late die state, Manley 3.0



83. 1828 C-3 R1 AU55. A beautiful piece with just about flawless surfaces. Frosty light steel and tan with some pink and blue overtones on the reverse, the color somewhat mottled but very attractive. Soft cartwheel luster on both sides, has the eye appeal of a mint state coin with just a tiny bit of rub on the highpoints. M-LDS, Manley 3.0. *Ex Bill Tivol.*

86. 1832 Elongated Half Cent from the 1939 New York World's Fair. Following the theme of the elongated half cent from the Columbian Exposition in last year's EAC Sale, here we have another, equally rare item from the 1939 New York World's Fair. This is the variety featuring the iconic Firestone building. Enough detail shows on the reverse of the half cent to determine this was an 1832 C-2 that some interesting person fed into the elongating machine.



84. 1832 C-1 R2 AU50. Lustrous surfaces and close to mint state, though the reverse has some orange color and very faint hairlines remaining from an old cleaning. Strong cartwheel luster on both sides and the obverse is an attractive deep olive brown. *Ex Willard C. Blaisdell – R. Tettenhorst/EPPNES (Missouri Cabinet).*

87. 1835 C-1 R1 AU58. A lustrous, unworn 60 coin with a slight deduction for a few carbon spots on the obverse. Attractive overall though with mark-free reddish medium brown surfaces that have frosty cartwheel luster on each side. LDS, Manley 2.0. In an old, green label PCGS MS63BN holder.



88. 1840 Electrotype Copy of Proof Original Breen 1-A MS60. A high quality electrotype and nicely preserved, there is still some flashy original color remaining on the copper plating.



89. 1849 C-1 R2 AU50. Predominantly light golden tan with some chocolate and sea-green toning mixed in. Perhaps dipped and retoned as the color is a bit unusual, but attractive nonetheless. Low spots cover portions of the reverse due to grease on the die.



90. 1850 C-1 R2 AU50+. A sharply struck 1850 with full lines in all of the stars and bold dentils on both sides. Very pleasing color, an even chocolate brown, and no marks, there are just a handful of tiny carbon spots on each side.



92. "1852" Altered Date Half Cent AU50. Here's an alteration you don't see everyday. An 1853 half cent with the bottom half of the 3 rather skillfully changed to look like a 2. The coin has sharp detail and nice chocolate brown color – it doesn't appear the work done to the date affected the obverse toning.



91. 1851 C-1 R1 MS63. A fresh, original, mostly red piece with rich orange-copper color and bold cartwheel luster on each side. There are a few of the typically seen carbon spots, but none are large or individually distracting. Contact marks are few and unobtrusive as well. Only slightly toned down on the devices, probably 70% of the original mint color remains. In an NGC MS63RB holder.



93. 1854 C-1 R1 MS60+. Choice chocolate brown surfaces with portions of the detail on each side highlighted by mint red. Small carbon spots at star 8 and left of CENT, otherwise flawless. Notable for a planchet flaw on the rim at 3 o'clock, something quite unusual for a Braided Hair half cent. *Ex Bill Tivol.*



94. 1855 C-1 R1 MS60. Highly lustrous chocolate and steel brown surfaces with some blue and gold overtones and mint red on the reverse. There are a few carbon spots and small splashes of darker tone, but no marks of any consequence. A pretty coin.



95. 1857 C-1 R2 VF35. A pleasing mid-grade example of the last U.S. half cent. XF detail. Somewhat brassy olive brown toning, probably lightly cleaned at some point, but still nice for the grade.

LARGE CENTS



96. EAC 50th Anniversary Medal. Copper, 39mm. A beautiful medal commissioned last year by the club to celebrate 50 years since EAC's founding. Edge reads "HISTORY – EDUCATION – FRIENDSHIP." Only 300 were struck. All proceeds to EAC.



97. 1793 S-1 Electrotpe Copy VF35. A very attractive, high quality electrotpe of the famous AMERI. variety. Light chocolate brown, the surfaces with a bit of waviness and a few small blobs of extra metal. No lead showing through. Has the appearance of a 35 coin or so, but the coin it was made from was likely a bit higher grade than that.



98. 1793 S-3 R3- FR2. Fairly pleasing for a Chain cent in this grade. Has AG3 detail and is mostly just well worn. No corrosion, just some wispy hairlines and rather bright sheen from being lightly cleaned, and a few old scratches on either side of Liberty. The portrait and chain are just about fully outlined. A trace of the tops of the date can be made out, but the legends are worn away. Complete, strong vine & bars edge detail, that feature surprisingly bold given the amount of circulation. *Ex Bill Gape.*

Strong VF S-5



99. 1793 S-4 R3 BS1. Periods. A well traveled cent, worn down past FR2, but there isn't as much damage as often seen on a basal state Chain cent. Just some light porosity in the fields and scratches on the obverse. Planchet flaw at the right border. The portrait and chain are 90% outlined and enough detail is present on the obverse, including a mostly full LIBERTY, to make the attribution. Most of the edge design is visible.



100. 1793 S-4 R3 BS1. Periods. AG detail and the reverse sports a bold chain, ONE CENT, and fraction. On the obverse LIBERTY is clear and the distinctive S-4 portrait mostly outlined. Lightly rough steel brown surfaces with some scattered nicks and 4 or 5 rather heavy rim dents. Only portions of the edge design remain. Has its issues, but it's still a Chain cent and therefore possesses a unique charm regardless of condition.



101. 1793 S-5 R4 VF20. Vine & Bars Edge. A bold and very pleasing Sheldon 5, a rather scarce and distinctive variety as the only Wreath cent with the large punches used for the date and LIBERTY as on the Chain cents. Glossy brown surfaces with hardly any marks, some as-struck, thin planchet striations on the obverse affect the eye appeal slightly, but the impeccable quality otherwise is undeniable and this is a great coin overall. Medium brown overall with some subtle chocolate woodgrain. EDS, Breen I. In a PCGS VF25 holder. *Ex "A southern gentleman" – Stack's 6/1989, lot 1003 – Bowers & Merena 9/1992, lot 1060 – CVM – Dr. Willard Carmel, Superior 9/1997, lot 148.*



102. 1793 S-6 R3 AG3+. Vine & Bars Edge. Sharpness VG10 or so, but there was some repair work done to the upper obverse and opposing reverse where there probably used to be a hole. Much of the hair detail was smoothed and ERTY and the upper portion of the hair re-engraved, though it's a bit too rounded on top and Miss Liberty's hair-do looks a bit "off." Clear date and legends.



103. 1793 S-6 R3 AG3. Vine & Bars Edge. The so-called "Sprung Die" variety and the obverse bulge behind Liberty's hair that gave it that name is clear on this example. Decent medium to dark brown surfaces that are just a tad rough and have a handful of nicks. G4 detail overall, a bit sharper on the obverse than the reverse, a majority of the date and legends can be made out. *Ex Bill Gape.*



104. 1793 S-6 R3 AG3. Vine & Bars Edge. G6 detail, the surfaces are tan and steel in color and evenly granular across each side. No significant marks. The legends are all visible, but the date mostly indistinct due to the roughness. Fairly bold portrait and reverse wreath so this is still a decent and accessible type coin. Vine & bars visible most of the way around the edge. *Ex Bill Gape.*

105. 1793 S-8 R3 VG7. Vine & Bars Edge. A well detailed example with sharpness in the VF20 range. Dark olive brown surfaces that have some streaky roughness and a bit of scaly corrosion suggesting this cent spent some time underground. No marks though, and this is a presentable piece in spite of the roughness. Edge design weak but partially visible. MDS, Brcn II. *Ex Bill Gape.*

Choice "Smith Cent," ex Ruby



106. 1793 S-9 Electrotype Copy XF40. An impressive old electrotype, probably made in the mid 19th century. Glossy reddish brown surfaces with a few tiny traces of lead on the highpoints. Some of the reverse detail is a bit "blobby" but overall this is a well executed copy. Plain edge.



109. 1793 Wreath Cent Smith Counterfeit. A charming piece and excellent example of the mid 19th century work of "Smith of Ann Street," William D. Smith of New York City who re-engraved common, worn large cents in a distinctive and unmistakable style to appear as choice 1793 cents. This piece was made to resemble an S-8 and the planchet used was probably that of a well worn Wreath cent, though it was further planed down before the engraving was done and weighs only 9.7 grams. Each side has been completely redesigned. These little works of art are fascinating mementos from the earliest days of coin collecting in America and are highly desirable today. This is a choice, pedigreed piece and will see strong bidding. *Dr. Charles L. Ruby, Superior 2/1974, lot 325 - Denis Loring - Maynard Schwartz - Stack's/Bowers 9/2011, lot 2290.*



107. 1793 S-10 R4 VG7. Vine & Bars Edge. Pleasing light brown color and just about VG detail. There is some minor porosity on each side and signs of being lightly burished on the obverse, but no other damage and the overall appearance is decent. All the major detail is clear. Edge detail complete, weak in a few places. *Ex Bill Tivol.*



110. Electrotype Copy of a 1793 Wreath Cent Smith Counterfeit. An old electrotype copy, probably made not too long after Smith engraved the original. Similar in style to the piece above, although on this one the reverse was clearly patterned after reverse F (of S-5, 6, 7, and NC-5) instead of G. A really interesting item and the only such piece we know about. *Ex Miller 11/3/1974 - Jules Reiver - 2007 EAC Sale, lot 126.*



108. 1793 S-11b R4 AG3+. Lettered Edge, double leaves. Two-tone surfaces with granular dark brown fields and smooth chocolate devices. Glossy and no major marks, what might appear to be a scratch under LIBERTY is actually a thin planchet lamination. G6 detail and the date and legends are mostly clear, weak in a few areas due to roughness. The edge lettering and double leaf are very bold.



111. 1793 S-12 Electrotype Copy XF40. A nice electrotype copy of a very important coin – the Dr. French-ANS finest known S-12. Well executed detail on both sides and smooth surfaces – all of the pedigree markers of the ANS coin are clear. Rich reddish brown in color with a bit of underlying lead showing through on the cheek and a few reverse leaves. **A donated lot from the Liberty Cap Foundation, all proceeds to EAC.**



114. 1794 S-17a R5- G4. Head of '93, Edge of '93. Here come the '94s. And this is an interesting example of the first Sheldon numbered variety. The planchet is rather broad and oddly shaped, 17a does often come on slightly oval planchets but this is different. This piece was probably either double struck or restruck over a spoiled blank, causing the metal to flow out a bit further. Hard to say for sure because the surfaces were burnished, obscuring the fine detail, although it almost appears like there's an additional BE directly under those letters in LIBERTY. Nice medium brown color, the sharpness VG7 or so, but some of the definition of that grade is weakened by the aforementioned burnishing.



112. 1793 S-13 R4- FR2. Liberty Cap. A smooth VG Sheldon 13 that suffered some unfortunate rim damage. There are a few scratches on the reverse, but no corrosion and if not for the rim hits this would have been a pretty nice piece for the grade. Lightly cleaned pale olive and steel surfaces. Still a special coin, as are all '93 Caps, and will have no trouble finding someone to treasure it. *Ex Bill Gape.*



115. 1794 S-18a R6 BS1. Head of '93, Edge of '93. A very rare subvariety with only 30 or so examples known, and a majority of those grade AG and lower. This is an honest 1 coin with glossy olive brown surfaces. A few rim bumps, but mostly just well worn. The obverse portrait is outlined while the date, legends, and reverse are worn away. The "third side" however, and really the most important side for this variety, is more like VG and shows a very bold, down-pointed leaf following DOLLAR. Noyes photo # 39787. *Ex Walter Mustain.*



113. 1793 Liberty Cap Smith Counterfeit. Another very nice example of Smith's work, less involved than the Wreath cent above with just the date and LIBERTY re-engraved as well as the obverse border which was changed from the toothed dentils of '94 to the round beads of the '93 Caps. Made using a worn S-22 as the planchet, untouched detail from the host coin remaining on the reverse. Pleasing light brown surfaces.

Well-Pedigreed S-18b, Frossard-Hays Plate Coin



116. 1794 S-18b R4 VG10. Head of '93, Edge of '94. A nice quality S-18b with an old and desirable provenance. First owned by William Wallace Hays in the late 1800s and the reverse of this coin was plated in the 1893 Frossard-Hays reference to illustrate their reverse 3-4. On the edge Hays painted the H-52 attribution in white in two places, and additionally what looks to be a "51." The coin itself is a glossy and attractive F15 with a deduction for several tiny pits on both sides, most concentrated at the upper obverse. The fields appear to have been very carefully smoothed in a few places to minimize these pits, and then probably recolored, but the overall appearance is fairly natural and pleasing. MDS, Breen III. *Ex William W. Hays 1900 - Charles Steigerwalt 1906 - Charles Zng - Hays Phelps Sale, Lyman Low 3/7/1907, lot 3 - Stearns - unknown - Abner Kreisberg (privately) - Philip Van Cleave, Kagin's 1/30/1986:5021 - Corrado Romano (Worthy Coin Co.), Stack's 6/16/1987:1116 - David Palmer 1996 - Chuck Heck, Goldberg's 2/2017, lot 240.*



117. 1794 S-20b R4 G5. Head of '93, Edge of '94. A couple points sharper but the surfaces are lightly granular and the rims were tapped down a bit leaving a wire rim on each side. Still a presentable S-20 with pleasing light golden brown color and a fully detailed obverse. *Ex 2008 EAC Sale, lot 152 - Tom Keenan - Bill Gape.*



118. 1794 S-23 R4 VG10. Head of '94. Nicely detailed with just about VF sharpness. A majority of the surface is glossy, but there is some scattered granularity and a few patches of verdigris, mostly on the obverse. The only mark is a small rim nick over O in OF. Predominantly dark olive in color with some of the devices toned tan. Overall a solid example of this better '94. LDS, Breen V. *Ex Stack's 3/17/1987, lot 114 - J.R. Frankenfield 2/2001, lot 216 - Terry Denman.*



119. 1794 S-26 R2 VG10. Head of '94. Would be a choice, light brown 15 coin if not for some conspicuous marks on the obverse including a few digs and scratches on Liberty's neck. Still a lot to appreciate, and the reverse, which displays the important aspects of the die state, is quite nice. M-LDS, Breen VI.



120. 1794 S-30 R1 G4. Head of '94. An interesting piece with a small "IWG" counterstamp on the obverse. The size and style of the stamp suggests this is a jeweler or silversmith's mark, but we could not find an exact match. This cent belonged to EAC member Bill Gape and as far as he was concerned, the stamp stood for "I, William Gape." A decent, glossy coin for the grade with just a few obverse scratches. Fairly late die state.



122. 1794 S-36 R5 VG8. Head of '94. Fine detail and has pleasing tan and light olive brown color. There is some granularity on each side, heaviest at the upper reverse, and a couple rim bumps on the right side of the coin. Very respectable for this rare variety. *Ex Superior 2/16/2001, lot 2130 – Shawn Yancey – Col. Steve Ellsworth – John Koebert, Goldberg's 9/2015, lot 115.*



121. 1794 S-35 R5 AG3. Head of '94. Brassy tan brown surfaces that are just barely microgranular, but reasonably smooth in appearance. Quite nice for the grade and variety. Most of the major obverse detail is outlined, while the reverse is weaker. Rare early die state with no trace of the obverse cracks.



123. 1794 S-38 R5 VG8. Head of '94. Yet another rare 1794, this one also in solid condition. Detail on the better side of VF20 but the surfaces are lightly porous on the obverse and a bit heavier so on the reverse. Dark brown with tan on a few of the details. A good coin that's been owned by a number of prominent EACers. *Ex Gordon Wrubel (at EAC 1976) – John D. Wright 2006 – Dan Holmes – CVM 9/16/2011 – Mark Cadden.*



124. 1794 S-41 R3 VF20. Head of '94. A solid VF example struck from a fairly early state of these dies, showing just a very light version of the reverse crack through the D in UNITED. The fields and devices are free from notable marks, though there are a few rim bumps. Recolored to a deep reddish-brown, the toning reasonably even and attractive. In a PCGS VF35 holder.



125. 1794 S-41 R3 VG10. Head of '94. A very nice cent for the grade. Tan brown with darker toning in the recesses of the design, the reverse toning a bit more of a brassy yellow-tan but attractive all around. Just a few trivial marks and a small patches of extremely minor roughness on the reverse, but has no problems that are out of line for the grade. M-LDS, Breen VI.



126. 1794 S-42 R4 VG10. Head of '94. Strong Fine detail and ideal chocolate brown color, but there are several small rim nicks around each side. The fields and devices are mostly free of damage though and this remains a solid and fairly pleasing example of a better variety. *Ex Ernie Botte – Jim Rehms 2010 – Shawn Yancey 4/4/2011 – Peter Newcombe 8/21/2011 – Shawn Yancey.*



127. 1794 S-43 R2 G6. Head of '94. Light olive brown with some orange color in the protected areas remaining from an old cleaning. Several tiny nicks on each side and few light rim bumps, but no serious damage. Detail of an 8 coin, the date and legends are complete. E-MDS, Breen II.



128. 1794 S-43 R2 VG8. Head of '94. A good example of a very late die state of the variety, with a thick reverse die crack and the fields rising to the lower left and upper right of that crack. Breen V. Pleasing two-tone color, the fields quite dark, but the devices are light steely chocolate. VG10 sharpness, the surfaces with just a bit of underlying roughness in a few places and there are a few minor marks.



131. 1794 S-47 R4 F12. Head of '94. Solid VF detail and a bold representative of this fairly scarce and condition sensitive variety. Dark olive brown surfaces with steely tan highpoints. Lightly and evenly granular on both sides and there are a few minor rim bruises, but the fields and devices are nicely free of marks. MDS, Breen II. *Ex 2010 EAC Sale, lot 148.*



129. 1794 S-45 R5 AG3. Head of '94. G detail and almost all of the date and legends can be made out. Granular medium steel brown surfaces and cleaned or rubbed to an artificial orange on some of the highpoints. Thankfully no marks to report. A rare '94 and this is a representative and accessible example.



132. 1794 S-47 R4 G5. Head of '94. An interesting example that appears to be from a very late state of the dies, showing traces of the die crack through the tops of UNITED as well as what looks like die bulging at ONE CENT, the upper wreath, and STA, something we haven't encountered before on this variety. Glossy, two-tone olive and steel with some minor marks and scratches on each side. *Ex Jesse Jaycox - Tom Keenan.*



130. 1794 S-46 R3 G6. Head of '94. Glossy medium brown and olive with some tan woodgrain tone on the reverse. Appealing for the grade and has full VG7 detail, there are just a few nicks and scratches on the portrait that lower the grade a bit. The reverse is problem-free, a line on the left side of the coin is just a thin planchet lamination. EDS, Breen I.



133. An Off-Center 1794 Starred Reverse! Well, sort of. At first glance, a stunning mint error made even more exciting when you flip it over and notice tiny stars among the reverse dentils. However, further consideration of the detail and fabric reveal this is unfortunately not an original, U.S. mint made S-48, but instead an artificially worn and aged Gallery Mint reproduction. Still a very cool item, perfect as a conversation piece at your next Boyz of '94 gathering.



135. 1794 S-54 R3 VG10. Head of '94. Nice contrasting color, light tan with dark brown in the recesses of the design. Surfaces lightly granular in texture but there are no significant marks or other distractions. Sharpness of a 15 coin. Quite appealing despite the roughness. *Ex Bill Gape.*



134. 1794 S-50 R5 F12. Head of '94. A significant example of this rare 1794. VF20 detail or very nearly so, the obverse is a fairly glossy olive brown and steel with no notable flaws other than some tiny areas of very minor granularity. The reverse is a bit dull due to more widespread microporosity and there are a few rim bumps, but this side is still presentable as well and fully detailed. MDS, Breen II. *Ex Tom Reynolds 4/2012 – Greg Hannigan – Adam Mervis, Heritage 1/10/2014, lot 2485 (certified NGC VF20) – CVM 8/8/2014 – Terry Denman.*

Pretty 1794 "Office Boy Reverse"



136. 1794 S-56 R3 VF30. Head of '94. A high quality example of this popular variety with exceptionally nice light brown color and a bit of tan woodgraining on the obverse. Hard, glossy surfaces with just a few minor contact marks on the obverse and a single old and very thin scratch between 94. These minor flaws are overwhelmed by the superbly pleasing appearance and the all important reverse can easily be called "choice." EDS, Breen I. A highlight among the 1794 cents in this sale for which there is sure to be some strong competition. *Ex C. Douglas Smith (with his envelope) – Alfred Bonard – Carlyle A. Lner, Heritage 1/2018, lot 3180.*

137. 1794 S-56 R3 VF25. Head of '94. Another significant Office Boy cent, this one from a later state of the dies, Breen IV, and Breen mentions this very coin in his description of the die state. Sharp XF detail, the surfaces dark olive brown and lightly granular. A few minor marks on the obverse, while the reverse is mostly unabraded and actually a bit glossy. Impressively defined and appealing despite the slightly imperfect surfaces, and this appeal is elevated by a great provenance. *Noyes photo #34893. Ex Henry A. Sternberg, M.H. Bolender 3/1956, lot 1553 - Robert J. Kissner, Stack's 6/1975, lot 254 - Kenneth D. Pines - Dr. C.R. Chambers 2/10/1983 - Jack H. Robinson, Superior 1/1989, lot 98 - Robinson S. Brown, Jr., Superior 1/1996, lot 79 – Phillip Clover, Heritage 9/2012, lot 3058.*

Sharp S-59, ex Garrett - Adams - Denman



138. 1794 S-56 R3 G6. Head of '94. A third S-56, which makes up for there not being an example in the last 3 EAC Sales. This one, while not as august as the preceding, is decent in its own right. VG7 detail and excellent light brown color. There is just a bit of old roughness on the obverse and a few tiny marks and scratches elsewhere. LDS, Breen IV. *Ex Gary Smith.*



139. 1794 S-59 R3 VF25. Head of '94. Nearly XF detail and the light olive brown surfaces are mostly free of marks, though there are a few nicks on the rims/edge including some small scrapes left of the fraction. A touch of microporosity in certain areas on each side, but the coin still retains some glossiness and the overall look is attractive. MDS, Breen IV. *Ex John Work Garrett - Johns Hopkins University, Stack's 3/12/1976, lot 25 - John W. Adams, Bowers & Ruddy 1982 FPL, lot 56 - Terry Denman.*



140. 1794 S-61 R4 VG10. Head of '94. Glossy light chocolate brown surfaces, the only notable mark is a scratch below NT of CENT. Quite nice for the grade. In an NGC VG10 holder. *Ex Budd 10/11/1970 - Jules Reiver, Heritage 1/2006, lot 19228. A donated lot from the Liberty Cap Foundation, all proceeds to EAC.*



142. 1794 S-64 R5- VG10. No Fraction Bar. Strong VF25 detail, the tan and olive brown surfaces are uniformly microporous, but there are very few marks, a tiny rim cut right of the date and some very light hairlines on each side are the only things to note. Detail strong everywhere except the top and bottom of the reverse, which unfortunately includes the fraction, but this is still a clear representative of the Sheldon number. LDS, Breen V. *Ex McLaughlin & Robinson 6/1986, lot 308 - Col. Steve Ellsworth 2005 - John Koebert, Goldberg's 9/2015, lot 125 - Bill Gape.*



141. 1794 S-61 R4 VG7. Head of '94. Another problem-free and attractive VG example, this one just slightly more worn. Glossy tan and chocolate brown surfaces with only trivial marks, one notable one might be a scratch below the cap. *Ex Bill Gape.*



143. 1794 S-65 R1 F12. Head of '94. A rare early die state example with no trace of the reverse crack. Strong Fine detail and clean surfaces free from notable marks. Lightly cleaned and recolored to a reddish-brown obverse and mostly golden brown reverse. *Ex Chuck Heck.*



144. 1794 S-67 R3 G6. Head of '95. VG10 detail but the surfaces are lightly granular and the obverse was carefully smoothed to minimize the appearance of the roughness. The positives are that the major detail is complete and the high-points are a pleasing tan. *Ex Bill Gape.*



145. 1794 S-69 R3 VF20. Head of '95. Glossy rich chocolate brown, a lovely coin that, in terms of surface quality and color, is the textbook example of a choice large cent. There is a rim bruise over RI in AMERICA and a smaller one outside T in LIBERTY, only trivial marks otherwise. A strong VF piece and an excellent representative of both the die variety and Head of '95 type. EDS, Breen I. Noyes photo #36326, tied for CC#16 in his census. *Ex McLaughlin & Robinson 12/1987, lot 143 - J.R. Frankenfield, Superior 2/2001, lot 271 - Terry Denman.*

146. 1794 S-69 R3 F15. Head of '95. Another nice specimen of this die pair. Glossy light olive and tan surfaces with just a few tiny contact marks, none notable, and a spot of darker tone on the reverse wreath. A fully detailed piece with solid eye appeal. MDS, Breen II.

1794 S-71, ex Anderson-Dupont



147. 1794 S-71 R2 VF35. Head of '95. A superb and distinctive cent that has a long, impressive history. Described by Sheldon in the 1954 Anderson-Dupont sale thusly: "Extremely Fine. Splendid example of the variety. Some slight wear on the hair. Light brown, with a little discoloration of a darker nature." Sheldon also listed his estimate of value as "45 x \$1.25," indicating he considered this a 45 coin. It's not hard to see why as the surfaces of this cent are impeccable, with rich gloss and traces of what might even be called luster. Most subsequent owners have also considered it XF, although it's listed in Noyes as VF25. Our grade is just short of XF, due to the wear on the hair detail, but regardless of grade this is a special coin and worth just as much as most XFs given the choice surfaces and fine provenance. MDS, Breen IV. *Ex Anderson-Dupont, Stack's 9/1954, lot 99 - Dorothy Paschal 1968 - R.E. Naftzger, New Netherlands 11/1973, lot 392 - French's 3/1976, lot 7 - Denis Loring - Jack Robinson, Superior 1/1989, lot 128 - Tony Terranova 7/1994 - Wes Rasmussen, Heritage 1/2005, lot 3082 (where certified NGC XF45) - Al Boka, Heritage 9/2016, lot 5356.*



149. 1794 S-72 R2 VG10. Head of '95. The so-called "Exact Head of '95" variety. This is a solid piece for the grade with nice, even detail on both sides. Olive brown fields and steel devices, the surfaces a tad rough but there are no marks of any consequence. MDS, Breen III.



150. 1794 S-72 R2 G6. Head of '95. A couple points sharper with some light porosity on each side and a few larger pits on the reverse. Decent olive brown color and full detail for the grade. *Ex Bill Gape.*

148. 1794 S-71 R2 VF25. Head of '95. Pleasing red-dish-tan surfaces, there are a few tiny marks on the obverse including a rim tick off the cap, while the reverse is just about choice. A nice quality cent with excellent eye appeal. E-MDS, Breen II.



151. 1795 S-75 R3 F12. Lettered Edge. Decent olive brown and steel surfaces with just a bit of roughness off Liberty's nose and traces of microscopic granularity elsewhere in the fields. Fairly smooth in appearance and has solid F15 detail.



152. 1795 S-76b R1 VG10. Plain Edge. Choice, smooth, light olive brown surfaces that are remarkably free of post-strike problems. Full detail and the reverse legend, which tend to wear down very quickly on this variety, are just about complete. Exceptionally nice for the grade.



153. 1795 S-76b R1 VG8. Plain Edge. Another pleasing example for the grade, this one just a little more worn on the reverse legend. Two-tone color, the surfaces original, slightly glossy, and problem-free. *Ex Bill Gape.*

154. 1795 S-77 R3 VF25. Plain Edge. A lovely S-77. Glossy light chocolate brown surfaces that are perfectly choice aside from a few very light hairlines on the portrait. Sharp VF30 detail and has hard, smooth surfaces that show virtually no contact marks. The eye appeal is excellent. MDS, Breen III. Has a nice provenance as well. *Ex James Macallister 2/1945 - Judge Gaskill - New Netherlands 11/1956 - Dorothy Paschal - Hollinbeck Coin Co. - Lenard Stark - Hollinbeck/Kagin 6/1966, lot 896 - Art Kagin - CVM - Robinson S. Brown, Jr., Superior 1/27/1996, lot 110 - Craig Hamling - Tom Reynolds 4/30/2011 - Terry Denman.*



155. 1795 S-80 Electrotype Copy VF30. An impressive electrotype made from the ANS finest known S-80 Jefferson Head. Glossy reddish medium brown with no lead showing through. A donated lot from the Liberty Cap Foundation, all proceeds to EAC.



158. 1796 S-85 R5- VG8. Liberty Cap. A better than average example of this tough '96 Cap. Mostly smooth and slightly glossy steel brown surfaces that don't have any of the usual corrosion, just a few small rim nicks. Some subtle orange color on the portrait and left obverse field, only visible at certain angles, indicates this coin was probably recolored. Pleasing overall and has strong Fine detail. Noyes photo #60281, tied for CC#16 in his census.



156. 1796 S-83 R4 F15. Liberty Cap. A handsome, dark olive brown cent and overall notably nice example of this tough variety. Sharpness solidly VF20, there is just some light, even microgranularity across each side, mostly in the fields. Hardly any marks and has a pleasing appearance despite the surfaces not being perfectly smooth. E-MDS. Noyes photo #28819 and CC#11 in his census.



159. 1796 S-86 R5 VG10. Liberty Cap. In our opinion, the second rarest '96 Cap, trailing only S-90. This variety seems to almost always come in low grade and a VG10 is a noteworthy and much better than usual example. Original medium brown surfaces with a few minor scratches and tiny nicks, but nothing too disturbing for the grade. Full detail on each side, just makes F12 in terms of sharpness. Noyes photo #60282 and tied for CC#16 in his census.



157. 1796 S-83 R4 G5. Liberty Cap. Glossy medium brown and steel. A point sharper with some rim bumps, a couple light scratches, and a bit of minor verdigris on the 9 of the date and the bust. Nice full detail for the grade on both sides.



160. 1796 S-88 R4 F12. Liberty Cap. Sharpness of a 25 coin, but the obverse is lightly pitted on its left side. The reverse is nicer with just a bit of roughness at the borders. Dark olive brown surfaces that are glossy where not affected by the corrosion. A worthwhile piece given the sharpness and not totally devoid of positive eye appeal. Tiny curved planchet clip at 11 o'clock. EDS, Breen I. Noyes photo #39726.



162. 1796 S-88 R4 G4. Liberty Cap. VG detail but rough in places, heavier so on the reverse, and the obverse was burnished. No serious marks, just a little scraping on the reverse rims. Steel brown and chocolate in color, not overly dark.



161. 1796 S-88 R4 F12. Liberty Cap. Glossy olive brown with pale tan devices. Smooth surfaces with next to no marks. What looks like a curved scratch before Liberty's face and through the reverse wreath is actually a stray planchet cutter impression - interesting and as made. Excellent eye appeal for the grade although the coin has a slightly bright appearance and was likely wiped or very lightly burnished at some point. Still, quite a nice cent, especially for a '96 Cap. LDS, Breen II. Noyes photo #38346. Ex *M.H. Bolender* 3/1956, lot 1589 - *R.E. Naftzger, Jr.*, *New Netherlands* 11/1973, lot 407 - *John M. Ward, Jr.*, *Superior* 9/5/2004, lot 245. A donated lot from the Liberty Cap Foundation, all proceeds to EAC.



163. 1796 S-89 R3 VG8+. Liberty Cap. Sharpness approaching Fine, but there is light rim damage on each side, a couple very thin scratches under the cap, and a slightly burnished-like gloss to the surfaces. Medium olive brown, the color fairly pleasing. An appealing example despite the minor issues and this is a variety that becomes very tough and expensive in grades above VG.



164. 1796 S-89 R3 G4. Liberty Cap. Glossy medium brown. Small planchet clip at 8 o'clock. A few thin scratches on the reverse and some trivial marks elsewhere. Obverse detail is full, the reverse worn on the upper and lower peripheries. Nice for the grade. Removed from a PCGS G4 holder and the label is included.



165. 1796 S-90 R5+ AG3. Liberty Cap. The key variety among the 1796 Liberty Caps. This example has glossy medium brown surfaces, G4+ detail, and would have been quite nice for the grade if not for two large obverse digs - one on Liberty's ear and one on the cap, and these show through as bulges on the reverse. Dies rotated 180° as usual. In an NGC Good details holder.



166. 1796 S-93 R3 VG10. Draped Bust, Reverse of '95. Lightly granular deep olive brown surfaces, but has strong F15 detail and no distracting marks. Smoother and slightly lighter in color on the devices. Overall a very respectable cent. EDS, Breen I, before any of the reverse breaks. *Ex 2000 EAC Sale, lot 151 - Phil Moore.*



167. 1796 S-100 R5 VG10. Draped Bust, Reverse of '97. A significant example of this rare variety that almost certainly ranks among the best dozen known. VF detail, there are many tiny pin prick marks on each side and a couple slightly larger nicks. Obverse burnished, the reverse with more natural texture. Predominantly a medium brown color, with some tan and light steel on the devices. A solid piece despite the issues and worthy of careful consideration.



168. 1796 S-103 R4+ VG7. LIHERTY, Reverse of '94. Sharpness F15 or so and all of the important detail is present on both sides. Burnished to minimize some roughness and pitting, this end mostly achieved on the obverse while the reverse still shows some pitting in the fields. Dark brown with tan devices. Small rim bruise above the I in LIHERTY, otherwise mark-free. *Ex Bill Tivol.*

S-104 Die State Discovery Coin



169. 1796 S-104 R3 G5. LIHERTY, Reverse of '97. An interesting pre-terminal die state with a thick die crack and retained cud above TY. This was the first example found and the only one we know about. A decent cent for the grade. Medium brown and steel surfaces with traces of minor roughness in the fields. Solid G6 detail including a bold date, LIHERTY, and reverse legends. Noyes photo #61527. *Ex Robert S. Carter 3/19/1970 - Del Bland - H. Jablonoski 2002 - Tom Keenan 2002 - John Muller 2006 - Tom Keenan - Bill Gape.*



170. 1796 S-105 R5- G6. Draped Bust, Reverse of '97. Sharpness F12, the olive and steel brown surfaces lightly granular and there are several small pits on the obverse. A few minor scratches on either side, not too much in the way of marks. Nice strong detail and certainly a respectable example, S-105 has an extremely low condition census and only a handful of survivors that grade better than VG. Comes with both a Bland and Grellman grading card, each one marked VG7. Listed as G6 in Noyes, tied for CC#16. MDS, Breen II. *Ex Denis Loring 3/29/1980 - Dan Holmes.*



171. 1796 S-107 R5+ VG7. Draped Bust, Reverse of '94. One of the really tough '96 Busts that's definitely deserving of its rarity rating given the infrequency with which it appears for sale. This is a relatively nice example with Fine detail and just lightly granular surfaces. No serious marks and decent olive brown color. EDS, Breen I. If you lack this variety, and I know many of you do, make sure to consider this one - it has a lot going for it. Noyes photo #26653. *Ex George Ramont 3/21/1972 - Jules Reiver, Heritage 1/2006, lot 19291.*



172. 1796 S-108 R4 VG10. Draped Bust, Reverse of '94. A pleasing cent with full detail and good quality surfaces for a '96 Bust. Natural olive brown with some chocolate on the devices. A bit of very minor roughness in a few places and some very light scratches keep this from grading Fine, but still an appealing coin. LDS, Breen V. Noyes photo #60292.



175. 1796 S-110 R3 VG8. Draped Bust, Reverse of '94. Glossy medium brown surfaces that are smooth, hard, and exceptionally nice for the grade and type. Just a couple little circulation marks, far less than normal. TDS, Breen X, with a strong eud above TY and fully developed obverse cracks. The smooth surfaces on this example allow for close study of the die state.



173. 1796 S-109 R3 VG10. Draped Bust, Reverse of '94. Excellent medium brown color. The fields show a bit of underlying roughness that was lightly smoothed down, but very carefully so. F+ detail and the oft-weak reverse on this variety is complete and strong on this example. No marks of note. Noyes photo #59522.



176. 1796 S-110 R3 G4. Draped Bust, Reverse of '94. Attractive two-tone color contrasting sharply between the fields and devices and causing the detail to stand out boldly for the grade. No notable marks, the surfaces just a smidge microgranular and the planchet is very slightly bent.



174. 1796 S-110 R3 VG8. Draped Bust, Reverse of '94. Steel brown and deep olive surfaces that might not be perfectly smooth, but are pretty acceptable for the grade. Slightly rough texture in the fields due to microgranularity and tiny contact marks and there are a few spot of raised corrosion off the bust. Strong, complete obverse detail, the major reverse detail present as well though weaker as usual. Noyes photo #60293.



177. 1796 S-112 R4 VG10. Draped Bust, Reverse of '94. A very sharp coin with detail in the VF30 range, if not higher. Probably spent some time underground following a brief stint in circulation, uniform fine porosity covers the fields and devices of each side and there are a few specks of verdigris in the reverse wreath detail. The color is a medium brown, not as dark as you might expect, and this betters the overall appearance. *Ex Bill Gape.*



178. 1796 S-114 R5- VG10. Draped Bust, Reverse of '95. Pleasing quality for this tough variety. Strong Fine sharpness and the surfaces are a glossy two-tone dark olive and steel. Minor granularity in the fields and some scattered tiny nicks and scratches. EDS, Breen I.



179. 1796 S-116 R5- F15. Draped Bust, Reverse of '95. Glossy pale medium brown surfaces, excellent quality in terms of lack of corrosion, but there are a handful of small rim disturbances. A conspicuous line across the obverse appears to be a thin lamination that was on the planchet prior to striking. Nice eye appeal overall thanks to the smooth surfaces and strong VF detail. Tied for CC#11 in the Noyes census, his photo #31101.



180. 1796 S-117 R5+ FR2. Draped Bust, Reverse of '97. Among the toughest Sheldon numbered '96 Busts and although this piece is well worn, it doesn't have any of the corrosion or damage that often plagues lower grade examples. Pale steel brown surfaces that were lightly cleaned and have some wispy hairlines on each side. The important diagnostics of the dies are clear.



181. 1796 S-119 R3 VF25. Draped Bust, Reverse of '97. Sharpness in the VF35 range. Glossy surfaces recolored to a reddish medium brown and there are signs of careful smoothing on a few lightly granular areas of the fields. Nicely struck and even with the light wear this piece shows almost as much detail as some of the weakly struck UNC examples from the Nichols find. EDS, Breen I with just a tiny rim break over the TA of STATES on the reverse. *Ex Bill Gape.*



182. 1796 NC-3 R6 BS1. Draped Bust, Reverse of '97. Well this poor cent had a rough life. There is a giant, perfectly round hole drilled through the center and two, crude square nail holes on either side of it. What this was intended to be I cannot say, but someone clearly had a purpose in mind for it. The good (or bad) news is that the remaining detail is easily attributable as NC-3, of which there are only a couple dozen examples known. This could certainly be one of the most memorable!



183. 1796 NC-4 R5+ VG7. Draped Bust, Reverse of '95. A pleasing example of one of the more available NC varieties. Glossy medium brown surfaces with only trivial circulation marks - a bit of damage on the R in LIBERTY the only thing to note. All of the major detail is clear. Noyes photo #29364. Ex Bob Shalowitz & Jack Beymer 1/11/1992 - Wes Rasmussen, *Heritage* 1/2005, lot 3115 (where certified NGC VG8).



184. 1797 S-122 R5+ G4. Reverse of '97, Stems. A key 1797 variety and almost always found in low grade, only a few grade better than VG. This example has F12 detail or so but some of the definition is weakened by porosity affecting the fields and devices on each side. Dark olive brown color and thankfully no major marks. The attribution points are clear.



187. 1797 S-125 R5 G6. Reverse of '97, Stems. Sharpness of F12 but there is some rather heavy corrosion on the left side of the reverse, light granularity in the fields in a few other places, and some scratches on the portrait. Glossy light olive and steel where not affected by roughness. The obverse presents nicely and is a great example of the clashmarks and bulging associated with the late state of this scarce die pair. In an NGC VF details holder. *Ex Gordon Wrubel 9/23/1970 - Jules Reiver, Heritage 1/2006, lot 19320.*



185. 1797 S-123 R4 VG10. Reverse of '97, Stems. F15 detail but lightly cleaned and has some minor roughness in the fields. The surfaces are fairly glossy, light olive brown and steel in color, and overall pretty decent looking. A bit weakly struck at the lower obverse and upper reverse. Scarce and unusual as a circulated example - a majority of this variety's survivorship is made up of mint state pieces from the Nichols find. MDS, Breen II. *Ex Bill Gape.*



188. 1797 S-125 R5 AG3. Reverse of '97, Stems. Another late die state example, this one G4 with medium brown surfaces that are glossy and decent on the obverse and granular on the reverse with some brick red scale at the borders.



186. 1797 S-124 R5+ AG3. Double Struck. Reverse of '97, Stems. A very late die state example with severe obverse swelling which obscures most of the date. Double struck about 5% off center and an extra row of dentils is seen at the upper obverse and lower reverse. Medium brown and tan, the surfaces lightly granular under a glossy patina. *Ex Bill Gape.*



189. 1797 S-126 R3 VF25. Reverse of '97, Stems. Sharp XF40 detail. Somewhat dark olive brown surfaces with some minor surfaces issues - traces of granularity in the fields and a few nicks and scratches on the obverse. Not perfect but an impressive looking cent thanks to the sharpness. E-MDS, Breen II. *Ex Bill Gape.*

Dramatic Double Struck S-130



190. 1797 S-126 R3 G5. Reverse of '97, Stems. Sharpness of VG8 and has good medium brown color. Lightly burnished to smooth out some areas of minor pitting. Planchet slightly bent. Later die state with the obverse break from the rim to Liberty's neck.



191. 1797 S-129 R5 VG8. Reverse of '97, Stems. For this legitimately rare variety, this is a solid and noteworthy example. VG10 sharpness with dark olive brown surfaces that are just a bit microgranular. Very few marks and to the naked eye has a fairly smooth and pleasing appearance. Nicely struck EDS, Breen I. Noyes photo #36733. Ex Carvin Goodridge 2/12/1982 - Jack Robinson, Superior 1/29/1989, lot 254 - J.R. Frankenfield, Superior 2/2001, lot 358 - Terry Denman.



192. 1797 S-130 R2 F12. Double Struck. Reverse of '97, Stems. A fantastic mint error, boldly double struck with a 150° rotation between strikes so that LIBERTY is seen at both the upper and lower obverse, and AMERICA the same way on the reverse. VF25 detail, microporous and cleaned golden-brown surfaces. Plated in the error section of Breen's large cent encyclopedia on page 842. An exciting piece. Ex Anderson-Dupont, Stack's 9/1954, lot 163a - Heritage 1/2013, lot 3834.

Rare Early Die State S-136



193. 1797 S-132 R5+ G4. No Stems. Probably the rarest of the 1797 Stemless Wreath die varieties (not including NC-8 of course). VG8 detail, the surfaces lightly porous and there was some rather crude tooling done on the portrait. Dark olive brown with some of the devices toned to tan.



194. 1797 S-136 R3 VF20. Reverse of '97, Stems. Nice, glossy surfaces and pleasing pale brown and light steel color. No marks or roughness, the surfaces are a tad bright but still quite appealing. A great example of the variety and especially remarkable for its very early die state, showing a fresh, crisp reverse die. Rare as such. Noyes photo #34258. Ex Butterfield, Johnson, Gillio (Los Angeles) 1/31/1995, lot 2064.



195. 1797 S-138 R1 VF30. Reverse of '97, Stems. A handsome deep brown cent with lighter steel toning on the highpoints. The surfaces are glossy and mostly problem-free, there are just a few small rim nicks on the obverse - one under the date and one before LIBERTY, as well as a little nick near Liberty's eye. The reverse is choice. MDS, Breen III. In a PCGS XF40 holder.



196. 1797 S-138 R1 G4. Reverse of '97, Stems. A point sharper with some minor roughness in the fields. Reddish olive brown color. Later die state with heavy swelling on the reverse.



197. 1797 S-141 R4 F12. Reverse of '97, Stems. Medium steel brown surfaces that are somewhat matte in texture due to even, very light microporosity. Free of notable marks. Strong VF detail, crisply defined for the grade on each side thanks to the early die state.



198. 1797 S-141 R4 F12. Reverse of '97, Stems. Quite sharp, there isn't much wear at all and the technical grade of the detail is at least XF40. Golden brown surfaces that range from smooth and glossy to microporous to more heavily rough in a few places - off the hair ribbons, at the date, and the upper reverse. There are signs of smoothing in and around some of the rougher areas. Imperfect but still has appeal as a very sharp example of the die variety. M-LDS, Breen III. *Ex W.E. Johnson, American Auction Association (Bowers & Ruddy) 5/19/1972, lot 410 - Robinson S. Brown, Jr., Superior 9/30/1986, lot 202 - Goldberg's 2/3/2013, lot 272 - CVM 4/25/2013 - Terry Denman.*

S-144 Rarity, ex Newcomb-Sheldon



199. 1797 S-142 R5 VG8. Reverse of '97, Stems. Has the sharpness of a 25 coin and even with a steep net grade down to VG, this should still be counted among the best dozen or so known of this challenging Sheldon number. Generally medium brown color, the surfaces with areas of fine porosity and some scratches on the portrait. *Ex Bill Gape.*



202. 1798 S-144 R5+ G5. Style 1 Hair. A revered large cent rarity and without a doubt the most challenging Sheldon-numbered 1798 variety. This is a solid and relatively pleasing example with lightly rough, carefully smoothed, dark olive surfaces. The only mark to note is a little dent above the R in LIBERTY. VG detail and the major design elements are strong and complete for the grade on both sides. M-LDS, Breen III (late) showing a strong die crack at OF and a ridge of swelling from TA in STATES to ER in AMERICA. Has a great provenance including Sheldon who, it appears, owned this example during the period when he would have been describing the variety for *Early American Cents* in the late 1940s, when there were just 7 specimens known. In a PCGS "Genuine" holder. *Ex Howard R. Newcomb, J.C. Morgenthau & Co. #458 2/7/1945, lot 179 - Dr: William H. Sheldon - Dorothy Paschal 11/25/1977 - Dr: Thomas S. Chalkley, Superior 1/28/1990, lot 331 - Robinson S. Brown, Jr., Superior 1/27/1996, lot 205 - Goldberg's 8/31/2014, lot 189 - Bill Gape.*



200. 1797 S-143 R5 VG8. No Stems. Glossy dark olive brown surfaces with a bit of underlying granularity on the left side of the obverse. Detail is VG10 and the overall look decent and more than acceptable for this tough variety. *Ex Bowers & Merena 3/21/1996, lot 158 - Superior 9/23/1998, lot 1170 - Terry Denman.*



203. 1798 S-146 R5- G6+. Style 1 Hair. An appealing example for the grade with corrosion-free light steel brown surfaces. Mostly just normal circulation marks, a scrape on the rim under the date is the only thing to note. Full date and legends. *Ex Superior 11/18/2006, lot 743 - Phil Moore.*



201. 1797 S-143 R5 G5. No Stems. Nice medium brown color and decent surface quality. A couple points sharper than our grade, the deduction for some vertical scratches on the portrait, small pits above the hair ribbons, and a few reverse scratches. Most of the major detail is clear, weak at OF AMERICA. *Ex Bill Gape.*

Sharp S-149



204. 1798 S-146 R5- G6. Style 1 Hair. Another example in decent lower grade. This one from a later die state with rust and scaling at the obverse borders. VG8 detail and nice chocolate brown color but the surfaces were lightly bur-nished. *Ex Bill Gape.*



205. 1798 S-147 R5- VG8. Style 1 Hair. This is another tough 1798 variety that usually comes significantly im-paired. The present piece is attractive, if somewhat imper-fect. F12 detail and nice, light olive-tan color. Deduction in grade for being lightly cleaned and some roughness in the left obverse field. A few minor marks on each side, none severe. Removed from an NGC F15 holder and the label is included. *Ex Dong Bird 3/1995 - Wes Rasmussen, Heritage 1/2005, lot 3171 - Mike Iatesta, Goldberg's 9/25/2007, lot 2115 - Phil Moore.*



206. 1798 S-147 R5- VG7+. Style 1 Hair. Pleasing, orig-inal light brown surfaces with just some light contact marks that are consistent with the grade. Far above average quality for this variety. Noyes photo #59265 (as VG8). *Ex 2005 EAC Sale, lot 166.*



207. 1798 S-149 R4+ VG8. Style 1 Hair. A noteworthy example of a variety that has a notoriously low condition census. This example has strong VF20 detail, the definition hampered somewhat by light surface erosion, but there are traces of original gloss in some of the protected areas and this was clearly a pretty high grade coin before it proba-bly spent some time underground. No marks at all. Doug Smith's envelope for this coin notes: "...Dr. Sheldon com-pared it with his own specimen and called both VF-20 coins, tied for finest known." A generous assessment perhaps, but who knows what it might look like after a good "Sheldoniz-ing." Not that we're recommending that of course, this is a great coin just the way it is! In an NGC VF details holder. *Ex J.M. Miller 10/24/1053 - C. Douglas Smith - Jack Stick-el, Heritage 4/2011, lot 4026 - Terry Denman.*



208. 1798 S-149 R4+ VG7. Style 1 Hair. Another solid example of this rarity. Lightly granular dark olive brown surfaces, the reverse a bit rougher than the obverse. Both sides are slightly glossy though and the obverse is very presentable. EDS, Breen I. *Ex 2010 EAC Sale, lot 205 - Rod Burress - Bill Gape.*

Choice S-153



209. 1798 S-149 R4+ G5. Style 1 Hair. Don't be fooled by the three examples in the sale here - S-149 is a truly tough variety and every bit of its R4+ rating. We'll call it an embarrassment of riches. This is a late die state example with buckling on the reverse at S OF and scaling off the bust. VG7 detail, a majority of the surfaces are smooth and glossy, but there are a few small pits with verdigris on each side. Rim bump right of the date and some scratches in the right obverse field. Pleasing olive brown color. In an NGC VF details holder.



210. 1798/7 S-150 R5 VG7. Overdate. The rare overdate variety and difficult to locate in all grades, but especially so in the pleasing VG grade offered here. Sharpness of VG10, the olive brown and steel surfaces just barely microporous and there are a few scratches on the reverse. Fairly late die state with reverse buckling and cracks. *Ex March Wells.*



211. 1798 S-153 R3 VF30. Style 1 Hair. A lovely cent with sharp detail, glossy surfaces, and rich brown color. Just a few tiny marks, no trace of roughness, and about as pleasing an overall appearance as one could hope for. Advanced die state, Breen VI, just prior to the cud forming off the bust. A premium coin and certainly ranks among the best dozen or so of this variety. Noyes photo #27638. Removed from a PCGS AU50 holder and the label is included. *Ex L.R. Davis McKinney, Jr., House of Davis McKinney 1/1964, lot 233 - Eugene Exman 1/1970 - Denis Loring 9/1970 - Dr. Dane B. Nielson - Myles Z. Gerson - Denis Loring 10/1980 - Tom Reynolds - March Wells - 2002 EAC Sale, lot 254 - CVM - Walt Husak, Heritage 2/2008, lot 2156 - Al Boka.*



212. 1798 S-153 R3 VG8. Style 1 Hair. Late die state, Breen VII, with a strong cud break off the tip of the bust. An attractive coin for the grade with smooth surfaces and nice golden-brown color. The obverse was probably lightly cleaned a while back, the toning a little mottled on that side, but the overall appearance of this cent is quite nice.



213. 1798 S-154 R4 VG8. Style 1 Hair. Smooth, problem-free surfaces. A nice example for the grade of this scarce variety. Fairly even chocolate brown color on the obverse, the reverse more mottled with some orangey-red mixed in. Probably recolored, but the texture of the surfaces is natural - not overly bright or anything. LDS, Breen III.

Sharp 1798, Reverse of '96, ex Hines-Sheldon



214. 1798 S-155 R3 VF20. Reverse of '96. Sharply detailed, close to a 40 coin in terms of lack of wear. The surfaces are a dark olive and there are traces of very minor roughness in the fields, but a majority of the surfaces are glossy and have a high grade look. Light scratch on the ear and another off the hair ribbons are the only notable marks. LDS. A great example of the Reverse of '96 type and has a nice provenance. *Ex Henry C. Hines - Dr. William H. Sheldon - Robert S. Carter, Jr. - Norman Locke 7/1984 - Sol Varon - Superior 9/1998, lot 1179.*



215. 1798 S-156 R5+ G5. Reverse of '96. F12 detail, a well-defined example of a variety that tends to come very well worn. Dark brown surfaces that are finely granular over the fields and devices and there are several slightly larger pits on each side. No notable marks. M-LDS, the crack from the rim to the bust is clear. *Ex Goldberg's 1/2014, lot 509 - Bill Gape.*



216. 1798 S-158 R4 G4. Style 1 Hair. Smooth surfaces with just minor contact marks. Nicely recolored to a light steel brown. Clear date, legends partially worn. MDS, Breen III.



218. 1798 S-159 R3 F15+. Style 1 Hair. Choice glossy chocolate brown surfaces. Remarkably nice quality with just a few trivial contact marks, a nick under the Y of LIBERTY and another above the fraction are the only ones to point out. Slightly later die state than the preceding lot, Breen V. In an NGC VF35 holder. *Ex George Ramont 8/8/1971 - Jules Reiver, Heritage 1/2006, lot 19382.*



217. 1798 S-159 R3 VF25. Style 1 Hair. Sharp VF35 detail, the surfaces fairly smooth and attractive with just small traces of underlying roughness here and there. Lightly cleaned and recolored to an even dark olive. No marks that bear mention. M-LDS, Breen IV. An excellent example with nice eye appeal despite the minor flaws. *Ex Bob Matthews, Superior 5/28/1989, lot 316 - Tom Reynolds 11/28/2003 - Terry Denman.*



220. 1798 S-162 R4 F15+. Style 1 Hair. Glossy medium brown surfaces with lighter steel toning on the devices. Sharpness essentially VF and there are not many flaws to report – just some light contact marks and a small spot of verdigris on the reverse rim left of the fraction. Well-struck throughout, close to a 20 coin and certainly with the eye appeal of that grade. MDS, Breen state II. Removed from an NGC VF20 holder and the label is included.



221. 1798 S-163 R4 F15. Style 1 Hair. Would make a nice companion piece for the above to represent the two “unfinished top of hair” 1798 obverse dies. Similarly nice quality with original chocolate and olive brown surfaces. Close inspection reveals only minor contact marks and traces of harmless verdigris around some of the obverse detail. Struck through debris at Liberty’s eye showing sunken detail there. EDS, Breen I. Should be included in a discussion of the extended condition census for the variety. In a PCGS VF25 holder. *Ex Col. Steve Ellsworth - Greg Hannigan 10/2009 - Adam Mervis, Heritage 1/10/2014, lot 2659 - Terry Denman.*

219. 1798 S-162 R4 VF25. Style 1 Hair. A handsome cent and very high quality for the variety. Glossy dark olive surfaces, the obverse mostly smooth while the reverse is a bit more granular, mostly in the fields. There are no marks to note and overall this is a pleasing coin to look at. MDS, Breen II. A condition census contender, tied for CC#5 on Bland’s list and tied for CC#7 in Noyes, his photo #24191. *Ex Chuck Furjanic - Kagin’s 1/1975, lot 488 - Chuck Furjanic - Del Bland - Myles Z. Gerson - Dr. Philip W. Ralls, Goldberg’s 1/2014, lot 526.*



222. 1798 S-163 R4 VG8. Style 1 Hair. Glossy medium olive brown, a nice cent for the grade with just a few thin reverse scratches and small spot of minor roughness on Liberty's neck. M-LDS, Breen V. Noted as tied for CC#13 on the Tom Reynolds envelope that accompanies this coin. *Ex Tom Reynolds, EAC 2010 bourse - Gary Smith.*



225. 1798 S-168 R3 F12. Style 2 Hair. An interesting looking example due to a deep "low spot" on the obverse, obscuring the 98 of the date. This was caused by there being grease or some other debris on the obverse die when this coin was struck. Quite sharp, VF30 or so detail, but there is some light roughness at the obverse borders and in the reverse fields more broadly. Lightly cleaned, the color is a rather attractive light olive and golden-brown but the surfaces are a bit bright. LDS, Breen IV.



223. 1798 S-164 R4 VG8. Style 1 Hair. A few points sharper with just trace microgranularity in the fields and a scratch from the rim over Liberty's cheek. Nice two-tone light and medium brown and a fairly pleasing appearance overall for the grade. E-MDS. *Ex Bill Gape.*



224. 1798 S-166 R1 F15. Style 2 Hair. Smooth and slightly glossy light olive and steel surfaces. Probably cleaned and recolored but the result is attractive. A few spots of microporosity in the reverse fields, but overall the surface quality is pretty solid. E-MDS, Breen III (early). *Ex Bill Gape.*

1798 S-170, ex 1975 EAC Sale



226. 1798 S-170 R3 VF30. Style 2 Hair. A lovely '98 with glossy pale brown surfaces and traces of mint frost in some of the protected areas. A bit of golden-tan color is seen at UNITED STATES where the original mint color only partially toned down. There are a few minor marks - a scratch across the lower hair curls, nick on the bust, and a reverse scratch under the first A in AMERICA. Either the planchet was tapered slightly thin at 5 o'clock or the dies were axially misaligned so that the detail didn't fully strike up in that area and at the opposing area of the reverse. Given the detail and surfaces, this would look more like a 40 coin if fully struck. Still excellent as is and interesting. EDS, Breen I. Noyes photo #34788, tied for CC#7 in his list. *Ex Pine Tree Auction Company (1975 EAC Sale) 2/1975, lot 716 - Jerry Bobbe - RARCOA 1980 - Robinson S. Brown, Jr., Superior 1/1996, lot 236 - Superior 6/1/1998, lot 112 - Tom Reynolds 11/26/1999 - Terry Denman.*

227. 1798 S-170 R3 F15. Style 2 Hair. Sharpness of VF30 but there is fine granularity covering portions of the surface, more so on the reverse than the obverse. Slightly glossy medium olive brown and tan. A handful of minor rim bumps but no marks affecting the detail. A strong example of the variety and not without some eye appeal. E-MDS, Breen II.

Choice XF 1798 S-172



228. 1798 S-171 R4 F15. Style 2 Hair. The very rare early die state of the variety, S-171 is almost always seen with a die break left of LIBERTY, but this coin was struck before it developed. Sharpness of a 25 coin but there are some patches of light granularity in the fields and a few small pits. Fairly glossy olive brown, the color not overly dark.



229. 1798 S-172 R2 XF45. Style 2 Hair. An absolutely gorgeous cent with perfect light chocolate brown and golden tan color, subtle cartwheel frost, and very few marks. A single nick on the nose is the only thing to point out. Sharply struck throughout and just very lightly worn on the highpoints. There are only two mint state examples known followed by several XFs - this example should definitely be included in a condition census (top 6) conversation. A great coin that hasn't been offered publicly in close to 30 years - I'd advise figuring a strong bid if you wish to take it home. MDS, Breen IV. Ex James Kelly 6/1947 - Milton A. Holmes, Stack's 10/1960, lot 407 - C. Douglas Smith 9/17/1971 - Darwin Palmer - Bob Shalowitz 6/30/1973 - Jack Robinson, Superior 1/1989, lot 349 - Doug Bird 7/30/2003 - Terry Denman.

Noteworthy 1798 S-175



230. 1798 S-173 R3- VF25. Style 2 Hair. Glossy light olive brown with some golden-tan and blue overtones. Lightly cleaned but not abrasively so and still quite attractive. Marks are few, a couple light scratches above the hair ribbons bear mention. E-MDS, Breen II and the reverse is rotated 65° CCW. Noyes photo #38135. Removed from an NGC VF30 holder and the label is included. *Ex 1999 EAC Sale, lot 219 - Wes Rasmussen, Heritage 1/2005, lot 3202.*



231. 1798 S-173 R3- VF20. Style 2 Hair. A later die state, Breen VI, with the fully developed cud over RTY. This is also a nice VF example of the variety with sharpness of VF25. Rather dark color overall, but the highpoints are toned to tan and the contrast adds to the eye appeal. Mostly smooth surfaces that are slightly glossy, there is just a dusting of light roughness and minor build up around some of the detail. Dies rotated 50° CCW. *Ex Bill Gape.*



232. 1798 S-175 R3 XF40. Style 2 Hair. An excellent cent with smooth, glossy surfaces and no marks that catch the eye. Sharpness solidly XF45, we lower the grade slightly for evidence of this coin having been lightly cleaned and nicely retoned, now predominantly light olive although some orange remains at the central reverse. This piece ranks high in the S-175 census and is worthy of consideration for top 6, condition census status. LDS, Breen VI. Noyes photo #61504. *Ex Tom Keenan - Bill Gape.*

S-176 Struck Over Conder Token



233. 1798 S-175 R3 VF25. Style 2 Hair. Another sharp example of the variety, this one with detail in the VF35 range and a nice, smooth obverse. Net grade due to many specks of raised corrosion on the reverse as well as the coin having been cleaned and recolored, now a predominantly dark olive brown with some red-brown toning on the reverse. Serves as a great example of the latest die state, Breen VI, with very clear reverse die cracks. Noyes photo #39660.



236. 1798 S-176 R4 VG7. Style 2 Hair. A fascinating and extremely rare item showing clear undertype on each side that is attributable to a Great Britain Conder token, and in particular what appears to be a 1788 Anglesey Mines halfpenny, the type with a druid head on the obverse and monogram on the reverse. The undertype is clearest around the final A in AMERICA where the second 8 from the Conder token date as well as TH of THE ANGLESEY are visible. Breen mentions another S-176 struck over the same type of token which was discovered by Richard Doty. That piece also showed a portion of the edge lettering from the token. This one doesn't appear to have anything on the edge. 1798 cents are known overstruck on a few oddball host coins, including the incredible S-170 over a British East India Company 1/48 Rupee, for instance. Perhaps Matthew Boulton was a bit short on a planchet order one day and threw in a handful of random coppers he had lying around to fill out the weight. Who knows? In a PCGS VG8 holder which mentions the overstrike. *Ex Tom Reynolds (who discovered it at a St. Louis coin show in May, 1991), Goldberg's 1/31/2016, lot 186 - Kevin Vinton 8/2016 - Tom Keenan 9/2016 - Bill Gape.*



234. 1798 S-176 R4 F12. Style 2 Hair. Strong detail, has the definition of a VF30, but the surfaces are dark and lightly porous, the roughness mostly in the fields, but the portrait is affected to some extent as well. The surface texture suggests a careful smoothing. No marks that catch the eye and the devices are a slightly lighter shade of steel brown which helps the appearance. E-MDS, Breen II. *Ex Goldberg's 5/31/2010, lot 647 - Bill Gape.*



235. 1798 S-176 R4 F12. Style 2 Hair. Similar grade and condition to the preceding lot, this is a dark, lightly granular cent with some minor pitting and specks of verdigris on the obverse. Very well defined for the variety showing the detail of a 30 coin. MDS, Breen V. In an NGC XF details holder. *Ex George Ramont - Jules Reiver; Heritage 1/2006, lot 19418. A donated lot from the Liberty Cap Foundation, all proceeds to EAC.*



237. 1798 S-177 R4+ VG8. Style 2 Hair. F12 detail with some light roughness in the fields and a few specks of verdigris here and there. Slightly glossy olive brown and steel surfaces that are largely free of marks. Complete, well-balanced detail for the grade and certainly a decent example of this scarce variety overall. E-MDS, Breen II. *Ex Superior 2/1997, lot 71 - Phil Moore.*

Attractive VF S-181



238. 1798 S-178 R5+ G4. Style 2 Hair, Reverse of '96. Detail at least VG8 and this piece offers more definition than typically seen on this rare variety. All the major design elements are at least outlined except for UNITED which is partially gone. Lightly corroded with some porosity and minor verdigris. High points orange and slightly hairlined from being cleaned. Has its fair share of condition issues, but that's what you expect from 178s. *Ex 2016 EAC Sale, lot 218 - Bill Gape.*



239. 1798 S-180 R5 VG8. Style 2 Hair. Quite nice for one of these, S-180 is a notably challenging variety that tends to come impaired and often corroded. This piece has a bit of roughness to the surfaces, but it's under a fairly glossy olive brown patina and there is no additional damage to compound it. Sharpness right around F15. Significant as well as an example of the extremely rare early die state of the variety without either of the reverse cuds. *Ex 2013 EAC Sale, lot 193.*



240. 1798 S-181 R3 VF25. Style 2 Hair. A pleasing mid-grade example of this interesting variety that features the only use of this reverse die - a distinctive one due to its very poor centering of ONE CENT within the reverse wreath. Color an attractive mixture of medium brown, light steel, and orangey-chocolate, and the surfaces have an original, slightly frosty texture. Sharpness more like VF30 but there are a few spots of verdigris on the reverse. M-LDS, Breen III, and the reverse is rotated 40° CCW. Removed from an NGC XF45 holder and the label is included.



241. 1798 S-183 R5 G6. Style 2 Hair. Sharpness VG10 and while a majority of the surfaces are problem-free glossy medium brown, there is some light porosity on the obverse including one notable rough patch on Liberty's neck. No serious marks, but on an interesting note there are several old, curved impressions from the dentils of other coins at the lower right obverse. Overall, a decent example of this tough die marriage. *Ex Bill Tivol.*



242. 1798 S-184 R2 XF40. Style 2 Hair. An exceptionally nice piece with frosty medium brown surfaces and light steel overtones. Soft cartwheel luster moves through the fields on each side and there is just very light, even wear on the highpoints. Really no marks or flaws to report - a tiny spot of carbon before AMERICA is something to note as a "pedigree marker." LDS, Breen IV. Noyes photo #37116, there undergraded at VF30. *Ex Tom Reynolds 11/29/2000 - Terry Denman.*



244. 1798 S-187 R1 F12. Style 2 Hair. A medium brown coin with F15 detail. Generally decent surfaces, the deduction is for a few minor marks and roughness on and around the obverse portrait. Fairly early die state. *Ex Bill Tivol.*

245. Pair of 1798 Die Varieties. Includes 1798 S-163 R4 AG3+. Sharpness G4 with some minor reverse marks and spots. Together with 1798 S-167 R1 G6. VG detail with a tiny bit of granularity on glossy dark olive and tan surfaces. Lot of 2 coins.



243. 1798 S-186 R2 VF25. Style 2 Hair. Appealing surfaces that have nice, natural toning and gloss. Mostly medium brown with some mottled tan and a few splashes of darker brown. A well struck coin from an earlier die state than often seen, Breen III. Noyes photo #26829. *Ex D&W Auction 10/1961 - Willard C. Blaisdell 2/8/1971 - Jules Reiver; Heritage 1/2006, lot 19436 (where certified NGC XF45) - Tom Reynolds 8/1/2008 - Terry Deuman.*

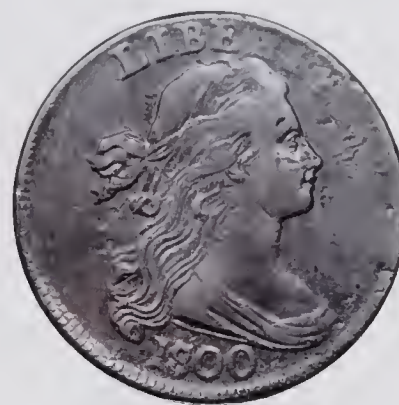


247. 1799 S-189 R2 FR2. Sharpness AG3+, almost all of the date and legends can be made out, and the devices are mostly outlined, though some areas are somewhat indistinct due to the slightly rough surfaces. Light, even granularity and some spots of verdigris. Color is orangey-brown with deeper olive in the protected areas. Enough detail is present on both sides to be certain of this cent's status as a genuine 1799. In an NCS AG details holder.



248. 1799 S-189 Electrotpe Copy VF20. A neat old electrotpe made from some unknown sharp host coin. The shells weren't fitted quite perfectly on the lead core and each side's surface appears a bit wavy. Picked up a dusting of light verdigris during its lifetime. *Ex Bill Gape.*

246. 1799 S-189 R2 AG3. And quite nice for a 1799 in that grade. Glossy surfaces that are chocolate brown with darker olive outlining the devices, allowing the remaining detail to stand out nicely. A touch of underlying granularity to the surfaces, but it is very minor. The obverse detail is on the strong side of AG with a fully outlined portrait and 90% of the date. The reverse is slightly weaker, but more than half of the detail can be made out. Just an honest, well-circulated example of this famous key date. *Ex Bill Gape.*



250. 1800/1798 S-191 R2 VG10. Overdate with Style 1 Hair. An even later die state than the preceding example, basically terminal with serious die failure in several places on the reverse and an additional die crack through ER in AMERICA. Sharpness near VF but there are some small nicks, pits, and minor scratches scattered about. Primarily slightly glossy medium olive brown. LDS, Breen VII. *Ex Bill Gape.*



251. 1800/79 S-192 R3 F15. Overdate with Style 2 Hair. Sharpness of VF30. The surfaces are very dark with lighter steel highpoints, finely granular in the fields but still rather glossy and reflective of light. A very well defined example of this overdate variety. M-LDS, Breen III.

249. 1800/1798 S-191 R2 VF20. Overdate with Style 1 Hair. A strong VF example from a fairly late die state of this variety. Medium to dark brown with light brown toning on some of the highpoints. The surfaces are not perfectly hard, but still rather glossy and very acceptable and appealing. Nick at E in LIBERTY. M-LDS, Breen VI. Removed from an old ANACS VF25 holder and the label is included. *Ex Superior 9/14/2003, lot 777 - Phil Moore.*



252. 1800/79 S-193 R4 F12. Overdate with Style 2 Hair. One of the scarcer overdate varieties of 1800 and not easy to find in Fine and better grades. This piece has just about VF20 detail and nice medium brown and chocolate color. Some obverse scratches and scrapes as well as a few areas of light porosity limit the grade. Still a very worthwhile and fairly pleasing specimen. E-MDS, Breen II. Noyes photo #37314. *Ex Larry Briggs - Jack Wadlington - 2006 EAC Sale, lot 182.*



253. 1800/79 S-193 R4 VG10. Overdate with Style 2 Hair. Glossy light steel brown surfaces with a pleasing look and just a few minor marks on the obverse. Clear date and legends. Lower grade, but a nice quality piece for this variety. E-MDS, Breen II. *Ex Dong Bird (2003 EAC bourse) 4/24/2003 - Terry Denman.*



256. 1800/79 S-196 R1 F15+. Overdate with Style 2 Hair. An attractive cent with solid VF20 detail and glossy olive brown and steel surfaces. There are some faint scratches in the obverse fields that come to light under a glass. The reverse is choice. Would make a nice selection for a mid-grade set of major varieties. E-MDS, Breen II. *Ex Tom Reynolds (1999 ANA bourse) - Terry Denman.*



254. 1800/79 S-193 R4 G5. Overdate with Style 2 Hair. A third and more typical example of S-193. Rather dark brown surfaces that are glossy but have some granularity in the fields. The date is bold and the legends fully visible but weak in a few places. *Ex Goldberg's 5/25/2008, lot 3662 - Phil Moore.*



257. 1800/79 S-196 R1 F15. Overdate with Style 2 Hair. Another solid example. This one has VF25 detail and nice obverse, but there is some verdigris on the reverse. This verdigris appears to be pretty well on top of the surfaces, not too far eaten into the metal, and may be able to be removed to some extent by a skilled conservator, but be aware it is not just loose dirt. Fairly early die state, Breen I or II. *Ex Bill Gape.*



255. 1800/79 S-195 R5 G4. Overdate with Style 2 Hair. The rarest of the non-NC overdate varieties of 1800. This is a decent low grade example. G5 detail, the light steel brown surfaces have some minor porosity in places and a few scratches extending from the center of the reverse. M-LDS, Breen IV.

Census Level 1800 S-198



259. 1800 S-200 R3 F12+. An attractive cent with VF detail and surfaces that are free from notable damage. Slightly glossy dark olive with chocolate on some of the devices, there is some extremely light granularity in the fields and a bit of verdigris in some of the details, most notably at the second S in STATES. E-MDS, Breen IV. *Ex Superior 6/2000, lot 191.*



260. 1800 S-201 R4+ VG7. Very respectable for this tough variety that seldom comes better than VG. This piece has F12 detail, but microporous surfaces and some specks of verdigris on each side. Mostly steel brown in color. Fairly early die state before much die swelling.



261. 1800 S-201 R4+ G5. An interesting cent that has reeds carefully cut all the way around the edge. Otherwise a choice, glossy chocolate brown VG7. *Ex Rod Burress - Bill Gape.*



258. 1800 S-198 R5+ VG8. A significant new S-198 discovery, right up there among the best examples known of this key 1800 variety. Finest is the Robinson-Husak-Holmes coin that grades only VG10 (or F12 depending on who you ask). It is followed by a dozen or so other VGs (mostly VG7 coins with problems) and the present piece is either clearly better or compares favorably with almost all of them. The sharpness is better than F15, very close to VF if not fully there. Steel brown surfaces with tan devices, the obverse is just lightly granular and has a few rim bumps while the reverse has some scattered pitting in addition to the light granularity. Fortunately this heavier roughness is on the back and the coin faces up quite nicely. Decent eye appeal overall thanks to the strong detail and two-tone color. A piece worth careful consideration if you lack this variety. E-MDS, Breen II. In a PCGS VF details holder.



262. 1800 S-202 R4 VG7. Close to F12 detail, but there are many tiny peck marks on each side, most obvious on the portrait. Decent steel brown surfaces otherwise with no corrosion to speak of and just a few rim bumps over LIBERTY. An intermediate die state of this fascinating variety whose life ends with some of the most spectacular die failure seen on a large cent.



263. 1800 S-202 R4 G4. Here is a good example of the aforementioned die failure. This piece was struck from a very late state of the dies, all but terminal, with extensive swelling on both sides. Breen VI. Smooth steel brown surfaces that are pretty nice for the grade with only some light hairlines. *Ex Jim Long - Rod Burrell - M&G 9/13/1997, lot 433 - Scott Barrett - Shawn Yancey - Gary Smith.*



264. 1800 S-203 R3 VF35. An excellent cent with sharp XF detail and traces of mint frost. Glossy medium brown surfaces with steel overtones. Nothing notable in terms of marks, there are just a few tiny specks of verdigris on the obverse. LDS, Breen V with strong reverse die clashing and a rim break over the M in AMERICA. Noyes photo #24111 and tied for CC#8 in his list as a VF30. In an NGC AU53 holder. *Ex Smithtown 1981 - Dong Bird - Jesse Patrick 1982 - G. Lee Kuntz, Superior 10/6/1991, lot 227 - Gary Ruttenberg, M&G 8/17/1996, lot 194 - Walt Husak - CVM 3/2006 - Dan Holmes, Goldberg's 9/6/2009, lot 384 - Adam Mervis, Heritage 1/10/2014, lot 2723 - Terry Denman.*



265. 1800 S-205 R4 F15. Glossy dark chocolate brown with lighter steel highpoints. Smooth and problem-free, showing just minor circulation marks commensurate with the grade. Very nice quality for a variety that's tough to find without roughness or other issues. MDS, Breen II. *Ex CVM 6/6/2001 - Terry Denman.*



268. 1800 S-212 R3 VF20. Glossy olive brown and steel, the surfaces smooth and attractive, a few minor rim ticks on the obverse bear mention but the fields are remarkably clean. MDS, Breen IV, with a fine die crack from the forehead to the rim and some reverse die rust.

The "Centerfold" 1800 NC-3



266. 1800 S-210 R5 FR2. Sharpness close to G, but there are old scratches on each side. Decent surfaces otherwise with medium brown color and just lightly rough fields. M-LDS and the arcing obverse die crack that confirms the attribution is clear.



269. 1800 NC-3 R5+ G4. A rare cent with an amusing backstory. This coin was part of a group lot of 15 supposedly common and low grade cents offered as lot 1920 of Steve Ivy's 2/26/1993 auction. Ironically, the cataloger went out of his way to say the lot "was not destined to grace the centerfold of PENNY-WISE, but is a good introduction to the Big Cents." As fate would have it, when the buyer, Bill Tivol, received the coins, he realized an 1800 marked S-208 was actually the 11th known example of NC-3 and that coin went on to indeed grace the centerfold of the July 1983 PENNY-WISE! This piece has G6 detail, the surfaces lightly cleaned and have some scattered pits and scratches. Not too bad though and the major detail is clear including the important "spiked I" in AMERICA. Now one of about 3 dozen known.



267. 1800 S-211 R3 VF20. Solid VF detail and pleasing reddish medium brown surfaces. The only minor flaw is few little marks on Liberty's neck. Naturally glossy and the overall eye appeal is excellent. M-LDS, Breen VI. *Ex Fred Borchardt 1991 - Robinson S. Brown, Jr., Superior 1/1996, lot 294 - Smart MacDonald, Heritage 9/1997, lot 5448 - Jack Wadlington - Dan Holmes - CVM 8/17/2011 - Terry Denman.*

The Anderson-Dupont S-213



270. 1800 NC-6 R6 AG3. Sharpness on the better side of G4, but the surfaces have some underlying granularity, a few scratches, and a very slight bend to the planchet. Contrasting dark olive and chocolate color which thankfully allows the detail to stand out nicely, including the important doubled base of F in OF on the reverse. A very rare variety with fewer than 20 examples known.

271. Pair of 1800 Die Varieties. Includes 1800 S-200 R3 G6 and 1800 S-204 R4 G5. Both are dark olive brown with lighter steel on the highpoints and have very minor underlying granularity. Full date and legends on each. Lot of 2 coins.



272. 1801 S-213 R3 VF30. A sharp and beautiful cent, lightly burnished but choice in many ways. The sharpness is solidly XF, just light wear to be found on some of the highpoints of the hair and wreath detail. Dark steely olive brown surfaces that have a thick gloss from the burnishing, which was expertly done and not overly aggressive. Aside from a few very minor rim ticks, the surfaces are completely free of marks. Impressive late die state, Breen VIII, with very strong die cracks and clashing on each side. In his description of this coin for the Anderson-Dupont catalog, Sheldon notes this coin was sold to Dupont as a proof for \$125 - a lot of money for a large cent at the time. *Ex Anderson-Dupont, Stack's 9/1954, lot 312 - Tory & Toby Szymanski "TAD", Stack's 2/1976, lot 55 - C. Douglas Smith 12/1978 - John Wright 1/2006 - M&G 4/3/2006 - Dan Holmes, Goldberg's 9/6/2009, lot 403 - Terry Dennen.*



274. 1801 S-215 R4+ VG8. Steel brown surfaces that are problem-free except for some very faint hairlines from an old, light cleaning. No corrosion or notable marks. MDS, Breen V. Overall nice quality for this variety and much better than usually encountered. *Ex Rod Burress - Bill Gape.*



275. 1801 S-215 R4+ VG8. Another solid example of this tough variety, this one with excellent medium brown color and nearly Fine detail. There are just a few patches of minor reddish roughness, most notable at RI of AMERICA, and tiny spots of verdigris. Nice eye appeal in general. MDS, Breen V. *Ex Dorothy Paschal - C. Douglas Smith - Fred Borchardt - Walter Reed - Col. Steve Ellsworth 4/26/2003 - Terry Denman.*



273. 1801 S-214 R3 XF40. Slightly lustrous, golden olive brown surfaces with some areas of darker olive and maroon toning. Very little wear, although the lower right obverse and upper right reverse are weakly struck due to axial die misalignment - a standard feature of late die state pieces. Given the high grade surfaces and frosty luster, this would easily be a 45 or 50 coin if fully struck. No marks of any real importance. LDS, Breen III. A high quality example of the variety and a condition census contender. In a PCGS AU53 holder. *Ex Bowers & Merena 9/1996, lot 32 - Don Valenziano, Jr. - M&G 1/1997, lot 242 - Tom Reynolds - Walt Husak, Heritage 2/2008, lot 2217 - Tom Reynolds 11/2010 - Terry Denman.*



276. 1801 S-218 R5+ G4. Three Errors. A rare and very popular Sheldon number, muling the "3 Errors reverse" with the distinctive and seldom seen "LIBERTY far right" obverse. This example has G6 detail and decent olive and steely tan brown color. Lightly granular throughout with some heavier roughness above the portrait and right of the fraction. Dig at center obverse. The date is clear, LIBERTY partially visible, and the 3 errors are strong. *Ex Jim Long - Bill Gape.*



277. 1801 S-218 R5+ AG3. Three Errors. A second example of this rarity, this one with detail that might be in the Fine range, but the obverse is weakened by rather heavy corrosion. Reverse a bit better with the roughness relegated mostly to the fields. Clear attribution points including most of LIBERTY and the 3 errors - no doubt a 218 and there are many collectors who would be happy to own this piece. In an NGC VG details holder.



278. 1801 S-219 R2 F15. Three Errors. A boldly defined example of this ever popular *Red Book* variety. Sharpness of VF25, but lightly burnished and there are several tiny pits on the obverse as well as a larger rough patch at the R in LIBERTY. The reverse is much better with just a single pit under the top left leaf. Pleasing medium brown color. Overall a fairly attractive piece despite the problems and offers a lot to appreciate. MDS, Breen IV.



279. 1801 S-219 R2 VG8+. Three Errors. Pleasing, original surfaces and a very nice example for the grade. Slightly glossy medium brown and steel, there is a touch of minor roughness in the fields in a few places, but it takes a glass to see. No marks that stand out. MDS, Breen IV.

280. 1801 S-223 R1 VF20. 1/000 Fraction. A highly appealing cent with smooth surfaces and ideal medium brown color. The obverse is choice and lovely for the grade. The reverse is nice as well but has a few minor defects - scratch from the first S in STATES to the wreath and darker, slightly rough toning between UNITED STATES and at the fraction. MDS, Breen III. *Ex Bill Gape.*



281. 1801 S-224 R1 VG8. A common variety, but this is a very rare terminal die state example, Breen V, with a strong cud over AME and thin rim break over the F in OF. A couple points sharper with some roughness and minor verdigris on the reverse. Light brown obverse, deeper reddish-brown reverse. *Ex Bill Gape.*



282. 1802 S-226 R3 VF25. A sharp XF cent with dark olive brown surfaces that have some microscopic granularity in the fields and minor verdigris surrounding some of the detail. Doesn't appear this coin circulated much as there are hardly any contact marks, very little wear, and the surfaces have a glossy, high grade look where smooth. MDS, Breen III. Slightly impaired, but a handsome cent nevertheless. *Ex Tom Reynolds 8/11/2001 - Terry Denman.*



284. 1802 S-228 R2 VF35. 1/000 Fraction. An excellent example of this popular fraction error variety. A solid XF coin, very sharp and with smooth surfaces. Slight deduction in grade due to a light cleaning from which this cent has partially retoned to a decent light olive and steel with some golden-tan overtones. Several tiny contact marks, but none are individually notable. Sharply struck EDS, Breen I. In a PCGS AU details holder.



283. 1802 S-227 R2 VF20. Sharpness VF25 or slightly better. Glossy dark chocolate with an overall very attractive look, but there are a few marks on the reverse responsible for the net grade, namely, a scrape on the rim over AM and two long nicks at the upper wreath. The obverse is close to choice with just one thin scratch at the forehead. LDS, Breen III. *Ex Philip Van Cleave, Kagin's 1/30/1986, lot 5252 - John Wright 1/2006 - M&G 4/3/2006 - Dan Holmes - 2010 EAC Sale, lot 263 - Harry Salyards, 2012 EAC Sale, lot 263.*

Significant S-238, ex Newcomb-Hines-Warfield



285. 1802 S-228 R2 VG10. 1/1000 Fraction. Glossy light olive and steel surfaces that are very nice for the grade. A little rim bump off the hair ribbons is the only thing you could nitpick. The date and legends and error fraction are all bold. Fairly late die state.



286. 1802 S-229 R2 VF20. Dark olive brown with steel toning on the highpoints. A glossy and appealing coin with the sharpness of a 25 coin. Deduction due to some nicks in the obverse fields and small scratch off the neck, as well as traces of dark scale around the portrait and date. Problem-free reverse. Intermediate die state. *Ex Bill Gape.*



287. 1802 S-233 R2 F15. Attractive light brown and steel, the surfaces original and rather glossy. The reverse has some darker olive and maroon elements to the toning and areas of slightly rough texture. Strong detail for the grade throughout and not far from VF. LDS, Breen V. *Ex Bill Gape.*



288. 1802 S-238 R4 VF20. S-238 is by far the scarcest and most challenging variety condition-wise among the non-NC 1802s, the only variety among those of which no XF or better grade specimens are known (per EAC grading). This piece is right up there among the best in terms of detail, has the sharpness of a VF30 and a mostly problem-free obverse. The reverse has areas of light porosity that necessitate the net grade. Predominantly steel brown with maroon and brick red patina as well, glossy and attractive where not affected by the minor roughness. MDS, Breen III. A great example with a century-old provenance. *Ex Howard R. Newcomb 1/10/1918 - Henry C. Hines - Oscar R. Tompkins - Thomas P. Warfield - Associated Coin Auction Co. 10/1955, lot 344 - Willard C. Blaisdell - Lillian Willins - 1978 EAC Sale, lot 107 - Lillian Willins - 1981 EAC Sale, lot 388 - Denis W. Loring - Bruce Reinoehl - 1992 EAC Sale, lot 145 - Dr. Willard J. Carmel, Jr.*



289. 1802 NC-1 R5+ AG3. A smooth low grade and easily attributable example. Glossy chocolate brown with darker olive in the protected areas. Aside from a patch of possibly removable crud built up at the lower left reverse, there are no real issues to report. The small spike down from the bust after the date which clinches the attribution is very plain. EDS, Breen I. *Ex 2010 EAC Sale, lot 272 - Bill Gape.*



292. 1803 S-253 R2 VF30. Small Date & Fraction. A bold XF cent with dark olive brown surfaces and just a dusting of light verdigris in a few places and some minute roughness in the fields. Nice eye appeal though, especially at arm's length. No marks. Sharply struck MDS, Breen III. *Ex 2012 EAC Sale, lot 230.*



290. 1803 S-248 R4 VG10. Small Date & Fraction. Glossy medium brown surfaces, a nice example for the grade of this scarce "mumps" obverse variety. A nick at the center of the reverse is the only minor flaw to point out. EDS, Breen I. *Ex Del Bland 5/27/1970 - Jules Reiver - Walter Mustain - Kevin Vinton 6/20/2016 - Gary Smith.*



293. 1803 S-261 R2 VG10. Small Date, Large Fraction. Glossy chocolate brown surfaces. Nice for the grade, just slightly rough in texture due to myriad tiny contact marks. No corrosion though. Later die state with swelling at the lower hair curls. *Ex Terry Denman.*



291. 1803 S-250 R3 F15. Small Date & Fraction. Pleasing, original light brown surfaces with just a few tiny scratches on each side. Not far from VF in terms of detail. LDS, the peripheral detail is being drawn into the rims. *Ex Jim Long 5/10/2004 - John Pijewski, Superior 5/2005, lot 1440 - Phil Moore.*



294. 1803 S-263 R3 VF25. Small Date & Fraction. A sharp, attractive cent with detail 10 points sharper than the assigned grade. Deduction for having been very lightly burnished, but it was done carefully, the color is a decent medium brown, and there are no major marks or other flaws. EDS, Breen I. Accompanied by an old W.C. Blaisdell envelope.

Well-Detailed 1803 NC-1



295. 1803 S-264 R4+ FR2. Large Date, Small Fraction. A famous rarity and always in extremely high demand as a key *Red Book* variety. This piece shows G5 or so detail but was probably sharper than that when it was lost to the ground. Even granularity on dark olive surfaces, no marks or other damage to note. The large date is clear, only part of the fraction is visible, but the diagnostic die break and swelling is plain. *Ex Bill Gape.*



296. 1803 S-264 R4+ BS1. Large Date, Small Fraction. If you missed out on the last lot, here's another chance! AG-G detail but both sides are covered with old scratches and the rims are pretty beat up. Most of the large date can be made out, the fraction only partially visible but the characteristic reverse die break and swelling are obvious. Won't win any beauty contests but will fill a hole for many. *Ex Henry Hettger - 2016 EAC Sale, lot 285.*



297. 1803 S-265 R4 F15. Large Date & Fraction. Sharp VF30 detail, an impressive S-265 despite some surface issues. The obverse has scratches in the left obverse field and the hair, as well as a few nicks and minor porosity in portions of the fields. The reverse has fewer marks but slightly more pervasive microporosity. The positives are the very sharp detail and attractive light golden-olive color. E-MDS, Breen II.

298. 1803 NC-1 R5+ VG10. Small Date & Fraction. A thoroughly decent and better than normally seen example of this NC variety, one that's rare in a general sense but relatively available as far as NCs go. VF detail and the color is an acceptable dark chocolate brown and steel. The deduction in grade is for some obverse scratches in the right field and Liberty's upper hair, as well as trace roughness on each side. Definitely ranks in the top half of survivors in terms of grade. MDS, Breen II. In an NGC VF details holder. *Ex Heritage 5/2008, lot 1793 - 2009 EAC Sale, lot 187 - Bill Gape.*

299. Trio of Early Date Die Varieties. Includes 1803 S-243 R2 Stemless Wreath, VG7 net G5 for light granularity; 1803 S-247 R4 F12 net G6 for roughness, rare LDS, Brecn III; and 1807 S-275 R3 G5 net G4 for minor roughness. Lot of 3 coins.



300. 1804 S-266a R4 G4. A decent example for the grade of this famous key date. Detail near G6 and the date and almost all of the legends are bold. Dark olive brown and steel surfaces that are matte in texture due to very light microporosity throughout. One dig at the fraction but otherwise free of damage. Respectable overall and is not devoid of eye appeal. In an NCS VG details holder.



301. 1805 S-267 R1 XF40. An attractive, high grade 1805. Close to AU in terms of detail and surface preservation. There is only light wear on the highpoints and subtle mint frost remaining in the fields. It's clear this cent was lightly cleaned and recolored, but the toning is an acceptable olive brown with traces of ruddy orange. Very few marks, there are a few light scratches on the Liberty's cheek that bear mention, but otherwise the surfaces are quite clean. M-LDS, Brecn III. *Ex Bill Gape.*



302. 1806 S-270 R1 VG10. Fine detail and fairly smooth olive brown surfaces. Some minor roughness in the fields and there is an almost imperceptibly light bend to the planchet - hardly worth mentioning. Strong, even detail for the grade and overall a decent example of this better date.



304. 1807 S-271 R1 VG8. Comet. Glossy deep olive brown surfaces that show no consequential marks or roughness. Nice eye appeal for the grade despite having been cleaned and recolored. Fairly late die state with a strong "Comet" break and several obverse die injuries running parallel to it.



303. 1807 S-271 R1 VF25. Comet. If we could ignore a few problems, this would be a beautiful AU S-271 with perfect tan brown color and frosty cartwheel luster in the fields on each side. Unfortunately there are some rather severe marks that need to be pointed out - a scrape on Liberty's upper hair, deep reverse cut at IC in AMERICA which shows some fresh orange copper, and some nicks left of CENT. In addition, there is a dusting of maroon roughness at the right obverse border and to a great extent, the upper reverse. Despite the problems, this coin has considerable appeal and is a great representative of an advanced die state of the popular "Comet" obverse. *Ex Bill Gape.*



305. 1807/6 S-272 R4+ AG3. Small Overdate. An elusive variety, quite scarce as a Sheldon number, but the supply/demand situation is strained more than normal due to this being the only die variety representing the Small Overdate *Red Book* variety. This is a uniformly granular steel brown example with G4 detail and a nice clear date. Very slight bend to the planchet but no major marks or damage. Certainly decent for one of these - they can come a lot worse. *Ex Bill Gape.*



306. 1807/6 S-272 R4+ AG3. Small Overdate. Remarkably, another example of this rarity, again in an accessible grade and price point. This one's sharper, the definition in places approaching Fine, but rougher in appearance with granularity throughout and scaliness on the obverse. Scratches on the portrait as well. The good news is the all-important small overdate is clear. In an NGC VG details holder.



307. 1807/6 S-273 R1 F12. Large Overdate. F15 detail and attractive light olive and steel brown color. The surfaces glossy and free from roughness, there are just a few thin scratches in the left obverse field and a tiny nick by the eye. LDS, Breen IV.



310. 1809 S-280 R2 VG10+. A strong example for the grade of this key date Turban Head. Desirable early die state where all of the peripheral detail including the date was crisp and unaffected by die wear. Glossy medium brown surfaces with no consequential marks or roughness. Some reddish undertones to the color suggest this cent was recolored, but if so it was done with great skill and the finished product is very attractive and natural looking.



308. 1807 S-274 R2 VG7. Small Fraction. Far scarcer than its Large Fraction counterpart and represented by just this one die variety. Sharpness a bit higher in the VG range and the surfaces are a reasonably smooth steel brown, but there are some light hairlines on both sides, slightly heavier across the obverse.



309. 1808 S-277 R2 F12. VF detail and nice medium brown color. The obverse is rather dull from microporosity while the reverse is smoother with just a little roughness at its lower border. Only minor marks, a few obverse scratches and ticks of which none are serious. Intermediate die state.



312. 1810 S-283 R2 VF25. Another sharp 1810 with similar XF45 detail. The obverse shows signs of having been carefully smoothed in the fields and on the portrait to minimize roughness and/or verdigris. A bit of very faint microporosity remains in a few places but the surfaces are generally smooth and slightly glossy. Recolored to olive brown with some red undertones. Despite the problems, this is a worthwhile piece given the sharp detail and decent arm's length appearance. In a PCGS AU details holder.



311. 1810 S-282 R2 VF30. Sharpness of XF45 and there is frosty flowline luster on each side, especially on the reverse. No marks or roughness that immediately jumps out, but upon careful inspection there are two small areas of tooling - one below the date and another below the reverse wreath's bow. The color is an attractive medium brown and steel and this cent offers a lot of eye appeal for the grade. M-LDS, Breen IV. *Ex Bill Gape.*



314. 1811/0 S-286 R3 VG7. A decent looking two-tone piece with VG10 detail but a little bit of underlying granularity to the surfaces. 3 or 4 little nicks on each side, but nothing too severe. Very bold overdate detail.



313. 1811/0 S-286 R3 VF20. An exceptionally well detailed example of this challenging and interesting overdate variety. Strong XF sharpness but there are scattered patches of roughness and some spots of verdigris on the reverse. There are a handful of short scratches on the reverse as well. Toning a mixture of medium brown and olive. *Ex Bill Gape.*

Sharp 1812 S-288



316. 1814 S-294 R1 F12. Crosslet 4. Attractive surfaces that are dark brown with tan highpoints. Trace of roughness in the fields, but no marks and overall very solid eye appeal for the grade. *Ex Terry Denman.*



315. 1812 S-288 R2 XF40. Sharp AU50 detail, the definition especially impressive thanks to the fairly early die state. Slightly lustrous medium olive and steel brown surfaces that have no trace of roughness but a few reverse scratches that account for the net grade. A few minor marks on the obverse as well including a nick under the chin. Excellent quality overall despite the minor issues and easily deserving of an XF grade and value. *Ex Bill Gape.*



317. 1814 S-295 R1 XF45. Plain 4. An extremely bold piece that was sharply struck from an early state of the dies. Solid AU50 detail and in terms of marks and roughness, the surfaces are virtually flawless. Slight deduction for being lightly cleaned and nicely recolored to a dark olive brown. Despite that, there are traces of luster in the fields and the coin is glossy and slightly reflective. Impressive eye appeal overall. *Ex Bill Gape.*

318. 1814 S-295 R1 VF30. Plain 4. Glossy chocolate brown and light steel. A very choice cent for the grade with no marks or roughness. One of the latest die states of this variety with flowlined surfaces, crumbling under Liberty's chin and a rim break over the D in UNITED. *Ex CVM 6/6/2001 - Terry Denman.*

319. Pair of Classic Head Cents. Includes 1810 S-284 R3 AG3, smooth steel brown. Together with 1812 S-289 R1 G5, smooth steel brown, minor scratches in fields. Lot of 2 coins.

Lovely 1816 N-4



320. 1816 N-1 R4 VF20. Pleasing quality and strong detail for this tough variety. Sharpness close to VF30 and the surfaces are mostly glossy light olive brown and golden-tan. Hardly any marks, but there are many tiny pits scattered across each side. They are small enough so as to not give the coin too rough of an appearance. E-MDS with rim crumbling at stars 8-10. *Ex CVMFPL 11/1995 - Jack Wadlington.*



321. 1816 N-2 R1 AU50. Sharpness close to mint state and there is luster in the fields and traces of mint red surrounding some of the details. It appears the coin was rather aggressively brushed at some point and there are light hairlines on both sides, but they are pretty minor and this remains a sharp and attractive example of the date. *Ex Bill Gape.*



322. 1816 N-3 R4 VF20. A nicely detailed example of probably the scarcest variety of the date, slightly tougher than N-1 on our opinion. This piece has VF30 detail but rather dark color, minor roughness/verdigris on the reverse, and a few marks - a scratch off Liberty's mouth the most notable. A majority of the surface though is glossy dark olive with steel devices. MDS.

323. 1816 N-4 R2 AU55. A beautiful cent, essentially mint state and has the luster and eye appeal of that level. Frosty steel brown with blue overtones and warm copper-orange surrounding the devices. The toning implies a long ago light cleaning and there are perhaps a few very faint hairlines visible in the fields, but they are extremely minor, do not affect the luster, and this remains a choice cent. No contact marks. A late die state with flowlined surfaces. *Ex Mid-American Rare Coin Auctions 9/8/1990, lot 267 - CVM FPL #63 9/15/1999 - Jack Wadlington, Stack's Bowers 3/2016, lot 10004.*

Choice 1816 N-8, ex Naftzger



324. 1816 N-4 R2 VF25. Sharpness near AU but there is light porosity affecting about half of the surface, somewhat more pervasive on the reverse than the obverse. Very dark olive brown, the surfaces frosty where uncorroded. No marks to report. Similar late die state to the preceding lot.



325. 1816 N-7 R3 VF35. An appealing piece, the surfaces glossy, problem-free, and the toning a natural mixture of tan and dark chocolate. A few tiny spots of verdigris are noted on either side of the portrait and between UNITED STATES. Has an interesting look due to its flat rims - the most likely explanation for which is that this coin was struck on a "type 1" planchet, i.e. before the rims were upset. MDS.



326. 1816 N-8 R3 AU55. Very pretty chocolate brown surfaces that are frosty and have good cartwheel luster on both sides. No marks or spots of any consequence - a really choice cent with just a trace of highpoint wear. Middle die state with rim breaks at 9-10 and 11-12. In a PCGS MS63BN holder. Ex Bob Shalowitz 7/10/1981 - C. Douglas Smith 3/1982 - Ted Naftzger, Goldberg's 2/1/2009, lot 15 - CVM 4/2013 - Terry Denman.



327. 1816 N-8 R3 XF45. Another nice example of the variety and die state. This one with frosty chocolate brown surfaces and some medium brown mixed in, the combination a bit splotchy on the obverse, but still natural and attractive. Cartwheel frost in the fields on each side. There are few tiny scratches and carbon spots to be found with a glass, but they are all minor. Planchet delamination on the reverse rim at 2 o'clock.



330. 1817 N-11 R1 VF35. Choice chocolate brown surfaces with golden tan undertones and mint frost through the peripheral detail. Totally ideal with no problems to note. E-MDS, the fields beginning to flowline. Worn just barely past the point of XF, but the eye appeal and probably the value is all there for that higher level. *Ex Bowers & Merena 1/5/1995, lot 2325.*



328. 1817 N-1 R4 F12+. An excellent quality example for the grade. Glossy medium brown surfaces with just a few minor marks, nothing out of line for a Fine. MDS.



329. 1817 N-7 R3 VF20. A well detailed, medium brown example of this popular variety and "mouse" break die state. Sharpness a bit higher in the VF range, but there is a dusting of very light verdigris around some of the details and a few marks within the reverse wreath. Surfaces predominantly hard, but a bit dull - after all, this coin has been sitting in a slab for close to 30 years. I suspect a proper brushing will bring some gloss and life back to this cent. In an old ANACS EF40 holder.



332. 1817 N-14 R1 MS60. Likely another member of the Randall Hoard family. This piece shows no wear and has a good amount of cartwheel luster on each side. The toning is a mottled mix of several shades - rather unusual, but doesn't appear to have been cleaned and the surfaces retain their fresh, frosty texture. Some original red is even still present on the obverse. Slightly later die state than the preceding lot, but not the latest seen.



331. 1817 N-14 R1 AU55. A really pretty one of these with distinctive golden tan and steel brown toning. Cartwheel luster on each side and has a nice high grade gloss to the surfaces. A few marks, most notably behind Liberty's eye and inside star 11, though neither are too disturbing. MDS, the dies not quite as worn as often seen. Probably a Randall Hoard coin that picked up a bit of "cabinet friction."



333.

1817 N-17 R4 F15. A solid example of this tough variety. VF detail with just a bit of microporosity in the fields. Nothing much in the way of marks or other damage. Slightly glossy dark olive brown with lighter steel devices. Attractive despite the minor roughness. MDS.



334. Complete Set of 4 "Mouse on Head" 1817 Die Varieties in Custom Capital Holder. An excellent presentation for this neat subset of 1817 cents, featuring all 4 varieties that developed those infamous "mouse" breaks atop Liberty's head. The coins are 1817 N-3 R2 G5, 1817 N-7 R3 VG10, 1817 N-8 R2 F12, and 1817 N-9 R2 F12. All are nice, problem-free pieces. Ex Larry Knee.



335. 1818 N-2 R4 G4. A point or two sharper with just lightly rough dark olive and steel surfaces. Clear date and legends. M-LDS, the reverse cud is fully broken out over NI, but still retained over TED.



338. 1819/8 N-1 R1 XF40. Overdate. A very sharp example of this overdate that's barely worn and struck from an early state of the dies. There are subtle signs of smoothing in the fields and on the devices, the purpose for which is unclear as there isn't any real roughness or likelihood of verdigris to be removed, but you never know. Recolored to an even dark olive. Decent arms length eye appeal despite the issues and has impressive definition.



336. 1818 N-7 R1 AU50+. A lovely cent with frosty tan brown surfaces. There are a few trivial marks and spots, but this coin easily qualifies as "choice." Significant cartwheel frost on each side and just a trace of rub on the highpoints. M-LDS. A previous owner's envelope for this coin states: "This coin was my excuse to help me quit smoking. At a pack a day only took 2 months to pay for." The power of early copper! *Ex Doug Bird 10/6/1985 - Wes Rasmussen, Heritage 1/15/2005, lot 3412 - Rod Burress 3/14/2005 - C. Taylor.*



339. 1819/(8) N-2 R1 VF35. Large Date. Frosty chocolate and tan brown. A nice cent and would grade XF if not for lots of little hairlines on Liberty's cheek. Otherwise free of notable marks. M-LDS with die rust and flowlines. *Ex Bill Gape.*



337. 1818 N-7 R1 VF30. 5 points sharper but there are just a few too many contact marks on the obverse and the color suggests this cent was cleaned and recolored. Still a sharp and decent looking coin. MDS. *Ex Dennis Fuoss. A donated lot, all proceeds to EAC.*



340. 1819 N-4 R3 VG10. Small Date, Close Stars. Smooth, glossy medium brown and steel. Exceptional quality for the grade without any notable marks. E-MDS.



342. 1820/19 N-1 R1 XF40. Large Overdate. An attractively sharp example of this overdate with especially crisp detail thanks to the early die state. Dark olive color with tan on some of the highpoints. There are some reddish-brown undertones and this cent may have been recolored, but the appearance is quite natural and pleasing. The only marks seen are trivial. A common variety but very popular and rather scarce in XF and higher. *Ex Bill Gape.*



343. 1820 N-5 R3 XF45. Small Date. A better variety and quite scarce at this grade level and higher. This is a sharp example with AU detail and mark-free surfaces. Mostly retoned to medium brown from an old cleaning, but some orange color does remain in the protected areas. Very early die state with no trace of flowlines in the fields. In a PCGS AU55 holder. *Ex Rod Burress 10/2008 - Tom Reynolds - Terry Denman.*

341. 1819 N-8 R1 AU55. Small Date. Lustrous golden tan and steel surfaces. Likely from the Randall Hoard, this cent clearly didn't circulate and despite minor scruffiness in the fields, this would qualify as a 60 coin if not for a few marks in the left obverse field and above Liberty's eye. LDS, both sides flowlined which weakens the peripheral detail some, but amplifies the luster. *Ex Bill Gape.*



344. 1820 N-5 R3 G4. Tab Double Strike. Small Date. A rather significant mint error for the type with a good-sized "tab" from a 95% off center second strike. On that strike, the reverse received a second impression of the die while the obverse was struck against a new planchet. Fine or so detail, but rough from ground burial and has a dark olive and green patina.



345. 1820 N-6 R4 VF30. Small Date. A pleasing original cent with split toning - light golden tan at the lower right obverse and upper right reverse and deeper chocolate brown on the other half of the coin. A few contact marks including some concentrated on and around Liberty's neck. Trace of mint frost at the peripheries. Great quality and eye appeal overall for this challenging variety.

Lustrous AU 1820 N-7



346. 1820 N-7 R3 AU50. Small Date. Frosty deep brown surfaces with strong cartwheel luster on both sides. There are a few minor marks on the obverse including a thin scratch across the portrait into the left obverse field and a small nick right of star 6. The reverse is choice and the overall sharpness and luster is more like that of a 55 coin. A significant example of this better variety and almost certainly a condition census coin, indeed, this is CC#3 in Noyes' list and CC#2 in Bland's. *Ex Seaby Coins (London) 1946 - Willard C. Blaisdell 9/1976 - Del Bland 9/1976 - Ted Naftzger, Goldberg's 2/1/2008, lot 94 - CVM 8/2009 - Terry Demman.*



347. 1820 N-8 R3 XF45. Small Date. A sharp and attractive cent, close to AU and there are traces of frosty luster lingering in the peripheral detail. Interesting greenish-olive and tan color, probably the result of having retoned from an old cleaning, but pleasing and there are no hairlines. Hardly any marks, exceptional quality in that regard. A noteworthy example of a variety that isn't too common in high grade. E-MDS.



348. 1820 N-10 R2 MS60. Large Date. Among the non-Randall Hoard varieties, this is one of the more available in high grade, but by no means common in the mint state condition offered here. Lustrous chocolate brown with mint red outlining much of the obverse detail. Very nice surfaces, there are just a few tiny contact marks at the lower left obverse and some spots of darker red toning on the reverse. Tiny planchet clip outside star 5. EDS. *Ex Vern Lowe - Stu Hudge, 2004 EAC Sale, lot 376 - Dan Holmes, Goldberg's 5/30/2009, lot 140 - Terry Denman.*



349. 1820 N-13 R1 MS62. Large Date. A lovely and original Randall Hoard 1820 N-13. Lustrous surfaces that have a thick, frosty skin. The obverse just slightly toned down to steely chocolate brown and some mint red shines through around some of the details. The reverse has a thin crescent of light chocolate color and is predominantly deeper olive brown representing where there was probably another coin sitting against this one for many decades. Excellent eye appeal.



352. 1821 N-2 R1 F15. Sharpness of VF25 or maybe better, but the surfaces were smoothed, more heavily so on the obverse and on the reverse there is a trace of porosity remaining in the fields. Nicely recolored to a pleasing light olive. Dig above T in CENT.



350. 1820 N-13 R1 MS60+. Large Date. Another excellent example. Deep brown surfaces with frosty cartwheel luster and a rather glossy texture. Traces of mint red around some of the obverse detail and to a greater extent at the central reverse. No marks or spots to report.



353. 1821 N-2 R1 F12. Similar VF25 detail and this piece was also lightly smoothed. The surfaces are still a tad granular, but not too bad and there are no marks. Dark olive and steel.



351. 1820 N-13 R1 AU55. Large Date. A third and final high grade example of the variety. This one unworn and attractive, though rather dark in color and a bit "cleany" in texture on the obverse. No contact marks of any consequence and overall pleasing eye appeal. *Ex Bill Gape.*



354. 1822 N-11 R2 AU50. Beautiful, original surfaces. Mostly golden-tan with some darker toning on the high-points and in the right obverse field. Soft luster covers the fields on both sides and there are no marks that distract the eye. One carbon spot off the coronet tip is the only thing to note. MDS, some die rust is seen on the portrait and at the borders.



355. 1822 N-13 R5 VG8. The second rarest die variety of the date for which VG is a respectable grade. This example has glossy dark olive and steel surfaces. VG10 detail with a few small rim nicks on each side. Noyes photo #25349. Ex Bob Matthews 5/28/1989, lot 622 - Dan Holmes 6/2003 - CVM - Terry Denman.



356. 1822 N-13 R5 AG3. A more typical low grade example, but still a clear representative of the variety. G detail with granular, lightly smoothed surfaces. The date and most of the legends are visible, and the attribution points are plain.



357. 1823/2 N-1 R2 F15. Overdate. Glossy medium brown surfaces. A nice mid-grade example of this key date with close to VF detail and just some light nicks from circulation. One little divot near star 9 should be noted. Bold overdate detail. Ex Bill Gape.



358. 1823/2 N-1 R2 F12. Overdate. Sharpness on the better side of VF20 but there is some light porosity in the fields and a small patch of raised corrosion at TE in UNITED. No marks that need reporting. Glossy steel brown and dark olive.



361. 1824/2 N-1 R1 VF30. Overdate. Sharp AU detail and struck from an early state of the dies which allows for full appreciation of all the fine detail of the overdate. Glossy and slightly reflective dark olive brown, clearly cleaned and recolored but still decent looking. The surfaces are mostly hard but there are traces of fine porosity and tiny specks of raised reddish corrosion around some of the detail. A meaty example of this popular overdate, worthy of consideration despite the imperfections.



359. 1823 N-2 R2 F12+. A strong F15 coin detail-wise and has a fairly pleasing overall appearance. Slight deduction for some traces of minor roughness in the fields. Mostly smooth and slightly glossy chocolate brown and only a few minor marks. MDS. *Ex Bill Gape.*



362. 1824/2 N-1 R1 VG10. Overdate. Glossy chocolate brown, a very pleasing example for the grade. There are a couple minor rim bumps, one notable one over in A in STATES, but otherwise the fields and devices are quite nice and show far fewer marks than you'd expect for the grade. MDS.



360. 1823 N-2 R2 VG8. Reasonably smooth dark brown surfaces with lighter chocolate highpoints. No marks of any consequence, though a glass reveals a little microporosity in the fields. Slightly later die state than the preceding example, this one with a few more dentils fused past star 5.



363. 1824/2 N-5 R4 VG8. Overdate. A nice lower grade example of the rare overdate variety. Glossy steel brown and light olive. Some minor contact marks on the fields and a few rim bumps, but nothing too egregious for the grade. MDS. *Ex Joe Dooley, M&G 1/1997, lot 324 - Ray Baker; Superior 2/8/1999, lot 2213 - Terry Denman.*



365. 1825 N-1 R4 F15+. Attractive chocolate and steel brown surfaces. A pleasing, original example with only minor marks - a small scratch inside star 13 is the only thing to mention. MDS. *Ex Goldberg's 2/10/2008, lot 1464 - Phil Moore.*



366. 1825 N-6 R3 VF20. VF35 detail but lightly cleaned and there are hairlines on both sides. Decent color though, medium brown and steel. The surfaces are generally hard and glossy, the reverse a bit rough in appearance due to a combination of die rust and trace porosity. LDS.



367. 1825 N-8 R3 VF30+. An attractive and problem-free cent with glossy medium olive brown surfaces that show some darker olive and maroon undertones. Strong, well-struck detail from an intermediate state of the dies. No marks to report. In an NGC AU55 holder. *Ex George Rariont 12/1972 - Jules Reiver Heritage 1/2006, lot 19851.*



364. 1825 N-1 R4 VF30. Sharpness of XF40, this is a significantly sharp example of the variety and fairly pleasing despite some minor issues. The surfaces are glossy dark olive with chocolate on the highpoints. Trace roughness in the fields, clearest at the upper obverse, but very light overall. Nick on Liberty's nose and shallow scrapes at the mouth and neck. Otherwise nicely free of marks. Traces of mint frost at the obverse peripheries. MDS with a die crack through the bottom of the date and no rim cuds.



369. 1826 N-4 R2 VF35. A notably late die state example with flowlined surfaces and weak peripheral detail. Glossy medium brown with some tan undertones. Trace of frostiness through the stars and legends. A few tiny toning spots on the obverse and microscopic abrasions within the wreath are the only very minor flaws. A nice cent. In an NGC AU58 holder. *Ex Mason-Dixon 10/1956, lot 439 - Carter - Del Bland 4/24/1970 - Jules Reiver; Heritage 1/2006, lot 19862 - Shawn Yancey 3/2012 - Terry Denman.*



370. 1826 N-7 R1 VF25. Sharpness close to VF35 and this cent has a pleasing look despite light porosity in the fields. Dark brown color with lighter tan on the highpoints. No distracting marks. An early die state with bold clash-marks on the reverse and no cracks or rim crumbling.

368. 1826 N-3 R3 XF45. Choice chocolate brown with frosty tan toning in the protected areas. A great coin and textbook example of an EAC choice XF. There are a few trivial contact marks on the obverse while the reverse is just about flawless. MDS showing some dentil fusing above stars 6-8. Removed from an old PCGS AU53 holder and the label is included. *Ex Superior 9/1999, lot 478 - Phil Moore.*



371. 1827 N-6 R3 XF45. A lustrous 55 coin, really not far from mint state, but there are two small patches of tooling above the portrait where someone probably had the ill-advised idea to remove some minor carbon spots. Light scratches and artificial orange there but it's a pretty small area and doesn't stand out too terribly. Otherwise beautiful light steely olive surfaces with traces of real mint red in a few places. Scattered tiny carbon spots, but no notable marks. M-LDS, cracked through all of the obverse stars.



372. 1827 N-8 R3 VF25. A strong 30 coin and mostly problem-free, the color is just on the dark side and there is a bit of microgranularity in the fields. Glossy and has decent eye appeal. M-LDS. *Ex Rod Burress - John Pijewski.*



375. 1827 N-11 R1 VF25. Glossy medium brown with a bit of tan toning on the highest points of the coin. Very nice surface quality and eye appeal. A few tiny rim ticks at the lower obverse are the only marks to note. LDS. In an old ANACS XF40 holder. *Ex Bill Gape.*



373. 1827 N-9 R3 VF30+. A choice, mid-grade example. Excellent medium brown color with a few streaks of tan undertone. Totally original surfaces and a bit of frostiness in the fields. Only tiny contact marks and a few extremely minor rim disturbances - you have to really look for them. MDS. *Ex Doug Bird.*



376. 1828 N-2 R2 VF35. Lovely tan color and strong detail, not too far from XF. There is an old nick behind Liberty's eye and a few splashes of darker toning on each side, but really nothing that could be considered a "problem." Glossy surfaces. An appealing coin. E-MDS. In an NGC AU55 holder. *Ex Terry Denman.*



374. 1827 N-10 R4+ VG8. A respectable grade for this scarce variety and the quality is excellent for that grade. Glossy dark chocolate brown with steel devices. Just a few minor marks to note - a fine scratch under star 1 and nick at the second T in STATES. *Ex Bill Gape.*



377. 1828 N-4 R4 F15. An excellent example in very decent grade for this variety - the finest known specimens barely make XF. VF20 detail and pleasing light brown surfaces. There are just a few fine scratches on the portrait and central reverse. MDS. *Ex CVM 4/14/2012 - Terry Denman.*



378. 1828 N-6 R1 VF35+. A sharp example, very close to XF. Mottled mix of steel and tan toning. There are some tiny abrasions on each side but none that need to be singled out. LDS with die cracks at stars 6 and 9.



379. 1828 N-8 R3 VF30. A solid mid-grade example of this better variety and difficult to find in better VF grades and higher. 5 points sharper but there are a few obverse marks including a thin scratch across the portrait. Pleasing, original surfaces, dark chocolate and steel in color. EDS without the reverse die crack through TED. *Ex Bill Gape.*



380. 1828 N-9 R4 VF30. Sharp VF35 detail but lightly cleaned, the obverse retoned to a light olive and tan with colorful iridescence, the reverse more of an even tan with reddish patina around some of the detail. Quite strong for this scarce variety. Fairly early die state. *Ex Bill Tivol.*



381. 1829 N-3 R3 VF35+. Small Letters. Frosty chocolate brown and steel. Not much wear, but has a typical blunt strike with soft detail on the upper hair, stars, and reverse wreath. Excellent surface quality though and the fields have the luster of a 45 or 50 coin. Choice obverse and one lone hairline scratch above CENT on the reverse. Noyes photo #58470. In an NGC XF40 holder. *Ex CVM 4/2013 - Terry Demman.*



382. 1829 N-3 R3 VG7. Small Letters. Glossy dark chocolate brown with steel devices. Problem-free, very nice for the grade.



385. 1830 N-11 R5 VG10. Large Letters. A legitimately rare variety and this is a much better than normally seen example. F12 detail, fairly pleasing color that's medium olive brown in the fields and lighter steel on the devices. Just a tad granular in the fields and lightly cleaned, but there are no other marks or damage and the eye appeal is strong for one of these.



383. 1829 N-8 R1 VF30. Large Letters. A very bold cent thanks to a combination of being very sharply struck from an early state of the dies, and only being lightly worn. At least AU50 detail but there is some light porosity in the fields, mostly on the obverse, and there may have been some smoothing done as the toning suggests recoloring. No marks at all.



384. 1830 N-1 R1 VF20. Struck Off Center. Large Letters. Struck about 5% off center to 6 o'clock, not way off but enough to be considered a mint error. Sharpness VF35 but the surfaces are dark and have some light roughness in the fields and verdigris built up around some of the details.



386. 1831 N-10 R3 VF35. Large Letters. Lovely light brown color and frosty fields. Just about XF and very appealing, held back just slightly by a few obverse toning spots and nicks on the chin. M-LDS with dentil fusing over star 9 and an arcing reverse die crack at STATES. *Ex John Wright - Thomas Chalkley, Superior 1/1990 - Phil Moore.*



387. 1831, 1832 Two-Headed Novelty Cent. I've seen a handful of these "magician's coins" made from large cents, but this is by far the best made and most attractive I've encountered. The maker selected two perfectly matched, medium brown choice VF coins, an 1831 N-1 and 1832 N-1. Thin seam of solder around the edge. Pretty cool!



388. 1834 N-1 R1 VF35. Small 8, Large Stars, Medium Letters. XF40 but lightly cleaned light olive and tan brown. No marks of any consequence. Traces of frosty luster near the rims. Removed from a PCI AU58 holder and the label is included.



389. 1834 N-2 R1 XF40. Small 8, Large Stars, Medium Letters. A sharp, slightly lustrous piece, close to AU but there are a few little scratches in the left obverse field and a streak of roughness right of the date. Medium steel brown with brick red patina at the obverse peripheries and over much of the reverse, that side a bit dull to the patination, but there is no real roughness.



390. 1834 N-5 R4 VG8. Large 8, Large Stars, Medium Letters. The rarest of the 3 major *Red Book* varieties for the date and always in high demand. This piece has decent chocolate brown and steel surfaces and VG10 detail. There are a few minor marks and patch of roughness below the wreath. *Ex Bill Tivol.*



391. 1835 N-2 R3 XF40. Small 8, Stars. First in an excellent run of 1835 varieties and die states. This is a strong example of this rather scarce variety. Solid detail, close to XF45 sharpness-wise and the obverse is choice, there is just a light dusting of darker toning spots on the reverse. Some of these spots are just light toning, others are raised carbon, but they all are tiny and blend into the toning at arms length. Otherwise glossy medium brown surfaces with nice eye appeal. MDS.

Terminal Die State 1835 N-4

Choice 1835 N-9, ex Hines-Sheldon-Starr



392. 1835 N-4 R4+ G5. Small 8, Stars. An impressive and rare die state featuring one of the largest cuds in the middle date series. Despite the lower grade, the cud is represented very nicely here. Decent olive and steel surfaces with just some minor roughness and marks - not too bad for the grade. *Ex Rod Burress.*



393. 1835 N-5 R2 XF40. Small 8, Stars. Frosty light brown surfaces, a pretty 45 coin with just a little bit of microporosity around the left obverse border. Only a few tiny marks and overall nice eye appeal. M-LDS. *Ex Bill Gape.*



394. 1835 N-9 R4 VF35. Large 8, Stars. An incredibly choice, just about perfect cent for the grade that would be notable for its pleasing appearance even it weren't a rare variety. But that it is, and is almost certainly among the best 6 known. Light chocolate brown with subtle woodgrain toning of lighter tan and medium brown. No flaws worth mentioning. E-MDS, with a light die crack through AMERICA. A desirable coin that combines rarity, eye appeal, and provenance. Noyes photo #25637 and CC#5 in his list. *Ex Burdette G. Johnson 1925 - Henry C. Hines - William H. Sheldon - Floyd T. Starr, Stack's 6/1984, lot 304 - Wes Rasmussen, Heritage 1/2005, lot 3647 (where certified NGC AU58) - Fred Borchardt - Terry Denman.*



395. 1835 N-9 R4 VG8. Large 8, Stars. Glossy medium brown surfaces, decent overall quality for the grade with just a few light scratches in the right obverse field and trace of roughness around the reverse detail. Respectable for the variety. E-MDS. *Ex Bill Gape.*

1835 N-10, Wright Plate Coin



396. 1835 N-10 R4+ VF20. Small 8, Stars. An excellent example of this variety which is, in our opinion, the third rarest of the date behind N-18 and 19. Pleasing chocolate brown and steel surfaces, there is some light, streaky roughness in the reverse fields, but it was clearly obtained very early on and was perhaps natural to the planchet. The nice patina is unaffected by it. No marks of any importance and if not for the reverse texture, this would be closer to a 30 coin. E-MDS with fairly light die cracks. Up there in the condition census, Noyes photo #28422 and tied for CC#7 in his list. *Ex Lewis O. Goodman, New Netherlands 9/26/1967, lot 197 - Robinson S. Brown, Jr., Superior 9/30/1986, lot 787 - J.R. Frankenfield, Superior 2/17/2001, lot 1092 - Dan Holmes, Goldberg's 5/30/2010, lot 426 - CVM 12/17/2010 - Terry Denman.*



397. 1835 N-12 R4 VG10. Small 8, Stars. A rare die state with a cud break over stars 9 and 10. Perhaps a dozen or so are known. F15 detail with lightly porous reddish steel brown surfaces. Rim nick at star 4 and a fresh scratch before STATES are the only marks to report.



398. 1835 N-18 R4+ G6. Small 8, Stars. Only a 6 coin, but still above average for this tough variety which seems to always come very rough and very worn. This one's nice for the grade with glossy light brown surfaces - a tiny peck at the center of the reverse is the only mark that stands out.



399. 1835 N-19 R5 VG10. Head of '36. The key 1835 variety. Here is a very decent example and clear representation of this muling of dies. Sharpness of F15+, just barely microporous reddish steel brown surfaces and there are scratches under stars 7-9 and the lower reverse border. *Ex John Wright 9/16/1985 - Thomas S. Chalkley, Superior 1/28/1990, lot 788*



400. 1836 N-3 R1 VF30. Glossy medium and dark chocolate brown. A nice cent with only minor contact marks and a small spot of roughness under the second T in STATES. LDS, with the obverse cud over star 6.



401. 1836 N-6 R2 AU50. A lovely example of one of the so-called "Gobrecht Head" varieties featuring a distinctive head of Liberty with a wavy top to the hair used on N-6 and N-7. Slightly lustrous tan surfaces with some woodgrain toning on the reverse. Just a few minor marks, none individually notable. LDS with a cud at star 8. *Ex Bill Gape.*



402. 1837 N-5 R2 MS60. Small Letters. A beautiful mint state example of the only 1837 variety combining the Plain Hair Cords, "Head of '37" obverse with a Small Letters reverse. Lustrous dark olive brown with some colorful green, pink, and golden overtones. A few tiny abrasions inside star 4, but the surfaces in general are pristine. M-LDS with flowlined surfaces, which enhances the luster. In an NGC MS62BN holder. *Ex Doug Bird 4/2013 - Terry Denman.*

1837 N-11, ex Eliasberg



403. 1837 N-11 R1 AU55. Head of '38. A choice coin with very attractive toning - deep chocolate and olive brown in the fields and lighter steel on the devices creating a subtle cameo effect. No marks or spots, a nice amount of frosty luster, and just a bit of rub on the highpoints. E-MDS with clear repunching on the 1 of the date. In an NGC MS63BN holder. *Ex Frederic W. Geiss, B. Max Mehl 2/18/1947, lot 198 - Louis E. Eliasberg, Sr., Bowers & Merena 5/1996, lot 576 - Terry Denman.*



404. 1837 N-12 R3 AU50. Head of '38. Lovely surfaces, glossy, mark-free, and with frosty cartwheel luster on each side. Chocolate brown with some darker toning on part of the reverse. M-LDS. A choice example of the "Accessory E" variety. *Ex Robert Vail, Superior 9/7/1997, lot 566 - Phil Moore.*



405. 1837 N-14 R3 XF40. Medium Letters. Frosty light brown with some deeper brown toning on the obverse. An attractive cent for the grade with quite a bit of luster thanks to the flowlines. An easy 45 coin if not for several little nicks on the portrait. The Wright plate coin for the variety. MDS. *Ex Paul Saros 6/1982 - John Wright, 2009 EAC Sale, lot 371 - Goldberg's 9/2/2012, lot 677 - Terry Denman.*



406. 1837 N-17 R4 VF30. Medium Letters. An interesting example representing a very late die state of the variety. Strong rim crumbling on the obverse, heavy reverse die cracks, and a retained, internal cud between the die cracks at the end of the wreath stem. VF35 detail with a few marks on each side. Glossy dark brown with tan high points. *Ex Russell Wyatt, Superior 9/1985, lot 646 - Dennis Mendelson, Superior 9/30/1985, lot 541 - CVM - Dennis Mendelson, Superior 9/21/1998, lot 1636 - CVM - John Wright 3/14/1999 - Jack Wadlington, Stack's Bowers 11/2017, lot 5694.*

1838 N-8, ex Newcomb



407. 1837 N-17 R4 VF20. Medium Letters. Sharpness of VF30 or slightly better but each side is rather rough in texture due to myriad tiny nicks and some light pitting near the date. Glossy dark olive. E-MDS.



408. 1838 N-5 R1 AU55. Frosty steel brown and light olive. Good cartwheel luster on each side. No marks, just an area of darker toning above the date and tiny streaks of roughness at ED in UNITED. Later die state. In a PCGS MS63BN holder. *Ex Bill Gape.*



409. 1838 N-8 R1 MS60. A sharp mint state cent with fully lustrous surfaces and significant mint red on the reverse. Very glossy and slightly reflective due to a thin layer of lacquer or similar material covering all but a small area at stars 1-3 which has a more natural texture. Still very attractive and the coating is harmless. Superb surface quality, a few miniscule toning spots and tiny scratch through UN are the only things to nitpick. E-MDS. *Ex Howard R. Newcomb, J.C. Morgenthau 5/16/1945, lot 696 - Floyd T. Starr, Stack's 6/13/1984, lot 364 - Dan Holmes, Goldberg's 5/2010, lot 523 - Terry Denman.*



410. 1838 N-11 R2 AU55. Frosty light brown, a very pleasing cent with cartwheel luster on each side. A dark toning spot over Liberty's eye is the only minor flaw to point out. Close to mint state and there are even a few peeps of mint red on the reverse. M-LDS with lapped, flowlined surfaces (Newcomb's old N-13). Removed from an old PCGS MS63BN holder and the label is included. *Ex Superior 5/31/1992, lot 597 - Phil Moore.*



413. 1839/6 N-1 R3 VG8+. Overdate. Pleasing surfaces for the grade with light chocolate and steel brown color. All of the major detail is clear including a strong overdate. A scratch on the portrait is the only minor mark. Early die state.



411. 1838 N-15 R5 F12. A rare die variety and distinctive in appearance due to the combination of a brand new obverse die and very worn out reverse die. This is a decent example with close to VF detail and mottled steel and orangey-tan color. Lightly cleaned and there is a small X scratch under Liberty's eye. *Ex Bill Tivol.*



412. 1839/6 N-1 R3 VG10. Overdate. Solid Fine detail with some light obverse marks and a bit of roughness and verdigris in the reverse fields. Glossy deep reddish brown surfaces. Very bold overdate. Early die state. *Ex Bill Gape.*

Sharp Late Die State 1839/6



415. 1839 N-3 R1 VF35. Head of '38. Glossy pale steel brown and light olive surfaces with a subtle woodgrain toning pattern on the obverse. XF detail but a few spots of minor porosity, around stars 2-3 and the upper right reverse border. Probably very lightly cleaned as well, but pretty attractive nevertheless. LDS. *Ex Philip Van Cleave, Kagin's 2/1/1986, lot 5381 - Dick Punchard - CVM 4/14/2012 - Terry Denman.*



416. 1839 N-8 R1 VF30. Type of '40. Pleasant medium brown surfaces with no notable problems. The obverse toning on the steel side while the reverse is a richer chocolate. A nice mid-grade example of this popular variety. MDS. In an NGC XF45 holder.

414. 1839/6 N-1 R3 VF20. Overdate. An impressive example of the dramatic late die state which has a bold die crack bisecting the obverse. Sharpness near XF40, very well defined so that the die crack is visible all the way across, even over the highpoints. Glossy dark olive and lighter steel, there is some underlying roughness and minor signs of smoothing. Nice eye appeal in spite of the impairments. Removed from an NCS AU details holder and the label is included. *Ex George Ramont 3/25/1980 - Jules Reiver; Heritage 1/2006, lot 20122.*



417. 1839 N-9 R2 XF45. Silly Head. Sharp AU55 detail but lightly cleaned, some faint hairlines and rather bright sheen are the result. No roughness or marks though and the overall appearance certainly has some appeal. Mostly light olive in color with some steel, pink, and golden overtones. LDS with extensive obverse rim breaks and flowlines on each side.



418. 1839 N-9 R2 VF30. Silly Head. Another sharp example with right around AU50 detail. The surfaces are quite dark and matte from fine granularity and light verdigris, but at least there are no marks. Fairly early die state with no obverse rim breaks.



419. 1839 N-12 R4 F15. Booby Head. Glossy dark chocolate with lighter steel brown devices. VF detail but there are some minor roughness and marks in the fields. E-MDS with a light obverse die crack from the rim at star 4 to Liberty's nose, the start of what will become an epic bisecting break.



420. 1839 N-12 R4 G5. Booby Head. Another example in what might be a slightly earlier die state, although a trace of the die crack is visible over the inside point of star 4. Smooth golden-brown surfaces, very nice for the grade.



421. 1839 N-15 R6- VG7. Booby Head. The key 1839 variety and up there amongst the rarer of all middle date varieties. Just a few dozen examples are known and most grade VG and lower. This piece has F12 detail but was polished a while back, now partially retoned to dark olive. The attribution points are clear including a very strong chip on star 10 which, together with the worn reverse J, clinches its N-15 status.

422. **Group Lot of 8 Middle Date Varieties, 1824-1837.** Includes 1824 N-2 R2 G5; 1825 N-10 R3 FR2; 1828 N-6 R1 G4; 1828 N-9 R4 G6; 1834 N-4 R2 G5; 1835 N-13 R4 AG3; 1837 N-7 R1 VG10; 1837 N-10 R1 G5. Most are lightly sharper with defects, but nothing too horrible. Lot of 8 coins. *Ex Dennis Fuoss. A donated lot, all proceeds to EAC.*



423. **Coronet Head Large Cent "Faux Brockage."** A neat looking piece with incuse detail from a middle date large cent on both sides, but unfortunately not a mint-made double brockage. Just a product of smashing a few coins together, but appears to have been done a while ago as the surfaces and color have an aged and worn look to them.



424. 1840 N-8 R1 VF35. Large Date. Very light gold-en-tan brown color with some subtle chocolate woodgrain. XF detail and has a decent amount of frosty luster in the fields, but lightly cleaned and there is a small patch of hair-lines at the upper obverse border, and a peck mark above T in CENT. An attractive piece despite the description. MDS (b, late). *Ex Bill Gape.*



425. 1841 N-7 R2 VF25. Glossy medium brown surfaces, nice quality and eye appeal for the grade. Just a few normal circulation marks and what looks like a dig on the bust is actually a planchet delamination. MDS (b).



426. 1842 N-3 R3 XF40. Large Date. Sharp AU50 detail and has smooth, mark-free surfaces. Deduction for having been cleaned and recolored, now a rather mottled mix of olive and steel hues. MDS (b).



427. 1843 N-2 R1 XF45. Petite Head, Small Letters. A lustrous 60 coin or very nearly so and there is some original mint color remaining on each side, about 5% red overall. Net graded due to spots of darker toning with minor verdigris on each side. Still an appealing coin given the luster and mint red, and a good example of the earliest die state of this variety with all of the hub defects and die lines clear. EDS (a). *Ex M&G 1/11/1997, lot 455 - Jack Wadlington.*



430. 1844/81 N-2 R1 VF25. A solid example of this popular *Red Book* variety. Glossy medium brown, the obverse with many minor contact marks, but nothing really out of line for the grade. Small spot of light verdigris on the rim over the first T in STATES. The blundered date detail is bold. E-MDS (a, late). In an old ANACS XF40 holder.



428. 1843 N-8 R2+ AU50. Petite Head, Small Letters. Pleasing, original chocolate brown surfaces. No marks or spots, just a dusting of light carbon in a few places. Wear is minimal and there is frosty luster in the fields. E-MDS (a) with crisp repunching on the date and not much crumbling under the nose. *Ex Bill Gape.*



431. 1844 N-5 R1 AU50. Pretty light brown color with slightly lustrous surfaces and a bit of mint red remaining on the reverse. Minor staining on the reverse rim from 3 to 6 o'clock, but nice quality in general and hardly any marks. Very early die state with fine die polishing lines covering much of the surfaces and no cracks have yet developed. In a PCGS AU58 holder.



429. 1843 N-17 R5 VF25. Mature Head. A nice mid-grade example of the rarest die variety of the date (not including the proof-only N-14). Glossy medium brown and steel with no problems, just minor contact marks. The attribution points are obvious. Besides a single Gem UNC, all known examples are XF and below and this piece would probably rank in the best dozen or so. *Ex Bill Gape.*



433. 1845 N-11 R3 VF35. 10 points sharper and an attractive coin, but close inspection reveals a very slight bend to the planchet. Surfaces are pretty clean, just a few small nicks, and tiny digs on the rim outside star 10 are the only damage probably associated with the coin being bent. EDS (a). Removed from a PCGS AU55 holder and the label is included..



434. 1846 N-3 R2 AU50. Small Date. A rare die state (c), the first in a progression of die breaks on the reverse for this variety, this one with a cud only over ES of STATES. Very sharply struck and barely worn. Deep chocolate brown with some dark olive and maroon patination, traces of rough build up around the date and lower bust. Among the best few of around a dozen known in this die state.

432. 1845 N-6 R2 MS60. Lustrous light olive brown and steel with mint red glowing in the fields on each side, about 10% original color remaining. Would be a 62 coin if not for a few nicks on Liberty's jaw and one off the chin. Besides these and a couple tiny toning spots, the surfaces are excellent. Struck from fresh dies, shows clashmarks at the inner curl but lots of die finishing lines are visible and there is no trace of the die cracks that develop at the stars and legends. E-MDS (b).

Pedigreed Late State 1846 N-3



435. 1846 N-3 R2 MS60. Small Date. A lovely mint state cent with lustrous steel brown and chocolate surfaces and quite a bit of mint red on the reverse. The luster and eye appeal is so nice that you don't immediately notice the coin's one flaw - an area of tooling behind the lower hair curls where a spot was removed. Would grade a couple point higher if not for that. One of the finer known examples of die state (f) which has a rim cud at TATES OF. Comes with a nice provenance as well. *Ex Robert J. Kissner, New Netherlands 6/23/1954, lot 487 - Willard C. Blaisdell 9/1976 - Ted Naftzger, 1991 EAC Sale, lot 319 - Tom Morley, Superior 5/31/1992, lot 390 - Robinson S. Brown, Jr., 2002 EAC Sale, lot 580.* Includes all the previous owners' envelopes from Blaisdell on as well as an old Grellman card from when Naftzger owned the coin.



436. 1846 N-8 R1 MS60. Small Date. A sharp, lustrous UNC with attractive if rather unusual toning. The obverse is a classic "greenic" combining light golden-olive and se-green hues, while the reverse is reddish chocolate brown with golden-tan borders. No marks or flaws of any importance, just some microscopic abrasions in the obverse fields. MDS (b, early).



437. 1846 N-9 R2 XF45. Small Date. Frosty chocolate brown with some woodgrain toning on the obverse. Flawless except for two minute scratches above star 10 and another even smaller one under the wreath ribbon. A very appealing cent for the grade. M-LDS (b). *Ex Bowers & Merena 10/1990, lot 6181 - Evan Kopald, M&G FPL 2006.*



439. 1846 N-16 R4 VF20+. Tall Date. Choice light chocolate brown. Glossy and very nice for the grade, a little scratch on the rim at star 6 is the only mark to note. EDS (a). Ex 2012 EAC Sale, lot 420 - Bill Gape.



440. 1846 N-23 R5 F12. Tall Date. Glossy medium brown with woodgrain streaks of dark chocolate. Quite nice for the grade with just the normal circulation marks one would expect. The repunched 1 and reverse points that confirm the attribution are clear. EDS (a). Ex Bill Gape.

438. 1846 N-12 R1 MS60+. Tall Date. Gorgeous medium brown and steel surfaces with blue-green toning outlining the devices and mint red hiding at ONE CENT. Exceptional surface quality with no marks or spots to report. A premium example of the Tall Date *Red Book* variety. E-MDS (b). In an NGC MS65BN holder.



441. 1846 N-23 R5 VG10. Tall Date. Another decent lower grade example of this rare variety. This one lightly cleaned and recolored to a light steely olive brown. Very few marks but a bit of rough texture in the lower right obverse field. EDS (a).



442. 1847 N-1 R2 VF35. A neat variety with bold repunching on all four digits of the date. Sharpness of XF though some detail appears weaker due to a rather blunt strike. Slightly glossy reddish medium brown with traces of minute porosity in the fields. MDS (b). In a PCGS AU50 holder.



443. 1847 N-10 R3 MS60+. A sharp mint state example of this better variety with pleasing, frosty surfaces and about 5% of its mint red intact. A few carbon spots to report - at star 11, U in UNITED, and a tiny one at CA of AMERICA. The only mark is a little nick below CENT. Relatively few mint state examples are known for the variety, probably no more than 10, and this is certainly one of the finest representatives of the early die state (a). In a PCGS MS64BN holder. *Ex L. Nielson 6/1975 - Louis Ullian - Superior 6/5/2000, lot 372 - Jack Wadlington, Stack's Bowers 3/2016, lot 11062.*

1847 N-27, ex Downing-Blasidell-Naftzger



445. 1847 N-27 R4 VG8. Straight Clip & Broadstruck. A significant sort of error on a Braided Hair cent and definitely the largest straight, end-of-strip planchet clip we've seen on the type. Its wide rims imply a broadstrike, which would be quite the coincidence to have both errors occur at once. It's possible the metal flow has something to do with the lack of metal in the clip area and may not be a collar issue. Choice for the grade with smooth chocolate brown surfaces.



446. 1847 N-36 R5 VG10. F+ detail with some dark toning spots on the obverse and nicks and scratches on the reverse. Otherwise glossy chocolate brown and not too bad for the grade. A key 1847 variety and this is readily identifiable example - showing the distinctive bulge at the central obverse and reverse points at ONE CENT. *Ex Henry T. Hettger - Ron Houseknecht, Goldberg's 5/27/2012, lot 313 - Bill Gape.*

444. 1847 N-27 R4 MS60. Lustrous chocolate brown with some steel overtones on the reverse. A pretty cent without any notable flaws. LDS (c). Noyes photo #31467 and at the time of the Naftzger sale this was TCC#4 in Noyes and TCC#8 in Grellman as AU58+. In a PCGS MS65BN CAC holder. *Ex Homer K. Downing 4/5/1948 - Willard C. Blasidell 9/1976 (via Del Bland) - Ted Naftzger, Goldberg's 9/2009, lot 795.*



447. 1848 N-11 R5- VF30+. Glossy medium brown surfaces with no problems and nice eye appeal. An excellent mid-grade example of this rare variety and die state, M-LDS (c), with a single cud above ES in STATES.



449. 1848 N-13 R4+ F15. Glossy light brown. Nice for the grade, one rim bump over star 6 bears mention. Rare LDS (c) with rim cud over TES though it is rather weakly defined on this example. *Ex Bill Gape.*

TDS 1848 N-11, ex Grellman



448. 1848 N-11 R5- VF30. The rare latest die state of the variety, state (e), with 3 rim cuds on the reverse. Reddish dark chocolate color indicative of having been recolored, but the surfaces have a fairly natural gloss and no hairlines or other damage. Removed from a first generation PCGS holder and the label is included. *Ex Henry Hettger - Bob Grellman - 2012 EAC Sale, lot 448 (the same lot number as here!) - Bill Gape.*



450. 1848 N-32 R5 VG8. A very tough variety that almost always comes in well circulated grades such as here. This is a pleasing one for the grade with nice chocolate brown color and just myriad tiny circulation marks. Easily attributable with clear obverse points and reverse cracks. *Ex John Schoentag, M&G 1/6/1996, lot 1105 - Bill Gape.*



451. 1848 N-36 R5 VF25. A nice, original example with chocolate brown surfaces covered in a layer of interesting greenish-olive patina. A clear representative of the variety showcasing the distinctive die injuries at the portrait. EDS (a).



452. 1848 N-37 R4+ XF40. A significant example of the variety. Only one mint state example is known followed by a handful of XF-AU coins. This piece falls just shy of that second pack, but would still probably be counted among the best dozen. Pleasing chocolate brown surfaces with only minor contact marks. In an NGC MS61BN holder. *Ex Heritage 1/2003, lot 5226.*



453. 1849 N-11 R1 XF40. AU50 detail, a nicely sharp example of this late die state. Cleaned and recolored to an uneven steel brown and ruddy orange. The surfaces are glossy and mostly free of marks, only a few light abrasions are seen on the rims. Rare LDS (g). *Ex Bill Gape.*



454. 1849 N-20 R1 VF35+. Choice glossy chocolate brown. An ideal cent for the grade. There are two small spots of darker tone at the reverse border if one were to nitpick. MDS (b). *Ex Bill Tivol.*

Rare 1849 N-30



455. 1849 N-30 R5+ VF20. A key late date variety. This is a very nice 20 coin with glossy chocolate brown surfaces and no problems beyond some typical contact marks. M-LDS (b) with crumbling in the top of the N in ONE.



456. 1850 N-6 R1 MS60+. Flashy steel brown with traces of mint red at the borders and ONE on the reverse. Excellent surface quality showing only microscopic abrasions. LDS (c). In a PCGS MS63BN holder but also comes with a PCGS MS64BN label from a previous certification.



457. 1850 N-7 R2 MS60+. Lustrous steely chocolate brown with mint red in the left obverse fields. Short scratch over N in ONE, otherwise just miniscule abrasions and a couple tiny carbon spots. A common variety in mint state due to a hoard, but this is certainly a pretty one. MDS (b, early). In a PCGS MS64BN holder.



458. 1850 N-14 R4 VF35+. Glossy reddish olive brown surfaces with some mint frost through the peripheral flow-lines. A few minor contact marks, none are very distracting. MDS (b, late). Comes with a Grellman card marked 40/35+ and notes "sulfur highpoints" indicating a recoloring - very nicely accomplished if so. *Ex Tom Reynolds 4/2009 - Fred Iskra - Bill Gape.*



459. 1850 N-20 R5 VF30. A lovely VF specimen of this notable late date rarity. Glossy light chocolate brown surfaces, the toning even and attractive, and there are only minor contact marks on the obverse. MDS (a, late). Tied for CC#5 in the Grellman census as of its 2016 auction appearance. *Ex Norman Wolfe, Goldberg's 1/31/2016, lot 832 - Bill Gape.*



460. 1850 N-24 R4+ G6. A rough example but comes with some history. Part of Bob Grellman's personal collection in the 1980s and includes an early grading card of his detailing census info for the 12 known examples at the time (July 1989). Perhaps as many as 100 could be accounted for today, which is a testament to the effect Grellman's attribution guide had on late date collecting, facilitating more widespread involvement in the series and the discovery of many new specimens. *Ex Bob Grellman - Bill Tivol.*



461. 1851 N-10 R1 MS60. Lustrous chocolate brown with some light olive toning on the reverse. An attractive, problem-free coin with no contact marks of any consequence and just a few tiny carbon spots around ONE CENT. M-LDS (b). In an old NGC MS65BN holder.



462. 1851 N-12 R1 AU55. A beautiful, lustrous and partially red coin that would easily grade MS63 if not for some interesting graffiti on the reverse - what appears to be "27" above the wreath bow and "No 27" below it. Otherwise a mark-free coin with bold luster and nice steel-blue toning. EDS (a), sharply struck with lots of die lines on the obverse.



465. 1851 N-40 R5 VF30. Sharper by about 5 points, it's difficult to determine exact sharpness on this variety due to the severe bluntness of the obverse portrait. Light steel brown, the surfaces gently cleaned and there is a minor stain around star 9. The overall quality and grade are very respectable for this rare variety, there are only a handful of high grade examples known.



463. 1851 N-15 R4 AU50+. Pleasing medium brown and slightly lustrous. No marks that catch the eye, just a little bit of dirt in the details which gives this cent a nice, original look. Early die state, with clear obverse points and minimal flowlines; significant as such as this variety is normally encountered in high grade only in the later states that were part of a hoard.



466. 1851 N-40 R5 F15. Another example of this distinctive rarity. This one more worn but with rather similar surfaces. Lightly cleaned, glossy steel and olive brown, and the obverse shows many tiny contact marks. Detail around VF20. *Ex Bill Gape.*



464. 1851 N-37 R4 VF35. XF40 sharpness and generally nice, glossy reddish medium brown with woodgrain tone on the obverse. Several contact marks on the obverse and a few little rim ticks hold back the grade a bit. LDS (c).



467. 1852 N-6 R2 MS60+. Frosty chocolate brown with a little bit of olive undertone on the obverse. Pleasing cartwheel luster and no marks that stand out, even under magnification. EDS (a), before the obverse rim cud. In a PCGS MS65BN CAC holder. *Ex M&G 7/1993, lot 316 - Robinson S. Brown, Jr., Superior 6/2002, lot 1061 - Jack Wadlington, Stack's Bowers 7/2015, lot 2604.*



468. 1852 N-21 R4 AU55. A sharp 60 coin with a bit of frosty luster on each side. Nicely recolored to a dark olive brown on the obverse while the reverse is predominantly medium chocolate brown. A tiny nick on the rim outside star 9 is the only mark. MDS (b). Tied for CC#10 as AU55 in the Grellman census and has a nice provenance. *Ex New Netherlands Coin Co. 6/1962, lot 620 - Richard Picker - Ted Naftzger - John Ashby - Dr. Thomas S. Chalkley, Superior 1/28/1990, lot 1113 - Wes Rasmussen, Superior 2/8/1998, lot 394 - Robinson S. Brown, Jr., 2002 EAC Sale, lot 624 - Superior 9/2003, lot 994 - Fred Iskra, Goldberg's 1/31/2016, lot 860.*



469. 1853 N-7 R2 MS60. Steely chocolate brown with some faded mint red at the borders in a few places. Has a good amount of cartwheel luster and may have even more if the rather thick layer of Care, or similar protectant, on the surface is removed. MDS (b).



471. 1853 N-20 R3 MS60. Frosty chocolate brown with steel overtones. Nice cartwheel luster, next to no marks, and overall excellent eye appeal. A textbook 60 coin. M-LDS (b). Some low spots are seen within the wreath due to grease on the die. A better variety and not the easiest '53 to find in UNC. In a PCGS MS63BN holder.



472. 1853 N-24 R2 AU50. Glossy medium brown surfaces with some reflective luster in the fields. Very sharply struck from the earliest state of the dies including full radial lines on all of the stars - something seldom seen on Braided Hair cents. A really lovely piece for the grade. *Ex Superior 6/2/1986, lot 343 - Phil Moore.*

470. 1853 N-19 R1 MS63. A beautiful cent with lots of fresh luster and an average of about half of its mint red remaining between the two sides. Interesting low spot under the wreath bow where there was most likely a planchet delamination. This is, of course, an as-made feature and due to its placement, doesn't affect the eye appeal much. Otherwise, the surfaces are next to immaculate, a tiny scratch on the rim over N and an equally miniscule carbon spot over R are the only things we can possibly point out. LDS (c) with flowlined surfaces and the obverse misaligned to 9 o'clock.



473. 1854 N-2 R1 XF45. Glossy olive brown and chocolate with some rusty orange undertones. Just a few minor contact marks and carbon flecks. EDS (a) with the die line connecting the base of N in ONE. Shows the usual soft strike on the coronet tip and there is a low spot in the right obverse field.



474. 1854 N-9 R2 MS60+. A pretty, mint state example of the popular “Dartboard Obverse” 1854 with a stray 8 punched below the Y in LIBERTY and a 4 in the lower hair curls. A “greenie” of sorts with light olive-steel and sea-green toning over lustrous surfaces. Very attractive and there are no notable marks, just a few spots of off-color toning here and there. MDS (c). In a PCGS MS63BN holder. *Ex Wes Rasmussen, Superior 2/8/1998, lot 448 - Goldberg's 9/20/2010, lot 1245 - Bill Gape.*



475. 1854 N-11 R2 AU50. Excellent chocolate brown color, some frosty luster in the fields, and just very light wear on the highpoints. No marks of significance and has a choice, original appearance with a little bit of harmless old dirt in the details. MDS (b). In an NGC MS62BN holder. *Ex Bill Gape.*



476. 1854 N-22 R4 MS60. Chocolate brown with steel highpoints and a few small splashes of maroon toning. The surfaces are glossy and have strong cartwheel luster, very attractive overall. Trace of red on the reverse. E-MDS (a, late), the line at the right top of 4 from what was probably a mispunched numeral is dull but visible. *Ex 2004 EAC Sale, lot 659.*



477. 1855 N-2 R2 MS60. If anyone is looking for a good example of what constitutes a “choice” large cent, here you go. The surfaces are a frosty, even chocolate brown, free from any marks or spots that distract the eye. What looks like a trace of rub on the highpoints is actually just toning, probably from envelope storage. MDS (b). *Ex Bill Tivol.*



478. 1855 N-3 R1 AU55. Might at first glance appear to be a flashy, fully red cent, but the color is an unnaturally pale pinkish-orange and it's clear this coin was dipped. Nice cartwheel luster though and this was probably a 60-62 coin before someone thought they should "improve" it. EDS (a).



479. 1855 N-4 R1 AU58. A sharp, lustrous UNC with attractive olive-green toning and some red-orange at the centers. Close inspection reveals some very light hairlines in the fields from an old cleaning, but the coin has almost fully retoned. Pristine surfaces in terms of contact marks. EDS (a).



480. 1855 N-4 R1 XF45. Nice, original chocolate brown surfaces with woodgrain toning on the obverse. Glossy and almost totally free of marks, a tiny nick on the rim outside star 2 is the only thing to mention. Rare MDS (d) with two reverse rim cuds. *Ex Rod Burrell 12/1987 FPL.*

481. Trio of 1855 N-9 "Knob on Ear" Die States. Includes EDS (b) XF45, choice chocolate brown and steel; M-LDS (e) VF35, nice light brown, scratch on bust; and M-LDS (e) VF25, but appears slightly later than the preceding coin, problem-free medium brown. A neat lot of 3 coins. Worth looking at - these are better than your average "group lot" coins.



482. 1856 N-3 R1 XF45. 5 points sharper but lightly cleaned and recolored to a decent light olive brown and steel with some brick red and dark olive undertones. Still a sharp and pleasing piece, a good example of an early die state of this variety (b, early) showing just the start of the obverse die cracks.



483. 1856 N-22 R5 F12. The rarest die variety of the date and this is a lower grade, but easily identifiable example thanks to the distinctive date positioning and clear obverse lapping lines. F15 detail with some light rim damage and obverse nicks. Excellent light brown color. EDS (a). *Ex Bill Tivol.*



484. 1857 N-1 R1 XF40. Large Date. Sharp AU50 detail but lightly cleaned and recolored to a mottled olive, tan, and darker maroon. A few marks in the hair behind the ear and two thin planchet laminations that bisect the obverse, starting from the rim below the 1 and 5 in the date. EDS (a).



485. 1857 N-4 R1 XF45. Small Date. Slightly lustrous and has the sharpness of a 55 coin, but this cent was dipped a while back and has retoned rather nicely to light golden-olive. No marks to note. A sharp and pleasing example of the final date of our beloved large cents. EDS (a).

486. Lot of 5 Late Date Die Varieties. Includes 1840 N-8 R1 VG10; 1847 N-28 R3+ VG8; 1849 N-2 R1 VG10; 1851 (unattributed) F15; and 1855 N-10 R1 VF20. Generally decent coins for the grade without any major problems. Lot of 5 coins. *Ex Dennis Fuoss.* **Donated lot, all proceeds to EAC.**

487. Lot of 5 Blank Planchets. An enigmatic group of large cent-sized blank planchets begging for research. All but one are in the correct weight range for a U.S. large cent and one has some interesting denticle impressions and roller marks. Varying quality, most showing some degree of handling/circulation. A must-see lot. *Ex Mike Riugo.*

488. Lot of 8 Large Cent "Bangers." EAC convention mementos prepared by master craftsman Mike Paekard for Bill Tivol, each with the date and location of that year's EAC and most with Bill or "W.F.T." on the reverse. Includes EAC 1984, 1989 (on an S-152), 1990, 1991, 1993, 1996, 1997, and 1998. A neat group of these much beloved souvenirs. *Ex Bill Tivol.*

489. EAC 50th Anniversary Medal. Copper, 39mm. A second chance in case you missed out on lot 96. A beautiful medal commissioned last year by the club to celebrate 50 years since EAC's founding. Edge reads "HISTORY – EDUCATION – FRIENDSHIP." Only 300 were struck. **All proceeds to EAC.**

490. Set of 24 John J. Ford Jr. Collection Auction Catalogs. A complete set of softcover catalogs of this expansive and extremely important collection, sold by Staek's/Staek's Bowers from 2003-2013. Contains an immense amount of indispensable information on early American coins, tokens, medals, and paper money. **Donated lot, all proceeds to EAC.**



491. Trove of Dan Holmes Auction Materials. Dan was a great EACer, and he put together the most complete collection of large cents ever. These sales were a tribute to a beloved collector. Included are all four regular catalogs and the prices realized for all four sales in a single booklet. Also included are a hard cover version of Holmes I that was given to attendees at the reception the night before the sale, a second soft cover copy, a spiral bound copy and a RARE, earlier edition of the catalog in grey covers as well as a small supplement to that. Also included is the invitation to the reception. In addition, there is a copy of the Coin World issue reporting the sale and the first large cent to sell for \$1 million. There is also a spiral-bound copy of Holmes II. Finally, there are two different DVDs. One includes highlights of the sale with interviews with Dan, Bob Grellman, Chris McCawley and others. The other (not in the photo) is a promotional DVD in which Bob Grellman presents some of the highlights of the sale. **Donated lot, all proceeds to EAC.**



492. Joseph Wright, American Artist, 1756-1793 by Monroe H. Fabian. A biographical sketch of and catalog of works by Joseph Wright, artist and first engraver of the United States Mint. His engraving work for the Mint is illustrated. Published for the Smithsonian's 1985 Wright exhibition at the National Portrait Gallery. Softcover, former library copy. **Donated lot, all proceeds to EAC.**

493. Rob Norvich on 1839 Large Cents. Two versions organized in folders of material on 1839 cents that was prepared by the late Rob Norvich for his presentation on the subject at EAC 2014. Contains a wealth of information on the history, rarity, diagnostics, and values of this fascinating date. An impressive compilation of information and clearly a labor of love. **Donated lot, all proceeds to EAC.**

494. Group of 29 EAC Convention Videos on DVD. DVDs containing video footage of various presentations given at EAC conventions from 2005-2017. Filmed and produced by David Lisot. Tons of entertaining and educational content here! **Donated lot, all proceeds to EAC.**

495. Hardbound 2018 EAC Sale Catalog. Special deluxe edition, hardbound with black leather spine and corners. Limited to 10 copies. **All proceeds to EAC.**

TERMS OF SALE

1. This is a private sale. Participation is by invitation only and is limited to members of The Early American Coppers Club or invited guests. The auctioneer reserves the right to refuse to honor any bid which, at his sole discretion, he feels is not submitted in good faith. The auctioneer may withdraw any lot, without prior notice, for any reason whatsoever.
2. The highest bidder acknowledged by the auctioneer shall be the buyer. In case of dispute the auctioneer may at his sole discretion reopen a lot. In all cases the auctioneer's decision shall be final and binding on bidders.
3. All sales are payable in U.S. funds immediately upon receipt of invoice unless other arrangements have been made prior to the sale. Lots delivered in state of sale are subject to all applicable state and local taxes unless appropriate permits are on file with us.
4. Postage will be added to the invoice of all successful mail bidders.
5. A 15% buyers fee will be added to all invoices.
6. Please keep in mind this is not an approval sale. All sales are considered final. Sales to the floor may not be returned for any reason save authenticity. Sales to mail bidders are final unless lot proves to have been mis-described.
7. Lots will be available for viewing by appointment.
8. Mail bids or phone bids will be accepted up through the day of the sale. All bids will be reduced. Lots will open at one increment above second highest mail bidder. Bidding will proceed as competition dictates with the lot either selling to the floor or to the mail bidder at one increment above the second highest bid.
9. Consignor may bid or place a reserve bid on their own coins. Any coins repurchased by a consignor will be announced as a pass. Principals of the auction firm may consign or may bid on coins in the sale.

MAIL BIDS

Please mail all bids to:

Kevin Vinton
PO Box 771
Danbury, CT 06813-0771
email: kevin@indeetlib.com
telephone: (203) 305-4710

Mail Bid Form

I hereby authorize Kevin Vinton to execute the following bid(s) at the auction to be held **April 22, 2017**.

Please buy the following lot(s) for me at the price(s) not exceeding those shown. The bid(s) is made subject to the "Terms of Sale", and I agree to remit promptly on receipt of invoice or notification that the bid(s) is successful. This signed bid sheet constitutes an agreement between me and KEVIN VINTON.

NAME _____

ADDRESS _____

CITY _____ STATE _____ ZIP CODE _____

SIGNATURE _____ PHONE () _____

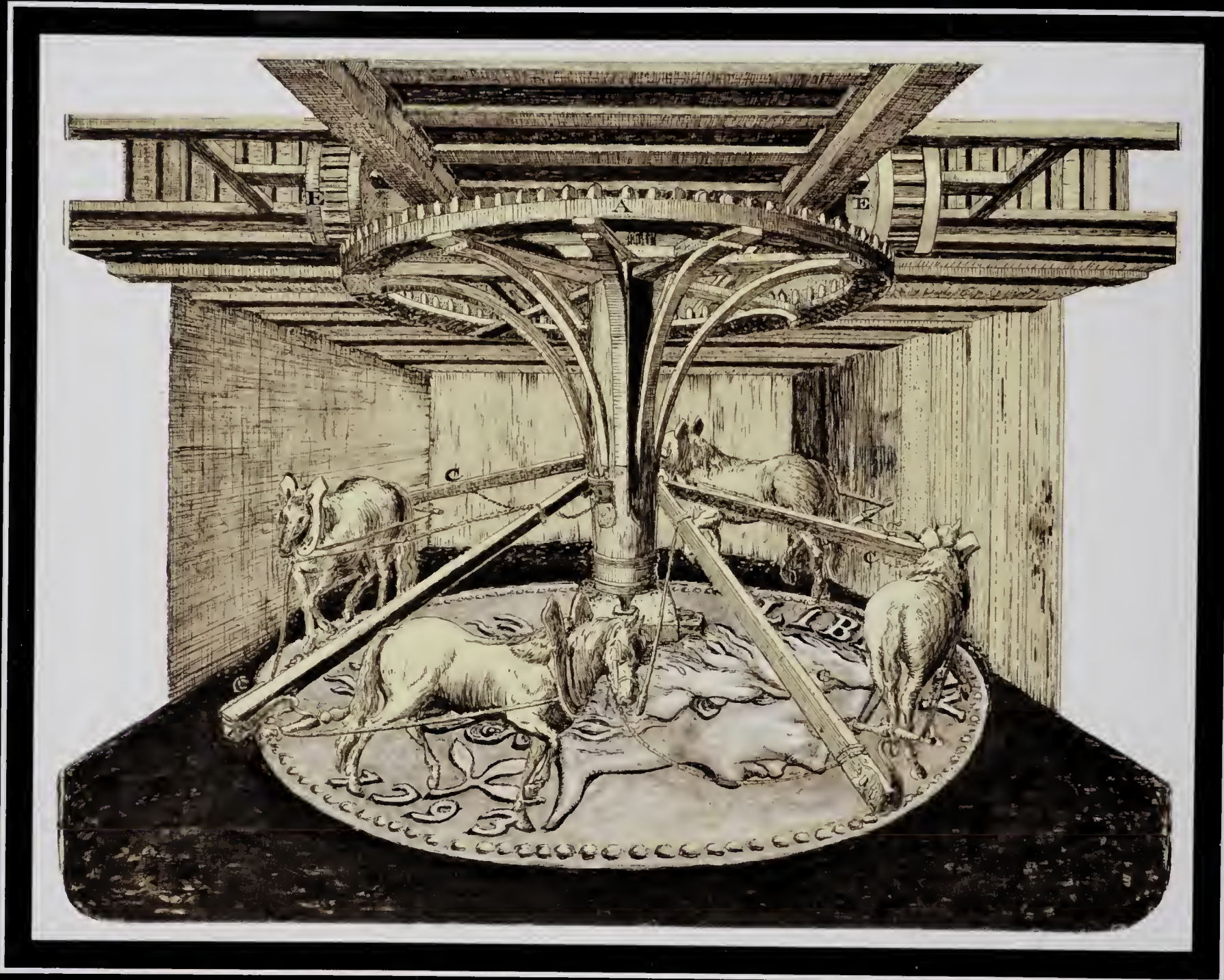
EAC# _____

IF NECESSARY, PLEASE INCREASE MY BID(S) BY:

10% 20% 30% Other _____ %

SPECIAL INSTRUCTIONS:

Please Mail Bids to: Kevin Vinton, PO Box 771, Danbury, CT 06813-0771. Phone: (203) 305-4710
Email bids up to the day of the sale to Kevin at kevin@inndetlib.com



Copyright 2018

inde•et•lib

PO Box 771 Danbury, CT 06813