

THE 2022 EAC CONVENTION SALE

MAY 14, 2022
6:30PM CST

COLONIALS
HALF CENTS
LARGE CENTS

HILTON ST. LOUIS AIRPORT
10330 NATURAL BRIDGE RD
ST. LOUIS, MO



EARLY CENTS AUCTIONS



EARLY CENTS AUCTIONS

www.earlycentsauctions.com | info@earlycentsauctions.com
P.O. BOX 6400, Austin, TX 78762
Lucas Baldrige, Texas Auctioneer Lic#18106

The EAC Sale catalog and sale is put on by

EARLY CENTS AUCTIONS

Includes the following:

Chris McCawley - EAC member #1394
Consignments and Expert Direction

Bob Grellman - EAC member #575
Grading, Cataloger

Lyle Engleson - EAC member #6888
Photography, Catalog Design, Support

Lucas Baldrige - EAC member #6162
Auctioneer, Shipping and Support

Travis Hollen - EAC member #6329
Shipping and Support

Welcome to our EAC sale catalog for 2022. There are many nice individual coins and a couple of nice collections. We hope there is something for everyone.

The sale will take place Saturday night, May 14, in the ballroom of the St. Louis Hotel and will be called live and available for bidding in real time on icollector.com search Early Cents Auctions.

Pre-sale bids can be placed on icollector or by email to cmccawley@aol.com or directly to my P.O. Box 6400, Austin, TX 78762 address.

All grades listed in this catalog are done using EAC standard grading by Bob Grellman unless otherwise noted.

For images of coins in holders please see our website at www.earlycentsauctions.com or www.icollector.com



THE 2022 EAC CONVENTION SALE

Saturday, May 14th, 2022 7PM EST

Location

THE 2022 EARLY AMERICAN COPPERS CONVENTION
Hilton St. Louis Airport
10330 Natural Bridge Rd
St Louis, MO 63134

Lot Viewing

Will be held at our booth
Friday, May 13th through Saturday, May 14th
During Show hours or by appointment

Questions

Chris McCawley
405-226-5072
cmccawley@aol.com

Lucas Baldrige
972-310-9497
friscomint@live.com

Bidding

Live and Pre-Sale bids can be placed on [iCollector.com](https://www.earlycentsauctions.com)

This is a private sale, you must be a member of EAC
to bid (please read our Terms of Sale located in the back of the catalog
before bidding).



EARLY CENTS AUCTIONS

www.earlycentsauctions.com | info@earlycentsauctions.com

P.O. BOX 6400, Austin, TX 78762

Lucas Baldrige, Texas Auctioneer Lic#18106

© 2022 EarlyCentsAuctions

Welcome to the 2022 EAC Convention Sale

Saturday, May 14th, 2022

Colonial

lots 1-20, pg. 5-9

Tokens

lots 21, pg. 9

Half Cents

lots 21-137, pg. 9-28

Large Cents

lots 138-437-, pg. 28-99

Numismatic Literature

lots 438-450-, pg. 100-103

“LiveBidding” at iCollector.com and our app Early Cents Auctions

Enjoy the ability to participate in the auction via internet from the comfort of your home. All you need is the latest version of your browser, such as Google Chrome, Safari or Microsoft Edge. You can watch the sale with audio/video and bid on any lots as its happening “LIVE”.



Scan the QR code above to get connect



Early Cents Auctions

Our app is also available in the App store and Google Play store under Early Cents Auctions. Create watch lists, view images and bid all in one place. Same Buyers Premium applies.

In order to participate online or through the app you must:

- Sign up for an account at iCollector.com
- Confirmed that you are signed in using the registration link and approved for the auction
- On the day of the auction, sign in and participate

After the auction you can visit iCollector.com or earlycentsauctions.com for prices realized and browse our buy it now store at earlycents.com.

15% Buyers Premium

(if paying by PayPal an additional 4% will be added to the hammer price)



EARLY CENTS AUCTIONS

Presents

THE ERNIE WESTLUND COLLECTION



Ernie was a passionate and lifelong numismatist. From the time he was 10 years old in 1956, Ernie and best friend Dan Hamelberg could be found on the living room floor scouting through bags of coins from the bank his mother brought home for the budding coin collectors. Throughout over 60 years of collecting, Ernie never lost his excitement and passion for the

history, beauty, and intrigue inherent in antique coins, specifically Lincoln cents and early American half cents, and later on-paper money. From his earliest days collecting until the end of his life in August 2019, Ernie enjoyed hunting through auctions and coin brokerages and reading numismatic publications of all kinds, but equally enjoyed the connections he made with others who shared his passion and keen eye for a beautiful specimen. We can't mention Ernie's collection without also mentioning Bob Rozycki, longtime owner of Sycamore Coin Gallery in Sycamore, IL, who helped Ernie build and enhance his collection over many years. Ernie's appreciation of fine details meant many evenings and weekends alongside his wife and daughters, holding a coin scope to examine the design, minting, and colorations of his favorite pieces. He held longtime memberships in a variety of numismatic organizations including the American Numismatic Association, Early American Coppers, and the Society of Paper Money Collectors, to name a few.

His daughters are proud to showcase a portion of Ernie's collection with The Early American Copper club and hope the new chapter for these cherished pieces will continue to bring joy and excitement to the next generation of collectors.

THE JACK YOUNG COLLECTION

I am an Engineer by training and collector of low grade early large cents and counterfeit researcher and author on the subject of the recent deceptive struck counterfeits; founder of the Dark Side- Counterfeits and Fakes Face Book watch group, participating member of Early American Coppers, the Liberty Seated Collectors Club, C4, the NLG, ANA and ANS.



I actually started collecting as a youth with my Grandmother filling a Lincoln "penny board" mostly out of circulation back when the dinosaurs roamed the land... She actually took me to my first coin shop in the Dayton Arcade where I saw my first large cent, and that was as they say "history"!

I joined Early American Coppers in 2002 and continued to collect low grade early large cents by date and some varieties, but became interested in the latest deceptive struck counterfeits back in the fall of 2015 with the "discovery" of a fake 1798 "S-158" large cent by my friend and fellow EACer Kevin Vinton, so I have him to blame!

As my focus has changed to spending much of my spare time researching, documenting and writing articles on these threats to the Hobby I decided it is time to pass on my lower grade large cents to other collecting members here in St. Louis- many are known and pedigreed examples and I hope others find them as interesting as I do.

Laura and I are looking forward to "taking it easy" at EAC 2022 after having hosted the last actual in person event in Dayton '19 and plan to have a table there- looking forward to seeing all our copper friends again!

Best, Laura and Jack.

COLONIALS



LOT 1 1723 Rosa Americana Halfpenny Breen-121 VF30. Variety with No Stop after a Large 3. Frosty medium olive brown with shallow tan crud caked into some of the recesses in the hair. Otherwise choice with sharp details and very nice eye appeal. Weight 122.0 grains.



LOT 4 1787 Connecticut Miller 1.1-A R3 Mailed Bust Right F12. The very distinctive "Small Head" variety. The obverse is choice with medium brown and chocolate toning, no defects, and superior eye appeal. The reverse is darker with blotchy toning, a mix of dark chocolate and lighter brown over finely granular surfaces. Like two different coins. The date and devices are complete and strong. LDS with obvious swelling on both sides. A curved planchet clip affects the dentils over ON in CONNEC (a significant percentage of this variety come with planchet clips). Weight 117.5 grains.



LOT 2 1760 Voce Populi Nelson-10 Rarity-5 VF20. The "Tall Head" variety. The obverse is much sharper while the reverse is considerably weaker, a 35/7 split. In fact the obverse is one of the finest known for the Tall Head variety, and a planchet void over the O in POPULI (as struck) is the only mark on that side. There are myriad fine scratches covering the reverse, all old and lost in the attractive toning. The planchet is egg-shaped as often seen on the N-10 variety. There is a minor beveled-edge planchet clip at the feet of the seated figure. Glossy light to medium chocolate brown. Weight 163.2 grains.

Ex 2009 C-4 Sale, McCawley & Grellman Auctions 11/21/2009:52 (lot ticket included)



LOT 5 1787/8 Connecticut Miller 9-R R4+ Mailed Bust Left Overdate 7 over 8 VG7. Sharpness F12 but slightly rough, particularly on the obverse. No verdigris and the only notable mark is a chip out of the rim off the bust. Slightly glossy chocolate brown with slightly lighter brown highpoints. Unlisted late die state with strong swelling over the right side of the date (see page 482 in the new book on the series by Randall Clark). As a result of the swelling the date is weak but still readable. A minor planchet clip shows over NEC. Weight 109.1 grains.

Ex John S. Ashby auction 9/1982:236



LOT 3 1774 Counterfeit British Halfpenny Reverse Brockage F12. Glossy medium brown and light chocolate. Smooth and attractive. The date is faint and the 4 is nearly invisible because the digits were lightly pressed into the die. Otherwise the devices are clear on both sides. Weight 128.3 grains.



OFF-CENTER CONNECTICUT



LOT 6 1787 Connecticut Miller 33.1-Z.13 R5- DBL F12 but Counterstamped. Glossy medium chocolate brown with lighter brown toning on the devices. Smooth and quite nice for the grade but there is a "4" stamped into the chest on the obverse. Struck 20% off center to K-1 leaving the date and some of the legends off the planchet. Weight 126.2 grains.



LOT 7 1787 Connecticut Miller 33.16-Z.15 R4 Draped Bust Left VF25. Slightly sharper but there is microscopic roughness under rather glossy chocolate and steel brown toning. No marks or verdigris. The only planchet flaw is a small chip at the rim left of the date (as struck). Struck slightly off center to K-1.5 leaving the tops of CON off the planchet. Otherwise the date and legends are all easily readable. M-LDS with swelling and die cracks. Weight 140.3 grains.



LOT 9 1788 Connecticut Miller 2-D R1 Mailed Bust Right VG8. Significantly sharper but covered with fine roughness mixed with myriad hairline scratches, strongest on the portrait. A few stronger scratches show left of the hair ribbon. Slightly glossy dark olive brown, nearly black. Struck slightly off center to K-9 leaving most of the legend in that direction unreadable. The date is clear. Weight 114.3 grains.

Ex 2004 C-4 Sale, McCawley & Grellman Auctions 11/13/2004:211 (lot ticket included)



Lot of 2

LOT 8 Pair of 1787 Connecticut Coppers. Includes M.33.1-Z.19 R5 Draped Bust Left VG10 with a straight-edge planchet clip at NEC and M.38-GG R4 AUCIORI variety VG8. Both are slightly sharper with minor defects and smooth surfaces. Both have a clear date and legends. Weights are 112.9 and 139.0 grains respectively. Lot of 2 coins.

Both are ex Paul Padget 6/26/1982



LOT 10 1787 Massachusetts Half Cent Ryder 4-C R1 VF35. Slightly sharper but there are light pin scratches around MASS. The scratches are only visible under magnification and the eye appeal of this piece is excellent. Frosty medium chocolate brown with lighter brown and tan in some protected areas.



LOT 11 1787 Massachusetts Cent Ryder 6-G R4 VG10. Glossy light to medium chocolate brown. No corrosion or verdigris, just minor contact marks. The only notable mark is a small rim bruise at CO in COMMON. The date and legends are clear. Weight 154.5 grains.

Ex Stack's circa 1964

RARE LATE STATE MARIS 6-D



LOT 12 1787 New Jersey Maris 6-D R2 G5. Glossy medium reddish chocolate with smooth, problem-free surfaces, just well worn. The obverse is weaker than the reverse, perhaps a 3/8 split. The date is faint but readable while the legends on the reverse are clear. What makes this piece special is the die state. A long, clearly defined cud break touches the bottom of the shield. A neat piece that comes with a nice provenance. Weight 133.1 grains.

Ex the estate of Louis E. Eliasberg, Jr., Stack's 3/2/2010:2137 (lot ticket included)



LOT 13 1787 New Jersey Maris 38-Y R3 VF25. Very attractive glossy medium chocolate brown with lighter brown and tan toning on the highpoints. The only defect is a minor planchet clip left of the plow handles, as struck. The date and legends are complete and clear. Weight 144.4 grains.



OVERSTRUCK NEW JERSEY



LOT 14 1787 New Jersey Maris 56-n R1 over Double Struck 1787 CT M.31.1-gg.1 F15+. Glossy steel brown blending to light chocolate in protected areas. Smooth and attractive, void of any notable marks except for a round punchmark into the bottom of the shield and two minor planchet flakes over PLU (as struck). A minor planchet clip at the handle end of the plow affects only the edge device. Ample undertype from the Connecticut is visible on both sides, enough to identify the die variety of the CT (Mike Ringo was a savant at identifying undertypes; perhaps he identified this one for the owner long ago. Wasn't me!). The CT was struck twice, once centered and another time about 25% off center. A nice example of a great overstrike. Weight 121.5 grains.



LOT 15 1788 Vermont Ryder-25 R2+ VG8. Sharpness F plus. Brown and tan color. Finely granular surfaces. Small internal cud on bust.

Ex Paul Padget 6/26/1982



LOT 16 1794 Talbot Allum & Lee Cent with New York Breen-1032/Fuld-4/Miller NY-877 EF45. Choice glossy steel brown and light chocolate with frosty tan in protected areas. No defects, just light friction on the highpoints. Weight 162.0 grains.

Ex Coin Galleries Mail Bid Sale 8/22/1984:1250 (plated)



LOT 17 1781 Libertas Americana Medal Betts-615 ELECTROTYPE COPY EF40. Rather glossy dark olive brown and steel. A nicely executed electrotype copy of this famous early American medal. Peeps of undertype base metal can be found on a few of the highpoints but there are no defects. Weight 888.9 grains.

HALF CENTS

BLUNDERED EDGE LETTERING



LOT 18 1785 Inimica Tyrannis Americana with Large Circle ELECTROTYPE COPY EF45. Glossy chocolate brown. The surfaces are a bit uneven but this electrotype copy is essentially as made. An original of this CONFEDERATIO copper is nearly unobtainable. Weight 189.9 grains.

Ex Northeast Numismatics



LOT 19 1792 Idler Copy of the Getz Pattern for a Washington Half Dollar Baker-544 VF30. Variety with a Small Eagle, the Kenny-1 version of the Idler copies. Glossy medium brown. Smooth and attractive, just lightly worn. The only marks are some minor scratches in the fields, strongest just off the bust tip. Weight 218.7 grains.



LOT 20 (1791) Middlesex Halfpenny Token D & H #892 AU55. Variety with Tree of Liberty on one side and a Guillotine in the other. Frosty steel brown and tan. Late die state with significant swelling on the "tree" side. Weight 162.7 grains.

TOKENS



LOT 21 1837 Hard Times Token Low-39, HT-52 R1 AU50. Glossy light to medium brown with peeps of frosty very faded mint color showing in some protected areas. Just a touch of friction on the highpoints plus a few light contact marks on the neck and jaw.



LOT 22 1793 C-2 R3 Liberty Cap VG8. Sharpness F12 but the fields and protected areas are covered with very fine porosity under glossy chocolate and olive brown toning. No verdigris or notable contact marks but there is an obvious chip out of the planchet above the first A in AMERICA. MDS with the reverse rotated 45 degrees clockwise from a head-to-foot die orientation. The date and legends are complete and clear. The edge lettering is blundered with several letters overprinted thanks to a second trip through the edge lettering device. As a result the edge lettering is incomplete and difficult to read.




LOT 23 1793 C-2 R3 Liberty Cap AG3. Mostly glossy chocolate brown with lighter brown toning on the devices. The devices are smooth but there is minor roughness in the fields and protected areas. No verdigris and the only notable mark is a light vertical nick right of the eye. The date is readable although the lower half of the 93 is quite weak and most of the legends are readable. Struck with the reverse rotated 45 degrees clockwise.

Ex Colonel Steven K. Ellsworth



EARLY CENTS AUCTIONS



LOT 24  1794 C-1a R3 NGC graded VF20. Large Edge Letters. Slightly glossy reddish steel brown with darker steel brown toning on the highpoints. The surfaces are lightly oxidized and might benefit from a proper brushing. No corrosion or verdigris, only tiny marks including a thin planchet fissure on the neck and shoulder and a thin vertical nick just right of the ear. MDS, Manley state 2.0, with light clashmarks. The date and legends are complete and easily readable. **Our grade is VG10+.** Certificate #3473262-001



LOT 25 1794 C-2a R2+ VF20. Small Edge Letters. Five points sharper with too many small nicks for the higher grade. A diagonal nick above the A in HALF and another between the C & E in CENT are the notable marks. Glossy greenish olive brown with traces of lighter brown in some of the protected areas. LDS, Manley state 3.0, with die clashmarks on the obverse and a narrow rim cud over ERTY. The date and legends are strong. Certificate #1722995-001



LOT 26 1794 C-5a R4+ VG7. Small Edge Letters. Rather glossy olive brown with lighter chocolate brown toning covering the devices. The two-tone appearance accents the details and adds to the eye appeal, which is very nice for the grade in spite of extremely fine roughness that covers the fields and protected areas. No marks or verdigris. The date and legends are complete and clear. Rare LDS, Manley state 2.0, with strong die clashmarks at the throat and neck. This piece is the only one mentioned by Manley for the die state. Comes with a great provenance. Weight 99.7 grains.

Ex Ray D. Munde-Roger S. Cohen, Jr., Superior 2/2/1992:27-R. Tettenhorst, McCawley & Grellman Auctions/Goldbergs (The Davy II Sale) 9/4/2011:110



LOT 27 1794 C-6a R5+ G5. Small Edge Letters. A few points sharper, especially on the reverse, but there is a dent at the forehead that caused an obvious bulge below CA in AMERICA. In addition there is a nick over the eye and several dull, light scuff marks on the portrait and in the field to the right. Otherwise the surfaces are smooth with minor marks and the toning is an attractive glossy medium brown and light chocolate. EDS, Manley state 1.0, with a small bulge right of the date. The date and legends are clear except for the area affected by the bulge below CA.

Ex 2003 EAC Sale, McCawley & Grellman Auctions 4/26/2003:32 (lot ticket included)



LOT 28 1794 C-7 R5+ AG3. A couple points sharper with two diagonal scratches on the portrait into the field below the cap. The only other marks are a small rim nick left of the L in LIBERTY and another at TA in STATES. The surfaces are smooth and the toning is a very attractive glossy light to medium brown blending to darker chocolate in protected areas on the obverse. LDS, Manley state 2.0. The radial die crack at ED is strong. The date is strong and the legends are mostly clear but there are elements on the reverse that are faint or worn away, mostly a result of the late die state. Removed from a PCGS holder graded VG Details, Scratch, and the attribution is noted on the PCGS label.

Ex 2012 EAC Sale, McCawley & Grellman Auctions 5/5/2012:14-Mark Palmer 3/20/2015



LOT 29 1794 C-9 R2 F15+. Glossy olive brown with microscopic granularity under the glossy toning in the fields and protected areas. Otherwise worthy of a slightly higher grade. No verdigris and the only marks are a small rim nick over the 1 in LIBERTY and a couple more at AM in AMERICA. MDS, Manley state 2.0. The obverse is centered on the planchet but the reverse is slightly misaligned to K-5 affecting some dentils on that side. The date is strong and the legends are clear.



LOT 30 1795 C-1 R2 Lettered Edge F12. Very attractive glossy light brown with slightly darker steel brown toning on the highpoints. Slightly sharper but there is a rim bruise right of the date and a lighter one at the M in AMERICA. Otherwise choice for the grade. Nicely struck EDS, Manley state 1.0. The date and legends are strong



LOT 34 1795 C-6b R5+ No Pole Fair-2. Slightly sharper, especially on the reverse, but covered with fine corrosion on all but the highpoints which are smooth. No verdigris, just a couple hairline scratches that do not break the toning. The date is not visible but much of LIBERTY and most of the legend on the reverse are readable. Slightly glossy medium chocolate brown. Weight 110.6 grains (versus the 84.0-grain standard for the normal planchets).



LOT 31 1795 C-2a R3 Punctuated Date with Lettered Edge F12+. Considerably sharper but dark with fine porosity under the glossy dark olive brown toning. No verdigris but there are some old scratches in the field over the head and before the face, all blended into the natural toning. The only other notable mark is a small rim nick under the 9. LDS, Manley state 3.0, with a strong bulge at AMER. The date and legends are all very strong except for weakness at HALF CENT.



LOT 35 1797 C-1 R2 1 Above 1 VG10. Very attractive glossy medium chocolate brown and steel. The surfaces are smooth and the only notable contact marks are some light nicks on the right side of the obverse and a light scratch down from the A in STATES. LDS, Manley state 5.0, with numerous die cracks on the obverse mixed with swelling. RICA is gone due to the die failure on the obverse but the date and remainder of the legends are clear. Struck over a Talbot Allum & Lee Cent. Traces of the TAL undertype are visible over TATES. The 1 Above 1 feature is obvious.



LOT 32 1795 C-4 R3 Punctuated Date with Plain Edge F12. Very attractive glossy light brown blending to olive brown in protected areas. The surfaces are smooth and the only marks are a minor rim bruise at the second T in STATES and another tiny one under the fraction. Nicely struck E-MDS, Manley state 1.0 late, with a subtle bulge in the field before the portrait and an easily readable HALF CENT. Struck slightly off center to K-4 affecting only some dentils. The date is strong, including the comma between the 1 & 7, and the legends are complete.



LOT 36 1797 C-2 R3 VG8+. Glossy olive and bluish steel brown. Smooth and free of notable marks, just worn. Late die state with weakness at ICA. The date is strong and the remainder of the legends are easily readable.



LOT 33 1795 C-6a R2 No Pole F15. Struck over a Talbot Allum & Lee Cent. Five points sharper but lightly cleaned and retoned steel brown and chocolate with traces of tan and lighter brown in some protected areas. MDS. Struck over a TAL Cent with ONE at AMER. The date and legends are strong.



LOT 37 1797 C-3a R3 Low Head, Plain Edge G5. Glossy chocolate brown with traces of lighter brown in some of the protected areas, particularly on the reverse. The surfaces are smooth and the only notable marks are a dull nick at the right top of the wreath and a small scratch at CA in AMERICA. The details on the obverse are a few points sharper than those on the reverse (which is normal for lower grade examples of this variety). EDS, Manley state 1.0, with a small "wart" defect from the chin but no visible die crack. The date is bold and the legends are mostly clear.



OFF CENTER 1797 C-3A



LOT 38 1797 C-3a R3 Low Head, Plain Edge AG3. Slightly sharper but moderately rough. No marks or verdigris, and the color is a decent and slightly glossy medium chocolate with slightly lighter highpoints. The date is complete and easily readable but parts of the legends are weak or missing. Struck 5% off center to K-10.5. Weight 73.7 grains.

RARE EARLY STATE 1800 C-1



LOT 39 1800 C-1 R1 VG10. Glossy light olive brown with lighter steel brown toning on the devices. Reasonably smooth but a glass reveals extremely fine granularity under the glossy toning. The only notable mark is a diagonal nick on the cheek. A beveled planchet clip affects the dentils over RTY. What makes this piece special is the die state. EDS, Manley 1.0 (which he calls Extremely Rare and we can not disagree). The date and legends are complete and strong.

Ex McCawley & Grellman Auctions/Superior 2/2005:1106 (lot ticket included)



LOT 40 1800 C-1 R1 EF45. Frosty olive brown and steel with traces of golden tan in protected areas, especially on the reverse. Sharply struck and very attractive showing light friction on the highpoints. The only notable marks are two struck-through lines where pieces of thread came between the die and planchet. One of these lines meanders through CE in CENT and another extends down from the left side of the H in HALF (as struck). MDS, Manley state 3.0, with crumbling on the rim over LIB and a complete curl left of the date.



LOT 41 1800 C-1 R2 VF30+. Glossy olive brown and chocolate with a puff of lighter toning in the field below the hair ribbon. Smooth and choice showing mint frost in protected areas. MDS, Manley state 3.0, with a narrow but clearly defined rim cud over LIB.

Ex Coin Galleries Mail Bid Sale 11/5/1997:2600 (lot of 2, lot ticket included)



LOT 42 1800 C-1 R2 F15+. Slightly sharper but there are some minor contact marks on the obverse, none notable. Glossy olive brown with a spot of lighter reddish brown toning on the M in AMERICA. M-LDS, Manley state 4.0. The curl left of the date is now open.

VERY RARE 1802 REVERSE OF 1800



LOT 43 1802/0 C-1 R6 Overdate 2 over 0, Reverse of 1800 AG3. Sharpness VG8 or slightly better where the details were properly struck up, but the surfaces are covered with fine to moderate roughness. No verdigris but there is a significant rim dent over LI in LIBERTY and the opposing rim over UNI in UNITED. The date is complete and easily readable and most of the legends remain visible, although they are not strong. Slightly glossy medium brown on the devices blending to darker chocolate and olive brown in protected areas. The radial die crack through the E in UNITED to the wreath is obvious but the single leaf feature at the top of the wreath is faint at best. An easily attributable example of the very rare 1802 with the reverse of 1800 variety. Weight 90.1 grains.

Ex Don Steinmetz-Rich Bilancia 1/28/1990-Lund, McCawley & Grellman Auctions/Goldbergs 5/31/2015:60 (lot ticket included)



LOT 44 1802/0 C-2 R3 Overdate 2 over 0 G5. Slightly glossy dark olive brown and steel. The fields and protected areas are covered with uniform fine granularity but there is no verdigris. The only marks are a rim nick at T in LIBERTY and a thin nick at the left top of the F in HALF. E-MDS, Manley 2.0. The date and legends are complete and strong, and the overdate feature is obvious.



LOT 45 1803 C-1 R1 ANACS graded VF25. Frosty steel brown and chocolate with some tan in protected areas. No defects, just moderately worn. LDS, Manley state 3.0, with a bisecting die crack on the reverse. **Our grade is VF20.** Certificate #21421010





EARLY CENTS AUCTIONS



LOT 46 1803 C-1 R1 F12. At least 5 points sharper but recolored with microscopic porosity under glossy light olive and steel brown toning. No notable marks and the eye appeal of this piece is excellent. LDS, Manley state 3.0, with a fine die crack meandering across the upper half of the reverse.



LOT 50 1803 C-3 R2 VF25. Choice glossy chocolate brown. Smooth and virtually flawless with excellent eye appeal in spite of a bit of dirt in protected areas. MDS, Manley state 3.0, with an obvious bulge at the 18.



LOT 47 1803 C-2 R4 VG8. A couple points sharper with extremely fine granularity covering the planchet, strongest on the reverse but still faint there. No verdigris and the only marks are two tiny rim nicks off the lower end of the hair ribbon. LDS, Manley state 7.0, with a strong cud break at STATE. The date and legends are complete and strong.



LOT 51 1803 C-4 R4 VG10. Slightly sharper and attractive for the grade, but there are a few minor contact marks. The notable ones are a light rim bruise at D-S and two small marks over the L in HALF. Struck with the reverse rotated 10 degrees CCW.



LOT 48 1803 C-2 R4 G6+. Slightly sharper but there are some light scratches in the field left of the lower curls (all blended perfectly into the toning). Otherwise smooth and nice for the grade. Glossy olive brown and chocolate with some lighter steel brown and tan in protected areas. MDS, Manley state 3.0, with die cracks on the reverse but no cuds.



Lot of 3



LOT 49 1803 C-3 R2 EF40. Frosty medium chocolate brown and steel mottled with lighter brown on the obverse. The only marks are a rim nick at RT in LIBERTY and a nick-like planchet flake over the L in HALF. M-LDS, Manley state 4.0, with obvious swelling at 18 and a fine die crack on the reverse.

LOT 52 Trio of Half Cents 1803-1809. Includes 1803 C-1 R1 MDS (Manley 3.0) VF30 net F12 for fine roughness, 1809 C-2 R3 E-MDS (Manley 2.0 with the reverse rotated 145 degrees CCW) F15, and 1809 C-6 R1 EDS (Manley state 1.0 with the reverse rotated 100 degrees CCW) EF40 net VF30 for a planchet lamination on the face. Lot of 3 coins.

The 1803 is ex Coin Galleries Mail Bid Sale 11/5/1997:2660 (lot of 2)



LOT 53 1804 C-1 R3 VF30. Slightly sharper but nicely recolored long ago. Glossy medium chocolate brown and steel, and the retoning has matured and looks original now. Just a few trivial marks including a small spot of darker toning at the dentils left of the hair ribbon and two dull nicks at the top of the wreath. LDS, Manley state 2.0. The die crack and swelling at the top of the reverse are strong.

Ex Chris McCawley 5/1980-Don Valenziano 7/1992



LOT 54 1804 C-1 R3 F12. Glossy medium chocolate brown and steel. Smooth and free of notable marks. EDS, Manley state 1.0, with a fine die crack at the top of the reverse. Struck with the dies out of perfect axial alignment creating strong details on the right and weaker ones on the left.



LOT 55 1804 C-4 R5 VG8. A couple points sharper but there is minor roughness in the fields and a few small contact marks. The notable marks are a light rim bruise under the 4, another above the bust tip, and a nick at the right foot of the F in OF. Rather glossy medium chocolate brown and steel. MDS, Manley state 2.0, with fine die cracks on the reverse. The date and legends are complete and clear.



LOT 56 1804 C-5 R4 Spiked Chin VF30. Beautiful medium brown and light chocolate. Smooth and quite attractive with just a few contact marks. A diagonal nick in the field near the bottom of the neck and a few trivial rim nicks are the only defects. M-LDS, Manley state 5.0, with several die cracks on the reverse. The Spiked Chin feature is strong.



LOT 57 1804 C-6 R2 Spiked Chin VF20. Sharpness VF35 but covered with very fine porosity. No marks or verdigris, and the toning is an attractive frosty steel and olive brown. M-LDS, Manley state 10.0, with several cud breaks on the reverse. The Spiked Chin feature is clear but not strong.



Lot of 2

LOT 58 Pair of 1804 C-6 R2 Spiked Chin. Includes E-MDS Manley 2.5 VG10+ net VG8 for minor roughness and M-LDS Manley 10.2 F12. The first is decent, the second is nice. Lot of 2 coins.

The first is ex Rick Leonard-Lanny Reinhardt, M & G Auctions 8/19/1995:47 (lot ticket included)



LOT 59 1804 C-7 R4 Spiked Chin VG7. Glossy light to medium brown and steel. Smooth and attractive for the grade, just worn. The only marks are a few tiny rim nicks including one right of the date and a few more at the L in LIBERTY. M-LDS, Manley state 5.0, with a cud break at OF-A. The Spiked Chin feature is clear.



LOT 60 1804 C-8 R1 Spiked Chin EF40. Glossy medium brown with frosty golden tan in protected areas. No marks or roughness, just light wear on the devices. MDS, Manley state 3.0, with a fine die crack through LIBERTY. The Spiked Chin feature is clear.



EARLY CENTS AUCTIONS



LOT 61 1804 C-9 R2 VF35. Close to EF40 but there are a few microscopic contact marks and hairlines on the obverse, none visible without the aid of a strong glass. Frosty medium brown with darker steel brown on the highpoints. EDS, Manley state 1.0, with a very fine die crack through LIBERTY.



LOT 64 1804 C-11 R2 Plain 4 with Stems VF20. Glossy light chocolate brown. Smooth and very nice for the grade. The only notable marks are a couple small spots of silvery toning at the 4 in the date. MDS, Manley state 2.0, with a hint of swelling on the wreath ribbon loops.



LOT 62 1804 C-10 R1 VF20. Slightly sharper but lightly cleaned and nicely retoned glossy light olive and medium chocolate brown. The surfaces are smooth and the only mark is a minor rim bruise behind the head. Has the look of a higher grade. LDS, Manley state 3.0, with flowlined fields.



LOT 65 1804 C-12 R2 Crosslet 4 without Stems VF30. Sharpness near EF40 but there are some contact marks including a scuff in the hair below RT, another on the jawline, and one on the bust. These scuffs are light but they do alter the toning. The only other notable mark is a diagonal nick on the bust. Frosty medium steel brown and chocolate. MDS with flowlined fields and die clashmarks on the obverse.



LOT 63 1804 C-11 R2 Plain 4 with Stems VF20. Considerably sharper but there is a vertical scuff of hairlines on the obverse plus a lighter scuff of horizontal hairlines on the reverse, and the hairlines break the toning. Otherwise this piece is quite nice, free of roughness or notable marks. Frosty light to medium chocolate brown with lighter brown highpoints. Nicely struck EDS, Manley state 1.0.



LOT 66 1804 C-13 R1 Plain 4, Stemless VF35+. Sharpness close to EF45 but there are too many tiny contact marks for the higher grade, none notable or distracting. Frosty medium chocolate brown and steel with lighter brown and tan in protected areas. LDS, Manley state 2.0 late, with no dentils remaining visible on the obverse but before the narrow rim break over MER.

DOUBLE STRUCK 1804 C-13



LOT 67 1804 C-13 R1 Plain 4, Stemless VG7. Sharpness F15 with a patch of roughness at OF AMER with specks of verdigris and scratches in that area. Specks of verdigris are also visible in the field before the portrait. Otherwise the planchet is smooth with minor contact marks. Rather glossy steel brown and light chocolate. LDS. This piece is double struck with an offset between impressions of at least a half millimeter. The doubling is clearly visible on both sides. In addition there appears to be a brockage impression of the reverse on the obverse, but this may have been added later. Inspection recommended.



LOT 68 1805 C-1 R2- Small 5, Stemless AU50. Choice frosty light olive and steel brown with lighter brown and tan in protected areas. A beautiful piece with just a touch of friction on the highest points of the devices. The only marks are some extremely faint hairlines hidden in the hair left of the ear. EDS, Manley state 1.0, with a tiny rim cud connecting three dentils right of the fraction. The repunching at the top of the 5 is sharp and the reverse is rotated 25 degrees clockwise from the normal head-to-foot die orientation.

THE PARTRICK 1805 C-2 RARITY



LOT 69 1805 C-2 R5 Small 5 with Stems VG10. Sharpness VF20 but covered with uniform fine granularity. No verdigris and the only marks are two tiny nicks at the left top of the N in CENT. Clearly one of the sharpest examples known of this rare variety. MDS with a subtle bulge in the field before the portrait and weakness on HALF CENT. Light greenish olive. This piece has decent eye appeal in spite of the imperfect surfaces, and it comes with a great provenance.

Ex Walter Breen (who acquired it unattributed from Gimbel's in Philadelphia)-Jon Hanson 4/26/1967-Donald G. Partrick Collection (includes the personalized Partrick Collection envelope).



LOT 70 1805 C-3 R4 Small 5 with Stems VG8. Attractive glossy uniform light chocolate brown. Smooth and essentially void of marks, just evenly worn. LDS, Manley state 2.0, with strong swelling in the field before the portrait. A very nice lower grade example of this tough "Redbook" variety.



LOT 71 1805 C-4 R2- Large 5 with Stems VF20+. Significantly sharper but there are several contact marks on the obverse including a couple dull scrapes behind the head, a planchet flake on the cheek, and a small scrape on the lips. Glossy light olive brown and chocolate with frost in protected areas. Looks better than the assigned grade because the marks do not break the toning. LDS, Manley state 2.0, with a clear die crack through the bust tip.



EARLY CENTS AUCTIONS




LOT 72 1806 C-1 R1 Small 6, Stemless VF35. Frosty medium olive brown and steel. Smooth and attractive, just lightly worn. The only mark is a tiny planchet flake near the dentils before the face. MDS with flowlined fields and the reverse rotated 30 degrees clockwise.



LOT 73 1806 C-2 R4 Small 6, Stems G5. Glossy medium brown with some lighter brown toning in protected areas on the reverse thanks to an old cleaning. No roughness or notable marks. MDS, Manley state 2.0. Unevenly struck on the obverse: strong on the right, weaker on the left. The date is strong and the legends on the reverse are complete.

CERTIFIED 1806 C-3 RARITY



LOT 74  1806 C-3 R6 Small 6 with Stems PCGS VF Details Environmental Damage. A sharply detailed example that is covered with fine to moderate roughness, strongest on the obverse. No verdigris and the only notable mark is a very old scratch along the dentil tips over the second S in STATES. Dark steel and olive brown. The date and legends are complete and clear, although LIBERTY is relatively weak from the roughness. EDS, Manley state 1.0, before the die crack at ICA. The obverse is slightly misaligned to K-1, as usual for this variety. A very rare variety that is unknown in high grade; only one is known grading better than VG (the net Fine-15 example we sold as lot 85 in our 1/26/2014 sale of the fabulous Missouri Cabinet Collection). **Our grade is net G5** (although the net grade of the reverse is significantly better). The attribution is noted on the PCGS label. Certificate #35197.97/27790518

Ex McCawley & Grellman Auctions/Goldbergs 6/4/2017:411 (lot ticket included)



LOT 75 1806 C-4 R1 Large 6, Stems AU50. Close to mint state with some tiny contact marks on the obverse, mostly on the forehead into the hair and on the cheek. Lustrous light olive and bluish steel with generous traces of slightly faded mint red on both sides. A spot of darker toning at the dentils left of the date is a good identifying mark. LDS, Manley state 2.0. The repunching on the 6 is visible but not strong and the reverse is rotated 50 degrees clockwise. The bust tip and opposing leaves are not fully struck, as usual.



LOT 76 1807 C-1 R1 EF45. Frosty medium steel brown and chocolate with golden tan faded down from mint color in some of the protected areas. A very nice piece with just a touch of friction on the highpoints. The only notable marks are a couple tiny chips on the rim over ST in STATES and a shallow void under the C in CENT. LDS, Manley state 3.0. The reverse is rotated 15 degrees CCW.



LOT 77 1808/7 C-2 R3 Overdate 8 over 7 VF30. Sharpness EF40 or slightly better but there are a few light scratches on the obverse, strongest in the field off the tip of the nose. Otherwise the only marks are a tiny planchet chip in the field near the dentils right of the end of the nose and a couple tiny scrapes under AL in HALF. The surfaces are smooth, void of any trace of corrosion or verdigris. Glossy chocolate brown and steel with mint frost showing in protected areas. Nicely struck EDS, Manley state 1.0, with a faint die crack through the top of TY. The date and legends are strong and the overdate feature is obvious. An attractive example of this popular overdate variety in spite of the light marks.

Ex Raymond Gatzke Collection, Goldbergs 6/13/2021:56



LOT 78 1808/7 C-2 R3 Overdate 8 over 7 F12. Glossy light chocolate brown. No roughness or verdigris, only minor contact marks. A tiny chip on the rim off the bust, a small nick under the eye, a pinprick above the end of the nose, and a nick on the right foot of the F in OF are the notable marks. EDS, Manley state 1.0, before any die cracks on the obverse. The overdate feature is obvious.



LOT 79 1808 C-3 R1 F12+. Slightly sharper but there are some light scratches on the obverse, all blended into the toning. A fine horizontal scratch at the top of the eye is a good identifying mark. Glossy light chocolate brown. Nicely struck E-MDS, Manley state 2.0, with faint vertical die lines in the field before the portrait.



LOT 80 1809 C-1 R4 F12. Sharpness close to VF20 but there are some dull contact marks on the reverse, particularly at the M and R in AMERICA and on the end of the wreath stem. None of these marks catches your eye. Glossy medium chocolate brown with lighter brown in protected areas on the reverse. E-MDS, Manley state 2.0 early, with a fine die crack at MERICA.



LOT 81 1809 C-2 R3 F15+. Sharpness close to VF20, particularly on the reverse, but there is some dirt/crud caked around the devices on both sides. The only notable mark is a light diagonal nick below the earlobe. Slightly glossy dark olive brown with lighter steel brown toning on the devices. LDS, Manley state 4.0, with a narrow rim cud at F-A.



LOT 82 1809 C-3 R1 EF40. Sharpness close to mint state but covered with faint granularity visible only under magnification. There are traces of crud or verdigris at stars 4-6 but no notable marks. Medium chocolate brown and steel mottled with lighter golden tan on the reverse (possibly from an old cleaning). EDS, Manley state 1.0, with sharp dentils on much of the obverse.



LOT 83 1809 C-4 R2 Large 0 over Small 0 VF25. Considerably sharper but covered with fine to moderate granularity. No marks or verdigris. Dark olive brown and steel. EDS, Manley state 1.0. The Small 0 inside the Large 0 in the date is clear. A popular "Redbook" variety.



EARLY CENTS AUCTIONS



LOT 84 1809 C-4 R2 Large 0 over Small 0 VF25. Another example of the 1809 Small 0 inside Large 0 variety, but this one is smooth. Glossy olive brown and steel with traces of lighter brown in protected areas. Just a few small marks including a rim bruise off the end of the wreath stem. EDS, Manley state 1.0. The Small 0 inside Large 0 feature is sharp.



LOT 86 1809 C-6 R1 VF25. Sharpness at least EF40 but recolored glossy light olive, tan, and chocolate brown. The only marks are a few dull, light scratches on the reverse but none of these marks is visible to the unaided eye. LDS, Manley state 6.0, with a narrow but strong rim cud over star 8.



LOT 85 1809/6 C-5 R1 Overdate 9 over Inverted 9 VF35. Sharpness close to EF40 but there are a few contact marks including a dull diagonal nick at the left top of the L in LIBERTY. No roughness or verdigris. Frosty light chocolate brown with lighter brown and tan in protected areas on the reverse. MDS, Manley state 2.0. The lump under the second A in AMERICA is clear and the 9 over Inverted 9 (often called a 9 over 6 overdate) is clear.



LOT 87 1810 C-1 R1 VF20. Sharpness VF35 with traces of microscopic corrosion on both sides. A patch of fine roughness at the nose is the only area of corrosion visible to the unaided eye. The best identifying mark is a tiny pit or chip near the dentils over the head. M-LDS with the reverse rotated 40 degrees CCW. The fields are flowlined but the repunching at the left bottom of the 0 in the date is still visible.

TERMINAL STATE 1811 C-1



LOT 88 1811 C-1 R4 F15. Sharpness near VF30 but covered with uniform fine granularity under slightly glossy dark olive brown and chocolate toning. No verdigris and the only mark is a dull horizontal scratch across the upper part of the neck. LDS, Manley state 5.0, with a large cud break connecting stars 1-4 to the rim.



LOT 89 1811 C-1 R4 VG7. Several points sharper but there are a half dozen old scratches hidden in the toning on the obverse. The planchet is covered with very fine roughness but there is no verdigris and the eye appeal is decent. Slightly glossy chocolate brown and steel. Terminal die state with a large cud break at stars 1-4, Manley state 5.0. The date is strong.



LOT 90 1811 C-2 R3 F12+. Rather glossy medium steel brown blending to chocolate in protected areas. No roughness, only a few contact marks. The notable marks are a small nick right of the nostril and three dull rim nicks at stars 8-10. The three rim nicks do catch your eye; otherwise this piece would rate a slightly higher grade. EDS, Manley state 1.0, with die clashmarks behind the head.



LOT 91 1825 C-1 R3 VF30. Glossy light olive and steel brown. No roughness, just a few trivial nicks in the field before the face. LDS, Manley state 3.0, with a die crack on the obverse and clashmarks on the reverse. The reverse is rotated 135 degrees CCW.



Lot of 3

LOT 92 Trio of Half Cents 1825 & 1828. Includes 1825 C-1 R3 LDS (Manley 3.0 with the reverse rotated 140 degrees CCW) EF40 net VF25 for recoloring, 1825 C-2 R1 MDS Manley 2.0 AU50 net VF30 for recoloring, and 1828 C-3 R1 LDS Manley 4.0 VF35 net F15 for granularity and recoloring. Lot of 3 coins.



LOT 93 1825 C-2 R1 EF40. Glossy light olive and steel brown. Mint frost shows in the protected areas and this piece has very nice eye appeal in spite of a few marks. The notable marks are a dull diagonal scratch on the bust, a lighter scratch under OF, and a hairline scratch at the H in HALF. MDS, Manley state 2.0, with a weak end on the wreath stem.



LOT 94 1825 C-2 R1 VF20. Five points sharper with a few too many tiny nicks for the higher grade, none notable. Glossy chocolate brown and tan. EDS, Manley state 1.0, with a strong end on the wreath stem.



EARLY CENTS AUCTIONS



LOT 95 1826 C-1 R1 EF45. Frosty light brown with a couple puffs of darker brown toning on both sides. Just a few small contact marks including a trio of ticks close off the end of the nose. LDS, Manley state 5.0. The die lines from the hair over LI are gone.



LOT 99 1826 C-2 R3+ EF40. Glossy light olive and steel brown with peeps of frosty golden tan in some protected areas. Mint frost covers the protected areas, especially on the reverse. Just minor contact marks on the obverse, none notable. MDS, Manley state 2.0, with die clashmarks on the reverse.



LOT 96 1826 C-1 R1 EF40. Ten points sharper but expertly recolored glossy chocolate brown. Smooth and quite attractive. Sharply struck E-MDS, Manley state 2.0.



LOT 100 1828 C-1 R1 AU50. Glossy light to medium brown with a splash of dark reddish brown toning (not carbon) at star 9. A small planchet void on the edge above star 7 is the only other mark worthy of mention. The fields are hard and slightly reflective. MDS, Manley state 2.0.



LOT 97 1826 C-1 R1 EF40. Ten points sharper but recolored frosty light olive and golden tan with sea-green overtones. Lustrous and attractive in spite of the retoning. The only defects are some very shallow low spots on both sides from die clogging, particularly in the center of the obverse. MDS, Manley state 3.0. The reverse is rotated 70 degrees CCW from the normal head-to-foot die orientation.



LOT 101 1828 C-1 R1 NGC graded AU58. Chocolate brown and steel with lots of underlying reddish tan faded down from mint color. There are some light contact marks on the cheek; otherwise quite nice. Sharply struck EDS, Manley state 1.0. **Our grade is EF45+, close to AU50.** The attribution is noted on the NGC label. Certificate #2286302-051

Ex McCawley & Grellman Auctions/Goldbergs 9/14/2008:282 (lot ticket included)

Ex 2012 EAC Sale, lot 51



LOT 98 1826 C-1 R1 VF35. Glossy light to medium chocolate brown and steel. No defects, just light, even wear on the devices. LDS, Manley state 5.0.

Ex 2014 EAC Sale (as EF45, lot ticket included)



LOT 102 1828 C-2 R1 12-Star Obverse AU50. Very close to mint state but recolored frosty reddish steel brown and light olive with faded red in protected areas, especially on the obverse. The only marks are a half dozen tiny specks of lighter golden toning around star 9. LDS, Manley state 3.0. Looks choice mint state to the unaided eye.



LOT 103 1828 C-2 R1 12-Star Obverse VF25. Slightly sharper but there are faint hairline scratches on the portrait, none visible without the aid of strong magnification. Glossy medium brown and light chocolate. A small puff of darker chocolate toning right of star 7 is a good identifying mark. Nicely struck with good eye appeal. MDS, Manley state 2.0.

MOSTLY RED 1828 C-3



LOT 104 1828 C-3 R1 PCGS graded MS63 Red & Brown, CAC Approved. Lustrous mint red fading to light steel brown with 75% of the obverse and 85% of the reverse showing original mint color. Close to qualifying for an "RD" designation. A splash of bluish steel toning at stars 9-11 can help identify this piece. M-LDS, Manley state 3.0. Our grade is MS63+, very close to MS64. Certificate #1148.63/10188952



LOT 105 1828 C-3 R1 VF35. Slightly sharper with faint hairlines on the obverse, none visible to the unaided eye. Scratch under the 1 in the date is the only notable mark. The reverse is choice. Frosty light to medium brown and steel. EDS, Manley state 1.0.



LOT 107 1829 C-1 R1 EF45. Frosty light brown and tan with a puff of slightly darker toning at NIT where there are a couple specks of verdigris. The only other marks are a tiny nick left of the earlobe and a nick-like planchet chip right of the F in OF. MDS, Manley state 2.0.



LOT 106 1829 C-1 R1 AU55. Lustrous bluish steel and light olive. Satiny and very attractive with just a hint of rub on the highest points of the devices. The only notable mark is a tiny scratch near the hair left of star 10. Has solid mint state eye appeal. E-MDS, Manley state 2.0.



LOT 108 1831 Original ELECTROTYPE COPY EF45. Mint state sharpness but cleaned bright and just starting to retone. No marks or other defects. There is no undertype base metal visible, not even on the rim. A nice hole filler for this very tough date.



EARLY CENTS AUCTIONS



LOT 109 1832 C-1 R2 VF30. Sharpness EF45 but there are fine scratches on the cheek and neck. Lightly cleaned and retoned frosty light olive with lighter brown and tan in protected areas on the reverse. MDS.



LOT 110 1832 C-2 R2 AU50. Glossy light brown with frost in protected areas. Essentially flawless with just a touch of friction on the highest points of the devices. Sharply struck LDS, Manley state 3.0, with a fine die crack at TE in STATES.

Ex Coin Galleries Mail Bid Sale 11/13/1991:3249 (as C-1)



LOT 111 1832 C-2 R2 EF40+. Glossy light to medium brown mixed with some chocolate brown toning on the reverse. Mint frost shows in protected areas. The only mark is a tiny rim nick over star 8. Close to EF45. E-MDS, Manley state 1.0.



LOT 112 1832 C-3 R2 EF40+. Sharpness near mint state but there are areas of dark olive brown toning on both sides, and a couple of those dark areas contain microscopic traces of fine carbon. Most of the planchet is smooth with attractive frosty light brown toning. Sharply struck MDS with die rust evident on the reverse.



LOT 113 1833 C-1 R1 EF40+. Frosty light brown mixed with some darker chocolate toning. Smooth but there are a few contact marks including two small but fresh ticks under the 18 and a fine scratch that meanders through HA in HALF down to the N in CENT. Otherwise worthy of a higher grade. EDS, Manley state 1.0, with a single set of die clashmarks on the reverse.



LOT 114 1834 C-1 R1 AU50. Frosty olive and steel with hints of very faded mint color in some of the protected areas. Possibly dipped long ago but the eye appeal is excellent. The only marks are a couple very light scratches over the head.



LOT 115 1835 C-1 R1 AU55. Lustrous light olive and steel brown with generous traces of faded underlying mint red showing on the obverse. The only notable defect is a small patch of crud nestled between star 1 and the dentils. Looks mint state but there is a touch of rub on the highest points of the devices. LDS, Manley state 2.0, with die clashmarks on both sides. The repunching on the 5 is still clear.



LOT 116 1835 C-2 R1 AU55+. Lustrous light chocolate and bluish steel. No defects, just a touch of friction on the devices. LDS, Manley state 3.0, with a fine die crack arcing across the upper part of the reverse.

Ex Tom Reynolds 5/20/1995



LOT 117 1835 C-2 R1 EF45. Frosty light brown with darker steel brown toning on the highpoints. The only notable marks are a few small puffs of darker olive toning at the D in UNITED and OF AM. LDS, Manley state 3.0, with a fine die crack curving across the upper half of the reverse. The repunching on the 5 is clear.



LOT 119 1837 Half Cent Token Low-49 Rulau HT-73 R2 EF45. Closer to mint state but there is a narrow planchet lamination that meanders through U. S. and the 18 to the rim at both ends. Otherwise quite nice with frosty light brown toning and just a hint of friction on the highpoints.

CERTIFIED PROOF 1836 ORIGINAL



LOT 118 1836 Proof Original Breen 1-A R5 NGC graded PF64 Brown. Medium brown and light chocolate with darker olive brown toning on the cheek. The fields are slightly reflective, the mirrors subdued a bit by a thin layer of natural oxidation, but there are no hairlines. The darker toning on the cheek does catch your eye and there are a few tiny spots of carbon on the obverse including one on the left side of star 9. A decent example of the original strike of this proof-only issue. Our grade is Proof-60+. The attribution as an Original strike is noted on the NGC label.



LOT 120 1837 Half Cent Token Low-49 Rulau HT-73 R2 VF35+. Choice glossy light brown with medium brown toning on the highpoints. Smooth and free of notable defects, just lightly worn on the devices.

Ex Stack's 12/2/1982:40



LOT 121 1849 C-1 R2- EF45+. Frosty light brown with a puff of reddish brown toning between star 8 and the bun. No defects, just light friction on the highpoints and no notable marks. EDS, Manley state 1.0. There is clear doubling on the date and the fine die lines at NI in UNITED are sharp.



A MISSOURI CABINET 1850 C-1



LOT 122 1850 C-1 R2- PCGS graded AU Details Cleaning. Sharpness very close to mint state but cleaned and beginning to mellow to light bluish steel brown, mostly on the highpoints. No spots, stains, or contact marks. Sharply struck EDS. **Our grade is AU58** sharpness net AU50 for the cleaning. The net grade may improve if properly retoned. Comes from two very famous collections. The attribution and Missouri Cabinet provenance are shown on the PCGS label. Certificate #35321.92/27563992



Ex Col. E. H. R. Green 6/8/1936-Green Estate (appraised by F. C. C. Boyd for the estate at 25 ¢ on 8/9/1937)-sold in April 1943 for 20 ¢ to the Newman/Johnson partnership-Eric P. Newman-EPNNES November/December 1980-Missouri Cabinet, McCawley & Grellman Auctions/Goldbergs 1/26/2014:200



LOT 123 1850 C-1 R2- EF45+. Slightly sharper but there is a minor rim bruise off the end of the wreath stem. Otherwise this piece is choice with great eye appeal. Glossy medium brown. Sharply struck EDS.



LOT 126 1854 C-1 R1+ AU55. Frosty steel brown and light chocolate. A small spot of reddish brown toning in the center of the cheek and another over star 2 are the notable marks. E-MDS, Manley state 1.0.



LOT 124 1851 C-1 R1 EF45+. Frosty light olive and steel brown. Very attractive with trivial contact marks and a touch of rub on the highpoints. MDS. The repunching at the second 1 is clear.



LOT 127 1854 C-1 R1+ AU50. Frosty tan and light brown. Sharply struck with just a hint of friction on the highpoints. A puff of darker toning in the field behind the main curl is the only mark. EDS, Manley state 1.0.



LOT 125 1853 C-1 R1 AU58. Frosty light to medium steel brown with a few peeps of faded mint color remaining on the reverse. Satiny and quite attractive. The only mark is a spot of slightly darker toning below the end of the wreath stem. Looks mint state. MDS.

Ex McCawley & Grellman Auctions/Goldbergs 1/2012:113 (lot ticket included)



LOT 128 1854 C-1 R1+ EF45. Sharpness close to mint state but recolored frosty olive brown with reddish steel brown and mahogany undertones. Sharply struck with fine repunching visible on the 4. M-LDS, Manley 2.0. The dash off the left base of the 1 is visible and a dull lump shows on the upper part of the 1 in UNITED.

Ex Tom Reynolds 5/20/1995



LOT 129 1855 C-1 R1 PCGS graded MS63 Brown. Lustrous light bluish steel with peeps of faded mint red showing on the reverse. A scuff of tiny scratches on the rim left of the date is the only notable mark. MDS. **Our grade is AU58**, but this piece has solid mint state eye appeal. Certificate #1233.63/38235887



LOT 130 1855 C-1 R1 AU55. Choice light brown with medium brown on the highpoints. Mint frost covers the fields and protected areas and this piece has mint state eye appeal. MDS. Nicely struck for this date with most of the dentils present on both sides.

Ex Stack's 9/4/1991:41



LOT 131 1855 C-1 R1 AU50. Frosty light steel brown with traces of faded mint red showing in protected areas on the obverse. Close to mint state sharpness but faint hairlines from a light cleaning cover the obverse. The only marks are a spot over star 3 and a rim nick at star 7. MDS.

Ex McCawley & Grellman Auctions/Goldbergs 2/10/2008:976 (lot ticket included)



LOT 132 1855 C-1 R1 EF45. Sharpness close to mint state but there is a patch of darker toning mixed with very fine carbon between stars 5 & 6. Glossy medium brown with frost in protected areas. MDS.



LOT 133 1855 C-1 R1 EF40. A lustrous mint state piece that unfortunately has a relatively strong vertical scratch in the field before the portrait. There are a few additional contact marks on the portrait but they are not so significant. MDS with fine flowlines in the fields. Frosty light olive and steel brown with traces of mint red showing on both sides.



LOT 134 1856 C-1 R2 AU58. Frosty light to medium brown with golden tan in protected areas on the obverse. Sharply struck and the only mark is a tiny tick on the lower right of the 6. MDS, Manley state 2.0, with a fine die line from the leaf below ES in STATES. The small dash off the right top of the 6 is clear.

Ex Tom Reynolds 3/1/1997



LOT 135 1856 C-1 R2 AU55. Frosty light steel brown. Just a hint of rub on the highest points and trivial ticks scattered over both sides, none notable. LDS, Manley state 2.0.



EARLY CENTS AUCTIONS



LOT 136 1857 C-1 R2 AU50. Frosty light olive and tan with traces of faded mint red showing in protected areas on both sides. Looks mint state. The only marks are a few small, barely visible ticks on the face. MDS.



LOT 137 1857 C-1 R2 VF30. Sharpness AU50 and quite attractive to the unaided eye, but this piece has been whizzed and expertly retoned medium brown and chocolate. No marks or other defects. This piece has mint state eye appeal; that's why you should always use a glass. EDS.

LARGE CENTS



LOT 138 1793 S-8 R3 Wreath Cent, Vine & Bars Edge NCS VF Details Corroded. Sharpness F15 but covered with fine to moderate granularity. The roughness at ES in STATES is fairly strong but there are no marks or verdigris. Dark steel brown and chocolate. MDS. The date and legends are clear except for weakness on that second S in STATES. Our grade is net G6. Certificate #5102433-001

SHARP 1793 S-9



LOT 139 1793 S-9 R2 Wreath Cent, Vine & Bars Edge VF35. Sharpness EF45, even better on the reverse, but this cent was cleaned and has only partially retoned. The obverse is olive brown and steel woodgrained with some lighter golden tan; the reverse is a more uniform reddish light chocolate brown. Mint frost shows in the fields and protected areas on the reverse. The surfaces are smooth and there are no planchet flaws. The only marks are a tiny tick under the B in LIBERTY and some trivial ticks around the rims including one left of the lowest strand of hair and some more over ED in UNITED. EDS, Breen state I, before any die cracks. A sharp Wreath Cent that deserves a proper retoning.

Ex Jonathan Kern



LOT 140 1793 S-13 Liberty Cap **ELECTROTYPE COPY AG3**. Glossy medium brown and light chocolate. A smooth cent but there are a half dozen small digs on the reverse, mostly around the T in CENT. In addition there is an added clip or test mark on the rim off the chin and the reverse is nearly upset. The date is weak but readable. This piece could pass as genuine if not for the seam on the edge and the lack of edge lettering (obvious signs pointing to an electrotype).

RARE S-16 LIBERTY CAP



LOT 141 1793 S-16 R6 Liberty Cap **PCGS Good Details Planchet Flaw**. Sharpness stronger on the obverse than the reverse, but the surfaces are granular and there is an ugly planchet lamination at the date and bust tip. Part of the 7 is visible and LIBERTY is readable but the rest of the date and nearly all of the reverse are gone. Fortunately there are enough of the border beads above LIBERTY still visible (although weak) to attribute the variety. Early die state with a strong E in LIBERTY. **Our grade is net Basal State-1**. The attribution is noted on the PCGS label. Certificate #35498.93/36460487

Acquired unattributed on eBay 11/12/2018 (as Head of 1793)



LOT 142 1793 Electrotype Copy of a Smith Counterfeit **F12**. Slightly sharper, especially on the reverse, but there are a few light scratches that break the toning on the obverse. Glossy medium steel brown and light chocolate. The edge is not lettered; rather there are significant traces of vertical reeding. The seam around the edge is obvious and there is a test mark that shows underlying base metal. A copy of a popular copy!



EARLY CENTS AUCTIONS



LOT 143 1794 S-17a R5- Head and Edge of 1793 G6. Several points sharper but covered with fine roughness mixed with parallel planchet striations (which are all too common on this variety). No verdigris, and the only notable contact mark is an old horizontal scratch at the top of the reverse. Slightly glossy reddish chocolate brown with lighter brown toning on the devices, probably from a light cleaning. LIBERTY is only partially visible but the date and remainder of the legends are easily readable. Probably MDS. Graded VG10 net G5 by Noyes, his photo #34319. Comes with a nice provenance.

Ex Al Bonard 8/1966-Jackson Storm 8/1985-Robert E. Matthews, Superior 5/1989:140-Paul Langseth 8/1990-Jim Long, McCawley & Grellman Auctions 1/9/1993:27-Dan Trollan 4/22/2010-Terry Denman-Early Cents Auctions 1/22/2021:302 (includes the last two lot tickets)



LOT 144 1794 S-19a R5+ Head and Edge of 1793 PCGS Fine Details Graffiti. Slightly glossy dark chocolate brown and steel with lighter steel brown toning on the highpoints of the devices. The surfaces look smooth to the unaided eye but a glass reveals uniform extremely fine roughness covering both sides. No verdigris and the only marks are a few very light hairline scratches hidden in the toning on the obverse (not to be confused with "Graffiti") and a minor rim bruise right of the second S in STATES. The date is complete and easily readable and the legends are complete except for weakness at TATES OF due to the usual weaker strike in that area. The edge lettering is complete and strong (including the downward-pointing leaf following DOLLAR). MDS, Breen state II, with subtle bulges in the field below the cap. Graded F12 net VG7 and tied for CC#13 in the Noyes census, his photo #32214. Del Bland says VG8 and tied for CC#10 in his census. **Our grade is VG10+ net VG8.** Comes with a very nice provenance. The attribution is noted on the PCGS label. Certificate #35516.98/39472156

Ex W. E. Johnson 1958-R. E. Naftzger, Jr., New Netherlands Coin Co. 11/14/1973:341 (as VG8)-Dr. Edward R. Bush 3/29/1976-Philip Van Cleave, Kagin's Numismatic Auctions #340 1/1986:5022-R. S. Brown, Jr., Superior 1/27/1996:26-Chris McCawley-Walter J. Husak 5/6/2006 (where the final price was decided by a coin flip)-Jon A. Boka-Dr. Mark D. Cadden Collection, Goldbergs 9/13/2020:4 (includes the Cadden collection envelope and last lot ticket)



LOT 145 1794 S-19b R4 Head of 1793, Edge of 1794 G5. Several points sharper, especially on the reverse where the high rim protects the devices, but both sides have been burnished and a small dig or pit over the pole has been removed. Traces of microscopic roughness remain visible in protected areas while the highpoints are very smooth. A pinprick on the pole near the neck is the best identifying mark. No verdigris. Retoned glossy chocolate and olive brown. MDS, Breen state II, with swelling in the field under the cap. The date is weak but easily readable and the legends are complete although STATES OF is relatively faint. The edge lettering is bold.

Ex Robert W. Holmes, Jr.-Shawn Yancey 5/19/2014-Dr. George Wilkins, Goldbergs 1/27/2019:228 (lot ticket included)



LOT 146 1794 S-20 R5 Head of 1793, Edge of 1794 PCGS Poor-1, CAC Approved. Slightly glossy chocolate and dark steel brown. Smooth on the highpoints, slightly rough elsewhere. No verdigris and a rim bruise at K-3 on the obverse is the notable mark. The date is weak but easily readable and the edge lettering is strong. More detailed on the obverse than the reverse. **Our grade is Fair-2 on the obverse, Basal State-1 on the reverse.** The D. Brent Pogue Collection provenance is noted on the PCGS label. Certificate #1362.01/38505012

Ex Pogue Collection, Stack's/Bowers lot 7384 (lot ticket included)



LOT 147 1794 S-22 R1 G6. Sharpness F15 but pitted and eroded leaving the appearance of cud breaks on the reverse (which they certainly are not). About a dozen significant pits show on both sides but none contains any verdigris. The only contact marks are a few minor rim bruises, none notable. The toning is an attractive and slightly glossy medium steel brown blending to olive brown in protected areas. The date is clear and the legends are readable. E-MDS with just a hint of a "Mound" between the upper leaves of the wreath.

Ex C. F. Gordon, Jr. in 1979



LOT 148 1794 S-24 R1 PCGS graded XF40. Glossy steel brown and light chocolate with slightly darker steel brown on the highpoints.. The holder is a bit scuffed up but the coin is nice. Just a few minor contact marks; the only notable one is a rim bruise off the chin. M-LDS, Breen state V, with die cracks and rust on the obverse and swelling inside the wreath that weakens NT in CENT. **Our grade is VF25.** Certificate #901374.40/42509059

BREEN PLATE COIN



LOT 149 1794 S-24 R1 PCGS VG Details Environmental Damage. Dark steel brown and chocolate with a few splashes of darker olive brown in protected areas. The surfaces are covered with fine to moderate roughness that weakens the date and parts of the legends, but the date remains readable. This cent is plated on page 118 in the Breen encyclopedia to show a possible terminal die state for the variety. The swelling in the center of the reverse is severe and there is an obvious cud-like area at the bottom of the reverse that sure has the look of a cud. But your cataloger believes this "cud" is a result of a planchet flaw. The rest of the reverse is covered with parallel striations consistent with a planchet delamination. That, combined with the low grade and corrosion, make die state certainty an elusive goal. Close inspection is recommended. The Heck Collection provenance is noted on the PCGS label. Certificate #901374.97/36460486

Ex John D. Wright (who acquired it unattributed at the Marquette Mall in Michigan City, IN, in 2/1975) 1/2005-Chuck Heck Collection, McCawley & Grellman Auctions/Goldbergs 2/12/2017:252



EARLY CENTS AUCTIONS



LOT 150 1794 S-25 R3 PCGS graded F15. Glossy light olive and chocolate brown with some subtle puffs of darker olive brown toning in the obverse fields. The surfaces are smooth except for a bit of extremely faint roughness around ERICA to the denominator. No verdigris. The notable marks are some hairline scratches lost in the toning on the portrait, a rim nick or planchet chip off the right top of the Y, and a small flake near the rim below the right edge of the fraction. E-MDS, Breen state II, with a single set of die clashmarks. The dies were axially misaligned (the die faces were not perfectly parallel) causing minor weakness in the dentils before the portrait and the opposing legend at ERICA to the fraction. Everything else is complete and clear. **Our grade is F15 net F12+.** The attribution is noted on the PCGS label. Certificate #35540.15/39472157

Ex Dr. Mark D. Cadden Collection, Goldbergs 9/13/2020:11 (includes the Cadden collection envelope and lot ticket)



LOT 151 1794 S-25 R3 VG8. Sharpness F15 or better but burnished for an unknown reason because the surfaces appear to have been smooth anyway. Retoned glossy dark olive brown and steel with lighter steel brown toning on the highpoints. MDS with die clashmarks on both sides but no die crack on the reverse. Softly struck along the bottom edge of the reverse but everything else is nicely impressed. The date is strong.

Ex R. J. Rudolph Collection, Goldbergs 2/17/2020:638 (lot ticket included)



LOT 152 1794 S-26 R2 VG8. Sharpness F12 but recolored dark steel brown and chocolate with traces of lighter brown in protected areas on the reverse. Most of the planchet is smooth but there are two distracting voids in the field over the bust and a smaller one off the end of the nose. A few smaller voids show on the reverse rim with one more over the T in CENT. LDS, Breen state VII, with two strong die cracks on the reverse. In addition the reverse is rotated 30 degrees clockwise. The date and legends are complete and strong.

Ex 2019 EAC Sale, lot 78 (lot ticket included)



LOT 153 1794 S-27 R5 G6. A few points sharper, especially on the obverse, but there are numerous light scratches on both sides, all blended perfectly into the rather glossy dark olive and steel toning. The only other notable marks are a small dig between the tops of the 9 & 4 in the date and a nick on the lower edge of the jaw over the throat. MDS, Breen state II, showing delicate but obvious waves in the field from the chin to the right and from the middle curls to the rim at left. The date is bold and the legends are complete except for weakness on the denominator.

Ex Goldbergs 2/18/2018:305 (lot ticket included)

S-28 ON LARGE PLANCHET



LOT 154 1794 S-28 R2 ANACS graded VG8. Slightly glossy greenish olive blending to medium olive brown in protected areas. Probably recolored. The strike is odd, possibly the result of multiple strikes, and the die state appears to be late and a bit mushy. The diameter of the planchet is a full 30.0 millimeters (vs the standard 28.6 mm). Multiple impressions could account for the large diameter and distorted details. The weight is 199.5 grains which is in line with the 208-grain standard for unworn planchets. Worth a close look. **Our grade is VG7.** The attribution is noted on the ANACS label. Certificate #50452011000



LOT 155 1794 S-29 R2 NGC graded AG3. Glossy medium brown and light chocolate. Smooth, just worn. A tiny pinprick left of the cap is the only notable mark. The 17 is gone but the 94 is readable. **Our grade is AG3.** The attribution is noted on the NGC label. Certificate #4911355-006





S-31 WITH CLIPPED PLANCHET



LOT 156 1794 S-31 R1 PCGS graded VG8 Mint Error, Clipped Planchet. End-of-Strip Planchet Clip/Blundered Edge Letters. Glossy light to medium brown. The obverse is slightly sharper than the reverse, as usual. Smooth surfaces and no notable marks. Struck on a planchet with a rather large straight-edge clip (end of strip) at K-7 to K-9 on the obverse and over D-STAT on the reverse. This clip affected the Casting machine which couldn't grip the planchet evenly in the clipped area, the result being a very large space between HUNDRED and FOR. The clip is positioned between the two words, and the edge lettering opposite the clip (L A R O) is missing (and would have been jammed together anyway due to the slippage). A decent lower-grade example of a straight-edge clip error. The blundered edge lettering is a bonus (which unfortunately is not visible in the slab). **Our grade is G6.** The Mint Error and Holmes Collection provenance are noted on the PCGS label. Certificate #E901374.08/18723458

Ex Doug Bird 5/10/2000-Michael Arconti, McCawley & Grellman Auctions/Superior 7/27/2003:6-Daniel W. Holmes, Jr., McCawley & Grellman Auctions/Goldbergs 9/19/2010:371-Shawn Yancey 12/27/2010-Jack Young (includes the Holmes collection envelope and both lot tickets)

THE NAFTZGER-BROWN-RASMUSSEN S-32



LOT 157 1794 S-32 R2 VF25. Sharpness EF40 but covered with fine granularity. No verdigris but there are some old, light hairline scratches on the obverse including several horizontal ones at the bottom of the neck. The obverse is medium chocolate brown; the reverse is a darker shade of olive brown. LDS, Breen state V, with strong die cracks and obvious clashmarks on the reverse. Struck with the obverse die misaligned to K-3, as usual on this variety. Graded AU50 by NGC (NGC label #508630-001 included, and it shows the attribution and Rasmussen provenance). PCGS says XF Detail with Environmental Damage (PCGS label included). Bland says VF35. Noyes says EF40 net VF25, his photo #25263. Heritage assigned an EAC grade of VF35. Obviously there are a wide variety of opinions on this one. What is certain is that this piece is sharp and it comes with a very nice provenance.

Ex R. E. Naftzger, Jr.-Denis Loring 1973-R. S. Brown, Jr., Superior 9/30/1986:43 (as VF35)-Wesley A. Rasmussen, Heritage Auctions 1/13/2005:3038 (as VF35)-unknown-Heritage Auctions 1/8/2020:3082 (includes the Brown collection envelope and all three lot tickets)

TERMINAL STATE S-34



LOT 158 1794 S-34 R5+ PCGS graded Fair-2. Slightly glossy steel and chocolate brown. A bit dull but there are no significant issues worthy of mention. The date is quite weak but still readable. Rare TDS with a strong cud break at the top of the cap. **Our grade is Fair-2.** The attribution is noted on the PCGS label. Certificate #35567.02/40124764



Ex Robert Dunfield 2009-Shawn Yancey 9/11/2009-Jack Young-Jim Rehmus-Bob Holmes 1/27/2011-Steve Katz



LOT 159 1794 S-35 R5 VG10. Sharpness VF30 with light to moderate corrosion on the left side of the obverse and all of the reverse. Both sides show crusted hard verdigris in the roughened areas. Otherwise the only mark is a small rim bruise at OF. Reddish chocolate brown with lighter brown toning on the highpoints. MDS, Breen state V, with a clear die crack to the top of the head but before the crack to the left side of the cap. The date and legends are all strong. Struck with the reverse rotated 30 degrees clockwise. A rare variety that unfortunately tends to be plagued by surface problems, but this is one of the sharper examples known.



LOT 160 1794 S-35 R5 PCGS graded G4. Slightly glossy dark chocolate brown and steel. Mostly smooth but there is very fine roughness in the fields and protected areas. The only mark is a rim bruise at the E in UNITED. Later die state with a strong vertical die crack through the E into the head. The date is faint but readable in the right light. **Our grade is AG3.** Certificate #901374.04/16593931



Ex R. S. Brown, Jr. (via Del Bland) 8/1989-Doug Bird-Gary M. Ruttenberg-Dan Demeo 3/5/2010-Shawn Yancey 3/15/2010-Jack Young



EARLY CENTS AUCTIONS



LOT 161 1794 S-41 R3 VG8. Sharpness near F12 but lightly cleaned leaving the highpoints light brown with darker chocolate brown in protected areas. Most of the planchet is smooth but there is a patch of fine porosity near the rim before the face. There are a couple nicks on the neck and one more on the cheek plus a small rim nick at the second S in STATES. MDS, Breen state IV late, with a die crack through the D in UNITED into the wreath and swelling that weakens ON and CEN. The date and remainder of the legends are strong.



LOT 162 1794 S-43 R2 NGC graded F15. Glossy dark chocolate and olive brown. No roughness; the only notable marks are a small planchet chip or poke at the F in OF and a minor rim bruise at the second A in AMERICA. EDS, Breen state I. The obverse die is misaligned to K-3. **Our grade is VG10.** Certificate #4488062-0001

Ex Heritage Auctions 8/2019:7017 (lot ticket included)



LOT 163 1794 S-44 R1 VG8. Sharpness VF20 but covered with fine to moderate granularity, strongest on the reverse. Dark olive with a thin dark green patina. The only marks are a couple rim nicks right of the Y in LIBERTY. M-LDS, Breen state IV, with die cracks on both sides. The date and legends are complete and easily readable.

Ex Jack Robinson 3/1985-Colonel Steven K. Ellsworth-Heritage Auctions #1299, lot 7100 (includes the Ellsworth envelope and lot ticket)



LOT 164 1794 S-44 R1 ANACS graded G6. Dark olive brown with lighter brown toning on the devices. The date is weak but readable as are most of the legends. Minor roughness covers the fields and protected areas but there are no marks. **Our grade is AG3.** The attribution is noted on the ANACS label. Certificate #61223471100



LOT 165 1794 S-45 R5+ VG7. Several points sharper but there are obvious planchet voids/delaminations on both sides including a horizontal one from the shoulder into the hair, one at the top of the cap, and another at the top of the wreath. Rather glossy olive brown and steel. LDS, Breen state II, with a die crack at IC into the wreath. The date and legends are complete and easily readable except for weakness on the denominator. Comes with a nice provenance for a relatively modest cent.

Ex F. C. C. Boyd-Judge Thomas L. Gaskill-Elliott Landau (via Richard Picker)-unknown-Stack's Bowers 11/13/2019:13027 (lot ticket included)



LOT 166 1794 S-46 R3 F15. Slightly sharper but there are two small nicks or chips on the cheek and another on the jaw at the throat. Otherwise smooth with only trivial marks. Glossy light greenish olive brown. EDS, Breen state I, with the usual die crack to the bust. The date and legends are all strong. Graded VF25 net F15 in the Noyes census, his photo #36841.

Ex J. R. Frankenfield, McCawley & Grellman Auctions/Superior 2/17/2001:245-Terry Denman, 2020 EAC Sale, lot 127 (includes the Denman collection envelope and EAC Sale lot ticket)

STOLEN S-51 IS RECOVERED



LOT 167 1794 S-47 R4 F12. Glossy chocolate brown and steel. The only marks are a dull nick in the field before the eye and a tiny rim bruise just right of the fraction. MDS, Breen state II, with fine die cracks on the reverse.

Ex Tom Reynolds FPL 2013



LOT 168 1794 S-49 R2 VF30. Sharpness near EF45 but covered with microscopic nicks and extremely fine porosity. In addition there are several light rim bruises, strongest on the reverse. The most notable marks are a light rim dent right of the F in OF and a similar one over the M in AMERICA. Recolored frosty olive brown and steel with peeps of golden tan at the dentils near the cap. M-LDS, Breen state II late. The die crack down through the E in LIBERTY is strong and the radial wave to the nose is just starting to show. Looks better than it might sound. Called AU50 net VF35 and tied for CC#10 in the Bland census. Noyes says EF45 net VF30 and tied for CC#8 (no photo available in his census). Comes with a nice provenance.

Ex Charles M. Williams, Numismatic Gallery 11/1950:54-Willard C. Blaisdell- Del Bland-Richard H. Wright (Valley Plaza Coins) FPL #1, Fall 1976-Jack Collins-John G. Wood-Douglas F. Bird 7/2008



LOT 169 1794 S-50 R5 G5+. A few points sharper, particularly on the obverse, but there are a dozen pits on the reverse, and a couple of them contain microscopic traces of greenish verdigris. Otherwise the surfaces are reasonably smooth. Rather glossy medium brown and light chocolate. The date is complete and the legends are easily readable except for weakness on the right edge of the reverse. MDS, Breen state II.



LOT 170 1794 S-51 R4 PCGS graded XF45. Very attractive glossy medium brown blending to light chocolate in protected areas. The surfaces are smooth and this cent has excellent eye appeal. The only notable marks are a tiny planchet flake in the field left of the bottom of the lowest curl and two minor rim bruises at TY in LIBERTY. EDS, Breen state I, without any die cracks. Graded VF25 and tied for CC#10 honors in the Bland census. Noyes says VF30 net F15 and tied for CC#16, his photo #29136. **Our grade is VF25.** The attribution is noted on the PCGS label. Comes with a nice provenance that has been traced back over a century plus a robbery and recovery story that spans the last 30 years. Certificate #35615.45/42219816

Ex James B. Wilson, Thomas L. Elder #21, 10/5/1908:978.5-Henry Chapman 6/3/1909:736-William Sleicher, S. H. Chapman 10/9/1919:887-unknown-Bowers & Merena 6/1991:598 (as VF35)-Chris McCawley & Larry Briggs-J. R. (Bob) Grellman-stolen from the trunk of Denis Loring's rental car on 10/6/1991 following the G. Lee Kuntz sale conducted by Superior Galleries in Beverly Hills-recovered and returned by Ken Pines (Coast to Coast Coins) when informed that the coin being offered in his 8/16/2021 Coin World ad was the stolen coin that he had acquired some years earlier from an unrecorded source.



EARLY CENTS AUCTIONS



LOT 171 1794 S-51 R4 VG8. Sharpness VF20 but covered with uniform moderate granularity. There are traces of shallow greenish verdigris on both sides but they do not catch your eye. Just a few old marks, all blended into the olive brown toning. The notable ones are a small depression in the hair left of the forehead and a fine scratch under LIBERTY. M-LDS, Breen state III, with die cracks at the date. The date is clear and the legends are easily readable.

Ex Craig Whitford-Tom Reynolds-2020 EAC Sale, lot 131 (includes the Whitford collection envelope and EAC Sale lot ticket)



LOT 172 1794 S-57 R1 VF20. Sharpness VF35 but there are several planchet lamination flaws on the reverse including an obvious one just right of the fraction. Otherwise the planchet is smooth and the toning is an attractive glossy light to medium chocolate brown. The obverse is quite nice, choice if not for a couple small ticks on the cheek and a pair of trivial rim bumps left of the lower curls. M-LDS, Breen state IV late. The die crack in the lower "trench" before the face is strong. Removed from a PCGS slab called VF Details Planchet Flaw (PCGS label included).

Ex Tom Reynolds FPL 2013



LOT 173 1794 S-58 R3 PCGS graded VF35, CAC Approved. Attractive glossy light chocolate brown and steel. The surfaces are smooth and this cent has excellent eye appeal. The only defects are a few light rim bruises including one at RT in LIBERTY, another left of the cap, and a small one over the second A in AMERICA. EDS, Breen state I, with no die cracks on the reverse. The date is bold and the legends are clear. A nice mid-grade 1794 cent. Graded VF25 net F15 by Noyes, his photo #36548. **Our grade is VF20.** The attribution and Trolan provenance are noted on the PCGS label. Certificate #35636.35/36135455

Ex Doug Bird-Stanley Chen (via Don Valenziano)-Chris McCawley 5/1999-Dan Trolan Collection, Goldbergs 1/27/2019:180



LOT 174 1794 S-63 R2 Repunched 7 & 4 F15. Ten points sharper but covered with faint granularity under rather glossy chocolate brown toning. The highpoints are a slightly lighter shade of brown and the eye appeal of this cent is quite nice in spite of some light rim bruises on both sides. Sharply struck EDS, Breen state I, before any die clashmarks on the obverse. The repunching on the 7 & 4 is sharp.



LOT 175 1794 S-63 R2 VG7. Sharpness VF25 but dark and covered with very fine roughness under glossy dark olive and steel, nearly black, toning. No verdigris but there are a dozen small but obvious contact marks on the obverse plus a small rim bruise at IC in AMERICA. EDS, before the die clashmarks. The date is strong and the legends are clear. Removed from an NCS slab called XF Details Damaged (NCS label included, and it shows the attribution).

THE ERIC NEWMAN S-66



LOT 176 1794 S-66 R5 NGC VG Details Damage. Sharpness VG10 but covered with nicks and small contact marks, the notable ones at the rim over E in LIBERTY and over the O in ONE. Rather glossy light olive and steel brown. No corrosion or verdigris. The date is strong and the legends are clear except for some weakness on NE in ONE. EDS, Breen state I, before any die cracks on the obverse. **Our grade is net G4.** The attribution and Green-Newman provenance are shown on the NGC label. Certificate #2046415-016

Ex Colonel E. H. R. Green-Green Estate-St. Louis Stamp & Coin Co.-Eric Newman-Eric P. Newman Numismatic Education Society (EPNNE), Heritage Auctions 11/15/2014:7014-Dr. George Wilkins, Goldbergs 1/27/2019:256 (lot ticket included)



LOT 177 1794 S-67 R3 Head of 1795 F12 but with **Strengthened Hair.** Glossy light to medium brown and chocolate. Looks great at first glance but the hair and eye have been carefully strengthened. The date is strong and the legends are clear except for weakness in the center of the reverse. Two dull nicks at the O in ONE and another in the leaves under OF are the notable contact marks. A net grade significantly below F12 is warranted but the eye appeal is decent.



LOT 178 1794 S-68 R5 Head of 1795 G4. A few points sharper but the fields and protected areas are covered with moderate roughness. No verdigris. The only notable contact marks are a dull rim nick under the 9 and a rim bruise at D-S. MDS with a strong radial die crack to the back of the head but no trace of a crack before the face. The date is strong and the legends are readable except for weakness on ONE CENT.

Ex Chris McCawley FPL 4/2020



EARLY CENTS AUCTIONS

S-70 WITH INDENT ERROR



LOT 180 1794 S-69 R3 Head of 1795 VG10. Sharpness near VF20 but covered with microscopic granularity under mostly glossy chocolate brown toning. A small rim nick left of the cap, another at the bust tip, and a rim bruise at the E in AMERICA are the only notable marks. MDS, Breen state II. The date is bold and the legends are clear.

Ex Doug Bird-Heritage Auctions #132039, lot 27008 (Bird sales ticket and lot ticket included)



LOT 179 1794 S-68 R5 Head of 1795 ANACS VG8 Details Scratched. Sharpness VG7 or better but scratched over much of the obverse and in a few places on the reverse. Microscopic roughness covers the fields but the highpoints are smooth. A dull mark on the rim opposite the chin is the only other notable defect. Chocolate brown with lighter brown on the devices. Late die state with a bisecting die crack across the obverse. The date and legends are complete and easily readable (although some letters on the reverse are weak). **Our grade is net AG3.** The attribution is noted on the ANACS label. Certificate #49676892000



LOT 181 1794 S-70 R2 Head of 1795 PCGS XF Details Cleaned. Very attractive glossy medium brown and light chocolate. The surfaces are smooth, mint frost shows in protected areas, and this cent has excellent eye appeal. The toning looks original and we see no reason to believe this cent ever was "Cleaned" as postulated by PCGS. The only mark is an old scratch on the top of the cap. Nicely struck LDS, Breen state IV. The die crack at TY is strong reaching down into the cheek where it fades away, and the die clashmarks on the reverse are clear. **Our grade is VF30.** The attribution is noted on the PCGS label. Certificate #35693.92/39472143



Ex Dr. Raymond Biggs, Heritage Auctions 1/4/2011:3131-Chris McCawley 1/18/2011-Dr. Mark D. Cadden Collection, Goldbergs 9/13/2020:56 (includes the Cadden collection envelope and Goldberg lot ticket)



LOT 182 1794 S-70 R2 Head of 1795 NGC Good Details Damaged. Glossy medium brown blending to light chocolate. The surfaces are mostly smooth but there are four dull, strong contact marks near the rim below the cap. The deep depression on the reverse, however, is an indent from an errant strike, and there are clear design elements inside the depression. The reverse was struck more than one time, one of which was a bit off center to the bottom. The obverse appears to have been struck with the die only one time. An interesting mint error--just wish the grade was better to allow a more complete analysis of the sequence of events. EDS. The date is strong. **Our grade is AG3+.** Certificate #4702216-001





LOT 183 1795 S-76a R5 Lettered Edge PCGS graded Fair-2. Glossy medium chocolate brown and steel. Smooth and void of notable marks, just heavily worn. The obverse is AG3 while the reverse is Basal State-1 showing only a few design elements. The date is weak but readable. Our grade is Fair-2. The attribution is noted on the PCGS label. Certificate #35720.02/34344495



Ex Heritage Auctions #131811, lot 23053 (lot ticket included)

1795 JEFFERSON HEAD



LOT 184 1795 S-80 Jefferson Head R5- VG8. Sharpness VF20 but there are a half dozen small pits on the obverse, and most of them have a trace of verdigris nestled down inside. In addition there are three deep, obvious dents on the reverse, strongest at EN in CENT. The highpoints have been lightly smoothed, strongest on the reverse, but the toning is an attractive and mostly glossy dark chocolate brown. The date and legends are complete and clear. Far from perfect (haven't seen a perfect one of these), but the "Jefferson Head" is very well defined. Weight 197.8 grains. Removed from an NGC holder called VF Details Damaged.



LOT 185 1796 S-88 R4 Liberty Cap G6. Slightly glossy medium steel brown with lighter steel brown toning on the devices. Extremely fine roughness shows in the fields and protected areas but overall the surfaces are decent for the grade. A thin planchet void near the rim left of the date is the best identifying mark. MDS. The date and legends are complete and easily readable.



EARLY CENTS AUCTIONS



LOT 186 1796 S-88 R4 Liberty Cap PCGS graded Fair-2. Dull dark steel with slightly lighter steel brown toning on the devices. Covered with microscopic roughness but there are no marks or other defects. The date is weak but readable as are most of the legends. **Our grade is Fair-2.** Certificate #1392.02/84302417



LOT 189 1796 S-103 R4+ LIHERTY Obverse PCGS graded AG3. Glossy medium chocolate with lighter brown toning on the devices. The devices are smooth but there is very fine roughness in the fields and protected areas. A scratch left of the lower curls is the only notable mark. The upper half of the date is easily readable and LIHERTY is complete. **Our grade is Fair-2+.** The LIHERTY error is noted on the PCGS label. Certificate #1413.03/26560664



LOT 187 1796 S-100 R5 Draped Bust PCGS graded Fair-2. Glossy chocolate brown and steel. Smooth surfaces, just well worn. The only marks are a nick before the face, a scratch at the F in OF, and three rim nicks on the reverse, none serious. The bottom third of the date is worn away but the rest is clear. **Our grade is Fair-2+.** Certificate #1407.02/83980185



LOT 190 1796 S-110 R3 Draped Bust VF35. Sharpness EF40 or better but recolored a very attractive glossy chocolate brown fading to dark chocolate and olive brown in the protected areas. The surfaces are smooth and nearly void of marks, and the toning looks original after "resting" for so many years. The only notable mark is a faint vertical hairline scratch up from the right top of the N in ONE, and it is barely visible. Sharply struck terminal die state (TDS), Breen state IX, with a strong cud break at TY in LIBERTY and numerous die cracks elsewhere on the obverse. A beautiful cent in spite of the recoloring and a neat die state. Called AU55 net VF35 by Del Bland.



LOT 188 1796 S-102 R4 Draped Bust PCGS graded AG3. Rather glossy chocolate brown and steel with slightly lighter toning on the devices. Smooth with minor marks; a rim bruise at the second S in STATES and a chip over NI in UNITED being the only notable ones. The lower half of the date is gone but the rest is clear. **Our grade is AG3.** Certificate #1404.03/81303230

Ex Chamberlain 8/1/1968-Jules Reiver, Heritage Auctions 1/24/2006:19296-Victor Scheide, McCawley & Grellman Auctions/Goldbergs 8/31/2014:173



Lot of 3

LOT 191 Trio of Cents, 1796 & 1797. Includes 1796 S-110 R3 Draped Bust LDS (VIII) with a cud at TY G5 net G4 for roughness and scratch, 1796 S-113 (maybe) Draped Bust Basal State-1 with a clear date but weak reverse, and 1797 S-135 R3 VG8 net VG7 for minor granularity. Lot of 3 coins.



LOT 192 1797 S-121b R3- Gripped Edge, Reverse of 1796, G5. The obverse is slightly better than the reverse, as usual on the variety. The surfaces are smooth and the only significant mark is a small but obvious dig or chip on the E in CENT. LDS, Breen state V, with die cracks on the obverse and significant swelling in the field behind the portrait. The "Gripped Edge" feature (actually a series of incuse grips and raised bumps) is obvious.



LOT 195 1797 S-128 R3 M over E in AMERICA VG7. Slightly sharper but the fields are covered with uniform microscopic granularity under slightly glossy olive brown toning. No verdigris. The only marks are two small rim nicks at the N in UNITED. The M over E feature is clear.

Ex James Gallegus



LOT 193 1797 S-125 R5 NCS VF Details Corroded. Sharpness F15 but much of the left half of the reverse is pitted while the remainder of the planchet is reasonably smooth, especially the obverse. No verdigris or notable signs of contact. Partly glossy olive brown and dark steel. LDS with obvious swelling and strong die clashmarks on the obverse. The date and legends are clear except for weakness at TED caused by the corrosion. Our grade is net G6. The attribution and Reiver provenance are noted on the NCS label. Certificate #5082114-014

Ex Gordon J. Wrubel 9/23/1970-Jules Reiver, Heritage Auctions 1/24/2006:19323



LOT 196 1797 S-133 R5 Stemless Wreath VG8. A few points sharper but there is microscopic roughness on both sides plus a few small areas of shallow verdigris. Slightly glossy reddish brown and chocolate with steel brown toning on the highpoints. Only minor contact marks, mostly tiny rim nicks including a single one behind the head. LDS, Breen state V, with obvious die clashmarks on the obverse and a radial die crack to the lower part of the neck. A small portion of the edge clearly shows diagonal reeds, a planchet anomaly mentioned by Breen. The Stemless Wreath feature is obvious.



LOT 194 1797 S-126 R3 F12+. Sharpness VF20 or slightly better but there is microscopic granularity hidden under the glossy toning. No verdigris and the only marks are a few faint hairlines on the neck and a small but sharp dig over the left side of the R in AMERICA. Glossy olive brown with lighter steel brown toning on the devices; the contrast gives this cent very nice eye appeal. EDS, Breen state II, with die clashmarks on the obverse but no die cracks.



LOT 197 1797 S-133 R5 Stemless Wreath ANACS graded G4. Glossy medium chocolate brown with smooth surfaces. Just minor contact marks scattered over both sides, none significant. Later die state, Breen IV early, with heavy swelling at the bust that obliterates the 7 and most of the 9 plus the opposing details at ES-OF-A. Graded G5 net G4 by Noyes, his photo #24328. **Our grade is G5.** The attribution and Ralls provenance are noted on the ANACS label. Certificate #49676901000



Ex Jeff Oliphant-Harmer Rooke Auctions 12/5/1972:1021-Robert E. Vail-Del Bland 1/25/1973-Dr. Philip W. Ralls, McCawley & Grellman Auctions/Goldbergs 1/26/2014:457 (includes the Ralls collection envelope and Goldberg lot ticket)



EARLY CENTS AUCTIONS

LOT 198 Pair of Cents, 1797 & 1798. Includes 1797 S-140 R1 G6 Very late die state with significant swelling on both sides, and 1798 S-159 R3 Style I Hair with Small 8 VG8 net G5 for an obvious dent at the top of the fraction and a few scratches. The S-159 is MDS, Breen state IV, with die cracks on the obverse. Both have a clear date. Lot of 2 coins.

The S-140 is ex John D. Wright Collection-Chris McCawley-2019 EAC Sale, lot 133 (includes the Wright collection envelope and EAC lot ticket)



Lot of 2

EQUAL FINEST S-148 WITH CUD



LOT 199 1798 S-148 R2 Large 8, Style I Hair PCGS graded XF40. Glossy reddish brown and chocolate with lighter brown toning on the highpoints. Smooth and attractive, just a bit dirty. The best identifying marks are a thin horizontal nick on the shoulder and a small, barely visible rim bruise left of the first S in STATES. Scarce M-LDS, Breen state VI, with a large, strong cud break at ERTY. **Our grade is VF20+.** Equal to finest known of those with the single cud break. Certificate #1431.40/4989155



Discovered by Mike Eisenberg

TERMINAL STATE S-148



LOT 200 1798 S-148 R2 Large 8, Style I Hair PCGS graded G4. Glossy medium brown blending to chocolate in protected areas. Mostly smooth with traces of microscopic roughness in protected areas. The left half of the date is weak but the rest is easily readable and the legends are complete. Very rare TDS with a strong due break at ERTY plus a smaller cud at the bust tip. **Our grade is G4.** The attribution and Borchardt-Cloutier-Ellsworth provenance are noted on the PCGS label. Certificate #36023.04/15003866



Ex Fred H. Borchardt 1998-John Cloutier 11/18/2000-Colonel Steven K. Ellsworth, Heritage Auctions 9/28/2013:7091



Lot of 3

DOUBLE STRUCK 1798/7



LOT 201 Trio of Cents, 1798-1809. Includes 1798/7 S-151 R3 Overdate 8 over 7 LDS AG3, 1801 S-216 R1 M-LDS G6, and 1809 S-280 R2 G5 but with a square hole through the center (probably from nailing over the entry door of an old home for good fortune). All are glossy brown and chocolate with a clear date. Lot of 3 coins.



Lot of 2

LOT 203 1798/7 S-151 (probably) R3 Overdate 8 over 7 ANACS graded Poor-1. Attractive glossy medium brown and light chocolate. Smooth and void of marks, just heavily worn. Probably S-151 based on the die swelling but the reverse is nearly slick. Struck two times showing two dates, one above the other with a minor rotation between the strikes. The higher date is complete while the lower one shows only the 98. **Our grade is Basal State-1 but Choice for that grade.** The Double Struck feature is noted on the ANACS label. Certificate #48866721000

LOT 202 Pair of Cents with Overdates, 1798 & 1800. Includes 1798/7 S-151 R3 Overdate 8 over 7 M-LDS PCGS graded AG3 (our grade AG3), and 1800/79 S-193 R4 Overdate 80 over 79 ANACS graded AG3 (our grade Fair-2+). Both have an easily readable date with a clear overdate. Lot of 2 slabbed coins. Certificate #1440.03/81427851



The S-193 is ex John Ashby-Bob LaForme-Shawn Yancey



TERMINAL STATE S-153



LOT 204 1798 S-153 R3 Large 8, Style I Hair PCGS graded VG8. Glossy medium steel brown and light chocolate. Smooth except for a patch of minor pitting hidden in the hair by the shoulder. No marks or verdigris. TDS, Breen state VII, with a strong cud break at the bust. The reverse is slightly sharper than the obverse. The date and legends are complete and clear. Our grade is G5+, very close to G6 (the reverse is VG7). Certificate #1431.08/33205926



LOT 205 1798 S-155 R3 Style I Hair, Reverse of 1796 VG8+. Slightly sharper but there are a few light scratches on the reverse, none visible without the aid of a glass. Glossy brown blending to darker olive brown and steel in protected areas. EDS, Breen state I. The date and legends are clear. Nice for the grade.



Lot of 3

LOT 206 Trio of 1798 Cents. Includes S-151 Overdate 8 over 7 R3 M-LDS AG3, S-154 R4+ Style I Hair with Large 8 MDS G4, and S-175 R3 Style II Hair, Small 8 MDS G5. All have a clear date. Lot of 3 coins.



LOT 207 1798 S-156 R5+ Style I Hair, Reverse of 1796 Basal State-1. The obverse is Fair-2 but the reverse is nearly slick with just a few faint details remaining visible. The planchet is smooth, just heavily worn, but there are two strong nicks or digs on the right side of the obverse. Glossy chocolate brown. The date is strong and the die crack from the bust down to the dentils is clear. MDS, Breen state II.

RARE EARLIER STATE S-166



LOT 208 1798 S-166 R1 Large 8, Style II Hair PCGS Fine Details Scratch. Dark grayish steel and olive brown. The surfaces are dull thanks to uniform extremely faint granularity. No verdigris. There are a couple very shallow vertical scrapes well hidden in the toning over the bust and a couple dull cuts on the rim over TES in STATES. Nothing special except for the die state, which is much earlier than usually seen for this variety. E-MDS, Breen state II. The die crack that arcs through the fraction to the E in UNITED is light and there is no lump inside that E. This is the earliest state seen by this cataloger, but an uncracked example is rumored to exist. **Our grade is F12 sharpness net VG8.** The attribution and Reynolds provenance are noted on the PCGS Secure label. Certificate #36068.95/32783160

Ex Fred Lochary 7/2009-Tom Reynolds Collection, McCawley & Grellman Auctions/Goldbergs 1/31/2016:163



LOT 209 1798 S-167 R1 Large 8, Style II Hair PCGS graded AU50, CAC Approved. Frosty olive and chocolate brown with lighter steel brown in the fields. The surfaces are satiny with flowline luster in protected areas, and this cent has excellent eye appeal. The best identifying mark, and it is barely visible, is a tiny scrape on the left top of the M in AMERICA. EDS+, Breen state II, with an uncracked reverse. Graded EF45 net EF40 and tied for CC#10 in the Noyes census, his photo #61883. **Our grade is EF40+, close to EF45.** Certificate #1434.5/20172503

Ex Douglas F. Bird 8/2013



LOT 210 1798 S-167 R1 Large 8, Style II Hair VF25. Five points sharper but there some microscopic specks of greenish verdigris on the reverse, none visible without the aid of a glass. The obverse is smooth and void of notable marks, close to choice. Glossy medium chocolate brown and steel with lighter brown in protected areas and darker overtones on the highpoints of the reverse. E-MDS, Breen state II early. Graded VF30 net VF20 by Noyes, his photo #34597.

Ex Walter Reed 1973-Fred H. Borchardt-Bill Noyes 5/3/2013-Terry Denman-2019 EAC Sale, lot 139 (includes the Borchardt collection envelope)



LOT 211 1798 S-173 R3 Small 8, Style II Hair PCGS graded AU50. Chocolate brown and steel with a patch of reddish brown at the berry right of the E in ONE. The surfaces are a bit dull and appear to have never been brushed or touched in a “loving” way for over 150 years. Traces of soft dirt are nestled into protected areas on the reverse. The only defect is in that reddish area right of ONE where you can see a bit of microscopic roughness. M-LDS, Breen state VII, with a strong cud break at ERTY. The reverse is rotated 60 degrees CCW relative to the normal head-to-foot die orientation. A nice, totally original example. Our grade is VF35. The attribution is noted on the PCGS label. Certificate #36089.50/30488673

IMPRESSIVE FLIPOVER DOUBLE STRUCK S-173



LOT 212 1798 S-173 R3 Small 8, Style II Hair PCGS graded VG8. Flipover Double Strike, Rotated Reverse. Slightly glossy chocolate brown with lighter steel brown toning covering the devices. No roughness or verdigris, just a bit dull. The only notable mark is a thin scratch at the bottom of ON in ONE on the obverse. This cent was struck twice and the evidence is obvious at arm’s length. The first strike was normal but the cent failed to eject completely from the coining chamber before flipping over and being hit a second time. The second strike hit nearly 50% off center leaving a strong impression of ONE, ENT, and parts of the wreath at the bottom of the obverse and obliterating all traces of the date. The obverse die struck at the opposing area on the right side of the reverse but only faint traces of the hair details are still visible there. The planchet is now egg-shaped as a result of that second off-center strike. M-LDS, Breen state VIII, with a cud break over ERTY. The reverse is rotated 65 degrees CCW on the initial strike. A neat mint error. Our grade is G6. The attribution, “Flipover Double Strike” mint error, and Reynolds provenance are all noted on the PCGS Secure label. Certificate #36089.08/32783709

Ex Bill McClean, McCawley & Grellman Auctions 6/1993:152-Tom Reynolds Collection, McCawley & Grellman Auctions/Goldbergs 1/31/2016:178



LOT 213 1798 S-176 R4 Small 8, Style II Hair F12. Glossy medium brown and light chocolate. Smooth and attractive showing only tiny contact marks including a few rim nicks over OF. MDS, Breen state IV, with die cracks on both sides. The date and legends are strong.



LOT 214 1798 S-176 R4 Small 8, Style II Hair VG10. At least five points sharper with fine verdigris on the upper half of the obverse and a few contact marks including some faint hairline scratches in the hair and a rim nick under the 1 in the date. The reverse is choice. Light olive brown. M-LDS, Breen state V, with die cracks on both sides. The date and legends are strong.

Ex an unrecorded dealer on the bourse at the Baltimore show 3/27/1993

PROBABLY FINEST S-177



LOT 215 1798 S-177 R4+ Small 8, Style II Hair VF30+. Sharpness near EF40 but the surfaces appear to have been overbrushed or waxed ("Sheldonized"). No corrosion, only trivial marks. A tiny vertical tick high on the shoulder, a horizontal one near the rim left of the hair ribbon, a diagonal nick under the ear, and a shallow planchet void or flake at the right bottom of the D in UNITED are the only notable marks. Olive brown and chocolate with lighter steel brown on the devices. An interesting die state, the latest seen for this variety. Both sides show extensive fine to moderate die rust and there are two clear die cracks through the date (as seen in the late state of the S-178 marriage; not mentioned by Breen for the S-177 marriage). In addition there is a swollen area at the dentil tips over the R in AMERICA. A sharp, attractive cent that has solid claims to finest known honors. Clearly sharper than any in the Noyes photo array.

Acquired from an unrecorded source by Mark Moncrieff at least 40 years ago



OFF-CENTER S-177



LOT 216 1798 S-177 R4+ Small 8, Style II Hair NGC graded G4. Rather glossy chocolate and steel brown with hints of reddish chocolate on both sides. The surfaces are mostly smooth with only traces of microscopic roughness on the lower part of the reverse. The notable marks are a small punch mark on the throat and an old vertical scratch in the field before the throat. EDS, Breen state II. Struck 10-15% off center to K-10.5. The date is complete and clear and the legend on the upper right part of the reverse is strong. **Our grade is G5.** The attribution, Off-Center Mint Error, and Mervis provenance are noted on the NGC label. Certificate #2038617-007

Ex McCawley & Grellman Auctions/Goldberg's 2/10/2008:1195-Daniel W. Holmes, Jr., McCawley & Grellman Auctions/Goldbergs 9/2010:387-Adam Mervis, Heritage Auctions 1/10/2014:2680



LOT 217 1798 S-178 R5+ Style II Hair, Reverse of 1796 PCGS graded Poor-1. Glossy medium chocolate brown with slightly lighter brown toning on the obverse devices. No marks or other defects. The date and LIBERTY are easily readable and the die cracks on the obverse are visible, but the reverse is nearly slick showing only a few faint designs on the upper half. The die state on the obverse is quite late with all the cracks and swelling associated with the S-178 die marriage. Our grade is G4 on the obverse, 0 on the reverse. The attribution is noted on the PCGS label. Certificate #36008.01/34850942



LOT 219 1800/798 S-190 R3 Overdate 800 over 798, Style I Hair VG10. Sharpness F15 but there are numerous nicks on the neck into the field below the ribbon plus several rim bruises on both sides. The strongest rim bruise is over the O in OF. Otherwise the surfaces are smooth and the toning is glossy chocolate brown with frost in protected areas on both sides. EDS, Breen state I. The overdate is visible on all three digits, clearest on the 8 and faint on the other two.

Ex Stack's circa 1966



LOT 218 1798 S-183 R5 Small 8, Style II Hair G5. Nice glossy medium chocolate brown and steel. Smooth and attractive with only trivial marks, nearly choice. The bottom of the date is relatively weak, as usual for this variety, but it is easily readable.

Ex Fred Borchardt-Walter Reed-Bill Noyes 5/2/2014



LOT 220 1800/79 S-192 R3 Overdate 80 over 79 F12. Mostly glossy olive brown and chocolate. Sharpness slightly better but a glass reveals fine roughness under the attractive toning. No verdigris, and the only marks are a few small ticks at the lower curls. EDS, Breen state I, without any die cracks. The date and legends are strong and the overdate feature is clear.

Ex Golden Eagle Coins



Lot of 2

LOT 221 Pair of PCGS graded Cents, 1800 & 1802. Includes 1800/79 S-194 R3 Overdate 80 over 79 EDS PCGS graded G4 (our grade AG3+), and 1802 S-228 R2 Error Fraction 1/000 PCGS graded AG3 (our grade AG3). Both dates are a bit weak but easily readable, and the attribution is noted on the S-228 slab label. Lot of 2 slabbed coins. Certificate #36341.03/15000018 - 1455.04/31419955

The S-228 is from the Butternut Hoard

CONDITION CENSUS S-195



LOT 222 1800/79 S-195 R5 Overdate 80 over 79, Style II Hair VF25. Sharpness VF35 with some very light hairline scratches on the portrait and neck, and the face is covered with a very thin layer of dark carbon. Otherwise the surfaces are smooth and quite attractive. Glossy chocolate brown delicately mottled with lighter brown toning on the reverse, the face dark steel due to the carbon dust. MDS, Breen state III. The die crack through the base of RTY extends to the rim at right, but the rim cud right of the Y has not formed. Called VF35 net VF25 and tied for CC#3 honors in the Noyes census, his photo #33992. The CC#1 example is in the ANS Collection.

Ex Tom Reynolds 10/2/2000-Jack Wadlington (via Bob Grellman & Chris McCawley) 6/30/2005-Daniel W. Holmes, Jr., McCawley & Grellman Auctions/Goldbergs 9/6/2009:364-Adam Mervis (via Greg Hannigan), Heritage Auctions/1/10/2014:2711



EARLY CENTS AUCTIONS



LOT 223 1800/79 S-196 R1 Overdate 80 over 79 VF35. Sharpness EF40 or slightly better but very nicely retoned glossy uniform reddish chocolate brown. The surfaces are smooth and the only mark is a tiny tick in the field just left of the lower curls. Mint frost shows in protected areas. MDS, Breen state II, with die clashmarks but no cracks. The overdate feature is strong.

LOT 224 1800 S-201 R4+ VG7+. Glossy olive brown and chocolate with lighter brown toning on the devices. Smooth and quite nice for the grade. Close to VG8. Near the lower end of the condition census.

Ex Colorado Rare Coins 6/27/2017

DOUBLE STRUCK S-202



LOT 225 1800 S-202 R4+ G4. Very slightly sharper but there is a large "X" with an additional crossbar lightly scratched into the center of the portrait and a strong rim dent just left of the fraction. Otherwise the surfaces are smooth and attractive, choice for the grade. Terminal die state, Breen state VII. The die cracks on the obverse are massive and the reverse is very heavily swollen. This cent was double struck. The first strike was slightly off center (about a millimeter) to K-6 and the second impression was slightly off center to K-1.5 leaving a separation between the strikes of at least a millimeter. Evidence of the initial strike shows on both sides, strongest under the big die break left of the lowest curl and above ON in ONE where another ON is located. A neat mint error on a great die state.

Ex McCawley & Grellman Auctions/Goldbergs 2/3/2013:311 (lot ticket included)



LOT 226 1800 S-202 R4+ G4+. Glossy chocolate and darker steel brown. Smooth, just worn showing only trivial marks. Very late die state with a large retained cud covering the curls and heavy swelling on the reverse that obliterates parts of the legend. The date is easily readable.

Ex Jim Long (via Rod Burress), McCawley & Grellman Auctions 9/13/1997:433-Scott Barrett-Shawn Yancey, 2018 EAC Sale, lot 263 (includes both lot tickets)

SHELDON PLATE COIN



LOT 227 1800 S-207 R3 VF30. Highly glossy chocolate and steel brown with frosty lighter brown toning in protected areas. The surfaces are coated with a very thin layer of wax or lacquer to protect them, most likely done by Dr. Sheldon, the so-called "Sheldonizing" effect. Very attractive and nearly flawless. The only marks worthy of mention are a diagonal nick on the neck and a tiny vertical pinscratch on the leaves under the T in CENT. MDS, Breen state III. The lower part of the first 0 in the denominator is filled and a new crack connects the second 0 to the right end of the fraction bar. Both sides are plated to illustrate the die variety in Early American Cents and Penny Whimsy. Called VF30 and tied for CC#5 in the Bland census. Noyes says VF30 net VF25 and tied for CC#8, photo #34870. A very attractive cent that comes with a great provenance.

Ex Dr. William H. Sheldon-Dorothy I. Paschal-Allen E. McDowell-Jake Hendin 4/1976-Del Bland 6/1976-Bob Vail 11/21/1988-Del Bland-Dr. Philip W. Ralls-Gary Ruttenberg, McCawley & Grellman Auctions 8/17/1996:198-Jack Wadlington (via Bob Grellman & Chris McCawley) 6/30/2005-Daniel W. Holmes, Jr., McCawley & Grellman Auctions/Goldbergs 9/6/2009:390-Chris McCawley 8/11/2010-Terry Denman (includes the Denman collection envelope)



LOT 228 1800 S-208 R3 VF20. At least 5 points sharper but there are several hairline scratches on the face with a few extending down onto the neck. All the scratches blend nicely into the natural toning and are not especially distracting. Otherwise the surfaces are smooth with only a few trivial marks. The reverse is close to Choice. Glossy reddish steel brown and chocolate. EDS +, Breen state II, with a retained cud break over TY. Graded EF40 net VF20 and tied for CC#3 in the Noyes census, his photo #85139. Bland says net VF20 and tied for CC#10. Comes with a nice provenance.

Ex Raymond Gallo 1960-R. E. Naftzger, Jr. 12/11/1986-Herman Halpern, Stack's 3/16/1988:183 (as net VF25)-Leigh Bernard-Tom Reynolds 12/27/2000



Lot of 2

LOT 229 Pair of Cents, 1800 & 1801. Includes 1800 S-209 R3 MDS with a small mint-made planchet clip G6, and 1801 S-223 R1 Error Fraction 1/000 EDS VG8. Both are smooth with glossy olive brown and chocolate toning. Lot of 2 coins.



LOT 230 1801 S-215 R4+ G5. Glossy chocolate and steel with a splash of darker chocolate on the neck and bust. No notable defects, just worn. Later die state with cracks and swelling at the lower curls that weakens the 18 while the 01 remains clear.

Ex Tom Wolf, McCawley & Grellman Auctions/Goldbergs 9/20/2010:880-Greg Hannigan

RARE S-218 3-ERROR REVERSE



LOT 231 1801 S-218 R5+ 3-Error Reverse NCS VG Details Corroded. Sharpness G6 but corroded, strongest on the obverse. The date is weak but readable while the reverse is much stronger clearly showing all 3 of the die-cutter errors. No verdigris. The only notable marks are several fine pin scratches through the date, and these are visible only under magnification. Dull dark steel with lighter steel brown highpoints. Swelling is visible at RTY, as usual. Our grade is net Fair-2. The attribution is noted on the NCS label. Certificate #5104652-001



LOT 232 1801 S-224 R1 F12. Sharpness VF20 but there are too many small contact marks for that grade. Most of the nicks are in the field behind the portrait and there is a small dig at the left top of the E in LIBERTY. The planchet is mostly smooth but there is an area of fine roughness around the L in LIBERTY and another at the top of the wreath. Glossy medium brown and steel with reddish brown toning in the roughened areas. Scarce terminal die state, Breen V, with a strong cud break at AME and a narrow rim break at the F in OF. A minor planchet clip affects the dentils over the E in STATES.

Ex John S. Ashby auction 10/1979:57



**EXTREMELY RARE
TERMINAL S-238**

LOT 233 1801 NC-1 R5+ Fair-2. Rather glossy dark steel brown. No corrosion or verdigris, but there are numerous light scratches on the obverse plus a couple more on the reverse, all old and blended into the natural toning. The date is strong but the lower part of the reverse is weak or missing thanks to uneven wear (as usual due to an uneven strike always seen on this variety). Later die state, Breen II, with a cud break at the top of ES in STATES. Noyes photo #39296.

Ex Chris Young-1995 EAC Sale, lot 228 (lot ticket included)



LOT 234 1802 S-228 R2 Error Fraction 1/000 F15. Ten points sharper but there is a very subtle dent in the hair left of the ear lobe (easily overlooked, even under magnification). Otherwise only trivial contact marks on smooth, attractive surfaces. Glossy chocolate brown and steel. E-MDS, Breen state II. The error fraction 1/000 feature is obvious.



LOT 236 1802 S-238 R4 VG8. Sharpness VF35 but corroded, the roughness ranging from nonexistent to severe. The roughness is strongest at LIBERTY, which is mostly obliterated, while there are areas on the reverse that are smooth and glossy. No verdigris and only a few light contact marks, all well hidden in the roughness. Partially glossy mix of chocolate, dark steel, and olive brown with hints of silvery steel toning in some of the rough areas. Extremely rare terminal die state, later than Breen's final state V, with a clear cud break joining TATE to the rim above. Breen speculated that this cud might exist, but he never saw one. There are at least 3 known today. The bottom of the date is weakly struck thanks to the cud on the opposing side that gathered up much of the planchet thus keeping it from properly filling the opposing obverse details. LIBERTY is mostly gone due to the roughness but everything else is clear. Removed from an NCS slab graded EF details corroded (NCS label included, and it shows the attribution and Reiver provenance).



LOT 235 1802 S-230 R1 EF40. Ten points sharper but recolored glossy dark steel brown with traces of light reddish brown on both sides. The surfaces are smooth except for a small area of extremely fine roughness near the dentils left of the lower curls. Otherwise the only defect is a tiny speck of raised verdigris just left of the date. M-LDS, Breen state IX, with die rust in the field above the bust and several die cracks on the reverse. Graded AU55 net EF45 by Noyes, no photo available.

Ex Chris McCawley 8/6/2014

Ex Jonathan Kern 5/28/1996-Jules Reiver, Heritage Auctions 1/24/2006:19541-Daniel W. Holmes, Jr., McCawley & Grellman Auctions/Goldbergs 9/6/2009:465-Robert Soltisiak (includes the Holmes collection envelope and both lot tickets)



EARLY CENTS AUCTIONS



LOT 237 1802 S-240 R3 VF20+. Sharpness EF40 with fine roughness covering much of the right half of the obverse and left side of the reverse. The roughness on the left side of the reverse has been lightly scraped, perhaps to remove verdigris but they missed a speck of it over the D in UNITED. Partly glossy medium steel brown and chocolate with reddish brown tones in the roughened areas. E-MDS, Breen state II. There are strong die clashmarks on the obverse but no cracks. Graded EF45 net VF25 and tied for CC#6 in the Noyes census, his photo #39160. Bland says EF40 net VF25 and tied for CC#7.

Ex George Maroskos-John A. Obey-Tom Reynolds, Bowers & Merena 11/1994:2055 (as VF35)-Walter Husak-Chris McCawley FPL 2005-McCawley & Grellman Auctions/Goldbergs 2/10/2008:1281-Dr. Harry Salyards, 2012 EAC Sale, lot 204



Lot of 2

LOT 239 Pair of 1802 Cents. Includes S-239 R3 LDS (V) VG7 net G6 for minor roughness, and S-241 R1 Stemless Wreath E-MDS VG8 net VG7 for scratches on the reverse. Both have a strong date and clear legends. Lot of 2 coins.



LOT 238 1802 NC-1 R5 Fair-2. Sharper by several points, especially on the reverse, but covered with fine to moderate roughness, strongest on the obverse. No verdigris and the only significant mark is a rim nick over the I in LIBERTY. Slightly glossy dark olive and lighter chocolate. EDS (or the obverse crack is too fine to see with the rough surfaces). The date is weak but easily readable and the legends are complete.



Lot of 2

LOT 240 Pair of Cents, 1802 & 1807. Includes 1802 S-241 R1 Stemless Wreath with Doubled Fraction Bar EDS VF25 net VG8 for granularity and 1807/6 S-273 R1 Overdate Large 7 over 6 LDS VG8. Both have a strong date. Lot of 2 coins.

The 1807 is ex John S. Ashby auction 6/1981:108

IMPORTANT S-248



LOT 241 1803 S-248 R4 Mumps Obverse VF30. Five points sharper with a few contact marks on the obverse including a relatively large vertical nick hidden in the hair below BE and two fine hairline scratches in the field before the face. Glossy medium chocolate brown and steel. Traces of frost are visible in protected areas. EDS, Breen state I, before any swelling or die cracks. Graded VF35 net VF30 and tied for CC#6 in the Noyes census, his photo #28761. Bland says VF30 and tied for CC#7. An attractive example of a tough die variety, and it comes with a nice provenance.

Ex RARCOA-Jerry A. Bobbe-William R. T. Smith-Robert Schick 4/14/1989-R. S. Brown, Jr., Superior 1/27/1996:344-Dr. Bruce Reinohl 3/14/2013



LOT 242 1803 S-248 R4 Mumps Obverse PCGS graded F15. Glossy medium brown and chocolate. Smooth and void of defects, just moderately worn. A dull scrape on the left side of the O in ONE is the notable mark. M-LDS, Breen state II late. The die crack through MERIC is clear. **Our grade is VG10+, close to F12.** Certificate #1482.15/13691166

RARE TERMINAL STATE S-249



LOT 243 1803 S-249 R2 Corrected Denominator 100 over 000 VF20. Sharpness near EF45 but lightly corroded, strongest on the reverse where there are a few shallow pitmarks at the second T in STATES. No verdigris and only a few trivial contact marks, including a thin nick in the field off the tip of the nose. Mostly glossy reddish chocolate and olive brown. Rare terminal die state, Breen state VI, with a large cud break at the bust tip and another joining RIC to the rim above. The corrected fraction feature is obvious. Comes with a nice provenance.

Ex C. Douglas Smith-Dr. Robert A. Schuman-Chris McCawley 12/31/2005-Daniel W. Holmes, Jr., McCawley & Grellman Auctions/Goldbergs 9/6/2009:491 (includes the Holmes collection envelope and lot ticket)



LOT 244 1803 S-254 R1 F12 but Counterstamped MORSE (Brunk M-893). Glossy medium steel brown and chocolate with hints of reddish chocolate toning in protected areas. There are traces of shallow verdigris in the field before the portrait and some old scratches in that area as well. EDS, Breen state I, before any die cracks. MORSE is deeply stamped two times on the portrait with raised letters inside a recessed rectangle (Brunk #893 which he reports on a single 1801 large cent).

CONDITION CENSUS 1803 S-256



LOT 245 1803 S-256 R3 AU50. Lustrous medium steel brown with lighter brown and tan faded down from mint color in protected areas. Close to mint state but there are very faint hairlines on the portrait, a tiny scratch at the bottom of the 0 in the date, and a spot of reddish light brown toning at the C in CENT. Scarce LDS, Breen state V, with a cud break at STA that touches the T. Called AU50 net EF45 and tied for CC#5 in the Noyes census (but second finest of those known with the cud), his photo #39675.

Ex Stack's 9/1997:342 (as MS60)-James R. McGuigan-Tom Reynolds 4/18/2004-Wesley A. Rasmussen 4/2004-Jon A. Boka, Heritage Auctions 9/8/2011:3019 (as AU50)



LOT 246 1803 S-258 R1 Large Fraction VF20. Five points sharper but there is a thin planchet lamination into the field from the end of the nose and some planchet flakes in the field behind the head, all as struck. The only notable contact marks are a minor rim bruise off the upper edge of the bust and another over the first T in STATES. Glossy medium olive. M-LDS, Breen state III, with a die crack arcing through the field below the hair ribbon but before any bulges. Removed from an NGC slab graded VF30 (NGC label included and it shows the attribution).

LOT 247 1803 S-258 R1 Large Fraction F12. Sharpness VF25 but covered with very fine roughness under slightly glossy dark olive brown toning. The highpoints are a lighter shade of steel brown. Dark verdigris is caked into protected areas on the reverse. A small pinprick under the Y in LIBERTY and a minor rim bruise right of that Y are the notable marks. EDS.

Ex Stack's 1/14/1993:1150

Ex Heritage Auctions 5/29/2008:1790 (lot ticket included)

DONATED LOT



LOT 248 1803 S-258 R1 Large Fraction VG10. Attractive glossy light chocolate with a few small splashes of lighter brown. Smooth, just worn. MDS, Breen state II late, with a faint die crack up through the 1 in the date but no sign of a crack at the hair ribbons. This cent from the Jack Robinson Collection (but not in his 1/29/1989 Superior auction) is donated with ALL PROCEEDS TO EAC.

Ex Jack H. Robinson Collection (includes the Robinson collection envelope)



LOT 249 1803 S-261 R2 Small 3, Large Fraction EF40. Five points sharper but there are traces of faint roughness at RTY and an obvious planchet flake at the bottom of the denominator (as struck but distracting nonetheless). Frosty medium steel brown with hints of light reddish steel on the obverse and a puff of dark olive brown toning in the hair left of the neck. Lustrous lighter steel brown shows in protected areas on the reverse. E-MDS, Breen state II, with a fine die crack up between the 8 & 0 to the shoulder. Graded EF45 net VF35 and tied for CC#9 in the Noyes census, his photo #23195. Bland says EF40 and CC#9 in his census.

Ex Ralph Goldstone 10/19/1962-C. Douglas Smith-Chris McCawley 1999-Robert C. Clark, Bowers & Merena 2/2000:313-Chris McCawley, 2004 EAC Sale, McCawley & Grellman Auctions, lot 262-Tom Reynolds



LOT 250 1803 S-263 R3 Small Fraction EF40. At least ten points sharper with traces of extremely faint roughness on both sides, none visible without a good glass. No notable signs of verdigris and only a few light contact marks, but the color is a bit blotchy. Glossy chocolate brown tones ranging from light to very dark. There are some faint abrasions hidden in the toning off the bust tip and left of the lowest curl, plus a half dozen tiny pinpricks in the leaves under the second A in AMERICA. Nicely struck LDS, Breen state VII. The cud and die cracks are all strong. Called EF40 and tied for CC#9 in the Bland census. Noyes says EF45 net VF30 and tied for CC#9, his photo #21055. A sharp, reasonably attractive cent in spite of the minor imperfections.

Ex Lester Merkin 6/26/1970:43-R. E. Naftzger, Jr., McCawley & Grellman Auctions/Goldbergs 9/14/2008:190-McCawley & Grellman Auctions/Goldbergs 1/29/2012:312



LOT 251 1803 S-263 R3 Small Fraction PCGS graded VG8. Glossy light chocolate brown. Smooth and void of notable defects. M-LDS, Breen state V, with a cud break under the date and weakness at STA due to die failure in that area. **Our grade is VG7.** Certificate #1482.08/28736951

Ex Heritage Auctions #131421, lot 20517 (lot ticket included)

THE DOUG SMITH-HERMAN HALPERN S-264



LOT 252 1803 S-264 R4+ Large Date, Small Fraction PCGS XF Details Environmental Damage. Sharpness near VF30 but most of the planchet shows fine roughness (although the right side of the obverse and the highpoints of the devices on both sides are mostly smooth). No verdigris and the only notable mark is a barely visible rim bruise at the second A in AMERICA. The eye appeal of this cent is decent, especially for a tough "Redbook" variety that often comes with significant problems. Partially glossy uniform medium chocolate brown. MDS, Breen state II, with the usual die cracks on both sides. The date is bold and the legends are complete and easily readable. Graded EF40 net F15 and tied for CC#8 in the Noyes census, his photo #29080. Bland says VF25 net F15 and tied for CC#5 in his census. **Our grade is net F15.** A significant example of this famous variety, and it comes with a nice provenance. The attribution is noted on the PCGS label. Certificate #36410.97/82665389

Ex C. David Pierce, Hollinbeck 11/1944:1872-Petersen-Hollinbeck 10/31/1957:324-Hollinbeck 2/4/1963:2211-Kagin's 9/1978:153 (as VF30)-C. Douglas Smith 10/1979-Denis W. Loring 3/1/1985-C. Douglas Smith-Herman Halpern, Stack's 3/16/1988:248 (as VF25)-Glen R. Griffith



LOT 253 1803 S-265 R4 Large Date & Fraction PCGS graded AG3. Glossy dark olive brown and steel. Mostly smooth but there are traces of very fine porosity on both sides and a few marks including a planchet fissure above AM (as struck). MDS. The date and fraction are clear. **Our grade is AG3.** Certificate #1501.03/31713672



LOT 254 1803 NC-1 R5+ Fair-2+. Slightly glossy medium chocolate brown and steel with darker olive brown in protected areas. Minor roughness covers the fields and protected areas on the obverse but overall the surfaces are mostly smooth. No verdigris or notable marks. The date is weak but readable and the legends on the reverse are just starting to fade into the rim leaving some letters weak. Overall decent for the grade.



LOT 255 1804 S-266c R2 PCGS graded Fair-2. Glossy chocolate brown and steel with lighter steel brown toning on the reverse devices. LDS, Breen state IV, with cud breaks at RTY and MERIC. The date is faint but the cud breaks are clear. **Our grade is Fair-2 overall but close to AG3 on the reverse.** Certificate #1504.02/35061186



LOT 256 1805 S-267 R1 VG10. Sharpness VF20 but there is a swipe of small pits down the portrait from the forehead to the shoulder and a small patch of roughness at TATE in STATES. The remainder of the planchet is smooth but there are some contact marks including several nicks on the neck and a small rim bruise over the T in LIBERTY. MDS. The repunching on the 5 is still clear and most of the dentils are visible.

Ex John S. Ashby auction 8/1979:79



Lot of 3

LOT 257 Trio of Cents, 1805-1807. Includes 1805 S-268 R3 MDS VG10 with smooth, problem-free surfaces, 1806 S-270 R1 E-MDS VF35 net VF20 for light granularity under rather glossy toning, and 1807 S-271 R1 MDS with a clear "Comet" break G6 net G5 for a minor bend in the planchet. All have a strong date. Lot of 3 coins.




LOT 258 1806 S-270 R1 VG10. Glossy medium brown and light chocolate blending to olive brown in protected areas. Smooth, just worn. A tick over the left top of the N in CENT may help identify this cent. E-MDS, Breen state II, with light die clashmarks.

Ex Tom Waggoner 1/1979



EARLY CENTS AUCTIONS




LOT 259 1807 S-271 R1 Comet Obverse NGC graded G6.  Glossy chocolate brown with lighter brown toning in protected areas on the reverse. No roughness, and the only significant mark is a dull nick on the upper edge of the bust. E-MDS, Breen state II, with die clashmarks on the obverse but no "Comet" break behind the head. **Our grade is G6.** The attribution and Rasmussen provenance are noted on the NGC label. Certificate #380695-00011

Ex the bourse at the 1985 FUN Convention 1/5/1985-Wesley A. Rasmussen-Shawn A. Yancey (includes the Rasmussen collection envelope)



Lot of 2

LOT 260 Pair of slabbed, graded Cents, 1807 & 1808.  Includes 1807 S-271 R1 Comet obverse MDS with a clear "Comet" on the obverse PCGS graded AG3 (our grade is G4), and 1808 S-279 R1 MDS ICG graded AG3 (our grade is AG3). Both are glossy brown and chocolate with a clear date. Both have the attribution noted on the slab label. Lot of 2 slabbed coins. Certificate #36454.03/32825695 - 031045235590300401

POPULAR 1807/6 SMALL OVERDATE



LOT 261 1807/6 S-272 R4+ Overdate Small 7 over 6 NCS VG Details Corroded. Sharpness G6 or a bit better, particularly on the reverse, but the obverse is unevenly corroded and has three old but obvious scratches. The reverse is sharper and free of marks but is dull from uniform fine to moderate granularity. Dark olive brown and steel. On the good side of the ledger the date is complete and easily readable, and the Small 7 over 6 Overdate feature is obvious. Our grade is net AG3. An acceptable hole filler for this tough "Redbook" variety. The attribution is noted on the NCS label. Certificate #5104652-002



Lot of 2

PENNY WHIMSY PLATE COIN



LOT 262 Pair of Cents, 1808 & 1829. Includes 1808 S-278 R3 LDS VG8 net G6 for minor roughness, and 1829 N-8 R1 EDS VF20 with smooth brown surfaces. Lot of 2 coins.



Lot of 2

LOT 263 Pair of Cents, 1809 & 1814. Includes 1809 S-280 R2 E-MDS (Breen II) VF25 net VG10 for fine granularity and 1814 S-294 R1 Crosslet 4 EDS VF30 net VG10 for fine to moderate granularity. Lot of 2 coins.

The 1809 is ex Corrado Romano Estate, Stack's 6/16/1987:171

LOT 265 1813 S-292 R2 NGC graded AU55. Frosty dark olive brown and steel. Essentially flawless showing only trivial friction on the highpoints. A small planchet flake between the chin and star 2 is the best identifying mark (as struck). M-LDS, Breen state IV, with flowlines in the fields and the reverse rim starting to fail. Called AU50 net EF45 by Noyes, his photo #62126. Our grade is EF45. The attribution is noted on the NGC label. This is the plate coin for the variety in Dr. Sheldon's Penny Whimsy. Certificate #3412065-009

Ex Davis-Graves Collection 4/8/1954:1641-Stack's 12/1973:28-Stack's 4/1977:1029-Dr. Willard J. Carmel, Jr.-Jack Beymer-Bob Travis, Superior 2/1991:767-Jon A. Boka, Heritage Auctions 9/8/2011:3029



LOT 264 1810/09 S-281 R1 Overdate 10 over 09 VF20. Glossy olive and steel brown. Smooth and attractive, just moderately worn with only trivial contact marks. MDS. The overdate is clearly visible.

Ex McCawley & Grellman Auctions/Superior 10/2000:1219 (lot ticket included)



EARLY CENTS AUCTIONS



LOT 266 1813 S-293 R2 F12. Sharpness VF25 but covered with fine to moderate granularity. No marks or verdigris. Rather dull olive brown and steel. LDS. The obverse is misaligned to K-9 while the reverse is centered on the planchet.

Ex 2003 EAC Sale, McCawley & Grellman Auctions 4/26/2003:504-Pat's Coins & Collectables 7/21/2020



LOT 267 1814 S-295 R1 Plain 4 VF30. Sharpness EF45 but covered with uniform very fine granularity under frosty medium olive brown and steel toning. No verdigris and the only contact marks are a scrape through the E in AMERICA and a smaller scrape on the rim over the second S in STATES. Sharply struck a bit off center to K-7. M-LDS, Breen state IX, with a die crack on the obverse and flowlines in the fields, strongest on the reverse. This cent has an attractive satiny look in spite of the imperfect surfaces.

Ex Stack's 1/17/1996:123 (plated)



LOT 268 1816 N-2 R1 MS60. Lustrous light olive and bluish steel with faint peeps of faded mint color in a few places on the obverse. Satiny and free of spots or stains, but there is a dull scrape down the neck close to the throat. M-LDS with an additional small cud break in three dentils between stars 11 & 12. The reverse is rotated 30 degrees clockwise from the normal head-to-foot die orientation. Most likely a survivor from the Randall Hoard.

Ex Floyd T. Starr, Stack's 12/6/1984:1549-Stack's 6/7/1990:19



LOT 269 1816 N-2 R1 PCGS graded MS62 Brown. Frosty light greenish olive brown. The fields are satiny and the only mark is a faint puff of slightly darker brown toning at the bust tip. M-LDS, the usual Randall Hoard die state. The reverse is rotated 45 degrees clockwise relative to the normal head-to-foot die orientation. **Our grade is MS60.** The attribution is noted on the PCGS label. Certificate #36526.62/32785122



Lot of 3

LOT 270 Trio of Cents, 1816-1820. Includes 1816 N-4 R2 MDS VF30 net VF25 for minor marks on otherwise nice surfaces, 1817 N-17 R4 M-LDS with a sunken retained cud over TATE G5 net AG3+ for a dent and roughness, and 1820 N-8 R3 Small Date VF30 net F15 for light pitting on the obverse and a choice reverse. Lot of 3 coins.



LOT 271 1816 N-9 R3 VF30. Five points sharper with shallow crud in protected areas (probably Care mixed with dirt). Needs a proper bath. Otherwise nice, just lightly worn. Glossy medium brown and light chocolate with a spot of darker chocolate brown toning at the left point of star 11. MDS. The repunching on the 81 is weak but visible. Comes with a nice provenance.

Ex George A. Gillette, Henry Chapman 12/19/1927:676-Floyd T. Starr, Stack's 12/6/1984:1558 (as EF40)

FLIPOVER DOUBLE STRIKE



LOT 272 1817 N-3 R2 EF40. Glossy medium chocolate brown mottled with lighter brown toning on the obverse. Flowline frost covers the protected areas on both sides. No notable marks, just light wear on the devices. MDS with flowlined fields but no trace of the "Mouse" break on top of the head.

Ex Stack's 1/14/1993:1178



LOT 273 1817 N-4 R3+ VF20. Sharpness EF45 with fine roughness covering most of the reverse and traces of microscopic roughness showing around a few stars on the obverse. No verdigris or notable contact marks. Rather glossy dark chocolate and burgundy, possibly recolored long ago. Sharply struck MDS with an additional radial die crack down from the earlier crack below star 1. One of the sharper examples known of this tough die variety, but far from perfect.

Ex Stack's 1/14/1993:1179 (as EF45, plated)

LOT 274 1817 N-6 R1 VG7. Sharpness VF25 where properly struck but dark and moderately rough. No verdigris or contact marks, but not especially attractive. MDS. However, this piece was dramatically double struck. The first strike was 20% off center to K-1 against the obverse die and a blank planchet. The partially struck planchet was then turned over, rotated, and struck a second time against both dies with the dies properly centered on the planchet. The off center obverse of the first strike is clearly visible on the right side of the reverse where it is rotated 90 degrees. Even the 1817 date is readable. There is no undertype from the first strike on the obverse since that side was struck against a blank planchet. A dramatic mint error in spite of the unattractive surfaces.



POSSIBLY FINEST 1817 N-7 NO MOUSE



LOT 275 1817 N-7 R7 (as a die state) PCGS AU Details Environmental Damage. Sharpness EF45 but covered with extremely fine roughness, strongest at OF-AMER. The toning is a slightly glossy dark olive brown and steel. No verdigris or notable marks. This cent offers nice eye appeal in spite of the dark color and microscopic roughness. Extremely rare EDS before the "Mouse Top" break on top of the head. An important example of this popular die state, possibly the finest known. Our grade is net VF25. The Holmes example, graded VF30 sharpness net F15 for microscopic roughness, brought \$4255 as lot 41 in the 5/30/2010 McCawley & Grellman/Goldberg sale. This piece is significantly nicer than the Holmes coin. A great opportunity for the serious collector of Middle Date Large Cents. Certificate #1594.97/36670069



Discovered by Henry T. Hettger-Goldbergs 2/18/2018:403



LOT 276 1817 N-8 R2 Finger Mouse PCGS graded AU58. Lustrous brown and light chocolate. Flowline luster covers the fields and protected areas and this cent has great eye appeal. No marks, essentially flawless. Looks mint state but there is light friction on the highpoints. LDS with a "Finger Mouse" break on top of the head below star 8. In addition there is a depression in the field below star 5, as always on the late state of this variety. Our grade is AU50. Certificate #1594.58/42509494



Ex McCawley & Grellman Auctions/Goldbergs 2/11/2007:402 (lot ticket included)



Lot of 3

LOT 277 Trio of Cents, 1817-1820. Includes 1817 N-9 R2 EDS VF35 net F12 for granularity, 1819 N-3 R3- MDS VF35 net VF20 for fine granularity, and 1820 N-4 R4 Small Date MDS F12 (with smooth surfaces). Inspection recommended. Lot of 3 coins.

The 1817 is ex Stack's 12/3/1992:1497



Lot of 3

LOT 278 Trio of Cents, 1817-1820. Includes 1817 N-17 R4 MDS F12 net VG10 for minor roughness, 1818 N-7 R1 Rare EDS with an uncracked obverse F12 net VG7 for microscopic roughness, and 1820 N-9 R3 Large Date F15 and very nice. Lot of 3 coins.

The first 2 are ex Fred H. Borchardt in 1985 and 1981 respectively (includes the Borchardt collection envelopes)

TERMINAL STATE 1818 N-2



LOT 279 1818 N-2 R4 PCGS graded G6. Glossy olive brown and steel. No defects, just minor contact marks consistent with the grade. Rare terminal die state with a large cud break at NITED nearly reaching the adjacent S. The date and cud are clearly defined. **Our grade is G5.** Certificate #1600.06/28905363

Ex Jules Reiver, Heritage Auctions 1/24/2006:19743 (includes the Reiver collection envelope and lot ticket)



LOT 280 1818 N-10 R1 PCGS graded MS62 Red & Brown. Frosty steel brown with about 20% of the planchet showing mellowed red, mostly on the reverse. The color may not be original but it was good enough to pass muster at PCGS. There is a shallow planchet lamination on the chin and a couple hairline scratches over ONE. MDS, the usual Randall Hoard die state. **Our grade is net AU58.** Certificate #1601.62/32964596

Ex Goldbergs 5/31/2015:256 (lot ticket included)



LOT 281 1818 N-10 R1 EF45. Sharpness near mint state but there is a dull scrape down the neck. Otherwise nice with a trace of friction on the highest points of the devices. Frosty light olive and steel brown. M-LDS, the usual Randall Hoard die state for the variety.

Ex Tom Waggoner 11/1978



EARLY CENTS AUCTIONS



LOT 282 1819/8 N-1 R1 Overdate 9 over 8 VF35. Ten points sharper but there is some microscopic planchet erosion at stars 11 & 12 and traces of extremely fine carbon on both sides. Frosty medium chocolate brown with lighter steel brown in protected areas. Sharply struck E-MDS. The overdate feature is bold. Probably would benefit from a proper bath to uncover the underlying mint luster.

Ex Stack's 2/10/1982:467



LOT 285 1819 N-9 R1 MS60. Glossy light to medium chocolate brown and steel with faded mint red covering 5-10% of the planchet, mostly on the reverse. Underlying frosty mint luster covers the fields and protected areas. The only mark worthy of mention is a spot of darker olive brown toning on the first 1 in the date. M-LDS. The repunching on the R in AMERICA is weak but visible. Most likely from the Randall Hoard of mint state cents.

Ex R. J. Rudolph Collection, McCawley & Grellman Auctions/Goldbergs 6/5/2016:309 (lot ticket included)



LOT 283 1819 N-2 R1 Large Date, Repunched 8 & 9 PCGS graded MS62 Brown. Frosty medium steel brown and light chocolate. The only mark is a tiny planchet flake on the rim over star 4, as struck. MDS with die rust on the reverse. The repunching on the 8 and 9 are clear. Looks mint state but there is a touch of friction on the highest points of the portrait. **Our grade is AU55.** The attribution is noted on the PCGS label. Certificate #36631.62/32785127



Lot of 2

LOT 286 Pair of Cents, 1819 & 1822. Includes 1819 N-9 R1 E-MDS AU55 net VF30 for light corrosion, and 1822 N-4 R2 E-MDS AU50 net VF25 for fine porosity. A sharp pair with imperfect surfaces. Lot of 2 coins.

The 1819 is ex Bowers & Merena 8/3/1983:308



LOT 284 1819 N-6 R1 VF30. Frosty light chocolate and steel brown. Flowline luster shows in protected areas and the eye appeal of this cent is outstanding for the grade. The only defect is some weakness in a couple dentils at star 2 thanks to an incipient planchet clip. MDS.



LOT 287 1820 N-13 R1 Large Date AU55. Frosty chocolate brown and steel with a small puff of lighter brown toning off the upper right point of star 4. The surfaces are satiny and the only mark is a light nick that skips through the lower junction of the E & D in UNITED. The surfaces are just a touch dull and this cent may have been retoned long ago. Sharply struck MDS, the usual Randall Hoard die state for the variety.



LOT 288 1821 N-2 R1 VF25. Sharpness EF45 but there is an obvious scratch in the field before the face, some faint hairline scratches on the portrait, and a patch of very faint roughness over star 1. Recolored frosty light to medium olive brown and steel. Sharply struck EDS. The die line from the bust tip is clear.



Lot of 3

LOT 291 Trio of Cents, 1823-1829. Includes 1823/2 N-1 R2 Overdate 3 over 2 VG10, 1827 N-6 R3 MDS VF25 net F15 for rim bumps, and 1829 N-9 R4 Small Letters VG10 net VG7 for fine granularity. Lot of 3 coins.



Lot of 2

LOT 289 Pair of Scarce Varieties, 1822 & 1828. Includes 1822 N-9 R5- EDS F12+ net VG7 for light corrosion and very dark toning, and 1828 N-4 R4 MDS VG10 net VG8 for rim nicks. Lot of 2 coins.



Lot of 3

LOT 290 Trio of Scarce Varieties, 1822-1835. Includes 1822 N-12 R4 MDS VF20 net F15 for nicks, 1830 N-10 R4+ EDS F15 net VG10 for microscopic granularity, and 1835 N-4 R4+ Head of 1834 with Small 8 EDS G4. Lot of 3 coins.



Lot of 3

LOT 292 Trio of Cents, 1824-1834, all Recolored. Includes 1824 N-3 R2 EDS VF30 net VF25, 1833 N-6 R1 E-MDS EF45 net VF25, and 1834 N-4 R2 Large Date and Small Stars LDS VF35 net VF25. The 1824 and 1834 were expertly retoned and look nice; the 1833 is darkly toned. Inspection recommended. Lot of 3 coins.

The 1824 is ex Stack's 4/29/1988:2161; the 1834 is ex Harmer Rooke 10/30/1985:152



EARLY CENTS AUCTIONS



LOT 293 1824 N-4 R2 VF25. Ten points sharper but dull thanks to extremely faint granularity under frosty dark olive brown and steel toning. No spots or verdigris. The only marks are a few tiny ticks on the rim over ST in STATES. LDS.

Ex Stack's 12/3/1992:1516



LOT 294 1825 N-1 R4 VF20+. Very attractive glossy medium brown and light chocolate. Smooth with just a few trivial ticks, none notable. A faint line of slightly darker toning arcs through stars 3-9, and that can help identify this cent. MDS with a light die crack through the base of the date. A nice example of this tougher variety.

Ex McCawley & Grellman Auctions/Goldbergs 9/10/2006:990 (lot ticket included)



Lot of 3

LOT 295 Trio of Cents, 1825 & 1827. Includes 1825 N-4 R3 MDS EF40 net F15 for granularity and dark toning, 1827 N-2 R3 MDS AU50 net VF25 for granularity and dark toning, and 1827 N-5 R2 EDS VF25 net F15 for very fine granularity. Inspection recommended. Lot of 3 coins.

The 1825 is ex Coin Galleries MBS 4/15/1992:2372; the 1827 N-5 is ex Coin Galleries MBS 11/15/1989:2096.

1825 OVER OFF-CENTER BROCKAGE



LOT 296 1825 N-2 R2 G5. Glossy medium brown and light chocolate. Smooth and nice for the grade; a minor rim bruise at star 10 is the only notable mark. Struck two times. The first strike was an obverse brockage about 90% off center and the second strike was centered but flipped over. An arc of the incuse obverse strike shows at star 2 and the normal strike shows at TA in STATES.



LOT 297 1825 N-9 R2 VF30. Sharpness EF40 but nicely recolored glossy medium reddish brown. No marks, spots, or other defects. MDS without any die cracks. This cent has nice eye appeal in spite of the recoloring.

Ex Stack's 2/2/1980:734



LOT 298 1826 N-5 R2 VF20. At least 10 points sharper but recolored glossy chocolate and reddish brown. Smooth and free of any notable marks. MDS with rim cud breaks from star 5 nearly to star 7. Has the eye appeal of a significantly higher grade.

Ex Stack's 9/4/1991:54

RARE DIE STATE 1826 N-9



LOT 299 1826 N-9 R2 VF35. Five points sharper and quite nice except for a rim nick and rim bruise at OF. Frosty light steel brown with some woodgrained darker brown toning on the right side of the obverse. M-LDS with a die crack that outlines a future cud break over the right side of star 7. A rare intermediate die state for the variety.

Ex Allen Ross (via Artcotile, eBay) 4/2011



LOT 300 1827 N-1 R2 EF45+. Glossy medium chocolate brown with mint frost covering the protected areas on both sides. A cent with excellent eye appeal and just a light touch of friction on the highpoints. The only mark is a dull rim nick right of the F in OF. Nicely struck MDS with a tiny rim cud at star 5. Removed from a PCGS slab graded AU55 (older generation PCGS label #1651.55/6455851 included).

Ex Superior 5/31/1992:551 (via Tom Reynolds, lot ticket included)



LOT 301 1827 N-8 R3 VF30. Sharpness EF45 and very attractive, but a glass reveals faint, very fine hairline scratches on the obverse, mostly on the portrait and in the field to the left. The scratches do not break the toning. Glossy light chocolate brown with golden tan faded down from mint color in the protected areas. A small diagonal nick between the lower points of stars 7 & 8 can help identify this cent. The reverse is choice. MDS with fine die cracks on the obverse.

Ex Stack's 10/21/1982:687



EARLY CENTS AUCTIONS



LOT 302 1827 N-10 R4+ F15. Glossy light to medium chocolate brown with a small puff of lighter brown toning at RI in AMERICA. Smooth and attractive showing only minor contact marks. A barely visible rim bruise right of the date and a very light scuff in the dentils at star 6 can help identify this cent. MDS with minor crumbling at the brow and under the nose.

Ex Don Weathers, 1989 EAC Sale, lot 286-March Wells, McCawley & Grellman Auctions/Superior 2/7/2000:1890-Dr. Wallace Lee, McCawley & Grellman Auctions/Superior 5/25/2003:723 (includes the Wells collection envelope and last 2 lot tickets)



LOT 303 1828 N-2 R2 VF25. Sharpness EF40 but lightly burnished and retoned glossy light olive brown on the devices blending to darker olive brown in protected areas. No spots or notable contact marks, and the eye appeal is quite nice. MDS. The line between the 2 & 8 touches the bottom of the second 8 but not the adjacent 2.

Ex Coin Galleries 7/21/1982:2518



LOT 304 1828 N-11 R2 EF40. Glossy light chocolate and steel brown with frosty lighter brown in protected areas, especially on the reverse. A very nice cent with smooth surfaces and great eye appeal. EDS. The repunching at D-S and S-O is clear.

Ex McCawley & Grellman Auctions/Goldbergs 9/13/2015:277 (lot ticket included)

WRIGHT PLATE COIN



LOT 305 1828 N-11 R2 EF45. Five points sharper but there are a few very fine scratches well hidden in the hair at the top of the ear and a couple similar marks in the hair above the eye. Otherwise the notable marks are a horizontal nick on the jaw and a shallow planchet flake in the field off the chin. Glossy medium brown and light chocolate blending to olive brown in protected areas. MDS. There are microscopic radial die flowlines in the fields but the repunching on the first S in STATES and O in OF is still clear. Graded AU50 by Del Bland. This is the plate coin for the variety in the John Wright reference on the cents of 1816-1839.

Ex Blaise Dantone (Peachtree Coin Shop)-R. S. Brown, Jr., Superior 9/30/1986:656-McCawley & Grellman Auctions/Goldbergs 6/5/2016:330 (Brown collection envelope and both lot tickets included)

SHARP 1828 N-12



LOT 306 1828 N-12 R3+ VF25+. Sharpness EF40 but there are traces of very fine roughness and verdigris around the hair bun and some light diagonal scratches at OF AMER. Frosty chocolate brown and steel with a darker area of olive brown toning (not carbon) down from the chin. Sharply struck EDS. One of the best-detailed examples known of this tough die variety.



LOT 307 1830 N-4 R2 Large Letters EF45. Sharpness AU55 with attractive, lustrous surfaces, but there are many light contact marks scattered over both sides. None of the marks is significant but there are far too many for the sharpness grade. The only mark visible to the unaided eye is a nick at the lower left point of star 3. A small planchet void on the rim over the first A in AMERICA (as struck) is a good identifying defect. Lustrous light olive and steel brown with traces of lighter brown and tan in some of the protected areas. MDS showing die cracks on both sides including one up to the dentils from the top of the E in UNITED. A partial double profile is visible on the forehead and tip of the nose (a feature often seen on this variety). Comes with an ANACS photo grading certificate as AU55/55 (ANACS certificate #E-8857-R included)

Ex Roxbury Coin Investment Service, Inc. 6/26/1982

RARE DIE STATE



LOT 308 1830 N-4 R2 Large Letters G5. Slightly sharper with minor roughness and a few small pits that contain verdigris. Slightly glossy olive brown with lighter steel brown toning on the devices. Nothing special except for the die state. M-LDS with a sunken retained cud break under the date.



LOT 309 1830 N-8 R1 Large Letters EF40. Very attractive frosty medium brown with mint luster in protected areas. Essentially flawless, just lightly worn. LDS with a die crack from the bust tip.

Ex Heritage Auctions (as NGC AU53) 12/18/2011:7116

KEY 1830 N-9



LOT 310 1830 N-9 R6- VG8. Sharpness F15 but covered with uniform fine to moderate granularity. No verdigris, only a few minor marks. The notable marks are a small nick close over the bust and another between the T and A in STATES. Dark olive brown and chocolate. No more than two dozen known and most of those are low in grade with significant problems. One of the keys to the Middle Date Cent series.



LOT 311 1831 N-1 R1 Large Letters VF30. Glossy light brown blending to light olive in protected areas. Smooth and attractive with just a few minor marks including a tiny planchet flake below the right point of star 4 and a small spot of darker brown toning below the flake. Scarce EDS with sharp dentils around both sides and a faint die crack through the top of the date to stars 1-4.



LOT 312 1831 N-2 R2 Medium Letters VG8+. Glossy light chocolate brown. Smooth and problem-free, just worn. M-LDS. There is a curved planchet clip left of stars 2-3.



LOT 313 1831 N-7 R1 Large Letters PCGS graded AU58. Frosty medium steel brown and chocolate with underlying very faded red showing in protected areas, especially on the reverse. The surfaces are lustrous and there is just a hint of friction on the highest points of the devices. Would be a choice cent if not for a light scuff of fine scratches that break the toning at star 4 and on the highest point of the cheek. LDS with crumbling in the notch on the right side of the R in AMERICA. Our grade is AU50. Certificate #1678.58/04792311



Lot of 3

LOT 316 Trio of Cents, 1831 & 1838. Includes 1831 N-11 R2 Small Letters MDS VF30 with nice color and surfaces, 1831 N-11 R2 Small Letters TDS with a cud at TES filling the top of that S VG8, and 1838 N-4 R2 M-LDS VF35 net VF25 for nicks. Lot of 3 coins.



Lot of 2

LOT 314 Pair of Cents, 1831 & 1837. Includes 1831 N-7 R1 Large Letters MDS F15+, and 1837 N-11 R1 Beaded Hair Cord MDS VF30+. Both are smooth and brown with nice eye appeal. Lot of 2 coins.



LOT 317 1831 N-11 R2 Small Letters NGC graded VF25. Glossy medium chocolate brown with traces of lighter brown in protected areas. A tiny rim bruise below the second 1 in the date is the only notable mark. Terminal die state with a cud break at TES that fills the top of that S. Our grade is F15. Certificate #3743522-024



LOT 315 1831 N-9 R2 VG8. Sharpness F12 but covered with nicks including a dull one on the end of the nose. A small but relatively strong rim dent at the first S in STATES is the most-notable mark. Glossy light to medium chocolate brown. Rare intermediate die state with a raised internal cud break between die cracks from star 3 to star 5. Comes with a nice provenance.

Ex Clinton Hollins 2/1/1982-Jack H. Robinson, Superior 1/29/1989:951-Dennis Mendelson, Superior 2/3/1991:425-Wesley A. Rasmussen-Dennis Mendelson, McCawley & Grellman Auctions/Superior 9/21/1998:1523 (last lot ticket and Mendelson collection envelope included)



EARLY CENTS AUCTIONS



Lot of 4

LOT 318 Quartet of Scarce Die States, 1831-1839. Includes 1831 N-12/.5 R7 (as a die state) M-LDS with a 1-point retained cud break at star 13 G4, 1837 N-2 R7 (as a die state) TDS with two internal cud breaks including one down from star 3 (later than any in the Dan Holmes Collection) G6, 1837 N-9 R1 Beaded Hair Cord LDS with clearly defined rim cuds from star 11 to star 13 VF25 net VF20 for recoloring, and 1839 N-4 R1 Silly Head LDS (what some call N-17) VF30 net VF25+ for nicks. Lot of 4 coins.



LOT 319 1832 N-1 R2 Medium Letters VF35. Ten points sharper and it looks great, but there are two tiny holes punched in the edge, one at the top and one at the bottom (perhaps to attach the coin to something). Otherwise the only mark is a very light and easily missed rim bruise right of star 13. Glossy medium brown and light chocolate. Sharp and smooth. MDS.

Ex John S. Ashby 10/1981



LOT 320 1833 N-2 R2 EF45. Frosty light brown with slightly darker steel brown toning on the highpoints. There are a couple small puffs of darker olive brown toning at the bust and neck and a speck of dark toning at the leaf tip below the second T in STATES. MDS. The fields are flowlined but the repunching on the O in ONE and T in CENT is clear. Struck with the reverse rotated 35 degrees clockwise. Removed from a PCGS slab graded AU58 (PCGS label #1696.58/31910117 included)



LOT 321 1833 N-3 R1 EF45+. Frosty medium chocolate brown and steel with lighter brown in protected areas. Lustrous and attractive with only trivial marks. A tiny nick in the hair over the B in LIBERTY and another under the right corner of the eye can help identify this cent. M-LDS with flowlined fields and crumbling in the dentils left of star 4. Removed from a PCGS slab graded AU58 (PCGS label #1696.58/30369341 included).



LOT 322 1833 N-5 R1 Repunched 8 MS60. Lustrous light greenish olive and steel. Satiny mint frost covers this cent and it has excellent eye appeal. No spots or stains, just a few nicks on the cheek and neck from choice. M-LDS. The repunching on the 8 is clear and the repunching at ICA in AMERICA is dull but visible. The reverse is rotated 25 degrees clockwise.

Ex Dr. Kenneth Goodman, Goldbergs 2/18/2018:454 (lot ticket included)



LOT 323 1833 N-6 R1 EF45. Very slightly sharper but covered with a very thin coat of lacquer or "Care". Glossy light olive and steel brown with light bluish steel overtones on the reverse and underlying luster in the fields and protected areas. A small spot of darker toning under star 5 can help identify this cent. M-LDS. The reverse is rotated 35 degrees CW.

LOT 324 1834 N-1 R1 Small 8 with Large Stars EF45. Glossy chocolate and light olive with frosty tan in some of the protected areas. Essentially flawless, just lightly worn on the devices. MDS with die cracks through most of the stars and crumbling at star 4. Repunching inside the C in AMERICA is still visible.

Ex 2009 EAC Sale:342-Rod Burress-John Koebert, McCawley & Grellman Auctions/Goldbergs 9/13/2015:291 (both lot tickets included)

Ex Coin Galleries Mail Bid Sale 7/14/1993:1800 (plated)

WRIGHT PLATE COIN



LOT 325 1834 N-1 R1 Small 8 with Large Stars EF45. Sharpness closer to mint state but there are minor stains around the date, the Y in LIBERTY, and star 11. Traces of extremely faint roughness show in those stained areas; otherwise the surfaces are lustrous and choice. Frosty tan and light brown with slightly darker steel brown toning in the stained areas. MDS. The fields are flowlined and there is crumbling on the right side of star 4, but the repunching inside the C in AMERICA is visible. This is the plate coin for the variety in John Wright's "The Cent Book, 1816-1839."

Ex Lester Merkin 9/20/1967:113-R. S. Brown, Jr., Superior 9/30/1986:747



LOT 326 1835 N-1 R1 Head of 1834, Large 8 EF45+. Choice light to medium olive with peeps of faded mint red remaining visible in protected areas. Satiny mint frost covers much of this cent, especially on the reverse, and the eye appeal is outstanding. The only marks are some tiny nicks on the obverse, none notable. E-MDS with smooth, slightly reflective fields on the obverse and without the additional radial die crack to the dentils under star 11. The reverse looks mint state but there is light wear on the highpoints on the obverse.

Ex Coin Galleries 11/17/1981:1487



LOT 327 1835 N-8 R1 Head of 1836 NCS AU Details Improperly Cleaned. Glossy chocolate and steel brown with slightly lighter brown toning in protected areas on the reverse. I see no evidence this cent was “Improperly Cleaned” but it may have been coated with Care or Blue Ribbon at one time. The only marks are a thin diagonal nick right of star 2 and a tiny scratch over the O in ONE. EDS with an uncracked obverse. Our grade is VF35. The attribution and Reiver provenance are noted on the NCS label. Certificate #5077463-013

Ex Jules Reiver, Heritage Auctions sale #131552, lot 29334 (lot ticket included)

TERMINAL 1835 N-9



LOT 328 1835 N-9 R4 Large 8 & Stars AG3. Several points sharper with an ugly dent/gouge at star 3 and the opposing CA in AMERICA. In addition there are numerous small nicks scattered over both sides, the date is weakened by marks, and the rim was smoothed at stars 11-12. Not a pretty cent except for the nice glossy light to medium brown toning. But the die state is special. Extremely rare terminal die state with cud breaks on both sides. In addition the reverse was rotated 150 degrees clockwise and badly misaligned to K-4.5. Only 4 examples are known with cud breaks on both sides (first at ERIC and later at stars 10-11.5). The cud break over ERIC on this example is only partially visible due to the die misalignment. It appears the obverse cud on this example is RETAINED, not complete as seen on the piece sold as lot 441 in the 2007 EAC Sale (a granular F12 that brought \$3025). Something quite unusual happened to these dies at the end of their lives, and the result was a few very odd strikes for us to enjoy. A piece for the die state specialist.

Ex Henry T. Hettger-Robert Soltisiak



LOT 329 1835 N-10 R4+ Head of 1834, Small 8 F15+. Slightly sharper but there is some verdigris at ST in STATES. Otherwise the surfaces are smooth and the eye appeal is excellent. Glossy light olive and chocolate with medium brown toning on the devices. E-MDS with die cracks on both sides.

Ex Doug Bird 1/17/1990-R. S. Brown, Jr., Superior 1/27/1996:608-Maine Gold & Silver, Goldbergs 1/31/2021:134 (lot tickets and Brown collection envelope included)



LOT 330 1835 N-10 R4+ Head of 1834, Small 8 VG8. Sharpness near VF20 but covered with fine roughness on all but the highpoints. No verdigris but there is a shallow, diagonal planchet fissure through the bust and two rim bruises: one at star 11 and another at IT in UNITED. EDS with the reverse rotated 45 degrees clockwise.

Ex Henry T. Hettger



LOT 331 1835 N-12 R4 Head of 1834, Small 8 NGC graded XF40. Glossy light to medium chocolate brown and steel. Smooth and void of any notable defects, just moderately worn. A trivial rim bruise over TA in STATES is the best identifying mark. E-MDS. The obverse is cracked, as always, but the radial crack from the outer point of star 9 has not formed. Our grade is VF20+. The attribution is noted on the NGC label. Certificate #1895168-007

Ex Chris McCawley 8/2012

EXTREMELY RARE TERMINAL 1835 N-12



LOT 332 1835 N-12 R4 Head of 1834, Small 8 VF20. Glossy light olive and reddish brown. Smooth surfaces with only minor marks including a dull diagonal nick off the upper right point of star 1. Extremely rare terminal die state with a strong cud break from star 8 to star 9 nearly touching the outer point of star 9. In addition there is a fine double profile on the lips, chin, stars, and LIBERTY (from die shift or "machine doubling"). Tied for finest known honors of the die state with one other example that has more defects. Noyes graded VF20 net F15, his photo #38501. This is the plate coin for the variety in the John Wright reference on the cents of 1816-1839. An important piece for the die state specialist.

Ex Denis Loring 4/1988-Dennis Mendelson, Superior 2/3/1991:494-March Wells, McCawley & Grellman Auctions/Superior 2/7/2000:1995 (includes both collection envelopes and lot tickets)



Lot of 2

LOT 333 Pair of 1835 N-12 Die States. Includes one M-LDS with a sunken retained cud break over star 9 VG8 and one LDS example with a fully raised cud break over star 9 and the reverse rotated 40 degrees clockwise VG8 net VG7 for a couple small rim bruises. A neat pair of die states. Lot of 2 coins.

The second one is ex Dick Punchard FPL 4/2/1992-Chris McCawley FPL 12/30/1998-Daniel W. Holmes, Jr. (includes the Punchard and Holmes collection envelopes)



EARLY CENTS AUCTIONS



LOT 334 1835 N-19 R5 Head of 1836 F12. A few points sharper but there are some contact marks on otherwise nice surfaces. The most obvious marks are a dull nick on the rim at star 1 and another over the first S in STATES. In addition there are two fine diagonal scratches at the tip of the bust. Rather glossy medium chocolate brown with lighter brown toning on the devices producing a nice two-tone appearance. A fine double profile shows from the forehead down to the throat.



LOT 337 1837 N-1 R3 Plain Hair Cord, Medium Letters AU50+. Slightly sharper but there are some small stains of dark toning at TAT in STATES. Frosty light to medium brown with slightly darker brown toning on the highpoints. Sharply struck EDS. The die line over the F in OF is sharp. Removed from an NGC slab graded MS61 Brown (NGC label #3889107-005 included, and it shows the attribution).

Ex Glenn Wallace-Ace Reiswig 11/1975-Superior 9/7/1997:556-Colonel Steven K. Ellsworth-2007 EAC Sale, McCawley & Grellman Auctions 4/28/2007:450



LOT 335 1836 N-1 R1+ PCGS graded MS63 Brown. Lustrous bluish steel brown and light chocolate with a splash of darker steel brown toning covering the hair right of the neck. No roughness or marks, but there are some very faint brushlines on the obverse. LDS with die cracks on both sides. **Our grade is MS60.** Certificate #1726.63/32470244



LOT 338 1837 N-1 R3 Plain Hair Cord, Medium Letters AU50+. Frosty light brown with darker steel brown toning on the highpoints. The fields are lustrous and this cent has great eye appeal. The only marks are a small depression at the left point of star 4 and a light nick in the field under the chin. MDS.

Ex John S. Ashby 1979



LOT 336 1836 N-3 R1 EF45. Five points sharper but there is a light (and very easily missed) rim bruise at star 13. Otherwise this cent is choice. Frosty tan and light brown with darker steel brown toning on the highpoints. LDS with a cud break over star 6 and a die crack arcing across the upper half of the reverse.

Ex Stack's 1/14/1993:1236



LOT 339 1837 N-3 R1 Plain Hair Cord, Medium Letters EF40+. Sharpness AU50 but recolored frosty dark chocolate brown with traces of light greenish olive toning around the date and a few of the stars. The reverse looks mint state and there are no notable marks. Sharply struck E-MDS.

Ex Coin Galleries Mail Bid Sale 2/15/1995:152 (lot ticket included)



LOT 340 1837 N-4 R2 Plain Hair Cord, Medium Letters EF45. Five points sharper but there is a small, inconspicuous scratch at the dentil tips under star 3, a nick on the D in UNITED, and another small nick on the O in OE. Otherwise this piece is choice and the eye appeal is outstanding. Frosty tan and light brown with slightly darker steel brown toning on the highpoints. MDS.


Ex Tom Reynolds 3/23/1996



LOT 343 1837 N-6 R2 Plain Hair Cord, Medium Letters AU55. Frosty light to medium brown blending to light olive and bluish steel in protected areas. Sharply struck and quite attractive with just a hint of friction on the highest points of the devices. The only marks are a diagonal nick in the field off the chin and a fine diagonal nick mid-jawline. EDS+ with microscopic radial die flowlines in the fields. The curious die lines at the berry under TE in UNITED are sharp. Removed from an NGC slab graded MS61BN (NGC label #3459228-011 included).

Ex Jack H. Beymer 11/21/2012-John Pijewski, Goldbergs 9/1/2019:258 (includes the Pijewski collection envelope and lot ticket)



LOT 341 1837 N-5 R2 Plain Hair Cord, Small Letters  NGC graded MS62 Brown. Sharpness close to mint state but recolored glossy light olive with traces of iridescent reddish steel on the upper part of the reverse. The obverse has excellent eye appeal and the toning on that side looks original but the iridescent toning at the top of the reverse exposes the retoning. No marks or other defects. MDS. The earlier die line connecting the feet of the I & T in UNITED is gone. **Our grade is AU55.** Certificate #3443256-012

Ex Doug Bird 4/2013-Terry Denman-2018 EAC Sale, 5/5/2018:402 (as MS60)-John Pijewski, Goldbergs 9/1/2019:257



Lot of 2

LOT 342 1837 N-5 R2 Plain Hair Cord, Small Letters EF40+. Attractive glossy light to medium brown with frost covering the protected areas on both sides. Essentially flawless except for a thin, light diagonal nick right of star 2. Close to EF45. MDS.

Ex Stack's 4/29/1988:2183

LOT 344 Pair of 1837 Cents. Includes N-6 R2 Plain Hair Cord EDS VF35 and N-12 R3 Beaded Hair Cord with "Accessory E" MDS VF35. Both are ten points sharper but nicely recolored brown and chocolate with good eye appeal. Lot of 2 coins.

The N-6 is ex Stack's 4/29/1988:2184 and the N-12 is ex Tom Reynolds 10/21/1995



EARLY CENTS AUCTIONS



LOT 345 1837 N-8 R1 Plain Hair Cord, Medium Letters AU58. An attractive frosty mint state cent that has a few small nicks, including two on the cheek and one on the rim nick at star 3. Lustrous light to medium chocolate brown with lighter golden tan in protected areas. No spots or stains, and the eye appeal is excellent. MDS. The die lines over ERI in AMERICA are dull but visible.

Ex Herman Halpern, Stack's 3/16/1988:489-McCawley & Grellman/Superior 2/8/1998:1188-R. J. Rudolph Collection, McCawley & Grellman Auctions/Goldbergs 6/5/2016:346 (includes the last lot ticket)



LOT 346 1837 N-9 R1 Beaded Hair Cord AU50+. Frosty olive brown and bluish steel with slightly lighter brown toning inside the wreath. The fields are flowlined and satiny. A small nick over the bust is the only notable mark. M-LDS with die cracks and small rim cuds on the obverse. Our grade is AU55. The attribution is noted on the NGC label.

Ex Stack's Bowers, lot 90029 in an unrecorded sale (lot ticket included)



LOT 347 1837 N-13 R2 Plain Hair Cord, Med Ltrs PCGS graded MS63 Brown, CAC Approved. Frosty light to medium steel brown with mellowed mint red in protected areas on both sides. The surfaces are lustrous but the luster is a bit subdued by a thin layer of natural oxidation. MDS, The repunching on the N in UNITED is dull but visible. **Our grade is MS60.** The attribution is noted on the PCGS label. Certificate #432837-001



LOT 348 1837 N-13 R2 Plain Hair Cord, Medium Letters AU50. Choice frosty light brown delicately mottled with slightly darker olive brown on the reverse. Looks mint state but there is a touch of friction on the highest points of the devices and just a few trivial marks. E-MDS.

Ex Tom Reynolds 3/23/1996



LOT 349 1837 N-14 R2 Plain Hair Cord, Medium Letters AU50. Frosty medium brown and light chocolate with satiny mint luster in the fields and protected areas. No notable marks or other defects, just tiny ticks on the face and light friction on the highpoints. A puff of slightly darker steel toning under the N in CENT can help identify this cent. MDS with the usual die cracks on both sides.

Ex Gary M. Ruttenberg, McCawley & Grellman Auctions 8/17/1996:407-Tom Reynolds 8/7/1998

WRIGHT PLATE COIN



LOT 350 1837 N-15 R3 Plain Hair Cord, Medium Letters EF45. Choice glossy medium brown and light chocolate with a swipe of slightly darker chocolate brown on the upper left of the reverse. Mint frost shows in protected areas outside the wreath and this cent has excellent eye appeal. The only marks are a tiny rim nick left of star 5 and a pair of tiny ticks at the line under CENT. M-LDS. The area outside the crack over ERICA is starting to appear as a retained cud break on a slightly different plain than the rest of the field. This is the Wright plate coin for the variety. A neat die state and it comes with an impressive provenance.

Ex French's 10/26/1956:481-Dr. Ken Sartoris-Del Bland-C. Douglas Smith-Jerry A. Bobbe-Del Bland 1977-John D. Wright Collection, 2009 EAC Sale, McCawley & Grellman Auctions 4/18/2009:372-Goldbergs 9/1/2019:434 (includes the Bobbe and Wright collection envelopes and the last two lot tickets)



LOT 351 1837 N-16 R3 Plain Hair Cord, Medium Letters EF45. Glossy light to medium brown with frost covering the protected areas on both sides. The only notable mark is a dull nick or tiny scrape on the bust. MDS.

Ex Stack's 12/3/1998:1153 (as MS60, lot ticket included). Comes with an old collector envelope with comments from Walter Breen.



LOT 352 1838 N-1 R1 EF45+. Frosty medium brown with subtle overtones of light bluish steel and sea green. There are two tiny rim nicks under the 3 in the date and a small splash of dark crud at the left foot of the N in ONE. Sharply struck E-MDS with a narrow but clearly defined rim cud at star 1. The fields are hard and slightly reflective thanks to a fresh die polishing. A nice cent, close to AU50.

Ex Stack's 9/9/1987:461



LOT 353 1838 N-6 R1 PCGS graded AU58. Frosty medium brown and light chocolate with peeps of faded mint red showing on the obverse. No notable defects, only light friction on the highpoints. MDS. Our grade is AU50. Certificate #1741.58/34427717

Ex Heritage Auctions #131809, lot 27057 (lot ticket included)

LOT 354 1838 N-6 R1 NGC graded AU55. Glossy medium chocolate blending to darker olive brown in protected areas. Smooth and attractive, just lightly worn showing only trivial marks. Nicely struck EDS. Our grade is VF35+. Certificate #5857939-001



EARLY CENTS AUCTIONS



LOT 355 1838 N-8 R1 PCGS graded MS62 Brown. Frosty medium brown with a splash of slightly darker olive brown toning on the left half of the obverse. Traces of faded mint red show on the reverse and the eye appeal is excellent. The only marks are a faint planchet lamination up from the upper point of star 4 (as struck) and a tiny nick on the rim under the first 8 in the date. MDS. **Our grade is AU58.** The attribution and Tucker provenance are noted on the PCGS label. Certificate #37201.62/81766011

Ex Dr. Robert J. Shalowitz-R. S. Brown, Jr., McCawley & Grellman Auctions 8/16/1991:194-Dr. Bruce Tucker Collection, McCawley & Grellman Auctions/Goldbergs 1/12/2017:469 (includes the Brown collection envelope and both lot tickets)



LOT 356 1838 N-9 R3 PCGS graded MS63 Brown. Frosty light olive and steel. A very attractive cent, free of any spots, stains, or notable marks. The best identifying mark is a microscopic dent on the upper lip, but you will need a glass to see it. LDS with a rim cud break from right of star 12 clockwise to under the left edge of the date (the rim cud is strong at star 12 but fades away before reaching the date thanks to the narrow rim in that area). The attribution is shown on the PCGS label. **Our grade is MS60.** Certificate #37204.63/26560663

Ex McCawley & Grellman Auctions/Goldbergs 6/4/2017:561 (lot ticket included)



LOT 357 1839 N-2 R2 Head of 1838 AU55. Frosty medium brown and steel. Essentially flawless showing only a trace of friction on the highpoints. MDS. Removed from an NGC slab graded AU58 (NGC label #3889107-008 included, and it shows the attribution).



LOT 358 1839 N-2 R2 Head of 1838 AU50. Lustrous light brown. Looks mint state but there is a hint of friction on the highest points of the devices. The only marks are a dull rim nick at star 5 and another at star 9 plus a pair of faint scratches below star 5. MDS.

Ex Tom Reynolds 9/7/1996



Lot of 2

LOT 359 Pair of ANACS graded 1839 Cents. Includes N-4 R1 Silly Head E-MDS ANACS graded VF30 (our grade VF20), and N-6 R2 Booby Head (may be N-11, can't be sure) ANACS graded VG8 (our grade VG7 but there is a planchet lamination on the obverse). Both have the attribution on the ANACS label. Lot of 2 slabbed coins. Certificate #60447381000 - 61910411000



LOT 360 1839 N-8 R1 Head of 1840 PCGS graded VF30. Glossy light olive and medium chocolate brown. Smooth and void of defects, just lightly worn. MDS. **Our grade is VF20+, close to VF25.** The Head of 1838 feature is noted on the PCGS label. Certificate #1744.30/32749887



LOT 361 1839 N-12 R4 Booby Head VG8. Slightly sharper but there are some very tiny rim bruises, none notable. Glossy medium brown and steel blending to light chocolate on the reverse. MDS with a die crack through star 4 to the nose.

Ex Henry T. Hettger



LOT 364 1840 N-8 R1 Large Date VF35. Ten points sharper but lightly cleaned and retoned steel brown and chocolate with lighter reddish steel brown in protected areas. The only marks are a few spots on the reverse including a carbon spot on the upper half of the E in CENT. TDS, die state d, with clearly defined rim cud breaks from star 10 to the date.



LOT 362 1839 N-15 R5+ Booby Head ANACS Fine-12 Details Damaged & Cleaned. Recolored light olive and medium brown. No corrosion but there are lots of nicks scattered over both sides plus several rim bruises, perhaps a dozen or so. The strongest rim bruise is at star 13. The attribution points are clear. Our grade is F12 sharpness net VG7. The attribution is noted on the ANACS label. Certificate #61910402000



Lot of 2

LOT 365 Pair of Cents, 1841 & 1842. Includes 1841 N-2 R2 EDS (a) EF45 net VF30 for recoloring, and 1842 N-4 R2 Large Date MDS (b) VF35 net VF25 for recoloring. Both are smooth glossy brown with decent eye appeal. Lot of 2 coins.

The 1841 is ex Tom Waggoner in 1979; the 1842 is ex Stack's 1/17/1996:138 (lot of 2, lot ticket included)



Lot of 2

LOT 363 Pair of Cents, 1840 & 1843. Includes 1840 N-4 R3 Small Date MDS (b) with the reverse rotated 25 degrees CCW EF40+ net VF25 for whizzing and retoning, and 1843 N-3 R3 Head and Reverse of 1842 MDS (b) EF40 net VF20 for whizzing and retoning. Both look OK to the unaided eye. Lot of 2 coins.

Both are ex Tom Waggoner in 1973 & 1974



LOT 366 1842 N-3 R3 Large Date EF40. A sharp cent that looks choice mint state but it has been whizzed and retoned. Frosty light reddish brown. The only mark is a carbon spot low on the neck. LDS, die state b, with finely flowlined fields on both sides.

Ex Ray Chatham-John Ashby auction 10/1980:523



EARLY CENTS AUCTIONS



Lot of 2

LOT 367 Pair of Cents, 1842 & 1855. Includes 1842 N-5 R3 Large Date EDS (a) AU50 net VF30 for light burnishing and retoning, and 1855 N-12 R1 Upright 55 MDS (b) AU50 net VF35 for light burnishing and retoning. Both are smooth and glossy brown with nice eye appeal. Lot of 2 coins.

The 1842 is ex Stack's 1/17/1996:138 (lot of 2); the 1855 is ex Coin Galleries MBS 7/14/1993:1831



LOT 368 1842 N-6 R1 Large Date EF40. Five points sharper but very lightly cleaned on the highpoints. Frosty light to medium brown with lighter tan highpoints. The only notable mark is a bit of verdigris at the end of the wreath ribbon. EDS, die state a. The lumps on the obverse are clear and the fine die lines on the reverse are visible.



LOT 369 1843 N-2 Petite Head, Small Letters AU55. Lustrous medium steel brown very delicately woodgrained with chocolate on the obverse. Looks mint state but there is a trace of friction on the highest points of the devices. The only marks are a couple faint hairline scratches under CENT. Nicely struck E-MDS, die state b, with a rim cud break over UN. Removed from a PCGS slab graded MS62 Brown (older generation PCGS label #1844.62/9255326 included).

Ex Mid-Valley Coin 2/1990



LOT 370 1843 N-4 R1 Head of 42, Reverse of 44 NGC graded AU58. Frosty light olive brown with darker olive on the lower half of the obverse. The holder is old and scuffed so proper viewing is a challenge, but the cent appears to be quite nice, just lightly worn on the devices. MDS, die state b, with a rim cud below the 1 in the date. Our grade is VF35. The attribution is noted on the NGC label. Certificate #92085-012



LOT 371 1843 N-9 R3 Petite Head, Small Letters with Repunched 843 EF45. Glossy medium brown with mint frost showing in protected areas. Just very light wear on the devices and the only notable mark is a dull diagonal nick high on the cheek. M-LDS, die state c, with a rim cud break from star 6 to star 7. The repunching on the date is dull but still visible on the 8 & 4.

Ex McCawley & Grellman Auctions/Superior 2/24/2003:313 (lot ticket included)



Lot of 3

LOT 372 Trio of Cents, 1843-1850. Includes 1843 N-12 R1 Petite Head, Small Letters NGC XF Details Environmental Damage (NGC label says 1845) VF35 net F15 for light corrosion, 1846 N-13 R4 Tall Date MDS (c-) F15+, and 1850 N-24 R4+ MDS F12+ net VG10 for nicks. The last two are attractive glossy brown and chocolate. Lot of 3 coins. Certificate #2618496-029





LOT 373 1844 N-3 R2 Repunched 18 EF45. Sharpness near mint state but there are some faint hairlines on the obverse and a small carbon spot over star 6. Frosty medium brown and light chocolate. MDS, die state c, with a series of small rim cud at stars 8-9. The fine die crack through STATE has not formed and the repunching on the 18 is still sharp. The hair at the ear is softly struck, as usual on this variety, but the remainder of the cent has mint state eye appeal. Comes with a nice provenance.

Ex M. H. Bolender 11/10/1951:711-Dr. Kenneth Sartoris-Del Bland-R. S. Brown, Jr., Superior 9/30/1986:978 (as AU55)-Walter Dudgeon, McCawley & Grellman Auctions 7/30/1994:223-Dr. Wallace Lee, McCawley & Grellman Auctions/Superior 5/27/2001:1246 (includes the Brown collection envelope and all 3 lot tickets)



LOT 376 1844 N-7 R2 EF40. Frosty medium brown and tan with a couple tiny peeps of faded mint red on the reverse. No defects, just light wear on the highpoints. EDS, die state a.

Ex McCawley & Grellman Auctions/Superior 5/29/2005:1738-Fred Iskra, Goldbergs 9/3/2018:85 (Iskra collection envelope and both lot tickets included)



LOT 377 1845 N-2 R1 AU55. Frosty medium steel brown and light chocolate with mint luster in protected areas. The only mark is a tiny tick in the center of the cheek. A choice cent with just a hint of rub on the highpoints. E-MDS, die state a.

Ex McCawley & Grellman Auctions/Superior 2/24/2003:325 (lot ticket included)



Lot of 2

LOT 374 Pair of Cents with Rim Cuds, 1844 & 1845. Includes 1844 N-3 R2 Repunched 18 LDS (e) with a strong rim cud on the obverse VF30 net F12 for granularity, and 1845 N-12 R3 LDS (d) with a narrow rim cud at stars 3-4 EF40 net VF30 for minor contact marks. Lot of 2 coins.



Lot of 3

LOT 378 Trio of Cents, 1845-1853. Includes 1845 N-2 R1 MDS AU50 net VF25 for whizzing and retoning (looks really nice at first glance), 1846 N-12 R1 Tall Date MDS (but with a couple minor rim bumps that could be mistaken for rim cuds) VG10, and 1853 N-19 R1 Repunched 853 M-LDS with the obverse badly misaligned to K-9 F12. Lot of 3 coins.



LOT 375 1844 N-5 R1 Repunched 4 VF35. Five points sharper with a few small nicks on otherwise choice surfaces. Glossy medium brown. Late die state (d) with a strong rim cud from 18 to star 1.



EARLY CENTS AUCTIONS



LOT 379 1845 N-10 R3- ANACS graded AU50. Glossy chocolate with frost in protected areas. An attractive cent with only light wear on the highpoints. The only notable marks are a few rim nicks on the reverse and a minor rim dent over the F in OF. MDS, die state b, with die cracks on the reverse and a slightly raised retained cud break forming over the E in UNITED. Our grade is EF40+. The attribution is noted on the ANACS label.



LOT 381 1845 N-15 R4 EF40+. Sharpness AU50 but nicely recolored frosty dark steel and olive brown. Otherwise essentially flawless with excellent eye appeal. Scarce EDS, die state a, with sharp horizontal die lines from the curl over star 13. The reverse is uncracked. None finer in EDS in the Grellman census.

Ex Rod Burress-Cliff Kolbus, McCawley & Grellman Auctions 1/11/1992:278-J. R. Grellman Collection 7/1995-R. S. Brown, Jr., McCawley & Grellman Auctions/Superior 6/2/2002:237



LOT 380 1845 N-13 R2 VG7. Sharpness F15 but covered with small nicks are there are areas of shallow reddish scale on both sides. Slightly glossy medium brown and light chocolate. Rare TDS, die state h, with rim cuds from star 11.5 clockwise to star 3 and others from ERICA clockwise to under the wreath ribbon. The cud on the obverse is weak; the one on the reverse is clear.

Ex Bob LaForme



LOT 382 1846 N-2 R2 Repunched 1 VF30. Ten points sharper but cleaned and retoned glossy steel and light olive. No notable marks or other distractions. Rare latest die state, (f), with a strong rim cud over TES and a weaker one over the left side of the M in AMERICA. Tied for CC#8 of the die state in the Grellman census.

Ex Joe Dooley, McCawley & Grellman Auctions 1/11/1997:1029-Bob LaForme (includes the LaForme collection envelope and Dooley lot ticket)

EQUAL FINEST EDS 1846 N-6



LOT 383 1846 N-6 R1 Repunched 46 MS60. Frosty light olive and chocolate. The only defect is an area of extremely fine planchet roughness in the hair buns and surrounding field. Scarce EDS, die state a, with sharp repunching below the 46 and no die lines through the E in STATES. Tied for finest known of the early state in the Grellman census. Removed from an NGC slab graded MS63 Brown (older generation NGC label #143523-001 included)

Ex McCawley & Grellman Auctions 8/19/1995:347-R. S. Brown, Jr., McCawley & Grellman Auctions/Superior 6/2/2002:265 (includes both lot tickets)



LOT 384 1846 N-6 R1 Repunched 46 NGC graded MS61 Brown. Choice glossy brown and light chocolate. Essentially flawless with luster in protected areas, just lightly worn. MDS, die state b. The repunching on the 46 is dull but visible. Our grade is EF40. The attribution and Reiver provenance are noted on the NGC label. Certificate #308286-014

Ex Jules Reiver, Heritage Auctions 1/24/2006:28430 (lot ticket included)



Lot of 2

LOT 387 Pair of Tough 1846 Varieties. Includes N-10 R4 EDS F12 net VG8 for a short scratch, and N-21 R5 EDS VG10+ choice, close to F12 (removed from a PCGS slab graded VF20, PCGS label included and it shows the attribution). Both are glossy brown and chocolate. Lot of 2 coins.



LOT 385 1846 N-7 R2+ VF30. Glossy medium brown. Smooth and attractive, just lightly worn. LDS, die state d, with a clearly defined rim cud from the date to star 13. Tied for CC#11 of those known with the cud in the Grellman census. Noyes photo #30314.

Ex Joe Rose, Harmer Rooke Numismatists 3/15/1990:398-Jim Bishop 4/1990-J. R. Grellman Collection 6/26/2007-Robert Soltisiak (includes the Grellman collection envelope)



LOT 388 1846 N-23 R5 Tall Date with Repunched 1 F12. Slightly sharper but extremely faint granularity covers the fields well hidden under glossy dark olive brown toning. No verdigris or notable marks. All the attribution points are clear. EDS, die state a.

Ex 1996 EAC Sale, lot 315-Stuart A. MacDonald, Heritage Auctions 9/11/1997:5322 (last lot ticket included)



Lot of 2

LOT 386 Pair of 1846 Cents. Includes N-9 R2 MDS (b) EF45+ net VF35+ for a few spots of shallow verdigris and N-18 R1 MDS (c) AU50+ net EF40+ for recoloring. Lot of 2 coins.



LOT 389 1846 N-26 R5 Tall Date, Repunched 1 F15. Very attractive glossy medium brown with darker steel brown toning on the highpoints. The only marks are some tiny specks of verdigris around star 2 plus minor roughness on the rim left of that star. MDS, die state b early. The spike through the wreath below M and the repunching through the center of the 1 in the date are both clear.



EARLY CENTS AUCTIONS



LOT 390 1846 N-26 R5 Tall Date, Repunched 1 PCGS VF Details Scratch. Sharpness at least F12 but there is a diagonal scrape in the field right of star 4 and a few small rim nicks on both sides, none significant. Slightly glossy dark olive and steel, the devices several shades lighter than the fields. MDS, die state b. The spike through the wreath right of the E in ONE is clear and the horizontal line through the 1 is sharp. **Our grade is net VG10.** The attribution is noted on the PCGS label. Certificate #405600.95/37565963

Ex Paul Delfeld, McCawley & Grellman Auctions/ Superior 2/2005:1467-Phyllis Thompson, McCawley & Grellman Auctions/Goldbergs 1/31/2010:564-2011 EAC Sale, McCawley & Grellman Auctions, lot 522-John McBride (includes the last 2 lot tickets)



LOT 391 1847 N-4 R3 Repunched 18 AU55. Lustrous light olive and steel brown with 10% of the planchet showing faded mint red, mostly on the reverse. There is a minor rim bruise at star 4 and a small splash of darker reddish chocolate brown toning at F-AME. Otherwise this piece is choice. Sharply struck MDS, die state c, with die cracks on the reverse. The repunching on the 18 is sharp.

Ex Davisson's Auctions 8/21/1996:325 (lot ticket included)



LOT 392 1847 N-10 R3 EF45. Frosty light brown with a splash of slightly darker reddish brown toning between stars 2 & 3. No marks, just very light wear on the highpoints. MDS.

Ex 1991 EAC Sale 4/27/1991:325



LOT 393 1847 N-26 R3 F12. Sharpness VF25 but there is a small dig in the center of the ear and another shallow one over the N in CENT. Dark chocolate brown with lighter chocolate toning covering the highpoints. The surfaces are decent but not perfectly smooth. No obvious corrosion or verdigris. Rare LDS, die state e, with a very strong rim cud break at OF-A (Newcomb's old #17).

Ex Ed Tarr-McCawley & Grellman Auctions/Goldbergs 9/2008:562 (lot ticket included)



LOT 394 1847 N-37 R2 MS60. Frosty medium steel brown with an area of darker olive brown toning (not carbon) in the field before the face and another down through the N in CENT. Traces of mellowed mint red show on both sides. No notable signs of contact. E-MDS. A variety that is difficult to find in mint state; this one is tied for CC#4 honors in the Grellman census.

Ex Bowers & Ruddy 2/2/1997:1078



LOT 395 1848 N-9 R1 MS60. Lustrous bluish steel brown and light chocolate. No spots or stains, and the best identifying mark is a trivial tick on the rim over the left side of star 7. EDS, die state a, before any die cracks or rim cuds.

Ex Del Bland-Classical American Rarities 6/2/1995



Lot of 2

LOT 396 Pair of 1848 Cents with Rim Cuds. Includes N-9 R1 LDS (die state f) with a clearly defined rim cud break at D-STATE EF40 net F15 for corrosion, and N-13 R4+ LDS (die state b) with a weak but visible rim cud over TES VF35. Lot of 2 coins.

Both are ex Norman Wolfe Collection, McCawley & Grellman Auctions/Goldbergs 1/2016:812 (lot of 2). The N-9 came earlier from the Jules Reiver Collection (as NCS AU Details Corroded)



Lot of 2

LOT 397 Pair of Cents, 1848 & 1852. Includes 1848 N-22 R1 MDS (c) EF40 net VF25 for light scratches and 1852 N-14 R1 Repunched Date EDS (a) VF30. Both are glossy brown and light chocolate. Lot of 2 coins.

LUSTROUS 1848 N-26



LOT 398 1848 N-26 R5- EF40. A frosty mint state cent that has ample original mint red showing and great eye appeal, but a glass reveals numerous microscopic ticks sprinkled over both sides. Has the look of a piece that was pressed (not scuffed) against a granular surface, perhaps like a penny that was run over by a car in a parking lot. Unusual, I know. Frosty light steel brown with 15% of both sides showing mellowed mint color. The only marks visible to the unaided eye are a small puff of darker toning under star 2, a spot of crud at the bottom of the A in STATES, and a tiny scratch under the N in ONE. Rare LDS, die state c, with a sharp die line through the end of the wreath stem. Tied for CC#5 honors for the variety in the Grellman census. Inspection recommended.

Ex Jules Reiver, Heritage Auctions 1/24/2006:20344 (lot ticket included)



EARLY CENTS AUCTIONS



LOT 399 1848 N-30 R5 PCGS graded VF20. Glossy light to medium brown. Smooth with only trivial contact marks. A spot of fine carbon over star 1 is the only defect. EDS, die state a. **Our grade is VG10.** Certificate #1883.20/37565909



Ex McCawley & Grellman Auctions/Goldbergs 9/2012:747 (lot of 2)-John McBride



LOT 400 1848 N-32 R5 F15. Ten points sharper with traces of fine verdigris, particularly at stars 5 & 12-13. Minor marks consistent with the sharpness grade, none notable. Mostly reddish steel brown with slightly lighter steel brown toning on the devices. MDS, die state a. The die crack on the reverse is clear. Removed from a PCGS slab as XF Details Environmental Damage (PCGS label #406524.97/28324356 included, and it shows the attribution)

Ex Larry Briggs-1997 EAC Sale, lot 360-R. S. Brown, Jr., McCawley & Grellman Auctions/Superior 6/2/2002:619 (includes the Brown collection envelope and both lot tickets)



LOT 401 1848 N-35 R2 AU55. Choice frosty medium brown with a hint of light bluish steel overtone. Sharply struck with just a hint of rub on the highest points of the devices. The only notable mark is a small, well-hidden tick between the L and I in LIBERTY. LDS, die state c. The bar from the dentils over the U in UNITED is gone and there is a subtle lump in the field over star 3.

Ex 1996 EAC Sale 5/4/1996:328 (lot ticket included)



LOT 402 1848 N-39 R5+ PCGS XF Details Environmental Damage. Sharpness EF40 but covered with uniform fine granularity. No verdigris and the only notable mark is a tiny rim nick over the E in STATES. Olive brown and steel. **Our grade is net F15.** The attribution is noted on the PCGS label. Certificate #406541.797/37577513



Ex George Ramont 12/1969-Jules Reiver, Heritage Auctions 1/24/2006:20362-Evan L. Kopald 6/1990-Frisco Mint FPL 11/2017-John McBride



LOT 403 1849 N-7 R4 NGC graded MS63 Brown. Frosty medium brown and light chocolate with lots of golden tan showing through in protected areas on the reverse. There are a couple tiny ticks on the cheek and a hint of rub on the highest points of the devices, but the cent has mint state eye appeal. MDS, die state d, with fine die rust evident on much of the obverse. **Our grade is AU58, close to mint state.** Tied for CC#7 for the variety but finest of state d in the Grellman census. Certificate #2106653-006



Ex Heritage Auctions #132103, lot 25040 (lot ticket included)



LOT 404 1849 N-26 R3+ AU50+. Sharpness very close to mint state but there is a dull scrape on the second T in STATES and another on the rim over the second S in STATES. Neither mark breaks the toning and they are not too distracting. Frosty light chocolate brown. Scarce EDS, die state a, with sharp vertical die lines at the dentil tips left of star 3. Second finest of the early die state in the Grellman census.

Ex Doug Bird, McCawley & Grellman Auctions/Superior 2/2007:159



LOT 405 1849 N-28 R3 EF45. Frosty tan and light brown. The only mark is a spot of reddish brown toning (not carbon) at the bottom of the 8 in the date. EDS, die state a, with fine diagonal die polishing lines in the field above the head in addition to the stronger die lines on the reverse. The small rim cud below the date seen in the earlier N-29 die marriage are weak but visible.

Ex Chris McCawley 4/14/1988-Wesley A. Rasmussen, McCawley & Grellman Auctions/Superior 2/8/1998:285-McCawley & Grellman Auctions/Superior 9/19/1999:564



LOT 408 1850 N-17 R5 PCGS graded AU58+. Frosty light brown with a puff of darker steel toning high on the neck. There are a few light contact marks on the obverse including a dull tick just off the end of the bust. EDS, die state a, with die lines and clashmarks on the obverse but no cracks. **Our grade is AU50.** Certificate #1889.58+/131787575



LOT 409 1850 N-26 R4 EF40. At least 5 points sharper but the obverse was lightly cleaned and retoned. Glossy light chocolate brown with lighter brown on the portrait. A spot of dark toning on the rim at star 3 is the only notable mark, and there is some microscopic dirt on the obverse. LDS, die state b.



LOT 406 1850 N-15 R1 AU58. A mint state cent that has a barely visible (and easily missed) rim bruise at IT in UNITED and two faint hairline scratches over star 1. Otherwise quite nice. Lustrous medium steel brown with peeps of mint color in protected areas on both sides. MDS, die state a late, with flowlined fields but the earlier die lines are still visible.

Ex Valley Coin Exchange 3/1988



LOT 410 1851 N-2 R1 MS60. Lustrous light brown and steel with traces of mint red remaining on the obverse and at least 10% of the reverse showing mint color. There is a reddish stain on the chin, some small spots of reddish chocolate toning on the right side of the obverse, and small spots of verdigris at the E in UNITED and at ER in AMERICA. MDS, die state b. The early die lines are gone and the fields are starting to show fine flowlines.

Ex Evan L. Kopald-2008 EAC Sale, McCawley & Grellman Auctions 5/10/2008:594 (lot ticket included)



LOT 407 1850 N-15 R1 EF45. Sharpness near mint state but this cent was cleaned and the reverse was lightly burnished. Now toned an attractive medium brown and light chocolate with hints of underlying very faded mint color in protected areas. No spots or stains, and the only mark is a tiny nick on the rim over the M in AMERICA. EDS, die state a, with thin die lines over star 5. Looks mint state and has been sold as such.

Ex Coin Galleries 5/24/1972:1073-Stack's 3/12/1997:238 (as MS60) (both lot tickets included)



LOT 411 1851 N-2 R1 MS60. Lustrous light olive and bluish steel. Satiny and very attractive. The only marks are some tiny ticks on the rim at the top of the obverse and bottom of the reverse. M-LDS, die state b. The earlier die lines are gone and the fields are flowlined.

Ex Tom Reynolds 3/23/1996



EARLY CENTS AUCTIONS



LOT 412 1851/81 N-3 R1 Overdate 51 over Inverted 18 VF25. Sharpness AU50 but covered with fine granularity on the reverse with stronger granularity on the reverse. Light to medium olive brown; probably recolored. The only mark is a tiny rim bruise at the C in AMERICA. E-MDS, die state a. The 51/81 feature is clear.

Ex Chris McCawley 9/11/1993



LOT 413 1851 N-36 R5+ PCGS VF Details Damage. Sharpness VF25 but there is a rim dent at star 2 and another over the first T in STATES. Otherwise the surfaces are smooth and show only minor contact marks. Glossy medium chocolate brown with lighter brown highpoints. EDS. The attribution and Grellman-Ruttenberg-Ellsworth provenance are noted on the PCGS label. Certificate #406760.98/28157872

Ex Georgia Numismatic Association bourse 5/1989-J. R. Grellman 7/1989-Gary Ruttenberg, McCawley & Grellman Auctions 6/1995:627-Colonel Steven K. Ellsworth-Bob Padula



LOT 414 1852 N-6 R2- AU55. Choice glossy light chocolate brown. Essentially flawless with just a hint of rub on the highest points of the devices. LDS, die state c, with a bold rim cud on the right side of the obverse. A relatively common rim cud in the late date series, but this is a really nice one.

Ex 2017 EAC Sale, lot 341 (lot ticket included)



LOT 415 1852 N-7 R1 Repunched Date NGC graded MS62 Brown. Frosty medium brown and chocolate with steel brown toning on the highpoints. A choice cent with nice eye appeal, but there is light wear on the highpoints. MDS, die state b. The repunching is still visible on the 1 & 52 but not on the 8. Our grade is EF45. The attribution and Reiver provenance are noted on the NGC label. Certificate #308304-013

Ex Jules Reiver, Heritage Auctions 1/24/2006:28594 (lot ticket included)



LOT 416 1852 N-12 R1 Repunched 18 MS60. Lustrous medium steel brown and light chocolate with traces of mint red on both sides. The only marks, and they are barely visible under magnification, are two tiny pinpricks at the lower right point of star 3. MDS, die state b. The repunching on the 18 is gone and there is a die crack from the bust tip to star 1.



LOT 417 1852 N-20 R3+ AU50. Sharpness closer to mint state but dipped long ago and retoned an attractive olive brown and steel with mellowed red in protected areas. The surfaces are lustrous and this cent looks mint state to the unaided eye. The only marks are two tiny ticks on the jawbone near the ear lobe. M-LDS, die state a late. The fields are flowlined but there are no cud breaks on the reverse.

Ex McCawley & Grellman Auctions/Superior 6/2002:2504



LOT 418 1852 N-23 R5 PCGS graded XF45. Attractive glossy medium brown. The surfaces are smooth and the only notable mark is a light scratch in the field above star 1. M-LDS, die state b, with a strong cud break at the bottom of the reverse. **Our grade is VF30**, tied for CC#8 of those known with the single cud break in the Grellman census. The attribution is noted on the PCGS label. Certificate #147287.45/8142

Ex Mike Eisenberg, 2011 EAC Sale, McCawley & Grellman Auctions 5/14/2011:557-Mike Iatesta, McCawley & Grellman Auctions/Goldbergs 2/2017:720-John McBride



LOT 421 1853 N-12 R1 AU55. Frosty light brown with slightly darker brown on the highpoints. No marks or other defects, just a hint of rub on the highest points of the devices. LDS, die state c. The fine die line down from the O in OF is clear. Removed from an ANACS slab graded AU58 (ANACS label #4912041 included).

Ex Al Pratt (eBay) 1/16/2016

WELL PEDIGREED 1853 N-23



LOT 419 1852 N-23 R5 VF25. Glossy medium brown with slightly darker steel brown on the highpoints. No notable marks, just moderate wear. M-LDS, die state c, with a strong rim cud at the bottom of the reverse but none at AM.



LOT 420 1853 N-7 R2 PCGS graded MS65 Red & Brown. Frosty mint red fading to steel brown and light olive with 25% of the obverse and more than 50% of the reverse showing mint color. The surfaces are lustrous and this cent has very nice eye appeal. There is a small puff of darker reddish brown toning under the left foot of the N in CENT and an even smaller one under the right pendant of the T in UNITED. MDS, die state b. The fine die lines on the reverse are gone but the die line from the dentils below the 8 is clear. **Our grade is MS63+**, CC#6 in the Grellman census. Certificate #1902.65/25798377

Ex Heritage Auctions #1236, lot 3071 (lot ticket included)



LOT 422 1853 N-23 R4 PCGS graded XF45. Choice glossy medium brown blending to light chocolate in protected areas. A beautiful cent, essentially flawless showing only light wear on the devices. LDS, die state b, with flowlined fields. **Our grade is VF30+**, but this cent has solid EF40 eye appeal. Comes with a great provenance for such a modest cent. The attribution is noted on the PCGS label. Certificate #406033.45/37565829

Ex Howard R. Newcomb-Dr. William H. Sheldon-Sheldon Estate-Stack's 3/11/1998:213 (as N-17)-Jack Wadlington, Stack's Bowers 11/8/2017:5812 (includes the Wadlington collection notes and both lot tickets)



EARLY CENTS AUCTIONS



LOT 423 1853 N-26 R2 PCGS graded MS64 Red & Brown. Lustrous mint red fading to steel brown with at least a third of the coin showing mint color. No significant marks, only trivial specks of darker toning (not carbon) scattered over both sides. A small spot of darker toning nestled between the upper left points of star 1 can help identify this cent. E-MDS, die state a late. Traces of the die lines at ERI are still visible, clearest from the right top of that E. **Our grade is MS63+, close to MS64, and CC#4 for the variety in the Grellman census.** Certificate #1902.64/20843409



LOT 424 1853 N-26 R2 MS60+. Lustrous light olive and bluish steel with 10% of the obverse and 25% of the reverse showing some mint color. The only marks are a couple tiny specks of darker toning around star 1, a small planchet flake below that star (as struck), and a faint curving hairline on the cheek below the eye. None of these marks is visible to the unaided eye and this cent has great eye appeal for the grade. MDS, die state b. The fine die lines over ERI in AMERICA are gone. Removed from a PCGS slab graded MS62 Red & Brown (older generation PCGS label #1902.62/8397370 included).

Ex Mid-Valley Coin 1/1994



LOT 425 1854 N-10 R2 MS60+. Lustrous light to medium brown and steel with hints of bluish steel overtone on the reverse. Satiny and very attractive. The only mark is a tiny speck of carbon under star 4. Sharply struck LDS, die state e, with die cracks on both sides.

Ex Stack's 3/25/1966:49-R. S. Brown, Jr., Superior 9/30/1986:1383-2006 EAC Sale, McCawley & Grellman Auctions 5/6/2006:484 (includes both lot tickets)



LOT 426 1854 N-11 R2 MS60. Lustrous medium brown with subtle overtones of light bluish steel, particularly on the reverse. A sharp cent that has great eye appeal. The only marks are a thin diagonal nick on the cheek left of the ear and three more closely spaced nicks at the same angle on the neck. None of these marks catches your eye. E-MDS, die state b early. The portrait is sharply struck and there are light die flowlines in the fields, a die state that is clearly earlier than usually seen for this variety.

Ex Michael Aron Rare Coins 9/1994



LOT 427 1854 N-28 R5- PCGS XF Detail Cleaned. Sharpness VF25 or slightly better but lightly cleaned and nicely retoned medium brown and light chocolate, the toning a bit lighter on the obverse, darker on the reverse. The only mark is a shallow chip at the dentil tips below star 11, as struck. MDS, die state b. The earlier die polishing lines on the reverse are gone. **Our grade is net VF20.** The attribution is noted on the PCGS label. Certificate #406136.92/37565832

Ex eBay 1/22/2005-Eric Fix, McCawley & Grellman Auctions/Goldbergs 8/2014:587-John McBride

THE NAFTZGER 1855 N-4 LATE STATE



- LOT 428** 1855 N-4 R1 Upright 55 PCGS graded MS64 Red & Brown. Frosty bluish steel and light olive brown with faded mint red covering 30% of the obverse, 50% of the reverse. Only minor defects on otherwise choice surfaces. The notable marks are a few nicks on the throat and front edge of the neck, a pair of thin nicks just right of star 4, and a spot of fine carbon at the bottom of the second S in STATES. Both sides are coated with a thin layer of lacquer or some similar protective substance (which could be removed without damaging the coin and probably raise the grade by a point or two). Rare LDS, die state f, with a series of 4 rim cud breaks over STATES, and those cud breaks are strong on this example. Not graded by Noyes, his photo #31231. **Our grade is MS62**, tied for CC#4 of those known with the 4 rim cud breaks in the Grellman census. The attribution and Naftzger provenance are noted on the PCGS label. Certificate #46953.64/18900613

Ex Sheraton Coin Co. 5/1947-Admiral Worthington S. Bitler-R. E. Naftzger, Jr.-Naftzger Estate, McCawley & Grellman Auctions/Goldbergs 9/7/2009:1243 (includes the Bitler/Naftzger collection envelope and Goldberg lot ticket)



- LOT 429** 1855 N-7 R1 Upright 55 MS60. Lustrous light olive and steel brown with 5% of the obverse and more than a third of the reverse showing mint red. Looks choice and there are no post-striking defects, but the planchet has a few minor flaws. There is a small chip on the rim at star 1, a few tiny flakes on the neck, several thin voids over NITE, and one more at the top of the second T in STATES. E-MDS, die state b. There is a fine die crack through the top of UNI but the small lump over the junction of the E & N in CENT is still visible. Removed from a PCGS slab graded MS64 Red & Brown (old two-part PCGS label #1908.64/9151815 included).

Ex Mid-Valley Coin 3/4/1995

- LOT 430** 1855 N-9 R1 Knob-on-Ear AU50. A sharp mint state cent that has a collection of extremely faint hairline scratches in the field before the neck and chin, apparently added to remove a nick below the chin. Otherwise this cent is flawless, just dirty. Frosty medium brown and steel. M-LDS, die state e late, with a strong knob break below the T in LIBERTY and a fully outlined additional section of knob below that Y. Looks choice to the unaided eye.



EARLY CENTS AUCTIONS



LOT 431 1856 N-2 R1 Italic 5 NGC graded MS61 Brown. Choice glossy medium brown and light chocolate with flowline frost in protected areas. Just a few tiny ticks including a small rim nick at star 10. M-LDS, die state e, with a sharp die line up from star 4. **Our grade is EF45.** The attribution and Reiver provenance are noted on the NGC label. Certificate #308310-017



Ex Jules Reiver, Heritage Auctions 1/24/2006:28667 (lot ticket included)



LOT 432 1856 N-14 R1 Italic 5 AU50. Sharpness close to mint state but there are two small digs: one at the dentil tips below star 2 and another at the dentils over ST in STATES. Otherwise quite nice with just a hint of friction on the highpoints. Frosty medium brown. MDS, die state b (the usual hoard die state for this variety).



LOT 433 1857 N-2 R1+ Small Date EF45. Choice glossy light brown blending to darker olive brown in protected areas on the obverse. Smooth and attractive, just lightly worn on the devices. MDS.

Ex Stack's 4/29/1983:1094



Lot of 8

LOT 434 Group of 8 Counterstamped Large Cents. Grades of the host cents range from Fair to XF. All the stamps are different and clearly readable. Three are from merchants in Philadelphia and one from New York. Careful inspection recommended. Lot of 8 coins.

MISC



Lot of 50

LOT 435 Group of 50 Hard Times Tokens 1833-1841, grading AG to VF. Some have defects, others are nice. Good mix of types. None attributed. Inspection recommended. Lot of 50 pieces.



Lot of 7

LOT 436 Group of 7 Copies and Medals. Includes a 1788 Massachusetts half cent copy and six medals that are EAC related. All are BU. Inspection recommended. Lot of 7 pieces.



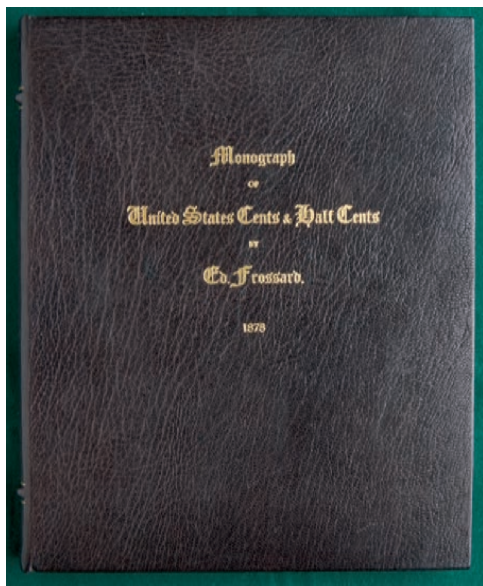
EARLY CENTS AUCTIONS



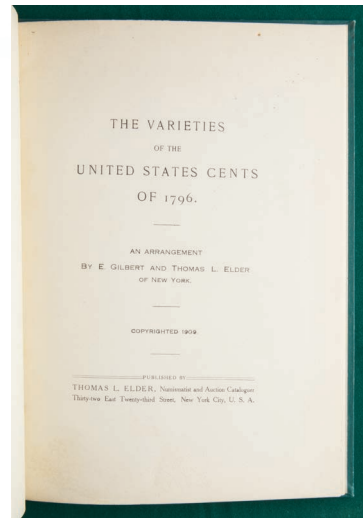
Lot of 7

LOT 437 Group of 7 Coin Dealer Tokens and Revolutionary War Medals. Includes 2 tokens from Edward Cogan (one M-PA-90 NGC graded MS64RB), 2 from Augustus Sage, 2 honoring the Revolutionary War, and an electrotype copy of the 1792 Silver Center Cent without the silver insert. Grades are EF to BU. Some neat items. Inspection recommended. Lot of 7 pieces. Certificate #4469197-021

LITERATURE

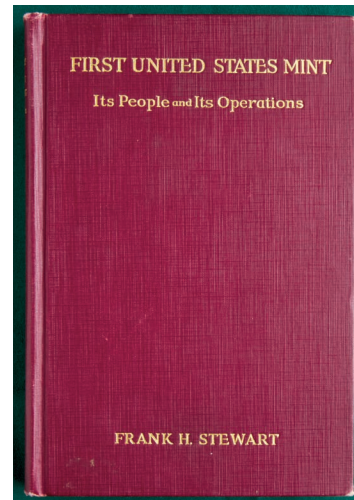


LOT 438 Frossard Monograph of United States Cents & Half Cents, 1878. Bound in contemporary full leather. Fine condition. Copy 110/300. A plastic folder inside rear cover contains Frossard's sale of the George Merritt collection of Cents & Half Cents, January 1879. The coins from this sale were used for the first 8 plates in the book.



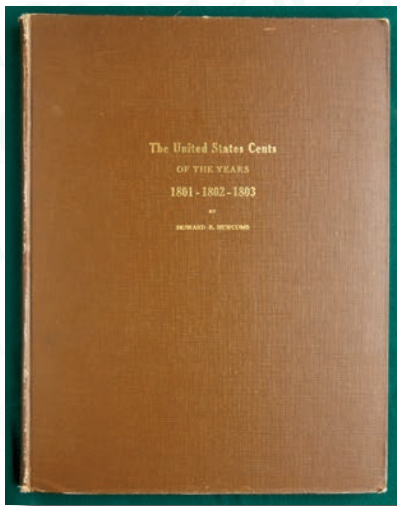
LOT 439 Gilbert-Elder United States Cents of 1796. Fine. 1909 edition.

Ex Norweb Sales, Bowers & Merena 11/1988



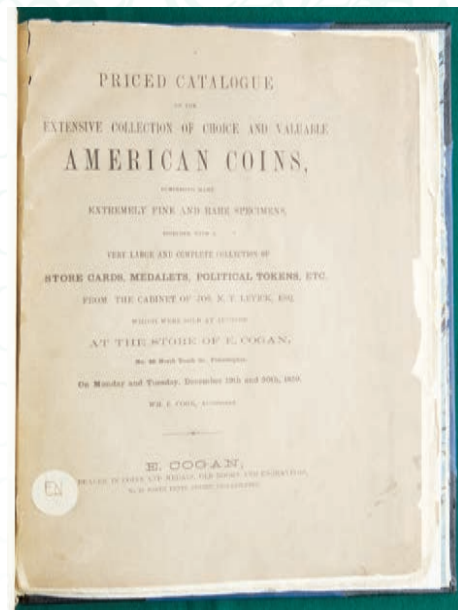
LOT 440 First United States Mint, 1924, by Frank H. Stewart. Fine condition

Ex Charles Davis sale, 3/1999

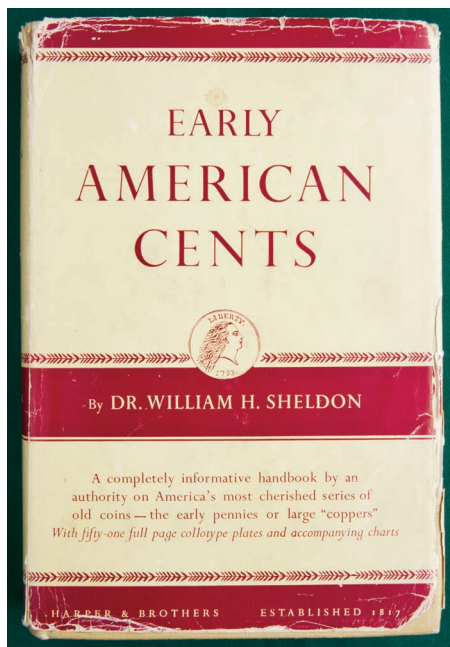


LOT 441 Newcomb's *The United States Cents of the Years 1801-1802-1803*, 1925 Edition. Fine. Laid in are two supplementary plates on photographic paper depicting new reverses discovered after publication of the book (for 1801 N-14 and 1803 N-24).

Ex Kolbe Sale, 12/1986

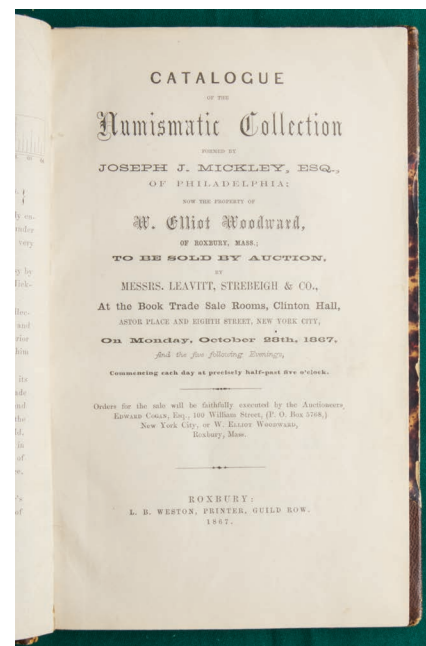


LOT 443 Edward Cogan's *Auction Catalog for the Joseph N. T. Levick Collection*, 12/1859. Fine condition. Bound in blue half leather. Special Edition. First auction catalog to be issued after a sale with prices realized printed next to each lot.



LOT 442 Sheldon's *Early American Cents*, 1949 Edition. Book is Fine but dust jacket is Poor. This was Charles Ruby's copy. Autographed by Sheldon, Paschal, and Breen during a 14 August 1952 "EAC meeting" at Ruby's home in Fullerton, California. Each wrote a short note to Dr. Ruby about the visit and signed their names. Another page has short, signed notes from Art Kagin and Del Bland (probably added after the meeting). Also laid in is a two-page typewritten resume for Dr. Ruby as a candidate for the office of vice-president for the California Teacher's Association.

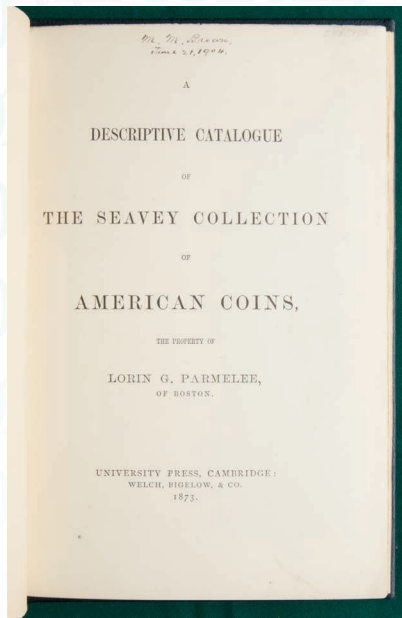
Ex Kolbe Sale, 10/1998



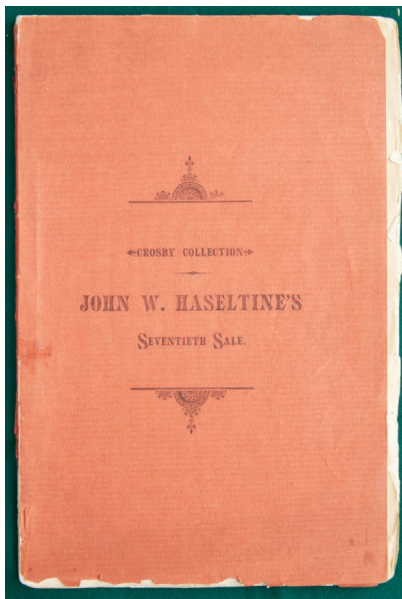
LOT 444 W. Elliot Woodward's catalog for the Joseph Mickley Collection, 10/1867. Fine condition. Bound in brown half leather. From the Harry Bass library with his bookplate inside the front cover. Priced in black ink. This was called "Perhaps the greatest U. S. Collection" by John Adams.



EARLY CENTS AUCTIONS

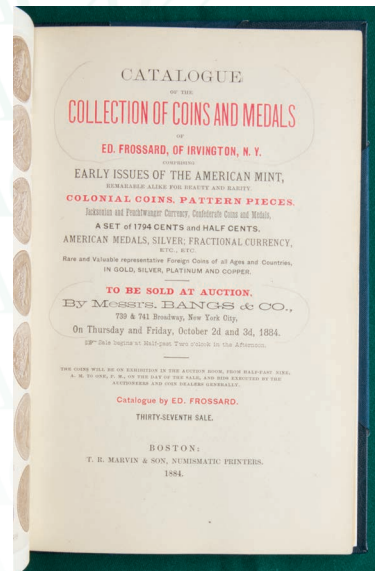


LOT 445 Descriptive Catalog of the Seavey Collection--the Property of Lorin G. Parmelee, 1873. Fine condition. Five plates. This collection was to be auctioned by W. H. Strobidge, but it was purchased en bloc by Parmelee prior to the auction. Supposedly 150 copies were printed, but it is extremely rare today.

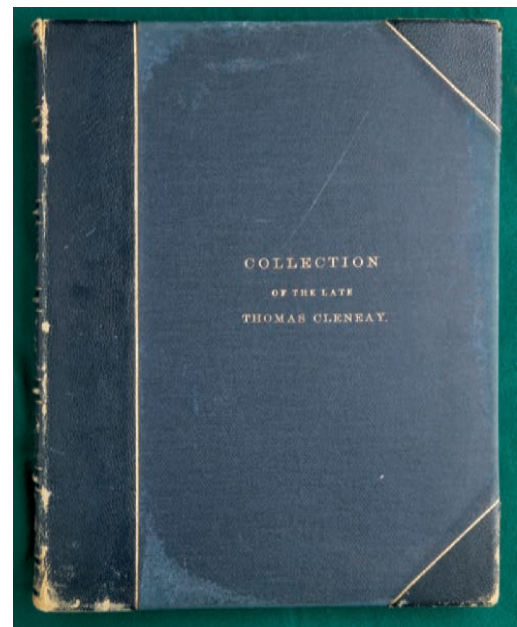


LOT 446 John Haseltine's Auction Catalog for the Crosby Collection, 6/1883. Fine condition. Orange covers are a bit chipped. Priced in pencil. This was Sylvester Crosby's personal copy. Crosby was known more for his Colonials and Washingtonia, but he also had an outstanding collection of 1793 cents including the discovery coins for S-12 and S-15. Surprisingly these cents were described using Frossard numbers rather than the Crosby numbers that were first used in the 1869 AJN article that was published with J. N. T. Levick's famous plate of 1793 cents.

Ex Bob Webster (from his collection of Crosby memorabilia)-Bowers & Merena 11/1990



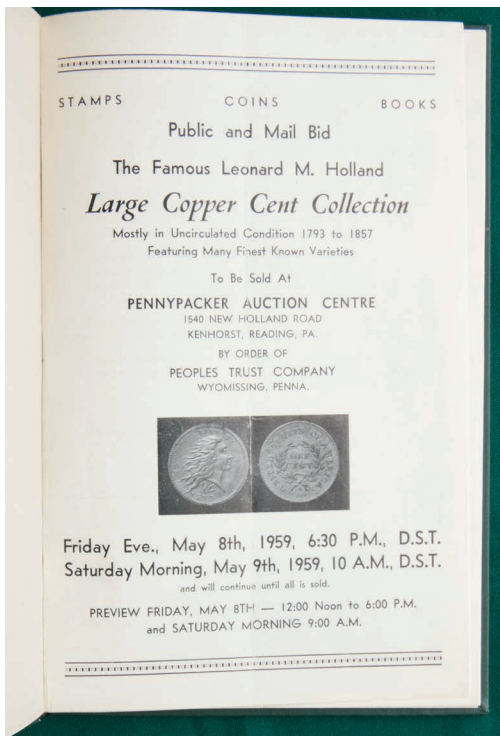
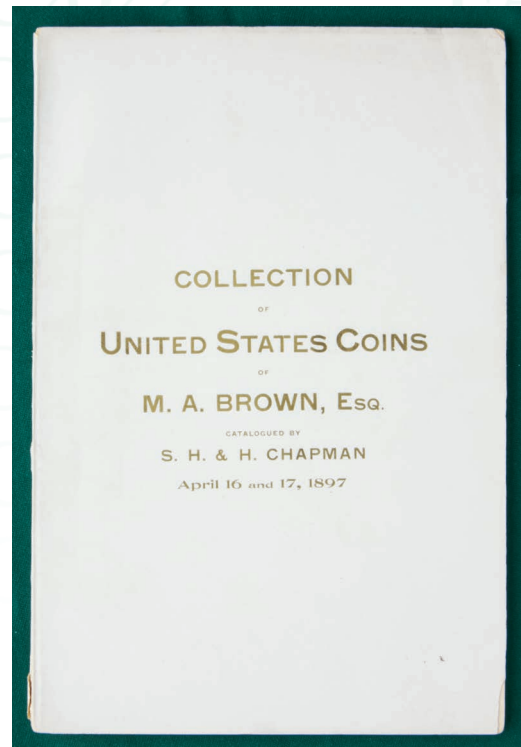
LOT 447 Catalog of the Collection of Coins and Medals of Ed. Frossard, 10/1884. This was Frossard's 37th sale. Bound in blue half leather. Nine plates. Priced in black ink. Considered to be "Frossard's finest sale" by Charles Davis. Lots 850 to 900 were 1794 cents. Frossard wrote in the catalog "This set of 1794 cents, the finest and most complete ever offered, will first be offered entire, thus giving some one the opportunity of adding every piece therein contained to his collection; but the owner reserves the right to sell each piece singly if the highest bid made for the set is not satisfactory." The entire set sold for \$420.



LOT 448 S. H. and H. Chapman's sale of the Late Thomas Cleneay Collection, 12/1890. Internally Fine but the cover is VG. Large format bound in black half leather. Includes 12 tinted photographic plates.

Ex Kolbe Sale, 12/1997

LOT 449 The S. H. & H. Chapman Auction of the M. A. Brown Collection, 4/1897. Very Fine condition. Includes four plates of large cents; each plate shows 21 obverses and reverses. These plates have been reduced (7' x 5") and are copies of copies (on photographic paper) made by Del Bland for Jan Valentine. The U. S. Treasury Department had confiscated the original plates before the catalogs were made. The original catalog was going to be large format, but when the plates were confiscated the Chapmans switched to a small format catalog.



LOT 450 The Famous (Infamous?) Pennypacker Auction Centre Sale of the Leonard M. Holland Large Copper Cent Collection, 5/1959. Fine condition. Bound in green cloth. Catalog folded vertically. This was John Adams' copy with prices realized for most of the early dates entered in ink (copied from Dorothy Paschal's catalog following the sale). Adams also added a list of six attendees: Paschal, Norman Stack (in error because it was Harvey Stack), Ray Gallo, C. Douglas Smith, Louis Helfenstein, and Gene Reale. Harvey Stack drove the other five from NYC to the auction being held in Reading, PA, in his station wagon. This consortium agreed to have one person bid on the cents. Later that night there was a second auction among those six back at their hotel. Most of the prices realized at this "second sale" were more than double the price realized at the first sale. Adams recorded the prices paid by Helfenstein for the eight cents he acquired at the second sale.

Ex John Adams-Dennis Mendelson-Armand Champa

Thank you for your participation
Please contact us for consignment information

MAY 14th, 2022

THE 2022 EAC CONVENTION SALE

TERMS OF SALE

- This is a private sale. Participation is by invitation only and is limited to members of The Early American Coppers Club or invited guests. The auctioneer reserves the right to refuse to honor any bid which, at his sole discretion, he feels is not in good faith. The auctioneer may withdraw any lot, without prior notice, for any reason whatsoever.
- The highest bidder acknowledged by the auctioneer shall be the buyer. In case of dispute the auctioneer may at his sole discretion reopen a lot. In all cases the auctioneer's decision shall be final and binding on bidders.
- All sales are payable in U.S. funds immediately upon receipt of invoice unless other arrangements have been made prior to the sale. Lots delivered in state of sale are subject to all applicable state and local taxes unless appropriate permits are on file with us.
- Postage will be added to the invoice of all successful bidders wishing for their lots to be shipped.
- A 15% Buyers Fee will be added to all invoices. Additional 4% charge for Paypal payments (19%).
- Please keep in mind this is not an approval sale. All sales are considered final. Sales to the floor may not be returned for any reason save authenticity. Sales to mail bidders are final unless lot proves to have been misdescribed.
- Lots will be available for viewing by appointment.
- Mail or phone bids will be accepted up through the day of the sale. All bids will be reduced. Lots will open at one bid increment above the second highest bidder mail bidder. Bidding will proceed as competition dictates with the lot either selling to the floor or to the mail bidder at one increment above the second highest bid.
- The consignor may bid or place a reserve bid on their own lots. Any lots repurchased by a consignor will be announced as a pass. Principals of the auction firm may consign or may bid on coins in the sale.

Questions?

CONTACT

Chris McCawley Lucas Baldrige
405-226-5072 972-310-9497
cmccawley@aol.com friscomint@live.com



EARLY CENTS AUCTIONS

www.earlycentsauctions.com | info@earlycentsauctions.com

P.O. BOX 6400, Austin, TX 78762

Lucas Baldrige Texas Auctioneer Lic#18106



EARLY CENTS AUCTIONS

www.earlycentsauctions.com | info@earlycentsauctions.com
P.O. BOX 6400, Austin, TX 78762
Lucas Baldrige, Texas Auctioneer Lic#18106



EARLY CENTS AUCTIONS

EAC 2022

Prices Realized

Total Hammer Price \$346,235 Hammer + Buyers Premium \$ 398,170

Lot	Price	Lot	Price	Lot	Price	Lot	Price	Lot	Price
1	360	38	240	78	650	116	360	154	480
2	340	39	175	79	250	117	170	155	160
3	360	40	1300	80	4600	118	6000	156	650
4	150	41	650	81	260	119	200	157	2000
5	180	42	220	82	320	120	190	158	2800
6	300	44	850	83	340	121	320	159	2200
7	240	45	340	84	650	122	700	160	850
8	135	46	120	85	300	123	500	161	480
9	50	47	460	86	140	124	150	162	1300
10	850	48	115	87	180	125	340	163	380
11	210	49	1000	88	600	126	170	164	180
12	320	50	500	89	400	127	130	165	850
13	360	51	150	90	1300	128	120	166	1600
14	550	52	360	91	170	129	420	167	2200
15	75	53	1000	92	400	130	280	168	5000
16	500	54	190	93	280	131	120	169	550
17	500	55	1900	94	200	132	85	170	12000
18	190	56	440	95	220	133	100	171	600
19	220	57	280	96	170	134	360	172	1000
20	360	58	320	97	120	135	180	173	3000
21	80	59	460	98	130	136	240	174	1700
22	3600	60	675	99	260	137	110	175	440
23	1900	61	380	100	280	138	2600	176	750
24	1250	62	190	101	300	139	22000	177	500
25	2200	63	650	103	240	140	320	178	1200
26	1700	64	600	104	2200	141	1500	179	350
27	650	65	420	105	130	143	2200	180	900
28	550	66	340	106	600	144	1000	181	4000
29	2000	68	1800	107	260	145	550	182	320
30	1500	69	2600	108	340	146	330	183	340
31	800	70	1300	109	110	147	250	184	28000
32	1300	71	300	110	380	148	4200	185	850
33	1100	72	600	111	120	149	240	186	150
34	180	73	220	112	120	150	1300	187	420
35	1100	74	2600	113	160	151	550	188	300
36	1000	75	900	114	230	152	400	189	700
37	750	76	800	115	400	153	950	190	5000

IF YOU WOULD LIKE TO CONSIGN TO OUR NEXT AUCTION PLEASE CONTACT: www.earlycentsauctions.com | info@earlycentsauctions.com P.O. BOX 6400, Austin, TX 78762 Lucas Baldrige, Texas Auctioneer Lic#18106

Lot	Price	Lot	Price	Lot	Price	Lot	Price	Lot	Price
191	650	262	160	323	320	381	170	440	50
192	340	263	850	324	460	382	110	441	160
193	380	264	950	325	550	383	550	442	500
194	900	265	4600	326	1300	384	170	443	210
195	320	266	260	327	170	385	130	444	340
196	650	267	950	328	480	386	150	445	1100
197	340	268	900	329	420	387	85	446	850
198	320	269	1000	330	70	388	95	447	550
199	4000	270	300	331	900	389	150	448	340
200	380	271	440	332	1300	390	70	449	200
201	280	272	750	333	280	391	320	450	320
202	300	273	420	334	190	392	380	451	700
203	170	274	750	335	1000	393	55		
204	280	275	3200	336	550	394	1000		
205	750	276	1000	337	360	395	800		
207	300	277	280	338	480	396	75		
208	320	278	320	339	180	397	80		
209	4000	279	180	340	340	399	60		
210	1400	280	650	341	750	400	110		
211	3000	281	190	342	440	401	440		
213	650	282	550	343	380	402	100		
214	320	283	800	344	280	403	1000		
215	5500	284	260	345	420	404	420		
216	1000	285	700	346	400	405	300		
217	340	286	420	347	850	406	420		
218	440	287	700	348	400	407	130		
219	340	288	340	349	420	408	300		
220	420	289	200	350	1100	409	100		
221	130	290	360	351	300	410	300		
222	4000	292	320	352	300	411	280		
224	550	293	340	353	360	412	180		
225	480	295	220	354	150	413	110		
226	240	296	220	355	460	414	300		
227	4000	297	380	356	850	415	160		
229	400	298	90	357	800	416	420		
230	280	299	650	358	850	417	170		
231	440	300	1100	359	120	418	260		
232	460	301	280	360	130	419	130		
233	500	302	1100	361	240	420	1000		
236	550	303	100	362	110	421	260		
238	850	304	700	363	160	422	420		
239	260	305	750	364	150	423	850		
240	440	306	800	365	460	424	380		
242	440	307	700	366	130	425	420		
243	2200	308	320	367	150	426	320		
244	100	309	550	368	185	427	70		
245	4400	310	3400	369	650	428	1000		
246	420	311	170	370	240	429	440		
247	240	312	95	371	480	430	220		
250	3200	313	600	372	130	431	220		
251	130	314	200	373	320	432	95		
253	180	315	260	374	190	433	400		
254	340	317	70	375	240	434	220		
255	850	318	340	376	400	435	800		
256	180	319	190	377	650	436	70		
258	400	320	420	378	100	437	550		
259	240	321	500	379	190	438	160		
260	190	322	950	380	60	439	120		